

Township N. IV North, Range N. XII East of Mer. (Mich. Ter.)

Very Obed
Total quantity 23,421.82

A true Copy from the Original on file in this Office

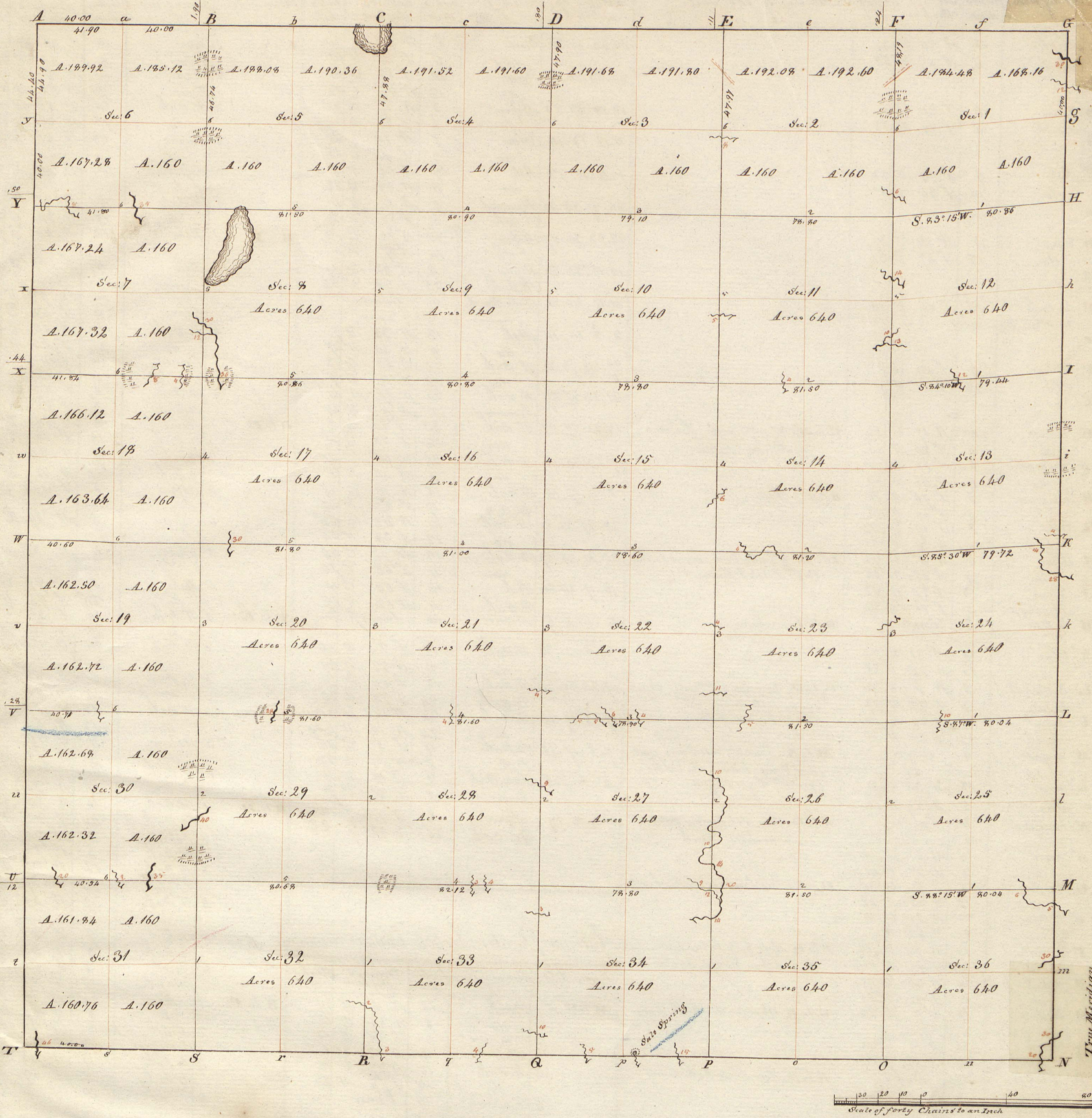
Surveyor General's Office
July 20th 1879

Saward Wiffin
Surveyor General

Comd. Letter to Bond. Capt
file 729/14 1846 - Des. Indulgence No 34

Var. 40 39 6

Scale of forty chd to an inch



Township N^o IV North, Range N^o XII East of the Meridian. (Mich. Ter.) Surveyed by Jos. Wampler 1818

Description of the Soil on the interior Sectional lines.

Between Sections	Quality &c.	Between Sections	Quality &c.	Between Sections	Quality &c.
35 & 36	Fine Rich level land	23 & 24	Fine level land, very well timbered Spruce, Beech, Sugar	4 & 5	Poor burnt timber land
25 & 26	Good beech land	27 & 28	Same	31 & 32	Poor hilly Oak land
25 & 26	First half swampy, rest wet Ash, Elm, Sugar &c.	27 & 28	Same	29 & 30	Poor hilly Oak land
24 & 25	Good level land - Ash, Elm, Spruce, Beech	22 & 23	Middling	29 & 30	Part poor Oak land, rest swampy Spruce land
23 & 24	Low level land - Ash, Elm, Beech, Sugar	21 & 22	Middling Oak land	16 & 20	Poor Oak land scarcely any timber
13 & 24	Good land but low level - Oak, Ash, Elm	15 & 22	Same	17 & 20	Poor Oak land
13 & 14	Level rich land - Oak, Ash, Spruce, Elm, Sugar, Spruce, Ash	15 & 16	Hilly Stony poor Oak land	17 & 18	Same
12 & 13	Low wet land	10 & 15	Good Oak land	18 & 17	Same
11 & 12	Very fine rich level land - Oak, Ash, Sugar, beech, Spruce, Elm, Spruce, Ash	9 & 10	Fine level land with timbered Oak, Spruce, Ash &c.	7 & 8	First half swampy, rest poor burnt timber land
1 & 12	Settled Beech land	9 & 10	Good Oak land	8 & 8	Scrubby Oak land
1 & 2	First half fine land - rest swampy	3 & 11	Poor hilly burnt timber land	5 & 6	Poor Oak land
34 & 35	Fine level rich land - Oak, Beech, Ash, Elm, Sugar	32 & 33	Poor hilly Oak land	6 & 7	Same
26 & 27	Good bottom land	28 & 33	Good hilly Oak land	7 & 18	First half swampy, rest dry no timber
26 & 27	Fine level rich bottom - Oak, Elm, Spruce, Oak, Beech, Spruce, Ash	28 & 29	Poor hilly Oak land	18 & 19	Poor hilly Oak land
23 & 26	Very swampy land	21 & 28	First half same - rest swampy	19 & 20	Thin Oak land
22 & 23	Level rich bottom land	20 & 21	Poor hilly Oak land	20 & 21	Level brushy bottom
14 & 23	Good level land - Oak, Ash, Spruce	16 & 21	Same		
14 & 15	Good 10. Oak land	16 & 17	Thin level 10. Oak land		
11 & 14	Good level land - Oak, Elm, Ash - Spruce, Maple	9 & 16	Burnt timber land		
10 & 11	Rolling Oak land	8 & 9	Same		
2 & 11	Very brushy timber land, rest good bottom - Oak, Spruce, Elm	4 & 9	Good Oak land		
	Poor hilly Oak land				

Survey No. 4 North, Range No. 12 East of Mer. (Mich. Ter.) Interior Section corners described Interior Quarter Section corners continued

Post	Plant	Inches diam.	Courses they bear	Links dist.
A	R. Oak	25	N 78 E 14	
a	Elm	9	N 58 W 58	
B	N. Oak	10	S 69 E 44	
b	do	18	S 8 N 110	
C	Spruce			
c				
D	N. Oak	18	N 27 N 171	
d	do	4	S 66 E 4	
E	N. Oak	26	N 75 N 153	
e	do	22	S 8 E 124	
F	Beech	8	N 61 N 12	
f	do	16	S 26 E 6	
G	Spruce	4	Corner	
g	Beech	16	N 48 N 20	
h	Poplar	14	S 65 N 27	
H	Sugar	12	East 5	
I	Maple	14	N 49 N 14	
i	Beech	4	N 27 N 7	
J	Elm	5	N 47 E 21	
K	do	14	N 20 E 20	
k	N. Oak	16	N 30 N 30	
l	do	3	N 10 E 15	
L	Elm	8	S 74 N 20	
l	Sugar	24	do	
m	Beech	6	N 85 E 12	
M	N. Oak	6	Corner	
M	N. Oak	24	N 56 N 12	
n	do	7	N 89 N 17	
N	Sugar	14	N 54 N 10	
O	Beech	7	S 22 N 12	
o	N. Oak	4	N 22 E 12	
P	Spruce	3	N 88 N 8	
p	Elm	20	S 52 E 8	
q	Spruce	16	N 44 N 5	
Q	do	4	N 10 N 8	
q	do	3	N 75 E 8	
R	Beech	4	N 66 N 14	
r	do	11	N 14 N 26	
S	Beech	8	S 61 N 10	
s	Poplar	10	N 79 E 19	
S	Poplar	6	N 44 N 17	
T	dogwood	4	S 12 E 40	
t	Sugar	10	S 66 N 15	
T	Oak	24	N 18 N 17	
U	do	10	N 70 E 50	
u	do	11	N 42 N 61	
V	Spruce	30	S 46 N 20	
v	do	20	N 31 E 29	
W	N. Oak	24	N 31 N 5	
w	Poplar	24	S 1 E 13	
X	N. Oak	22	N 80 N 77	
x	B. Oak	34	S 10 E 91	
X	B. Oak	15	N 58 N 11	
Y	do	24	S 57 E 82	
y	B. Oak	12	N 35 E 73	
Y	N. Oak	12	S 54 N 97	
z	do	26	N 51 E 32	
Z	do	-	S 65 N 53	
Z	N. Oak	13	S 57 N 21	
z	do	19	N 80 E 22	
aa	B. Oak	30	N 84 E 38	
aa	do	40	S 61 N 48	
bb	N. Oak	10	S 59 E 11	
bb	do	8	S 35 N 28	
cc	B. Oak	14	N 27 N 186	
cc	do		No other trees near	
dd	N. Oak	18	N 71 E 182	
dd	do			
ee	N. Oak	26	N 77 N 182	
ee	do			
ff	do			

Corners of sections	Plant	Inches diam.	Courses they bear	Links dist.
25.26.28.36	Beech	8	N 78 E 14	
do	do	12	N 77 N 17	
23.24.25.26	Spruce	24	N 73 E 21	
do	do	8	S 13 N 15	
do	Elm	26	N 53 N 9	
do	Hickory	10	S 52 E 8	
11.12.13.14	Spruce	8	N 78 N 23	
do	do	10	S 4 N 16	
1.2.11.12	Spruce	10	N 58 E 16	
do	Sugar	8	S 22 N 12	
26.27.34.35	do	18	S 80 N 13	
do	do	10	N 37 E 36	
22.23.26.27	Ash	10	S 56 E 7	
do	Jamarae	11	S 36 N 15	
14.15.22.23	N. Oak	28	N 37 E 11	
do	do	21	N 80 N 24	
10.11.14.15	N. Walnut	8	S 65 E 33	
do	R. Oak	22	N 42 N 53	
2.3.10.11	B. Oak	40	S 3 N 115	
do	do	4	N 65 N 40	
27.28.33.34	Ash	11	S 54 E 17	
do	Spruce	7	S 70 N 48	
21.22.27.28	Maple	14	S 4 N 27	
do	N. Oak	16	N 46 E 3	
15.16.21.22	N. Oak	20	S 89 E 74	
do	do	18	N 83 N 78	
9.10.13.16	N. Oak	12	N 78 E 32	
do	R. Oak	23	S 26 N 81	
3.4.9.10	Elm	24	S 27 E 9	
do	Spruce	8	N 41 E 7	
28.29.32.33	B. Oak	10	S 72 N 63	
do	do	20	S 50 E 34	
20.21.28.29	N. Oak	14	S 24 N 22	
do	do	14	N 45 N 15	
16.17.20.21	B. Oak	18	S 81 N 52	
do	do	16	N 52 E 17	
8.9.16.17	N. Oak	16	N 88 E 65	
do	B. Oak	15	N 77 N 190	
4.5.8.9	N. Oak	18	S 38 N 9	
do	do	14	N 75 E 38	
29.30.31.32	B. Oak	20	East 8	
do	N. Oak	26	West 67	
19.20.29.30	N. Oak	18	S 67 N 20	
do	do	26	S 14 E 41	
17.18.19.20	N. Oak	8	S 88 N 59	
do	B. Oak	10	S 84 E 47	
7.8.17.18	N. Oak	20	S 67 E 73	
do	Cherry	5	S 83 N 16	
5.6.7.8	N. Oak	12	N 69 E 124	
do	do	23	S 60 N -	

From & to	Plant	Inches diam.	Courses they bear	Links dist.	
I to X at 1	Ash	17	S 47 E 9		
do	B. Oak	12	S 74 N 23		
2	B. Oak	16	N 58 E 28		
do	do	24	N 36 N 25		
3	B. Oak	30	N 75 E 41		
do	N. Oak	10	S 70 N 49		
4	N. Oak	42	N 78 E 113		
do	do	18	S 7 N 81		
5	N. Oak	13	S 34 E 65		
do	do	12	N 83 N 146		
6	N. Oak	14	S 46 N 20		
do	do	16	S 64 N 35		
1	Hickory	10	S 32 N 14		
2	Beech	8	S 22 E 36		
3	Elm	18	N 69 N 15		
do	N. Oak	25	N 58 E 46		
3	B. Oak	34	S 68 E 67		
4	N. Oak	18	N 52 N 53		
4	B. Oak	14	Corner		
5	N. Oak	16	N 12 N 15		
do	do	11	S 36 E 10		
6	Elm	30	N 27 N 115		
O to P	1	Beech	11	S 52 N 14	
do	do	14	S 80 E 23		
2	B. Oak	13	N 65 E 21		
do	Ash	5	N 30 N 52		
3	Spruce	9	S 67 E 6		
do	do	8	N 20 E 17		
4	B. Oak	12	N 84 E 39		
do	do	9	S 42 E 8		
5	Spruce	12	N 64 E 21		
do	do	10	S 82 E 21		
6	Cherry	4	S 10 N 23		
do	Beech	23	N 15 N 22		
P to Q	1	Maple	11	N 68 E 13	
do	do	9	N 7 N 11		
2	Sugar	11	N 34 N 16		
do	Beech	10	S 8 E 7		
3	Elm	12	N 23 E 13		
do	Spruce	16	S 37 N 17		
4	N. Oak	18	S 42 N 17		
do	do	16	N 76 E 24		
5	N. Oak	6	S 41 N 60		
Q to D	1	Beech	17	N 52 N 37	
do	N. Oak	7	N 52 N 37		
2	do	14	N 82 N 29		
do	Spruce	10	S 46 E 17		
3	N. Oak	20	N 16 N 36		
do	N. Oak	28	S 53 E 20		
do	do	26	N 66 N 50		
4	N. Oak	14	N 49 N 20		
do	B. Oak	18	S 26 E 16		
5	N. Oak	8	S 60 N 49		
do	N. Oak	38	N 68 E 8		
6	N. Oak	12	N 74 N 50		
do	do	18	S 63 E 34		
R to C	1	N. Oak	20	N 51 N 74	
do	do	36	S 63 E 198		
2	B. Oak	26	S 14 E 17		
do	N. Oak	8	N 16 E 39		
3	N. Oak	22	S 84 E 26		
do	B. Oak	28	S 31 N 26		
4	B. Oak	10	N 6 N 55		
do	do	13	S 39 N 105		
5	N. Oak	20	N 53 N 91		
do	do	18	N 78 E 94		
6	N. Oak	11	N 46 E 40		
do	do	13	N 33 N 40		
S to B	1	N. Oak	26	S 13 N 13	
do	do	18	N 64 N 26		
2	Sugar	12	N 68 E 6		
do	Ash	-	N 73 N 20		
3	B. Oak	36	S 57 E 10		
do	N. Oak	8	N 51 N 70		
4	N. Oak	10	S 70 E 17		
do	do	16	S 80 N 88		
5	Jamarae	10	N 64 E 383		
do	N. Oak	14	S 74 N 53		
6	B. Oak	20	N 12 E 92		

From & to	Plant	Inches diam.	Courses they bear	Links dist.	
M to U at 1	Poplar	11	N 3 E 14		
do	N. Oak	22	S 12 N 10		
2	B. Oak	14	S 38 E 5		
do	Elm	8	N 52 N 22		
3	Ash	9	S 2 N 14		
do	do	16	N 8 N 20		
4	N. Oak	28	S 63 N 16		
do	B. Oak	5	N 77 E 26		
5	B. Oak	30	S 26 E 22		
do	N. Oak	14	N 10 E 35		
6	Ash	16	S 40 N 4		
do	do	10	N 23 E 15		
L to V	1	Ash	17	N 48 E 19	
do	Beech	18	N 48 E 19		
2	B. Oak	10	N 23 N 18		
do	Sugar	11	S 62 E 9		
3	Elm	5	S 86 E 15		
do	Spruce	20	N 88 N 21		
4	Spruce	9	S 27 N 8		
do	N. Oak	10	N 53 E 36		
5	N. Oak	14	N 8 E 6		
do	Ash	22	S 67 N 6		
6	B. Oak	40	S 24 N 100		
do	N. Oak	30	N 36 E 63		
R to W	1	Ash	14	N 43 N 8	
do	do	8	S 16 N 9		
2	Spruce	5	N 5 E 19		
do	Maple	11	S 43 N 9		
3	Spruce	12	S 57 N 20		
do	do	12	N 45 N 21		
4	N. Oak	20	N 76 E 50		
do	do	14	S 40 E 68		
5	B. Oak	16	N 76 N 59		
do	do	18	S 18 E 40		
6	Elm	8	N 2 N 10		
do	Spruce	3	S 80 E 21		