

Township N. 11 North, Range N. 13 East of Mer. (Mich. Ter.)

Total quantity 23,801.66 Acres Dec

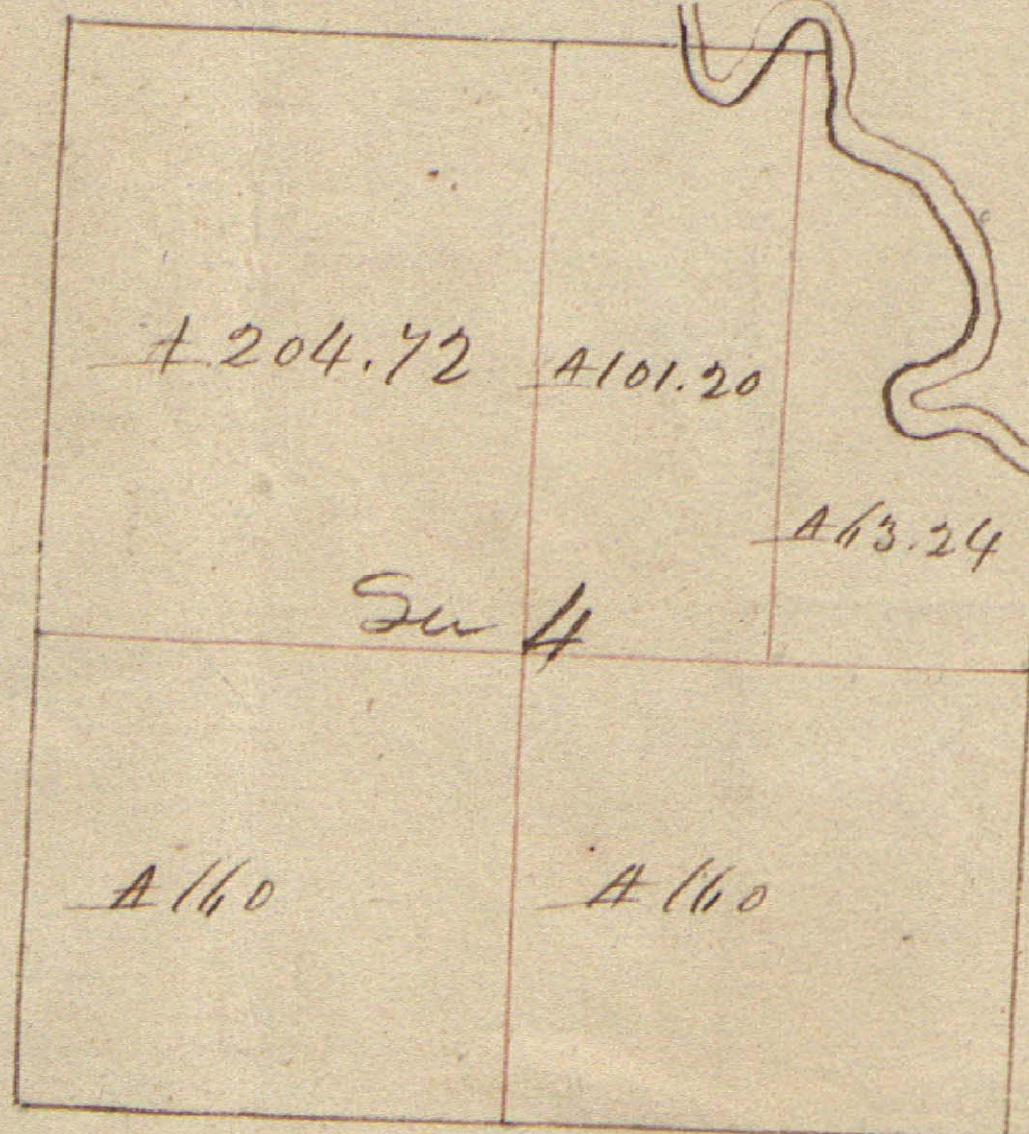
A true Copy from the Original on file in this Office

Surveyor General's Office  
July 20 - 1818

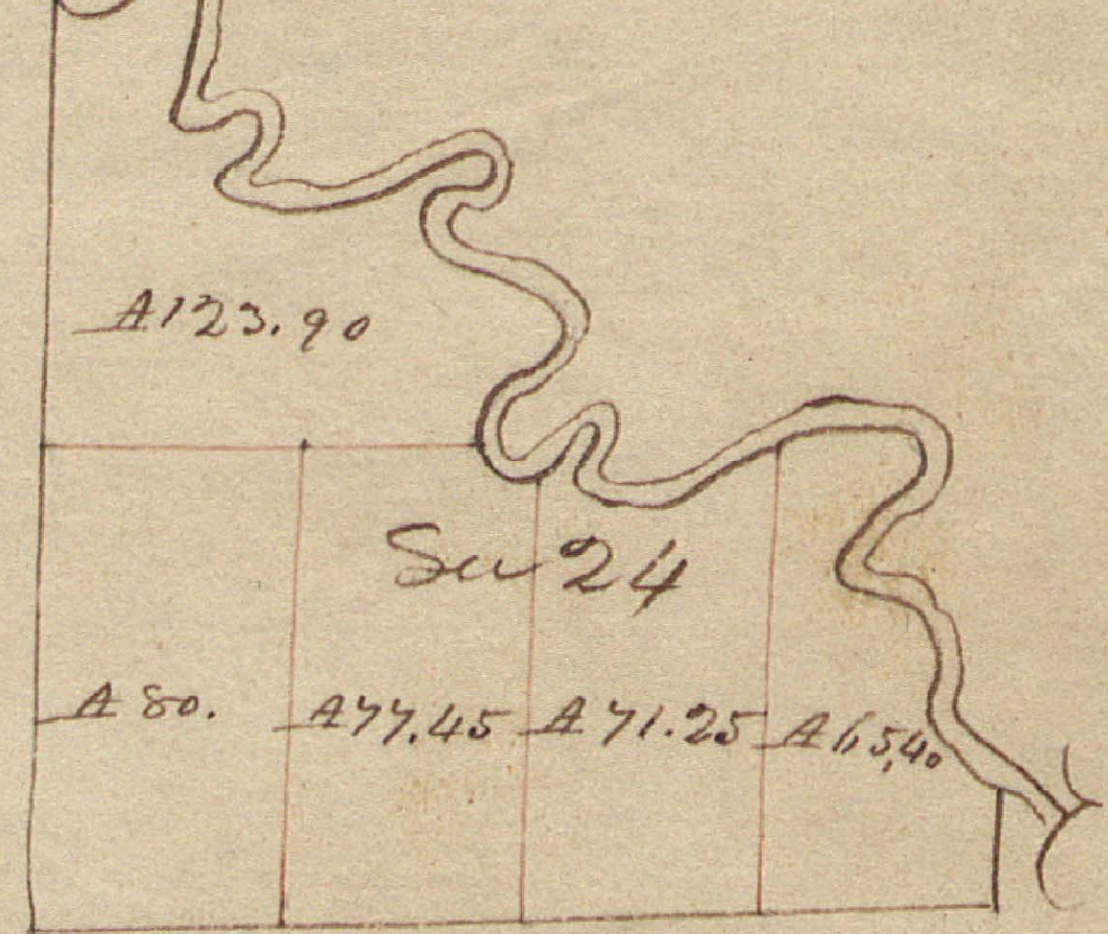
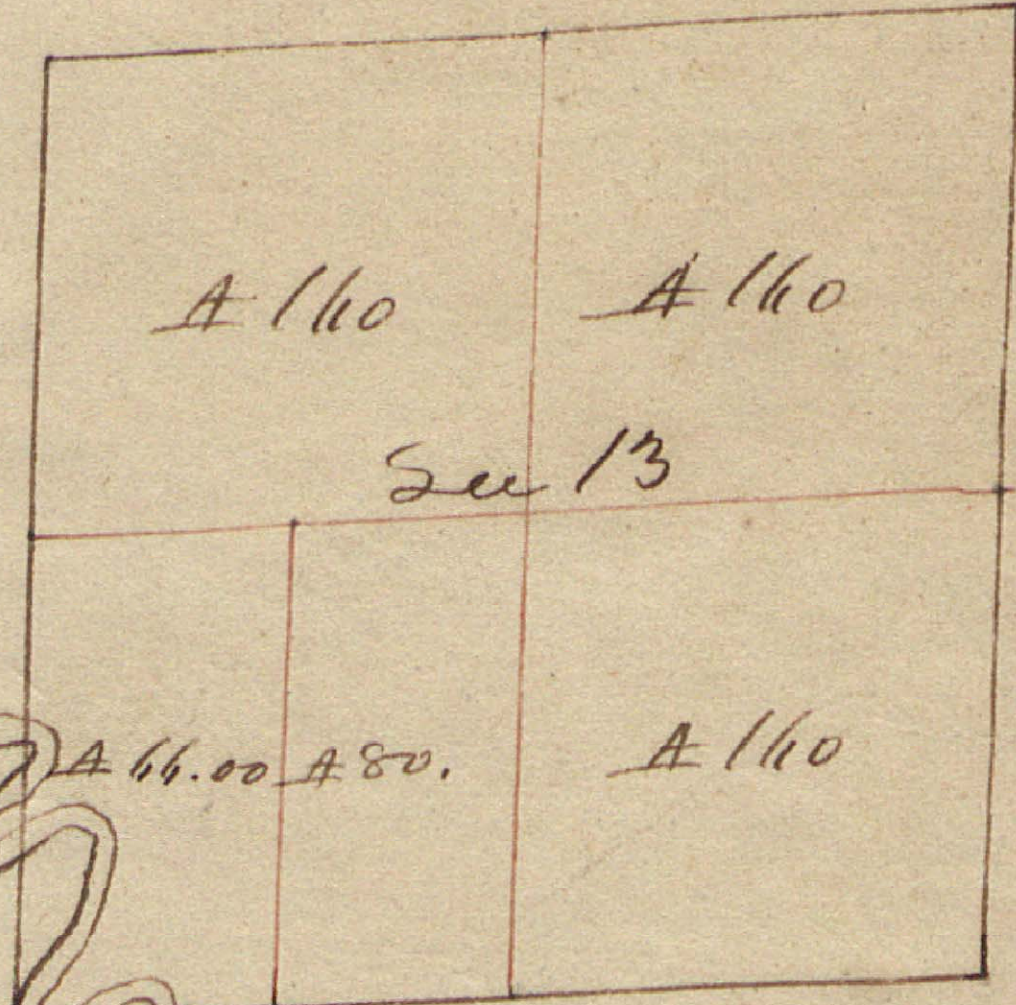
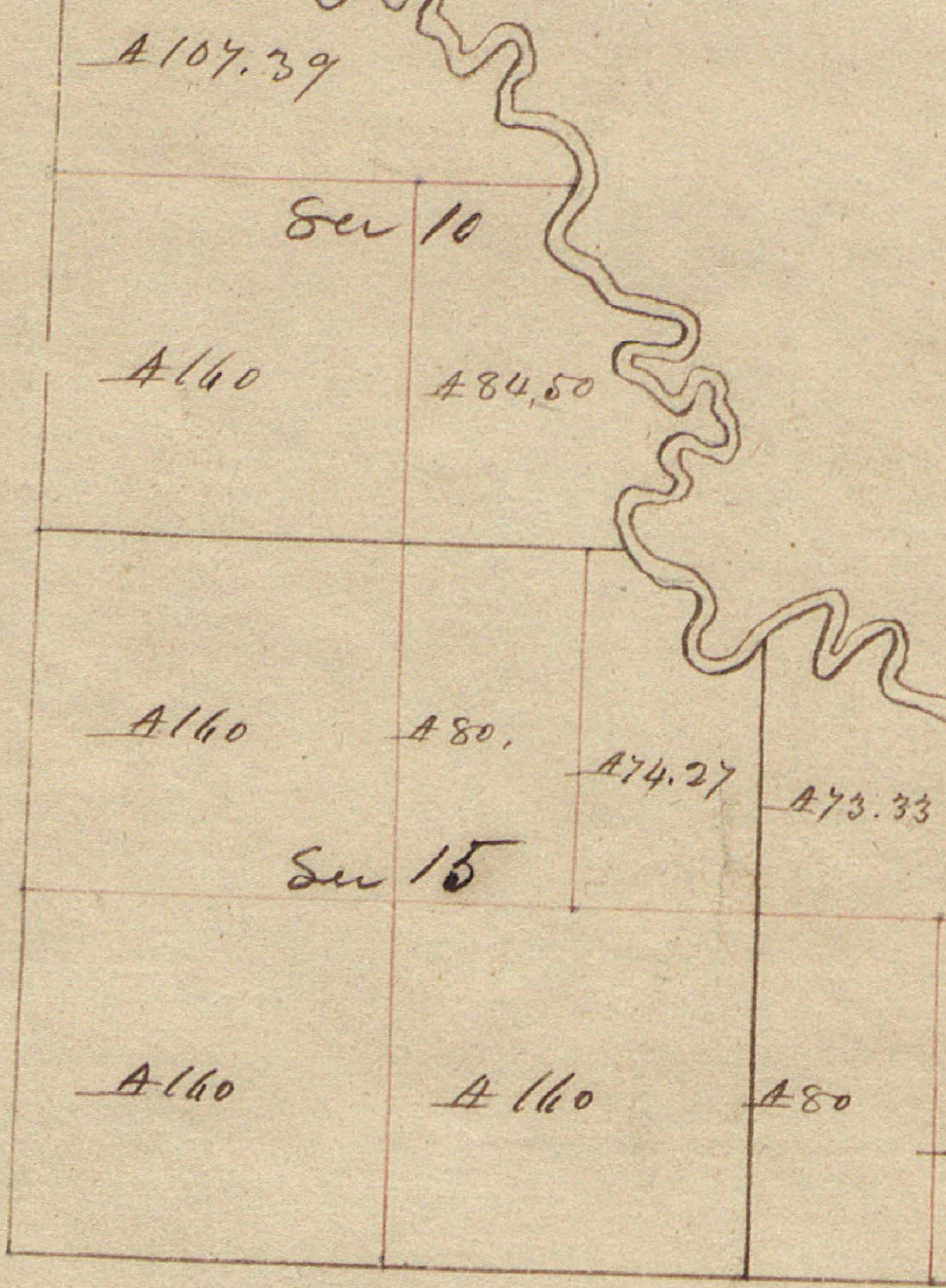
Edward Tiffin  
Surveyor General

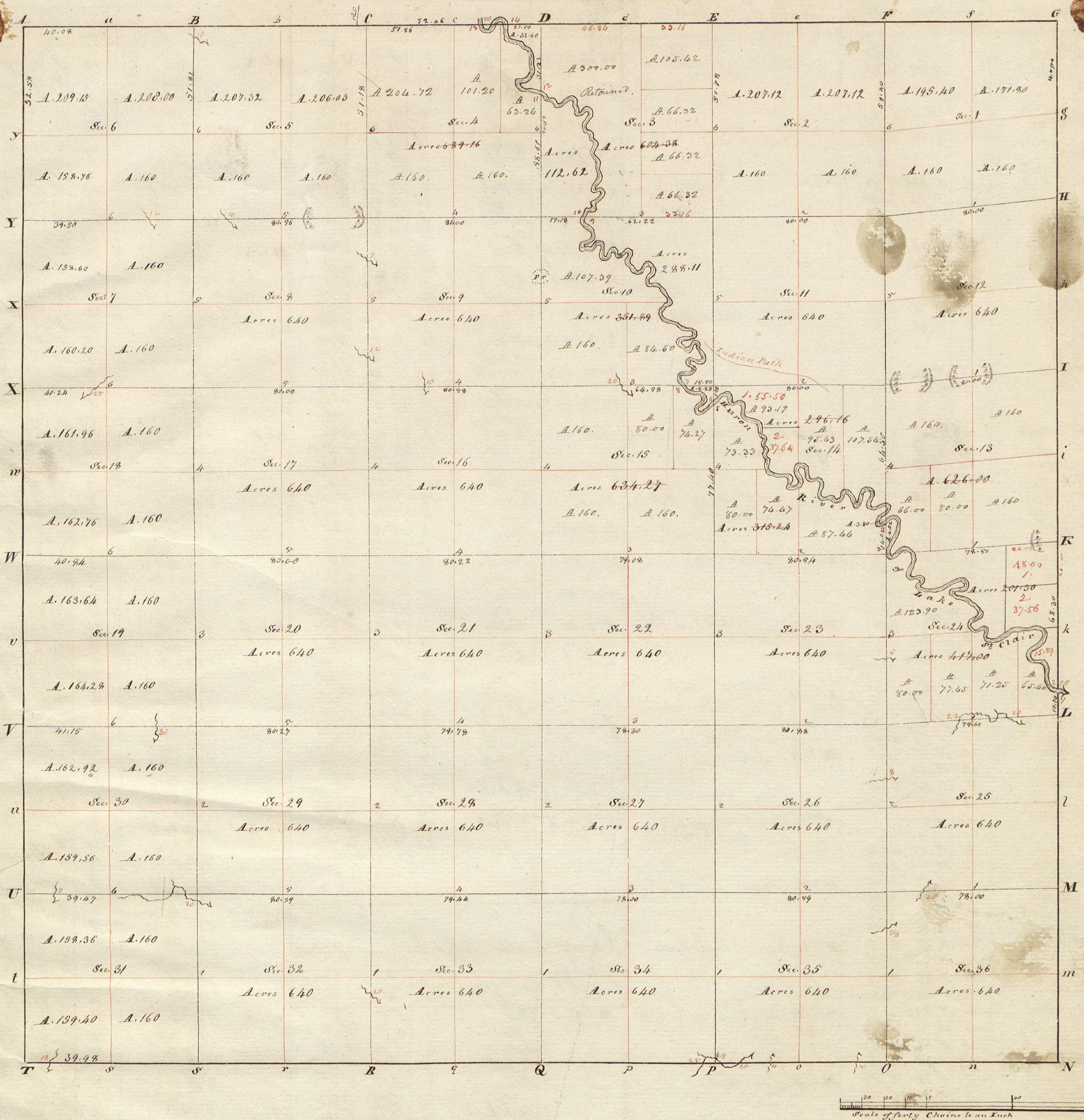
POOR COPY

Township No 2 N, Range 12 E



81





Township No. 11 North, Range No. 12 East of the Mer. (Mich. Ter.) Surveyed by Joseph Wampler 1817

Description of the Soil on the interior Sectional lines.

Between Sections	Quality &c.	Between Sections	Quality &c.	Between Sections	Quality &c.
35-36	Very fine rolling land - Oak, Ash, Beech, Sugar, Hng <sup>th</sup> Spice	18-19	Level rich land - timber Oak, Ash, Beech, Spruce	7-8	Very good land
25-26	Same	28-29	Same	5-8	Sugar
25-26	Same	21-28	Same (Wet)	6-7	Level Rich land
31-35	Rich level land - Oak, Elm, Beech, Spruce, Ash, Hng <sup>th</sup> Spice	16-21	Same	5-6	Very fine land
26-35	Level good land	16-17	Same	13-24	Very good level land - rest poor - Oak, Spruce, hick, Ash, Elm
26-27	Rich level land - timber as above	7-16	Same (Wet)	12-14	Poor low wet land - Ash, Sassafras, Oak
23-26	Same	8-9	Same (Wet)	12-13	Poor low wet land - Ash, Sassafras, Oak
22-23	Same	4-9	Same	21-22	Rich level Wet land - R. C. & L. m. Hng <sup>th</sup> Spice
14-23	Same	4-15	Good level land - Oak, Elm, Spruce, Beech, Sugar, Hng <sup>th</sup> Spice	1-2	Level
14-15	Same	31-32	Level Wet land	12-15	Level rich land
33-34	Fine rolling land - Oak, Beech, Ash &c.	29-32	Level	11-14	Rolling good land - Beech, Spruce, Elm, Oak, Ash, Hng <sup>th</sup> Spice
27-34	Level rich land - Oak, Ash, Elm, Spruce	30-31	Fine land	10-11	Good land - tolerable well timbered
27-28	Level Wet land - Oak, Elm, Beech, Spruce	24-30	Rich level land - Oak, Beech & Hng <sup>th</sup> as above	2-11	Poor land - Oak, Elm, Maple, Hng <sup>th</sup> Spice
22-27	Fine rich land - Beech, Oak, Ash, Elm	20-29	Level Wet	2-3	Level Wet land - R. C. & L. m. Hng <sup>th</sup> Spice
21-22	Same	19-30	Level	3-10	Good land - Oak, Spruce, Ash, Elm &c.
15-21	Good level land	10-20	Rich level		
15-16	Level Wet rich land - Oak, Elm, Ash	17-20	Fine Rich level land - Oak, Ash, Spruce, Beech		
10-15	Level rich land - timber Oak, Ash, Beech, Elm, Spruce	15-19	Same		
9-10	Same	17-18	Same		
3-11	Same	8-17	Same		
		7-18	Same		

Copy

True Meridian  
Variation 41° 10' E.

Posts	Bearing trees	Inches diam.	Courses they bear	Links dist.	Quality of the Soil	From I to	Bearing trees	Inches diam.	Courses they bear	Links dist.
A	B. Oak	9	S 35	N 15						
B	Ash	11	N 70	E 19						
C	Beech	20	S 87	E 17						
D	Ash	22	S 89	E 25						
E	W. Oak	7	N 15	N 8						
F	B. Oak	10	S 22	E 76						
G	Ash	16	N 11	E 42						
H	Beech	24	N 66	E 31						
I	Ash	13	S 17	N 26						
J	Sycamore	3	N 61	N 2						
K	B. Oak	11	N 41	E 13						
L	Hickory	9	N 76	N 16						
M	Hickory	9	N 80	E 44						
N	Beech	4	N 51	N 4						
O	W. Oak	5	N 56	E 16						
P	Poplar	5	S 30	N 13						
Q	Elm	14	N 12	E 17						
R	Hickory	8	N 71	N 47						
S	Elm	5	N 32	N 11						
T	Hickory	10	N 39	N 10						
U	B. Oak	11	S 28	N 28						
V	Sugar	6	S 75	N 14						
W	Post in Swamp	no trees								
X	Sycamore	8	N 65	N 10						
Y	Sycamore	14	N 87	N 29						
Z	W. Oak	6	North	32						
aa	Small Beech corner									
ab	W. Oak	15	N 30	E 15						
ac	do	5	S 10	N 11						
ad	do									
ae	Post in Swamp									
af	Sycamore	13	S 11	N 17						
ag	W. Oak	36	N 31	N 41						
ah	W. Oak	22	N 35	E 2						
ai	Hickory	5	S 53	N 11						
aj	do	4	S 45	E 4						
ak	Hickory	7	N 32	E 20						
al	Ash	10	N 68	N 5						
am	Ash	24	N 76	N 8						
an	Elm	11	S 28	N 13						
ao	Beech	8	S 16	N 10						
ap	W. Oak	26	N 19	N 10						
aq	Sycamore	5	S 44	N 37						
ar	Sycamore	7	N 1	N 4						
as	Ash	7	S 21	N 33						
at	Beech	5	N 35	N 14						
au	Beech	10	S 3	N 11						
av	Beech	5	N 43	E 18						
aw	Beech	8	N 70	N 23						
ax	do	13	S 64	E 19						
ay	do	8	S 49	N 19						
az	Beech	16	S 19	E 20						
ba	do	6	S 2	N 23						
bb	Ash	5	S 19	N 17						
bc	Elm	8	N 56	E 12						
bd	Beech	14	N 87	N 25						
be	do	7	N 47	E 19						
bf	Sugar	20	N 60	E 17						
bg	do	9	N 73	N 13						
bh	Ash	26	N 40	E 16						
bi	Elm	6	S 43	N 4						
bj	Ash	7	S 1	E 13						
bk	Elm	44	N 11	N 15						
bl	Ash	9	N 22	E 6						
bm	do	35	S 6	N 17						
bn	Sycamore	22	S 15	E 1						
bo	do	6	S 68	N 4						
bp	W. Oak	16	S 1	N 23						
bq	Sycamore	5	N 17	E 26						
br	Elm	6	S 74	E 4						
bs	do	10	S 102	N 33						
bt	Elm	18	S 102	N 33						
bu	Beech	15	S 70	N 23						
bv	Sycamore	11	S 24	N 14						
bv	Sycamore	22	S 27	N 7						
bw	Beech	5	S 25	N 21						

### Corners on Huron River.

Posts	Bearing trees	Inches diam.	Courses they bear	Links dist.
1	Beech	10	S 6 E	70
2	Sycamore	30	S 62 E	46
3	Sycamore	20	N 70 E	3
4	Elm	7	S 56 W	28
5	do	5	S 29 E	11
6	do	7	S 40 W	27
7	Walnut	16	S 27 W	18
8	Sycamore	8	S 75 E	5
9	Post			
10	do			
11	do			
12	do			
13	do			
14	do			

### Anterior Quarter Section Corners described

From I to	Bearing trees	Inches diam.	Courses they bear	Links dist.
M to U at 1	Sycamore	5	S 21	E 30
2	Sycamore	5	N 27	N 10
3	Ash	7	N 79	N 17
4	do	7	N 37	N 14
5	do	11	N 82	E 19
6	do	11	S 65	N 53
7	do	17	N 21	N 3
8	Sycamore	18	S 31	N 30
9	Hickory	7	S 24	N 29
10	do	7	S 22	E 28
11	do	25	N 19	E 18
12	do	6	S 16	N 17
13	do	20	N 70	N 20
14	do	13	N 59	N 8
15	do	38	S 14	E 24
16	do	20	N 71	N 10
17	do	11	N 81	E 23
18	do	6	N 50	E 8
19	do	20	S 28	N 26
20	do	13	N 70	E 19
21	do	16	S 88	N 18
22	do	18	S 74	E 18
23	do	12	S 53	E 27
24	do	16	S 61	N 8
25	do	8	N 84	E 12
26	do	20	N 72	N 16
27	do	11	S 44	E 17
28	do	7	N 65	N 24
29	do	10	N 15	E 7
30	do	10	S 10	E 17
31	do	10	N 34	N 24
32	do	15	S 82	E 33
33	do	36	N 39	E 30