

Township N° III North, Range N° XII East of Mer. (Mich. Ter.)

Acres. Decd
Total quantity 23,210,90

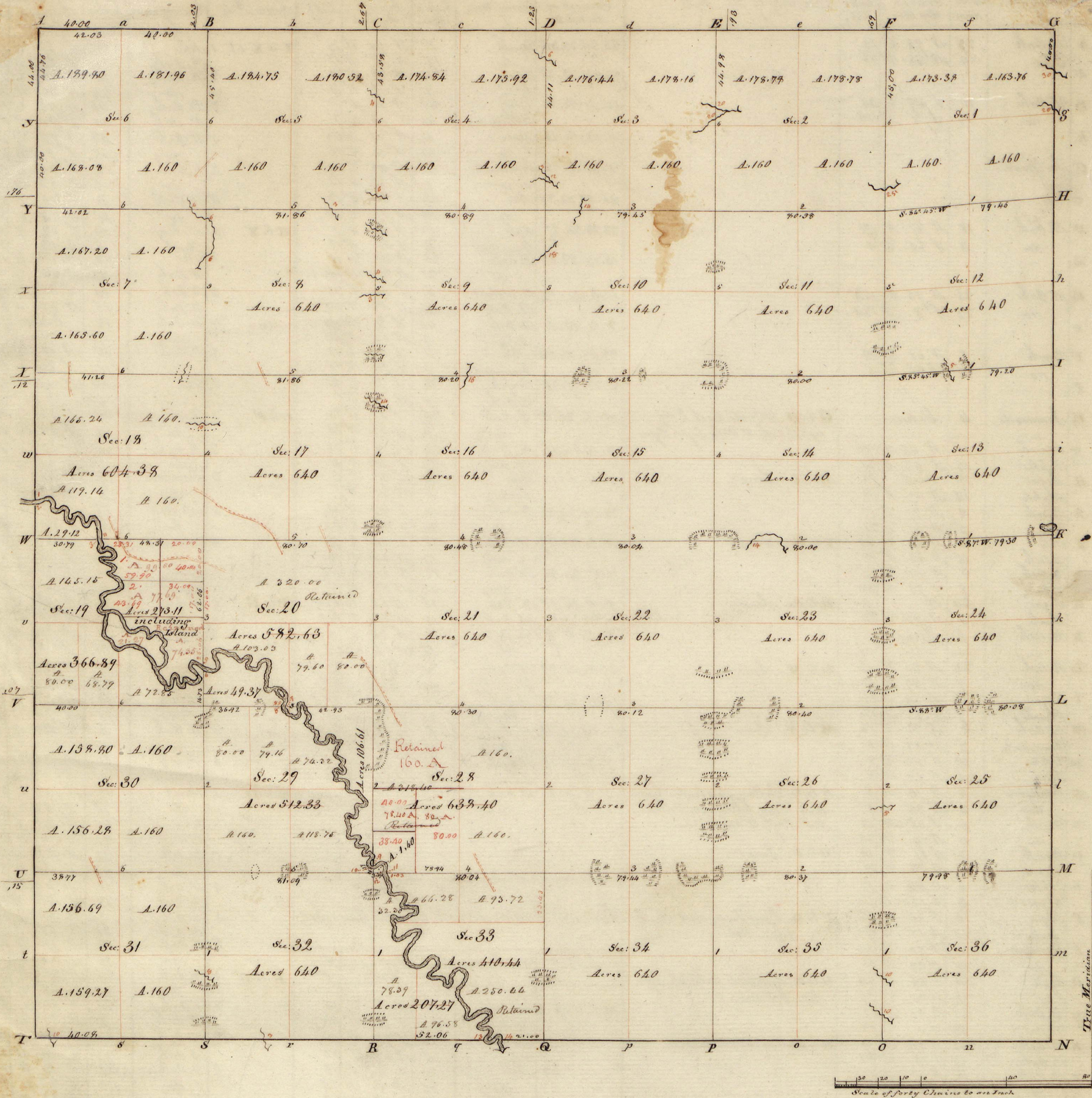
A true Copy from the Original on file in this Office

Surveyor General's Office
July 20 - 1919

Edward Liffin
Surveyor General

Van. 4.29 '8

3 N 12 E MICH



Township N^o III North, Range N^o XII East of the Meridian (Mich: Ter:) Surveyed by Jos: Wampler 1818

Description of the Soil on the interior Sectional lines.

| Between Sections | Quality &c. | Between Sections | Quality &c. | Between Sections | Quality &c. |
|------------------|--|------------------|---|------------------|--|
| 35.36 | Good level land, Ash, beech, Oak, Elm, Linn, Poplar, Sugar, Spruce | 27.28 | Poor level, sandy land | 4.5 | Fine level land, Oak, Ash, Elm, Linn, Spruce |
| 25.26 | Low level wet land, rather swampy, Birch, Elm, Linn, Ash | 27.29 | Swampy - Ash, Oak, Beech | 32.31 | Rich swampy land, Ash, Linn, Spruce |
| 28.29 | Level good land, Birch, Oak, Ash, Spruce | 27.28 | Level poor land, scrubby Oak | 29.32 | Thin plain & bottom land, Oak, Ash, Linn |
| 24.25 | First 1/2 same, North 1/2 swampy, Ash, Elm, Linn | 22.27 | Poor land to prairie, balance rich & swampy | 30.31 | Level thin land |
| 22.24 | Tolerable, Oak, Beech, Ash | 21.22 | Poor level land, Oak very scrubby & thin | 29.30 | Same |
| 13.24 | Swampy - Ash, Oak, Elm, Spruce | 15.22 | Tolerable land, Oak, Ash, Elm, Linn, Sugar, Spruce | 20.29 | Good bottom land |
| 12.14 | Good land, Oak, beech, Ash | 15.16 | Level poor Oak land | 19.20 | Level poor land, thinly timbered with 1000 Oak |
| 12.13 | Tolerable land, Oak, Ash, maple | 10.15 | Tolerable land, Oak, Ash, Tamarac, pine | 19.20 | Level bottom rich but low, rest thin level, Oak, Ash, Cedar |
| 11.12 | Low land, Oak, Ash, Hickory, maple, 1/2 mountain tree | 9.10 | Part 1/2 poor, balance fine bottom, Ash, Elm, Linn | 17.20 | Level land, tolerable soil |
| 1.12 | Fine land, Oak, Ash, Elm, Spruce | 3.4 | Fine rich land, Oak, Linn, Ash, beech, Elm, Sugar | 48.19 | Thin 1000 Oak land |
| 1.2 | Very fine land, Oak, Ash, Elm, beech | 2.14 | Level mostly bottom, timbered very brushy with cedar | 17.48 | Level thin land, Oak timber |
| 34.35 | Low wet land, Ash, beech, Oak, Linn | 32.33 | Part swampy & part thin plain land, Oak, Ash, Linn | 18.17 | Good land, Oak & Hickory |
| 26.35 | Level good land, timber same | 28.33 | First 1/2 good, Oak, Ash, rest poor Oak land | 7.48 | Poor land, scrubby Oak |
| 26.27 | Swampy land, Birch, Ash | 28.29 | Tolerable land, Oak, Ash, Tamarac, Cedar | 7.8 | Part 1/2 good level Oak land, rest rolling & clay - Oak |
| 23.26 | Same | 21.28 | Level poor Oak land | 5.8 | Rolling thin Oak land |
| 22.23 | Very swampy - Oak, Elm | 20.21 | Level poor land | 6.7 | Very fine land, a little rolling, Oak, Ash, Elm |
| 14.23 | Swampy low, Birch, Ash, Oak | 16.21 | Same | 5.16 | Mostly fine land, Oak, Ash, Elm, Linn, rest poor & thin Oak land |
| 14.15 | Low wet land, Birch, Ash, Elm, Linn, Poplar | 16.17 | Level & undulating land, Oak, Tamarac, Hickory, 1/2 Alder, Spruce | | |
| 9.14 | Low part middle, Oak, Ash, Maple | 9.4 | Good land, very brushy & thickly with aspen, Oak, Tamarac, Spruce | | |
| | | 8.9 | Level land, thin soil, brushy with Oak, Alder &c. | | |

| Posts | Bearing trees of | Inches diam. | Courses they bear | Links dist. | Quality of the Soil | Corners of Sections | Bearing trees of | Inches diam. | Courses they bear | Links dist. | From I to | Bearing trees of | Inches diam. | Courses they bear | Links dist. | |
|-------|------------------|--------------|-------------------|-------------|---------------------|---------------------|--|--------------|-------------------|-------------|-------------|------------------|--------------|-------------------|--------------|--|
| A | W. Oak | 13 | S 57 N 21 | | | 25. 26. 25. 26 | Beech | 7 | N 22 1/2 N 24 | | I to X at 1 | Ash | 10 | S 10 E 29 | | |
| a | do | 19 | N 80 E 22 | | | | do | 20 | S 22 E 21 | | | Elm | 12 | S 22 E 37 | | |
| B | D. Oak | 10 | S 51 N 21 | | | 23. 24. 25. 26 | N. Oak | 20 | N 64 N 19 | | 2 | Ash | 14 | S 27 N 11 | | |
| b | do | 18 | S 25 E 80 | | | | do | 16 | N 31 E 5 | | | do | 17 | S 48 N 19 | | |
| C | W. Oak | 10 | S 83 1/2 N 28 | | | 13. 14. 23. 24 | Beech | 5 | S 88 N 20 | | 3 | Aspen | 38 | S 22 E 18 | | |
| c | do | 11 | S 72 E 40 | | | | do | 14 | N 54 E 11 | | | do | 18 | S 11 N 48 | | |
| D | Poplar | 26 | S 82 N 12 | | | 11. 12. 13. 14 | Beech | 5 | S 7 E 18 | | 4 | Cherry | 6 | S 45 E 39 | | |
| d | Honewood | 5 | S 54 E 13 | | | | do | 6 | N 45 N 50 | | 5 | W. Oak | 18 | S 67 N 24 | | |
| E | Beech | 7 | N 20 N 4 | | | 1. 2. 11. 12 | W. Oak | 40 | S 57 E 27 | | | do | 20 | N 77 E 34 | | |
| e | do | 10 | S 56 E 22 | | | | do | 5 | S 48 E 11 | | 6 | D. Oak | 30 | N 30 N 12 | | |
| F | Poplar | 13 | N 84 1/2 N 9 | | | 26. 27. 24. 25 | Birch | 5 | N 82 1/2 N 4 | | | W. Oak | 32 | N 87 N 94 | | |
| f | Beech | 8 | S 39 E 11 | | | | do | 14 | N 7 E 37 | | H to Y | 1 | Elm | 14 | S 51 N 10 | |
| G | Honewood | 4 | N 10 N 5 | | | 22. 23. 26. 27 | Beech | 5 | N 74 N 20 | | | do | 8 | S 80 E 30 | | |
| g | do | 3 | N 75 E 5 | | | | do | 5 | N 74 N 20 | | 2 | Aspen | 5 | S 42 E 38 | | |
| H | W. Oak | 18 | S 28 N 18 | | | 14. 15. 22. 23 | Ash | 11 | S 77 1/2 N 9 | | | D. Oak | 10 | N 34 E 14 | | |
| h | do | 14 | N 24 1/2 N 43 | | | | do | 11 | S 74 E 15 | | 3 | Amurac | 12 | S 73 E 14 | | |
| I | Poplar | 12 | N 31 E 18 | | | 10. 11. 14. 15 | Ash | 7 | S 54 N 28 | | | Maple | 6 | S 54 N 39 | | |
| i | B. Oak | 18 | N 82 E 7 | | | | do | 9 | N 85 E 23 | | 4 | Beech | 6 | S 80 E 7 | | |
| i | do | 4 | S 63 N 8 | | | 2. 3. 10. 11 | W. Oak | 4 | N 15 N 14 | | | Honewood | 8 | N 85 N 5 | | |
| k | Elm | 16 | N 52 E 18 | | | | do | 7 | S 30 E 7 | | 5 | W. Oak | 9 | N 75 N 36 | | |
| k | D. Oak | 22 | N 83 E 6 | | | 27. 28. 33. 34 | B. Oak | 20 | S 46 N 74 | | | Nichory | 8 | N 15 N 34 | | |
| k | W. Oak | 14 | N 20 N 17 | | | | do | 18 | N 62 E 93 | | 6 | Elm | 8 | N 64 N 20 | | |
| k | Elm | 24 | Corner | | | 21. 22. 27. 28 | D. Oak | 13 | N 45 N 17 | | | do | 5 | S 11 E 44 | | |
| L | D. Oak | 6 | Corner | | | | W. Oak | 7 | N 72 E 37 | | O to F | 1 | Ash | 16 | S 62 N 10 | |
| l | do | 22 | S 42 E 22 | | | 15. 16. 21. 22 | W. Oak | 12 | N 74 E 31 | | | Lign | 10 | S 62 E 13 | | |
| m | Ash | 5 | S 14 N 12 | | | | do | 12 | N 4 N 120 | | | Beech | 5 | S 51 N 6 | | |
| m | do | 36 | S 75 E 6 | | | | do | 11 | S 27 1/2 E 151 | | | do | 13 | S 88 E 38 | | |
| n | do | 22 | N 34 N 6 | | | | do | 18 | S 33 N 11 | | | do | 5 | S 6 E 11 | | |
| n | Birch | 3 | N 45 E 6 | | | | H to I. Level 2 nd rates dry - W. Oak, Beech, Ash, Honewood | 8 | N 25 N 12 | | | W. Oak | 5 | N 5 E 11 | | |
| n | Beech | 12 | N 68 N 21 | | | | | 8 | N 44 E 10 | | | W. Oak | 5 | N 77 N 13 | | |
| o | W. Oak | 5 | Corner | | | | I to K. Same | 14 | N 4 N 10 | | | do | 8 | N 77 N 16 | | |
| o | do | 4 | N 51 N 14 | | | | | 12 | S 64 E 7 | | | Maple | 6 | S 63 1/2 E 23 | | |
| o | do | 14 | N 56 E 16 | | | | | 18 | N 65 E 13 | | | W. Oak | 18 | N 47 N 6 | | |
| o | do | 9 | S 76 N 16 | | | | | 12 | N 27 E 16 | | | Beech | 8 | N 87 E 30 | | |
| o | do | 7 | N 80 E 14 | | | | | 10 | N 76 E 20 | | P to E | 1 | Beech | 18 | N 54 1/2 N 6 | |
| o | do | 5 | S 61 N 2 | | | | | 10 | N 74 1/2 N 3 | | | do | 12 | N 77 E 29 | | |
| o | do | 11 | N 41 E 13 | | | | | 4 | S 25 E 50 | | | do | 4 | N 80 E 8 | | |
| p | Ash | 13 | S 17 N 26 | | | | | 8 | S 45 E 53 | | | Ash | 6 | N 65 N 9 | | |
| p | do | 13 | N 36 N 18 | | | | | 16 | N 54 N 72 | | | do | 12 | S 49 E 10 | | |
| p | Ash | 22 | S 22 N 11 | | | | | 13 | N 47 E 101 | | | Beech | 14 | N 27 E 18 | | |
| p | Beech | 24 | N 66 E 37 | | | | | 16 | S 44 E 57 | | | do | 5 | West | 3 | |
| q | D. Oak | 10 | S 23 1/2 E 76 | | | | | 18 | N 53 N 62 | | | D. Oak | 5 | S 30 E 5 | | |
| q | do | 16 | N 11 E 42 | | | | | 14 | N 68 E 92 | | | do | 8 | N 37 1/2 N 15 | | |
| q | W. Oak | 33 | N 30 E 8 | | | | | 19 | N 45 E 103 | | | W. Oak | 8 | S 28 E 17 | | |
| r | Beech | 11 | S 28 N 16 | | | | | 22 | N 7 1/2 N 36 | | | do | 4 | S 55 E 10 | | |
| r | W. Oak | 6 | N 50 E 6 | | | | | 40 | N 88 E 32 | | | Ash | 10 | S 62 E 12 | | |
| r | Honewood | 5 | N 47 N 20 | | | | | | | | | do | 10 | N 63 N 43 | | |
| r | Ash | 8 | N 15 N 16 | | | | | | | | | do | 10 | N 11 E 63 | | |
| r | Beech | 9 | N 87 N 18 | | | | | | | | | do | 6 | S 38 1/2 N 114 | | |
| r | Ash | 30 | S 187 E 11 | | | | | | | | | do | 7 | S 5 E 37 | | |
| r | Ash | 16 | S 44 N 11 | | | | | | | | | do | 18 | N 85 N 63 | | |
| r | do | 11 | N 70 E 19 | | | | | | | | | do | 8 | S 30 N 27 | | |
| r | D. Oak | 9 | N 38 N 45 | | | | | | | | | do | 7 | N 38 E 73 | | |
| r | do | 9 | N 24 E 11 | | | | | | | | | do | 16 | N 40 1/2 E 9 | | |
| u | W. Oak | 20 | N 10 E 24 | | | | | | | | | do | 17 | N 86 1/2 N 28 | | |
| u | do | 18 | N 82 N 60 | | | | | | | | | do | 22 | S 80 N 12 | | |
| v | W. Oak | 12 | N 69 E 20 | | | | | | | | | do | 18 | S 40 E 39 | | |
| v | D. Oak | 14 | S 7 E 16 | | | | | | | | | do | 16 | N 17 E 11 | | |
| w | Honewood | 14 | N 31 E 21 | | | | | | | | | do | 9 | S 45 E 14 | | |
| w | Nichory | 16 | S 1 E 23 | | | | | | | | | do | 11 | N 6 N 50 | | |
| x | D. Oak | 10 | N 12 1/2 N 37 | | | | | | | | | do | 17 | S 41 1/2 E 25 | | |
| x | do | 26 | S 60 1/2 N 52 | | | | | | | | | do | 18 | N 84 E 327 | | |
| y | Swampy Oak | 20 | S 58 E 23 | | | | | | | | | do | 11 | N 48 N 27 | | |
| y | D. Oak | 7 | S 30 N 9 | | | | | | | | | do | 22 | S 89 1/2 E 27 | | |