

Township N. V. North, Range N. XIV East of the Mer. (Mich. Ter.)

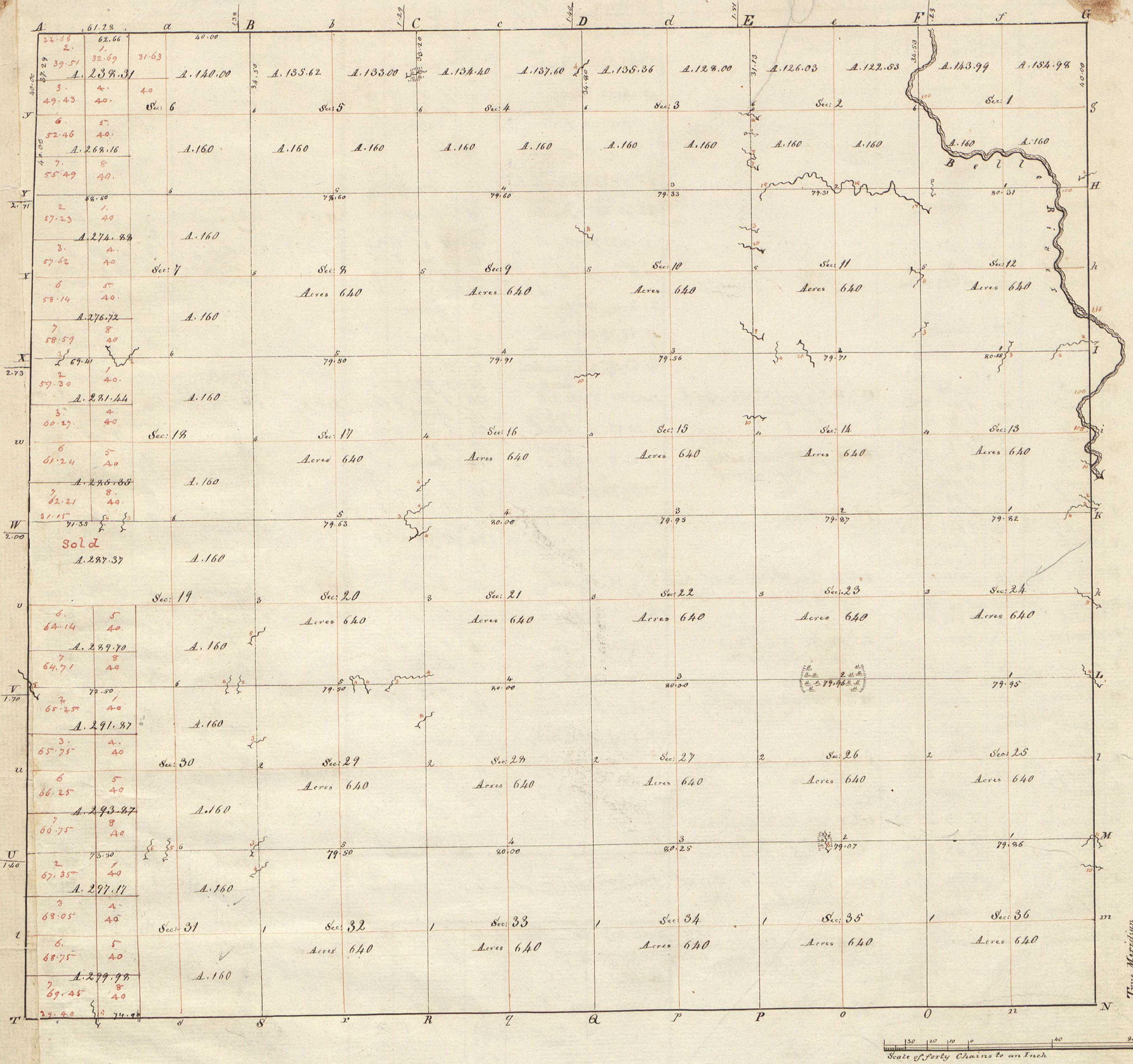
Surveyor General's Office
 Feby 20th 1919

Acres Due
 Total quantity 24,236.33

A true Copy from the Original on file in this Office

Roland Tiffin
 Surveyor General

FOR COPY



Township N^o V North, Range N^o XIV East of the Meridian. (Mich. Ter.) Surveyed by William Preston. 1817.

Description of the Soil on the interior Sectional lines.

Between Sections	Quality &c.	Between Sections	Quality &c.	Between Sections	Quality &c.
35 & 36	2 ^d rates dry swelling sandy & gravelly - w. B. Oak, Sugar, Gum, Elm, Birch, Ash, & part fallen & light from swampy low	27 & 28	Good 2 ^d rates - Beech, Sugar, Gum, Elm, Birch, Ash	4 & 5	Wet 3 ^d rates - Beech, Ash, Elm, birch &c.
35 & 26	Same	27 & 24	Wet 2 ^d rates - timber - Same	31 & 32	Same
25 & 26	Level 2 ^d rates - B. Ash, Gum, Elm, Oak &c. fallen	27 & 24	Same	29 & 32	Level & mostly dry 2 ^d rates - Beech, Sugar, Gum
24 & 25	First half same - 1 st half dry	27 & 28	Same	29 & 30	Partly dry 2 ^d rates
23 & 24	Wet 2 ^d rates - B. Ash, Elm, Gum, Maple	22 & 27	Same	20 & 29	Rolling & dry 2 ^d rates - fallen timber
13 & 24	Same - B. Ash, Gum, Beech, Sugar, Elm, Oak, W. Ash, birch &c.	21 & 22	Same (very wet)	19 & 20	Same
13 & 14	Same	15 & 22	First half wet ash, birch & 2 ^d rates - last 1/2 swamps	17 & 20	Level & mostly wet 2 ^d rates - Beech, Gum, Elm some fallen
12 & 13	Same	15 & 16	Wet 2 ^d rates - timber - fallen	17 & 18	Same
11 & 12	Same	9 & 10	Level & dry 2 ^d rates - timber part fallen	8 & 17	Level & part dry 3 ^d rates - timber fallen
1 & 12	Same	9 & 10	Same	7 & 8	2 ^d rates level & dry - timber fallen
1 & 2	First 1/2 dry 2 ^d rates - last 1/2 dry 3 ^d rates sandy & gravelly - Beech, Sugar, Gum	3 & 4	Wet 2 ^d rates - Beech, Ash, Sugar, Elm, (part fallen)	5 & 8	Level & very wet 2 ^d rates
31 & 35	Wet 2 ^d rates - B. Ash, Beech, Elm	22 & 23	Level & dry 2 ^d rates - timber same	5 & 6	First 1/2 B. Ash, Swamp, last 1/2 dry 2 ^d rates - Beech, Sugar, Elm, Gum
28 & 35	Dry 2 ^d rates - B. Ash, Oak - fallen	28 & 33	Level part wet 2 ^d rates - timber fallen	30 & 31	Level & wet 2 ^d rates - timber fallen
26 & 27	Wet 2 ^d rates - B. Ash, Gum, Birch, W. Oak - fallen	28 & 29	First 1/2 wet 2 ^d rates - last 1/2 dry 2 ^d rates - timber & fallen	19 & 30	Level & part dry 2 ^d rates
23 & 26	Same	21 & 28	2 ^d rates - fallen timber	18 & 19	Same
22 & 23	Same	20 & 21	Level & dry 2 ^d rates - Beech, Sugar, W. Oak	7 & 18	Same
14 & 23	Same	16 & 21	Level & very wet 2 ^d rates	6 & 7	First 1/2 mostly B. Ash Swamp 2 ^d rates - last 1/2 2 ^d rates - timber fallen
14 & 15	Same	16 & 17	Wet 2 ^d rates - Beech, Elm, Gum, birch &c.		
11 & 14	Level & part wet 2 ^d rates - B. Ash, Elm, Gum, Beech, W. Oak	9 & 16	Same		
10 & 11	Same	8 & 9	Same		
		4 & 9	Same		

Posts	Bearing trees	Inches diam.	Courses they bear	Links dist.	Quality of the soil	Corners of sections	Bearing trees	Inches diam.	Courses they bear	Links dist.	From I to	Bearing trees	Inches diam.	Courses they bear	Links dist.
A	Elm	6	Corner			25, 26, 25, 26	Ironwood	6	North	15	I to X at	1 Elm	8	N 27 E 25	
a						23, 24, 25, 26	B. Ash	5	Corner			2 B. Cherry	14	S 61 N 9	
B	Beech	6	Corner			13, 11, 23, 24	Beech	6	N 47 1/2 E 18			3 Sugar	2 1/2	S 69 E 20	
b						11, 12, 13, 14	B. Ash	16	S 72 N 22			4 Elm	8	S 2 E 23	
C	Elm	14	N 21 N 14			1, 2, 11, 12	Syc	3	Corner			5 Elm	5	Corner	
c	Beech	8	N 61 E 16			26, 27, 24, 25	B. Ash	8	Corner			6 Beech	10	N 34 E 7	
D	Maple	5	Corner			22, 23, 26, 27	Horobean	3	Corner		H to Y	1 Sugar	10	S 70 N 14	
d						14, 15, 22, 23	Beech	9	S 20 N 10			2 do	7	S 22 N 15	
E	Sugar	8	N 11 N 13			10, 11, 14, 15	B. Ash	5	S 20 E 38			3 Sugar	8	S 58 N 21	
e	Beech	13	S 27 E 38			2, 3, 10, 11	Sugar	20	S 5 N 15			4 Beech	10	S 9 N 19	
F	Sugar	12	S 13 E 41			27, 28, 33, 34	B. Ash	12	S 74 1/2 N 24			5 Beech	5	S 49 N 42	
f	do	14	S 41 E 48			21, 22, 27, 28	Beech	15	S 21 E 30			6 Elm	8	Corner	
G	Sugar	12	N 43 N 23			15, 16, 21, 22	B. Ash	16	S 62 E 4			7 B. Ash	12	N 74 N 19	
g	do	13	S 50 E 15		E to H. Good 2 nd rate, dry, sandy & gravelly soil - Beech, Sugar, Syc, Oak &c.	9, 10, 15, 16	Elm	18	S 35 E 13		O to F	1 Sugar	30	S 34 N 24	
h	Syc	10	S 23 N 21			3, 4, 9, 10	Syc	8	S 80 N 16			2 Beech	10	N 12 E 37	
h	N. Oak	3	S 5 1/2 N 27			28, 29, 32, 33	B. Ash	5	Corner			3 Elm	5	S 20 E 45	
i	Syc	10	N 43 E 24			20, 21, 28, 29	N. Walnut	6	Corner			4 B. Ash	7	Corner	
i	Elm	6	S 24 N 36			16, 17, 20, 21	Elm	12	N 64 E 24			5 Syc	3	Corner	
I	Dry Oak stump	13	Corner			8, 9, 16, 17	Hickory	5	S 83 E 38			6 Beech	5	N 8 1/2 E 19	
i	B. Cherry	2 1/2	S 10 E 32			4, 5, 8, 9	Elm	8	S 31 E 7			7 do	8	S 1 E	
i	do	2	S 21 E 9			17, 18, 19, 20	N. Ash	7	N 23 E 41			8 do	6	N 25 E 53	
K	Beech	8	S 1 1/2 N 9			17, 18, 19, 20	N. Ash	5	Corner		P to L	1 Beech	6	S 9 N 44	
k	Elm	12	N 60 N 17			5, 6, 7, 8	B. Ash	10	N 25 N 10			2 B. Ash	5	S 29 E 4	
k	Beech	10	S 27 N 18				Beech	8	S 54 N 7			3 Syc	3	S 15 E 36	
l	do	6	N 80 N 33				Beech	7	S 46 N 17			4 Sugar	2 1/2	South 11	
L	N. Oak	4	S 15 E 18				Maple	13	S 13 E 27			5 do	10	N 60 E 47	
l	Sugar	5	N 57 E 5				Elm	14	Corner			6 do	11	S 3 E 18	
l	Elm	11	S 45 E 7									7 do	6	N 71 E 20	
M	Sugar	10	S 11 E 14									8 do	5	S 71 N 10	
m	B. Ash	18	N 85 E 23									9 Sugar	30	Corner	
m	Beech	7	S 27 N 25									10 do	12	S 61 E 36	
N	Syc	3	Corner									11 do	6	N 66 N 46	
n	do	16	N 46 N 35									12 Maple	24	N 44 E 22	
n	Beech	10	S 22 N 15									13 N. Oak	7	N 67 E 4	
n	do	10	N 4 N 25									14 B. Ash	5	Corner	
O	Beech	8	N 41 1/2 N 42									15 Elm	6	Corner	
o	N. Oak	20	N 83 E 27									16 do	5	Corner	
o	Beech	6	Corner									17 do	30	Corner	
P	Sugar	10	S 89 E 25									18 Elm	12	S 61 E 36	
p	Beech	9	N 78 E 24									19 Beech	6	N 66 N 46	
p	Syc	8	S 64 E 11									20 Maple	24	N 44 E 22	
q	Ironwood	6	S 15 1/2 N 10									21 N. Oak	7	N 67 E 4	
q	Sugar	14	S 47 E 29									22 B. Ash	5	Corner	
q	do	11	East 31									23 Elm	6	Corner	
q	Syc	3	Corner									24 do	5	Corner	
R	Sugar	9	N 47 E 18									25 Ironwood	5	Corner	
r	Elm	8	S 24 N 20									26 Elm	4	Corner	
r	B. Ash	10	S 74 E 18									27 Sugar	18	N 46 E 21	
s	do	20	N 64 N 24									28 Beech	12	South 44	
s	B. Ash	8	Corner									29 Syc	5	Corner	
s	do	11	N 33 1/2 E 17									30 Beech	7	N 16 N 6	
s	B. Ash	5	S 39 E 4									31 N. Ash	10	S 86 N 10	
T	N. Oak	24	South 14									32 Ironwood	5	Corner	
t	Ash	14	S 64 N 24									33 Sugar	10	N 24 N 27	
v	Sugar	20	N 4 N 24									34 Beech	8	N 62 N 11	
v	Beech	12	S 85 E 15									35 Elm	14	N 48 E 15	
v	do	4	Corner									36 do	12	S 72 E 22	
v	do	4	Corner									37 Sugar	10	Corner	
w	Maple	16	Corner									38 Syc	3	S 52 N 16	
w	do	4	Corner									39 Horobean	3	Corner	
x	Ironwood	6	Corner									40 Syc	5	Corner	
x	do	4	Corner									41 N. Oak	11	N 46 N 6	
y	Beech	7	Corner									42 B. Ash	7	South 8	
y	do	4	Corner												
z	do	4	Corner												
z	do	8	Corner												
z	do	12	Corner												

Interior Quarter section corners described

From I to	Bearing trees	Inches diam.	Courses they bear	Links dist.
M to U at 1	N. Oak	4	N 64 E 54	
	B. Cherry	3	S 17 E 32	
	B. Cherry	2 1/2	S 83 N 8	
	Butternut	2	N 86 E 20	
	Hickory	4	Corner	
	Cherry	5	Corner	
	Elm		Corner	
	Ironwood	4	Corner	
L to V	1 Syc	4	Corner	
	2 Sassafras	6	Corner	
	3 B. Ash	8	Corner	
	4 Beech	10	Corner	
	5 Cherry	3	Corner	
	6 Sugar	12	N 51 N 21	
	do	12	N 21 E 33	
R to W	1 Ironwood	4	Corner	
	2 Elm	10	N 72 N 27	
	Willow	4	N 8 1/2 E 42	
	3 Sugar	11	Corner	
	4 B. Ash	4	Corner	
	5 Sugar	8	Corner	
	6 Beech	12	Corner	