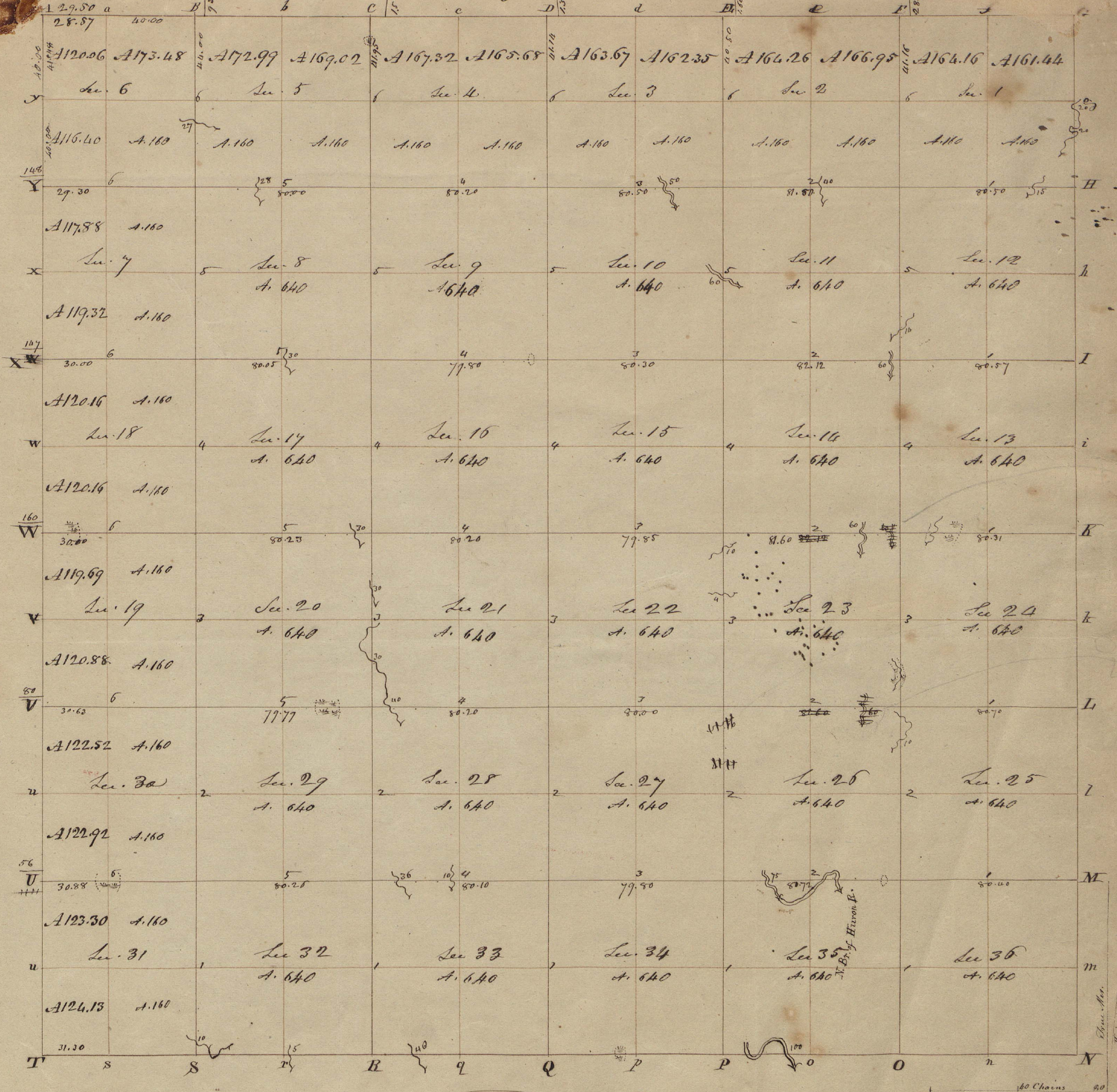


Township N. VI North, Range N. XII East of Mer. (Mich. Ter.)



Surveyor General's Office  
 Feb 20th 1919

4000 Dec  
 Total quantity 22,638.74

A true Copy from the Original on file in this Office

POOR COPY

Edward Tiffin  
 Surveyor General



Township N<sup>o</sup> III North, Range N<sup>o</sup> XIII East of the Meridian. (Mich: Ter.) Surveyed by William Preston. 1817

Description of the Soil on the interior Sectional lines.

Between Sections	Quality &c.	Between Sections	Quality &c.	Between Sections	Quality &c.
35 & 36	2 <sup>nd</sup> rate level & dry - W. Oak, Sugar, beech &c. &c.	33 & 34	Good 2 <sup>nd</sup> rate level & part wet timber same	4 & 9	2 <sup>nd</sup> rate level & part dry - W. Oak, Hickory, beech, B. ash, Elm
25 & 36	2 <sup>nd</sup> rate rolling & dry - W. Oak, Spruce, beech, sugar &c. &c.	27 & 34	Same	11 & 5	Good 2 <sup>nd</sup> rate level & dry - W. Oak, beech, sugar, poplar, B. Oak
25 & 26	2 <sup>nd</sup> rate level & dry - W. Oak, beech, sugar, Spruce, B. Oak, &c.	27 & 28	Same	31 & 32	2 <sup>nd</sup> rate part wet
24 & 25	Same	29 & 30	Same	29 & 32	Same
23 & 24	Same	21 & 22	2 <sup>nd</sup> rate level & wet - B. Oak, Elm &c.	26 & 30	Same
13 & 24	Same (part wet)	15 & 22	Mostly 2 <sup>nd</sup> rate level - W. Oak, B. Oak, Spruce, beech, Birch, sugar	20 & 20	Good 2 <sup>nd</sup> rate dry & rolling - W. Oak, Poplar, Beech &c.
13 & 14	Level & mostly wet 2 <sup>nd</sup> rate - W. Oak, Maple, Beech, sugar	15 & 16	First half level & dry 2 <sup>nd</sup> rate - last 1/2 part wet	19 & 20	2 <sup>nd</sup> rate level & dry - W. Oak, beech, poplar, sugar, B. Oak, Spruce &c.
12 & 13	2 <sup>nd</sup> rate level & wet - B. Oak, Elm, Beech, sugar, W. Oak	10 & 15	2 <sup>nd</sup> rate rolling & good - W. Oak, B. Oak, maple &c. &c.	17 & 20	2 <sup>nd</sup> rate level & part dry
11 & 12	Same	9 & 10	2 <sup>nd</sup> rate level & dry - timber same	17 & 18	Wet 2 <sup>nd</sup> rate
1 & 14	2 <sup>nd</sup> rate part dry - timber same	3 & 10	Same	8 & 17	2 <sup>nd</sup> rate level & dry - W. Oak, Beech, Ash
1 & 2	2 <sup>nd</sup> rate level & dry	3 & 11	Same	7 & 8	Same
24 & 25	Same (part wet)	31 & 33	Same	5 & 6	Level & wet 2 <sup>nd</sup> rate
24 & 25	Same	28 & 33	2 <sup>nd</sup> rate level & wet - B. Oak, Maple, beech, Spruce	2 & 6	2 <sup>nd</sup> rate - Beech, W. Oak, sugar, B. Oak, Elm, Spruce
22 & 23	2 <sup>nd</sup> rate level & dry - W. Oak, Beech, B. Oak, sugar, &c. &c.	28 & 29	2 <sup>nd</sup> rate level & dry - W. Oak, B. Oak, W. Oak, Elm, poplar, maple &c. &c.	30 & 31	2 <sup>nd</sup> rate level & wet
14 & 23	Same	21 & 28	Same	19 & 31	Same
14 & 15	Same (part wet)	20 & 21	Level & wet - B. Oak, W. Oak, Elm, Maple	18 & 19	Same first half level & dry
11 & 14	2 <sup>nd</sup> rate level & dry - timber same	16 & 21	Level & part dry - timber same	7 & 18	2 <sup>nd</sup> rate level & wet
10 & 11	Same	16 & 17	2 <sup>nd</sup> rate level & dry - W. Oak, beech, sugar, poplar, B. Oak, maple &c. &c.	6 & 7	Good level & dry 2 <sup>nd</sup> rate - last half wet
2 & 11	Same	9 & 16	Same partly dry		
2 & 3	2 <sup>nd</sup> rate level & wet	8 & 9	2 <sup>nd</sup> rate level & dry - timber same		

Posts	Deaving trees	Inches diam.	Courses they bear	Sinks dist.	Quality of the Soil	Corners of sections	Deaving trees	Inches diam.	Courses they bear	Sinks dist.	From E to	Deaving trees	Inches diam.	Courses they bear	Sinks dist.
A	Ironwood	4	N 10 W 8			25. 26. 35. 36	Maple	30	N 71 E 31		I to X at	1	Elm	18	N 24 W 22
a	do	3	N 75 E 8			23. 24. 25. 26	Poplar	12	N 54 W 15			2	do	18	N 32 E 18
B	Syc	12	N 63 W 8			13. 14. 23. 24	W. Oak	30	S 62 W 5			3	Hickory	10	S 71 E 5
b	Birch	13	S 66 W 13			11. 12. 13. 14	B. Oak	8	N 20 W 6			4	do	21	N 22 W 39
C	B. Oak	7	Corner			1. 2. 11. 12	do	13	N 24 W 5			5	Elm	12	S 26 W 30
c						26. 27. 34. 35	do	4	N 13 W 10			6	Flourish	6	North 7
D	B. Oak	4	Corner			22. 23. 26. 27	B. Oak	4	N 77 W 8			7	Flourish	6	N 58 W 12
d						14. 15. 22. 23	do	3	Corner			8	B. Oak	8	N 7 W 34
E	Ironwood	2	Corner			10. 11. 14. 15	Elm	18	S 63 E 19		H to Y	1	Ironwood	5	N 81 E 10
e						2. 3. 10. 11	B. Oak	5	S 72 W 16			2	W. Oak	18	N 71 W 12
F	Ironwood	6	S 30 W 21			27. 28. 29. 30	Syc	6	S 10 W 18			3	W. Oak	12	N 37 E 18
f	do	6	N 52 W 20			21. 22. 27. 28	Beech	4	N 54 W 17			4	B. Oak	4	S 52 W 24
G	Ironwood	6	N 85 W 18			15. 16. 21. 22	do	2	N 35 W 17			5	do	7	N 81 E 10
g	W. Oak	16	N 29 E 24			9. 10. 15. 16	do	11	N 32 E 17			6	Ironwood	5	N 81 E 10
h	Ironwood	3	Corner			3. 4. 9. 10	Elm	6	N 29 E 6			7	W. Oak	26	North 14
h	do	3	Corner			28. 29. 32. 33	B. Oak	8	N 56 W 31			8	W. Oak	18	N 40 E 22
I	Ironwood	6	S 30 W 21			20. 21. 28. 29	Ironwood	5	S 58 W 13			9	Beech	8	S 13 E 18
i	do	6	N 52 W 20			16. 17. 20. 21	Beech	30	Corner			10	B. Oak	8	S 35 W 18
i	Maple	13	N 23 W 8			8. 9. 16. 17	Maple	20	N 10 W 19			11	Maple	12	S 85 W 20
j	Beech	5	East 7			4. 5. 8. 9	do	18	South 18			12	Maple	18	West 19
k	W. Oak	11	S 58 W 10			29. 30. 31. 32	do	16	N 20 E 13			13	W. Oak	12	N 82 E 24
k	do	14	S 55 E 10			19. 20. 29. 30	Sugar	18	North 14			14	B. Oak	5	N 28 W 8
k	Beech	6	S 81 W 12			17. 18. 19. 20	Ironwood	6	S 88 W 15			15	W. Oak	18	N 29 W 18
l	Syc	4	S 42 E 10			7. 8. 17. 18	B. Oak	7	N 53 E 13			16	Beech	12	S 39 E 14
l	Maple	30	N 48 E 5			5. 6. 7. 8	B. Oak	12	N 78 W 13			17	do	4	Corner
l	Beech	8	N 88 W 11				do	18	S 42 W 20			18	W. Oak	18	S 12 W 11
m	W. Oak	20	S 55 W 42					16	S 64 E 28			19	do	7	Corner
m	Beech	12	S 6 W 46					18	S 74 W 20			20	do	7	Corner
n	Beech	14	East 22					16	S 42 W 20			21	do	7	Corner
n	Sugar	20	N 2 E 25					18	S 74 W 20			22	do	7	Corner
n	Sugar	18	N 20 W 19					18	S 42 W 20			23	do	7	Corner
n	do	16	N 75 E 25					16	S 42 W 20			24	do	7	Corner
o	B. Oak	12	S 46 W 14					18	S 42 W 20			25	do	7	Corner
o	do	4	S 42 E 7					16	S 42 W 20			26	do	7	Corner
o	W. Oak	11	S 73 E 4					18	S 42 W 20			27	do	7	Corner
o	Sassafras	8	N 13 W 13					18	S 42 W 20			28	do	7	Corner
o	Elm	24	N 24 E 17					18	S 42 W 20			29	do	7	Corner
o	Hickory	...	N 38 E 23					18	S 42 W 20			30	do	7	Corner
o	Beech	4	Corner					18	S 42 W 20			31	do	7	Corner
p	Beech	14	N 50 E 10					18	S 42 W 20			32	do	7	Corner
p	do	6	S 59 W 10					18	S 42 W 20			33	do	7	Corner
p	Elm	14	N 43 E 13					18	S 42 W 20			34	do	7	Corner
q	B. Oak	12	N 73 W 21					18	S 42 W 20			35	do	7	Corner
q	Maple	12	N 69 W 16					18	S 42 W 20			36	do	7	Corner
q	Beech	10	S 54 E 16					18	S 42 W 20			37	do	7	Corner
q	Beech	12	S 80 W 9					18	S 42 W 20			38	do	7	Corner
r	Ironwood	6	S 10 W 9					18	S 42 W 20			39	do	7	Corner
r	Syc	18	N 61 E 16					18	S 42 W 20			40	do	7	Corner
r	do	12	N 19 W 17					18	S 42 W 20			41	do	7	Corner
r	B. Oak	16	N 85 W 22					18	S 42 W 20			42	do	7	Corner
r	W. Oak	11	S 10 E 16					18	S 42 W 20			43	do	7	Corner
r	Sugar	13	S 9 W 15					18	S 42 W 20			44	do	7	Corner
r	Beech	4	N 80 E 8					18	S 42 W 20			45	do	7	Corner
r	Elm	13	N 30 E 12					18	S 42 W 20			46	do	7	Corner
r	do	18	S 54 E 18					18	S 42 W 20			47	do	7	Corner
t	W. Oak	5	Corner					18	S 42 W 20			48	do	7	Corner
t								18	S 42 W 20			49	do	7	Corner
t								18	S 42 W 20			50	do	7	Corner
u	Elm	20	N 2 W 23					18	S 42 W 20			51	do	7	Corner
u	do	18	N 73 W 25					18	S 42 W 20			52	do	7	Corner
v	B. Oak	6	Corner					18	S 42 W 20			53	do	7	Corner
v								18	S 42 W 20			54	do	7	Corner
v								18	S 42 W 20			55	do	7	Corner
w	W. Oak	8	S 60 W 26					18	S 42 W 20			56	do	7	Corner
w	B. Oak	8	S 78 E 10					18	S 42 W 20			57	do	7	Corner
w								18	S 42 W 20			58	do	7	Corner
x	B. Oak	5	Corner					18	S 42 W 20			59	do	7	Corner
x								18	S 42 W 20			60	do	7	Corner
x								18	S 42 W 20			61	do	7	Corner
y	Maple	12	N 57 E 19					18	S 42 W 20			62	do	7	Corner
y	Beech	12	S 51 E 13					18	S 42 W 20			63	do	7	Corner
y								18	S 42 W 20			64	do	7	Corner

Interior Quarter Section corners described

From E to	Deaving trees	Inches diam.	Courses they bear	Sinks dist.	R to C
M to U at	Ironwood	3	Corner		
	do	20	S 42 E 12		
	Ironwood	4	N 89 W 12		
	Beech		Corner		
	W. Oak	24	S 11 E 6		
	Beech	12	N 77 W 22		
	Maple	18	S 80 W 16		
	Elm	7	N 23 W 19		
	B. Oak	5	Corner		
I to V	B. Oak	10	Corner		
	do				
	Elm	38	S 53 W 9		
	do	5	N 34 W 17		
	Beech	10	Corner		
	do				
	Beech	12	N 88 W 7		
	do	7	N 76 E 7		
	Beech	18	N 43 W 20		
	do	20	S 79 E 21		
R to W	Maple	18	S 71 E 7		
	Beech	6	N 51 E 7		
	Sugar	15	S 13 W 6		
	Maple	20	N 41 E 7		
	Poplar	30	N 19 W 20		
	Beech	10	S 66 W 16		
	do				
	Beech	18	S 78 E 8		
	Beech	8	S 42 E 6		
	B. Oak	8	S 38 W 23		
	Beech	6	N 61 W 14		