

Township N. IV North, Range N. XIV East of the Mer. (Mich. Ter.)

A true Copy from the Original on file in this Office

Surveyor General's Office

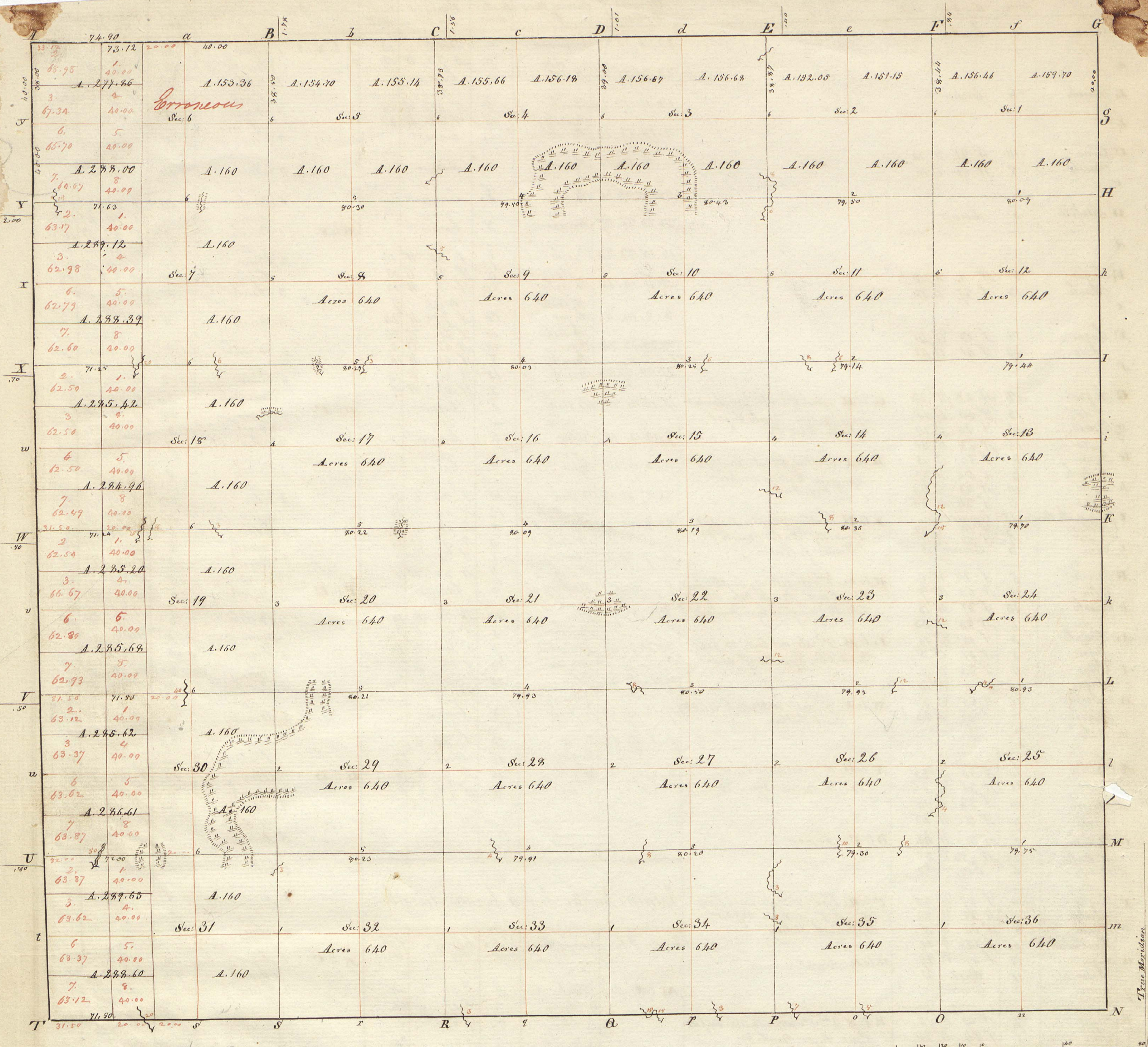
February 20, 1818

Acres Due

Total quantity 24,512, 82

Edward Tiffin
Surveyor General

POOR COPY



Township N^o IV North, Range N^o XIV East of the Meridian. (Mich: Ter.) Surveyed by William Preston. 1817.

Description of the Soil on the interior Sectional lines.

Between Sections	Quality &c.	Between Sections	Quality &c.	Between Sections	Quality &c.
35 & 36	1 st 2 nd rate dry last 1/2 wet 3 rd rate 10 Oak, beech, Br. Ash, Maple, Elm	33 & 34	Level & dry good 2 nd rate 10 Oak, 10 Ash, Beech, Sugar, 10 Maple, Spruce	3 & 4	1 st 1/2 level 2 nd rate last 1/2 part 2 nd rate dry timber same
25 & 26	Level & dry 2 nd rate 10 Oak, Beech, maple, last 1/2 dry Ash, Elm, Ironwood	27 & 28	Same	31 & 32	Level & dry 2 nd rate 10 Oak, 10 Ash, Beech, Sugar, 10 Maple, Spruce
25 & 26	Level & dry 2 nd rate 10 Oak, Beech, maple, last 1/2 dry Ash, Elm, Ironwood	27 & 28	Same	29 & 30	Level 2 nd rate part wet part dry 10 Oak, Beech, Maple, Spruce
24 & 25	Level & dry 2 nd rate Beech, Oak, Br. Ash, Spruce	22 & 23	Same	29 & 30	1 st 1/2 part marshy last 1/2 level & dry 2 nd rate timber same with sugar
23 & 24	Same	21 & 22	1 st 1/2 part dry 2 nd rate last 1/2 marshy 10 Oak, 10 Ash, Beech, Sugar	20 & 21	Level & dry good 2 nd rate timber same
13 & 14	Same	15 & 16	Level & dry 2 nd rate 10 Oak, 10 Ash, Beech, Sugar, 10 Maple, Spruce	10 & 11	Same
13 & 14	Same	15 & 16	Br. Ash, Spruce	17 & 18	Same
12 & 13	Same	10 & 11	Level & part wet - timber same	18 & 19	Level & dry good 2 nd rate timber same
11 & 12	Same	9 & 10	Same	5 & 6	Level & mostly dry good 2 nd rate timber same
1 & 2	3 rd rate level & part wet timber same	3 & 4	Level & mostly dry except swamp 10 Oak, Sugar, 10 Br. Ash	5 & 6	Same
1 & 2	2 nd rate wet 10 Oak, Beech, Elm, Spruce	3 & 4	1 st 1/2 wet 2 nd rate last 1/2 dry good 2 nd rate timber same	5 & 6	Same
24 & 25	2 nd rate level & dry	22 & 23	2 nd rate level & dry 10 Oak, Br. Ash, Beech	5 & 6	Same
26 & 27	2 nd rate 10 Oak, Beech, Maple, Ironwood	28 & 29	Level & part wet 2 nd rate	30 & 31	1 st 1/2 wet 2 nd rate bal. rolling good 2 nd rate 10 Oak, Sugar, 10 Maple, Spruce
26 & 27	2 nd rate level & dry - timber same	21 & 22	Level & part wet 2 nd rate 10 Oak, Maple, Elm	10 & 11	Same
23 & 24	2 nd rate level & part wet	20 & 21	1 st 1/2 level level & dry good 2 nd rate last 1/2 level & mostly dry 2 nd rate	18 & 19	Level & dry 2 nd rate timber same
22 & 23	2 nd rate level & dry - timber as above	16 & 17	Timber 10 Oak, Br. Ash, maple, Beech, Sugar, 10 Maple, Spruce, Ironwood, Beech, Elm	16 & 17	Same
14 & 15	Same - last half 3 rd rate wet	16 & 17	2 nd rate level part wet part dry 10 Oak, Beech, Sugar, Br. Ash, 10 Ash	9 & 10	Level & part wet part dry 2 nd rate timber same
14 & 15	Same	9 & 10	Level & dry good 2 nd rate - timber same	8 & 9	Level & part wet part dry 2 nd rate timber same
10 & 11	2 nd rate level & dry 10 Oak, Beech, Br. Ash, Spruce, Sugar, 10 Maple	8 & 9	Level good 2 nd rate 10 Oak, Beech, Sugar, 10 Maple, Spruce		

Summary of trees 2016

	diam.	they bear	dist.	Section 5	Bearing trees	Inches diam.	Courses they bear	Inches dist.	Section 6	Bearing trees	Inches diam.	Courses they bear	Inches dist.	
A	24	South	14	25. 26. 35. 36	Beech	6	S 37 E 11		I to X at 1	Sugar	10	S 19 1/2 W 28		
a	14	S 64 W 24			do	5	S 69 W 10			B. Ash	13	S 66 W 29		
B	16	N 55 E 8		23. 24. 25. 26	B. Ash	12	S 9 W 8		2	Beech	9	S 52 E 31		
b	12	S 83 E 18			Lynn	7	S 67 E 18			do	10	S 2 W 11		
c				13. 14. 23. 24	W. Oak	24	S 36 W 8		3	Pure Oak	36	Corner		
d					Lynn	8	S 58 E 22		4	Beech	7	Corner		
e				11. 12. 13. 14	Sugar	15	East 21			do				
f					Beech	6	S 25 1/2 W 5		5	Elm	5	Corner		
g				1. 2. 11. 12	Beech	14	S 54 W 20			do				
h					Elm	17	S 65 W 29		6	B. Ash	16	S 30 W 25		
i				26. 27. 34. 35	W. Oak	18	Corner			Hickory	12	S 24 W 10		
D	10	Corner							H to Y	1	Beech	10	S 4 E 20	
d				23. 23. 26. 27	B. Ash	4	Corner			2	Sugar	12	S 88 W 0	
E	13	S 65 1/2 E 10		11. 15. 22. 23	Beech	4	Corner			3	B. Ash	6	Corner	
e	40	West 24								4	Ironwood	4	Corner	
F	7	S 26 E 19		10. 11. 14. 15	W. Oak	30	Corner			5	Beech	12	Corner	
f	5	S 46 W 39								6	Ironwood	4	Corner	
G	16	S 46 W 35		2. 3. 10. 11	Beech	20	S 21 1/2 E 20			7	B. Ash	12	Corner	
g	18	S 36 E 26			Birch	14	S 65 W 29			8	Ironwood	6	Corner	
h	3	Corner		27. 28. 33. 34	W. Oak	8	Corner			9	Ironwood	6	Corner	
I	10	S 47 E 12		21. 22. 27. 28	B. Ash	10	S 77 W 8			10	Maple	24	S 71 E 18	
i	8	South 24			do	8	S 77 E 17			11	Beech	10	S 88 W 27	
J	8	Corner		15. 16. 21. 22	Elm	12	West 7		O to F	1	Beech	6	S 30 W 14	
K	8	Corner			W. Oak	5	North 12			2	do	11	S 50 W 18	
L	10	S 21 E 8		9. 10. 15. 16	Elm	24	S 15 E 18			3	Hornbeam	2	Corner	
l	6	S 52 W 10			Lynn	12	S 15 W 13			4	Ironwood	4	Corner	
m	20	S 66 1/2 W 20		3. 4. 9. 10	B. Ash	6	Corner			5	Beech	3	Corner	
M	5	S 13 E 9		25. 29. 32. 33	Beech	12	East 7			6	Beech	2	Corner	
M	12	S 63 W 5			do	8	S 8 W 7			7	W. Oak	10	S 70 W 8	
m	10	S 15 E 9		20. 21. 28. 29	B. Ash	8	West 24			8	Elm	12	S 85 W 22	
n	10	South 21			do	8	S 80 W 23			9	Beech	6	Corner	
N	5	Corner		14. 17. 20. 21	W. Oak	3	Corner			10	Beech	2	Corner	
o	18	S 67 W 26		8. 9. 16. 17	B. Ash	7	Corner		P to E	1	Beech	2	Corner	
O	22	S 20 W 16								2	Maple	14	S 45 W 15	
u	4	Corner		4. 5. 8. 9	Beech	14	S 80 E 21			3	Beech	7	S 38 E 22 1/2	
M	16	S 49 W 14		29. 30. 31. 32	Sugar	18	S 60 E 19			4	W. Oak	10	S 71 E 10	
m	6	S 87 E 8			do	5	Corner			5	B. Ash	10	S 75 W 14	
n	8	S 29 W 8		19. 20. 29. 30	Lynn	21	S 36 E 23			6	Sugar	5	S 84 1/2 E 14	
N	20	S 89 1/2 E 11			B. Ash	8	East 7			7	W. Oak	5	Corner	
o	not	not		17. 18. 19. 20	W. Oak	36	S 11 W 13			8	B. Ash	20	S 13 W 24	
u	30	S 79 W 12		7. 8. 17. 18	Sugar	18	S 35 W 9			9	Beech	13	S 75 E 20	
O	8	S 48 1/2 E 10		5. 6. 7. 8	B. Ash	10	Corner			10	Hickory	14	S 34 W 20	
o	5	Corner								11	W. Oak	30	S 35 E 19	
p	16	S 49 E 11								12	W. Oak	12	S 15 W 21	
P	14	S 84 W 19								13	W. Oak	7	S 73 E 21	
p	5	S 40 E 12								14	Maple	Corner		
P	12	S 11 E 10								15	Elm	14	North 15	
q	13	S 41 E 20								16	do	12	S 10 W 18	
Q	30	S 11 E 12								17	Beech	6	S 76 E 18	
q	7	S 68 W 21								18	do	7	S 47 W 33	
R	30	S 17 E 27 1/2								19	Sugar	18	S 39 E 31	
r	14	S 35 W 5								20	Beech	12	North 30	
x	22	West 22								21	do	20	S 16 E 14	
S	11	S 84 1/2 E 23								22	do	14	S 9 W 7	
s	7	S 42 1/2 E 15								23	B. Ash	8	S 45 E 12	
S	32	S 52 W 13								24	B. Ash	6	S 15 W 17	
s	6	S 31 E 9								25	Pure Oak	30	S 20 E 8	
T	5	S 18 W 13								26	W. Oak	7	S 8 W 8	
t	16	S 29 E 29								27	Beech	18	S 81 W 13	
u	6	S 85 W 18								28	Sugar	12	S 13 E 22	
U	12	S 7 W 10								29	Hickory	4	Corner	
u	40	S 42 E 39								30	do	4	Corner	
v										31	W. Oak	7	S 8 W 8	
V	6	Corner								32	Beech	18	S 81 W 13	
w										33	Sugar	12	S 13 E 22	
W	4	Corner								34	Hickory	4	Corner	
w										35	do	4	Corner	
X	10	Corner								36	W. Oak	8	S 14 E 15	
x										37	Sugar	18	S 28 W 17	
Y	18	S 46 W 8								38	Sugar	18	S 48 1/2 E 23	
y	24	S 76 E 13								39	Beech	8	S 32 E 20	
Y										40	do	10	East 25	

Interior Quarter Section corners described

From	To	Bearing trees	Inches diam.	Courses they bear	Inches dist.
M to U at 1	Peplar		36	Corner	
	2	Beech	7	Corner	
	3	Beech	10	Corner	
	4	Lynn	14	S 16 W 39	
	5	Sugar	16	S 5 1/2 E 49	
	6	W. Oak	4	Corner	
	7	W. Oak	18	S 81 E 12	
	8	Maple	8	S 6 E 14	
L to V	1	Beech	6	S 38 W 17	
	2	do	14	S 15 E 4	
	3	W. Oak	3	Corner	
	4	Ironwood		Corner	
	5	W. Oak	4	Corner	
	6	Beech	18	S 52 E 19	
	7	do	20	S 53 1/2 W 23	
	8	B. Ash	4	Corner	
R to W	1	Beech	13	S 21 E 12	
	2	do	8	S 54 E 16	
	3	W. Oak	40	East 9	
	4	Beech	6	S 37 E 7	
	5	Beech	6	Corner	
	6	Maple	10	Corner	
	7	Beech	6	Corner	
	8	Lynn	14	S 01 W 27	
	9	Hickory	18	S 55 E 28	