

Township N.° 1 North, Range N.° XII East of Mer. (Mich. Ter.)

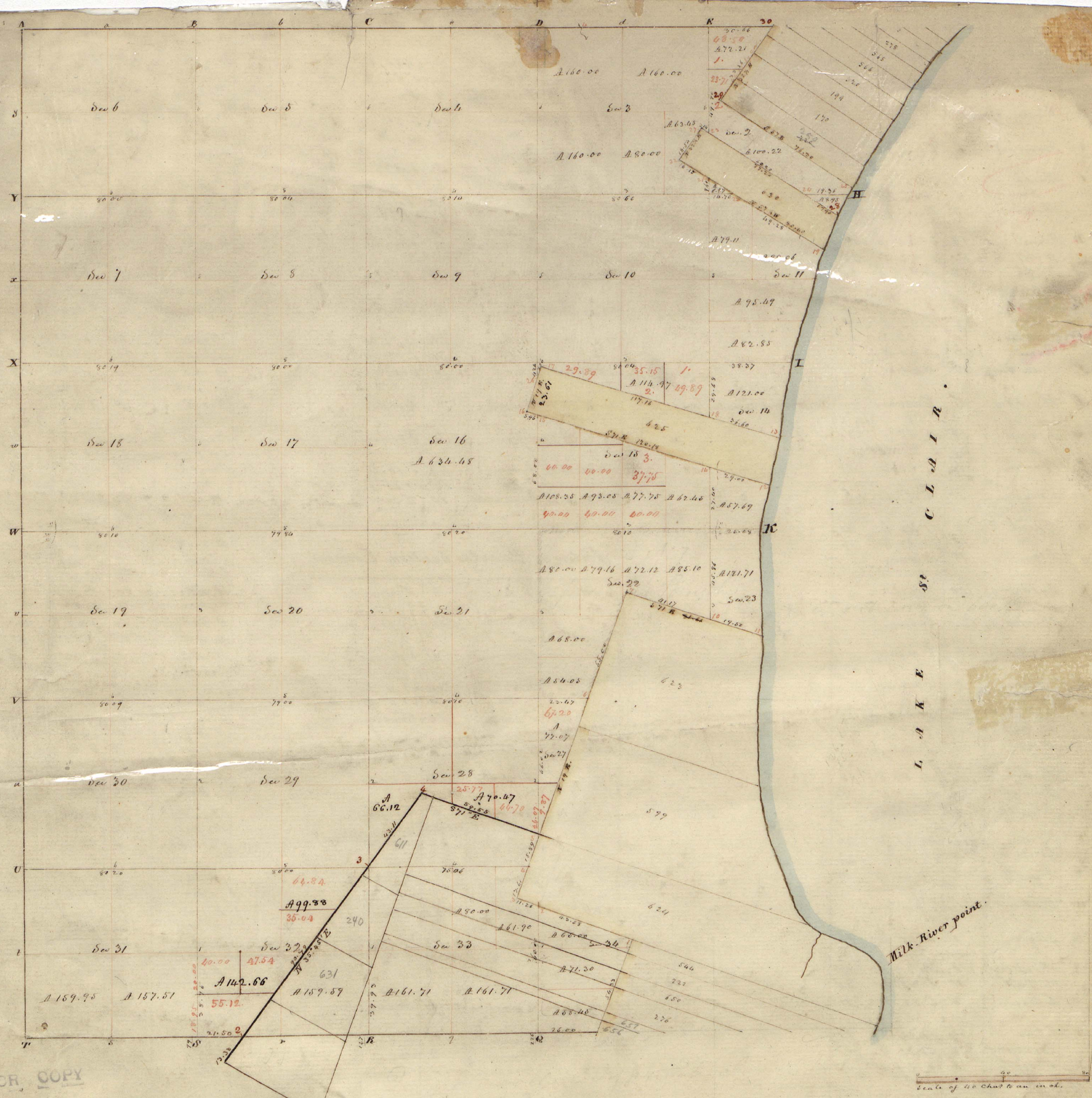


A True Copy from the Original on file in this Office

Surveyor General's Office
 Feb 20 - 1844

Edward Tiffin
 Surveyor General

HOOR COPY



FOUR COPY

Township N: 1 North . Range N: XIII East of Mer. (Mich. Ter)

Surveyed by Wm Preston . 1817

Description of the soil &c on the interior sectional lines .

Between Sections	Quality &c	Between Sections	Quality &c
5.6	2 nd rate part wet, W. Oak, Beech, Elm, Sycam	4.9	2 nd rate level & dry; W. Oak, Beech, Sugar, Elm, Sycam
6.7	3 rd rate, level & wet; B. Ash, Beech, Elm	3.14	Same
7.8	2 nd rate, part dry; B. Ash, Beech, Sugar, Sycam	9.10	Same
7.18	Same	9.16	Same
17.18	2 nd rate, good, level & dry; W. Oak, Poplar, Sugar, Elm	15.16	2 nd rate level, wet; B. Ash, Beech, Elm, Sycam
18.19	Same	16.21	2 nd rate part dry; timber Same
19.20	Same	21.22	2 nd rate; W. Oak, Poplar, Beech, Sugar, Sycam
29.30	Same	21.28	Same
30.31	Same	27.28	Same
31.32	Same	28.33	Same (part wet)
4.5	Same	33.34	Same
5.8	3 rd rate level & wet; B. Ash, Beech, Elm &c	2.3	Same
8.9	3 rd rate 1/2 mile, east & part dry 2 nd rate; B. Ash, Beech	2.11	Same
16.17	Same	10.11	Good 2 nd rate; W. Oak, Beech, Sugar, Wg. Spice
17.20	Same	14.15	2 nd rate part dry; Beech, Elm &c
20.21	Same	14.23	3 rd rate wet & brushy
20.29	Same	10.15	2 nd rate part wet; Beech, Elm &c
28.29	2 nd rate part dry; Sycam, B. Ash, Elm &c	11.14	Same
29.32	2 nd rate level & dry; W. Oak, Poplar, Beech, Sugar, Sycam		
31.33	2 nd rate level, part wet; Beech, Beech, Elm, Sycam		

