

Township N.° II North, Range N.° XIII East of Mer. (Mich. Ter.)

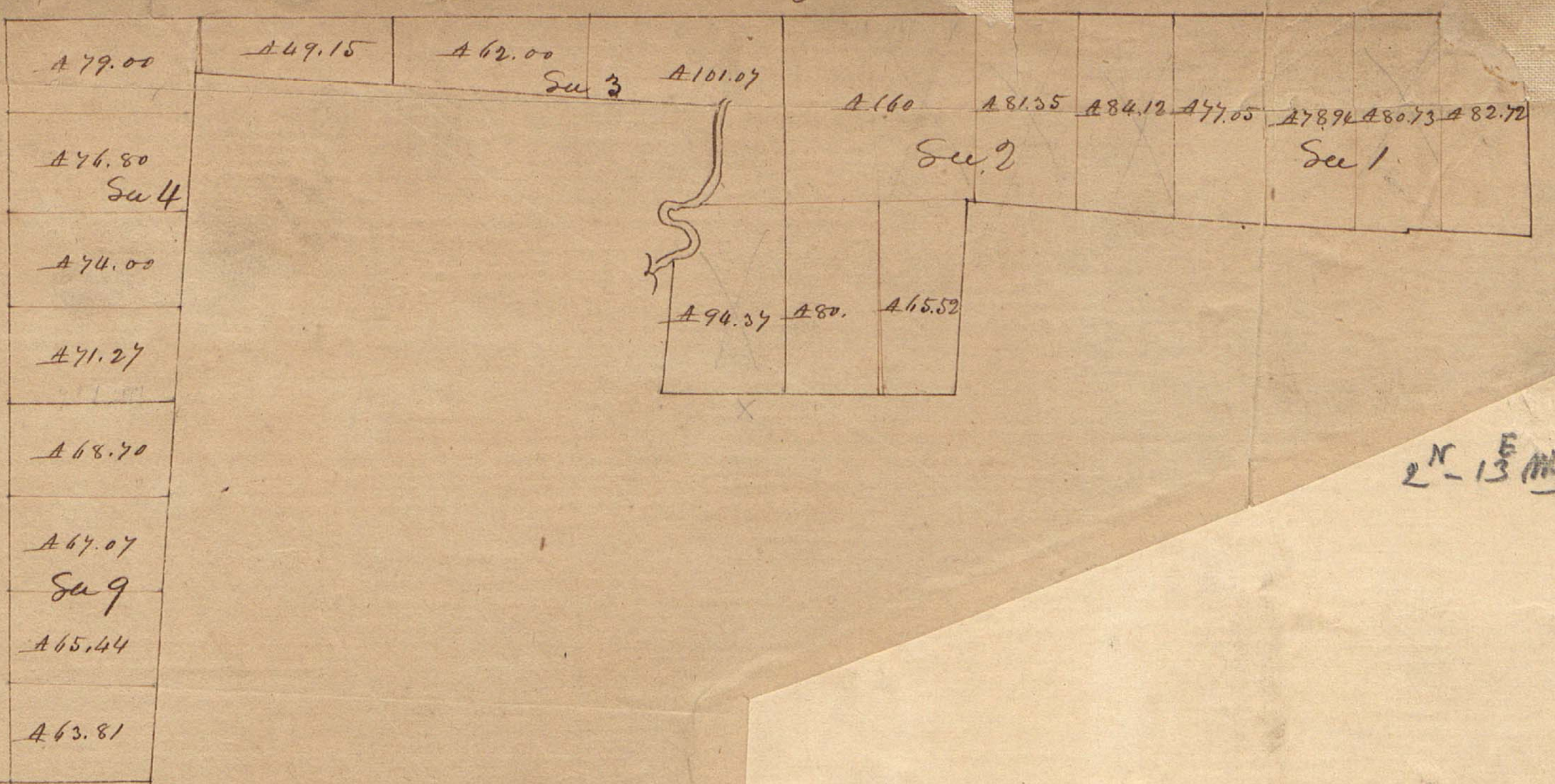


A true Copy from the Original on file in the Office Acad. Dec
 Quantity exclusive of private claims ————— 14, 202, 99
 Surveyor General's Office }
 Feb 20th 1818 }
 Edward Tiffin
 Surveyor General

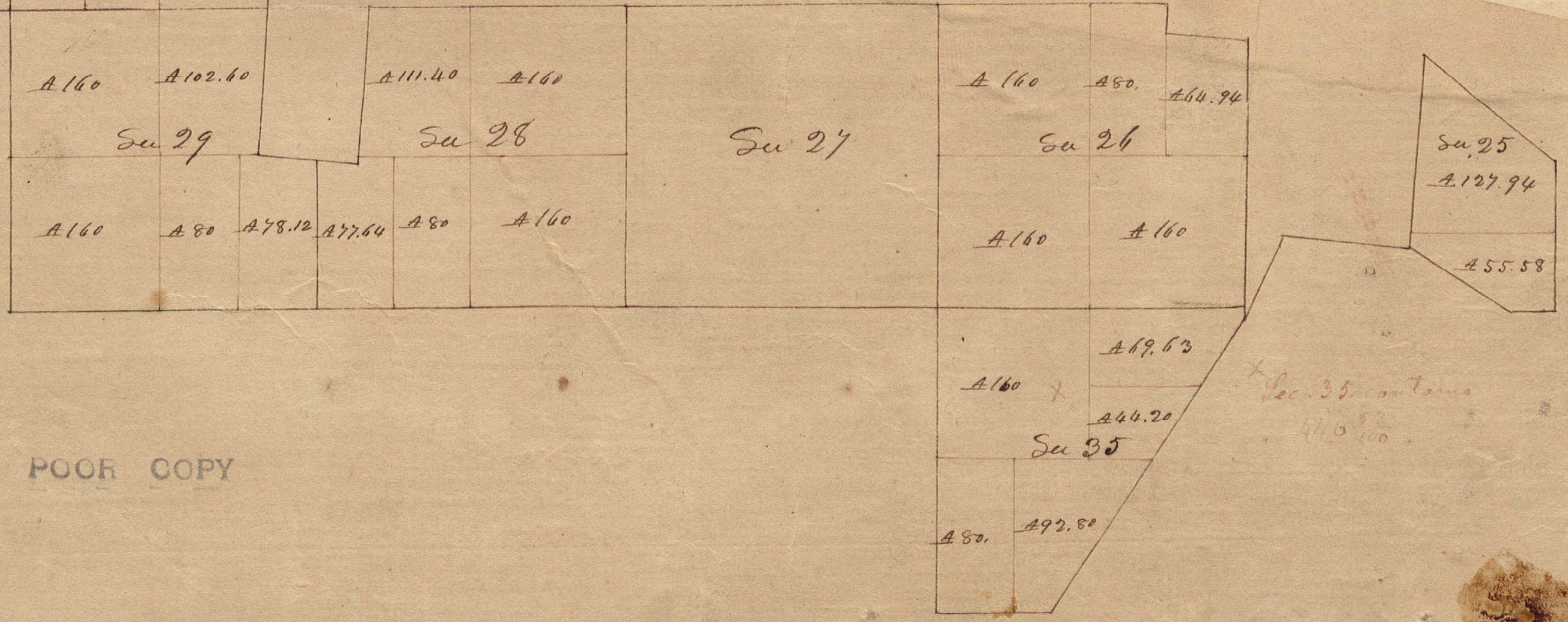
POOR COPY

167026710 N. 2 N, Rang

2 N 13 E 1000

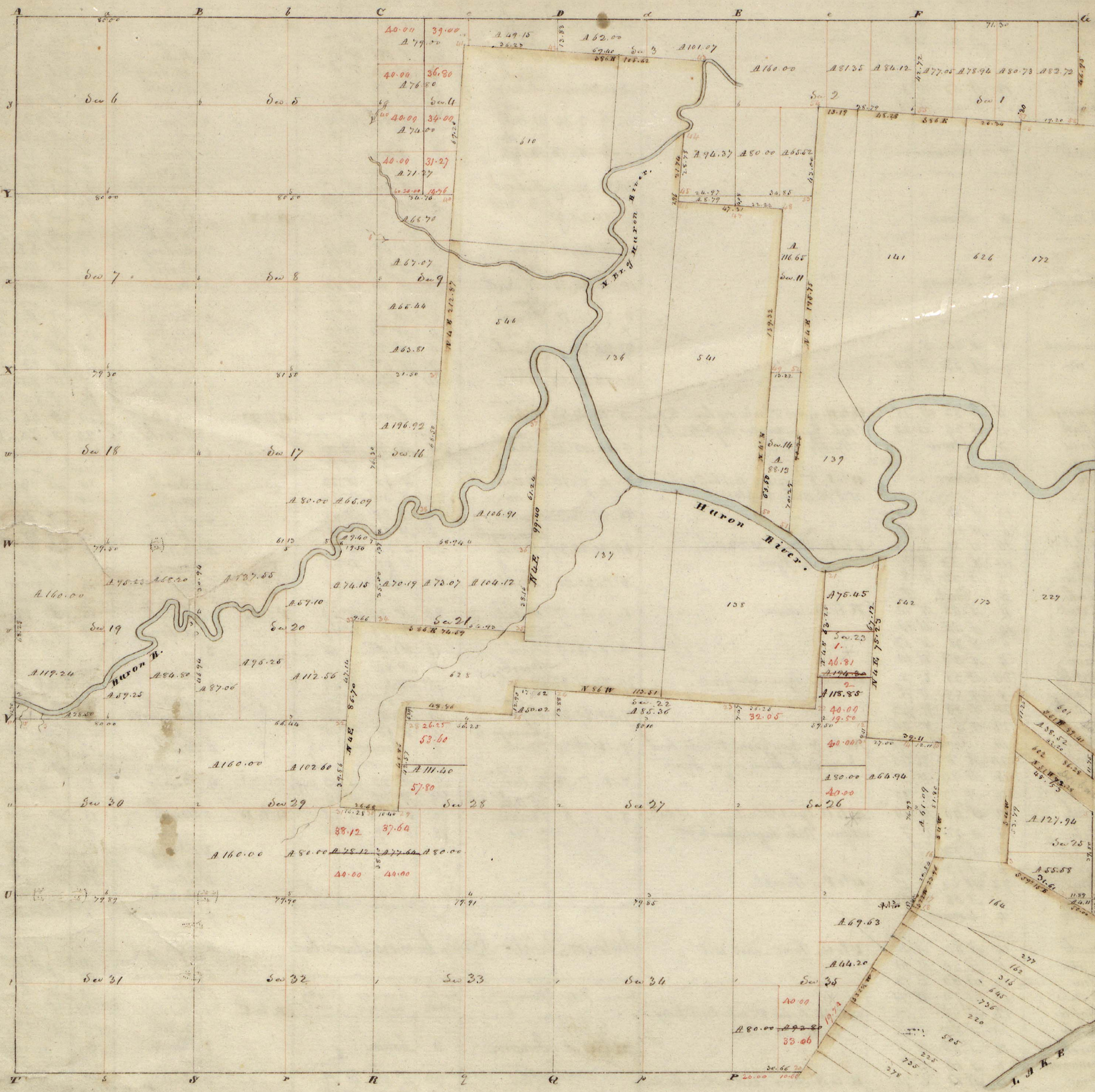


2 N 13 E 1000



POOR COPY

+ Sec. 35 contains 410 1/100



Township N: II North , Range N: XIII East of Mer. (Mich. Ter.)

Surveyed by Wm. Preston, 1817

Description of the soil on the interior sectional lines

Between Sections	Quality &c	Between Section	Quality &c
5. 6	Stk dry & rolling, sh. wt. - W Oak, B. Ash, Lym. Spin. &c	29. 30	Level & dry 2. rate - W Oak, Buck, Suga
6. 7	Level & wet 2. rate. B. Ash, Buck, Elm, Lym.	19. 30	Same
7. 8	Same - (part dry)	19. 20	S of the River same
7. 18	Same	32. 33	1/2 same - part 1/2 with 3. rate. W Oak, Poplar, Ash, Elm.
17. 18	Mostly dry 2. rate. W Oak, Buck, Suga, Lym. Elm, Ash, Poplar	29. 32	Level, part dry W Oak, Buck, B. Ash, Lym. & Spin
18. 19	Same	28. 29	2. rate W & B Oak
19. 20	Excellent 2. rate, level & dry - W Oak, Buck, B. Ash, Suga, Lym.	20. 21	Same
4. 5	Dry 2. rate Buck Suga, Lym.	16. 21	Same
5. 8	Same	20. 29	Same
8. 9	Same - (1/2 wet)	23. 30	Same with Buck, Suga, Poplar - good land
8. 17	Level & wet 2. rate - B. Ash, Elm, Lym.	28. 33	Same
16. 17	1/2 wet 2. rate - Sh. dry very good - W Oak, Buck, Suga.	27. 28	Same
17. 20	Level good 2. rate. W Oak, Buck, Suga, Lym. Spin.	21. 22	Same
3. 6	Dry 2. rate - Buck, W Oak, Ash, Suga	54. 25	Same
4. 9	Same	37. 34	Same
2. 3	Same	26. 27	Same
3. 10	Level & swampy 3. rate - Sam. w. B. Ash, Elm.	22. 27	Same
10. 11	Same	22. 23	Same
2. 11	Level dry 2. rate - W Oak, Buck, Suga	23. 26	Same
		26. 33	Same

	any one diam.	my bear	cut	Quality of the Soil.
A	W Oak	5	Corner	
a	B Ash	3	Corner	
B	Cluster of Maple	Corner		
b	Ironwood	5	Corner	
C	Beech	18	S 65 E	7
	Do	6	N 55 W	20
c	Hornbeam	3	Corner	
D	Elm	18	S 46 W	38
	W Ash	20	S 83 E	27
d	W Ash	12	N 17 W	26
	Hornbeam	6	E ast	9
e	Beech	9	S	16
	Do	20	S 43 W	9
e	Ironwood	10	S 43 E	11
	Elm	22	N 80 W	40
F	W Oak	16	Corner	
J	Hickory	4	Corner	
M	Lynn	18	N 65 E	30
	Do	20	S 77 W	32
P	Beech	11	N 53 E	17
p	Beech	10	Corner	
Q	Beech	8	N 45 W	11
	Do	18	N 41 E	16
q	Elm	18	Corner	
K	Sycamore	40	Corner	
r	Hickory	7	Corner	
s	Hornbeam	3	Corner	
s	Willow	8	Corner	
T	Lynn	12	S 11 W	19
	W Oak	36	N 31 W	41
t	Post	in	Swamp	
U	B Ash	15	N 30 E	15
	Beech	5	S 40 W	14
u	Small Beech	Corner		
V	Lynn	14	N 87 W	29
	W Oak	6	North	32
v	Lynn	8	N 65 W	10
W	Post	in	Swamp, no tree	
w	Sugar	6	S 75 W	14
X	Hickory	10	N 39 W	10
	B Oak	11	S 28 W	20
x	Elm	8	S 32 W	11
Y	Elm	14	N 12 E	17
	Hickory	8	N 71 W	17
y	Poplar	5	S 30 W	13

Dr. H. Wet 3 rate land

Sections	Planting	diam	dir	dist
5. 6. 7. 8	Lynn	6	N 74 E	8
	Maple	26	S 54 E	19
7. 8. 17. 18	Hornbeam	3	Corner	
17. 18. 19. 20	Beech	6	S 81 W	22
	Do	7	N oak	26
4. 5. 8. 9	Lynn	6	S 76 W	16
	Beech	8	S 82 W	26
8. 9. 16. 17	B. Ash	8	N 41 E	18
	Lynn	12	North	9
2. 3. 10. 11	Elm	11	N 30 E	9
	B. Ash	13	S 32 E	18
29. 30. 31. 32	Hornbeam	6	Corner	
19. 20. 29. 30	W Oak	18	Corner	
28. 29. 32. 33	Ironwood	6	Corner	
16. 17. 20. 21	Sugar	24	N 71 W	41
	W Oak	30	S 72 W	61
27. 28. 33. 34	Beech	16	Corner	
21. 22. 27. 28	Beech	6	Corner	
24. 35. 26. 27	Lynn	18	Corner	
22. 23. 26. 27	Lynn	18	S 16 E	12
	Do	12	N 35 E	17
25. 26. 35. 36	Ironwood	10	Corner	

Anterior Quarter Section Corners.

M & V	2	W Oak	8	Corner	
	3	Beech	10	Corner	
	4	Ironwood	6	Corner	
	5	Beech	24	N 6 E	41
		Do	8	N 6 E	41
	6	Lynn	18	Corner	
L & V	2	W Oak	8	Corner	
	3	Hickory	14	Corner	
	4	Hornbeam	6	Corner	
	5	Sassafras	32	Corner	
	6	Elm	6	Corner	
K & W	4	Dogwood	7	Corner	
	5	Lynn	12	N 41 W	14
		Beech	8	S 84 W	26
	6	Swp. Oak	12	N 8 W	10
		Maple	7	S 20 E	8
L & X	5	W Oak	8	Corner	
	6	Lynn	18	S 46 E	18
		Elm	8	N 88 E	10
H & Y	5	Ironwood	5	Corner	
	6	Hickory	7	S 42 E	17
		Elm	20	N 15 E	30
O & F	2	Ironwood	8	North	30
		Sugar	24	N 5 E	21
	6	Sugar	8	Corner	
P & E	1	Ironwood	16	Corner	
	2	B. Ash	18	Corner	
	6	Beech	14	S 23 W	22
		Do	8	N 84 E	21
Q & D	1	B. Ash	14	Corner	
	2	B. Ash	6	Corner	
R & C	1	B. Ash	6	Corner	
	4	Birch	6	N 74 W	9
		Elm	12	N 53 E	19
	5	B. Ash	24	N 83 W	12
		Beech	10	N 85 E	11
	6	Beech	3	Corner	
S & B	1	Beech	14	S 63 E	25
		Do	12	S 45 W	18
	2	W Ash	14	N 6 W	23
		Ironwood	10	S 28 W	11
	3	Hickory	18	Corner	
	4	Ironwood	6	S 74 W	14
		Elm	18	N 8 W	25
	5	Lynn	12	N 18 E	9
		Do	14	S 35 W	20

1	B. Ash	18	N 61 W	98
2	Beech	26	N 81 E	25
	Do	36	N 46 E	40
3	Poplar	22	Corner	
4	Beech	12	S 72 W	7
	Do	16	S 77 E	12
5	Lynn	18	Corner	
6	Beech	18	S 85 E	25
	W Oak	36	N 39 W	29
7	No post	set		
8	B. Ash	10	Corner	
9	Beech	14	N 61 E	16
	Sycamore	30	S 38 E	34
10	Butternut	14	Corner	
12	Maple	8	N 57 W	12
	Lynn	28	N 82 W	20
13	B. Ash	14	N 29 E	12
	Birch	7	N 88 E	19
14	Beech	17	Corner	
15	Beech	10	N 60 W	18
	Sugar	7	N 52 E	6
16	Beech	11	N 85 E	11
	Do	16	N 9 E	18
17	Beech	20	N 85 E	17
	Ironwood	12	N 30 W	21
18	B. Ash	12	S 52 E	10
	B. Oak	16	N 70 E	20
19	Maple	10	E ast	60
	Elm	12	N 88 E	80
20	B. Ash	10	N 17 E	4
	Lynn	7	N 52 E	2
21	W Oak	18	N 89 W	28
	B. Oak	16	N 86 E	31
22	W Ash	10	S 73 E	11
	Beech	14	N 51 W	6
23	Hornbeam	7	Corner	
24	B. Oak	36	Corner	
25	Elm	20	S 67 W	27
	W Ash	11	N 34 W	18
26	Beech	14	S 16 E	5
	Sugar	5	S 19 W	22
27	Hickory	8	Corner	
28	W Oak	13	Corner	
29	Beech	12	N 87 E	9
	Poplar	10	S 34 E	13
30	Beech	6	Corner	
31	W Oak	6	N 57 W	8
	Do	3	N 52 W	12
32	W Ash	36	Corner	
33	B. Ash	4	Corner	
34	W Oak	24	S 84 W	14
	Do	30	S 13 W	26
35	Ironwood	5	Corner	
36	W Oak	24	North	41
	Dogwood	8	S 42 W	24
37	B. Oak	8	S 68 E	15
	Sugar	5	S 34 W	11
38	Ash	14	Corner	
39				
40	No bearing tree			
41	Elm	12	N 51 E	20
	Ash	6	S 14 W	9
42	Bearing tree not noted			
43	Maple	10	Corner	
44	Beech	---	Corner	
45	B. Ash	12	N 2 W	10
	Do	12	S 72 E	9
46	No corner	made		
47	Maple	14	N 30 W	45
	Do	18	N 21 E	38
48	Elm	24	N 14 E	20
	Ash	6	S 84 W	14
49	Lynn	24	S 13 E	4
	Elm	14	S 71 E	5
50	Elm	11	Corner	
51	Elm	5	Corner	
52	B. Ash	30	N 16 W	21
	W Ash	10	S 52 W	12
53	Sugar	7	Corner	
54	Beech	6	N 34 W	30
	W Oak	22	N 40 E	50
55	B. Ash	22	N 49 E	22
	W Oak	30	S 30 W	13
56	Elm	22	S 48 W	14
	Lynn	10	N 67 E	9
57	B. Ash	5	Corner	
58				

Corners on Huron River.

1	Beech	10	S 4 E	70
2	Sycamore	30	S 62 E	46
3	Hickory	8	Corner	
4	W Oak	24	N 52 E	67
	B. Ash	18	N 63 W	48
5	Maple	8	Corner	
6	W Ash	7	Corner	
7	Beech	14	N 70 W	19
	Do	10	S 5 E	39
8	Sassafras	12	S 53 W	10
	Elm	16	N 51 W	30