

Township N.° III North, Range N.° XIV East of the Mer. (Mich. Ter.)



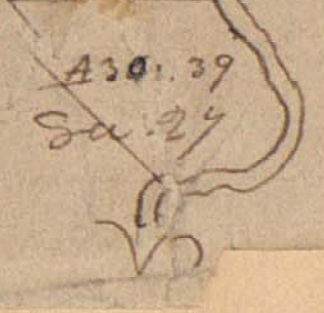
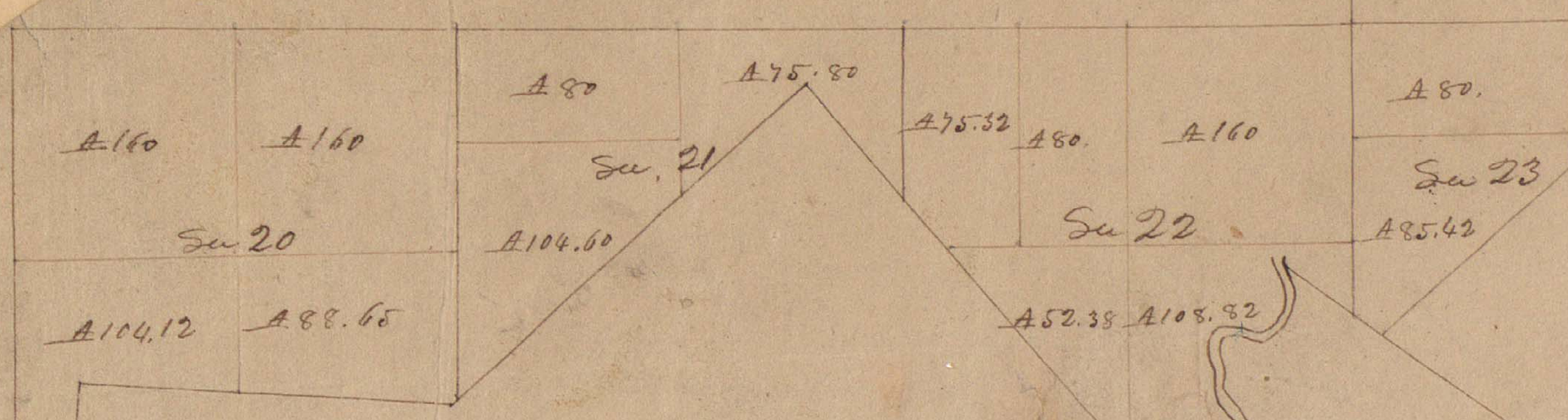
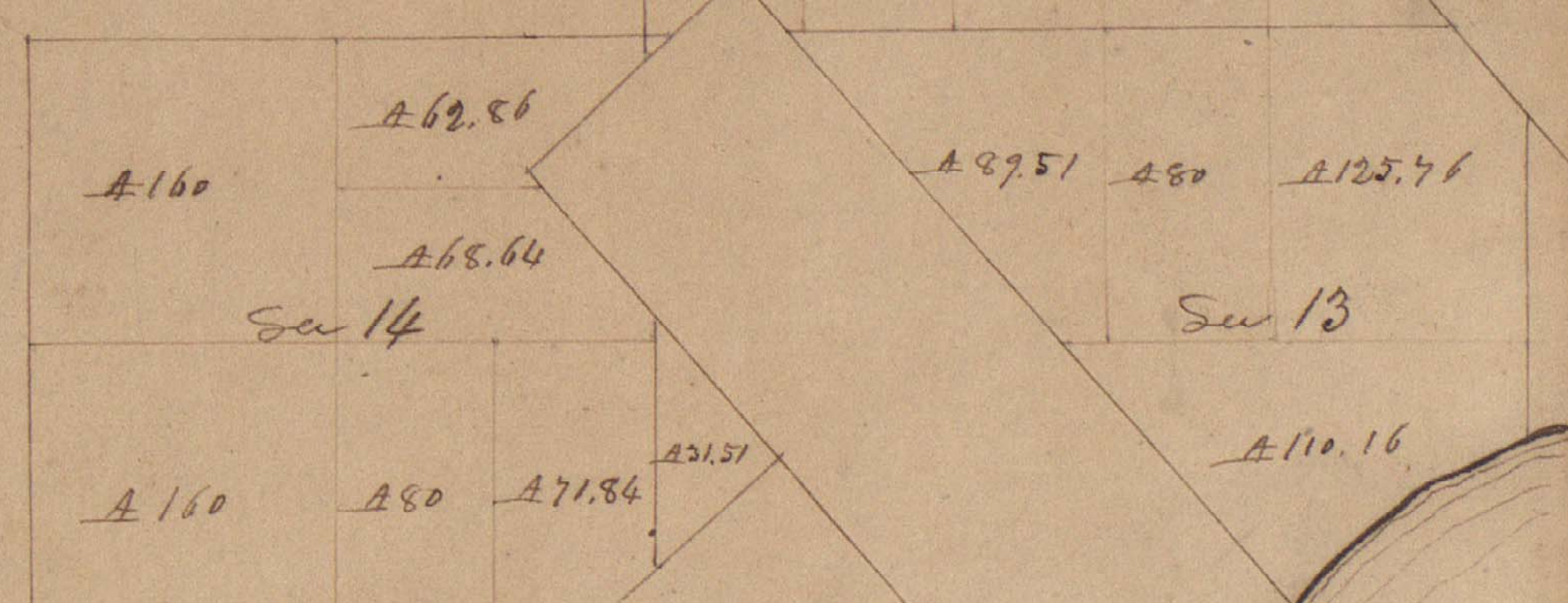
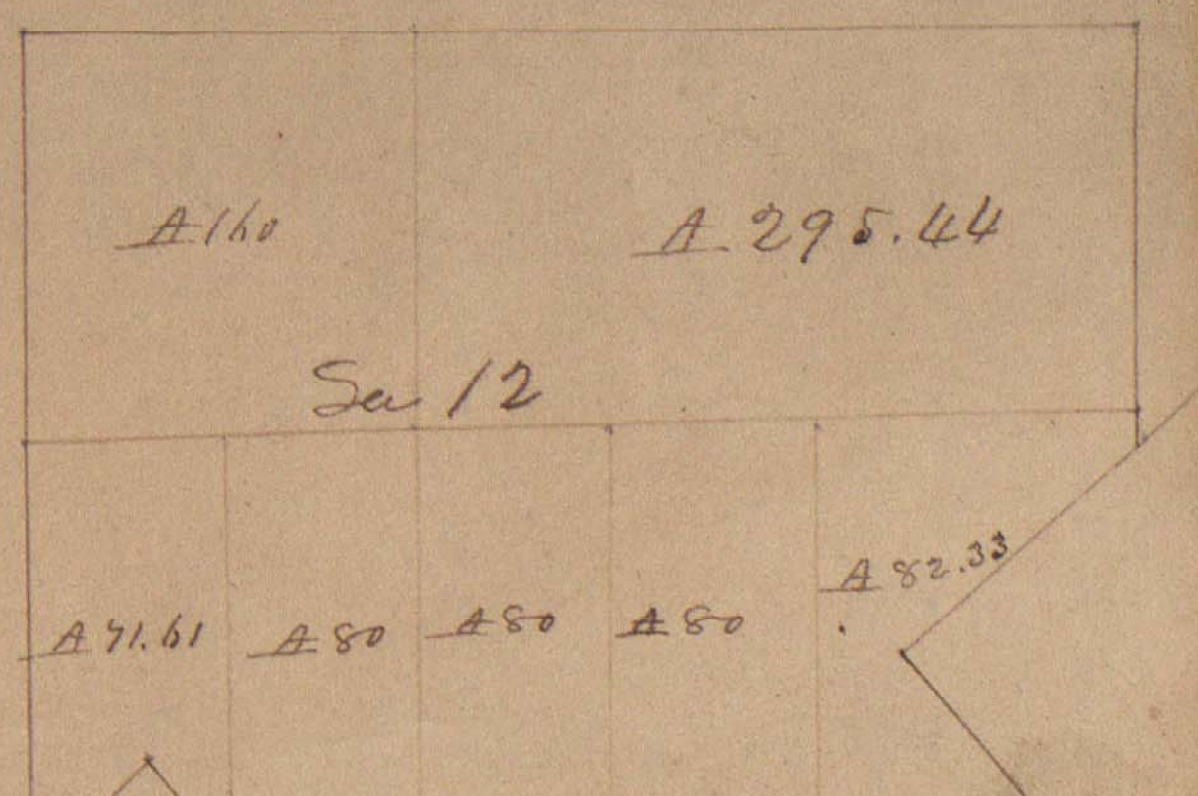
A true Copy from the Original on file in this Office

Surveyor General's Office  
 Feb 20 - 1818.

Edward Tiffin  
 Surveyor General

Township N<sup>o</sup> 3 N, Range N<sup>o</sup> 14 E,

13-14-23-24-25-26-27



Township N<sup>o</sup> 3 N, Range N<sup>o</sup> 14 E. Mer. (Mic.)

Surveyed by J. H. Mullitt  
of 29 June 1837

B Part of 1 3/4 section near Salt Creek of L. St. Clair  
A Do of 1/4 of sec. at mouth of River Old appeared  
antiquary to the preceding - See Grady's Map  
of 24 plates - W. J. S.

Part of this tract is sold to  
M. J. G. Woods, dated May 25 1837  
to be used for the purpose of a school.

Acres of Lake St. Clair.		
31.	S 15 1/4 W	10.00
	S 16 1/4 W	10.00
	S 17 1/4 W	22.00
	S 18 1/4 W	12.00
	S 19 1/4 W	11.50
32.	S 20 1/4 W	18.50
	S 21 1/4 W	16.50
33.	S 22 1/4 W	10.60
River Aux. Vase Rt. Blk. down Stream		
44.	S 15 1/4 W	4.00
	S 16 1/4 W	6.00
	S 17 1/4 W	6.50
	S 18 1/4 W	7.50
36.	S 15 1/4 W	4.00
	S 16 1/4 W	2.50
	to mouth of river.	
Lake St. Clair.		
	S 17 1/4 W	16.50
	S 18 1/4 W	9.00
37.	S 15 1/4 W	2.50

29. 178.05  
25. 30.61  
32. 7.06  
33. 38.07  
253.79



13 - 59.79  
14 - 5.33  
23 - 362.89  
24 - 148.72  
26 - 31.64  
608.32  
53.79  
862.11

POOR COPY

Total number of Acres 862.11

Survey designated	By whom surveyed	Date of Contract	Ant. of Surveys	When surveyed	at	When first settled in the State
Subdivision	J. H. Mullitt	By Instruction	11. 69. 76	4. 4. 1836	1. 4. 1837	

The above Map, of Township N<sup>o</sup> 3 N, of Range N<sup>o</sup> 14 E. Mer., Michigan, is strictly conformable to the field notes of the survey thereof on file in this Office, which have been examined & approved.  
Surveyor General's Office, E. C. B. S. L. the Sur. Genl.  
June 23 1837



POOR COPY

Scale of 40 Chas to an inch.

Township No. III North, Range No. XIV East of Mer. (Mich. Ter.) Surveyed by Wm. Preston. 1817

Description of the soil on the interior sectional lines.

Between Sections	Quality to -	Between Sections	Quality to.
6. 6	1 1/2 mile 2. rate level + dry. last 1/2 2. rate. ant. Birch, Oak, Sugar, Ash, Elm, Spruce	20. 21	2. rate level. part wet. W. Oak, Birch, Sugar, Spruce, Ash, Elm
6. 7	2. rate level part wet. W. Oak, Birch, Sugar, Ash, Elm, Spruce	21. 22	2. rate very wet. Birch, Oak, B. Ash, Elm, Spruce
7. 8	2. rate good, level + dry. timber same	2. 3	2. rate level. part wet. W. Oak, Poplar, Sugar, Birch
7. 18	2. rate part wet. Birch, Ash, Sugar, Elm, Spruce	3. 10	Same - Poplar, B. Ash, Birch
17. 18	2. rate good - W. Oak, Birch, Sugar, Spruce, Iron woods	10. 11	2. rate mostly dry. Birch, Sugar, W. Oak, Poplar
18. 19	Same	10. 15	2. rate level. part dry. W. Oak, Birch, B. Ash, Spruce
19. 20	2. rate 1 1/2 mile wet. last 1/2 good. dry. W. Oak, Birch, Sugar, Spruce, Iron woods	14. 15	2. rate part rolling + dry. W. Oak, Poplar, Birch
19. 20	2. rate good level + dry. W. Oak, Birch, Sugar, Iron woods	15. 22	Same
29. 30	1 1/2 mile 2. rate - last 1/2 2. rate very wet. Birch, Birch, Ash, Elm	22. 23	Same
30. 31	2. rate level + part wet. Birch, Ash, Maple, Birch	16. 23	Same
31. 32	Same	1. 2	1 1/2 mile same - last 1/2 wet
4. 5	2. rate good, level + dry. W. Oak, Birch, Sugar, Spruce	2. 11	2. rate part dry. W. Oak, Birch, Poplar, Spruce
5. 8	2. rate W. Oak, Birch, Sugar, Spruce, Spruce	11. 12	2. rate level. part wet. W. Oak, Birch, Birch, B. Ash
5. 9	2. rate part wet. W. Oak, Birch, Sugar, Spruce, Iron woods	11. 14	2. rate part rolling + dry. W. Oak, Birch, B. Ash, Elm
8. 17	2. rate part wet. Birch, Sugar, Elm, B. Ash + Spruce	1. 12	2. rate level. part wet. W. Oak, Birch, Sugar, Elm, Spruce
16. 17	2. rate mostly dry. Birch, W. Oak, Birch, Sugar, Elm, Spruce	12. 13	2. rate part rolling + dry. W. Oak, Birch, Sugar, Elm, B. Ash, Spruce
17. 20	2. rate level part. B. Ash, Birch, Birch		
20. 21	Same		
30. 4	2. rate good, level + dry. last 1/2 part wet. W. Oak, Birch, Ash, Elm		
4. 7	2. rate good. W. Oak, Birch, Sugar, Spruce, + Spruce		
7. 17	2. rate good. W. Oak, Birch, Sugar, Spruce, + Spruce		

Dist	Bearing tree	Inches diam	Cours they bear	Length	Quality of the Soil	Cours of Section	Bearing tree	Inches diam	Cours they bear	Length	From & to	Bearing tree	Inches diam	Cours they bear	Length
A	W Oak	16	N 29 E	29		5.6.7.8	B Ash	16	S 35 E	8	M&U 5				
	Iron wood	6	N 85 W	18			Maple	16	N 67 E	14					
a	Service	4	Corner			7.8.17.18	W Oak	18	N 32 E	21		Maple	14	Corner	
							Iron wood	6	N 60 W	20					
B	W Oak	18	S 17 W	13		17.18.19.20	Birch	6	N 52 E	17	L&V 5				
	Iron wood	6	N 85 W	4			B Ash	12	S 33 E	14					
	Birch	5	Corner			19.20.29.30	Elm	12	S 27 E	7		Iron wood	5	Corner	
							Do	10	N 49	23					
C	W Oak	36	Corner			29.30.31.32	B Ash	6	Corner		K&W 2	Birch	12	S 40 E	35
												Do	14	N 50 E	14
	Iron wood	6	Corner			4.5.8.9	Birch	6	S 50 E	5		Iron wood	10	Corner	
							B Ash	5	N 30 W	7					
D	Elm	18	N 60 E	16		8.9.16.17	Birch	20	S 74 W	20		Birch	15	S 54 E	14
	Do	24	N 80 W	24			Do	24	N 54 E	6		Do	16	N 30 E	10
d	Maple	7	Corner			16.17.20.21	Poplar	28	S 80 E	14		Sugar	18	Corner	
							Maple	18	S 45 E	14					
							Birch	12	Corner			Maple	14	N 33 W	13
E	Birch	11	N 60 E	6		3.4.9.10	Do	7	N 45 E	9	I&X 1	Iron wood	6	N 40 W	13
	Sugar	20	N 15 E	12			Do	16	S 40 E	7		B Ash	6	Corner	
	Elm	24	Corner			9.10.15.16	B Ash	7	N 45 E	9					
							Do	16	S 40 E	7					
F	Birch	10	S 39 E	10		15.16.21.22	B Ash	12	North	31		Lynn	14	West	64
	B Ash	14	N 14 E	23			Do	13	S 30 W	32		Corner in	Salim	Rim	
J	W Oak	16	S 12 E	10		2.3.10.11	W Oak	30	Corner			B Ash	7	Corner	
	Birch	6	S 58 W	15											
G	Elm	10	Corner		E to H 3 <sup>rd</sup> rate, hnd & wt.	10.11.14.15	Sugar	16	N 5 W	19		Sugar	10	Corner	
							Birch	14	S 77 E	21					
	Birch	5	Corner		B. Ash. Elm. Maple. Birch &c.	14.15.22.23	Hickory	12	N 27 W	16		Lynn	18	N 53 W	14
							W Ash	10	S 30 E	11		Iron wood	10	N 32 E	22
H	Elm	12	Corner		H to I same	1.2.11.12	Sugar	14	Corner			Iron wood	3	Corner	
*	Birch	12	Corner		I to X 3 <sup>rd</sup> rate - Affun. Birch &c.	11.12.13.14	W Oak	20	S 70 W	16	H to Y 1	Hickory	14	S 85 W	16
							Do	14	S 34 E	37		B Ash	14	N 5 E	22
												Affun	7	Corner	
V	B Ash	12	S 46 W	14											
	Ash	4	S 42 E	7											
	Lynn	18	N 20 W	19											
	Do	16	N 75 E	25											
U	Birch	14	East	22											
	Sugar	20	N 2 E	25											
u	W Oak	20	S 55 W	42											
	Birch	12	S 6 W	46											
V	Maple	30	N 58 E	5											
	Birch	8	N 88 W	11											
v	Birch	6	S 81 W	12											
	Lynn	4	S 42 E	10											
W	W Oak	11	S 58 W	10											
	Do	14	S 55 E	10											
u	Maple	12	N 32 W	8											
	Birch	5	East	7											
X	Maple	16	S 81 E	25											
	Do	10	S 22 W	19											
x	Ash	13	S 22 W	18											
	Elm	6	N 80 E	17											
Y	Ash	5	Corner												
y	Shorn	3	Corner												
*	B Ash	16	N 85 E	22											
	Do	23	North	19											

**Corners on Private Claims.**

1	Birch	7	N 5 W	15
	Sugar	8	S 60 W	10
2	Red Oak	28	Corner	
3	Collonwood	40	N 26 W	25
	W Ash	6	N 88 W	19
4	Lynn	16	Corner	
5	Elm	8	N 3 E	15
	W Oak	22	N 49 E	18
6	Elm	20	N 18 E	25
	Do	18	N 84 W	29
7	Elm	18	Corner	
8	Ash	14	Corner	
9	Birch	6	Corner	
10	Hickory	11	S 77 W	44
	Sapoffas	8	N 39 W	38
11	W Ash	10	Corner	
12	W Oak	24	North	9
	Do	11	N 74 E	10
13	Elm	---	Corner	
14	Sycamore	46	Corner	
15	Lynn	---	Corner	
16	Birch	---	Corner	
17	W Oak	14	S 20 E	8
	Do	7	S 47 E	10
18	Hornbeam	6	Corner	
19	Post	---	---	
20	Iron wood	10	N 55 W	17
	Cherry	4	S 25 E	6
21	B Ash	10	N 73 W	18
	Elm	12	S 74 W	25
22	Hickory	---	Corner	
23	B Ash	14	North	24
	W Ash	12	N 55 E	26
24	W Oak	24	Corner	
25	W Oak	24	Corner	
26	Lynn	10	N 58 W	13
	Do	12	S 23 E	34
27	W Ash	10	S 72 W	5
	Do	9	N 33 W	13
28	Birch	16	N 20 W	12
	Do	12	S 88 W	12
29	B Ash	9	S 10 E	10
	Do	12	S 73 W	22

0&F

P&E

Q&D

R&C

S&B