

Township N. V North, Range N. XIII East of Mer. (Mich. Ter.)

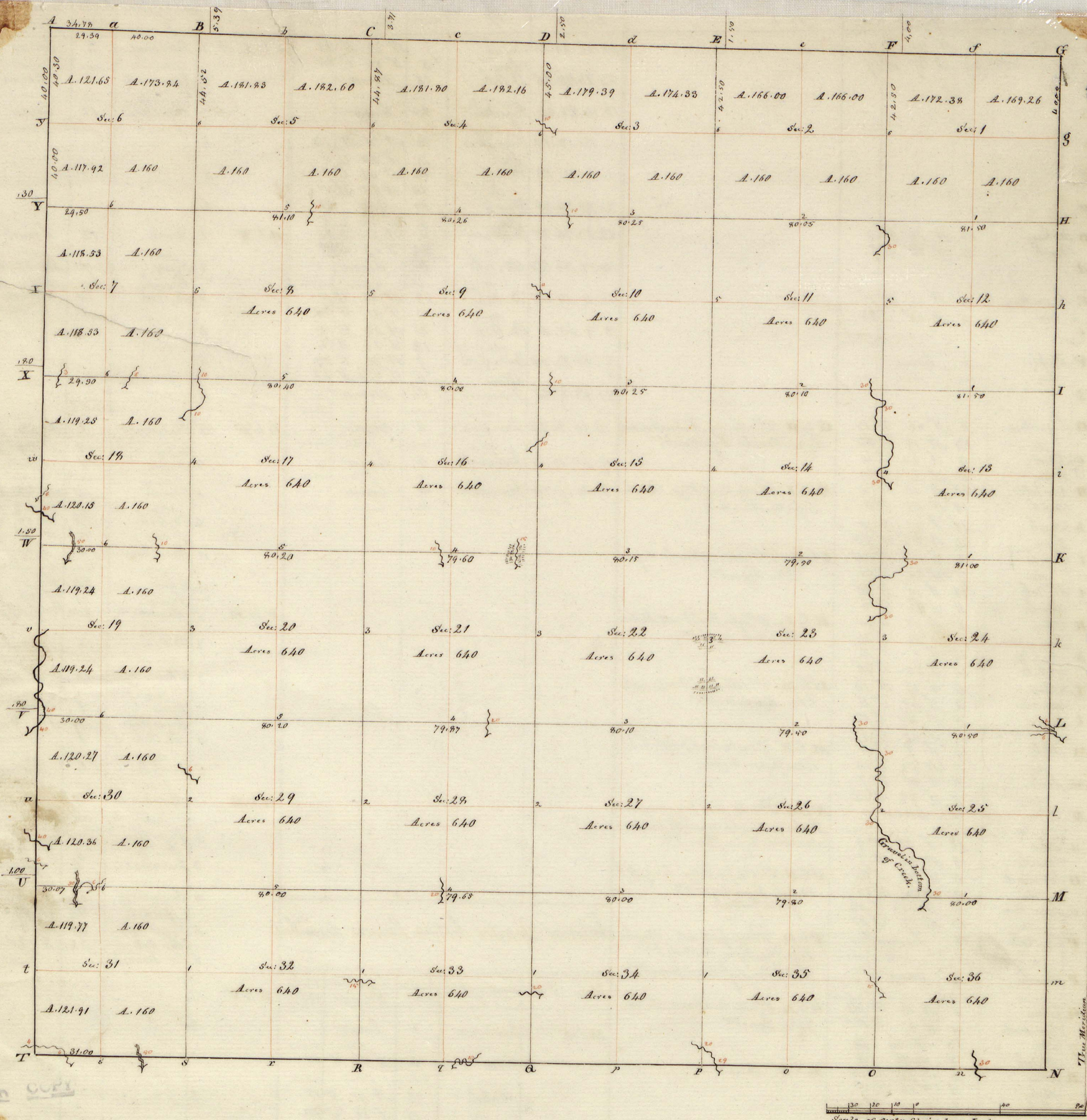
A true Copy from the Original on file in this Office

Acres Due  
Total quantity 22,726.41

Surveyor General's Office  
Feb. 20 - 1878

Edward H.  
Surveyor

POOR COPY



Township N<sup>o</sup> V. North, Range N<sup>o</sup> XIII East of the Meridian. (Mich: Ter.) Surveyed by William Preston 1817

Description of the Soil on the interior sectional lines.

Between sections	Quality &c.	Between sections	Quality &c.	Between sections	Quality &c.
33.36	2 <sup>nd</sup> rate part wet - Beech, B. Ash, Sugar, 2 <sup>nd</sup> rate fallen timber -	33.34	2 <sup>nd</sup> rate level dry - W. Oak, W. Ash, Sugar, Elm, Spruce, 1 <sup>st</sup> rate Spruce, Sugar	48.5	Good 2 <sup>nd</sup> rate - B. Ash, Elm, Spruce, Beech, Sugar
25.36	Same	27.34	Same	31.36	Same
23.26	2 <sup>nd</sup> rate level dry - fallen timber - W. Oak, Beech, Sugar, Elm, Spruce	27.28	Same - part fallen	29.32	Same
24.25	2 <sup>nd</sup> rate part wet - B. Ash, Beech, 2 <sup>nd</sup> rate fallen timber - W. Oak, as last	22.27	Same - Same	29.30	Same - (with B. Oak)
23.24	2 <sup>nd</sup> rate rolling dry - fallen timber - W. Oak, as last	21.22	Same - Same	26.29	Wet 2 <sup>nd</sup> rate - fallen timber - Beech, Thorn, Birch
13.24	Same - timber part fallen	15.22	Same	19.24	Same - do
13.14	Same - timber fallen	15.16	Same	17.20	Same - do
12.13	Same - Same	10.15	2 <sup>nd</sup> rate level dry - fallen timber	17.18	Same - do
11.14	Same - last fallen & part wet - fallen timber	9.10	Same	16.17	Same - do
1.12	2 <sup>nd</sup> rate part wet - B. Ash, Beech, Elm, 2 <sup>nd</sup> rate fallen	3.10	Same	9.18	Same - first 1/2 dry fallen timber
1.2	First 1/2 marshy 2 <sup>nd</sup> rate - last 1/2 2 <sup>nd</sup> rate - W. Oak, B. Ash	3.11	Same - W. Oak, beech, Sugar, Elm, Spruce - W. Oak, Spruce	5.8	2 <sup>nd</sup> rate wet - B. Ash, Beech, Elm, Spruce, 2 <sup>nd</sup> rate Spruce
34.35	First 1/2 2 <sup>nd</sup> rate level wet - last 1/2 part dry - Beech, Sugar, Spruce, Maple	22.33	Same - timber part fallen	5.6	Same
26.25	Same	28.23	Same	20.31	Good rolling 2 <sup>nd</sup> rate - Sugar, W. Oak, W. Ash, Beech, Spruce, part
26.24	Same - timber fallen - W. Oak, Birch, Thorn, Alder, Willow	28.20	Same	19.30	2 <sup>nd</sup> rate wet fallen timber
23.26	2 <sup>nd</sup> rate level dry - fallen timber - W. Oak, as last	21.28	Same - Same	18.19	Same
22.23	2 <sup>nd</sup> rate wet - fallen timber - W. Oak, as last	20.21	Sandiest part wet 2 <sup>nd</sup> rate - last 1/2 2 <sup>nd</sup> rate part wet - Beech, B. Ash, 1 <sup>st</sup> rate fallen - W. Oak, Spruce, Cherry, Quaking aspen, W. Oak, Elm, Thorn	17.18	Wet 2 <sup>nd</sup> rate - fallen timber
14.23	2 <sup>nd</sup> rate part wet - fallen timber - W. Oak, as last	16.21	2 <sup>nd</sup> rate sandy soil - fallen timber - W. Oak, W. Ash, Spruce, Thorn, Birch, Cherry	16.7	Same
14.15	2 <sup>nd</sup> rate wet - B. Ash, Beech, 2 <sup>nd</sup> rate	16.17	2 <sup>nd</sup> rate wet - B. Ash, Elm, 2 <sup>nd</sup> rate fallen - W. Oak, as above	9.16	Same
11.14	Same - timber same - part fallen	9.16	Same	8.0	2 <sup>nd</sup> rate - B. Ash, Beech, Elm, as above
10.11	Same - B. Ash, Beech, Elm, Spruce				
2.11	Same - timber same - part fallen				

Trunks Bearing trees	Inches diam.	Courses they bear	Sinks dist.	Quality of the Soil	Corners of Section	Bearing trees	Inches diam.	Courses they bear	Sinks dist.	From I to	Bearing trees	Inches diam.	Courses they bear	Sinks dist.	
A B. Ash	10	N 17 E 82			25.26.25.26	Hickory	7	N 65 W 18		I to X at 1	Elm	6	corner		
a Ash	6	S 50 W 65			23.24.25.26	Elm Aspin	6 7	S 70 W 9 corner		2	B. Ash	4	corner		
B Hornbeam	3	corner			13.14.23.24	Sugar	6	N 11 W 41		3	Ash	5	South 80		
b					11.12.13.14	Beech Maple	8 18	S 61 W 45 S 25 W 100		4	Elm	5	S 29 W 50		
C Elm	16	N 72 1/2 W 9			1.2.11.12	Elm corner	5 100	S 40 E 60 a Pond		5	Aspin	18	S 86 E 32		
c Spnu	18	N 1 E 24			26.27.34.35	N. Ash Sugar	10 18	S 43 E 31 North 8		6	Elm	6	corner		
D Spnu	18	N 85 W 18			22.23.26.27	Spnu Elm	18 10	North 8 corner		H to Y	1	Beech	12	corner	
d Elm	16	S 86 E 24			14.15.22.23	Elm	36	corner		2	Hornbeam	4	corner		
E N. Ash	14	East 24			10.11.14.15	Spnu B. Ash	6 7	S 76 W 8 North 22		3	Spnu	18	N 82 1/2 W 32		
e Elm	24	South 17			2.3.10.11	Spnu	5	corner		4	Sugar	14	N 54 E 12		
F Hickory	3	corner			27.28.33.34	Sugar	12	corner		5	N. Ash	7	S 15 W 7		
f					21.22.27.28	Elm N. Ash	6 3	N 29 W 32 S 45 W 18		6	Elm	5	N 24 E 18		
G Elm	6	corner			15.16.21.22	Cherry	3	S 45 W 20		O to F	1	Ironwood	6	corner	
g Spnu	6	S 18 W 23			9.10.15.16	B. Ash	18	S 4 E 17		2	Beech	10	N 85 W 25		
h Elm	10	N 78 W 20				do	15	S 64 E 31		3	Ironwood	6	S 26 W 19		
I Spnu	6	N 41 W 4			3.4.9.10	Elm	6	S 65 W 25		4	No bearing trees				
J Sugar	16	South 10			23.29.32.33	Cherry Beech	6 7	S 80 W 48 N 36 E 16		5	Plumb	6	corner		
K N. Oak	12	N 14 E 6			20.21.28.29	do	6	S 48 W 16		6	Beech	10	N 43 W 45		
L Elm	14	N 86 W 46			16.17.20.21	do	6	S 26 E 26		7	do	6	S 56 E 34		
M Beech	14	N 7 W 20			8.9.16.17	Ash Spnu	3 3	S 24 E 28 S 9 W 32		P to H	1	Beech	7	corner	
N do	10	S 33 1/2 W 33			4.5.8.9	Elm	4	corner		2	B. Ash	6	corner		
O Sugar	6	S 84 W 16			29.30.31.32	Spnu	11	corner		3	Post	100	Marsh		
P Spnu	10	S 59 E 19			19.20.29.30	Beech	18	S 46 E 10		4	Sugar	8	corner		
Q Aspin	16	S 14 1/2 W 32			17.18.19.20	Sugar	12	N 7 E 21		5	Beech	10	N 55 1/2 E 15		
R		S 38 W 40			7.8.17.18	Elm	6	East 21		6	do	8	S 10 W 12		
S					5.6.7.8	B. Ash Ash	7 8	S 7 W 9 N 25 E 17		7	do	10	S 73 W 29		
T						Beech	6	N 20 W 18		8	Beech	10	S 23 W 11		
U						do	7	S 63 E 38		9	do	7	S 65 W 16		
V										10	do	7	N 61 E 17		
W										11	do	18	corner		
X										12	do	8	N 58 E 11		
Y										13	do	7	S 88 W 23		
Z										14	do	5	corner		

Interior Quarter Section Corners described

From I to	Bearing trees	Inches diam.	Courses they bear	Sinks dist.	From I to	Bearing trees	Inches diam.	Courses they bear	Sinks dist.
M to U at 1	Elm	3	corner		R to C	1	Sugar Beech	16 8	S 48 W 36 S 45 E 35
2	Spnu	6	corner		2	Beech	4	corner	
3	B. Ash	10	N 14 E 7		3	Hornbeam	2	corner	
4	do	8	S 33 E 10		4	Elm	4	corner	
5	B. Ash	10	N 4 E 17		5	Cherry	4	corner	
6	do	12	N 77 E 10		6	B. Ash	8	corner	
7	Beech	12	corner		7	do	18	S 38 E 19	
8	N. Oak	30	S 33 E 11		8	do	12	S 40 W 13	
9	B. Ash	10	N 83 W 19		9	Sugar	24	corner	
10	do	12	S 80 W 20		10	do	8	S 14 E 40	
11	Elm	8	S 77 W 78		11	Elm	7	S 33 E 60	
12	do	6	corner		12	Spnu	7	corner	
13	Beech	10	S 3 E 19		13	B. Cherry	3	corner	
14	do	20	S 38 E 33		14	do	6	S 70 W 33	
15	Beech	7	S 44 E 15		15	do	7	North 37	
16	do	6	N 29 W 31		16	do	20	N 4 W 12	
17	Spnu	8	East 34		17	do	9	S 19 E 9	
18	Elm	6	N 85 W 30						
19	Beech	12	N 5 W 9						
20	do	12	S 85 E 29						
21	Elm	12	S 21 W 10						
22	Beech	6	N 46 W 10						
23	do	6	corner						
24	Spnu	4	West 60						
25	do	4	S 59 W 10						
26	Sugar	8	S 49 E 45						
27	Aspin	3	corner						
28	do	6	corner						