

LAND CORNER RECORDATION CERTIFICATE
Filing Requirement of Act 74, Mich. P.A. 1970

For corners in

CHESTERFIELD TOWNSHIP

<u>MACOMB</u> (County)	Located In:	Corner Code #
1. Public Land Survey	T <u>3N</u> R <u>14E</u>	<u>M-6</u>
	T ___ R ___	_____
	T ___ R ___	_____
	T ___ R ___	_____
2. Property Controlling in Section	S ___ T ___ R ___	_____
	S ___ T ___ R ___	_____
3. Miscellaneous Property in Sec.	S ___ T ___ R ___	_____
	S ___ T ___ R ___	_____

2271241
LIBER 12468 PAGE 291
 11/15/2002 12:36:01 P.M.
 MACOMB COUNTY, MI SEAL
 CARMELLA SABAUGH, REGISTER OF DEEDS

2282792
LIBER 12535 PAGE 524
 11/26/2002 01:40:15 P.M.
 MACOMB COUNTY, MI SEAL
 CARMELLA SABAUGH, REGISTER OF DEEDS

4. Lot No. _____, Recorded Plat _____
 5. Private Claims _____

I, ROBERT H. BIRKETT, in a field survey on July, 2002 do hereby certify that under requirements of P.A. 74, Michigan P.A. of 1970, the corner points mentioned in lines 1 and 2 above were in conformance with regulations and rules therefore as required in the current manual of survey instructions of the United States Department of the Interior, Bureau of Land Management or by a decree of a Court of Law and /or that the corner points mentioned in lines 3, 4 and 5 above were in conformance with the rules of the Michigan Board of Land Surveyors or by a Decree of a Court of Law; established, re-established, monumented, re-monumented, recovered, found as expressed below:

A	B	C	D	E	F	G	H	I	J	K	L	M
1												
2	6	5	4	3	2	1						
3												
4	7	8	9	10	11	12						
5												
6	18	17	16	15	14	13						
7												
8	19	20	21	22	23	24						
9												
10	30	29	28	27	26	25						
11												
12	31	32	33	34	35	36						
13												

NOTE: Not more than 2 corners, all in the same town and range, may be recorded on this certificate.

A. Description of original monument and accessories and/or subsequent restoration:
 M-6 CHESTERFIELD
 1817, PRESTON GLO, SET WOOD POST, GENERAL LAND OFFICE FILE NOTES.

B. Description of corner evidence found and/or method applied in restoring or reestablishing corner:
 M-6 CHESTERFIELD - SET CORNER AT A PRORATED DISTANCE OF 1347.63 FEET FROM THE INTERSECTION OF THE EAST LINE OF CHESTERFIELD TOWNSHIP AND THE SOUTH LINE OF P. C. 614, ALSO THE RIGHT OF WAY IRONS ON THE WEST SIDE OF COUNTY LINE ROAD BETWEEN GREEN STREET AND MAIN STREET.
 CORNER IS COMMON TO A-6, IRA TOWNSHIP, TOWN 3 NORTH, RANGE 15 EAST.

FIELD MEASUREMENTS
 M-6 TO THE INTERSECTION OF THE EAST LINE OF CHESTERFIELD TOWNSHIP AND THE SOUTH LINE OF P. C. 614.
 GLO (1817) 19.95 CHAINS (1316.70')
 REMON (2002) 1347.63'

*BEING RERECORDED TO CORRECT DATE SIGNED.

C. Description of monument for corner and accessories established to perpetuate locating the position of the corner:
 M-6 CHESTERFIELD SET A 3/4" RE-BAR WITH A 2" DIAMETER ALUMINUM CAP STAMPED "MACOMB COUNTY MONUMENT, MI ACT 345, PCC, IN A NEW MONUMENT BOX.

- 30° - 35.75' - SET NAIL WITH REMON TAG NORTHWEST FACE TELEPHONE POLE.
- 105° - 56.85' - SET NAIL WITH REMON TAG IN SOUTHWEST FACE 10" PINE.
- 210° - 58.73' - SET NAIL WITH REMON TAG NORTHWEST FACE 10" OAK.
- 340° - 56.91' - SET NAIL WITH REMON TAG IN NORTHEAST FACE UTILITY POLE.

THE SELECTED LOCATION IS ACCEPTED BY ME AND IS GENERALLY ACCEPTED BY PROFESSIONAL SURVEYORS AS THE BEST AVAILABLE EVIDENCE OF THE POSITION OF THE ORIGINAL CORNER.

ACCEPTED BY THE MACOMB COUNTY SURVEY PEER
 BOARD AS THE OFFICIAL CORNER UNDER MICHIGAN
 PUBLIC ACT 345 OF 1990 AT A MEETING HELD
 ON 9/24/02

William E. Soderberg
 WILLIAM E. SODERBERG, P.S., CHAIRMAN

Signed by *Robert H. Birkett* Date 10/31/02
 Surveyor's Michigan License No. 41094



LAND CORNER RECORDATION CERTIFICATE
Filing Requirement of Act 74, Mich. P.A. 1970

For corners in

CHESTERFIELD TOWNSHIP

Located In: _____ Corner Code # _____

MACOMB
(County)

- | | | | |
|------------------------------------|---------|-------------------|------------|
| 1. Public Land Survey | | <u>T 3N R 14E</u> | <u>M-6</u> |
| | | T _____ R _____ | _____ |
| | | T _____ R _____ | _____ |
| | | T _____ R _____ | _____ |
| 2. Property Controlling in Section | S _____ | T _____ R _____ | _____ |
| | S _____ | T _____ R _____ | _____ |
| 3. Miscellaneous Property in Sec. | S _____ | T _____ R _____ | _____ |
| | S _____ | T _____ R _____ | _____ |

2271241
LIBER 12468 PAGE 291
 11/15/2002 12:36:01 P.M.
 MACOMB COUNTY, MI
 CARMELLA SABAUGH, REGISTER OF DEEDS

SEAL

Register of Deeds Stamp & File Number

4. Lot No. _____, Recorded Plat _____
 5. Private Claims _____

I, ROBERT H. BIRKETT, in a field survey on July, 2002 do hereby certify that under requirements of P.A. 74, Michigan P.A. of 1970, the corner points mentioned in lines 1 and 2 above were in conformance with regulations and rules therefore as required in the current manual of survey instructions of the United States Department of the Interior, Bureau of Land Management or by a decree of a Court of Law and /or that the corner points mentioned in lines 3, 4 and 5 above were in conformance with the rules of the Michigan Board of Land Surveyors or by a Decree of a Court of Law; established, re-established, monumented, re-monumented, recovered, found as expressed below:

	A	B	C	D	E	F	G	H	I	J	K	L	M
1													
2		6		5		4		3		2		1	
3													
4		7		8		9		10		11		12	
5													
6		18		17		16		15		14		13	
7													
8		19		20		21		22		23		24	
9													
10		30		29		28		27		26		25	
11													
12		31		32		33		34		35		36	
13													

NOTE: Not more than 2 corners, all in the same town and range, may be recorded on this certificate.

A. Description of original monument and accessories and/or subsequent restoration:
 M-6 CHESTERFIELD
 1817, PRESTON GLO, SET WOOD POST, GENERAL LAND OFFICE FILE NOTES.

B. Description of corner evidence found and/or method applied in restoring or reestablishing corner:
 M-6 CHESTERFIELD - SET CORNER AT A PRORATED DISTANCE OF 1347.63 FEET FROM THE INTERSECTION OF THE EAST LINE OF CHESTERFIELD TOWNSHIP AND THE SOUTH LINE OF P. C. 614, ALSO THE RIGHT OF WAY IRONS ON THE WEST SIDE OF COUNTY LINE ROAD BETWEEN GREEN STREET AND MAIN STREET.
 CORNER IS COMMON TO A-6, IRA TOWNSHIP, TOWN 3 NORTH, RANGE 15 EAST.

FIELD MEASUREMENTS
 M-6 TO THE INTERSECTION OF THE EAST LINE OF CHESTERFIELD TOWNSHIP AND THE SOUTH LINE OF P. C. 614.
 GLO (1817) 19.95 CHAINS (1316.70')
 REMON (2002) 1347.63'

C. Description of monument for corner and accessories established to perpetuate locating the position of the corner:
 M-6 CHESTERFIELD SET A 3/4" RE-BAR WITH A 2" DIAMETER ALUMINUM CAP STAMPED "MACOMB COUNTY MONUMENT, MI ACT 345, PCC, IN A NEW MONUMENT BOX.

- 30° - 35.75' - SET NAIL WITH REMON TAG NORTHWEST FACE TELEPHONE POLE.
- 105° - 56.85' - SET NAIL WITH REMON TAG IN SOUTHWEST FACE 10" PINE.
- 210° - 58.73' - SET NAIL WITH REMON TAG NORTHWEST FACE 10" OAK.
- 340° - 56.91' - SET NAIL WITH REMON TAG IN NORTHEAST FACE UTILITY POLE.

THE SELECTED LOCATION IS ACCEPTED BY ME AND IS GENERALLY ACCEPTED BY PROFESSIONAL SURVEYORS AS THE BEST AVAILABLE EVIDENCE OF THE POSITION OF THE ORIGINAL CORNER.

ACCEPTED BY THE MACOMB COUNTY SURVEY PEER
 GROUP AS THE OFFICIAL CORNER UNDER MICHIGAN
 PUBLIC ACT 345 OF 1990 AT A MEETING HELD
 ON 9/24/02

William E. Soderberg
 WILLIAM E. SODERBERG, P.S., CHAIRMAN



Signed by Robert H. Birkett Date 11/31/02
 Surveyor's Michigan License No. 41094



WEST





GLO — PRO



NORTH @ MAIN

CORNERS	GLO DISTANCE	REMON DISTANCE
M-1 TO M-2	2640.00'	2698.35'
M-2 TO M-3	2640.00'	2691.62'
M-3 TO M-4	2640.00'	2665.51'
M-4 TO N'LY PC LINE	287.10'	344.43'
N'LY TO S'LY PC LINE	NOT MEASURED	3445.11'

FROM NORTH GLO DISTANCE = 8207.10'
 FROM NORTH ACTUAL DISTANCE = 8399.91'

S'LY PC LINE TO M-6 ~~1347~~ -GLO 134763
 1316.70

223-019
9-8-99
EWS, HJD

IRA
A-6

CHEST
M-6

58

320° 45.81 (PRO)
SET P.K. w/TAG REMON IN N.E. FACE U.P.

295° 30.43 (LOLO)

205° 66.20 (PRO)

SET P.K. w/TAG REMON IN N.W. FACE

10" OAK

195° 85.55' (LOLO)

115° 39.60' (PRO)

SET P.K. NAIL w/TAG REMON IN

S.W. FACE 12" PINE

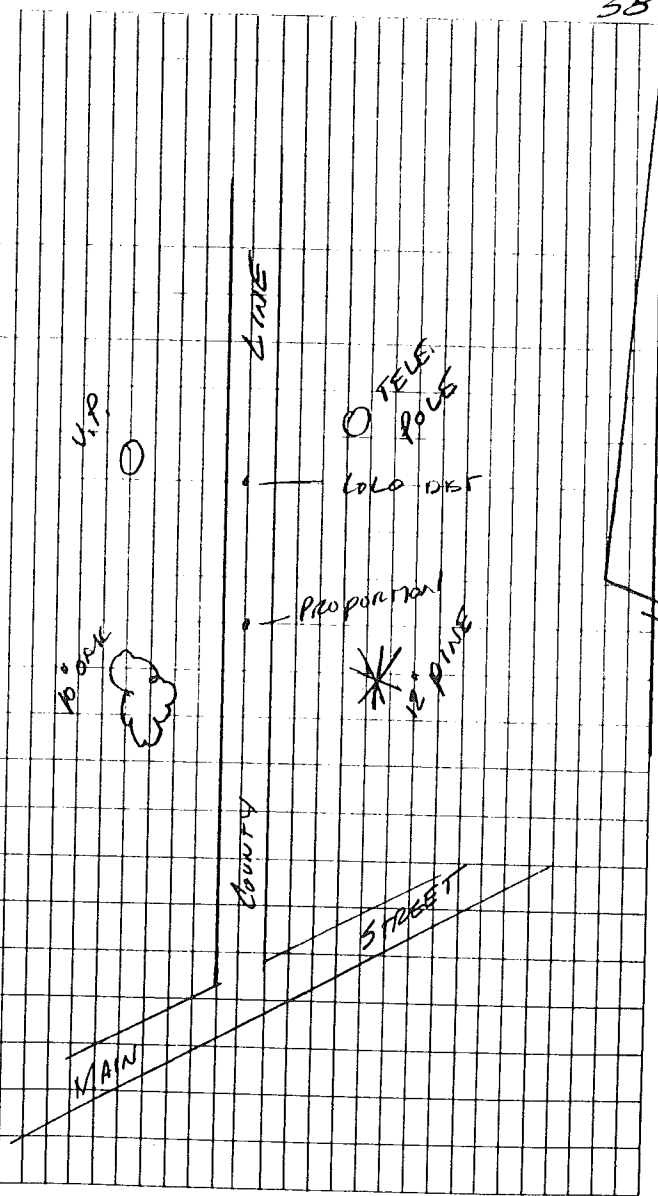
135° 54.34' (LOLO)

35° 28.58' (PRO)

SET P.K. NAIL w/TAG REMON IN

N.W. FACE TELE. POLE

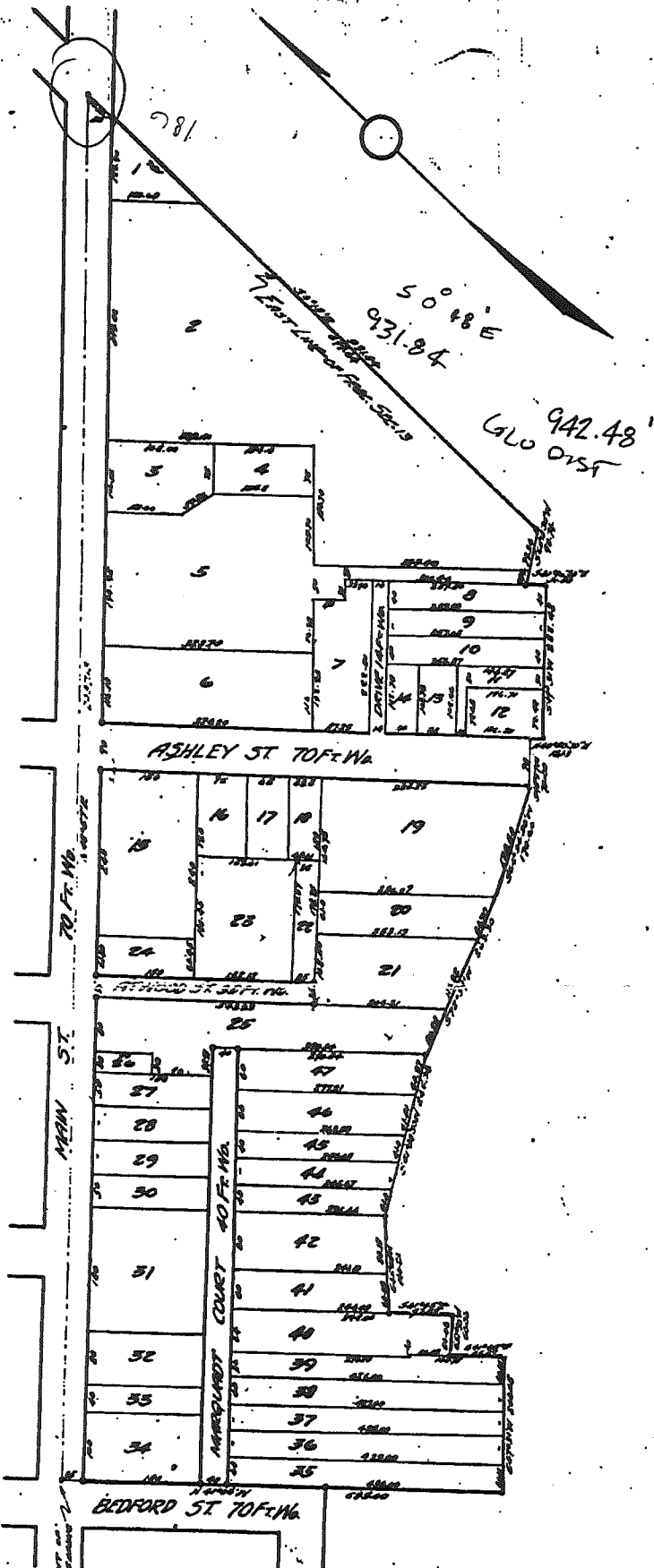
70° 42.85' (LOLO)



ASSESSOR'S PLAT NO. 1
OF PART OF FRAC. SEC. 13 T.3.N. R.14.E.
OF PART OF THE VILLAGE OF NEW BALTIMORE
MACOMB CO. MICH.

SCALE 1" = 150'

Examined and Approved
May 28 1931
Fuller



HARRY J. FULLER
 REGISTERED CIVIL ENGINEER & SURVEYOR
 MT. CLEMENS MICH.

DEDICATION

KNOW ALL MEN BY THESE PRESENTS, that I *William D. Hill* Assessor of the Village of New Baltimore, of Macomb County, State of Michigan, by virtue of authority in me vested by Section 51, Act 172, of 1929, having been duly authorized by the Village Council, have caused the land described in the annexed plat to be surveyed, laid out and platted, to be known as "ASSESSOR'S PLAT NO. 1" of part of Frac. Sec. 13, T.3.N.R. 14 E., of part of the Village of New Baltimore, Macomb Co., Mich., and that the streets and alleys as shown on said plat are now being used for such purposes.

Witness:
William D. Hill (Seal)
 Assessor of the Village of New Baltimore.

ACKNOWLEDGMENT

STATE OF MICHIGAN }
 County of Macomb } ss
 On this 16th day of January, A.D. 1931, before me a Notary Public in and for said county, personally came the above named William D. Hill known to me to be the person who executed the above dedication, and acknowledged the same to be his free act and deed as such Assessor.

My commission expires Oct 22, 1932

DESCRIPTION

The land embraced in the annexed plat of ASSESSOR'S PLAT NO. 1., of part of Frac. Sec. 13, T.3.N.R. 14 E., of part of the Village of New Baltimore, Macomb Co., Mich., is described as follows: Commencing at the intersection of the centerline of Main Street and the northerly line of Bedford Street, thence N. 48 deg. 57' E. a distance of 2037.13 ft., thence S. 00 deg. 18' E., a distance of 931.84 ft., thence S. 60 deg. 18' 30" W. a distance of 93.74 ft., thence S. 40 deg. 46' 30" E. a distance of 31.50 ft., thence S. 49 deg. 31' W. a distance of 222.48 ft., thence N. 40 deg. 50' 30" W. a distance of 18.03 ft., thence S. 48 deg. 57' W. a distance of 70 ft., thence S. 64 deg. 34' 30" W. a distance of 170.60 ft., thence S. 72 deg. 59' W. a distance of 263.30 ft., thence S. 61 deg. 38' 30" W. a distance of 245.38 ft., thence S. 45 deg. 45' W. a distance of 140.21 ft., thence S. 41 deg. 05' E. a distance of 97.52 ft., thence S. 51 deg. 30' W. a distance of 60.06 ft., thence S. 41 deg. 05' E. a distance of 85.67 ft., thence S. 47 deg. 31' W. a distance of 200.05 ft., thence N. 41 deg. 05' W. a distance of 685 ft. to the point of beginning.

SURVEYOR'S CERTIFICATE

I hereby certify that the plat hereon delineated is a correct one and that permanent metal monuments of not less than one inch in diameter and fifteen inches in length set in a concrete base at least four inches in diameter and forty-eight inches in depth have been placed at points marked thus (o) as thereon shown at all angles in the boundaries of the land platted, at all the intersections of streets, intersections of alleys, or of streets and alleys, and at the intersections of streets and alleys with the boundaries of the plat as shown on said plat.

H. J. Fuller
 REGISTERED SURVEYOR

CERTIFICATE OF MUNICIPAL APPROVAL

This plat was approved by the Common Council of the Village of New Baltimore at a meeting held DEC 8 1930

Albert P. De Fuxe
 CLERK

CERTIFICATE OF APPROVAL BY COUNTY BOARD

This plat was approved on the 17th day of January, 1931.

Charles H. Hummich
 JUDGE OF PROBATE
James A. Hartung
 COUNTY CLERK
Ray J. Sherman
 COUNTY TREASURER

REGISTER'S OFFICE
 County of Macomb

Received for Record this 28 day
 of MAY 28 1931 A.D. 1931
 at 11:00 o'clock A.M. and Recorded
 in Liber 16 at 11:00
 on Page 32

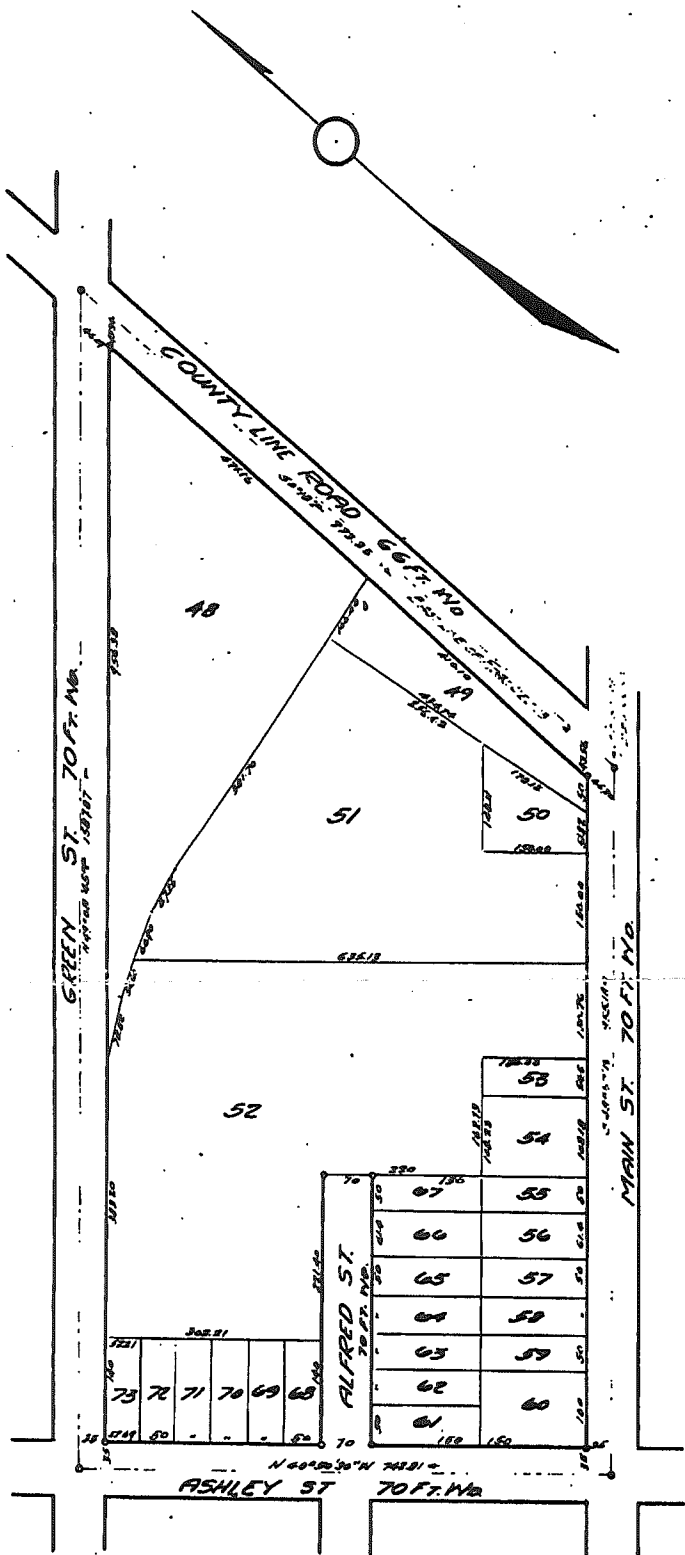
W. J. Mayhew
 REGISTER

ASSESSOR'S PLAT NO 2
 OF PART OF FRAC. SEC. 13 T. 3. N. R. 14 E.
 OF PART OF THE VILLAGE OF NEW BALTIMORE
 MACOMB CO. MICH.

SCALE 1" = 150'

Examined and Approved
 May 25-1931
W. P. Hummer
 Deputy Auditor General

CHESBROUGH
 1931 "A.P. #2"
 M-6
 15-34



KNOW ALL MEN BY THESE PRESENTS, That I, *William D. Hill*
 Assessor of the village of New Baltimore, of Macomb
 County, State of Michigan, by virtue of authority
 in me vested by Section 51, Act 172, of 1929, having
 been duly authorized by the Village Council, have
 caused the land described in the annexed plat to be
 surveyed, laid out and platted, to be known as
 'ASSESSOR'S PLAT NO. 2' of part of Frac. Sec. 13,
 T. 3. N. R. 14 E., of part of the Village of New Baltimore,
 Macomb Co., Mich., and that the streets and alleys as
 shown on said plat are now being used for such purposes.
 WITNESSES:
Ed. P. Phillips
William D. Hill (Seal)
 ASSESSOR OF THE VILLAGE OF
 NEW BALTIMORE

ACKNOWLEDGMENT

STATE OF MICHIGAN }
 County of Macomb } SS
 On this 16th day of January, A.D. 1931,
 before me, a Notary Public, in and for said county, James D. Wake
 personally came the above named William D. Hill of
 the village of New Baltimore known to me to be the person who
 executed the above dedication and acknowledged the same
 to be his free act and deed as such Assessor
James D. Wake
 NOTARY PUBLIC, MACOMB CO., MICH.
 My commission expires Oct 22 1932

DESCRIPTION

The land embraced in the annexed plat of 'ASSESSOR'S PLAT
 NO. 2' of part of Frac. Sec. 13, T. 3. N. R. 14 E., of part
 of the Village of New Baltimore, Macomb Co., Mich., is
 described as follows: Commencing at the intersection of
 the centerlines of the County Line Road and Main Street,
 thence S. 40 deg. 57' W. a distance of 955.18 ft.,
 thence N. 40 deg. 50' 30" W. a distance of 742.31 ft.,
 thence E. 49 deg. 06' 45" N. a distance of 158' .37 ft.,
 thence S. 00 deg. 10' E. a distance of 973.35 ft. to the
 point of beginning.

SURVEYOR'S CERTIFICATE

I hereby certify that the plat hereon delineated is a
 correct one and that permanent metal monuments of not
 less than one inch in diameter and fifteen inches in
 length set in a concrete base at least four inches in
 diameter and forty-eight inches in depth have been placed
 at points marked thus (o) as thereon shown at all angles
 in the boundaries of the land platted, at all the inter-
 sections of streets, intersections of alleys, or of
 streets and alleys, and at the intersections of streets
 and alleys with the boundaries of the plat as shown on
 said plat.

J. C. Collins
 REGISTERED SURVEYOR

CERTIFICATE OF MUNICIPAL APPROVAL

This plat was approved by the Common Council of the
 Village of New Baltimore at a meeting held Jan 8 1931
Wm. C. ...
 CLERK

CERTIFICATE OF APPROVAL BY COUNTY BOARD

This plat was approved on the 17th day of January
 1931.
Charles H. Hummer
 JUDGE OF PROBATE
James B. Hartung
 COUNTY CLERK
Ray J. ...
 COUNTY TREASURER

HARRY J. FULLER
 REGISTERED CIVIL ENGINEER & SURVEYOR
 HT. CLEMENS MICH.

REGISTER'S OFFICE
 County of Macomb
 Received for Record this _____ day
 of MAY 26 1931 A.D. 1931 at
10:00 o'clock A.M. and Recorded
 in Liber 16 of 16
 on Page 57
Wm. J. ... Registrar

EXAMINED AND APPROVED:

Date OCTOBER 19 1953

John D. Lehner
Walter J. Lehner & Sons

"ASSESSORS PLAT HIGHVIEW SUB."
OF LOT 2 OF ASSESSOR'S PLAT NO. 1
OF PART OF FRAC. SEC. 13, T 3 N R 14 E, MACOMB CO.
AND PART OF FRAC. SEC. 18, T 3 N R 15 E, ST. CLAIR CO., CITY
OF NEW BALTIMORE, MICH.

155187

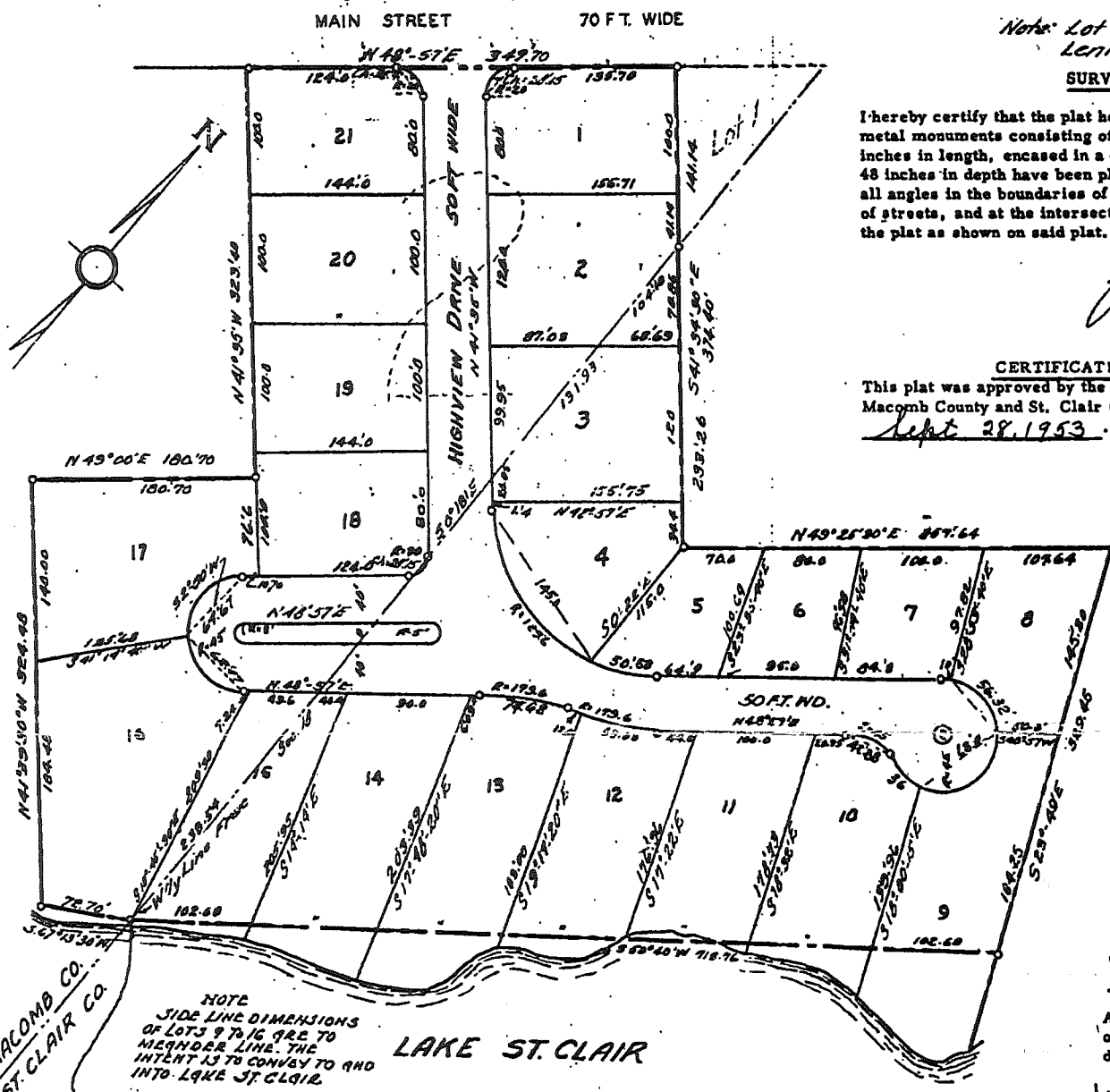
Oct 22 11 30 AM '53

SCALE 1" = 80'



Note: All dimensions are in feet & decimals thereof.

WALTER J. LEHNER & SONS
CIVIL ENGINEERING & SURVEYING
LAWYERS BLDG. MT. CLEMENS, MICH.



Note: Lot dimensions are chord lengths of curves.

SURVEYOR'S CERTIFICATE

I hereby certify that the plat herein delineated is a correct one and that permanent metal monuments consisting of bars not less than one-half inch in diameter and 48 inches in length, encased in a concrete cylinder at least 4 inches in diameter and 48 inches in depth have been placed at points marked thus (O) as thereon shown at all angles in the boundaries of the land platted, at all the intersections of the lines of streets, and at the intersections of the lines of streets with the boundaries of the plat as shown on said plat.

John D. Lehner
John D. Lehner,
Registered Land Surveyor
No. 5787

CERTIFICATE OF MUNICIPAL APPROVAL

This plat was approved by the City Commission of the City of New Baltimore, of Macomb County and St. Clair County, Michigan, at a meeting held

Sept 28, 1953.

Grace C. Balfour
Grace C. Balfour - Clerk.

CERTIFICATE OF APPROVAL BY COUNTY BOARD

This plat was approved on the 9th day of October 1953, by the Macomb County Plat Board.

Aaron Burr
Aaron Burr - Register of Deeds
Albert J. Wagner
Albert J. Wagner - County Clerk
Frank E. Lohr
Frank E. Lohr - County Drain Commissioner

CERTIFICATE OF APPROVAL BY THE COUNTY PLAT BOARD

Approved by the County Plat Board of St. Clair County, Michigan, this day of October 1953.

Morley A. Geph - Chairman
Walter B. Treleven - Secretary
Roy S. Richards - Member
Herbert E. Stern - Member

DEDICATION

KNOW ALL MEN BY THESE PRESENTS, That I, Frank J. Smith, Assessor of City of New Baltimore, Macomb County and St. Clair County, State of Michigan, by virtue of authority in me vested by Section 51, Act 172, of 1929, having been duly authorized by the City Council have caused the land described in the annexed plat to be surveyed, laid out, and platted, to be known as "Assessor's Plat Highview Sub" of Lot 2 of Assessor's Plat No. 1 of part of Frac. Sec. 13, T 3 N R 14 E., Macomb Co. and Part of Frac. Sec. 18, T 3 N R 15 E, St. Clair Co., City of New Baltimore, Mich., and that the streets as shown on said plat are now being used for such purposes.

Witnesses:

Mayne Allen
Mayne Allen
Rosemary Vernier
Rosemary Vernier

Frank J. Smith
Frank J. Smith, Assessor of the City of New Baltimore, Michigan

ACKNOWLEDGEMENT

STATE OF MICHIGAN SS.
County of Macomb)

On this 25th day of Sept A.D. 1953, before me, a Notary Public in and for said county, personally came the above named Frank J. Smith, Assessor of the City of New Baltimore, Michigan, known to me to be the person who executed the above dedication and acknowledged the same to be his free act and deed as such assessor.

My Commission expires:

July 7, 1954

Grace C. Kogina
Notary Public in for Macomb County, Michigan
Grace C. Kogina

DESCRIPTION OF LAND PLATTED

The land embraced in the annexed plat of "Assessor's Plat Highview Sub" of Lot 2 of Assessor's Plat No. 1 of Part of Frac. Sec. 13, T 3 N R 14 E, Macomb County and Part of Frac. Sec. 18, T 3 N R 15 E, St. Clair County, City of New Baltimore, Michigan, is described as follows: Commencing at the intersection of the West line of Frac. Sec. 18, T 3 N R 15 E. and the Bank of Lake St. Clair and thence extending along the Bank of Lake St. Clair S. 67°-13'-30" W. 72.70 ft., thence N. 41°-39'-30" W. 324.48 ft., thence N. 49°-00' E. 180.70 ft., thence N. 41°-35' W. 323.40 ft., thence N. 48°-57' E. 349.70 ft., thence S. 41°-34'-30" E. 374.40 ft., thence N. 49°-25'-30" E. 357.64 feet., thence S. 23°-49' E. 329.45 feet, thence along the Bank of Lake St. Clair S. 50°-40' W. 718.76 feet to the point of beginning.

REGISTER'S OFFICE
County of Macomb

Received for Record this 22nd day of October A.D. 1953 at 11:13 o'clock AM and Recorded in Liber 29 of Plats on Page 12
Walter J. Lehner

ORIGINAL - Macomb County

EXAMINED AND APPROVED:

Date OCTOBER 19, 1953

John D. Lehner

Walter J. Lehner

"ASSESSOR'S PLAT HIGHVIEW SUB."

OF LOT 2 OF ASSESSOR'S PLAT NO. 1
OF PART OF FRAC. SEC. 13, T 3 N R 14 E, MACOMB CO.
AND PART OF FRAC. SEC. 18, T 3 N R 15 E, ST. CLAIR CO., CITY
OF NEW BALTIMORE, MICH.

155187

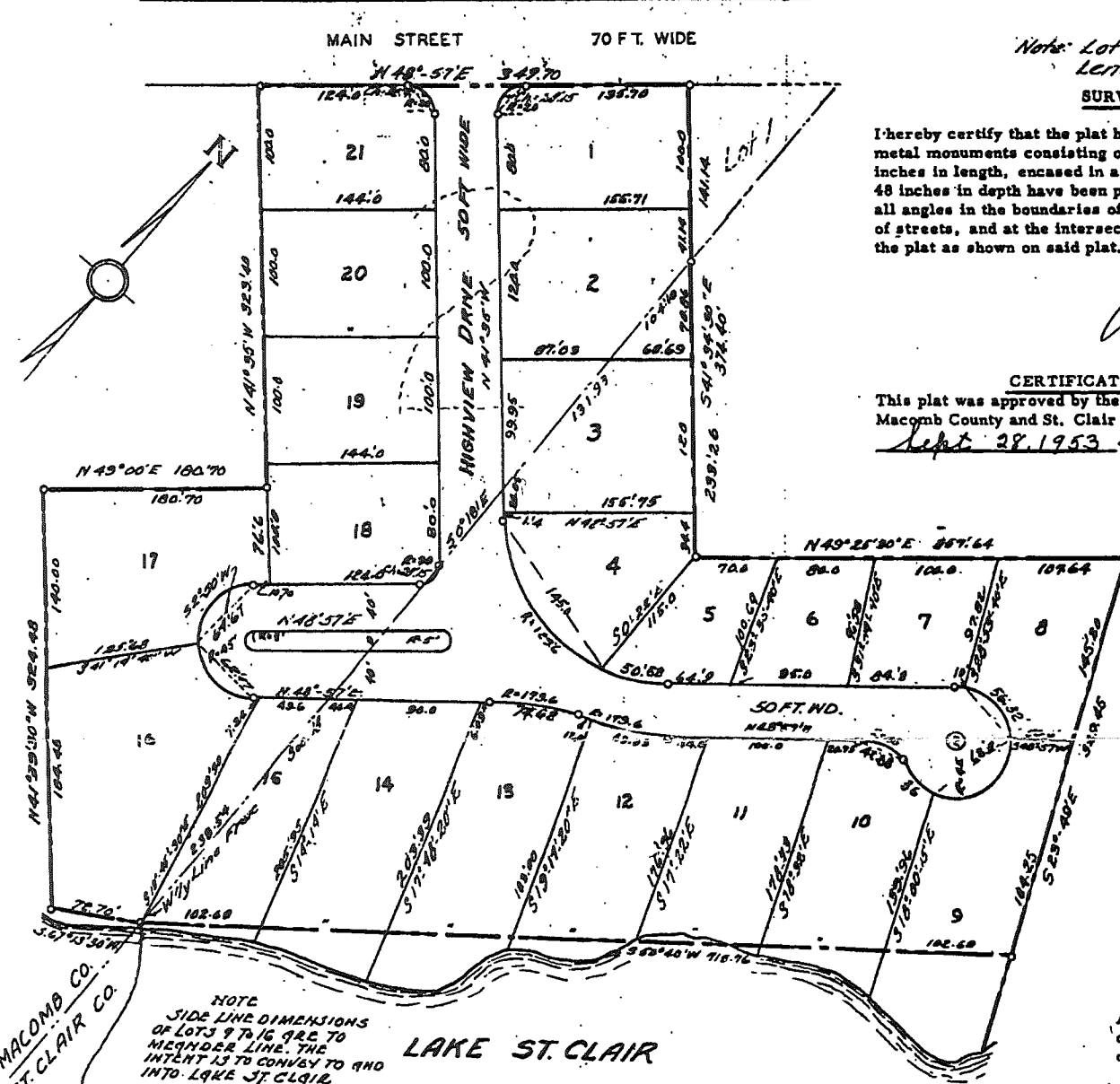
Oct 22 11 13 AM '53

SCALE: 1" = 80'



Note: All dimensions are in feet & decimals thereof.

WALTER J. LEHNER & SONS
CIVIL ENGINEERING & SURVEYING
LAWYERS BLDG. MT. CLEMENS, MICH.



Note: Lot dimensions are chord lengths of curves.

SURVEYOR'S CERTIFICATE

I hereby certify that the plat hereon delineated is a correct one and that permanent metal monuments consisting of bars not less than one-half inch in diameter and 48 inches in length, encased in a concrete cylinder at least 4 inches in diameter and 48 inches in depth have been placed at points marked thus (O) as thereon shown at all angles in the boundaries of the land platted, at all the intersections of the lines of streets, and at the intersections of the lines of streets with the boundaries of the plat as shown on said plat.

John D. Lehner
John D. Lehner,
Registered Land Surveyor,
No. 5787

CERTIFICATE OF MUNICIPAL APPROVAL

This plat was approved by the City Commission of the City of New Baltimore, of Macomb County and St. Clair County, Michigan, at a meeting held Sept 28, 1953.

Grace C. Balfour
Grace C. Balfour - Clerk.

CERTIFICATE OF APPROVAL BY COUNTY BOARD

This plat was approved on the 9th day of October, 1953, by the Macomb County Plat Board.

Aaron Burr
Aaron Burr - Register of Deeds
Albert A. Wagner
Albert A. Wagner - County Clerk
Lynn Whalen
Lynn Whalen - County Treasurer
Frank E. Lohr
Frank E. Lohr - County Drain Commissioner

CERTIFICATE OF APPROVAL BY THE COUNTY PLAT BOARD

Approved by the County Plat Board of St. Clair County, Michigan, this 8th day of October, 1953.

Walter B. Treleven
Walter B. Treleven - Chairman
Walter B. Treleven
Walter B. Treleven - Secretary
Ray S. Richards
Ray S. Richards - Member
Herbert E. Stern
Herbert E. Stern - Member

NOTE: SIDE LINE DIMENSIONS OF LOTS 9 TO 16 ARE TO MEASURE LINE. THE INTENT IS TO CONVEY TO AND INTO LAKE ST. CLAIR.
POINT OF BEGINNING Intersection of West Line of Frac. Sec. 18 T 3 N R 15 E & Bank of Lake St. Clair

DEDICATION

KNOW ALL MEN BY THESE PRESENTS, That I, Frank J. Smith, Assessor of City of New Baltimore, Macomb County and St. Clair County, State of Michigan, by virtue of authority in me vested by Section 51, Act 172, of 1929, having been duly authorized by the City Council have caused the land described in the annexed plat to be surveyed, laid out, and platted, to be known as "Assessor's Plat Highview Sub" of Lot 2 of Assessor's Plat No. 1 of part of Frac. Sec. 13, T 3 N R 14 E., Macomb Co. and Part of Frac. Sec. 18, T 3 N R 15 E, St. Clair Co., City of New Baltimore, Mich., and that the streets as shown on said plat are now being used for such purposes.

Witnesses:

Mayne Allen
Mayne Allen

Rosemary Vernier
Rosemary Vernier

Frank J. Smith
Frank J. Smith, Assessor of the City of New Baltimore, Michigan

ACKNOWLEDGEMENT

STATE OF MICHIGAN, County of Macomb

On this 25th day of Sept, A.D. 1953, before me, a Notary Public in and for said county, personally came the above named Frank J. Smith, Assessor of the City of New Baltimore, Michigan, known to me to be the person who executed the above dedication and acknowledged the same to be his free act and deed as such assessor.

My Commission expires:

July 7, 1954

Gene C. Kojima
Notary Public in for Macomb County, Michigan
Gene C. Kojima

DESCRIPTION OF LAND PLATTED

The land embraced in the annexed plat of "Assessor's Plat Highview Sub" of Lot 2 of Assessor's Plat No. 1 of Part of Frac. Sec. 13, T 3 N R 14 E, Macomb County and Part of Frac. Sec. 18, T 3 N R 15 E, St. Clair County, City of New Baltimore, Michigan, is described as follows: Commencing at the intersection of the West line of Frac. Sec. 18, T 3 N, R 15 E, and the Bank of Lake St. Clair and thence extending along the Bank of Lake St. Clair S. 67°-13'-30" W. 72.70 ft., thence N. 41°-39'-30" W. 324.48 ft., thence N. 49°-00' E. 180.70 ft., thence N. 41°-35' W. 323.40 ft., thence N. 48°-57' E. 349.70 ft., thence S. 41°-34'-30" E. 374.40 ft., thence N. 49°-25'-30" E. 357.64 feet., thence S. 23°-49' E. 329.45 feet, thence along the Bank of Lake St. Clair S. 50°-40' W. 718.76 feet to the point of beginning.

REGISTER'S OFFICE
County of Macomb
Received for Record this 22nd day of October, A.D. 1953 at 11:13 o'clock AM and Recorded in Liber 29 of Plats on Page 12
Walter B. Treleven

29-12
M-6
1953 "A.P. HIGHVIEW SUB"