

**LAND CORNER RECORDATION CERTIFICATE**  
**Filing Requirement of Act 74, Mich. P.A. 1970**

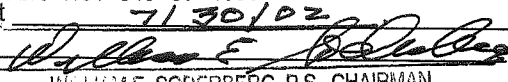
For corners in

CHESTERFIELD TOWNSHIP

MACOMB Located In: Corner Code #  
 (County)

- |                                    |                          |            |
|------------------------------------|--------------------------|------------|
| 1. Public Land Survey              | T <u>3N</u> R <u>14E</u> | <u>L-5</u> |
|                                    | T ___ R ___              | _____      |
|                                    | T ___ R ___              | _____      |
|                                    | T ___ R ___              | _____      |
| 2. Property Controlling in Section | S ___ T ___ R ___        | _____      |
|                                    | S ___ T ___ R ___        | _____      |
| 3. Miscellaneous Property in Sec.  | S ___ T ___ R ___        | _____      |
|                                    | S ___ T ___ R ___        | _____      |

ACCEPTED BY THE MACOMB COUNTY SURVEY PEER GROUP AS THE OFFICIAL CORNER UNDER MICHIGAN PUBLIC ACT 345 OF 1990 AT A MEETING HELD

4. Lot No. \_\_\_\_\_, Recorded Plat 7130/02  
 5. Private Claims \_\_\_\_\_  
  
 WILLIAM E. SODERBERG, P.S., CHAIRMAN

2266005  
**LIBER 12434 PAGE 953**  
 11/08/2002 09:59:36 A.M.  
 MACOMB COUNTY, MI SEAL  
 CARMELLA SABAUGH, REGISTER OF DEEDS

Register of Deeds Stamp & File Number

I, ROBERT H. BIRKETT, in a field survey on July, 2002 do hereby certify that under requirements of P.A. 74, Michigan P.A. of 1970, the corner points mentioned in lines 1 and 2 above were in conformance with regulations and rules therefore as required in the current manual of survey instructions of the United States Department of the Interior, Bureau of Land Management or by a decree of a Court of Law and /or that the corner points mentioned in lines 3, 4 and 5 above were in conformance with the rules of the Michigan Board of Land Surveyors or by a Decree of a Court of Law; established, re-established, monumented, re-monumented, recovered, found as expressed below:

	A	B	C	D	E	F	G	H	I	J	K	L	M
1													
2		6		5		4		3		2		1	
3													
4		7		8		9		10		11		12	
5													
6		18		17		16		15		14		13	
7													
8		19		20		21		22		23		24	
9													
10		30		29		28		27		26		25	
11													
12		31		32		33		34		35		36	
13													

**NOTE: Not more than 2 corners, all in the same town and range, may be recorded on this certificate.**

A. Description of original monument and accessories and/or subsequent restoration:

- L-5 CHESTERFIELD  
 1818, PRESTON GLO, SET WOOD POST, GENERAL LAND OFFICE FILE NOTES.  
 1995, ROSKELLY No. 10705, SET 1/2" IRON, LCRC L. 6555, P. 771.  
 1995, DUNN No. 30081, FOUND 1/2" IRON, SURVEY L. 6985, P. 379.  
 1997, AMEY No. 34970, SET 1/2" IRON, SURVEY UNRECORDED.  
 1998, AMEY No. 34970, SET 1/2" IRON, LCRC L. 8486, P. 875.

B. Description of corner evidence found and/or method applied in restoring or reestablishing corner:

- L-5 FOUND 1/2" IRON WITH CAP No. 34970  
 RECOVERED TAG No. 10705 EAST FACE 4" POPLAR.  
 RECOVERED TAG No. 10705 SOUTH FACE 8" PINE.



FOLLOWING SUBDIVISIONS VERIFY THE EXISTING LOCATION:

- "BALTIMORE SQUARE SUBDIVISION", ROSKELLY No. 10705, L. 108, P. 15-18 OF PLATS.  
 "AMENDED PLAT OF PART LOT 11, A. ASHLEY'S SR. ADDITION TO THE CITY OF ASHLEY", AMEY No. 34970, L. 137, P. 11 OF PLATS.  
 "AMENDED PLAT OF PART LOT 10, A. ASHLEY'S SR. ADDITION TO THE CITY OF ASHLEY", AMEY No. 34970, L. 137, P. 12 OF PLATS.  
 "PRESIDENTIAL VILLAGE SUBDIVISION", AMEY No. 34970, L. 136, P.15-21 OF PLATS.

**FIELD MEASUREMENTS**

L-5 TO INTERSECTION SOUTH LINE SECTION 12 WITH PC 614 : 4078.45' REMON (2002), 4078.35' AMEY (1997), 61.16 CHAINS (4036.56') GLO (1818).

C. Description of monument for corner and accessories established to perpetuate locating the position of the corner:

- L-5 REPLACED 1/2" IRON WITH CAP No. 34970 WITH 1/2" RE-BAR, ENCASED IN 4" OF CONCRETE, CAPPED WITH AN ALUMINUM CAP STAMPED "MACOMB COUNTY MONUMENT, MI ACT 345, L-5, 41094."

- 60° - 24.00' - SET NAIL WITH REMON TAG AT SCAR IN EAST FACE 6" POPLAR.  
 230° - 52.61' - SET NAIL WITH REMON TAG IN WEST FACE 6" MULTIPLE MAPLE.  
 290° - 65.68' - SET NAIL WITH REMON TAG AT SCAR IN SOUTH FACE 10" PINE.  
 350° - 62.28' - SET NAIL WITH REMON TAG IN SOUTH FACE 12" PINE.

THE SELECTED LOCATION IS ACCEPTED BY ME AND IS GENERALLY ACCEPTED BY PROFESSIONAL SURVEYORS AS THE BEST AVAILABLE EVIDENCE OF THE POSITION OF THE ORIGINAL CORNER.

Signed by Robert H. Birkett Date 10/25/02  
 Surveyor's Michigan License No. 41094











223-022

2002 Macomb Remon

6-26-02

BMS, JES

L-5 chesterfield

Found 1/2" iron with cap #34970

Recovered 2 witnesses  
got sounds on tree but  
could not see.

60° 24.00'

Set P.K. nail with remon  
witness tag in 6" poplar  
in E. face

230° 52.61'

Set P.K. nail with remon  
witness tag in west face  
6" multiple maple

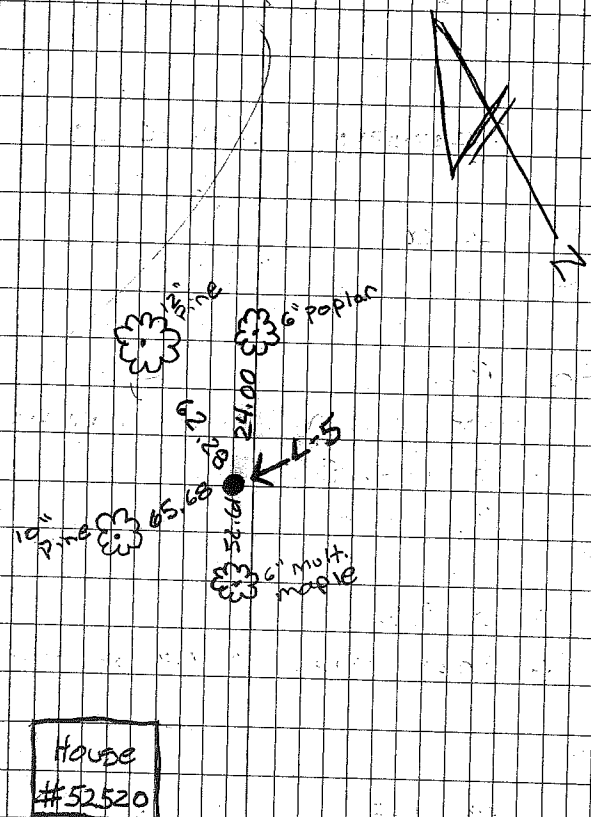
290° 65.68'

Set P.K. with remon tag  
in S. face 10" Pine

350° 62.28'

Set P.K. with remon tag in  
S. face 12" Pine

No 1937 27



# CERTIFICATE OF SURVEY

**METCO SERVICES, INC.**  
 12504 STEPHENS WARREN, MI 48089  
 PHONE NUMBER (810) 755-5770  
 FAX NUMBER (810) 755-5774



**LEGEND**

- FOUND IRON
- S.I.R. SET IRON ROD
- F.I.R. FOUND IRON ROD

EAST 1/4 CORNER FRACTIONAL SECTION 12  
 FOUND AXLE SHAFT IN MONUMENT BOX  
 WITNESSES:

- 1.) N16°E 147.65' FOUND REGULAR NAIL WITH TAG "RLS123" IN WEST FACE OF UTILITY POLE
- 2.) S22°E 70.00' SET PK NAIL IN WEST FACE OF UTILITY POLE
- 3.) N87°W 37.30' FOUND REGULAR NAIL WITH TAG "RLS123" IN SOUTH SIDE OF ABANDONED UTILITY POLE
- 4.) N43°W 62.00' SET PK NAIL IN EAST FACE OF TRIPLE STEM MAPLE

CENTER POST FRACTIONAL SECTION 12  
 FOUND STEEL BAR 1/2" x 18" AS RECORDED IN  
 LIBER 6555, PAGE 771. WITNESSES:

- 1.) NORTH 325.64' PK & TAG #10705 SW FACE OF 40" OAK
- 2.) N89°09'36"E 1325.49' FOUND CAPPED IRON (#15396 & #30076)
- 3.) S12°W 74.31' PK & TAG #10705 IN W FACE OF 4" MAPLE
- 4.) S65°W 16.35' PK & TAG #10705 IN S FACE OF 4" MAPLE

NORTH 1/4 CORNER FRACTIONAL SECTION 12  
 FOUND 1" IRON PIPE AS RECORDED IN  
 LIBER 2409, PAGE 558. WITNESSES:

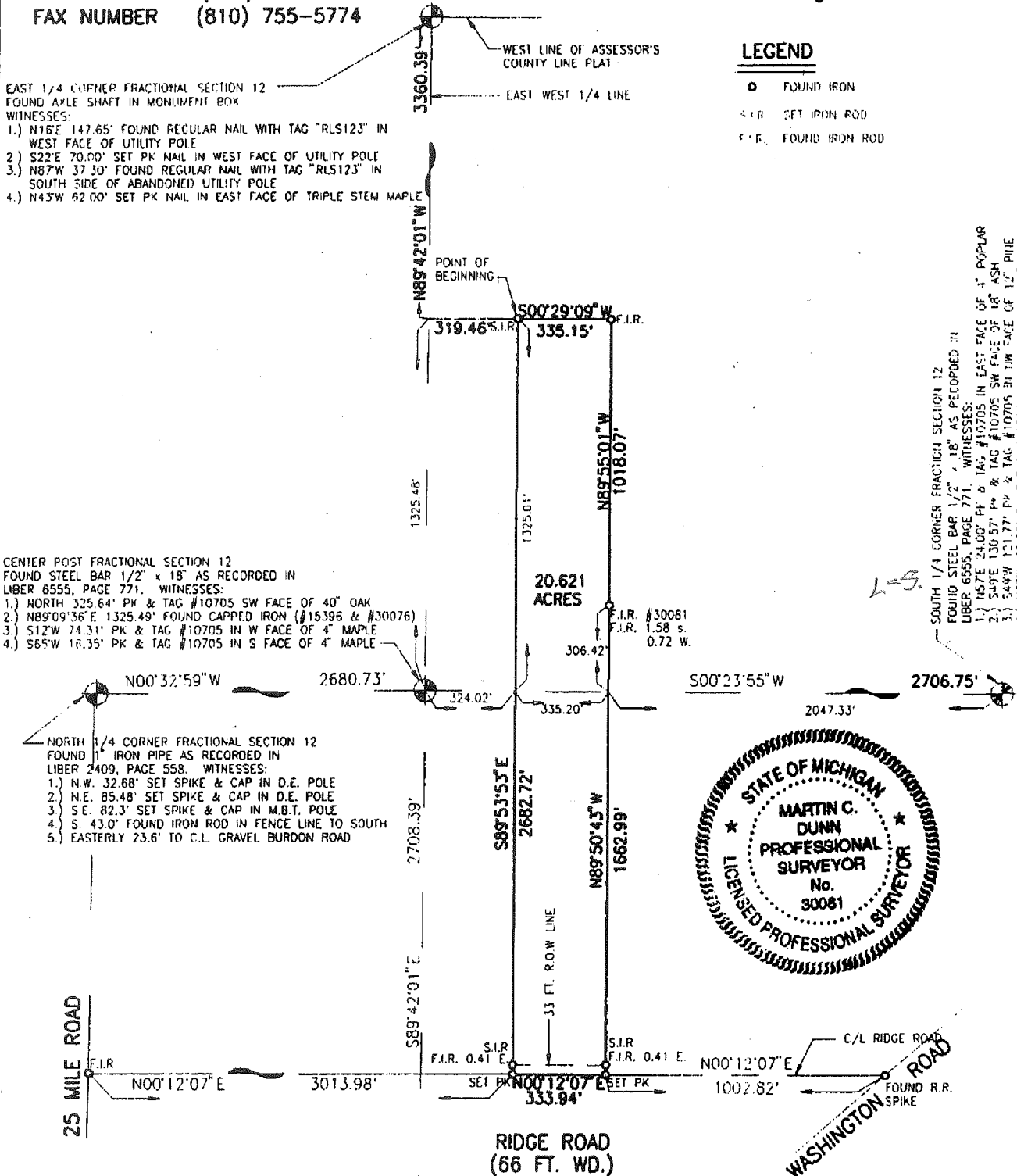
- 1.) N.W. 32.68' SET SPIKE & CAP IN D.E. POLE
- 2.) N.E. 85.48' SET SPIKE & CAP IN D.E. POLE
- 3.) S.E. 82.3' SET SPIKE & CAP IN M.B.T. POLE
- 4.) S 43.0' FOUND IRON ROD IN FENCE LINE TO SOUTH
- 5.) EASTERLY 23.6' TO C.L. GRAVEL BURDON ROAD

WEST 1/4 CORNER FRACTIONAL SECTION 12  
 FOUND 1/2" IRON ROD AS RECORDED IN  
 LIBER 4687, PAGE 432. WITNESSES:

- 1.) WEST 1.45' PK NAIL IN SOUTH FACE OF 36" OAK
- 2.) SOUTH 8.28' PK NAIL IN NORTHWEST FACE OF 36" OAK
- 3.) EAST 54.26' PK NAIL IN NORTH FACE OF 40" OAK
- 4.) S30°E PK NAIL IN WEST FACE OF 12" POPLAR

SOUTH 1/4 CORNER FRACTIONAL SECTION 12  
 FOUND STEEL BAR 1/2" x 18" AS RECORDED IN  
 LIBER 6555, PAGE 771. WITNESSES:

- 1.) N57°E 24.00' PK & TAG #10705 IN EAST FACE OF 1" POPLAR
- 2.) S49°E 130.57' PK & TAG #10705 SW FACE OF 18" ASH
- 3.) S48°W 121.77' PK & TAG #10705 IN W FACE OF 12" PINE
- 4.) N65°W 45.56' PK & TAG #10705 IN E FACE OF 8" PINE



CLIENT: P.C.E.  
 ADDRESS: P.O. BOX 307  
 CITY, STATE & ZIP: ALGONAC, MI 48001  
 CITY/TWP.: NEW BALTIMORE SEC./P.C.: 12 COUNTY: MACOMB  
 DATE: APRIL 25, 1995 DRAWN BY: A. MILLER  
 JOB NO.: 95-018 SHEET NO.: 1 OF 2  
 SCALE: 1" = 500'  
 BOOK NO.: 190 PAGE: 10-13, 15

I hereby certify that I have surveyed and mapped the land above and/or described on 04/01/95 and that the ratio of closure on the unadjusted field observations of such survey was 1/60562 and that all of the requirements of Public Act 132, 1970 have been complied with. Bearings are based on the west line of "Assessor's County Line Plat" of part of fractional sections 7 and 18 PC 614 and PC 627 T.3N., R.15E. City of New Baltimore, St. Clair County, now Macomb County, Michigan recorded in Liber 55 of Plats Page 20, S.C.C.R.

*Martin C. Dunn*  
**MARTIN C. DUNN LICENSED LAND SURVEYOR #30081**

C0339345 LIBER:06985 PAGE:379 09:17A 04/19/1996  
 CARMELLO SABAUGH-MACOMB COUNTY, MI REG/DEEDS

90

5-7



**LAND CORNER RECORDATION CERTIFICATE**  
 Filing Requirement of Act 74, Mich. P.A. 1970

For corners in

<u>Macomb</u> (County)	Located In:	Corner Code #
1. Public Land Survey	<u>T 3 N R 14 E</u>	<u>L-5</u>
	T ___ R ___	_____
	T ___ R ___	_____
	T ___ R ___	_____
2. Property Controlling in Section	S ___ T ___ R ___	_____
	S ___ T ___ R ___	_____
3. Miscellaneous Property in Sec.	S ___ T ___ R ___	_____
	S ___ T ___ R ___	_____

Register of Deeds Stamp & File Number

4. Lot No. \_\_\_\_\_, Recorded Plat \_\_\_\_\_  
 5. Private Claims \_\_\_\_\_

I, Craig P. Arney, in a field survey on February 4, 1998 do hereby certify that under requirements of P.A. 74, Michigan P.A. of 1970, the corner points mentioned in lines 1 and 2 above were in conformance with regulations and rules therefore as required in the current manual of survey instructions of the United States Department of the Interior, Bureau of Land Management or by a decree of a Court of Law and/or that the corner points mentioned in lines 3, 4 and 5 above were in conformance with the rules of the Michigan Board of Land Surveyors or by a Decree of a Court of Law; established, re-established, monumented, re-monumented, recovered, found as expressed below:

1	A	B	C	D	E	F	G	H	I	J	K	L	M
2		6		5		4		3		2		1	
3													
4		7		8		9		10		11		12	
5													
6		18		17		16		15		14		13	
7													
8		19		20		21		22		23		24	
9													
10		30		29		28		27		26		25	
11													
12		31		32		33		34		35		36	
13													

NOTE: Not more than 2 corners, all in the same town and range, may be recorded on this certificate.

A. Description of original monument and accessories and/or subsequent restoration:

1995 Certificate of Survey - Martin Dunn Found 1/2' steel bar

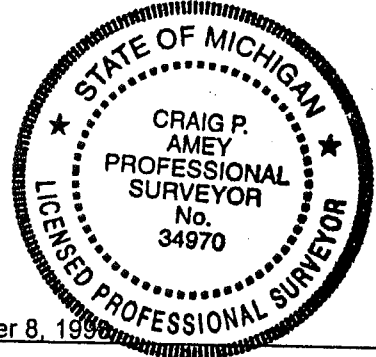
C0839928 LIBER:08486 PAGE:875 02:40P 12/09/1998  
 CARNELLA SABAUGH-MACOMB COUNTY, MI REG/DEEDS

B. Description of corner evidence found and/or method applied in restoring or reestablishing corner:

1/2" steel bar no longer exists. The corner location was determined by using the distances from the existing witnesses and setting a 1/2" iron.

C. Description of monument for corner and accessories established to perpetuate locating the position of the corner:

Set 1/2" iron with yellow cap #34970  
 0° 325.45 Found PK and tag # 10705 in the southwest face of a 42" oak.  
 245° 16.13 Set PK and tag # 34970 in the northeast face of a 4" box elder.  
 185° 74.74 Set PK and tag # 34970 in the east face of a twin 4" box elder.  
 310° 24.38 Set 1/2" iron and traverse cap # 30092 at westerly top of bank.



Signed by Craig P. Arney Date December 8, 1998  
 Surveyor's Michigan License No. 34970

**LAND CORNER RECORDATION CERTIFICATE**  
 Filing Requirement of Act 74, Mich. P.A. 1970

For corners in

Macomb (County) Located In: CHESTERFIELD Corner Code #

1. Public Land Survey	T	<u>3N</u>	R	<u>14E</u>	<u>L-4</u>
	T	<u>3N</u>	R	<u>14E</u>	<u>L-5</u>
	T		R		
	T		R		
2. Property Controlling in Section	S		T		
	S		T		
3. Miscellaneous Property in Sec.	S		T		
	S		T		

Register of Deeds Stamp & File Number

4. Lot No. \_\_\_\_\_, Recorded Plat \_\_\_\_\_  
 5. Private Claims \_\_\_\_\_

I, William L Roskelly, in a field survey on January 13, 19 95, do hereby certify that under requirements of P.A. 74, Michigan P.A. of 1970, the corner points mentioned in lines 1 and 2 above were in conformance with regulations and rules therefore as required in the current manual of survey instructions of the United States Department of the Interior, Bureau of Land Management or by a decree of a Court of Law and/or that the corner points mentioned in lines 3, 4 and 5 above were in conformance with the rules of the Michigan Board of Land Surveyors or by a Decree of a Court of Law; established, re-established, monumented, re-monumented, recovered, found as expressed below:

**NOTE: Not more than 4 corners, all in the same town and range, may be recorded on this certificate.**

A. Description of original monument and accessories and/or subsequent restoration:

B. Description of corner evidence found and/or method applied in restoring or reestablishing corner:

C. Description of monument for corner and accessories established to perpetuate locating the position of the corner:

L-4: Center Section 12  
 Set Steel Bar 1/2" x 18"

Witnesses:  
 Set P.K. & Tag (10705) S.W. face 40" Oak due North 325.64'  
 Found Cap. Iron (#15396 & 30076) N. 89 degrees 09 minutes 36 seconds East 1325.49'  
 Set P.K. & Tag (10705) W. face 4" Maple South 12° W. 16.35'  
 Set P.K. & Tag (10705) S. face 4" Maple South 65° W. 16.35'

L-5: South 1/4 Corner Section 12  
 Set Steel Bar 1/2 x 18"

Witnesses:  
 Set P.K. & Tag (10705) East face 4" Poplar N. 57° E. 24.00'  
 Set P.K. & Tag (10705) S.W. face 18" Ash S. 49° E. 130.57'  
 Set P.K. & Tag (10705) N.W. face 12" Pine S. 49° W. 121.77'  
 Set P.K. & Tag (10705) S. face 8" Pine N. 65° W. 65.68'

Signed by William L Roskelly  
 Surveyor's Michigan License No. 10705

Date January 19, 1995

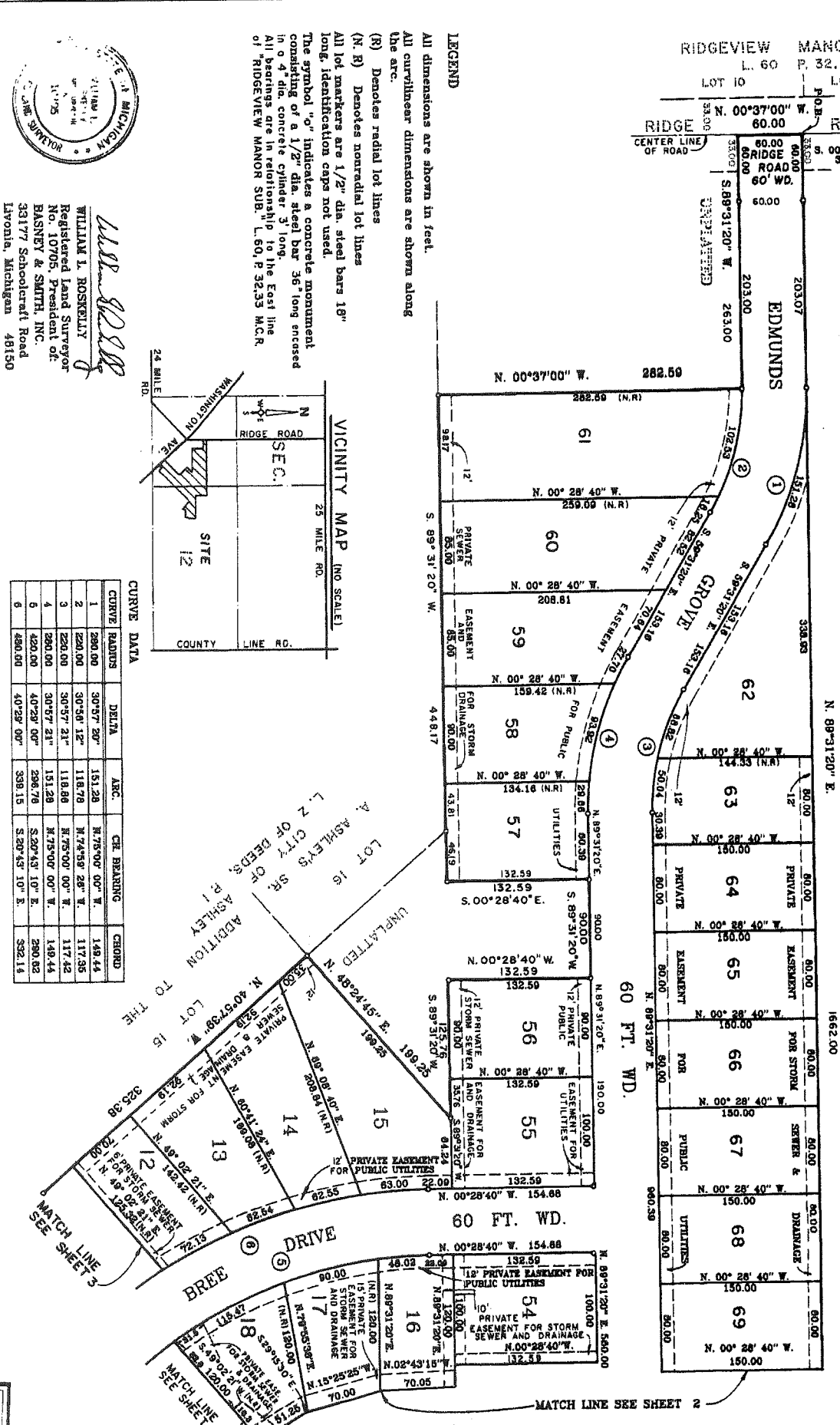
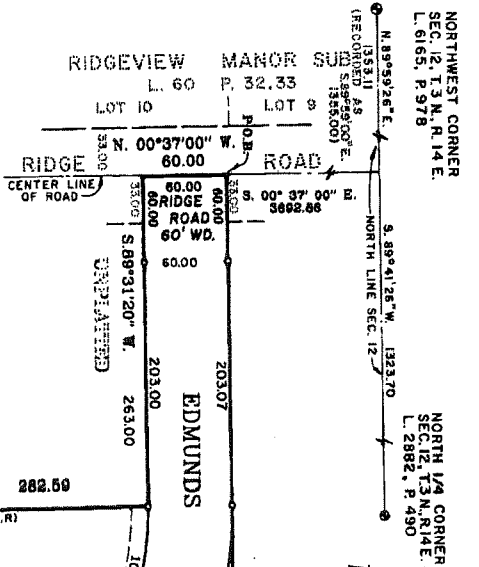
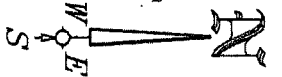


	A	B	C	D	E	F	G	H	I	J	K	L	M
2	6	5	4	3	2	1							
3													
4	7	8	9	10	11								
5													
6	18	17	16	15	14	13							
7													
8	19	20	21	22	23	24							
9													
10	30	29	28	27	26	25							
11													
12	31	32	33	34	35	36							
13													

# BALTIMORE SQUARE SUBDIVISION

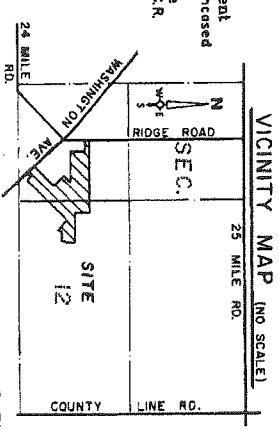
OF PART OF THE S.E. 1/4 & S.W. 1/4 OF SEC. 12, T. 3 N., R. 14 E.,  
CITY OF NEW BALTIMORE, MACOMB COUNTY, MICHIGAN

SHEET 1 OF 4 SHEETS



**LEGEND**

All dimensions are shown in feet.  
All curvilinear dimensions are shown along the arc.  
(R) Denotes radial lot lines  
(N.R) Denotes nonradial lot lines  
All lot markers are 1/2" dia. steel bars 18" long, identification caps not used.  
The symbol "g" indicates a concrete monument consisting of a 1/2" dia. steel bar 36" long encased in a 4" dia. concrete cylinder 3' long.  
All bearings are in relationship to the East line of "RIDGEVIEW MANOR SUB. L. 60, P. 32.33 M.C.R."



*William L. Roskelley*  
**WILLIAM L. ROSKELLEY**  
 Registered Land Surveyor  
 No. 10705, President of  
**BASNEY & SMITH, INC.**  
 33177 Schoolcraft Road  
 Livonia, Michigan 48150

**CURVE DATA**

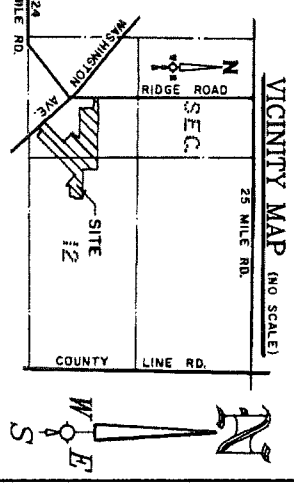
CURVE RADIUS	DELTA	ARC.	CH. BEARING	CHORD
290.00	30°57'20"	151.28	N.75°00'00" W.	149.44
220.00	30°57'12"	118.79	N.74°59'28" W.	117.35
220.00	30°57'21"	118.86	N.75°00'00" W.	117.42
290.00	30°57'21"	151.29	N.75°00'00" W.	149.44
420.00	40°29'00"	298.78	S.20°43'10" E.	290.82
420.00	40°29'00"	338.15	S.20°43'10" E.	332.14

063136

# BALTIMORE SQUARE SUBDIVISION

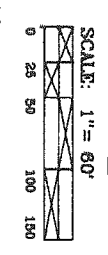
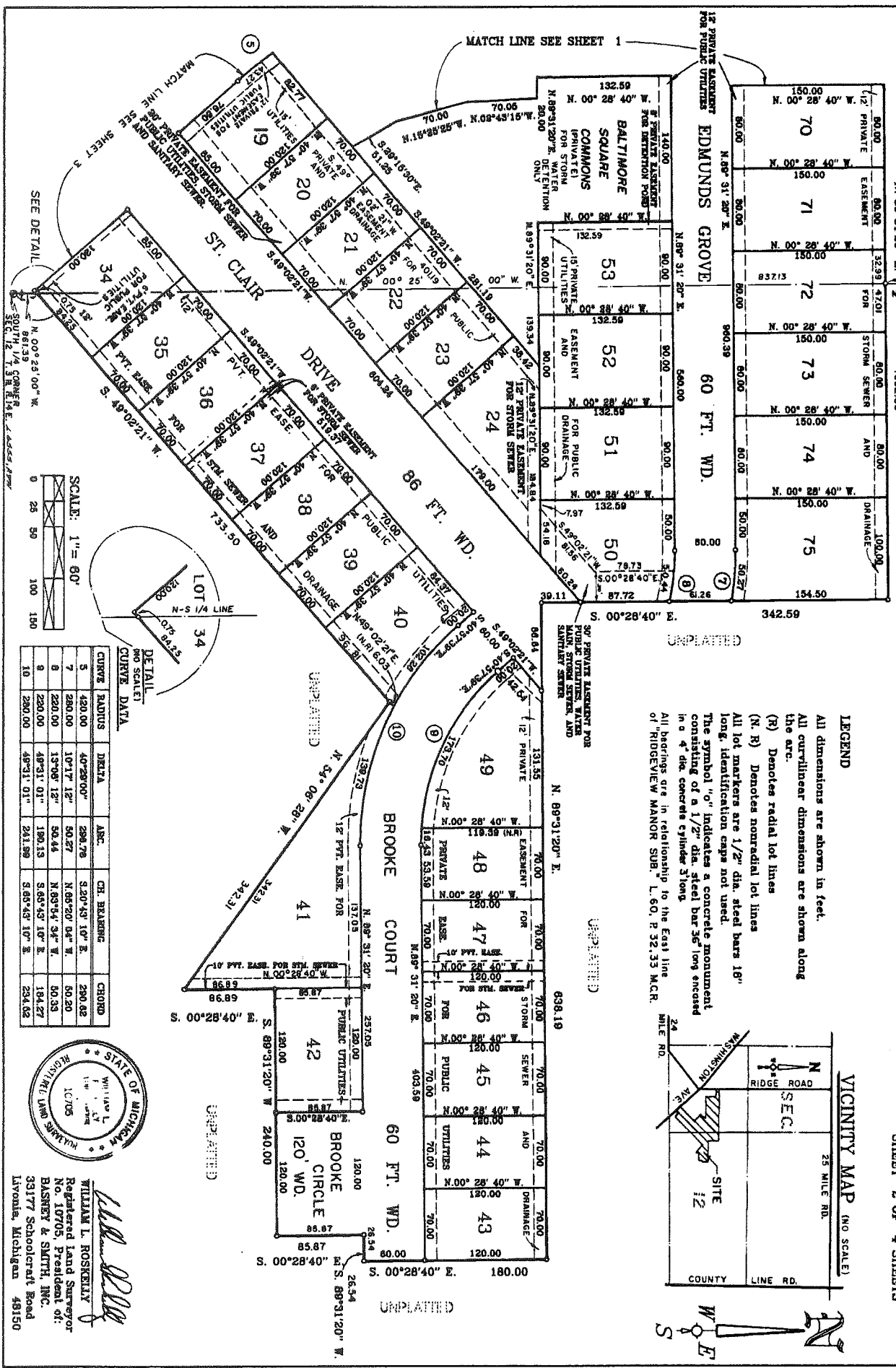
OF PART OF THE S. E. 1/4 & SW. 1/4 OF SEC. 12, T. 3 N., R. 14 E.,  
CITY OF NEW BALTIMORE, MACOMB COUNTY, MICHIGAN

SHEET 2 OF 4 SHEETS



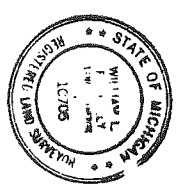
**LEGEND**

All dimensions are shown in feet.  
All curvilinear dimensions are shown along the arc.  
(R) Denotes radial lot lines  
(N, R) Denotes nonradial lot lines  
All lot markers are 1/2" dia. steel bars 18" long. Identification caps not used.  
The symbol "o" indicates a concrete monument consisting of a 1/2" dia. steel bar 36" long encased in a 4" dia. concrete cylinder 3' long.  
All bearings are in relationship to the East line of RIDGEVIEW MANOR SUB. L. 60, P. 32, 33 M.C.R.



**DETAILS**  
CURVE DATA

CURVE	RADIUS	DATA	ARC	CH. BEARING	CHORD
5	450.00	40°28'00"	298.78	S.20°43'18" E.	290.82
7	280.00	10°17'12"	50.27	N.85°20'04" W.	50.20
8	220.00	13°09'12"	50.44	N.83°54'34" W.	50.35
9	220.00	48°31'01"	128.13	S.65°43'10" E.	194.27
10	220.00	48°31'01"	241.99	S.65°43'10" E.	294.62



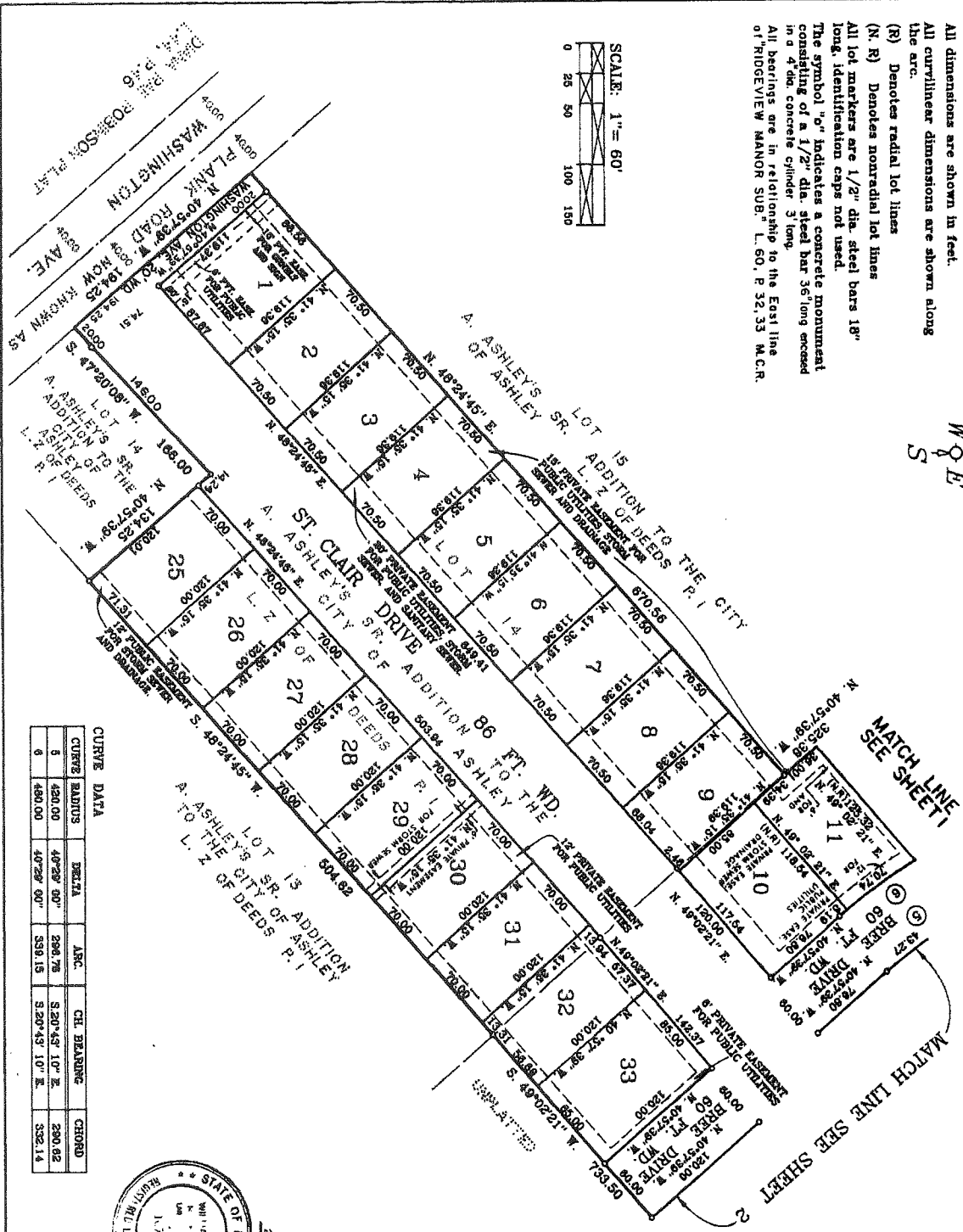
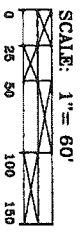
**WILLIAM L. ROSKELLEY**  
Registered Land Surveyor  
No. 10705, President of:  
**BARNETT & SMITH, INC.**  
33177 Schoolcraft Road  
Livonia, Michigan 48150

**BALTIMORE SQUARE SUBDIVISION**  
 OF PART OF THE SE1/4 SW1/4 OF SEC. 12, T. 3 N., R. 14 E.,  
 CITY OF NEW BALTIMORE, MACOMB COUNTY, MICHIGAN

SHEET 3 OF 4 SHEETS

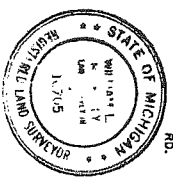
**LEGEND**

All dimensions are shown in feet.  
 All curvilinear dimensions are shown along the arc.  
 (R) Denotes radial lot lines  
 (N, R) Denotes nonradial lot lines  
 All lot markers are 1/2" dia. steel bars 18" long, identification caps not used.  
 The symbol "o" indicates a concrete monument consisting of a 1/2" dia. steel bar 36" long encased in a 4" dia. concrete cylinder 3' long.  
 All bearings are in relationship to the East line of "RIDGEVIEW MANOR SUB." L. 60, P. 32.33 M.C.R.

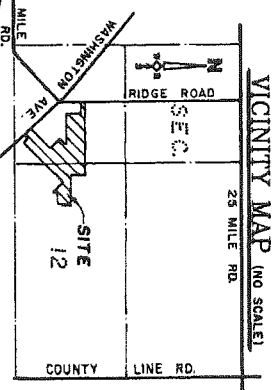


**CURVE DATA**

CURVE RADII	DELTA	ARC.	CH. BEARING	CHORD
5	40°29' 00"	598.79	S 20° 43' 10" E.	290.02
6	40°29' 00"	598.15	S 20° 43' 10" E.	332.14



*William L. Roskelly*  
**WILLIAM L. ROSKELLY**  
 Registered Land Surveyor  
 No. 10705, President of  
 BASNEY & SMITH, INC.  
 33177 Schoolcraft Road  
 Livonia, Michigan 48150



CERTIFIED TRUE COPY OF  
 RECORDED PLAT  
 BY DEPARTMENT OF COMMERCE  
 by *Michael J. Dwyer*  
 Raymond H. Dyer, P.S.  
 Manager  
 Supervision Control Unit  
 Date *March 7, 1967*





AMENDED PLAT OF PART OF LOT 11,  
**A. ASHLEY'S SR. ADDITION TO THE CITY OF ASHLEY**

REGISTER # C0973052

Liber 137 Page 11

PART OF THE SOUTHEAST QUARTER OF FRACTIONAL SECTION 12, AND THE  
 NORTHWEST QUARTER OF FRACTIONAL SECTION 13, TOWN 3 NORTH,  
 RANGE 14 EAST, CITY OF NEW BALTIMORE, MACOMB COUNTY, MICHIGAN

I, CARIELLA SABAUGH, CLERK OF THE COUNTY OF MACOMB, DO HEREBY CERTIFY THAT THE AMENDED PLAT OF PART OF LOT 11 OF A. ASHLEY'S SR. ADDITION TO THE CITY OF ASHLEY, PART OF THE NORTHWEST QUARTER OF FRACTIONAL SECTION 13, TOWN 3 NORTH, RANGE 14 EAST, CITY OF NEW BALTIMORE, MACOMB COUNTY, MICHIGAN, IS A TRUE AND EXACT COPY OF THAT PART OF THE PLAT AS ALIENED BY THE ORDER IN THE MATTER OF TRIMARR, INC., A MICHIGAN CORPORATION, PETITIONER, WHICH WAS ENTERED BY CIRCUIT COURT JUDGE MARY CHRZANOWSKI IN THE CIRCUIT COURT FOR THE COUNTY OF MACOMB, STATE OF MICHIGAN, IN TESTIMONY WHEREOF, I HAVE HERETO SET MY HAND AND OFFICIAL SEAL IN THE COUNTY OF MACOMB, STATE OF MICHIGAN, THIS 21<sup>ST</sup> DAY OF MAY, 1999.

CIRCUIT COURT FILE NO. 98-02460-CH

*Carrella Sabaugh*  
 CARIELLA SABAUGH, COUNTY CLERK  
 REGISTER OF DEEDS

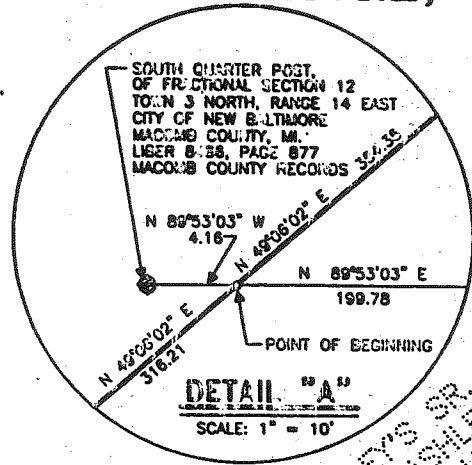
I, CRAIG P. AMEY, SURVEYOR DO HEREBY CERTIFY THAT THE AMENDED PLAT OF PART OF LOT 11 OF A. ASHLEY'S SR. ADDITION TO THE CITY OF ASHLEY, PART OF THE NORTHWEST QUARTER OF FRACTIONAL SECTION 13, TOWN 3 NORTH, RANGE 14 EAST, CITY OF NEW BALTIMORE, MACOMB COUNTY, MICHIGAN, IS A TRUE AND EXACT COPY OF THAT PART OF THE PLAT AS ALIENED BY THE ORDER IN THE MATTER OF TRIMARR, INC., A MICHIGAN CORPORATION, PETITIONER, WHICH WAS ENTERED BY CIRCUIT COURT JUDGE MARY CHRZANOWSKI, IN THE CIRCUIT COURT FOR THE COUNTY OF MACOMB, STATE OF MICHIGAN, IN TESTIMONY WHEREOF, I HAVE HERETO SET MY HAND AND OFFICIAL SEAL IN THE COUNTY OF MACOMB, STATE OF MICHIGAN, THIS 17<sup>TH</sup> DAY OF MAY, 1999.

CIRCUIT COURT FILE NO. 98-02460-CH

ANDERSON, ECKSTEIN AND WESTRICK, INC.

CRAIG P. AMEY, P.S. 34970

SHELBY W. MONEY, P.S. 30092

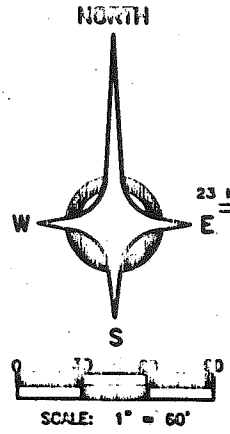


SOUTH QUARTER POST,  
 OF FRACTIONAL SECTION 12  
 TOWN 3 NORTH, RANGE 14 EAST  
 CITY OF NEW BALTIMORE,  
 MACOMB COUNTY, MI.  
 LIBER 8486, PAGE 877  
 MACOMB COUNTY RECORDS

A. ASHLEY'S SR. ADDITION TO THE  
 CITY OF ASHLEY, LIBER 2, PAGE 1  
 MACOMB COUNTY RECORDS

WESTERLY LINE OF  
 PRESIDENTIAL VILLAGE  
 SUBDIVISION, LIBER 136,  
 PAGES 15-21

PRESIDENTIAL VILLAGE SUBDIVISION  
 LIBER 136, PAGES 15-21  
 MACOMB COUNTY RECORDS



LOCATION MAP  
 NOT TO SCALE

INTERSECTION OF THE SOUTH LINE  
 OF FRACTIONAL SECTION 12 AND  
 THE SOUTHWEST LINE OF  
 PRIVATE CLAIM NO. 614  
 LIBER 8486, PAGE 877  
 MACOMB COUNTY RECORDS

I, CRAIG P. AMEY, SURVEYOR, CERTIFY  
 THAT I HAVE SURVEYED, DIVIDED AND MAPPED THE LAND SHOWN ON THIS PLAT  
 DESCRIBED AS FOLLOWS: AMENDED PLAT OF PART OF LOT 11, A. ASHLEY'S SR.  
 ADDITION TO THE CITY OF ASHLEY, IN PART OF THE SOUTHEAST QUARTER OF  
 FRACTIONAL SECTION 12, AND THE NORTHWEST QUARTER OF FRACTIONAL SECTION 13,  
 TOWN 3 NORTH, RANGE 14 EAST, CITY OF NEW BALTIMORE, MACOMB COUNTY,  
 MICHIGAN BEING DESCRIBED AS:

BEGINNING ON THE SOUTH LINE OF FRACTIONAL SECTION 12 NORTH 89 DEGREES 53 MINUTES 03 SECONDS EAST 4.16 FEET FROM THE SOUTH QUARTER POST OF FRACTIONAL SECTION 12; THENCE NORTH 49 DEGREES 06 MINUTES 02 SECONDS EAST 354.35 FEET ALONG THE NORTHEASTERLY LINE OF LOT 11 OF A. ASHLEY'S SR. ADDITION TO THE CITY OF ASHLEY TO THE NORTHEASTERLY LINE OF LOT 11 OF A. ASHLEY'S SR. ADDITION TO THE CITY OF ASHLEY AND THE WESTERLY LINE OF PRESIDENTIAL VILLAGE SUBDIVISION, AS RECORDED IN LIBER 136 OF PLATS, PAGES 15 THRU 21, THENCE SOUTH 40 DEGREES 53 MINUTES 58 SECONDS EAST 130.50 FEET ALONG THE NORTHEASTERLY LINE OF A. ASHLEY'S SR. ADDITION TO THE CITY OF ASHLEY AND THE WESTERLY LINE OF PRESIDENTIAL VILLAGE SUBDIVISION; THENCE SOUTH 49 DEGREES 06 MINUTES 02 SECONDS WEST 670.56 FEET ALONG THE WESTERLY LINE OF PRESIDENTIAL VILLAGE SUBDIVISION TO THE NORTHEASTERLY LINE OF WASHINGTON AVENUE (60.00 FEET WIDE); THENCE NORTH 40 DEGREES 53 MINUTES 58 SECONDS WEST 130.50 FEET ALONG THE NORTHEASTERLY LINE OF WASHINGTON AVENUE TO THE NORTHEASTERLY LINE OF LOT 11 OF A. ASHLEY'S SR. ADDITION TO THE CITY OF ASHLEY; THENCE NORTH 49 DEGREES 06 MINUTES 02 SECONDS EAST 316.21 FEET ALONG THE NORTHEASTERLY LINE OF LOT 11 OF A. ASHLEY'S SR. ADDITION TO THE CITY OF ASHLEY TO THE POINT OF BEGINNING. CONTAINING 1 LOT NUMBERED 26.

THAT I HAVE MADE SUCH SURVEY AND PLAT BY THE DIRECTION OF THE CIRCUIT COURT FOR THE COUNTY OF MACOMB, MICHIGAN.

THAT SUCH PLAT IS A CORRECT REPRESENTATION OF ALL THE EXTERIOR BOUNDARIES OF THE LAND SURVEYED AND THE SUBDIVISION OF IT.

THAT THE REQUIRED MONUMENTS AND LOT MARKERS HAVE BEEN LOCATED IN THE FIELD, AS REQUIRED BY SECTION 125 OF THE ACT.

THAT THE ACCURACY OF THE SURVEY IS WITHIN THE LIMITS REQUIRED BY SECTION 126 OF THE ACT.

THAT THE BEARINGS SHOWN ON THE PLAT ARE EXPRESSED AS REQUIRED BY SECTION 126 (3) OF THE ACT AND EXPLAINED IN THE LEGEND.

ANDERSON, ECKSTEIN AND WESTRICK, INC.  
 51301 SCHENHERR ROAD  
 SHELBY TOWNSHIP, MICHIGAN 48315  
 (810) 726-1234

*Craig P. Amey*  
 CRAIG P. AMEY, P.S. 34970

5-18-99  
 DATE

QUANDED AND APPROVED  
 DATE June 2, 1999  
 BY DEPARTMENT OF CONSUMER AND INDUSTRY SERVICES  
*Lawrence R. Dyer, P.E.*  
 LAWRENCE R. DYER, P.E.  
 MANAGER  
 SUBDIVISION CONTROL SECTION



**LEGEND**  
 (NR) DENOTES NON-RADIAL LINES.  
 (R) DENOTES RADIAL LINES.

ALL DIMENSIONS ARE IN FEET.

ALL CURVILINEAR DIMENSIONS ARE SHOWN IN CHORD DISTANCES.

4" DIAMETER CONCRETE MONUMENTS 36" LONG WITH 1/2" STEEL BAR ARE INDICATED BY "O".

ALL LOT CORNERS HAVE BEEN MARKED BY 1/2" DIAMETER STEEL RODS, 18" LONG.

RECORDING CERTIFICATE  
 STATE OF MICHIGAN)  
 COUNTY OF MACOMB)



AMENDED PLAT OF PART OF LOT 11,  
**A. ASHLEY'S SR. ADDITION TO THE CITY OF ASHLEY**

REGISTER # C0973052

Liber 137 Page 11

PART OF THE SOUTHEAST QUARTER OF FRACTIONAL SECTION 12, AND THE  
 NORTHWEST QUARTER OF FRACTIONAL SECTION 13, TOWN 3 NORTH,  
 RANGE 14 EAST, CITY OF NEW BALTIMORE, MACOMB COUNTY, MICHIGAN

I, CARIELLA SABAUGH, CLERK OF THE COUNTY OF MACOMB, DO HEREBY CERTIFY THAT THE AMENDED PLAT OF PART OF LOT 11 OF A. ASHLEY'S SR. ADDITION TO THE CITY OF ASHLEY, PART OF THE NORTHWEST QUARTER OF FRACTIONAL SECTION 13, TOWN 3 NORTH, RANGE 14 EAST, CITY OF NEW BALTIMORE, MACOMB COUNTY, MICHIGAN, IS A TRUE AND EXACT COPY OF THAT PART OF THE PLAT AS ALIENED BY THE ORDER IN THE MATTER OF TRILARR, INC., A MICHIGAN CORPORATION, PETITIONER, WHICH WAS ENTERED BY CIRCUIT COURT JUDGE MARY CHRZANOWSKI IN THE CIRCUIT COURT FOR THE COUNTY OF MACOMB, STATE OF MICHIGAN, IN TESTIMONY WHEREOF, I HAVE HERETO SET MY HAND AND OFFICIAL SEAL IN THE COUNTY OF MACOMB, STATE OF MICHIGAN, THIS 21<sup>ST</sup> DAY OF MAY, 1999.

CIRCUIT COURT FILE NO. 98-02460-CH

*Carrella Sabaugh*  
 CARIELLA SABAUGH, COUNTY CLERK  
 REGISTER OF DEEDS

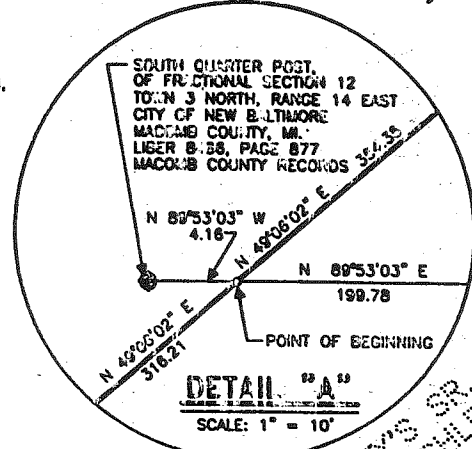
I, CRAIG P. AMEY, SURVEYOR DO HEREBY CERTIFY THAT THE AMENDED PLAT OF PART OF LOT 11 OF A. ASHLEY'S SR. ADDITION TO THE CITY OF ASHLEY, PART OF THE NORTHWEST QUARTER OF FRACTIONAL SECTION 13, TOWN 3 NORTH, RANGE 14 EAST, CITY OF NEW BALTIMORE, MACOMB COUNTY, MICHIGAN, IS A TRUE AND EXACT COPY OF THAT PART OF THE PLAT AS ALIENED BY THE ORDER IN THE MATTER OF TRILARR, INC., A MICHIGAN CORPORATION, PETITIONER, WHICH WAS ENTERED BY CIRCUIT COURT JUDGE MARY CHRZANOWSKI, IN THE CIRCUIT COURT FOR THE COUNTY OF MACOMB, STATE OF MICHIGAN, IN TESTIMONY WHEREOF, I HAVE HERETO SET MY HAND AND OFFICIAL SEAL IN THE COUNTY OF MACOMB, STATE OF MICHIGAN, THIS 17<sup>TH</sup> DAY OF MAY, 1999.

CIRCUIT COURT FILE NO. 98-02460-CH

ANDERSON, ECKSTEIN AND WESTRICK, INC.

CRAIG P. AMEY, P.S. 34970

SHELBY W. MONEY, P.S. 30092



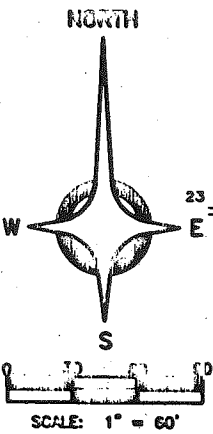
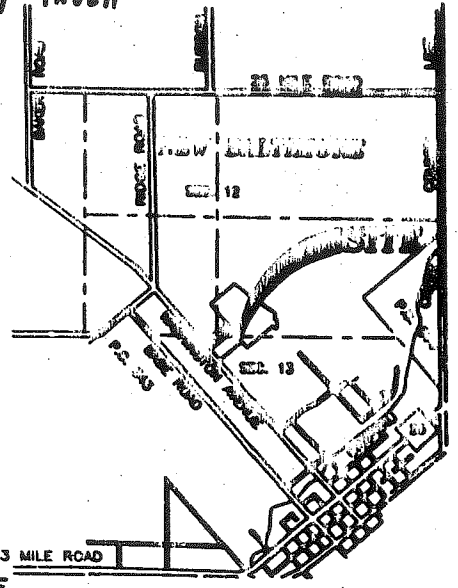
SOUTH QUARTER POST,  
 OF FRACTIONAL SECTION 12  
 TOWN 3 NORTH, RANGE 14 EAST  
 CITY OF NEW BALTIMORE,  
 MACOMB COUNTY, MI.  
 LIBER 8486, PAGE 877  
 MACOMB COUNTY RECORDS

A. ASHLEY'S SR. ADDITION TO THE  
 CITY OF ASHLEY, LIBER 2, PAGE 1  
 MACOMB COUNTY RECORDS

WESTERLY LINE OF  
 PRESIDENTIAL VILLAGE  
 SUBDIVISION, LIBER 136,  
 PAGES 15-21

WESTERLY LINE OF  
 PRESIDENTIAL VILLAGE  
 SUBDIVISION, LIBER 136,  
 PAGES 15-21

SEE DETAIL "A"  
 THIS SHEET



LOCATION MAP  
 NOT TO SCALE

INTERSECTION OF THE SOUTH LINE  
 OF FRACTIONAL SECTION 12 AND  
 THE SOUTHWEST LINE OF  
 PRIVATE CLAIM NO. 614  
 LIBER 8486, PAGE 877  
 MACOMB COUNTY RECORDS

I, CRAIG P. AMEY, SURVEYOR, CERTIFY

THAT I HAVE SURVEYED, DIVIDED AND MAPPED THE LAND SHOWN ON THIS PLAT DESCRIBED AS FOLLOWS: AMENDED PLAT OF PART OF LOT 11, A. ASHLEY'S SR. ADDITION TO THE CITY OF ASHLEY, IN PART OF THE SOUTHEAST QUARTER OF FRACTIONAL SECTION 12, AND THE NORTHWEST QUARTER OF FRACTIONAL SECTION 13, TOWN 3 NORTH, RANGE 14 EAST, CITY OF NEW BALTIMORE, MACOMB COUNTY, MICHIGAN BEING DESCRIBED AS:

BEGINNING ON THE SOUTH LINE OF FRACTIONAL SECTION 12 NORTH 03 DEGREES 53 MINUTES 03 SECONDS EAST 4.16 FEET FROM THE SOUTH QUARTER POST OF FRACTIONAL SECTION 12; THENCE NORTH 49 DEGREES 06 MINUTES 02 SECONDS EAST 354.35 FEET ALONG THE NORTHEASTERLY LINE OF LOT 11 OF A. ASHLEY'S SR. ADDITION TO THE CITY OF ASHLEY AND THE WESTERLY LINE OF PRESIDENTIAL VILLAGE SUBDIVISION, AS RECORDED IN LIBER 136 OF PLATS, PAGES 15 THRU 21, THENCE SOUTH 40 DEGREES 53 MINUTES 58 SECONDS EAST 130.50 FEET ALONG THE NORTHEASTERLY LINE OF A. ASHLEY'S SR. ADDITION TO THE CITY OF ASHLEY AND THE WESTERLY LINE OF PRESIDENTIAL VILLAGE SUBDIVISION; THENCE SOUTH 49 DEGREES 06 MINUTES 02 SECONDS WEST 670.56 FEET ALONG THE WESTERLY LINE OF PRESIDENTIAL VILLAGE SUBDIVISION TO THE NORTHEASTERLY LINE OF WASHINGTON AVENUE (60.00 FEET WIDE); THENCE NORTH 40 DEGREES 53 MINUTES 58 SECONDS WEST 130.50 FEET ALONG THE NORTHEASTERLY LINE OF WASHINGTON AVENUE TO THE NORTHEASTERLY LINE OF LOT 11 OF A. ASHLEY'S SR. ADDITION TO THE CITY OF ASHLEY; THENCE NORTH 49 DEGREES 06 MINUTES 02 SECONDS EAST 316.21 FEET ALONG THE NORTHEASTERLY LINE OF LOT 11 OF A. ASHLEY'S SR. ADDITION TO THE CITY OF ASHLEY TO THE POINT OF BEGINNING. CONTAINING 1 LOT NUMBERED 26.

THAT I HAVE MADE SUCH SURVEY AND PLAT BY THE DIRECTION OF THE CIRCUIT COURT FOR THE COUNTY OF MACOMB, MICHIGAN.

THAT SUCH PLAT IS A CORRECT REPRESENTATION OF ALL THE EXTERIOR BOUNDARIES OF THE LAND SURVEYED AND THE SUBDIVISION OF IT.

THAT THE REQUIRED MONUMENTS AND LOT MARKERS HAVE BEEN LOCATED IN THE FIELD, AS REQUIRED BY SECTION 125 OF THE ACT.

THAT THE ACCURACY OF THE SURVEY IS WITHIN THE LIMITS REQUIRED BY SECTION 126 OF THE ACT.

THAT THE BEARINGS SHOWN ON THE PLAT ARE EXPRESSED AS REQUIRED BY SECTION 126 (3) OF THE ACT AND EXPLAINED IN THE LEGEND.

ANDERSON, ECKSTEIN AND WESTRICK, INC.  
 51301 SCHONHERR ROAD  
 SHELBY TOWNSHIP, MICHIGAN 48315  
 (810) 728-1234

*Craig P. Amey*  
 CRAIG P. AMEY, P.S. 34970

5-17-99  
 DATE

DESIGNED AND APPROVED  
 DATE June 2, 1999  
 BY CRAIG P. AMEY  
 AND INDUSTRY SERVICES  
 BY Raymond R. Dyer, P.E.  
 MANAGER  
 SUBDIVISION CONTROL SECTION



RECORDING CERTIFICATE  
 STATE OF MICHIGAN)  
 COUNTY OF MACOMB)

**LEGEND**  
 (NR) DENOTES NON-RADIAL LINES.  
 (R) DENOTES RADIAL LINES.  
 ALL DIMENSIONS ARE IN FEET.  
 ALL CURVILINEAR DIMENSIONS ARE SHOWN IN CHORD DISTANCES.  
 4" DIAMETER CONCRETE MONUMENTS 36" LONG WITH 1/2" STEEL BAR ARE INDICATED BY 0".  
 ALL LOT CORNERS HAVE BEEN MARKED BY 1/2" DIAMETER STEEL RODS, 18" LONG.

WASHINGTON AVENUE (60 FT. WIDE)  
 PLANK ROAD (20 FT. WIDE)  
 WASHINGTON AVENUE (60 FT. WIDE)  
 HARRISON STREET (60 FT. WIDE)  
 PRESIDENTIAL VILLAGE SUBDIVISION, LIBER 136, MACOMB COUNTY RECORDS, PAGES 15-21  
 A. ASHLEY'S SR. ADDITION TO THE CITY OF ASHLEY, LIBER 2, PAGE 1, MACOMB COUNTY RECORDS

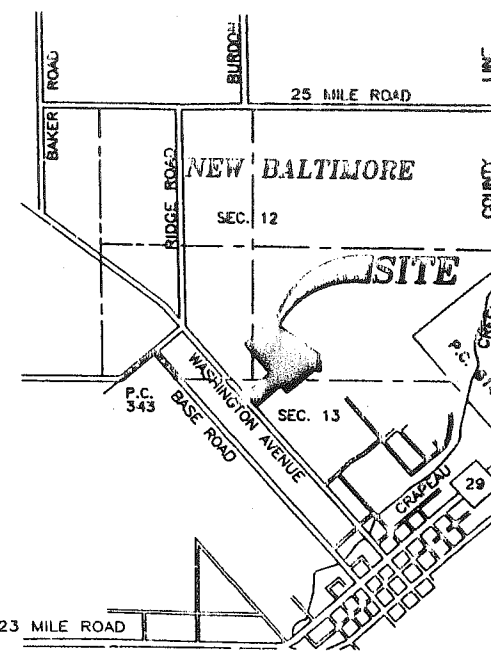


# PRESIDENTIAL VILLAGE SUBDIVISION

PART OF THE SOUTHEAST QUARTER AND PART OF THE SOUTHWEST QUARTER OF FRACTIONAL SECTION 12 AND PART OF THE NORTHWEST QUARTER OF FRACTIONAL SECTION 13, TOWN 3 NORTH, RANGE 14 EAST, CITY OF NEW BALTIMORE, MACOMB COUNTY, MICHIGAN

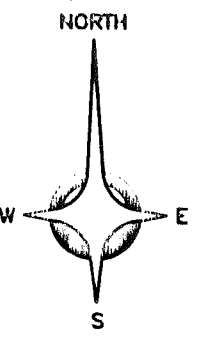
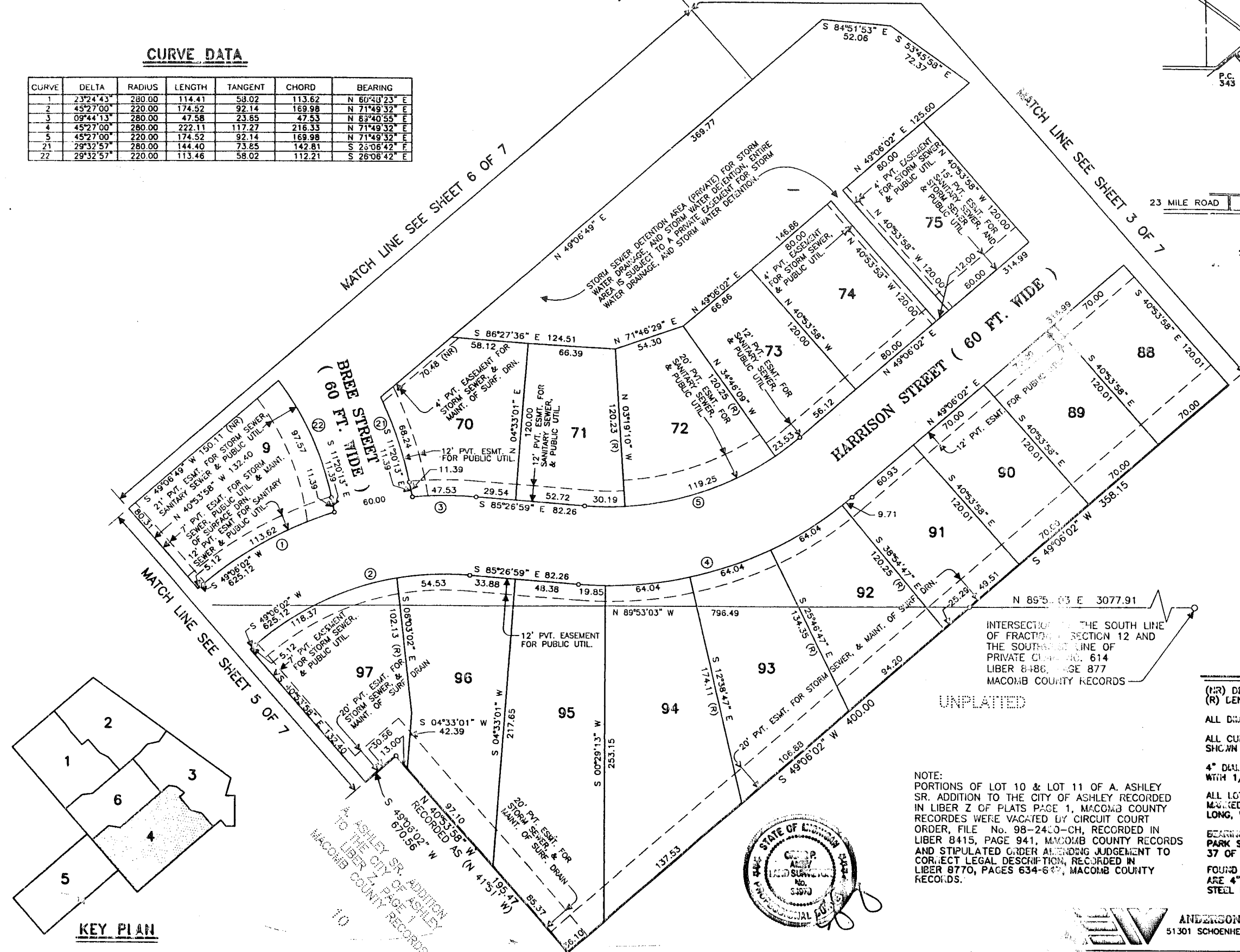
**CURVE DATA**

CURVE	DELTA	RADIUS	LENGTH	TANGENT	CHORD	BEARING
1	23°24'43"	280.00	114.41	58.02	113.62	N 60°40'23" E
2	45°27'00"	220.00	174.52	92.14	169.98	N 71°49'32" E
3	09°44'13"	280.00	47.58	23.65	47.53	N 83°40'55" E
4	45°27'00"	280.00	222.11	117.27	216.33	N 71°49'32" E
5	45°27'00"	220.00	174.52	92.14	169.98	N 71°49'32" E
21	29°32'57"	280.00	144.40	73.85	142.81	S 25°08'42" E
22	29°32'57"	220.00	113.46	58.02	112.21	S 26°08'42" E



**LOCATION MAP**

NOT TO SCALE

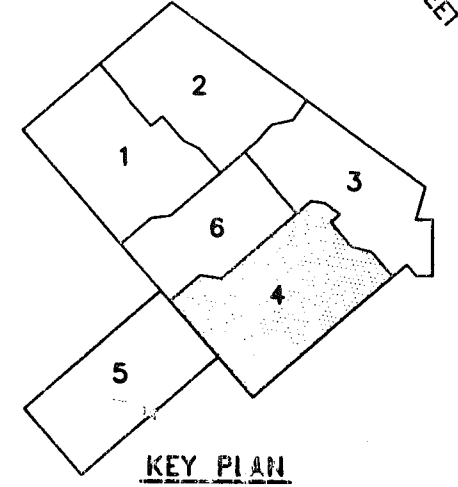
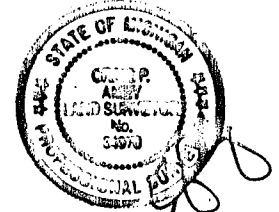


SCALE: 1" = 50'

**LEGEND**

- (NR) DENOTES NON-RADIAL LINES.
- (R) DENOTES RADIAL LINES.
- ALL DIMENSIONS ARE IN FEET.
- ALL CURVILINEAR DIMENSIONS ARE SHOWN IN CHORD DISTANCES.
- 4" DIAMETER CONCRETE MONUMENTS 36" LONG WITH 1/2" STEEL BAR ARE INDICATED BY "o".
- ALL LOT CORNERS AND REF. POINTS HAVE BEEN MARKED BY 1/2" DIAMETER STEEL RODS, 18" LONG, WITH YELLOW PLASTIC CAP No. 34070.
- BEARINGS ARE RELATED TO "SCHMIDT'S ASHLER PARK SUBDIVISION No. 1" AS RECORDED IN L 37 OF PLATS, PAGE 43, MACOMB COUNTY RECORDS.
- FOUND MONUMENTS ARE INDICATED BY "o". ALL ARE 4" DIAMETER CONCRETE 36" LONG WITH STEEL BAR.

NOTE:  
PORTIONS OF LOT 10 & LOT 11 OF A. ASHLER SR. ADDITION TO THE CITY OF ASHLER RECORDED IN LIBER Z OF PLATS PAGE 1, MACOMB COUNTY RECORDS WERE VACATED BY CIRCUIT COURT ORDER, FILE No. 98-2400-CH, RECORDED IN LIBER 8415, PAGE 941, MACOMB COUNTY RECORDS AND STIPULATED ORDER AMENDING JUDGEMENT TO CORRECT LEGAL DESCRIPTION, RECORDED IN LIBER 8770, PAGES 634-640, MACOMB COUNTY RECORDS.



**KEY PLAN**