

10³⁰ a.m.

LAND CORNER RECORDATION CERTIFICATE
Filing Requirement of Act 74, Mich. P.A. 1970
REMONUMENTATION CORNER

For corners in:

MACOMB COUNTY
(County)

Located In: CHESTERFIELD TOWNSHIP Corner Code #

- 1. Public Land Survey T 3N R 14E L-02
2. Property Controlling in Section S T R
3. Miscellaneous Property in Sec. S T R
4. Lot No. Recorded Plat
5. Private Claims

8110254
LIBER 19503 PAGE 228
09/29/2008 08:26:48 A.M.
MACOMB COUNTY, MI SEAL
CARMELLA SABAUGH, REGISTER OF DEEDS

I, DEREK KOSICKI, in a field survey on, May 8, 2008 do hereby certify that under requirements of P.A. 74, Michigan P.A. of 1970, the corner points mentioned in lines 1 and 2 above were in conformance with regulations and rules therefore as required in the current manual of survey instructions of the United States Department of the Interior, Bureau of Land Management or by a decree of a Court of Law and/or that the corner points mentioned in lines 3, 4 and 5 above were in conformance with the rules of the Michigan Board of Land Surveyors or by a Decree of a Court of Law, established, re-established, monumented, re-monumented, recovered, found as expressed below:

NOTE: Not more than 2 corners, all in the same town and range, may be recorded on this certificate.

A. Description of original monument and accessories and/or subsequent restoration:
GLO Survey performed in 1817 by William Preston, D.S. Corner not set - Center of Section 1.

Subsequent Restorations:

- 1 1962 MCRC Witness Record-CGM FIP
2 1973 LCRC-Patterson 17631 L2380. P496 Iron (1 of 4 wit. fnd.)
3 1992 Survey-James 19335 FIB
4 2001 Survey-Soderberg 17635 Fd. 1/2" rebar LCRC: L2380, P496
5 2001 LCRC-Birkett 41094 L11091, P355 Subject LCRC is for L-03. It shows 2 distances to L-02.
6 2002 Survey-Hunter 46670 Object found not stated

B. Description of corner evidence found and/or method applied in restoring or reestablishing corner:

The corner was perpetuated with the found 1/2" iron rod.
Occupation: North- South- CL Burdon Rd. (gravel); East, West- CL Hobarth Rd. (gravel).
The witness from Item 2 along with the distances from Items 4, 5 and Remon 07 were used to verify the location of the corner.

Distances:

L-02 to L-01 2696.06' 4 L-02 to M-02 5033.82' 3, 6 L-02 to L-03 2697.41' 5 2697.47' 5 L-02 to K-02 2672.02' 4
2696.71' Remon 08 5032.74' Remon 08 2697.32' Remon 08 2672.06' Remon 08
N03°36'30"W N87°03'57"E S03°07'21"E S87°13'35"W

C. Description of monument for corner and accessories established to perpetuate locating the position of the corner:

I replaced the found 1/2" iron with a 2" aluminum cap stamped "MACOMB COUNTY MONUMENT MI ACT 345; L-02: 43058" placed on a 3/4"x24" steel bar.

Witnesses:

- N50°E 34.45' Set PK nail w/"MACOMB COUNTY WITNESS TAG" in S face utility pole
S30°E 40.24' Set PK nail w/"MACOMB COUNTY WITNESS TAG" in W face of utility pole
S30°W 89.10' Set PK nail w/"MACOMB COUNTY WITNESS TAG" in NE face of 16" pine
N50°W 34.76' Set PK nail w/"MACOMB COUNTY WITNESS TAG" in NE face of 26" willow

THE SELECTED LOCATION IS ACCEPTED BY ME AND IS GENERALLY ACCEPTED BY PROFESSIONAL SURVEYORS AS THE BEST AVAILABLE EVIDENCE OF THE POSITION OF THIS CORNER.

Signed by [Signature] Date August 27, 2008.

Surveyor's Michigan License No. 43058



FORM APPROVED BY MICHIGAN STATE BOARD OF LAND SURVEYORS, JAN. 28 1971
REVISED MAY 14, 1975
REVISED JAN. 1983
REVISED OCT. 1995



ACCEPTED BY THE MACOMB COUNTY SURVEY PEER GROUP AS THE OFFICIAL CORNER UNDER MICHIGAN PUBLIC ACT 345 OF 1990 AT A MEETING HELD ON 6-17-08
MARTIN C. DUNN, P.S. CHAIRMAN

Register of Deeds Stamp & File Number grid with columns A-M and rows 1-13. A dot is present in cell (2, L).

L-02
DOSSIER CONTENT
2008 REMON
T.3N., R.14E.,
Chesterfield Township, Macomb County, Michigan

Section One

Index

Pictures in the four cardinal directions; before and after setting the required monumentation.

Section Two

LCRC

Surveyor's Report

Section Three

- 1 Field Notes
- 2 Sketch
- 3 Township Map
- 4 Tax Map 1875
- 5 Tax Map 1895
- 6 Tax Map 1916
- 7 Tax Map 1961
- 8 Tax Map 1974
- 9 Aerial Pictures 2005

Section Four

- 1 1962 MCRC Witness Record-CGM
- 2 1973 LCRC-Patterson 17631 L2380, P496
- 3 1992 Survey-James 19335
- 4 2001 Survey-Soderberg 17635
- 5 2001 LCRC-Birkett 41094 L11091, P355
- 6 2002 Survey-Hunter 46670

L-02 CHESTERFIELD TOWNSHIP

GLO Survey History:

Researching the government survey records for Macomb County I have found that the Chesterfield Township was surveyed and subdivided not according to then in force Manual of Surveying Instructions. Due to presence of Lake St. Clair in the Southeast portion of the Township and numerous Private Claims along the shore exterior boundaries of the Township were established by William Preston, D.S. in 1817 in the following manner and order:

1. South boundary was run East from the Southwest corner.
2. East boundary was run South from the Northeast Twp. corner.
3. North boundary was run West from the Northeast Twp. corner.
4. West boundary was run South from the Northwest Twp. corner.

The subdivision of the Township commenced at the Northeast corner of Section 6; thence run South & West. Thus the closing Sections are along the East and South Township boundaries.

L-02 was not set – Center of Section 1.

Subsequent Restorations:

1	1962	MCRC Witness Record-CGM		FIP	
				NE	35.05' DI: pole
				SE	36.5' Fence post
				NW	35.03' CL 12" willow
2	1973	LCRC-Patterson	17631	1.2380, P496	Iron
					NW'ly 34.23' PK nail in 12" tree
				*	NE'ly 34.34' PK nail in utility pole
					SW'ly 140.95' PK nail in utility pole
3	1992	Survey-James	19335		FIB
4	2001	Survey-Soderberg	17635		Fd. 1/2" rebar LCRC: 1.2380, P496
5	2001	LCRC-Birkett	41094	1.11091, P355	Subject LCRC is for L-03. It shows 2 distances to L-02.
6	2002	Survey-Hunter	46670		Object found not stated

Field evidence:

The corner was perpetuated with the found 1/2" iron rod.
Occupation: North, South- CL Burdon Rd. (gravel); East, West- CL Hobarth Rd. (gravel).

Distances:

L-02 to L-01	L-02 to M-02	L-02 to L-03	L-02 to K-02
2696.06' 4	5033.82' 3	2697.41' 5	2672.02' 4
		2697.47' 5	
2696.71' Remon 08	5032.74' Remon 08	2697.32' Remon 08	2672.06' Remon 08

Recommendation:

The witness from Item 2 along with the distances from Items 4, 5 and Remon 07 were used to verify the location of the corner.

I recommend to the Peer Review Board to accept the found 1/2" iron rod as proper location for the corner.
I recommend replacing the found 1/2" iron with a 2" aluminum cap stamped "MACOMB COUNTY MONUMENT MI ACT 345: L-02: 43058" placed on a 3/4"x24" steel bar.

Witnesses:

N50°E	34.45'	Set PK nail w/"MACOMB COUNTY WITNESS TAG" in S face utility pole
S30°E	40.24'	Set PK nail w/"MACOMB COUNTY WITNESS TAG" in W face of utility pole
S30°W	89.10'	Set PK nail w/"MACOMB COUNTY WITNESS TAG" in NE face of 16" pine
N50°W	34.76'	Set PK nail w/"MACOMB COUNTY WITNESS TAG" in NE face of 26" willow

Respectfully submitted.

Derek Kosicki, PS # 43058

NEW HAVEN
COOBS TOWER

L-02

REMON 2008
CHESTERFIELD TWP., T3N, R14E

DATE: 5/8/08
CREW: AT, JS
OBJECT FOUND: ET
POINT No.: 16
CTRL. PTS.: NONE



N 50° W SET PK W/MALCOMB
COUNTY WITNESS TAG IN NE FACE
WILLOW TREE 34.7L
26"

N 50° E SET PK W/MALCOMB
COUNTY WITNESS TAG IN S FACE
OF UTILITY POLE 34 45

S 30° W SET PK W/MALCOMB
COUNTY WITNESS TAG IN NE FACE
OF PINE TREE. 89.10
16"

S 30° E SET PK W/MALCOMB
COUNTY WITNESS TAG IN WEST FACE
OF UTILITY POLE. 40 24

OCCUPATION

(if road state surface): GRAVEL

NORTH: E BURDON, GRAVEL

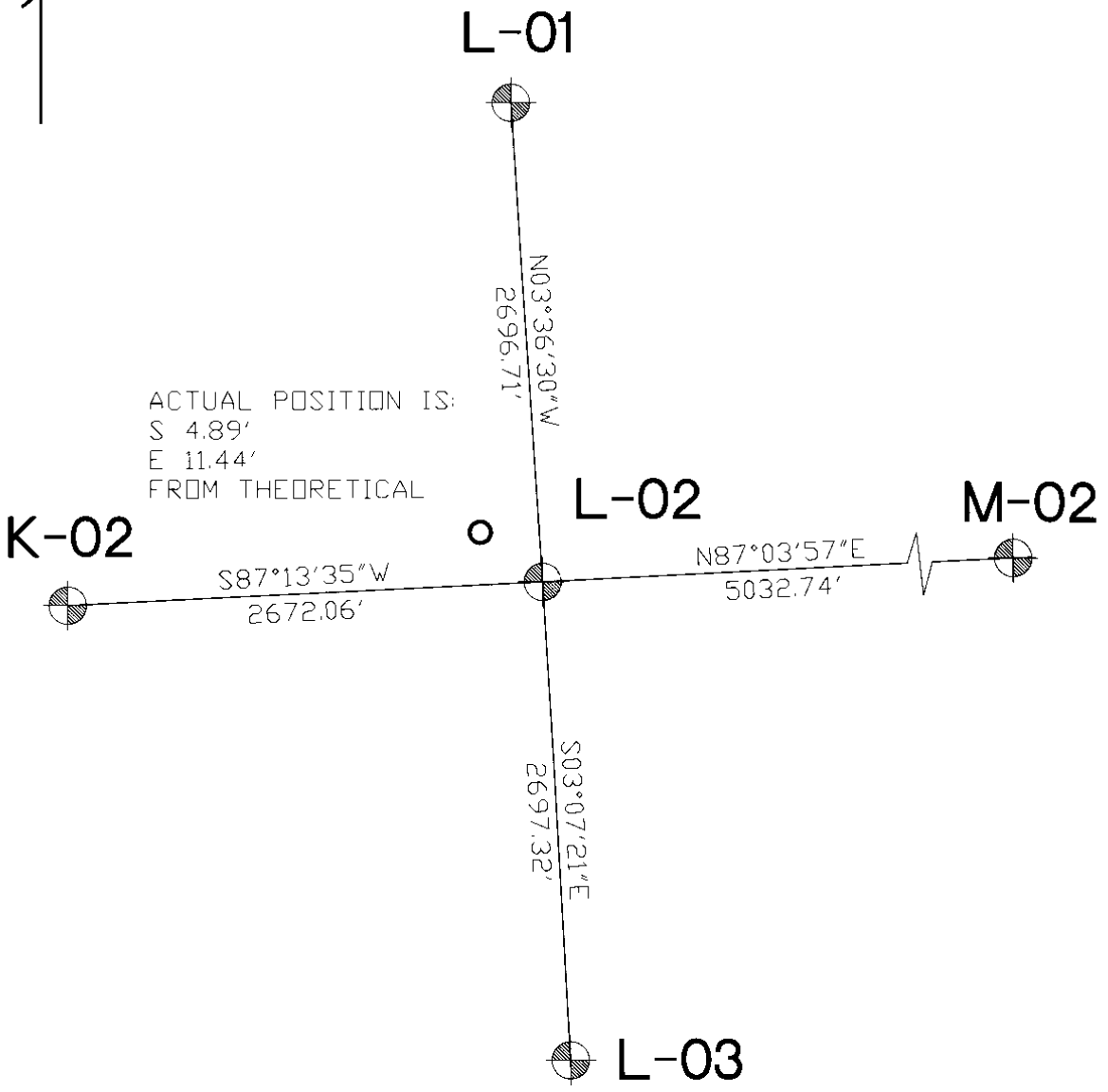
EAST: E HOBARTH, GRAVEL

SOUTH: E BURDON, GRAVEL

WEST: E HOBARTH, GRAVEL



L-02
REMON 2008
CHESTERFIELD TWP., T3N, R14E

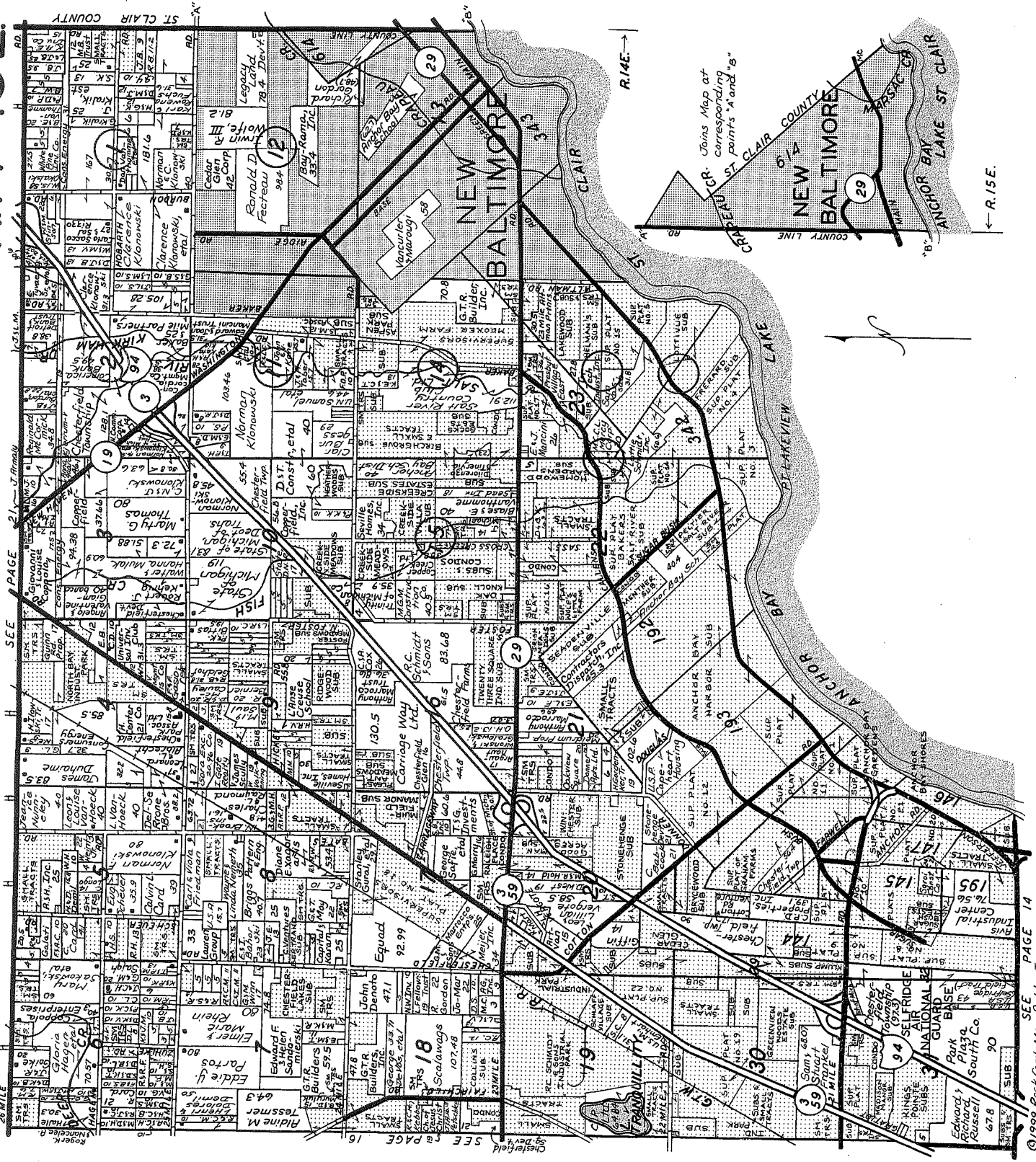


SECTION CORNER



THEORETICAL POSITION OF CENTER OF SECTION

CHESTERFIELD T.3N.-R.14-15E.

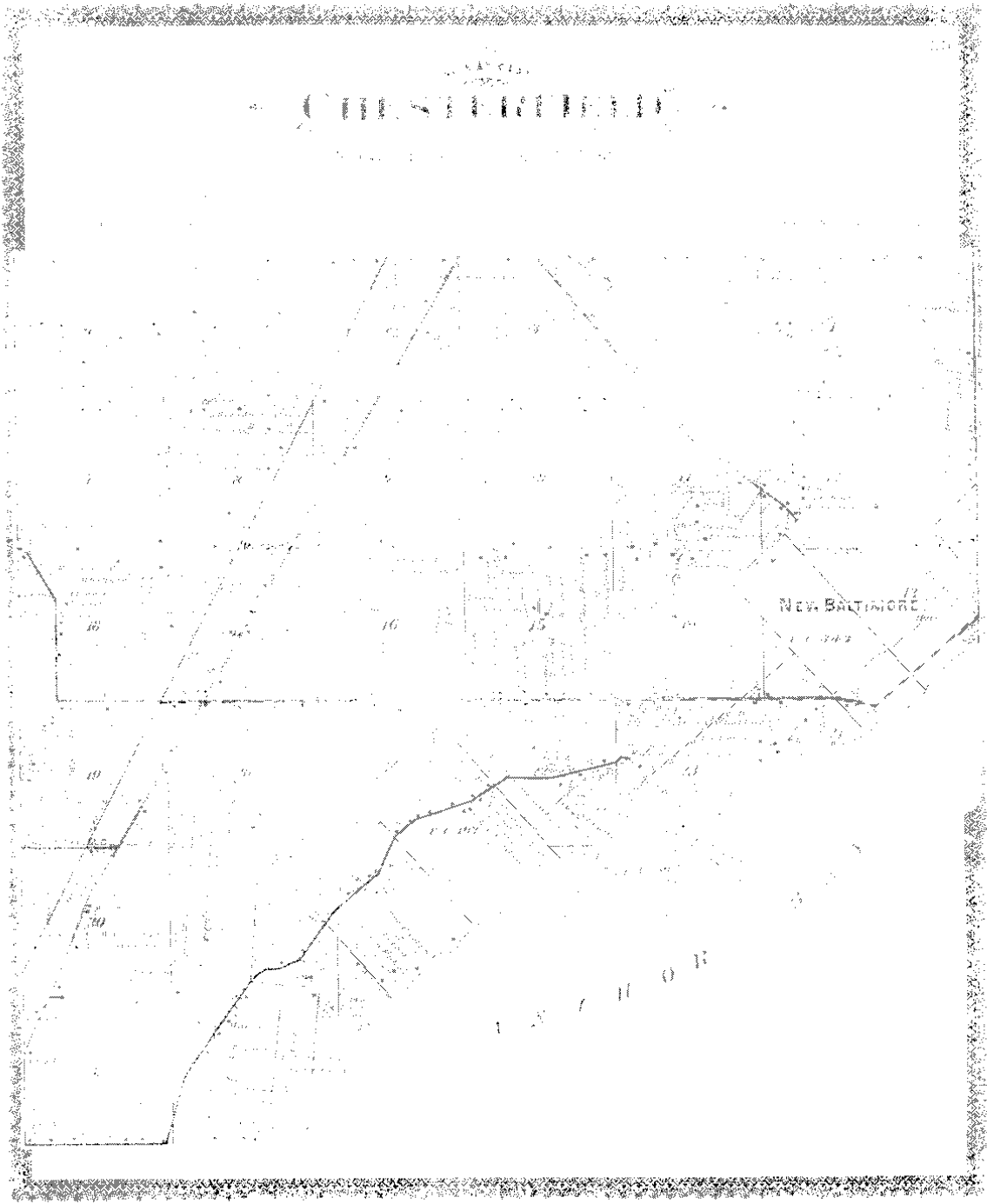


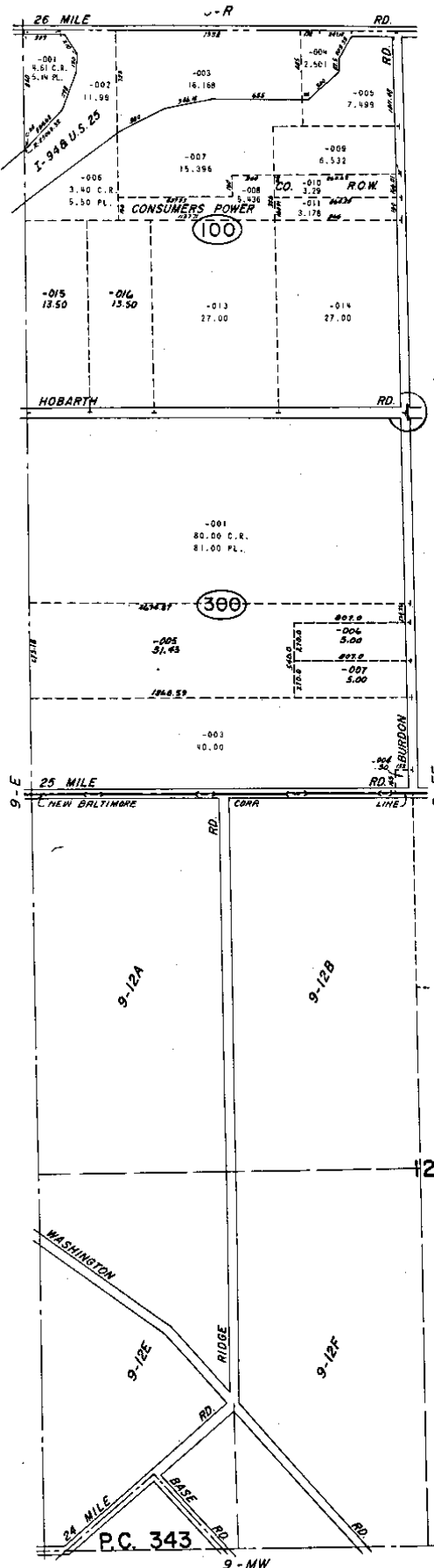
LINCOLN TITLE COMPANY

Flexible closing schedule • Personalized service • Knowledgeable staff

25962 Knollwood Drive South • Chesterfield, Michigan 48051 • Telephone: (810) 598-2930 • Fax: (810) 598-2936

OFFICES ALSO IN PORT HURON & ROSEVILLE



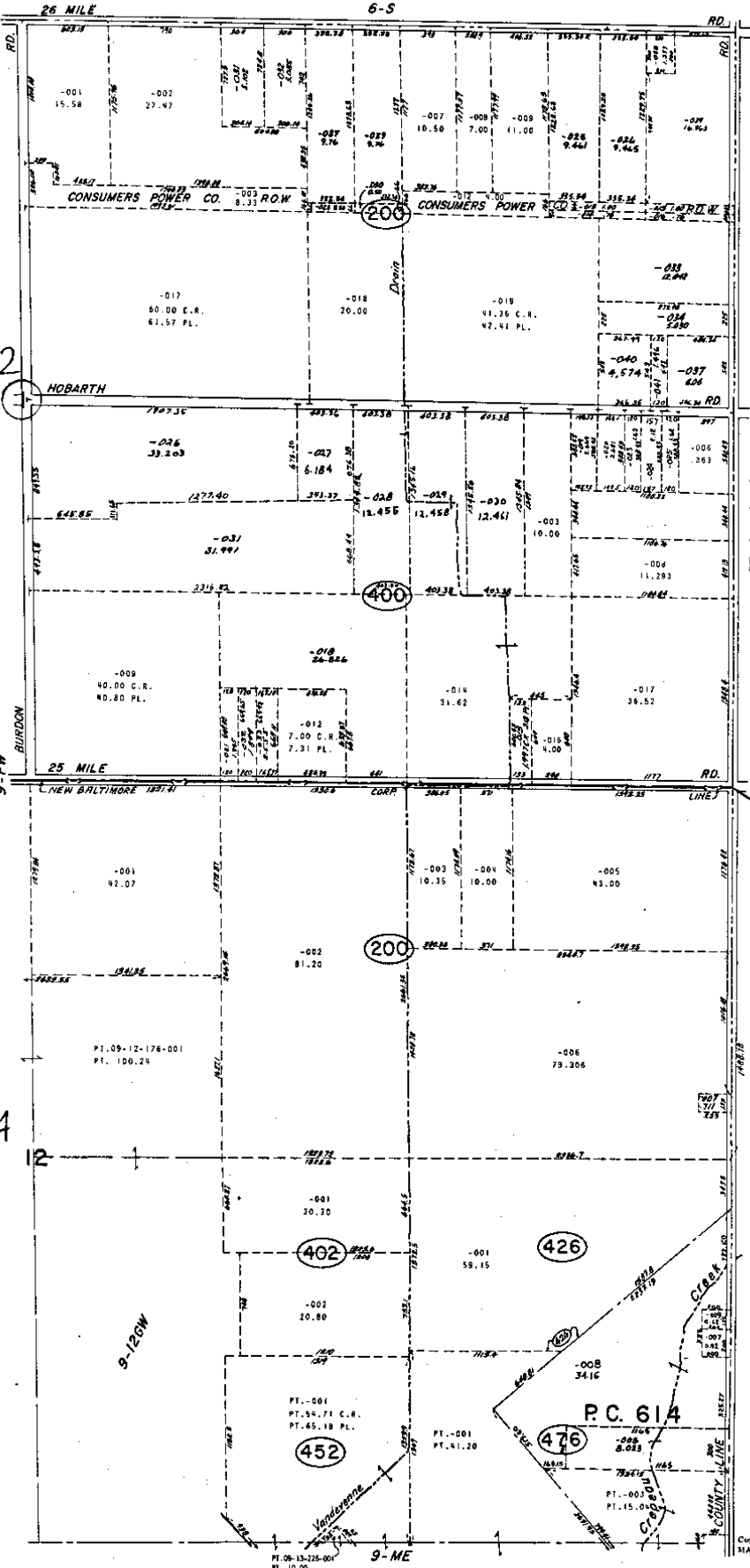


L-2

L-4

NEW BALTIMORE & CHESTERFIELD TWP.
 W. PT. SECS. 1, 12, & PT. P.C. 343 T.3N. R.14E.

Copyright 1974
 MACOMB COUNTY, MICHIGAN
 SCALE: 1" = 400'
 590
 9-FW
 11



L-2

L-4

REV. 9-74
REV. 6-75
REV. 4-76
REV. 1-78
REV. 5-77
REV. 5-78
REV. 12-75
REV. 9-75

NEW BALTIMORE & CHESTERFIELD TWP.
E. PT. SECS. 1, 12 & PT. P.C. 614 T.3N. R.14E

SCALE, 1" = 400'
591
9-FE

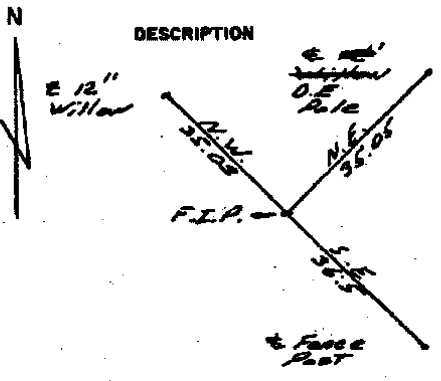
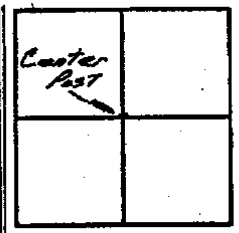
Copyright 1974
MACOMB COUNTY, MICHIGAN

L-2

T.3 N. R.14 E.

SEC. NO. 1 FILE NO.

MONUMENT WITNESSES RECORD



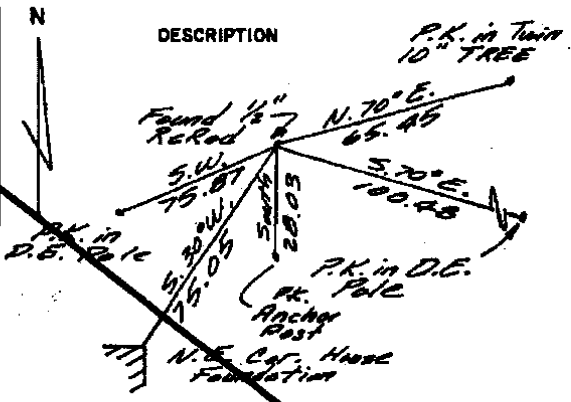
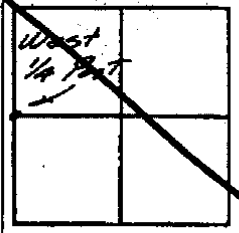
CHARLES G. MELCHING AND ASSOCIATES, INC.

CGM SURVEY CHIEF 62 DATE

T.3 N. R.14 E.

SEC. NO. 5 FILE NO.

MONUMENT WITNESSES RECORD



CHARLES G. MELCHING AND ASSOCIATES, INC.

MELCHING SURVEY CHIEF AUG-1972 DATE

1

LAND CORNER RECORDATION CERTIFICATE

FILING REQUIREMENT OF ACT 74, MICH. P.A.1970

Chesterfield Township

LIBER **2380** PAGE **496**

A176340

FOR CORNERS OF--	LOCATED IN--	CORNER CODE NUMBER
1. PUBLIC LAND SURVEY	T. <u>3</u> N. R. <u>14</u> E. <u>X</u>	<u>K1, L1, K2, L2</u>
2. PROPERTY CONTROLLING IN SECTION	T. _____ N. S. R. _____ E. _____ W. _____	_____
3. MISCELLANEOUS PROPERTY IN SECTION	T. _____ N. S. R. _____ E. _____ W. _____	_____
4. LOT NO. _____	RECORDED PLAT _____	_____
5. PRIVATE CLAIMS _____		

RECORDED IN MACOMB COUNTY
RECORDS AT: 10:30 A
MAR 27 1973

Ed ...
CLEAN RECORDS
REGISTER OF DEEDS STAMP AND
FILING NUMBER

I, Robert J. Patterson do hereby certify that under requirements of P.A. 74, Michigan P.A. of 1970, the corner points mentioned in lines 1 and 2 above (identified with circles on index code diagram - over) were, in a field survey on February 5 1973, established, re-established, monumented, re-monumented, recovered or restored as expressed below and in conformance with regulations and rules therefore as required in the current manual of survey instructions of the United States Department of the Interior, Bureau of Land Management or by a decree of a court of law. Furthermore, that the corner points mentioned in lines 3, 4 and 5 above were, in a field survey on _____ 19____, found, recovered, restored, established or re-established as expressed below and in conformance with the rules of the Michigan State Board of Registration for Land Surveyors or, by a Decree of a Court of law:

A. Description of original monument and accessories and/or subsequent restoration:

B. Description of corner evidence found and/or method applied in restoring or re-establishing corner:

C. Description of monument for corner and accessories established to perpetuate locating the position of the corner:

- K1** - 1/2" Rod in Hand Hole - Witness - P.K. nail in 18" Tree, N.W'y - 75.05 ft
P.K. nail in Utility Pole N.E'y - 97.44 ft. P.K. nail in Utility Pole S.E'y - 74.71 ft.
- L1** - P.K. nail - Witness - P.K. nail in Utility Pole N.W'y - 53.81 ft. P.K. nail in Utility Pole N.E'y - 78.80 ft. P.K. nail in 27" Tree, S.E'y - 93.89 ft.
- K2** - Iron - Witness - P.K. nail in 12" Tree, N.E'y 23.72 ft. P.K. nail in 12" Tree, S.E'y - 21.22 ft. P.K. nail in 12" Tree, S.W'y - 28.41 ft.
- L2** - Iron - Witness - P.K. nail in 12" Tree, N.W'y 34.23 ft. P.K. nail in utility Pole N.E'y 34.34 ft. P.K. nail in Utility Pole S.W'y 140.95 ft. NOT

SIGNED BY Robert J. Patterson

DATE Februa

SURVEYOR'S MICHIGAN REGISTRATION NO. 17631

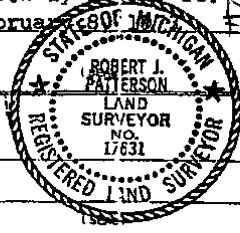
FOR STATE AND UNITED STATES AGENCIES:

SIGNED BY _____ CHIEF OF SURVEY PARTY

DATE _____

APPROVED AND SIGNED BY _____ MICHIGAN REGISTERED LAND SURVEYOR

DATE _____



00288

SURVEYOR'S MICHIGAN REGISTRATION NO. _____

Form No. ML M735
DOWLENEY BROS. & CO., KALAMAZOO, MICH.

FORM APPROVED BY MICHIGAN STATE BOARD OF REGISTRATION, JAN. 28, 1971
DISTRIBUTED BY MICHIGAN SOCIETY OF REGISTERED LAND SURVEYORS

Q.C. DEED & TAX DESC. (PARCEL 09-01-400-026)

HOBARTH RD. E 1/4 COR SEC 1 (MOR. BOX)

2124.47' E 1/4 LINE

1907.25'

43' 2 1/2" (SPACED)

"A" 30.62 AC. ±

849.95'

564.55'

152.5'

1277.40'

676.20'

1277.40'

564.55'

1277.40'

564.55'

1277.40'

564.55'

1277.40'

564.55'

1277.40'

1277.40'

564.55'

1277.40'

564.55'

1277.40'

564.55'

1277.40'

564.55'

1277.40'

564.55'

564.55'

1277.40'

564.55'

1277.40'

564.55'

1277.40'

564.55'

1277.40'

564.55'

1277.40'

1277.40'

564.55'

1277.40'

564.55'

1277.40'

564.55'

1277.40'

564.55'

1277.40'

564.55'

564.55'

1277.40'

564.55'

1277.40'

564.55'

1277.40'

564.55'

1277.40'

564.55'

1277.40'

1277.40'

564.55'

1277.40'

564.55'

1277.40'

564.55'

1277.40'

564.55'

1277.40'

564.55'

564.55'

1277.40'

564.55'

1277.40'

564.55'

1277.40'

564.55'

1277.40'

564.55'

1277.40'

1277.40'

564.55'

1277.40'

564.55'

1277.40'

564.55'

1277.40'

564.55'

1277.40'

564.55'

564.55'

1277.40'

564.55'

1277.40'

564.55'

1277.40'

564.55'

1277.40'

564.55'

1277.40'

1277.40'

564.55'

1277.40'

564.55'

1277.40'

564.55'

1277.40'

564.55'

1277.40'

564.55'

564.55'

1277.40'

564.55'

1277.40'

564.55'

1277.40'

564.55'

1277.40'

564.55'

1277.40'

1277.40'

564.55'

1277.40'

564.55'

1277.40'

564.55'

1277.40'

564.55'

1277.40'

564.55'

564.55'

1277.40'

564.55'

1277.40'

564.55'

1277.40'

564.55'

1277.40'

564.55'

1277.40'

1277.40'

564.55'

1277.40'

564.55'

1277.40'

564.55'

1277.40'

564.55'

1277.40'

564.55'

564.55'

1277.40'

564.55'

1277.40'

564.55'

1277.40'

564.55'

1277.40'

564.55'

1277.40'

1277.40'

564.55'

1277.40'

564.55'

1277.40'

564.55'

1277.40'

564.55'

1277.40'

564.55'

564.55'

1277.40'

564.55'

1277.40'

564.55'

1277.40'

564.55'

1277.40'

564.55'

1277.40'

1277.40'

564.55'

1277.40'

564.55'

1277.40'

564.55'

1277.40'

564.55'

1277.40'

564.55'

564.55'

1277.40'

564.55'

1277.40'

564.55'

1277.40'

564.55'

1277.40'

564.55'

1277.40'

1277.40'

564.55'

1277.40'

564.55'

1277.40'

564.55'

1277.40'

564.55'

1277.40'

564.55'

564.55'

1277.40'

564.55'

1277.40'

564.55'

1277.40'

564.55'

1277.40'

564.55'

1277.40'

1277.40'

564.55'

1277.40'

564.55'

1277.40'

564.55'

1277.40'

564.55'

1277.40'

564.55'

564.55'

1277.40'

564.55'

1277.40'

564.55'

1277.40'

564.55'

1277.40'

564.55'

1277.40'

1277.40'

564.55'

1277.40'

564.55'

1277.40'

564.55'

1277.40'

564.55'

1277.40'

564.55'

564.55'

1277.40'

564.55'

1277.40'

564.55'

1277.40'

564.55'

1277.40'

564.55'

1277.40'

1277.40'

564.55'

1277.40'

564.55'

1277.40'

564.55'

1277.40'

564.55'

1277.40'

564.55'

564.55'

1277.40'

564.55'

1277.40'

564.55'

1277.40'

564.55'

1277.40'

564.55'

1277.40'

1277.40'

564.55'

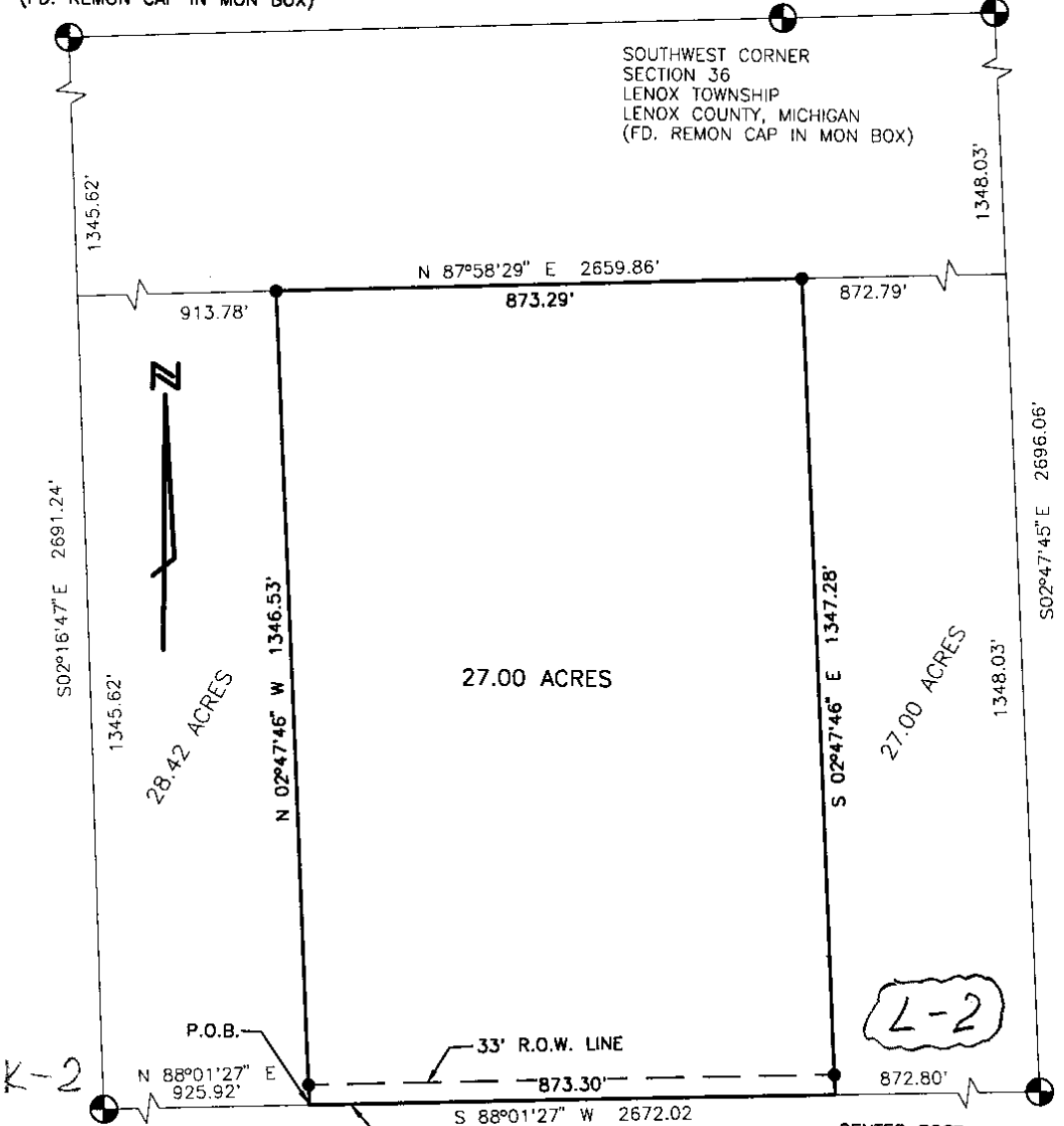
1277.40'

CERTIFICATE OF SURVEY L-1

NORTHWEST CORNER
SECTION 1, T.3N., R.14E.,
CHESTERFIELD TOWNSHIP
MACOMB COUNTY, MICHIGAN
(LIBER 6166, PAGE 003)
(FD. REMON CAP IN MON BOX)

NORTH QUARTER CORNER
SECTION 1, T.3N., R.14E.,
CHESTERFIELD TOWNSHIP
MACOMB COUNTY, MICHIGAN
(LIBER 2380, PAGE 496)
(FD. 1/2" REBAR)

SOUTHWEST CORNER
SECTION 36
LENOX TOWNSHIP
LENOX COUNTY, MICHIGAN
(FD. REMON CAP IN MON BOX)



WEST QUARTER CORNER
SECTION 1, T.3N., R.14E.,
CHESTERFIELD TOWNSHIP
MACOMB COUNTY, MICHIGAN
(LIBER 3168, PAGE 946)
(FD. 1" IRON)

EAST-WEST QUARTER LINE OF SECTION 1
AND THE C OF HOBARTH ROAD

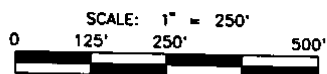
CENTER POST
SECTION 1, T.3N., R.14E.,
CHESTERFIELD TOWNSHIP
MACOMB COUNTY, MICHIGAN
(LIBER 2380, PAGE 496)
(FD. 1/2" REBAR)

HOBARTH ROAD (66 FT. WD.)

* SEE ATTACHED RIDER FOR DESCRIPTION(S) *

LEGEND	
●	= SET IRON w/CAP #23505

PHILP F. GRECO TITLE COMPANY 50-404621
I HEREBY CERTIFY that I have surveyed and marked the land above plotted and/or described on JUNE 28, 2001.
And that the ratio of closure on the unadjusted field observations of such survey was greater than 1/5000.
And that all of the requirements of P.A. 132, 1970 have been complied with.



BEARINGS WERE DETERMINED FROM WEST LINE OF SECTION 1 FROM I-94 RIGHT-OF-WAY DRAWINGS

FENN and ASSOCIATES INC.
LAND SURVEYING
42802 Mound Road
Sterling Heights, Michigan 48314
PHONE: (810) 254-9577

CLIENT:	EXPRESS BUILDERS		
DATE	06/28/01	SCALE	1" = 250'
DRAWN	K.E. MCKEOWN	CHECK	W.E.S.
JOB NO.	01-3707	SHEET	1 OF 2

William E. Soderberg P.S. 17635

SURVEY & RE-MONUMENTATION

MAR 13 2002

SECTION

LAND CORNER RECORDATION CERTIFICATE
Filing Requirement of Act 74, Michigan P.A. 1970

For corners in

MACOMB
(County)

CHESTERFIELD TOWNSHIP

Located In: Corner Code #

- | | | |
|------------------------------------|--|------------|
| 1. Public Land Survey | T <u>3N</u> R <u>14E</u> | <u>L-3</u> |
| | T <u> </u> R <u> </u> | <u> </u> |
| | T <u> </u> R <u> </u> | <u> </u> |
| | T <u> </u> R <u> </u> | <u> </u> |
| 2. Property Controlling in Section | S <u> </u> T <u> </u> R <u> </u> | <u> </u> |
| | S <u> </u> T <u> </u> R <u> </u> | <u> </u> |
| 3. Miscellaneous Property in Sec. | S <u> </u> T <u> </u> R <u> </u> | <u> </u> |
| | S <u> </u> T <u> </u> R <u> </u> | <u> </u> |

4. Lot No. _____, Recorded Plat _____
5. Private Claims _____

ACCEPTED BY THE MACOMB COUNTY SURVEY BOARD GROUP AS THE OFFICIAL CORNER UNDER MICHIGAN PUBLIC ACT 345 OF 1980 AT A MEETING HELD ON 12/13/01
WILLIAM E. SOLLBERG, P.S., CHAIRMAN

1246433
LIBER 11091 PAGE 355
12/13/2001 10:50:00 A.M.
MACOMB COUNTY, MI
CARNELLA BARAUGH, REGISTER OF DEEDS

Register of Deeds Stamp & File Number

I, ROBERT H. BIRKETT, in a field survey on JULY 28, 2001 do hereby certify that under requirements of P.A. 74, Michigan P.A. of 1970, the corner points mentioned in lines 1 and 2 above were in conformance with regulations and rules therefore as required in the current manual of survey instructions of the United States Department of the Interior, Bureau of Land Management or by a decree of a Court of Law and for that the corner points mentioned in lines 3, 4 and 5 above were in conformance with the rules of the Michigan Board of Land Surveyors or by a Decree of a Court of Law; established, re-established, monumented, re-monumented, recovered, found as expressed below:

NOTE: Not more than 2 corners, all in the same town and range, may be recorded on this certificate.

- A. Description of original monument and accessories and/or subsequent restoration:
L-3 1818, PRESTON, GLO, SET WOOD POST
(a) 1973, J. LANSKY # 18659, FOUND 1" IRON PIPE, LCRC L. 2409, P. 558
(b) 1977, H. KOBS # 14097, FOUND 1/2" PIPE, LCRC L. 2882, P. 490
(c) 1986, H. AVEY # 15396, FOUND 1" IRON PIPE, LCRC L. 4353, P. 426
(d) 2000, AEW, INC., CALCULATION SHEET
(e) 2000, S. MONEY #30092, "WINDRIDGE ESTATES SUBDIVISION", L. 152 OF PLATS, P. 26-40

- B. Description of corner evidence found and/or method applied in restoring or reestablishing corner:
L-3 FOUND 3/4" PIPE AT CENTER OF 25 MILE ROAD (GRAVEL) AND 24' WEST OF CENTER OF BURDON ROAD (GRAVEL) TO THE NORTH, 0.8' DEEP.
WITNESSES FROM (a), (b) & (c) WERE USED TO RECOVER THIS CORNER

FIELD MEASUREMENTS

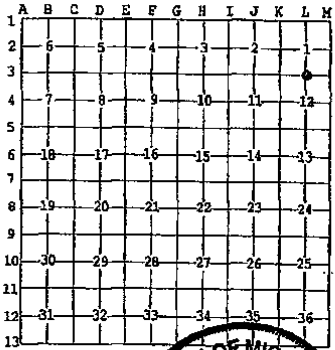
L-3 TO L-2 NO GLO DISTANCE 2000, AEW, INC. - 2697.41' 2001, REMON - 2697.47'	L-3 TO M-3 1818, GLO - 4874.76' (73.86) 2000, AEW INC - 5034.89' 2001, REMON - 5034.90'	L-3 TO K-3 1818, GLO - 2640' (40 CHAINS) 2000, S. MONEY - 2676.94' 2001, REMON - 2677.03'
---	--	--

- C. Description of monument for corner and accessories established to perpetuate locating the position of the corner:
L-3 SET AN ALUMINUM CAP ON EXISTING 3/4" PIPE STAMPED "MACOMB COUNTY MONUMENT, MI ACT 345, L-3, 41094"

- AZ 70° 85.62' FOUND FORM NAIL WITH TAG # 18659 IN THE SOUTHWEST FACE OF A UTILITY POLE
AZ 175° 65.28' SET REMON TAG IN THE EAST FACE OF A UTILITY POLE
AZ 210° 44.31' CENTER TOP HYDRANT
AZ 310° 32.75' FOUND FORM NAIL WITH TAG # 18659 IN THE SOUTHEAST FACE OF A UTILITY POLE

THE SELECTED LOCATION IS ACCEPTED BY ME AND IS GENERALLY ACCEPTED BY PROFESSIONAL SURVEYORS AS THE BEST AVAILABLE EVIDENCE OF THE POSITION OF THE ORIGINAL CORNER.

Signed by Robert H. Birkett Date 11-30-01
Surveyor's Michigan License No. 41094



1207

