

LAND CORNER RECORDATION CERTIFICATE
Filing Requirement of Act 74, Mich. P.A. 1970

For corners in

Macomb (County) Located in: Chesterfield Corner Code: #4
1. Public Land Survey T 3 N R 14 E K-5
2. Property Controlling in Section S T R
3. Miscellaneous Property in Sec. S T R
4. Lot No. Recorded Plat
5. Private Claims

RECORDED 8:30 A

DEC 28 1993

Register of Deeds Stamp & File Number

I, Steven E. Dunn, in a field survey on December 8, 1993 do hereby certify that under requirements of P.A. 74, Michigan P.A. of 1970, the corner points mentioned in lines 1 and 2 above were in conformance with regulations and rules therefore as required in the current manual of survey instructions of the United States Department of the Interior, Bureau of Land Management or by a decree of a Court of Law and/or that the corner points mentioned in lines 3, 4 and 5 above were in conformance with the rules of the Michigan Board of Land Surveyors or by a Decree of a Court of Law; established, re-established, monumented, re-monumented, recovered, found as expressed below.

NOTE: Not more than 4 corners, all in the same town and range, may be recorded on this certificate.

Grid table with columns A-M and rows 2-13. A dot is marked at the intersection of column J and row 5.

A. Description of original monument and accessories and/or subsequent restoration:
GLO Post - No Evidence of Original Corner.
GLO Original survey performed by Preston 2-18-1818.

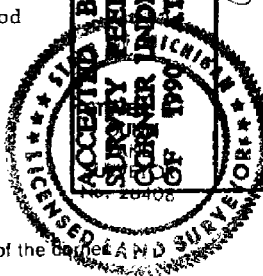
Certificate of Survey - Unrecorded Martin C. Dunn #30081 June 6, 1989

B. Description of corner evidence found and/or method applied in restoring or reestablishing corner.

K-5 Found 1/2" Iron Rod. Verified location by Plats.
L.15, P.42 - A.P. #10
L.15, P.40 - A.P. #9

Replaced with Macomb County Monument Marker #28408 on 3/4"x 24" Iron Rod in Monument Box.

ACCEPTED BY THE MACOMB COUNTY SURVEY MEET GROUP AS THE OFFICIAL CORNER UNDER MICHIGAN PUBLIC ACT 345 OF 1990 AT A MEETING HELD ON 12-20-93
Frank J. Dedecker, PS, PE, CHAIRMAN



C. Description of monument for corner and accessories established to perpetuate locating the position of the corner.

K-5 T.3N.,R.14E.
Macomb County Monument Marker #28408 on 3/4" x 24" Iron Rod in Monument Box.

Witnesses:
N.20°W. - 23.00' Found P.K. Nail NE face of Twin 5" Maple.
S.28°W. - 27.66' Found P.K. Nail East face of 11" Pine.
N.65°E. - 45.45' Found P.K. Nail NW face of 23" Cherry.
S.54°E. - 51.15' Found P.K. Nail NE face of 30" Maple.

The selected location is a careful and faithful perpetuation of the position of the original corner.

Signed by Steven E. Dunn Date 12-21-93

Surveyor's Michigan License No. 28408

See Detail on
PLAT Page 9-12E
PL 822

W. M. LIMBACH

ASSESSORS
(L36-RT)

N.O.

PLAT
L36-RT

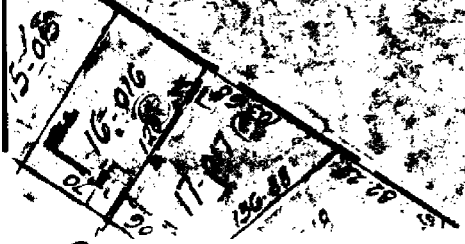
600.65

1599.85

27.609

168.04

70.46



PT-005

884.70
845.98

PT-331

476

Q.58.4

637.37

1502.57
465.38

Copy
MAY

RD

LINE 2

LINE 3

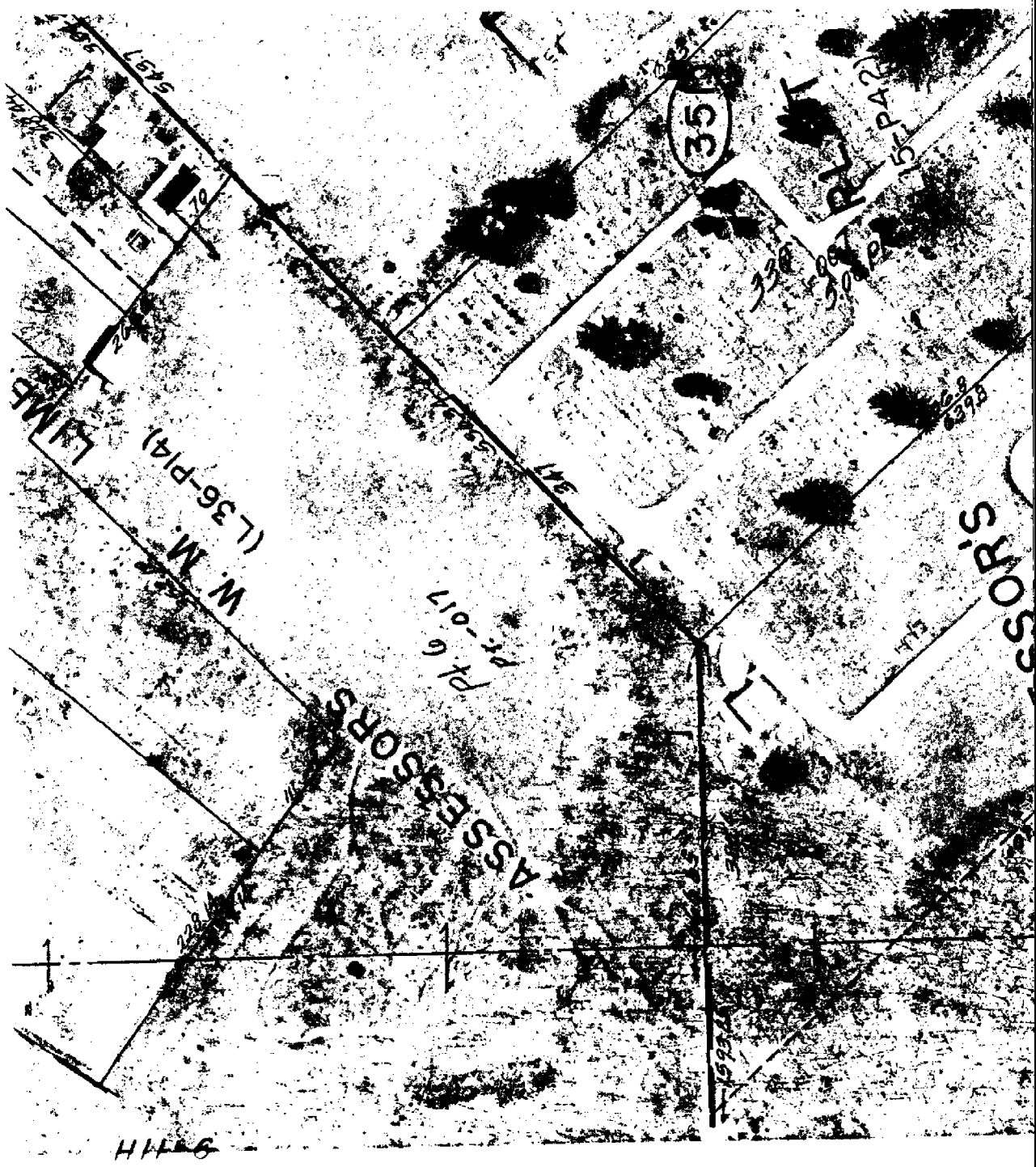
CORR

9-2

MORE 1037.27

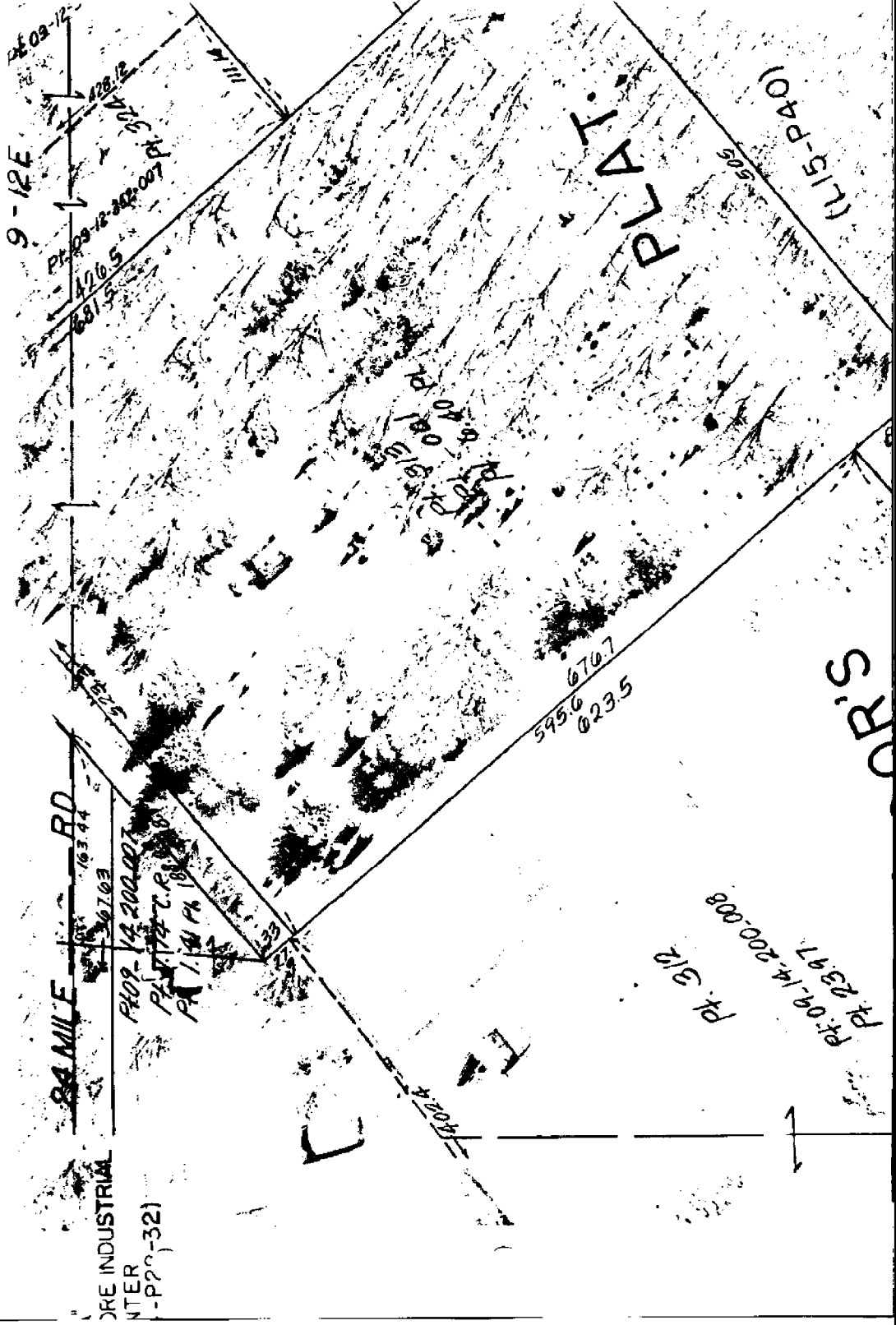
S.E. COR

NEW BALTIMORE
1/2 S.E. 1/4 SEC. 11 T.3N. R.14E.



9-11-6

3 A



101

ASSESS

790.5

90.319

14.79

1-6

P.C. 343

OFFICE

NO

PT

P. C. 343

LINE

S

P. C. 343

9-134

Plot 13, July 1953

INDUSTRIAL

334 28

LINE

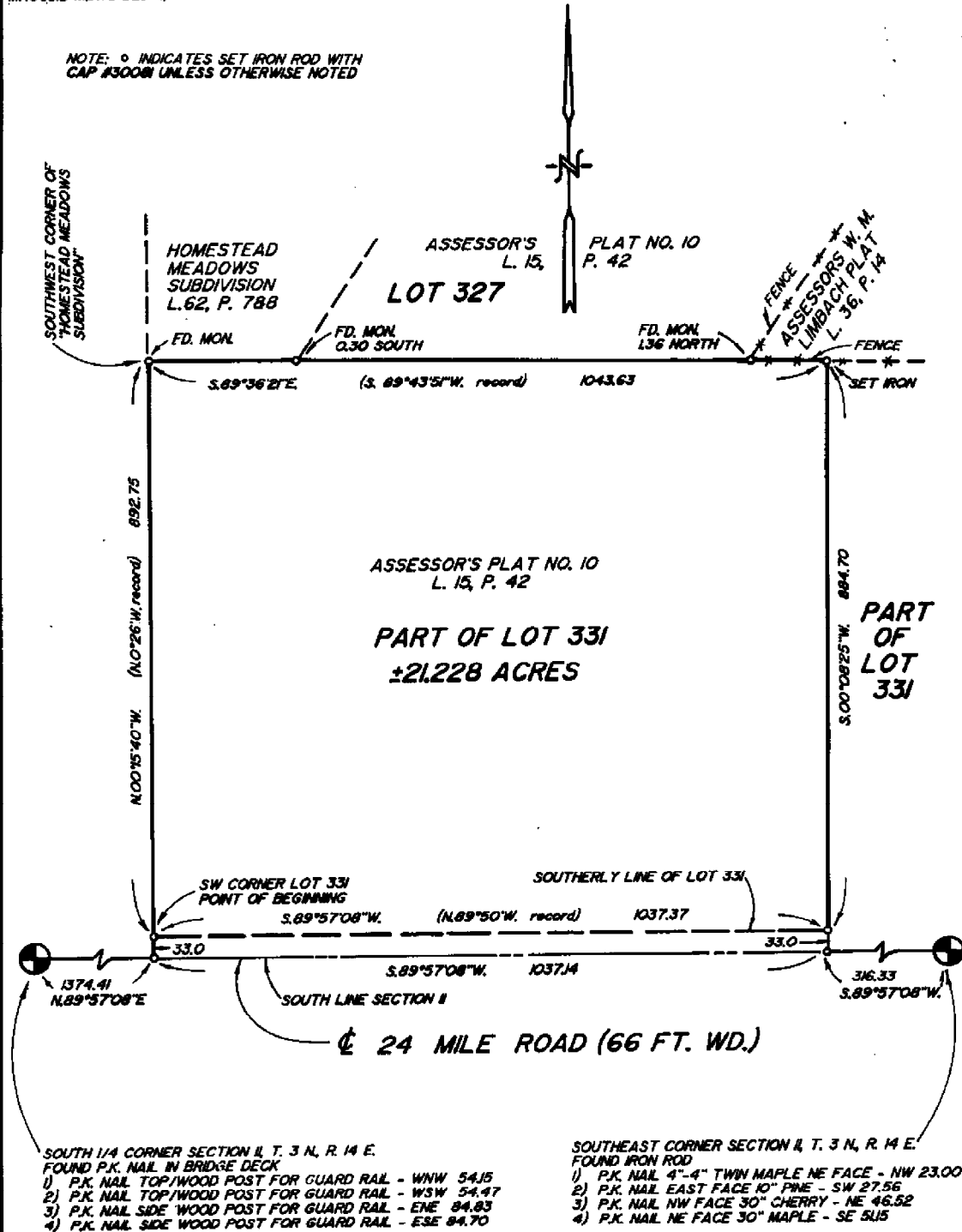
CERTIFICATE OF SURVEY

DUNN & ASSOCIATES LAND SURVEYORS, INC.

MACOMB MEWS BLDG., 7 N. GRATIOT AVE., SUITE 208, MT. CLEMENS, MI 48043

PHONE NUMBER
(313) 465-5553

NOTE: ○ INDICATES SET IRON ROD WITH CAP #30081 UNLESS OTHERWISE NOTED



SOUTH 1/4 CORNER SECTION II, T. 3 N., R. 14 E.

- FOUND P.K. NAIL IN BRIDGE DECK
- 1) P.K. NAIL TOP/WOOD POST FOR GUARD RAIL - WNW 54.15
 - 2) P.K. NAIL TOP/WOOD POST FOR GUARD RAIL - WSW 54.97
 - 3) P.K. NAIL SIDE WOOD POST FOR GUARD RAIL - ENE 84.83
 - 4) P.K. NAIL SIDE WOOD POST FOR GUARD RAIL - ESE 84.70

SOUTHEAST CORNER SECTION II, T. 3 N., R. 14 E.

- FOUND IRON ROD
- 1) P.K. NAIL 4"-4" TWIN MAPLE NE FACE - NW 23.00
 - 2) P.K. NAIL EAST FACE 10" PINE - SW 27.56
 - 3) P.K. NAIL NW FACE 30" CHERRY - NE 46.52
 - 4) P.K. NAIL NE FACE 30" MAPLE - SE 51.5

CERTIFY TO: SOUTH MACOMB ASSOCIATION
BLUE WATER TITLE COMPANY
 ADDRESS: 38285 W. 12 MILE ROAD
 CITY, STATE & ZIP: FARMINGTON HILLS, MICHIGAN
 TWP: NEW BALTIMORE SEC: II COUNTY: MACOMB
 DATE: 6-4-89 DRAWN BY: SJD
 JOB NO.: 89-089 SHEET NO.: 1 OF 2
 SCALE: 1" = 200'

I hereby certify that I have surveyed and mapped the land above and/or described on JUNE 6, 1989 and that the ratio of closure on the unadjusted field observations of such survey was 1/14,314 and that all of the requirements of Public Act 132, of 1970 have been complied with. ALL BEARINGS ARE RELATED TO THE WEST LINE OF "SUPERVISORS HOOKER FARM SUB-DIVISION" L. 23, P. 5 M.C.R.

MARTIN C. DUNN LICENSED LAND SURVEYOR #30081

BOOK NO.: 46 PAGE: 27-33

331

CHURCH

ROAD 663.75

S. E. CORNER 1907 SEC. 11
POINT OF BEGINNING

DESCRIPTION

The land embraced in the annexed plat of "ASSESSOR'S PLAT NO. 10" of part of Sec. 11, and frac. Sec. 12, T. 3. N. R. 14 E., of part of the Village of New Baltimore, Macomb Co., Mich. is described as follows:- Commencing at the S.E. corner of Sec. 11, T. 3. N. R. 14 E., thence S. 89 deg. 50' E. a distance of 163.44 ft., thence N. 48 deg. 22' E. a distance of 832.60 ft., thence N. 49 deg. 35' E. a distance of 752.00 ft., thence N. 41 deg. 25' W. a distance of 686.90 ft., thence N. 54 deg. 06' W. a distance of 2013.50 ft., thence S. 00 deg. 26' E. a distance of 3200.50 ft., thence S. 89 deg. 50' E. a distance of 1351.16 ft. to the point of beginning.

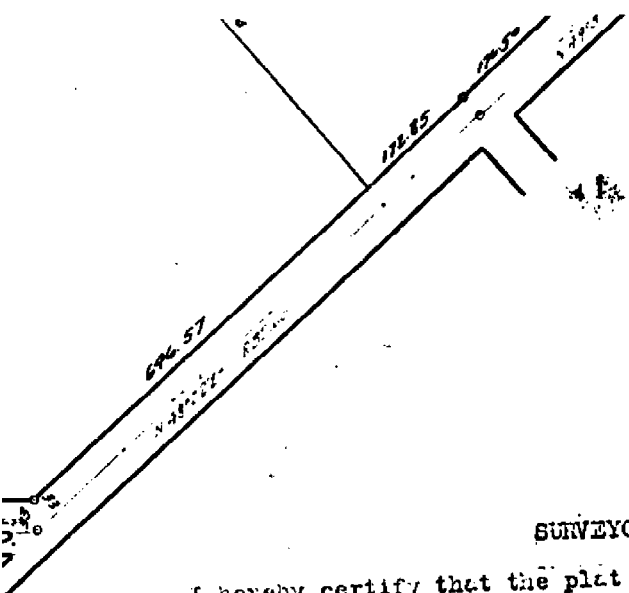
CERTIFICATE OF MUNICIPAL APPROVAL

This plat was approved by the Common Council of the Village of New Baltimore at a meeting held January 12, 1931

Albert P. LeFevre
CLERK

RE

See Resolution for change of street name with LOP of Road Page 277



REGISTER'S OFFICE,
County of Macomb

Received for Record this _____ day
of MAY 27 1931 A.D., 192____ at
2:30 o'clock P.M. and Recorded
in Liber 15 of Plate 1
on Page 42

Vincent Magyette, Deputy Register

SURVEYOR'S CERTIFICATE

I hereby certify that the plat hereon delineated is a correct one and that permanent metal monuments of not less than one inch in diameter and fifteen inches in length set in a concrete base at least four inches in diameter and forty-eight inches in depth have been placed at points marked thus (o) as thereon shown at all angles in the boundaries of the land platted, at all the intersections of streets, intersections of alleys, or of streets and alleys, and at the intersections of streets and alleys with the boundaries of the plat as shown on said plat.

H. J. Fuller
REGISTERED SURVEYOR

CERTIFICATE OF APPROVAL BY COUNTY BOARD

This plat was approved on the 30th day of January, 1931.

Charles H. Hummich
JUDGE OF PROBATE

Essie Harting
COUNTY CLERK

Wm. J. ...
COUNTY TREASURER

HARRY J. FULLER

REGISTERED CIVIL ENGINEER & SURVEYOR

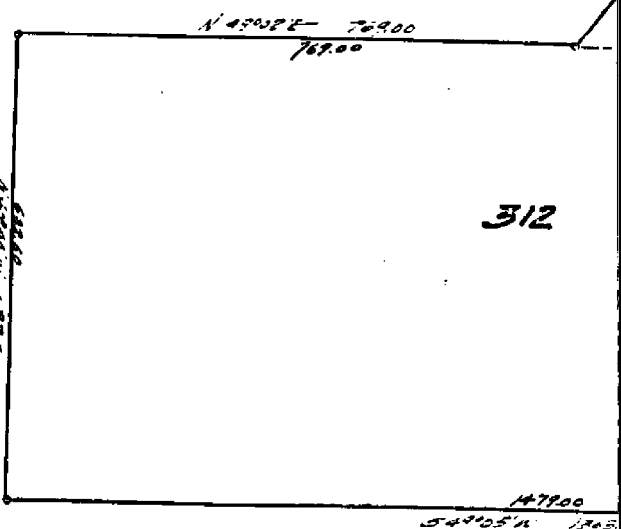
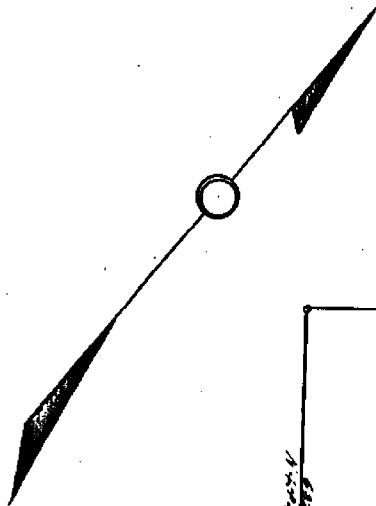
MT. CLEMENS

MICH.

RICH.

P. 40

J. 15



REGISTRATION OF DEEDS
County of Macomb, Mich.
Received for recording this _____ day of _____ A.D. 19____
at _____ o'clock _____ M. and _____ P.
19____
at _____
_____ Recorder

DEDICATION

KNOW ALL MEN BY THESE PRESENTS, That I, William D. Hill, Assessor of the Village of New Baltimore, of Macomb County, State of Michigan, of authority in me vested by Section 51, Act 172, of 1929, having authorized by the Village Council, have caused the land described annexed plat to be surveyed, laid out and platted, to be known as PLAT NO. 9, of part of Trac. Sec. 13 & 14 & P.C. 343, T. 3. N. R. 1, part of the Village of New Baltimore, Macomb Co., Mich., and the alleys as shown on said plat are now being used for such purposes.

WITNESSES:

Carl Phillips
.....
W. J. Miller
.....

William D. Hill
ASSESSOR OF THE VILLAGE OF
BALTIMORE

ACKNOWLEDGMENT

PLAT NO. 9
13 & 14 & P. C. 303 T. 3. N. R. 4. E.
TOWNSHIP OF NEW BALTIMORE, MACOMB CO.
SCALE 1" = 200'

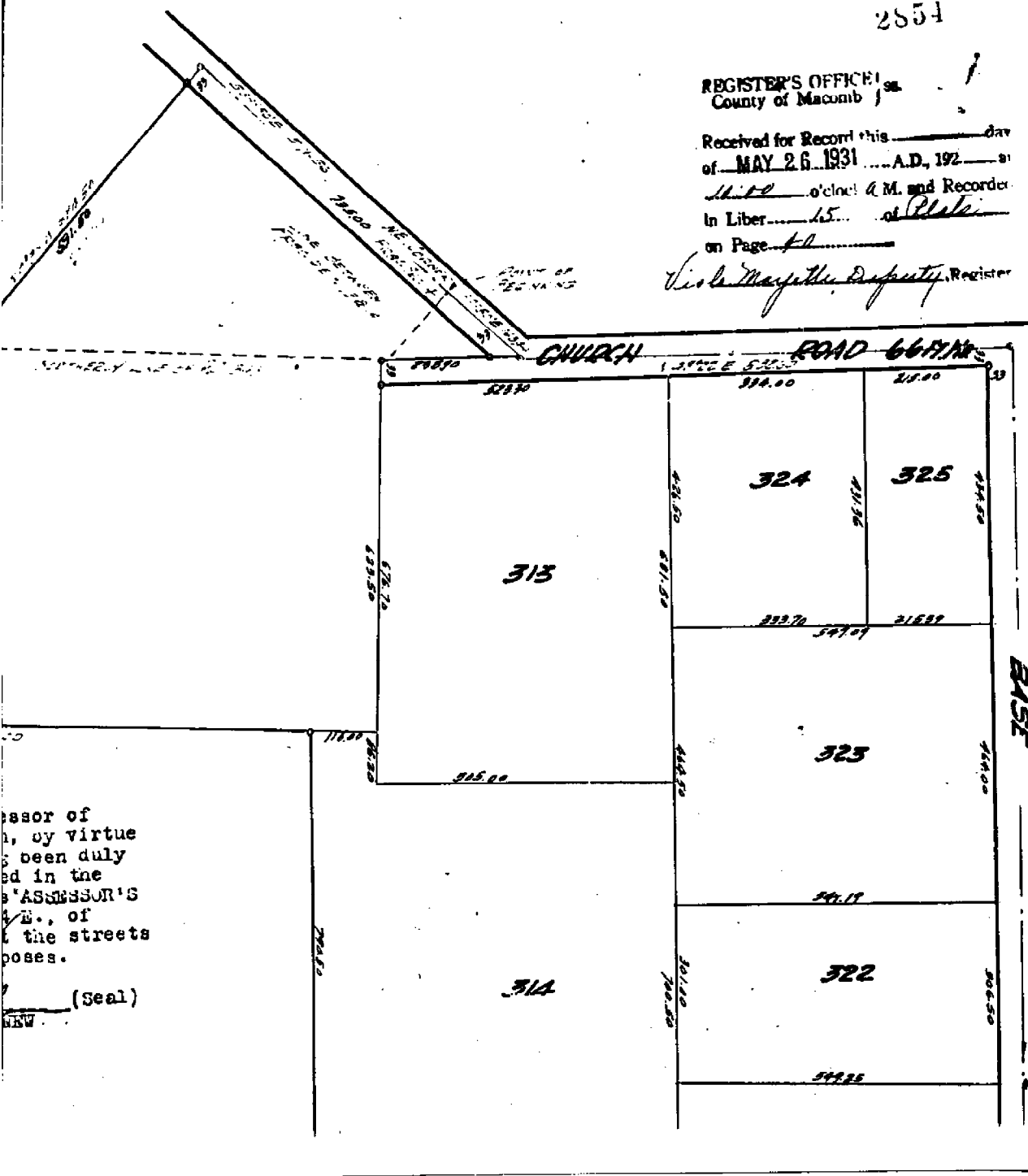
May 25 1931
J. L. Harris

2854

REGISTER'S OFFICE
 County of Macomb

Received for Record this _____ day
 of MAY 26 1931 A.D. 192__ at
11:00 o'clock A.M. and Recorded
 in Liber 15 of Plate
 on Page 41

W. S. Mayfield, Deputy Register



essor of
 h, by virtue
 been duly
 ed in the
 'ASSESSOR'S
 E., of
 the streets
 poses.

(Seal)

Down 3 North Range 14 Oct.

1st half mile nothing and dry good 2nd
 rate last half mile about 2nd rate
 Timber W. Oak Poplar Birch Sugar
 B. Ash Elm Lym + Undergrowth
 Hemlock Fir wood

West - On Random between S 2 + 11
 36.50 Salim River 60 links course S.E.
 40.00 Set temporary half Post
 10.20 Pulled out West boundary line 11 links
 South of corner found first dry 2nd
 rate Timber W Oak Birch Poplar
 Quaking Asp. Undergrowth Hemlock

East - Corrected between S 2 + 11
 40.10 Made W section corner on ca.
 Quaking Asp 7 ins diam at average
 distance from true line
 40.20 To Section Corner
 This Random runs by the Salt Springs

South - Between Sections 11, 12
 6.50 Burr Oak 18 in diam
 11.00 made half mile corner on a Birch
 24 ins diam
 58.24 a W Oak 20 ins diam
 80.00 Set post for Section 11, 12, 13
 from which a W Oak 20 ins diam
 bears S 70 W 16 links also a W Oak 14
 ins diam bears S 34 E 37 links ditto
 1st half mile level and met 2nd rate
 last half mile level and dry good
 Timber W Oak Birch Birch B. Ash +
 Underg. on the Hemlock Hemlock

Form 3 North Range 1/4 East

West on Runners between 11414
 40.00 Saline River 73 links wide corner & mound
 Sit temporary half mile front
 80.18 Intersected West boundary line 24 links
 East of corner find front rolling and
 front obly 2nd rate timber W. Oak Buck
 B. Ash Elm Undergrowth Ironwood

East Connected between 11414

40.09 Made 14 sections corner on a Log
 14 ins diam on the West Bank of Saline
 80.18 To Section corner
 This cor on Riv from which a Log
 14 in diam West by the dist

South Between sections 14 + 13

176 Intersected Private claim
 by 26 chains West of the N.E. cor of 112 3/13
 cont. to P. Buck
 Made corner for section fractional 11413
 on a W. Oak 24 ins diam

East Between sections 14 + 12

10.37 an Elm 30 in diam
 40.00 Sit half mile front from which a
 Wick by 14 ins diam bears 88° 20'
 16 links dist also a B. Ash 14 ins diam
 bears N 58° 22' links dist
 117.74 a W Oak 10 ins diam
 113.86 Intersected Form line at the corner
 1st half mile lead and dry good 2nd
 rate the Ballance level with 1st 2nd
 rate timber W Oak Buck Sugar Elm
 Log B. Ash & Undergrowth Spice
 Ironwood 20.

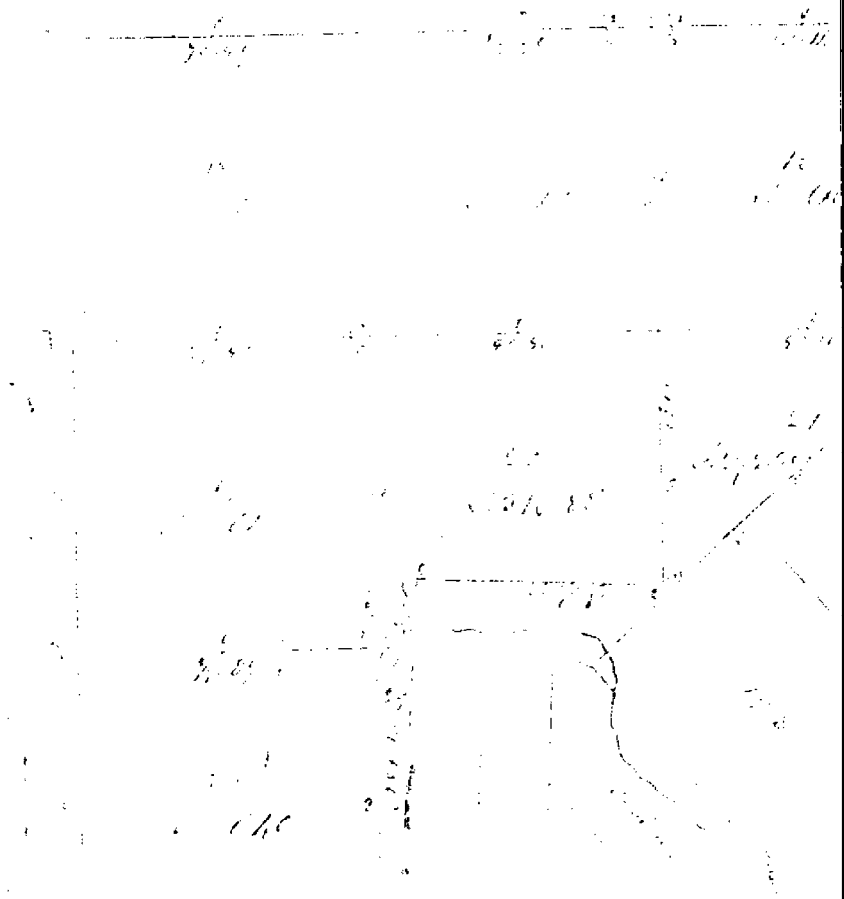
From 3 North Range 19 East -

- East - Between fractional Sections 12413
 230 Intersected Private Claims 302 chains
 East of corner of Lot N^o 343 P. Yack
 Made corner for fractional Section 12413
 on a W. Oak 24 ins diam continued
 1875 through the claims Made corner on
 a Hickory 6 ins diam 7920 chains
 North of corner of lot
 11000 Made half mile corner on a B. Oak
 11013 on Elm 30 in diam 6 ins
 11517 on W. Oak 24 ins
 10116 Intersected Private Claims 63116 chains
 North of corner of Lot N^o 614 Fran Massar
 Set post for fractional section 12413
 from which is B. Oak 10 in diam bears
 N 73 W 18 links also on Elm 12 in diam
 bears S 74 W 25 links dist 1st half mile
 rolling and dry 2nd part last half mile
 front dry 2nd part
 Timber W Oak Beech Sugar Elm
 B. Oak + Undergrowth Spruce +
 Trunks

South Between Sections 20 + 21

- 657 Beech 12 in diam
 11000 Set 74 Sec. post from which a Birch
 14 in diam bears N 50 E 111 lbs dist
 also a Beech 12 in bears S 33 W 15 lbs dist
 5903 Elm 110 ins
 6365 Intersected Private Claims N^o 193.110NE
 from the N.E. Cor. of P. Claim N^o 145 -
 Set post for cor of fractional sections
 2172 from which an Elm 20 in diam
 bears N 11 E 25 lbs dist - also an Elm
 18 in diam bears N 14 W 29 lbs dist

5	6 A. 640	8 A. 640	4 A. 640
2	60.09	71.93	80.16
2	7 A. 640	8 A. 640	9 A. 640



Range N: XIV East of the Mer. (Mich. Ter.)

