

LAND CORNER RECORDATION CERTIFICATE
Filing Requirement of Act 74, Mich. P.A. 1970

For corners in

CHESTERFIELD TOWNSHIP

MACOMB
(County)

Located In: _____ Corner Code # _____

- | | | |
|------------------------------------|--------------------------|------------|
| 1. Public Land Survey | T <u>3N</u> R <u>14E</u> | <u>K-4</u> |
| | T _____ R _____ | _____ |
| | T _____ R _____ | _____ |
| | T _____ R _____ | _____ |
| 2. Property Controlling in Section | S _____ T _____ R _____ | _____ |
| | S _____ T _____ R _____ | _____ |
| 3. Miscellaneous Property in Sec. | S _____ T _____ R _____ | _____ |
| | S _____ T _____ R _____ | _____ |

2266003
LIBER 12434 PAGE 951
 11/08/2002 09:59:36 A.M.
 MACOMB COUNTY, MI SEAL
 CARNELLA SABAUGH, REGISTER OF DEEDS

Register of Deeds Stamp & File Number

4. Lot No. _____, Recorded Plat _____
 5. Private Claims _____

I, **ROBERT H. BIRKETT**, in a field survey on July, 2002 do hereby certify that under requirements of P.A. 74, Michigan P.A. of 1970, the corner points mentioned in lines 1 and 2 above were in conformance with regulations and rules therefore as required in the current manual of survey instructions of the United States Department of the Interior, Bureau of Land Management or by a decree of a Court of Law and for that the corner points mentioned in lines 3, 4 and 5 above were in conformance with the rules of the Michigan Board of Land Surveyors or by a Decree of a Court of Law; established, re-established, monumented, re-monumented, recovered, found as expressed below:

NOTE: Not more than 2 corners, all in the same town and range, may be recorded on this certificate.

A. Description of original monument and accessories and/or subsequent restoration:

- K-4 CHESTERFIELD
 1818, PRESTON GLO, SET WOOD POST, GENERAL LAND OFFICE FILE NOTES.
 1989, DUNN No. 30081, FOUND 1/2" IRON, LCRC L. 4687, P. 432.
 1989, DUNN No. 30081, FOUND 1/2" IRON, SURVEY - UNRECORDED.
 1994, DUNN No. 30081, FOUND 1/2" IRON, LCRC L. 6932, P. 282.

B. Description of corner evidence found and/or method applied in restoring or reestablishing corner:

- K-4 FOUND 1/2" IRON AT BASE OF 40" OAK.
 RECOVERED P.K. NAIL IN SOUTH FACE 36" OAK.
 RECOVERED P.K. NAIL IN NW FACE 36" OAK.

FOLLOWING SUBDIVISION VERIFY THE EXISTING LOCATION:

- "WASHINGTON MEADOWS SUBDIVISION", KHATRI No. 18997, L. 130, P. 29 - 32 OF PLATS.
 "WINDRIDGE ESTATES SUBDIVISION", MONEY No. 30092, L. 152, P. 26 - 42 OF PLATS.

FIELD MEASUREMENTS

- K-4 TO K-3 : 2697.53' REMON (2002), 2697.09' (CALCULATED) DUNN (1989), 40 CHAINS (2640.00') GLO (1818).
 K-4 TO K-5 : 2693.28' REMON (2002), 40 CHAINS (2640.00') GLO (1818).

C. Description of monument for corner and accessories established to perpetuate locating the position of the corner:

- K-4 PLACED AN ALUMINUM CAP STAMPED "MACOMB COUNTY MONUMENT, MI ACT 345, K-4, 41094," ON FOUND 1/2" IRON.

- 105° - 53.36' - SET NAIL WITH REMON TAG IN NORTH FACE 48" OAK.
 190° - 8.95' - SET NAIL WITH REMON TAG IN EAST FACE 36" OAK.
 275° - 33.86' - SET NAIL WITH REMON TAG AT SCAR IN NORTH FACE 30" OAK.
 295° - 1.40' - SET NAIL WITH REMON TAG AT SCAR IN SOUTH FACE 40" OAK.

ACCEPTED BY THE MACOMB COUNTY SURVEY PEER BOARD AS THE OFFICIAL CORNER UNDER MICHIGAN PUBLIC ACT 345 OF 1990 AT A MEETING HELD

William E. Soderberg
 WILLIAM E. SODERBERG, P.S., CHAIRMAN

THE SELECTED LOCATION IS ACCEPTED BY ME AND IS GENERALLY ACCEPTED BY PROFESSIONAL SURVEYORS AS THE BEST AVAILABLE EVIDENCE OF THE POSITION OF THE ORIGINAL CORNER.

Signed by Robert H. Birkett Date 10/25/02
 Surveyor's Michigan License No. 41094

	A	B	C	D	E	F	G	H	I	J	K	L	M
1													
2	6	5	4	3	2	1							
3													
4	7	8	9	10	11	12							
5													
6	18	17	16	15	14	13							
7													
8	19	20	21	22	23	24							
9													
10	30	29	28	27	26	25							
11													
12	31	32	33	34	35	36							
13													



Carmella Sabaugh

MACOMB COUNTY
CLERK/REGISTER OF DEEDS

REMONUMENTATION PROGRAM
MARTIN C. DUNN, SURVEYOR REPRESENTATIVE
OFFICE: (586) 469-7916 + CELLULAR: (610) 217-7275

COPY

December 10, 2003

Mr. Maynard R. Dyer, P.S.
Bureau of Construction Codes, Survey and Remonumentation Grant Program
Michigan Department of Consumer & Industry Services
6546 Mercantile Way, P.O. Box 30704
Lansing, MI 48909

Dear Mr. Dyer,

In response to your correspondence dated November 17, 2003, the following state plane coordinate records for 2002 have been entered into the Corner Index System:

Shelby Township (T3N, R12E): C-2, E-2, F-3, G-2, H-3, J-3, K-2, K-4, K-6, K-8, L-3, L-5, L-7.

Washington Township (T4N, R12E): A-2, A-3, A-4, A-5, A-6, A-7, A-8, A-9, A-10, A-11, A-12, A-13, B-3, B-5, B-7, B-9, B-13, C-4, C-5, C-6, C-7, C-8, C-9, C-10, C-11, C-12, C-13, C-14, D-1, D-5, D-7, D-9.

Also, in response to your correspondence dated November 17, 2003, please find enclosed copies of the following Land Corner Recordation Certificates for 2002:

Armada Township (T5N, R13E): B-1, C-1, D-1, E-1, F-1, G-1, H-1, I-1, J-1, K-1, L-1.

Chesterfield Township (T3N, R14E): K-2, K-4, K-8, PCC-009, PCC-010, PCC-011, E-4, E-8, G-4, M-6.

Erin (T1N, R13E): E-7, E-9, F-9.

Ira Township (T3N, R15E): A-6.

Lenox Township (T4N, R14E): H-1, I-1, K-1, K-2, L-1, L-4.

Ray Township (T4N, R13E): B-7, B-8, C-7, C-8, D-7, E-7, E-8, F-7, F-8.

Richmond Township (T5N, R14E): H-13, I-13, J-13, K-13, L-13.

[HTTP://WWW.CO.MACOMB.MI.US](http://www.co.macomb.mi.us)

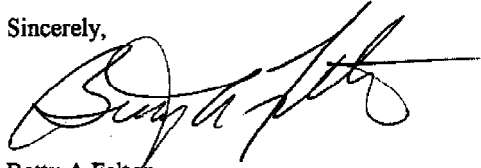
FAX-ON-DEMAND
MICHIGAN: (888) 99-CLERK
OUT-OF-STATE: (310) 575-5035

Warren (T1N, R12E): F-11, G-11, G-12, H-11, I-11, I-12, J-11.

Washington Township (T4N, R12E): A-10.

All above referenced Land Corners and Land Corner Recordation Certificates have been entered into the Corner Index System. If you have any questions, please contact our office at 586-469-7916 or 586-469-6752.

Sincerely,

A handwritten signature in black ink, appearing to read "Betty A. Felton". The signature is fluid and cursive, with a long horizontal stroke extending to the right.

Betty A Felton
Macomb County Grant Administrator
Enc/md/ks

216-0272
7-8-02

2002 Remon

BNS, JES K-4 Chesterfield

Find 1/2" iron in Base of
40" Oak

295° 1.40'

Set P.K. with remon tag
in 40" Oak S. face

275° 33.86'

Set P.K. Nail with remon
tag in 30" Oak N. face

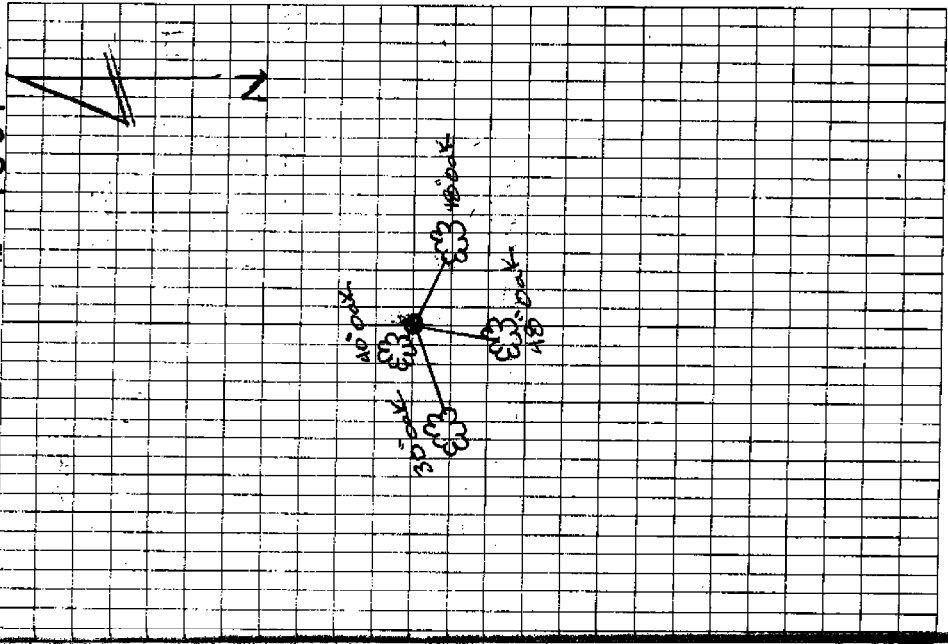
190° 8.95'

Set P.K. with remon tag
in E. face 30" Oak

105° 53.36'

Set P.K. with remon tag
in N. face 48" Oak

Mo 1937



223-022
7-8-02
BMS 386

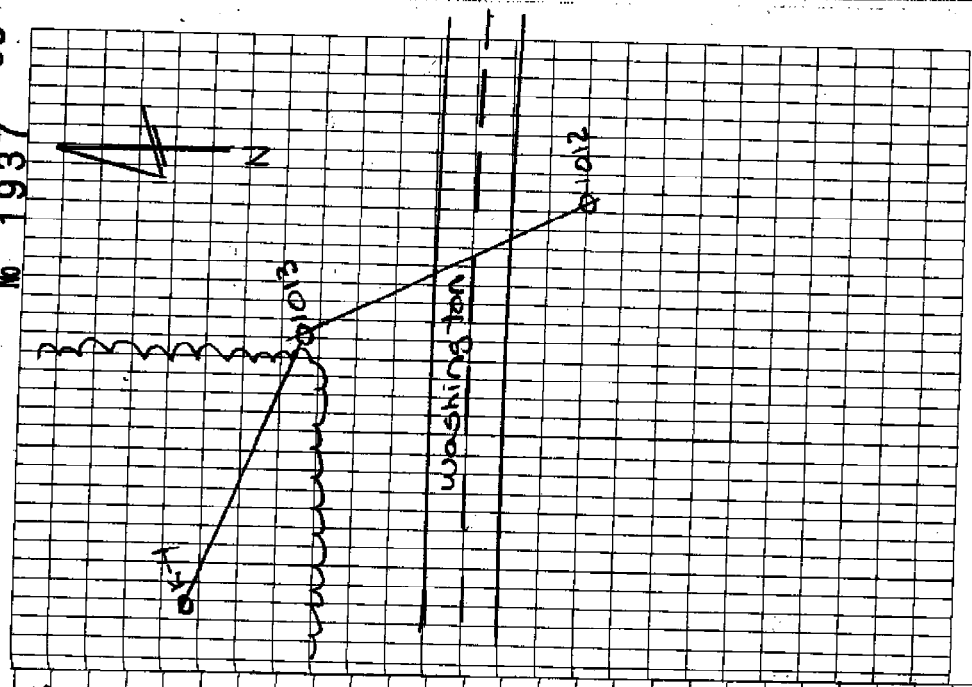
2002 Zeman

K=4 Angles
Hof. A Dist

Mo 1937

33

Pl #	Hof. A	Dist	Remarks
		1013 → 1012	
F1	0-00-03		
F2	180-00-02		
Avg.	10-00-02		
1012	00-00-00	258.68	
F1	120-19-51		
F2	300-19-55		
Avg.	120-19-53		
1014	120-19-57	376.02	
1012	0-00-06	258.68	



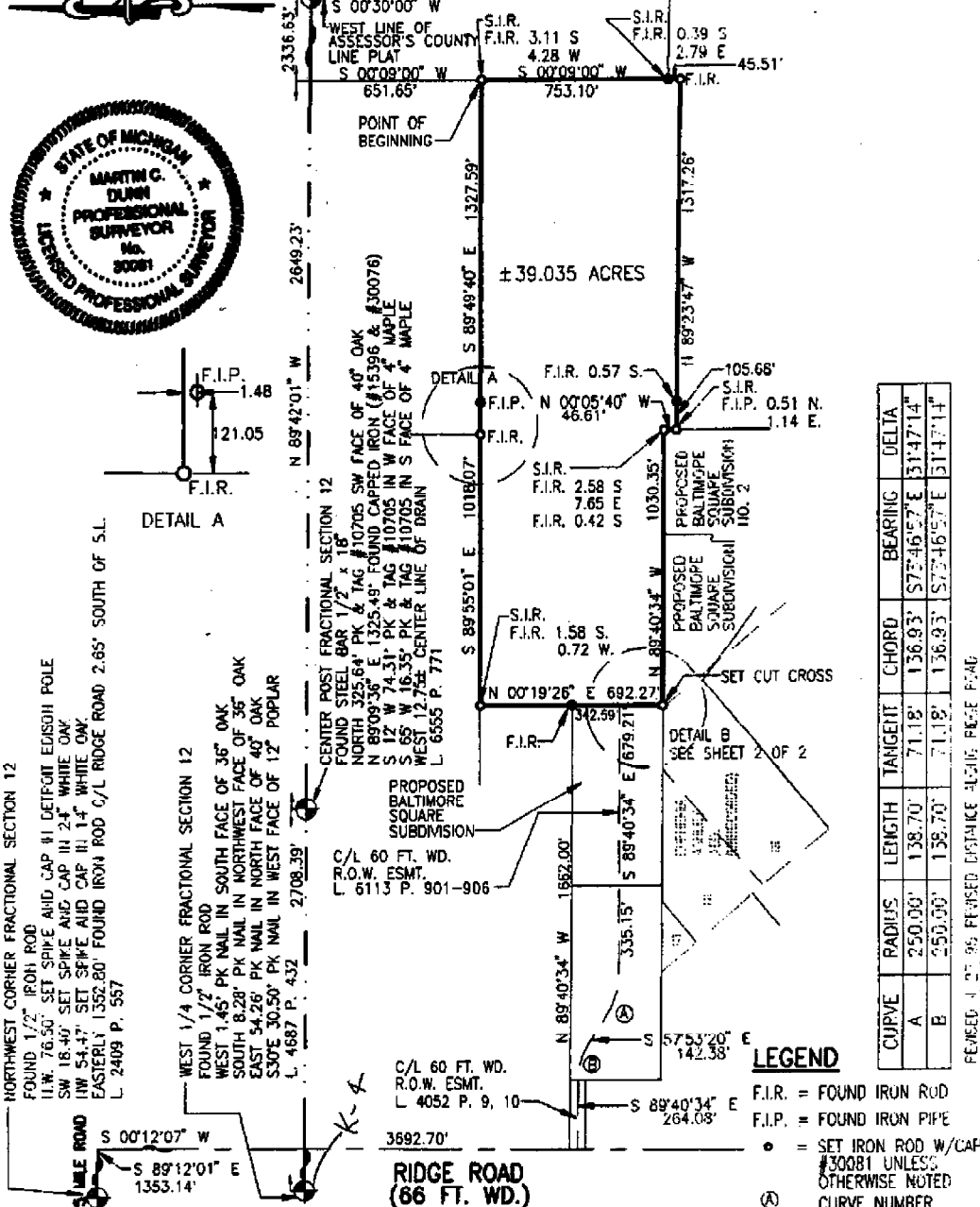
CERTIFICATE OF SURVEY

METCO SERVICES, INC.
 12504 STEPHENS WARREN, MI 48089
 PHONE NUMBER (810) 755-5770
 FAX NUMBER (810) 755-5774

EAST 1/4 CORNER FRACTIONAL SECTION 12
 FOUND AXLE SHAFT IN MONUMENT BOX
 N16°E 147.65' FOUND REGULAR NAIL WITH TAG "RLS123" IN
 WEST FACE OF UTILITY POLE
 S22°E 70.00' SET PK NAIL IN WEST FACE OF UTILITY POLE
 N87°W 37.30' FOUND REGULAR NAIL WITH TAG "RLS 123" IN
 SOUTH SIDE OF ABANDONED UTILITY POLE
 N43°W 62.00' SET PK NAIL IN EAST FACE OF TRIPLE STEM MAPLE



COUNTY LINE ROAD (66 FT. WD.)



CURVE	RADIUS	LENGTH	TANGENT	CHORD	BEARING	DELTA
A	250.00'	138.70'	71.18'	136.93'	S73°46'57" E	31°47'14"
B	250.00'	138.70'	71.18'	136.93'	S73°46'57" E	31°47'14"

REVISED 11-17-95 REVERSE DISTANCE ALONG POLE FLAG

C0339341 LIBER:06985 PAGE:364 09:17A 04/19/1996
 CARMELLA SARAUGH-MACOMB COUNTY, MI REG/DEEDS

LEGEND

- F.I.R. = FOUND IRON ROD
- F.I.P. = FOUND IRON PIPE
- = SET IRON ROD W/CAP #30081 UNLESS OTHERWISE NOTED
- Ⓐ = CURVE NUMBER

CERTIFY TO: BUY-RAMA, INC.
 ADDRESS: 36335 GREEN
 CITY, STATE & ZIP: NEW BALTIMORE, MI 48047
 CITY/TWP: NEW BALTIMORE SEC./P.C.: 12 COUNTY: MACOMB
 DATE: 2-14-95 DRAWN BY: A. MILLER
 JOB NO.: 94-114 SHEET NO.: 1 OF 3
 SCALE: 1" = 500'
 BOOK NO.: 183 PAGE: 74

I hereby certify that I have surveyed and mapped the land above and/or described on 10/28/94 and that the ratio of closure on the unadjusted field observations of such survey was 1/80052 and that all of the requirements of Public Act 132, 1970 have been complied with. Bearings are based on the east line of "Assessor's County Line Plat" of part of fractional sections 7 and 18 PC 614 and PC 627 T.34, R.15E, City of New Baltimore, St. Clair County, now Macomb County, Michigan recorded in Liber 55 of Plots Page 20, S.C.C.R.

Martin C. Dunn
 MARTIN C. DUNN LICENSED LAND SURVEYOR #30081

1172

K-4

LIBER 04687 PG 432

B376998

LAND CORNER RECORDATION CERTIFICATE
Filing Requirement of Act 74, Mich. P.A. 1970

RECORDED IN MACOMB COUNTY
RECORDS AT: 10:23A.M.

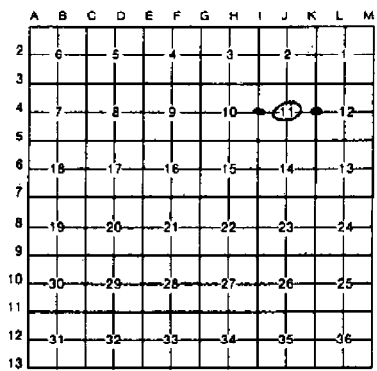
JUL 21 1989

Edna M. Hill

CLERK - REGISTER OF DEEDS
MACOMB COUNTY, MICHIGAN

Register of Deeds Stamp & File Number

Form with fields for 'For corners in Macomb', 'Chesterfield Township', 'Located In:', 'Corner Code #', and numbered sections 1-5.



I, Martin C. Dunn, in a field survey on June 1, 1989, do hereby certify that under requirements of P.A. 74, Michigan P.A. of 1970, the corner points mentioned in lines 1 and 2 above were in conformance with regulations and rules therefore as required in the current manual of survey instructions of the United States Department of the Interior, Bureau of Land Management or by a decree of a Court of Law and/or that the corner points mentioned in lines 3, 4 and 5 above were in conformance with the rules of the Michigan Board of Land Surveyors or by a Decree of a Court of Law; established, re-established, monumented, re-monumented, recovered, found as expressed below:

NOTE: Not more than 4 corners, all in the same town and range, may be recorded on this certificate.

A. Description of original monument and accessories and/or subsequent restoration:

B. Description of corner evidence found and/or method applied in restoring or reestablishing corner:

- I-4, W 1/4 Corner Section 11, Found 1" Iron Pipe
J-4, Center Post Section 11, Set 1/2" iron Rod with Cap #30081 at the intersection of opposite 1/4 Corners
K-4, E 1/4 Corner Section 11, Found 1/2" Iron Rod



C. Description of monument for corner and accessories established to perpetuate locating the position of the corner:

- I-4, W 1/4 Corner: 1. N 20° E 8.97, Set P.K. Nail, W face 12" Oak; 2. S 80° E 18.08, Set P.K. Nail, E face 14" Oak; 3. South 7.15, Set P.K. Nail, E face 8" Maple; 4. S 30° W 28.34, Set P.K. Nail, E face 22" Hickory
K-4, E 1/4 Corner: 1. West 1.45, Set P.K. Nail, S face 36" Oak; 2. South 8.28, Set P.K. Nail, NW face 36" Oak; 3. East 54.26, Set P.K. Nail, N face 40" Oak; 4. S 30° E 39.50, Set P.K. Nail, W face 12" Poplar
J-4, Center Post: 1. East 13.59, Set P.K. Nail, S face 30" Oak; 2. West 15.30, Set P.K. Nail, S face 10" Hickory; 3. N 45° E 10.90, Set P.K. Nail, SE face 6" Maple; 4. S 45° W 17.43, Set P.K. Nail, SE face 8" Elm

Signed by Martin C. Dunn Date 7/21/89

Surveyor's Michigan License No. 30081

01438

CERTIFICATE OF SURVEY

DUNN & ASSOCIATES LAND SURVEYORS, INC.

MACOMB MEWS BLDG., 7 N. GRATIOT AVE., SUITE 208, MT. CLEMENS, MI 48058

PHONE NUMBER
(313) 465-5553

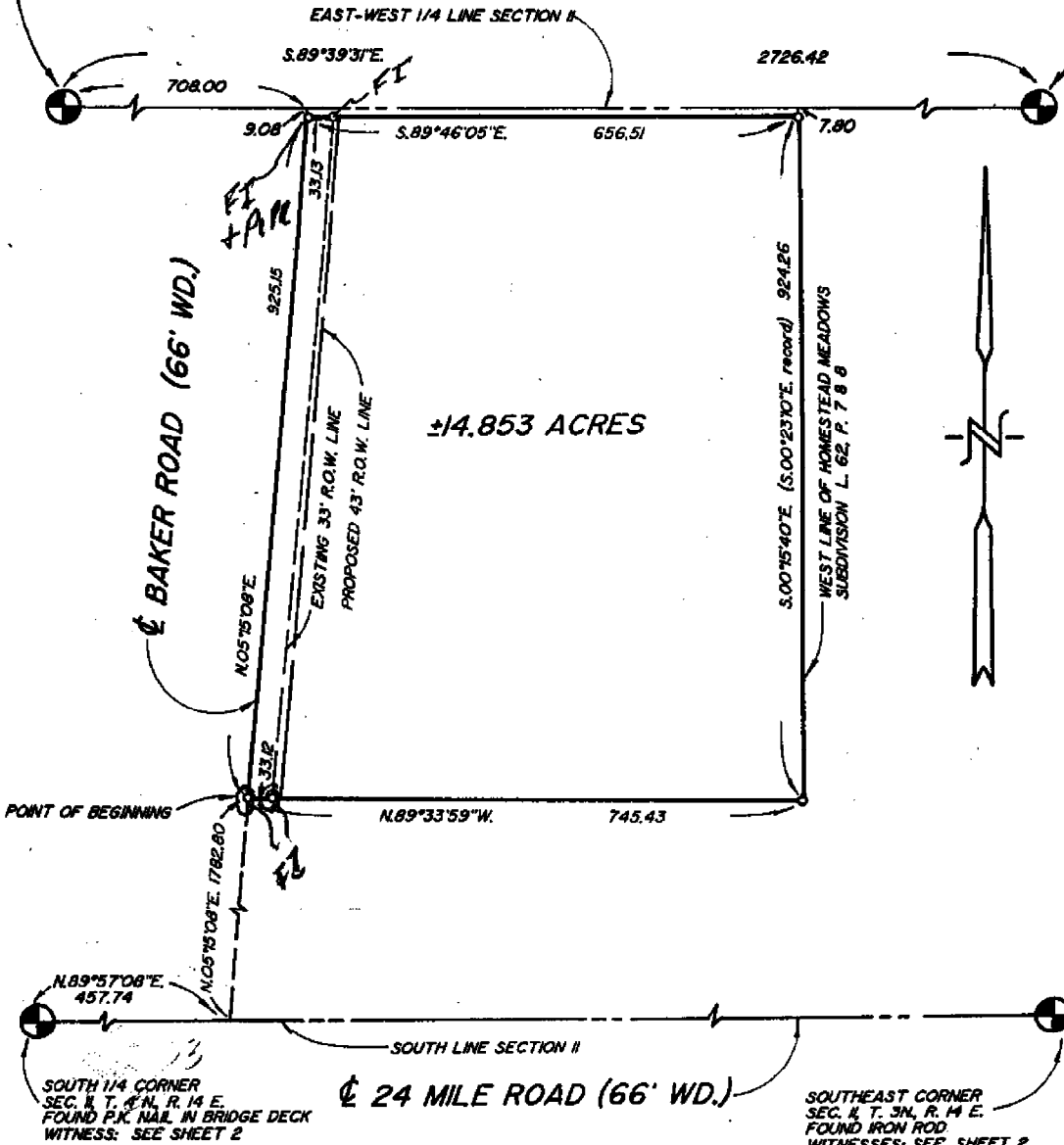
CENTER POST SECTION II, T. 3 N., R. 14 E.
SET 1/2" IRON ROD WITH CAP #30081

- WITNESSES:
- 1) EAST 13.59, SET P.K. NAIL S FACE 30" OAK
 - 2) WEST 15.30, SET P.K. NAIL S FACE 10" HICKORY
 - 3) N 45° E 12.90, SET P.K. NAIL SE FACE 6" MAPLE
 - 4) S 45° W, 17.43, SET P.K. NAIL SE FACE 8" ELM

EAST 1/4 CORNER SEC. II, T. 3 N., R. 14 E.
FOUND 1/2" IRON ROD

- WITNESSES:
- 1) WEST 1.45, SET P.K. NAIL S FACE 36" OAK
 - 2) SOUTH 8.28, SET P.K. NAIL NW FACE 36" OAK
 - 3) EAST 54.26, SET P.K. NAIL N FACE 40" OAK
 - 4) S 30° E 39.50, SET P.K. NAIL W FACE 12" POPLAR

NOTE: ○ INDICATES SET IRON ROD WITH CAP #30081 UNLESS OTHERWISE NOTED



SMITH MACOMB ASSOCIATION
 CERTIFY TO: BLUE WATER TITLE COMPANY
 ADDRESS: 38285 W. 12 MILE ROAD
 CITY, STATE & ZIP: FARMINGTON HILLS, MICHIGAN
 TWP: CHESTERFIELD SEC: II COUNTY: MACOMB
 DATE: 6-4-89 DRAWN BY: SJD
 JOB NO.: 89-089 SHEET NO.: 1 OF 2
 SCALE: 1" = 200'

I hereby certify that I have surveyed and mapped the land above and/or described on JUNE 6, 1989 and that the ratio of closure on the unadjusted field observations of such survey was 1/14,314 and that all of the requirements of Public Act 132, of 1970 have been complied with. ALL BEARINGS ARE RELATED TO THE WEST LINE OF "SUPERVISOR HOOKER FARM SUB-DIVISION" L. 23, P. 5 M.C.R.

MARTIN C. DUNN LICENSED LAND SURVEYOR #30081

BOOK NO.: 46 PAGE: 27-33

25 MILE New Baltimore

RD. Line

1006.17

Corp.

68.05 272 -013	120.36 273 -014	81.58 274-015	498.87 70 275-016	70 276-017
130.11	115.65	122.19	121.47	120.75
116.64	52.73	64.92		

BRADSHAW

271-012 118.39	270-011 118.40	269-010 118.41	268-009 118.41	267-008 118.42	266-007 118.43	265-006 118.43	264-005 118.44	263-004 118.45	262-003 118.46	261-002 145.46	146-001 118.57
110	120	120	120	120	120	120	120	120	120	120	120
284-008	285-009	286-010	287-011	288-012	289-013	290-014	291-015	292-016	293-017	294-018	295-019
110	120	120	120	120	120	120	120	120	120	120	120
284-008	285-009	286-010	287-011	288-012	289-013	290-014	291-015	292-016	293-017	294-018	295-019

DURRELL

297-021	298-022	299-023	300-024	301-025
120	120	120	120	120
297-021	298-022	299-023	300-024	301-025

CRANMER

259-011	260-010	246-002	247-003
120	120	120	120
259-011	260-010	246-002	247-003

ROCKINGHAM

147-001	148-002	144-001	143-002	142-003	245-021	244-022	235-030
118.80	118.12	120	120	120	120	120	123.58
147-001	148-002	144-001	143-002	142-003	245-021	244-022	235-030

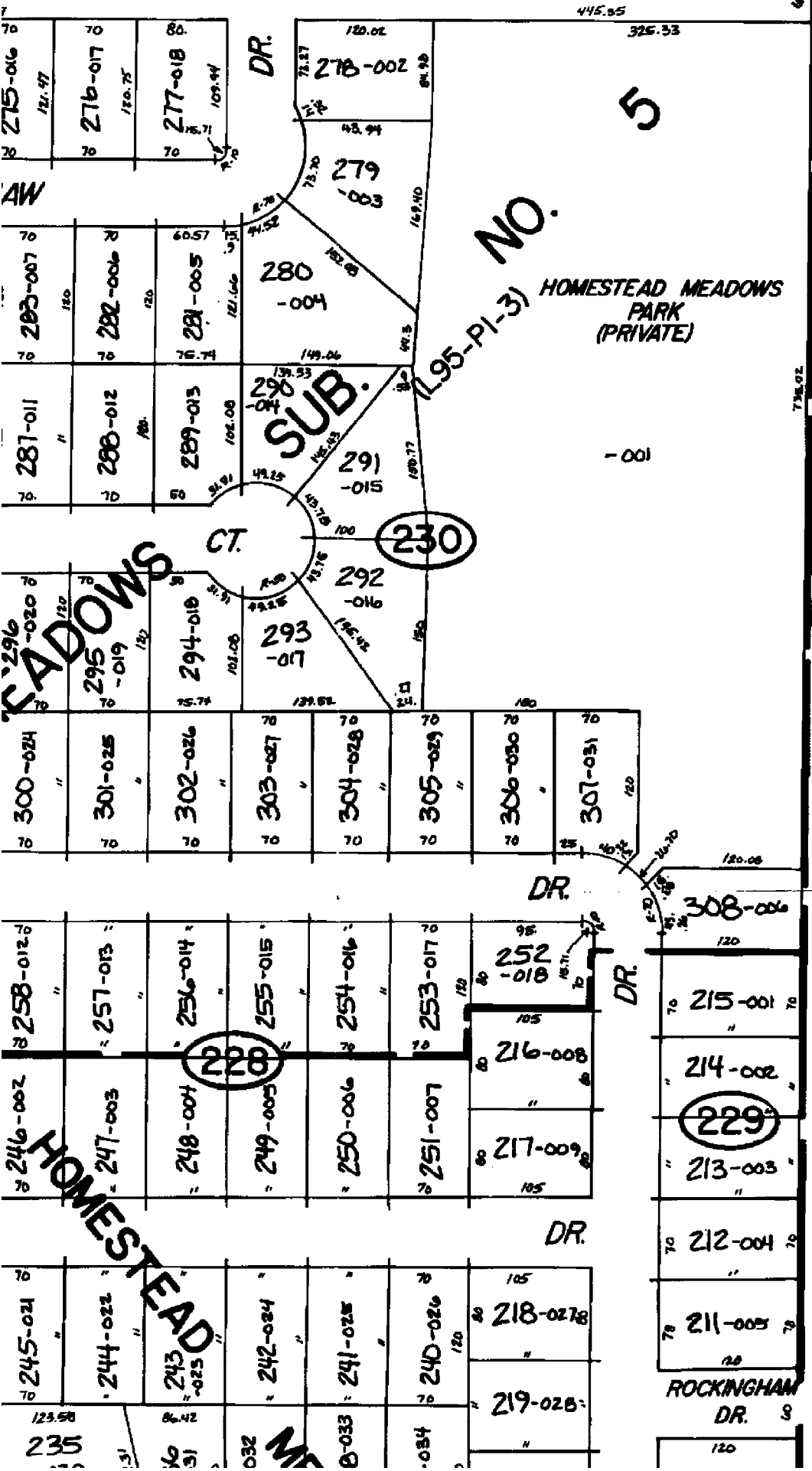
HOMESTEAD MEADOWS

HOMESTEAD

2
40

9-2H

Corp.



5

NO.

(L95-PI-3) HOMESTEAD MEADOWS PARK (PRIVATE)

SUB.

CT.

(230)

HOMESTEAD MEADOWS

HOMESTEAD

308-006

215-001

214-002

(229)

213-003

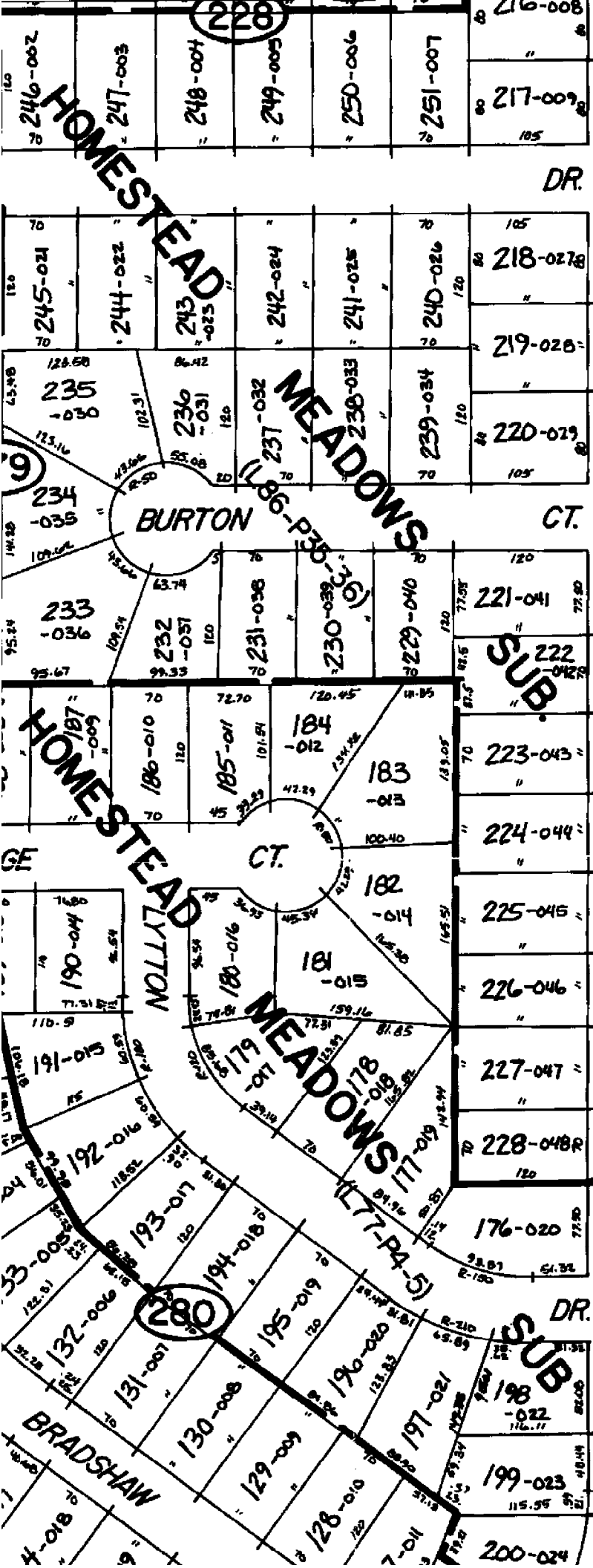
212-004

211-005

ROCKINGHAM DR.

(228)

Pl. - P. 3



216-008
217-009
218-028
219-028
220-029
221-041
222-042
223-043
224-044
225-045
226-046
227-047
228-048
176-020
175-006
174-007
173-008
172-009
171-010

22

Pt.
Pt.

PLAT

NO.

NO.

HOMESTEAD

MEADOWS

BURTON CT.

HOMESTEAD

MEADOWS

BRADSHAW

DR.

CT.

DR.

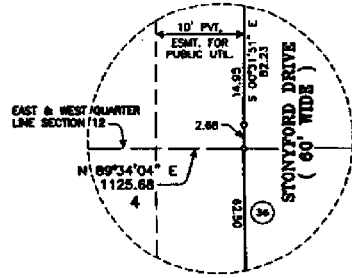
280

281

229

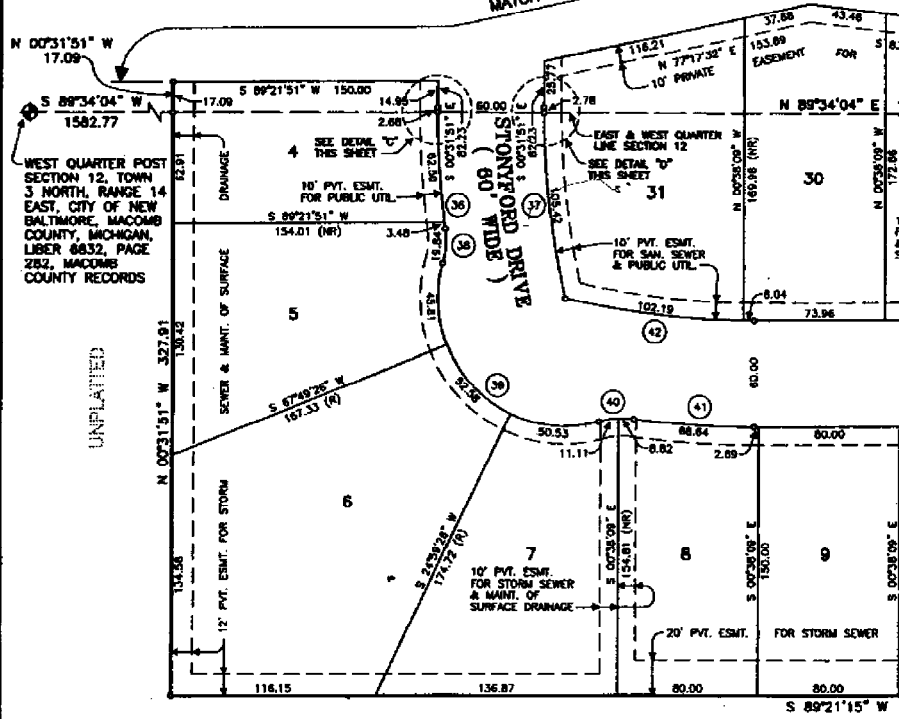
WINDRIDGE ESTATES SUBDIVIS

PART OF THE NORTHEAST, NORTHWEST, SOUTH
 QUARTERS OF SECTION 12, TOWN 3 NORTH, RA
 CITY OF NEW BALTIMORE, MACOMB COUNTY, MI



DETAIL "C"
 SCALE: 1" = 10'

MATCH LINE SEE SHEET 9 OF 17



UNPLATED

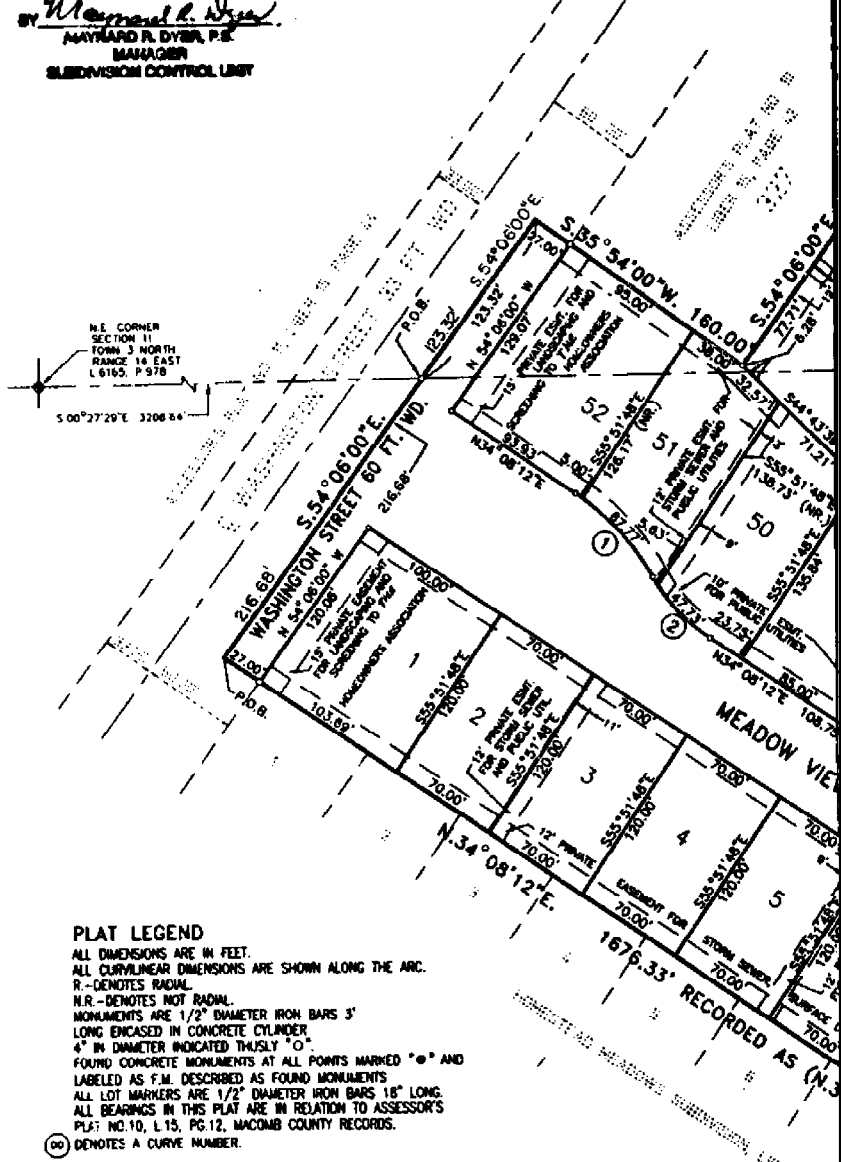
UNPLATE

CURVE TABLE						
CURVE	RADIUS	LENGTH	TANGENT	CHORD	BEARING	DELTA
36	530.00	68.69	34.39	68.84	S 04°14'37" E	72°5'32"
37	470.00	108.43	54.46	108.19	S 07°08'24" E	13°13'05"
38	50.00	19.97	10.12	19.94	S 03°28'04" E	22°52'53"
39	72.00	152.07	127.30	125.34	S 45°34'00" E	121°10'01"
40	50.00	19.97	10.12	19.94	S 68°20'34" W	22°52'53"
41	530.00	68.69	34.39	68.84	S 88°53'23" E	72°5'32"
42	470.00	108.43	54.46	108.19	S 84°01'37" E	13°13'05"

E:\LI152\PO37.tif

EXAMINED AND APPROVED
 DATE Aug 27, 1998
 BY DEPARTMENT OF CONSUMER
 AND INDUSTRY SERVICES
 BY Waymond R. Dyer
 MAYNARD R. DYER, P.E.
 MANAGER
 SUBDIVISION CONTROL UNIT

PART OF THE E.
 TOWN 3 NORTH



PLAT LEGEND
 ALL DIMENSIONS ARE IN FEET.
 ALL CURVILINEAR DIMENSIONS ARE SHOWN ALONG THE ARC.
 R. - DENOTES RADIAL.
 N.R. - DENOTES NOT RADIAL.
 MONUMENTS ARE 1/2" DIAMETER IRON BARS 3' LONG ENCASED IN CONCRETE CYLINDER 4" IN DIAMETER INDICATED THUSLY "O".
 FOUND CONCRETE MONUMENTS AT ALL POINTS MARKED "O" AND LABELED AS F.M. DESCRIBED AS FOUND MONUMENTS.
 ALL LOT MARKERS ARE 1/2" DIAMETER IRON BARS 18" LONG.
 ALL BEARINGS IN THIS PLAT ARE IN RELATION TO ASSESSOR'S PLAT NO. 10, L. 15, PG. 12, MACOMB COUNTY RECORDS.
 (OO) DENOTES A CURVE NUMBER.

CURVE DATA

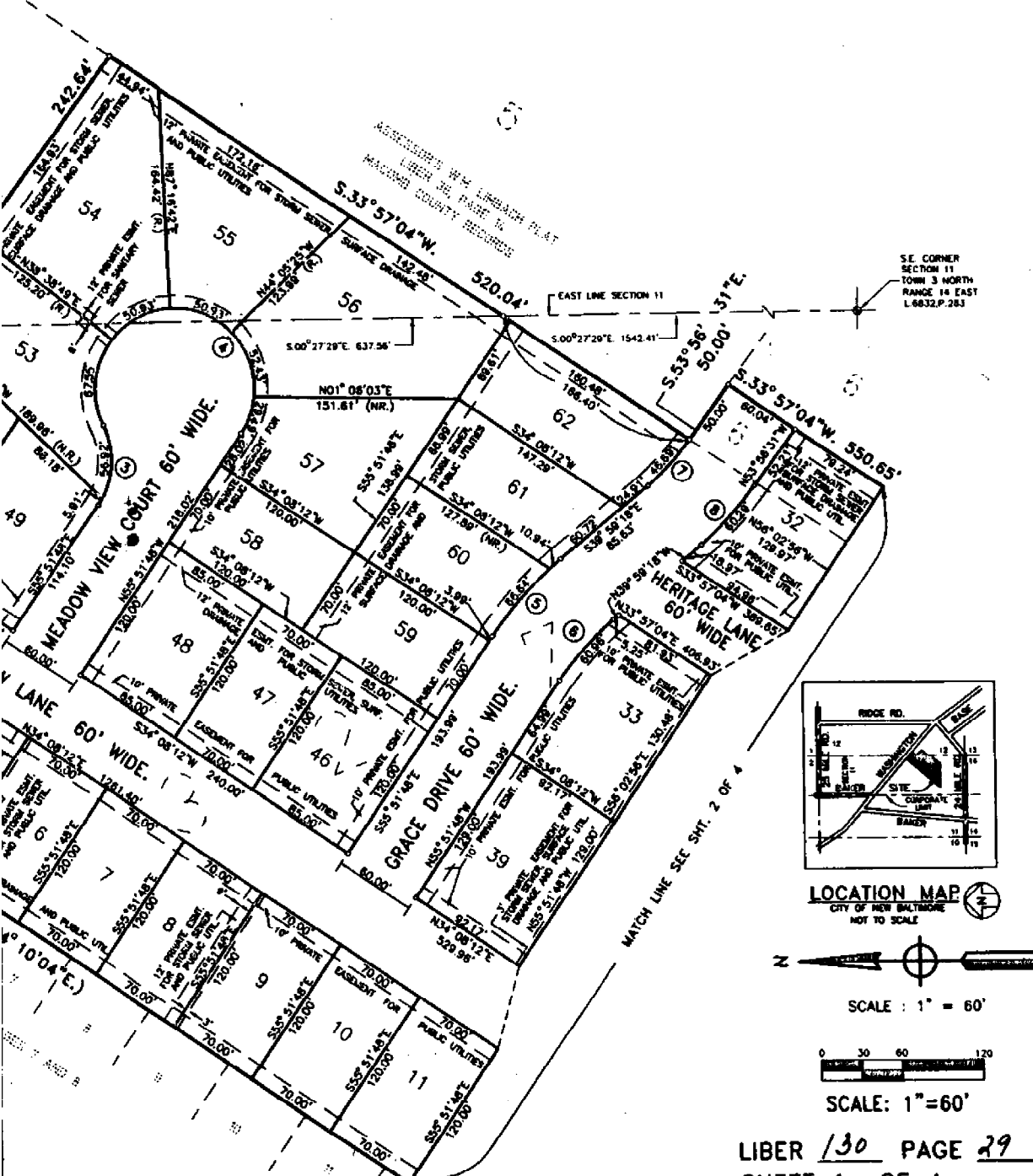
CURVE NO.	RADIUS	DELTA	LENGTH	CHORD	CHORD BEARING
1	150.00'	27° 49' 05"	72.77'	72.06'	N. 48° 02' 04" E.
2	110.00'	29° 29' 57"	53.36'	56.01'	S. 47° 12' 19" W.
3	60.00'	60° 00' 00"	62.83'	60.00'	S. 85° 51' 48" E.
4	60.00'	240° 00' 00"	251.33'	103.92'	S. 04° 08' 12" W.
5	280.00'	15° 52' 30"	77.58'	77.33'	S. 47° 55' 33" E.
6	220.00'	15° 52' 30"	60.96'	60.76'	S. 47° 55' 33" E.
7	225.00'	11° 53' 27"	46.69'	46.61'	S. 47° 59' 48" E.
8	285.00'	12° 07' 15"	60.29'	60.18'	S. 47° 52' 54" E.



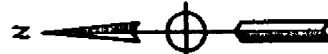
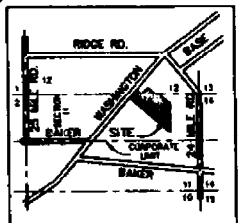
RESTRICTIONS

WASHINGTON MEADOW SUBDIVISION

1/2 OF S.E. 1/4 SECTION 11 AND N.W. 1/4 OF FRACTIONAL SECTION 12,
RANGE 14 EAST, CITY OF NEW BALTIMORE, MACOMB COUNTY, MICHIGAN



S.E. CORNER SECTION 11
TOWN 3 NORTH
RANGE 14 EAST
L.6832.P.283

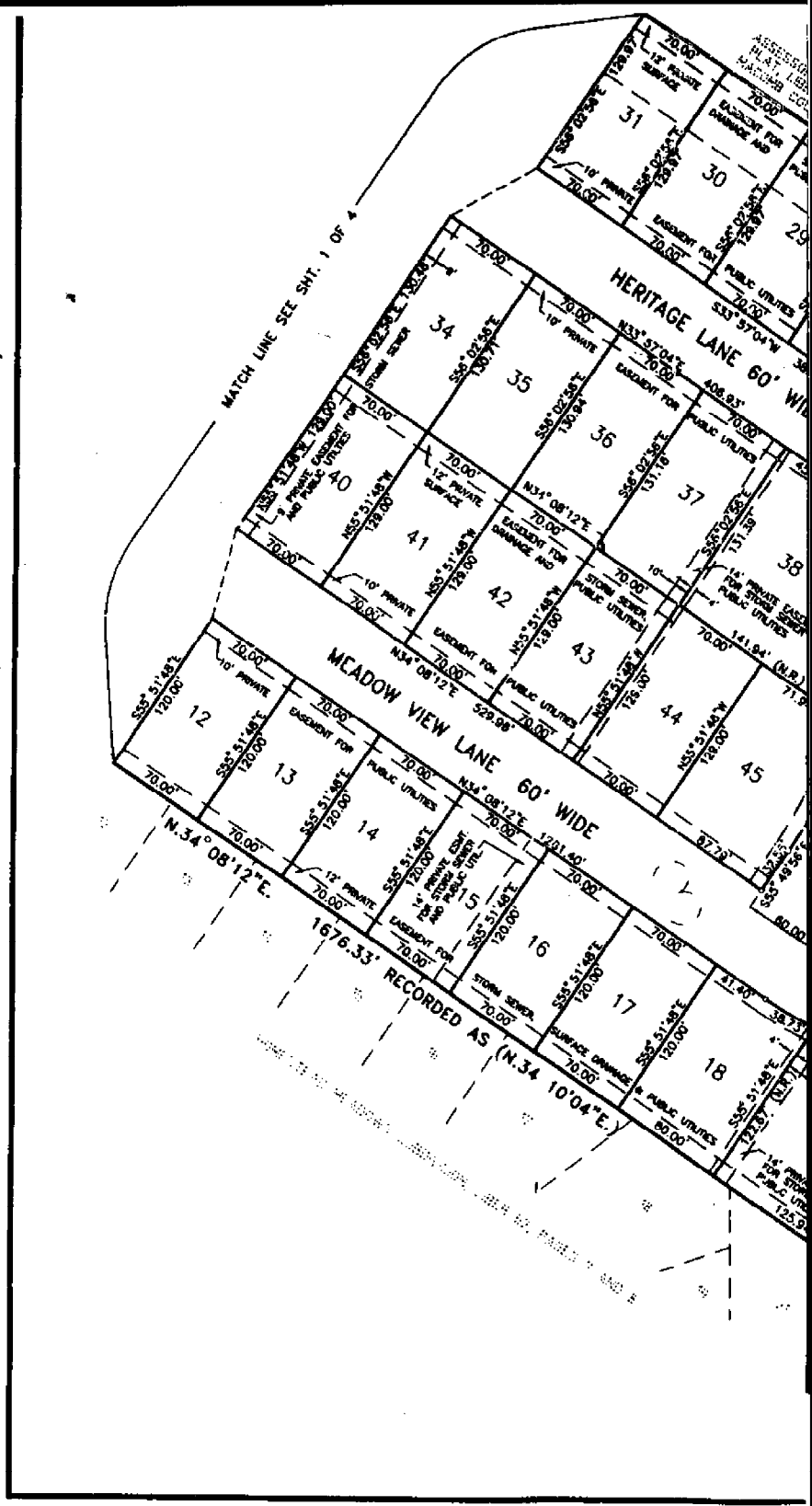


SCALE : 1" = 60'



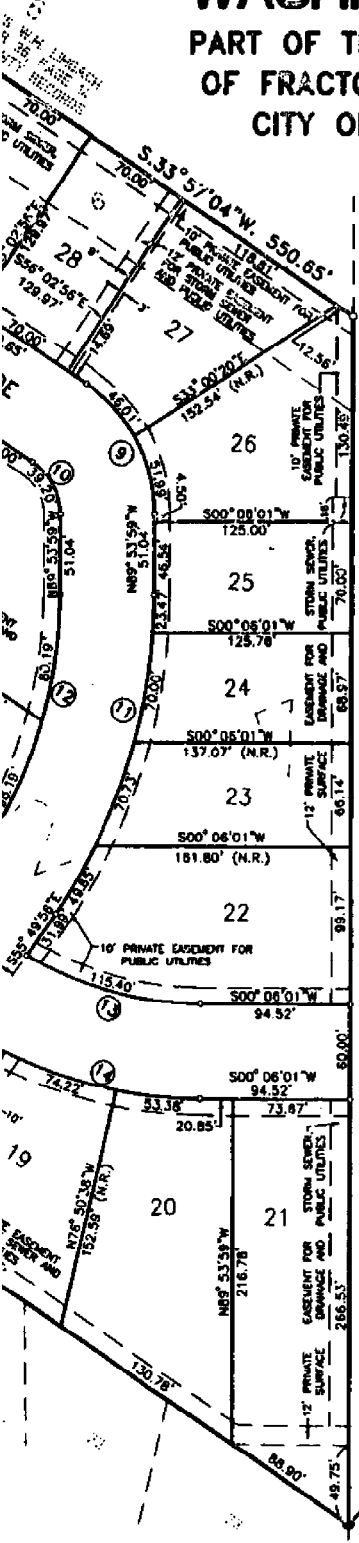
SCALE: 1"=60'

LIBER 130 PAGE 29
SHEET 1 OF 4



WASHINGTON MEADOW SUBDIVISION

PART OF THE E. 1/2 OF S.E. 1/4 SECTION 11 AND N.W. 1/4 OF FRACTIONAL SECTION 12, TOWN 3 NORTH, RANGE 14 EAST, CITY OF NEW BALTIMORE, MACOMB COUNTY, MICHIGAN

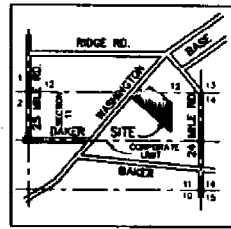


PLAT LEGEND

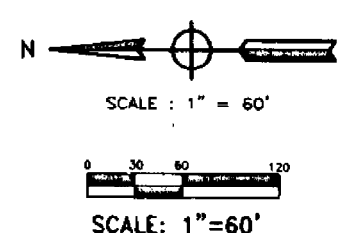
ALL DIMENSIONS ARE IN FEET.
 ALL CURVILINEAR DIMENSIONS ARE SHOWN ALONG THE ARC.
 R.—DENOTES RADIAL.
 N.R.—DENOTES NOT RADIAL.
 MONUMENTS ARE 1/2" DIAMETER IRON BARS 3' LONG ENCASED IN CONCRETE CYLINDER 4" IN DIAMETER INDICATED THUSLY "O".
 FOUND CONCRETE MONUMENTS AT ALL POINTS MARKED "O" AND LABELED AS F.M. DESCRIBED AS FOUND MONUMENTS.
 ALL LOT MARKERS ARE 1/2" DIAMETER IRON BARS 18" LONG.
 ALL BEARINGS IN THIS PLAT ARE IN RELATION TO ASSESSOR'S PLAT NO.10, L.15, PG.12, MACOMB COUNTY RECORDS.
 (OO) DENOTES A CURVE NUMBER.

CURVE DATA

CURVE NO.	RADIUS	DELTA	LENGTH	CHORD	CHORD BEARING
9	100.00'	56°08'57"	98.00'	94.12'	N.62°01'32"E.
10	40.00'	56°08'57"	39.20'	37.65'	N.62°01'33"E.
11	360.00'	34°04'03"	214.05'	210.91'	N.72°51'57"W.
12	300.00'	34°04'03"	178.38'	175.78'	N.72°51'57"W.
13	220.00'	30°03'19"	115.40'	114.09'	S.15°07'41"W.
14	280.00'	34°02'11"	166.33'	163.90'	S.17°07'06"W.



LOCATION MAP
 CITY OF NEW BALTIMORE
 NOT TO SCALE



LIBER 130 PAGE 30
 SHEET 2 OF 4

9-11D

WASHINGTON

427

430

ASSESSORS PLAT (L15-P43-44)

9" SUBWAY

WAY

DR.

LANE

MEADOWS

RD. 60

TYNE CT. (L62-P7-8)

MEADOW

MEADOW VIEW

GRACE

114-022

113-023

14-014

15-015

120-016

12-012

13-013

14-014

15-015

94-008

95-007

96-006

97-005

98-004

99-003

100-002

101-001

102-000

103-000

104-001

105-002

106-003

107-004

108-005

109-006

110-007

111-008

112-009

113-010

114-011

115-012

116-013

117-014

118-015

119-016

120-017

121-018

122-019

123-020

124-021

125-022

126-023

127-024

128-025

129-026

130-027

131-028

132-029

133-030

134-031

135-032

136-033

137-034

138-035

139-036

140-037

141-038

142-039

143-040

144-041

145-042

146-043

147-044

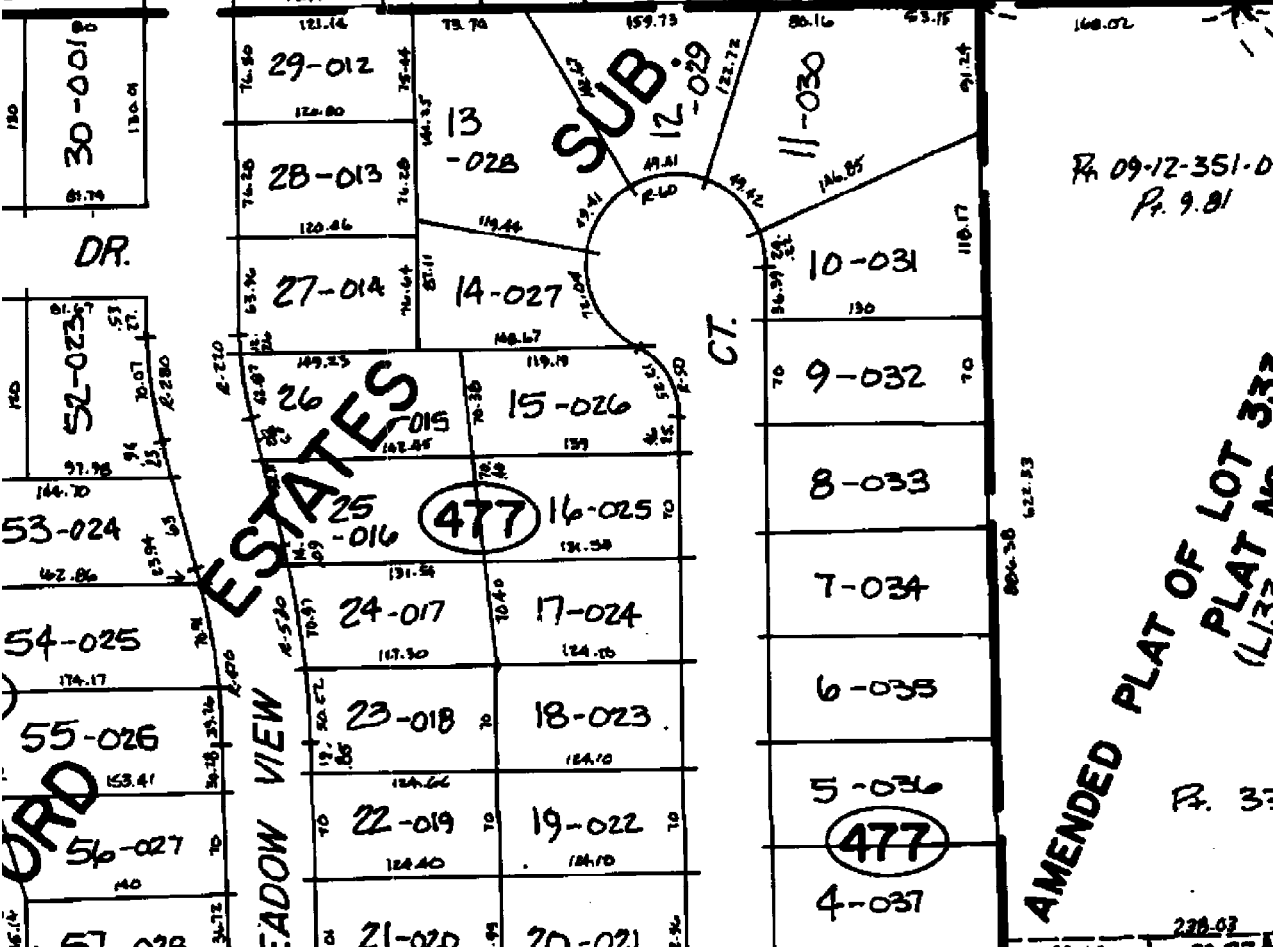
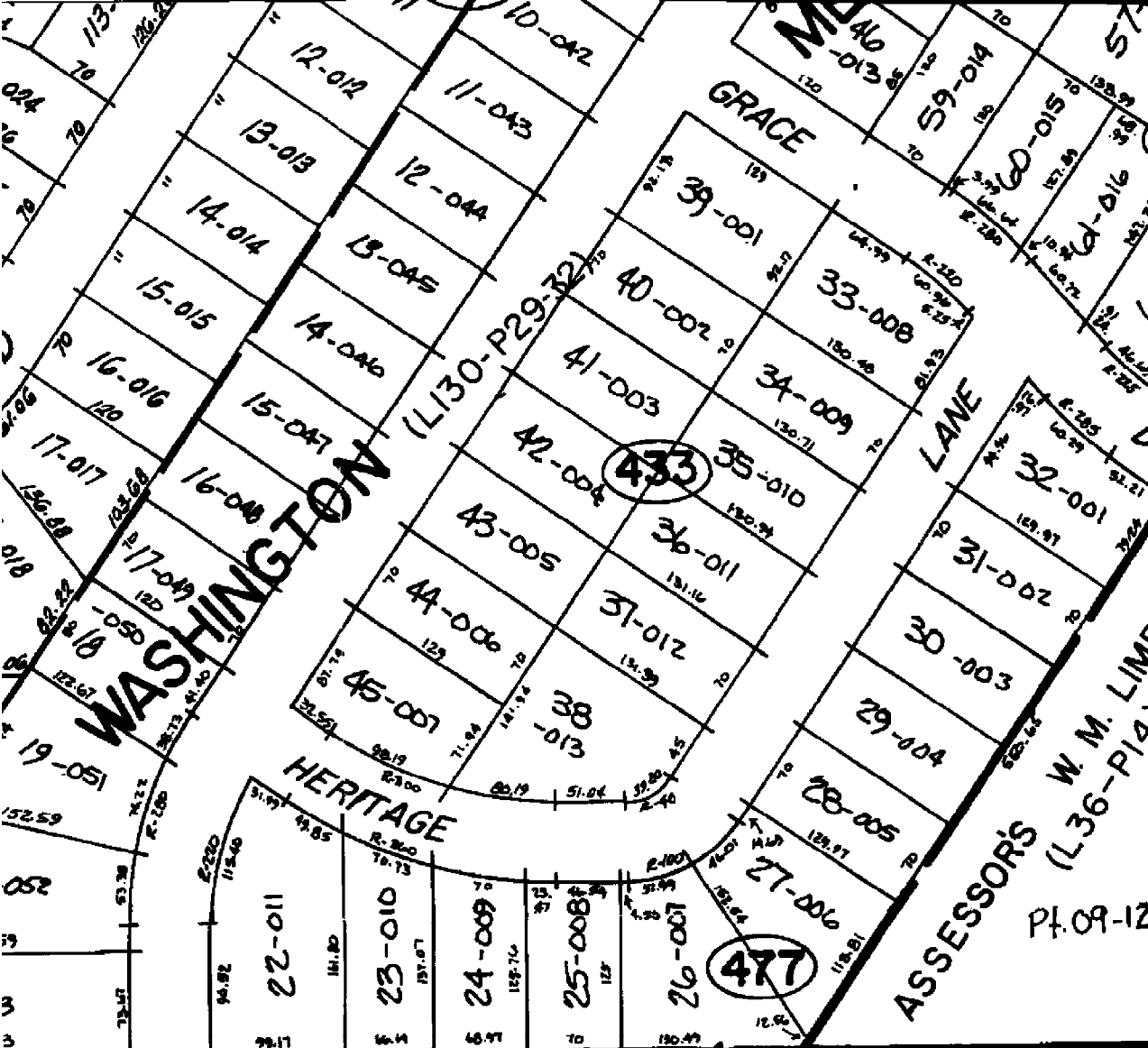
148-045

149-046

150-047

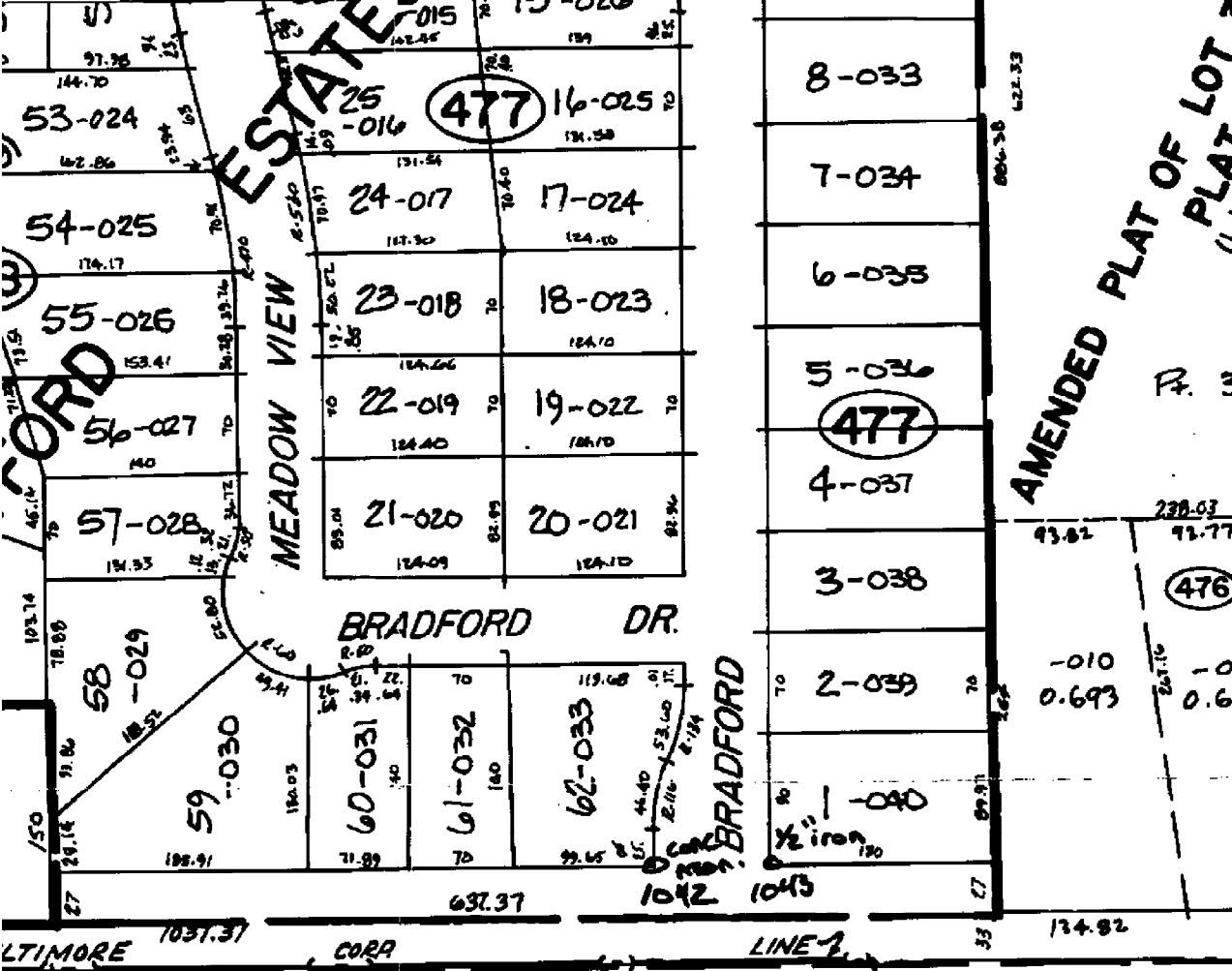
151-048





ORD
SHADOW VIEW
DR.

GRACE
WASHINGTON
HERITAGE
LANE
ASSESSOR'S W. M. LIMB
(L36-P14)
PL. 09-12
SUB
CT.
AMENDED PLAT OF LOT 333
PLAT NO
(L130)
R. 33



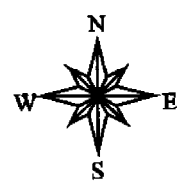
9-L
NEW BALTIMORE
 E. 1/2 S.E. 1/4 SEC. 11 T.3N. R.14E.



DESCRIPTION OF PERMANENT REAL ESTATE INDEX NUMBER

13 - 19 - 302 - 018

- AREA NUMBER (TOWNSHIP LINES OR ENVIRONMENTAL CONVEY)
- SUB AREA NUMBER (ALWAYS CORRELATES WITH SECTION NUMBER)
- BLOCK NUMBER (CITY BLOCK LOCATIVE IN SECTION)
- PARCEL NUMBER (USUALLY A HOUSE LOT OR FARM)

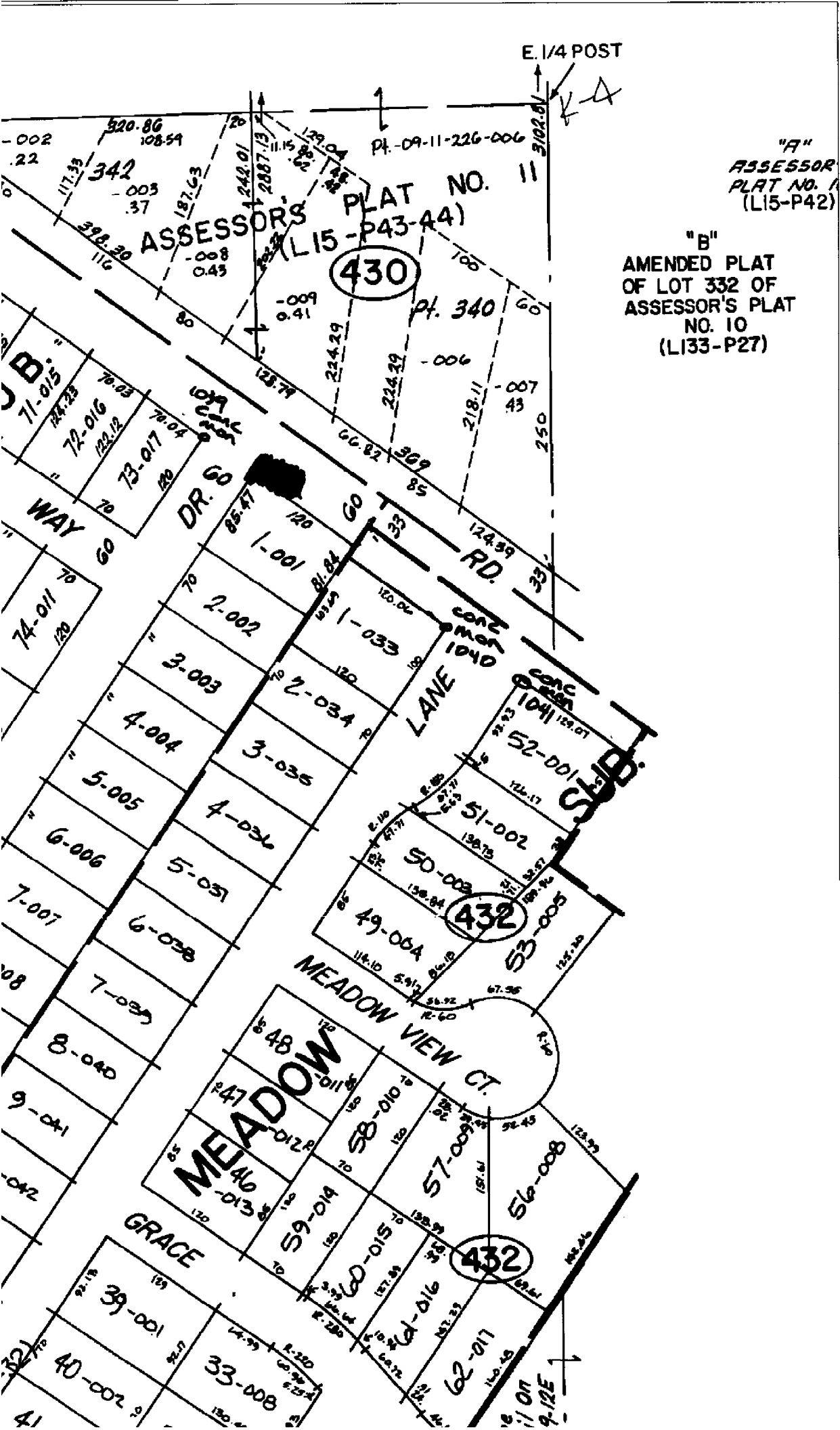


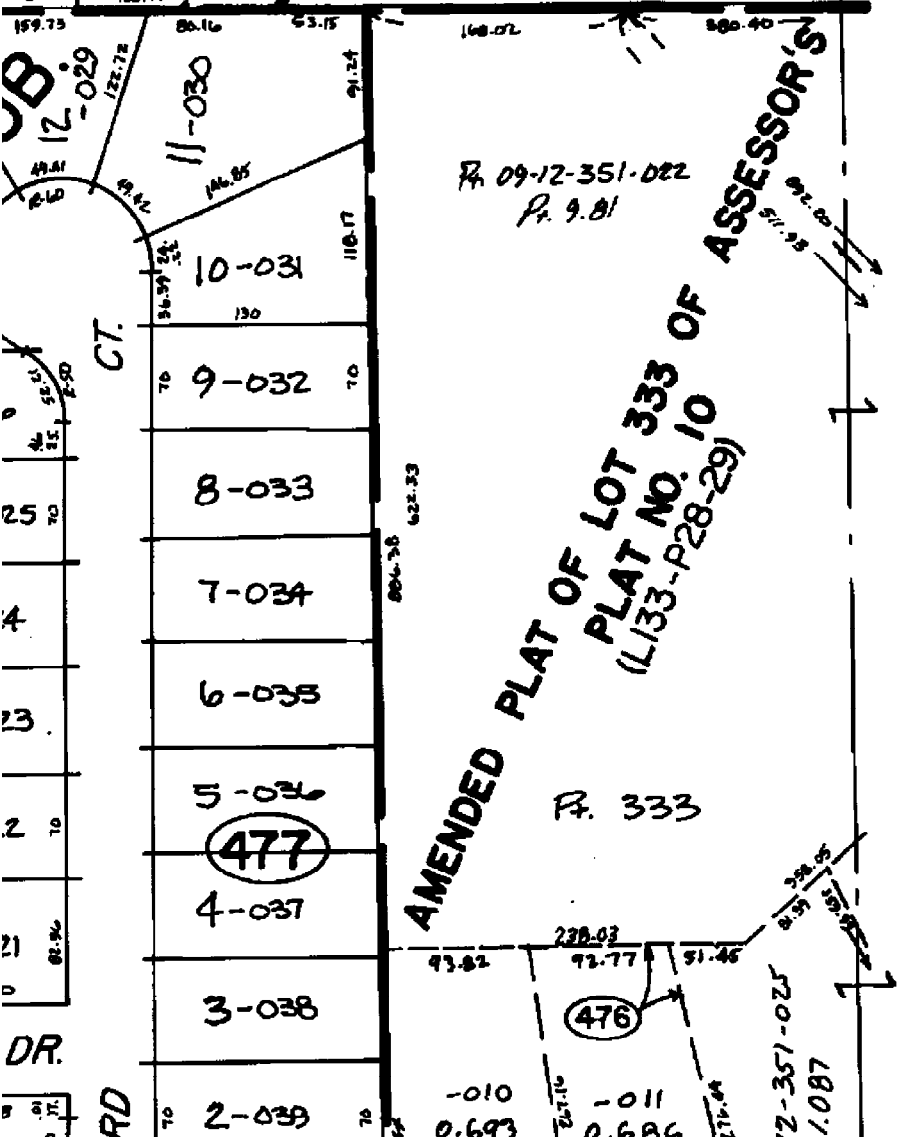
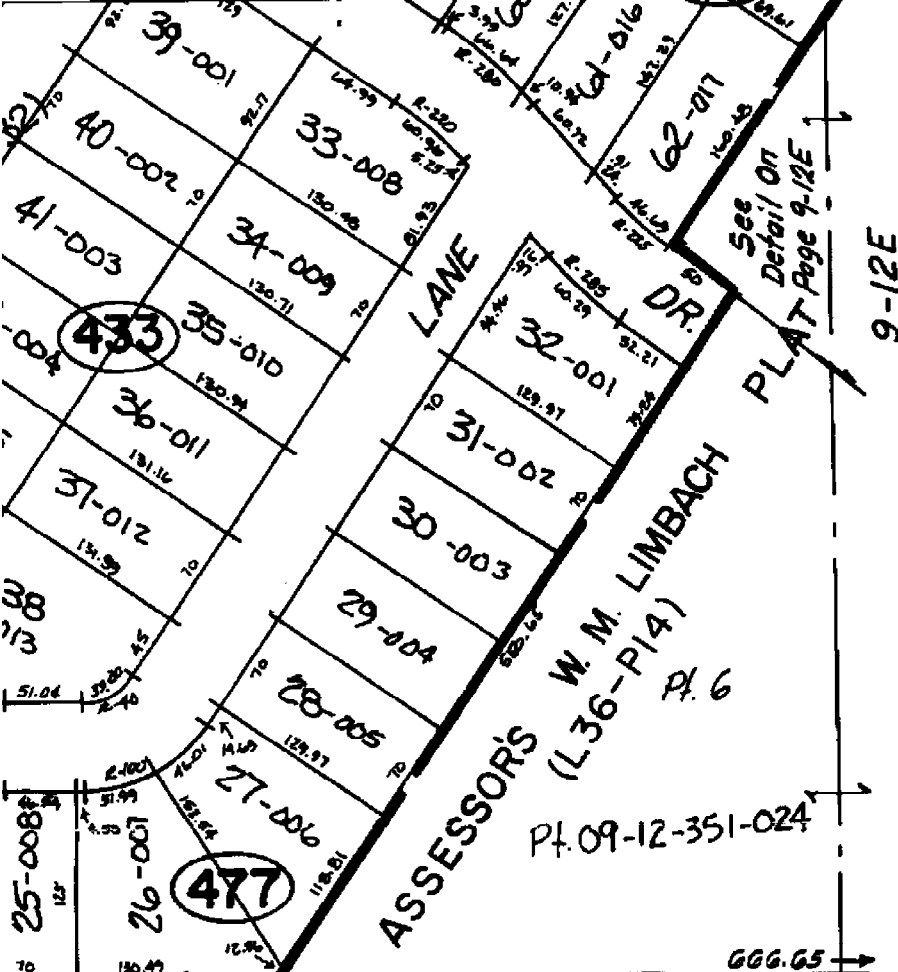
South
 Note:

E. 1/4 POST

"A"
ASSESSOR
PLAT NO. 11
(L15-P42)

"B"
AMENDED PLAT
OF LOT 332 OF
ASSESSOR'S PLAT
NO. 10
(L133-P27)





N.W. COR.

25 MILE (NEW BALTIMORE)

33

481.8

217

788.5

2528 167.80

85

2528 126.43

835

9-11D

14762

14703

100

5905

100

95.25

2638

13305

2661

13305

12635

2528

12645

85

ESSOR'S

ASSESSOR'S

REV. 1-72
 REV. 2-91
 REV. 5-89
 REV. 9-88
 REV. 10-76
 REV. 3-76

100
 590.5
 147.03
 147.02
 2.56
 76

K-4

SCALE: 1" = 100' W. 1/4 POST

COPYRIGHT 1995 MACOMB COUNTY, MI.
 All Rights Reserved.

9-12A

8

NEW

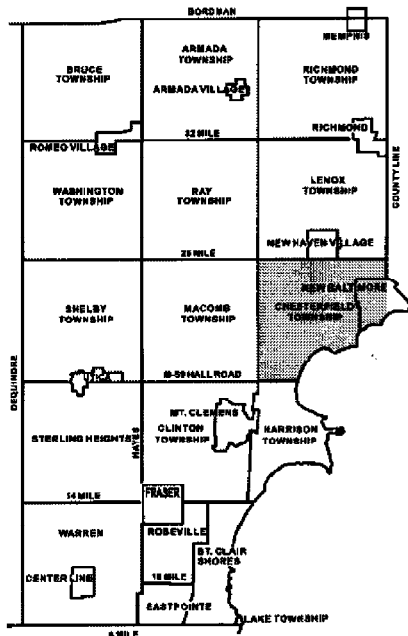
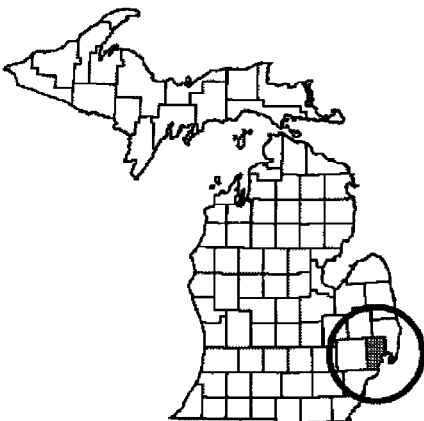
W. 1/2 N.W. 1

Date of Photography: March 2000

100 0 100 200 Feet



1:1200

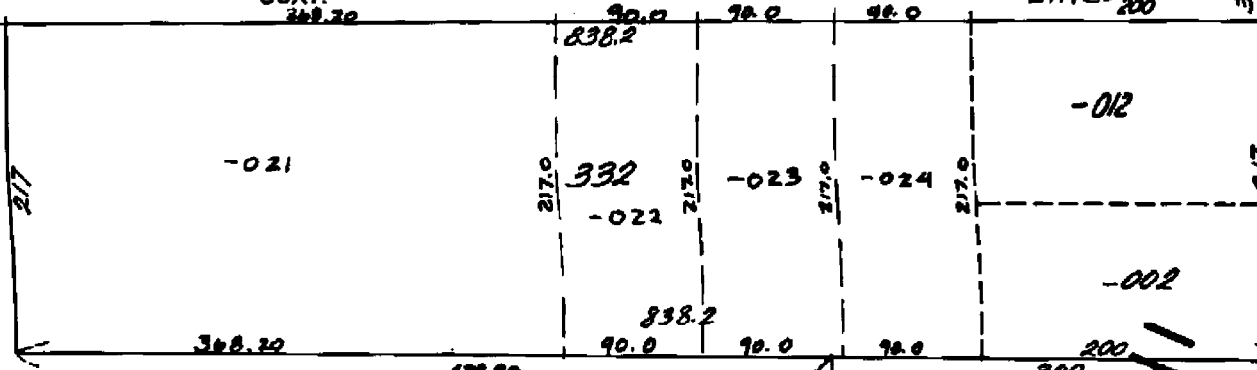


ZIMMERMAN		25 MILE		SCHEUEN		19-50C	
19-50A		19-50B		19-50C		19-50D	
19-50E		19-50F		19-50G		19-50H	
19-50I		19-50J		19-50K		19-50L	
19-50M		19-50N		19-50O		19-50P	
19-50Q		19-50R		19-50S		19-50T	
19-50U		19-50V		19-50W		19-50X	
19-50Y		19-50Z		19-50AA		19-50AB	
19-50AC		19-50AD		19-50AE		19-50AF	
19-50AG		19-50AH		19-50AI		19-50AJ	
19-50AK		19-50AL		19-50AM		19-50AN	
19-50AO		19-50AP		19-50AQ		19-50AR	
19-50AS		19-50AT		19-50AU		19-50AV	
19-50AW		19-50AX		19-50AY		19-50AZ	
19-50BA		19-50BB		19-50BC		19-50BD	
19-50BE		19-50BF		19-50BG		19-50BH	
19-50BI		19-50BJ		19-50BK		19-50BL	
19-50BM		19-50BN		19-50BO		19-50BP	
19-50BQ		19-50BR		19-50BS		19-50BT	
19-50BU		19-50BV		19-50BW		19-50BX	
19-50BY		19-50BZ		19-50CA		19-50CB	
19-50CC		19-50CD		19-50CE		19-50CF	
19-50CG		19-50CH		19-50CI		19-50CJ	
19-50CK		19-50CL		19-50CM		19-50CN	
19-50CO		19-50CP		19-50CQ		19-50CR	
19-50CS		19-50CT		19-50CU		19-50CV	
19-50CW		19-50CX		19-50CY		19-50CZ	
19-50DA		19-50DB		19-50DC		19-50DD	
19-50DE		19-50DF		19-50DG		19-50DH	
19-50DI		19-50DJ		19-50DK		19-50DL	
19-50DM		19-50DN		19-50DO		19-50DP	
19-50DQ		19-50DR		19-50DS		19-50DT	
19-50DU		19-50DV		19-50DW		19-50DX	
19-50DY		19-50DZ		19-50EA		19-50EB	
19-50EC		19-50ED		19-50EE		19-50EF	
19-50EG		19-50EH		19-50EI		19-50EJ	
19-50EK		19-50EL		19-50EM		19-50EN	
19-50EO		19-50EP		19-50EQ		19-50ER	
19-50ES		19-50ET		19-50EU		19-50EV	
19-50EW		19-50EX		19-50EY		19-50EZ	
19-50FA		19-50FB		19-50FC		19-50FD	
19-50FE		19-50FF		19-50FG		19-50FH	
19-50FI		19-50FJ		19-50FK		19-50FL	
19-50FM		19-50FN		19-50FO		19-50FP	
19-50FQ		19-50FR		19-50FS		19-50FT	
19-50FU		19-50FV		19-50FW		19-50FX	
19-50FY		19-50FZ		19-50GA		19-50GB	
19-50GC		19-50GD		19-50GE		19-50GF	
19-50GG		19-50GH		19-50GI		19-50GJ	
19-50GK		19-50GL		19-50GM		19-50GN	
19-50GO		19-50GP		19-50GQ		19-50GR	
19-50GS		19-50GT		19-50GU		19-50GV	
19-50GW		19-50GX		19-50GY		19-50GZ	
19-50HA		19-50HB		19-50HC		19-50HD	
19-50HE		19-50HF		19-50HG		19-50HH	
19-50HI		19-50HJ		19-50HK		19-50HL	
19-50HM		19-50HN		19-50HO		19-50HP	
19-50HQ		19-50HR		19-50HS		19-50HT	
19-50HU		19-50HV		19-50HW		19-50HX	
19-50HY		19-50HZ		19-50IA		19-50IB	
19-50IC		19-50ID		19-50IE		19-50IF	
19-50IG		19-50IH		19-50II		19-50IJ	
19-50IK		19-50IL		19-50IM		19-50IN	
19-50IO		19-50IP		19-50IQ		19-50IR	
19-50IS		19-50IT		19-50IU		19-50IV	
19-50IW		19-50IX		19-50IY		19-50IZ	
19-50JA		19-50JB		19-50JC		19-50JD	
19-50JE		19-50JF		19-50JG		19-50JH	
19-50JI		19-50JJ		19-50JK		19-50JL	
19-50JM		19-50JN		19-50JO		19-50JP	
19-50JQ		19-50JR		19-50JS		19-50JT	
19-50JU		19-50JV		19-50JW		19-50JX	
19-50JY		19-50JZ		19-50KA		19-50KB	
19-50KC		19-50KD		19-50KE		19-50KF	
19-50KG		19-50KH		19-50KI		19-50KJ	
19-50KK		19-50KL		19-50KM		19-50KN	
19-50KO		19-50KP		19-50KQ		19-50KR	
19-50KS		19-50KT		19-50KU		19-50KV	
19-50KW		19-50KX		19-50KY		19-50KZ	
19-50LA		19-50LB		19-50LC		19-50LD	
19-50LE		19-50LF		19-50LG		19-50LH	
19-50LI		19-50LJ		19-50LK		19-50LL	
19-50LM		19-50LN		19-50LO		19-50LP	
19-50LQ		19-50LR		19-50LS		19-50LT	
19-50LU		19-50LV		19-50LW		19-50LX	
19-50LY		19-50LZ		19-50MA		19-50MB	
19-50MC		19-50MD		19-50ME		19-50MF	
19-50MG		19-50MH		19-50MI		19-50MJ	
19-50MK		19-50ML		19-50MM		19-50MN	
19-50MO		19-50MP		19-50MQ		19-50MR	
19-50MS		19-50MT		19-50MU		19-50MV	
19-50MW		19-50MX		19-50MY		19-50MZ	
19-50NA		19-50NB		19-50NC		19-50ND	
19-50NE		19-50NF		19-50NG		19-50NH	
19-50NI		19-50NJ		19-50NK		19-50NL	
19-50NM		19-50NN		19-50NO		19-50NP	
19-50NQ		19-50NR		19-50NS		19-50NT	
19-50NU		19-50NV		19-50NW		19-50NX	
19-50NY		19-50NZ		19-50OA		19-50OB	
19-50OC		19-50OD		19-50OE		19-50OF	
19-50OG		19-50OH		19-50OI		19-50OJ	
19-50OK		19-50OL		19-50OM		19-50ON	
19-50OO		19-50OP		19-50OQ		19-50OR	
19-50OS		19-50OT		19-50OU		19-50OV	
19-50OW		19-50OX		19-50OY		19-50OZ	
19-50PA		19-50PB		19-50PC		19-50PD	
19-50PE		19-50PF		19-50PG		19-50PH	
19-50PI		19-50PJ		19-50PK		19-50PL	
19-50PM		19-50PN		19-50PO		19-50PP	
19-50PQ		19-50PR		19-50PS		19-50PT	
19-50PU		19-50PV		19-50PW		19-50PX	
19-50PY		19-50PZ		19-50QA		19-50QB	
19-50QC		19-50QD		19-50QE		19-50QF	
19-50QG		19-50QH		19-50QI		19-50QJ	
19-50QK		19-50QL		19-50QM		19-50QN	
19-50QO		19-50QP		19-50QQ		19-50QR	
19-50QS		19-50QT		19-50QU		19-50QV	
19-50QW		19-50QX		19-50QY		19-50QZ	
19-50RA		19-50RB		19-50RC		19-50RD	
19-50RE		19-50RF		19-50RG		19-50RH	
19-50RI		19-50RJ		19-50RK		19-50RL	
19-50RM		19-50RN		19-50RO		19-50RP	
19-50RQ		19-50RR		19-50RS		19-50RT	
19-50RU		19-50RV		19-50RW		19-50RX	
19-50RY		19-50RZ		19-50SA		19-50SB	
19-50SC		19-50SD		19-50SE		19-50SF	
19-50SG		19-50SH		19-50SI		19-50SJ	
19-50SK		19-50SL		19-50SM		19-50SN	
19-50SO		19-50SP		19-50SQ		19-50SR	
19-50SS		19-50ST		19-50SU		19-50SV	
19-50SW		19-50SX		19-50SY		19-50SZ	
19-50TA		19-50TB		19-50TC		19-50TD	
19-50TE		19-50TF		19-50TG		19-50TH	
19-50TI		19-50TJ		19-50TK		19-50TL	
19-50TM		19-50TN		19-50TO		19-50TP	
19-50TQ		19-50TR		19-50TS		19-50TT	
19-50TU		19-50TV		19-50TW		19-50TX	
19-50TY		19-50TZ		19-50UA		19-50UB	
19-50UC		19-50UD		19-50UE		19-50UF	
19-50UG		19-50UH		19-50UI		19-50UJ	
19-50UK		19-50UL		19-50UM		19-50UN	
19-50UO		19-50UP		19-50UQ		19-50UR	
19-50US		19-50UT		19-50UU		19-50UV	
19-50UW		19-50UX		19-50UY		19-50UZ	
19-50VA		19-50VB		19-50VC		19-50VD	
19-50VE		19-50VF		19-50VG		19-50VH	
19-50VI		19-50VJ		19-50VK		19-50VL	
19-50VM		19-50VN		19-50VO		19-50VP	
19-50VQ		19-50VR		19-50VS		19-50VT	
19-50VU		19-50VV		19-50VW		19-50VX	
19-50VY		19-50VZ		19-50WA		19-50WB	
19-50WC		19-50WD		19-50WE		19-50WF	
19-50WG		19-50WH		19-50WI		19-50WJ	
19-50WK		19-50WL		19-50WM		19-50WN	
19-50WO		19-50WP		19-50WQ		19-50WR	
19-50WS		19-50WT		19-50WU		19-50WV	
19-50WW		19-50WX		19-50WY		19-50WZ	
19-50XA		19-50XB		19-50XC		19-50XD	
19-50XE		19-50XF		19-50XG		19-50XH	
19-50XI		19-50XJ		19-50XK		19-50XL	
19-50XM		19-50XN		19-50XO		19-50XP	
19-50XQ		19-50XR		19-50XS		19-50XT	
19-50XU		19-50XV		19-50XW		19-50XZ	
19-50YA		19-50YB		19-50YC		19-50YD	
19-50YE		19-50YF		19-50YG		19-50YH	
19-50YI		19-50YJ		19-50YK		19-50YL	
19-50YM		19-50YN		19-50YO		19-50YP	
19-50YQ		19-50YR		19-50YS		19-50YT	
19-50YU		19-50YV		19-50YW		19-50YX	
19-50YY		19-50YZ		19-50ZA		19-50ZB	
19-50ZC							

9-FW

CORP
248.20

RD.
LINE 200



333-017
15.7923

101

N.O.

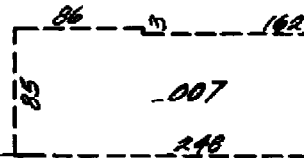
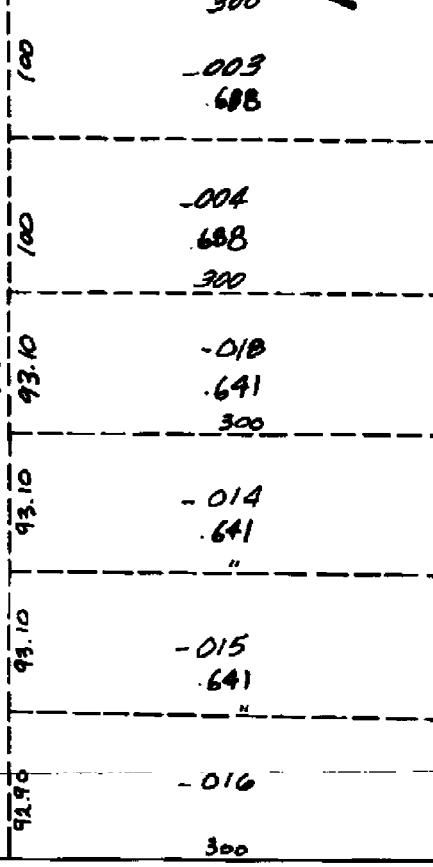
1020.31
1320.31

334-019
4.601
1072.37
1320.37

-020
2.576

1320.4

-009
3.80 PI.
335
7311.55



N/O

1072.37 7.601
1320.37

248

-020
2.576

1320.4

-009
3.80 Pl.

335

1311.55

-010
3.80 Pl.

1311

(101)

1320.49

-001
4.02 Pl.

336

(L15-P43-44)

PLA
-002
4.02 Pl.
1320.59

-003
5.02 Pl.

337

-004
3.03 Pl.

1320.69
1320.75

-010

1320.72

-011
(151)
1320.76

-012

338
1320.80

-006
4.36 Pl.

1320.82

-012

338 1320.80

-006
4.36 PI.

1320.82

-007
4.36 PI.

1320.9

-008
5.04

339

1317.8

-009
2.96

1317.39
1324

9-12E

NEW BALTIMORE

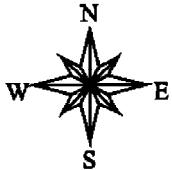
N.W. 1/4 SEC. 12 T.3N. R.14E.



DESCRIPTION OF PERMANENT REAL ESTATE INDEX NUMBER

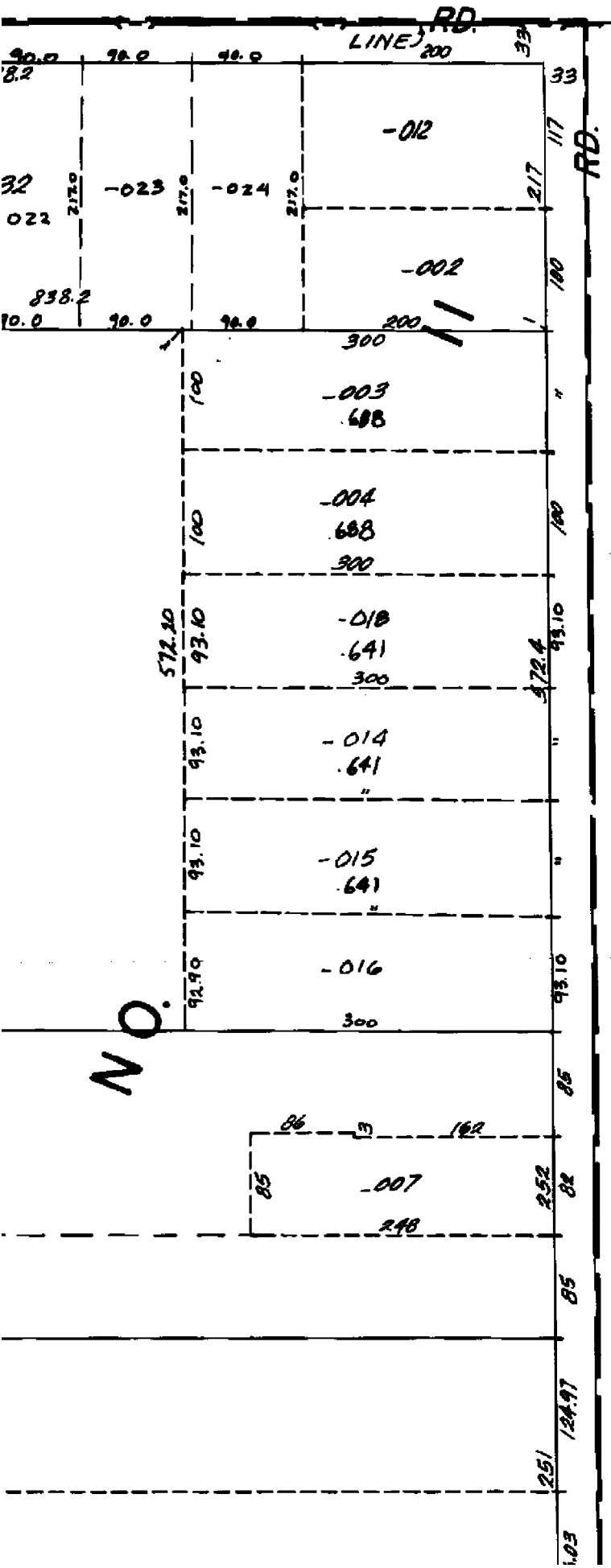
13 - 19 - 302 - 018

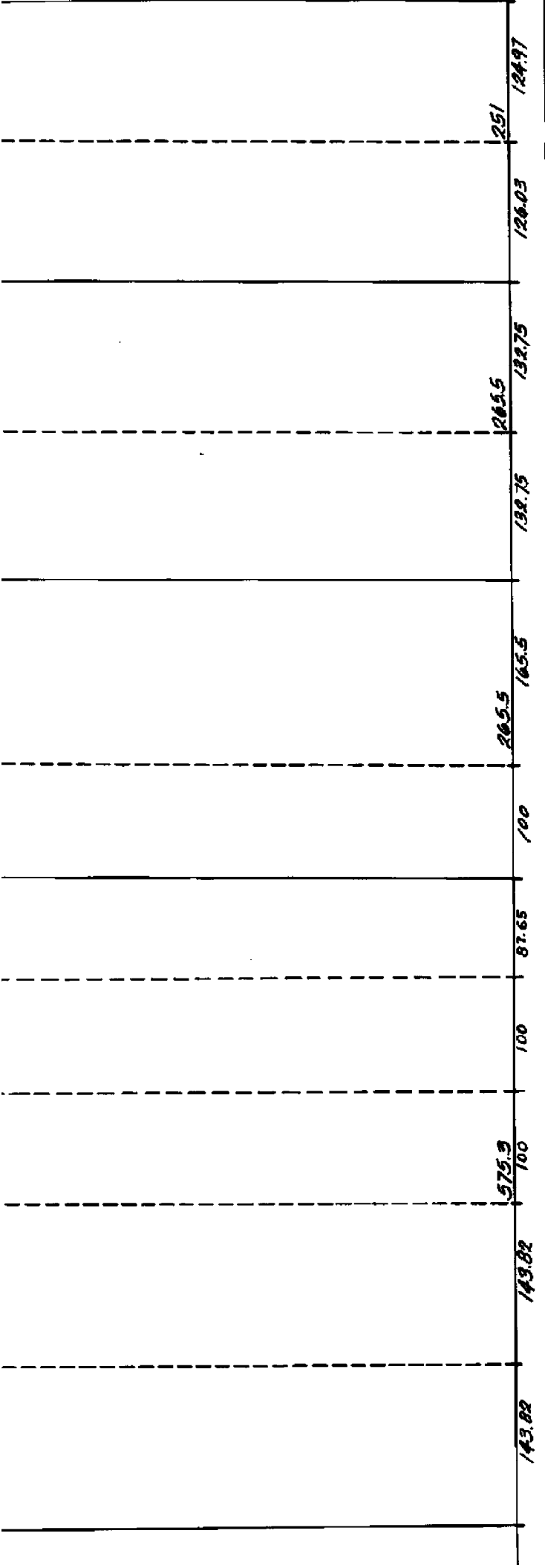
- 13** AREA NUMBER (TOWNSHIP NUMBER IN GOVERNMENTAL SURVEY)
- 19** SUB AREA NUMBER (ALWAYS CORRELATES WITH SECTION NUMBER)
- 302** BLOCK NUMBER (CITY BLOCK LOCATION IN SECTION)
- 018** PARCEL NUMBER (USUALLY A HOUSE, LOT OR FARM)



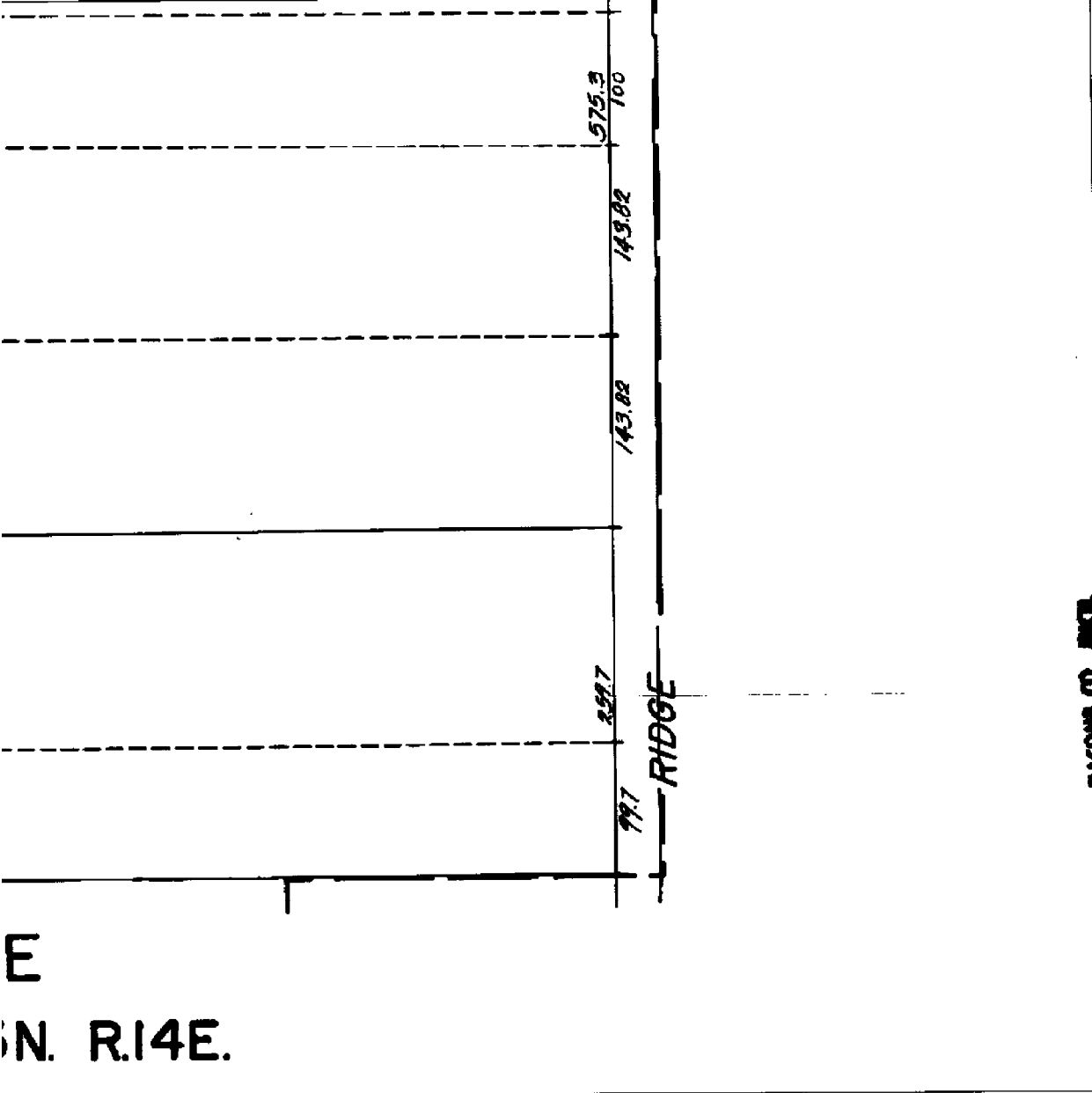
Source:

Note: Digit
Part
and
hor
This
pho
con
to t





9-12B



E
N. R.14E.



DESCRIPTION OF PERMANENT REAL ESTATE INDEX NUMBER

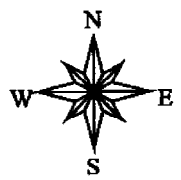
13 - 19 - 302 - 018

AREA NUMBER (TOWNSHIP NUMBER COMBINED WITH SURVEY)
SUB AREA NUMBER (ALWAYS COMBINED WITH SECTION NUMBER)
BLOCK NUMBER (CITY BLOCK LOCATION IN SECTION)
PARCEL NUMBER (USUALLY A HOUSE LIST OR FARM)

09-12A

W.1/2 N.W.1/4 SEC.12 T.3N. R.14E.

NEW BALTIMORE



Source: Macomb County Planning and Economic Development Department (PEDD)
- 2000 Digital Orthophotography Project
- Parcel Conversion Project

Note: Digital Orthophotography horizontal positioning accuracy is 3 feet.
Parcel boundary lines should be considered a graphical representation and not in any way a legal survey or engineering document. In general, the horizontal positioning and length accuracy is 15 feet.
This map is intended for general planning purposes. Site specific evaluation should be verified by field inspection. This is a work in progress and may contain errors and omissions. Please report any potential revisions to the PEDD at (810)468-5285.

GIS **MACOMB COUNTY**
Planning and Economic
Development Department

9-11H

556.65

228.14
339.14

123.91

172.11
677.3

5-018

681.79

4-019

352.12
W. M.
(L36-PI4)

LIMBACH

ASSESSORS

Pt. 6
Pt. -024

536.24

347

666.65

553.41
380.40

511.95
892.20

C

Pt. 391

Pt. 09-12-351-022
Pt. 9.81

606.80
624.10
639.80

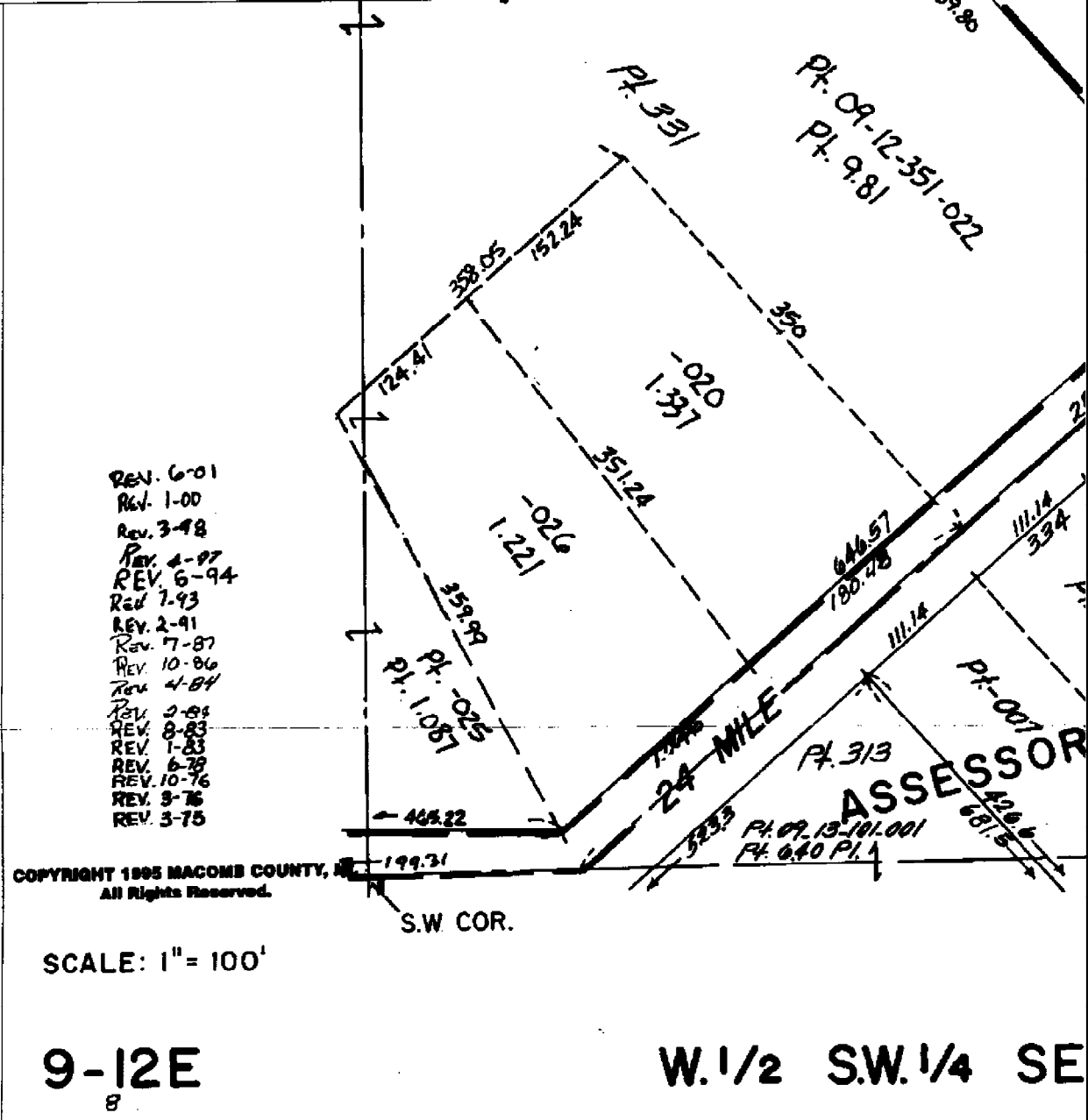
388.05
152.24

124.41

-02C
1.21

350

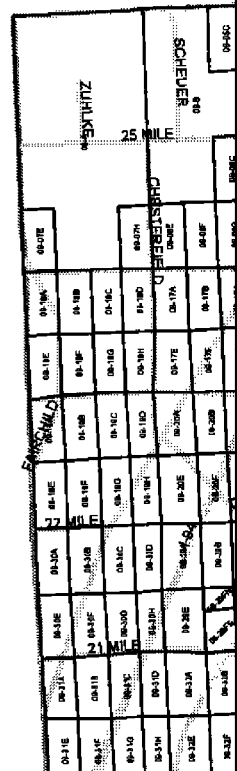
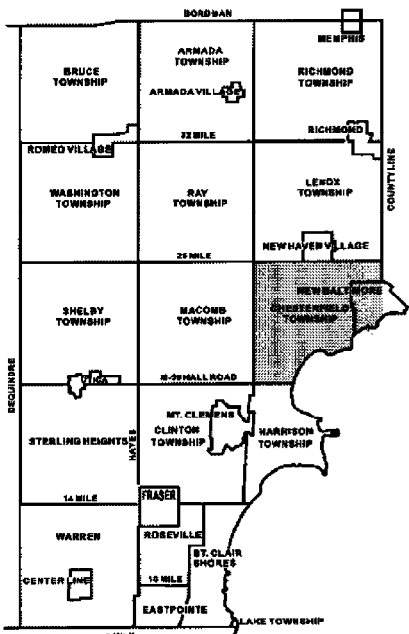
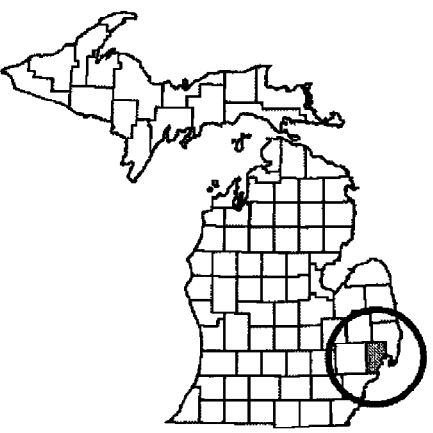
350
590.00
590.00



Date of Photography: March 2000



1:1200

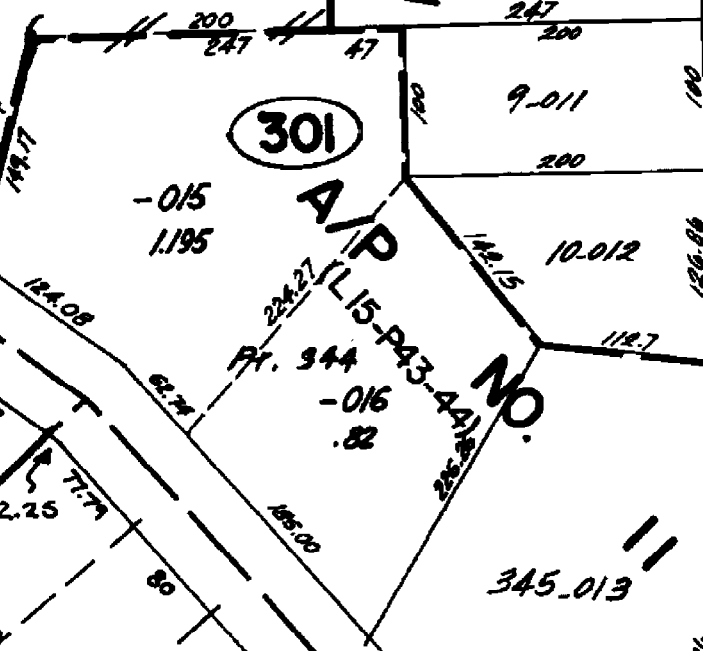
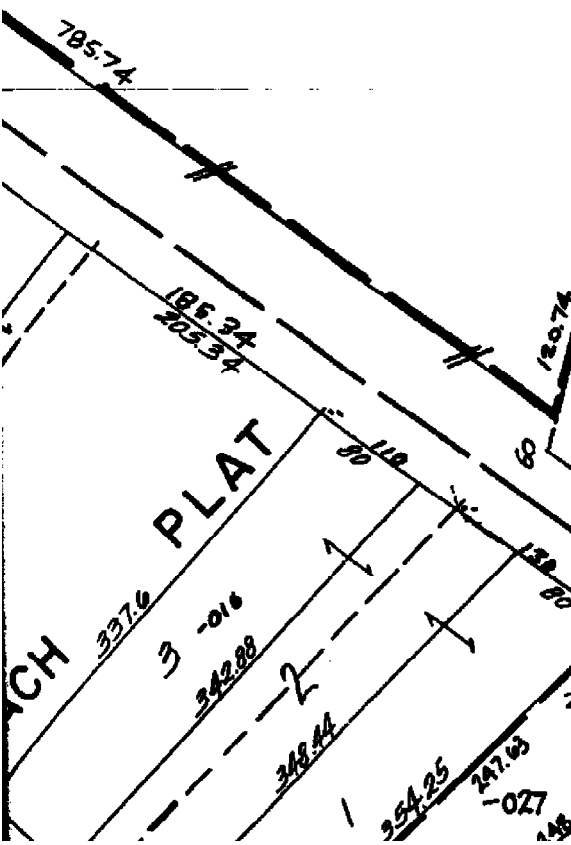
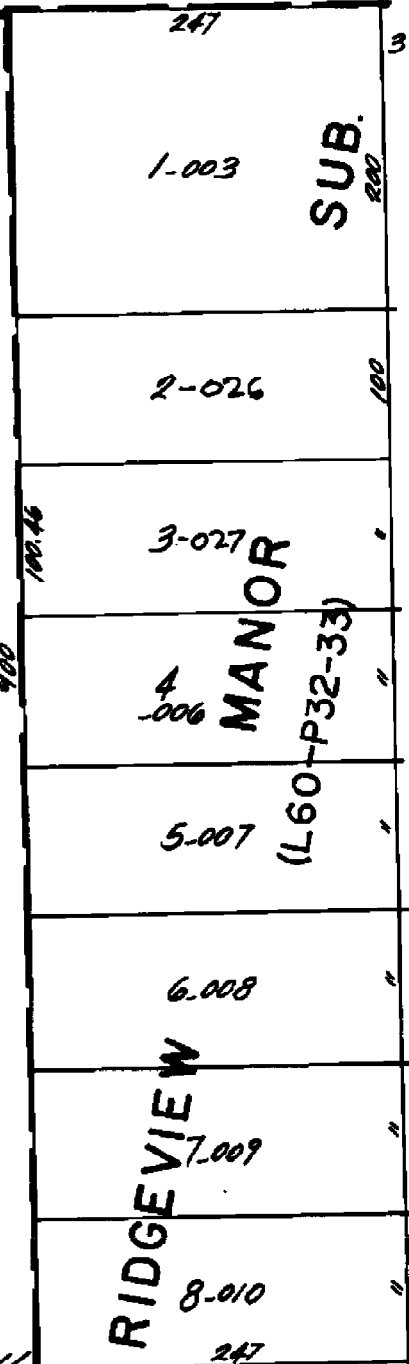


9-12A

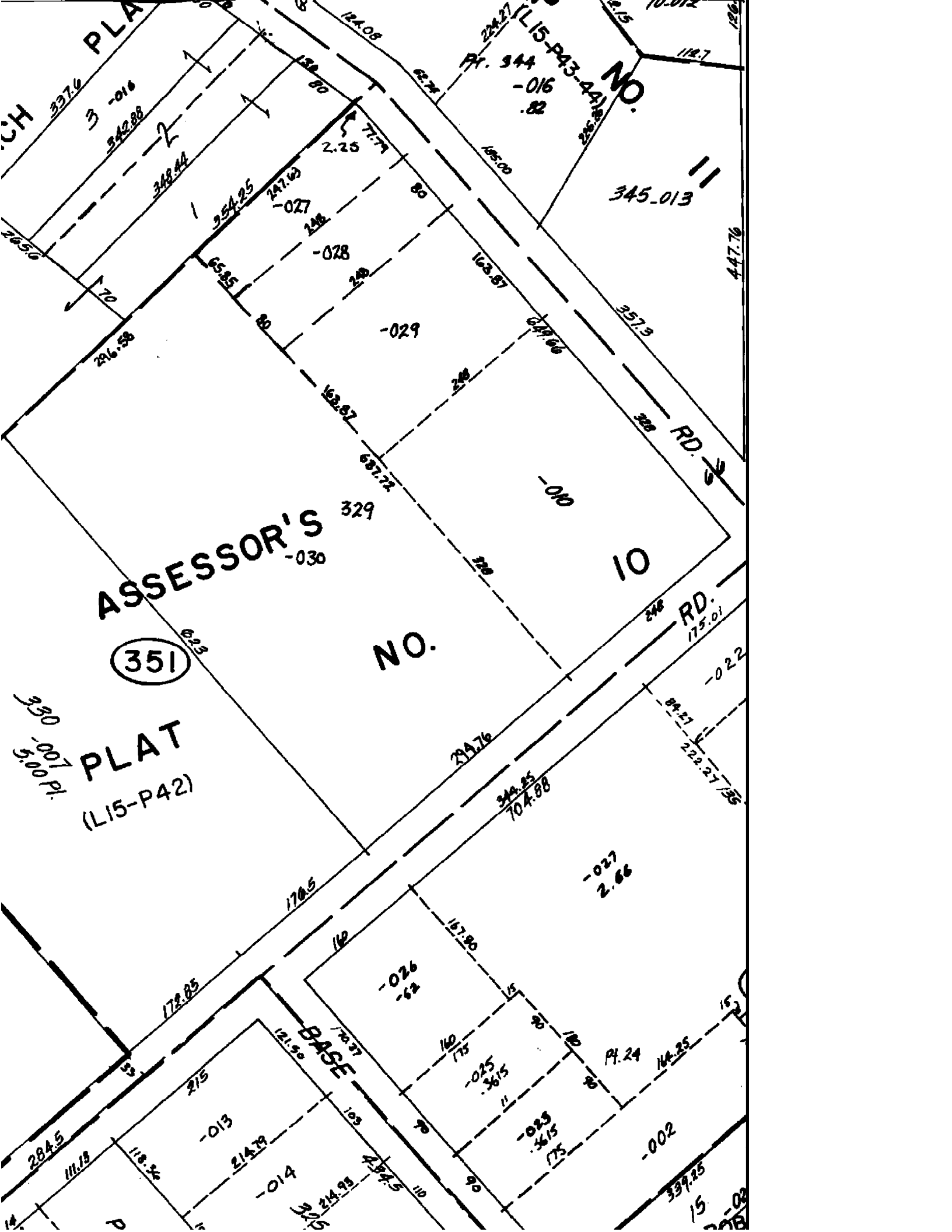
714.34

EDGE
L347
-045

302



345.013



CH PLAT

22.15
10.012
118.7
22.27
L15-P43-44
Pt. 944
-016
.82

NO.

345.013

ASSESSOR'S
-030

NO.

10

(351)

RD.
175.01

330
-007
5.00 Pl.
PLAT
(L15-P42)

-022

293.76
344.25
704.88

-027
2.66

-026
-62

BASE

-025
.3615

-025
.3615

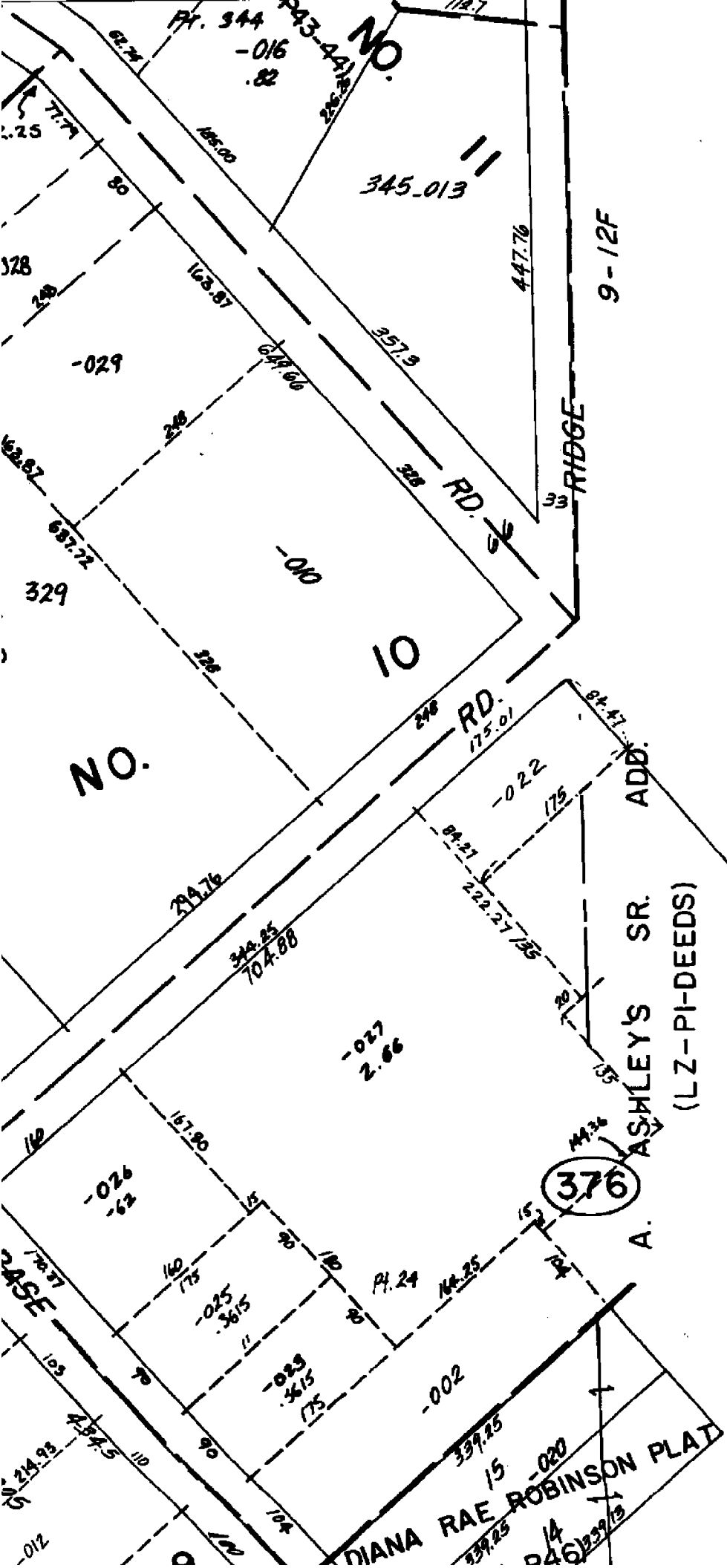
-002

-013

-014

339.25

15
22.02



PT. 344
-016
.82

343-441-2-2

345.013

9-12F

RIDGE

RD. 33

NO.

10

RD. 246

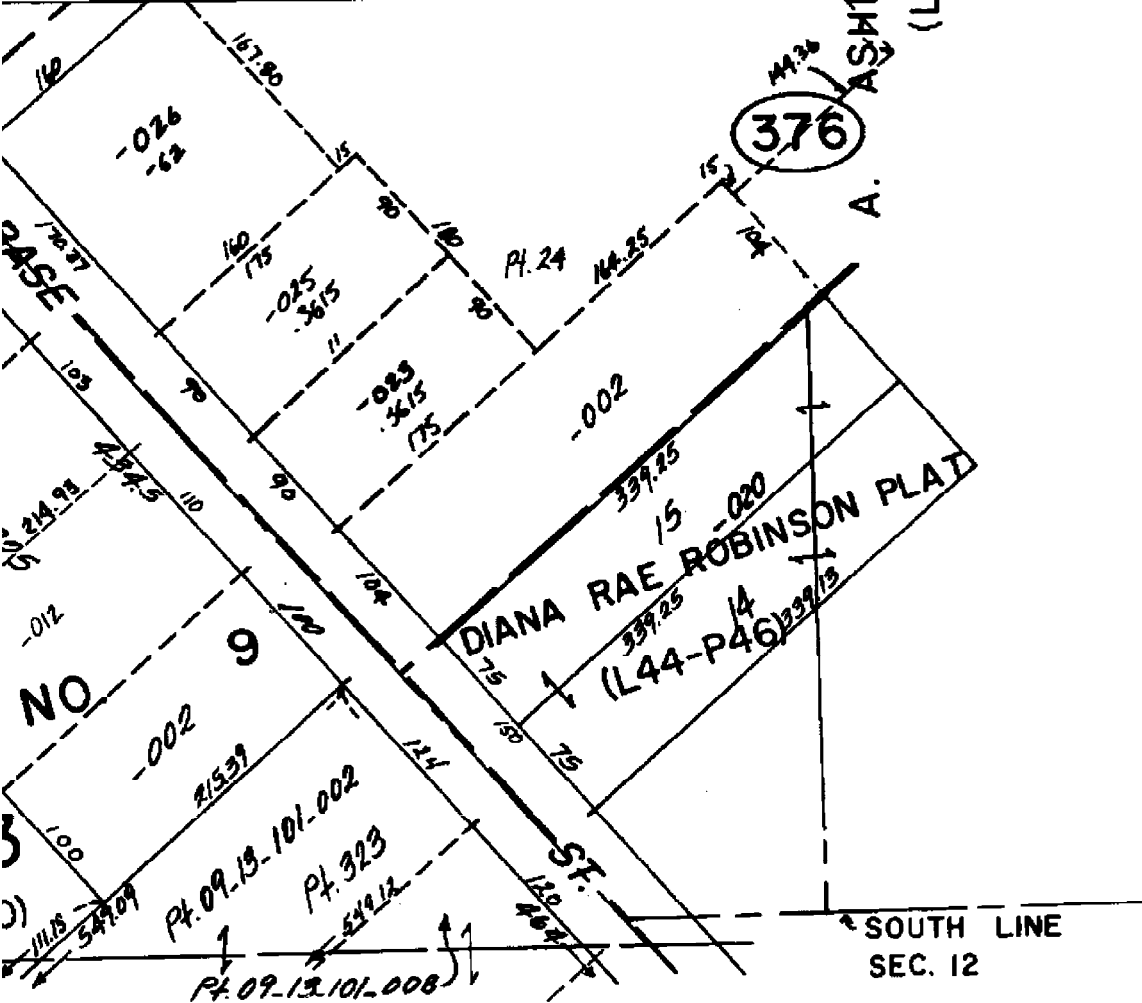
ADD.

ASHLEY'S SR.
(LZ-PI-DEEDS)

376

A.

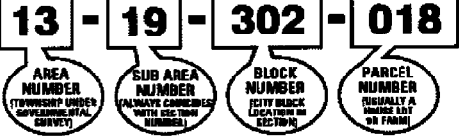
DIANA RAE ROBINSON PLAT



MORE
C. 343 T.3N R.14E.

AREA NUMBER	SUB AREA NUMBER	BLOCK NUMBER	PARCEL NUMBER
13	19	302	018

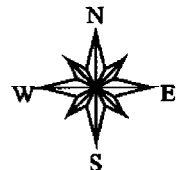
DESCRIPTION OF PERMANENT REAL ESTATE INDEX NUMBER



09-12E

W.1/2 S.W.1/4 SEC.12 T.3N. R.14E.

NEW BALTIMORE



Source: Macomb County Planning and Economic Development Department (PEDD)
 - 2000 Digital Orthophotography Project
 - Parcel Conversion Project

Note: Digital Orthophotography horizontal positioning accuracy is 3 feet.
 Parcel boundary lines should be considered a graphical representation and not in any way a legal survey or engineering document. In general, the horizontal positioning and length accuracy is 15 feet.
 This map is intended for general planning purposes. Site specific evaluation should be verified by field inspection. This is a work in progress and may contain errors and omissions. Please report any potential revisions to the PEDD at (810)469-5285.

GIS **MACOMB COUNTY**
 Planning and Economic
 Development Department