

LAND CORNER RECORDATION CERTIFICATE

Filing Requirement of Act 74, Mich. P.A. 1970

RECORDED IN THE PUBLICITY RECORDS AT 8:30 A.M.

For corners in

Macomb County

Located In: Chesterfield

Corner Code #

DEC 28 1993

Register of Deeds Stamp & File Number

- 1. Public Land Survey T 3 N R 14 E K-1
2. Property Controlling in Section S T R
3. Miscellaneous Property in Sec. S T R

- 4. Lot No. Recorded Plat
5. Private Claims

Grid table with columns A-M and rows 2-13. A dot is marked in the cell for column K, row 2.

I, Steven E. Dunn, in a field survey on December 8, 1993, do hereby certify that under requirements of P.A. 74, Michigan P.A. of 1970, the corner points mentioned in lines 1 and 2 above were in conformance with regulations and rules therefore as required in the current manual of survey instructions of the United States Department of the Interior, Bureau of Land Management or by a decree of a Court of Law and/or that the corner points mentioned in lines 3, 4 and 5 above were in conformance with the rules of the Michigan Board of Land Surveyors or by a Decree of a Court of Law; established, re-established, monumented, re-monumented, recovered, found as expressed below:

NOTE: Not more than 4 corners, all in the same town and range, may be recorded on this certificate.

A. Description of original monument and accessories and/or subsequent restoration:

GLO Post - No. Evidence of Original Corner. GLO Original survey performed by Preston 2-18-1818.

L.C.R.C.: L.2380, P.496 Robert J. Patterson #17631 March 27, 1973 K-1 - 1/2" Rod in Hand Hole. - Witness - P.K. Nail in 18" Tree, NW'ly - 75.05' P.K. Nail in Utility Pole N.E.'ly - 97.44 (Found) P.K. Nail in Utility Pole S.E.'ly - 74.71'

Note: Monument Box for South 1/4 Cor. Sec. 35, T.4.N.,R.14E., is 418.73' West of K-1

B. Description of corner evidence found and/or method applied in restoring or reestablishing corner:

K-1 Found 1/2" Iron Rod in Monument Box under 4" Asphalt. Corner matches that one described above and agreed with found Witness. This corner is 0.97' South of line between South 1/4 corner and SE corner of Section 35, Town 4 North, Range 14 East (Lenox Township). Lenox Township was subdivided first so corner should fall on above line.

ACCEPTED BY THE MACOMB COUNTY SURVEY PEER GROUP AS THE OFFICIAL CORNER UNDER MICHIGAN PUBLIC ACT 345 OF 1990 AT A MEETING HELD ON 12-22-93. Includes signature of Frank J. Dedecker, P.S., P.E., Chairman and a circular seal of the State of Michigan Surveyor No. 28408.

C. Description of monument for reestablishing the position of the corner:

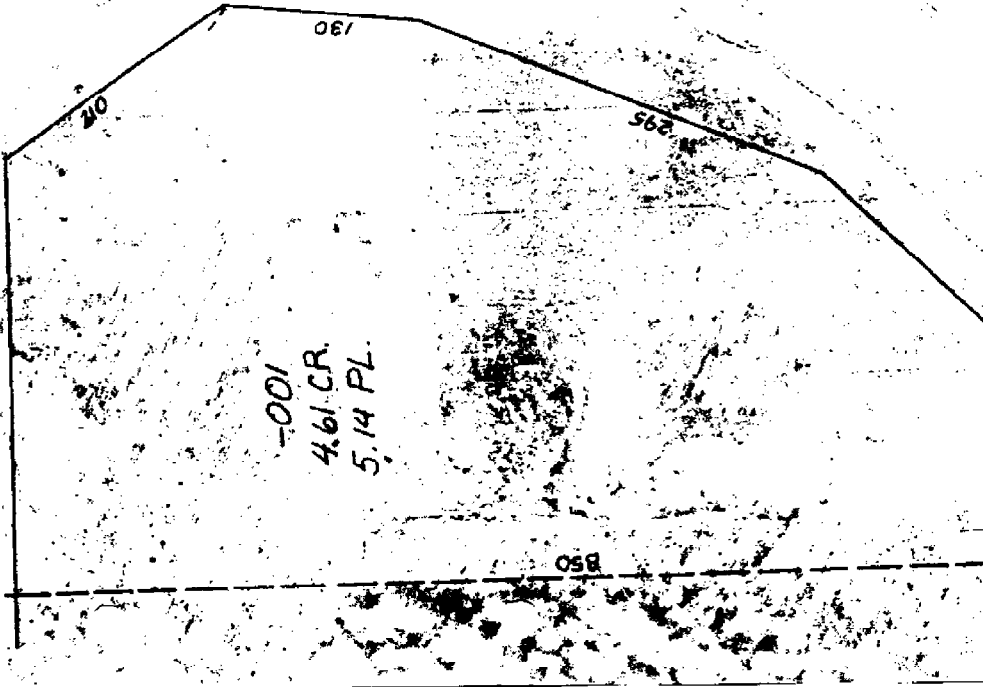
K-1 T.3N.,R.14E. Macomb County Monument Marker #28408 on 3/4" x 24" Iron Rod in Monument Box. Witnesses: N.75°E. - 97.19' Set P.K. and Macomb County Witness tag @ NW face U.P. N.07°W. - 65.69' Set P.K. and Macomb County Witness tag @ West face 29" Hickory S.52°E. - 52.14' Set P.K. and Macomb County Witness tag @ NE face 12" Elm N.64°E. - 50.08' Set P.K. and Macomb County Witness tag in centerline of Asphalt drive and centerline of CMP Culvert. South - 0.97' Found 1/2" Iron Rod in Monument Box under 4" Asphalt. The selected location is a careful and faithful perpetuation of the position of the original corner.

Signed by Steven E. Dunn Date 12-22-1993

Surveyor's Michigan License No. 28408

6-36E

26 MILE 203



-002
11.99

U.S. 25

1-94

380

130

20

295

350

20



15

P: 09-01-100-017
P: 31.07

POWER

CONSUMERS

100

R-23028.32
354
25

RD

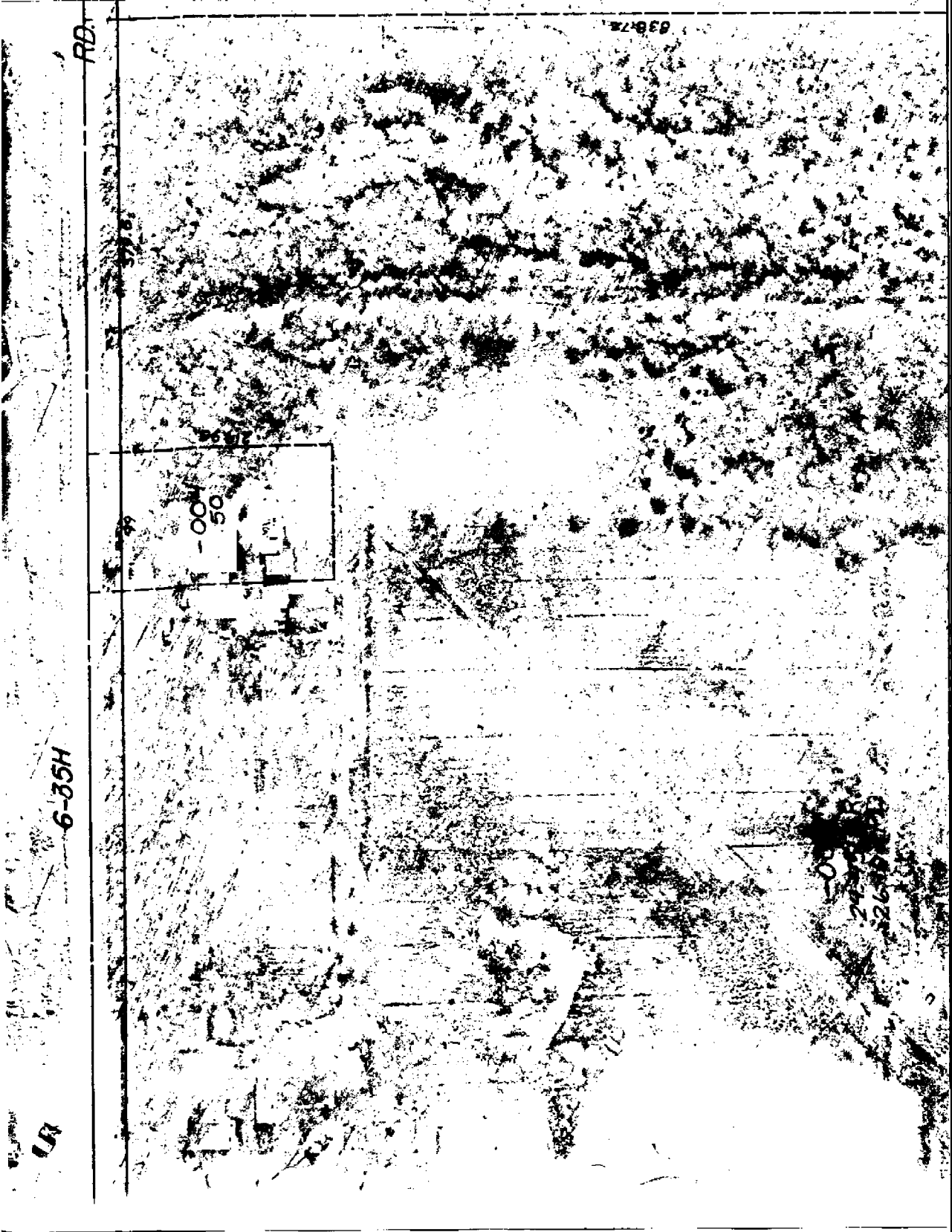
03072

00
50

6-35H

00
24
26

UR



504 86

-008
3 429

611.56
461.414

R-23068.32
5-258.35

-014
8.64

05

COMPANY

200

LAND CORNER RECORDATION CERTIFICATE

FILING REQUIREMENT OF ACT 74, MICH. P.A. 1970

Chesterfield Township

LIBER **2380** PAGE **496**

A176340

| FOR CORNERS OF-- | LOCATED IN-- | CORNER CODE NUMBER |
|--|---|-----------------------|
| 1. PUBLIC LAND SURVEY _____ | T. <u>3</u> N. <u>X</u> R. <u>14</u> E. <u>X</u> | <u>K1, L1, K2, L2</u> |
| 2. PROPERTY CONTROLLING IN SECTION _____ | T. _____ N. _____ S. _____ R. _____ E. _____ W. _____ | _____ |
| 3. MISCELLANEOUS PROPERTY IN SECTION _____ | T. _____ N. _____ S. _____ R. _____ E. _____ W. _____ | _____ |
| 4. LOT NO. _____, RECORDED PLAT _____ | | |
| 5. PRIVATE CLAIMS _____ | | |

RECORDED IN MACOMB CO.
RECORDS AT: 10:30a

MAR 27 1973

CLERK OF THE REGISTER OF DEEDS
REGISTER OF DEEDS STAMP AND FILING NUMBER

I, Robert J. Patterson do hereby certify that under requirements of P.A. 74, Michigan P.A. of 1970 the corner points mentioned in lines 1 and 2 above (identified with circles on index code diagram - over) were, in field survey on February 5 1973, established, re-established, monumented, re-monumented, recovered restored as expressed below and in conformance with regulations and rules therefore as required in the current manual of survey instructions of the United States Department of the Interior, Bureau of Land Management or by a decree of court of law. Furthermore, that the corner points mentioned in lines 3, 4 and 5 above were, in a field survey _____ 19____, found, recovered, restored, established or re-established as expressed below and in conformance with the rules of the Michigan State Board of Registration for Land Surveyors or, by a Decree of a Court of law:

A. Description of original monument and accessories and/or subsequent restoration:

B. Description of corner evidence found and/or method applied in restoring or re-establishing corner:

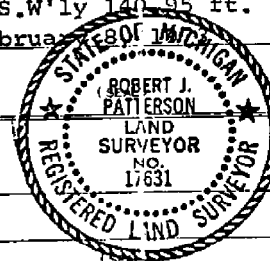
- C. Description of monument for corner and accessories established to perpetuate locating the position of the corner
- K1 - 1/2" Rod in Hand Hole - Witness - P.K. nail in 18" Tree, N.W'ly - 75.05 ft. P.K. nail in Utility Pole N.E'ly - 97.44 ft. P.K. nail in Utility Pole S.E'ly - 74.71 ft.
 - L1 - P.K. nail - Witness - P.K. nail in Utility Pole N.W'ly - 53.81 ft. P.K. nail in Utility Pole N.E'ly - 78.80 ft. P.K. nail in 27" Tree, S.E'ly - 93.89 ft.
 - K2 - Iron - Witness - P.K. nail in 12" Tree, N.E'ly 23.72 ft. P.K. nail in 12" Tree, S.E'ly - 21.22 ft. P.K. nail in 12" Tree, S.W'ly - 28.41 ft.
 - L2 - Iron - Witness - P.K. nail in 12" Tree, N.W'ly 34.23 ft. P.K. nail in Utility Pole N.E'ly 34.34 ft. P.K. nail in Utility Pole S.W'ly 140.95 ft.

SIGNED BY Robert J. Patterson DATE February 5, 1973
SURVEYOR'S MICHIGAN REGISTRATION NO. 17631

FOR STATE AND UNITED STATES AGENCIES:

SIGNED BY _____ CHIEF OF SURVEY PARTY DATE _____

APPROVED AND SIGNED BY _____ MICHIGAN REGISTERED LAND SURVEYOR DATE _____



00288

SURVEYOR'S MICHIGAN REGISTRATION NO. _____

Run 3 North Range 14 East -

70.16 a run 3 links mile C. S. E.
 (A) 10.00 Set temp 4 mile post
 Good post set 2nd rate
 Timb 11 Oak Beech B. Ash Sugar Elm etc

111.00 Set temp 1/2 mile post
 (E) 10.50 Set temp 5 mile post
 Good level & dry good 2nd rate
 Timb White Oak Beech Sugar Elm etc

(6) 40.00 Set temp 1/2 mile post
 45.20 Creek 20 links mile course S.E.
 111.50 Intersected Town boundary 1.84 South
 of cor. April 20th 1817
 Good level very good 2nd rate
 Timb 11 Oak Elm B. Oak B. Hickory
 Sugar Beech etc

| | | |
|-------|------|------|
| Lenox | 21 | 32.1 |
| 71.50 | 31.2 | |
| | 40 | |

Corrected between 3034 N. 14. R
 Set 1/2 Post from which an Ironwood
 6 in diameter bears S 81 E 7 links also
 an Ironwood 5 in diam bears S 18 W 13 links
 distant

(7) 111.50 Set 5 mile post for Cor of sections
 31432 from which an Ironwood 7
 in diam bears N 12 W 6 1/2 links also a
 White Oak 2.2 in diameter bears N 52
 11.13 links distant

110.00 Set 1/4 m. post from which a White Oak
 2.2 in diam bears S 12 W 37 links also a Beech 1 1/2 in diam
 bears S 17 W E 23 links

(A) 800.00 Set 1/4 mile post for cor of section 32123

from which a B Oak 30 inches diam.
bears S 17 & 21 1/2 links also an Elm 14
N 35 1/2 W 5 links distant

East Corner betw. T. 34 N. R. 14 E.
110.00 Made 1/4 S Cor. on a B Oak 8 inch.
80.00 Set 3 mile post for Cor. of section
from which a White Oak 30 inches
bears S 11 & 12 links also a Beech
inches diameter bears N 68 W 2
distance

110.00 Set 1/4 S post from which a Beech
12 in diam bears N 11 & 10 links
also a Beech 13 inches diam at
S. 81 & 20 links distant

90.00 Set 2 mile post for Cor. of section
from which a Beech 6 in diam b
S 63 & 16 - links also a Beech 5 in
bears N 110 & 12 links distant

110.00 Set 1/4 S post from which a Beech 16
diameter bears N 47 & 11 links a
Beech 14 inches diam bears N 1
links distant

10.00 Made mile tree of a Beech 5 in
diameter for Cor. of sections 35 + 36

110.00 Set 1/4 S post from which a W Oak
12 in diam bears S 77 W 12 links
a Sugar 8 in diam bears S 48 W
links dist -

10.00 To Town Cor. April 21st

Surveyed 1834 by J. C. Parker Jr.

Mich.

T. 3 N, R. 14 E, Mer.

5.

From 3 North Range 11 East

- 36.26 Saline River 100 links corner S.W.
 110.00 Made half mile corner on a Sycamore
 6 ins diam
 50.50 a W Oak 24 ins diam
 50.70 Intersect Private Claims No 342
 16.72 claims East of North corner being
 1st half mile land rolling and dry
 good 2nd rate Balance same
 Timber Poplar W. Cove 13 each Sycamore
 W. side on the spine set post for
 fractional sections 22 & 23 from which
 a W Oak 24 diam bears North 19 links
 dist also a W Oak 11 in diam bears N
 74 & 10 links dist

East Between sections 14 & 23

- 23.74 Saline River 80 links
 110.00 Set half mile post from which a
 Beech 12 ins diam bears S 40 & 35 links
 also a Beech 14 ins diam bears N 50 &
 16 links dist
 67.16 Intersect Private Claims 38.18
 S.W. 1/4 corner of Indian Reserve
 Made corner for fractional sections
 14 & 23 on a Sycamore 16 ins dia
 Land rolling and dry good 2nd rate

South Between sections 2 & 11

- 11.30 a Run 3 links wide West
 15.75 a W Oak 14 ins diam
 40.70 Made half mile corner on a Beech
 8 ins diam
 47.03 a Maple 16 ins diam
 80.50 Made corner for sections 2, 11, 12
 on a Sycamore 14 ins diam

