

J-04
DOSSIER CONTENT
2008 REMON
T.3N., R.14E.,
Chesterfield Township, Macomb County, Michigan

Section One

Index

Pictures in the four cardinal directions; before and after setting the required monumentation.

Section Two

LCRC

Surveyor's Report

Section Three

- 1 Field Notes
- 2 Sketch
- 3 Township Map
- 4 Tax Map 1875
- 5 Tax Map 1895
- 6 Tax Map 1916
- 7 Tax Map 1961
- 8 Tax Map 1974
- 9 Aerial Pictures 2005

Section Four

- 1 1989 Survey-Dunn 30081
- 2 1989 LCRC-Dunn 30081 L4687, P432
- 3 1991 Survey-Stecker 30103
- 4 1995 LCRC-Wright 40165 L6832, P202

J-04 CHESTERFIELD TOWNSHIP

GLO Survey History:

Researching the government survey records for Macomb County I have found that the Chesterfield Township was surveyed and subdivided not according to then in force Manual of Surveying Instructions. Due to presence of Lake St. Clair in the Southeast portion of the Township and numerous Private Claims along the shore exterior boundaries of the Township were established by William Preston, D.S. in 1817 in the following manner and order:

1. South boundary was run East from the Southwest corner.
2. East boundary was run South from the Northeast Twp. corner.
3. North boundary was run West from the Northeast Twp. corner.
4. West boundary was run South from the Northwest Twp. corner.

The subdivision of the Township commenced at the Northeast corner of Section 6: thence run South & West. Thus the closing Sections are along the East and South Township boundaries. Corner was not set-Center of Section 11.

Subsequent Restorations:

1	1989	Survey-Dunn	30081		Set ½" iron rod with cap #30081 East 13.59' Set PK nail S face 30" oak * West 15.30' Set PK nail S face 10" hickory * N45°E 10.90' Set PK nail SE face 6" maple S45°E 17.43' Set PK nail SE face 8" maple
2	1989	LCRC-Dunn	30081	L4687, P432	Set ½" iron rod with cap #30081 East 13.59' Set PK nail S face 30" oak * West 15.30' Set PK nail S face 10" hickory * N45°E 10.90' Set PK nail SE face 6" maple S45°E 17.43' Set PK nail SE face 8" maple
3	1991	Survey-Stecker	30103		Found iron East 13.59' PK nail S face 30" oak * West 15.30' PK nail S face 10" hickory * N45°E 10.90' PK nail SE face 6" maple S45°E 17.43' PK nail SE face 8" maple
4	1995	LCRC-Wright	40165	L6832, P202	F ½" bar w/cap #30081 East 13.59' PK nail S face 30" oak * West 15.30' PK nail S face 10" hickory * NE 10.90' PK nail SE face 6" maple SW 17.43' PK nail SE face 8" maple

Field evidence:

The corner has been perpetuated with the found ½" iron rod w/cap 30081.
Occupation: None.

Distances:

	J-04 to J-03	J-04 to K-04	J-04 to J-05	J-04 to I-04
2685.77'	Remon 2008	2726.42' 1	2709.89' Remon 2008	2761.44' 3
		2726.18' Remon 2008	2758.28' Remon 2008	

Recommendation:

Witnesses from Items 1-4, along with field measurement from Item 1 were used to verify location of found iron rod w/cap. I therefore recommend to the Peer Review Board to accept the above established location for the corner. I recommend replacing found ½" iron rod a 2" aluminum cap stamped "MACOMB COUNTY MONUMENT MOUNT 345: J-04: 43058" placed in a 4"x36" concrete monument.

Witnesses:

N70°E	13.48'	Set PK w/MACOMB COUNTY WITNESS TAG in S face of 34" oak
S20°E	32.01'	Set PK w/MACOMB COUNTY WITNESS TAG in E face 6" elm
S40°W	22.29'	Set PK w/MACOMB COUNTY WITNESS TAG in NW face 6" ash
N30°W	11.03'	Set PK w/MACOMB COUNTY WITNESS TAG in W face 8" maple

Respectfully submitted,

J-04

REMON 2008

CHESTERFIELD TWP., T3N, R14E

DATE: 5/8/08
CREW: AT, JS
OBJECT FOUND: FCI H. DOWN #30081
POINT No.: S-04
CTRL. PTS.: 104+105



N 20° E SET PK W/MACOMB COUNTY
WITNESS TAG IN WEST FACE
6 MAPLE 13.73

N 70° E SET PK W/MACOMB
COUNTY WITNESS TAG IN
FACE 34" OAK 13.48

N 40° W SET PK W/MACOMB
COUNTY WITNESS TAG IN NW FACE
6 ASH 22.29

S 20° E SET PK W/MACOMB
COUNTY WITNESS TAG IN
6 PINE 32.01

OCCUPATION
(if road state surface)
NORTH: NONE
EAST: WOODS
SOUTH: WOODS
WEST: WOODS



J-04
REMON 2008
CHESTERFIELD TWP., T3N, R14E

J-03



N02°49'30"W
2685.77'

ACTUAL POSITION IS
AT THE THEORETICAL

J-04

K-04

I-04

S87°33'54"W
2758.28'

N87°32'54"E
2726.18'

S02°49'30"E
2709.89'

J-05



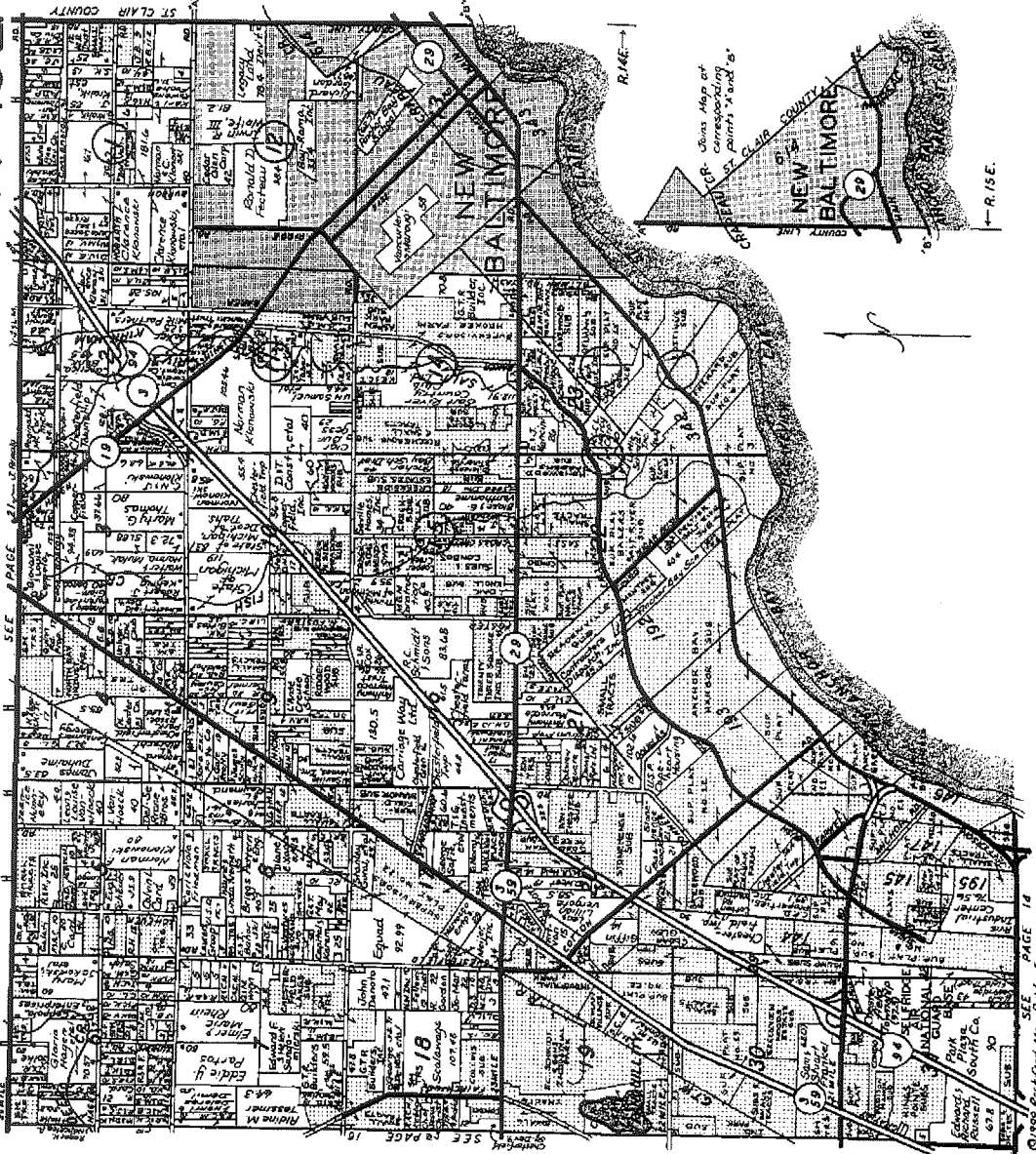
SECTION CORNER



THEORETICAL POSITION OF CENTER OF SECTION

T.3N.-R.14-15E.

CHESTERFIELD



17

Revised County, Mich

 **LINCOLN TITLE COMPANY**
 Flexible closing schedule ❖ Personalized service ❖ Knowledgeable staff
 25962 Knollwood Drive South • Chesterfield, Michigan 48051 • Telephone: (810) 598-2930 • Fax: (810) 598-2936
 OFFICES ALSO IN PORT HURON & ROSEVILLE

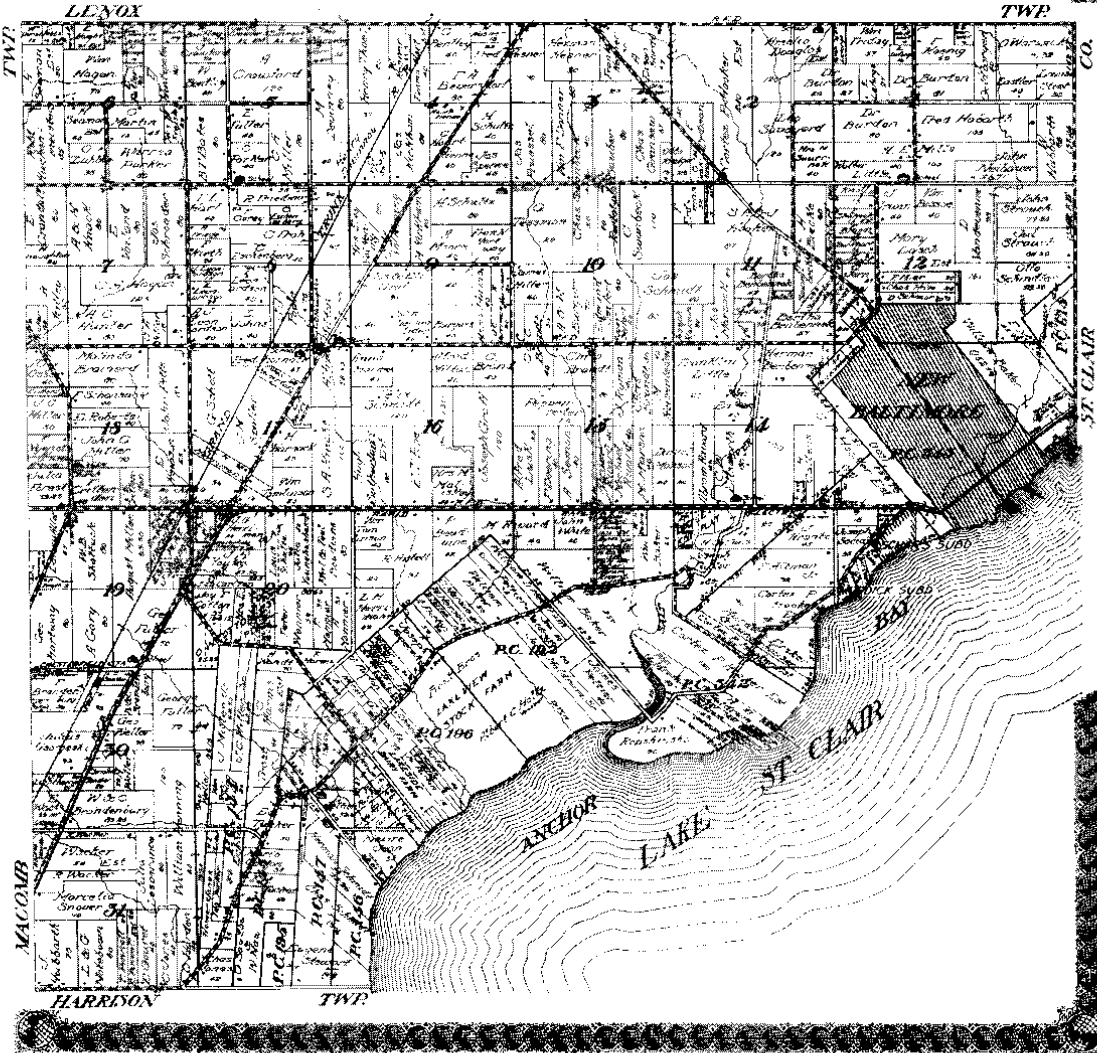
Reproduced with permission of Rockford Map Publishers, Inc. Rockford, Illinois

(MAP OF CHESTERFIELD TOWNSHIP)
TENN. R.R.



MAP OF
CHESTERFIELD
 TOWNSHIP
 Scale 2 inches to 1 mile

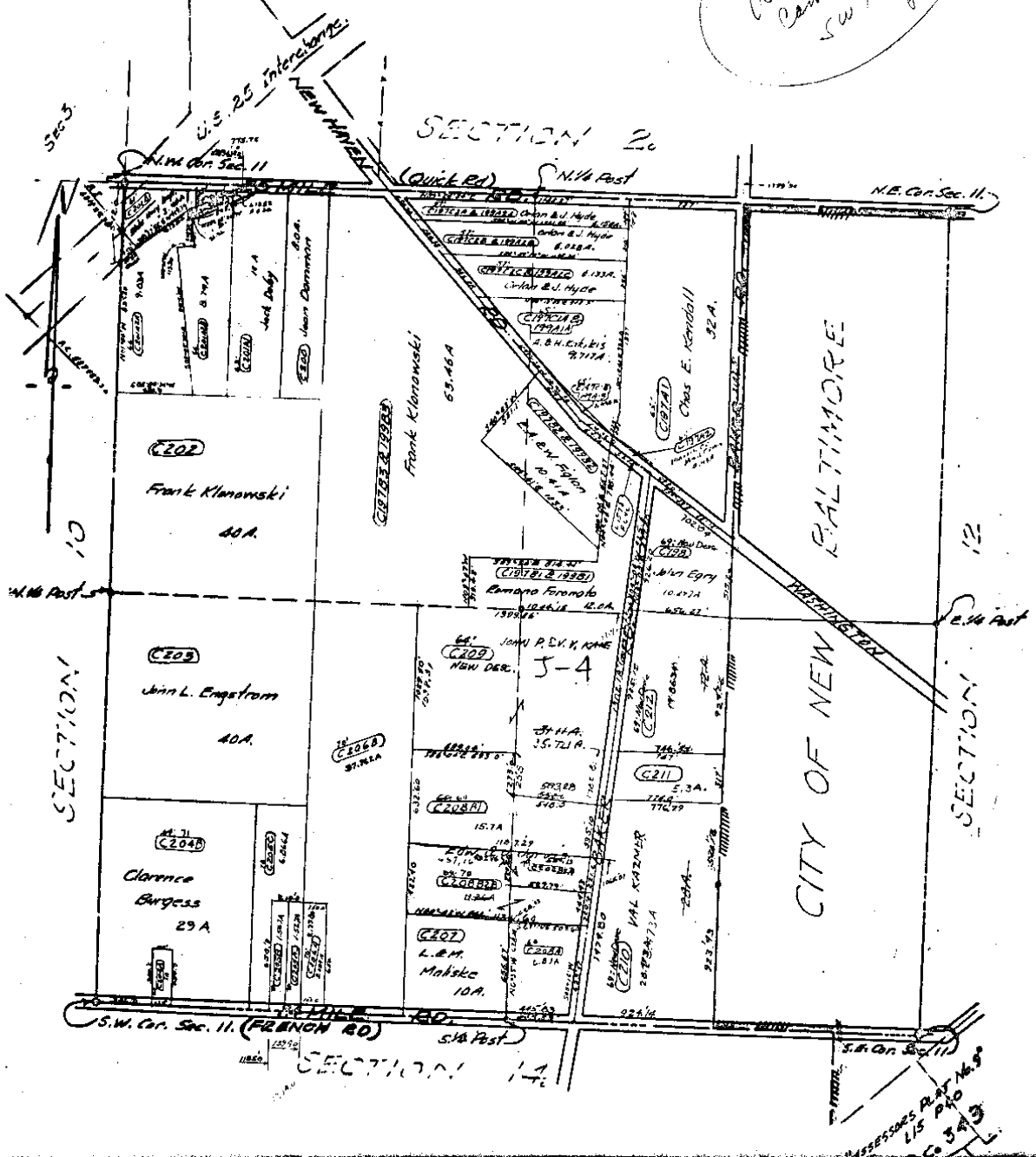
Fractional Township & North, Range 14 East of the Michigan Meridian



CHESTERFIELD TOWNSHIP
SECTION 11. T3N, R14E
SCALE 1"=400'

*Redrawn
 Cannot Seal
 SW 1/4*

443

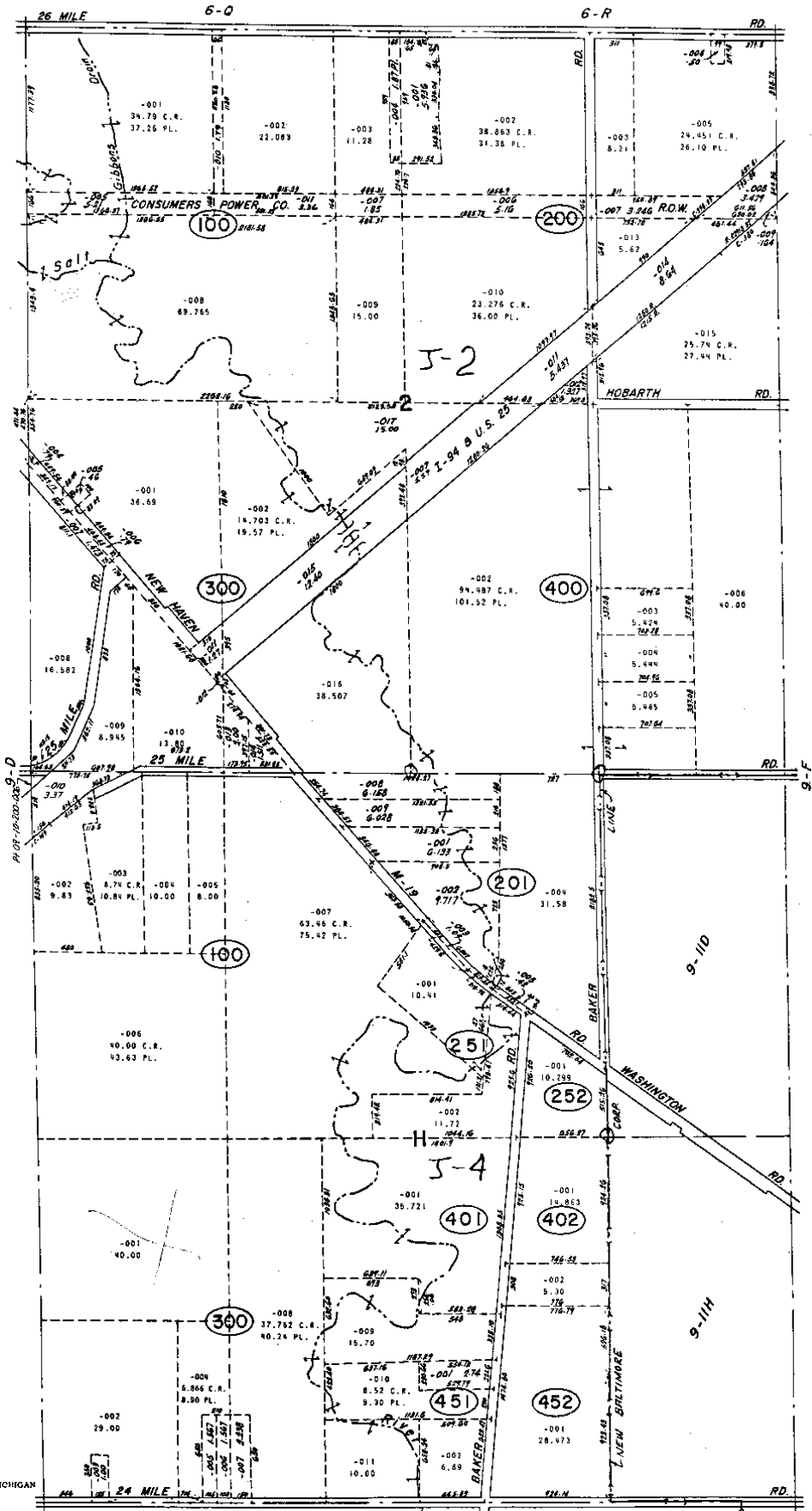


CHESTERFIELD TOWNSHIP
SECTION 10. T3N, R14E
SCALE 1"=400'

SHEET NO 10

SECTION 3

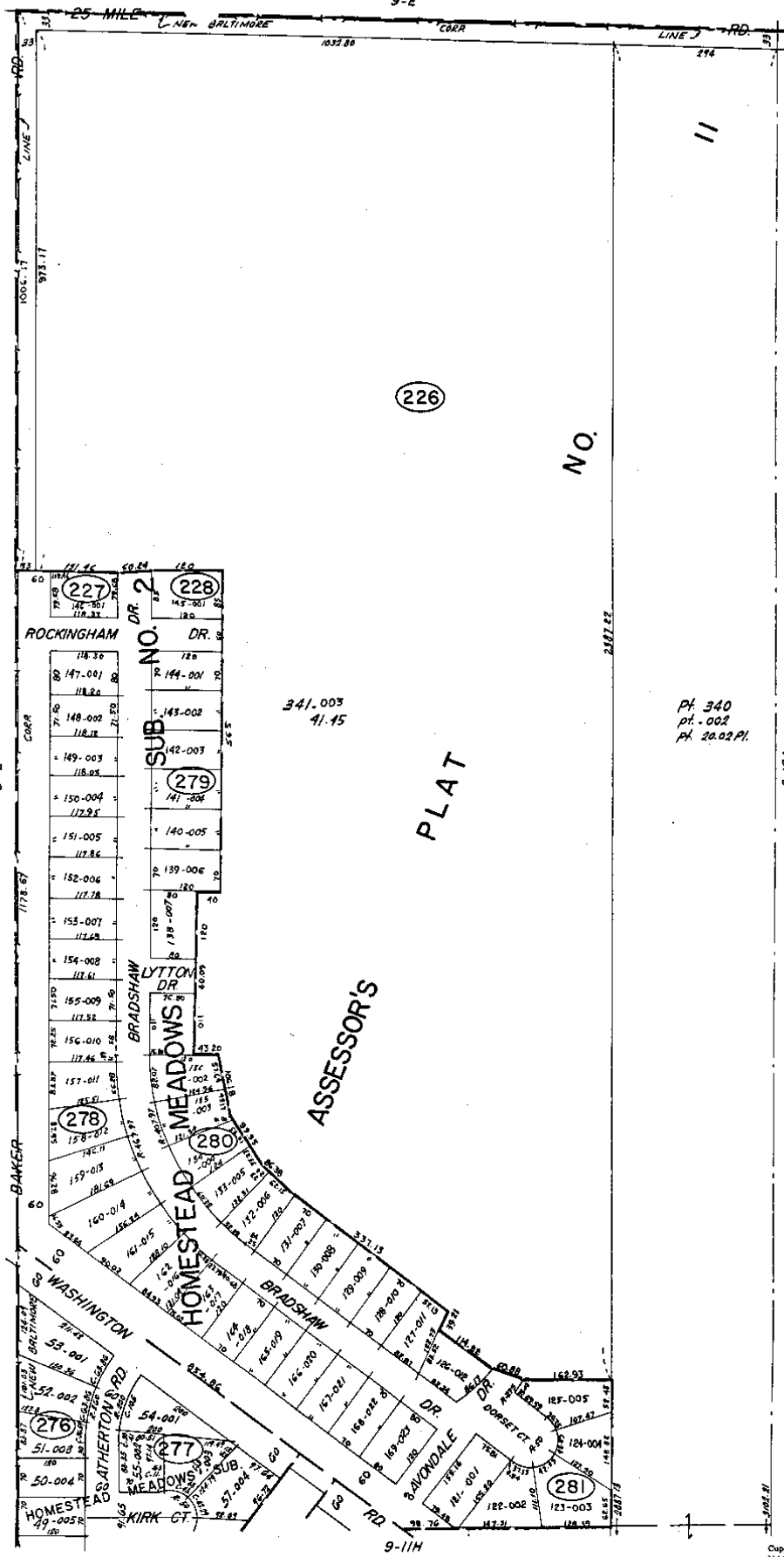
N.E. Cor. Sec. 10



REV. 2-77
REV. 3-75
Copyright 1974
MACOMB COUNTY, MICHIGAN

SCALE: 1" = 400'
589
9-E

NEW BALTIMORE & CHESTERFIELD TWP.
SECS. 2 & 11 T.3N. R.14E.



9-E

1778.67

BAKER

WASHINGTON

ASSATHERTON RD

HOME

(226)

NO.

PLAT

ASSESSOR'S

DR. 2

BRADSHAW

HOMESTEAD

MEADOWS

MEADOWS

MEADOWS

MEADOWS

MEADOWS

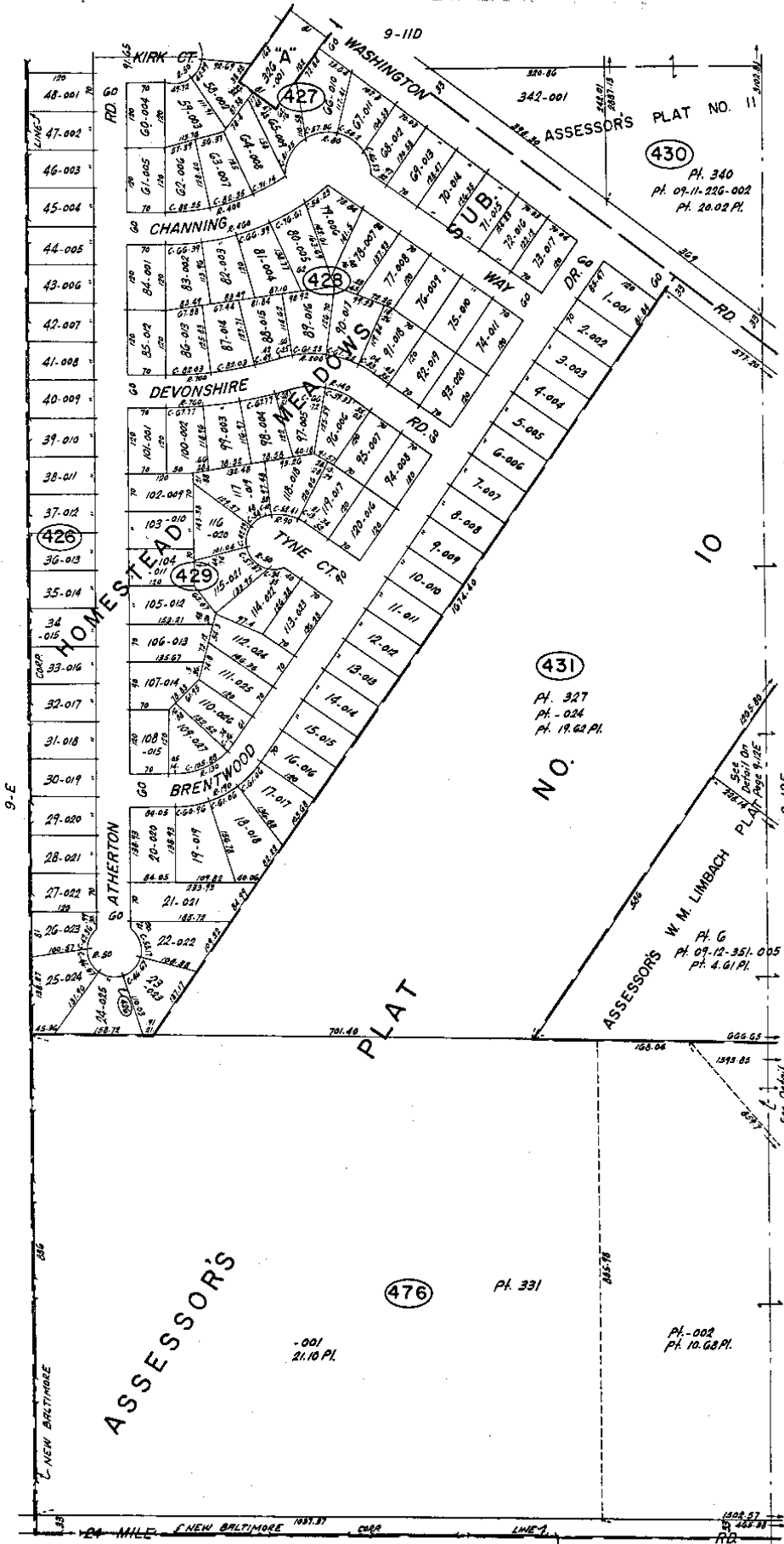
341.003
41.15

Pt. 340
pt. 002
Pt. 20.02 Pt.

9-124

NEW BALTIMORE
E. 1/2 NE. 1/4 SEC. 11 T. 3N, R. 14E.

SCALE: 1" = 100'
611
9-11D



ASSASSOR'S PLAT NO. 10

PLAT NO. 11
 (430)
 Pt. 340
 Pt. 07-11-226-002
 Pt. 20.02 Pl.

(426)

(431)
 Pt. 327
 Pt. -024
 Pt. 19.62 Pl.

(476)
 Pt. 331

-001
 21.10 Pl.

Pt. -002
 Pt. 10.68 Pl.

ASSASSOR'S W. M. LIMBACH
 Pt. G
 Pt. 07-12-351-005
 Pt. 4.61 Pl.

ASSASSOR'S

9-L
 NEW BALTIMORE
 E. 1/2 SE 1/4 SEC. II T3N. R14E.

SCALE: 1" = 100'
 612
 9-11H

Copyright 1974
 MACOMB COUNTY, MICHIGAN

CERTIFICATE OF SURVEY

DUNN & ASSOCIATES LAND SURVEYORS, INC.

MACOMB MEWS BLDG., 7 N. GRATIOT AVE., SUITE 208, MT. CLEMENS, MI 48058

PHONE NUMBER
(313) 465-5553

5-4

CENTER POST SECTION II, T. 3 N., R. 14 E.
SET 1/2" IRON ROD WITH CAP #30081

WITNESSES:

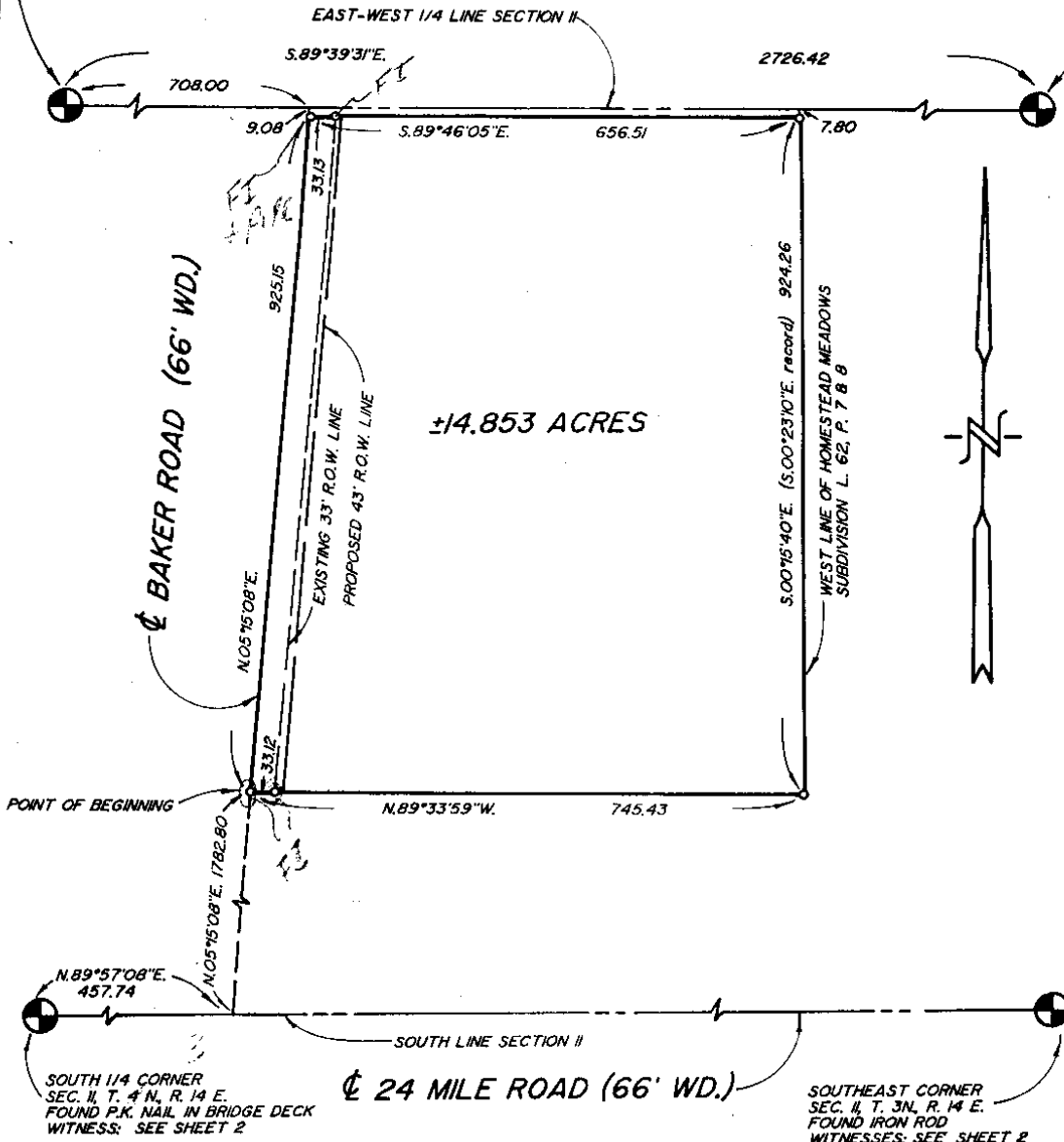
- 1) EAST 13.59, SET P.K. NAIL S FACE 30" OAK
- 2) WEST 15.30, SET P.K. NAIL S FACE 10" HICKORY
- 3) N 45° E 10.90, SET P.K. NAIL SE FACE 6" MAPLE
- 4) S 45° W 17.43, SET P.K. NAIL SE FACE 8" ELM

EAST 1/4 CORNER SEC. II, T. 3 N., R. 14 E.
FOUND 1/2" IRON ROD

WITNESSES:

- 1) WEST 145, SET P.K. NAIL S FACE 36" OAK
- 2) SOUTH 8.28, SET P.K. NAIL NW FACE 36" OAK
- 3) EAST 54.26, SET P.K. NAIL N FACE 40" OAK
- 4) S 30° E 39.50, SET P.K. NAIL W FACE 12" POPLAR

NOTE: ○ INDICATES SET IRON ROD WITH
CAP #30081 UNLESS OTHERWISE NOTED



SOUTH MACOMB ASSOCIATION
CERTIFY TO: BLUE WATER TITLE COMPANY
ADDRESS: 38285 W. 12 MILE ROAD
CITY, STATE & ZIP: FARMINGTON HILLS, MICHIGAN
TWP: CHESTERFIELD SEC. II COUNTY: MACOMB
DATE: 6-4-89 DRAWN BY: SJD
JOB NO.: 89-089 SHEET NO.: 1 OF 2
SCALE: 1" = 200'

I hereby certify that I have surveyed and mapped the
land above and/or described on JUNE 6, 1989
and that the ratio of closure on the unadjusted field
observations of such survey was 1/ 14,314
and that all of the requirements of Public Act 132, of 1970
have been complied with. ALL BEARINGS ARE RELATED TO
THE WEST LINE OF "SUPERVISOR HOOKER FARM SUB-
DIVISION" L. 23, P. 5 M.C.R.

MARTIN C. DUNN LICENSED LAND SURVEYOR #30081

BOOK NO.: 46 PAGE: 27-33

LIBER 046871432

B376998

LAND CORNER RECORDATION CERTIFICATE
Filing Requirement of Act 74, Mich. P.A. 1970

For corners in Macomb

Chesterfield Township
Located in: Corner Code #

RECORDED IN MACOMB COUNTY
RECORDS AT: 10:23A.M.

JUL 21 1989

Edna M. Hill

CLERK - REGISTER OF DEEDS
MACOMB COUNTY, MICHIGAN

Register of Deeds Stamp & File Number

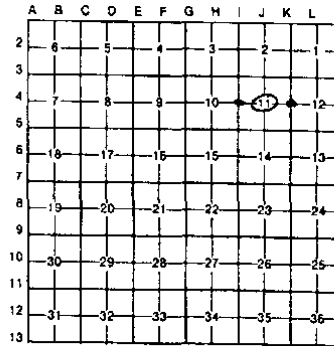
- 1. Public Land Survey T 3N R 14E I-4
T 3N R 14E J-4
T 3N R 14E K-4
2. Property Controlling in Section S 11 T 3N R 14E
3. Miscellaneous Property in Sec. S T R

- 4. Lot No. Recorded Plat
5. Private Claims

I, Martin C. Dunn, in a field survey on June 1, 1989, do hereby certify that under requirements of P.A. 74, Michigan P.A. of 1970, the corner points mentioned in lines 1 and 2 above were in conformance with regulations and rules thereof as required in the current manual of survey instructions of the United States Department of the Interior, Bureau of Land Management or by a decree of a Court of Law and/or that the corner points mentioned in lines 3, 4 and 5 above were in conformance with the rules of the Michigan Board of Land Surveyors or by a Decree of a Court of Law, established, re-established, monumented, re-monumented, recovered, found as expressed below:

NOTE: Not more than 4 corners, all in the same town and range, may be recorded on this certificate.

A. Description of original monument and accessories and/or subsequent restoration:



B. Description of corner evidence found and/or method applied in restoring or reestablishing corner:

- I-4, W 1/2 Corner Section 11, Found 1" Iron Pipe
J-4, Center Post Section 11, Set 1/2" iron Rod with Cap #30081 at the intersection of opposite 1/2 Corners
K-4, E 1/2 Corner Section 11, Found 1/2" Iron Rod



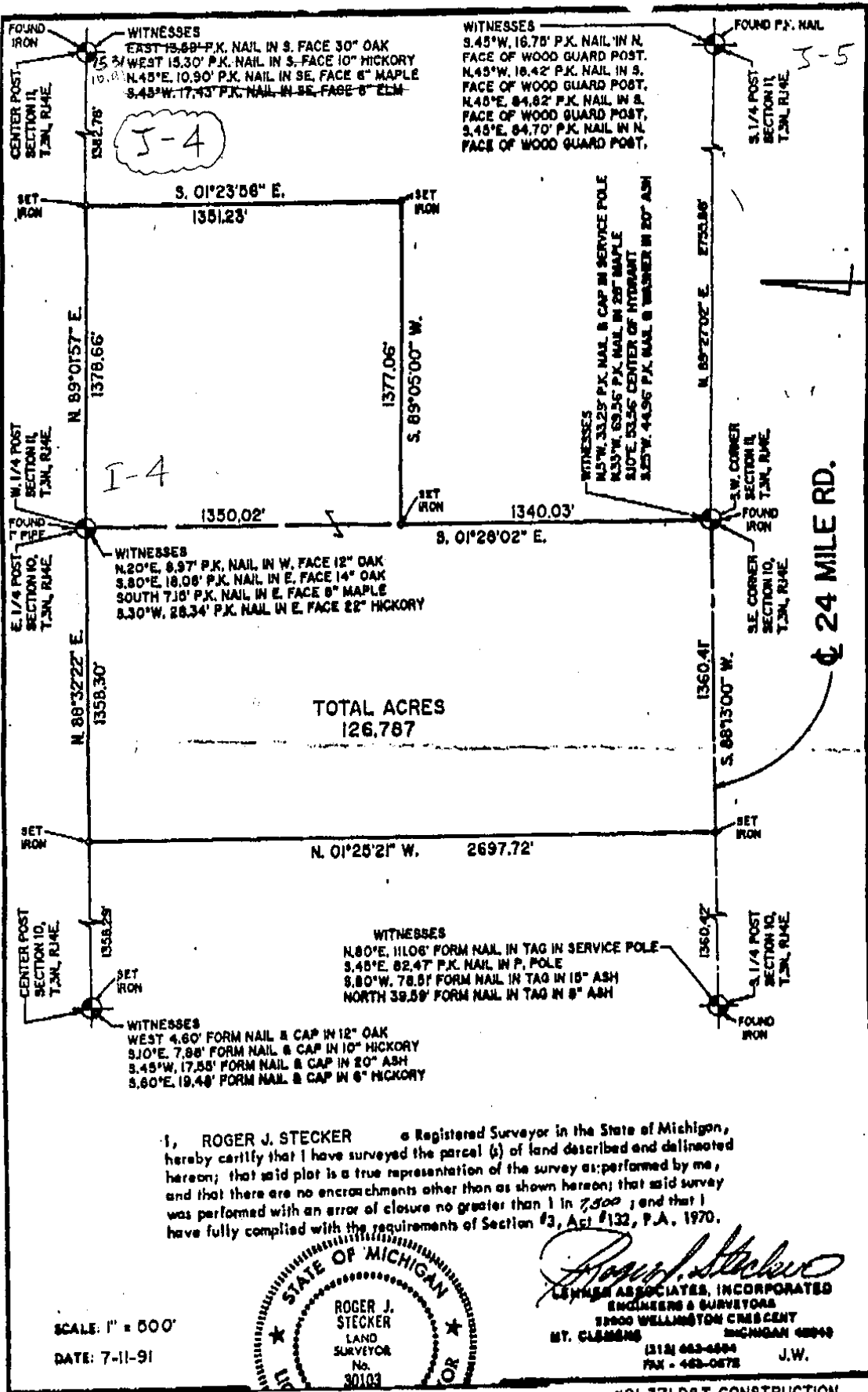
C. Description of monument for corner and accessories established to perpetuate locating the position of the corner:

- I-4, W 1/2 Corner
1. N 20° E 8.97, Set P.K. Nail, W face 12" Oak
2. S 80° E 18.08, Set P.K. Nail, E face 14" Oak
3. South 7.15, Set P.K. Nail, E face 8" Maple
4. S 30° W 28.34, Set P.K. Nail, E face 22" Hickory
K-4, E 1/2 Corner
1. West 1.45, Set P.K. Nail, S face 36" Oak
2. South 8.28, Set P.K. Nail, NW face 36" Oak
3. East 54.26, Set P.K. Nail, N face 40" Oak
4. S 30° E 39.50, Set P.K. Nail, W face 12" Poplar
J-4, Center Post
1. East 13.59, Set P.K. Nail, S face 30" Oak
2. West 15.30, Set P.K. Nail, S face 10" Hickory
3. N 45° E 10.90, Set P.K. Nail, SE face 6" Maple
4. S 45° W 17.43, Set P.K. Nail, SE face 8" Elm

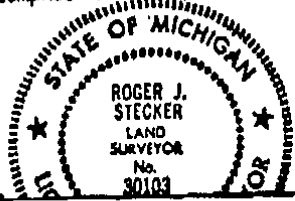
Signed by Martin C. Dunn Date 7/21/89

Surveyor's Michigan License No. 30081

CERTIFICATE OF SURVEY



I, **ROGER J. STECKER** a Registered Surveyor in the State of Michigan, hereby certify that I have surveyed the parcel (s) of land described and delineated hereon; that said plot is a true representation of the survey as performed by me, and that there are no encroachments other than as shown hereon; that said survey was performed with an error of closure no greater than 1 in 7,500; and that I have fully complied with the requirements of Section #3, Act #132, P.A. 1970.



Roger J. Stecker
LENNER ASSOCIATES, INCORPORATED
 ENGINEERS & SURVEYORS
 1800 WELLINGTON CRESCENT
 MT. CLEMENS MICHIGAN 48049
 (313) 663-6884 J.W.
 FAX - 463-0678

SCALE: 1" = 500'
 DATE: 7-11-91

#91-371 DBT CONSTRUCTION

Post-It® brand fax transmittal memo 7871 # of pages 1	From	Robert Stecker
	To	Robert Stecker
	Co.	Lehner Associates
	Dept.	
	Phone #	463-4599
	Fax #	755-5779

3

LAND CORNER RECORDATION CERTIFICATE
 Filing Requirement of Act 74, Mich. P.A. 1970

For corners in

Macomb

Located In: Chesterfield Corner Code #:

- | | | | | | |
|------------------------------------|---|-----|---|------|----------|
| 1. Public Land Survey | T | 3N. | R | 14E. | J-4, K-4 |
| | T | | R | | |
| | T | | R | | |
| | T | | R | | |
| 2. Property Controlling in Section | S | T | R | | |
| | S | T | R | | |
| 3. Miscellaneous Property in Sec. | S | T | R | | |
| | S | T | R | | |
4. Lot No. _____ Recorded Plat _____
 5. Private Claims _____

Register of Deeds Stamp & File Number

I, Jeffrey A. Wright in a field survey on March 28, 19 95

do hereby certify that under requirements of P.A. 74, Michigan P.A. of 1970, the corner points mentioned in lines 1 and 2 above were in conformance with regulations and rules therefore as required in the current manual of survey instructions of the United States Department of the Interior, Bureau of Land Management or by a decree of a Court of Law and/or that the corner points mentioned in lines 3, 4 and 5 above were in conformance with the rules of the Michigan Board of Land Surveyors or by a Decree of a Court of Law; established, re-established, monumented, re-monumented, recovered, found as expressed below:

NOTE: Not more than 4 corners, all in the same town and range, may be recorded on this certificate.

A	B	C	D	E	F	G	H	I	J	K	L	M
2	6	5	4	3	2	1						
3												
4	7	8	9	10	11	12						
5												
6	13	17	16	15	14	13						
7												
8	19	20	21	22	23	24						
9												
10	30	29	28	27	26	25						
11												
12	31	32	33	34	35	36						
13												

A. Description of original monument and accessories and/or subsequent restoration:

B. Description of corner evidence found and/or method applied in restoring or reestablishing corner:

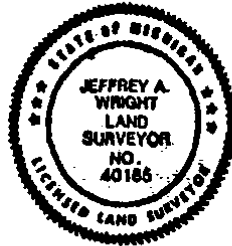
J-4 F - 1/2" bar w/cap #30081

K-4 F - 1/2" bar

C. Description of monument for corner and accessories established to perpetuate locating the position of the corner:

J-4 13.59' E. to PK S. side 30" Oak
 15.30' W. to PK S. side 10" Ash 15.23 m
 10.90' N.E. to PK S.E. side 6" Maple 10.91
 17.43' S.W. to PK S.E. side 8" Elm (dead)

K-4 1.45' W. to PK S. side 36" Oak
 8.28' S. to PK N.W. side 36" Oak
 39.50' S.E. to PK W. side 12" Poplar
 54.64' E. to PK in disk #10705 N. side 40" Oak (4' A.G.L.)



Signed by Jeffrey A. Wright
 Surveyor's Michigan License No. 40185

Date 28 MARCH 1995