

C152292

LAND CORNER RECORDATION CERTIFICATE
Filing Requirement of Act 74, Mich. P.A. 1970

94 DEC 14 AM 10:56

CARMEL M. SABAUGH
REGISTER OF DEEDS
MACOMB COUNTY, MI

LIBER 6527 PAGE 869

Register of Deeds Stamp & File Number

corners in

MACOMB

(County)

Located In: CHESTERFIELD

Corner Code #

Public Land Survey

T 3N R 14E I-7
T R
T R
T R
T R

Property Controlling in Section

S T R
S T R
S T R
S T R

Miscellaneous Property in Sec.

Lot No. , Recorded Plat
Private Claims

STEVEN E. DUNN, in a field survey on APRIL 4, 19 94,

hereby certify that under requirements of P.A. 74, Michigan P.A. of 1970, the corner points mentioned in lines 1 and 2 above were in conformance with regulations and rules therefore required in the current manual of survey instructions of the United States Department of the Interior, Bureau of Land Management or by a decree of a Court of Law and/or that the corner points mentioned in lines 3, 4 and 5 above were in conformance with the rules of the Michigan Board of Land Surveyors or by a Decree of a Court of Law; established, re-established, monumented, re-monumented, recovered, found as expressed below:

NOTE: Not more than 4 corners, all in the same town and range, may be recorded on this certificate.

Grid table with columns A-M and rows 2-13. A dot is present at the intersection of column H and row 7.

Description of original monument and accessories and/or subsequent restoration:

GLO POST - NO EVIDENCE OF ORIGINAL CORNER FOUND
GLO ORIGINAL SURVEY PERFORMED BY PRESTON 2-18-1818

CERTIFICATE OF SURVEY

L. 2336 P. 453-454 WILLIAM E. SODERBERG, #17635 FOUND 1/2" IRON ROD IN MONUMENT BOX OCTOBER 20, 1972

L.C.R.C.

NAME AND NUMBER

DESCRIPTION

DATE

L. 2302 P. 918 ROBERT L. SMITH, #16052 FOUND 1" PIN IN MONUMENT BOX JULY 7, 1972
L. 4687 P. 327 MARTIN C. DUNN, #30081 FOUND 1/2" IRON ROD IN MONUMENT BOX JULY 21, 1989
L. 5158 P. 890 FRANK J. DEDECKER, #8386 FOUND 1/2" IRON ROD IN MONUMENT BOX JULY 25, 1991

Description of corner evidence found and/or method applied in restoring or reestablishing corner:

I-7 SECTION CORNER

FOUND 1/2" IRON ROD IN MONUMENT BOX IN CONCRETE PAVEMENT. VERIFIED LOCATION BY COMPARING FOUND WITNESSES OF ABOVE L.C.R.C.'s AND COMPARED M-DOT DISTANCES TO THE SECTION CORNERS TO THE EAST AND WEST.

FOUND WITNESS TIES

L. 5158, P. 890 AZ. 18° 49.92' CUT "+" IN NORTH RIM OF SANITARY MANHOLE
AZ. 42° 163.35' PK NAIL IN NORTHWEST FACE OF UTILITY POLE
AZ. 279° 182.83' CUT "+" ON TOP OF FIRE HYDRANT CENTERLINE NUT
AZ. 348° 34.45' FORM NAIL IN EAST FACE OF UTILITY POLE

FIELD MEASUREMENTS AND RECORDED DISTANCES

I-7 TO H-7 2714.42' (M.) 2714.46' (R.) M.D.O.T.
I-7 TO J-7 2690.20' (M.) 2690.12' (R.) M.D.O.T.
I-7 TO I-6 2686.40' (M.)



Description of monument for corner and accessories established to perpetuate locating the position of the corner:

I-7 T.3N., R.14E. I REPLACED 1/2" IRON ROD WITH 3/4" x 24" IRON ROD WITH 2" DIAMETER ALUMINUM CAP STAMPED "MACOMB COUNTY MONUMENT MI. ACT 345 #28408" IN MONUMENT BOX.

WITNESSES

AZ. 18° 49.92' FOUND CUT "+" IN NORTH RIM OF SANITARY MANHOLE
AZ. 42° 163.35' FOUND PK NAIL IN NORTHWEST FACE OF UTILITY POLE
AZ. 279° 182.83' FOUND CUT "+" ON TOP OF FIRE HYDRANT CENTERLINE NUT
AZ. 348° 34.45' FOUND FORM NAIL IN EAST FACE OF UTILITY POLE

ACCEPTED BY THE MACOMB COUNTY SURVEY PEER GROUP AS THE OFFICIAL CORNER UNDER MICHIGAN PUBLIC ACT 345 OF 1990 AT A MEETING HELD ON 10-18-94

Signature of William E. Soderberg, P.S., Chairman

THE SELECTED LOCATION IS ACCEPTED BY ME AND IS GENERALLY ACCEPTED BY PROFESSIONAL SURVEYORS AS THE BEST AVAILABLE EVIDENCE OF THE POSITION OF THE ORIGINAL CORNER.

Signed by Steven E. Dunn Date Nov. 9, 1994
Surveyor's Michigan License No. 28408

MACOMB COUNTY

INDEX OF SUPPORTING DOCUMENTATION FOR

N., R. 14 E., CORNER CODE I-7 / PRIVATE CLAIM NO. _____

ITEM TYPE	ITEM DATE
C110 ORIGINAL NOTES AND MEASUREMENTS	2-18-1878
PLAT "HONEYWOOD ADDONS SUB." L. 111 P. 1-3	2-8-1937
CERTIFICATE OF SURVEY L. 7330 P. 453	5-24-1942
L.C.R.C. L. 2302 P. 918	7-7-1972
M.D.O.T RIGHT OF WAY MAP SHT. 45	FEB. 1977
COMPOSITE OF CORNER LOCATION	MAY 1980
L.C.R.C. L. 4687 P. 327	7-21-1989
L.C.R.C. L. 5158 P. 890	7-25-1991
SKETCH OF CORNER RELATIONSHIP	

Town 3 North Range, 14 East

East-Connected between S 10 & 15

40.08 made 1/4 Section corner on a
B. Ash 7 ins diam at average distance
80.16 To Section Corner

South- Between Sections 14 & 15

24.76 an Elm 36 ins diam
40.00 Made half mile corner on a Hornrod
6 ins diam

43.42 a W Oak 14 ins diam

80.10 Set post for sections 14, 15, 22, 23 from
which a Hickory 12 ins diam bears
N 27 W 16 links dist also a 70 Ash 10
ins diam bears S 30 E 11 links dist
1st half mile greatest part dry 2^d part
last half mile rolling and dry good
2nd part Timber W Oak Poplar Birch
Sugar B. Ash & Undergrowth Spice
Hornrod &c

West- On Hornrod between S 15 & 22.

34.00 a Creek 15 links wide S.E.

40.00 Set temporary half mile post

80.17 Intersects West Boundary line at
the corner found part rolling and part
dry 2^d part Timber W Oak Poplar
Birch Birch & Undergrowth Hornrod &c

East- Connected between S. 15 & 22.

40.07 Made 1/4 Section corner on a Hornrod
10 ins diam at average distance

80.17 To Section Corner

South- Between Sections 22 & 23

12.40 a B. Ash 20 in diam

Town 3 North Range 11 East

- 36.26 Salim River 100 links corner S. 26
 40.00 Made half mile corner on a Lym
 60.50 a W Oak 24 ins diam
 60.70 Intersected Private Claims No 342
 16.22 chains East of North corner being
 1st half mile land rolling and dry
 good 2nd rate Ballou's same
 Timber Poplar W. Oak Birch Sugar
 Undergrowth Spruce Set post for
 fractional Section 22 & 23 from which
 a W Oak 24 diam bears North 19 links
 dist - also a W Oak 11 in diam bears N
 74 & 10 links dist

East Between Sections 14 & 23

- 23.74 Salim River 80 links
 40.00 Set half mile post from which a
 Birch 12 ins diam bears S 40 & 35 links
 also a Birch 14 ins diam bears N 30 &
 16 links dist
 67.16 Intersected Private Claims 38.18
 S. M. 7 ins N. E. corner of Indian Reserve
 Made corner for fractional section
 14 & 23 on a Sycamore 46 ins dia
 Land rolling and dry good 2nd rate

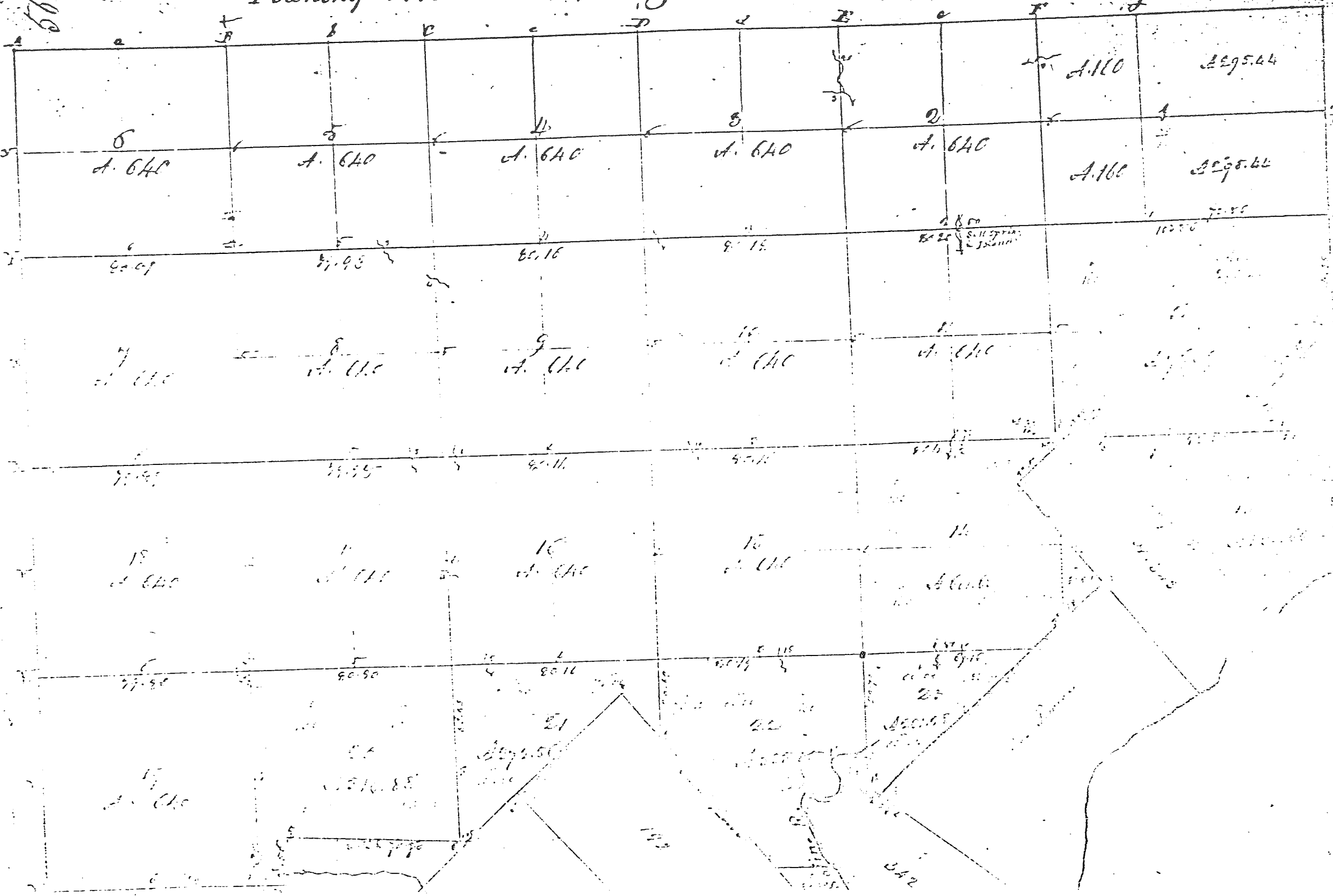
South Between Sections 2 & 11

- 11.30 a Run 3 links wide West
 15.75 a W Oak 14 ins diam
 40.00 Made half mile corner on a Birch
 8 ins diam
 47.03 a Maple 16 ins diam
 80.00 Made corner for sections 2, 11, 12
 on a Sugar be 14 ins diam

Chickadee

B

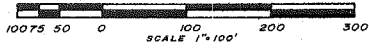
Township N^o. III North, Range N^o. XIV East of the Mer. (Mich. Ter.)



HOMWOOD GARDENS SUBDIVISION

PART OF E. 1/2 OF FRAC. SECTION 22, T.3N., R.14E.
CHESTERFIELD TWP., MACOMB CO., MICHIGAN

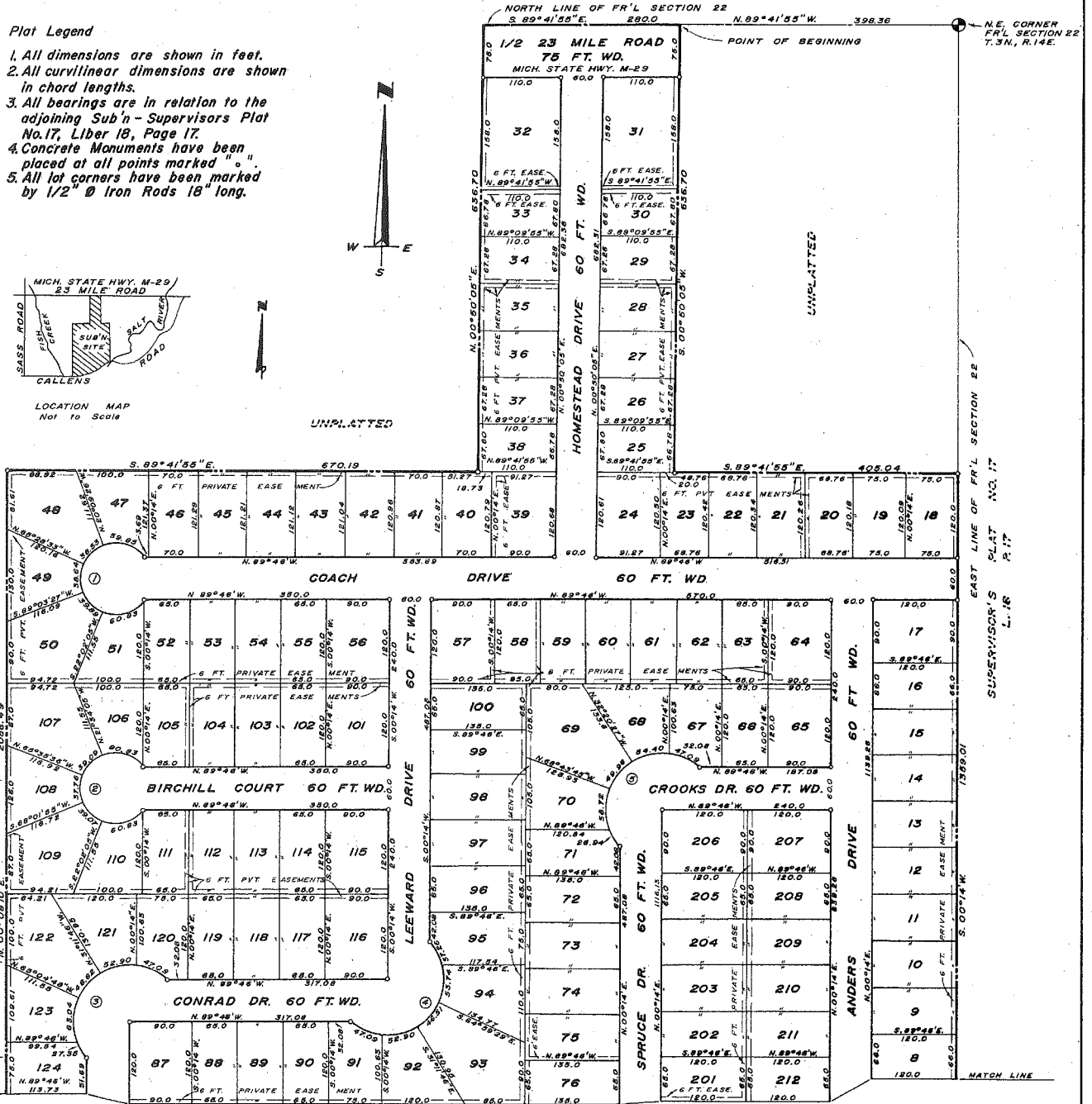
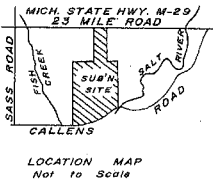
ANDERSON & ASSOCIATES
REG. ENGINEERS & SURVEYORS
MOUNT CLEMENS, MICHIGAN



REGISTER #18450

Plat Legend

- All dimensions are shown in feet.
- All curvilinear dimensions are shown in chord lengths.
- All bearings are in relation to the adjoining Sub'n - Supervisors Plat No. 17, Liber 18, Page 17.
- Concrete Monuments have been placed at all points marked "O".
- All lot corners have been marked by 1/2" Ø Iron Rods 18" long.



RECORDING CERTIFICATE

State of Michigan } S.S.
County of Macomb }

This Plat was received for recording on the 20th day of JULY A.D. 1970 at 10:55 o'clock and is recorded in Liber 61 of Plat Books on Pages 1-2-3.

Raymond R. O'Neil
Edna Miller, Clerk-Register of Deeds
Raymond R. O'Neil, Deputy

CURVE DATA

NO.	RADIUS	DELTA ANGLE	ARC	BR. LONG CHORD	CHORD
1	50.0	286°15'36"	249.81	N.00°14'E.	60.0
2	50.0	286°15'36"	249.81	N.00°14'E.	60.0
3	60.0	172°49'10"	241.30	N.43°14'E.	159.69
4	60.0	172°49'10"	241.30	N.43°14'E.	159.69
5	60.0	172°49'10"	241.30	N.43°14'E.	159.69

Restrictions Limit Page 969
Restrictions 1 2125 Page 534

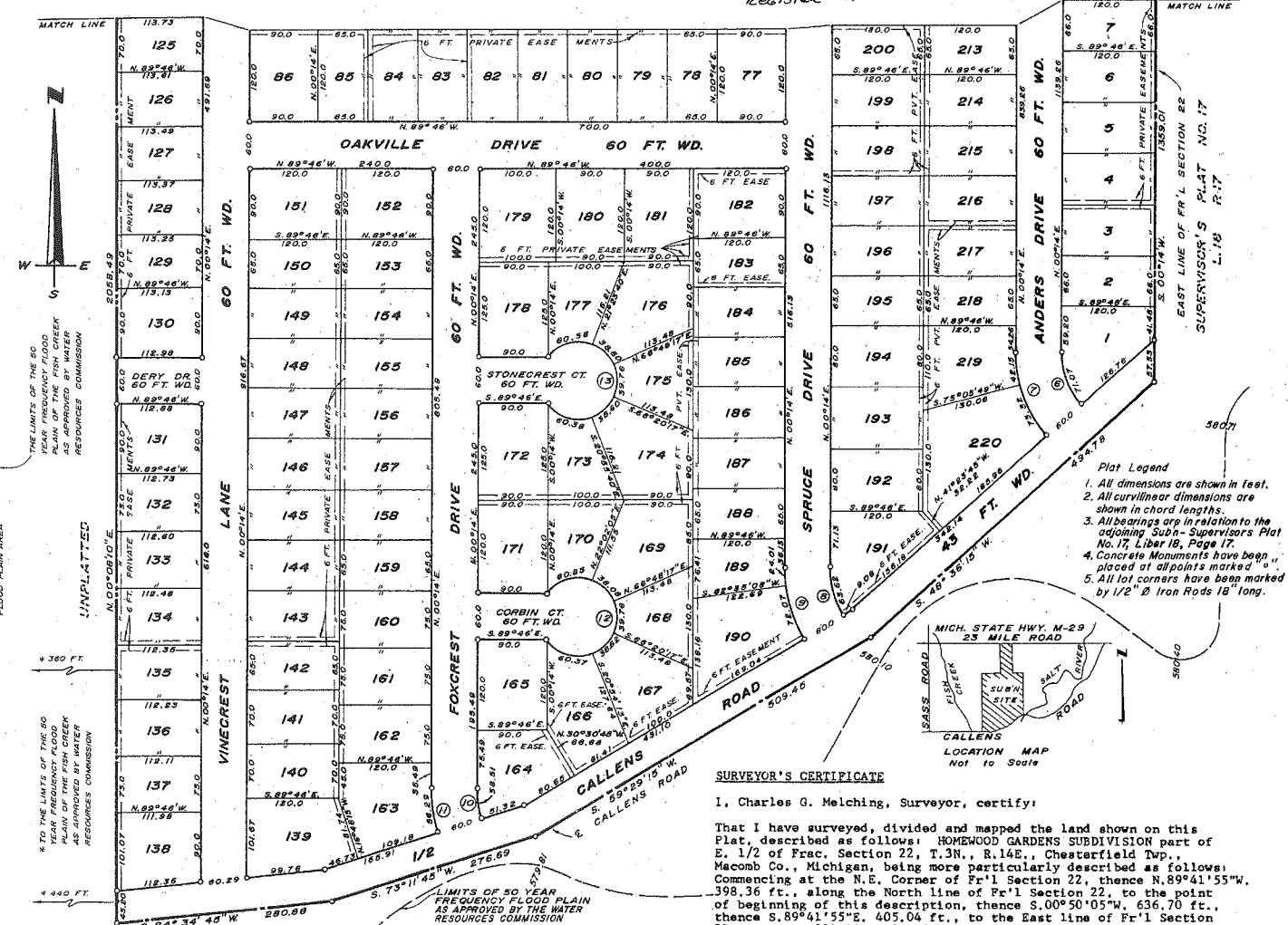
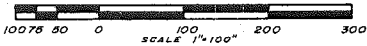
L 61 P 1

RESTRICTIONS L-3117 P-968
RESTRICTIONS L-3145 P-314

HOMWOOD GARDENS SUBDIVISION

PART OF E. 1/2 OF FRAC. SECTION 22, T.3N., R.14E.
CHESTERFIELD TWP., MACOMB CO., MICHIGAN

ANDERSON & ASSOCIATES
REG. ENGINEERS & SURVEYORS
MOUNT CLEMENS, MICHIGAN



- Plat Legend**
1. All dimensions are shown in feet.
 2. All curvilinear dimensions are shown in chord lengths.
 3. All bearings are in relation to the adjoining Subn-Supervisors Plat No. 17, Liber 18, Page 17.
 4. Concrete Monuments have been placed at all points marked "C".
 5. All lot corners have been marked by 1/2" Iron Rods 18" long.

SURVEYOR'S CERTIFICATE

I, Charles G. Melching, Surveyor, certify:

That I have surveyed, divided and mapped the land shown on this Plat, described as follows: HOMWOOD GARDENS SUBDIVISION part of E. 1/2 of Frac. Section 22, T.3N., R.14E., Chesterfield Twp., Macomb Co., Michigan, being more particularly described as follows: Commencing at the N.E. Corner of Fr'1 Section 22, thence N.89°41'55"W., 398.36 ft., along the North line of Fr'1 Section 22, to the point of beginning of this description, thence S.00°50'05"W., 636.70 ft., thence S.89°41'55"E., 405.04 ft., to the East line of Fr'1 Section 22, thence S.00°14'W., 1359.01 ft., along the East line of Fr'1 Section 22, to the center line of Callens Road, thence S.48°36'15"W., 494.78 ft., along the center line of Callens Road, thence S.59°29'15"W., 509.45 ft., along the center line of Callens Road, thence S.73°11'45"W., 276.69 ft., along the center line of Callens Road, thence S.84°34'45"W., 280.88 ft., along the center line of Callens Road, thence N.00°08'10"E., 2058.49 ft., thence S.89°41'55"E., 670.19 ft., thence N.00°50'05"E., 636.70 ft., to the North line of Fr'1 Section 22, thence S.89°41'55"E., 280.0 ft., along the North line of Fr'1 Section 22, to the point of beginning and containing Lots 1 thru 220 inclusive.

That I have made such survey, land-division and plat by the direction of the owners of such land.

That such plat is a correct representation of all the exterior boundaries of the land surveyed and the subdivision of it.

That the required monuments and lot markers have been located in the ground or that surety has been deposited with the municipality, as required by Section 125 of the Act.

That the accuracy of survey is within the limits required by Section 126 of the Act.

That the bearings shown on the plat are expressed as required by Section 126 (3) of the Act and as explained in the legend.

RECORDING CERTIFICATE

State of Michigan } S.S.
County of Macomb }

This Plat was received for recording on the 20th day of July, A.D. 19 70 at 2:55 o'clock and is recorded in Liber 61 of Plat Books on Pages 1-2-3.

Raymond R. Craig
Edna Miller, Clerk-Register of Deeds
Raymond R. Craig, Deputy



8-16-69
Date

8-16-69
Date

Anderson & Associates
217-219 Mt. Clemens
Savings Bank Building
Mt. Clemens, Michigan 48043

by *Charles G. Melching*
Charles G. Melching
Registered Land Surveyor
No. 14767

Warren R. Anderson
Warren R. Anderson (Principal)
Registered Civil Engineer
No. 9445

CURVE DATA				
NO.	RADIUS	DELTA ANGLE	ARC	CHORD
6	100.0	41°37'45"	72.86	N.20°34'53"W. 71.07
7	160.0	41°37'45"	116.25	N.20°34'53"W. 113.71
8	120.0	30°44'48"	64.39	N.15°08'23"W. 63.62
9	180.0	30°44'45"	96.59	N.15°08'23"W. 93.44
10	130.0	17°02'15"	39.65	N.8°17'08"W. 38.51
11	190.0	17°02'15"	56.50	N.8°17'08"W. 56.29
12	50.0	286°15'36"	249.81	N.00°14'E. 60.0
13	50.0	286°15'36"	249.81	N.00°14'E. 60.0

L61 P2

HOMWOOD GARDENS SUBDIVISION

PART OF E. 1/2 OF FRAC. SECTION 22, T.3N., R.14E.
CHESTERFIELD TWP., MACOMB CO., MICHIGAN

ANDERSON & ASSOCIATES
REG. ENGINEERS & SURVEYORS
MOUNT CLEMENS, MICHIGAN

Register # A-18450

PROPRIETOR'S CERTIFICATE

We, as proprietors, certify that we caused the land embraced in this plat to be surveyed, divided, mapped and dedicated as represented on this plat and that the Streets are for the use of the public; that the Public Utility Easements are private Easements and that all other Easements are for the uses shown on the plat.

Witnesses:

Harry J. Bueker
Harry J. Bueker
50000 Galkens Road
New Baltimore, Michigan 48047

Josephine G. Bueker
Josephine G. Bueker
50000 Callens Road
New Baltimore, Michigan 48047

Cornelia Gippich
Cornelia Gippich
23013 Clairwood Ave.
St. Clair Shores, Michigan 48080

Christine T. Gippich
Christine T. Gippich
13505 Marthum
Warren, Michigan 48093

Clifford J. Fields
Clifford J. Fields
Notary Public
Macomb County, Michigan

ACKNOWLEDGEMENT

State of Michigan) s.s.
Macomb County)

Personally came before me this 18th day of August, 1969, the above named Harry J. Bueker and Josephine G. Bueker, his wife, and Cornelia Gippich and Christine T. Gippich, to me known to be the persons who executed the foregoing instrument and acknowledged that they executed the same as their free act and deed.

My commission expires:
Oct 22-1972

PROPRIETOR'S CERTIFICATE

Hilson Corporation, a corporation duly organized and existing under the laws of the State of Michigan by Charles Gilson, President and Fred Birkhill, Secretary, as Proprietor, has caused the land to be surveyed, divided, mapped and dedicated as represented on this plat and that the Streets are for the use of the public; that the Public Utility Easements are private Easements and that all other Easements are for the uses shown on the plat.

Witnesses:

Clifford J. Fields
Clifford J. Fields
Notary Public
Macomb County, Michigan

Charles Gilson
Charles Gilson, President

Fred Birkhill
Fred Birkhill, Secretary

ACKNOWLEDGEMENT

State of Michigan) s.s.
Macomb County)

Personally came before me this 4th day of Sept, 1969, Charles Gilson, President and Fred Birkhill, Secretary, of the above named corporation, to me known to be the persons who executed the foregoing instrument and to me known to be such President and Secretary of said corporation, and acknowledged that they executed the foregoing instrument as such officers as the free act and deed of said corporation, by its authority.

My commission expires:
Oct 22-1972

Clifford J. Fields
Clifford J. Fields
Notary Public
Macomb County, Michigan

COUNTY TREASURER'S CERTIFICATE

The records in my office show no unpaid taxes or special assessments for the five years preceding Jan 27-1970 involving the lands included in this Plat. # 185

Adam E. Nowakowski
Adam E. Nowakowski, County Treasurer
Macomb County HELEN PAULUS
CLERK

COUNTY DRAIN COMMISSIONER'S CERTIFICATE

Approved on Feb 17th 1970 as complying with Section 192 of Act 288, P.A. 1967 and the applicable rules and regulations published by my office in the County of Macomb.

Thomas S. Welsh
Thomas S. Welsh, Drain Commissioner
A.G. HAZEN DEPUTY

CERTIFICATE OF COUNTY ROAD COMMISSIONERS

Approved on Feb 3, 1970 as complying with Section 183 of Act 288, P.A. 1967 and the applicable published rules and regulations of the Board of Road Commissioners of Macomb County.

Lawrence Gahnke
Lawrence Gahnke, Member

Ernest W. McCollom
Ernest W. McCollom, Vice Chairman

Keith Bovenschen
Keith Bovenschen, Chairman

CERTIFICATE OF MUNICIPAL APPROVAL

I certify that this Plat was approved by the Township Board of the Township of Chesterfield at a meeting held February 14, 1970 and was reviewed and found to be in compliance with Act 288, P.A. 1967, also adequate surety has been deposited with the clerk for the placing of monuments and markers within a reasonable length of time, not to exceed one year from the above date. That the Minimum fee with and one required by Section 186, Act 288, P.A. 1967, has been waived and confirmed with the legally adopted ordinance of the Township of Chesterfield and that adequate security has been deposited to insure the installation of sewer and water facilities within the plat.

Gloria Gaike
Gloria Gaike, Clerk

COUNTY PLAT BOARD CERTIFICATE

This Plat has been reviewed and is approved by the Macomb County Plat Board on FEB 18, 1970 as being in compliance with all of the provisions of Act 288, P.A. 1967, and the Plat Board's applicable rules and regulations.

Edna Miller
Edna Miller, Clerk-Register of Deeds

John J. Zoccola
John J. Zoccola, Chairman, Board of Supervisors

Adam E. Nowakowski
Adam E. Nowakowski, County Treasurer

CERTIFICATE OF DEPARTMENT OF STATE HIGHWAYS

Approved on May 8, 1970 as complying with Act 288, P.A. 1967 and the applicable published rules and regulations of the Department of State Highways.

Michigan State Highway Commission

Henrik E. Stafseth
Henrik E. Stafseth
State Highway Director

RECORDING CERTIFICATE

State of Michigan) s.s.
County of Macomb)

This Plat was received for recording on the 2nd day of July A.D. 1970 at 10:55 o'clock and is recorded in Liber 61 of Plat Books on Pages 1-2-3.

Edna Miller
Edna Miller, Clerk-Register of Deeds
Raymond R. Ceas
Raymond R. Ceas, Deputy

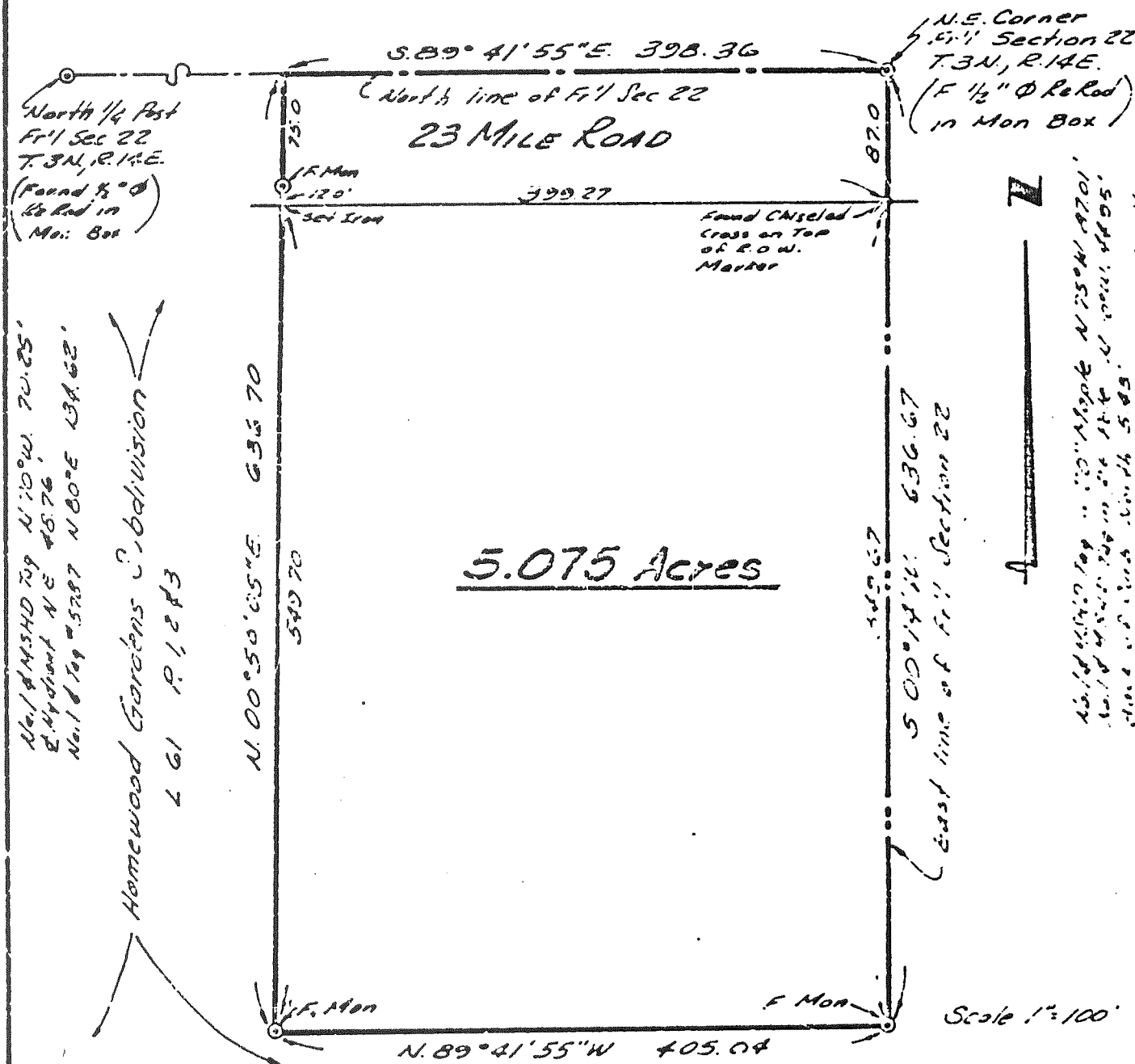
EXAMINED AND APPROVED

Date JUNE 29, 1970

Allison Green
Allison Green
STATE TREASURER
By Richard E. Loman
Richard E. Loman, Pay Examiner

ORIGINAL

CERTIFICATE OF SURVEY A150311

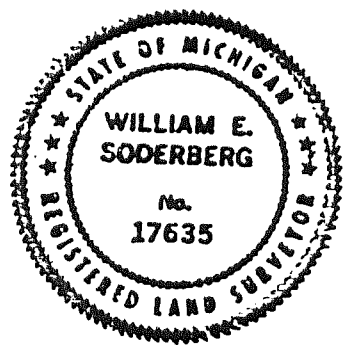


PLAT OF SURVEY

Part of N.E. 1/4 of Fr 1 Sec 22 T. 3N, R. 14E.
Chesterfield Twp., Macomb Co., Michigan

RECORDED IN MACOMB COUNTY
RECORDS AT: 7:00 A.M.
OCT 20 1972

Edna H. Miller
CLERK - REGISTER OF DEEDS
MACOMB COUNTY, MICHIGAN



Bearings Relate to
"Homewood Gardens Subdivision"
L. 61 P. 1, 2 & 3

Field Survey By:
William E. Soderberg
Registered Land Surveyor

CHARLES G. MELCHING
AND ASSOCIATES INC.
Consulting Land Surveyors
6836 1/2 S. Main St.
Richmond, Michigan 48062
707-1360

Sht 1 of 2

Field Survey Made
5-15-72

Job No 77-03
5-24-72

ORIGINAL

Description

A parcel of land in and being a part of the N.E. 1/4 of Fr'l Section 22, T.3N., R.14E., Chesterfield Township, Macomb County, Michigan and being more particularly described as follows:

Beginning at the N.E. Corner of Fr'l Section 22, thence S.00°14'W. 636.67 ft., along the East line of Fr'l Section 22, to the N.E. Corner of Lot 1st of "HOLMEWOOD GARDENS SUBDIVISION" (1.61 P.1,2,3 M.C.R.) thence N.89°41'55"W. 405.04 ft., along the North line of Lots 18, 19, 20, 21, 22 & 23 of said Subdivision to the S.E. Corner of lot 25 of said Subdivision, thence N.00°50'05"E. 636.70 ft., along the East line of Lots 25, 26, 27, 28, 29, 30 & 31 of said Subdivision to the North line of Fr'l Section 22, thence S.89°41'55"E. 398.36 ft., along the North line of Fr'l Section 22, to the point of beginning, excepting the North 87 feet thereof for Highway purposes, and containing 5.075 Acres of land. Subject to easements of record.

SURVEYOR'S CERTIFICATE: I hereby certify that I have surveyed and mapped the land above platted and/or described on 15 May 72, and that the ratio of closure on the unadjusted field observations of such survey was 1:5000, and that all of the requirements of P.A. 132.1070 have been complied with.

Charles G. Melching
and Associates Inc.

by William E. Soderberg
William E. Soderberg
Registered Land Surveyor
No. 17635
68364 South Main
Richmond, Michigan



SH 2 of 2
Job No 72-081
5-25-72

LAND CORNER RECORDATION CERTIFICATE

FILING REQUIREMENT OF ACT 74, MICH. P.A. 1970

LIBER **2302** PAGE **918**

CHESTERFIELD TOWNSHIP, MACOMB COUNTY

A130597

FOR CORNERS OF—	N/W 1/4	LOCATED IN—	Sec. 23	CORNER CODE NUMBER
1. PUBLIC LAND SURVEY	T. 3	N. 3 R. 14	XX	J-7, I-7
2. PROPERTY CONTROLLING IN SECTION	T. _____	N. _____ S. _____	R. _____	_____
3. MISCELLANEOUS PROPERTY IN SECTION	T. _____	N. _____ S. _____	R. _____	_____
4. LOT NO. _____	RECORDED PLAT _____			
5. PRIVATE CLAIMS _____				

RECORDED IN MACOMB COUNTY
RECORDS AT: 8:45 A.M.
JUL 7 1972

Edna Miller
CLERK - REGISTER OF DEEDS
MACOMB COUNTY, MICHIGAN

REGISTER OF DEEDS STAMP AND
FILING NUMBER

I, Robert L. Smith do hereby certify that under requirements of P.A. 74, Michigan P.A. of 1970, the corner points mentioned in lines 1 and 2 above (identified with circles on index code diagram—over) were, in a field survey on January 1972, established, re-established, monumented, re-monumented, recovered or restored as expressed below and in conformance with regulations and rules therefore as required in the current manual of survey instructions of the United States Department of the Interior, Bureau of Land Management or by a decree of a court of law. Furthermore, that the corner points mentioned in lines 3, 4 and 5 above were, in a field survey on _____ 19____, found, recovered, restored, established or re-established as expressed below and in conformance with the rules of the Michigan State Board of Registration for Land Surveyors or, by a Decree of a Court of law:

A. Description of original monument and accessories and/or subsequent restoration:

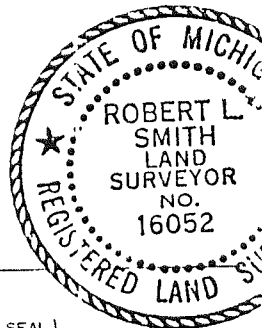
B. Description of corner evidence found and/or method applied in restoring or re-establishing corner:

J-7 Found 1" Pin in Monument Box
I-7 Found 1" Pin in Monument Box

C. Description of monument for corner and accessories established to perpetuate locating the position of the corner:

J-7 PK nail in power pole - N. 45° E. 110.00
J-7 PK nail in power pole - N. 20° W. 103.00
J-7 PK nail in power pole - N. 70° W. 80.19
I-7 PK nail in 24" Maple N. 45° W. 87.06
I-7 PK nail in power pole N. 10° W. 44.85
Mont. box is 5.35' S. of N. B/C & 3.82' W. of expansion joint

SIGNED BY <u>Robert L. Smith</u>	DATE <u>6-5-72</u>
SURVEYOR'S MICHIGAN REGISTRATION NO. <u>16052</u>	(SEAL)
FOR STATE AND UNITED STATES AGENCIES:	
SIGNED BY _____	DATE _____
<small>CHIEF OF SURVEY PARTY</small>	
APPROVED AND SIGNED BY _____	DATE _____
<small>MICHIGAN REGISTERED LAND SURVEYOR</small>	(SEAL)



SURVEYOR'S MICHIGAN REGISTRATION NO. _____

3.-

00147

PI=63+02.22
PT=66+73.38
PI=86+03.90
PT=88+82.47

STATION EQUATION
STA 66+73.38K
STA 66+72.77AH
LINE LENGTHS 0.61'
STATION EQUATION
STA 88+82.47BK
STA 88+82.17AH
LINE LENGTHS 0.30'

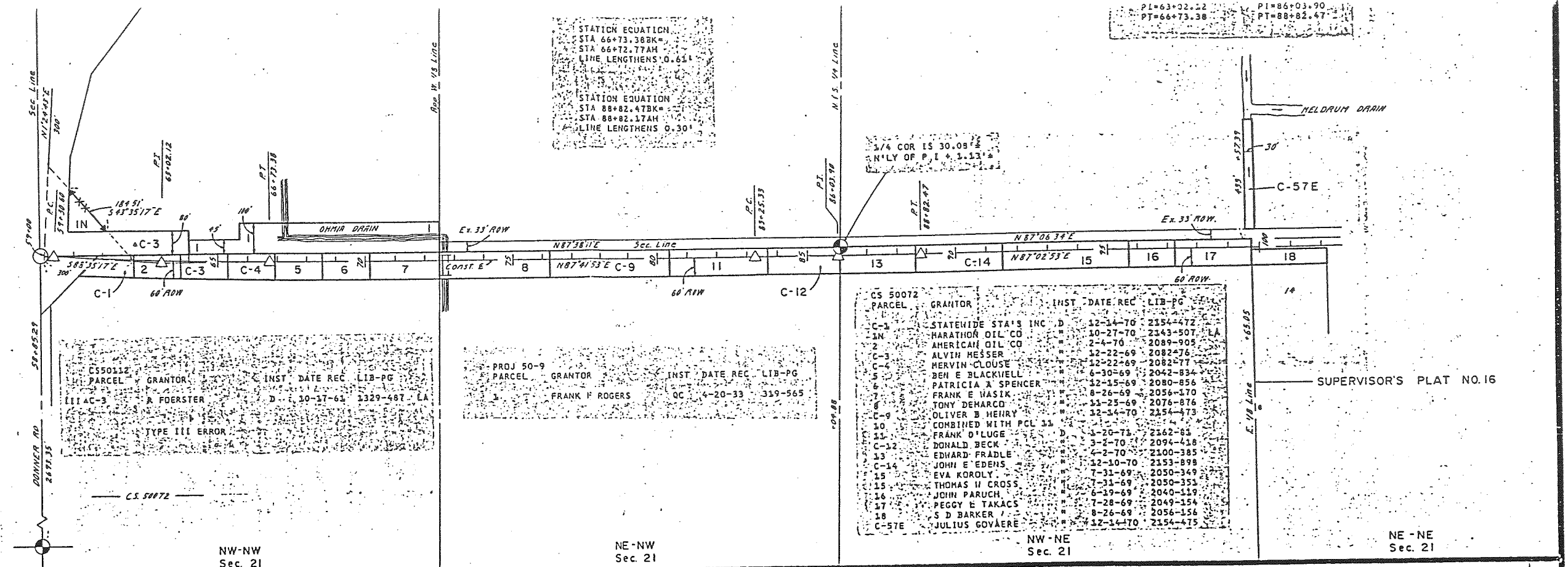
1/4 COR IS 30.09'
N'LY OF P.I. 3.13'

For ROW on
I-94
see sheet 141

PARCEL	GRANTOR	INST. DATE	REC.	LIB-PG
CS 50112	R FORSTER	D	10-17-61	3329-487 LA

PARCEL	GRANTOR	INST. DATE	REC.	LIB-PG
PROJ 50-9	FRANK F ROGERS	OC	4-20-33	339-565

PARCEL	GRANTOR	INST. DATE	REC.	LIB-PG
C-1	STATEWIDE STA'S INC	D	12-14-70	2154-472
1A	HARATHON OIL CO		10-27-70	2143-507 LA
2	AMERICAN OIL CO		2-4-70	2089-905
C-3	ALVIN MESSER		12-22-69	2082-76
C-4	MERVIN CLOUSE		12-22-69	2082-77
5	BEH E BLACKWELL		6-30-69	2042-834
6	PATRICIA A SPENCER		12-15-69	2080-856
7	FRANK E WASIK		8-26-69	2056-170
8	TONY DEMARCO		11-25-69	2076-876
C-9	OLIVER B HENRY		12-14-70	2154-475
10	COMBINED WITH PCL 33			
11	FRANK D LUGE	D	3-20-73	2162-84
C-12	DONALD BECK		3-1-70	2094-418
13	EDWARD FRADLE		4-2-70	2100-385
C-14	JOHN E EDENS		12-10-70	2153-899
15	EVA KOROLY		7-31-69	2050-349
15	THOMAS H CROSS		7-31-69	2050-353
16	JOHN PARUCH		6-19-69	2040-119
17	PEGGY E TAKACS		7-28-69	2049-154
18	S D BARKER		8-26-69	2056-156
C-57E	JULIUS GOVAERE		12-14-70	2154-475



SE-SE
Sec 16

SW-SW
Sec 15

CHESTERFIELD TWP
T3N-R14E
SE-SW
Sec 15

SW-SE
Sec 15

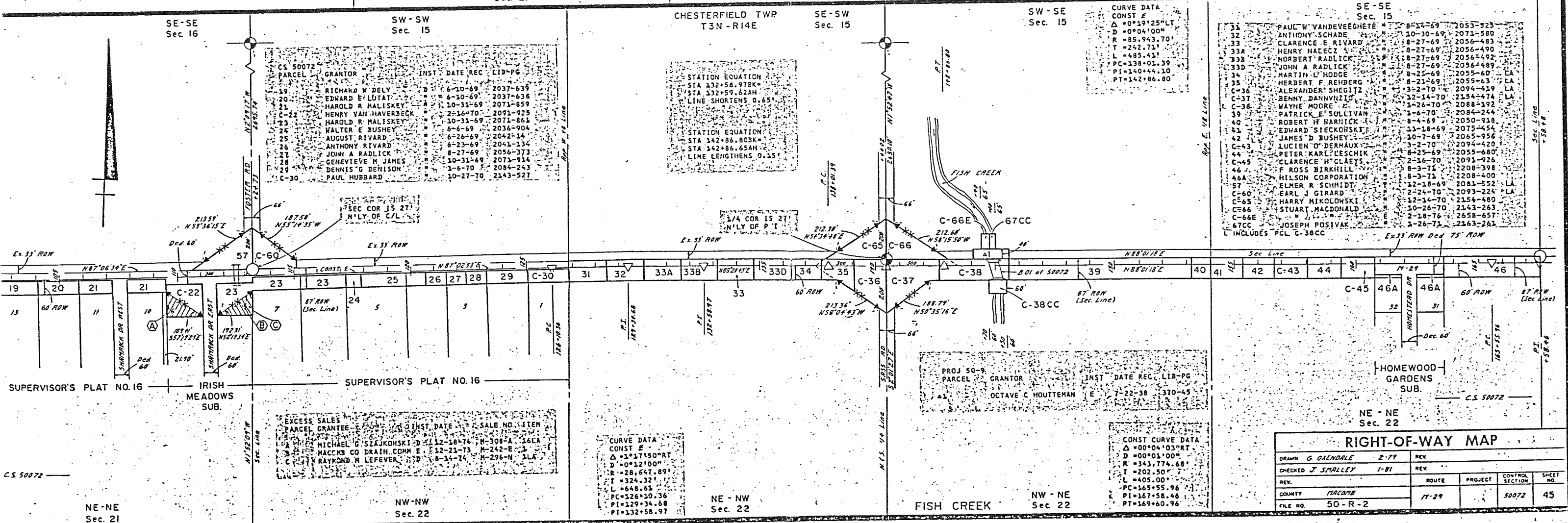
SE-SE
Sec 15

PARCEL	GRANTOR	INST. DATE	REC.	LIB-PG
19	RICHARD M DELY	D	6-10-69	2037-639
20	EDWARD E LUTAT		6-10-69	2037-638
21	HAROLD R MALISKEY		10-31-69	2071-859
22	HENRY VAN HAVERBECK		2-16-70	2091-925
23	HAROLD R MALISKEY		10-31-69	2071-861
24	WALTER E BUSHEY		6-6-69	2036-904
25	AUGUST RIVARD		6-26-69	2042-14
26	ANTHONY RIVARD		6-23-69	2041-136
27	JOHN A RADLICK		8-27-69	2056-373
28	GENEVIEVE M JAMES		10-31-69	2071-914
29	DENNIS G DEHLSON		1-6-70	2084-243
C-30	PAUL HUBBARD		10-27-70	2143-527

STATION EQUATION
STA 132+58.97BK
STA 132+59.62AH
LINE SHORTENS 0.65'
STATION EQUATION
STA 142+86.80BK
STA 142+86.65AH
LINE LENGTHS 0.15'

CURVE DATA
CONST E
Δ = 0°19'25"LT
D = 0°04'00"
R = 85.943.70'
T = 242.71'
L = 485.41'
PC = 138+01.39
PI = 140+44.10
PT = 142+86.80'

31	PAUL W VANDEVEEGHETE		8-14-69	2053-925
32	ANTHONY SCHADE		10-30-69	2071-580
33	CLARENCE E RIVARD		8-27-69	2056-483
33A	HENRY NACECZ		8-27-69	2056-490
33B	NORBERT RADLICK		8-27-69	2056-492
33D	JOHN A RADLICK		8-27-69	2056-489
34	MARTIN L HODGE		8-21-69	2055-63 LA
35	HERBERT F REHBERG		8-21-69	2055-63 LA
C-36	ALEXANDER SHEGIZ		3-2-70	2094-419 LA
C-37	BENNY DANVHZIO		12-14-70	2154-474 LA
C-38	WAYNE MOORE		1-26-70	2088-192
39	PATRICK E SULLIVAN		1-6-70	2084-244
40	ROBERT H NARHICK		8-4-69	2050-918
41	EDWARD SIECKOSKI		11-18-69	2075-154
42	JAMES D BUSHEY		10-7-69	2065-956
C-43	LUCIEN O DERMAUX		3-2-70	2094-420
44	PETER KARL LESCHIK		8-25-69	2055-680
C-45	CLARENCE H CLAEYS		2-16-70	2091-926
46	F ROSS BIRKILL		8-3-71	2208-398
46A	HILSON CORPORATION		8-3-71	2208-400
57	ELMER R SCHMIDT		12-18-69	2081-552 LA
C-60	EARL J GIRARD		2-24-70	2093-224 LA
C-65	HARRY MIKOLDOWSKI		12-14-70	2154-480
C-66	STUART MACDONALD		10-26-70	2143-263
67CC	JOSEPH POSIVAK		1-26-71	2163-261



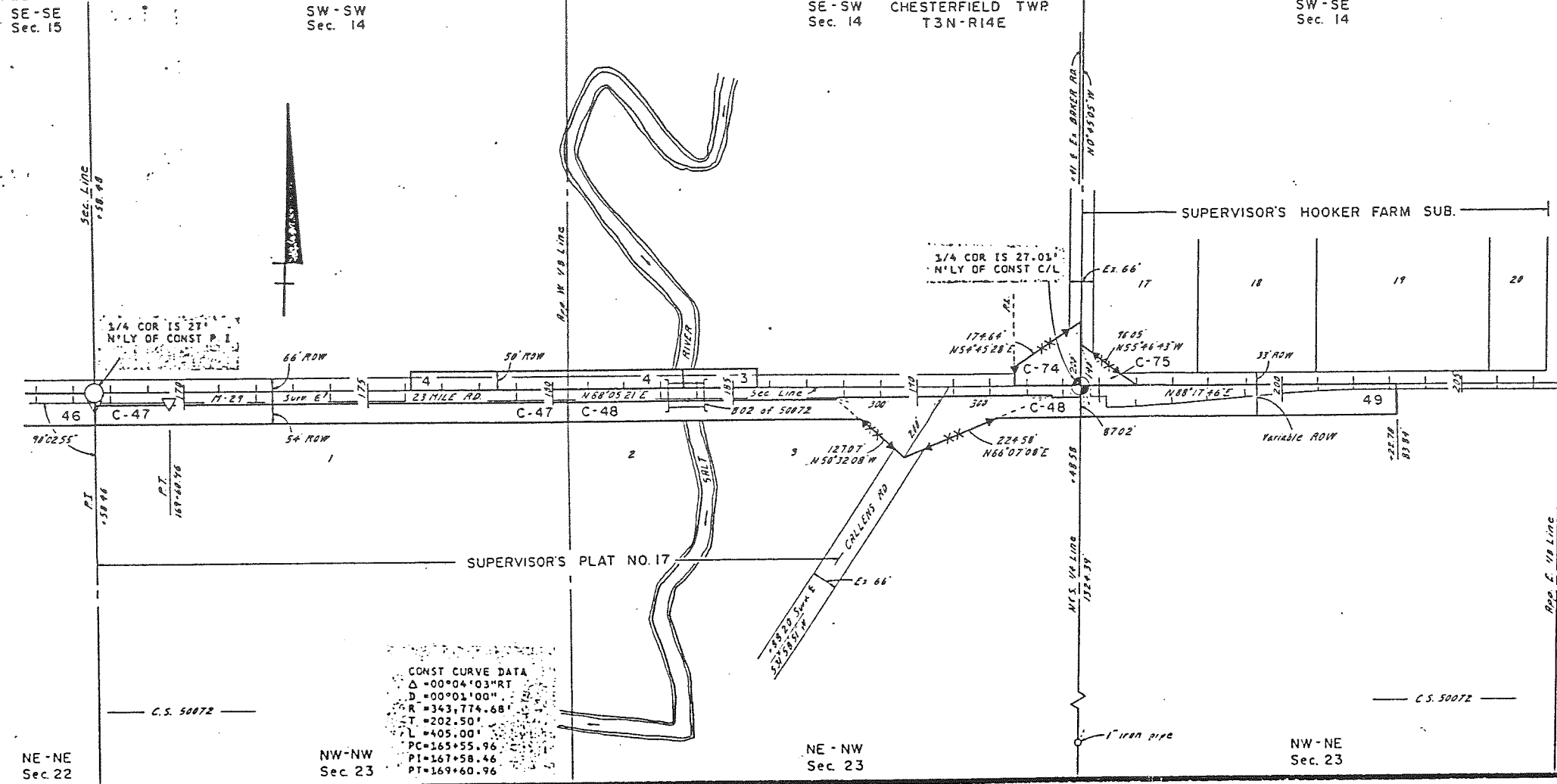
PARCEL	GRANTOR	INST. DATE	SALE NO.	ITEM
EXCESS SALES				
1A	MICHAEL G SIAJKOWSKI	D	12-18-74	M-308-A, 166A
1B	MACKS CO DRAIN COMM	E	12-21-73	M-242-E, 1
1C	RAYMOND M LEFEVER	D	8-14-74	M-296-N, 11A

CURVE DATA
CONST E
Δ = 1°17'15"RT
D = 0°12'00"
R = 28,647.89'
T = 324.32'
L = 648.63'
PC = 126+10.36
PI = 129+34.68
PT = 132+58.97

CONST CURVE DATA
Δ = 0°04'03"RT
D = 0°01'00"
R = 343,774.68'
T = 202.50'
L = 405.00'
PC = 165+55.96
PI = 167+58.46
PT = 169+60.96

RIGHT-OF-WAY MAP

DRAWN	REV	ROUTE	PROJECT	CONTROL SECTION	SHEET NO.
G GALINDALE	2-77				
J SPALLEY	1-81				
FILE NO.	50-R-2	17-29		50072	45

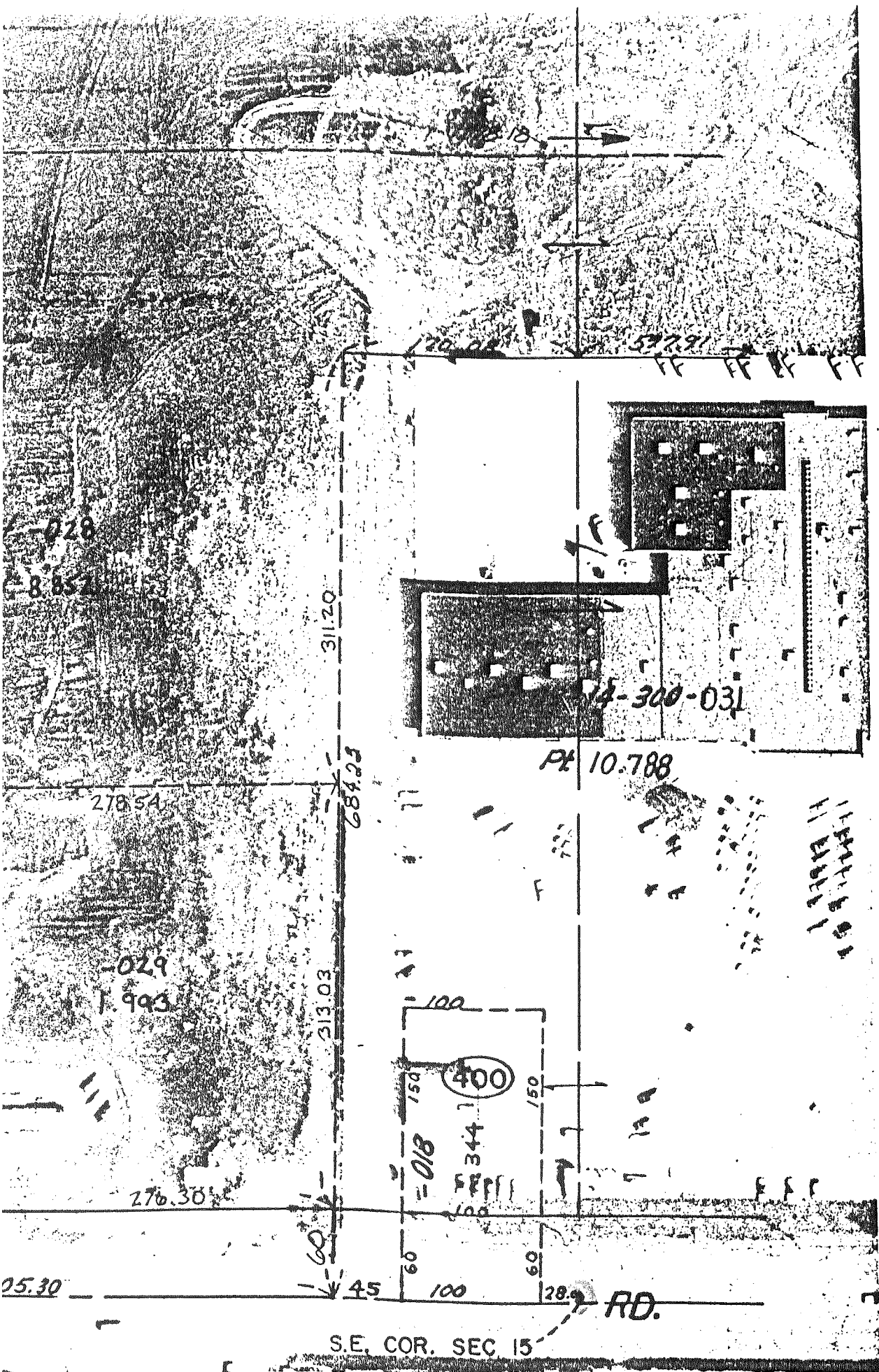


For ROW on
M-29 East
See sheer no. 160

CS 50072	PARCEL	GRANTOR	INST	DATE	REC	LIB	PG
46		F ROSS DIRKHILL	D	8-3-73		2208	398
C-47		ROBERT MANCINI	M	10-28-70		2143	713
C-48		ACHIEL COLPAERT	M	3-2-70		2094	423-22 LA
C-74		CHARLES HELMAN	M	8-22-69		2055	403 LA
C-75		MARY FOLTA	M	10-26-70		2143	256 LA
		FRANCES CANIAGO	M	5-8-70		2107	96 LA

PROJ 50-9	PARCEL	GRANTOR	INST	DATE	REC	LIB	PG
3		LILY R ATLOFF	E	7-22-38		370	43 COV
4		ANDREH KUK	E	7-22-38		370	43 COV

CONST CURVE DATA
 $\Delta = 00^{\circ}04'03''$ RT
 $D = 00^{\circ}01'00''$
 $R = 343,774.68'$
 $T = 202.50'$
 $L = 405.00'$
 $PC = 165+55.96$
 $PI = 167+58.46$
 $PT = 169+60.96$



LAND CORNER RECORDATION CERTIFICATE
Filing Requirement of Act 74, Mich. P.A. 1970

For corners in

Macomb

(County)

Chesterfield Township

Located In:

Corner Code ##

Table with 4 columns: Description, Township/Range/Section, Corner Code, and another description. Includes entries for Public Land Survey, Property Controlling in Section, and Miscellaneous Property in Sec.

Register of Deeds Stamp & File Number

- 4. Lot No. , Recorded Plat
5. Private Claims

I, Martin C. Dunn, in a field survey on June 19, 1989, do hereby certify that under requirements of P.A. 74, Michigan P.A. of 1970, the corner points mentioned in lines 1 and 2 above were in conformance with regulations and rules therefore as required in the current manual of survey instructions of the United States Department of the Interior, Bureau of Land Management or by a decree of a Court of Law and/or that the corner points mentioned in lines 3, 4 and 5 above were in conformance with the rules of the Michigan Board of Land Surveyors or by a Decree of a Court of Law, established, re-established, monumented, re-monumented, recovered, found as expressed below:

NOTE: Not more than 4 corners, all in the same town and range, may be recorded on this certificate.

A. Description of original monument and accessories and/or subsequent restoration:

B. Description of corner evidence found and/or method applied in restoring or reestablishing corner:

- I-7, SW Corner, Found 1/2" Iron Rod in Monument Box
J-7, S 1/4 Corner, Found 1/2" Iron Rod in Monument Box

C. Description of monument for corner and accessories established to perpetuate locating the position of the corner:

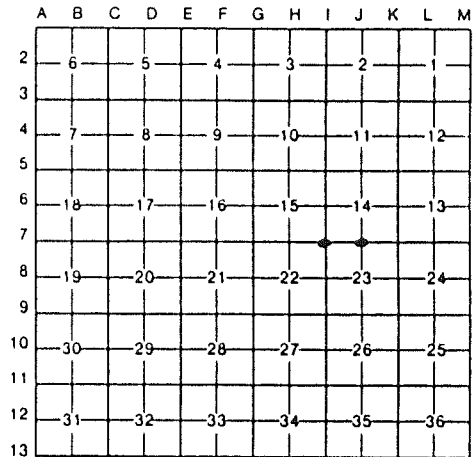
- I-7, SW Corner
1. N 10° W - 34.50, found Forming Nail in East face Utility Pole
2. N 45° E - 163.32, Found P.K. Nail in North face Utility Pole
3. N 60° W - 60.40, Set P.K. Nail in Curb Joint at Catch Basin
4. N 45° W - 79.66, Set 1/2" Iron Rod with traverse cap #30081 at M.B.T. Pedestal

- J-7, S 1/4 Corner
1. S 30° W - 66.60, Set 1/2" Iron Rod with traverse cap #30081
2. N 45° W - 80.45, Found P.K. Nail in South face Utility Pole
3. N 20° W - 103.62, Found P.K. Nail & MSHD washer in East face Utility Pole
4. N 60° E - 109.77, Found P.K. Nail & MSHD washer in South face Utility Pole

Signed by Martin C. Dunn

Date 7/21/89

Surveyor's Michigan License No. 30081



RECORDED IN MACOMB COUNTY
RECORDS AT: 9:44 A.M.

JUL 21 1989

Edna M. Hill

CLERK - REGISTER OF DEEDS
MACOMB COUNTY, MICHIGAN



LIBER 051580890

B598574

LAND CORNER RECORDATION CERTIFICATE
Filing Requirement of Act 74, Mich. P.A. 1970

RECORDED IN MACOMB COUNTY
RECORDS AT: 11:21A M.
JUL 25 1991

Edna M. ...
CLERK - REGISTER OF DEEDS
MACOMB COUNTY, MICHIGAN

Register of Deeds Stamp & File Number

For corners in

Macomb
(County)

Located In:

Corner Code #

- 1. Public Land Survey
T 3N R 14E I-7
T 3N R 14E J-7
T _____ R _____
T _____ R _____
- 2. Property Controlling
in Section S _____ T _____ R _____
S _____ T _____ R _____
- 3. Miscellaneous
Property in Sec. S _____ T _____ R _____
S _____ T _____ R _____
- 4. Lot No. _____, Recorded Plat _____
- 5. Private Claims _____

Frank J. DeDecker June 12 1991

I, _____, in a field survey on _____, 19____, do hereby certify that under requirements of P.A. 74, Michigan P.A. of 1970, the corner points mentioned in lines 1 and 2 above were in conformance with regulations and rules therefore as required in the current manual of survey instructions of the United States Department of the Interior, Bureau of Land Management or by a decree of a Court of Law and/or that the corner points mentioned in lines 3, 4 and 5 above were in conformance with the rules of the Michigan Board of Land Surveyors or by a Decree of a Court of Law, established, re-established, monumented, re-monumented, recovered, found as expressed below:

NOTE: Not more than 4 corners, all in the same town and range, may be recorded on this certificate.

A. Description of original monument and accessories and/or subsequent restoration:

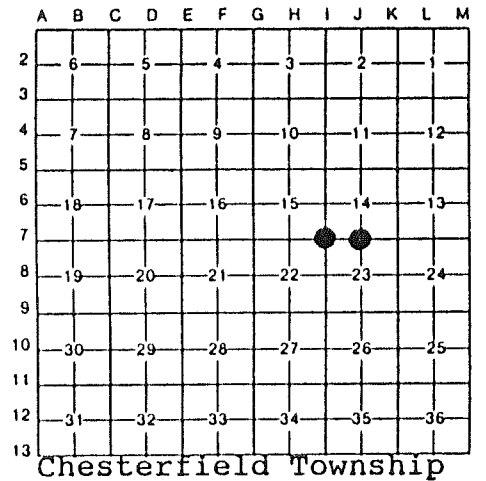
- 7 Found 1/2" Iron Rod in Monument Box
N.10°W., 34.50': Forming Nail in East Face U.P.
N.45°E., 163.32': PK Nail in North Face U.P.
N.60°W., 60.40': PK Nail in Curb Joint at Catch Basin
N.45°W., 79.66': 1/2" Iron Rod with Traverse Cap #30081 at MBT Pedestal
Recorded Corner Certificate L. 4687, P. 327 Macomb County Records
- 7 Found 1/2" Iron Rod in Monument Box
N.30°W., 66.60': 1/2" Iron Rod with Traverse Cap #30081
N.45°W., 80.45': PK Nail in South Face U.P.
N.20°W., 103.62': PK Nail w/MSHD Tag in East Face U.P.
N.60°E., 109.77': PK Nail w/MSHD Tag in South Face U.P.
Recorded Corner Certificate L. 4687, P. 327 Macomb County Records

B. Description of corner evidence found and/or method applied in restoring or reestablishing corner:

- 7 Found 1/2" Iron Rod in Monument Box approximately 17.6' south of northern Curb Line of 23 Mile Road
- 7 Found 1/2" Iron Rod in Monument Box approximately 5.5' south of northern curb line of 23 Mile Road

C. Description of monument for corner and accessories established to perpetuate locating the position of the corner:

- 7 SW corner Section 14, Found 1/2" Iron Rod in Monument Box
Az. 18°, 49.92': Cut "+" in North Rim of Sanitary MH
Az. 42°, 163.35': PK Nail in NW Face of U.P.
Az. 279°, 182.83': Cut "+" on Top of Fire Hydrant Centerline Nut
Az. 310°, 79.66': 1/2" Iron Rod with Traverse Cap #30081 at MBT Pedestal
Az. 348°, 34.45': Form Nail in East Face U.P.
- 7 South 1/4 Corner Section 14, Found 1/2" Iron Rod in Monument Box
Az. 54°, 60.70': Cut "+" in Center of MBT Manhole
Az. 177°, 84.50': PK Nail w/SDA Tag in East Face U.P.
Az. 215°, 86.80': Centerline Top Nut on Hydrant
Az. 295°, 80.77': PK Nail w/MSHD Tag in NE Face U.P.
Az. 343°, 103.53': PK Nail w/MSHD Tag in NE Face U.P.



Signed by *Frank J. DeDecker* Date 6-21-91

Surveyor's Michigan License No. 8386

