

LAND CORNER RECORDATION CERTIFICATE
Filing Requirement of Act 74, Mich. P.A. 1970

C152291
 94 DEC 14 AM 10:56
 CARMEL A. BAUGH
 REGISTER OF DEEDS
 MACOMB COUNTY, MI

or corners in

MACOMB
 (County)

Located In: CHESTERFIELD Corner Code # _____

Public Land Survey T 3N R 14E I-4
 T _____ R _____
 T _____ R _____
 T _____ R _____

Property Controlling _____
 in Section S _____ T _____ R _____
 S _____ T _____ R _____

Miscellaneous _____
 Property in Sec. S _____ T _____ R _____

Lot No. _____, Recorded Plat _____
 Private Claims _____

LIBER **6527** PAGE **868**

Register of Deeds Stamp & File Number

	A	B	C	D	E	F	G	H	I	J	K	L	M
2		6	5		4		3		2				
3													
4		7	8		9		10	●	11		12		
5													
6		18	17		16		15		14		13		
7													
8		19	20		21		22		23		24		
9													
10		30	29		28		27		26		25		
11													
12		31	32		33		34		35		36		
13													

STEVEN E. DUNN, in a field survey on APRIL 5, 1994,
 hereby certify that under requirements of P.A. 74, Michigan P.A. of 1970, the corner points
 mentioned in lines 1 and 2 above were in conformance with regulations and rules therefore
 required in the current manual of survey instructions of the United States Department of
 the Interior, Bureau of Land Management or by a decree of a Court of Law and /or that the
 corner points mentioned in lines 3, 4 and 5 above were in conformance with the rules of the
 Michigan Board of Land Surveyors or by a Decree of a Court of Law; established,
 re-established, monumented, re-monumented, recovered, found as expressed below:

NOTE: Not more than 4 corners, all in the same town and range, may be recorded on this certificate.

Description of original monument and accessories and/or subsequent restoration:

GLO POST - NO EVIDENCE OF ORIGINAL CORNER FOUND
GLO ORIGINAL SURVEY PERFORMED BY PRESTON 2-18-1818

<u>L.C.R.C.</u>	<u>NAME AND NUMBER</u>	<u>DESCRIPTION</u>	<u>DATE</u>
L.4687 P. 432	MARTIN C. DUNN, #30081	FOUND 1" IRON PIPE	JUNE 1, 1989

<u>CERTIFICATE OF SURVEY</u>			
NOT RECORDED	ROGER J. STECKER, #30103	FOUND 1" PIPE	JULY 11, 1991

Description of corner evidence found and/or method applied in restoring or reestablishing corner:

I-4 1/4 CORNER
FOUND 1" IRON PIPE IN OPEN FIELD. VERIFIED LOCATION BY COMPARING FOUND WITNESSES OF ABOVE CERTIFICATE OF SURVEY AND L.C.R.C.

FOUND WITNESS TIES
 L. 4687, P. 432 N.20°E. 8.97' PK. NAIL IN WEST FACE OF 12" OAK
 SOUTH 7.15' PK. NAIL IN EAST FACE OF 8" MAPLE
 S.30°W. 28.34' PK. NAIL IN EAST FACE OF 22" HICKORY

FIELD MEASUREMENTS AND RECORDED DISTANCES
 I-4 TO I-3 2681.39' (M.) 2640.00' G.L.O. (R.)
 I-4 TO I-5 2689.91' (M.) 2640.00' G.L.O. (R.)

Description of monument for corner and accessories established to perpetuate locating the position of the corner:

I-4 T.3N., R.14E. I REPLACED 1" IRON PIPE WITH 3/4" x 24" IRON ROD WITH 2" DIAMETER ALUMINUM CAP STAMPED "MACOMB COUNTY MONUMENT MI. ACT 345 #28408".

WITNESSES
 N.34°E. 8.97' FOUND PK IN WEST FACE OF 12" OAK.
 S.75°E. 18.16' FOUND PK IN EAST FACE OF 14" ASH
 S.07°E. 7.15' FOUND PK IN EAST FACE OF 8" MAPLE
 S.35°W. 28.34' FOUND PK IN EAST FACE OF 22" HICKORY

ACCEPTED BY THE MACOMB COUNTY SURVEY PEER GROUP AS THE OFFICIAL CORNER UNDER MICHIGAN PUBLIC ACT 345 OF 1990 AT A MEETING HELD ON 10-18-94
William E. Soderberg
WILLIAM E. SODERBERG, P.S., CHAIRMAN



THE SELECTED LOCATION IS ACCEPTED BY ME AND IS GENERALLY ACCEPTED BY PROFESSIONAL SURVEYORS AS THE BEST AVAILABLE EVIDENCE OF THE POSITION OF THE ORIGINAL CORNER.

Signed by Steven E. Dunn Date Nov. 9, 1994
 Surveyor's Michigan License No. 28408

Corner 3 North Range 14 East

75.70 To Creek corner S.E.

60.78 Intersected west boundary line at the
corner land level first in it and
past dry 2^d rate Timber W. Oak Poplar
B. Ash Birch & Undergrowth Acorn bear etc

East Cornered between S. 3 & 10

41.07 Set 1/4 section post at average distance
from which a Lynn 13 in diam
beare S 5 W 17 links dist also a B. Ash
14 ins diam beare S 58 E 21 links dist

40.78 To section corner

South Between Sections 10 & 11

28.59 a Birch 24 ins diam

40.00 Set half mile post from which a
Sugar Oak 7 in diam beare S 19
W 9 links dist also a Birch 10 ins diam
beare N 9 W 16 links dist

47.27 one Elm 30 in diam

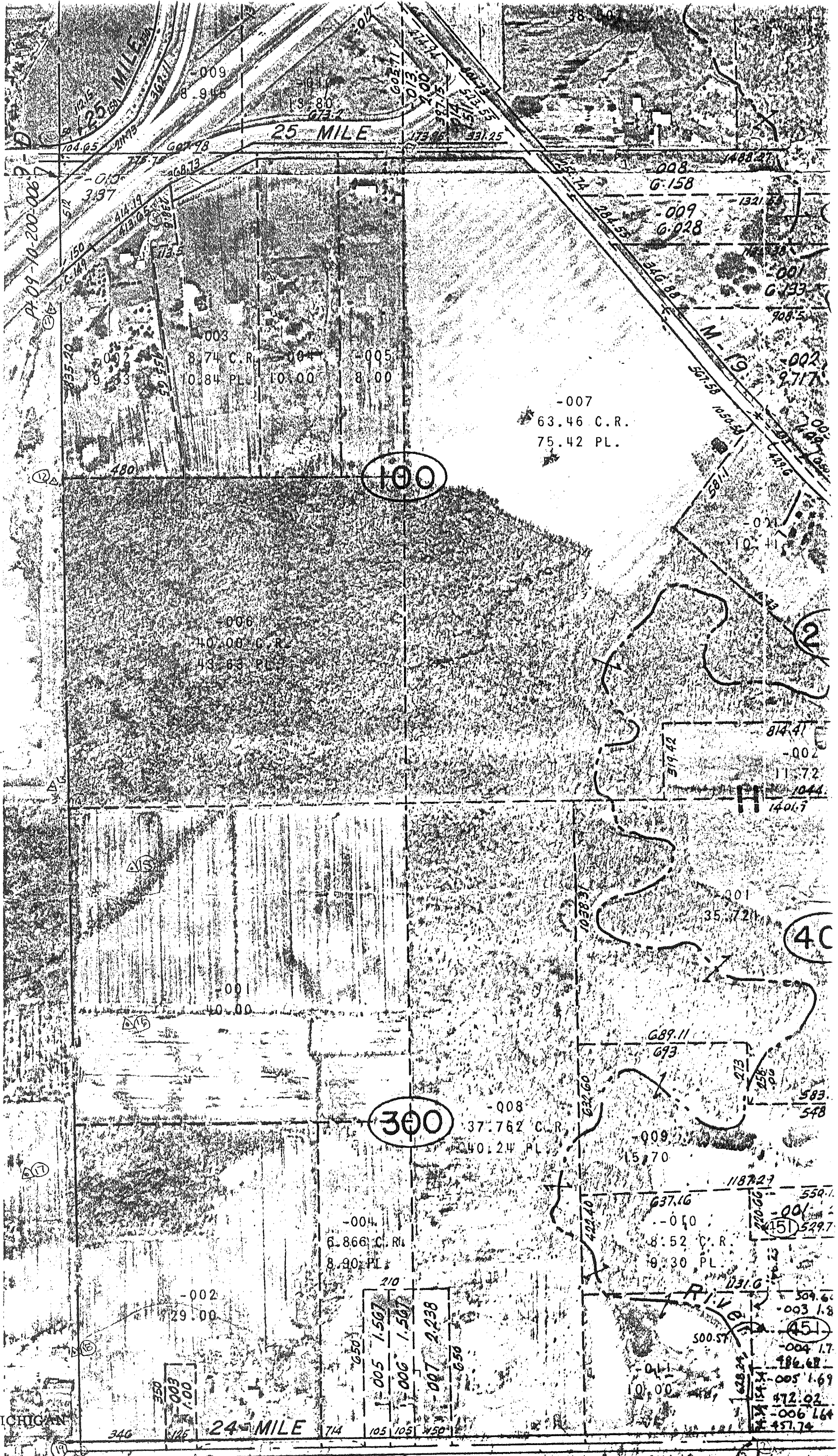
80.50 Set post for section 10, 11, 14, 15 from
which a Sugar 16 in diam beare N
5 W 19 links dist also a Birch 14 ins
diam beare S 77 E 21 links dist
1st half mile greatest part dry 2^d
rate. Last half mile same
Timber Birch Sugar W Oak Poplar
B. Ash & Undergrowth Horned

West On Roadway between S 10 & 15

40.50 Set temporary half mile post

63.61 a Creek 10 links corner S.E.

80.16 Intersected West boundary at the
corner land level past dry 2^d rate Timber
W. Oak Birch & Undergrowth Acorn bear etc



REV. 2-91
 REV. 5-89
 REV. 8-83
 REV. 5-82
 REV. 7-80
 REV. 2-77
 REV. 3-75

Copyright 1974
 MACOMB COUNTY, MICHIGAN

SCALE: 1" = 400'

9-E

NEW BALTIMORE & CHE
 SECS. 2 & 11 T.

LIBER 04687PG432

B376998

LAND CORNER RECORDATION CERTIFICATE

Filing Requirement of Act 74, Mich. P.A. 1970

RECORDED IN MACOMB COUNTY RECORDS AT: 10:23A.M.

JUL 21 1989

Edna H. Hill

CLERK - REGISTER OF DEEDS MACOMB COUNTY, MICHIGAN

Register of Deeds Stamp & File Number

For corners in Macomb County	Located In	Corner Code //
1 Public Land Survey	T 3N R 14E	I-4
	T 3N R 14E	J-4
	T 3N R 14E	K-4
	T R	
	S 11 T 3N R 14E	
2 Property Controlling in Section	S T R	
	S T R	
3 Miscellaneous Property in Sec	S T R	
	S T R	
4 Lot No.	Recorded Plat	
5 Private Claims		

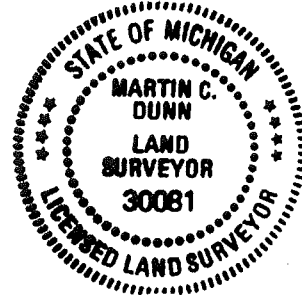
I, Martin C. Dunn, in a field survey on June 1, 1989 do hereby certify that under requirements of P.A. 74, Michigan P.A. of 1970, the corner points mentioned in lines 1 and 2 above were in conformance with regulations and rules therefore as required in the current manual of survey instructions of the United States Department of the Interior, Bureau of Land Management or by a decree of a Court of Law and/or that the corner points mentioned in lines 3, 4 and 5 above were in conformance with the rules of the Michigan Board of Land Surveyors or by a Decree of a Court of Law, established, re-established, monumented, re-monumented, recovered, found as expressed below.

NOTE: Not more than 4 corners, all in the same town and range, may be recorded on this certificate.

A. Description of original monument and accessories and/or subsequent restoration:

B. Description of corner evidence found and/or method applied in restoring or reestablishing corner:

- I-4, W 1/4 Corner Section 11, Found 1" Iron Pipe
- J-4, Center Post Section 11, Set 1/2" iron Rod with Cap #30081 at the intersection of opposite 1/4 Corners
- K-4, E 1/4 Corner Section 11, Found 1/2" Iron Rod

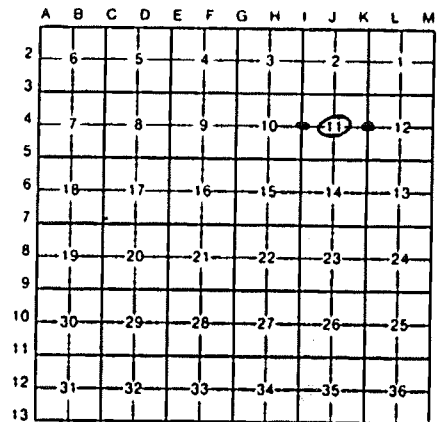


C. Description of monument for corner and accessories established to perpetuate locating the position of the corner:

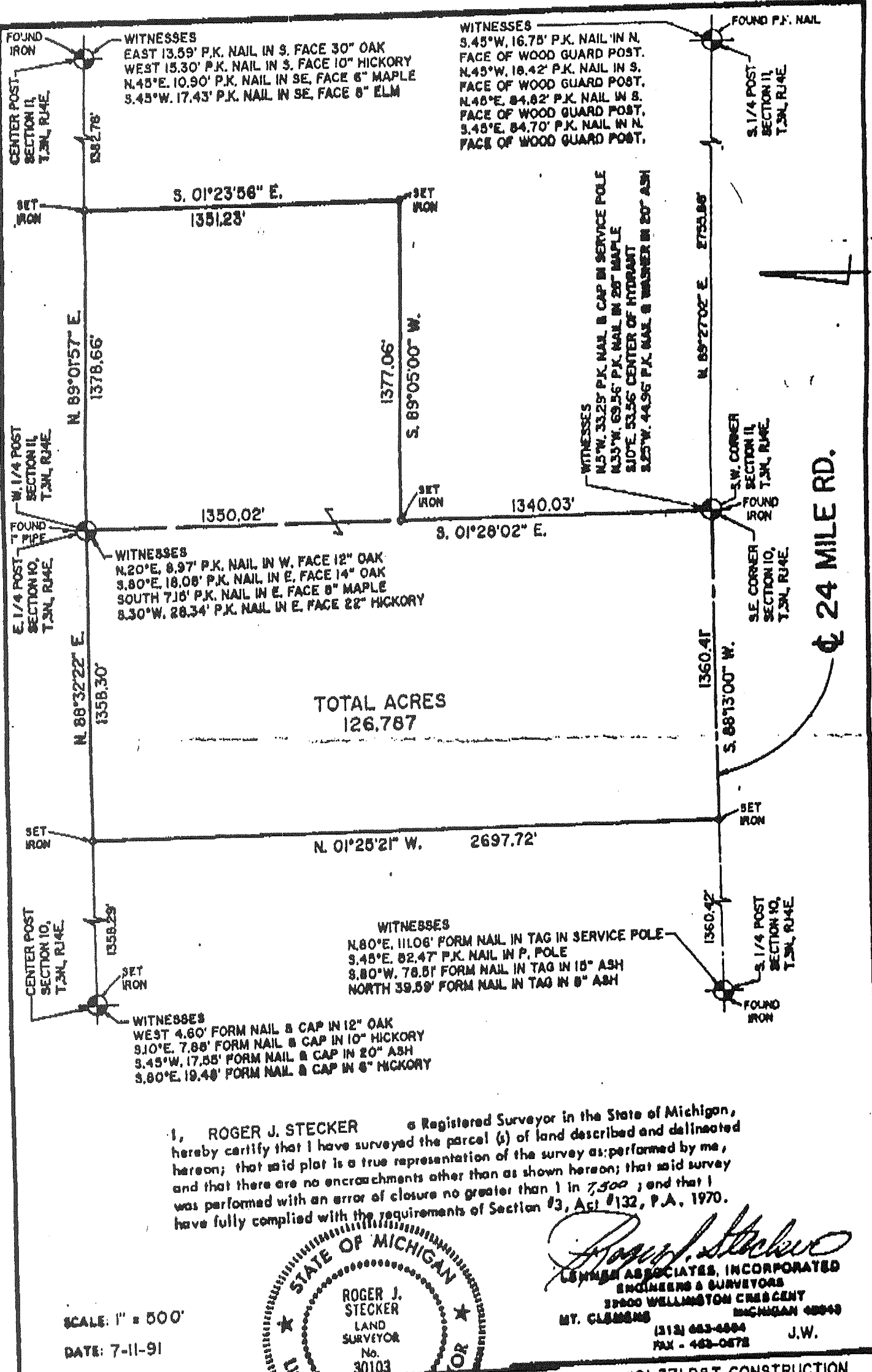
- | | |
|---|--|
| I-4, W 1/4 Corner | K-4, E 1/4 Corner |
| 1. N 20° E 8.97, Set P.K. Nail, W face 12" Oak | 1. West 1.45, Set P.K. Nail, S face 36" Oak |
| 2. S 80° E 18.08, Set P.K. Nail, E face 14" Oak | 2. South 8.28, Set P.K. Nail, NW face 36" Oak |
| 3. South 7.15, Set P.K. Nail, E face 8" Maple | 3. East 54.26, Set P.K. Nail, N face 40" Oak |
| 4. S 30° W 28.34, Set P.K. Nail, E face 22" Hickory | 4. S 30° E 39.50, Set P.K. Nail, W face 12" Poplar |
- J-4, Center Post
- 1. East 13.59, Set P.K. Nail, S face 30" Oak
 - 2. West 15.30, Set P.K. Nail, S face 10" Hickory
 - 3. N 45° E 10.90, Set P.K. Nail, SE face 6" Maple
 - 4. S 45° W 17.43, Set P.K. Nail, SE face 8" Elm

Signed by *Martin C. Dunn*
Surveyor's Michigan License No 30081

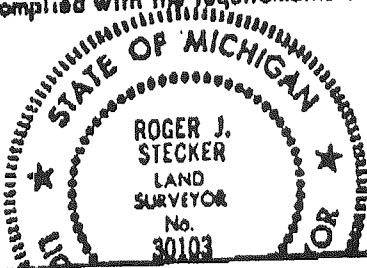
Date 7/21/89



CERTIFICATE of SURVEY



I, **ROGER J. STECKER** a Registered Surveyor in the State of Michigan, hereby certify that I have surveyed the parcel (s) of land described and delineated hereon; that said plot is a true representation of the survey as performed by me, and that there are no encroachments other than as shown hereon; that said survey was performed with an error of closure no greater than 1 in 7,500; and that I have fully complied with the requirements of Section #3, Act #132, P.A. 1970.



Roger J. Stecker
LEHNER ASSOCIATES, INCORPORATED
 ENGINEERS & SURVEYORS
 2300 WELLINGTON CRESCENT
 MT. CLEMENS MICHIGAN 48049
 (313) 683-4884 J.W.
 FAX - 483-0578

SCALE: 1" = 500'
 DATE: 7-11-91

#91-371 DBT CONSTRUCTION

Post-it™ brand fax transmittal memo 7671	# of pages = 1
From: <i>Boon Stecker</i>	To: <i>Marky Stecker</i>
Co.: <i>Lehner</i>	Co.: <i>Lehner</i>
Dept.: <i>463-4599</i>	Dept.: <i>463-4599</i>
Phone #	Phone #
Fax #	Fax #

I-4

APRIL 5, 1994

22-141 50 SHEETS
22-142 100 SHEETS
22-144 200 SHEETS

