

**LAND CORNER RECORDATION CERTIFICATE**  
**Filing Requirement of Act 74, Mich. P.A. 1970**

For corners in

**CHESTERFIELD TOWNSHIP**  
 Located In: Corner Code #

<u>MACOMB</u> (County)		
1. Public Land Survey	T <u>3N</u> R <u>14E</u>	<u>H-3</u>
	T _____ R _____	_____
	T _____ R _____	_____
	T _____ R _____	_____
2. Property Controlling in Section	S _____ T _____ R _____	_____
	S _____ T _____ R _____	_____
3. Miscellaneous Property in Sec.	S _____ T _____ R _____	_____
	S _____ T _____ R _____	_____
4. Lot No. _____, Recorded Plat _____		
5. Private Claims _____		

ACCEPTED BY THE MACOMB COUNTY SURVEY PEER BOARD AS THE OFFICIAL CORNER UNDER MICHIGAN ACT 345 OF 1990 AT A MEETING HELD ON \_\_\_\_\_ 2001. ROBERT H. BIRKETT, P.S., CHAIRMAN

1246430  
**LIBER 11091 PAGE 352**  
 12/13/2001 10:50:00 A.M.  
 MACOMB COUNTY, MI  
 CARMELLA SABAUGH, REGISTER OF DEED

Register of Deeds Stamp & File Number

I, ROBERT H. BIRKETT, in a field survey on JULY 10, 2001 do hereby certify that under requirements of P.A. 74, Michigan P.A. of 1970, the corner points mentioned in lines 1 and 2 above were in conformance with regulations and rules therefore as required in the current manual of survey instructions of the United States Department of the Interior, Bureau of Land Management or by a decree of a Court of Law and /or that the corner points mentioned in lines 3, 4 and 5 above were in conformance with the rules of the Michigan Board of Land Surveyors or by a Decree of a Court of Law; established, re-established, monumented, re-monumented, recovered, found as expressed below:

A	B	C	D	E	F	G	H	I	J	K	L	M
1												
2	6	5	4				3		2			1
3							●					
4	7	8	9				10		11			12
5												
6	18	17	16				15		14			13
7												
8	19	20	21				22		23			24
9												
10	30	29	28				27		26			25
11												
12	31	32	33				34		35			36
13												

**NOTE: Not more than 2 corners, all in the same town and range, may be recorded on this certificate.**

**A. Description of original monument and accessories and/or subsequent restoration:**

- H-3 1818, PRESTON, GLO, SET WOOD POST
- (a) 1971, H. KOBS # 14097, FOUND 1/2" IRON BAR, L.C.R.C., L. 2262, P. 638
- (b) 1989, H. KOBS # 14097, FOUND 1/2" IRON WITH CAP # 17635, L.C.R.C., L. 4729, P. 130

**B. Description of corner evidence found and/or method applied in restoring or reestablishing corner:**

- H-3 FOUND 1/2" IRON CENTER OF GRAVEL 25 MILE ROAD, 0.9' BELOW SURFACE
- WITNESSES FROM (a) and (b) ABOVE WERE USED TO RECOVER THIS CORNER



**FIELD MEASUREMENTS**

H-3 TO H-2 NO GLO MEASUREMENT NO RECORD MEASUREMENT 2001, REMON - 2698.06'	H-3 TO I-3 1818, GLO - 2645.94' (40.09 CH.) NO RECORD MEASUREMENT 2001, REMON - 2720.49'	H-3 TO G-3 1818, GLO - 2645.94' (40.09 CH.) 1971, H. KOBS - 2726.50' 1996, AEW - 2726.63' 2001, REMON - 2726.52'
-------------------------------------------------------------------------------------	---------------------------------------------------------------------------------------------------	------------------------------------------------------------------------------------------------------------------------------

**C. Description of monument for corner and accessories established to perpetuate locating the position of the corner:**

- H-3 REPLACED 1/2" IRON WITH 3/4" RE-BAR CAPPED WITH AN ALUMINUM CAP STAMPED "MACOMB COUNTY MONUMENT, MI ACT 345, H-3, 41094."
- AZ. 70° 110.42' SET REMON TAG IN THE SOUTH FACE OF A TWIN 9" ASH
- AZ. 200° 35.77' SET CHISELED "X" ON THE SOUTHEAST RIM OF A MANHOLE
- AZ. 275° 104.08' SET REMON TAG AT THE SOUND AND SCAR IN THE SOUTH FACE OF A 12" MAPLE
- AZ. 305° 37.79' SET REMON TAG AT THE SOUND AND SCAR IN THE SOUTH FACE OF A TWIN 16" MAPLE

THE SELECTED LOCATION IS ACCEPTED BY ME AND IS GENERALLY ACCEPTED BY PROFESSIONAL SURVEYORS AS THE BEST AVAILABLE EVIDENCE OF THE POSITION OF THE ORIGINAL CORNER.

Signed by Robert H. Birkett Date 10-16-01  
 Surveyor's Michigan License No. 41094

1204

LAND CORNER RECORDATION CERTIFICATE
Filing Requirement of Act 74, Mich. P.A. 1970

For corners in

Macomb County

Located In: Chesterfield twp. Corner Code #

RECORDED IN MACOMB COUNTY RECORDS AT: 10:57A M.

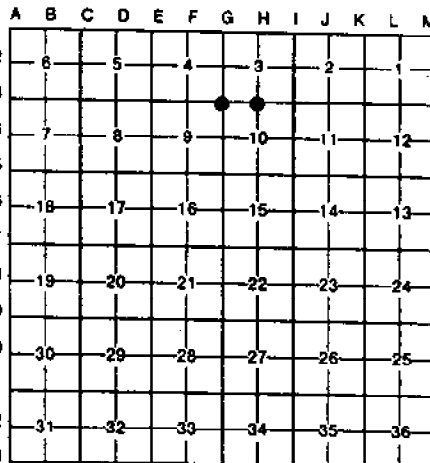
SEP 22 1989

Handwritten signature of Edna M. ...

CLERK - REGISTER OF DEEDS MACOMB COUNTY, MICHIGAN

Register of Deeds Stamp & File Number

Table with 5 rows and 4 columns: Survey Type, Section, Township, Range, Corner Code. Includes entries for Public Land Survey, Property Controlling in Section, and Miscellaneous Property in Sec.



I, HERBERT J. KOBBS, in a field survey on MARCH 30, 19 89, do hereby certify that under requirements of P.A. 74, Michigan P.A. of 1970, the corner points mentioned in lines 1 and 2 above were in conformance with regulations and rules therefore as required in the current manual of survey instructions of the United States Department of the Interior, Bureau of Land Management or by a decree of a Court of Law and/or that the corner points mentioned in lines 3, 4 and 5 above were in conformance with the rules of the Michigan Board of Land Surveyors or by a Decree of a Court of Law; established, re-established, monumented, re-monumented, recovered, found as expressed below:

NOTE: Not more than 4 corners, all in the same town and range, may be recorded on this certificate.

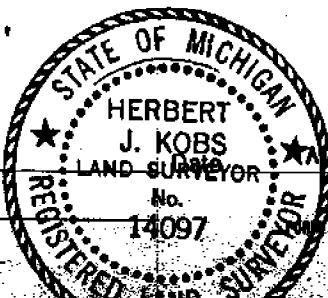
A. Description of original monument and accessories and/or subsequent restoration:

B. Description of corner evidence found and/or method applied in restoring or reestablishing corner:
(G-3) found 1/2" iron
(H-3) found 1/2" iron with cap #17635

C. Description of monument for corner and accessories established to perpetuate locating the position of the corner:

- (G-3) 1/2" iron
p.k. nail in 6" twin ash-NORTH-30.09'
chisled "+" on N.W. rim of manhole-S.E.-43.55'
form nail in 10" ash-S.S.W.-34.90'
form nail & washer in power pole-N.W.-127.18'
p.k. nail in 8" pine-N.W.-65.17'
(H-3) 1/2" iron w/cap #17635
nail & washer in fence post-N.E.-31.68'
p.k. nail in 4"x4" wood post-S.W.-54.91'
p.k. nail in 10" maple-N.W.-104.25'
p.k. nail in 12" twin maple-N.W.-37.86'

Signed by HERBERT J. KOBBS
Surveyor's Michigan License No. 14097



AUGUST 24, 1989

# LAND CORNER RECORDATION CERTIFICATE

FILING REQUIREMENT OF ACT 74, MICH. P.A. 1970

LIBER 2262 PAGE 638

A106237

FOR CORNERS OF--	LOCATED IN--	CORNER CODE NUMBER
1. PUBLIC LAND SURVEY _____	T. <u>3</u> N. <u>X</u> R. <u>14</u> E. <u>X</u>	H-3
2. PROPERTY CONTROLLING IN SECTION _____	T. _____ N. _____ S. _____ R. _____ E. _____ W. _____	_____
3. MISCELLANEOUS PROPERTY IN SECTION _____	T. _____ N. _____ S. _____ R. _____ E. _____ W. _____	_____
4. LOT NO. _____, RECORDED PLAT _____		
5. PRIVATE CLAIMS _____		

RECORDED IN MACOMB COUNTY  
RECORDS AT: 9:00 A.M.  
FEB 10 1972

*Edna M. Hill*  
CLERK - REGISTER OF DEEDS  
MACOMB COUNTY, MICHIGAN  
REGISTER OF DEEDS STAMP AND  
FILING NUMBER

I, Herbert J. Kobs do hereby certify that under requirements of P.A. 74, Michigan P.A. of 1970, the corner points mentioned in lines 1 and 2 above (identified with circles on index code diagram - over) were, in a field survey on September 23, 1971, established, re-established, monumented, re-monumented, recovered or restored as expressed below and in conformance with regulations and rules therefore as required in the current manual of survey instructions of the United States Department of the Interior, Bureau of Land Management or by a decree of a court of law. Furthermore, that the corner points mentioned in lines 3, 4 and 5 above were, in a field survey on \_\_\_\_\_ 19\_\_\_\_, found, recovered, restored, established or re-established as expressed below and in conformance with the rules of the Michigan State Board of Registration for Land Surveyors or, by a Decree of a Court of law:

A. Description of original monument and accessories and/or subsequent restoration:

B. Description of corner evidence found and/or method applied in restoring or re-establishing corner:

Found 1/2" iron bar

C. Description of monument for corner and accessories established to perpetuate locating the position of the corner:

1/2" iron bar  
Nail & washer in 5" twin maple - North 45 degrees West - 38.50 feet.  
Nail & washer in wood fence post - North 30 degrees East - 31.51 feet.  
Nail & washer in wood gate post - South 45 degrees West - 36.10 feet.

SIGNED BY *Herbert J. Kobs*  
Herbert J. Kobs

DATE October 22, 1971

SURVEYOR'S MICHIGAN REGISTRATION NO. 14097

FOR STATE AND UNITED STATES AGENCIES:

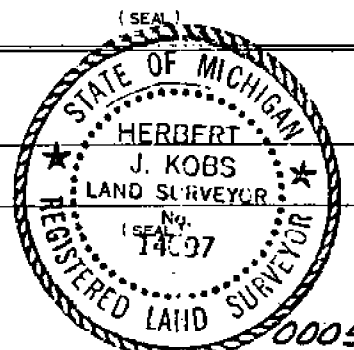
SIGNED BY \_\_\_\_\_ CHIEF OF SURVEY PARTY

DATE \_\_\_\_\_

APPROVED AND SIGNED BY \_\_\_\_\_ MICHIGAN REGISTERED LAND SURVEYOR

DATE \_\_\_\_\_

SURVEYOR'S MICHIGAN REGISTRATION NO. \_\_\_\_\_



223-021

2001 MAROMB REMON

7-10-01

RHS, BMS

CHESTERFIELD

A-3

No 1937 12

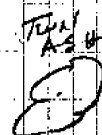
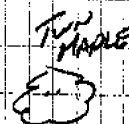
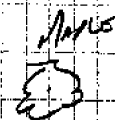
FOUND 1/2" IRON CENTER GRAVEL  
25 MILE ROAD 0.9' BELOW SURFACE

70° 110.42 SET REMON TAG IN  
S. FACE <sup>TWIN</sup> 9" ASH

200° 35.77 SET CH. '4' ON  
SOUTH EAST RIM M.H.

275° 104.08' SET REMON TAG AT  
SOUND & SCALE IN S. FACE 12" MAPLE

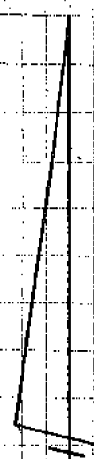
305° 37.79' SET REMON TAG AT  
SOUND & SCALE IN S. FACE TWIN  
16" MAPLE



25 (GRAVEL)



MILE



**LCRC**

1971, H. Kobs No. 14097, Found ½" iron, L 2262, P 638.

- NE - 31.51' - Nail w/tag in wood fence post.
- SW - 36.10' - Nail w/tag in wood gate post.
- NW - 38.50' - Nail w/tag in twin 5" Maple.

1989, H. Kobs No. 14097, Found ½" iron No. 17635, L4729, P 130.

- NE - 31.68' - Nail w/tag in fence post.
- SW - 54.91' - PK in 4" x 4" wood post.
- NW - 104.25 - PK in 10" Maple.
- NW - 37.86' - PK in twin 12" Maple.