

**LAND CORNER RECORDATION CERTIFICATE**  
**Filing Requirement of Act 74, Mich. P.A. 1970**

For corners in

**CHESTERFIELD TOWNSHIP**  
 Located In: Corner Code #

MACOMB  
 (County)

- |                                    |               |                             |             |
|------------------------------------|---------------|-----------------------------|-------------|
| 1. Public Land Survey              |               | <u>T 3 N R 14 E</u>         | <u>H-1</u>  |
|                                    |               | T <u>    </u> R <u>    </u> | <u>    </u> |
|                                    |               | T <u>    </u> R <u>    </u> | <u>    </u> |
|                                    |               | T <u>    </u> R <u>    </u> | <u>    </u> |
| 2. Property Controlling in Section | S <u>    </u> | T <u>    </u> R <u>    </u> | <u>    </u> |
|                                    | S <u>    </u> | T <u>    </u> R <u>    </u> | <u>    </u> |
| 3. Miscellaneous Property in Sec.  | S <u>    </u> | T <u>    </u> R <u>    </u> | <u>    </u> |
|                                    | S <u>    </u> | T <u>    </u> R <u>    </u> | <u>    </u> |

4. Lot No. \_\_\_\_\_, Recorded Plat \_\_\_\_\_  
 5. Private Claims \_\_\_\_\_

ACCEPTED BY THE MACOMB COUNTY SURVEY PEER GROUP AS THE OFFICIAL CORNER UNDER MICHIGAN PUBLIC ACT 345 OF 1980 AT A MEETING HELD ON 9/26/00  
*William E. Soderberg*  
 WILLIAM E. SODERBERG, P.S., CHAIRMAN

189063  
 LIBER 9884 PAGE 967  
 11/17/2000 12:40:42 P.M.  
 MACOMB COUNTY, MI  
 DANIELLA SABAUGH, REG/DEEDS

Register of Deeds Stamp & File Number

I, ROBERT H. BIRKETT, in a field survey on FEBRUARY 23, 2000 do hereby certify that under requirements of P.A. 74, Michigan P.A. of 1970, the corner points mentioned in lines 1 and 2 above were in conformance with regulations and rules therefore as required in the current manual of survey instructions of the United States Department of the Interior, Bureau of Land Management or by a decree of a Court of Law and /or that the corner points mentioned in lines 3, 4 and 5 above were in conformance with the rules of the Michigan Board of Land Surveyors or by a Decree of a Court of Law; established, re-established, monumented, re-monumented, recovered, found as expressed below:

**NOTE: Not more than 2 corners, all in the same town and range, may be recorded on this certificate.**

1	A	B	C	D	E	F	G	H	I	J	K	L	M
2		6		5		4		3		2		1	
3													
4		7		8		9		10		11		12	
5													
6		18		17		16		15		14		13	
7													
8		19		20		21		22		23		24	
9													
10		30		29		28		27		26		25	
11													
12		31		32		33		34		35		36	
13													

A. Description of original monument and accessories and/or subsequent restoration:  
 H-1, 1817, G. L. O., PRESTON D.S., SET POST  
 (a) 1978, K. THOMPSON # 16054, FOUND PK NAIL, L.C.R.C., L. 2938, P. 635  
 (b) 1963, MICHIGAN DEPARTMENT OF TRANSPORTATION, MONUMENT, FILE No. 50-R-2, CONTROL No. 50092, SHEET 145

B. Description of corner evidence found and/or method applied in restoring or reestablishing corner:  
 H-1, FOUND P.K. NAIL AT INTERSECTION OF NEW HAVEN ROAD (M-19) AND 26 MILE ROAD.  
 SW - 113.24 (a) - P.K. NAIL IN POWER POLE.

**FIELD MEASUREMENTS**  
 G-1 TO H-1  
 1817 G. L. O. 40 CHAINS (2640')  
 REMON (2000) 2743.51'  
 H-1 to I-1  
 1817 G. L. O. 40 CHAINS (2640')  
 REMON (2000) 2695.55'

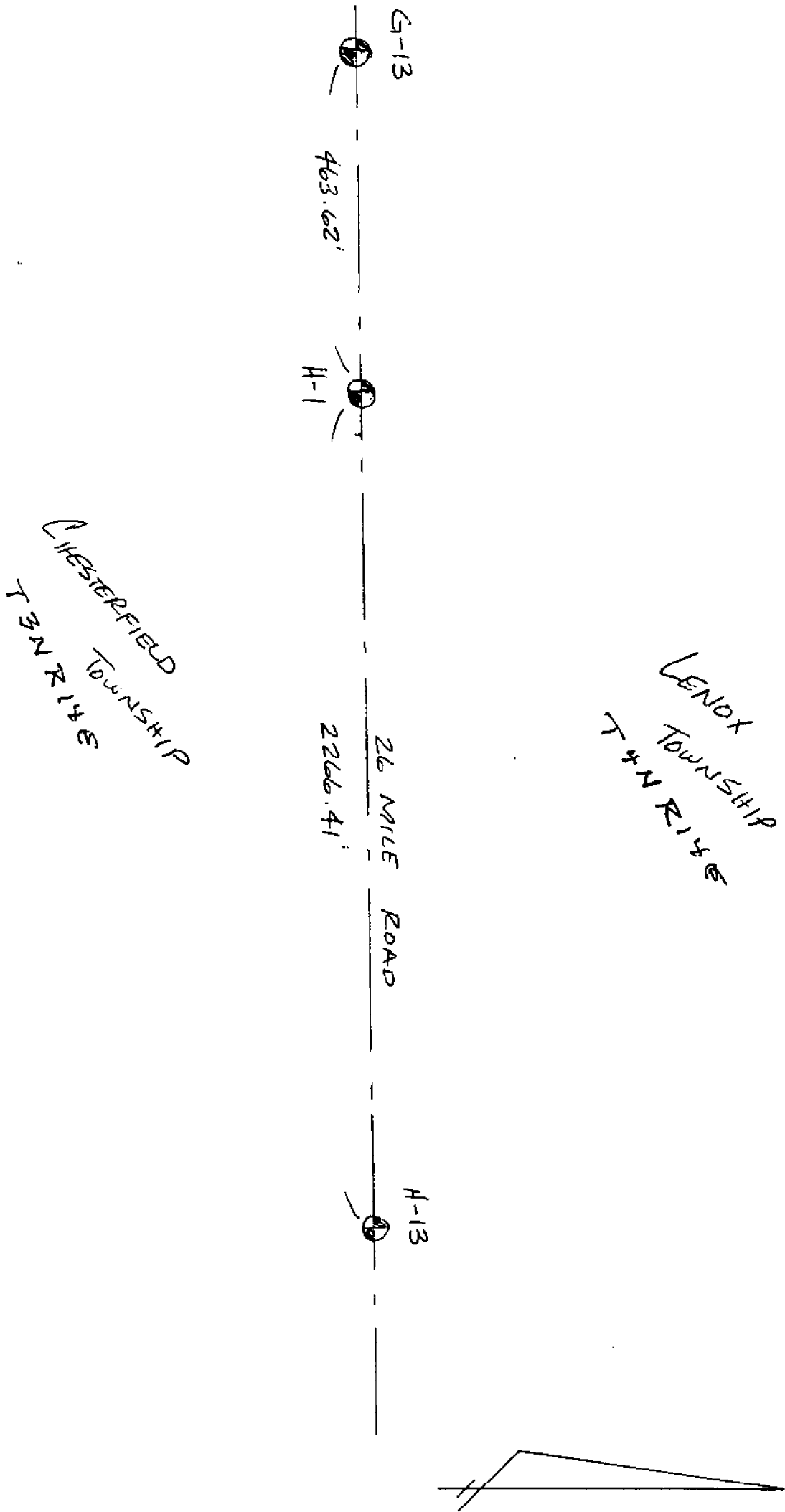


C. Description of monument for corner and accessories established to perpetuate locating the position of the corner:  
 H-1, REPLACED P.K. NAIL WITH A 3/4" x 24" RE-BAR CAPPED WITH AN ALUMINUM CAP STAMPED "MACOMB COUNTY MONUMENT, MI ACT 345, H-1, 41094" IN A NEW MONUMENT BOX, ON LINE BETWEEN G-13 AND H-13, TOWN 4 NORTH, RANGE 14 EAST, LENOX TOWNSHIP, MACOMB COUNTY.

- AZ. 30° 63.56' SET REMON TAG IN THE NORTHWEST FACE OF A UTILITY POLE.
- AZ. 80° 166.16' SET CHISELED "X" ON THE NORTH BOLT OF A SANITARY MANHOLE.
- AZ. 180° 113.11' SET REMON TAG ABOVE FOUND PK NAIL IN THE SW FACE OF A UTILITY POLE WITH A TRANSFORMER.
- AZ. 280° 129.50' SET REMON TAG IN SOUTH FACE UTILITY POLE.
- AZ. 270° 463.62' G-13, TOWN 4 NORTH, RANGE 14 EAST, LENOX TOWNSHIP.

THE SELECTED LOCATION IS ACCEPTED BY ME AND IS GENERALLY ACCEPTED BY PROFESSIONAL SURVEYORS AS THE BEST AVAILABLE EVIDENCE OF THE POSITION OF THE ORIGINAL CORNER.

Signed by *Robert H. Birkett* Date 11-01-00  
 Surveyor's Michigan License No. 41094



223-020  
2-23-2000  
EHB, BMS

H-1  
CHESTERFIELD  
T.3 N., R.14E

FOUND P.K. NAIL @ INTERSECTION (M-19)  
NEW HAVEN ROAD AND 26 MILE RD.

30° 63.56' SET REMON TAG IN  
N.W. FACE U.P.

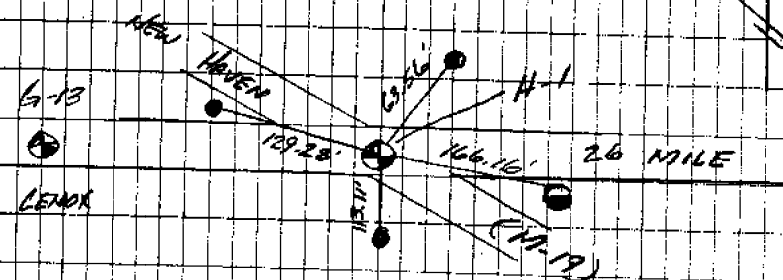
80° 166.16' SET 24" X" ON  
N. BOLT SAN. M.H.

180° 113.11' SET REMON TAG ABOVE  
FD. P.K. NAIL IN S.W. FACE  
U.P. W/ TRANSFORMER

292° 129.22' FD. MDOT REFERENCE  
TAG S. FACE U.P.

No 1815

5



223-020  
2-23-2000  
RMB, BMS

H-1

CHESTERFIELD

No 1815

6

POINT*	HOR. AZ.	DIST	REMARK
--------	----------	------	--------

TC2001 → 2002

(COMPARE)

2001A	223-00-00	46.61	H-1 FD. P.K. NAIL
-------	-----------	-------	----------------------

2001B	355-14-00	22.05'	28° 63.56'
-------	-----------	--------	------------

SET NAIL w/ REMON TAG IN N.W. FACE V.P.

2001C	92-18-00	131.97'	80° 166.16'
-------	----------	---------	-------------

CH. X ON NORTH BOLT SAN. M.H.

2001D	191-14-00	150.04	179° 113.11'
-------	-----------	--------	--------------

SET REMON TAG ABOVE FD P.K. NAIL ON  
S.W. FACE V.P. w/ TRANS

2001E	267-28-30	158.34	282° 129.28'
-------	-----------	--------	--------------

FD. MDOT REF TAG IN S. FACE V.P.

2001	IRON. w/ TRAN CAP N.E. COR 26 MI & M-14		
0° - 22'	- V.P.		
315° - 40'	- GAS TEST STATION		

