

LIBER 06165 PC 971

B999604

LAND CORNER RECORDATION CERTIFICATE
Filing Requirement of Act 74, Mich. P.A. 1970

For corners in

Macomb (County)

Located In: Chesterfield Corner Code #F

RECORDED IN MACOMB COUNTY RECORDS AT 8:30 A.M.

DEC 28 1993

Register of Deeds Stamp & File Number

- 1. Public Land Survey T 3 N R 14 E F-5
2. Property Controlling in Section S T R
3. Miscellaneous Property in Sec. S T R
4. Lot No. Recorded Plat
5. Private Claims

I, Steven E. Dunn, in a field survey on December 7, 1993, do hereby certify that under requirements of P.A. 74, Michigan P.A. of 1970, the corner points mentioned in lines 1 and 2 above were in conformance with regulations and rules therefore as required in the current manual of survey instructions of the United States Department of the Interior, Bureau of Land Management or by a decree of a Court of Law and/or that the corner points mentioned in lines 3, 4 and 5 above were in conformance with the rules of the Michigan Board of Land Surveyors or by a Decree of a Court of Law; established, re-established, monumented, re-monumented, recovered, found as expressed below:

Grid table with columns A-M and rows 2-13. A dot is marked at the intersection of column F and row 5.

NOTE: Not more than 4 corners, all in the same town and range, may be recorded on this certificate.

A. Description of original monument and accessories and/or subsequent restoration:

GLO Post - No evidence of original corner found.

GLO Original survey performed by Preston 2-18-1818.

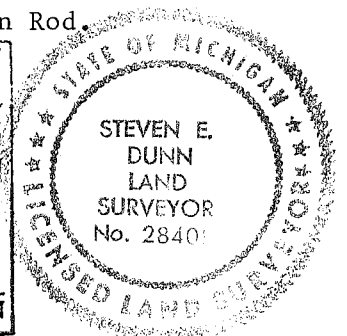
L.C.R.C.: L.4055, P.670 Donald H. King #30085 October 27, 1986
L.5290, P.287 Warren C. Avey #30076 January 6, 1992

B. Description of corner evidence found and/or method applied in restoring or reestablishing corner:

F-5 Found 1/2" Iron Rod in monument box. Found corner matches description and found witnesses of above L.C.R.C.'s.

Replaced with Macomb County Monument Marker #28408 on 3/4" X 24" Iron Rod.

ACCEPTED BY THE MACOMB COUNTY SURVEY PEER GROUP AS THE OFFICIAL CORNER UNDER MICHIGAN PUBLIC ACT 345 OF 1990 AT A MEETING HELD ON 12-15-93. FRANK J. DoDECKER, PS, PE, CHAIRMAN



C. Description of monument for corner and accessories established to perpetuate locating the position of the corner:

F-5 T.3N.,R.14E.

Macomb County Monument Marker #28408 on 3/4" X 24" Iron Rod in monument box.

Witnesses:

- N.01°W. - 32.95' Found 1/2" Iron Rod w/cap #30092
N.09°W. - 33.45' Found PK nail on East face utility pole. Replaced with PK nail and Macomb County witness tag.
N.50°E. - 45.85' Found scribed "+" on SW rim of gate well.
S.05°W. - 28.45' Found PK nail West face utility pole.
N.09°E. - 45.43' Found PK nail west face 29" maple.

The selected location is a careful and faithful perpetuation of the position of the original corner.

Signed by Steven E. Dunn Date 12-20-93

Surveyor's Michigan License No. 28408

Run 3 North Range 14 East

West On Roundover between S 4 & 7

110.00 Set temporary half mile post

80.16 Intersected West boundary 7 links North
of corner Land level and dry good
2nd rate Timber W Oak, Beech Sugar
Lynn + Undergrowth Spice &

East Corrected between S 4 & 7

110.08 Made 74 Section corner on a B. Oak
10 in diam at average dist and on
true line

80.16 To Section corner.

South Between Sections 9 & 10

28.10 a Lynn 12 ins diam

110.00 Made half mile corner on an Ironwood
6 ins

112.71 an Elm 16 ins diam

80.00 Set post for corner of sects 7, 10, 15, 16
from which a B. Oak 7 in diam bears
N 45 E 9 links dist also a B. Oak 16
ins diam bears S 40 E 7 links dist
1st half mile level and dry good
2nd rate last half mile part dry 2nd
rate Timber W Oak, Beech Sugar, B. Oak
Elm Lynn + Undergrowth Ironwood
Spice &

West On Roundover between 9, 16

110.00 Set temporary half mile post

73.72 a Run 4 links wide S. East

80.14 Intersected West boundary 30 links
North of corner Land level part dry
2nd rate Timber W Oak Beech Maple
B. Oak Elm + Undergrowth Ironwood
Spice &

Town 3 North Range 11 East

East Corner between 7.16

110.17 Made 1/4 Section corner on a Sugar tree
10 ins diam at average distance on
tree line80.14 To Section corner

South Between Sections 16 + 15

16.32 on Elm 36 ins diam

40.00 Set half mile post from which
a Beech 18 ins diam bears S107 N 22. E 1/2
dist also a Beech 7 in diam bears S 58 E
9 links dist

114.80 on Elm 18 ins diam

20.00 Set post for sections 16.15.21.22 from
which a B. Oak 12 ins diam bears
North 31 links cl. also a B. Oak 13 ins
diam bears S 30 W 32 links dist
1st half mile level and wet 2nd rate
last half mile very wet 3rd rate
Timber B. Oak Beech Spruce Elm +
Undergrowth Cornbeam +

South Between Sections 21 + 22

7.92 a B. Oak 16 ins diam

24.63 Indissected Private Claim No 192

27.00 S.E. from the northerly corner
thereof

Made corner for fractional sections

21 + 22 on a Beech 1 in diam

Land very wet 2nd rate Timber Birch
Beech B. Oak Elm + Undergrowth Cornbeam

West One Random between 16 + 21

110.00 Set temporary half mile post

64.57 Run 15 links course S.E.

LAND CORNER RECORDATION CERTIFICATE

FILING REQUIREMENT OF ACT 74, MICH. P.A.1970

LIBER 4055 PAGE 670

| FOR CORNERS OF—: | LOCATED IN—: | CORNER CODE NUMBER |
|--|--|--------------------------|
| 1. PUBLIC LAND SURVEY _____ | T. <u>3</u> N. <u>X</u> R. <u>14</u> E. <u>X</u> | <u>(F-5), (G-5)</u> |
| 2. PROPERTY CONTROLLING IN SECTION <u>16</u> | T. <u>3</u> N. <u>X</u> R. <u>14</u> E. <u>X</u> | <u>Chesterfield Twp.</u> |
| 3. MISCELLANEOUS PROPERTY IN SECTION _____ | T. _____ N. _____ R. _____ E. _____ | _____ |
| 4. LOT NO. _____, RECORDED PLAT _____ | _____ | _____ |
| 5. PRIVATE CLAIMS _____ | _____ | _____ |

BC78769

RECORDED IN MACOMB COUNTY
RECORDS AT: 8:40 a. M.
OCT 27 1986

Edna Hubert

CLERK - REGISTER OF DEEDS
MACOMB COUNTY, MICHIGAN
REGISTER OF DEEDS STAMP AND
FILING NUMBER

I, Donald H. King, do hereby certify that under requirements of P.A. 74, Michigan P.A. of 1970, the corner points mentioned in lines 1 and 2 above were, in a field survey on Nov. 7, 1985, established, re-established, monumented, re-monumented, recovered or restored as expressed below and in conformance with regulations and rules therefore as required in the current manual of survey instructions of the United States Department of the Interior, Bureau of Land Management or by a decree of a court of law. Furthermore, that the corner points mentioned in lines 3, 4 and 5 above were, in a field survey on _____, 19____, found, recovered, restored, established or re-established as expressed below and in conformance with the rules of the Michigan State Board of Registration for Land Surveyors or, by a Decree of a Court of law:

A. Description of original monument and accessories and/or subsequent restoration:

B. Description of corner evidence found and/or method applied in restoring or re-establishing corner:

(F-5) Found 1/2" iron in mon. box.

(G-5) Found 1/2" pipe.

C. Description of monument for corner and accessories established to perpetuate locating the position of the corner:

(f-5) 1/2" iron in mon. box. P.K. nail in twin 4" Elm-S.S.W.-41.53'

P.K. nail in 28" Maple-N.E.-46.25'

Small P.K. nail in power pole-S.-28.42'

Chisled notch top of West end 18" C.M.P.-S.E.-39.28'

Chisled "+" on S.W. rim of gate well-N.E.-45.82'

(G-5) 1/2" pipe.

Chisled notch W. end of 60" C.M.P.-W.N.W.-62.02'

Chisled notch E. end of 60" C.M.P.-N.E.-34.23'

P.K. nail in 8" Elm-S.E.-28.72'

cont.

SIGNED BY Donald H. King DATE March 20, 1986

Donald H. King

SURVEYOR'S MICHIGAN REGISTRATION NO. 30085

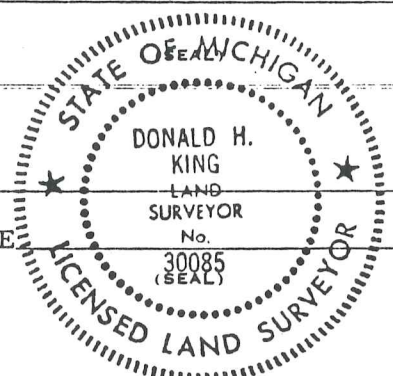
FOR STATE AND UNITED STATES AGENCIES:

SIGNED BY _____ DATE _____

CHIEF OF SURVEY PARTY

APPROVED AND SIGNED BY _____ DATE _____

MICHIGAN REGISTERED LAND SURVEYOR



SURVEYOR'S MICHIGAN REGISTRATION NO. _____

MAY PLACE SKETCH ON BACK OR ATTACHED SHEET Five

9-9F

RD.

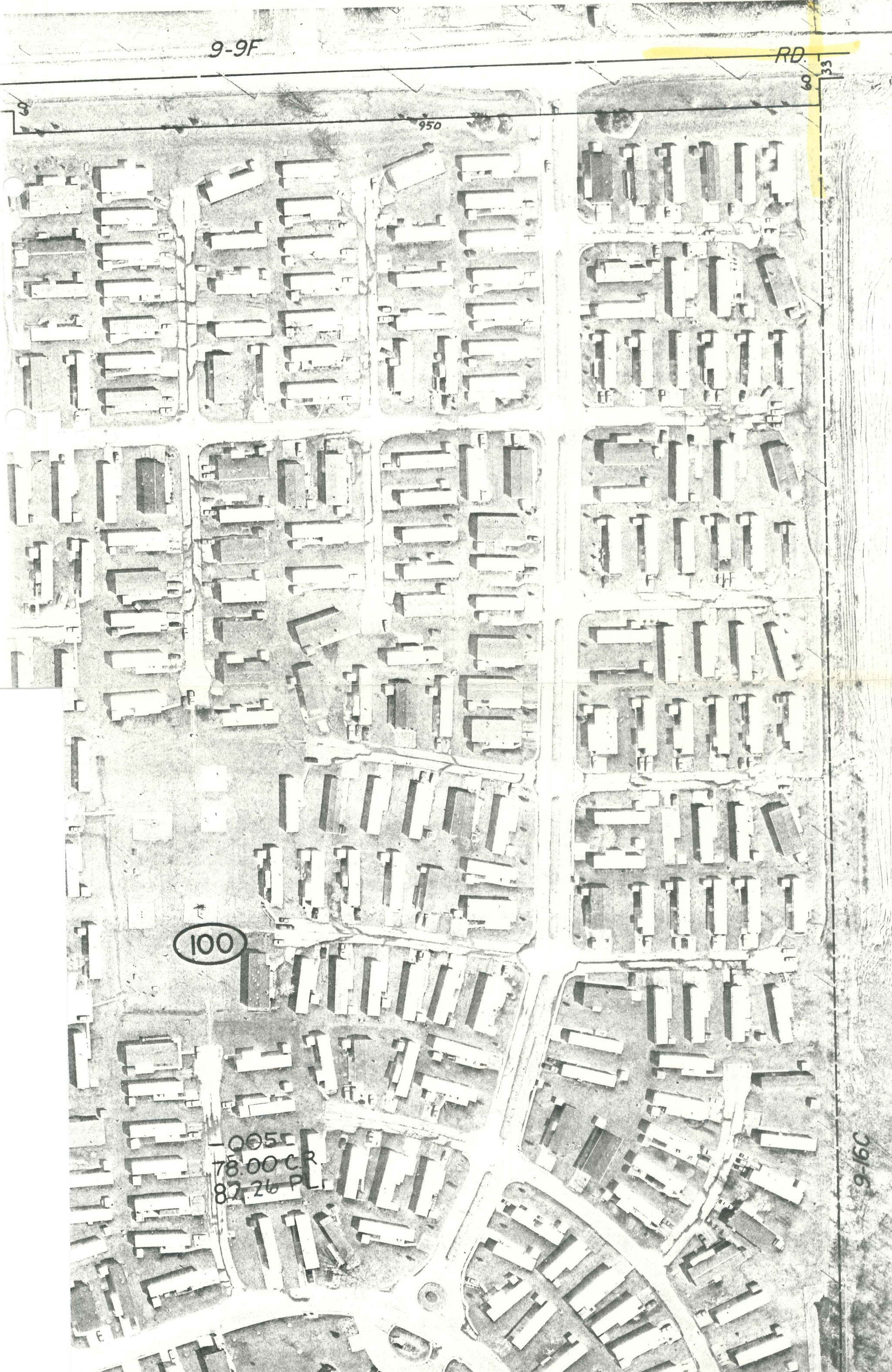
60
33

950

100

005C
78.00 CR
82.26 PL

9-16C



24 MILE

858.4

160.75

1363

-001
26.86

1356.96

-002
5.00

200

862

595

-019
8.244

475

475

9-9f

400

-007
40.00 C.R.
41.89 PL.

24 MILE

9-16C

CHESTERFIELD TN

161.5

323.25

505.88

300

1327.04

-022
5.00

1326.62

-023
5.00

1326.2

-024
10.00 C.R.
10.47 PL.

164.15

164.15

332

RD.

9-16B

LIBER 05290 PG 287

B653661

LAND CORNER RECORDATION CERTIFICATE

Filing Requirement of Act 74, Mich. P.A. 1970

For corners in

Macomb
(County)

Section 9
Located In: Chesterfield Corner Code #7
Twp.

RECORDED IN MACOMB COUNTY
RECORDS AT: 8:379. M

JAN - 6 1992

Edna Hill

CLERK - REGISTER OF DEEDS
MACOMB COUNTY, MICHIGAN

Register of Deeds Stamp & File Number

- 1. Public Land Survey

| | | | | |
|---|-----|---|------|-----|
| T | 3N. | R | 14E. | F-4 |
| T | 3N. | R | 14E. | F-5 |
| T | 3N. | R | 14E. | G-4 |
| T | 3N. | R | 14E. | G-5 |
- 2. Property Controlling in Section

| | | | | | |
|---|-------|---|-------|---|-------|
| S | _____ | T | _____ | R | _____ |
| S | _____ | T | _____ | R | _____ |
- 3. Miscellaneous Property in Sec.

| | | | | | |
|---|-------|---|-------|---|-------|
| S | _____ | T | _____ | R | _____ |
| S | _____ | T | _____ | R | _____ |
- 4. Lot No. _____, Recorded Plat _____
- 5. Private Claims _____

| | A | B | C | D | E | F | G | H | I | J | K |
|----|----|---|----|---|----|---|----|---|----|---|---|
| 2 | 6 | | 5 | | 4 | | 3 | | 2 | | |
| 3 | | | | | | | | | | | |
| 4 | 7 | | 8 | | 9 | ⊕ | 10 | | 11 | | |
| 5 | | | | | ⊕ | ⊕ | | | | | |
| 6 | 18 | | 17 | | 16 | | 15 | | 14 | | |
| 7 | | | | | | | | | | | |
| 8 | 19 | | 20 | | 21 | | 22 | | 23 | | |
| 9 | | | | | | | | | | | |
| 10 | 30 | | 29 | | 28 | | 27 | | 26 | | |
| 11 | | | | | | | | | | | |
| 12 | 31 | | 32 | | 33 | | 34 | | 35 | | |
| 13 | | | | | | | | | | | |

I, Warren C. Avey, in a field survey on March 11, 1991, 19____, do hereby certify that under requirements of P.A. 74, Michigan P.A. of 1970, the corner points mentioned in lines 1 and 2 above were in conformance with regulations and rules therefore as required in the current manual of survey instructions of the United States Department of the Interior, Bureau of Land Management or by a decree of a Court of Law and/or that the corner points mentioned in lines 3, 4 and 5 above were in conformance with the rules of the Michigan Board of Land Surveyors or by a Decree of a Court of Law; established, re-established, monumented, re-monumented, recovered, found as expressed below:

NOTE: Not more than 4 corners, all in the same town and range, may be recorded on this certificate.

A. Description of original monument and accessories and/or subsequent restoration:

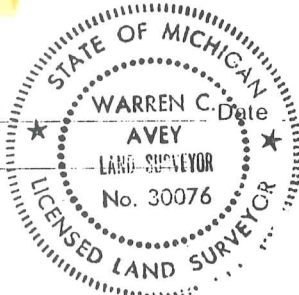
B. Description of corner evidence found and/or method applied in restoring or reestablishing corner:

- F-4 found 1/2" Bar as previously recorded
- F-5 found 1/2" Bar in Mon. Box as previously recorded
- G-4 found 1/2" Bar as previously recorded
- G-5 found 1/2" Bar #30092; fits previous witnesses

C. Description of monument for corner and accessories established to perpetuate locating the position of the corner:

- | | |
|---|---|
| <p>F-4 20.56' S. to PK nail W. side fence post 35.88' S.E. to PK nail N.E. face 24" Ash 49.88' N.W. to centerline Top Hydrant 24.20' N. to PK nail E. face U. Pole</p> <p>F-5 28.46' S. to PK nail in W. face P. Pole 33.38' N. to PK nail E. face P. Pole 46.23' N.E. to PK nail W. face 30" Maple 102.27' S.W. to PK nail N. face P. Pole</p> | <p>G-4 33.00' N. to 1/2" bar 92.25' N.E. to PK nail in S. face U. Pole 33.00' E. to 1/2" bar 118.04' N.W. to PK nail in S. face 8" Maple</p> <p>G-5 45.60' N.W. to PK nail in disk S.W. face U. Pole 40.50' S.W. to PK nail in disk N.W. face U. Pole 50.58' W.S.W. to PK nail in top of guard rail post 25.87' N.E. to PK nail in top of guard rail post</p> |
|---|---|

Signed by Warren C. Avey
Surveyor's Michigan License No. 30076



3-20-91

01671