

LIBER 06166004

1999617

LAND CORNER RECORDATION CERTIFICATE

Filing Requirement of Act 74, Mich. P.A. 1970

RECORDED 8:30 A

For corners in

Macomb (County) Located In: Chesterfield Corner Code # E-6

1. Public Land Survey T 3 N R 14 E

2. Property Controlling in Section S T R

3. Miscellaneous Property in Sec. S T R

DEC 8 1993

Register of Deeds Stamp & File Number

4. Lot No. , Recorded Plat

I, Steven E. Dunn, in a field survey on December 8, 1993, do hereby certify that under requirements of P.A. 74, Michigan P.A. of 1970, the corner points mentioned in lines 1 and 2 above were in conformance with regulations and rules therefore as required in the current manual of survey instructions of the United States Department of the Interior, Bureau of Land Management or by a decree of a Court of Law and/or that the corner points mentioned in lines 3, 4 and 5 above were in conformance with the rules of the Michigan Board of Land Surveyors or by a Decree of a Court of Law; established, re-established, monumented, re-monumented, recovered, found as expressed below:

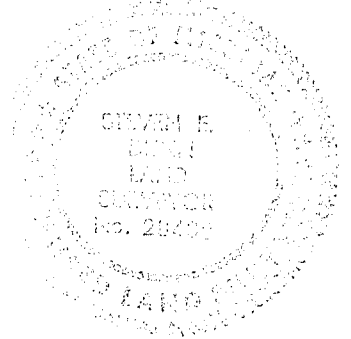
A	B	C	D	E	F	G	H	I	J	K	L	M
2	6	5	4	3	2	1						
3												
4	7	8	9	10	11	12						
5												
6	18	17	16	15	14	13						
7												
8	19	20	21	22	23	24						
9												
10	30	29	28	27	26	25						
11												
12	31	32	33	34	35	36						
13												

NOTE: Not more than 4 corners, all in the same town and range, may be recorded on this certificate.

A. Description of original monument and accessories and/or subsequent restoration:

GLO Post - No evidence of original corner found.

GLO Original survey performed by Preston 2-18-1818.



B. Description of corner evidence found and/or method applied in restoring or reestablishing corner:

E-6 Found 2 1/2" Iron Pipe Verified location by comparing distances to found iron on E-W 1/4 line and to NW section corner. Also compared with copy of Giffels-Webster field notes for corner and witnesses. They call for 3/4" pipe but South witness matches and East witness matches by 0.30'.

Placed Macomb County Monument Marker #28408 on 3/4" X 24" Iron Rod inside 2 1/2" iron pipe

ACCEPTED BY THE MACOMB COUNTY SURVEY PEER GROUP AS THE OFFICIAL CORNER UNDER MICHIGAN PUBLIC ACT 345 OF 1990 AT A MEETING HELD ON 12-20-93 FRANK J. DeDECKER, PS, PE, CHAIRMAN

C. Description of monument for corner and accessories established to perpetuate locating the position of the corner:

E-6 T.3N.,R.14E.

Macomb County Monument Marker #28408 on 3/4" X 24" Iron Rod inside 2 1/2" iron pipe.

Witnesses:

- N.70°W. - 72.27' Set 1/2" iron rod with traverse cap # 28408
- N.53°E. - 4.20' Set scribed "+" on SW corner concrete pad for telephone box.
- S.02°W. - 10.00' Found PK nail and GW tag # 78728 in East side 13" Cherry.
- S.77°E. - 22.20' Found PK nail and GW tag # 78729 in South face utility pole.

The selected location is a careful and faithful perpetuation of the position of the original corner.

Signed by Steven E. Dunn Date 12-22-1993

Surveyor's Michigan License No. 28408



From 3 North Range 17 East

- 13.60 a Run 14 links wide S.E.  
 110.00 Set half mile front from which  
 a Poplar 36 ins diam bears  
 North 26 links dist also an Elm 18 ins  
 diam bears N 81 W 25 links dist  
 58.00 a B. Oak 36 in diam  
 80.00 Set front for Sections 6, 7, 16, 17 from  
 which a Beech 20 ins diam bears S  
 74 W 20 links dist also a Beech 24 ins  
 diam bears N 54 E 6 links dist  
 1<sup>st</sup> half mile level front wet part dry  
 2<sup>nd</sup> rate last half mile same as first  
 Timber W. Oak Red Oak Beech Sugar  
 & Undergrowth Spice Ironwood

West - On Roadway between 8 & 17

- 14.47 a Run 5 links corner S.E.  
 79.98 Intersect West boundary 37 links South  
 corner Timber front wet part dry 2<sup>nd</sup> rate  
 Timber W. Oak Beech Sugar Elm  
 B. Oak & Undergrowth Ironwood Spice  
 B. Oak

East Corridor between 8 & 17

- 37.77 Set front for 14 sections from which  
 a Cypress 18 in diam bears N 53 W  
 14 links dist also an Ironwood 10  
 ins diam N 32 E 22 links dist  
 79.98 To Section corner

South Between Sections 17 & 16

- 35.00 a Beech 18 ins diam  
 110.00 Set half mile front from which  
 a Beech 12 ins diam bears N 27 W 21 links  
 dist also a Beech 12 ins diam bears S 17 E 14 links

Form 3 North Range 11/ East

48.75 a Run of links wide course &  
 60.40 a B. Ash 18 ins diam  
 80.50 Set post for section 17, 16, 21, 20  
 fork which a Poplar 28 ins diam  
 bears S 70 E 14 links dist also a  
 Maple 18 ins diam bears S 45 E 11  
 links dist - 1<sup>st</sup> half mile level and dry  
 good 2<sup>nd</sup> rate last half mile level  
 and mostly dry 2<sup>nd</sup> rate  
 Timber Poplar W. Oak Beech Sugar  
 Elm & Undergrowth Spruce Birch &

West On Random between S. 17 & 20  
 110.00 Set temporary half mile post  
 80.50 Disturbed West boundary 51 links south corner  
 level and wet 3<sup>rd</sup> rate  
 Timber B. Ash Beech Birch &  
 Undergrowth B. Ash

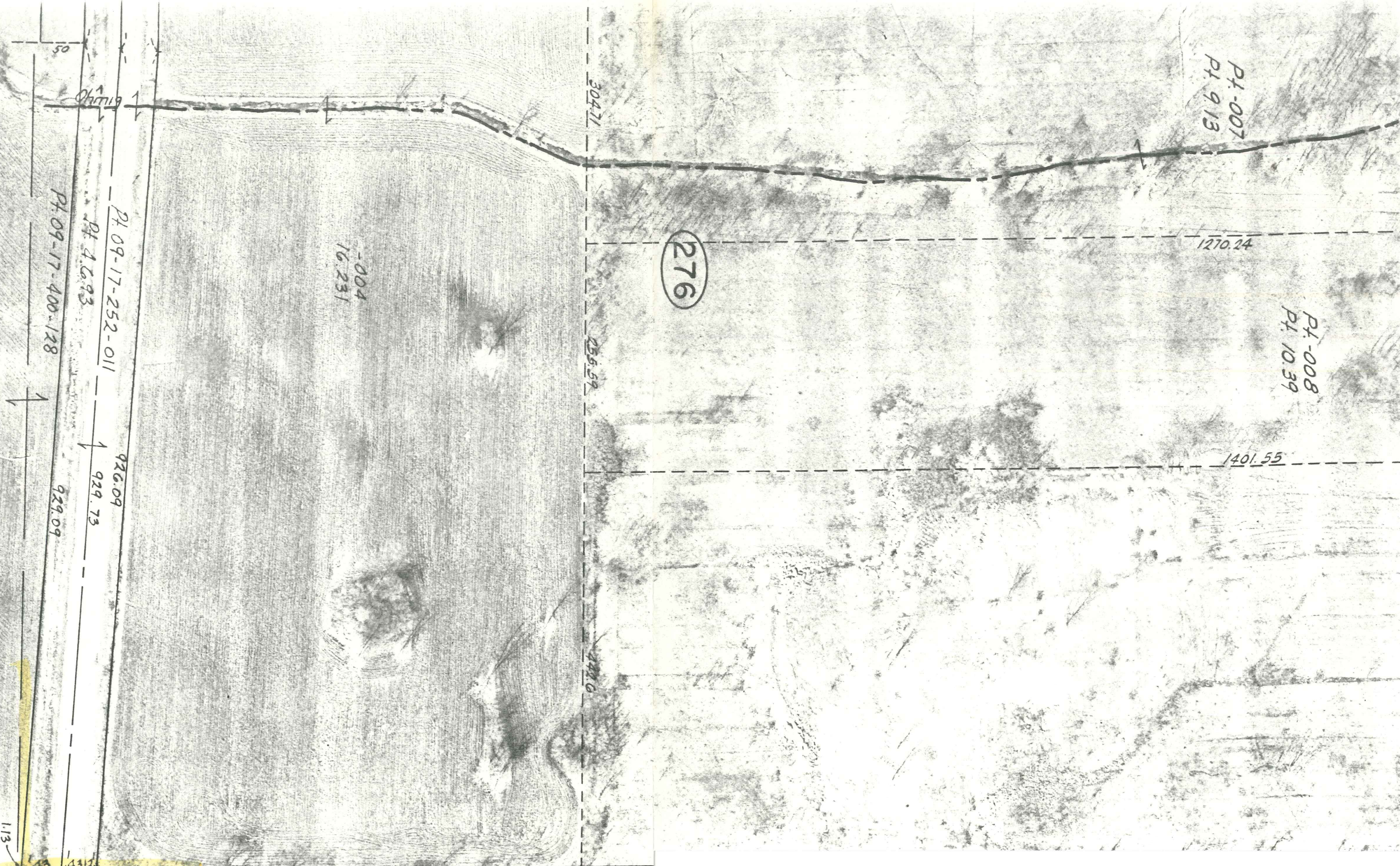
East Corrected between S. 17 & 20  
 110.25 Made 1/4 Section corner on a Sugar tree  
 18 ins at average distance calculation  
 80.50 To Section corner

South Between Sections 11 & 3  
 35.63 a W. Oak 8 ins diam  
 40.00 Made half mile corner on a  
 B. Ash 5 ins diam  
 118.69 on Elm 36 ins diam  
 65.85 a Pond  
 67.00 Left Pond  
 80.00 Made corner for Section 4, 3, 8, 10 on a  
 Beech 12 ins diam 1<sup>st</sup> half mile level  
 and dry good 2<sup>nd</sup> rate last half mile just wet  
 2<sup>nd</sup> rate Timber W. Oak Beech B. Ash Elm Spruce &  
 Undergrowth B. Ash Cornus

Township N.° III North



1/2 NE 1/4 SEC. 17 T.3N. R.14E.  
CHESTERFIELD TWP.



Pt. 007  
Pt. 9.13

Pt. 008  
Pt. 10.39

276

-004  
16.231

Pt. 09-17-252-011  
Pt. 4.6.93  
Pt. 09-17-400-128

926.09  
929.73  
929.09

304.71

255.59

441.0

1270.24

1401.55

1.13



9-17D

E. 1/4 POST

1.13

929.09

Drain

1651.45 CAL.

9-1

400

- 128  
45.790 C.R.  
(50.569 CAL.)

Ohm

9-16A

PT 09-16-300-001  
P. 44.82 PL.

Ohmig

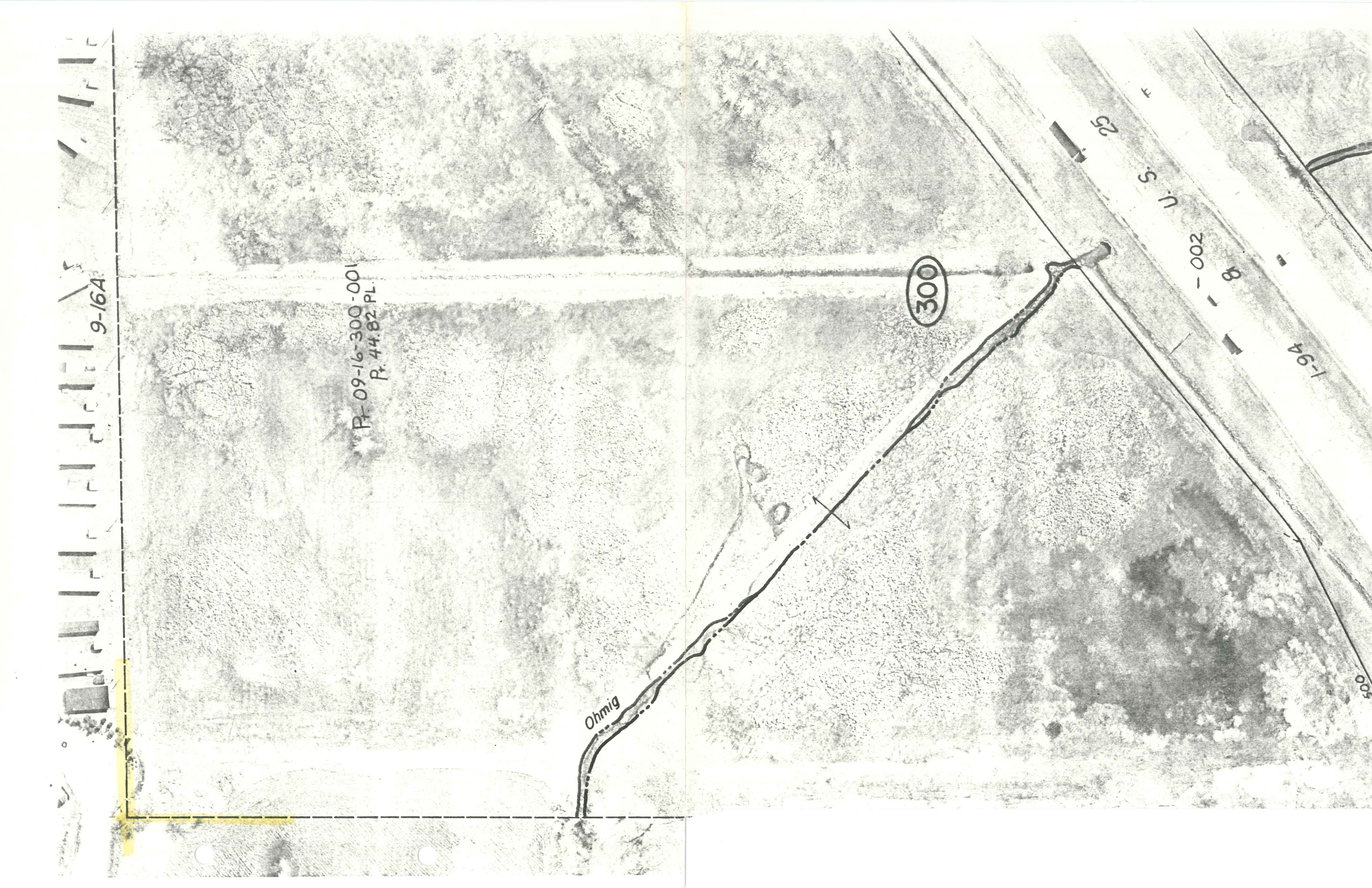
300

U.S.

-002

I-94

500





9-17D

1358.41

298.30

160.20

136.49

197.40

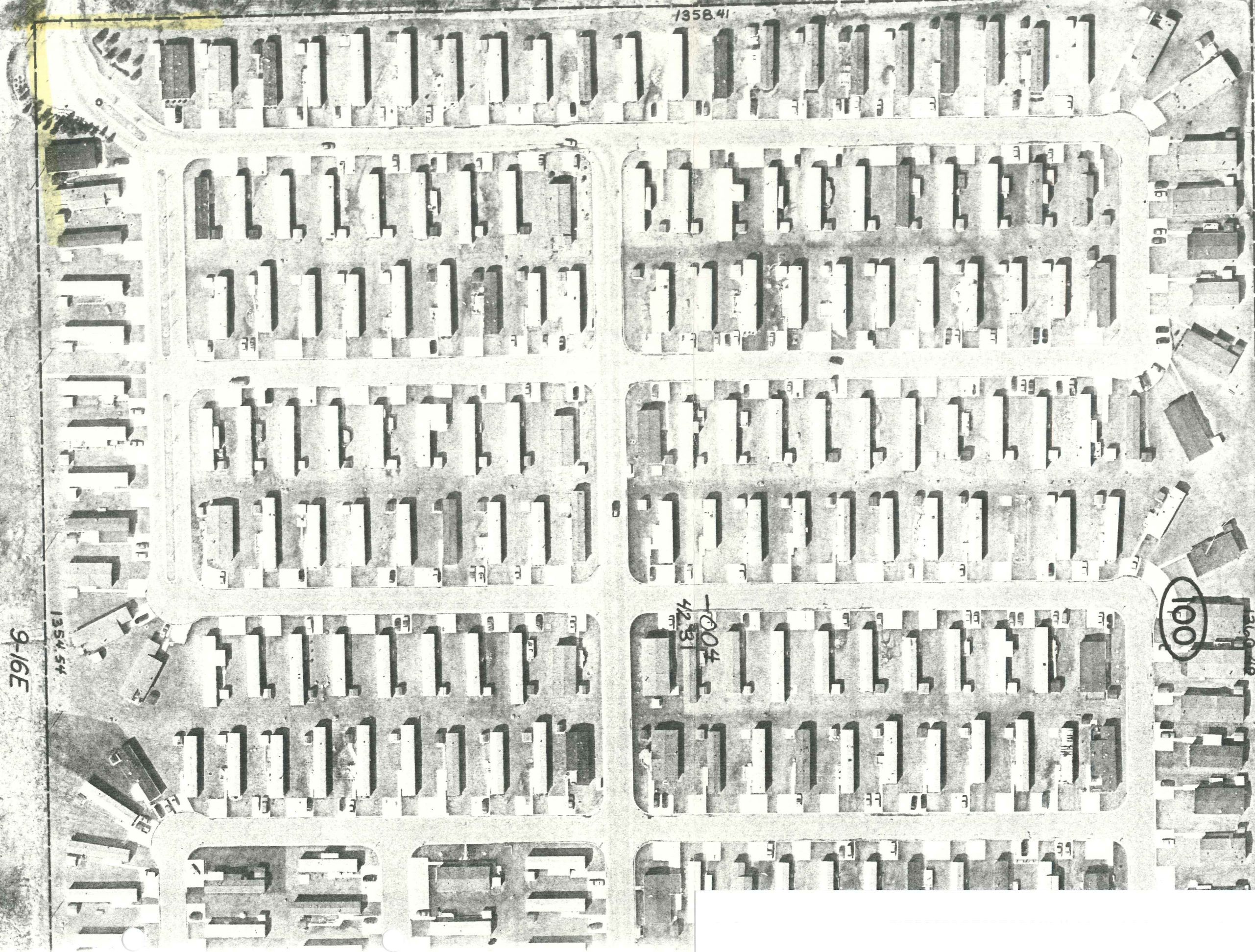
100

1004  
42.31

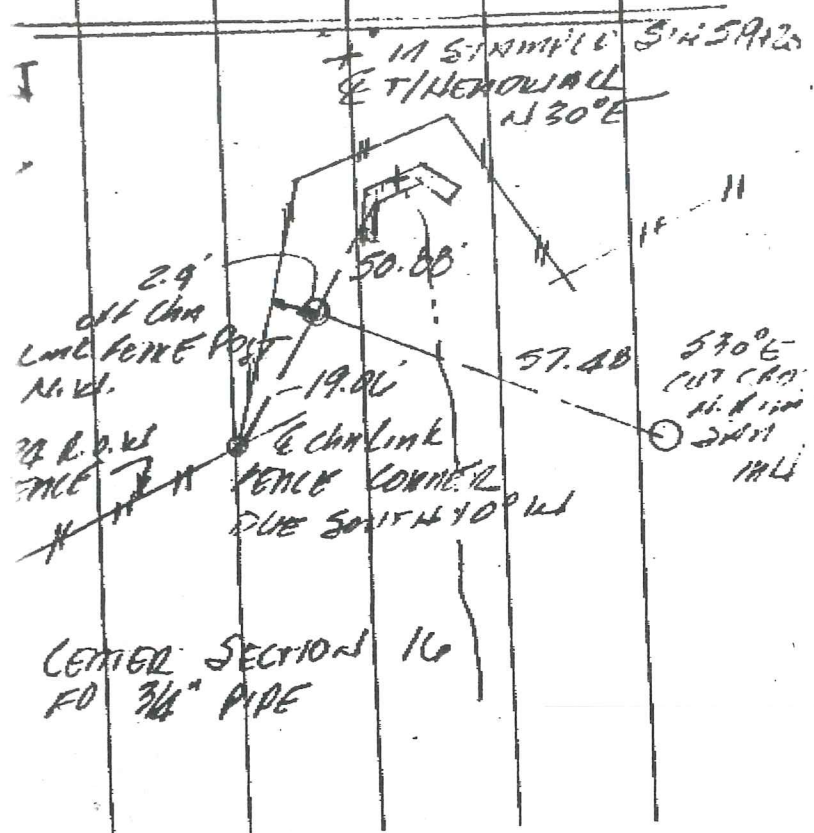
1354.54

9-16E

QUITTED D TWD



$\pi$	$C^3$	$0^\circ$	$\rightarrow B$ (Cont.)
5-40-28	128-34-50	41-36	O. Delome
1-03-14	131-04-14"		10 (K) 10 SAM 28
5-22-46	5-22-38		472.37 @ 769.46
	(m. 5-22-42")		
71-19-16"	128-41-36		1042' N.A. SW
7-59-46"	65-28-08"		217.50 @ 39
6-01-30"	296-42-32" ?		269.43



$\pi$	$C^3$	$0^\circ$	$\rightarrow B^V$
00-00-12"	100-00-13"	200-00-23"	SIMILOR SEC 17
213-08-17"	313-08-21"	53-08-24"	
213-08-05"	213-08-08"	213-08-01/1494.07-	
	(m. 213-08-05")		

