

**INDEX**  
**C-01 NORTHEAST CORNER SECTION 6**  
**2015 REMON**  
**T2N, R14E, HARRISON TOWNSHIP,**  
**MACOMB COUNTY, MICHIGAN**  
**COMMON WITH**  
**C-13 SOUTHEAST CORNER SECTION 31**  
**2015 REMON**  
**T3N, R14E, CHESTERFIELD TOWNSHIP,**  
**MACOMB COUNTY, MICHIGAN**

**SECTION 1:**

1. Index
2. Before Pictures of Point and in Each Cardinal Direction
3. After Pictures of Point

**SECTION 2:**

1. LCRC
2. Surveyor's Report

**SECTION 3:**

1. 1818 Original Government Survey map (1 page)
2. 1875 Map of Harrison Township (1 page)
3. 1895 Map of Harrison Township (1 page)
4. 1916 Map of Harrison Township (1 page)
5. 2006 Map of Harrison Township (1 page)
6. 2012 Harrison Township Aerial Composite Map (12-06D)
7. 2015 Field Notes with Corner Witnesses (1 page)

**SECTION 4:**

1.	1818	Original GLO Notes	Wm Preston	(1 page)
2.	1818	Original GLO Map	Wm Preston	(1 page)
3.	1937	"S.P. No. 8"	Burt W. Howey Civil Engineer	L. 18, P. 19
4.	1951	"S.P. of Goike Acres"	Harry J. Fuller #1645	
5.	1989	L.C.R.C.	Donald Gorman #17622	L.17622, P.41
6.	1991	MDOT M-59 Right of Way Map Sheet 40		Unrecorded
7.	1992	Certificate of Survey	Raymond Donnelly #21563	Unrecorded
8.	1998	Boundary Survey	Robert L. Smith #16052	Unrecorded
9.	2003	Boundary Survey	Derek Kosicki #43058	Unrecorded
10.	2004	Boundary Survey	Steven Dunn #28408	Unrecorded
11.	2011	L.C.R.C.	Robert Hornyak #44286	L. 21034, P. 641

**C01**

**N. E. Corner of Section 6**

**T.2N.,R.14E. Harrison Twp.**

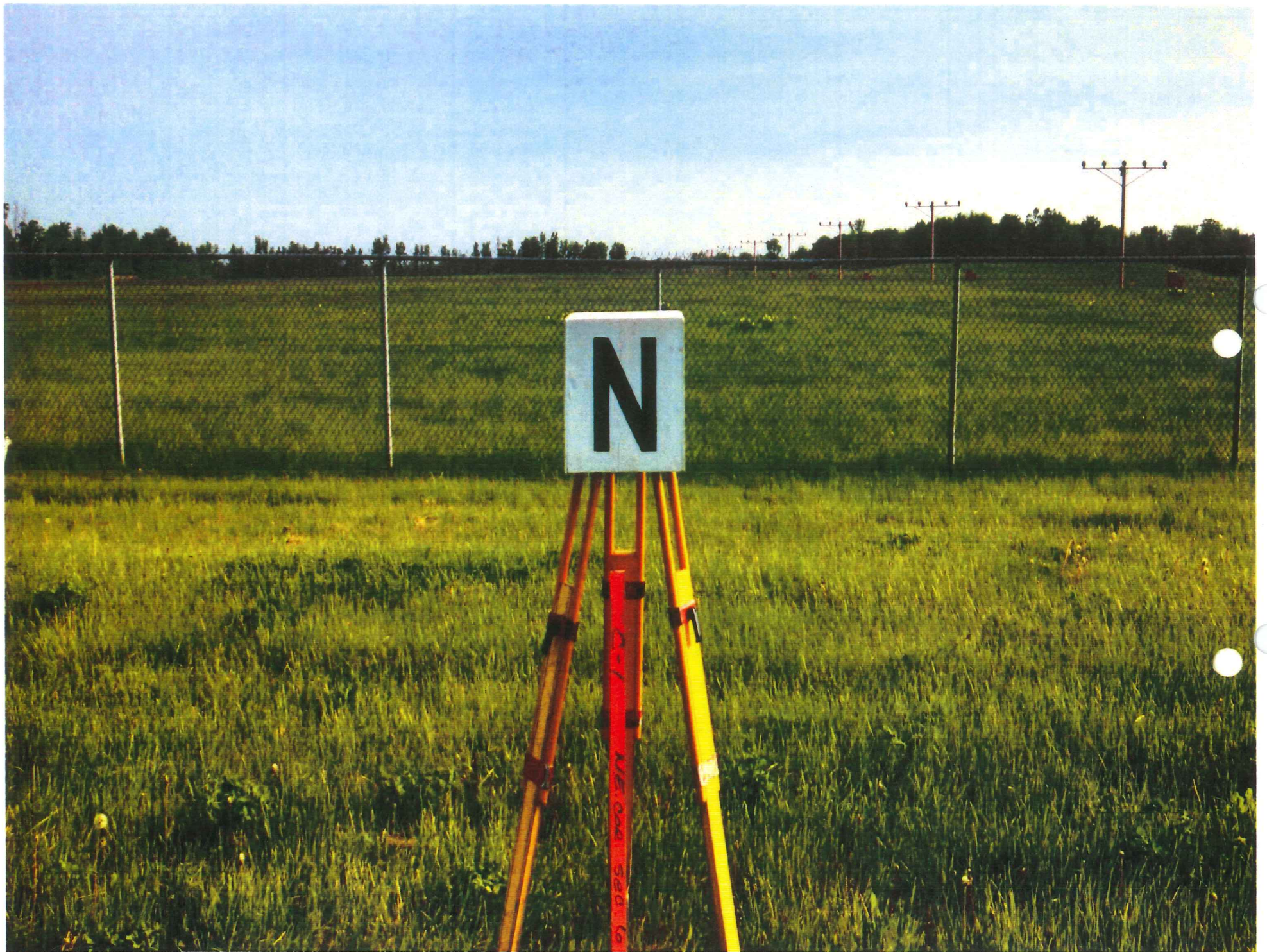




**C01**

**N. E. Corner of Section 6**

**T.2N.,R.14E. Harrison Twp.**









**Land Corner Recordation Certificate**  
**Attachment B to 2015 Annual Grant Agreement**  
 Authority: MCL 54.205 and R54.202

This form is **ONLY** for corners filed under the 2015 State Survey and Remonumentation Grant Agreement

Filing Requirement: MCL 54.268(2)(a), 54.268(2)(d), 54.201 – 54.210d and 2015 State Survey and Remonumentation Grant Agreement

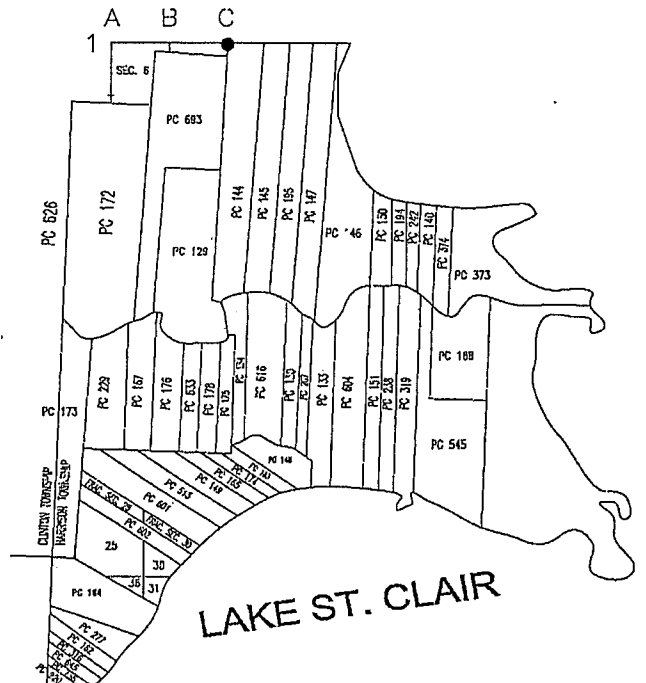
**Notes:**

- No more than two Original Public Land Survey Corners can be recorded on this certificate
- If a corner reported hereon is common to two or more survey townships, each Town, Range and Corner Code for the corner may be identified on this certificate
- If a corner reported hereon is common to two or more counties, each county may be identified on this certificate and a copy of this certificate filed with the Register of Deeds in each county

For corner in: Macomb County

Harrison Township C-01 Common With  
 Chesterfield Township C-13

Corner Type	Survey Township	Corner Code
Original Public Land Survey Corner	T 2 N. R 14 E	C-01
		Common With
	T 3 N. R 14 E.	C-13
	T R	
Property Controlling Corner	S T R	
	S T R	
	S T R	
	S T R	
Protracted Public Land Survey Corner	T R	
	T R	
	T R	
	T R	



C-01 Northeast Corner of Section 6, Harrison Township Common With  
 C-13 Southeast Corner Section 31, Chesterfield Township

**Part A: Corner(s) History**

1. 1818	Original GLO Notes	Wm Preston	(1 page)
2. 1818	Original GLO Map	Wm Preston	(1 page)
3. 1937	"S.P. No. 8"	Burt W. Howey Civil Engineer	L. 18, P. 19
4. 1951	"S.P. of Goike Acres"	Harry J. Fuller #1645	L. 26, P. 11
5. 1989	L.C.R.C.	Donald Gorman #17622	L.17622, P.41
6. 1991	MDOT M-59 Right of Way Map Sheet 40		Unrecorded
7. 1992	Certificate of Survey	Raymond Donnelly #21563	Unrecorded
8. 1998	Boundary Survey	Robert L. Smith #16052	Unrecorded
9. 2003	Boundary Survey	Derek Kosicki #43058	Unrecorded
10. 2004	Boundary Survey	Steven Dunn #28408	Unrecorded
11. 2011	L.C.R.C.	Robert Hornyak #44286	L. 21034, P. 641



**Part B: Surveyor's Report on Perpetuation or Monumentation of Corner(s)**

The corner was perpetuated with a found 1/2" iron. There are no lines of occupation. Field evidence from items 3, 5, 6, 7, 8, 9, 10 and 11 were used to verify the location of the found iron.

**Distances:**

C-01 Harrison Twp. To B-01 Harrison Twp.	C-01 Harrison Twp./ C-13 Chesterfield Twp.
C-13 Chesterfield Twp. To B-13 Chesterfield Twp.	To S.E. Corner of S.P. #8 Found Iron
2589.18' (39.23 chains GLO Notes)	1215.64' Record
2588.52' (39.22 chains GLO Map)	1215.55' S.P. of Goike Acres
2598.08' Donnelly	1214.84' Gorman
2597.88' Smith	1214.56' Dunn
2598.11' Kosicki	1211.20' Smith
2598.11' Dunn	1214.75' 2015 Remon
2597.81' Hornyak	
2598.23' 2015 Remon	

**Angular Measurement:**

A-01, B-01, C-01 Harrison Township to A-13, B-13, C-13 Chesterfield Township  
180°18'08" Donnelly  
180°17'53" Dunn  
180°17'35" 2015 Remon

S.E. Corner S.P. #8, C-01, PC-046 (N.E. Corner Private Claim 693 Remon. 2014)  
94°20' MDOT Right of Way map  
94°23'44" 2015 Remon

**Part C: Field Evidence of Perpetuation or Monumentation of Corner(s)**

I replaced the found iron with a 4" diameter by 36-inch long concrete monument with a 1/2" iron rod with A 2 inch diameter aluminum cap stamped "MACOMB COUNTY MONUMENT MI ACT 345 30103 C-01 - C-13

**Witnesses:**

N56°E	34.33'	Cut "X" rim of valve in well.
S80°E	91.60'	Northwest bolt of run-way light.
S39°E	142.98'	Northwest bolt of runway light.
N82°W	371.36'	Top center of fire hydrant.
S68°W	186.38'	Set Mag nail and Macomb County Witness tag in asphalt.

Date of Observation	Latitude	Longitude	Datum and Adjustment Year	Epoch Date
08/20/2015	42°37'50.11"	-82°50'11.96"	August 2011	2010

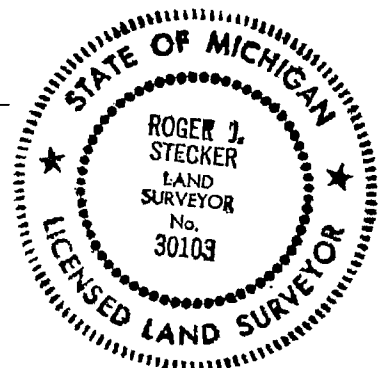
Method for coordinate determination: GPS Survey

Disclaimer on accuracy of values reported relative to their use: +/- 1 foot.

I, Roger J. Stecker, in a field survey on 06/02/2015, certify under the requirements of the State Survey and Remonumentation Act, 1990 PA 345, MCL 54.261 to 54.279, and the Corner Recordation Act, 1970 PA 74, MCL 54.201 to 54.210d, that the corner identified and described hereon has been perpetuated or monumented as described in Parts A, B, and C above, pursuant to the laws and rules of the State of Michigan.

*Roger J. Stecker*      12-4-2015  
Roger J. Stecker, P.S.      Date

Professional Surveyor's License No.: 30103  
Lehner Associates, Inc.  
17001 19 Mile Rd., Suite 3  
Clinton Township, MI 48038



Land Corner Recordation Certificate  
Attachment B to 2015 Annual Grant Agreement  
T2N R14E Code C-01  
Page 3 of 3

I, Martin C. Dunn, P.S., Macomb County Surveyor Representative, confirm that the corner identified and described hereon and perpetuated or monumented as described in Parts A, B, and C above was presented to and reviewed by the Peer Review Group on October 27, 2015 and is accepted for filing in the Macomb County Remonumentation Program.

Martin C. Dunn

12-8-2015

Martin C. Dunn, P.S.

Date

Professional Surveyor's License No.: 30081

**SURVEYOR'S REPORT  
C-01 NORTHEAST CORNER SECTION 6  
HARRISON TOWNSHIP, T2N, R14E  
COMMON WITH  
C-13 SOUTHEAST CORNER SECTION 31  
CHESTERFIELD TOWNSHIP, T3N, R14E**

**GLO HISTORY:**

**GLO Notes for Northeast Corner Section 6**

See attached original notes

Surveyor General's Office  
February 18, 1818

William Preston

**GLO Map of Field Notes**

See attached map

Surveyor General's Office  
February 18, 1818

William Preston

**EXISTING CONDITIONS:**

The corner was perpetuated with a found ½" iron. There are no lines of occupation. Field evidence from items 3, 5, 6, 7, 8, 9, 10 and 11 were used to verify the location of the found iron. I recommend to the Peer Group to accept the found ½" iron as the best evidence of the corner position.

**RECORDED & UNRECORDED SURVEYS, & FIELD NOTES:**

1.	1818	Original GLO Notes 1" Bur Oak	Wm Preston	(1 page)
2.	1818	Original GLO Map Object not stated	Wm Preston	(1 page)
3.	1937	"S.P. No. 8" Shows corner, object not stated	Burt W. Howey Civil Engineer	L. 18, P. 19
4.	1951	"S.P. of Goike Acres" Shows corner, object not stated	Harry J. Fuller #1645	L. 26, P. 11
5.	1989	L.C.R.C. Boat spike and ribbon	Donald Gorman #17622	L.17622, P.41
6.	1991	MDOT M-59 Right of Way Map Sheet 40 Shows corner, object not stated		Unrecorded
7.	1992	Certificate of Survey Shows corner, object not stated	Raymond Donnelly #21563	Unrecorded
8.	1998	Boundary Survey Found iron	Robert L. Smith #16052	Unrecorded
9.	2003	Boundary Survey Found iron pin	Derek Kosicki #43058	Unrecorded
10.	2004	Boundary Survey Shows corner, object not stated	Steven Dunn #28408	Unrecorded
11.	2011	L.C.R.C. Shows distance from B-13 to C-13. Object not stated	Robert Hornyak #44286	L. 21034, P. 641

**DISTANCES:**

C-01 Harrison Twp. To B-01 Harrison Twp.  
C-13 Chesterfield Twp. To B-13 Chesterfield Twp.  
2589.18' (39.23 chains GLO Notes)  
2598.08' Donnelly  
2597.88' Smith  
2598.11' Kosicki  
2598.11' Dunn  
2597.81' Hornyak  
2598.23' 2015 Remon

C-01 Harrison Twp./ C-13 Chesterfield Twp.  
To S.E. Corner of S.P. #8 Found Iron  
1215.64' Record  
1214.84' Gorman  
1214.56' Dunn  
1211.20' Smith  
1214.75' 2015 Remon

Angular Measurement:

A-01, B-01, C-01 Harrison Township to A-13, B-13, C-13 Chesterfield Township  
180°18'08" Donnelly  
180°17'53" Dunn  
180°17'35" 2015 Remon

S.E. Corner S.P. #8, C-01, PC-046 (N.E. Corner Private Claim 693 Remon. 2014)  
94°20' MDOT Right of Way map  
94°23'44" 2015 Remon

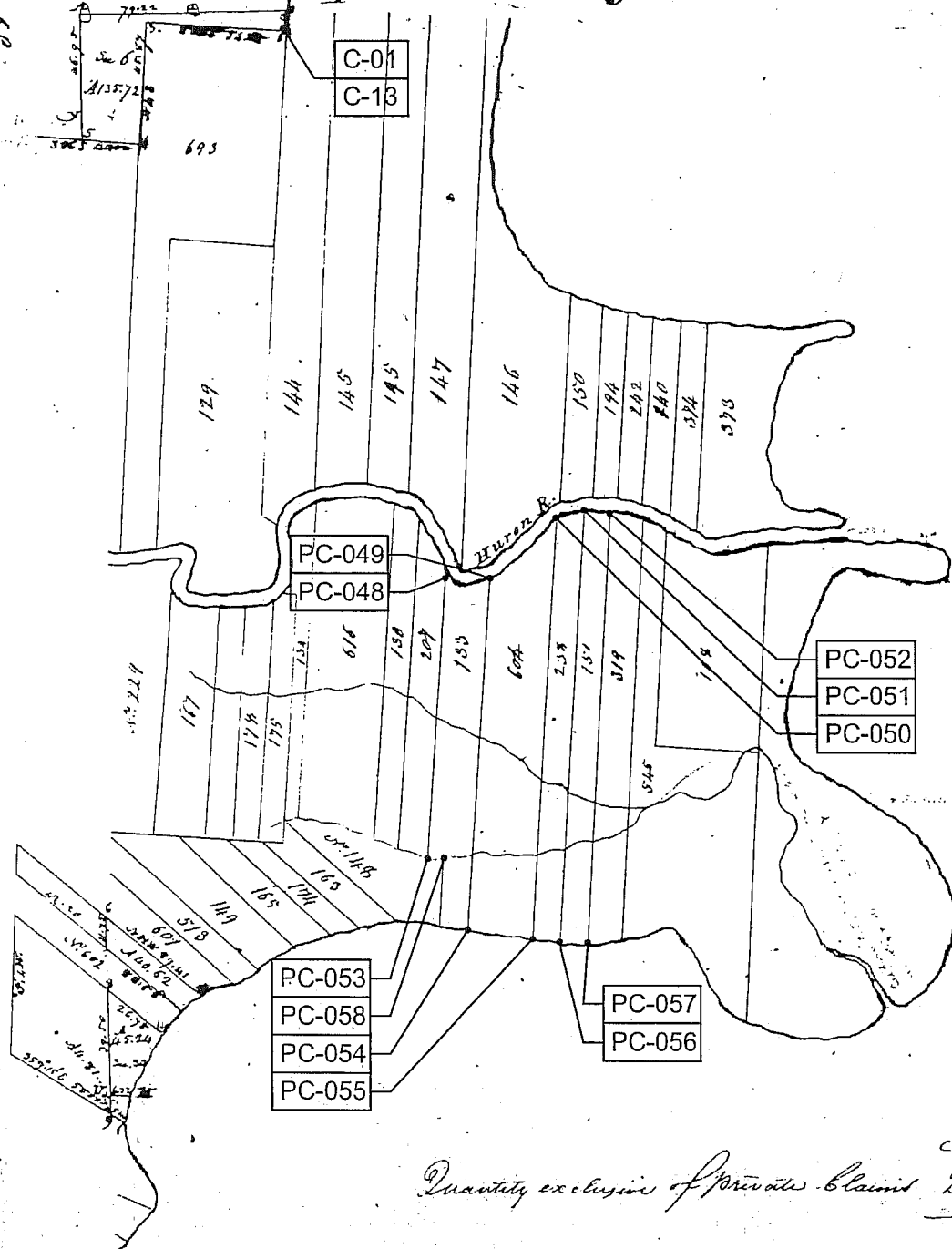
**RECOMMENDATIONS:**

I replaced the 1/2" found iron rod with a 4" diameter concrete monument, 36" long with a 1/2" iron rod having a 2" diameter aluminum cap stamped:  
Macomb County Monument, MI Act 345, 30103, C-01 – C-13.

**WITNESSES: C-01 Harrison Twp. Common with C-13 Chesterfield Twp. CORNER**

N56°E 34.33' Cut "X" rim of valve in well.  
S80°E 91.60' Northwest bolt of run-way light.  
S39°E 142.98' Northwest bolt of run-way light.  
N82°W 371.36' Top center of fire hydrant.  
S68°W 186.38' Set Mag nail and Macomb County Witness tag in asphalt.

Township N. II North, Range N. XIV East of the Mer. (Mich. Ten)



S. C. L. A. I. R.

Quantity exclusive of Private Claims 226-39  
*(Any see)*

A true copy from the Original on file in this Office

Surveyor General's Office  
 July 20 1878  
 2N, 14E HARRISON

*Edwards*  
 Surveyor

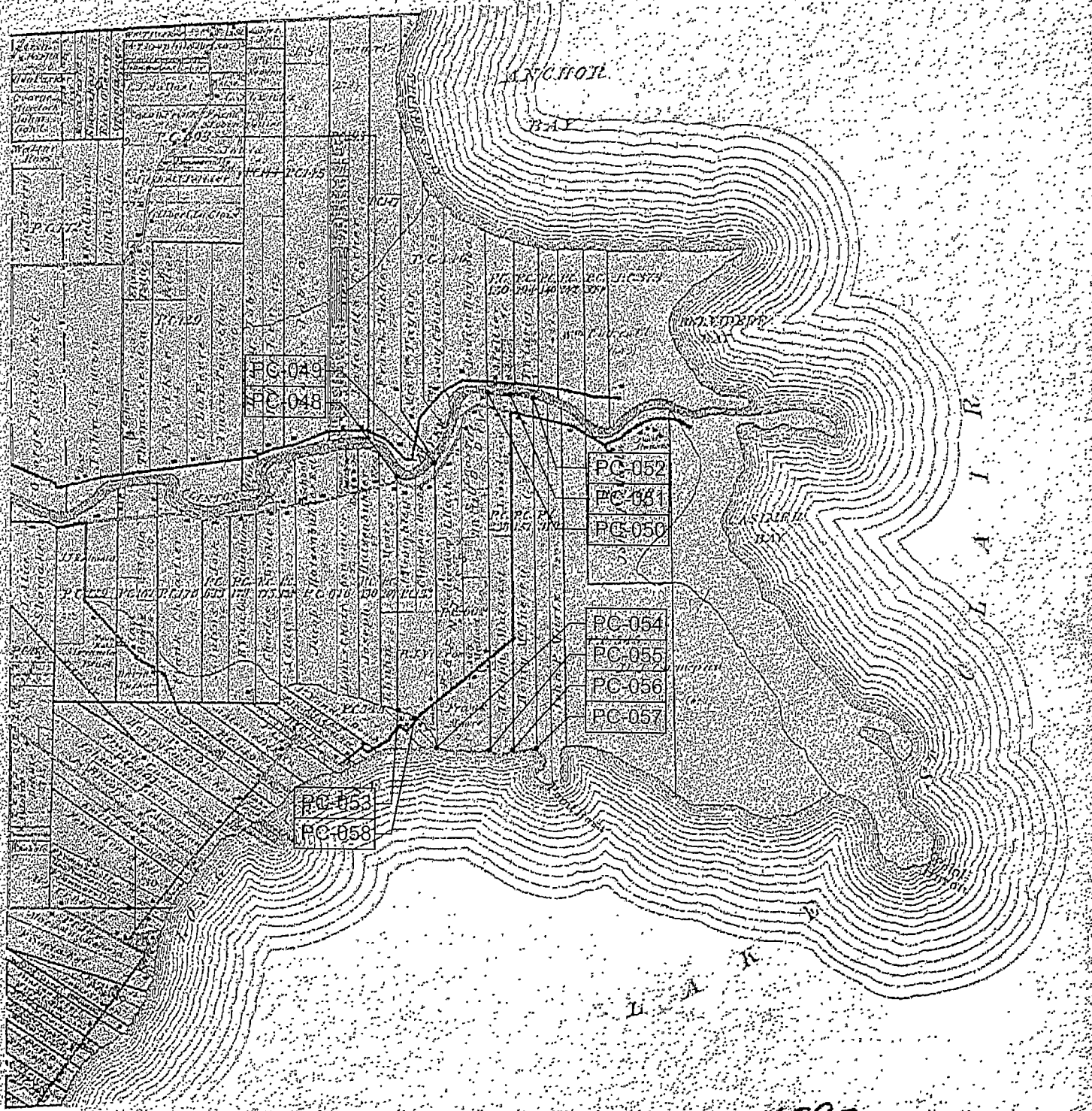


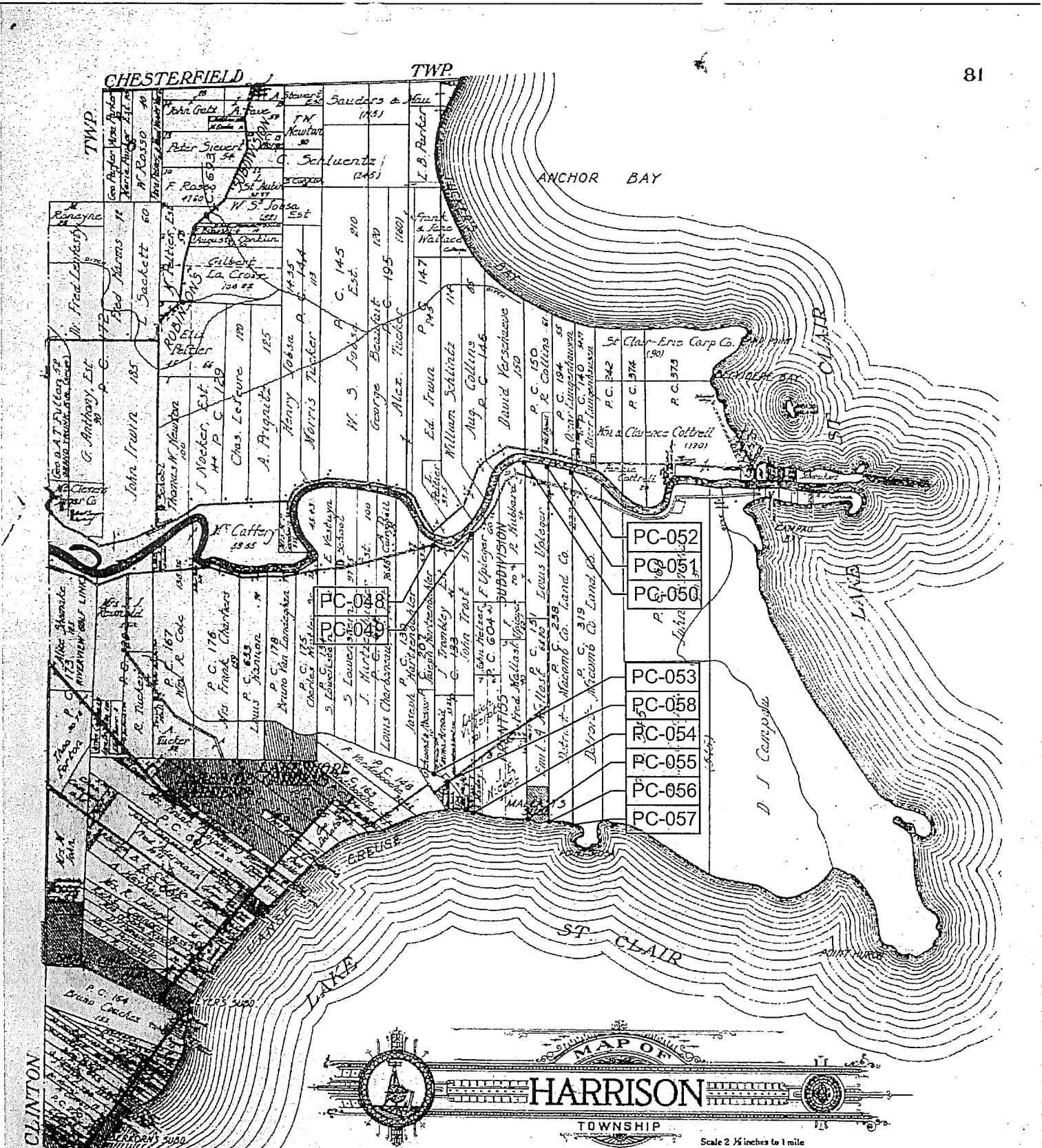
# MAP OF HARRISON

Township 2 North Range 14 East

Scale 2 Inches to one Mile

of the Section of Meridian





- PC-052
- PC-051
- PC-050
- PC-053
- PC-058
- PC-054
- PC-055
- PC-056
- PC-057

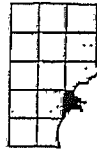

**MAP OF**  
**HARRISON**  
 TOWNSHIP  
 Scale 2 1/2 inches to 1 mile

Part of Fractional Township 2 North, Range 14 East and  
 Fractional Township 2 North, Range 14 East  
 of the Michigan Meridian



# HARRISON

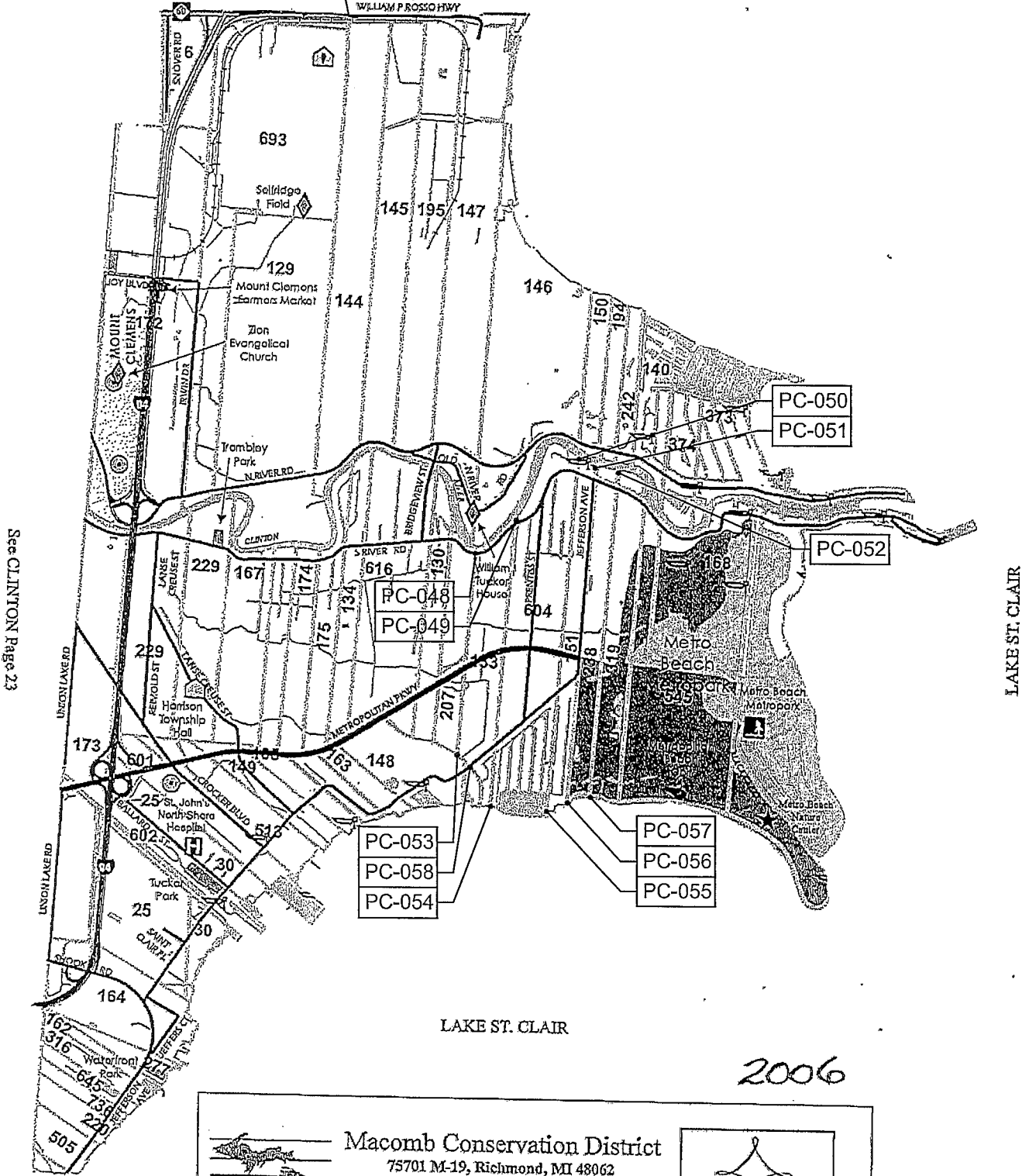
T. 2N. - R. 14E.



C-01

C-13 See CHESTERFIELD Page 31

WILLIAM P. ROSSO HWY

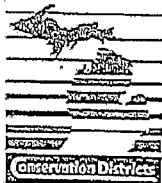


See CLINTON Page 23

LAKE ST. CLAIR

LAKE ST. CLAIR

2006



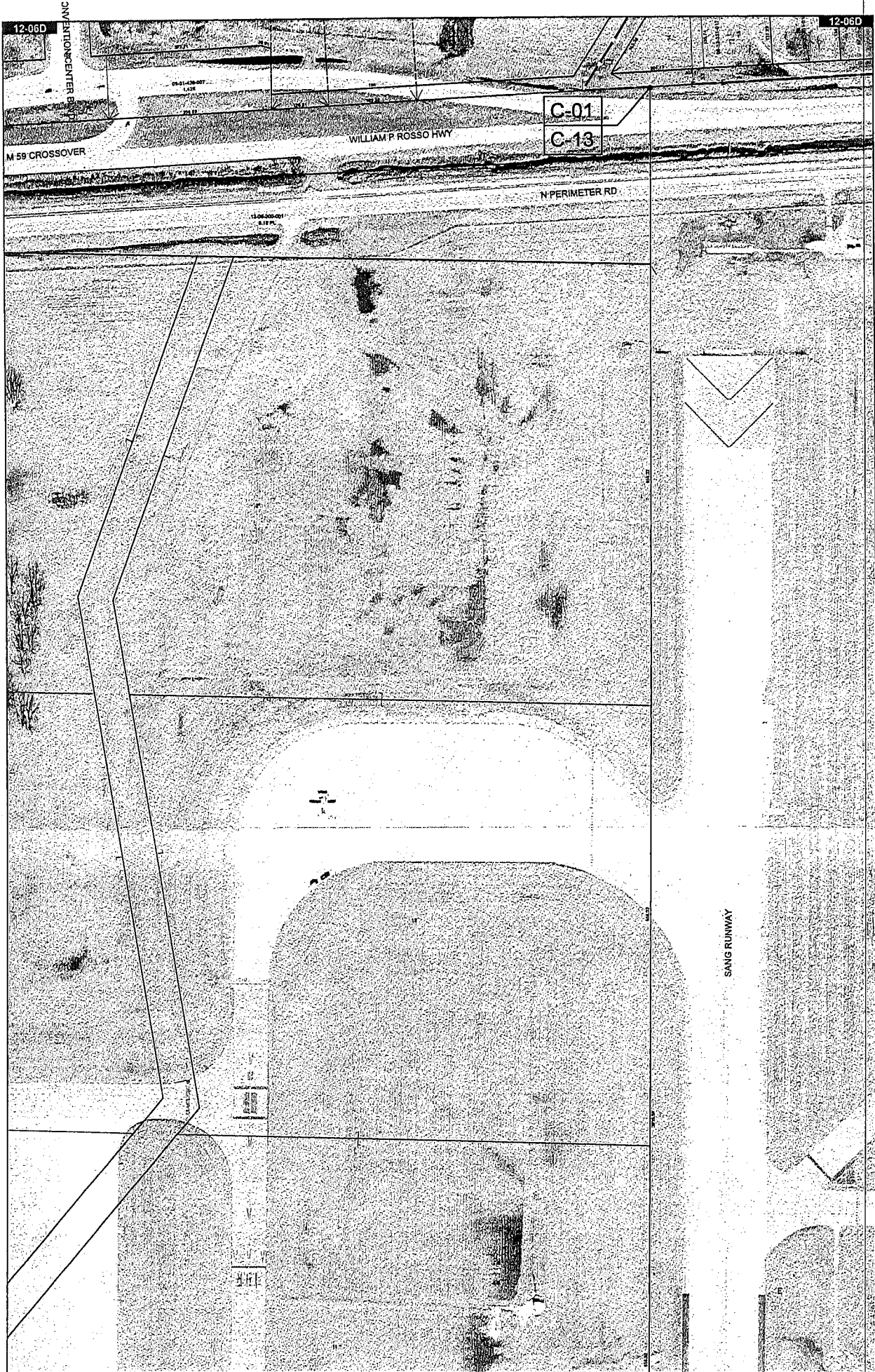
## Macomb Conservation District

75701 M-19, Richmond, MI 48062  
 Phone: 586-727-2666 Fax: 586-727-2621  
 E-mail: macombcd@klondyke.net  
 Website: www.macombcd.com

Assistance available for:  
 Tree Sales Forestry Native Plants  
 Conservation Education



*Celebrating  
 55 Years of  
 Managing  
 Macomb County's  
 Natural Resources*

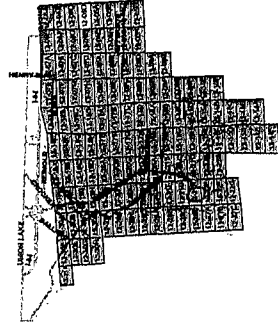
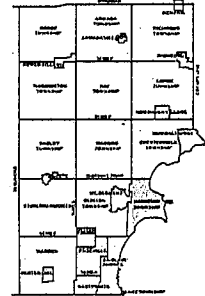
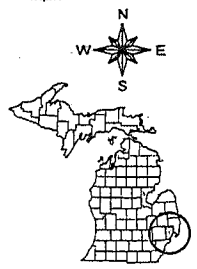


Date of Photography: Spring 2012  
 100 50 0 100 200 Feet  
 1:1,200

HARRISON TWP SHEET INDEX

DESCRIPTION OF PERMANENT REAL ESTATE INDEX NUMBER  
**13-19-302-018**  
 AREA: 1.00 ACRES  
 SUBDIVISION: 13-19-302-018  
 BLOCK NUMBER: 13-19-302-018  
 PARCEL NUMBER: 13-19-302-018

**12-06D**  
 HARRISON TWP  
 E.1/2 N.E. 1/4 SEC.6 T.2N. R.14E.



**Legend**

- Platted Area Boundary Line
- Property Line
- Property Split Line
- Property Combined Line
- Township Boundary Line
- Traverse Line
- Dimension Extent Marks
- Dimension Start Marks

Source: Macomb County Department of Planning and Economic Development  
 - 2008 Digital Orthophotography Project  
 - Parcel Conversion Project

Note:  
 Digital Orthophotography horizontal positioning accuracy is 3 feet. Parcel boundary lines should be considered a graphical representation and not in any way a legal survey or engineering document. In general, the horizontal positioning and length accuracy is within 15 feet.  
 This map is intended for general planning purposes. Site specific evaluation should be verified by field inspection. This is a work in progress and may contain errors and omissions. Please report any potential revisions to (586)460-5285.

COPYRIGHT 2008 MACOMB COUNTY, MI All Rights Reserved



**MACOMB COUNTY**  
 Planning and Economic  
 Development Department

Published: Jun 06 2013

5-26-2015

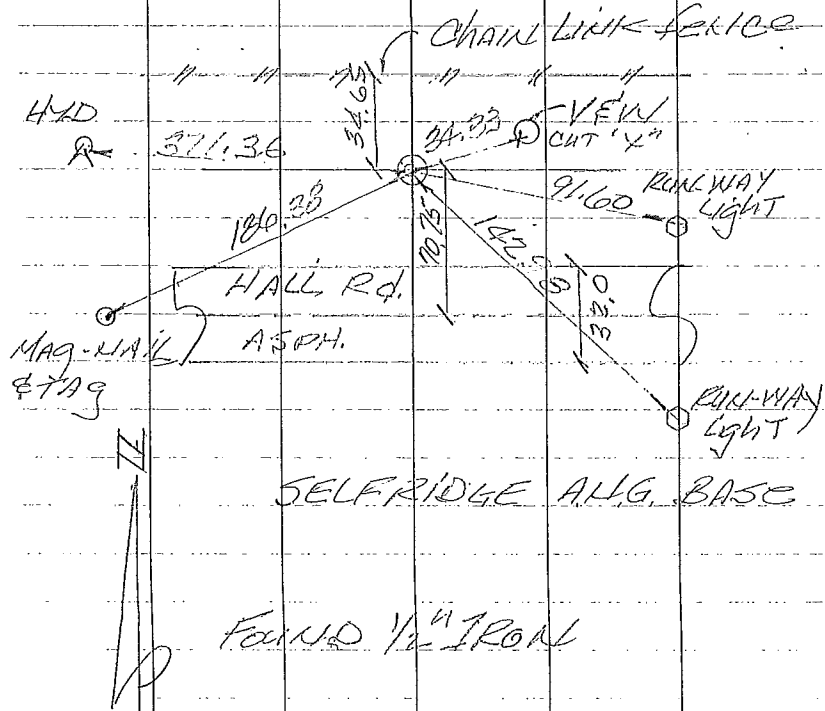
RS BS

HARRISON Twp. C-01  
Chesterfield Twp. C-13

N.E. COR. Sec. 6, T.2N., R.14E

S.E. COR. Sec. 31, T.3N., R.14E

SELFIDGE PROPERTY



SET MONUMENT

WITNESSES

N. 56° E, 34.33 FT CUT "X"  
RIM OF VALVE AND WELL

S. 80° E, 91.60 FT. NW BOLT  
OF RAILWAY LIGHT

S. 39° E, 142.95 FT. NW BOLT  
OF RAILWAY LIGHT

N. 82° W, 371.36 FT. TOP  
CENTER OF FIRE-HND.

S. 68° W, 186.33 FT. SET  
MAG-NAIL & TAG IN ASPH.

Town 2 North Range 14 East

From Line

West Boundary

South Belman Range 13.74 E 5 2 N  
 40.00 Set to see post from which an  
 elm 12 in diam bears S 13 2 3 lbs  
 also elm 12 in diam S 1 2 2 1 lbs  
 46.50 Birch Oak 30 in diam  
 46.75 Intersceded P. Claims 17.20 East from post  
 sand level and not 2<sup>nd</sup> rail  
 Vint Birch Buck Gum Sugar harts

Surveyed 1818 by Wm Weston & S.

North Boundary

East Between Townships 24 & 25 Range 14 E  
 From Post on 12 33 N 13 41 E  
 From which a Birch 12 in diam bears  
 S 11 1 14 lbs dist also an Oak 4 in diam  
 bears S 12 E 7 lbs dist  
 47.2 Birch 36 in diam  
 48.00 Corner a Birch 10 in diam  
 47.23 Intersceded Birch Claims 5.0  
 74 North from set N 2 2 2 2 Set just for  
 post station 64 21 from which a Birch  
 1 in diam bears S 2 2 2 2 lbs also  
 a Sugar tree in bears S 2 2 2 2 lbs dist  
 Sand 3<sup>rd</sup> rail level's not  
 Vint Birch Buck Maple Gum  
 Birch 10

Surveyed 1818 by Wm Weston & S.

C-01  
E-13







B376415

LIBER 04686 PC041

LAND CORNER RECORDATION CERTIFICATE  
Filing Requirement of Act 74, Mich. P.A. 1970

RECORDED IN MACOMB COUNTY  
RECORDS AT: 1:15p. M.

JUL 19 1989

For corners in

Macomb County

Located In:

Corner Code #

- 1. Public Land Survey T 3 N R 14 E C-13 C-01
- T R
- T R
- T R
- 2. Property Controlling S T R
- in Section S T R
- 3. Miscellaneous S T R
- Property in Sec. S T R

*Edna M. ...*

CLERK - REGISTER OF DEEDS  
MACOMB COUNTY, MICHIGAN

Register of Deeds Stamp & File Number

- 4. Lot No. \_\_\_\_\_, Recorded Plat \_\_\_\_\_
- 5. Private Claims \_\_\_\_\_

	A	B	C	D	E	F	G	H	I	J	K	L	M
2	6	5	4	3	2	1							
3													
4	7	8	9	10	11	12							
5													
6	18	17	16	15	14	13							
7													
8	19	20	21	22	23	24							
9													
10	30	29	28	27	26	25							
11													
12	31	32	33	34	35	36							
13													

I, Donald A. Gorman, in a field survey on May 8, 19 89, do hereby certify that under requirements of P.A. 74, Michigan P.A. of 1970, the corner points mentioned in lines 1 and 2 above were in conformance with regulations and rules therefore as required in the current manual of survey instructions of the United States Department of the Interior, Bureau of Land Management or by a decree of a Court of Law and/or that the corner points mentioned in lines 3, 4 and 5 above were in conformance with the rules of the Michigan Board of Land Surveyors or by a Decree of a Court of Law, established, re-established, monumented, re-monumented, recovered, found as expressed below:

NOTE: Not more than 4 corners, all in the same town and range, may be recorded on this certificate.

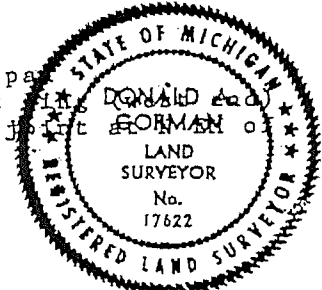
A. Description of original monument and accessories and/or subsequent restoration:

B. Description of corner evidence found and/or method applied in restoring or reestablishing corner:

C-13  
Found iron pin (boatspike) & ribbon in center line of old abandoned roadway.  
1214.84' to 3/4' iron pipe at east line of PC 144  
(East line of supervisors plat #8) L 18, Pg 19  
(1215.56' recorded)

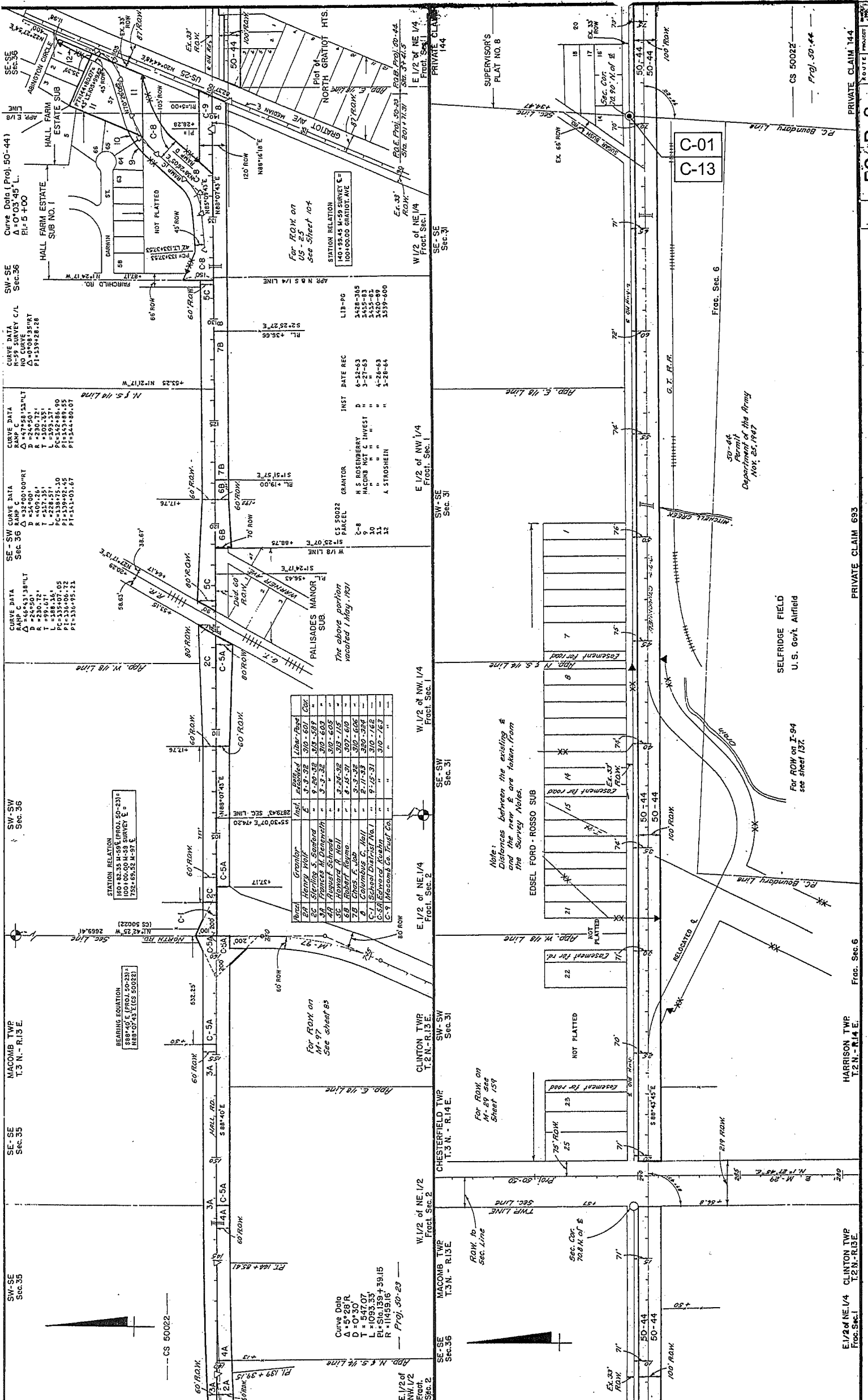
C. Description of monument for corner and accessories established to perpetuate locating the position of the corner:

C-13  
Boatspike in center line of old abandoned M-59 road bed  
S 85 E 83.32' chiseled "x" in sw bolt concrete light pipe  
S 45 E 54.50' chiseled "x" in top of concrete culvert  
S 10 E 60.30' MDOT reference cap & spike in pavement just east of Rosso Hwy.  
S 85 W 207.5' east corner post for fence gate



Signed by Donald A. Gorman Date June 7, 1989  
Surveyor's Michigan License No. 17622





Curve Data (Proj. 50-44)  
 $\Delta = 0^\circ 03' 45''$   
 $P = 5 + 00$   
 HALL FARM ESTATE  
 HALL SUB NO. 1

Curve Data  
 R-59 SURVEY C/L  
 NO CURVE  
 $\Delta = 0^\circ 08' 19''$   
 $P = 113.928726$

Curve Data  
 R-59 SURVEY C/L  
 NO CURVE  
 $\Delta = 0^\circ 08' 19''$   
 $P = 113.928726$

Curve Data  
 $\Delta = 166^\circ 53' 38''$   
 $D = 24^\circ 50'$   
 $A = 230.72'$   
 $T = 1537.35'$   
 $L = 2593.37'$   
 $PC = 338.75 + 10$   
 $PT = 336.06 + 72$   
 $P = 113.928726$

Curve Data  
 $\Delta = 166^\circ 53' 38''$   
 $D = 24^\circ 50'$   
 $A = 230.72'$   
 $T = 1537.35'$   
 $L = 2593.37'$   
 $PC = 338.75 + 10$   
 $PT = 336.06 + 72$   
 $P = 113.928726$

Curve Data  
 $\Delta = 5^\circ 28' R$   
 $D = 0^\circ 30'$   
 $T = 347.07'$   
 $R = 5033.39 + 15$   
 $P = 1165.916'$   
 Proj. 50-23

LIB-96  
 3428-365  
 3435-83  
 3437-43  
 3440-89  
 3442-89  
 3443-600

INST DATE REC  
 D 6-12-63  
 " 3-27-63  
 " 4-28-63  
 " 1-28-64

Parcel	Grantor	Inst.	Relinquished	Line-Book	Line-Page	CDX
20	Henry Wolf	9-8-32	9-8-32	310-601	601	601
21	Starling S. Starbuck	9-8-32	9-8-32	310-602	602	602
22	Frances M. Denevath	3-3-32	3-3-32	310-603	603	603
23	August Schreiner	3-24-32	3-24-32	310-605	605	605
24	Howard A. Hall	8-15-37	8-15-37	310-610	610	610
25	Robert Bayma	3-3-32	3-3-32	310-606	606	606
26	Chas. F. Judd	8-17-33	8-17-33	310-564	564	564
27	Columbus C. Hall	7-12-37	7-12-37	310-786	786	786
28	Edmond Kluska	7-12-37	7-12-37	310-786	786	786
29	Edmond Kluska	7-12-37	7-12-37	310-786	786	786
30	Edmond Kluska	7-12-37	7-12-37	310-786	786	786
31	Edmond Kluska	7-12-37	7-12-37	310-786	786	786
32	Edmond Kluska	7-12-37	7-12-37	310-786	786	786

STATION RELATION  
 LOCAL 50-231  
 100' 86.20' M-59 SURVEY  
 $\Delta = 752^\circ 55' 32''$   
 $P = 2669.41'$

BEARING EQUATION  
 LOCAL 50-231  
 $888^\circ 07' 43''$  (CS 50022)

For ROW on  
 US-25  
 See Sheet 104

STATION RELATION  
 140 9345 M-59 SURVEY  
 100' 100.00' GRATIOT AVE

For ROW on  
 M-29  
 See sheet 85

For ROW on  
 M-29  
 See Sheet 159

For ROW on  
 M-29  
 See Sheet 159

For ROW on  
 M-29  
 See Sheet 159

For ROW on  
 M-29  
 See Sheet 159

For ROW on  
 M-29  
 See Sheet 159

For ROW on  
 M-29  
 See Sheet 159

For ROW on  
 M-29  
 See Sheet 159

For ROW on  
 M-29  
 See Sheet 159

For ROW on  
 M-29  
 See Sheet 159

For ROW on  
 M-29  
 See Sheet 159

For ROW on  
 M-29  
 See Sheet 159

For ROW on  
 M-29  
 See Sheet 159

For ROW on  
 M-29  
 See Sheet 159

For ROW on  
 M-29  
 See Sheet 159

For ROW on  
 M-29  
 See Sheet 159

For ROW on  
 M-29  
 See Sheet 159

For ROW on  
 M-29  
 See Sheet 159

For ROW on  
 M-29  
 See Sheet 159

For ROW on  
 M-29  
 See Sheet 159

For ROW on  
 M-29  
 See Sheet 159

For ROW on  
 M-29  
 See Sheet 159

For ROW on  
 M-29  
 See Sheet 159

For ROW on  
 M-29  
 See Sheet 159

For ROW on  
 M-29  
 See Sheet 159

For ROW on  
 M-29  
 See Sheet 159

For ROW on  
 M-29  
 See Sheet 159

For ROW on  
 M-29  
 See Sheet 159

For ROW on  
 M-29  
 See Sheet 159

For ROW on  
 M-29  
 See Sheet 159

For ROW on  
 M-29  
 See Sheet 159

For ROW on  
 M-29  
 See Sheet 159

For ROW on  
 M-29  
 See Sheet 159

For ROW on  
 M-29  
 See Sheet 159

For ROW on  
 M-29  
 See Sheet 159

For ROW on  
 M-29  
 See Sheet 159

For ROW on  
 M-29  
 See Sheet 159

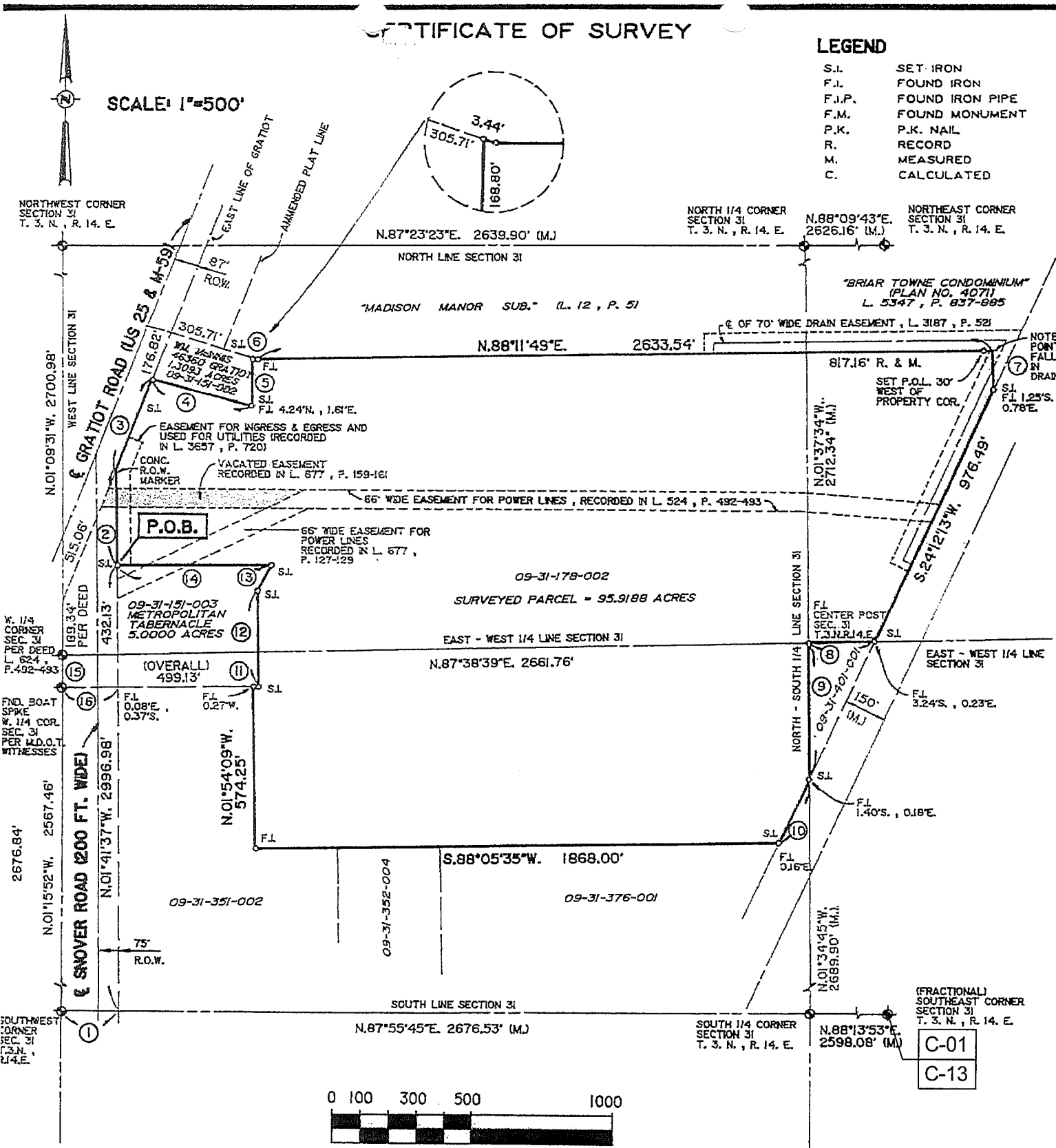
For ROW on  
 M-29  
 See Sheet 159

# CERTIFICATE OF SURVEY

## LEGEND

- S.I. SET IRON
- F.I. FOUND IRON
- F.I.P. FOUND IRON PIPE
- F.M. FOUND MONUMENT
- P.K. P.K. NAIL
- R. RECORD
- M. MEASURED
- C. CALCULATED

SCALE: 1"=500'



- |   |                           |                                 |
|---|---------------------------|---------------------------------|
| 1. N.87°55'45"E. 219.0' (R.) , 218.92' (M.) | 8. S.87°57'01"W. 235.50'  | 15. 109.38' C.                  |
| 2. N.01°41'37"W. 343.62'                    | 9. S.01°34'45"E. 485.58'  | 16. 200.00' R. ,199.68' C. & M. |
| 3. N.20°46'49"E. 338.10'                    | 10. S.24°12'13"W. 250.76' |                                 |
| 4. S.76°18'55"E. 367.00'                    | 11. N.89°37'15"E. 16.77'  |                                 |
| 5. N.00°05'44"E. 168.80'                    | 12. N.01°46'45"W. 339.94' |                                 |
| 6. S.74°10'47"E. 3.44'                      | 13. N.26°14'11"E. 104.05' |                                 |
| 7. S.01°35'14"E. 142.43'                    | 14. S.89°37'15"W. 547.36' |                                 |

BEARING BASE DIRECTLY RELATED TO M.D.O.T. R.O.W.  
 BEARING FOR I-94 EXPRESSWAY  
 ERROR OF CLOSURE = 1/376,515

I HEREBY CERTIFY THAT WE SURVEYED THE ABOVE DESCRIBED PROPERTY AND FOUND OR SET THE EXTERIOR BOUNDARIES AS SHOWN, THAT THE DRAWING IS A CORRECT REPRESENTATION OF THE LAND SURVEY, THAT THERE ARE NO ENCROACHMENTS ACROSS THE PROPERTY LINES, EXCEPT AS SHOWN, AND THAT THE SURVEY COMPLIES WITH THE ACCURACY REQUIREMENTS OF ACT 132, PUBLIC ACTS OF 1970.

RAYMOND J. DONNELLY R.L.S. NO. 21563

CLIENT:  
**MCS ASSOCIATES, INC.**  
 41150 TECHNOLOGY PARK DR.  
 SUITE 102  
 STERLING HEIGHTS, MICH. 48310-1642

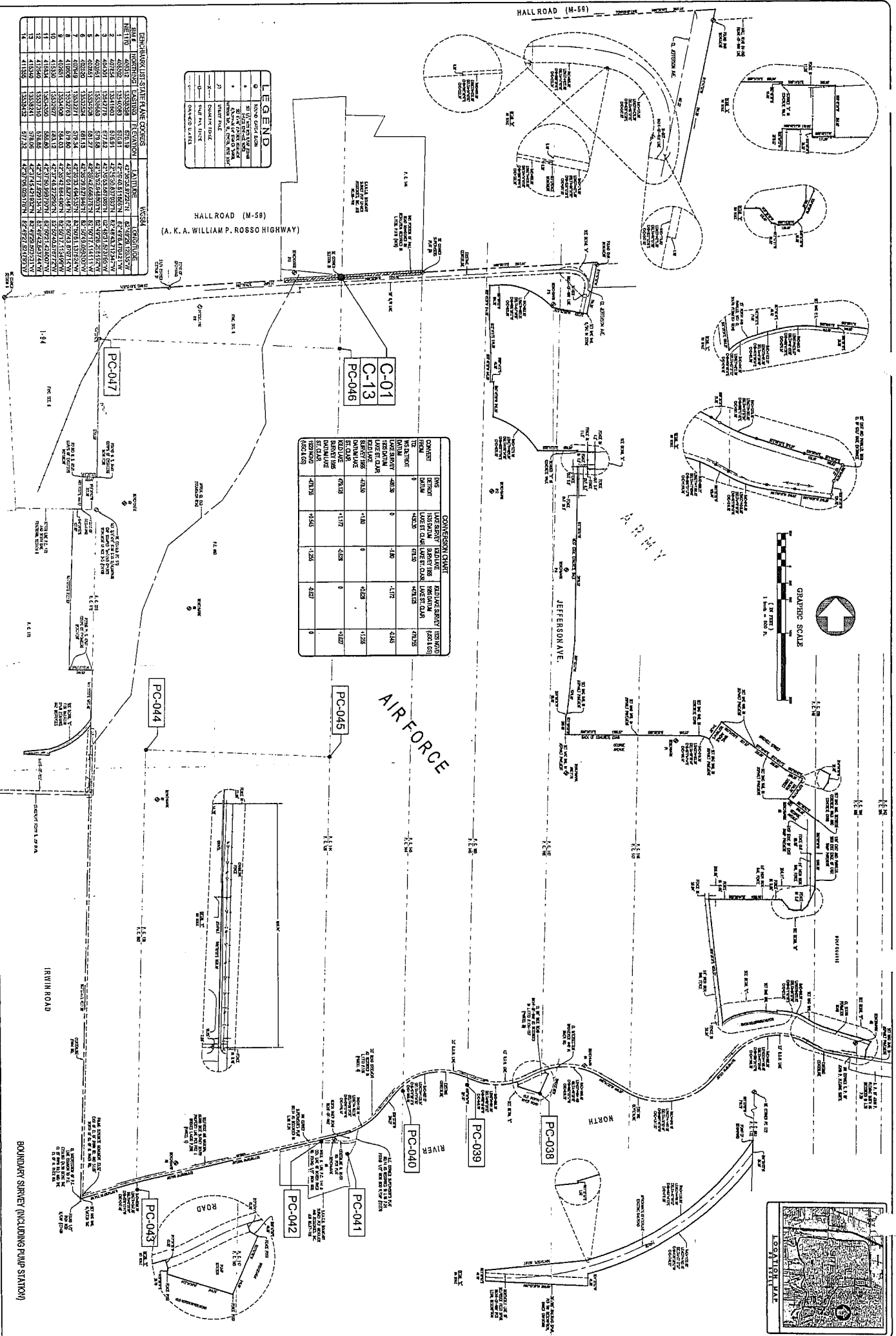
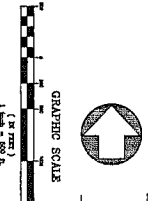
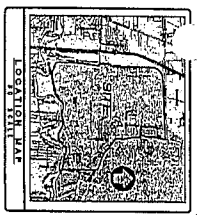


**Raymond J. Donnelly & Associates, Inc.**  
 Land Surveying • Mapping • Site Development Consultants  
 6915 Rochester Rd. • Suite 100      TEL (313) 879-8510  
 Troy, MI 48098-1259                      FAX 879-9129

REV. 7	DRWN BY L.J.
DATE 9-25-92	FIELD BOOK
SHEET NO. 1	PROJECT NO. 00000







**CONVERSION CHART**

CONVERT FROM	TO	CONVERSION FACTOR
DEGREES	DECIMAL DEGREES	0.0174532925
MINUTES	DECIMAL DEGREES	0.0002908889
SECONDS	DECIMAL DEGREES	0.0000048481
FEET	METERS	0.3048
INCHES	METERS	0.0254
POLE	METERS	3.048
ROD	METERS	1.65149378
CHAIN	METERS	20.1168
FURROW	METERS	201.168
MILE	METERS	1609.344
ACRES	SQUARE METERS	4046.856422
SQUARE FEET	SQUARE METERS	0.09290304
SQUARE INCHES	SQUARE METERS	6.4516E-05
CUBIC FEET	CUBIC METERS	0.0283168466
CUBIC INCHES	CUBIC METERS	1.6387E-05
TONS	KILOGRAMS	907.18474
POUNDS	KILOGRAMS	0.45359237
GRAINS	GRAMS	64.79891
DRY QUARTS	LITERS	0.236588237
LIQUID QUARTS	LITERS	0.250119146
GALLONS	LITERS	3.785411784
BARRELS	LITERS	163.659637
BARRELS	CUBIC METERS	0.163659637
BARRELS	CUBIC FEET	4.21683776
BARRELS	CUBIC INCHES	279.4128
BARRELS	CUBIC METERS	0.163659637
BARRELS	CUBIC FEET	4.21683776
BARRELS	CUBIC INCHES	279.4128

**LEGEND**

1	BOUNDARY LINE
2	ADJACENT PROPERTY
3	ADJACENT ROAD
4	ADJACENT RIVER
5	ADJACENT AIR FORCE
6	ADJACENT S.A.N.G. BASE
7	ADJACENT PUMP STATION
8	ADJACENT IRWIN ROAD
9	ADJACENT RIVER
10	ADJACENT AIR FORCE
11	ADJACENT S.A.N.G. BASE
12	ADJACENT PUMP STATION
13	ADJACENT IRWIN ROAD
14	ADJACENT RIVER
15	ADJACENT AIR FORCE
16	ADJACENT S.A.N.G. BASE
17	ADJACENT PUMP STATION
18	ADJACENT IRWIN ROAD
19	ADJACENT RIVER
20	ADJACENT AIR FORCE
21	ADJACENT S.A.N.G. BASE
22	ADJACENT PUMP STATION
23	ADJACENT IRWIN ROAD
24	ADJACENT RIVER
25	ADJACENT AIR FORCE
26	ADJACENT S.A.N.G. BASE
27	ADJACENT PUMP STATION
28	ADJACENT IRWIN ROAD
29	ADJACENT RIVER
30	ADJACENT AIR FORCE

**DEPARTMENTS SYSTEM LINE POINTS**

POINT NO.	EASTING	NORTHING	BEARING	DISTANCE
1	425000.00	410000.00	0.0000	0.00
2	425000.00	410000.00	0.0000	0.00
3	425000.00	410000.00	0.0000	0.00
4	425000.00	410000.00	0.0000	0.00
5	425000.00	410000.00	0.0000	0.00
6	425000.00	410000.00	0.0000	0.00
7	425000.00	410000.00	0.0000	0.00
8	425000.00	410000.00	0.0000	0.00
9	425000.00	410000.00	0.0000	0.00
10	425000.00	410000.00	0.0000	0.00
11	425000.00	410000.00	0.0000	0.00
12	425000.00	410000.00	0.0000	0.00
13	425000.00	410000.00	0.0000	0.00
14	425000.00	410000.00	0.0000	0.00
15	425000.00	410000.00	0.0000	0.00
16	425000.00	410000.00	0.0000	0.00
17	425000.00	410000.00	0.0000	0.00
18	425000.00	410000.00	0.0000	0.00
19	425000.00	410000.00	0.0000	0.00
20	425000.00	410000.00	0.0000	0.00
21	425000.00	410000.00	0.0000	0.00
22	425000.00	410000.00	0.0000	0.00
23	425000.00	410000.00	0.0000	0.00
24	425000.00	410000.00	0.0000	0.00
25	425000.00	410000.00	0.0000	0.00
26	425000.00	410000.00	0.0000	0.00
27	425000.00	410000.00	0.0000	0.00
28	425000.00	410000.00	0.0000	0.00
29	425000.00	410000.00	0.0000	0.00
30	425000.00	410000.00	0.0000	0.00

DATE: 05/11/04  
 SCALE: 1" = 500'  
 JOB NUMBER: 03-132  
 SHEET NUMBER: 1 OF 3  
 CLIENT: S.A.N.G. BASE  
 PROJECT: BOUNDARY SURVEY (INCLUDING PUMP STATION)  
 SURVEYOR: S.A.N.G. BASE  
 CHECKED BY: [Signature]  
 DRAWN BY: [Signature]  
 BOOK NO.: [Blank]  
 PAGE NO.: [Blank]

REC'D MACOMB CO 11 DEC 15 AM 08:23

LAND CORNER RECORDATION CERTIFICATE
Filing Requirement of Act 74, Mich. P.A. 1970
REMONUMENTATION CORNER

For corners in:

MACOMB COUNTY
(County)

Located In: CHESTERFIELD TOWNSHIP Corner Code # B-13
HARRISON TOWNSHIP B-01

1237155
LIBER 21034 PAGE 641
12/15/2011 08:39:38 A.M.
MACOMB COUNTY, MI SEAL
CARMELLA SABAUGH, REGISTER OF DEEDS

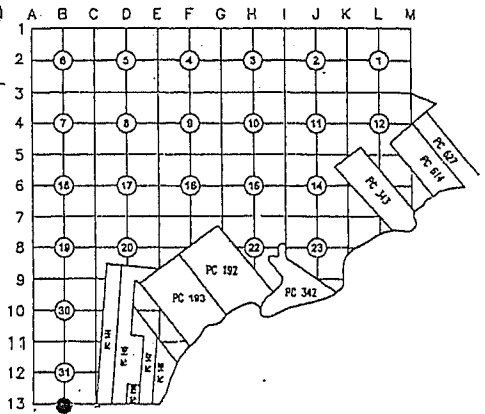
- 1. Public Land Survey S 31 T 3N R 14E
S 6 T 2N R 14E
2. Property Controlling S T R
in Section S T R
3. Miscellaneous S T R
Property in Sec. S T R

4. Lot No. Recorded Plat

5. Private Claims

ACCEPTED BY THE MACOMB COUNTY SURVEY PEER
GROUP AS THE OFFICIAL CORNER UNDER MICHIGAN
PUBLIC ACT 345 OF 1990 AT A MEETING HELD
ON 9-27-2011
MARTIN C. DUNN, P.S. CHAIRMAN

Register of Deeds Stamp & File
Number



I, ROBERT E. HORNYAK, in a field survey on, June 18, 2011 do hereby certify that under requirements
of P.A. 74, Michigan P.A. of 1970, the corner points mentioned in lines 1 and 2 above were in
conformance with regulations and rules therefore as required in the current manual of survey instructions of
the United States Department of the Interior, Bureau of Land Management or by a decree of a Court of Law
and/or that the corner points mentioned in lines 3, 4 and 5 above were in conformance with the rules of the
Michigan Board of Land Surveyors or by a Decree of a Court of Law; established, re-established,
monumented, re-monumented, recovered, found as expressed below:

NOTE: Not more than 2 corners, all in the same town and range, may be recorded on this certificate.

A. Description of original monument and accessories and/or subsequent restoration:

- 1 1817 GLO notes Preston B Oak 10" diameter
Subsequent Restorations:
2 1817 Township map Preston Object not stated
3 1818 Township map Surveyor General Office Object not stated
4 1853 Survey Morgan Object not stated
5 Private Claims map Object not stated
6 Private Claims map Object not stated
7 1934 Witness sheet MCRC 2" Oak stake 2" below surface (0 of 3 wit. fnd.)
8 1956 Plat-Edsel Ford-Rosso Subdivision
Phillips 1728 L38, P13 Corner shown, not described.
MCRC 1" Iron Rod (0 of 3 wit. fnd.)
9 1959 Witness sheet Gorman 17622 L4686, P40 1" dia. iron pin (0 of 7 wit. fnd.)
10 1989 LCRC Donnelly 21563 unrecorded Object not stated
11 1992 Certificate of Survey Hein 43056 L9200, P552 Placed 1/2" Rerod, at the location of the corner
prior to road construction. (3 of 4 wit. fnd.)
12 1999 LCRC Kosicki 43058 unrecorded Found iron #24615 (2 of 3 wit. fnd.)
13 2003 Survey

B. Description of corner evidence found and/or method applied in restoring or reestablishing corner:

The corner was perpetuated with the found 1/2" iron rod.
Occupation: N, S - none
E, W - median for divided Highway
The witnesses from Items 12 & 13, the distances from Items 8, 10, 11 & 13 were used to verify the location of the corner.
I recommend to the Peer Review Board to accept the found 1/2" iron rod as proper location for the corner.

Distances:

Table with columns for distances between corners B-13 to B-12, B-13 to C-13, and B-13 to A-13. Includes values like 2689.90', 2598.08', 2676.58', etc.

C. Description of monument for corner and accessories established to perpetuate locating the position of the corner:

I replaced the found 1/2" iron with a 2" aluminum cap stamped "MACOMB COUNTY MONUMENT MI ACT 345; B-01, B-13; 44286" placed on a 1/2"x36"
steel bar encased in 4" diameter concrete monument.

Witnesses:

- N39°E 24.19' Set iron w/blue cap "MACOMB COUNTY WITNESS" at S side of traffic signal base pole
S10°E 35.42' Set iron w/blue cap "MACOMB COUNTY WITNESS" at back of curb
S48°W 76.21' Set iron w/blue cap "MACOMB COUNTY WITNESS" on E side of S'ly leg of "LEFT 2
LANES MUST TURN LEFT" sign
N54°W 71.83' Set nail w/tag "MACOMB COUNTY WITNESS TAG" in S'ly painted white line of Westbound
Hall Road

THE SELECTED LOCATION IS ACCEPTED BY ME AND IS GENERALLY ACCEPTED BY PROFESSIONAL SURVEYORS AS THE BEST
AVAILABLE EVIDENCE OF THE POSITION OF THIS CORNER.

Signed by [Signature] Date September 28, 2011.

Surveyor's Michigan License No. 44286