

LAND CORNER RECORDATION CERTIFICATE

Filing Requirement of Act 74, Mich. P.A. 1970

RECORDED IN MACOMB COUNTY
RECORD AT 8:30 A.M.

DEC 28 1993

Clerr - R. J. Decker
CLERK - REGISTER OF DEEDS
MACOMB COUNTY, MICHIGAN

Register of Deeds Stamp & File Number

For corners in

MACOMB

(County)

Located In:

Chesterfield Township

Corner Code //

- 1. Public Land Survey T 3N R 14E B-9
- T _____ R _____
- T _____ R _____
- T _____ R _____
- 2. Property Controlling S _____ T _____ R _____
- in Section S _____ T _____ R _____
- 3. Miscellaneous S _____ T _____ R _____
- Property in Sec. S _____ T _____ R _____
- 4. Lot No. _____, Recorded Plat _____
- 5. Private Claims _____

I, Shelby W. Money, in a field survey on November 18, 1993, do hereby certify that under requirements of P.A. 74, Michigan P.A. of 1970, the corner points mentioned in lines 1 and 2 above were in conformance with regulations and rules therefore as required in the current manual of survey instructions of the United States Department of the Interior, Bureau of Land Management or by a decree of a Court of Law and/or that the corner points mentioned in lines 3, 4 and 5 above were in conformance with the rules of the Michigan Board of Land Surveyors or by a Decree of a Court of Law; established, re-established, monumented, re-monumented, recovered, found as expressed below:

NOTE: Not more than 4 corners, all in the same town and range, may be recorded on this certificate.

A. Description of original monument and accessories and/or subsequent restoration:

GLO POST, NO WITNESSES REMAIN

LCRC (1977) L. 2862 P. 854 STONEROCK #13601
SET RAILROAD SPIKE WITH CUT
N 77° 46' 20" W 71.60' PK SOUTH FACE POWER POLE
S 34° 12' 40" E 75.38' NE CORNR CONC BLOCK FND N
S 01° 14' 20" E 28.59' NAIL/TIN W FACE 14" MAPLE
S 47° 32' W 98.79' NW CORNR CONC BLOCK FND N

LCRC (1988) L. 4487 P. 201 GORNAN #17622
FOUND R/8" RECORDED 8" BELOW SURFACE
S 05° W 28.06' 25" MAPLE
N 88° W 73.22' POWER POLE
NORTH 39.09' 11" CATALPA
N 75° E 88.06' POWER POLE

LCRC (1979) L. 3055 P. 820 SMITH #16052
FOUND 5/8" IRON, 10" DEEP / SET 4" ROD ON TOP
SOUTH 28.00' PK IN 15" MAPLE
N 80° E 98.10' PK IN POWER POLE
N 75° W 73.25' PK IN POWER POLE
** (FOUND RAILROAD SPIKE 0.40' NORTH AND 1.50' WEST OF TRUE CORNER)

LCRC (1990) L. 4490 P. 164 STEVEDANN #28408
FOUND PK NAIL
EAST 1.63' FOUND 1" ROD IN MONUMENT BOX
S 39° E 75.38' NE CORNR CONC BLOCK FOUNDATION
SOUTH 28.44' NAIL/WASHER WEST SIDE 18" MAPLE

LCRC (1991) L. 5024 P. 940 DeDECKER #8386
FOUND PK NAIL
AZ EAST 1.63' FOUND 5/8" ROD IN MONUMENT BOX
AZ 91° 07' 08" PK W/SDA TAG IN NW FACE U/B
AZ 151° 75' 42" NE CORNR OF HST #26000 CONC BLK
AZ 183° 28' 43" NAIL W/ADOT TAG W FACE 30" MAPLE
AZ 223° 54' 87" PK W/SDA TAG SE FACE 12" MAPLE
AZ SOUTH 13.64' FND 1/2" IRON ROD @ EDGE ASPHALT

	A	B	C	D	E	F	G	H	I	J	K	L	M
2	6		5		4		3		2				
3													
4	7		8		9		10		11		12		
5													
6	18		17		16		15		14		13		
7													
8	19		20		21		22		23		24		
9													
10	30		29		28		27		26		25		
11													
12	31		32		33		34		35		36		
13													

B. Description of corner evidence found and/or method applied in restoring or reestablishing corner:

B-9 FOUND IRON IN MONUMENT BOX
FOUND PK'NAIL 1.63' WEST AND SLIGHTLY NORTH OF IRON IN MONUMENT BOX

PK'NAIL IS CORRECT CORNER
THIS CORNER VERIFIED BY:
CERTIFICATE OF SURVEY LIBER 3057 PAGE 155
SUPERVISOR'S PLAT OF FRASERS PATTON ROAD PLACE SUBDIVISION LIBER 23 PAGE 36

FOUND RAILROAD SPIKE BELOW PK NAIL

C. Description of monument for corner and accessories established to perpetuate locating the position of the

B-9 REMOVE PK NAIL AND RAILROAD SPIKE AND REPLACE WITH 3/4" BAR AND MACOMB REMONUMENTATION MARKER #30092 IN MONUMENT BOX
WITNESSES:
S 30° W 75.42' FOUND NORTHEAST CORNER OF CONCRETE BLOCK AT HOUSE #26000
S 05° W 28.43' FOUND NAIL W/MDOT TAG IN WEST FACE OF A 30" MAPLE TREE
S 55° W 54.87' FOUND PK'NAIL W/SDA TAG IN THE SOUTHEAST FACE OF A 12" MAPLE TREE
SOUTH 13.64' FOUND 1/2" REBAR JUST SOUTH OF THE EDGE OF PAVEMENT
S 45° W 98.79' FOUND NORTHWEST CORNER OF CONCRETE BLOCK FOUNDATION

The selected location is accepted by me and is generally accepted by Professional Surveyors as the best available evidence of the position of the original corner.

Signed by Shelby W. Money Date 12/14/93
Surveyor's Michigan License No. 30092

ACCEPTED BY THE MACOMB COUNTY SURVEY PIER GROUP AS THE OFFICIAL CORNER UNDER MICHIGAN PUBLIC ACT 345 1990 AT A MEETING HELD ON 12-15-93.

Frank J. Decker
FRANK J. DeDECKER, P.S., PE, CHAIRMAN

SHELBY W. MONEY
PROFESSIONAL SURVEYOR
No. 30092
LICENSED PROFESSIONAL SURVEYOR

MACOMB COUNTY REMONUMENTATION

CORNER # B-9 T 3 N - R 14 E CHESTERFIELD TOWNSHIP
COMMON DESCRIPTION S. 1/4 POST SECTION 19

RECORDS RESEARCH

(refer to date, Liber & Page, source, map #, etc.)

ACT 74 RECORDED FORMS -

L.2862	P.854	Stonerock	(1977)	Set railroad spike
L.3055	P.820	Smith	(1979)	Found 5/8" iron deep set, set 1" rod up
L.4487	P.201	Gorman	(1988)	Found 5/8" rod, set monument box
L.4490	P.164	Steve Dunn	(1990)	Found pk'nail matching Stonerock
L.5024	P.940	DeDecker	(1991)	Found pk'nail matching Stonerock

ACT 132 RECORDED FORMS -

GLO NOTES -

Map

DEEDS -

None

UNRECORDED INFORMATION -

Anderson, Eckstein & Westrick, Inc. work area

ROAD COMMISSION INFORMATION -

TAX MAPS -

9-19F 9-19G 9-30B 9-30C

MACOMB COUNTY REMONUMENTATION

CORNER # B-9 T 3 N - R 14 E CHESTERFIELD TOWNSHIP
COMMON DESCRIPTION S. 1/4 POST SECTION 19

FIELD RESEARCH

{Aew field book #1193 / page 10}

SITE CONDITIONS (TYPE OF ROADWAY, FIELD, SWAMP, ETC.) -
Asphalt road

RECORDED EVIDENCE OF CORNER -

L.C.R.C.	L.2862	P.854	L.C.R.C.	L.3055	P.820
L.C.R.C.	L.4487	P.201	L.C.R.C.	L.4490	P.164
L.C.R.C.	L.5024	P.940			

Supervisor's Plat of Frasers Pattow Road Place L.23 P.36

FOUND EVIDENCE OF CORNER AND CONDITION -

Iron in monument box
pk'nail 1.63' west, slightly north
Believe pk'nail is correct corner

FOUND RECORDED WITNESSES -

L.C.R.C.	L.2862	P.854:	<u>pk'nail position</u>
N 75° W	71.60'		pk'nail in utility pole
S 35° E	75.38'		northeast corner of house
S 45° W	98.79'		northwest corner of house

L.C.R.C.	L.5024	P.940:	<u>pk'nail position</u>
East	1.63'		5/8" iron in monument box
Az 151°	75.42'		northeast corner of house
Az 183°	28.43'		MDOT tag in 12" Maple
Az 223°	54.87'		pk'nail w/SDA tag in 12" Maple
South	13.64'		1/2" rod along edge of road

L.C.R.C.	L.3055	P.820:	<u>5/8" rod position</u>
South	28.00'		pk'nail in 15" Maple
N 75° E	73.25'		pk'nail in utility pole
Found railroad spike 0.40' north and 1.60' west			

L.C.R.C.	L.4487	P.201	<u>5/8" rod position</u>
S 05° W	28.06'		25" maple
N 80° W	73.22'		power pole

Field Research Continued for:

**CORNER # B-9 T 3 N - R 14 E CHESTERFIELD TOWNSHIP
COMMON DESCRIPTION S. 1/4 POST SECTION 19**

FOUND EXISTING OCCUPATION -

Centerline of road
Match subdivision to south
Supervisor's Plat of Frasers Pattow Road Subdivision

SET NEW WITNESSES -

East	1.63'	5/8" rod in monument box
S 30° E	75.42'	northeast corner of concrete block at house #26000
S 05° W	28.43'	nail w/MDOT tag in west face of a 30" Maple tree
S 55° W	54.87'	pk'nail w/SDA tag in the southeast face of a 12" Maple tree
South	13.64'	1/2" rebar just south of edge of pavement
S 45° W	98.79'	northwest corner of concrete block foundation

MEASURED REFERENCES -

LAND CORNER RECORDATION CERTIFICATE

FILING REQUIREMENT OF ACT 74, MICH. P.A. 1970

CHESTERFIELD TWP., MACOMB CO.
 FOR CORNERS OF: LOCATED IN: CORNER CODE NUMBER

1. PUBLIC LAND SURVEY: T 3 X B 14 K A-9; B-9

2. PROPERTY CONTROL: _____

3. MISCELLANEOUS PROPERTY IN SECTION: _____

4. LOT NO. _____, RECORDED PLAT _____

5. PRIVATE CLAIMS _____

A454053

RECORDED IN MACOMB COUNTY RECORDS AT: 11:45 AM
 OCT - 7 1977
Edna J. ...
 CLERK - REGISTER OF DEEDS
 MACOMB COUNTY, MICHIGAN
 REGISTER OF DEEDS STAMP AND FILING NUMBER

I, Gary R. Stonerock do hereby certify that under requirements of P.A. 74, Michigan P.A. of 1970, the corner points mentioned in lines 1 and 2 above were, in a field survey on September 26, 1977, established, re-established, monumented, re-monumented, recovered or restored as expressed below and in conformance with regulations and rules thereto as required in the current manual of survey instructions of the United States Department of the Interior, Bureau of Land Management or by a decree of a court of law. Furthermore, that the corner points mentioned in lines 3, 4 and 5 above were, in a field survey on _____, 19___, found, recovered, restored, established or re-established as expressed below and in conformance with the rules of the Michigan State Board of Registration for Land Surveyors or, by a Decree of a Court of law:

A. Description of original monument and accessories and/or subsequent restoration:

- A-9; set railroad spike with cut 'X'
- B-9; set railroad spike with cut 'X'

B. Description of corner evidence found and/or method applied in restoring or re-establishing corner:

- SET RAILROAD SPIKES
- A-9; Re-established N.W. Section corner of Section 30 using the ties indicated on the "RANCH ACRES" subdivision (see attached drawing: # 1951-D, 2 sheets).
 - B-9; Re-established the N. 1/4 corner of Section 30 using the ties indicated on the "SUPERVISOR'S PLAT No. 19", "REPLAT OF LOTS 3 thru 6" (see attached drawing: # 1951-D, 2 sheets).

C. Description of monument for corner and accessories established to perpetuate locating the position of the corner:

- SET RAILROAD SPIKES
- A-9; N 0°05' W, 44.53'; P.K. nail in W. side of power pole
 S 55°14'50" E, 68.38'; nail & tin in N. side of 12" apple tree
 S 26°53' W, 26.86'; nearest face of corner metal fence post
 - B-9; N 77°46'20" W, 71.60'; P.K. nail in S. side of power pole
 S 34°12'40" E, 75.38'; N.E. corner of conc. block foundation
 S 1°14'20" E, 28.59'; nail & tin in W. side of 14" maple tree
 S 47°32' W, 98.79'; N.W. corner of conc. block foundation

SIGNED BY: *Gary R. Stonerock* DATE: October 5, 1977

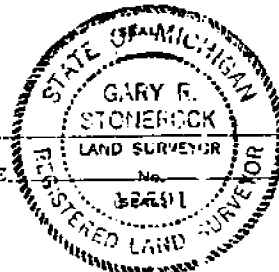
SURVEYOR'S MICHIGAN REGISTRATION NO 13601

FOR STATE AND UNITED STATES AGENCIES:

SIGNED BY: _____ DATE: _____
CHIEF OF SURVEY PARTY

APPROVED AND SIGNED BY: _____ DATE: _____
MICHIGAN REGISTERED LAND SURVEYOR

SURVEYOR'S MICHIGAN REGISTRATION NO 13601



FORM APPROVED BY MICHIGAN STATE BOARD OF REGISTRATION, JAN. 28, 1971
 REVISED MAY 14, 1975

MAY PLACE SKETCH ON BACK OR ATTACHED SHEET

Handwritten mark

00646

LAND CORNER RECORDATION CERTIFICATE

FILING REQUIREMENT OF ACT 74, MICH. P.A. 1970

Chesterfield Township, Macomb County, Michigan

FOR CORNERS OF: S. 1/2 LOCATED IN: Sec. 19 CORNER CODE NUMBER

1. PUBLIC LAND SURVEY: T. 3 S. R. 14 E. S. 1/4 post B-9

2. PROPERTY CONTROLLING IN SECTION: T. F S. R. E. _____

3. MISCELLANEOUS PROPERTY IN SECTION: T. L S. R. E. _____

4. LOT NO. _____, RECORDED PLAT _____

5. PRIVATE CLAIMS _____

A555930

RECORDED IN MACOMB COUNTY RECORDS AT: 8:30a JAN 15 1979

Edna H. Smith
 CLERK - REGISTER OF MACOMB COUNTY, MICH.
 REGISTER OF DEEDS STAMP AND FILING NUMBER

I, Robert L. Smith do hereby certify that under requirements of P.A. 74, Michigan P.A. of 1970, the corner points mentioned in lines 1 and 2 above (identified with circles on index code diagram - over) were, in a field survey on July 1978, established, re-established, monumented, re-monumented, recovered or restored as expressed below and in conformance with regulations and rules therefore as required in the current manual of survey instructions of the United States Department of the Interior, Bureau of Land Management or by a decree of a court of law. Furthermore, that the corner points mentioned in lines 3, 4 and 5 above were, in a field survey on _____ 19____, found, recovered, restored, established or re-established as expressed below and in conformance with the rules of the Michigan State Board of Registration for Land Surveyors or, by a Decree of a Court of law:

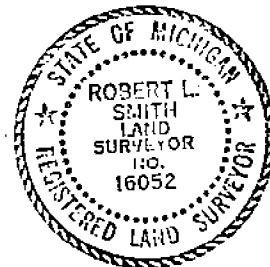
A. Description of original monument and accessories and/or subsequent restoration:

B. Description of corner evidence found and/or method applied in restoring or re-establishing corner:

B-9 - Found 5/8" iron, 10" deep
 Set 1" rod on top

C. Description of monument for corner and accessories established to perpetuate locating the position of the corner:

B-9
 From South 28.0 ft. - P.K. nail in 15" maple
 N. 80° E. 88.10 ft. - P.K. nail in power pole
 From N. 75° W. 73.25 ft. - P.K. nail in power pole
 (Found R.R. spike 0.40 ft. North and 1.60 ft. West of True corner)



SIGNED BY: Robert L. Smith DATE: 11-22-78
 SURVEYOR'S MICHIGAN REGISTRATION NO. 16052 (SEAL)

FOR STATE AND UNITED STATES AGENCIES:

SIGNED BY: _____ DATE: _____
CHIEF OF SURVEY PARTY
 APPROVED AND SIGNED BY: _____ DATE: _____
MICHIGAN REGISTERED LAND SURVEYOR (SEAL)

SURVEYOR'S MICHIGAN REGISTRATION NO. _____

00818

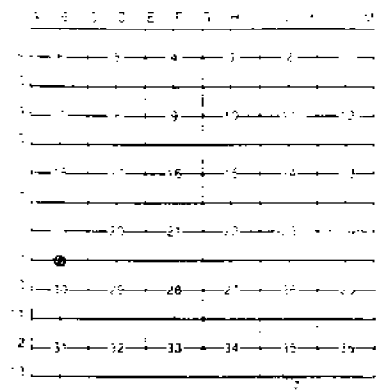
5

LAND CORNER RECORDATION CERTIFICATE
Filing Requirement of Act 74, Mich. P.A. 1970

Corner	Location	Corner Description
1	201	14 E 3-9
2		
3		
4		
5		
6		
7		
8		
9		
10		
11		
12		
13		
14		
15		
16		
17		
18		
19		
20		
21		
22		
23		
24		
25		
26		
27		
28		
29		
30		
31		
32		
33		
34		
35		
36		
37		
38		
39		
40		
41		
42		
43		
44		
45		
46		
47		
48		
49		
50		

Register of Deeds Stamp & File Number

1. Plat No. _____ Recorded Plat _____
2. Private Claims _____



I hereby certify that under requirements of P.A. 74, Michigan P.A. of 1970, the corner points mentioned in lines 1 and 2 above were in conformance with regulations and rules thereto as required in the current manual of survey instructions of the United States Department of the Interior, Bureau of Land Management or by a decree of a Court of Law and/or that the corner points mentioned in lines 3, 4 and 5 above were in conformance with the rules of the Michigan Board of Land Surveyors or by a Decree of a Court of Law established, re-established, monumented, re-monumented, recovered, found as expressed below:

NOTE: Not more than 4 corners, all in the same town and range, may be recorded on this certificate.

A. Description of original monument and accessories and/or subsequent restoration:

RECORDED IN MACOMB COUNTY
RECORDS AT: 3:38 P.M.
AUG 8 1988

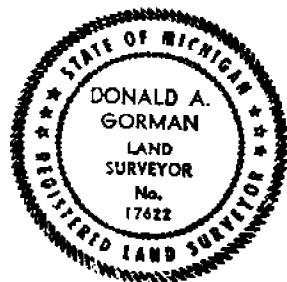
Donald A. Gorman
CLERK OF THE COUNTY RECORDS
MACOMB COUNTY, MICHIGAN

B. Description of corner evidence found and/or method applied in restoring or reestablishing corner:

Found 5/8" rerod 8" below surface, from witnesses recorded in 1978 by Robert Smith, LLS 16052, L. 3055 Pg 820 (most recent recordation:
SOUTH 28.0' PK nail in 15" maple
N 80 E 88.10' PK nail in power pole
N 75 W 73.25' PK nail in power pole

C. Description of monument for corner and accessories established to perpetuate locating the position of the corner:

Set monument box at rod.
S 05 W 28.06' 25" Maple
N 80 W 73.22' Power Pole
NORTH 39.09' 11" Catalpa
N 75 E 88.06' Power Pole



Signed by Donald A. Gorman Date Aug 8, 1988
MICH. DEPT. OF TRANS. #17622
Surveyor's Michigan License No. _____

01376

LAND CORNER RECORDATION CERTIFICATE
Filing Requirement of Act 74, Mich. P.A. 1970

For corners in

Macomb County

Located in Chesterfield Corner Code ---

1	Public Land Survey	T	3N	R	14E	B-8
		T	3N	R	14E	B-9
		T	3N	R	14E	A-9
		T		R		
2	Property Controlling in Section	S		T	R	
		S		T	R	
3	Miscellaneous Property in Sec.	S		T	R	
		S		T	R	

RECORDED IN MACOMB COUNTY RECORDS AT: 11:25 A.M.

NOV - 8 1990

Ed
CLERK - REGISTER OF DEEDS
MACOMB COUNTY, MICHIGAN

Register of Deeds Stamp & File Number

4 Lot No. _____, Recorded Plat _____
5 Private Claims _____

A	B	C	D	E	F	G	H	I	J	K	L	V
6	5	4	3	2	1							
7	8	9	10	11	12							
13	14	15	16	17	18							
19	20	21	22	23	24							
25	26	27	28	29	30							
31	32	33	34	35	36							

I, Steven E. Dunn, in a field survey on April 15, 16 & 30, 19 90 do hereby certify that under requirements of P.A. 74, Michigan P.A. of 1970, the corner points mentioned in lines 1 and 2 above were in conformance with regulations and rules therefore as required in the current manual of survey instructions of the United States Department of the Interior, Bureau of Land Management or by a decree of a Court of Law and/or that the corner points mentioned in lines 3, 4 and 5 above were in conformance with the rules of the Michigan Board of Land Surveyors or by a Decree of a Court of Law, established, re-established, monumented, re-monumented, recovered, found as expressed below

NOTE: Not more than 4 corners, all in the same town and range, may be recorded on this certificate.

A. Description of original monument and accessories and/or subsequent restoration:

- B-8 Set 1/2" I. Rod Cap # 30081
Established N. - S 1/4 Line & E - W 1/4 Line and Set
At the Intersection of Same
- B-9 Fd. P.K. Nail
- A-9 Fd. Railroad Spike

B. Description of corner evidence found and/or method applied in restoring or reestablishing corner:



C. Description of monument for corner and accessories established to perpetuate locating the position of the corner:

- B-8 Center Post
Set 1/2" I. Rod Cap #30081
 - 1) North - 6.26; Fd. Conc. Mon.
 - 2) NE - 92.81; Fd. P.K. Nail in W. Face Of Utility Pole
 - 3) ENE 20.15; Set P.K. Nail In S.E. Face Utility Pole
 - 4) East - 33.08; Cut "+" @ 8/C At Curb Cut
- B-9 S. 1/4 Cor.
Fd. P.K. Nail
 - 1) East - 1.63; Fd. I. Rod in Mon. Box.
 - 2) S.35°E - 75.38; N.E. Cor. Conc. Block Foundation
 - 3) South - 28.44; Nail & washer In W. side of 18" Maple
- A - 9 SW Sec. Cor.
Fd. Railroad Spike
 - 1) North - 44.58'; Fd. P.K. Nail In W. Side of Utility Pole.
 - 2) S.55°E. - 67.97; Fd. Nail & Washer in N. Side of 12' Apple Tree
 - 3) S.30°W. - 26.94; Nearest Face of Corner Metal Fe Post
 - 4) N.50°E - 31.52; CTN of Fire Hydrant

Signed by Steven E. Dunn
Surveyor's Michigan License No. 28401

Date 5-15-1990

LAND CORNER RECORDATION CERTIFICATE
Filing Requirement of Act 74, Mich. P.A. 1970

For corners in
Macomb
(County)

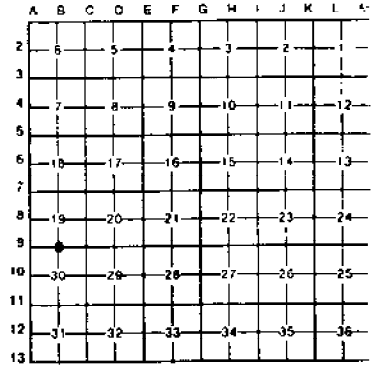
Located In: Corner Code #

- 1. Public Land Survey T 3N R 14E B-9
2. Property Controlling in Section S T R
3. Miscellaneous Property in Sec. S T R

RECORDED IN MACOMB COUNTY
RECORDS AT: 11:10A
JAN 11 1991

CLERK - REGISTER OF DEEDS
MACOMB COUNTY, MICHIGAN
Register of Deeds Stamp File Number

- 4. Lot No. Recorded Plat
5. Private Claims



Chesterfield Township

I, Frank J. DeDecker, in a field survey on November 21, 1990
do hereby certify that under requirements of P.A. 74, Michigan P.A. of 1970, the corner points mentioned
in lines 1 and 2 above were in conformance with regulations and rules theretore as required in the
current manual of survey instructions of the United States Department of the Interior, Bureau of Land
Management or by a decree of a Court of Law and/or that the corner points mentioned in lines 3, 4 and 5
above were in conformance with the rules of the Michigan Board of Land Surveyors or by a Decree of a
Court of Law; established, re-established, monumented, re-monumented, recovered, found as
expressed below:

NOTE: Not more than 4 corners, all in the same town and range, may be recorded
on this certificate.

A. Description of original monument and accessories and/or subsequent restoration:

- B-9 Set railroad spike
N.77°46'20"W., 71.60', P.K. nail in south side of power pole
S.34°12'40"E., 75.38', NE corner of concrete block foundation
S.01°14'20"E., 28.59', nail & tin in west side of 14" maple tree
S.47°32'00"W., 98.79, NW corner of concrete block foundation
Land corner recordation certificate L.2862, P.854 Macomb Co. Records

B. Description of corner evidence found and/or method applied in restoring or reestablishing corner:

- B-9 Found P.K. nail @ approx. Q of 22 Mile Rd. from above witnesses

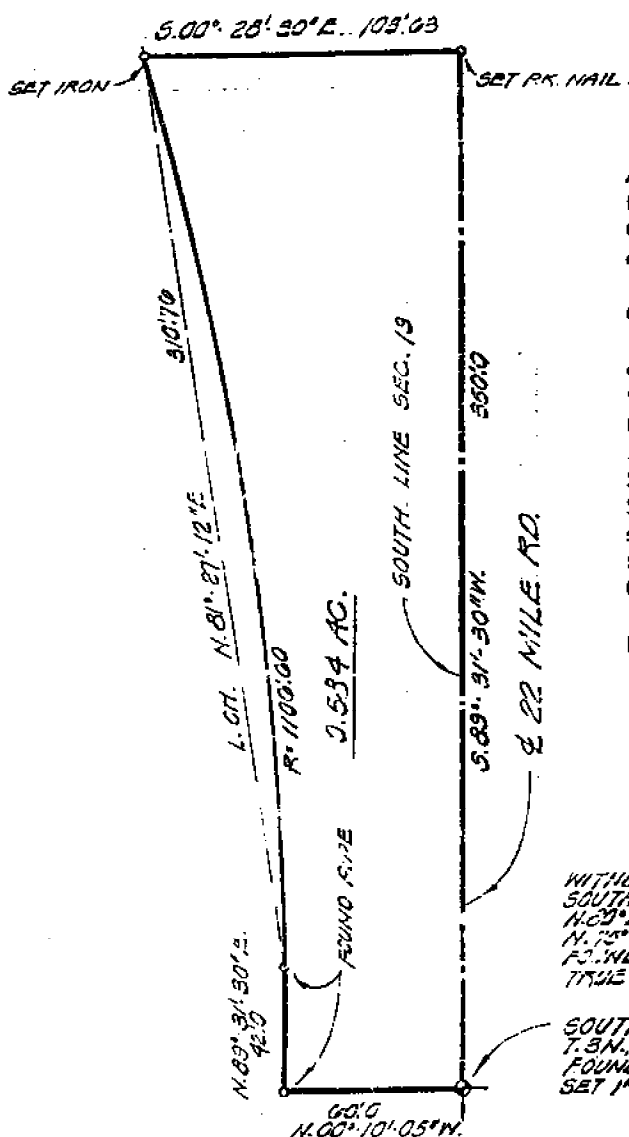
C. Description of monument for corner and accessories established to perpetuate locating the position of the corner:

- B-9 S. 1/4 corner section 19, found P.K. nail
Az. East, 1.63', found 5/8" iron rod in monument box
Az. 81°, 87.98', P.K. w/SDA tag in NW face U.P.
Az. 151°, 75.42', NE corner of Hse. #26000 (Concrete block)
Az. 183°, 28.43', nail w/MDOT tag in west face 30" maple
Az. 223°, 54.87', P.K. w/SDA tag in SE face 12" Maple
Az. South, 13.64', found 1/2" Iron Rod along edge of asphalt pvmt.



Signed by [Signature] Date 12-20-90
Surveyor's Michigan License No. #8386

CERTIFICATE of SURVEY



Description of 0.584 Acres

A parcel of land located in and being a part of the S.E. 1/4 of Section 19, T. 3 N., R. 14 E., Chesterfield Township, Macomb County, MI, and being more particularly described as follows:

Commencing at the S. 1/4 corner of said Section 19 and thence extending N. 00°-10'-15" W. 60.0 ft., thence N. 89°-31'-30" E. 42.0 ft., thence along a curve (R=1106.00 ft.) concave to the North whose long chord bears N. 81°-27'-12" E. 310.76 ft., thence S. 00°-28'-30" E. 133.63 ft., thence S. 89°-31'-30" W. 330.0 ft. along the South section line also the centerline of 22 Mile Road to the point of beginning and containing 0.584 acres of land.

Reserving easements of record

RECORDED IN MACOMB COUNTY
RECORDS AT: 3:12P M

JAN 17 1979

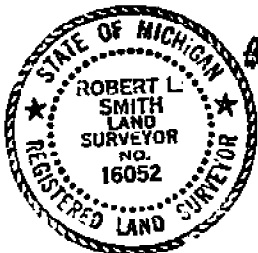
[Signature]
CLERK - REGISTER OF DEEDS
MACOMB COUNTY, MICHIGAN

WITNESSES:
SOUTH 230 FT. - PK. NAIL IN 15" MAPLE
N. 89° E. 88.10 FT. - PK. NAIL IN POWER POLE
N. 75° E. 78.25 FT. -
FOUND R.R. SPIKE 0.40 N. 1.00 W. OF
TRUE CORNER

SOUTH 1/4 POST SEC. 19
T. 3 N., R. 14 E.
FOUND 3/4" IRON 10" DEEP
SET 1" PDC ON TOP

I, **ROBERT L. SMITH**, a Registered Surveyor in the State of Michigan, hereby certify that I have surveyed the parcel (s) of land described and delineated hereon; that said plat is a true representation of the survey as performed by me, and that there are no encroachments other than as shown hereon; that said survey was performed with an error of closure no greater than 1 in 5000; and that I have fully complied with the requirements of Section 13, Act 132, P.A. 1970.

SCALE: 1" = 50'
DATE: NOV. 14-1978



Robert L. Smith
Surveyed To:
LEWINER ASSOCIATES, INCORPORATED
ENGINEERS & SURVEYORS
2288 WELLINGTON CRESCENT
MT. CLEMENS MICHIGAN
(313) 463-4594

78-100 USM CORPORATION

3

