

LAND CORNER RECORDATION CERTIFICATE
Filing Requirement of Act 74, Mich. P.A. 1970

For corners in

MACOMB
(County)

Located In: Chesterfield Township
Corner Code #7

RECORDED IN: CHESTERFIELD COUNTY
RECORD: 8130A

DEC 28 1993

Register of Deeds Stamp & File Number

- 1. Public Land Survey T 3N R 14E A-11
2. Property Controlling in Section S T R
3. Miscellaneous Property in Sec. S T R
4. Lot No. Recorded Plat
5. Private Claims

Grid table with columns A-M and rows 2-13. A dot is marked at row 11, column A.

I, Shelby W. Money, in a field survey on November 18, 1993, do hereby certify that under requirements of P.A. 74, Michigan P.A. of 1970, the corner points mentioned in lines 1 and 2 above were in conformance with regulations and rules therefore as required in the current manual of survey instructions of the United States Department of the Interior, Bureau of Land Management or by a decree of a Court of Law and/or that the corner points mentioned in lines 3, 4 and 5 above were in conformance with the rules of the Michigan Board of Land Surveyors or by a Decree of a Court of Law; established, re-established, monumented, re-monumented, recovered, found as expressed below:

NOTE: Not more than 4 corners, all in the same town and range, may be recorded on this certificate.

A. Description of original monument and accessories and/or subsequent restoration:

GLO POST, NO WITNESSES REMAIN

MACOMB COUNTY ROAD COMMISSION (1959) CHESTERFIELD TOWNSHIP / CONTROLLING IN SECTION 31, T.3N., R.14E. UNRECORDED CORNER CODE A-11
LCRC (1987) CHESTERFIELD TOWNSHIP / CONTROLLING IN SECTION 31, T.3N., R.14E. L.4366 P.690 KOBBS #14097
LCRC (1979) MACOMB TOWNSHIP / CONTROLLING IN SECTION 36, T.3N., R.13E. SODERBERG #17635 CORNER CODE A-11
LCRC (1988) CHESTERFIELD TOWNSHIP / CONTROLLING IN SECTION 31, T.3N., R.14E. L.4407 P.290 CORWAN #17622

B. Description of corner evidence found and/or method applied in restoring or reestablishing corner:

FOUND MONUMENT BOX AT CENTERLINE IRON WITH CAP #17622

THIS CORNER VERIFIED BY:

HOOPER SUBDIVISION SECTION 31 CHESTERFIELD TOWNSHIP
ERB INDUSTRIAL PARK SUBDIVISION SECTION 36 MACOMB TOWNSHIP
FENCE LINES RUNNING NORTH AND SOUTH

LIBER 29 PAGE 13
LIBER 77 PAGES 23-27

ACCEPTED BY THE MACOMB COUNTY SURVEY PEER GROUP AS THE OFFICIAL CORNER UNDER MICHIGAN PUBLIC ACT 345 OF 1990 AT A MEETING HELD ON 12-15-93
FRANK J. DEDUCKER, PS, PE, CHAIRMAN

C. Description of monument for corner and accessories established to perpetuate location of corner and accessories established:

REMOVED IRON WITH CAP #17622 AND REPLACED WITH 3/4" BAR AND MACOMB COUNTY REMONUMENTATION MARKER AND CAP #30092 WITHIN EXISTING MONUMENT BOX WITNESSES:

- NORTH 59.45' FOUND PK NAIL W/MCRC TAG IN THE WEST FACE OF A 24" TREE
N 60' E 80.65' FOUND PK W/MCRC TAG
N 25' W 33.60' FOUND CHISELED "X" IN THE EAST EDGE OF A SANITARY MANHOLE
S 70' E 97.10' SET PK NAIL W/MCW TAG IN THE NORTH FACE OF AN 18" ELM TREE
S 20' E 93.12' FOUND NORTHWEST CORNER OF CEMENT BLOCK AT HOUSE #25032
SOUTH 60.06' FOUND CONCRETE MONUMENT WITH CAP #15403

The selected location is accepted by me and is generally accepted by Professional Surveyors as the best available evidence of the position of the original corner.

Signed by Shelby W. Money
Surveyor's Michigan License No. 30092

Date 12-15-93



**LAND CORNER RECORDATION CERTIFICATE**  
**Filing Requirement of Act 74, Mich. P.A. 1970**

For corners in

<u>MACOMB</u> County:		Located in:	Corner Code #
		<b>Chesterfield Township</b>	
1. Public Land Survey	T <u>3N</u> R <u>14E</u>		<u>A-11</u>
	T _____ R _____		_____
	T _____ R _____		_____
	T _____ R _____		_____
2. Property Controlling in Section	S _____ T _____ R _____		_____
	S _____ T _____ R _____		_____
3. Miscellaneous Property in Sec.	S _____ T _____ R _____		_____
	S _____ T _____ R _____		_____
4. Lot No. _____, Recorded Plat _____			
5. Private Claims _____			

Register of Deeds Stamp & File Number

	A	B	C	D	E	F	G	H	I	J	K	L	M
2	6	5	4	3	2	1							
3													
4	7	8	9	10	11	12							
5													
6	16	17	16	15	14	13							
7													
8	19	20	21	22	23	24							
9													
10	30	29	28	27	26	25							
11													
12	31	32	33	34	35	36							
13													

I, Shelby W. Money in a field survey on November 18, 1993 do hereby certify that under requirements of P.A. 74, Michigan P.A. of 1970, the corner points mentioned in lines 1 and 2 above were in conformance with regulations and rules therefore as required in the current manual of survey instructions of the United States Department of the Interior, Bureau of Land Management or by a decree of a Court of Law and/or that the corner points mentioned in lines 3, 4 and 5 above were in conformance with the rules of the Michigan Board of Land Surveyors or by a Decree of a Court of Law, established, re-established, monumented, re-monumented, recovered, found as expressed below:

**NOTE: Not more than 4 corners, all in the same town and range, may be recorded on this certificate.**

A. Description of original monument and accessories and/or subsequent restoration:

G.O. POST, NO WITNESSES REMAIN			
MACOMB COUNTY ROAD COMMISSION (1959) CHESTERFIELD TOWNSHIP / CONTROLLING IN SECTION 31, T.3N., R.14E. CORNER CODE A-11	UNRECORDED	LCRC (1982) CHESTERFIELD TOWNSHIP / CONTROLLING IN SECTION 31, T.3N., R.14E. CORNER CODE A-11	L 4166 P. 690 CORNER #14897
FOUND 1-1/2" PIPE		FOUND 3/4" SQUARE IRON BAR	
N 02° E 59.40'	20" OAK TREE	NORTH 59.20'	PK NAIL & WASHER IN 20" OAK TREE
N 66° E 80.90'	POWER POLE	EAST/NORTHEAST 81.09'	PK NAIL & W.S.H.D. REFERENCE POINT IN POWER POLE
S 02° E 34.75'	18" ELM TREE	EAST/SOUTHEAST 97.41'	PK NAIL IN 18" ELM TREE
		SOUTH 65.60'	PK NAIL IN 8" MAPLE TREE
LCRC (1979) MACOMB TOWNSHIP / CONTROLLING IN SECTION 36, T.3N., R.13E. CORNER CODE B-11	L 3029 P. 204 SODERBERG #17635	LCRC (1988) CHESTERFIELD TOWNSHIP / CONTROLLING IN SECTION 31, T.3N., R.14E. CORNER CODE A-11	L 4497 P. 290 CORNER #17622
FOUND BOLT		SET 5/8" COPPER CLAD ROD 18" LONG W/ADOT TAG #17622 / YELLOW CAP	
NORTHEAST 87.00'	FOUND PK NAIL & WASHER (ACRC) IN D.E. POLE	N 05° E 89.12'	PK NAIL IN 25" WALNUT TREE
NORTHWEST 100.14'	SET PK NAIL IN D.E. POLE	N 05° E 81.07'	W.S.H.D. TAG IN A POWER POLE
ONE NORTH 59.25'	FOUND PK NAIL & WASHER IN A 24" TREE	S 70° E 97.34'	PK NAIL IN 18" ELM TREE
SOUTHWEST 47.27'	SET PK NAIL IN A 6" TREE	SOUTH 60.06'	PROPERTY MONUMENT WITH CAP #15403
		N 25° W 33.60'	CHISELED "X" IN THE EAST EDGE OF A MANHOLE
LCRC (1979) MACOMB TOWNSHIP / CONTROLLING IN SECTION 36, T.3N., R.13E. CORNER CODE B-11	L 3089 P. 047 SODERBERG #17635		
FOUND 1/2" BOLT			
NORTHEAST 87.00'	FOUND PK NAIL & WASHER (ACRC) IN D.E. POLE		
NORTHWEST 100.14'	SET PK NAIL IN D.E. POLE		
NORTH 59.25'	FOUND PK NAIL & WASHER IN A 24" TREE		
SOUTHWEST 47.27'	SET PK NAIL IN A 6" TREE		

B. Description of corner evidence found and/or method applied in restoring or reestablishing corner:

FOUND MONUMENT BOX AT CENTERLINE  
 IRON WITH CAP #17622

THIS CORNER VERIFIED BY:  
 KOOPER SUBDIVISION SECTION 31 CHESTERFIELD TOWNSHIP LIBER 29 PAGE 13  
 ERB INDUSTRIAL PARK SUBDIVISION SECTION 36 MACOMB TOWNSHIP LIBER 77 PAGES 23-27  
 FENCE LINES RUNNING NORTH AND SOUTH

C. Description of monument for corner and accessories established to perpetuate locating the position of the corner:

REMOVED IRON WITH CAP #17622 AND REPLACED WITH 3/4" BAR AND  
 MACOMB COUNTY REMONUMENTATION MARKER AND CAP #30092 WITHIN EXISTING MONUMENT BOX  
 WITNESSES:  
 NORTH 59.45' FOUND PK NAIL W/MCRC TAG IN THE WEST FACE OF A 24" TREE  
 N 60° E 80.65' FOUND PK W/MCRC TAG  
 N 25° W 33.60' FOUND CHISELED "X" IN THE EAST EDGE OF A SANITARY MANHOLE  
 S 70° E 97.10' SET PK NAIL W/MCRC TAG IN THE NORTH FACE OF AN 18" ELM TREE  
 S 20° E 93.12' FOUND NORTHWEST CORNER OF CEMENT BLOCK AT HOUSE #25032  
 SOUTH 60.06' FOUND CONCRETE MONUMENT WITH CAP #15403

The selected location is accepted by me and is generally accepted by Professional Surveyors as the best available evidence of the position of the original corner.

Signed by \_\_\_\_\_ Date \_\_\_\_\_

Surveyor's Michigan License No. 30092

# MACOMB COUNTY REMONUMENTATION

CORNER # A-11 T 3 N - R 14 E CHESTERFIELD TOWNSHIP  
COMMON DESCRIPTION N.W. CORNER SECTION 31

## FIELD RESEARCH

{Aew Field Book #1193 / Page 6}

**SITE CONDITIONS** (TYPE OF ROADWAY, FIELD, SWAMP, ETC.) -  
Asphalt road

### RECORDED EVIDENCE OF CORNER -

L.C.R.C.	L.4366	P.690	Kobs	(1987)
L.C.R.C.	L.4487	P.290	Gorman	(1988)
Hooper Subdivision	L.29	P.13		

### FOUND EVIDENCE OF CORNER AND CONDITION -

Monument box at centerline  
Iron w/cap Gorman

### FOUND RECORDED WITNESSES -

From L.C.R.C.	L.4487	P.200	
S 70° E	97.34'		pk'nail in 18" Elm tree
South	60.06'		Concrete monument w/cap #15403
N 25° W	33.60'		Chiseled "X" in sanitary manhole

### FOUND EXISTING OCCUPATION -

Matches Hooper Subdivision southeast  
Fence north  
Centerline road east/west  
Fence south

### SET NEW WITNESSES -

North	59.45'	pk'nail w/ MCRC tag in west face of 24" tree
N 60° E	80.65'	pk'nail w/MCRC tag
N 25° W	33.60'	Chiseled "X" on east edge of sanitary manhole
S 70° E	97.10'	pk'nail w/AEW tag in north face of 18" Elm tree
S 20° E	93.12'	Northwest corner of cement block house #25032
South	60.06'	Concrete monument w/cap #15403

### MEASURED REFERENCES -

None

# MACOMB COUNTY REMONUMENTATION

CORNER # A-11 T 3 N - R 14 E CHESTERFIELD TOWNSHIP  
COMMON DESCRIPTION N.W. CORNER SECTION 31

## RECORDS RESEARCH

(refer to date, Liber & Page, source, map #, etc.)

*43667*  
**ACT 74 RECORDED FORMS -**

L.C.R.C. L.4800 P.690  
L.C.R.C. L.4487 P.290

Kobs (1987)  
Gorman (1988)

### ACT 132 RECORDED FORMS -

### GLO NOTES -

Map

### DEEDS -

None

### UNRECORDED INFORMATION -

None

### ROAD COMMISSION INFORMATION -

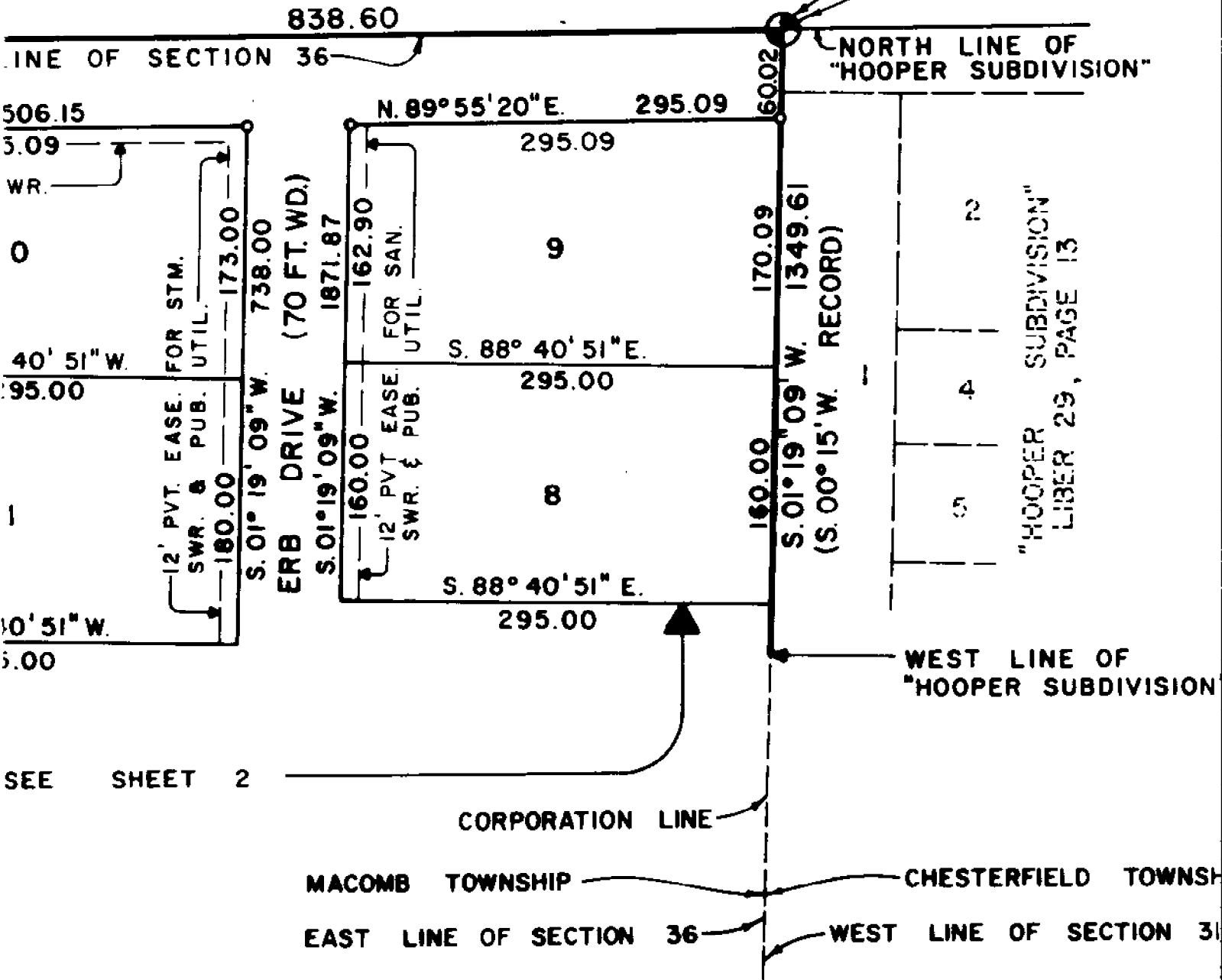
### TAX MAPS -

Aerials: 9-30E 9-31A

NORTHEAST CORNER OF SECTION 36, TOWN 3 NORTH, RANGE 13 EAST, MACOMB TOWNSHIP, MACOMB COUNTY, MICHIGAN.

ROAD (60 FT. WD.)

POINT OF BEGINNING



*See Instrument Plat L. 77 P. 26-27*

PLAT LEGE  
 ALL DIMEN  
 ALL CURVI  
 IN CHORD  
 (N.R.) DE  
 (R.) DEMO  
 CONCRETE

Copy

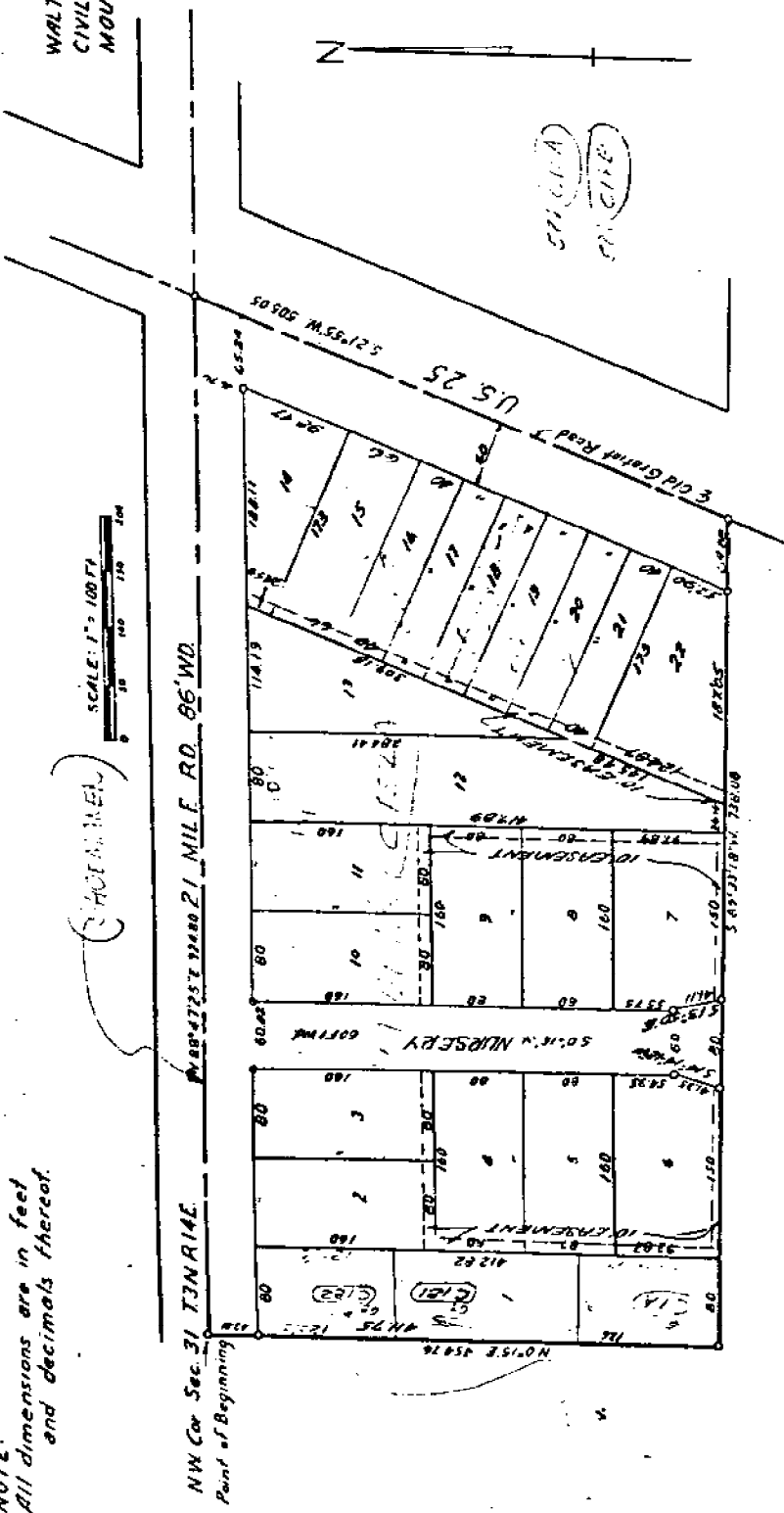
OCT 19 1953

# HOOPER SUB.

PART OF NW 1/4 OF SEC. 31, T3N R14E,  
CHESTERFIELD TWP. MACOMB CO. MICH.

NOTE:  
All dimensions are in feet  
and decimals thereof.

WALTER J. LEHNER & SONS  
CIVIL ENG & SURVEYING  
MOUNT CLEMENS, MICH



DEDICATION  
KNOW ALL MEN BY THESE PRESENTS, That I, Ola M. Hooper, widow, as proprietor have caused the land embraced in the annexed plat to be surveyed, laid out and platted, to be known as "Hooper Sub.", part of NW 1/4 of Sec. 31, Chesterfield Twp., Macomb Co., Mich., and that the streets as shown on said plat are hereby dedicated to the use of the public.

CERTIFICATE OF APPROVAL BY BOARD  
OF COUNTY ROAD COMMISSIONERS  
This plat has been examined and was approved on the 27th day of Sept., 1953, by the Macomb County Board of Road Commissioners.

Signed and Sealed in Presence of:  
*Lorraine Starkey*  
Lorraine Starkey  
*William A. Harris*  
William A. Harris

*Ola M. Hooper (L.S.)*  
Ola M. Hooper

*Roy Conroy*  
Roy Conroy, Chairman

*Alfred Foerster*  
Alfred Foerster, Vice-Chairman

*William E. Melan*  
William E. Melan, Member

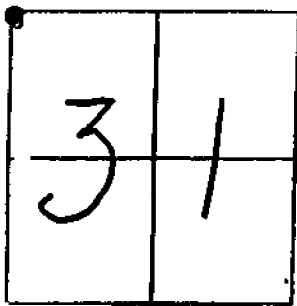
STATE OF MICHIGAN )  
SS.

A-11

File # 143  
SEC. 31

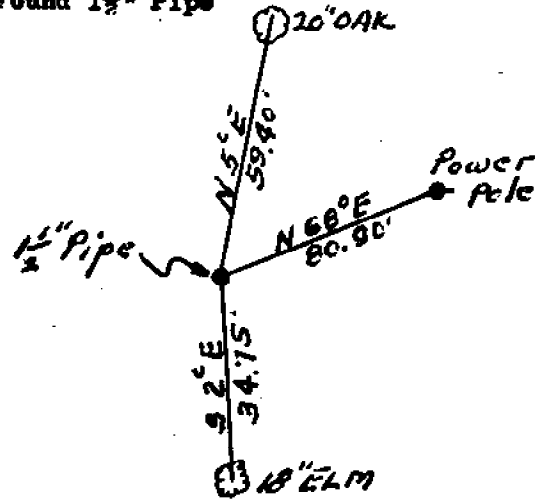
T. 3 N R. 14 E

Jan. 7, 1959



REMARKS

NW Cor. Sec. 31  
Found 1 1/2" Pipe



WITNESSES

20" Oak	N 5° E	59.40'
Power Pole	N 68° E	80.90'
18" Elm	S 2° E	34.75'

ROAD FILE No. \_\_\_\_\_

147

File Point No.	Date Filed	January 7	19 59
Assessment District No.	Station No.		
Township	Chesterfield	Section Corner	NW Cor. Sec. 31
Type of Surface		Width	
Description of Monument	1-1/2" Pipe		
Monument in Relation to Center Line of Pavement			

WITNESSES:

1. 20" Oak N. 5° E. 59.40'
2. Power Pole N. 68° E. 80.90'
3. 18" Elm S. 2° E. 34.75'
- 4.





LAND CORNER RECORDATION CERTIFICATE

FILING REQUIREMENT OF ACT 74, MICH. P.A.1970

MACOMB TOWNSHIP N 1/4 Post, NW CORNER SECTION 36 A574311

FOR CORNERS OF:-	LOCATED IN:-	CORNER CODE NUMBER
1. PUBLIC LAND SURVEY	T. 3 N. R. 13 E. 36	L-11, M-11
2. PROPERTY CONTROL-36 ING IN SECTION	T. 3 N. R. 13 E. 36	
3. MISCELLANEOUS PROPERTY IN SECTION	T. N. R. E.	
4. LOT NO. _____	RECORDED PLAT _____	
5. PRIVATE CLAIMS _____		

RECORDED IN MACOMB COUNTY RECORDS AT: 11/160 M. APR 17 1979

Edna M. Hill  
CLERK - REGISTER OF DEEDS  
MACOMB COUNTY, MICHIGAN

REGISTER OF DEEDS STAMP AND FILING NUMBER

I, William E. Soderberg do hereby certify that under requirements of P.A. 74, Michigan P.A. of 1970, the corner points mentioned in lines 1 and 2 above (identified with circles on index code diagram-over) were, in a field survey on October 17 1978, established, re-established, monumented, re-monumented, recovered or restored as expressed below and in conformance with regulations and rules therefore as required in the current manual of survey instructions of the United States Department of the Interior, Bureau of Land Management or by a decree of a court of law. Furthermore, that the corner points mentioned in lines 3, 4 and 5 above were, in a field survey on \_\_\_\_\_ 19\_\_\_\_, found, recovered, restored, established or re-established as expressed below and in conformance with the rules of the Michigan State Board of Registration for Land Surveyors or, by a Decree of a Court of law:

A. Description of original monument and accessories and/or subsequent restoration:

B. Description of corner evidence found and/or method applied in restoring or re-establishing corner:

- L-11, Found 5/8" Pipe
- M-11, Found 1/2" Bolt

C. Description of monument for corner and accessories established to perpetuate locating the position of the corner:

- L-11, Found P.K. nail and Washer, M.C.R.C., in D.E. Pole, N.E. 61.37'  
Found Double headed nail in 20" tree, S.S.W. 37.00'  
Found P.K. nail and washer, M.C.R.C., in D.E. Pole, S.W. 75.91'  
Found double headed nail in D.E. Pole, S.E. 63.80'
- M-11, Found P.K. nail and washer, M.C.R.C., in D.E. Pole, N.E. 87.00'  
Set P.K. nail in D.E. Pole, N.W. 100.14'  
Found P.K. nail and washer in 24" tree, North 59.25'  
Set P.K. nail in 6" tree, S.W. 47.27'

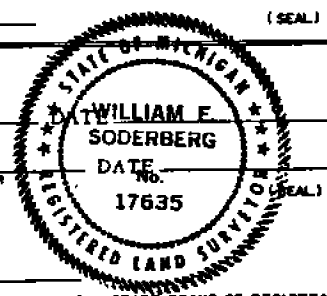
SIGNED BY William E. Soderberg DATE 4/16/79

SURVEYOR'S MICHIGAN REGISTRATION NO. 17635 (SEAL)

FOR STATE AND UNITED STATES AGENCIES:

SIGNED BY \_\_\_\_\_ CHIEF OF SURVEY PARTY

APPROVED AND SIGNED BY \_\_\_\_\_ MICHIGAN REGISTERED LAND SURVEYOR



SURVEYOR'S MICHIGAN REGISTRATION NO. \_\_\_\_\_ 00884

Form No. MLM736

FORM APPROVED BY MICHIGAN STATE BOARD OF REGISTRATION, JAN. 28, 1971  
APPROVED BY MICHIGAN SOCIETY OF REGISTERED LAND SURVEYORS

LAND CORNER RECORDATION CERTIFICATE  
FILING REQUIREMENT OF ACT 74, MICH. P.A. 1970

815157

FOR CORNERS OF - LOCATED IN - CORNER CODE NUMBER

1. PUBLIC LAND SERVICE - 3 S R 14 W (A-11), (A-12)

2. PROPERTY CONTROL 31 - 3 R R 14 W Chesterfield Township

3. MISCELLANEOUS PROPERTY IN SECTION - 1 - 3 R - 1

4. LOT NO. - RECORDED PLAT -

5. PRIVATE CLAIMS -

REGISTER OF DEEDS STAMP AND FILING NUMBER

I, Herbert J. Kobs do hereby certify that under requirements of P.A. 74, Michigan P.A. of 1970, the corner points mentioned in lines 1 and 2 above were, in a field survey on March 16, 1987, established, re-established, monumented, re-monumented, recovered or restored as expressed below and in conformance with regulations and rules therefore as required in the current manual of survey instructions of the United States Department of the Interior, Bureau of Land Management or by a decree of a court of law. Furthermore, that the corner points mentioned in lines 1, 4 and 5 above were, in a field survey on \_\_\_\_\_, 19\_\_\_\_, found, recovered, restored, established or re-established as expressed below and in conformance with the rules of the Michigan State Board of Registration for Land Surveyors or by a decree of a court of law.

A. Description of original monument and accessories and/or subsequent restoration:

B. Description of corner evidence found and/or method applied in restoring or re-establishing corner:

- (A-11) Found 3/4" square iron bar.
- (A-12) Found boat spike.

RECORDED IN MACOMB COUNTY  
RECORDS AT: 9.43A M.

OCT 20 1987

*Edna Hill*  
CLERK - REGISTER OF DEEDS  
MACOMB COUNTY, MICHIGAN

C. Description of monument for corner and accessories established to perpetuate locating the position of the corner:

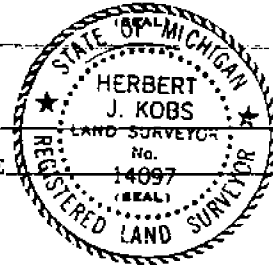
- |   |                                    |
|---|------------------------------------|
| (A-11) 3/4" square iron bar                                     | (A-12) Boat spike                  |
| .K. nail & washer in 20" oak-North-59.29'                       | P.K. nail in 16" oak-N.N.W.-18.23' |
| .K. nail & M.S.H.D. reference point in power pole-E.N.E.-81.09' | P.K. nail in 12" oak-N.W.-33.42'   |
| .K. nail in 18" elm-E.S.E.-97.41'                               | P.K. nail in 32" oak-W.S.W.-16.69' |
| .K. nail in 8" maple-South-65.80'                               | P.K. nail in 4" oak-S.S.W.-5.76'   |
- 14 - new also found*

SIGNED BY *Herbert J. Kobs* DATE July 8, 1987  
Herbert J. Kobs

SURVEYOR'S MICHIGAN REGISTRATION NO. 14097

FOR STATE AND UNITED STATES AGENCIES:  
SIGNED BY \_\_\_\_\_ DATE \_\_\_\_\_  
CHIEF OF SURVEY PARTY

APPROVED AND SIGNED BY \_\_\_\_\_ DATE \_\_\_\_\_  
MICHIGAN REGISTERED LAND SURVEYOR



SURVEYOR'S MICHIGAN REGISTRATION NO. 14097 01294

11/18/93

WBS  
M-JL

Page 4

Book 1197

4487 200

B284057

LAND CORNER RECORDATION CERTIFICATE  
Filing Requirement of Act 74, Mich. P.A. 1970

For corners in

1. Macomb	Located In:	Corner Code #
Public Land Survey	T 3N R 14E	A-11
	T ___ R ___	_____
	T ___ R ___	_____
	T ___ R ___	_____
2. Property Controlling in Section	S ___ T ___ R ___	_____
3. Miscellaneous Property in Sec.	S ___ T ___ R ___	_____

Register of Deeds Stamp & File Number

4. Lot No. \_\_\_\_\_ Recorded Plat \_\_\_\_\_  
 5. Private Claims \_\_\_\_\_

A	B	C	D	E	F	G	H	I	J	K	L	M
2	6	5	4	3	2	1						
3												
4	7	8	9	10	11	12						
5												
6	18	17	16	15	14	13						
7												
8	19	20	21	22	23	24						
9												
10	30	29	28	27	26	25						
11												
12	31	32	33	34	35	36						
13												

to hereby certify that under requirements of P.A. 74, Michigan P.A. of 1970, the corner points mentioned in lines 1 and 2 above were in conformance with regulations and rules therefore as required in the current manual of survey instructions of the United States Department of the Interior, Bureau of Land Management or by a decree of a Court of Law and/or that the corner points mentioned in lines 3, 4 and 5 above were in conformance with the rules of the Michigan Board of Land Surveyors or by a Decree of a Court of Law; established, re-established, monumented, re-monumented, recovered, found as expressed below:

NOTE: Not more than 4 corners, all in the same town and range, may be recorded on this certificate.

A. Description of original monument and accessories and/or subsequent restoration:

RECORDED IN MACOMB COUNTY  
RECORDS AT: 3:38 P.M.  
AUG 28 1993

*Edna Hill*  
CLERK - REGISTER OF DEEDS  
MACOMB COUNTY, MICHIGAN

B. Description of corner evidence found and/or method applied in restoring or reestablishing corner

Found 1/2" bolt, 2-3/4" long with 3/4" square head.  
from witnesses recorded by Herbert Kobs LLS 14097. L 4306 Pg 690

NORTH	59.29'	PK nail & washer in 20" oak
ENE	81.09' <i>PK/S</i>	PK nail & MSHD reference point in power pole
ESE	97.41' <i>None</i>	PK nail in 18" elm
SOUTH	65.80' <i>with</i>	PK nail in 8" maple

*SWM TAG 97, 10*

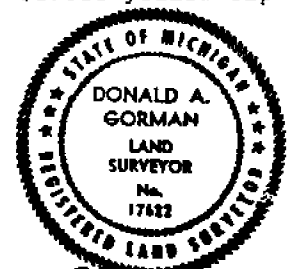
*Building 93, 12*

C. Description of monument for corner and accessories established to perpetuate locating the position of the corner:

Set 5/8" copper clad rod, 18" long with M.D.O.T. #17622 yellow cap

FD	N 05 E	<i>PK/TAG 59.75</i>	P.K. nail in 23" walnut	59.12'
FD	N 65 E		M.D.O.T. tag in P. pole	81.07'
FD	S 70 E		P.K. nail in 18" elm	97.34
FD	South		Property mon. with cap #15403	60.06'
FD	N 25 W		chiseled 'X' in east edge MH.	33.60'

*None TAG/PA*



Signed by Donald A. Gorman  
MICH. DEPT. OF TRANS. #17622

Date Aug 8, 1993

01375



This plat will be corrected correctly before recording.

Pursuant to a contract with and Instructions from Edward Tiffin Esquire Surveyor General of the United States bearing date 20th day of November 1816 I have admeasured laid out and surveyed the above described fractional Township and hereby certify that it had such marks and bounds both natural and artificial as are represented on said plat and describe in the full notes made thereof and returned with this plat into the Surveyor General's Office on the 18th day of February 1818

William Preston

CHESTERFIELD