

LAND CORNER RECORDATION CERTIFICATE
Filing Requirement of Act 74, Mich. P.A. 1970

For corners in

MACOMB
(County)

Located In: Harrison Township
Corner Code #A-1

RECORDED IN MACOMB COUNTY
RECORDED AT: 8:30 A.M.

DEC 23 1993

Register of Deeds Stamp & File Number

- 1. Public Land Survey T 2N R 14E A-1
2. Property Controlling in Section S T R
3. Miscellaneous Property in Sec. S T R
4. Lot No. , Recorded Plat
5. Private Claims

Grid table with columns A-L and rows 1-13. Numbers 1-36 are placed in the grid cells.

I, Shelby W. Money, in a field survey on November 18, 1993, do hereby certify that under requirements of P.A. 74, Michigan P.A. of 1970, the corner points mentioned in lines 1 and 2 above were in conformance with regulations and rules...

NOTE: Not more than 4 corners, all in the same town and range, may be recorded on this certificate.

A. Description of original monument and accessories and/or subsequent restoration:

MACOMB COUNTY ROAD COMMISSION (1934) CHESTERFIELD TOWNSHIP / CONTROLLING IN SECTION 31, T.3N., R.14E. UNRECORDED #A-13
MACOMB COUNTY ROAD COMMISSION (1957) CHESTERFIELD TOWNSHIP / CONTROLLING IN SECTION 31, T.3N., R.14E. UNRECORDED #A-13
LCRC (1980) CLINTON TOWNSHIP / CONTROLLING IN SECTION 1, T.2N., R.13E. SODERBERG #17635 #A-1
LCRC (1989) CLINTON TOWNSHIP / CONTROLLING IN SECTION 1, T.2N., R.13E. SODERBERG #17635 #A-1

B. Description of corner evidence found and/or method applied in restoring or reestablishing corner:

FOUND 1" PIPE

THIS CORNER VERIFIED BY:

M.D.O.T. RIGHT-OF-WAY DRAWING
MATCHES EDESEL FORD - ROSSO SUBDIVISION

SHEET 138
LIBER 38 PAGE 13

ACCEPTED BY THE MACOMB COUNTY SURVEY PEER GROUP AS THE OFFICIAL CORNER UNDER MICHIGAN PUBLIC ACT 345 OF 1990 AT A MEETING HELD ON 12-15-93. FRANK J. DeDECKER, PS, PE, CHAIRMAN

C. Description of monument for corner and accessories established to perpetuate locating the position of the corner:

REPLACED 1" PIPE WITH 3/4" BAR MACOMB COUNTY REMONUMENTATION MARKER #30092
WITNESSES:

- N 05° E 40.96' FOUND POINT "<" ANGLE IRON FENCE POST IN CONCRETE
N 40° W 19.59' FOUND PK NAIL IN THE NORTHEAST FACE OF A 4" BASSWOOD TREE
EAST 7.50' FOUND 3/4" PIPE
SOUTH 60.34' FOUND PK NAIL IN THE NORTH EDGE OF ROSSO HIGHWAY
EAST 125.86' FOUND CENTERLINE OF SNOVER ROAD PAVEMENT

The selected location is accepted by me and is generally accepted by Professional Surveyors as the best available evidence of the position of the original corner.



Signed by Shelby W. Money
Surveyor's Michigan License No. 30092

Date 12-15-93

LAND CORNER RECORDATION CERTIFICATE

FILING REQUIREMENT OF ACT 74, MICH. P.A. 1970

SECTION 1, CLINTON

FOR CORNERS OF --:	LOCATED IN --:	CORNER CODE NUMBER
1. PUBLIC LAND SURVEY _____ T. <u>2</u> N. <u>X</u> R. <u>13</u> E. <u>X</u>		<u>L-1 M-1</u>
2. PROPERTY CONTROLLING IN SECTION _____ T. _____ N. _____ S. _____ R. _____ E. _____ W. _____		
3. MISCELLANEOUS PROPERTY IN SECTION _____ T. _____ N. _____ S. _____ R. _____ E. _____ W. _____		
4. LOT NO. _____, RECORDED PLAT _____		
5. PRIVATE CLAIMS _____		

1666835

RECORDED IN MACOMB COUNTY RECORDS AT: 12:35 P.M.

SEP - 3 1980

Edna H. Hill
CLERK - REGISTER OF DEEDS
MACOMB COUNTY, MICHIGAN

REGISTER OF DEEDS STAMP AND FILING NUMBER

I, WILLIAM E. SODERBERG, do hereby certify that under requirements of P.A. 74, Michigan P.A. of 1970, the corner points mentioned in lines 1 and 2 above were, in a field survey on AUGUST 18, 1980, established, re-established, monumented, re-monumented, recovered or restored as expressed below and in conformance with regulations and rules therefore as required in the current manual of survey instructions of the United States Department of the Interior, Bureau of Land Management or by a decree of a court of law. Furthermore, that the corner points mentioned in lines 3, 4 and 5 above were, in a field survey on _____, 19____, found, recovered, restored, established or re-established as expressed below and in conformance with the rules of the Michigan State Board of Registration for Land Surveyors or, by a Decree of a Court of law:

A. Description of original monument and accessories and/or subsequent restoration:

B. Description of corner evidence found and/or method applied in restoring or re-establishing corner:

M-1 - NORTHEAST CORNER OF SECTION 1 - FOUND 3/4" PIPE
L-1 - NORTH 1/4 POST OF SECTION 1 - SET P.K. NAIL FROM OLD HIGHWAY RECORDS AND ADJOINING PROPERTY DESCRIPTIONS

C. Description of monument for corner and accessories established to perpetuate locating the position of the corner:

<u>M-1</u>	<u>M-1</u>
<u>N 27° E 59.10' & TOP OF HYDRANT</u>	<u>S 67° E 83.23' PK IN N FACE UTILITY PIPE</u>
<u>S 20° E 44.36' & TOP OF HYDRANT</u>	<u>N 05° E 32.55' PK IN E FACE 30" OAK</u>
<u>S 41° W 71.15' PK IN N.W FACE D.E POLE</u>	<u>S 03° W 57.06' PK IN N EDGE ASPHALT</u>
<u>N 31° W 68.84' PK IN S.W FACE 15" TREE</u>	<u>N 50° W 17.13' PK IN SW FACE 4" OAK.</u>
<u>EAST 2405.39' NORTHEAST CORNER.</u>	

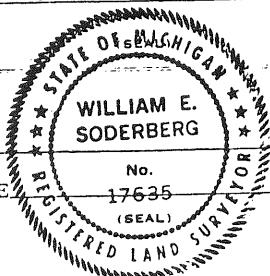
SIGNED BY William E. Soderberg DATE 8-25-80

SURVEYOR'S MICHIGAN REGISTRATION NO. 17635

FOR STATE AND UNITED STATES AGENCIES:

SIGNED BY _____ DATE _____

APPROVED AND SIGNED BY _____ DATE _____



SURVEYOR'S MICHIGAN REGISTRATION NO. _____

01005

LAND CORNER RECORDATION CERTIFICATE

FILING REQUIREMENT OF ACT 74, MICH. P.A. 1970

SECTION 6, HARRISON

FOR CORNERS OF -:	LOCATED IN -:	CORNER CODE NUMBER
1. PUBLIC LAND SURVEY _____	T. <u>2</u> N. S. R. <u>14</u> E. W.	<u>A-1</u>
2. PROPERTY CONTROLLING IN SECTION _____	T. _____ N. S. R. _____ E. W.	_____
3. MISCELLANEOUS PROPERTY IN SECTION _____	T. _____ N. S. R. _____ E. W.	_____
4. LOT NO. _____, RECORDED PLAT _____		
5. PRIVATE CLAIMS _____		

LIBER 3264 PAGE 502

A666935

RECORDED IN MACOMB COUNTY
RECORDS AT: 10:31 a.m.
SEP - 5 1980

William E. Soderberg
CLERK - REGISTER OF DEEDS
MACOMB COUNTY, MICHIGAN

REGISTER OF DEEDS STAMP AND
FILING NUMBER

I, WILLIAM E. SODERBERG, do hereby certify that under requirements of P.A. 74, Michigan P.A. of 1970, the corner points mentioned in lines 1 and 2 above were, in a field survey on AUGUST 18, 1980, established, re-established, monumented, re-monumented, recovered or restored as expressed below and in conformance with regulations and rules therefore as required in the current manual of survey instructions of the United States Department of the Interior, Bureau of Land Management or by a decree of a court of law. Furthermore, that the corner points mentioned in lines 3, 4 and 5 above were, in a field survey on _____, 19____, found, recovered, restored, established or re-established as expressed below and in conformance with the rules of the Michigan State Board of Registration for Land Surveyors or, by a Decree of a Court of law:

A. Description of original monument and accessories and/or subsequent restoration:

B. Description of corner evidence found and/or method applied in restoring or re-establishing corner:

A-1 - NORTHWEST CORNER SECTION 6

C. Description of monument for corner and accessories established to perpetuate locating the position of the corner:

A-1

S 67°E 83.23 PK NAIL IN NORTH FACE UTILITY POLE
N 05°E 32.55 PK NAIL IN EAST FACE 30" OAK.
S 02°W 57.06 PK NAIL IN NORTH EDGE ASPHALT
N 50°W 17.13 PK IN SOUTHWEST FACE 4" OAK.

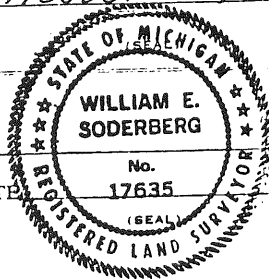
SIGNED BY William E. Soderberg DATE AUGUST 25, 1980

SURVEYOR'S MICHIGAN REGISTRATION NO. 17635

FOR STATE AND UNITED STATES AGENCIES:

SIGNED BY _____ DATE _____
CHIEF OF SURVEY PARTY

APPROVED AND SIGNED BY _____ DATE _____
MICHIGAN REGISTERED LAND SURVEYOR



SURVEYOR'S MICHIGAN REGISTRATION NO. _____

01006

3!

LAND CORNER RECORDATION CERTIFICATE

Filing Requirement of Act 74, Mich. P.A. 1970

RECORDED IN MACOMB COUNTY RECORDS AT: 1/15p M.

JUL 19 1989

Edna Hill

CLERK - REGISTER OF DEEDS MACOMB COUNTY, MICHIGAN

Register of Deeds Stamp & File Number

For corners in	Located In:	Corner Code #
1 Public Land Survey	T 3 N R 14 E	A-13
	T R	
	T R	
	T R	
2 Property Controlling in Section	S T R	
3 Miscellaneous Property in Sec.	S T R	

4 Lot No. _____ Recorded Plat _____
 5 Private Claims _____

Donald A. Gorman a field survey on May 8, 1989 hereby certify that under requirements of P.A. 74 Michigan P.A. of 1970, the corner points mentioned in lines 1 and 2 above were in conformance with regulations and rules therefore as required in the current manual of survey instructions of the United States Department of the Interior, Bureau of Land Management or by a decree of a Court of Law and/or that the corner points mentioned in lines 3, 4 and 5 above were in conformance with the rules of the Michigan Board of Land Surveyors or by a Decree of a Court of Law, established, re-established, monumented, re-monumented, recovered, found as expressed below

NOTE: Not more than 4 corners, all in the same town and range, may be recorded on this certificate.

	A	B	C	D	E	F	G	H	I	J	K	L	M
2	6		5		4		3		2		1		
3													
4	7		8		9		10		11		12		
5													
6	18		17		16		15		14		13		
7													
8	19		20		21		22		23		24		
9													
10	30		29		28		27		26		25		
11													
12	31		32		33		34		35		36		
13													

A Description of original monument and accessories and/or subsequent restoration:

B Description of corner evidence found and/or method applied in restoring or reestablishing corner:
 A-13
 MDOT corner tie records Herbert J. Kobs RLS #14097
 C. J. Lisee 4-3-61 Found 1" pipe Drawing (Job #180-84 April 19, 1984)
 Fd. 1" pipe
 N 15 E 33.76' 26" oak N 75 W 10.24' PK in 5" oak
 N 53 E 46.06' 17" elm N 20 W 19.20' PK in twin 6" elm
 S 36 W 26.85' T. pole N 15 E 35.52' PK in 28" oak stump
 EAST 7.40' 3/4" pipe recorded as
 NE corner Sec. 1 T2N, R13E by
 Bill Soderberg
 Matches distances as recorded in the Edsel Ford-Rosso Subdivision
 L 38 Pg 13

C. Description of monument for corner and accessories established to perpetuate locating the position of the corner:
 A-13
 1" dia. pipe
 N 40 W 19.59' PK nail in 4" Basswood
 EAST 7.50' 3/4" pipe recorded by William Soderberg L376
 N 15 E 33.52' PK nail in 28" oak stump as NW cor sec 6
 SOUTH 60.34' PK nail in N. EM Rosso Hwy.
 N 87 E 2676.50' S1/4 cor. (boatspike)
 (2676.58' recorded)
 N 87 E 143.82' measured & recorded to center line Edsel Ford Hwy



Signed by Donald A. Gorman Date June 7, 1989
 Surveyor's Michigan License No 17622

LAND CORNER RECORDATION CERTIFICATE
Filing Requirement of Act 74, Mich. P.A. 1970

B391865

For corners in

MACOMB COUNTY
County

Located In: CLINTON TWP.

Corner Code ==

- 1. Public Land Survey T 2N R 13E L-1
T 2N R 13E M-1
T _____ R _____
T _____ R _____
- 2. Property Controlling S 1 T _____
in Section S _____ T _____ R _____
- 3. Miscellaneous S _____ T _____ R _____
Property in Sec. S _____ T _____ R _____

Register of Deeds Stamp & File Number

- 4. Lot No. _____, Recorded Plat _____
- 5. Private Claims _____

A	B	C	D	E	F	G	H	I	J	K	L	M
2	5	4	3	2	1							
3												
4	7	8	9	10	11	12						
5												
6	18	17	16	15	14	13						
7												
8	19	20	21	22	23	24						
9												
10	30	29	28	27	26	25						
11												
12	31	32	33	34	35	36						
13												

William E. Soderberg in a field survey on July 26 19 89

do hereby certify that under requirements of P.A. 74, Michigan P.A. of 1970, the corner points mentioned in lines 1 and 2 above were in conformance with regulations and rules therefore as required in the current manual of survey instructions of the United States Department of the Interior, Bureau of Land Management or by a decree of a Court of Law and/or that the corner points mentioned in lines 3, 4 and 5 above were in conformance with the rules of the Michigan Board of Land Surveyors or by a Decree of a Court of Law, established, re-established, monumented, re-monumented, recovered, found as expressed below:

NOTE: Not more than 4 corners, all in the same town and range, may be recorded on this certificate.

A. Description of original monument and accessories and/or subsequent restoration

RECORDED IN MACOMB COUNTY
RECORDS AT: 3:41 P M.

SEP 7 1989

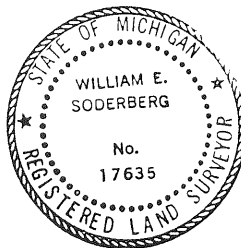
Edna Hill

CLERK - REGISTER OF DEEDS
MACOMB COUNTY, MICHIGAN

B. Description of corner evidence found and/or method applied in restoring or reestablishing corner:

#L-1:
FOUND MONUMENT BOX
SET FORM PIN

#M-1:
FOUND 1 1/2" PIPE



C. Description of monument for corner and accessories established to perpetuate locating the position of the corner:

#L-1:
FOUND MONUMENT BOX
SET FORM PIN

#M-1:
FOUND 1 1/2" PIPE

N/WEST 79.21' SET P.K.NAIL W/TAG #17635 IN THE SOUTHWEST FACE 14" PINE.

N/EAST 62.91' FOUND NAIL W/MDOT TAG IN THE NORTHWEST FACE OF A U.P.

S/EAST 108.69' SET P.K.NAIL W/TAG #17635 IN THE SOUTHWEST FACE OF A U.P.

S/WEST 75.47' SET P.K.NAIL W/TAG #17635 IN THE NORTHWEST FACE OF A U.P.

N/WEST 19.67' FOUND P.K.NAIL IN THE EAST FACE OF A 5" POPLAR TREE.

SOUTH 56.87' TO THE NORTH EDGE OF EXISTING ROAD.

ESE 90.59' FOUND NAIL W/MDOT TAG.

EAST 7.43' FOUND 1" PIPE

NORTH 33.39' FOUND P.K.NAIL IN THE WEST FACE OF A 28" STUMP

Signed by *William E. Soderberg*

Date JULY 26, 1989

Surveyor's Michigan License No. 17635

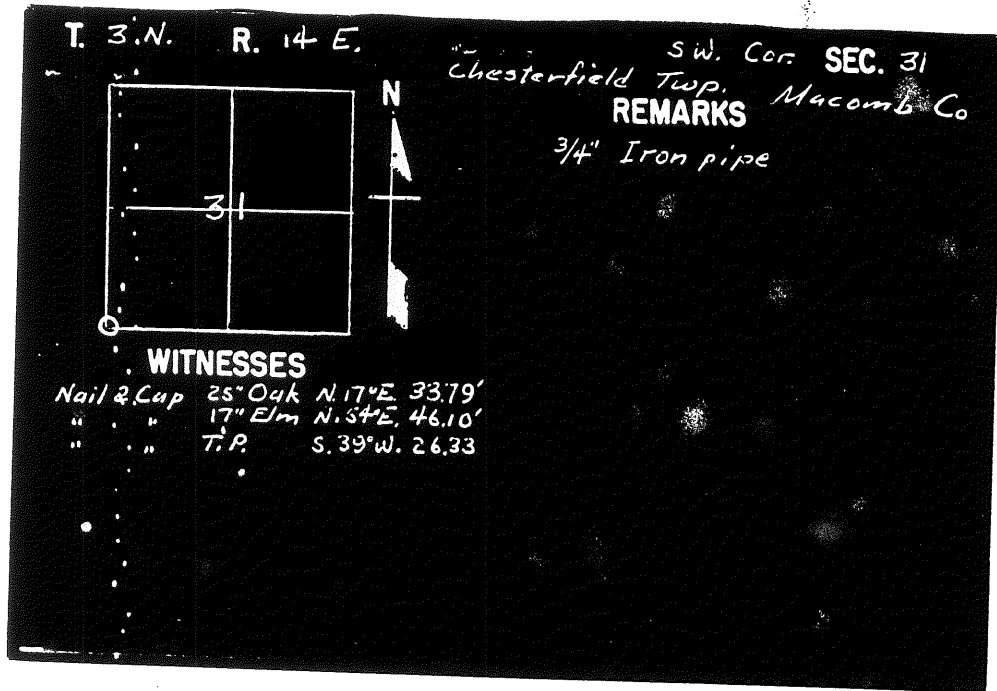
Road File No. _____

A-13
(2)

File Point No.	Date Filed	March 10, 1957
Assessment District No.	Station No.	
Township	Section Corner	SW Sec 31 T3N R4E
Type of Surface	Width	
Description of Monument	3/4 Iron Pipe	
Monument in Relation to Center Line of Pavement		

WITNESSES:

- Nail & cap 25" Oak N17°E 33.79'
- " " 17" Elm N54°E 46.10'
- " " T.P. S 39°W 26.33'
-



WITNESSES

- Nail & Cap 25" Oak N17°E 33.79'
- " " 17" Elm N54°E 46.10'
- " " T.P. S 39°W 26.33'

Road File No. _____

File Point No.	Date Filed	6/27 1934
Assessment District No.	Station No.	
Township	Section Corner	SW Cor. Sec 31.
Type of Surface	Width	18.
Description of Monument	1" Square Iron Rod 2" below surface.	
Monument in Relation to Center Line of Pavement		

WITNESSES:

- Nail in 1 1/2" Oak N15°E 29.8'
- " " 12" Elm N45°E 42.7'
- " " U.E. Pole S 37°W 31.4'
-

MACOMB COUNTY REMONUMENTATION

CORNER # A-13 T 3 N - R 14 E CHESTERFIELD TOWNSHIP
COMMON DESCRIPTION S.W. CORNER SECTION 31

RECORDS RESEARCH

(refer to date, Liber & Page, source, map #, etc.)

ACT 74 RECORDED FORMS -

L.4686 P.639 Gorman (1989) Found 1" iron

ACT 132 RECORDED FORMS -

GLO NOTES -

Map

DEEDS -

None

UNRECORDED INFORMATION -

MDOT corner tie records.	Lisee (1961)	Found 1" pipe
N 15° E 33.76'	26" Oak	
N 53° E 46.06'	17" Elm	
S 36° W 26.85'	"T" pole	

ROAD COMMISSION INFORMATION -

TAX MAPS -

9-31E

MACOMB COUNTY REMONUMENTATION

CORNER # A-13 T 3 N - R 14 E CHESTERFIELD TOWNSHIP
COMMON DESCRIPTION S.W. CORNER SECTION 31

FIELD RESEARCH

{AEW field book #1193 / page 2

SITE CONDITIONS (TYPE OF ROADWAY, FIELD, SWAMP, ETC.) -
Swampy

RECORDED EVIDENCE OF CORNER -

L.C.R.C. L.4686 P.39

Edsel Ford - Rosso Subdivision

L.38 P.13

FOUND EVIDENCE OF CORNER AND CONDITION -

Found 1" pipe per L.C.R.C.

FOUND RECORDED WITNESSES -

L.C.R.C. L.4686 P.39

Found / 1" diameter pipe

N 40° W 19.59'

East 7.50'

N 15° E 33.52'

South 60.34'

N 87° E 2676.50'

(2676.58'

N 87° E 143.82'

pk'nail in 4" Basswood

3/4" pipe recorded by William Soderberg L.376 P.502?;
as the Northwest Corner of Section 6, T.2N., R.14E.

pk'nail in 28" oak stump

pk'nail in north EM Rosso Highway

South 1/4 corner, a boat spike
recorded)

measured & recorded to centerline of Edsel Ford Highway

FOUND EXISTING OCCUPATION -

Match Edsel Ford Subdivision to northeast

Found 3/4" pipe at the southwest corner of Lot 25

SET NEW WITNESSES -

N 05° E 40.96'

N 40° W 19.59'

East 7.50'

South 60.34'

East 125.86'

Point "<" angle iron fence post in concrete

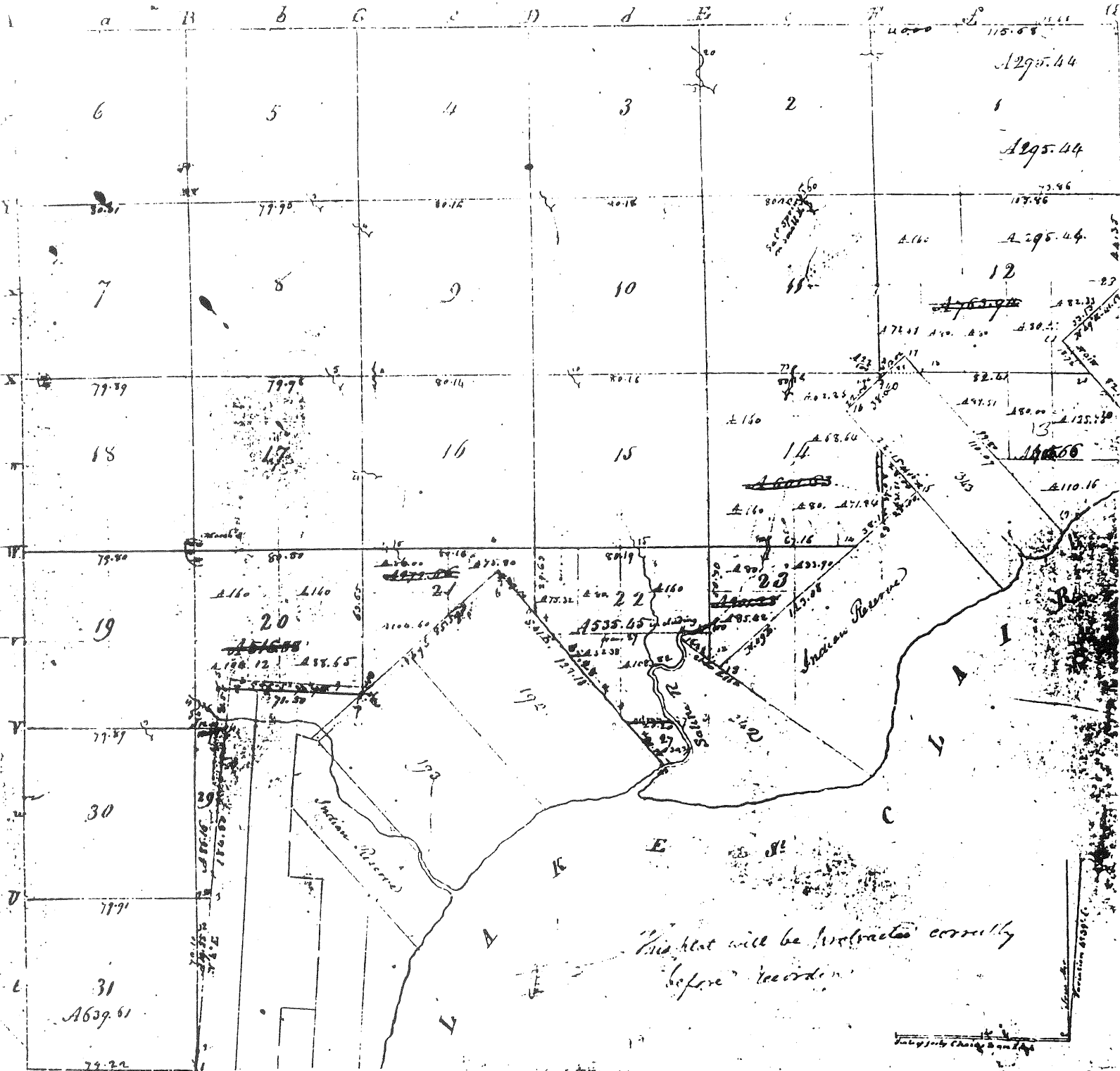
pk'nail in the northeast face of 4" Basswood

3/4" pipe / Northeast Corner of Section 1, T.2N., R.13E.

pk'nail in north edge of Rosso Highway

centerline of Snover Road pavement

MEASURED REFERENCES -



Pursuant to a Contract with and Instructions from Edward Tiffin Esquire Surveyor General of the United States bearing date 20th day of November 1816 I have administered land out as Surveyed the above described fractional Township and hereby certify that it had such marks and bounds both natural and artificial as are represented on said plat and described in the following notes made thereof and returned with this plat into the Surveyor General's Office on the 18th day of February 1818

William Preston Esq.

CLINTON TWP
T.2N.-R.13E.

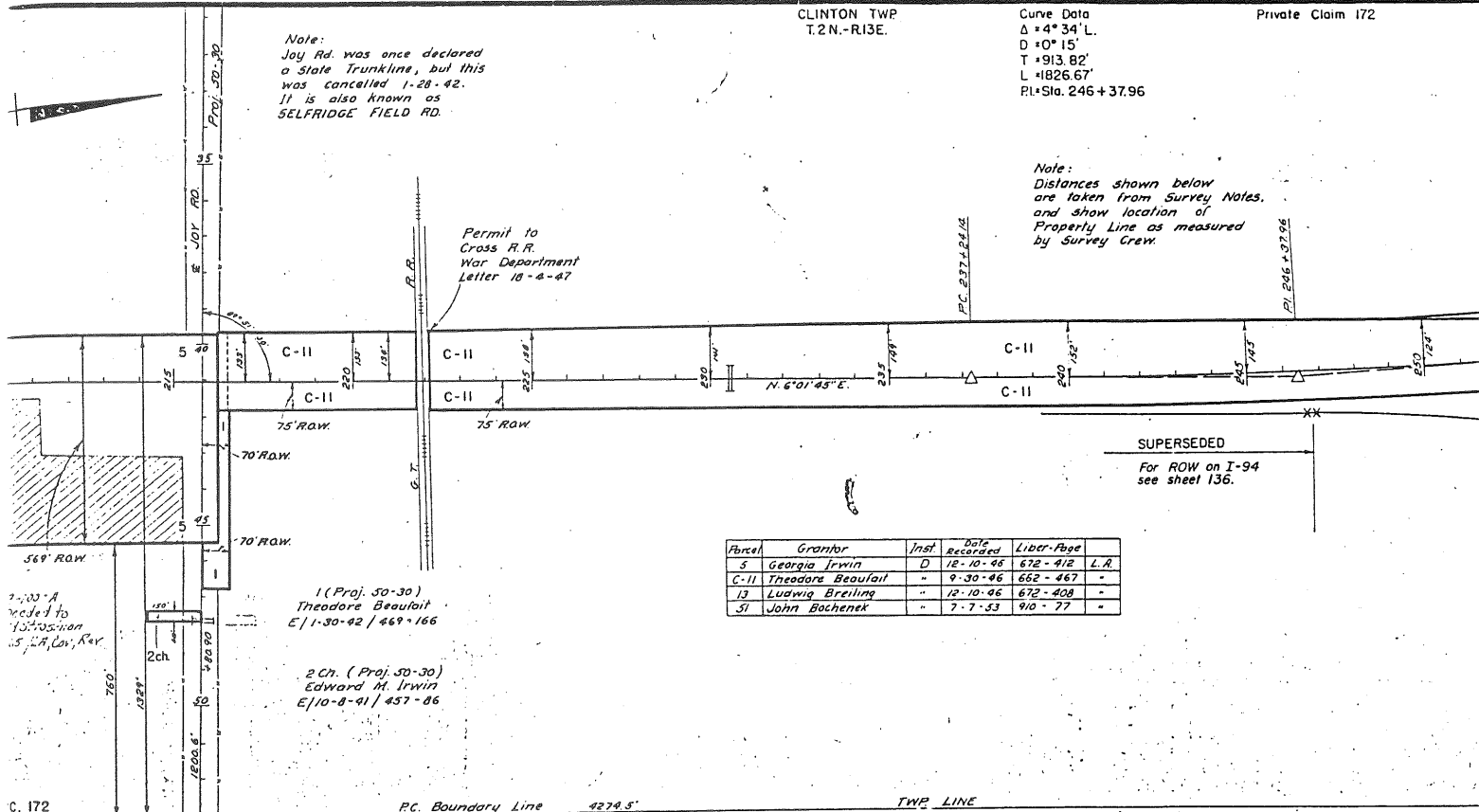
Curve Data
 $\Delta = 4^{\circ} 34' L.$
 $D = 0^{\circ} 15'$
 $T = 913.82'$
 $L = 1826.67'$
 $PI = Sta. 246 + 37.96$

Private Claim 172

Note:
 Joy Rd. was once declared
 a State Trunkline, but this
 was cancelled 1-28-42.
 It is also known as
 SELFRIDGE FIELD RD.

Note:
 Distances shown below
 are taken from Survey Notes,
 and show location of
 Property Line as measured
 by Survey Crew.

Permit to
 Cross R.R.
 War Department
 Letter 18-a-47



351

397.91

97.91

SNOVER

400

25-003

24-004

ROSSO

23-005

351

(L38-P13)

EDSEL FORD

140

100

94.65

33

185.82

33

HALL

REV. 11-86
REV. 2-85
REV. 8-57

Copyright 1974
MACOMB COUNTY, MICHIGAN

SCALE: 1" = 100'

S.W. COR.

9-31E

CHES
W 1/2 SW 1/4

B-56H

512.80

HWY.

N.E. COR.

3.99

7.91

EXPWY.

11-1 D

003
23 00

970 78

11-10

11-10

Copyright 1973

MACOMB COUNTY, MICHIGAN

S.E. COR.

SCALE 1" = 100'

MACOMB TWP.

1/4 SEC. 36 T.3N. R.13E.

8-36H

12 - 6

A
NW. COR.

219

WM.

P.

ROSSO

354.50

EXPWY.