
**MACOMB COUNTY 2014 REMONUMENTATION GRANT
PROGRAM FOR CLINTON TOWNSHIP
I-02**

Section One

Index

Pictures in the four cardinal directions; temporary monumentation and after setting the required monumentation.

Section Two

Surveyor's Report

Land Corner Recordation Certificate

Section Three

1-3. Field Notes

4. Map of Clinton Township - 1817

5. Map of Clinton Township - 1875

6. Map of Clinton Township - 1895

7. Map of Clinton Township - 1916

8. Map of Clinton Township - 2006

9-10. Undated Addressograph Department drawing sheets

11. Macomb County Composite Map 11-03H

12. Macomb County Composite Map 11-02E

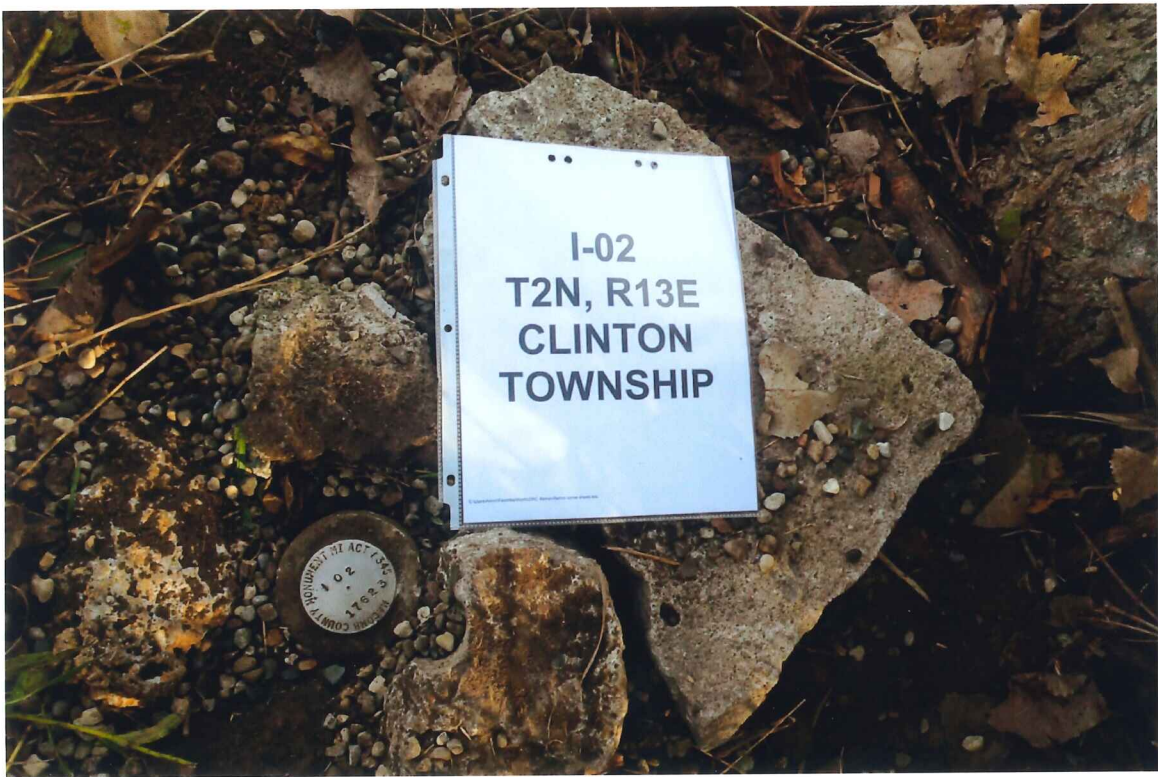
13. Macomb County Composite Map 11-02A

14. Macomb County Composite Map 11-03-D

Section Four

1-2. Copy of GLO field notes for I-02

3. Legal description for Tax Item #11-03-426-001



I-02
T2N, R13E
CLINTON
TOWNSHIP

I-02
CLINTON COUNTY



I-02
T2N, R11E
CLINTON
TOWNSHIP





Page 1 of 3
REMONUMENTATION
LAND CORNER RECORDATION CERTIFICATE
Filing Requirement of Act 74, Mich. P.A. 1970

For corners in

Macomb County Located In: Clinton Township Corner Code I-02

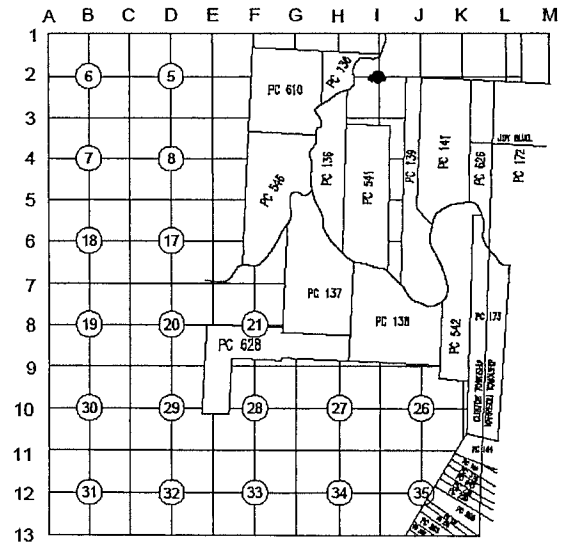
Table with 5 columns: Survey Type, T, R, E, I-02. Rows include Public Land Survey, Property Controlling in Section, and Miscellaneous Property in Sec.

4138425 PAGE 1 OF 2
LIBER 23116 PAGE 293
11/18/2014 08:25:30 A.M.
MACOMB COUNTY, MI SEAL
CARNELLA SABAUGH, REGISTER OF DEEDS

Register of Deeds Stamp & File Number

4. Lot No. Recorded Plat
5. Private Claims

I, Huston K. Kennedy, in a field survey on August 26, 2014 do hereby state that under requirements of P.A. 74, Michigan P.A. of 1970, the corner points mentioned in lines 1 and 2 above were in conformance with regulations and rules therefore as required in the current manual of survey instructions of the United States Department of the Interior, Bureau of Land Management or by a decree of a Court of Law and/or that the corner points mentioned in lines 3, 4 and 5 above were in conformance with the rules of the Michigan Board of Land Surveyors or by a Decree of a Court of Law; established, re-established, monumented, recovered, found as expressed below:



NOTE: Not more than 2 corners, all in the same town and range, may be recorded on this certificate.

A. Description of original monument and accessories and/or subsequent restoration:

1.) 1817-1818-Preston, D.S., Set Post 14" Beech S23°W 22 links; 8" Black Ash N84°E 21 links

B. Description of corner evidence found and/or method applied in restoring or reestablishing corner:

2014-Kennedy Surveying, Inc. - Kennedy, PS #17623 - The original government post has been obliterated, the witness trees have been destroyed and the corner has not been perpetuated. The 1875, 1895, 1916 and 2006 maps of Clinton Township shows common ownership across the line common with Sections 2 & 3 that is north of Dunham Road and south of the Clinton River. I am therefore, treating I-02 as an obliterated corner, holding the northeast corner of Tax Item #11-03-426-001 as I-02. Found 1/2" iron rod near the existing centerline of Dunham Road extending in an east and west direction, which has a bituminous surface. The found 1/2" iron rod falls 7.57 feet west of the line between I-01 and I-03. I extended a line from I-03 north through the found 1/2" iron rod in Dunham Road, a distance of 1323.50 feet and set a 1/2" iron rod as temporary monumentation for I-02. The distance north of Dunham Road is 1323.50 feet, which is cited on the property description for tax item #11-03-426-001.

The re-established corner falls on the south edge of an open field that is being used by the Fraser Flying Club. The corner falls near the top of a drainage ditch extending to the north, south and east with a fence line (steel fence post) extending approximately 500 feet to the east. The corner also falls 23 feet ± east of a gravel drive extending in a north and south direction.

I accept the re-established location of I-02 as the best position to be perpetuated.

RECORDED, UNRECORDED AND FIELD MEASUREMENTS BETWEEN CORNERS (see back side of)

C. Description of monument for corner and accessories established to perpetuate locating the position of the corner: I-02 I replaced the temporary 1/2" iron rod w/4" diameter concrete monument with 1/2" iron rod 36" long with 2" diameter brass cap stamped "Macomb County Monument Act #345, I-02 PS #17623"
N40°E 2.30' Set #60 nail w/washer stamped "Macomb County Witness Tag" NW face 15" Poplar
S10°E 10.69' east face of 3" diameter steel fence post (east end of the fence)
S70°W 31.82 SE face 4" diameter steel gate post (west end of the gate)
N40°W 82.50' Set 1/2" x-18" iron rod with blue plastic cap stamped "MC REMON WIT POINT" 2' west of gravel drive



(see back side LORC for sketch)

The selected location is accepted by me and is generally accepted by Professional Surveyors as the best available evidence of the position of the corner as being perpetuated.

Signed by: [Signature] Date October 9, 2014

Surveyor's Michigan License No.: 17623

ACCEPTED BY THE MACOMB COUNTY SURVEY PEER GROUP AS THE OFFICIAL CORNER UNDER MICHIGAN PUBLIC ACT 345 OF 1990 AT A MEETING HELD ON 10-7-2014
MARTIN C. DINN P.S. CHAIRMAN

**2014
MACOMB COUNTY REMONUMENTATION GRANT
PROGRAM FOR CLINTON TOWNSHIP**

I-02

Prepared by:
Kennedy Surveying, Inc.
105 North Washington Street
Oxford, Michigan 48371
14-7208 (96-4013)

**Sources of Information Researched
For Macomb County 2014 Remonumentation Grant
Program For Clinton Township**

- 1) GLO Notes
- 2) Act 74 Recorded LCRC
- 3) Act 132 Recorded Surveys
- 4) Personal History and Records
- 5) Unrecorded LCRC's and Surveys
- 6) Letters to the Following, Requesting unrecorded information

- a) Anderson, Eckstein & Westrick
- b) BMJ Engineers & Surveyors
- c) Community Engineering
- d) David Little Land Surveyor
- e) David P. Smith & Associates, Inc.
- f) Fenn & Associates Surveying, Inc.
- g) George Jerome & Company
- h) Grant Ward Surveyors
- i) Great Lakes Geomatics
- j) JCK Group, Inc.
- k) Kem-Tec Surveying
- l) King Surveying & Associates, Inc.
- m) Lehner Associates, Inc.
- n) Metco Land Sea Corp.
- o) Milletics & Associates
- p) R. J. Donnelly & Associates, Inc.
- q) R. A. Duthler Land Surveyor LLC
- r) Reichert Surveying
- s) Road Commission for Macomb County
- t) Rowe Professional Services
- u) Urban Land Consultants, L.L.C.
- v) Williams & Gorinac Associates

I-02

GLO SURVEY HISTORY

Researching the government survey records for Macomb County shows that the south and east lines of Clinton Township were surveyed and the township was subdivided into sections with closing corners set on the north and west township lines by William Preston, D.S. from 1817-1818. A post was set at the West ¼ corner of Section 2 and the East ¼ corner of Section 3.

<u>WITNESSES:</u>	14" Beech	S23°W	22 Links
	8" Black Ash	N84°E	21 Links

EXISTING FIELD CONDITIONS

The original government post has been obliterated, the witness trees have been destroyed and the corner has not been perpetuated. The 1875, 1895, 1916 and 2006 maps of Clinton Township shows common ownership across the line common with Sections 2 & 3 that is north of Dunham Road and south of the Clinton River. I am therefore, treating I-02 as an obliterated corner, holding the northeast corner of Tax Item #11-03-426-001 as I-02. Found ½" iron rod near the existing centerline of Dunham Road extending in an east and west direction, which has a bituminous surface. The found ½" iron rod falls 7.57 feet west of the line between I-01 and I-03. I extended a line from I-03 north through the found ½" iron rod in Dunham Road, a distance of 1323.50 feet and set a ½" iron rod as temporary monumentation for I-02. The distance north of Dunham Road is 1323.50 feet, which is cited on the property description for tax item #11-03-426-001.

The re-established corner falls on the south edge of an open field that is being used by the Fraser Flying Club. The corner falls near the top of a drainage ditch extending to the north, south and east with a fence line (steel fence post) extending approximately 500 feet to the east. The corner also falls 23 feet ± east of a gravel drive extending in a north and south direction.

RECORDED AND UNRECORDED LCRC'S AND CERTIFICATE OF SURVEYS

Researching the Macomb County Records for Land Corner Recordation Certificates (LCRC), Certificate of Survey and documents that could effect the location of this corner shows that nothing has been recorded.

RECORDED, UNRECORDED AND FIELD MEASUREMENTS BETWEEN CORNERS

I-02 to I-01

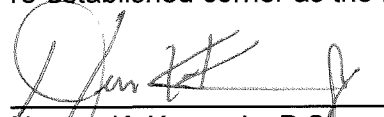
GLO = 40 chains or 2640.00 Ft.
N04°58'54" W 2838.38 Ft. (mea. 2014)

I-02 to I-03

GLO = 40 chains or 2640.00 Ft.
S05°36'44" W 2641.63 Ft. (mea 2014)

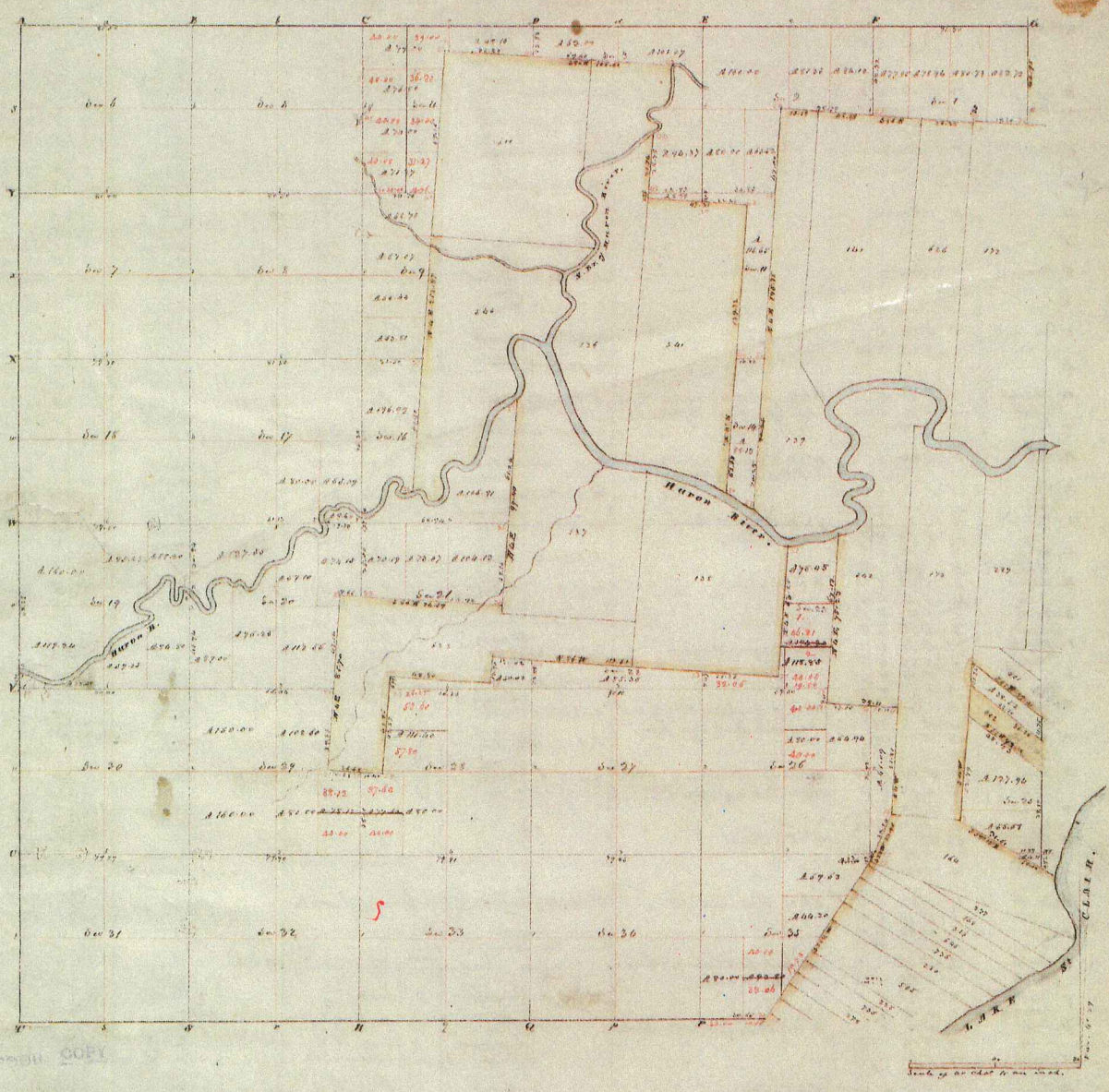
SURVEYOR'S RECOMMENDATION

For the last 100 years there has been no evidence that this corner has been perpetuated due to the common ownership across the line common to Sections 2 and 3. The corner was re-established using the northeast corner of Tax #11-03-426-001 as I-02. I therefore recommend to the Macomb County Survey Peer Group that they accept the re-established corner as the best evidence of the corner position to be perpetuated.


Huston K. Kennedy, P.S.
Kennedy, Surveying, Inc.

-7208

2014
MACOMB COUNTY REMONUMENTATION
GRANT PROGRAM FOR CLINTON TOWNSHIP
I-02



Township N: II North , Range N: XIII East of Mer. (Mich. Ter.) surveyed by W. B. Peckton . 1817

Description of the soil on the interior sectional lines

Section	Quality of	Section	Quality of
6-5	Light sandy loam. 1/2 blk. soil. Sugar. 1/2 acre	29-20	Light clay loam. 1/2 blk. soil. Sugar.
6-7	Light soil. 1/2 blk. soil. Sugar. 1/2 acre	29-21	Same
7-5	Same (hard clay)	29-22	1/2 of the blue loam
7-15	Same	29-23	1/2 of same. 1/2 blk. soil. Sugar. 1/2 acre
12-14	Medium soil. 1/2 blk. soil. Sugar. 1/2 acre	29-24	Light, hard clay. 1/2 blk. soil. Sugar. 1/2 acre
12-15	Same	29-25	Loam. 1/2 blk. soil.
17-20	Light soil. 1/2 blk. soil. Sugar. 1/2 acre	29-26	Same
4-5	Light soil. 1/2 blk. soil. Sugar. 1/2 acre	29-27	Same
5-1	Same	29-28	Same
5-2	Same (1/2 blk. soil)	29-29	Same with dark. Sugar. 1/2 acre
5-3	Light soil. 1/2 blk. soil. Sugar. 1/2 acre	29-30	Same
14-15	Light soil. 1/2 blk. soil. Sugar. 1/2 acre	29-31	Same
17-20	Light soil. 1/2 blk. soil. Sugar. 1/2 acre	29-32	Same
2-2	Light soil. 1/2 blk. soil. Sugar. 1/2 acre	29-33	Same
2-3	Same	29-34	Same
2-4	Light soil. 1/2 blk. soil. Sugar. 1/2 acre	29-35	Same
2-5	Same	29-36	Same
12-14	Light soil. 1/2 blk. soil. Sugar. 1/2 acre		

MAP OF CLINTON

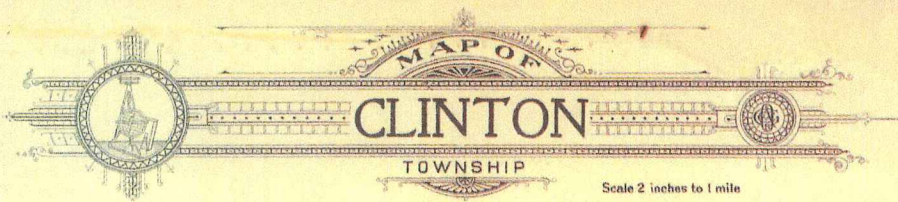
Township 2 North Range 13 East

Scale 2 Inches to one Mile.

of the Meridian of Michigan

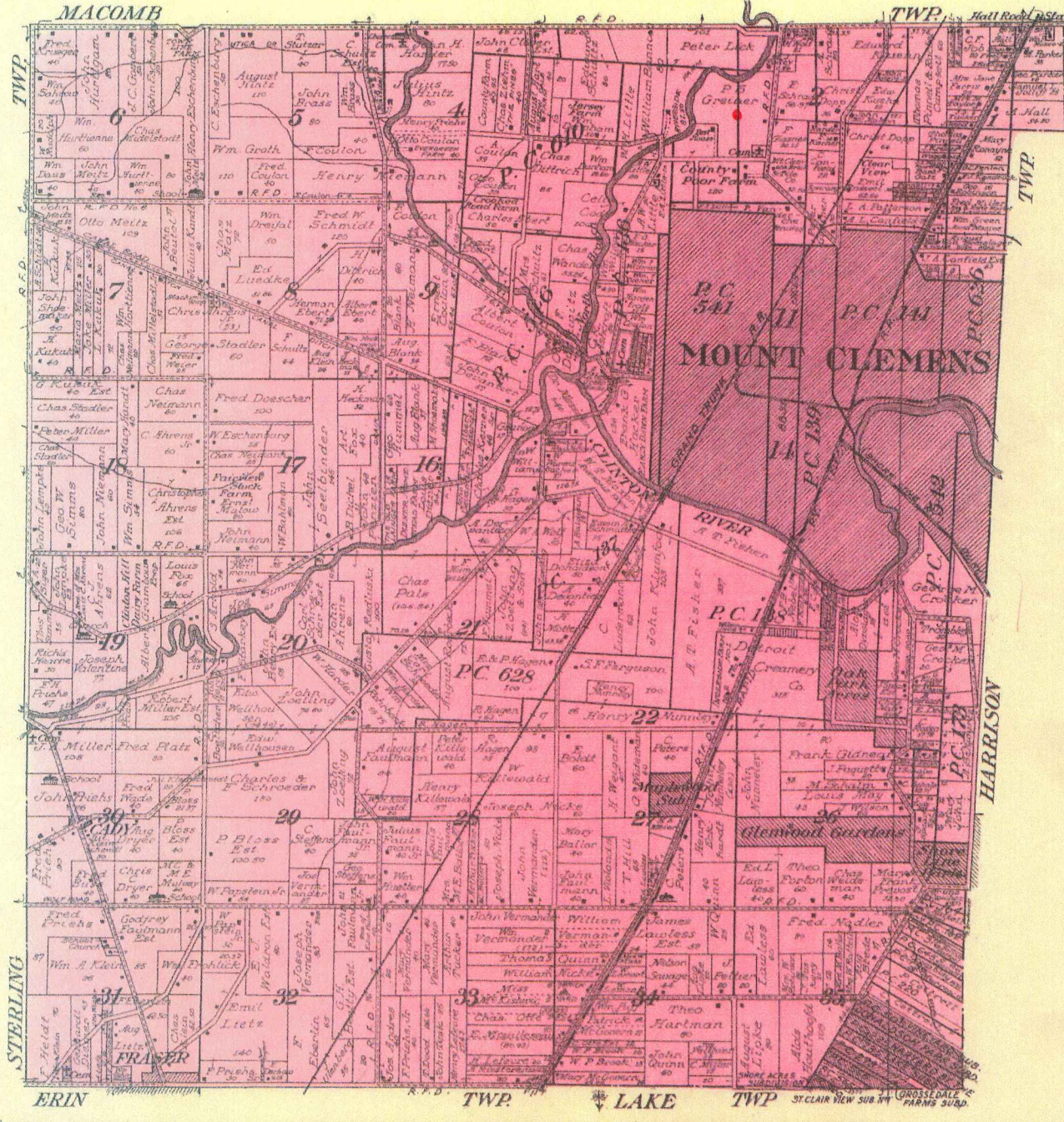


6 1895



MAP OF
CLINTON
 TOWNSHIP
 Scale 2 inches to 1 mile

Fractional Township 2 North, Range 13 East of the Michigan Meridian

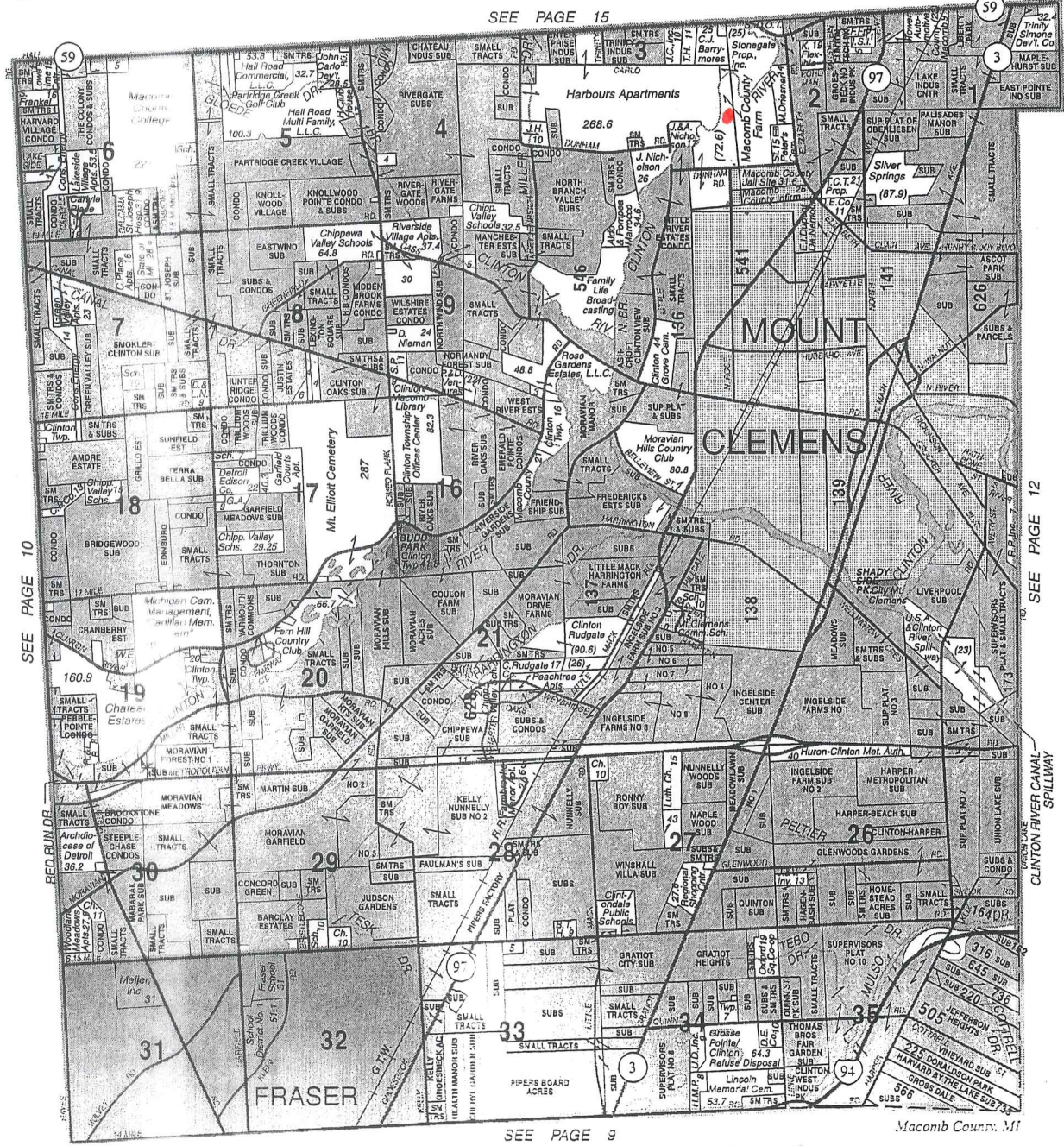


⑦ 1916

CLINTON - CITY OF FRASER

T.2N.-R.13E.

SEE PAGE 15



SEE PAGE 10

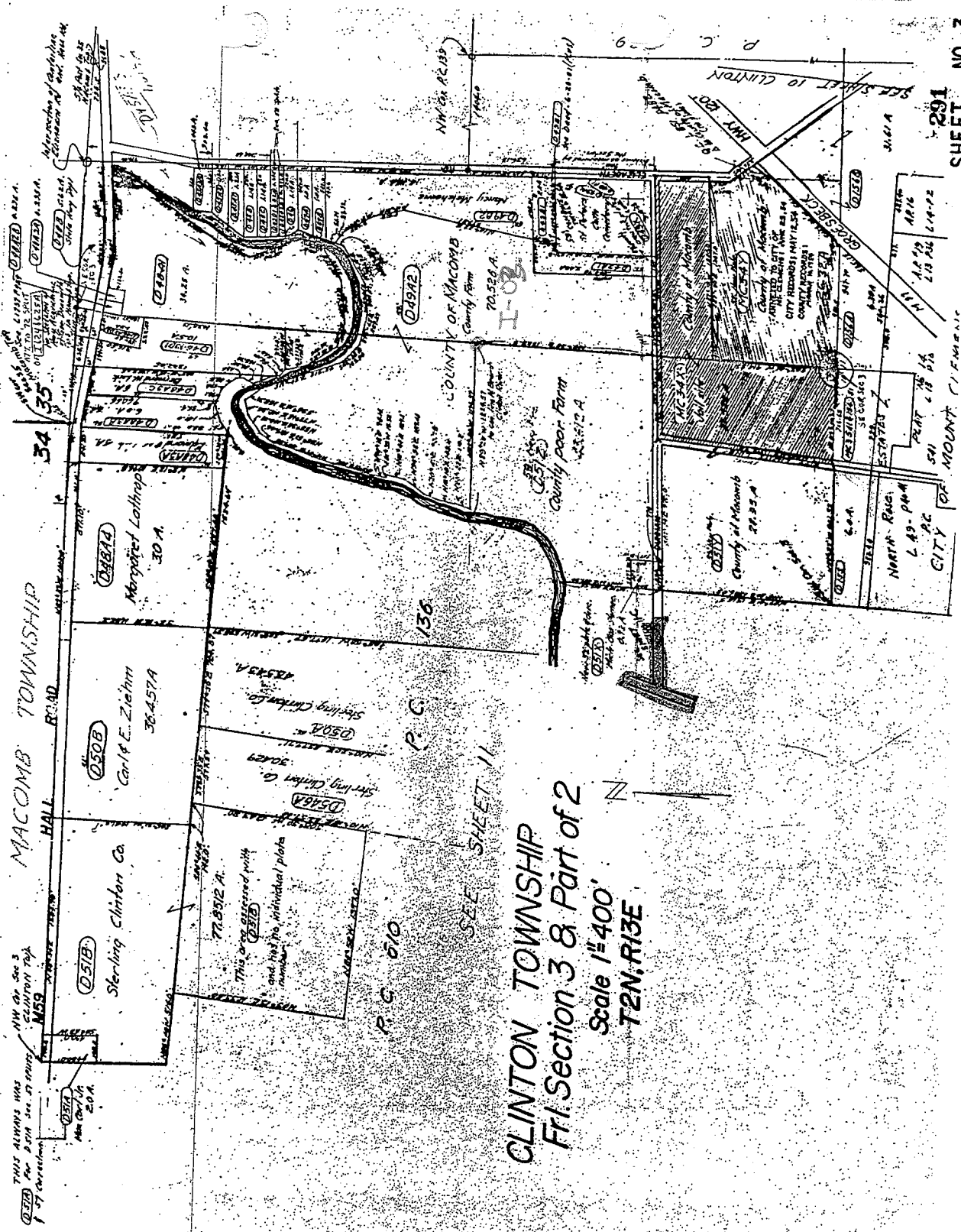
SEE PAGE 12

SEE PAGE 9

Macomb County, MI

Reproduced with permission of Rockford Map Publishers, Inc.
Rockford, Illinois

8



MACOMB TOWNSHIP
HALL ROAD

THIS ALWAYS WAS
NW 1/4 SEC 3
CLINTON TWP
M59

SECTION 3
CLINTON TWP
M59

CLINTON TOWNSHIP
Part of 2
Section 3 & 8
Scale 1"=400'
T2N, R13E

SEE SHEET 11

291
SHEET NO 2

CITY OF MOUNT CLEMENS

SEE SHEET 10 CLINTON

SEE SHEET 11

SEE SHEET 12

SEE SHEET 13

SEE SHEET 14

SEE SHEET 15

SEE SHEET 16

SEE SHEET 17

SEE SHEET 18

SEE SHEET 19

SEE SHEET 20

SEE SHEET 21

SEE SHEET 22

SEE SHEET 23

SEE SHEET 24

SEE SHEET 25

SEE SHEET 26

SEE SHEET 27

SEE SHEET 28

SEE SHEET 29

SEE SHEET 30

SEE SHEET 31

SEE SHEET 32

SEE SHEET 33

SEE SHEET 34

SEE SHEET 35

SEE SHEET 36

SEE SHEET 37

SEE SHEET 38

SEE SHEET 39

SEE SHEET 40

SEE SHEET 41

SEE SHEET 42

SEE SHEET 43

SEE SHEET 44

SEE SHEET 45

SEE SHEET 46

SEE SHEET 47

SEE SHEET 48

SEE SHEET 49

SEE SHEET 50

SEE SHEET 51

SEE SHEET 52

SEE SHEET 53

SEE SHEET 54

SEE SHEET 55

SEE SHEET 56

SEE SHEET 57

SEE SHEET 58

SEE SHEET 59

SEE SHEET 60

SEE SHEET 61

SEE SHEET 62

SEE SHEET 63

SEE SHEET 64

SEE SHEET 65

SEE SHEET 66

SEE SHEET 67

SEE SHEET 68

SEE SHEET 69

SEE SHEET 70

SEE SHEET 71

SEE SHEET 72

SEE SHEET 73

SEE SHEET 74

SEE SHEET 75

SEE SHEET 76

SEE SHEET 77

SEE SHEET 78

SEE SHEET 79

SEE SHEET 80

SEE SHEET 81

SEE SHEET 82

SEE SHEET 83

SEE SHEET 84

SEE SHEET 85

SEE SHEET 86

SEE SHEET 87

SEE SHEET 88

SEE SHEET 89

SEE SHEET 90

SEE SHEET 91

SEE SHEET 92

SEE SHEET 93

SEE SHEET 94

SEE SHEET 95

SEE SHEET 96

SEE SHEET 97

SEE SHEET 98

SEE SHEET 99

SEE SHEET 100

SEE SHEET 101

SEE SHEET 102

SEE SHEET 103

SEE SHEET 104

SEE SHEET 105

SEE SHEET 106

SEE SHEET 107

SEE SHEET 108

SEE SHEET 109

SEE SHEET 110

SEE SHEET 111

SEE SHEET 112

SEE SHEET 113

SEE SHEET 114

SEE SHEET 115

SEE SHEET 116

SEE SHEET 117

SEE SHEET 118

SEE SHEET 119

SEE SHEET 120

SEE SHEET 121

SEE SHEET 122

SEE SHEET 123

SEE SHEET 124

SEE SHEET 125

SEE SHEET 126

SEE SHEET 127

SEE SHEET 128

SEE SHEET 129

SEE SHEET 130

SEE SHEET 131

SEE SHEET 132

SEE SHEET 133

SEE SHEET 134

SEE SHEET 135

SEE SHEET 136

SEE SHEET 137

SEE SHEET 138

SEE SHEET 139

SEE SHEET 140

SEE SHEET 141

SEE SHEET 142

SEE SHEET 143

SEE SHEET 144

SEE SHEET 145

SEE SHEET 146

SEE SHEET 147

SEE SHEET 148

SEE SHEET 149

SEE SHEET 150

SEE SHEET 151

SEE SHEET 152

SEE SHEET 153

SEE SHEET 154

SEE SHEET 155

SEE SHEET 156

SEE SHEET 157

SEE SHEET 158

SEE SHEET 159

SEE SHEET 160

SEE SHEET 161

SEE SHEET 162

SEE SHEET 163

SEE SHEET 164

SEE SHEET 165

SEE SHEET 166

SEE SHEET 167

SEE SHEET 168

SEE SHEET 169

SEE SHEET 170

SEE SHEET 171

SEE SHEET 172

SEE SHEET 173

SEE SHEET 174

SEE SHEET 175

SEE SHEET 176

SEE SHEET 177

SEE SHEET 178

SEE SHEET 179

SEE SHEET 180

SEE SHEET 181

SEE SHEET 182

SEE SHEET 183

SEE SHEET 184

SEE SHEET 185

SEE SHEET 186

SEE SHEET 187

SEE SHEET 188

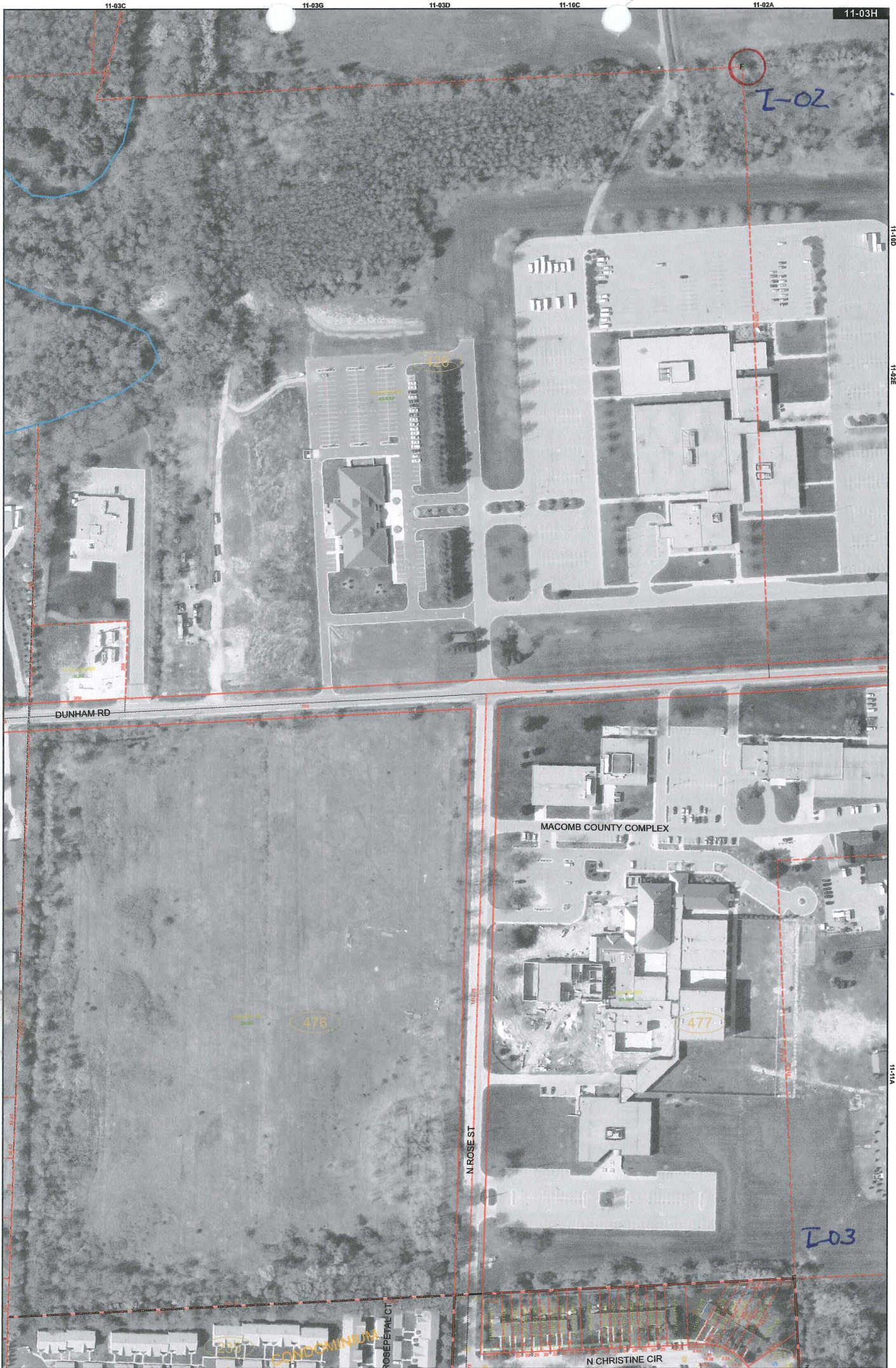
SEE SHEET 189

SEE SHEET 190

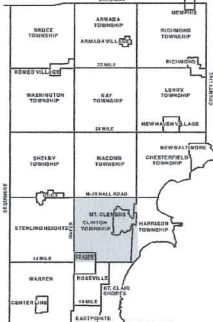
SEE SHEET 191

SEE SHEET 192

SEE SHEET 193



Date of Photography: Spring 2008
 100 50 0 100 200 Feet



CLINTON TWP SHEET INDEX

SUBDIVISION	HALL
13-19-302-018	13-19-302-018
13-19-302-019	13-19-302-019
13-19-302-020	13-19-302-020
13-19-302-021	13-19-302-021
13-19-302-022	13-19-302-022
13-19-302-023	13-19-302-023
13-19-302-024	13-19-302-024
13-19-302-025	13-19-302-025
13-19-302-026	13-19-302-026
13-19-302-027	13-19-302-027
13-19-302-028	13-19-302-028
13-19-302-029	13-19-302-029
13-19-302-030	13-19-302-030
13-19-302-031	13-19-302-031
13-19-302-032	13-19-302-032
13-19-302-033	13-19-302-033
13-19-302-034	13-19-302-034
13-19-302-035	13-19-302-035
13-19-302-036	13-19-302-036
13-19-302-037	13-19-302-037
13-19-302-038	13-19-302-038
13-19-302-039	13-19-302-039
13-19-302-040	13-19-302-040
13-19-302-041	13-19-302-041
13-19-302-042	13-19-302-042
13-19-302-043	13-19-302-043
13-19-302-044	13-19-302-044
13-19-302-045	13-19-302-045
13-19-302-046	13-19-302-046
13-19-302-047	13-19-302-047
13-19-302-048	13-19-302-048
13-19-302-049	13-19-302-049
13-19-302-050	13-19-302-050
13-19-302-051	13-19-302-051
13-19-302-052	13-19-302-052
13-19-302-053	13-19-302-053
13-19-302-054	13-19-302-054
13-19-302-055	13-19-302-055
13-19-302-056	13-19-302-056
13-19-302-057	13-19-302-057
13-19-302-058	13-19-302-058
13-19-302-059	13-19-302-059
13-19-302-060	13-19-302-060
13-19-302-061	13-19-302-061
13-19-302-062	13-19-302-062
13-19-302-063	13-19-302-063
13-19-302-064	13-19-302-064
13-19-302-065	13-19-302-065
13-19-302-066	13-19-302-066
13-19-302-067	13-19-302-067
13-19-302-068	13-19-302-068
13-19-302-069	13-19-302-069
13-19-302-070	13-19-302-070
13-19-302-071	13-19-302-071
13-19-302-072	13-19-302-072
13-19-302-073	13-19-302-073
13-19-302-074	13-19-302-074
13-19-302-075	13-19-302-075
13-19-302-076	13-19-302-076
13-19-302-077	13-19-302-077
13-19-302-078	13-19-302-078
13-19-302-079	13-19-302-079
13-19-302-080	13-19-302-080
13-19-302-081	13-19-302-081
13-19-302-082	13-19-302-082
13-19-302-083	13-19-302-083
13-19-302-084	13-19-302-084
13-19-302-085	13-19-302-085
13-19-302-086	13-19-302-086
13-19-302-087	13-19-302-087
13-19-302-088	13-19-302-088
13-19-302-089	13-19-302-089
13-19-302-090	13-19-302-090
13-19-302-091	13-19-302-091
13-19-302-092	13-19-302-092
13-19-302-093	13-19-302-093
13-19-302-094	13-19-302-094
13-19-302-095	13-19-302-095
13-19-302-096	13-19-302-096
13-19-302-097	13-19-302-097
13-19-302-098	13-19-302-098
13-19-302-099	13-19-302-099
13-19-302-100	13-19-302-100

DESCRIPTION OF PERMANENT REAL ESTATE INDEX NUMBER

13-19-302-018

AREA NUMBER: 13-19-302-018
 SUB AREA NUMBER: 018
 BLOCK NUMBER: 302
 PARCEL NUMBER: 018

Legend
 - Platted Area Boundary Line
 - Property Line
 - Property Split Line
 - Property Combined Line
 - Township Boundary Line
 - Traverse Line
 - Dimension Extent Marks
 - Dimension Start Marks

11-03H

MT. CLEMENS & CLINTON TWP.
 E. 1/2 S.E. 1/4 SEC. 3 T.2N. R.13E.

Source: Macomb County Department of Planning and Economic Development - 2008 Digital Orthophotography Project - Parcel Conversion Project

Note: Digital Orthophotography horizontal positioning accuracy is 3 feet. Parcel boundary lines should be considered a graphical representation and not in any way a legal survey or engineering document. In general, the horizontal positioning and length accuracy is within 15 feet.

This map is intended for general planning purposes. Site specific evaluation should be verified by field inspection. This is a work in progress and may contain errors and omissions. Please report any potential revisions to (586)469-5285.



GISs MACOMB COUNTY
 Planning and Economic
 Development Department

Published: Jan 28, 2009

14

56.00 a Spruce 20 in dia
41.13 Intersected Harmon River and Make
Corner for Section parcel 17, 120 on a
maple 1 in dia Standing on the bank
of Harmon Land level good 2^d rate
Timber W Oak Birch Sugar + Lym
Undergrowth Spice Oak Buckley Oak

South Bottom Sections 4+3

12.74 a W. Oak 30 in dia
15.49 Intersected private Claims 36, 23 Old
East from Corner of Lot No. 610 Crossed
to John Connor
Land part dry 2^d rate Timber Birch
W. Oak B+W. Oak Sugar +
Undergrowth Birch Buckley Oak + c

East Bottom Sections 4+7

65.0 a Spruce 60 links wide Corner South
20.60 a W. Oak 30 in dia
34.70 Intersected Private Claims 920 South
from N.W. Cor of Lot No. 610 Confirmed
to John Connor
Land dry and level very good 2^d
rate Timber W. Oak Ash Sugar Lym
Undergrowth Spice + c

East Bottom Sect. 9+10

31.50 Intersected West line of Survey No. 541
65.50 North of SW corner of Lot
W Oak 10 Corner tree

South Bottom Sections 2+2

25.00 N. Branch of Harmon River
45.00 a Spruce 10 in dia

Beech 14 inches diam bears N 30 E 10 links
also a Beech 8 in dia bears N 30 E 21 links
61.47 a W. Oak 10 in dia
80.00 Set front for Section 32, 10, 11 from
which an Elm 11 in dia bears N 30 E 9
links also a B. Oak 13 in bears S 30 E 10 links
1st half mile front dry 2^d side best
half mile same Timber W Oak Beech
Sugar Poplar Spruce Undergrowth Spruce

West Between Sections 3 & 10
24.97 Int^d Private Claims N 71 S 6 Confined
to Peter Connor 2.96 from str N 71
Corner 541
Set front for fract section 3 & 10 from
which a B. Oak 12 in dia bears N 30 E 10
links also a B. Oak 12 in dia bears
S 72 E 9 links dia
Land level and swampy 3^d side
Timber Spruce a B. Alder & Elm

South Between Sections 10 & 11
4.08 Int^d Private Claims 22 22
West of Corner of Lot No 541 Confined
to Christian Clemens
Land very wet 3^d side
Set front for cor. of fract section 10 & 11 from
which a Maple 14 in diam bears
N 30 W 45 links dist also a Maple 13 in
diam bears N 21 E 38 links dist

East Between Sections 2 & 11
34.85 Int^d Private Claims 43 00 from str N 71
Corner of Lot No 139 Confined to Peter Connor
and Maple Corner for Section 2 & 11

Legal Description

T2N,R13E SEC 3 COMM AT SE COR FRL SEC 3;
TH N87°32'W 706.65 FT TO CEN LINE N ROSE ST;
TH N06°41'E 1312.75 FT ALG CEN LINE N ROSE
ST TO CEN LINE DUNHAM RD, BEING PT OF BEG;
TH N87°54'W 770.0 FT ALG CEN LINE DUNHAM
RD; TH N07°31'E 200.0 FT; TH N87°50'W 200.0 FT
TO W LINE SEC 3; TH N06°20'E 489.50 FT ALG W
LINE SEC 3 TO CEN LINE OF N BRANCH OF
CLINTON RIVER; TH UP STREAM ALG CEN LINE
OF N BRANCH OF CLINTON RIVER, TO A PT
WHICH IS N0°38'E 1323.50 FT & N89°20'W
1224.57 FT FROM INTER OF E LINE SEC 3 & THE
CEN LINE OF DUNHAM RD; TH S89°20'E 1224.57
FT TO E LINE SEC 3; TH S0°38'W 1323.50 FT TO
CEN LINE DUNHAM RD; TH N87°58'W ALG CEN
LINE DUNHAM RD TO PT OF BEG. 43.812 A.

OK

Sales Info.

Delinquent ?

Plats

403

W