

C152231

LAND CORNER RECORDATION CERTIFICATE
Filing Requirement of Act 74, Mich. P.A. 1970

94 DEC 14 AM 10:52

CARMEL M. BARRAUGH
REGISTRAR OF DEEDS
MACOMB COUNTY, MI

For corners in
MACOMB
(County)

Located In: Clinton Township Corner Code ##

- 1. Public Land Survey T 2N R 13E H-1
2. Property Controlling in Section S T R
3. Miscellaneous S T R
Property in Sec. S T R

LIBER 6527 PAGE 808

Register of Deeds Stamp & File Number

- 4. Lot No. Recorded Plat
5. Private Claims

Grid table with columns A-M and rows 2-13. A dot is marked at the intersection of column G and row 3.

I, Randy Kolehouse, in a field survey on Sept. 28, 1994, do hereby certify that under requirements of P.A. 74, Michigan P.A. of 1970, the corner points mentioned in lines 1 and 2 above were in conformance with regulations and rules therefore as required in the current manual of survey instructions of the United States Department of the Interior, Bureau of Land Management or by a decree of a Court of Law and/or that the corner points mentioned in lines 3, 4 and 5 above were in conformance with the rules of the Michigan Board of Land Surveyors or by a Decree of a Court of Law; established, re-established, monumented, re-monumented, recovered, found as expressed below:

NOTE: Not more than 4 corners, all in the same town and range, may be recorded on this certificate.

A. Description of original monument and accessories and/or subsequent restoration:

H-1 1817 G.L.O. Notes Wampler NA Post
Enterprise Industrial Sub. L. 85 Plats P 1 NA
No other information on record.

B. Description of corner evidence found and/or method applied in restoring or reestablishing corner:

H-1 Enterprise Industrial Sub. shows dist. of 2797.59 West to G-1, no description of corner and no witnesses. G.L.O. set post at midpoint of section line. Decided to set H-1 at midpoint on line between H-13 and I-13 T3N R13E. Measure West 577.09' to H-13 T3N R13E (G.L.O. 574.2)

Measure E 2679.45 to I-1 (G.L.O. 2640)
Measure W 2679.45 to G-1 (G.L.O. 2640)

ACCEPTED BY THE MACOMB COUNTY SURVEY PEER GROUP AS THE OFFICIAL CORNER UNDER MICHIGAN PUBLIC ACT 345 OF 1990 AT A MEETING HELD ON 10-4-94

William E. Soderberg
WILLIAM E. SODERBERG, P.S., CHAIRMAN

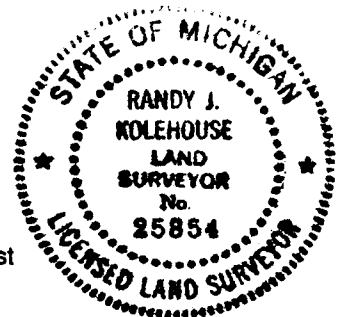
This point is 118.14 West of N 1/4 Section 3 as shown in Enterprise Industrial Sub.

C. Description of monument for corner and accessories established to perpetuate locating the position of the corner:

H-1 I replaced a 3/4" x 24" Iron Rod w/2" diameter aluminum cap stamped "Macomb County Monument MI Act 345 #25854," also set Monument Box.

- PK & Macomb Co. Remon. Tag in W Face Util. Pole S 19° E 64.78'
PK & Macomb Co. Remon. Tag in NW Face Util. Pole S 50° W 130.10'
PK & Macomb Co. Remon. Tag in SW Face 12" Maple N 38° W 96.29'
PK & Macomb Co. Remon. Tag in W Face 15" Oak N 08° E 71.34'
PK & Macomb Co. Remon. Tag in NW Face 15" Pine N38° E 107.96'
Top C/L Hyd S 12° E 45.12'

The selected location is accepted by me and is generally accepted by professional surveyors as the best available evidence of the position of the original corner.



Signed by Randy J. Kolehouse
Surveyor's Michigan License No. 25854

Date 10/14/94

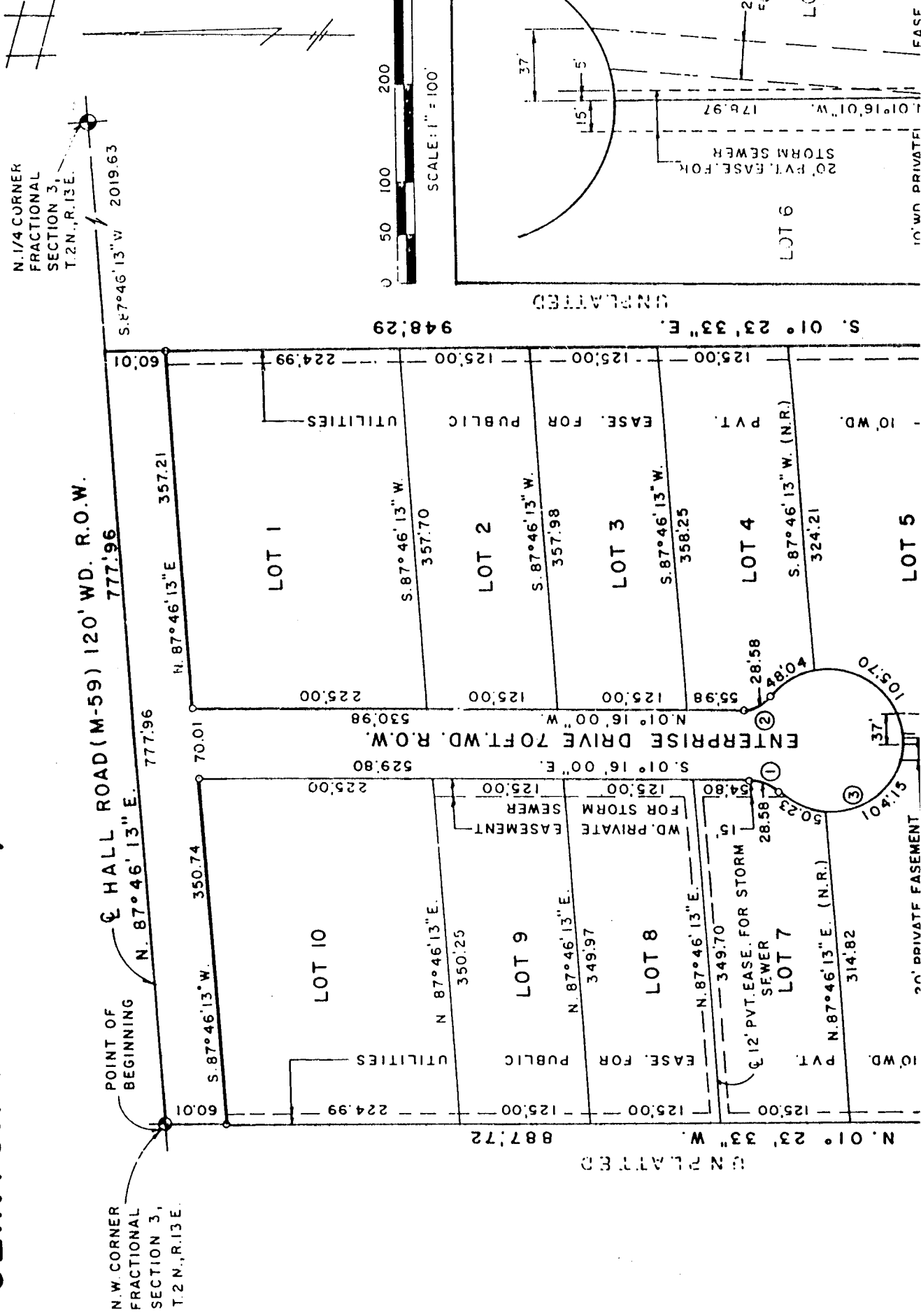
ENTERPRISE INDUSTRIAL SUBDIVISION

PART OF N.W. 1/4 FRACTIONAL SECTION 3, T.2N., R.13E.,

CLINTON TOWNSHIP, MACOMB COUNTY, MICHIGAN

Register # B237988

L.S.P. 1
G-1
H-1



SURVEYOR'S CERTIFICATE

I, Robert L. Smith, Surveyor, Certified that I have surveyed, divided and measured as follows:

ENTERPRISE INDUSTRIAL

Being part of Northwest 1/4 of Fractional Section 3, Township, Macomb County, Michigan as shown on the plat of the Survey of the Northwest 1/4 of Fractional Section 3, Township, Macomb County, Michigan, along the centerline of Hall Rd. (M-59) S. 01° 23' 33" E. 948.29 ft., thence S. 87° 46' 13" W. 887.72 ft. to the Point of Beginning, thence through 10 inclusive and 16.393 acres.

That I have made such survey, and laid out the same, and the owners of such land.

That such plat is a correct representation of the land surveyed and the subdivision of the same, and that the required monuments and lot lines have been deposited with the survey.

That the accuracy of the survey is in accordance with the Act.

That the bearings shown on the plat are true and as explained in the Act and as explained in the

