

LAND CORNER RECORDATION CERTIFICATE
Filing Requirement of Act 74, Mich. P.A. 1970

C150803

For corners in

MACOMB

Located In:
CLINTON TWP.

Corner Code #

LIBER 6523 PAGE 950

94 DEC -9 PH 2:50

REGISTER OF DEEDS
CLINTON TWP.

Register of Deeds Stamp & File Number

- | | | |
|---------------------------------------|--------------------------|-------------|
| 1. Public Land Survey | T <u>2N</u> R <u>13E</u> | <u>F-13</u> |
| | T _____ R _____ | _____ |
| | T _____ R _____ | _____ |
| | T _____ R _____ | _____ |
| 2. Property Controlling in Section | S _____ T _____ R _____ | _____ |
| | S _____ T _____ R _____ | _____ |
| 3. Miscellaneous Property in Sec. | S _____ T _____ R _____ | _____ |
| | S _____ T _____ R _____ | _____ |
| 4. Lot No. _____, Recorded Plat _____ | | |
| 5. Private Claims _____ | | |

	A	B	C	D	E	F	G	H	I	J	K	L	M
2	8	6	4	3	2	1							
3													
4	7	8	9	10	11	12							
5													
6	18	17	16	15	14	13							
7													
8	19	20	21	22	23	24							
9													
10	30	29	28	27	26	25							
11													
12	31	32	33	34	35	36							
13													

I, STEVEN E. DUNN, in a field survey on APRIL 4, 1994, do hereby certify that under requirements of P.A. 74, Michigan P.A. of 1970, the corner points mentioned in lines 1 and 2 above were in conformance with regulations and rules therefore as required in the current manual of survey instructions of the United States Department of the Interior, Bureau of Land Management or by a decree of a Court of Law and for that the corner points mentioned in lines 3, 4 and 5 above were in conformance with the rules of the Michigan Board of Land Surveyors or by a Decree of a Court of Law; established, re-established, monumented, re-monumented, recovered, found as expressed below:

NOTE: Not more than 4 corners, all in the same town and range, may be recorded on this certificate.

A. Description of original monument and accessories and/or subsequent restoration:

GLO POST - NO EVIDENCE OF ORIGINAL CORNER FOUND
GLO ORIGINAL SURVEY PERFORMED BY PRESTON 2-18-1818

L.C.R.C.	NAME AND NUMBER	DESCRIPTION	DATE
L 5483 P. 426	ROGER J. STECKER, #30103	FOUND 1/2" IRON ROD IN MONUMENT BOX	JUNE 22, 1992

PLATS	NAME AND NUMBER	DATE
L 3 P. 161	HARMON FARMS	JULY 26, 1919
L 7 P. 97	GRATIOT MASONIC PARK	JULY 19, 1924

ACCEPTED BY THE MACOMB COUNTY SURVEY PE GROUP AS THE OFFICIAL CORNER UNDER MICHIGAN PUBLIC ACT 345 OF 1990 AT A MEETING HELD ON 11-15-94

William E. Soderberg
WILLIAM E. SODERBERG, P.S., CHAIRMAN

B. Description of corner evidence found and/or method applied in restoring or reestablishing corner:

F-13 QUARTER CORNER COMMON TO F-1 ERINLAKE TOWNSHIP
FOUND 1/2" IRON ROD IN MONUMENT BOX IN ASPHALT PAVEMENT. VERIFIED LOCATION BY COMPARING FOUND WITNESSES OF ABOVE L.C.R.C.'S AND M-DOT DISTANCES TO THE SECTION.

FOUND WITNESSES
L 5483, P. 426
AZ 51° 51.91' SQUARE HEADED NAIL IN WEST FACE OF DETROIT EDISON POLE
AZ 330° 51.30' PK. NAIL AND M.C.R.C. CAP IN EAST FACE OF DETROIT EDISON POLE
AZ 231° 53.71' PK. NAIL AND M.C.R.C. CAP IN NORTHWEST FACE OF DETROIT EDISON POLE
AZ 138° 54.17' FACE OF 4" STEEL WALK SIGNAL POST

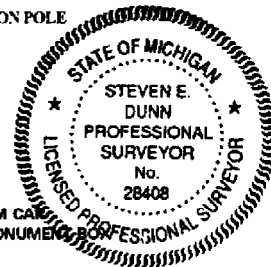
FIELD MEASUREMENTS AND RECORDED DISTANCES
F-13 TO G-13 2672.53' (M) 2672.80' "GRATIOT MASONIC PARK" (R) L 7, P. 97 2640.00' G.L.O. (R)
F-13 TO E-13 2699.14' (M) 2700.60' "HARMON FARMS" (R) L 3, P. 161 2640.00' G.L.O. (R)

C. Description of monument for corner and accessories established to perpetuate locating the position of the corner:

E-13 T.2N., R.13E I REPLACED 1/2" IRON ROD WITH 3/4" x 24" IRON ROD WITH 2" DIAMETER ALUMINUM CAP STAMPED "MACOMB COUNTY MONUMENT MI. ACT 345 #28408" IN AN EXISTING MONUMENT BOX IN ASPHALT PAVEMENT.

WITNESSES
AZ 51° 51.91' SQUARE HEADED NAIL IN WEST FACE OF DETROIT EDISON POLE
AZ 330° 51.30' SET PK NAIL AND M.C.R. WITNESS TAG IN EAST FACE OF DETROIT EDISON POLE
AZ 231° 53.71' PK NAIL AND M.C.R.C. CAP IN NORTHWEST FACE OF DETROIT EDISON POLE
AZ 138° 54.17' FACE OF 4" STEEL WALK SIGNAL POST

THE SELECTED LOCATION IS ACCEPTED BY ME AND IS GENERALLY ACCEPTED BY PROFESSIONAL SURVEYORS AS THE BEST AVAILABLE EVIDENCE OF THE POSITION OF THE ORIGINAL CORNER.

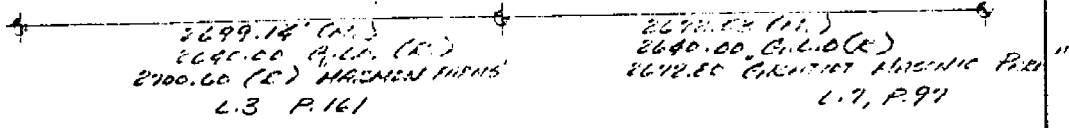


Signed by Steven E. Dunn Date Nov. 16, 1994
Surveyor's Michigan License No. 28408

22-141 50 SHEETS
22-142 100 SHEETS
22-144 200 SHEETS



F1



2699.14 (L.S.)
 2640.00 P.L.O. (L.S.)
 2700.00 (L.S.) HANSEN SURVY
 L.3 P.161

2678.04 (L.S.)
 2640.00 P.L.O. (L.S.)
 2672.00 GRANITE MONUMENT P.22
 L.7, P.97

LIBER 05483 PG 126

18731053

LAND CORNER RECORDATION CERTIFICATE
Filing Requirement of Act 74, Mich. P.A. 1970

RECORDED IN MACOMB COUNTY
RECORDS AT: 10:42A

JUN 22 1992

Edna Hill
CLERK - REGISTER OF DEEDS
MACOMB COUNTY, MICHIGAN

Register of Deeds Stamp & File Number

For corners in

MACOMB
(County)

Located In: Corner Code #/

- 1. Public Land Survey T 2N R 13E F-11
T R F-13
CLINTON TWP T R
T R
- 2. Property Controlling S T R
in Section 33 S T R
- 3. Miscellaneous S T R
Property in Sec. S T R
- 4. Lot No. Recorded Plat
- 5. Private Claims

I, ROGER J. STECKER, in a field survey on JUNE 19, 1992, do hereby certify that under requirements of P.A. 74, Michigan P.A. of 1970, the corner points mentioned in lines 1 and 2 above were in conformance with regulations and rules therefore as required in the current manual of survey instructions of the United States Department of the Interior, Bureau of Land Management or by a decree of a Court of Law and/or that the corner points mentioned in lines 3, 4 and 5 above were in conformance with the rules of the Michigan Board of Land Surveyors or by a Decree of a Court of Law, established, re-established, monumented, re-monumented, recovered, found as expressed below:

NOTE: Not more than 4 corners, all in the same town and range, may be recorded on this certificate.

	A	B	C	D	E	F	G	H	I	J	K	L	M
2	6	5	4	3	2	1							
3													
4	7	8	9	10	11	12							
5													
6	16	17	18	15	14	13							
7													
8	19	20	21	22	23	24							
9													
10	30	29	28	27	26	25							
11													
12	31	32	33	34	35	36							
13													

A. Description of original monument and accessories and/or subsequent restoration:

B. Description of corner evidence found and/or method applied in restoring or reestablishing corner:

- F-11 FOUND 5/8" SOLID ROD IN MONUMENT BOX
- F-13 FOUND 1/2" IRON IN MONUMENT BOX

C. Description of monument for corner and accessories established to perpetuate locating the position of the corner:

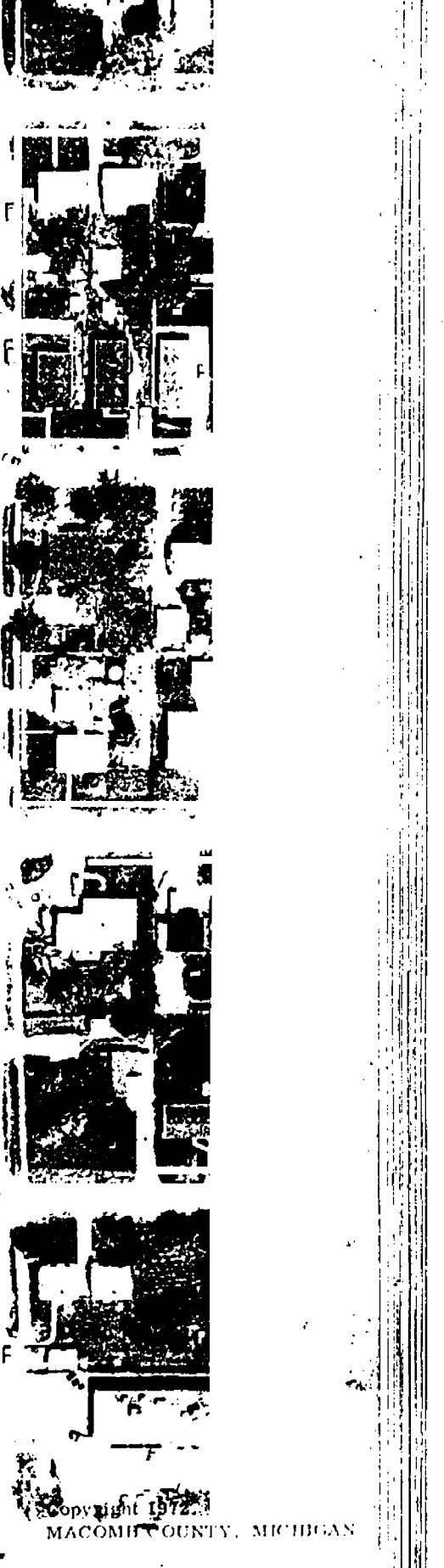
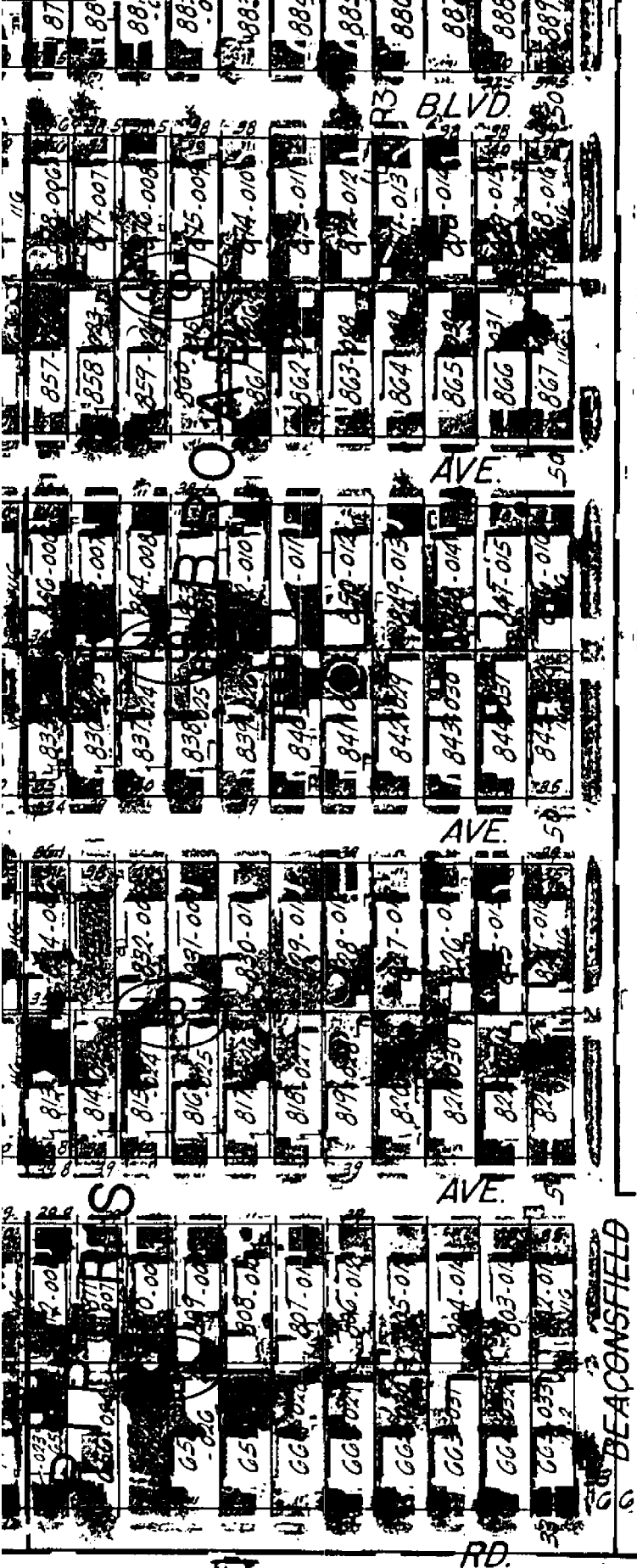
- F-11 N.E. 39.81 FT. FACE OF TRAFFIC LIGHT SUPPORT POLE
N.W. 57.04 FT. FACE OF 4" STEEL WALK SIGNAL POST
S.W. 57.06 FT. P.K. NAIL IN D.E. POLE
S.E. 61.47 FT. P.K. NAIL IN D.E. POLE
- F-13 N.E. 51.91 FT. SQUARE HEADED NAIL IN D.E. POLE
N.W. 51.30 FT. P.K. NAIL AND M.C.R.C. CAP IN D.E. POLE
S.W. 53.71 P.K. NAIL AND M.C.R.C. CAP IN D.E. POLE
S.E. 54.17 FACE OF 4" STEEL WALK SIGNAL POST

Signed by *Roger J. Stecker* Date 6/22/92
Surveyor's Michigan License No. 30103

01712

F13





Copyright 1972
MACOMB COUNTY, MICHIGAN

SCALE 1" = 100'

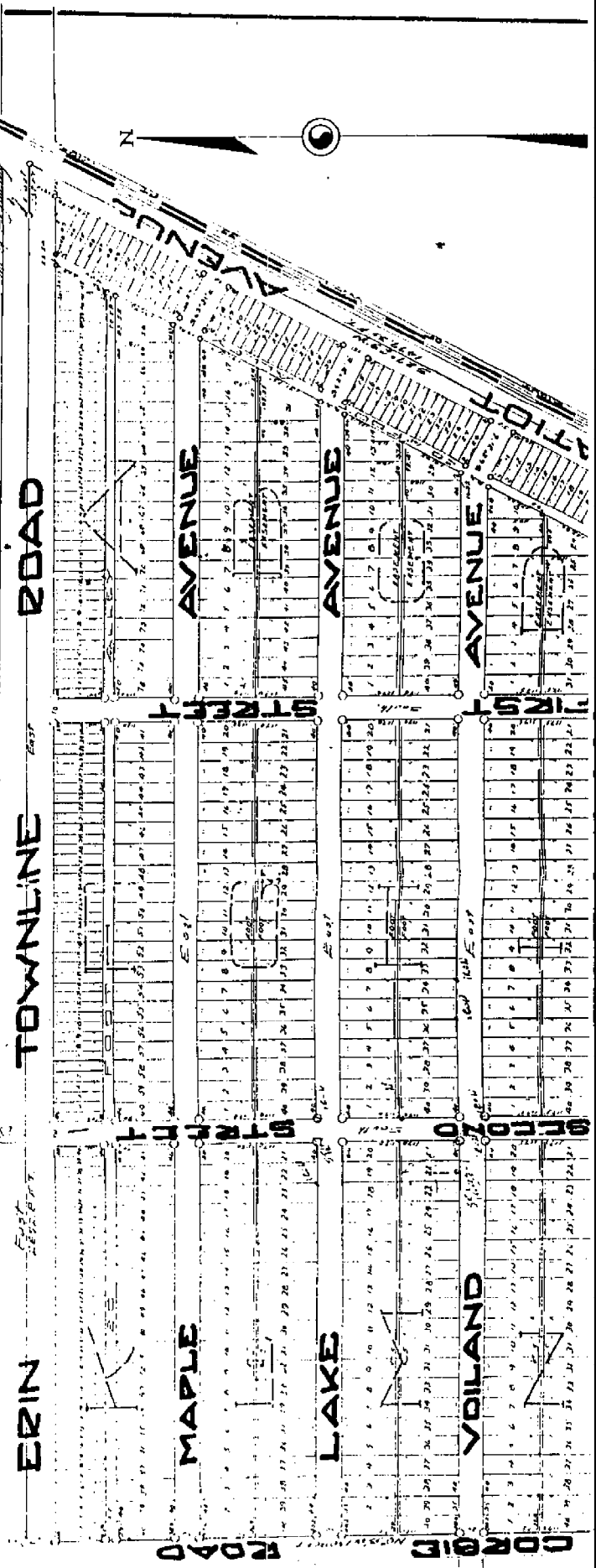
GRATIOT MASONIC PARK

A SUBDIVISION OF PART OF THE NW/4 OF SEC. 4 AND PART OF THE NW/4 OF SEC. 13 IN TWP. 36 N. R. 10 W. MICHIGAN

SCALE
1" = 200'

WALTER J. LEHNER REG. C.E.
M.T. CLEMENS MICHIGAN

July 16-1924
W. J. Lehner



47
200

T. 1 N. R. 13 E. Mer. Mich.

222 6	222 5	222 4	222 3	222 2	1
224	228	233	238	243	
222 7	222 8	222 9	222 10	222 11	12
225	225	228	232	235	
222 18	222 17	222 16	222 15	222 14	13
226	230	234	240	245	
222 19	222 20	222 21	222 22	222 23	24
227	231	235	241	247	
222 30	222 29	222 28	222 27	222 26	25
227	231	235	241	247	
222 31	222 32	222 33	222 34	222 35	36
227	231	235	241	247	

219 219 219

T. 2 N. R. 13 E. Mer. Mich.

246	246	247	247	247	247
245	245	245	245	245	245
250 6	250 5	250 4	250 3	250 2	250 1
250	254	256	257	257	
250 7	250 8	250 9	10	250 11	12
252	255	256	257	257	
250 18	250 17	250 16	15	14	13
253	254	254			
250 19	20	250 21	250 22	250 23	24
253	254	254	257	257	
250 30	250 29	250 28	250 27	250 26	250 25
253	253	253	257	257	257
250 31	250 32	250 33	250 34	250 35	250 36
253	253	253	257	257	257

Town 1 North Range 13 East

Line 12 S 13 W 6

Sec 12 S 13 W 6

No public lands East of this corner

North Boundary

East

6.58 B. Oak 24 in diam
 17.00 Marsh
 33.30 Left Marsh
 36.00 Marsh
 41.00 Made 74 Sec cor on a willow in diam
 40.50 Left marsh
 43.62 W.C. 24 in diam
 10.00 Made cor for sections 5, 6, 31, 32 on
 a Hemlock 3 in diam
 Land 1st half mile 1st rate last 1/2 mile
 2nd rate part dry 1st and 2nd B. Oak
 Elm White Birch Hemlock etc.

East

40.00 made 74 Sec cor on a Hickory 7 in diam
 66.00 W.C. 30 in diam
 10.00 made cor for sections 11, 12, 31, 32
 on a Sugar pine 40 inches diam
 Land 1st half mile 1st rate part dry
 W. Oak Lyons Polder Birch Sugar etc
 Red 1st 1/2 etc.

46.00 made 72 mile cor on an Elm 18 in diam
 49.00 Spruce 14 in diam
 10.00 Sit post for sections 24, 31, 34
 East from post which is B. Oak 6 in diam
 bears N 15 W 11 the dist also a B. Oak
 diam bears N 11 E 16 the dist - Spruce
 2nd rate level and dry similar W. Oak

Bears North Range 13 East

Sugar Poplar Lynns 10 1/2th Spruce

1413 Birch 16 in diam
 20.00 Km of the corner S.E
 1400 Made to mile cor on N. Birch 10 in diam
 10.00 Set post for cor of Sections 2, 3, 34 & 35
 from which a Birch 11 in diam bears
 N 53 E 17 lbs dist also an Elm 24 in
 diam bears N 5 W 31 lbs distant
 Land first 1/2 mile good 2nd rate
 last half 5th rate timber Birch Sugar
 N Oak Poplar B. Ash 10 1/2th Spruce

20.15 N Oak 17 in diam
 30.00 Intersected Birch claim N: 123 in the
 Set post for cor of Sections 2 & 35
 from which a Birch 10 in diam
 bears N 71 E 11 lbs dist also a
 Lynx 7 in diam bears N 52 E 7 lbs
 dist Land dry good 2nd rate timber
 Birch B. Ash Poplar etc

West Boundary

North of the first Meridian of the Territory
 Chalk of Michigan
 12.34 Poplar 36 inches diameter
 110.00 Set post for cor of 74 Section from
 which a Sugar tree 13 inches diam
 bears South of the distant
 118.62 Sycamore 36 in diam
 60.00 Set mile post for cor of sections
 25 & 36 from which an Ash 10 in
 diam bears S 77 E 10 lbs distant
 also a Lynx 10 in diam bears N 35
 W 20 lbs dist Land first half