

Part B: Surveyor's Report on Perpetuation, Restoration, Reestablishment or Monumentation of Corner: Center Post Section 33

Refer to: 12-18-2015 LCRC for Remonumentation Corner by Christopher A. Asiala, PS #49376 F12 recorded in L. 23779 of Deeds on P. 245 & 246. Set a 3/4" X 24" iron rod with a 2" aluminum cap stamped "MACOMB COUNTY MONUMENT MI ACT 345 CAA 49376 F-12" in a new monument box in the asphalt pavement with 4 accessories.

Part C: Field Evidence of Perpetuation or Monumentation of Corner: Center Post Section 33

4-10-2018 Found a 3/4" X 24" iron rod with a 2" aluminum cap stamped "MACOMB COUNTY MONUMENT MI ACT 345 CAA 49376 F-12" in a monument box in the asphalt pavement with 4 of 4 matching accessories from the LCRC listed in Part A
Occupied corner with GPS to obtain Geodetic Data.

Accessories:

N55°E 79.20' M Southwest corner of brick house #34012 Beaconsfield (79.05' R)
S75°E 70.11' R&M Southwest corner of brick house #34000 Beaconsfield
S05°W 156.07' R&M Found MAG nail with MCR washer in SE face of utility pole
N50°W 49.60' M Found MAG nail with MCR washer in NE face of utility pole (49.75' R)

Date of Observation	Latitude	Longitude	Datum and Adjustment Year	Epoch Date
4-10-2018	N 42D32'48.83894"	W 82D55'11.91742"	NAD83 (2011)	2010

Method for Latitude-Longitude determination: NGS OPUS-RS Solution

State Plane Coordinates in international feet: N-384867.70', E-13513165.00'
Standard Deviation: 0.03' N, 0.01' W
Zone: South
Combined Factor: 0.99990022
NGSPID: DI6134
Survey Method: MC GPS
Orthometric Height: 615.31'
Elev. Datum: NAVD88

I, Steven E. Dunn, P.S., in a field survey on April 10, 2018, certify under the requirements of the State Survey and Remonumentation Act, 1990 PA 345, MCL 54.261 to 54.279, and the Corner Recordation Act, 1970 PA 74, MCL 54.201 to 54.210d, that the corner identified and described hereon has been perpetuated or monumented as described in Parts A, B, and C above, pursuant to the laws and rules of the State of Michigan.

Steven E. Dunn

May 15, 2018

Steven E. Dunn, P.S.

Date

Professional Surveyor's License No.: 28408

Prepared By:
Steven E. Dunn, P.S.
Great Lakes Geomatics, LLC
76 S. Main Street
Mt. Clemens, Mi. 48043



I, Martin C. Dunn, P.S., Macomb County Surveyor Representative, have reviewed the corner perpetuated in parts A, B and C above for the purpose of publishing its Michigan State Plane Coordinate values and relative data and is accepted for filing in the Macomb County Remonumentation Program.

Martin C. Dunn

6-26-2018

Martin C. Dunn, P.S.

Date

Macomb County Surveyor Representative
License No. 30081

MACOMB COUNTY
INDEX OF SUPPORTING DOCUMENTS FOR

F-12
CENTER OF SECTION 33

CLINTON TOWNSHIP
T. 02 N., R. 13 E.

SECTION 1

<u>DATE</u>	<u>ITEM DESCRIPTION</u>
2015	INDEX
2015	PHOTOS OF CORNER

SECTION 2

<u>DATE</u>	<u>ITEM DESCRIPTION</u>
1 2015	LCRC
2 2015	SURVEYOR'S REPORT
3 2015	FIELD NOTES

SECTION 3

<u>DATE</u>	<u>ITEM DESCRIPTION</u>
1 1875	Atlas Clinton Twp
2 1895	Atlas Clinton Twp
3 1916	Atlas Clinton Twp
4 2015	PLAT BOOK MAP
5 2015	COMPOSITE MAPS WITH AERIAL IMAGE & TAX MAP

SECTION 4

<u>DATE</u>	<u>RECORD ITEM AND SOURCE</u>	<u>SURVEYOR & LICENSE</u>
1 1817	GLO Plats, County records	WM Preston
2 1924	Piper's Broad Acres No 4 L7, P37	BD ?
3 1939	SP of Mckishine Farm L19, P50	HJ Fuller
4 1966	Diane Sub L56, P25	G Koopman 4929
5 1966	Clinton Meadows Sub No2 L56, P41-42	RC Postiff 8894
6 1994	Elm Forest Sub L101, P43-44	WJ Coulter 14760







Land Corner Recordation Certificate
Attachment B to 2015 Annual Grant Agreement
 Authority: MCL 54.205 and R54.202

This form is **ONLY** for corners filed under the 2015 State Survey and Remonumentation Grant Agreement

Filing Requirement: MCL 54.268(2)(a), 54.268(2)(d), 54.201 – 54.210d and 2015 State Survey and Remonumentation Grant Agreement

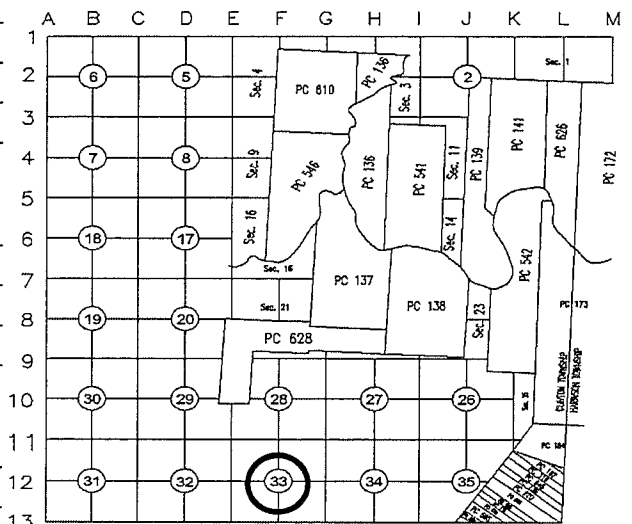
Notes:

- No more than two Original Public Land Survey Corners can be recorded on this certificate
- If a corner reported hereon is common to two or more survey townships, each Town, Range and Corner Code for the corner may be identified on this certificate
- If a corner reported hereon is common to two or more counties, each county may be identified on this certificate and a copy of this certificate filed with the Register of Deeds in each county

For corner(s) in: **Macomb County**

Clinton Township

Corner Type	Survey Township		Corner Code
Original Public Land Survey Corner	T _____	R _____	_____
• MCL 54.202(g)	T _____	R _____	_____
• MCL 54.262(g)	T _____	R _____	_____
Property Controlling Corner	S _____	T _____	R _____
• MCL 54.202(i)	S _____	T _____	R _____
• MCL 54.262(h)	S _____	T _____	R _____
	S _____	T _____	R _____
Protracted Public Land Survey Corner	T <u>02N</u>	R <u>13E</u>	<u>F-12</u>
• MCL 54.202(k)	T _____	R _____	_____
• MCL 54.262(i)	T _____	R _____	_____
	T _____	R _____	_____



Part A: Corner(s) History

The Center of Section 33 was not set during the original GLO survey.

	DATE	RECORD ITEM AND SOURCE	SURVEYOR & LICENSE	CORNER DESCRIPTION
1	1817	GLO Plats, County records	WM Preston	
2	1924	Piper's Broad Acres No 4 L7, P37	BD Coleman	F-12 is the plat's northeast corner
3	1939	SP of Mckishine Farm L19, P50	HJ Fuller 1645	Plat shows the north-south 1/4 line to south.
4	1966	Diane Sub L56, P25	G Koopman 4929	Plat shows the north-south 1/4 line.
5	1966	Clinton Meadows Sub No2 L56, P41-42	RC Postiff 8894	F-12 is the plat's southeast corner
6	1993	LCRC L5810, P083	WJ Coulter 14760	PK & Washer set in concrete pavement. 2 witnesses used to re-establish the corner. 3rd witnesses matches.
7	1994	Elm Forest Sub L101, P43-44	WJ Coulter 14760	L5810, P83

Part B: Surveyor's Report on Perpetuation or Monumentation of Corner(s)

Nothing was found at the Center of Section 33. The corner falls at the centerline of Beaconsfield Street (asphalt pavement, north-south). The corner is also at the centerline of Gaynon Drive which is to the west. There is no occupation to the immediate east. Several plats show the corner's position. The corner was previously re-established by Coulter in 1993 (LCRC L5810, P083) "using monuments recorded in "Clinton

Meadows Sub. No. 2", L.56, P.41&42, and record tie of 2681.80 feet to North 1/4". The corner as set and described by Coulter was not found, however 3 of Coulter's witnesses were recovered. I held 2 of his witnesses (both house corners) to re-establish the corner position and match to the third witness well. Several irons and pipes near the corner were also found and match the corner well.

Distances to Adjacent Corners:

<u>F-12 to F-11</u> 2681.86' Meas 2015 2681.80' Rec #5	<u>F-12 to G-12</u> (G-12 not Remonumented)	<u>F-12 to F-13</u> 2701.82' Meas 2015	<u>F-12 to E-12</u> 2690.16' Meas 2015
--	--	---	---

Part C: Field Evidence of Perpetuation or Monumentation of Corner(s)

I set a 3/4" x 24" iron rod with a 2" aluminum cap stamped "MACOMB COUNTY MONUMENT MI ACT 345 CAA 49376 F-12" in a new monument box in the asphalt pavement.

Witness ties are as follows:

- N55°E 79.05' Southwest corner of brick house #34012 Beaconsfield. 79.05' (Rec #6)
- S75°E 70.11' Southwest corner of brick house #34000 Beaconsfield. 70.11' (Rec #6)
- S05°W 156.07' Set MAG nail with MCR washer in SE face of Utility Pole.
- N50°W 49.75' Set MAG nail with MCR washer above Found PK nail in NE face of Utility Pole. 49.67' (rec #6)

Date of Observation	Latitude	Longitude	Datum and Adjustment Year	Epoch Date
11/11/2015	42° 32' 48.84" N	82° 55' 11.92" W	NAD83(2011)	2010.00

Method for coordinate determination: MDOT CORS Network Solution. RTK GPS

Disclaimer on accuracy of values reported relative to their use: +/- 1'

I, Christopher A. Asiala, in a field survey on 9-11-2015, certify under the requirements of the State Survey and Remonumentation Act, 1990 PA 345, MCL 54.261 to 54.279, and the Corner Recordation Act, 1970 PA 74, MCL 54.201 to 54.210d, that the corner(s) identified and described hereon has been perpetuated or monumented as described in Parts A, B, and C above, pursuant to the laws and rules of the State of Michigan.

Christopher A. Asiala

12-15-15

Christopher A. Asiala

Date

Professional Surveyor's License No.: 49376

Giffels Webster, 28 W. Adams, Suite 1200, Detroit MI, 48226



I, Martin C. Dunn, state that the corner(s) identified and described hereon and perpetuated or monumented as described in Parts A, B, and C above was presented to and reviewed by the Peer Review Group on 11/10/2015 and is accepted for filing in the Macomb County Remonumentation Program.

Martin C. Dunn

12-18-2015

Martin C. Dunn

Date

Professional Surveyor's License No.: 30081

F-12, Center of Section 33

Clinton Township T-02-N, R-13-E
2015 Macomb Remonumentation Report.

The township was subdivided in 1817 by WM Preston. The center of sections were not set during the original surveys.

Records:

	<u>DATE</u>	<u>RECORD ITEM AND SOURCE</u>	<u>SURVEYOR & LICENSE</u>	<u>CORNER DESCRIPTION</u>
1	1817	GLO Plats, County records	WM Preston	
2	1924	Piper's Broad Acres No 4 L7, P37	BD Coleman	F-12 is the plat's northeast corner
3	1939	SP of Mckishine Farm L19, P50	HJ Fuller	Plat shows the north-south 1/4 line to south.
4	1966	Diane Sub L56, P25	G Koopman 4929	Plat shows the north-south 1/4 line.
5	1966	Clinton Meadows Sub No2 L56, P41-42	RC Postiff 8894	F-12 is the plat's southeast corner
6	1993	LCRC L5810, P083	WJ Coulter 14760	PK & Washer set in concrete pavement. 2 witnesses used to re-establish the corner. 3rd witnesses matches.
7	1994	Elm Forest Sub L101, P43-44	WJ Coulter 14760	L5810, P83

Summary:

Nothing was found at the Center of Section 33. The corner falls at the centerline of Beaconsfield Street (asphalt pavement, north-south). The corner is also at the centerline of Gaynon Drive which is to the west. There is no occupation to the immediate east. Several plats show the corner's position.

The corner was previously re-established by Coulter in 1993 (LCRC L5810, P083) "using monuments recorded in "Clinton Meadows Sub. No. 2", L.56, P.41&42, and record tie of 2681.80 feet to North 1/4". The corner as set and described by Coulter was not found, however 3 of Coulter's witnesses were recovered. I held 2 of his witnesses (both house corners) to re-establish the corner position and match to the third witness well. Several irons and pipes near the corner were also found and match the corner well.

Measurement comparisons:

The corner is 2.81' west of the theoretical straight north-south 1/4 line. The east 1/4 corner has not been remonumented and has not been found or reestablished.

F-12 to F-11
2681.86' M 2015
2681.80' Rec #5

F-12 to G-12
(G-12 not Remonumented)

F-12 to F-13
2701.82' M 2015
2708.95' Rec #5

F-12 to E-12
2690.16' M 2015

REMONUMENTATION FIELD REPORT

DATE: 11-11-15 CREW: DA

WEATHER: _____

TOWNSHIP: Clinton

TOWN 2N

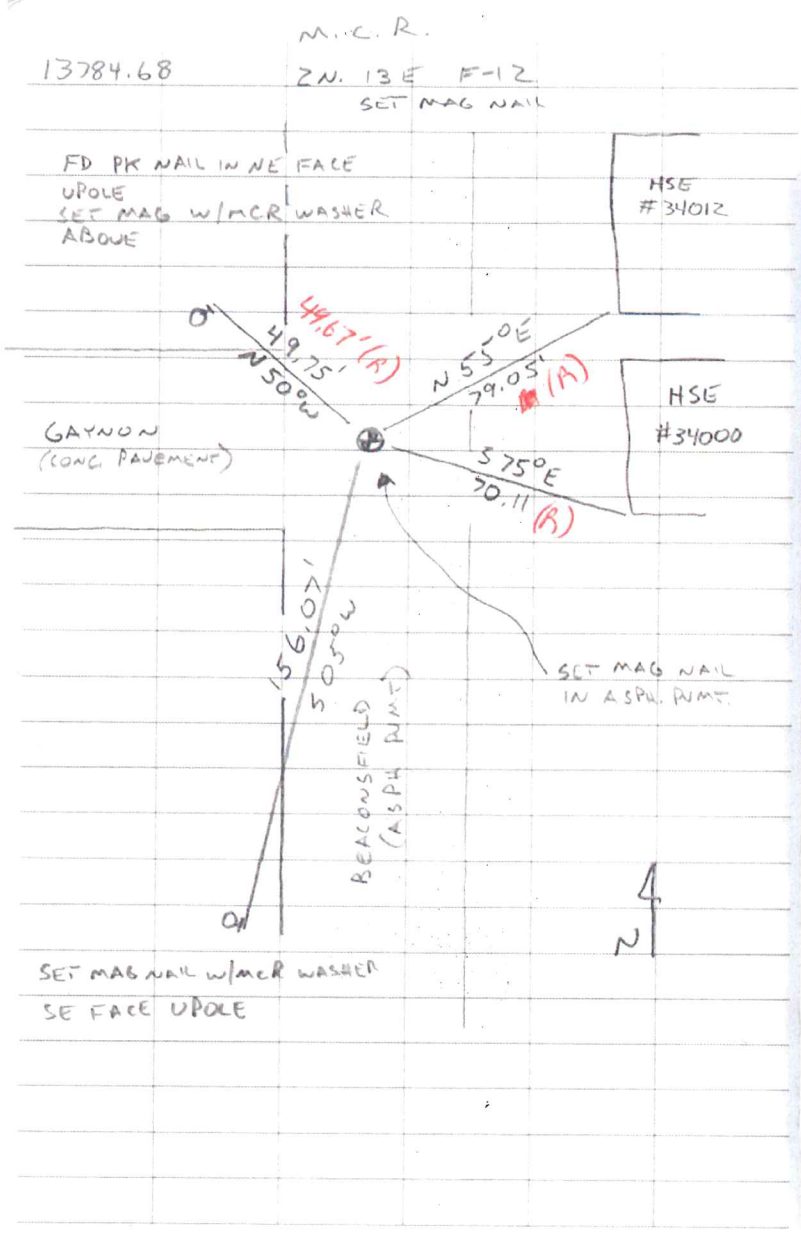
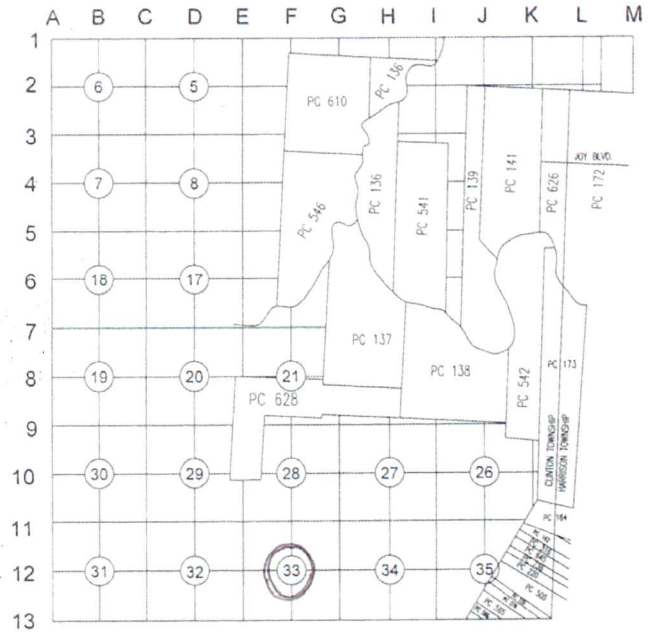
RANGE 13E

CORNER CODE: F-12

DEPTH: _____

LOCATION OF CORNER Beaconsfield
and Gaynon

WHAT WAS FOUND? Nothing

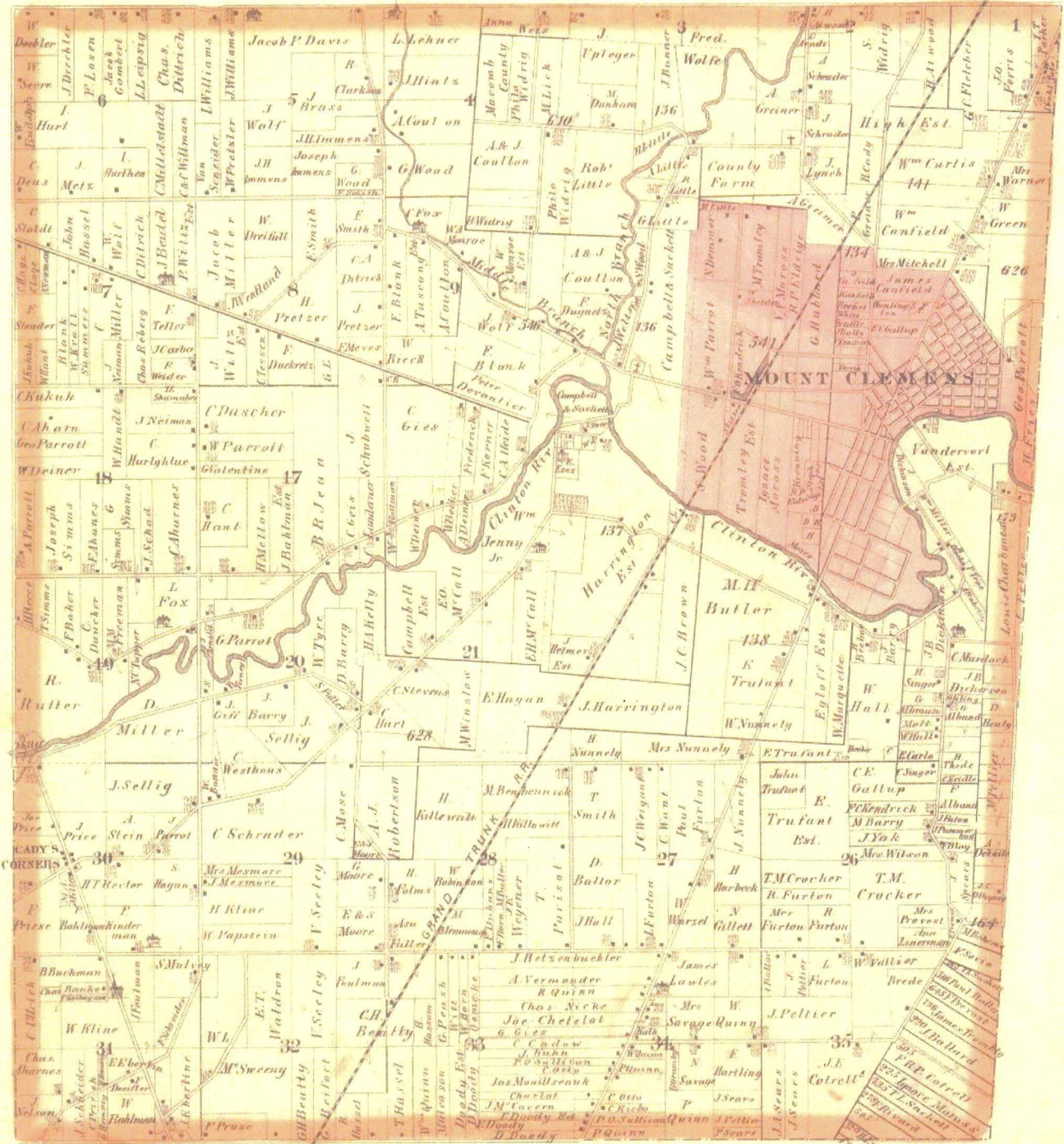


1875

21

MAP OF CLINTON TOWNSHIP

TP 2 N R 13 E



Drawn and Compiled by O.B. Cross

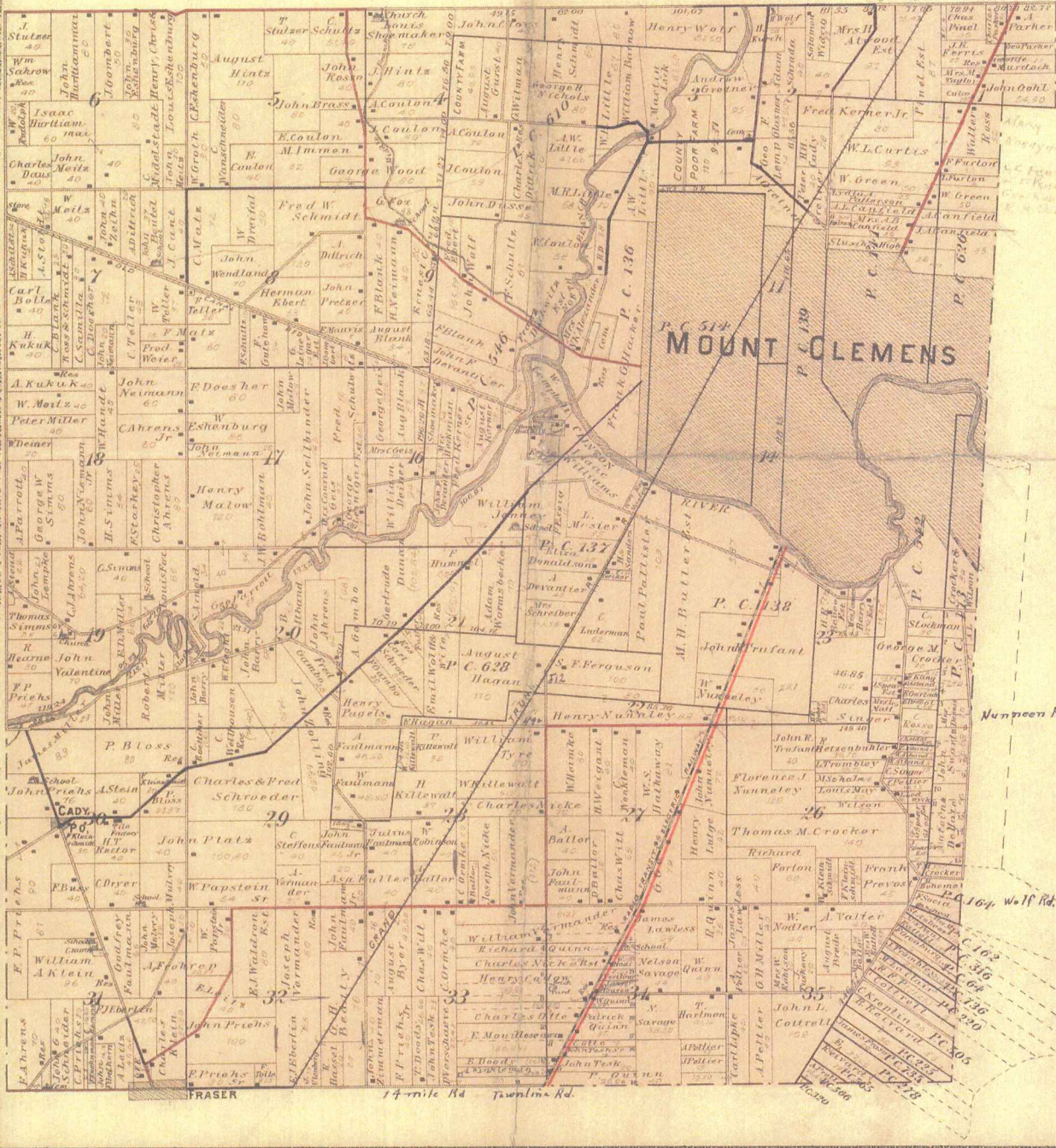
1895

MAP OF CLINTON

Township 2 North Range 13 East

Scale 2 Inches to one Mile.

of the Meridian of Michigan

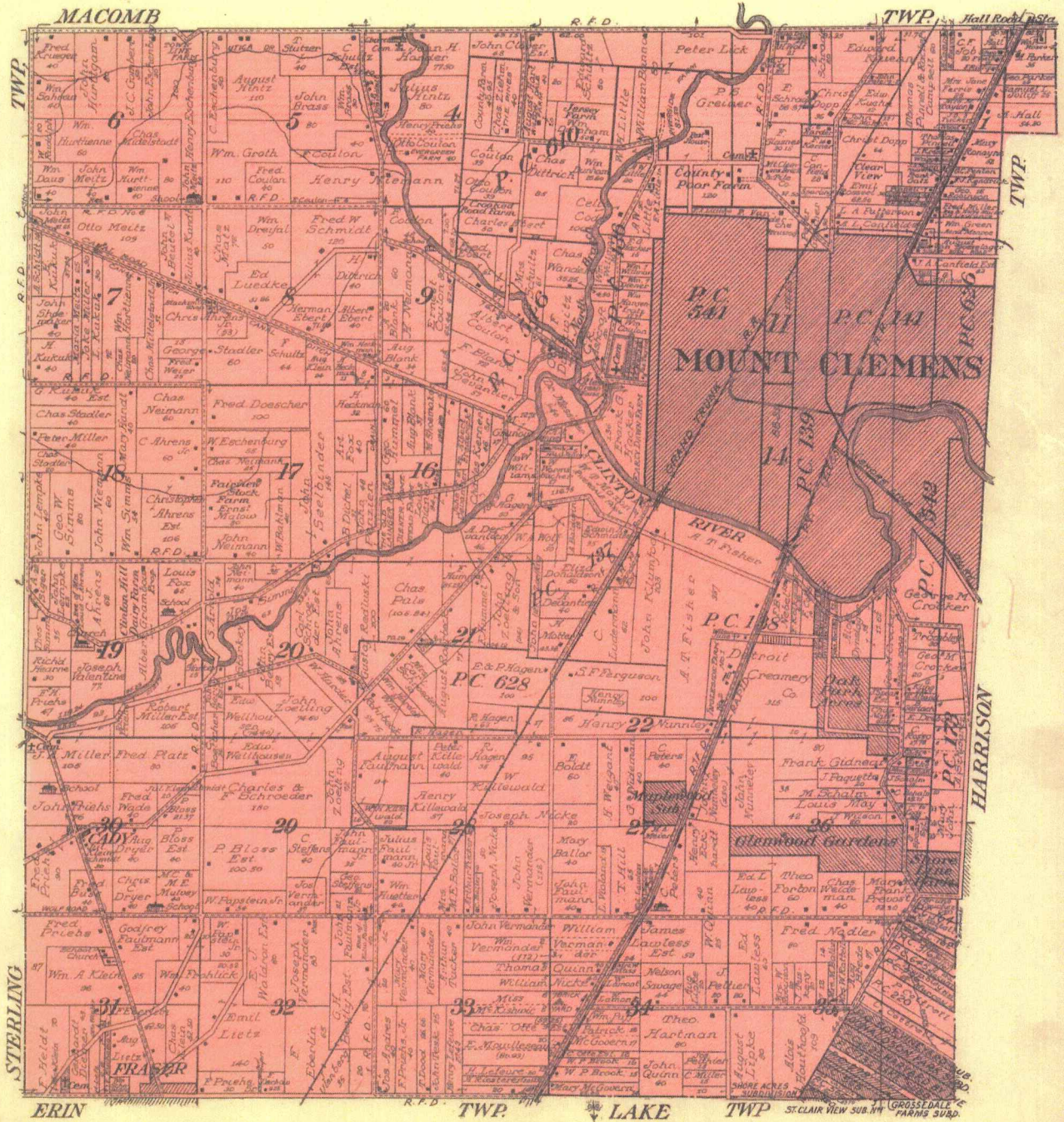


1916

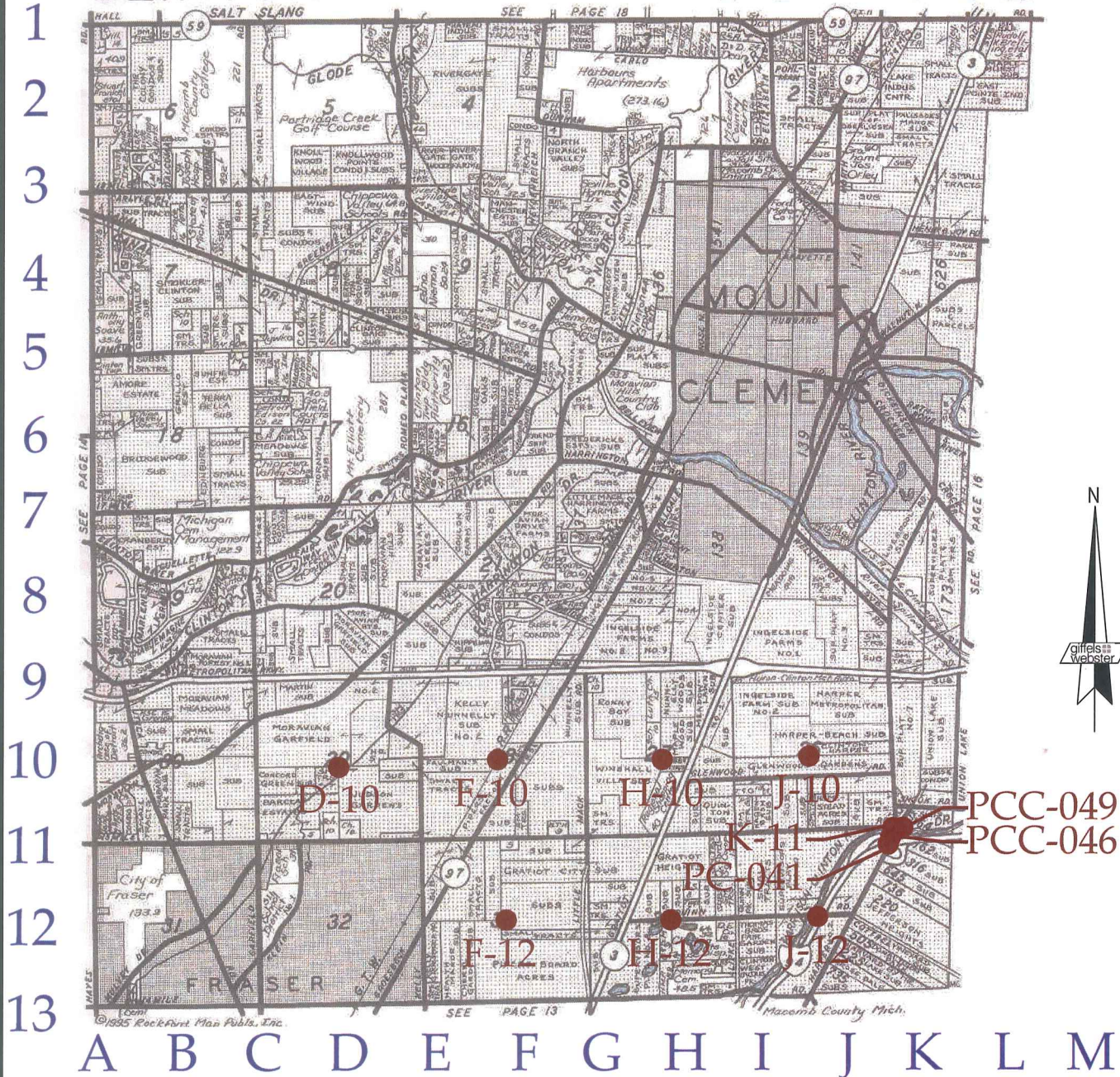
MAP OF
CLINTON
 TOWNSHIP

Scale 2 inches to 1 mile

Fractional Township 2 North, Range 13 East of the Michigan Meridian



CLINTON T. 2 N-R. 13 E



D10, F10, F12, H10, H12, J10, J12, K11,
Other Codes:

PC-041: Southwest Corner of Private Claim 164 common with the most western corner of Private Claim 162 and the Northwest Corner of Private Claim 316, on the easterly line of Fractional Section 35,

PCC-046: Intersection of the section line common to Fractional Sections 35 and 36 with the westerly line of Private Claim 164,

PCC-049: Intersection of the section line common to Fractional Sections 25 and 36 with the westerly line of Private Claim 164.

N:\13137001\3784.68 - Macomb 2015\Drawings\Macomb County Locations 2015.dwg

giffels webster
Engineers Surveyors Planners
Landscape Architects
Environmental Specialists

6303 26 Mile Road
Suite 100
Washington, MI 48094
p (586) 781-8950
f (586) 781-8951
www.giffelswebster.com

Executive:	J.N.R.
Manager:	C.A.A.
Designer:	J.Z.B.
Quality Control:	C.A.A.
D10, F10, F12, H10, H12, J10, J12, K11, PC-041, PCC-046, PCC-049	
T-02-N R-13-E	

**MACOMB COUNTY
REMONUMENTATION
PROGRAM 2015**

Date:	08/27/15
Scale:	N.T.S.
Sheet:	1 OF 1
Project:	13784.68

Copyright © 2013 Giffels Webster.
No reproduction shall be made
without the prior written consent
of Giffels Webster.

Reproduced with permission of Rockford Map Publishers, Inc.
Rockford, Illinois



Date of Photography: Spring 2012
 100 50 0 100 200 Feet

CLINTON TWP SHEET INDEX

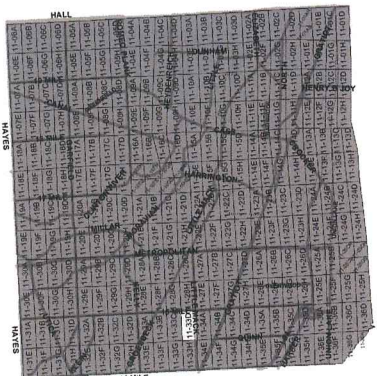
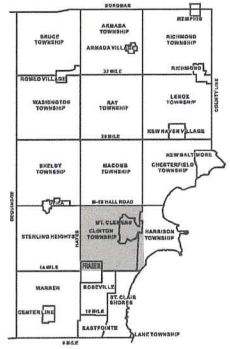
DESCRIPTION OF PERMANENT REAL ESTATE INDEX NUMBER
13-19-302-018

11-33D
 CLINTON TWP.
 E. 1/2 N.E. 1/4 SEC. 33 T.2N. R.13E.

- Legend**
- Platted Area Boundary Line
 - Property Line
 - Property Split Line
 - Property Combined Line
 - Township Boundary Line
 - Traverse Line
 - Dimension Extent Marks
 - Dimension Start Marks

Source: Macomb County Department of Planning and Economic Development
 - 2008 Digital Orthophotography Project
 - Parcel Conversion Project

Note:
 Digital Orthophotography horizontal positioning accuracy is 3 feet. Parcel boundary lines should be considered a graphical representation and not in any way a legal survey or engineering document. In general, the horizontal positioning and length accuracy is within 15 feet.
 This map is intended for general planning purposes. Site specific evaluation should be verified by field inspection. This is a work in progress and may contain errors and omissions. Please report any potential revisions to (586)469-5265.



GIS MACOMB COUNTY
 Planning and Economic
 Development Department
 Published: Jun 06 2013



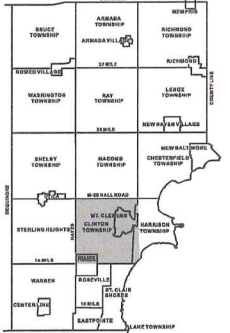
Date of Photography: Spring 2012
 100 50 0 100 200 Feet
 11,200

CLINTON TWP SHEET INDEX

DESCRIPTION OF PERMANENT REAL ESTATE INDEX NUMBER
13-19-302-018

AREA NUMBER	SUB AREA NUMBER	BLOCK NUMBER	PARCEL NUMBER
13-19-302-018	018	302	018

11-33E
 CLINTON TWP.
 W. 1/2 S.W. 1/4 SEC. 33 T.2N. R.13E.



- Legend**
- Platted Area Boundary Line
 - Property Line
 - Property Split Line
 - Property Combined Line
 - Township Boundary Line
 - Traverse Line
 - Dimension Extent Marks
 - Dimension Start Marks

Source: Macomb County Department of Planning and Economic Development
 - 2008 Digital Orthophotography Project
 - Parcel Conversion Project

Note: Digital Orthophotography horizontal positioning accuracy is 3 feet. Parcel boundary lines should be considered a graphical representation and not in any way a legal survey or engineering document. In general, the horizontal positioning and length accuracy is within 10 feet. This map is intended for general planning purposes. Site specific evaluation should be verified by field inspection. This is a work in progress and may contain errors and omissions. Please report any potential revisions to (586)469-5265.

COPYRIGHT 2009
 MACOMB COUNTY, MI
 All Rights Reserved



GIS MACOMB COUNTY
 Planning and Economic
 Development Department

Published: May 16 2014



Date of Photography: Spring 2012
 100 50 0 100 200 Feet

CLINTON TWP SHEET INDEX

DESCRIPTION OF PERMANENT REAL ESTATE INDEX NUMBER

13-19-302-018
 AREA NUMBER: 13-19-302-018
 PARCEL NUMBER: 13-19-302-018
 BLOCK NUMBER: 13-19-302-018
 PARCEL NUMBER: 13-19-302-018

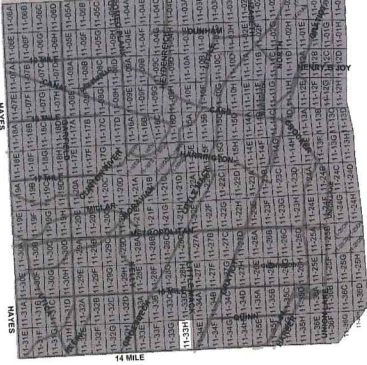
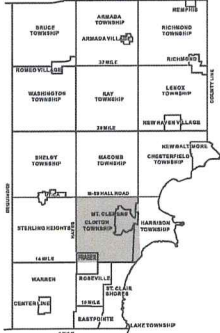
11-33H

CLINTON TWP.
 E. 1/2 S.E. 1/4 SEC. 33 T. 2N. R. 13E.

Source: Macomb County Department of Planning and Economic Development
 - 2008 Digital Orthophotography Project - Parcel Conversion Project

Note: Digital Orthophotography horizontal positioning accuracy is 3 feet. Parcel boundary lines should be considered a graphical representation and not in any way a legal survey or engineering document. In general, the horizontal positioning and length accuracy is within 1/2 foot.
 This map is intended for general planning purposes. Site specific evaluation should be verified by field inspection. This is a work in progress and may contain errors and omissions. Please report any potential revisions to (586)463-5295.

- Legend**
- Platted Area Boundary Line
 - Property Line
 - Property Split Line
 - Property Combined Line
 - Township Boundary Line
 - Traverse Line
 - Dimension Extent Marks
 - Dimension Start Marks



GIS MACOMB COUNTY
 Planning and Economic Development Department

Published: Jun 06 2013



Date of Photography: Spring 2012
 100 50 0 100 200 Feet

CLINTON TWP SHEET INDEX

DESCRIPTION OF PERMANENT REAL ESTATE INDEX NUMBER
13-19-302-018

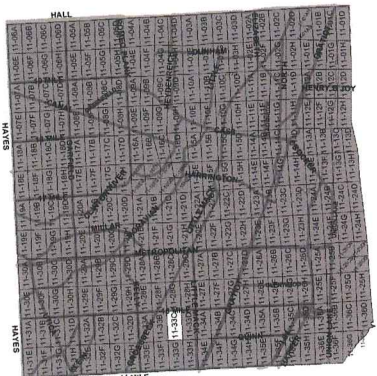
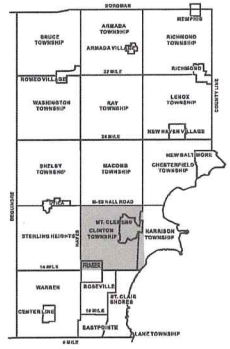
11-33C
 CLINTON TWP.
 W.1/2 N.E.1/4 SEC.33 T.2N. R.13E.

- Legend**
- Platted Area Boundary Line
 - Property Line
 - Property Split Line
 - Property Combined Line
 - Township Boundary Line
 - Traverse Line
 - Dimension Extent Marks
 - Dimension Start Marks

Source: Macomb County Department of Planning and Economic Development
 - 2008 Digital Orthophotography Project
 - Parcel Conversion Project

Note:
 Digital Orthophotography horizontal positioning accuracy is 3 feet. Parcel boundary lines should be considered a graphical representation and not in any way a legal survey or engineering document. In general, the horizontal positioning and length accuracy is within 15 feet.

This map is intended for general planning purposes. Site specific evaluation should be verified by field inspection. This is a work in progress and may contain errors and omissions. Please report any potential revisions to (586) 469-5265.



GIS MACOMB COUNTY
 Planning and Economic
 Development Department
 Published: May 15 2014

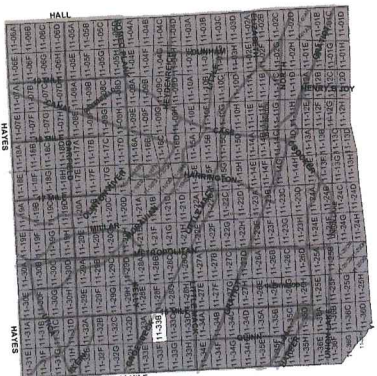
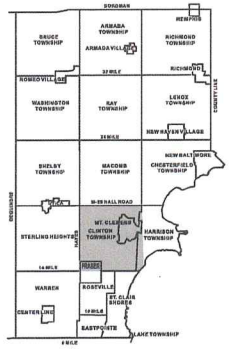


Date of Photography: Spring 2012
 100 50 0 100 200 Feet
 11,200

CLINTON TWP SHEET INDEX

DESCRIPTION OF PERMANENT REAL ESTATE INDEX NUMBER
13-19-302-018

F-12
11-33B
 CLINTON TWP.
 E. 1/2 N.W. 1/4 SEC. 33 T.2N. R.13E.



- Legend**
- Platted Area Boundary Line
 - Property Line
 - Property Split Line
 - Property Combined Line
 - Township Boundary Line
 - Traverse Line
 - Dimension Extent Marks
 - Dimension Start Marks

Source: Macomb County Department of Planning and Economic Development
 - 2008 Digital Orthophotography Project
 - Parcel Conversion Project

Note:
 Digital Orthophotography horizontal positioning accuracy is 3 feet. Parcel boundary lines should be considered a graphical representation and not in any way a legal survey or engineering document. In general, the horizontal positioning and length accuracy is within 15 feet.

This map is intended for general planning purposes. Site specific evaluation should be verified by field inspection. This is a work in progress and may contain errors and omissions. Please report any potential revisions to (586)469-5285.

COPYRIGHT 2009
 MACOMB COUNTY, MI
 All Rights Reserved



GIS MACOMB COUNTY
 Planning and Economic
 Development Department

Published: May 16 2014



Date of Photography: Spring 2012
 100 50 0 100 200 Feet

CLINTON TWP SHEET INDEX

DESCRIPTION OF PERMANENT REAL ESTATE INDEX NUMBER

13-19-302-018

11-33F

CLINTON TWP.

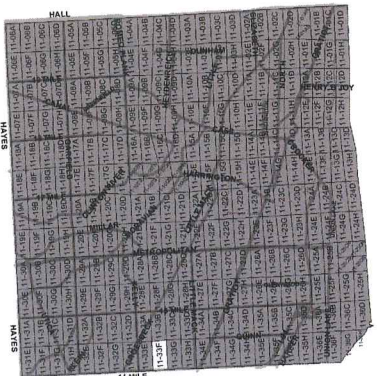
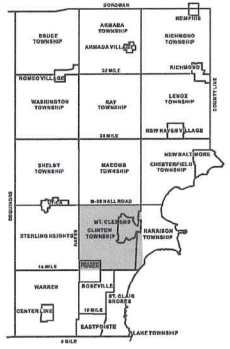
E. 1/2 S.W.1/4 SEC.33 T.2N. R.13E.

- Legend**
- Platted Area Boundary Line
 - Property Line
 - Property Split Line
 - Property Combined Line
 - Township Boundary Line
 - Traverse Line
 - Dimension Extent Marks
 - Dimension Start Marks

Source: Macomb County Department of Planning and Economic Development
 - 2008 Digital Orthophotography Project
 - Parcel Conversion Project

Note: Digital Orthophotography horizontal positioning accuracy is 3 feet. Parcel boundary lines should be considered a graphical representation and not in any way a legal survey of engineering document. In general, the horizontal positioning and length accuracy is within 15 feet.

This map is intended for general planning purposes. Site specific evaluation should be verified by field inspection. This is a work in progress and may contain errors and omissions. Please report any potential revisions to (586)468-5265.



GIS MACOMB COUNTY
 Planning and Economic
 Development Department

Published: May 16 2014

Copyright 2009
 MACOMB COUNTY, MI
 All Rights Reserved

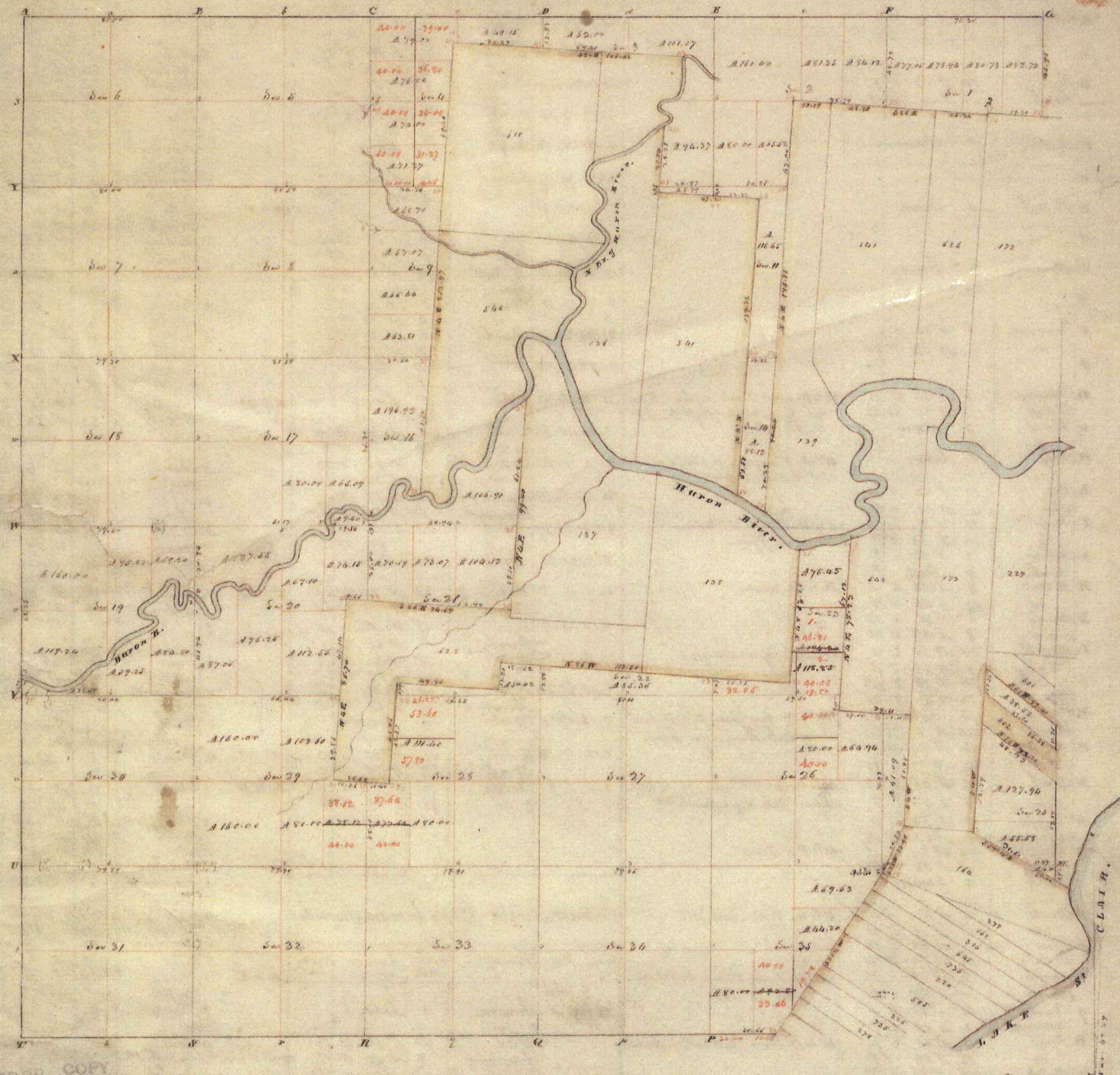
Township N. H. North, Range N. XIII East of Mer. (Mich. Ter.)



A true copy from the Original on file in the Office Acad. Dec
 Quantity exclusive of private claim — 1A. 202, 99
 Surveyor General's Office }
 Feb 20th 1819 }

Edward Tiffin
 Surveyor General

POOR COPY



Township N: II North, Range N: XIII East of Mer. (Mich. Ter.)

surveyed by Wm. Preston.

1817

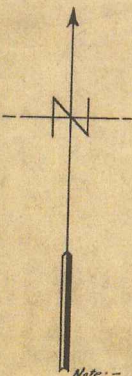
Description of the soil on the interior sectional lines

Section	Quality &c	Section	Quality &c
5. 5	Wk dry sandy, shaly, N Oak, B. Oak, Spruce, & Pine to	29. 20	Level & clay S. rate - W Oak, Birch, Sugar
6. 7	Level & wet S. rate - W Oak, Birch, Elm, Spruce	19. 30	Same
7. 8	Same (fast dry)	19. 20	S of the River Same
7. 18	Same	32. 33	1st & 2nd S. rate - W Oak, Spruce, Ash, Elm
17. 18	Moderately S. rate - W Oak, Birch, Sugar, Spruce, Elm, Ash, Spruce	29. 30	Level, fast dry W Oak, Birch, B. Oak, Spruce & Pine
18. 19	Same	28. 29	S. rate W Oak
19. 20	Level & S. rate - W Oak, Birch, Sugar, Spruce	20. 21	Same
2. 5	Dry S. rate - Birch, Sugar, Spruce	18. 21	Same
3. 8	Same	20. 29	Same
3. 9	Same - (W Oak)	23. 30	Same with Birch, Sugar, Spruce, good land
8. 19	Level & wet S. rate - W Oak, Elm, Spruce	28. 33	Same
11. 17	Wk wet S. rate - W Oak, Birch, Sugar, Spruce, Elm, Ash, Spruce	27. 18	Same
12. 20	Level good S. rate - W Oak, Birch, Sugar, Spruce, Pine	21. 21	Same
3. 6	Dry S. rate - Birch, W Oak, Ash, Sugar	30. 33	Same
4. 9	Same	33. 34	Same
2. 3	Same	25. 27	Same
3. 10	Level & swampy S. rate - Spruce, Birch, Elm	22. 23	Same
10. 11	Same	21. 23	Same
2. 11	Level dry S. rate - W Oak, Birch, Sugar	23. 26	Same
		24. 25	Same

July 6 1924
J. L. Marshall

"PIPER'S BROAD ACRES NO. 4"

A SUBDIVISION OF A PART OF THE
S. 1/2 OF SEC. 33 AND A PART OF THE S.W. 1/4 OF THE S.W. 1/4 OF
SEC. 34 T.2.N., R.13.E., CLINTON TWP., MACOMB COUNTY,
MICHIGAN.



Note:--
All dimensions in feet and decimals thereof.
Scale 1" = 200'-0"

See Restrictions for Change of Plat Name
See Restrictions After 577 deeds
Page 573.

East W. 1/4 line of Sec. 33
S. 87° 34' W. 462.2 ft.

F-12
Center Post of
Sec. 33

Colman and Harding Inc.,
Consulting and Construction Eng'rs.,
306 Barkum Bldg.,
Detroit, Mich. *Blaine T. Colman*
7/24/24

DESCRIPTION.

The land embraced in the annexed plat of "PIPER'S BROAD ACRES NO. 4" a subdivision of a part of the S. 1/2 of Sec. 33 T.2.N., R.13.E., and a part of the S.W. 1/4 of the S.W. 1/4 of Sec. 34 T.2.N., R.13.E., Clinton Twp., Macomb Co., Mich. is described as follows: beginning at the S. 1/4 Post of Sec. 33 T.2.N., R.13.E., thence S 63° 31' E. 2763.5 ft. along the common line of Secs. 33 and 34 T.2.N., R.13.E., and Secs. 4 and 5 T.1.N., R.13.E.; thence N. 27° 55' E. 3131 ft.; thence N. 85° 28' W. 2314.0 ft. to the N. and S. 1/4 line of Sec. 33; thence N. 0° 13' W. 1536.0 ft. along said N. and S. 1/4 line to the E. and W. 1/4 line of Sec. 33; thence S. 87° 36' W. 463.2 ft. along said E. and W. 1/4 line; thence S. 0° 14' E. 2681.6 ft. to the common line of Sec. 33 T.2.N., R.13.E., and Sec. 4 T.1.N., R.13.E.; thence S. 83° 10' E. 462.5 ft. along said common line to the point of beginning; containing 411.51 acres.

I hereby certify that the plat herein plat is a correct one and that permanent monuments, consisting of iron pins one inch in diameter and sixteen inches long have been placed in the ground at all points marked thereon, and as shown shown at all corners in the boundaries of the land platted, and at all intersections of streets or streets and alleys.

Blaine T. Colman
Surveyor Reg. Civil Eng.

This plat was approved by the Board of Supervisors of Clinton Township, Macomb County, Mich. at a meeting held on the 21st day of July, 1924.

Walter F. Duckwitz
Treasurer

KNOW ALL MEN BY THESE PRESENTS, that the Grantor, Macomb Development Co., Clerk, E. Frank, and Hope M. Messer, Secretary, have caused the land embraced in the annexed plat to be surveyed and platted, and the same to be known as "Piper's Broad Acres No. 4" a subdivision of a part of the S. 1/2 of Sec. 33 and a part of the S.W. 1/4 of the S.W. 1/4 of Sec. 34 T.2.N., R.13.E., Clinton Twp., Macomb Co., Mich. and that the streets and alleys as shown on said plat are hereby dedicated to the use of the public.

Witness our hands and seals this 22nd day of January, A. D. 1924.

Gratrot, Macomb Development Co.
John L. Metzger Clerk
Hope M. Messer Secretary



STATE OF MICHIGAN
County of Macomb
On this 22nd day of January, 1924, before me a Notary Public in and for said county, appeared *Claude R. Troncy* and *Hope M. Messer*, Vice-Pres. of the Secretary respectively of Gratrot, Macomb Development Co., and they caused to said instrument to be subscribed and signed by them and by *Claude R. Troncy* and *Hope M. Messer*, Secretary respectively of said corporation, and they caused the same to be sealed and attested by me in accordance with the laws of said State.



STATE OF MICHIGAN
County of Macomb
On this 22nd day of January, 1924, before me a Notary Public in and for said county, personally appeared the above named *Henry Letcours*, and he caused the above describing and returned to me a true and correct copy of the same to be subscribed and signed by him and by *Blaine T. Colman*, Surveyor, and they caused the same to be sealed and attested by me in accordance with the laws of said State.



RECORDED FOR RECORD this 14th day of February, A. D. 1924, in 2125 of P. M. and recorded in Liber 7 of Plates on page 27
Hugh C. Whiting



Table with columns for street names and lot numbers. Streets include GAYNON AVE, TROMLEY AVE, HICKMAN AVE, COLMAN AVE, WEBSTER AVE, BROAD ACRES BLVD, STAFFORD AVE, WILLIAMS AVE, CLINTON AVE. Lot numbers range from 1 to 100.

Table with columns for street names and lot numbers. Streets include CLINTON AVE, BARBORS AVE, SWIFT AVE, MOORE AVE. Lot numbers range from 1 to 100.

3.65° 10' E. 462.5 ft. Point of Beginning.

Common line of Secs. 33 and 34 T.2.N., R.13.E., and Secs. 4 and 5 T.1.N., R.13.E.

S. 83° 31' E. 2763.5 ft.

COUNTY TREASURER CERTIFICATE:

This is to certify that the above plat was approved by the Board of Supervisors of Clinton Township, Macomb County, Michigan, at a meeting held on the 21st day of July, 1924.

This plat was approved by the County Board for Macomb County, Michigan, on the 25th day of July, 1924.

L-8

"ORIGINAL"

"SUPERVISORS PLAT OF MCKISHINE FARM"

OF PART OF SECTIONS 33 & 34 T. 2. N. R. 13. E.
CLINTON TWP MACOMB CO. MICH.

15102

Scale: 1 inch = 200 Feet



NOTE: All dimensions hereon are in feet and decimals thereof.

DEDICATION

KNOW ALL MEN BY THESE PRESENTS, That I Otto Sherbeck, Supervisor of the Township of Clinton, Macomb County, STATE OF MICHIGAN, by virtue of authority in me vested by Section 51, Act 172, of 1929, having been duly authorized by the Township Board, have caused the land described in the annexed plat to be surveyed, laid out and platted, to be known as "SUPERVISORS PLAT OF MCKISHINE FARM" of part of Sections 33 and 34, T. 2. N. R. 13. E. CLINTON TWP MACOMB CO. MICH and that the streets and alleys as shown on said plat are now being used for such purposes.

WITNESSES:

Richard King
Richard King
J. Howard Ellis
J. Howard Ellis

Otto Sherbeck
Otto Sherbeck
Supervisor of the Township of Clinton

ACKNOWLEDGEMENT

STATE OF MICHIGAN)
 ss

COUNTY OF MACOMB)

On this 17th day of July A.D. 1939, before me, a Notary Public in and for said county, personally came the above named Supervisor of the Township of Clinton, Macomb County, Michigan, known to me to be the person who executed the above dedication, and acknowledged the same to be his free act and deed as such Supervisor.

Varis A. Boelter
Notary Public in and for Macomb County Varis A. Boelter

My commission expires April 29, 1943

SURVEYORS CERTIFICATE

I hereby certify that the plat hereon delineated is a correct one and that permanent metal monuments of not less than one inch in diameter and fifteen inches in length set in a concrete base at least four inches in diameter and forty-eight inches in depth have been placed at points marked thus: "o", as thereon shown at all angles in the boundaries of the land platted, at all the intersections of streets, intersections of alleys, or of streets and alleys, and at the intersections of streets and alleys with the boundaries of the plat as shown on said plat.

Harry J. Fuller
Harry J. Fuller Registered Land Surveyor

CERTIFICATE OF MUNICIPAL APPROVAL

This plat was approved by the Township Board of the Township of Clinton at a meeting held July 12 A.D. 1939.

Township Clerk Paul Stepnitz
Paul Stepnitz

CERTIFICATE OF APPROVAL BY COUNTY BOARD

This plat was approved on the 12th day of July 1939

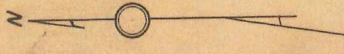
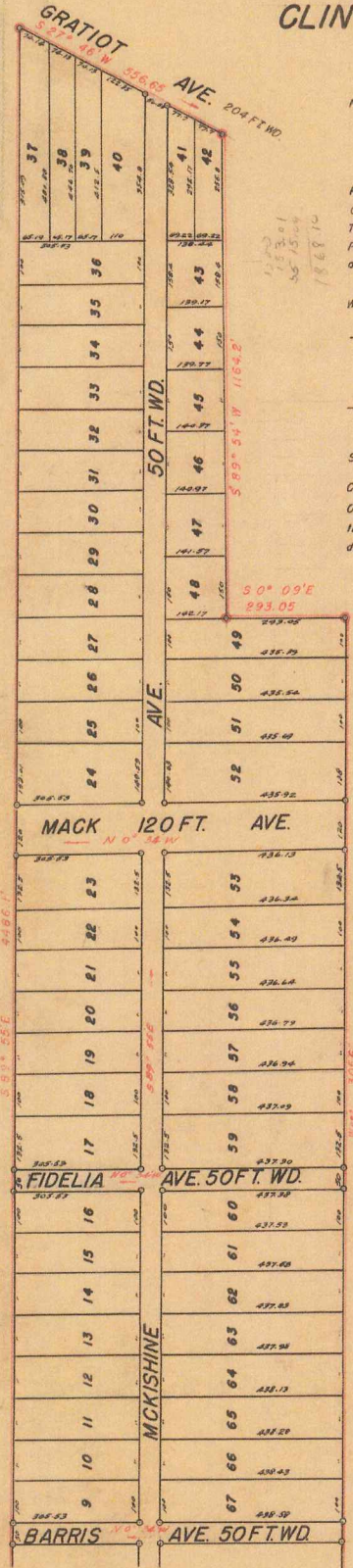
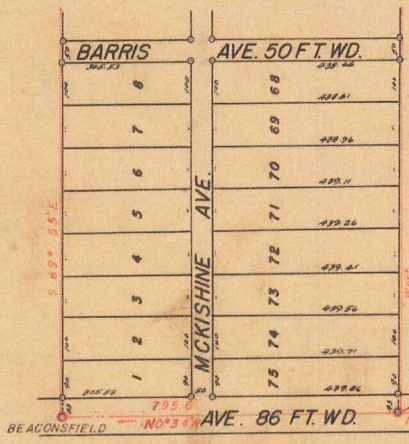
Judge of Probate Roy H. Callens
Roy H. Callens
County Clerk Guy L. Brown
Guy L. Brown
County Treasurer Carl B. Brandenburg
Carl B. Brandenburg

DESCRIPTION

The land embraced in the annexed plat of SUPERVISORS PLAT OF MCKISHINE FARM of part of Sections 33 & 34 T. 2. N. R. 13. E. Clinton Twp. Macomb Co. MICH. is described as follows: Commencing at the S 11.4 post of Sec. 33 T. 2. N. R. 13. E., thence N 0° 34' W 2488 ft. to the point of beginning, thence N 0° 34' W 795.6 ft. thence S 89° 55' E 4486.1 ft. thence S 27° 46' W 556.65 ft., thence S 89° 54' W 1164.2 ft., thence S 0° 09' E 293.05 ft., thence West 3056 ft. to the point of beginning.

CERTIFICATE AS TO STATE TRUNK LINE OR FEDERAL AID ROADS
We hereby certify that said plat appears to include land located on a state trunk line or federal aid road.

Roy H. Callens Roy H. Callens
Guy L. Brown Guy L. Brown
Carl B. Brandenburg Carl B. Brandenburg
County Plat Board



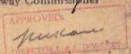
REGISTER'S OFFICE
County of Macomb

Received for Record this 21 day
of OCT 31 1939 A.D. 19, at
10:10 o'clock M. and Recorded
in Liber 17 at 11:45
on Page 320
Wanda Mayette Register

Examined and Approved

October 30, 1939
Mayne Jewel Purdy
Mayne Jewel Purdy Deputy Auditor General

WIDTH AND LOCATION OF
STATE TRUNK LINE AND
FEDERAL AID ROADS O. K.
Harvey D. Van Wagenen
State Highway Commissioner



See Instructions, Subv. 293, Revised, page 324
The 28th of July 1939

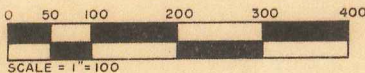
DIANE SUBDIVISION OF PART OF SEC. 33, T.2N., R.13E.

A REPLAT OF LOTS 1-2-75 AND PART OF LOT 74 OF SUPERVISORS PLAT OF MCKISHINE FARM PART OF SEC. 33 & 34, T.2N., R.13E., CLINTON TWP., MACOMB CO., MICHIGAN.

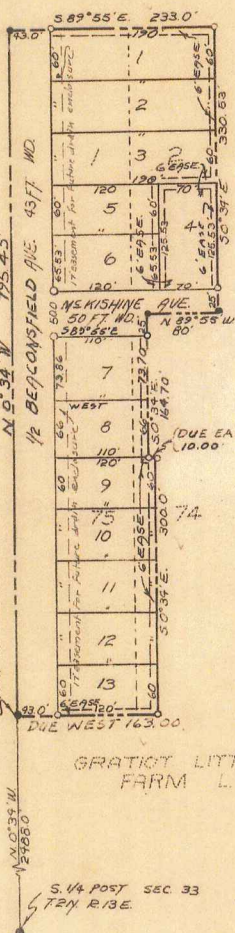
All dimensions are in feet and decimals thereof. All easements shown on plat are private easements for public utilities and drainage.

789217

MAVIS, KOOPMAN & LANDWEHR, INC. 29400 VAN DYKE AVE. WARREN, MICHIGAN.



IMPERIAL SUB



SUPERVISORS PLAT OF MCKISHINE FARM L. 19 P. 60

GRATYCK LITTLE FARM L. 20 P. 16

REGISTER'S OFFICE COUNTY OF MACOMB

Received for Record MARCH 28, 1966 at 9:10 o'clock A.M. and recorded in Vol. 36 of PLATS, on Page 35. Raymond R. Davis, Deputy, Registrar of Deeds.

Description of Land Platted:

The land embraced in the annexed plat of Diane Subdivision of part of Sec. 33 T.2N., R.13E., a replat of lots 1, 2, 75, and part of lot 74 of Supervisor's Plat of McKishine Farm of part of Sec. 33 and 34 T.2N., R.13E., Clinton Twp., Macomb Co., Michigan is described as beginning at a point located 2488.00 ft. N 0 deg. 34 min. W from the South 1/2 post of said Section 33 and proceeding thence N 0 deg. 34 min. W 795.45 ft.; thence S 89 deg. 55 min. E. 233.00 ft.; thence S 0 deg. 34 min. E 330.53 ft.; thence N 89 deg. 55 min. W 80.00 ft.; thence S 0 deg. 34 min. E 154.70 ft.; thence due East 10.00 ft.; thence S 0 deg. 34 min. E 300.00 ft.; thence due West 163.00 ft. to the point of beginning. This plat contains lots 1 thru 13 inclusive.

Surveyor's Certificate:

I hereby certify that the plat hereon delineated is a correct one and that permanent metal monuments consisting of bars not less than one-half inch in diameter and 36 inches in length or shorter bars of not less than one-half inch in diameter lapped over each other at least 6 inches with an over-all length of not less than 36 inches, encased in a concrete cylinder at least 4 inches in diameter and 36 inches in depth have been placed at points marked thus (O) as thereon shown at all angles in the boundaries of the land platted, at all the intersections of streets, intersections of alleys, or of streets and alleys, and at the intersections of streets and alleys with the boundaries of the plat as shown on said plat.

Prepared & drafted by MAVIS KOOPMAN & LANDWEHR, INC. 29400 Van Dyke Warren, Michigan

BY George Koopman Registered Professional Engineer No. 4929

Dedication:

KNOW ALL MEN BY THESE PRESENTS, that we Constance Amore and George Koopman and Jennie Koopman, his wife, as proprietors have caused the land embraced in the annexed plat to be surveyed, laid out, and platted to be known as Diane Subdivision of part of Sec. 33 T.2N., R.13E., a replat of lots 1, 2, 75 and part of lot 74 of Supervisor's Plat of McKishine Farm of part of Sec. 33 and 34 T.2N., R.13E., Clinton Twp., Macomb Co., Michigan, and that the streets as shown on said plat are hereby dedicated to the use of public and that the private easement indicated on said plat are reserved for the use of public utilities or for the specific use noted thereon subject to the regulation and control of the local governmental authorities, and that no permanent structures are to be erected within the lines of said easements.

SIGNED IN THE PRESENCE OF:

Signatures of John J. Ruggiero (Notary Public), Constance Amore, George Koopman, Jennie Koopman, and Willard Dimick.

Acknowledgment:

STATE OF MICHIGAN as Macomb County

On this 21 day of SEPT., 1965 before me, a Notary Public in and for said County appeared Constance Amore known to me to be the person who executed the above dedication, and acknowledged the same to be her free act and deed.

My Commission expires NOV. 16, 1965 Notary Public MACOMB County

Acknowledgment:

STATE OF MICHIGAN as Macomb County

On this 21 day of SEPT., 1965 before me, a Notary Public in and for said County appeared George Koopman and Jennie Koopman, his wife, known to me to be the persons who executed the above dedication, and acknowledged the same to be their free act and deed.

My Commission expires NOV. 16, 1965 Notary Public MACOMB County

Approval by County Plat Board:

This Plat was approved on 2ND day of MARCH, 1966 by the Macomb County Plat Board.

Signatures of Raymond R. Davis, Deputy, Registrar of Deeds; Edna Miller, County Clerk; and Thomas S. Welsh, County Boardman.

Certificate of Municipal Approval:

This Plat was approved by the Township Board of the Township of Clinton at a meeting held Oct. 13, 1965 and that the width of lots is in compliance with requirements of Section 30, Act 172 of 1921, as amended. The foregoing plat as approved complies with the provisions of Section 19 a. of the Plat Act as added by Act 150 of the Public Acts of 1961. Adequate surety has been provided to insure installation of Public Watermain and Sanitary Sewers.

Signature of James J. Walker, Clerk

Approval by Board of County Road Commissioners:

This Plat has been examined and was approved on the 2nd day of November 1965 by the Macomb County Board of Road Commissioners.

Signatures of Ernest W. McCollon, Chairman; Keith Dovensleben, Member; and Lawrence Schumke, Vice-Chairman.

This is to certify that according to the County Treasurer's records there are no tax liens on this property and that taxes are paid for five years previous to date of this instrument.

EXAMINED AND APPROVED Date MAR 25 1966

Signature of Allison Green, State Treasurer, and Richard E. Loucks, Plat Examiner.

Vertical handwritten note: 'Distribution file # 3001 P. 65'

Vertical handwritten note: 'L-56-P-25'

ORIGINAL

SHEET 1 OF 2

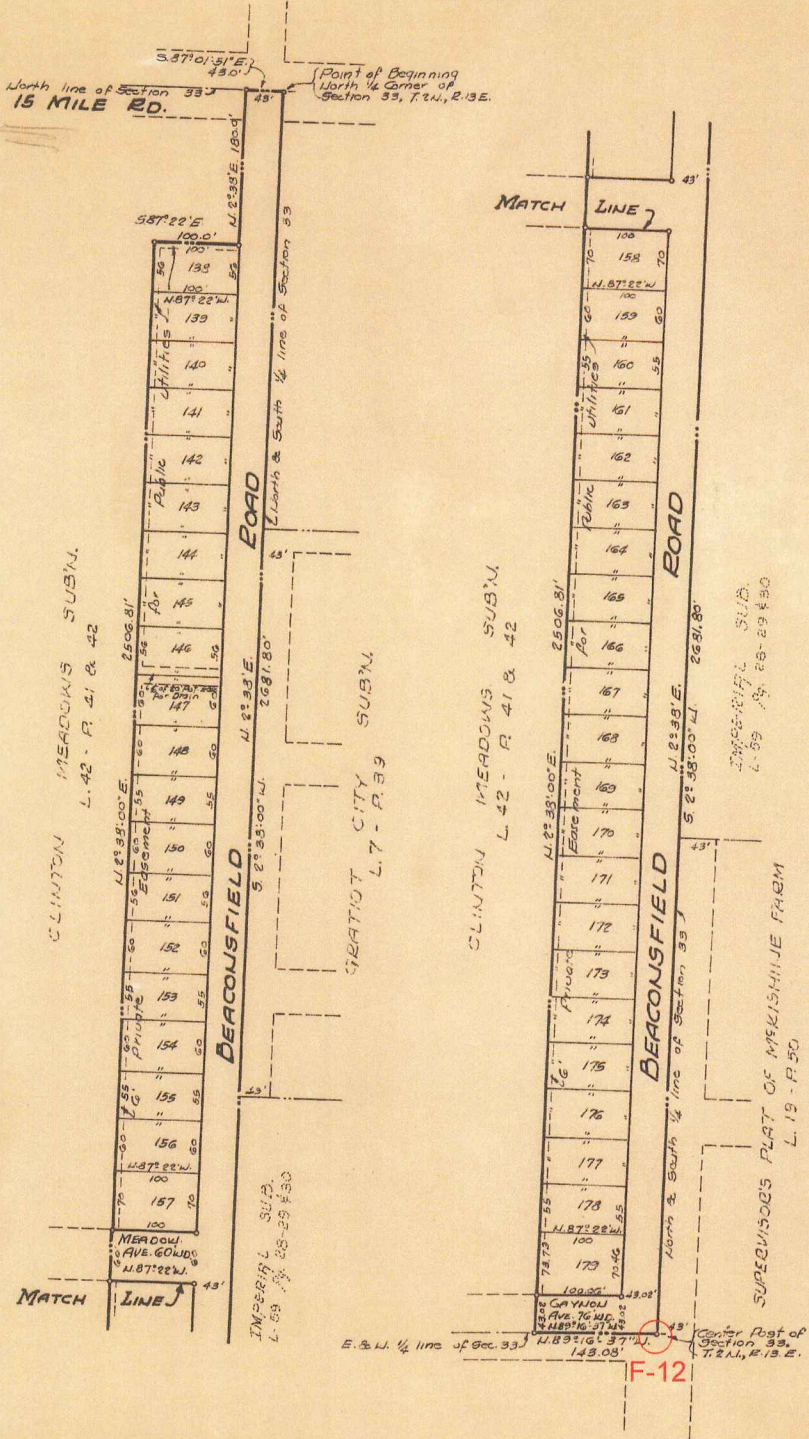
CLINTON MEADOWS SUBDIVISION N^o2 OF PART OF N.W. 1/4 OF SECTION 33, T. 2N., R. 13E. CLINTON TOWNSHIP, MACOMB COUNTY, MICHIGAN

SCALE 1" = 100'



798571

Note: All dimensions shown are given in feet and decimals thereof.



Rechecked Plat 1720 Page 776

L. 56 P. 41

EXAMINED AND APPROVED
Date MAY 19 1966

Allison Green
ALLISON GREEN
STATE TREASURER
By Richard E. Lomas - Plat Examiner

REGISTER'S OFFICE
COUNTY OF MACOMB

Received for Record
May 20, 1966
at 1:40 o'clock P.M. and recorded
in Vol. 56 of PLATS, on
Pages 41 & 42.
Raymond R. Davis
Deputy Register of Deeds

CLINTON MEADOWS SUBDIVISION N22
OF PART OF N.W. 1/4 OF SECTION 33, T.2N., R.13E.
CLINTON TOWNSHIP, MACOMB COUNTY, MICHIGAN

798571

PostNet Company
20731 Coolidge Hwy.
Oak Park 37, Mich.

DESCRIPTION:

The land embraced in the annexed plat of Clinton Meadows Subdivision No. 2 of part of N. W. 1/4 of Section 33, T. 2 N., R. 13 E., Clinton Township, Macomb County, Michigan, comprises Lots 138 to 179, both inclusive, being described as: Beginning at the North 1/4 corner of Section 33, T. 2 N., R. 13 E.; Thence S. 2°-38'-00" W., along the North and South 1/4 line of Section 33, 2681.80' to a point on the East and West 1/4 line of Section 33; Thence N. 89°-16'-37" W., along East and West 1/4 line of Section 33, 143.08'; Thence N. 2°-38'-00" E., along the easterly line of Clinton Meadows Subdivision, as recorded in Liber 42, on Pages 41 and 42, Macomb County Records, 2506.81'; Thence continuing along the line of Clinton Meadows Subdivision (Liber 42 - Pages 41 and 42) and its extension easterly, S. 87°-22'-00" E., 100.0'; Thence N. 2°-38'-00" E., 180.00' to a point on the north line of Section 33; Thence S. 87°-01'-51" E., along the north line of Section 33, 43.0' to the point of beginning.

DEDICATION:

Know all men by these presents, that we, Meadows Land Co., Inc. a Michigan Corporation, by John Palumbo, President, and John T. Soave, Secretary, as proprietors; Samuel B. Keene and Bernice F. Keene, his wife; Morris Axelrod, Irving F. Keene and Jack N. Tucker, Attorney in fact for Jack Malamud and Jennie Malamud, his wife, as mortgagees, have caused the land in the annexed plat to be surveyed, laid out and platted, to be known as Clinton Meadows Subdivision No. 2 of part of N. W. 1/4 of Section 33, T. 2 N., R. 13 E., Clinton Township, Macomb County, Michigan, and that the streets as shown on said plat are hereby dedicated to the use of the public and that the private easements indicated on said plat are reserved for the use of public utilities or for the specific use as noted thereon, subject to the regulation and control of the use thereof by the local governmental authorities, and that no permanent structures are to be erected within the lines of said easements.

CERTIFICATE OF MUNICIPAL APPROVAL:

This plat was approved by the Township Board of Clinton Township at a meeting held on 24 day of April, A. D. 1965, and the width of lots is in compliance with requirements of Section 30, Act 172 of 1929, as amended and the foregoing plat as approved complies with the provisions of Section 19A of the Plat Act as added by Act 150 of the public Acts of 1961.

James J. Walker
James J. Walker, Clerk

CERTIFICATE OF APPROVAL BY THE COUNTY PLAT BOARD:

This Plat was approved on the 20th day of April, 1966 by the Macomb County Plat Board.

Aaron Burr Aaron Burr, Register of Deeds
Lynn Whalen Lynn Whalen, Treasurer
Edna Miller Edna Miller, Clerk
Thomas S. Welsh Thomas S. Welsh, Deputy
Thomas S. Welsh Thomas S. Welsh, Deputy
By: Wm J. Haney, Deputy

CERTIFICATE OF APPROVAL BY THE BOARD OF COUNTY ROAD COMMISSIONERS:

This plat has been examined and was approved on the 12th day of October, 1965, by the Macomb County Board of Road Commissioners.

Ernest W. McCollom Ernest W. McCollom, Chairman
Keith Bovenschen Keith Bovenschen, Member
Lawrence Oehmke Lawrence Oehmke, Vice-Chairman

SURVEYOR'S CERTIFICATE:

I hereby certify the plat hereon delineated is a correct one and that permanent metal monuments consisting of bars not less than one-half inch in diameter and 36 inches in length, encased in a concrete cylinder at least 4 inches in diameter and 36 inches in depth have been placed at points marked thus (o) as thereon shown at all angles in the boundaries of the land platted, at all the intersections of the lines of streets, and at the intersections of the lines of streets with the boundaries of the plat as shown on said plat.

Prepared and Drafted by:

Richard C. Postiff
Richard C. Postiff, No. 8894
Registered Land Surveyor
20731 Coolidge Highway, Oak Park 48237

This is to certify that according to the County Treasurer's records there are no tax liens on this property and that the fee has been fully paid.
JAN 19 1966
L. S. B. P. 42

WITNESSES:

John J. Ruggiero
Diane M. Ehrke
John J. Ruggiero
Diane M. Ehrke
John J. Ruggiero
Diane M. Ehrke

MEADOWS LAND CO., INC.,
a Michigan Corporation
21261 Kelly Road, East Detroit, Michigan
John Palumbo L.S.
John Palumbo, President
John T. Soave L.S.
John T. Soave, Secretary
Samuel B. Keene L.S.
2320 Guardian Building, Detroit, Mich. 48226
Bernice F. Keene L.S.
2320 Guardian Building, Detroit, Mich. 48226
Morris Axelrod L.S.
2320 Guardian Building, Detroit, Mich. 48226
Irving F. Keene L.S.
2320 Guardian Building, Detroit, Mich. 48226

John J. Ruggiero
Willard Dimick

Jack N. Tucker L.S.
Jack N. Tucker, Attorney in fact, for Jack Malamud and Jennie Malamud, his wife 3220 Cadillac Tower, Detroit, Mich. 48226
power of attorney as recorded in Liber 127 page 444 of Macomb County Records.

ACKNOWLEDGMENT:

State of Michigan)
County of Macomb) ss

On this 18 day of AUGUST, 1965, before me, a Notary Public in and for said County, appeared John Palumbo and John T. Soave to me personally known, who being each by me duly sworn, did say that they are the President and Secretary, respectively, of Meadows Land Co., Inc. a Michigan Corporation and that said instrument was signed in behalf of said corporation by authority of its Board of Directors and that said John Palumbo and John T. Soave acknowledged said instrument to be the free act and deed of said corporation. Corporation has no corporate seal.

John J. Ruggiero
John J. Ruggiero
Notary Public Macomb County
My Commission expires: NOV. 16, 1965

ACKNOWLEDGMENT:

State of Michigan)
County of Macomb) ss

On this 16 day of AUGUST, 1965, before me, a Notary Public in and for said County, personally appeared Samuel B. Keene and Bernice F. Keene, his wife, Morris Axelrod, Irving F. Keene, and Jack N. Tucker, Attorney in Fact, for Jack Malamud and Jennie Malamud, his wife, known to me to be the persons who executed the above dedication and acknowledged the same to be their free act and deed.

John J. Ruggiero
John J. Ruggiero
Notary Public Macomb County
My Commission expires: NOV. 16, 1965

REGISTER'S OFFICE
COUNTY OF MACOMB

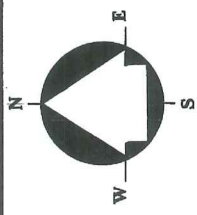
Received for Record
MAY 20, 1966
at 1:40 o'clock P. M., and recorded
in Vol. 56 of PLATS, on
Pages 41 and 42.
Raymond R. Raig
Register of Deeds

Produced Pursuant to Court Order in Case No. 77-20026
L.S.B.P.42

ELM FOREST SUBDIVISION

Register # C002486

A PART OF THE SOUTHEAST 1/4 OF SECTION 33, AND PART OF THE SOUTHWEST 1/4 OF SECTION 34, T.2N., R.13E. CLINTON TOWNSHIP ~ MACOMB COUNTY ~ MICHIGAN



SCALE 1 INCH = 50 FEET
CENTER POST
SECTION 33
T.2N., R.13E.
(RECORDED IN
LIBER 5810 PAGE 83)

F-12
EAST 1/4 CORNER
OF SECTION 33
(LIBER 613 PAGE 172)

POINT OF
BEGINNING

LITTLE MACK
AVE. 120' WD.

LITTLE MACK
AVE. 93' WD.

LITTLE MACK
AVE. 27' WD.

LITTLE MACK
AVE. 60' WD.

LITTLE MACK
AVE. 27' WD.

LITTLE MACK
AVE. 93' WD.

LITTLE MACK
AVE. 27' WD.

LITTLE MACK
AVE. 60' WD.

LITTLE MACK
AVE. 27' WD.

LITTLE MACK
AVE. 93' WD.

LITTLE MACK
AVE. 27' WD.

LITTLE MACK
AVE. 60' WD.

LITTLE MACK
AVE. 27' WD.

LITTLE MACK
AVE. 93' WD.

LITTLE MACK
AVE. 27' WD.

LITTLE MACK
AVE. 60' WD.

LITTLE MACK
AVE. 27' WD.

LITTLE MACK
AVE. 93' WD.

LITTLE MACK
AVE. 27' WD.

LITTLE MACK
AVE. 60' WD.

LITTLE MACK
AVE. 27' WD.

LITTLE MACK
AVE. 93' WD.

LITTLE MACK
AVE. 27' WD.

EXISTING 20' EASEMENT FOR STORM SEWER (LIBER 4258 PAGE 847)
SUPERVISORS PLAT OF GRATIOT LITTLE FARMS SUB. L20 P.16

S.89°36'00"E. 675.77

N.00°24'00"E. 136.00

N.00°24'00"E. 136.00

N.00°24'00"E. 136.00

N.00°24'00"E. 136.00

N.00°24'00"E. 136.00

N.00°24'00"E. 136.00

N.00°24'00"E. 136.00

N.00°24'00"E. 136.00

N.00°24'00"E. 136.00

N.00°24'00"E. 136.00

N.00°24'00"E. 136.00

N.00°24'00"E. 136.00

N.00°24'00"E. 136.00

N.00°24'00"E. 136.00

N.00°24'00"E. 136.00

N.00°24'00"E. 136.00

N.00°24'00"E. 136.00

N.00°24'00"E. 136.00

N.00°24'00"E. 136.00

N.00°24'00"E. 136.00

N.00°24'00"E. 136.00

N.00°24'00"E. 136.00

ELM FOREST CT. 60 FEET WD.

PIPER'S BROAD ACRES SUB. L4 P.69

PLAT LEGEND

- ALL DIMENSIONS ARE IN FEET.
- ALL CURVILINEAR DIMENSIONS ARE SHOWN ALONG THE ARC.
- (F) DENOTES A RADIAL LINE.
- (NR) DENOTES A NON-RADIAL LINE.
- THE SYMBOL "S" INDICATES A MONUMENT WHICH IS A 1/2" DIAMETER STEEL BAR 36" LONG, ENCASED IN 4" DIAMETER CONCRETE.
- ALL OTHER LOT CORNERS HAVE BEEN MARKED WITH AN IRON BAR 1/2" IN DIAMETER AND 18" IN LENGTH.
- BEARINGS ARE IN ACCORDANCE WITH THOSE RECORDED IN SUPERVISORS PLAT OF GRATIOT LITTLE FARMS " RECORDED IN LIBER 20 PAGE 16.



CURVE CHART			
NO.	RADIUS	ARC	DELTA
1.	44.00	34.28	44°38'20"
2.	60.00	28.96	269°15'07"
3.	44.00	34.28	44°38'20"
			CHORD BEARING
			33.42
			85.39
			33.42

SOUTHEAST
CORNER OF
SECTION 33
(LIBER 2872 PAGE 57)

GEORGE JEROME & CO.



LOCATION MAP
NO SCALE

UNPLATTED

S.00°24'00"W. 153.43

S.00°24'00"W. 153.43

S.00°24'00"W. 153.43

S.00°24'00"W. 153.43

S.00°24'00"W. 153.43

S.00°24'00"W. 153.43

S.00°24'00"W. 153.43

S.00°24'00"W. 153.43

S.00°24'00"W. 153.43

S.00°24'00"W. 153.43

S.00°24'00"W. 153.43

S.00°24'00"W. 153.43

S.00°24'00"W. 153.43

S.00°24'00"W. 153.43

S.00°24'00"W. 153.43

S.00°24'00"W. 153.43

S.00°24'00"W. 153.43

S.00°24'00"W. 153.43

S.00°24'00"W. 153.43

S.00°24'00"W. 153.43

S.00°24'00"W. 153.43

S.00°24'00"W. 153.43

S.00°24'00"W. 153.43

S.00°24'00"W. 153.43

S.00°24'00"W. 153.43

S.00°24'00"W. 153.43

S.00°24'00"W. 153.43

S.00°24'00"W. 153.43

S.00°24'00"W. 153.43

S.00°24'00"W. 153.43

S.00°24'00"W. 153.43

S.00°24'00"W. 153.43

S.00°24'00"W. 153.43

S.00°24'00"W. 153.43

S.00°24'00"W. 153.43

S.00°24'00"W. 153.43

S.00°24'00"W. 153.43

S.00°24'00"W. 153.43

S.00°24'00"W. 153.43

S.00°24'00"W. 153.43

S.00°24'00"W. 153.43

S.00°24'00"W. 153.43

S.00°24'00"W. 153.43

S.00°24'00"W. 153.43

S.00°24'00"W. 153.43

S.00°24'00"W. 153.43

S.00°24'00"W. 153.43

S.00°24'00"W. 153.43

S.00°24'00"W. 153.43

S.00°24'00"W. 153.43

S.00°24'00"W. 153.43

S.00°24'00"W. 153.43

ELM FOREST SUBDIVISION

A PART OF THE SOUTHEAST 1/4 OF SECTION 33, AND PART OF THE SOUTHWEST 1/4 OF SECTION 34, T.2N., R.13E. CLINTON TOWNSHIP ~ MACOMB COUNTY ~ MICHIGAN

SURVEYOR'S CERTIFICATE

- WILLIAM J. COULTER, SURVEYOR, CERTIFY: THAT I HAVE SURVEYED, DIVIDED, AND MAPPED THE LAND SHOWN ON THIS PLAT, DESCRIBED AS FOLLOWS:
ELM FOREST SUBDIVISION, PART OF THE SOUTHEAST 1/4 OF SECTION 33 AND PART OF THE SOUTHWEST 1/4 OF SECTION 34, T.2N., R.13E., CLINTON TOWNSHIP, MACOMB COUNTY, MICHIGAN, MORE PARTICULARLY DESCRIBED AS FOLLOWS:
COMMENCING AT THE SOUTH 1/4 CORNER OF SAID SECTION 33, THENCE DUE NORTH 2155.00 FEET ALONG THE NORTH-SOUTH 1/4 LINE OF SECTION 33 AND FOLLOWING BEAconsFIELD AVENUE AS DESCRIBED IN "SUPERVISOR'S PLAT OF GRATIOT LITTLE FARMS" AS RECORDED IN LIBER 20, PAGE 16 OF PLATS, MACOMB COUNTY RECORDS; THENCE S.89°36'00"E. 2,651.33 FEET ALONG THE SOUTH LINE OF SAID SUBDIVISION TO THE POINT OF BEGINNING ON THE EASTERLY LINE OF LITTLE MACK AVE., 66 FEET WIDE (120 FEET WIDE AS PLATTED IN SAID "SUPERVISOR'S PLAT OF GRATIOT LITTLE FARMS"); THENCE CONTINUING S.89°36'00"E. 675.77 FEET; THENCE S.00°24'00"W. 332.66 FEET TO A POINT ON THE NORTH LINE OF "PIPERS BROAD ACRES SUBDIVISION" AS RECORDED IN LIBER 4, PAGE 69 OF PLATS, MACOMB COUNTY RECORDS; THENCE N.89°41'47"W. (RECORDED AS N.89°09'W.) 674.33 FEET ALONG THE NORTH LINE OF SAID PIPERS BROAD ACRES SUBDIVISION TO A POINT ON THE EASTERLY LINE OF SAID LITTLE MACK AVE., 66 FEET WIDE, 150 FEET WIDE AS PLATTED IN SAID "PIPERS BROAD ACRES SUBDIVISION"; THENCE N.00°09'07"E. 333.79 FEET ALONG SAID EASTERLY LINE TO THE POINT OF BEGINNING.
- CONTAINING 51.6 ACRES AND COMPRISING 20 LOTS, NUMBERED 1 THRU 20.
- THAT I HAVE MADE SUCH SURVEY, LAND DIVISION AND PLAT BY THE DIRECTION OF THE OWNERS OF SUCH LAND.
- THAT SUCH PLAT IS A CORRECT REPRESENTATION OF ALL THE EXTERIOR BOUNDARIES OF THE LAND SURVEYED AND THE SUBDIVISION OF IT.
- THAT THE REQUIRED MONUMENTS AND LOT MARKERS HAVE BEEN LOCATED IN THE GROUND OR THAT SURETY HAS BEEN DEPOSITED WITH THE MUNICIPALITY AS REQUIRED BY SECTION 126 OF THE ACT.
- THAT THE ACCURACY OF SURVEY IS WITHIN THE LIMITS REQUIRED BY SECTION 126 OF THE ACT.
- THAT THE BEARINGS SHOWN ON THE PLAT ARE EXPRESSED AS REQUIRED BY SECTION 126 (3) OF THE ACT AND AS EXPLAINED IN THE LEGEND.

GEORGE JEROME & CO.
28312 HAYES RD.
ROSEVILLE, MI. 48066

William J. Coulter
WILLIAM J. COULTER, R.L.S. #14760
VICE PRESIDENT



DATE 5/5/93

COUNTY TREASURERS CERTIFICATE

THE RECORDS IN MY OFFICE SHOW NO UNPAID TAXES OR SPECIAL ASSESSMENTS FOR THE FIVE YEARS PRECEDING May 17, 1993 INVOLVING THE LAND INCLUDED IN THIS PLAT.
Harold O. Congdon, Jr.
HAZEL B. CONGDON, DEPUTY TREASURER
MACOMB COUNTY, MICHIGAN

COUNTY DRAIN COMMISSIONER'S CERTIFICATE

APPROVED ON MAY 25, 1993 AS COMPLYING WITH SECTION 192 OF ACT 288, P.A. 1967 AND THE APPLICABLE RULES AND REGULATIONS PUBLISHED BY MY OFFICE IN THE COUNTY OF MACOMB.
Anthony V. Marrocco
ANTHONY V. MARROCCO DRAIN COMMISSIONER

COUNTY PLAT BOARD CERTIFICATE

THIS PLAT HAS BEEN REVIEWED AND IS APPROVED BY THE MACOMB COUNTY BOARD ON November 11, 1993 AS BEING IN COMPLIANCE WITH ALL OF THE PROVISIONS OF ACT 288, P.A. 1967, AND THE PLAT BOARD'S APPLICABLE RULES AND REGULATIONS.
Mark A. Stenbeck
MARK A. STENBECK
CHAIRPERSON
BOARD OF COUNTY COMMISSIONERS
Garnella Sabraugh
GARNELLA SABRAUGH, COUNTY CLERK
REGISTER OF DEEDS
Candice S. Miller
CANDICE S. MILLER, COUNTY TREASURER

Mark A. Stenbeck
MARK A. STENBECK
CHAIRPERSON
BOARD OF COUNTY COMMISSIONERS

Garnella Sabraugh
GARNELLA SABRAUGH, COUNTY CLERK
REGISTER OF DEEDS

Candice S. Miller
CANDICE S. MILLER, COUNTY TREASURER

CERTIFICATE OF MUNICIPAL APPROVAL

I HEREBY CERTIFY THAT THIS PLAT WAS APPROVED BY THE BOARD OF TRUSTEES OF THE CHARTER TOWNSHIP OF CLINTON, AT A MEETING HELD ON November 24, 1993 AND WAS REVIEWED AND FOUND TO BE IN COMPLIANCE WITH ACT 288, P.A. 1976, THAT PUBLIC WATER AND PUBLIC SEWER SERVICES HAVE BEEN INSTALLED AND ARE READY FOR CONNECTION, THE TOWNSHIP HAS ADOPTED ZONING AND SUBDIVISION CONTROL ORDINANCES AND THAT THE PLAT COMPLETES THE REQUIREMENTS OF ACT 288, P.A. 1967, AND THAT THE PLAT HAS BEEN PLATTED IN THE TOWNSHIP OFFICE FOR THE PLACING OF MONUMENTS AND LOT MARKERS, WITHIN ONE YEAR FROM THE ABOVE DATE.

Dennis C. Tomlinski
DENNIS C. TOMLINSKI
CLERK

PROPRIETORS CERTIFICATE

WE AS PROPRIETORS CERTIFY THAT WE CAUSED THE LAND EMBRACED IN THIS PLAT TO BE SURVEYED, DIVIDED, MAPPED AND DEDICATED AS REPRESENTED ON THIS PLAT, AND THAT THE STREETS ARE FOR THE USE OF THE PUBLIC, THAT THE PUBLIC UTILITY EASEMENTS ARE PRIVATE EASEMENTS AND THAT ALL OTHER EASEMENTS ARE FOR THE USES SHOWN ON THE PLAT.

WITNESSES:
William J. Coulter
WILLIAM J. COULTER
James E. Dyer
JAMES E. DYER

John DiStefano
JOHN DI STEFANO
5075 HATHOR ROAD
NEW BALTIMORE
MICHIGAN 48047

ACKNOWLEDGEMENT

STATE OF MICHIGAN)
MACOMB COUNTY)

PERSONALLY CAME BEFORE ME THIS 5 DAY OF MAY, 1993 THE ABOVE NAMED JOHN DI STEFANO AND LYNN DI STEFANO, HUSBAND AND WIFE, TO ME KNOWN TO BE THE PERSONS WHO EXECUTED THE FOREGOING INSTRUMENT AND ACKNOWLEDGED THAT THEY EXECUTED THE SAME AS THEIR FREE ACT AND DEED.

NOTARY PUBLIC *Bruce Merlo* MACOMB COUNTY, MICHIGAN
BRUCE MERLO

MY COMMISSION EXPIRES SEPTEMBER 14, 1996

EXAMINED AND APPROVED
Date Dec. 27, 1993
BY THE DEPARTMENT
OF COMMERCE
Richard E. Lomas, PLS
Register, Plat Section

CERTIFICATE OF COUNTY ROAD COMMISSIONER'S

APPROVED ON June 1, 1993 AS COMPLYING WITH SECTION 183 OF ACT 288, P.A. 1967 AND THE APPLICABLE PUBLISHED RULES AND REGULATIONS OF THE BOARD OF ROAD COMMISSIONERS OF MACOMB COUNTY.

John J. Zoccola
JOHN J. ZOCCOLA
CHAIRPERSON

Mary Louise Danier
MARY LOUISE DANIER
VICE CHAIRPERSON

Thomas S. Welsh
THOMAS S. WELSH
COMMISSIONER

RECORDING CERTIFICATE

STATE OF MICHIGAN)
MACOMB COUNTY)

THIS PLAT WAS RECEIVED FOR RECORD ON THE 4th DAY OF January, 1994, AT 9:01 A.M. AND RECORDED IN LIBER 101 OF PLATS ON PAGES 49, 44

Lois M. Dywask
LOIS M. DYWASK
CHIEF DEPUTY REGISTER OF DEEDS
by *Judith A. Biebuyck*
JUDITH A. BIEBUYCK, Super Visor of Records

