

LAND CORNER RECORDATION CERTIFICATE
 Filing Requirement of Act 74, Mich. P.A. 1970

C152279

or corners in

MACOMB
 (County)

Located In:
CLINTON

Corner Code #

94 DEC 14 AM 10:55

STATE OF MICHIGAN
 REGISTERED
 RECORDS
 CLINTON COUNTY, MT

LIBER 6527 PAGE 856

Register of Deeds Stamp & File Number

Public Land Survey T 2N R 13E E-13
 T R
 T R
 T R
 T R
 Property Controlling in Section S T R
 S T R
 Miscellaneous Property in Sec. S T R
 S T R
 Lot No. , Recorded Plat
 Private Claims

A	B	C	D	E	F	G	H	I	J	K	L	M
2	0	5	4	3	2							
3												
4	7	8	9	10	11	12						
5												
6	18	17	16	15	14	13						
7												
8	18	20	21	22	23	24						
9												
10	30	29	28	27	26	25						
11												
12	31	32	33	34	35	36						
13												

STEVEN E. DUNN, in a field survey on MARCH 20, 19 94, hereby certify that under requirements of P.A. 74, Michigan P.A. of 1970, the corner points mentioned in lines 1 and 2 above were in conformance with regulations and rules therefore required in the current manual of survey instructions of the United States Department of the Interior, Bureau of Land Management or by a decree of a Court of Law and /or that the corner points mentioned in lines 3, 4 and 5 above were in conformance with the rules of the Michigan Board of Land Surveyors or by a Decree of a Court of Law; established, re-established, monumented, re-monumented, recovered, found as expressed below:

NOTE: Not more than 4 corners, all in the same town and range, may be recorded on this certificate.

1. Description of original monument and accessories and/or subsequent restoration:

GLO POST - NO EVIDENCE OF ORIGINAL CORNER FOUND

GLO ORIGINAL SURVEY

L.C.R.C. E-1, T.1N., R.13E	NAME AND NUMBER	DESCRIPTION	DATE
L. 3551 P. 378	WILLIAM E. SODERBERG, #17635	FOUND 1-1/4" PIPE IN MONUMENT BOX	OCTOBER 13, 1983

PLAT			
L. 03 P. 161	HARMON FARMS	JULY 26, 1919	
L. 17 P. 030	SUPERVISOR'S PLAT NO. 2	JULY 21, 1936	

2. Description of corner evidence found and/or method applied in restoring or reestablishing corner:

E-13 SECTION CORNER COMMON TO E-1 ERIN/LAKE TOWNSHIP

FOUND 1/2" IRON ROD IN MONUMENT BOX IN CONCRETE PAVEMENT VERIFIED LOCATION BY COMPARING FOUND WITNESSES OF L.C.R.C. LISTED BELOW AND DISTANCE FROM E-13 TO D-13 AS SHOWN ON SUPERVISOR'S PLAT NO. 2 LISTED ABOVE AND ON MDOT R/W MAP, MACOMB COUNTY, SHEET 79. ALSO COMPARED DISTANCE FROM E-13 TO F-13 AS SHOWN ON PLAT HARMON FARMS LISTED ABOVE.

FOUND WITNESS TIES

L. 3551 P. 378	S.45°E. 123.63'	NORTHWEST CORNER BRICK APARTMENT BUILDING
	N.40°E. 140.76'	SOUTHWEST CORNER BRICK BUILDING

FIELD MEASUREMENTS AND RECORDED DISTANCES

E-13 TO D-13	2703.12' (M.)	2640.00' G.L.O. (R.)
E-13 TO F-13	2699.14' (M.)	2640.00' G.L.O. (R.)
E-13 TO E-12	2586.80' (M.)	

3. Description of monument for corner and accessories established to perpetuate locating the position of the corner:

E-13 T.2N., R.13E. I REPLACED 1/2" IRON ROD WITH A 3/4" x 24" IRON ROD WITH 2" DIAMETER ALUMINUM CAP STAMPED "MACOMB COUNTY MONUMENT MI ACT 345 #28408 IN AN EXISTING MONUMENT BOX.

WITNESSES

S.48°W. 67.49'	LIGHT POLE
N.43°W. 64.09'	PK NAIL IN UTILITY POLE
N.44°E. 140.74'	SOUTHWEST CORNER OF BRICK BUILDING
S.41°E. 123.45'	NORTHWEST CORNER OF BRICK APARTMENT BUILDING
S.33°E. 56.82'	PK NAIL IN UTILITY POLE



ACCEPTED BY THE MACOMB COUNTY SURVEY PEER GROUP AS THE OFFICIAL CORNER UNDER MICHIGAN PUBLIC ACT 345 OF 1990 AT A MEETING HELD ON 10-4-94
William E. Soderberg
 WILLIAM E. SODERBERG, P.S., CHAIRMAN

THE SELECTED LOCATION IS ACCEPTED BY ME AND IS GENERALLY ACCEPTED BY PROFESSIONAL SURVEYORS AS THE BEST AVAILABLE EVIDENCE OF THE POSITION OF THE ORIGINAL CORNER

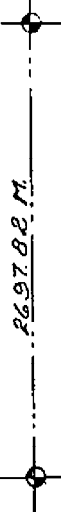
Signed by Steven E. Dunn Date Nov. 9, 1994
 Surveyor's Michigan License No. 28408



CLINTON TWP.

SEC. 31

SEC. 32



89°51'16" N.
89°52'00" (A.P.#3)

90°10'45" N.
90°11'36" (KENNEDY SUB.)
90°10'36" (A.P.#4)



2697.74 M.
2697.50 (A.P.#3)

2713.74 M.
2713.14 (GARFIELD PARK SUB. NO.1)

SEC. 6

SEC. 5

ERIN - LAKE TWP.

50 SHEETS
100 SHEETS
200 SHEETS



LAND CORNER RECORDATION CERTIFICATE

FILING REQUIREMENT OF ACT 74, MICH. P.A.1970

FOR CORNERS OF--	ERIN	LOCATED IN--	SECT. 5	CORNER CODE NUMBER
1. PUBLIC LAND SURVEY	5	T. 1	N. 13 E.	E-1; E-2:
2. PROPERTY CONTROLLING IN SECTION		T.	N. S. R. E. W.	
3. MISCELLANEOUS PROPERTY IN SECTION		T.	N. S. R. E. W.	
4. LOT NO.	, RECORDED PLAT			
5. PRIVATE CLAIMS				

A824550
 RECORDED IN MACOMB COUNTY RECORDS AT: **9:22 A.M.**
OCT 13 1983
Edina Kuller
 CLERK - REGISTER OF DEEDS
 MACOMB COUNTY, MICHIGAN
 REGISTER OF DEEDS STAMP AND FILING NUMBER

I, William E. Soderberg do hereby certify that under requirements of P.A. 74, Michigan P.A. of 1970 the corner points mentioned in lines 1 and 2 above (identified with circles on index code diagram - over) were, in field survey on December 1 1980, established, re-established, monumented, re-monumented, recovered, restored as expressed below and in conformance with regulations and rules therefore as required in the current manual of survey instructions of the United States Department of the Interior, Bureau of Land Management or by a decree of court of law. Furthermore, that the corner points mentioned in lines 3, 4 and 5 above were, in a field survey on 19, found, recovered, restored, established or re-established as expressed below and in conformance with the rules of the Michigan State Board of Registration for Land Surveyors or, by a Decree of a Court of law:

A. Description of original monument and accessories and/or subsequent restoration:

B. Description of corner evidence found and/or method applied in restoring or re-establishing corner:

<p>E-1 C. Description of monument for corner and accessories established to perpetuate locating the position of the corner: NORTHEAST CORNER, FOUND 1 1/4" PIPE IN MONUMENT BOX (E-1) S. 45° E. 123.63 N.W. CORNER BRICK APARTMENT BUILDING N. 40° E. 140.76 S.W. CORNER BRICK BLDG. S. 37° W. 66.21 CENTERLINE TRAFFIC SIGNAL N. 45° W. 85.05 CENTERLINE STEEL ANCHOR POST</p>	<p>E-2 EAST QUARTER POST, FOUND 1" STEEL ROD IN MONUMENT BOX (E-2) S. 60° W. 161.55 N.E. CORNER 1 APARTMENT BLDG. S. 37° E. 147.73 N.W. CORNER 1 7-11 STORE N. 26° W. 47.98 SPIKE IN LIGHT POLE N. 13° E. 19.39 P.K. IN UTIL POLE</p>
--	---

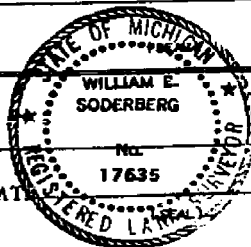
SIGNED BY William E. Soderberg DATE AUGUST 18, 1983

SURVEYOR'S MICHIGAN REGISTRATION NO. 17635

FOR STATE AND UNITED STATES AGENCIES:

SIGNED BY _____ DATE _____
CHIEF OF SURVEY PARTY

APPROVED AND SIGNED BY _____ DATE _____
MICHIGAN REGISTERED LAND SURVEYOR

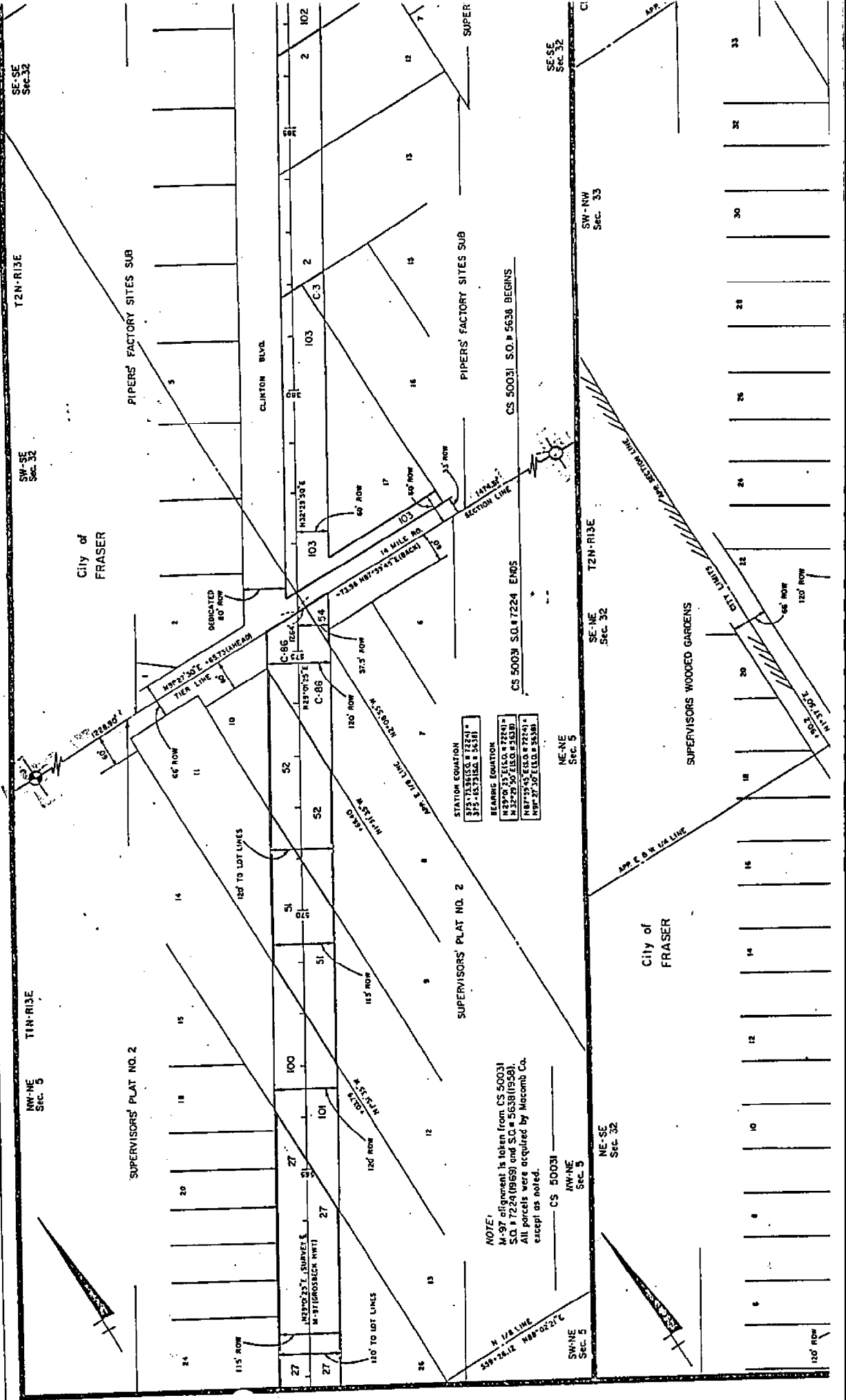


SURVEYOR'S MICHIGAN REGISTRATION NO. _____

01116

3

E-13



STATION EQUATION	
373.151600	= 7224 + 5280
373.151600	= 5438

BEARING EQUATION	
N 37° 00' 00" E	= 7224 + 5280
N 37° 00' 00" E	= 5438
N 37° 00' 00" E	= 7224 + 5280
N 37° 00' 00" E	= 5438

NOTE:
 M-97 agreement is taken from CS 50031
 S.O. # 7224 (869) and S.O. # 5638 (1958).
 All parcels were acquired by Macomb Co.
 except as noted.

CS 50031
 NW-NE
 Sec. 5

SW-NE
 Sec. 5

NE-NE
 Sec. 5

SE-NE
 Sec. 32

SW-NW
 Sec. 33

SE-SE
 Sec. 32

SE-SE
 Sec. 32

NW-NE
 Sec. 5

SW-SE
 Sec. 32

T2N-R1E

SE-SE
 Sec. 32

SUPERVISORS' PLAT NO. 2

PIPERS' FACTORY SITES SUB

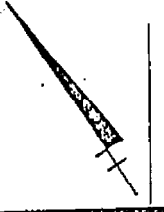
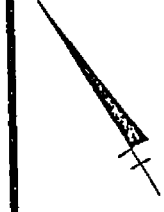
SUPERVISORS' PLAT NO. 2

PIPERS' FACTORY SITES SUB

City of FRASER

City of FRASER

SUPERVISORS' WOODED GARDENS

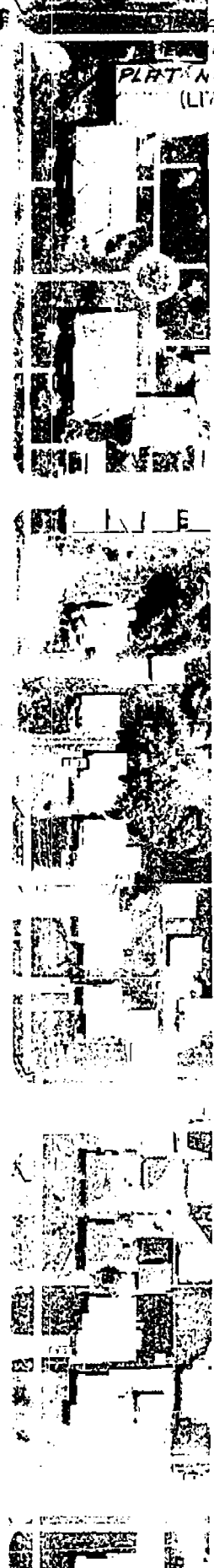
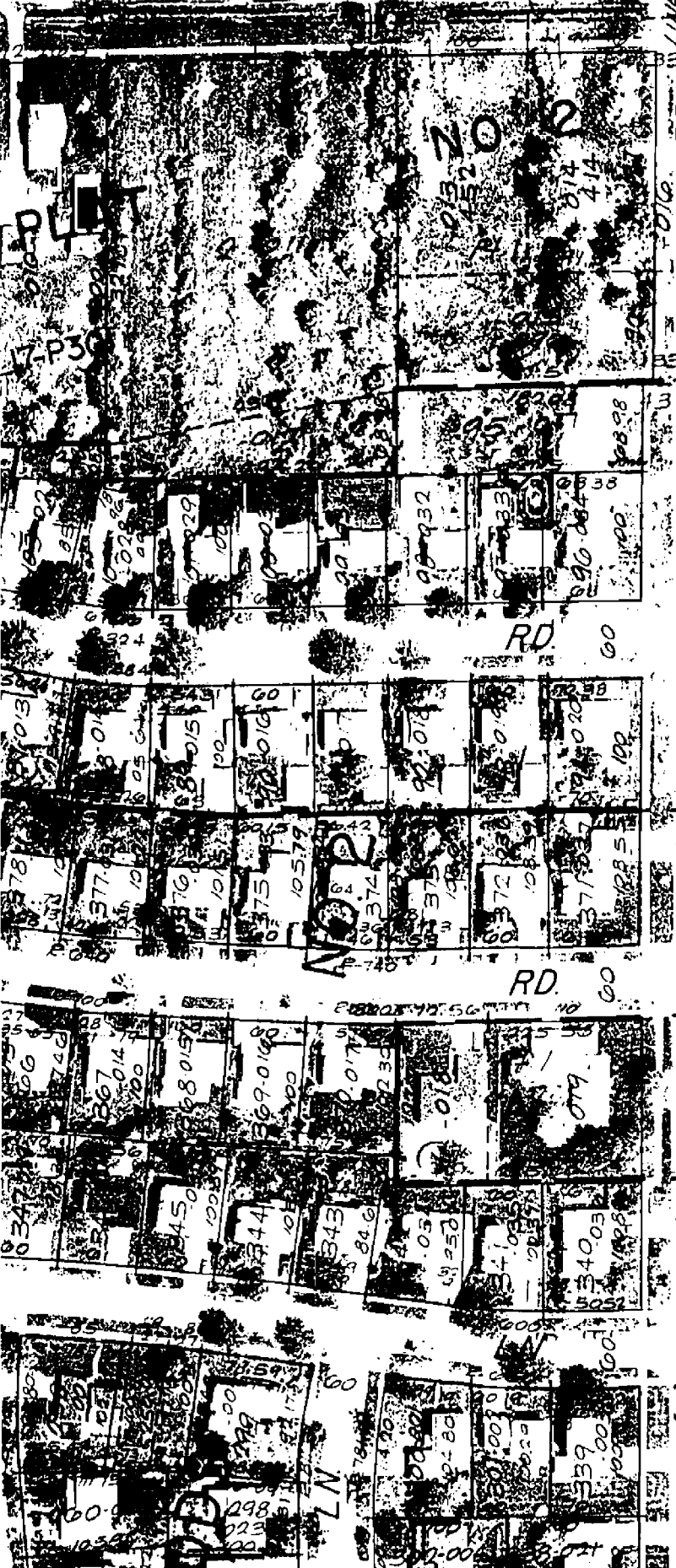


W.E. COR.

RD

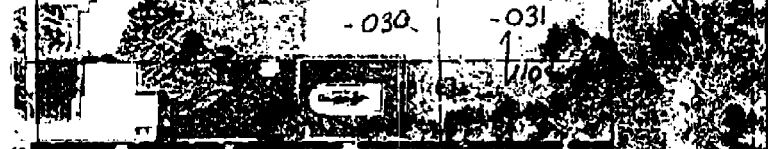
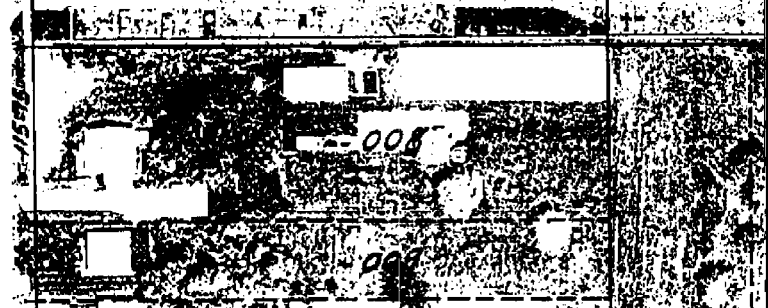
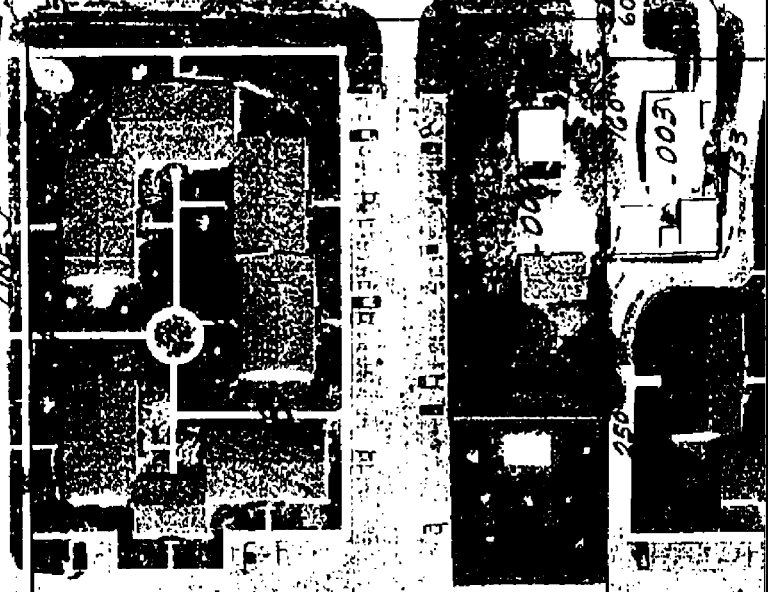
W LINE
RD
T-016

PLAT NO 2
(L17-118)

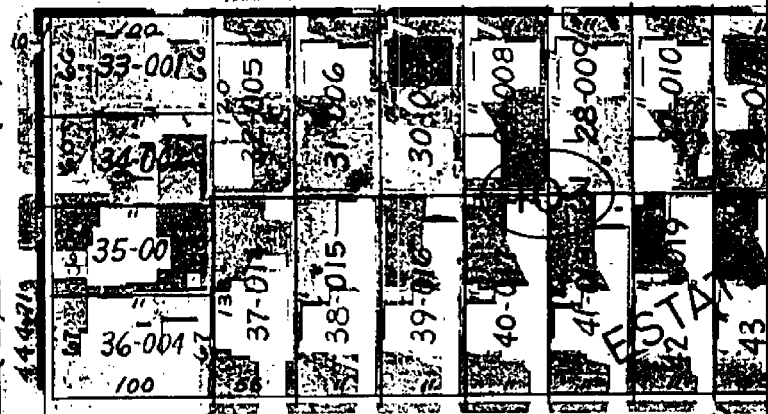


14 MILE ROSEVILLE

LIVE RD

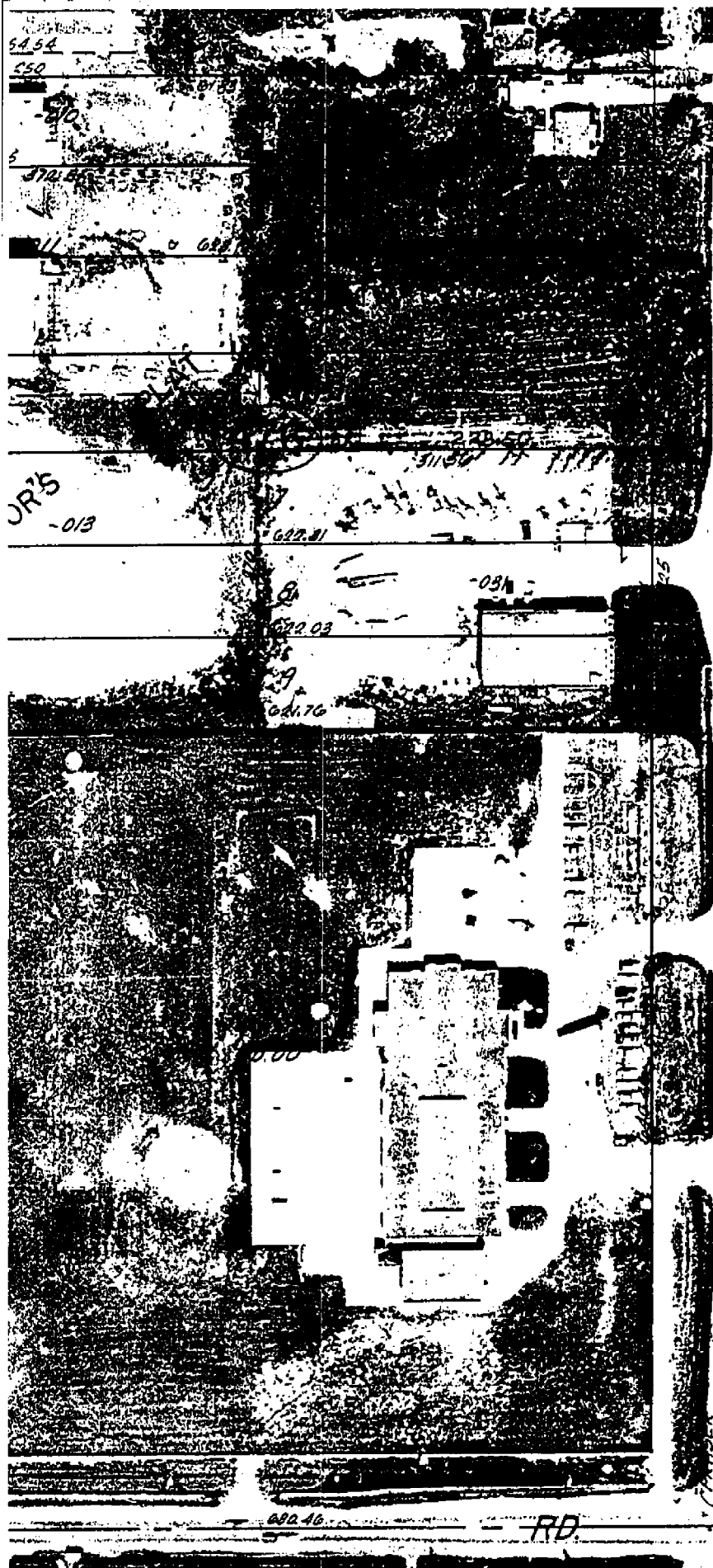


50 VOILAND



ROSEGARDEN

E-13



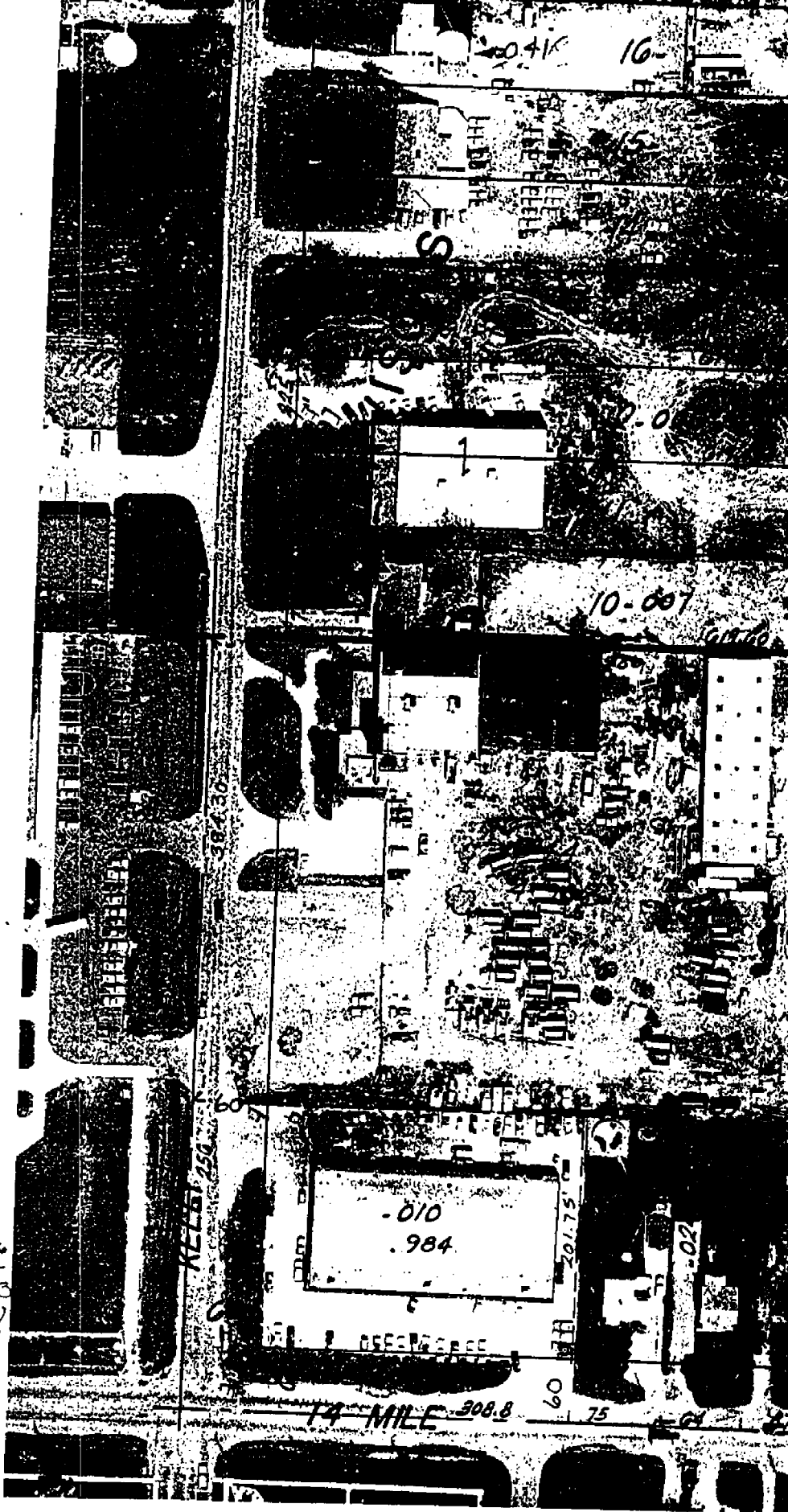
MACOMB COUNTY, MICHIGAN

SCALE: 1" = 100'

S.E. COR

N. R.13E. E-13

11-32H



REV. 5-86
REV. 5-85
REV. 7-83
REV. 1-80
REV. 1-77
REV. 12-77
REV. 4-76
REV. 4-75

Copyright 1972
MACOMB COUNTY

SCALE: 1" = 100'

11-33 E

F-13

W. 1/2 S.W.

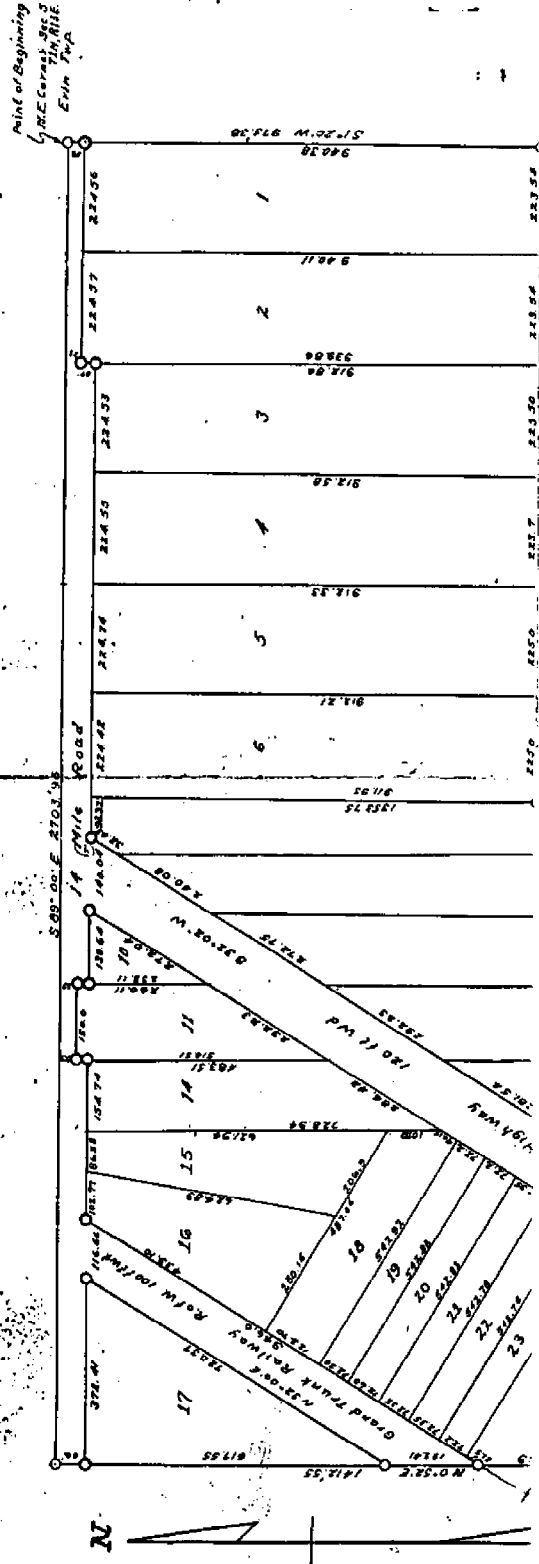
Original

"SUPERVISORS PLAT No 2," PART OF NE 1/4 SEC 5, T14N, R13E, ERIN TOWNSHIP, MARCOMB COUNTY, MICHIGAN

Scale - 1 Inch = 200 FT.

NOTE: All dimensions hereon are in feet and decimals thereof.

8656



July 14-1919
J. P. Haverly

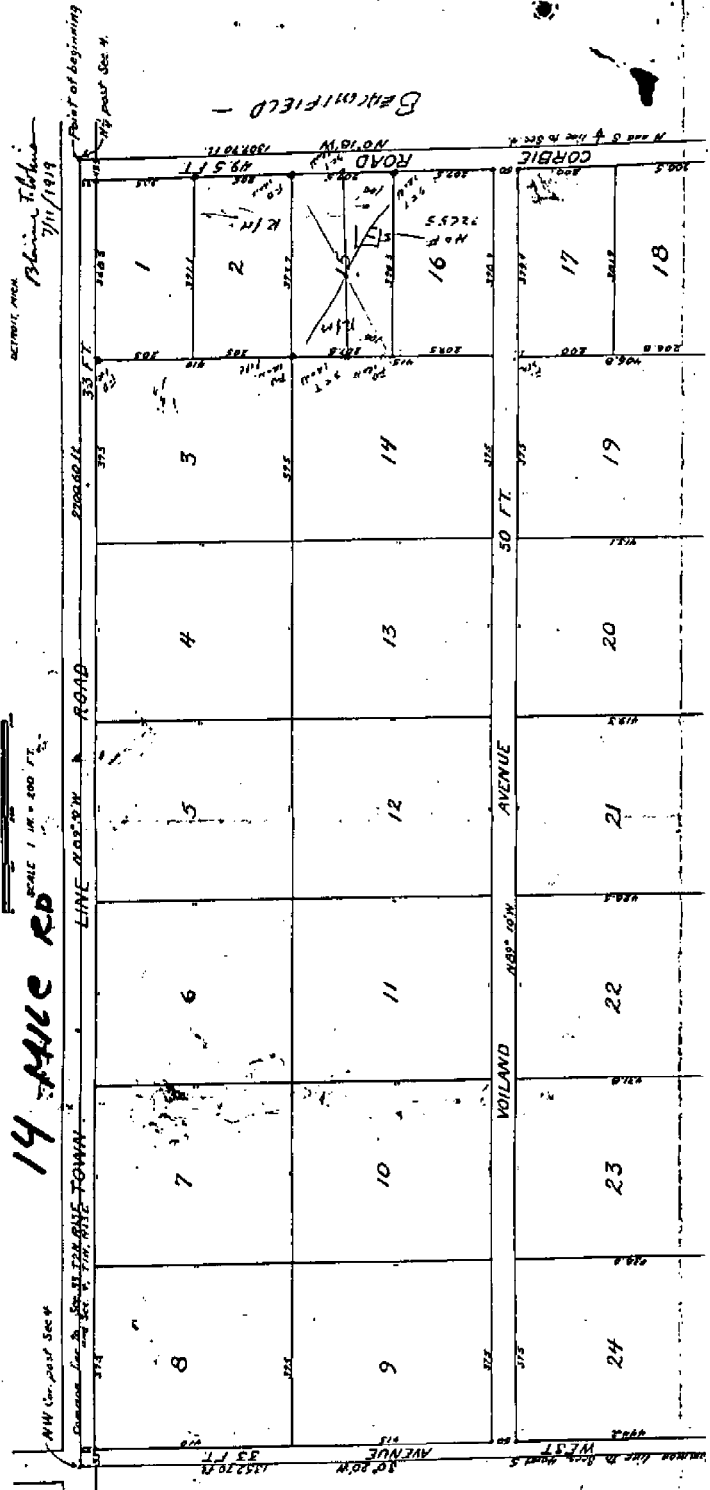
HARMON FARMS

A SUBDIVISION OF
THE N 1/2 OF THE NW 1/4 OF SEC. 4, T19N, R13E.

ERIN TOWNSHIP,
MACOMB COUNTY,
MICHIGAN

ALL DIMENSIONS ARE IN
FEET AND DECIMALS THEREOF

COUNTY AND MAPPING
CORRECTION AND CONSTRUCTION OFFICE
TREASURER'S OFFICE
DETROIT, MICH.
Blair T. Blair
7/11/1919



L. 3
P. 161

Town 2 North Range 13 East

Town Lines

South Boundary

East from Post Cor R142 N.P. 12+13 E
 from which a Gum 12 in diam bears S 117° 18' E dist
 also a W Oak 36 in diam bears N 31° 11' 41" E dist

6.58 B. Oak 24 in diam
 19.50 Marsh
 33.30 Left Marsh
 36.00 Marsh
 40.00 Made 1/4 Sec Cor on a willow 8 in diam
 40.50 Left Marshy
 43.62 W.O. 24 in diam
 80.00 Made Cor for Sections 5, 6, 31, 32 on
 a Hornbeam 3 in diam
 Land 1st half mile 3rd rate
 last 1/2 mile 2nd rate front dry
 Timber W.O. B. Oak White Willow
 Hornbeam + C.

East

41.00 Made 1/4 Sec. Cor on a
 Hickory 7 in diam
 66.08 W.O. 30 inch diam
 80.00 Made Cor for sections 4, 5, 32+33 on
 a Sycamore - 40 inches diameter
 Level and dry 3rd rate Timber
 W.Oak. Lyrms Poplar Beech Sugar
 + 10 Redgt. Spruce + C.

40.00 Made 1/2 mile cor on an
 Elm 18 in diam
 49.00 Lyrms 14 in diam
 80.00 Set front for sections 3, 4, 33+34
 from front which a Beech 8 in diam
 bears N 45° W 11 lbs dist also a
 Beech 18 in diam bears N 41° 0' 16" E
 dist Land 2nd rate level and dry

Section 2 North Range 13 East

Timber: W. Oak Sugar Poplar
Lynx & Wildg. th Spice

11.13 Beech 16 in diam
20.00 Run 1/4 the course S.E.
40.00 made 1/2 mile com on a
Beech 10 in diam

8000 Set post 2 in cor of section 2, 3, 34 & 35
from which a Beech 11 in diam bears N
53 & 17 the dist also in E 24 in
bears N 5 11 31 the distant
Land first 1/2 mile good 2nd rate
last 1/2 3rd rate Timber Beech
Sugar W. Oak Poplar B. Oak &
Wildg. th Spice &c.

21.15 W. Oak 18 in diam
30.00 Intersect. Private Claim No 123
from this Set post for cor of each
Section 2 & 35 from which a B. Oak
10 in diam bears N 11 & 11 the dist
also a Lynx 7 in diam bears N 32
& 2 the dist Land dry good 2nd rate
Timber Beech B. Oak Poplar &c.

Surveyed 1815 by Wm. Prescott D.S.

South East Boundary

4000 Set 1/4 Sec post from which an Elm 12 in
diam bears S 15 N 23 the also a Lynx 12 in
bears N 7 11 21 the.

46.50 Run Oak 30 in diam

46.75 Intersect. P. Claim 1720 East of cor of 1/4
Land land and met 2nd rate Timber B. Oak
Beech Lynx Sugar tree &c.

Surveyed by Wm. Prescott 1818