

**LAND CORNER RECORDATION CERTIFICATE**  
**Filing Requirement of Act 74, Mich. P.A. 1970**

For corners in

<u>MACOMB</u> (County)	Located In: <u>CLINTON</u>	Corner Code # <u>E-12</u>
1. Public Land Survey	<u>T 2N R 13E</u>	<u>E-12</u>
	T <u>    </u> R <u>    </u>	<u>    </u>
	T <u>    </u> R <u>    </u>	<u>    </u>
	T <u>    </u> R <u>    </u>	<u>    </u>
2. Property Controlling in Section	S <u>    </u> T <u>    </u> R <u>    </u>	<u>    </u>
	S <u>    </u> T <u>    </u> R <u>    </u>	<u>    </u>
3. Miscellaneous Property in Sec.	S <u>    </u> T <u>    </u> R <u>    </u>	<u>    </u>
	S <u>    </u> T <u>    </u> R <u>    </u>	<u>    </u>
4. Lot No. <u>    </u> , Recorded Plat <u>    </u>		
5. Private Claims <u>    </u>		

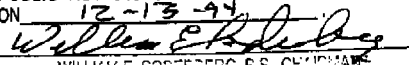
Register of Deeds Stamp & File Number

	A	B	C	D	E	F	G	H	I	J	K	L	M
2	6	6	4				3	2					
3													
4	7	8	8				10	11	12				
5													
6	16	17	18				15	14	13				
7													
8	19	20	21				22	23	24				
9													
10	30	29	28				27	26	25				
11													
12	31	32	33				34	35	36				
13													

I, STEVEN E. DUNN, in a field survey on MARCH 20, 19 94, do hereby certify that under requirements of P.A. 74, Michigan P.A. of 1970, the corner points mentioned in lines 1 and 2 above were in conformance with regulations and rules therefore as required in the current manual of survey instructions of the United States Department of the Interior, Bureau of Land Management or by a decree of a Court of Law and for that the corner points mentioned in lines 3, 4 and 5 above were in conformance with the rules of the Michigan Board of Land Surveyors or by a Decree of a Court of Law; established, re-established, monumented, re-monumented, recovered, found as expressed below:

NOTE: Not more than 4 corners, all in the same town and range, may be recorded on this certificate.

A. Description of original monument and accessories and/or subsequent restoration:  
 GLO POST - NO EVIDENCE OF ORIGINAL CORNER FOUND  
 GLO ORIGINAL SURVEY PERFORMED BY PRESTON 2-18-1818

ACCEPTED BY THE MACOMB COUNTY SURVEY PEER GROUP AS THE OFFICIAL CORNER UNDER MICHIGAN PUBLIC ACT 345 OF 1990 AT A MEETING HELD ON 12-13-94  
  
 WILLIAM E. SOBERSBERG, P.S., CHAIRMAN

B. Description of corner evidence found and/or method applied in restoring or reestablishing corner:

E-12 1/4 CORNER

FOUND 1/2" IRON ROD IN MONUMENT BOX IN CONCRETE PAVEMENT.



FIELD MEASUREMENTS AND RECORDED DISTANCES

E-12 TO E-11 2783.76' (M.) 40.00 (GLO) 2640.00'  
 E-12 TO E-13 2586.80' (M.) 40.00 (GLO) 2640.00'

C. Description of monument for corner and accessories established to perpetuate locating the position of the corner:

E-12 T.2N., R.13E. I REPLACED 1/2" IRON ROD WITH 3/4" x 24" IRON ROD WITH 2" DIAMETER ALUMINUM CAP STAMPED "MACOMB COUNTY MONUMENT MI. ACT 345 #28408" IN AN EXISTING MONUMENT BOX.

WITNESSES

S.75°E. 37.42' FOUND PK NAIL IN NORTHEAST FACE OF UTILITY POLE  
 S.23°W. 94.90' FOUND PK NAIL IN EAST FACE OF UTILITY POLE  
 S.61°W. 85.76' CENTER TOP NUT OF FIRE HYDRANT  
 N.60°W. 76.56' FOUND PK NAIL IN NORTH FACE OF UTILITY POLE

THE SELECTED LOCATION IS ACCEPTED BY ME AND IS GENERALLY ACCEPTED BY PROFESSIONAL SURVEYORS AS THE BEST AVAILABLE EVIDENCE OF THE POSITION OF THE ORIGINAL CORNER.

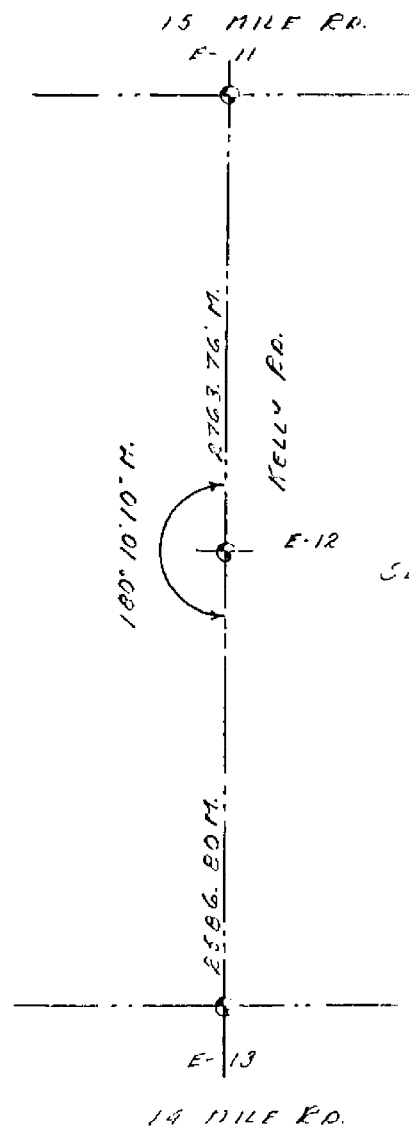
Signed by Steven E. Dunn Date Dec. 20, 1994  
 Surveyor's Michigan License No. 28408



22-141 50 SHEETS  
22-142 100 SHEETS  
22-144 200 SHEETS

SEC. 32

SEC. 33



KELLY RD.

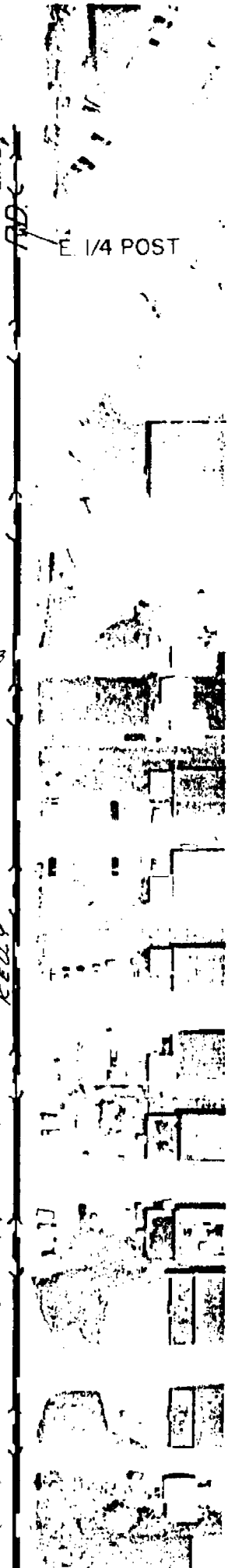
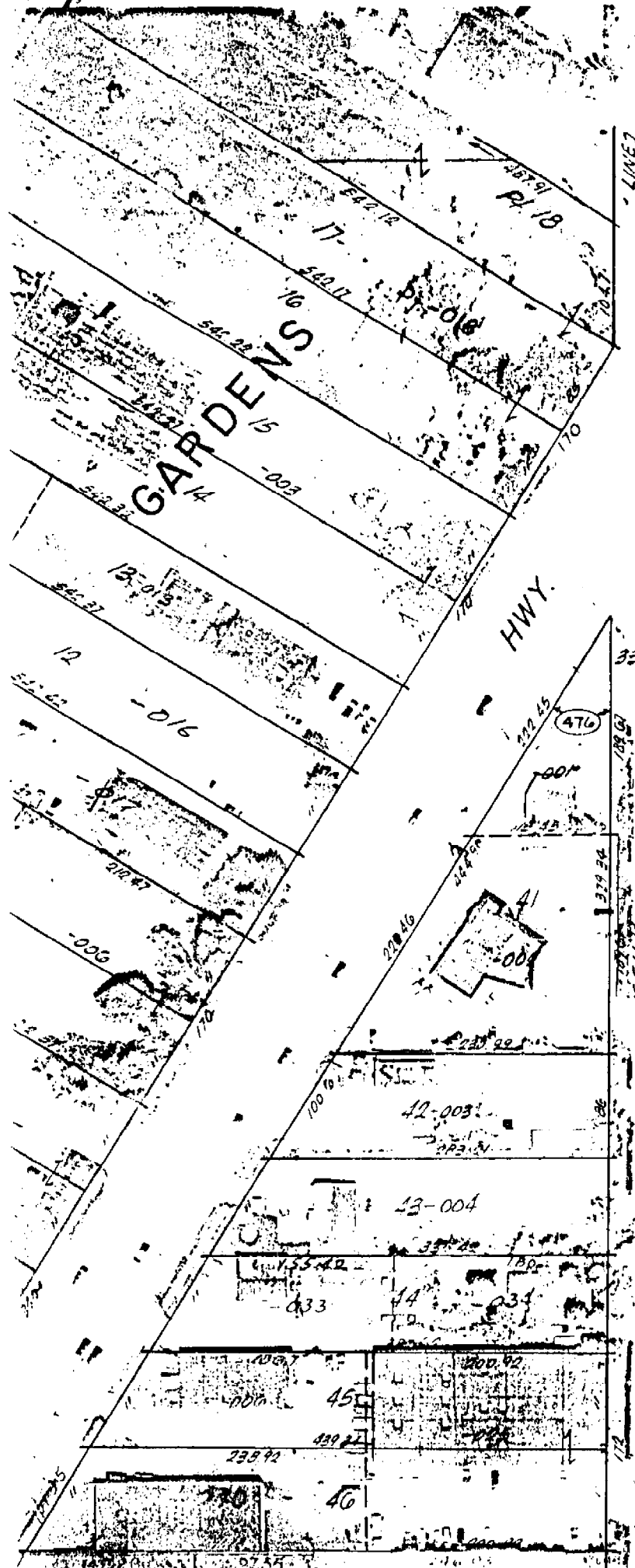
E-13

E-12

E-11

14 MILE RD.

15 MILE RD.



E 1/4 POST

HWY.

476

33

476

379 24

100 10 1

72

97 55

GROESBECK M-970 HWY.

RD.

FEELY

Teske

35.  
-040 578.29

34.1  
616.32

320  
33  
616.51

-041

32  
616.70

31-005  
616.89

30-006  
617.07

29-007  
617.29

28-008  
617.43

27-009  
617.62

26-010  
617.8

25-011  
617.97

24-012  
618.17

23-038  
618.35

22-039  
618.53

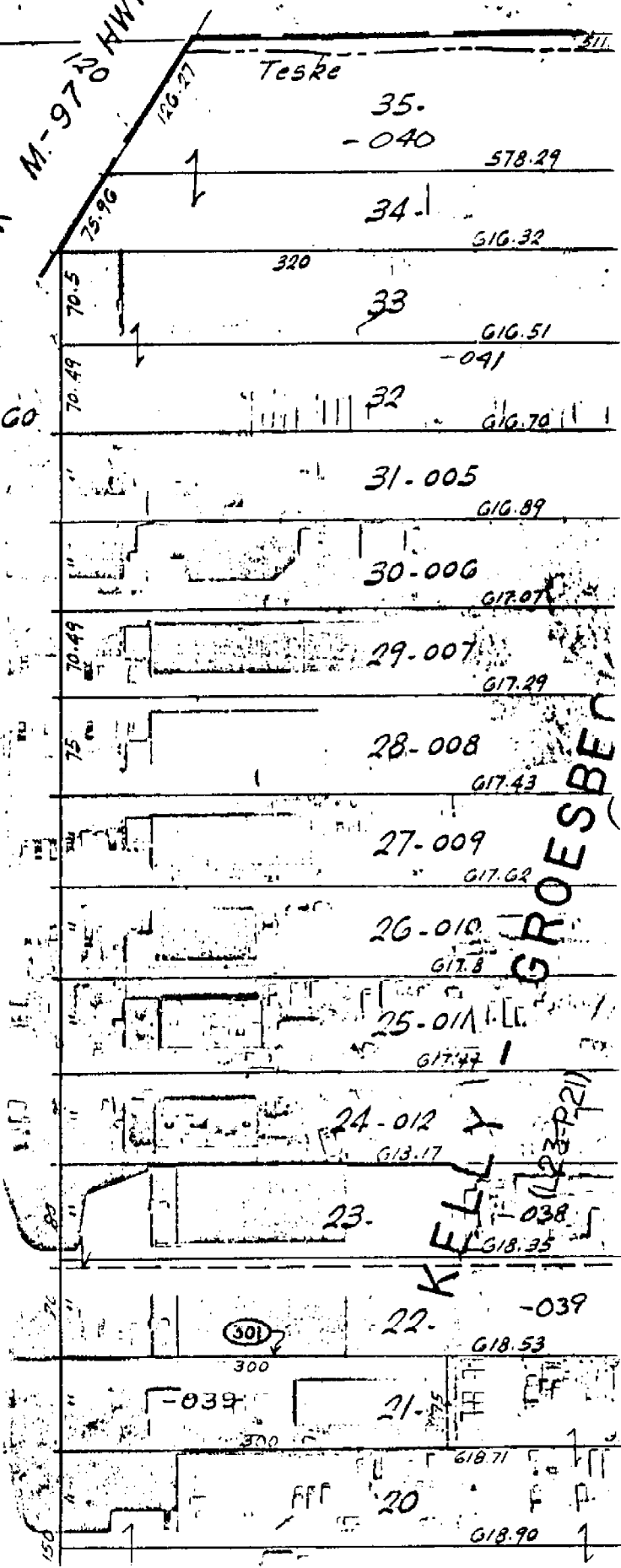
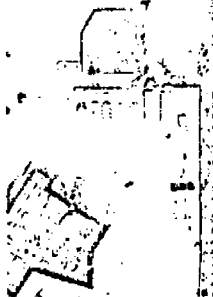
300

-039  
618.71

20  
618.90

GROESBECK

123-221



REV. 7-87  
REV. 5-85  
REV. 4-83  
REV. 10-76  
REV. 4-74

Copyright 1972  
MACOMB COUNTY

SCALE: 1" = 100'

II-33A

