

**LAND CORNER RECORDATION CERTIFICATE**  
 Filing Requirement of Act 74, Mich. P.A. 1970

Form No. 101

<b>MACOMB</b> (County)	Located in: <b>CLINTON</b>	Corner Code #
1. Public Land Survey	<u>T 2N R 13E</u>	<u>D-11</u>
	T <u>    </u> R <u>    </u>	<u>    </u>
	T <u>    </u> R <u>    </u>	<u>    </u>
	T <u>    </u> R <u>    </u>	<u>    </u>
2. Property Controlling in Section	S <u>    </u> T <u>    </u> R <u>    </u>	<u>    </u>
	S <u>    </u> T <u>    </u> R <u>    </u>	<u>    </u>
3. Miscellaneous Property in Sec.	S <u>    </u> T <u>    </u> R <u>    </u>	<u>    </u>
	S <u>    </u> T <u>    </u> R <u>    </u>	<u>    </u>
4. Lot No. <u>    </u> , Recorded Plat <u>    </u>		
5. Private Claims <u>    </u>		

Register of Deeds Stamp & File Number

	A	B	C	D	E	F	G	H	I	J	K	L	M
2	6	6	4	3	2	1							
3													
4	7	8	9	10	11	12							
5													
6	18	17	16	15	14	13							
7													
8	19	20	21	22	23	24							
9													
10	30	29	28	27	26	25							
11													
12	31	32	33	34	35	36							
13													

I, STEVEN E. DUNN, in a field survey on DECEMBER 12, 19 94, do hereby certify that under requirements of P.A. 74, Michigan P.A. of 1970, the corner points mentioned in lines 1 and 2 above were in conformance with regulations and rules therefore as required in the current manual of survey instructions of the United States Department of the Interior, Bureau of Land Management or by a decree of a Court of Law and /or that the corner points mentioned in lines 3, 4 and 5 above were in conformance with the rules of the Michigan Board of Land Surveyors or by a Decree of a Court of Law; established, re-established, monumented, re-monumented, recovered, found as expressed below:

NOTE: Not more than 4 corners, all in the same town and range, may be recorded on this certificate.

A. Description of original monument and accessories and/or subsequent restoration:  
**GLO POST - NO EVIDENCE OF ORIGINAL CORNER FOUND**  
 GLO ORIGINAL SURVEY PERFORMED BY PRESTON 8-18-1818

ACCEPTED BY THE MACOMB COUNTY SURVEY PEER GROUP AS THE OFFICIAL CORNER UNDER MICHIGAN PUBLIC ACT 345 OF 1980 AT A MEETING HELD ON 12-13-94  
*William E. Soeberberg*  
 WILLIAM E. SOEBERBERG, P.S., CHAIRMAN

<u>L.C.R.C.</u>	<u>NAME AND NUMBER</u>	<u>DESCRIPTION</u>	<u>DATE</u>
L. 3004 P. 130	WILLIAM J. COULTER, #14780	FOUND 1/2" STEEL ROD	SEPTEMBER 19, 1978

B. Description of corner evidence found and/or method applied in restoring or reestablishing corner:

D-11 1/4 CORNER  
 FOUND ALUMINUM TAG WITH "SURVEY MARK" STAMPED ON TAG ON "T" IRON IN ASPHALT PAVEMENT. VERIFIED LOCATION BY COMPARING FOUND WITNESS TIE FROM L.C.R.C. AND THE DISTANCE FROM D-11 TO E-11 AS SHOWN ON "BENNETT INDUSTRIAL COMPLEX SUBDIVISION" AS RECORDED IN LIBER 91 OF PLATS ON PAGES 32-33 (M.C.R.).

FOUND WITNESSES  
 L. 3004 P. 130 SOUTH 51.85' PK IN DETROIT EDISON POLE

FIELD MEASUREMENTS AND RECORDED DISTANCES  
 D-11 TO C-11 2698.73' (M.) 39.95' (GLO) 2636.70'  
 D-11 TO E-11 2715.96' (M.) 2716.39' (RECORD FROM PLAT) 39.95' (GLO) 2636.70'



C. Description of monument for corner and accessories established to perpetuate locating the position of the corner  
 D-11 T.2N., R.13E. I REPLACED ALUMINUM TAG WITH 3/4" x 24" IRON ROD WITH 2" DIAMETER ALUMINUM CAP STAMPED "MACOMB COUNTY MONUMENT MI. ACT 345 #28408" IN A NEW MONUMENT BOX.

WITNESSES

S.07°W.	52.04'	FOUND PK NAIL IN WEST FACE OF UTILITY POLE
N.04°E.	99.35'	FOUND PK NAIL IN EAST FACE OF UTILITY POLE
N.58°W.	78.78'	FOUND PK NAIL IN NORTHEAST FACE OF LIGHT POLE
N.80°E.	154.44'	CENTER TOP NUT ON FIRE HYDRANT
SOUTH	104.50'	CENTER TOP NUT ON FIRE HYDRANT

THE SELECTED LOCATION IS ACCEPTED BY ME AND IS GENERALLY ACCEPTED BY PROFESSIONAL SURVEYORS AS THE BEST AVAILABLE EVIDENCE OF THE POSITION OF THE ORIGINAL CORNER.

Signed by Steven E. Dunn Date Dec. 20, 1994  
 Surveyor's Michigan License No. 28408



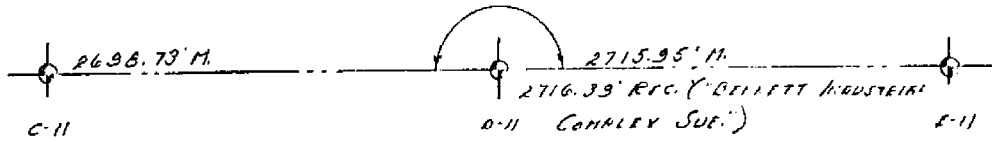


22-141 50 SHEETS  
22-142 100 SHEETS  
22-144 200 SHEETS



SEC. 29

179° 20' 40" N.



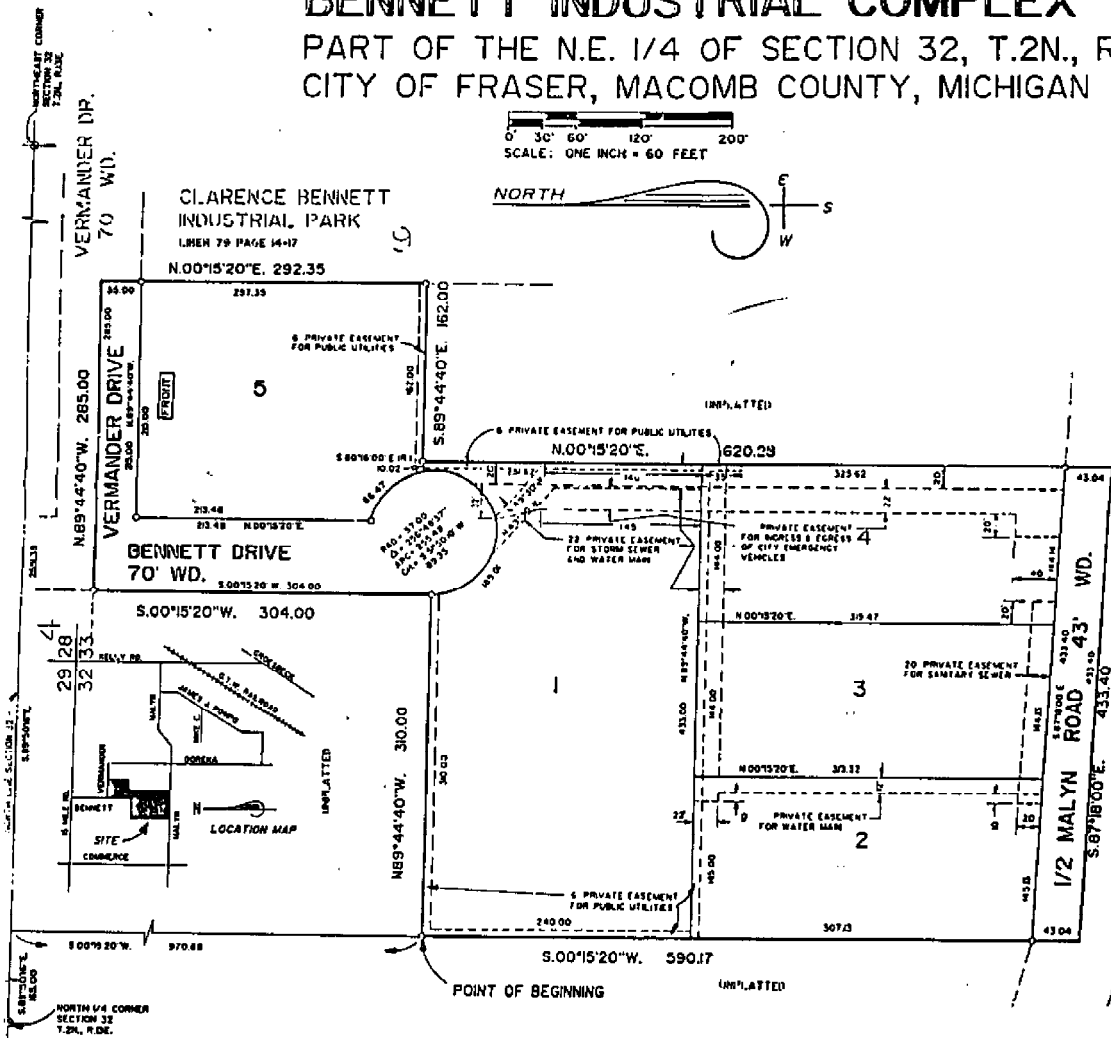
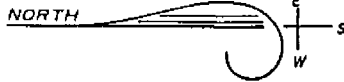
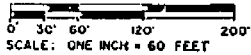
15 MILE RD.

SEC. 32



# BENNETT INDUSTRIAL COMPLEX

PART OF THE N.E. 1/4 OF SECTION 32, T.2N., R.  
CITY OF FRASER, MACOMB COUNTY, MICHIGAN



CLARENCE BENNETT  
INDUSTRIAL PARK  
LINEN 79 PAGE 14-17

N.00°15'20"E. 292.35

5 PRIVATE EASEMENT  
FOR PUBLIC UTILITIES

PROFIT

VERMANDER DRIVE  
70' WD.

N.89°44'40"W. 285.00

VERMANDER DR.

70' WD.

N.89°44'40"W. 285.00

BENNETT DRIVE  
70' WD.

S.00°15'20"W. 304.00

S.00°15'20"W. 304.00

S.00°15'20"W. 304.00

S.00°15'20"W. 304.00

S.00°15'20"W. 304.00

S.00°15'20"W. 304.00

S.00°15'20"W. 304.00

S.00°15'20"W. 304.00

S.00°15'20"W. 304.00

S.00°15'20"W. 304.00

S.00°15'20"W. 304.00

S.00°15'20"W. 304.00

S.00°15'20"W. 304.00

S.00°15'20"W. 304.00

S.00°15'20"W. 304.00

S.00°15'20"W. 304.00

S.00°15'20"W. 304.00

S.00°15'20"W. 304.00

S.00°15'20"W. 304.00

S.00°15'20"W. 304.00

S.00°15'20"W. 304.00

S.00°15'20"W. 304.00

S.00°15'20"W. 304.00

S.00°15'20"W. 304.00

S.00°15'20"W. 304.00

S.00°15'20"W. 304.00

S.00°15'20"W. 304.00

S.00°15'20"W. 304.00

S.00°15'20"W. 304.00

S.00°15'20"W. 304.00

S.00°15'20"W. 304.00

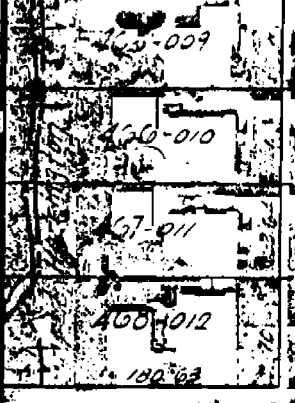
S.00°15'20"W. 304.00

S.00°15'20"W. 304.00

451



CEDARLAWN



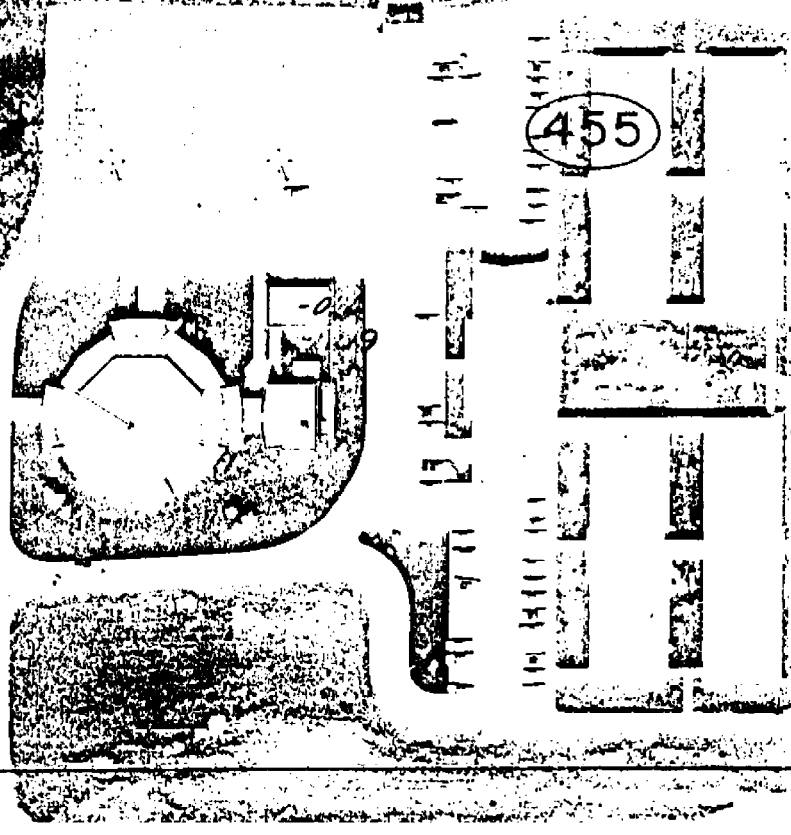
BLAIRMOOR



MAYBURY



455



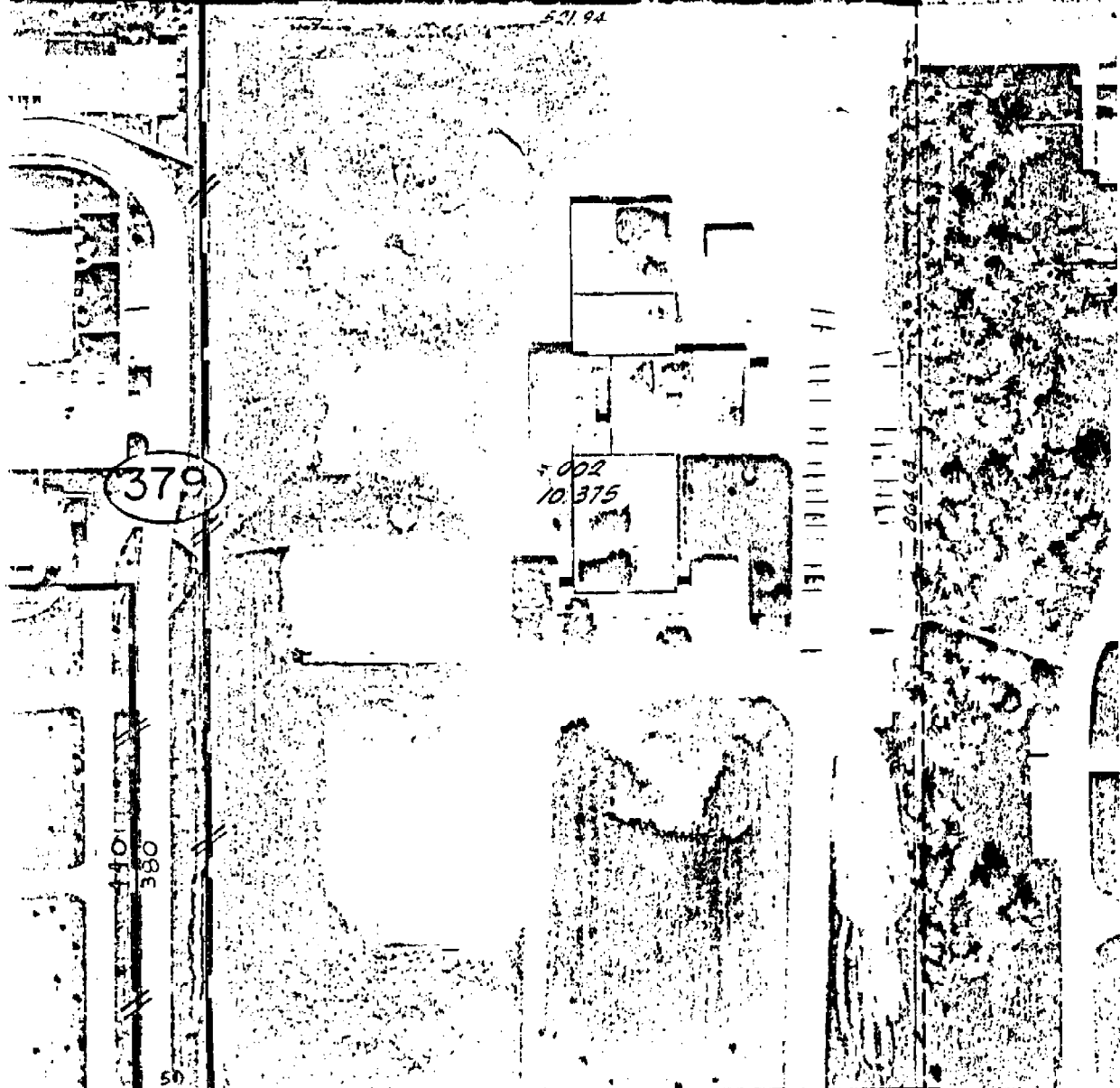
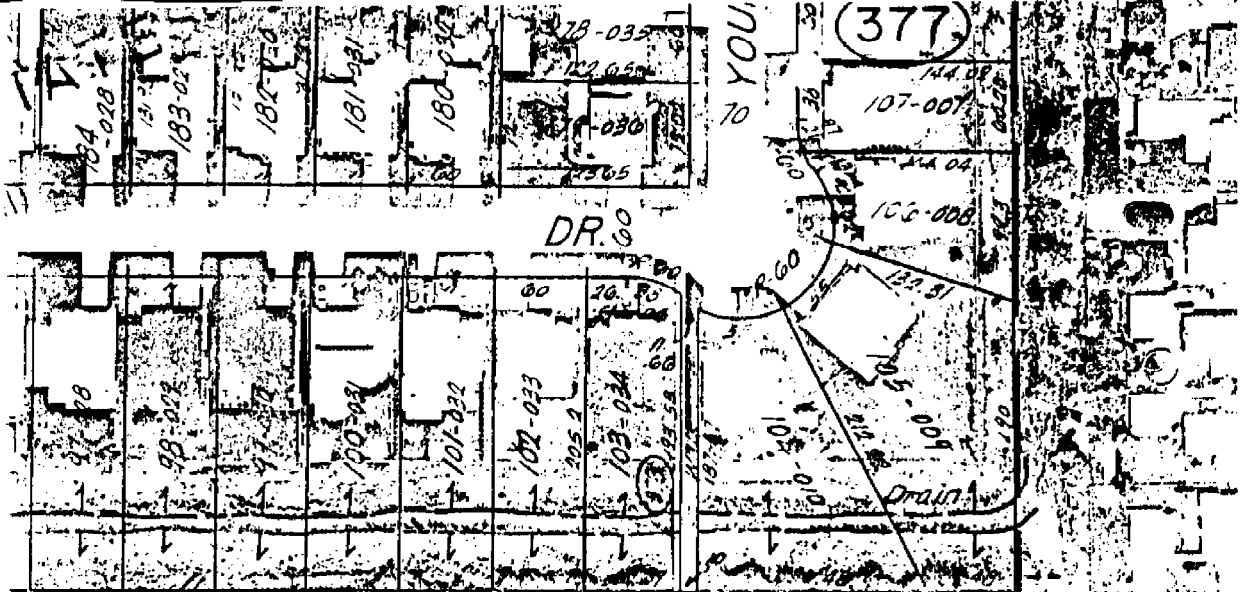
15 MILE

87  
78  
76

072  
COUNTY, MISSOURI

1" = 100'

CLIP



Copyright 1972  
MACOMR COU

32B 15 MILE

N TWP.

20 TON DIZE

N 1/4 POSTS

FRASER

CLARENCE

BENNETT

(202)

(201)

1-005

2-006

3-007

4-004

510

380

-013

2.66

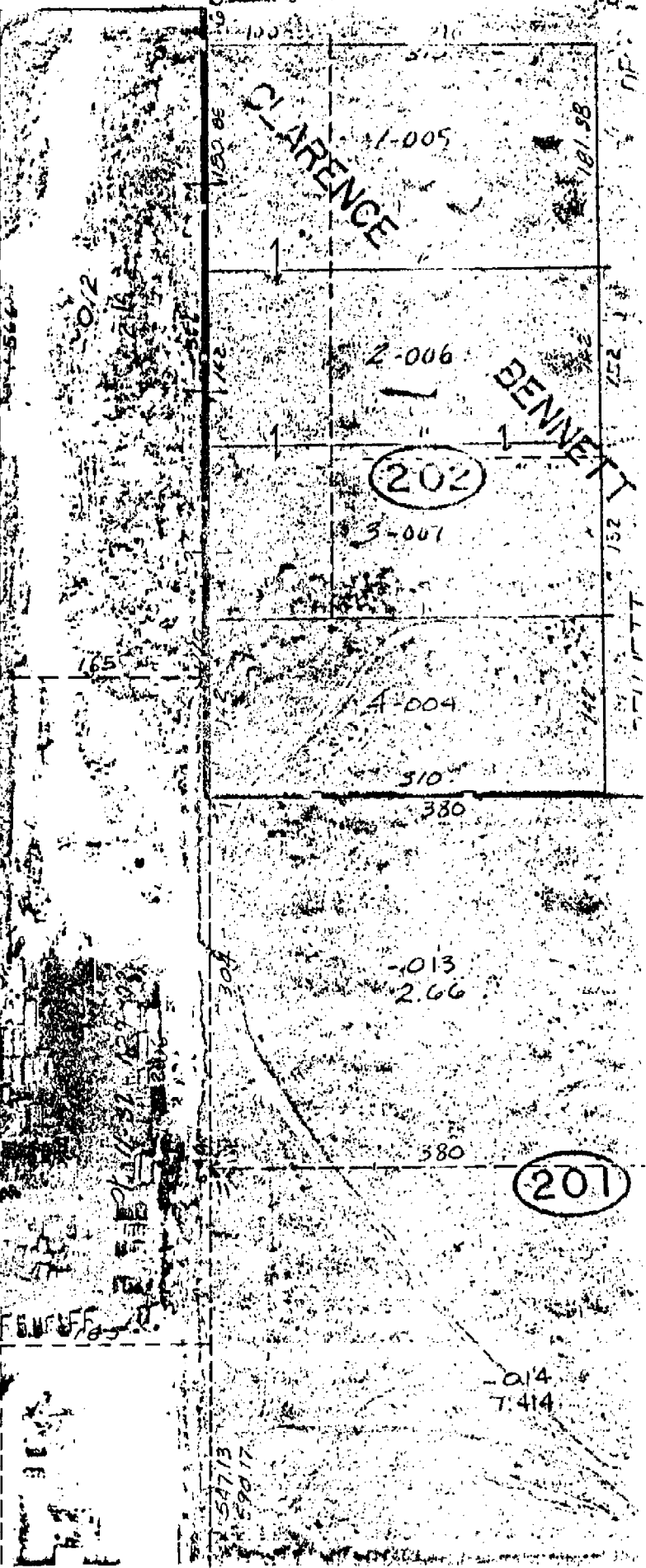
380

-014

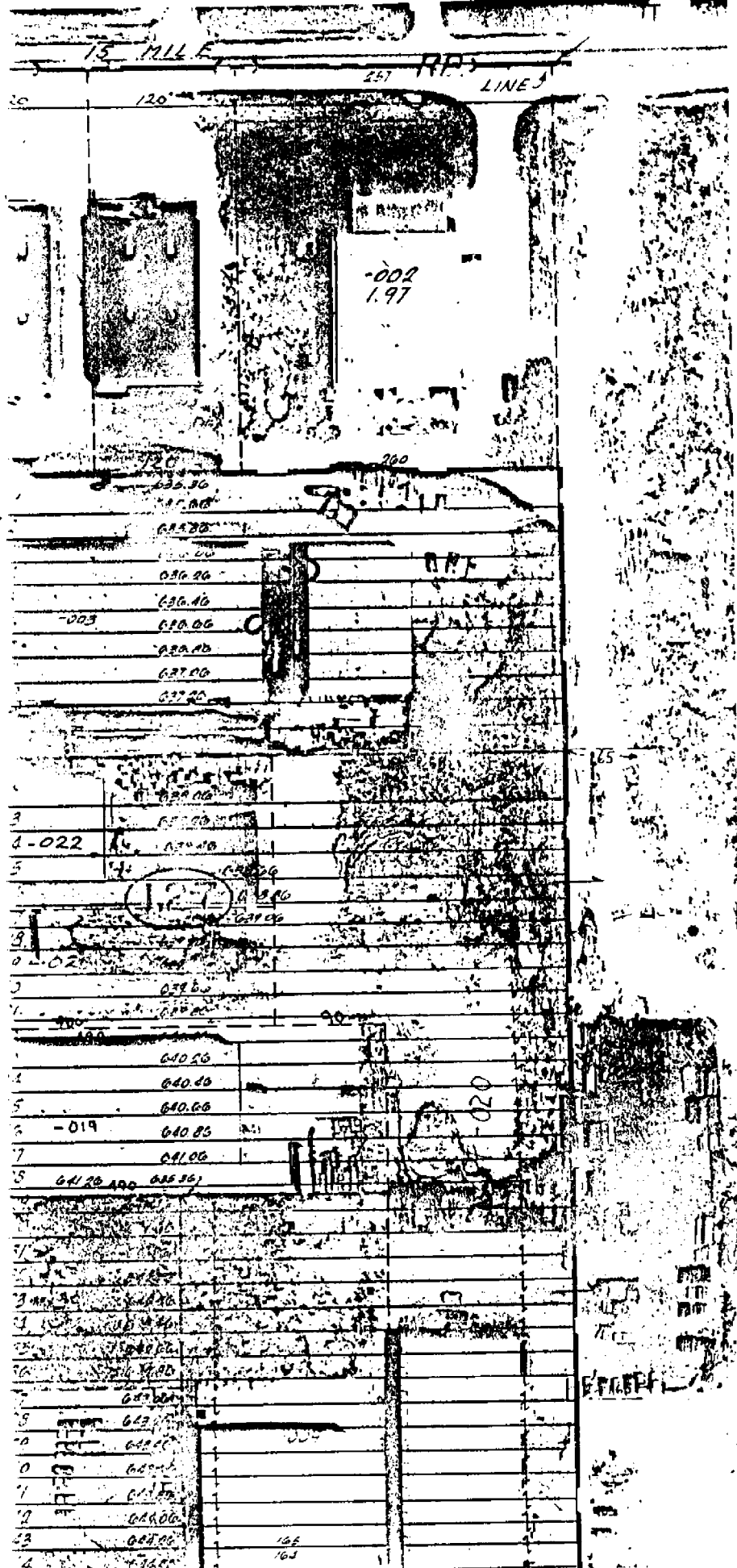
7.414

5713  
5917

1-328







# LAND CORNER RECORDATION CERTIFICATE

FILING REQUIREMENT OF ACT 74, MICH. P.A. 1970

LIBER **3004** PAGE **130**

FOR CORNERS OF—	LOCATED IN—	CORNER CODE NUMBER
1. PUBLIC LAND SURVEY _____	T. <u>2</u> N. R. <u>13</u> <input checked="" type="checkbox"/>	<u>D-11, D-12, D-13</u>
2. PROPERTY CONTROLLING IN SECTION _____	T. _____ N. S. R. _____ E. W. _____	_____
3. MISCELLANEOUS PROPERTY IN SECTION _____	T. _____ N. S. R. _____ E. W. _____	_____
4. LOT NO. _____, RECORDED PLAT _____		
5. PRIVATE CLAIMS _____		

A528593

RECORDED IN MACOMB COUNTY  
RECORDS AT: 1:00 P. M.

SEP 19 1978

*Edna M. Hill*  
CLERK - REGISTER OF DEEDS  
MACOMB COUNTY, MICHIGAN

REGISTER OF DEEDS STAMP AND  
FILING NUMBER

I, William J. Coulter, do hereby certify that under requirements of P.A. 74, Michigan P.A. of 1970, the corner points mentioned in lines 1 and 2 above were, in a field survey on Sept. 11, 1978, established, re-established, monumented, re-monumented, recovered or restored as expressed below and in conformance with regulations and rules therefore as required in the current manual of survey instructions of the United States Department of the Interior, Bureau of Land Management or by a decree of a court of law. Furthermore, that the corner points mentioned in lines 3, 4 and 5 above were, in a field survey on \_\_\_\_\_, 19\_\_\_\_, found, recovered, restored, established or re-established as expressed below and in conformance with the rules of the Michigan State Board of Registration for Land Surveyors or, by a Decree of a Court of law:

A. Description of original monument and accessories and/or subsequent restoration:

B. Description of corner evidence found and/or method applied in restoring or re-establishing corner:

- D-11 1/2" Steel rod found in center of Asphalt pavement
- D-12 4" diam. steel corner fence post, 8' high
- D-13 1/2" steel rod found in center of Asphalt pavement.

C. Description of monument for corner and accessories established to perpetuate locating the position of the corner:

- D-11 N.E. 94.30' P.K. in Light pole - North 60.00' survey iron - South 60.00' Conc. N.N.W. 34.40' Steel corner fence Post - South 51.95' P.K. in D.E. Pole \*
- D-12 South-8' steel fence on N-S 1/4 line - East -8' Steel fence on E-W 1/4 line East 6.0' South end of 6' Conc. Wall
- D-13 S.W. 67.58' M.C.R.C. Nail in D.E. Pole - North 33.02' P.K. in D.E. Pole E.N.E. 125.90' P.K. in D.E. Pole.

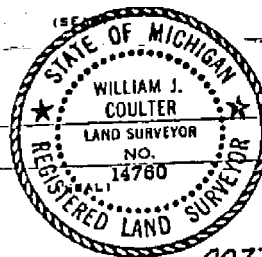
SIGNED BY William J. Coulter DATE Sept 19, 1978

SURVEYOR'S MICHIGAN REGISTRATION NO. 14760

FOR STATE AND UNITED STATES AGENCIES:

SIGNED BY \_\_\_\_\_ DATE \_\_\_\_\_  
CHIEF OF SURVEY PARTY

APPROVED AND SIGNED BY \_\_\_\_\_ DATE \_\_\_\_\_  
MICHIGAN REGISTERED LAND SURVEYOR



0077.

SURVEYOR'S MICHIGAN REGISTRATION NO. \_\_\_\_\_

*208 FILE*