

LAND CORNER RECORDATION CERTIFICATE
Filing Requirement of Act 74, Mich. P.A. 1970

For corners in

<u>MACOMB</u> (County)	Located in: CLINTON	Corner Code # C-11
1. Public Land Survey	T <u>2N</u> R <u>13E</u>	_____
	T _____ R _____	_____
	T _____ R _____	_____
	T _____ R _____	_____
2. Property Controlling in Section	S _____ T _____ R _____	_____
	S _____ T _____ R _____	_____
3. Miscellaneous Property in Sec.	S _____ T _____ R _____	_____
	S _____ T _____ R _____	_____
4. Lot No. _____, Recorded Plat _____		
5. Private Claims _____		

Register of Deeds Stamp & File Number

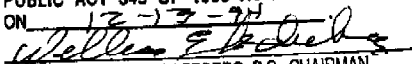
I, STEVEN E. DUNN, in a field survey on APRIL 15, 1994, do hereby certify that under requirements of P.A. 74, Michigan P.A. of 1970, the corner points mentioned in lines 1 and 2 above were in conformance with regulations and rules therefore as required in the current manual of survey instructions of the United States Department of the Interior, Bureau of Land Management or by a decree of a Court of Law and/or that the corner points mentioned in lines 3, 4 and 5 above were in conformance with the rules of the Michigan Board of Land Surveyors or by a Decree of a Court of Law; established, re-established, monumented, re-monumented, recovered, found as expressed below:

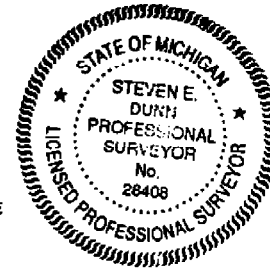
NOTE: Not more than 4 corners, all in the same town and range, may be recorded on this certificate.

A. Description of original monument and accessories and/or subsequent restoration:
 GLO POST - NO EVIDENCE OF ORIGINAL CORNER FOUND
 GLO ORIGINAL SURVEY PERFORMED BY PRESTON 2-18-1818

CERTIFICATE OF SURVEY

L. 3189 P. 3	ROBERT L. SMITH, #18052	OCTOBER 13, 1979	
<u>L.C.R.C.</u>			
L. 2879 P. 823	JOHN J. MCMAHON, #4018	FOUND MONUMENT BOX	NOVEMBER 15, 1977
L. 3020 P. 438	TREVOR N. PARISH, #24809	FOUND MONUMENT BOX	OCTOBER 23, 1978
L. 3081 P. 922	JOHN J. MCMAHON, #4018	FOUND 1/2" IRON BAR IN MONUMENT BOX	MARCH 26, 1979
L. 3579 P. 143	HERBERT J. KOSS, #14097	FOUND 5/8" IRON BAR IN MONUMENT BOX	JANUARY 3, 1984
L. 4723 P. 616	RAYMOND J. DONNELLY, #21563	FOUND 5/8" IRON ROD IN MONUMENT BOX	SEPTEMBER 15, 1989
L. 5107 P. 566	JOHN R. FENN, #23505	FOUND 5/8" IRON IN MONUMENT BOX	MAY 22, 1991

ACCEPTED BY THE MACOMB COUNTY SURVEY PEER GROUP AS THE OFFICIAL CORNER UNDER MICHIGAN PUBLIC ACT 345 OF 1990 AT A MEETING HELD ON 12-13-94

 WILLIAM E. SODERBERG, P.S., CHAIRMAN



SEE SHEET 2 OF 2

B. Description of corner evidence found and/or method applied in restoring or reestablishing corner:
 C-11 SECTION CORNER

FOUND 5/8" IRON ROD IN MONUMENT BOX IN CONCRETE PAVEMENT
 VERIFIED LOCATION BY COMPARING FOUND WITNESSES OF L.C.R.C.'S AS LISTED BELOW:

FOUND WITNESSES

L. 2879 P. 823	N.45°W. 82.20'	TOP BOLT ON FIRE HYDRANT
	S.45°W. 82.60'	TOP BOLT ON FIRE HYDRANT
L. 3020 P. 438	N.45°W. 82.20'	TOP BOLT ON FIRE HYDRANT
	S.45°W. 82.80'	TOP BOLT ON FIRE HYDRANT
L. 3081 P. 922	N.49°E. 53.40'	NAIL AND WASHER IN WOOD POLE
L. 3579 P. 143	NE 41.82'	CHISELED CROSS ON SOUTHWEST RIM OF MANHOLE
	SOUTH 16.45'	CHISELED CROSS ON NORTH RIM OF MANHOLE
	SW 82.75'	TOP CENTER OF FIRE HYDRANT
	NW 82.42'	TOP CENTER OF FIRE HYDRANT

SEE SHEET 2 OF 2

C. Description of monument for corner and accessories established to perpetuate locating the position of the corner:

C-11 T.2N., R.13E. I REPLACED 5/8" IRON ROD WITH 3/4" x 24" IRON ROD WITH 2" DIAMETER ALUMINUM CAP STAMPED "MACOMB COUNTY MONUMENT MI. ACT 345 #28408" IN AN EXISTING MONUMENT BOX.

WITNESSES

S.04°W. 16.38'	FOUND SCRIBED " + " ON SOUTHWEST RIM OF MANHOLE
S.52°E 92.86'	FOUND PK NAIL WITH TAG #21563 IN NORTHEAST FACE OF UTILITY POLE
N.58°W. 82.32'	CENTER TOP NUT OF FIRE HYDRANT
S.54°W. 62.88'	CENTER TOP NUT OF FIRE HYDRANT
N.48°E. 53.50'	FOUND PK NAIL AND WASHER IN NORTHWEST FACE OF UTILITY POLE
S.50°W. 73.35'	FOUND PK NAIL WITH TAG #21563 IN NORTHWEST FACE OF UTILITY POLE

THE SELECTED LOCATION IS ACCEPTED BY ME AND IS GENERALLY ACCEPTED BY PROFESSIONAL SURVEYORS AS THE BEST AVAILABLE EVIDENCE OF THE POSITION OF THE ORIGINAL CORNER.

Signed by Steven E. Dunn Date Dec. 20, 1994
 Surveyor's Michigan License No. 28408

A. Description of original monument and accessories and/or subsequent restoration:

M.C.R.C. WITNESS CARDS (UNRECORDED)

NO NAME	1" SOLID IRON	JANUARY 4, 1930
NO NAME	MONUMENT BOX	1969

B. Description of corner evidence found and/or method applied in restoring or reestablishing corner:

FOUND WITNESSES

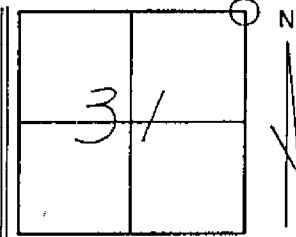
L. 4723 P. 615	AZ. 123°	92.89'	SET PK NAIL AND TAG IN NORTHEAST FACE OF UTILITY POLE
	AZ. 224°	73.59'	SET PK NAIL AND TAG IN NORTHWEST FACE OF UTILITY POLE
	AZ. 297°	82.34'	CENTERLINE OF TOP BOLT ON HYDRANT
L. 5107 P. 556	AZ. 43°	53.58'	FOUND NAIL AND TAG IN NORTHWEST FACE OF UTILITY POLE
	SW	73.44'	PK WITH TAG #21563 ON NORTHWEST FACE OF UTILITY POLE
	SE	92.91'	PK WITH TAG #21563 ON NORTHEAST FACE OF UTILITY POLE
	SW	62.68'	TOP OF HYDRANT
	NW	82.31'	TOP OF HYDRANT

FIELD MEASUREMENTS AND RECORDED DISTANCES

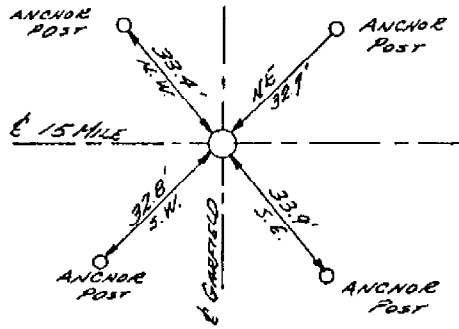
C-11 TO B-11	2712.72' (M.)	38.96 (GLO)	2636.70'
C-11 TO D-11	2698.73' (M.)	39.96 (GLO)	2636.70'
C-11 TO C-12	2648.98' (M.)	40.00 (GLO)	2640.00'

T. 2 N. R. 13 E. CLINTON SEC. NO. 31 FILE NO. 141

MONUMENT WITNESSES RECORD



DESCRIPTION MONUMENT BOX



C-11

MACOMB COUNTY ROAD COMMISSION

SURVEY CHIEF

DATE

1959

Road File No. A-8

141

File Point No. <u>5</u>	Date Filed <u>Jan 4th</u>	19 <u>50</u>
Assessment District No. <u>1089</u>	Station No. <u>74+63</u>	
Township <u>Clinton</u>	Section Corner <u>NE Cor 31</u>	
Type of Surface <u>Concrete</u>	Width <u>20'</u>	
Description of Monument <u>1" Solid Iron</u>		
Monument in Relation to Center Line of Pavement <u>on E</u>		

C-11

WITNESSES:

1. NE to SW Cor East Headwail 38.5
2. NW " SE " West " 38.45
3. SW " Spike in Ed Pole 60.95
4. _____

40

22-141 50 SHEETS
22-142 100 SHEETS
22-144 200 SHEETS
AMPS

SEC. 30

SEC. 29

15 MILE RD.

B-11

C-11

D-11

2712.72 M.

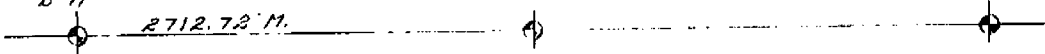
SEC. 31

SEC. 32

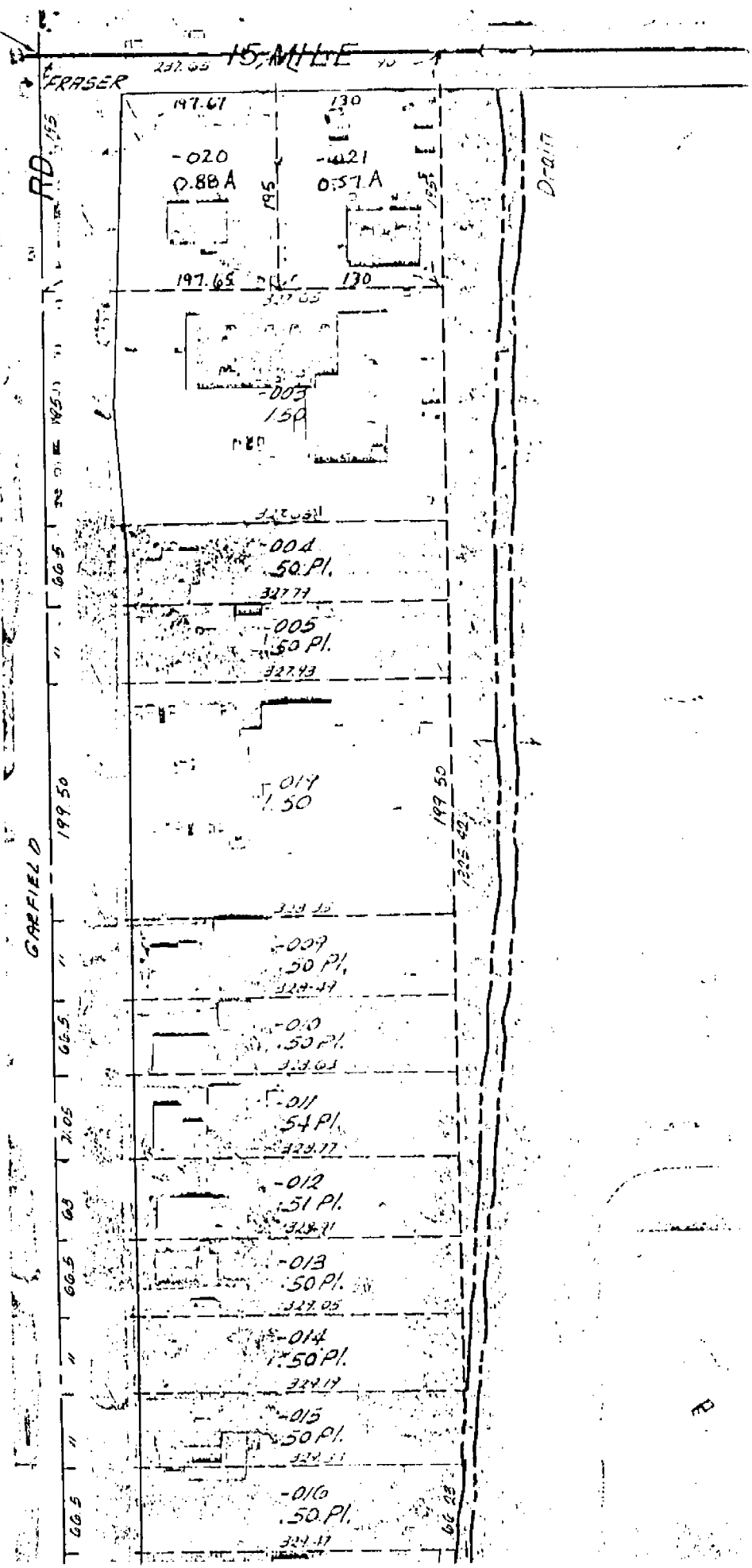
N

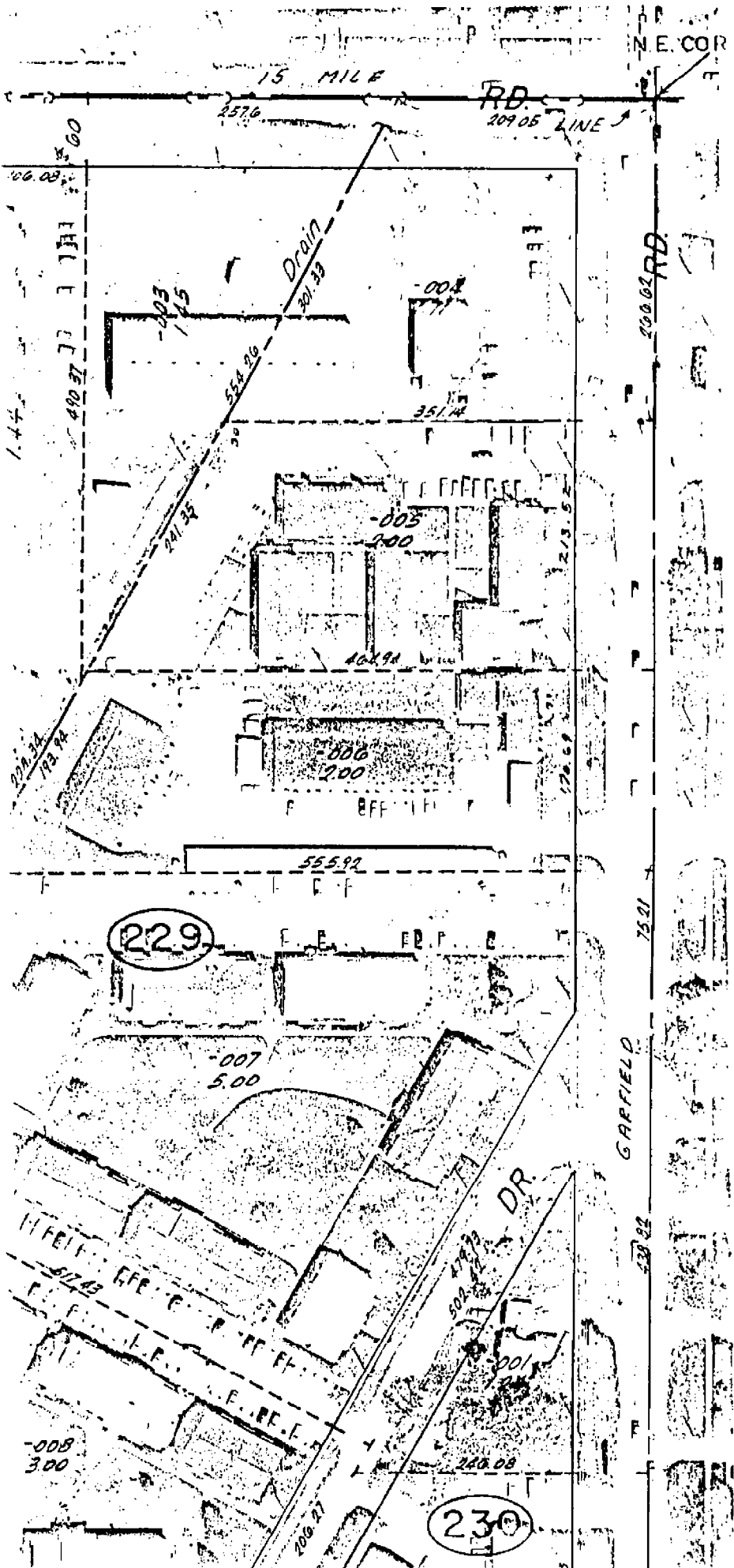
2592.35 M.
SPEFIELD RD.

C-12



N.W. COR.





"A"
 KLEIN SUB. NO 1
 (110 PG 7)

LAND CORNER RECORDATION CERTIFICATE
Filing Requirement of Act 74, Mich. P.A. 1970

RECORDED IN MACOMB COUNTY
RECORDS AT: 10-27A

MAY 22 1991

Edna Hill

CLERK - REGISTER OF DEEDS
MACOMB COUNTY, MICHIGAN

Register of Deeds Stamp & File Number

For corners in
Macomb County
(County)

Located In: Corner Code: //

- 1. Public Land Survey T 2N R 13E C-10, C-11
T ___ R ___
T ___ R ___
T ___ R ___
- 2. Property Controlling S ___ T ___ R ___
in Section 30 S ___ T ___ R ___
- 3. Miscellaneous S ___ T ___ R ___
Property in Sec. S ___ T ___ R ___

- 4. Lot No. _____, Recorded Plat _____
- 5. Private Claims _____

I, John R. Fenn, in a field survey on May 14, 1991, do hereby certify that under requirements of P.A. 74, Michigan P.A. of 1970, the corner points mentioned in lines 1 and 2 above were in conformance with regulations and rules therefore as required in the current manual of survey instructions of the United States Department of the Interior, Bureau of Land Management or by a decree of a Court of Law and/or that the corner points mentioned in lines 3, 4 and 5 above were in conformance with the rules of the Michigan Board of Land Surveyors or by a Decree of a Court of Law; established, re-established, monumented, re-monumented, recovered, found as expressed below:

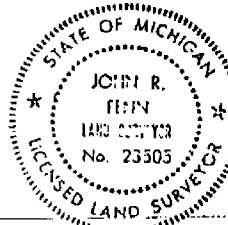
NOTE: Not more than 4 corners, all in the same town and range, may be recorded on this certificate.

	A	B	C	D	E	F	G	H	I	J	K	L
2	6	5	4	3	2	1						
3												
4	7	6	5	4	3	2	1					
5												
6	16	15	14	13	12	11	10	9	8	7	6	5
7												
8	19	18	17	16	15	14	13	12	11	10	9	8
9												
10	20	19	18	17	16	15	14	13	12	11	10	9
11												
12	21	20	19	18	17	16	15	14	13	12	11	10
13												

A. Description of original monument and accessories and/or subsequent restoration:

- B. Description of corner evidence found and/or method applied in restoring or reestablishing corner
 - C-10 Set P.K. Nail Using Monuments in the Barington Manor Subdivision as recorded in Liber 65, Page 10 of Plats
 - C-11 5/8" Iron in Monument Box

- C. Description of monument for corner and accessories established to perpetuate locating the position of the corner:
 - C-10 P.K. Nail 49.23 West to P.K. on S. Face U.P.
122.58 N.N.W. to Chisled "X" on Top of Hydrant.
107.40 N.E. to P.K. in N.W. Face of 14" Tree in Front of House #36100 Garfi
81.51 S.E. to P.K. in N.E. Face of 16" Tree in Front of House #36032 Garfi
 - C-11 5/8" Iron in Mon. Box
 - ✓73.44 S.W. to P.K. w/Tag #21563 on N.W. Face of U.P. ✓
 - ✓92.91 S.E. to P.K. w/Tag #21563 on N.E. Face of U.P. ✓
 - ✓62.68 S.W. to Top of Hydrant *
 - ✓82.31 N.W. to Top of Hydrant *



Signed by John R. Fenn Date May 20, 1991
Surveyor's Michigan License No. #23505

LIBER 04723 PG 615

B394304

LAND CORNER RECORDATION CERTIFICATE
Filing Requirement of Act 74, Mich. P.A. 1970

RECORDED IN MACOMB COUNTY
RECORDS AT: 9:50A M.

SEP 15 1989

Edna M. ...
CLERK - REGISTER OF DEEDS
MACOMB COUNTY, MICHIGAN

Register of Deeds Stamp & File Number

Corners in
Macomb

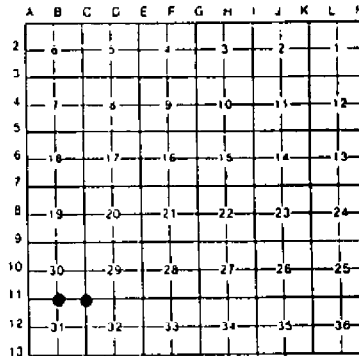
Public Land Survey
T 2N R 13E B-11
T 2N R 13E C-11
T R
T R

Property Controlling
S T R
in Section S T R
Miscellaneous S T R
Property in Sec. S T R

Lot No. Recorded Plat
Private Claims

Raymond J. Donnelly in a field survey on January 19 87
hereby certify that under requirements of P.A. 74, Michigan P.A. of 1970, the corner points mentioned
lines 1 and 2 above were in conformance with regulations and rules therefore as required in the
current manual of survey instructions of the United States Department of the Interior, Bureau of Land
Management or by a decree of a Court of Law and/or that the corner points mentioned in lines 3, 4 and 5
above were in conformance with the rules of the Michigan Board of Land Surveyors or by a Decree of a
Court of Law; established, re-established, monumented, re-monumented, recovered, found as
expressed below:

**NOTE: Not more than 4 corners, all in the same town and range, may be recorded
on this certificate.**



Clinton Twp.

Description of original monument and accessories and/or subsequent restoration

- R-11 Unknown
- C-11 Unknown

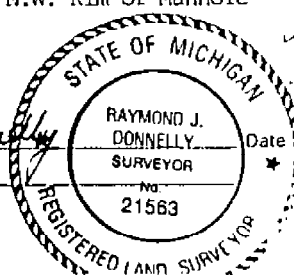
Description of corner evidence found and/or method applied in restoring or reestablishing corner

- R-11 N 1/4 Corner
Found "T" iron in monument box
- C-11 NE Corner
Found 5/8" iron rod in monument box

Description of monument for corner and accessories established to perpetuate locating the position of the corner:

- R-11 Witnesses to the North 1/4 corner of Sec. 31
Found "T" iron in Monument box
AZ. 55 , 50.22', P.K. Nail in N.W. Face of U. Pole
AZ. 140 , 46.13', P.K. Nail in N.E. Face of U. Pole
AZ. 210 , 36.62', Set "X" in North Rim of Manhole
AZ. 250 , 90.05', Found "X" in N.W. Rim of Manhole
- C-11 Witnesses to the N.E. Corner of Sec. 31
Found 5/8" Iron Rod in Mon. Box
AZ. 123 , 92.89', set P.K. Nail & Tag
in N.E. Face of U. Pole *
AZ. 224 , 73.59', Set P.K. Nail & Tag
in N.W. Face of U. Pole *
AZ. 297 , 82.34', Centerline of Top Bol
on Hydrant *
AZ. 43 , 53.58', Found Nail & Tag in
N.W. Face of U. Pole *

Signed by *Raymond J. Donnelly* Date *Sept. 5, 1989*
Surveyor's Michigan License No. 21563



LAND CORNER RECORDATION CERTIFICATE

FILING REQUIREMENT OF ACT 74, MICH. P.A. 1970

LIBER 3579 PAGE 143

FOR CORNERS OF--	LOCATED IN--	CORNER CODE NUMBER
1. PUBLIC LAND SURVEY _____	T. <u>2</u> N. <u>13</u> E. <u>XX</u> X. R. <u>XX</u>	(B-11) (C-11)
2. PROPERTY CONTROLLING IN SECTION <u>31</u>	T. <u>2</u> N. <u>13</u> E. <u>*</u> X. R. <u>*</u>	Clinton Township
3. MISCELLANEOUS PROPERTY IN SECTION _____	T. _____ N. _____ E. _____ S. R. <u>1</u> W. _____	_____
4. LOT NO. _____, RECORDED PLAT _____		
5. PRIVATE CLAIMS _____		

A838456

RECORDED IN MACOMB COUNTY
RECORDS AT: 9:56 A.M.
JAN - 3 1984

Herbert J. Kobs

CLERK - REGISTER OF DEEDS
MACOMB COUNTY, MICHIGAN
REGISTER OF DEEDS STAMP AND
FILING NUMBER

I, Herbert J. Kobs, do hereby certify that under requirements of P.A. 74, Michigan P.A. of 1970, the corner points mentioned in lines 1 and 2 above were, in a field survey on Oct. 10, 1983, established, re-established, monumented, re-monumented, recovered or restored as expressed below and in conformance with regulations and rules therefore as required in the current manual of survey instructions of the United States Department of the Interior, Bureau of Land Management or by a decree of a court of law. Furthermore, that the corner points mentioned in lines 3, 4 and 5 above were, in a field survey on _____, 19____, found, recovered, restored, established or re-established as expressed below and in conformance with the rules of the Michigan State Board of Registration for Land Surveyors or, by a Decree of a Court of law:

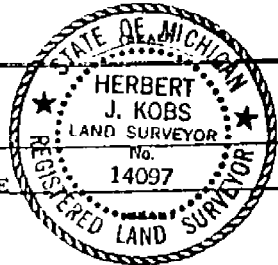
- A. Description of original monument and accessories and/or subsequent restoration:
- B. Description of corner evidence found and/or method applied in restoring or re-establishing corner:
- (B-11) Found T-iron in monument box.
- (C-11) Found 5/8" iron bar in monument box.
- C. Description of monument for corner and accessories established to perpetuate locating the position of the corner:

(B-11)(T-iron in monument box)
P.K. nail & M.C.R.C. tag in power pole - N.E. - 50.41'
Top center of fire hydrant - S.E. - 61.17'
Chisled cross N.E. edge of Manhole rim - S.W. - 39.11'
S.E. bolt of flood light pole base - N.W. - 91.20'

(C-11) (5/8" iron bar in monument box)
Chisled cross S.W. rim of manhole - N.E. - 41.82' *
Chisled cross N. rim of manhole - South - 16.45' *
Top center of fire hydrant - S.W. - 62.75' *
Top center of fire hydrant - N.W. - 82.42' *

SIGNED BY Herbert J. Kobs DATE December 28, 1983
SURVEYOR'S MICHIGAN REGISTRATION NO. 14097

FOR STATE AND UNITED STATES AGENCIES:
SIGNED BY _____ DATE _____
APPROVED AND SIGNED BY _____ DATE _____
CHIEF OF SURVEY PARTY
MICHIGAN REGISTERED LAND SURVEYOR



SURVEYOR'S MICHIGAN REGISTRATION NO. _____ 01123

LAND CORNER RECORDATION CERTIFICATE

FILING REQUIREMENT OF ACT 74, MICH. P.A. 1970

A570613

FOR CORNERS OF -:	LOCATED IN -:	CORNER CODE NUMBER
1. PUBLIC LAND SURVEY _____	T. 2 S., R. 13 W.	C-11, C-12
2. PROPERTY CONTROLLING IN SECTION _____	N. S., R. E. W.	
3. MISCELLANEOUS PROPERTY IN SECTION _____	N. S., R. E. W.	
4. LOT NO. _____, RECORDED PLAT _____		
5. PRIVATE CLAIMS _____		

RECORDED IN MACOMB COUNTY RECORDS AT: 2:30 P.M.

MAR 26 1979

Edna M. White
CLERK - REGISTER OF DEEDS
MACOMB COUNTY, MICHIGAN

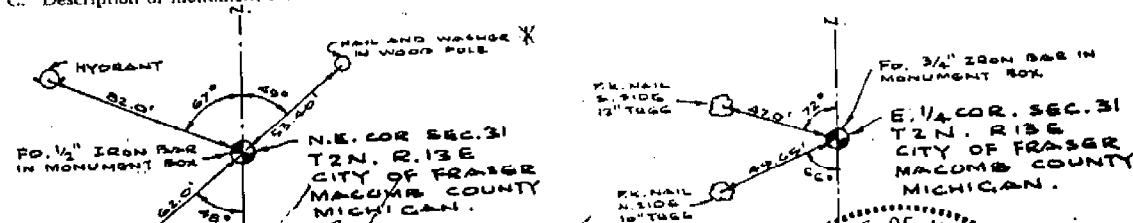
REGISTER OF DEEDS STAMP AND FILING NUMBER

I, John J. McMahon, do hereby certify that under requirements of P.A. 74, Michigan P.A. of 1970, the corner points mentioned in lines 1 and 2 above were, in a field survey on March 14, 1979, established, re-established, monumented, re-monumented, recovered or restored as expressed below and in conformance with regulations and rules therefore as required in the current manual of survey instructions of the United States Department of the Interior, Bureau of Land Management or by a decree of a court of law. Furthermore, that the corner points mentioned in lines 3, 4 and 5 above were, in a field survey on March 14, 1979, found, recovered, restored, established or re-established as expressed below and in conformance with the rules of the Michigan State Board of Registration for Land Surveyors or, by a Decree of a Court of law:

A. Description of original monument and accessories and/or subsequent restoration:

B. Description of corner evidence found and/or method applied in restoring or re-establishing corner:

C. Description of monument for corner and accessories established to perpetuate locating the position of the corner:



SIGNED BY: *[Signature]*

SURVEYOR'S MICHIGAN REGISTRATION NO. # 4018

FOR STATE AND UNITED STATES AGENCIES:

SIGNED BY: _____

APPROVED AND SIGNED BY: *[Signature]*
MICHIGAN REGISTERED LAND SURVEYOR

SURVEYOR'S MICHIGAN REGISTRATION NO. 4018

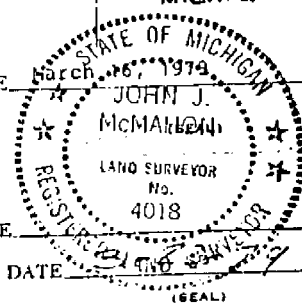
DATE: March 26, 1979

JOHN J. McMAHON

LAND SURVEYOR No. 4018

DATE: _____

DATE: _____



00876

LAND CORNER RECORDATION CERTIFICATE
FILING REQUIREMENT OF ACT 74, MICH. P.A. 1970

FOR CORNERS OF--	LOCATED IN--	CORNER CODE NUMBER
1. PUBLIC LAND SURVEY	T. 2 S., R. 13 W.	C-11, C-12
2. PROPERTY CONTROLLING IN SECTION	N. S., R. E. W.	
3. MISCELLANEOUS PROPERTY IN SECTION	N. S., R. E. W.	
4. LOT NO.	RECORDED PLAT	
5. PRIVATE CLAIMS		

A537166
 RECORDED IN MACOMB COUNTY
 RECORDS AT: 1:00 P. M.
 OCT 23 1978
Edna M. Hill
 CLERK - REGISTER OF DEEDS
 MACOMB COUNTY, MICHIGAN
 REGISTER OF DEEDS STAMP AND
 FILING NUMBER

I, TREVOR N. BARISH, do hereby certify that under requirements of P.A. 74, Michigan P.A. of 1970, the corner points mentioned in lines 1 and 2 above were, in a field survey on DEC. 19, 1972, established, re-established, monumented, re-monumented, recovered or restored as expressed below and in conformance with regulations and rules therefore as required in the current manual of survey instructions of the United States Department of the Interior, Bureau of Land Management or by a decree of a court of law. Furthermore, that the corner points mentioned in lines 3, 4 and 5 above were, in a field survey on DEC. 19, 1972, found, recovered, restored, established or re-established as expressed below and in conformance with the rules of the Michigan State Board of Registration for Land Surveyors or, by a Decree of a Court of law:

A. Description of original monument and accessories and/or subsequent restoration:

B. Description of corner evidence found and/or method applied in restoring or re-establishing corner:

- C 11 FOUND MONUMENT BOX
- C 12 FOUND MONUMENT BOX

C. Description of monument for corner and accessories established to perpetuate locating the position of the corner:

- C 11 WITHN. FOUND MON. BOX
 - N. 45° W. 82.2' TOP BOLT ^{ON} FIRE HYDRANT *
 - S. 45° W. 62.8' TOP BOLT ^{ON} FIRE HYDRANT *
 - S. 60° E. 84.7' D.W.S. & MANHOLE
- C 12 WITHN. FOUND MON. BOX
 - N. 45° W. 88.3' N.E. CORNER OF HOUSE # 34007
 - S. 40° W. 88.0' N.E. CORNER OF HOUSE # 33885
 - EAST 9.9' WEST EDGE 5' CONC. WALK

SIGNED BY *Trevor N. Barish* DATE 6/19/78
 SURVEYOR'S MICHIGAN REGISTRATION NO. 24609 (SEAL)

FOR STATE AND UNITED STATES AGENCIES:
 SIGNED BY _____ DATE _____
 CHIEF OF SURVEY PARTY
 APPROVED AND SIGNED BY _____ DATE _____
 MICHIGAN REGISTERED LAND SURVEYOR (SEAL)

SURVEYOR'S MICHIGAN REGISTRATION NO. _____ 00781
 FORM APPROVED BY MICHIGAN STATE BOARD OF REGISTRATION, JAN. 28, 1971
 REVISED MAY 14, 1975

FRASER
 MACOMB CO.
 628-7710

MAY PLACE SKETCH ON BACK OR ATTACHED SHEET

LAND CORNER RECORDATION CERTIFICATE

FILING REQUIREMENT OF ACT 74, MICH. P.A. 1970

A462951

FOR CORNERS OF:-	LOCATED IN:-	CORNER CODE NUMBER	
1. PUBLIC LAND SURVEY	T. 2 S. R. 13 W.	C 11, C 12	RECORDED IN MACOMB COUNTY RECORDS 11:30a.m.
2. PROPERTY CONTROLLING IN SECTION	T. N. S. R. E. W.		NOV 15 1977
3. MISCELLANEOUS PROPERTY IN SECTION	T. N. S. R. E. W.		CLERK, REGISTER OF DEEDS MACOMB COUNTY, MICHIGAN
4. LOT NO. _____	RECORDED PLAT _____		
5. PRIVATE CLAIMS _____			REGISTER OF DEEDS STAMP AND FILING NUMBER

I, JOHN MACDONALD, do hereby certify that under requirements of P.A. 74, Michigan P.A. of 1970, the corner points mentioned in lines 1 and 2 above were, in a field survey on OCTOBER 12, 1977, established, re-established, monumented, re-monumented, recovered or restored as expressed below and in conformance with regulations and rules therefore as required in the current manual of survey instructions of the United States Department of the Interior, Bureau of Land Management or by a decree of a court of law. Furthermore, that the corner points mentioned in lines 3, 4 and 5 above were, in a field survey on OCTOBER 12, 1977, found, recovered, restored, established or re-established as expressed below and in conformance with the rules of the Michigan State Board of Registration for Land Surveyors or, by a Decree of a Court of law:

A. Description of original monument and accessories and/or subsequent restoration:

B. Description of corner evidence found and/or method applied in restoring or re-establishing corner:

C 11 FOUND MONUMENT BOX.
C 12 FOUND MONUMENT BOX.

C. Description of monument for corner and accessories established to perpetuate locating the position of the corner:

C 11 - E GARFIELD ROAD & 1/2 MILE ROAD.
N 45° W 82.2' TOP BOLT ON FIRE HYDRANT. *
S 45° W 62.8' TOP BOLT ON FIRE HYDRANT. *
S 60° E 24.7' E DWS MANHOLE.

C 12 - E GARFIELD ROAD (# 34097)
N 45° W 88.3' N.E. CORNER OF 1 STORY CONC. BLOCK HSE
S 40° W 88.0' N.E. CORNER OF 1 STORY CONC. BLOCK HSE (# 33885)
EAST 53.9' WEST EDGE OF S' CONC. WALK.

SIGNED BY John Macdonald DATE OCT 24 '77

SURVEYOR'S MICHIGAN REGISTRATION NO. 4018 (SEAL)
FOR STATE AND UNITED STATES AGENCIES:

SIGNED BY _____ DATE _____
CHIEF OF SURVEY PARTY

APPROVED AND SIGNED BY _____ DATE _____
MICHIGAN REGISTERED LAND SURVEYOR (SEAL)

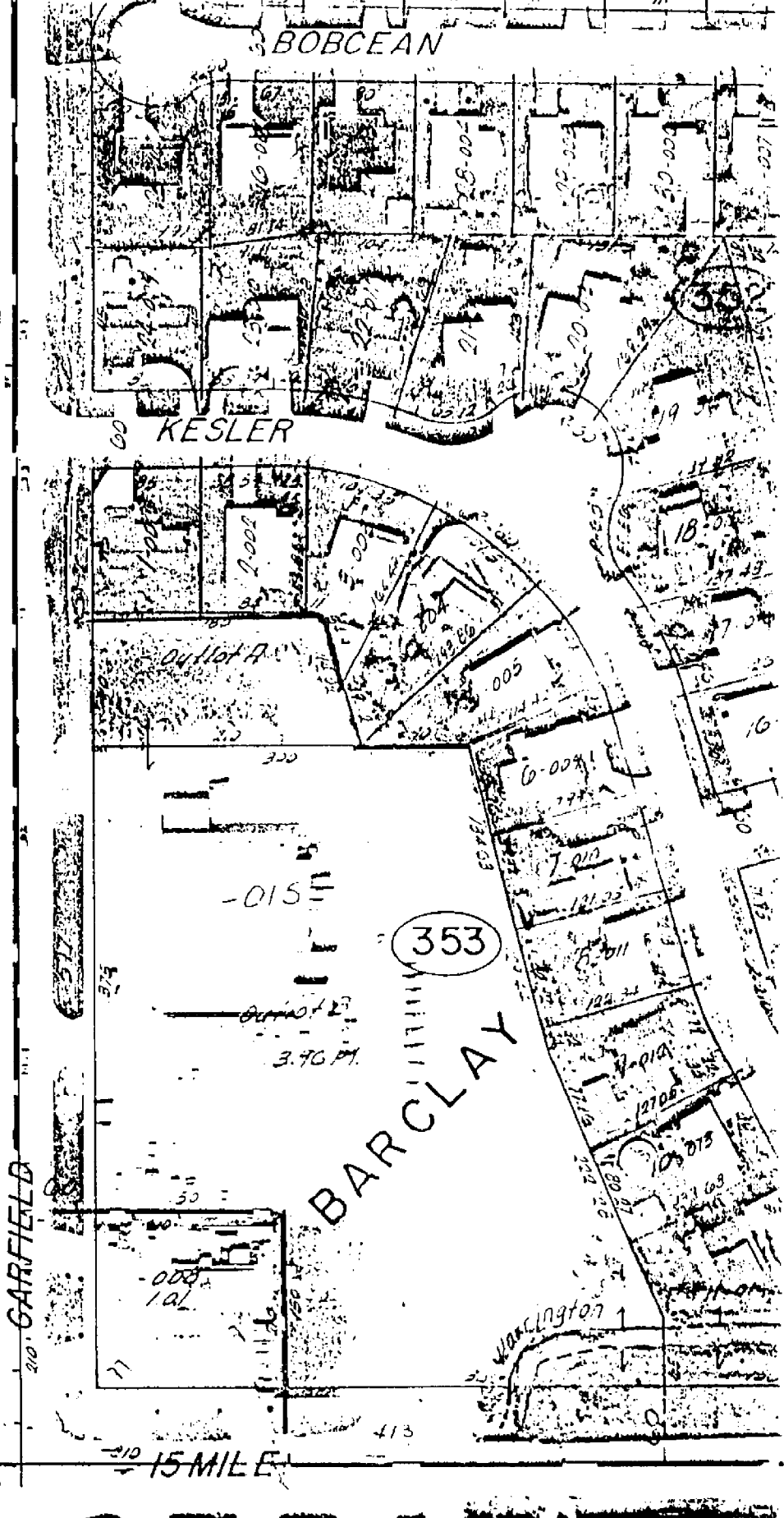
filed
SURVEYOR'S MICHIGAN REGISTRATION NO. _____

87
86
85
83
82
76

1972
COUNTY, MICHIGAN

1" = 100'

29E



353

BARCLAY

GARFIELD

15 MILE

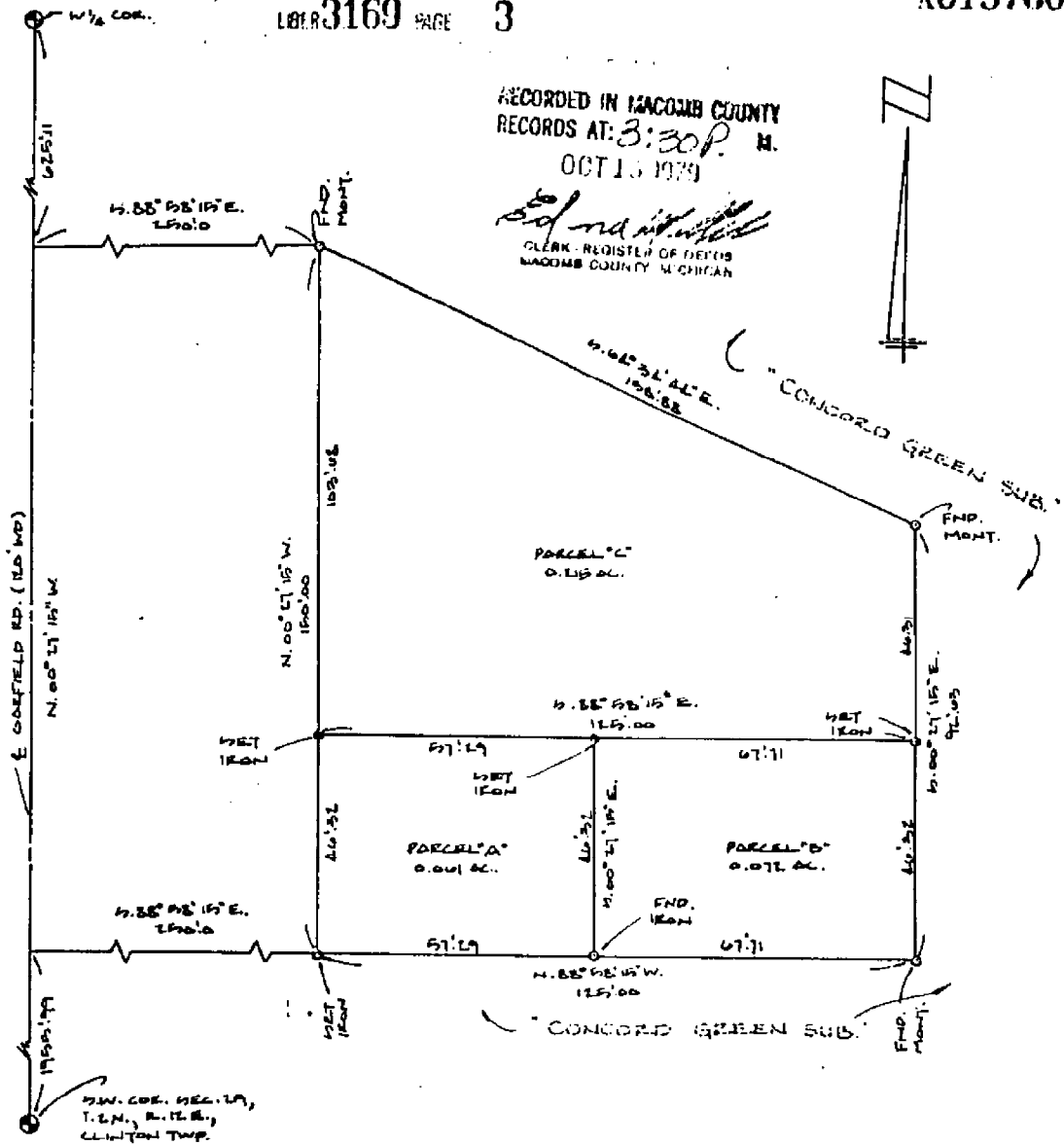
CLIN

W. 1/2 S.W. 1/4 S

CERTIFICATE OF SURVEY

LIBER 3169 PAGE 3

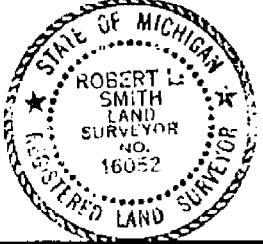
A615760



RECORDED IN MACOMB COUNTY
RECORDS AT: 3:30 P. M.
OCT 15 1979
Robert L. Smith
CLERK - REGISTER OF DEEDS
MACOMB COUNTY MICHIGAN

D.W. COE, SEC. 19,
T. 12 N., R. 12 E.,
CLINTON TWP.
PREVIOUSLY RECORDED
LIBER 2679 PAGE 823

I, **ROBERT L. SMITH** a Registered Surveyor in the State of Michigan, hereby certify that I have surveyed the parcel (s) of land described and delineated hereon; that said plat is a true representation of the survey as performed by me, and that there are no encroachments other than as shown hereon; that said survey was performed with an error of closure no greater than 1 in 5000; and that I have fully complied with the requirements of Section #3, Act #132, P.A. 1970.



Robert L. Smith
LEHNER ASSOCIATES, INCORPORATED
ENGINEERS & SURVEYORS
2300 WELLINGTON CRESENT
MT. CLEMENS MICHIGAN
(313) 463-4594

SCALE: 1"=30'
DATE: 7-27-79

5