

LAND CORNER RECORDATION CERTIFICATE
Filing Requirement of Act 74, Mich. P.A. 1970

C152220
94 DEC 14 AM 10:52

MACOMB COUNTY
REGISTER OF DEEDS
CLINTON TOWNSHIP

For corners in
MACOMB
(County)

Located In: **Clinton Township** Corner Code #

1. Public Land Survey T 2N R 13E C-8
T _____ R _____
T _____ R _____
T _____ R _____
2. Property Controlling in Section S _____ T _____ R _____
S _____ T _____ R _____
3. Miscellaneous Property in Sec. S _____ T _____ R _____
S _____ T _____ R _____

LIBER 6527 PAGE 797

Register of Deeds Stamp & File Number

4. Lot No. _____, Recorded Plat _____
5. Private Claims _____

	A	B	C	D	E	F	G	H	I	J	K	L	M
2	6	5	4	3	2	1							
3													
4	7	8	9	10	11	12							
5													
6	18	17	16	15	14	13							
7													
8	19	20	21	22	23	24							
9													
10	30	29	28	27	26	25							
11													
12	31	32	33	34	35	36							
13													

I, Randy Kolehouse, in a field survey on Sept. 26, 19 94, do hereby certify that under requirements of P.A. 74, Michigan P.A. of 1970, the corner points mentioned in lines 1 and 2 above were in conformance with regulations and rules therefore as required in the current manual of survey instructions of the United States Department of the Interior, Bureau of Land Management or by a decree of a Court of Law and/or that the corner points mentioned in lines 3, 4 and 5 above were in conformance with the rules of the Michigan Board of Land Surveyors or by a Decree of a Court of Law; established, re-established, monumented, re-monumented, recovered, found as expressed below:

NOTE: Not more than 4 corners, all in the same town and range, may be recorded on this certificate.

A. Description of original monument and accessories and/or subsequent restoration:

C-8 1817 G.L.O. Notes Preston NA Post
No other evidence of corner on record.

ACCEPTED BY THE MACOMB COUNTY SURVEY PEER GROUP AS THE OFFICIAL CORNER UNDER MICHIGAN PUBLIC ACT 345 OF 1980 AT A MEETING HELD ON 10-4-94
William E. Soderberg
WILLIAM E. SODERBERG, P.S., CHAIRMAN

B. Description of corner evidence found and/or method applied in restoring or reestablishing corner:

C-8 Searched for but did not find any evidence of G.L.O. corner. Set Iron on the center line of Garfield Road extended from the SE corner Section 19 through the P.C. of a curve at Sta. 18+25.43 per Macomb County Road Commission Street Improvement Plans to a distance of 2668.00'. (Average of G.L.O. dist. as measured in Clinton Township) Said point falls 48.75' East of a line between the NE & SE corners of Section 19.

Measure South to C-9 = 2668.0'

Measure North to a Property Controlling Corner on North Side of Clinton River = 1217.57'

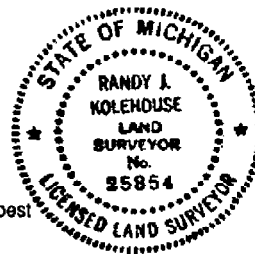
C. Description of monument for corner and accessories established to perpetuate locating the position of the corner:

C-8 I placed a 3/4" x 24" Iron Rod with a 3/4" x 24" Iron Rod w/2" diameter aluminum cap stamped "Macomb County Monument MI Act 345 #25854."

- PK & Macomb Co. Remon. Tag W Face 8" Twin Tree N 30° E 14.05'
- PK & Macomb Co. Remon. Tag W Face 24" Poplar S 20° E 48.02'
- PK & Macomb Co. Remon. Tag Back Curb E Side Garfield Rd. S 83° W 31.37'
- NE Cor. C.B. at Back Curb N 77° W 32.27'
- PK & Macomb Co. Remon. Tag W Face Guy Pole N 17° W 81.60'

The selected location is accepted by me and is generally accepted by professional surveyors as the best available evidence of the position of the original corner.

Signed by Randy J. Kolehouse Date 10/14/94
Surveyor's Michigan License No. 25854



1679.56'

FOUND PK IN ROAD
17.00' EAST

SET IRON ON CENTERLINE
ROAD 2668' FROM SOUTH

FOUND IRON AT R\W
48.75' WEST

2668.00M

M. 28.29CC

UNI-SEC-BLK-PAR-SF CLASS SCHOOL ACRES LIBER-PAGE PREVIOUS-YR CHG-IN CURRENT VALUATION YR-ASSESSED

011-020-063-00 * * * * * 401 00016 0000-0000 62,354 1,247 63,601 94

OWNER# KLEIND ROGER A & E 3220C CLINTON TOWNSHIP MI 48035

50-11-20-302-001 SALE LAND- ELES-

D 256A & 257 699
 T2N R13E SEC 20
 COMM AT SW COR SEC 20; TH N 04 DEG 16'
 00" E 2070.50 FT ALG C/L GARFIELD RD TO
 C/L OF MILLAR RD; TH N 83 DEG 09' 34" E
 ALG C/L OF MILLAR RD 295.63 FT; TH N 01
 DEG 40' 33" E 43.58 FT TO THE N LINE OF
 MILLAR RD AND POB; TH S 83 DEG 09' 34" W
 ALG N LINE OF MILLAR RD 239.72 FT TO THE
 E'LY LINE OF GARFIELD RD; TH ALG THE
 E'LY LINE OF GARFIELD RD ALG A
 C/A OF 04 DEG 38' 40", RAD=5789.58 FT,
 ARC LENGTH OF 469.30 FT AND A CHORD OF N
 00 DEG 57' 54" W 469.17 FT; TH S 84 DEG
 00' 30" E 179.15 FT; TH S 40 DEG 44'
 08"E 118.70 FT; TH S 01 DEG 40' 33" W
 332.05 FT TO THE POB. CONTAINING 2.403
 ACRES.

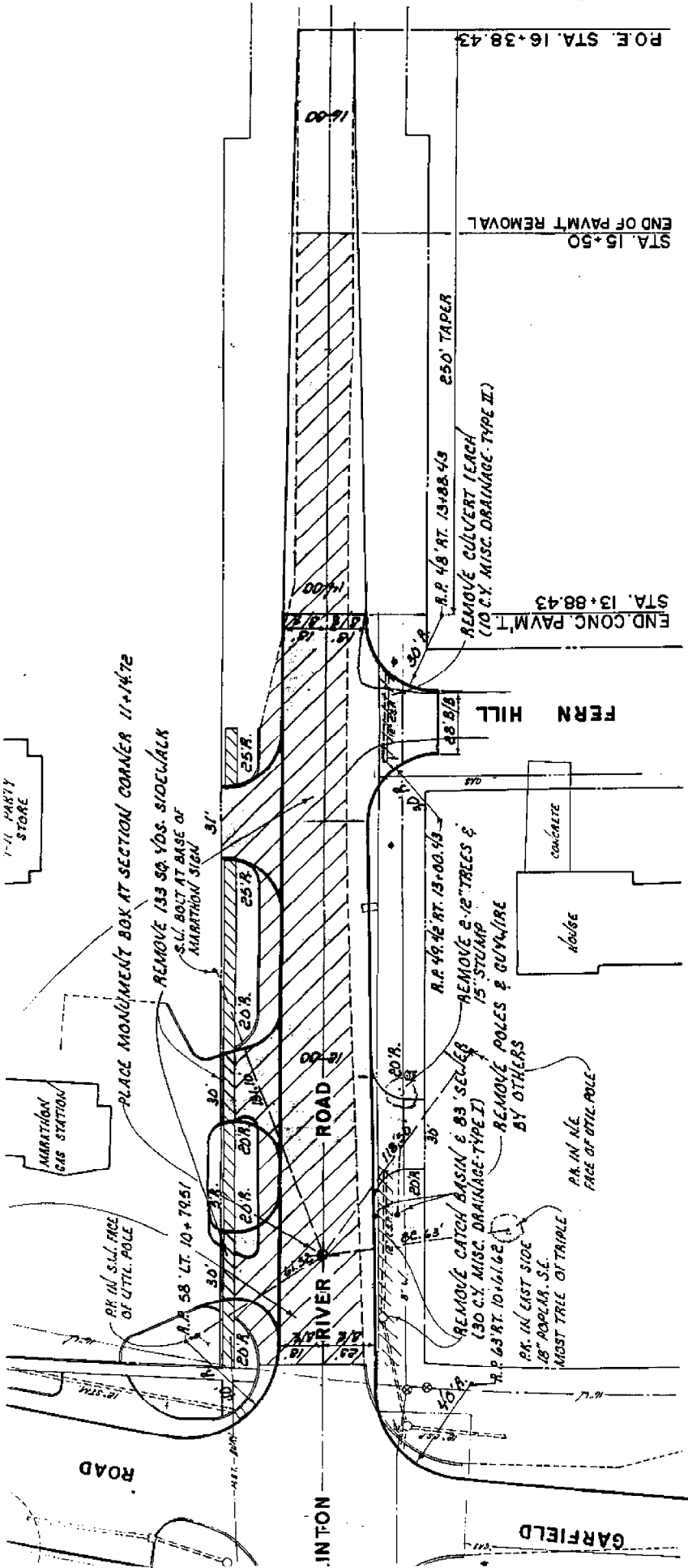
011-020-064-00 * * * * * 090 00016 0000-0000 0 0 0 76

OWNER# MACOMB COUNTY ROAD COMM CLINTON TOWNSHIP MI 48036

MAIL TO MACOMB COUNTY ROAD COMM MT CLEMENS MI 48043

50-11-20-153-001 SALE LAND- ELES-

D 256B
 T2N R13E SEC 20
 THAT PART OF W 1/2 OF W 1/2 OF SEC
 20, W OF CLINTON RIVER, N OF THE
 OLD GARFIELD RD & E OF NEW
 GARFIELD RD EXC SLY 0.25 ACRES.



KSTEIN AND WESTRICK INC. CIVIL ENGINEERS 4200 GARFIELD ROAD MOUNT CLEMENS, MICHIGAN 48048 PHONE (313) 286-1234		GEOMETRICS & REMOVAL PLAN		PRELIMINARY <input checked="" type="checkbox"/> CONSTRUCTION <input type="checkbox"/> AS-BUILT <input type="checkbox"/>	CLIENT MACOMB CO. ROAD DEPT.	SCALE 1"=165'	DATE FEBRUARY 1985	PROJECT NO. 23006
				DRAWN BY P.A.S.	CHECKED BY	SHEET NO. R-4		

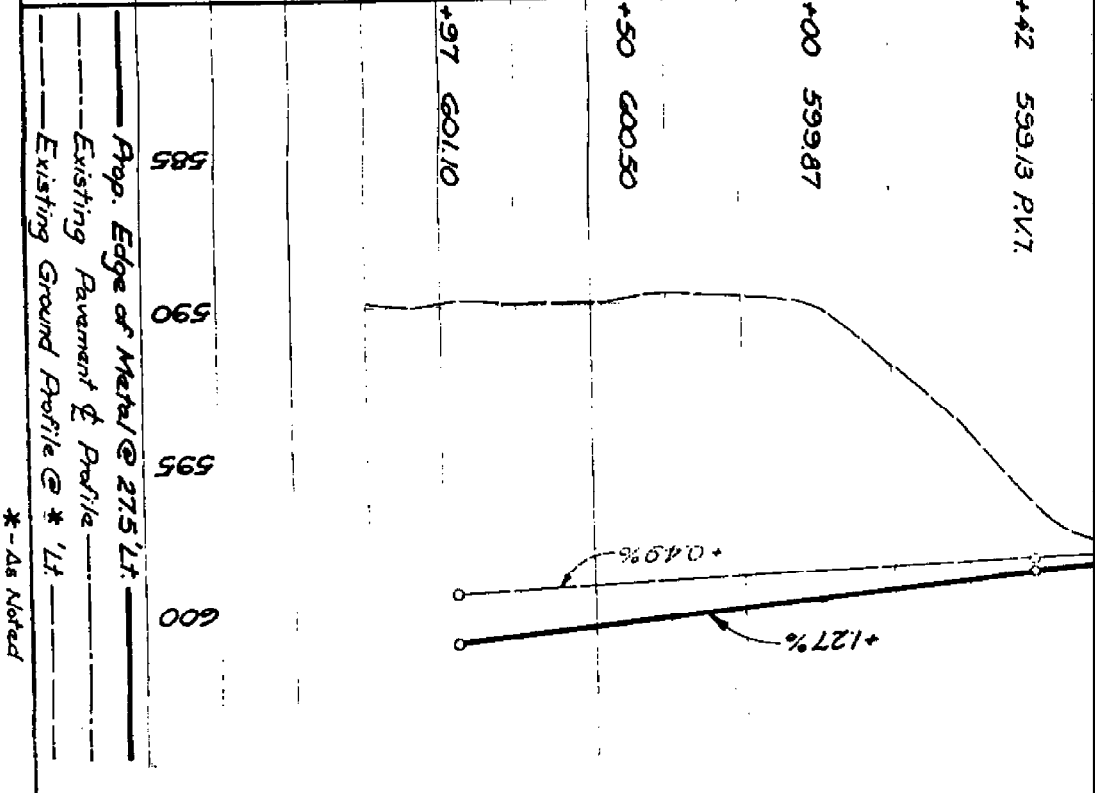
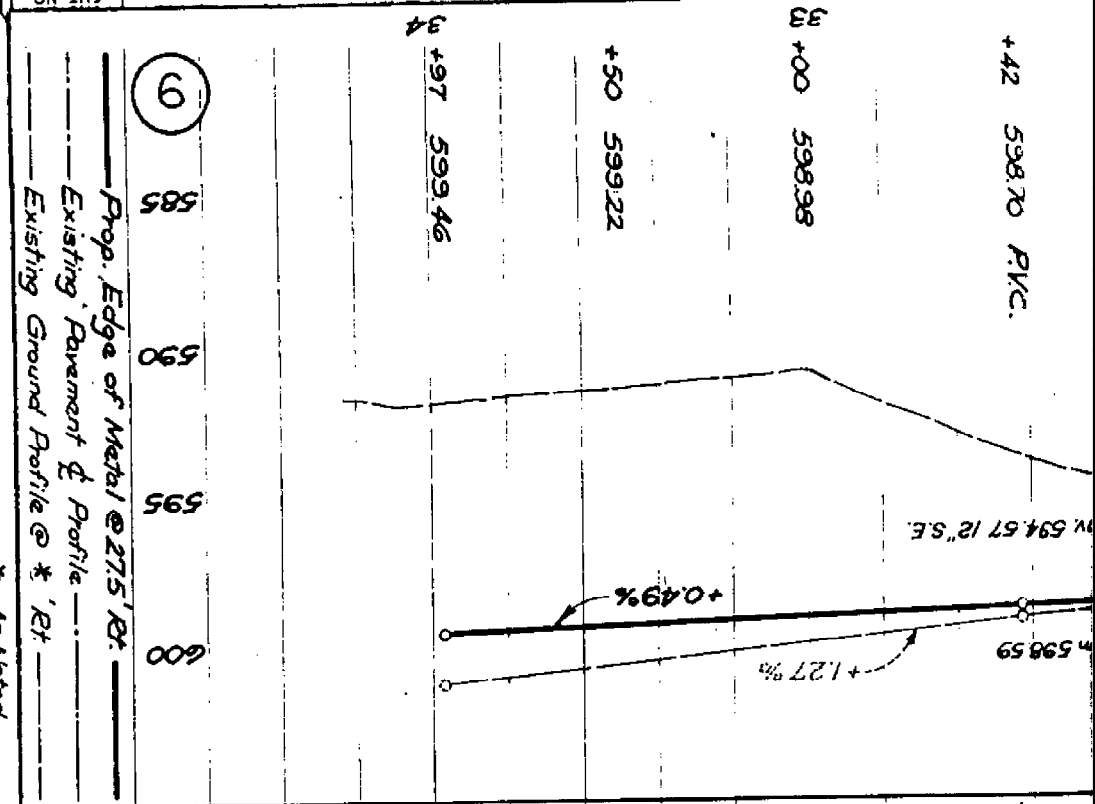
STA. 15+50
 END OF PAYMT REMOVAL
 P.O.E. STA. 16+38.43

END CONC. PAYM'T
 (10 CY MISC. DRAINAGE-TYPE II)
 STA. 13+88.43
 R.P. 48 RT. 13+88.43
 REMOVE CULVERT LEACH
 250' TAPER

FERN HILL
 R.P. 49.42 RT. 13+00.49
 REMOVE 2-12" TREES &
 15" STUMP
 REMOVE POLES & GUYWIRE
 BY OTHERS
 R.P. 49.42 RT. 13+00.49
 REMOVE CATCH BASIN & 89' SELLER
 (30 CY MISC. DRAINAGE-TYPE I)
 REMOVE POLES & GUYWIRE
 BY OTHERS
 R.P. 58.17.10+79.51
 REMOVE 133 SQ YDS. SIDEWALK
 S.U. BOLT AT BASE OF
 MARATHON SIGN
 31'

REMOVE CATCH BASIN & 89' SELLER
 (30 CY MISC. DRAINAGE-TYPE I)
 REMOVE POLES & GUYWIRE
 BY OTHERS
 R.P. 58.17.10+79.51
 REMOVE 133 SQ YDS. SIDEWALK
 S.U. BOLT AT BASE OF
 MARATHON SIGN
 31'

REMOVE CATCH BASIN & 89' SELLER
 (30 CY MISC. DRAINAGE-TYPE I)
 REMOVE POLES & GUYWIRE
 BY OTHERS
 R.P. 58.17.10+79.51
 REMOVE 133 SQ YDS. SIDEWALK
 S.U. BOLT AT BASE OF
 MARATHON SIGN
 31'



* - As Noted

* - As Noted

paid for as "clearing" per station, regardless of tree size.

Bench Mark No. 4

Elev. 599.53

R.R. Spike in DE. Pole on

W.S. Garfield Stat. 37+43

PLANS SEE SHT. NO. 48

NOTE:

FOR STA. 31+87 TO STA. 41+40

SEE PLANS BY ANDERSON, ECKSTEIN,

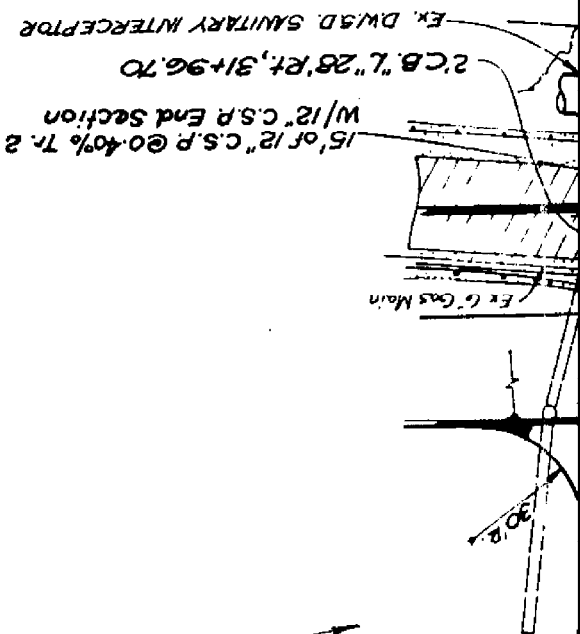
& WESTRICK INC. - FOR STA. 41+40 TO

55+20 (N.Y. PROJECT LIMITS) SEE

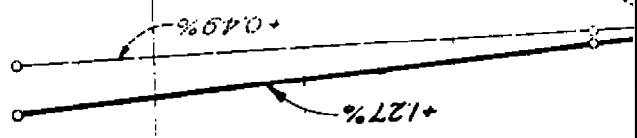
PATE, HIRN & BOGUE INC. PLAN SHTS.

9 ± 10.

DRW.



Note: All tree and shrub removal on this sheet which is necessary for the proper placement of the Embankment shall be paid for as "Clearing" per station, regardless of tree size.



600

75' Lt

* Lt

* - As Noted

HIRN & BOGUE, INC.
ENGINEERS
EVE MILE ROAD, SOUTHFIELD, MICH. 48076

JOB NO. 12850

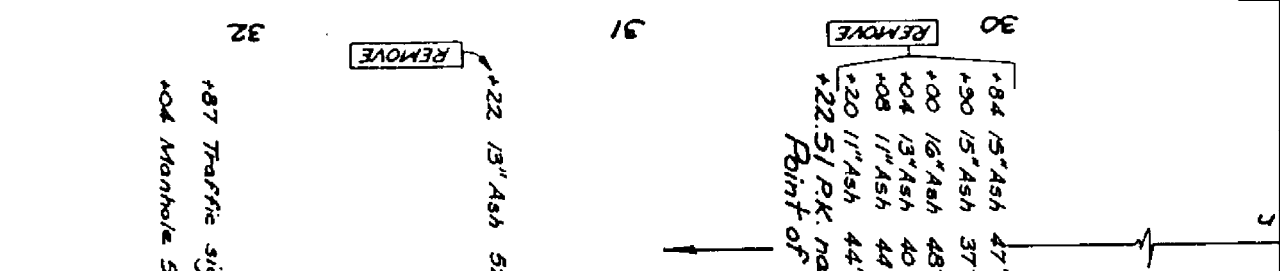
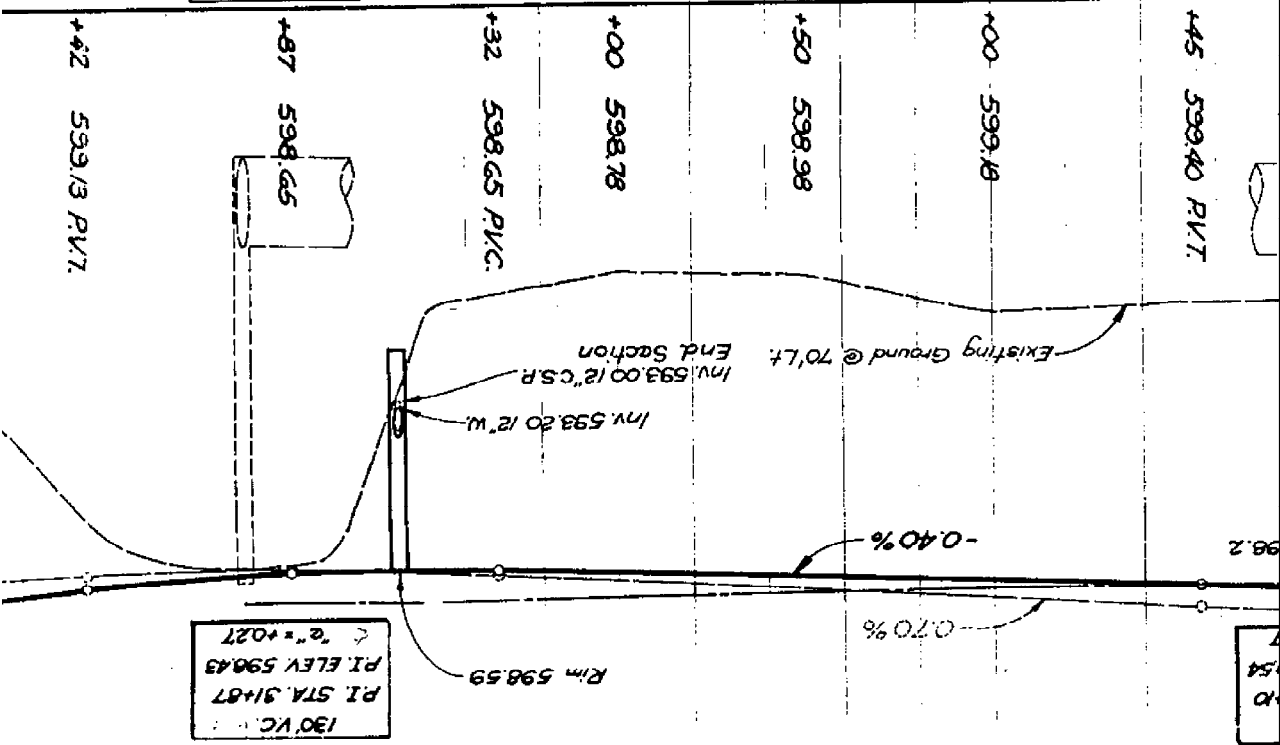
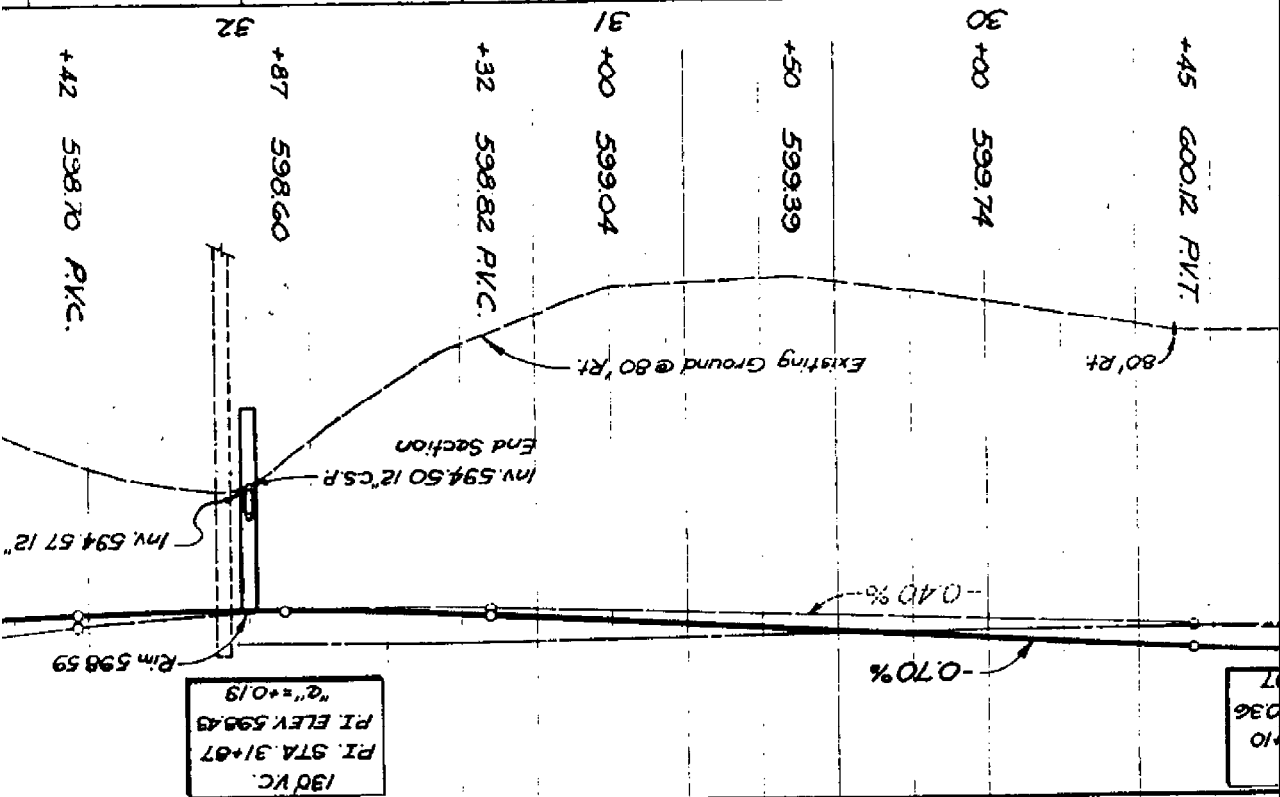
AS CONST.

DATE

MDOT JOB NO. 23518

COUNTY PROJ.

30	+00	599.74	30	+00	599.74
31	+00	599.04	31	+00	599.04
32	+32	598.82 P.V.C.	32	+32	598.82 P.V.C.
	+87	598.60		+87	598.60
	+42	598.70 P.V.C.		+42	598.70 P.V.C.



- REMOVE
- +84 1/5" Ash 47'
 - +90 1/5" Ash 37'
 - +00 1/6" Ash 48'
 - +04 1/3" Ash 40'
 - +08 1/1" Ash 44'
 - +20 1/1" Ash 44'
 - +22.51 P.K. na
- Point of

REMOVE

+22 13" Ash 5'

+87 Traffic Sign

+04 Manhole 5'

130' VC
 P.I. STA. 31+87
 P.I. ELEV. 598.43
 2" = +0.27

Rim 598.59

-0.70%

-0.40%

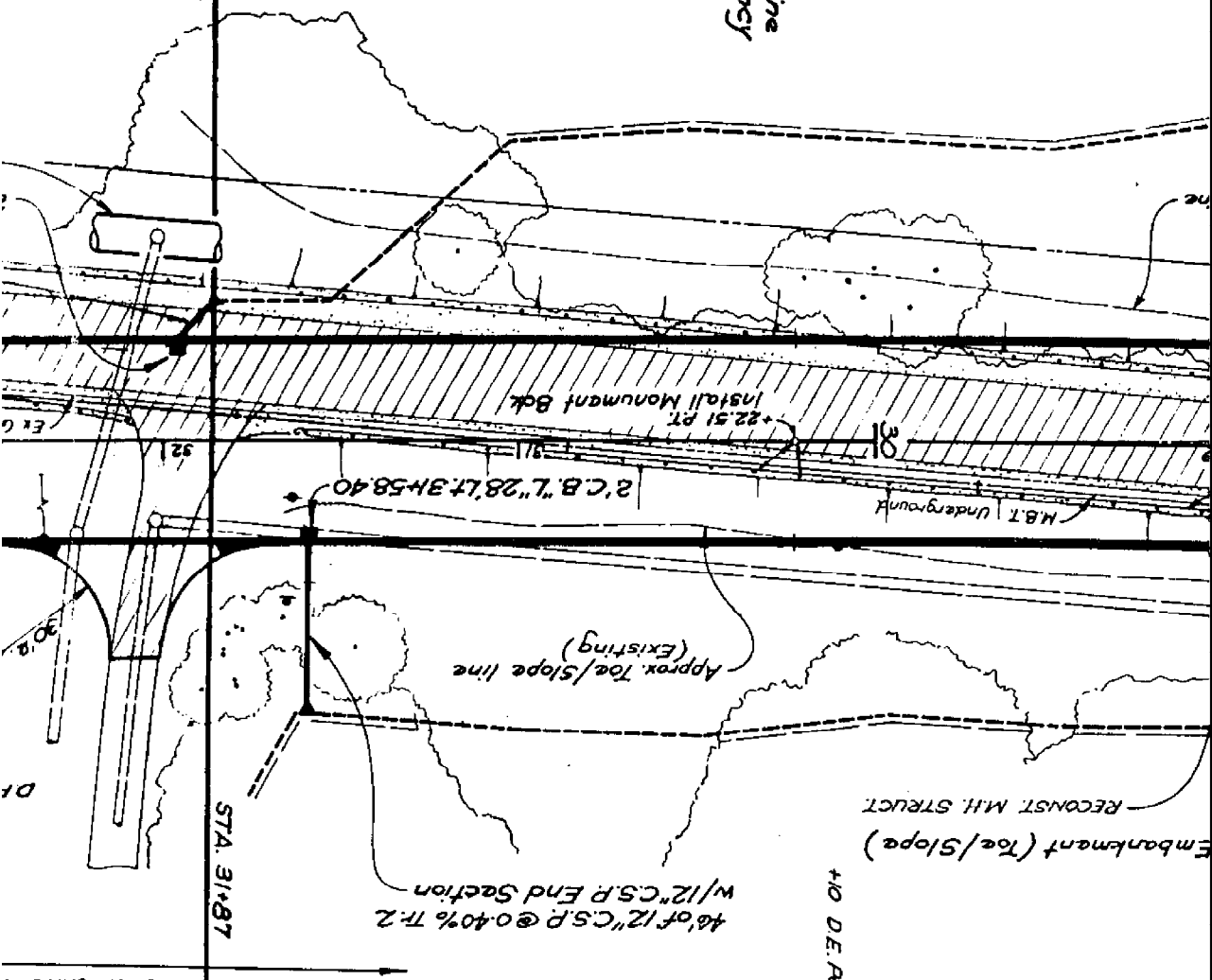
REMOVE

REMOVE

- +84 15" Ash 47' RT.
 - +90 15" Ash 37' RT.
 - +00 16" Ash 48' RT.
 - +04 15" Ash 40' RT.
 - +08 11" Ash 44' RT.
 - +20 11" Ash 44' RT.
- +22.51 PK. nail on line
 Point of tangency

+22 1/3" Ash 52' RT

+87 Traffic sign 45' RT.
 +04 Manhole 56' RT.



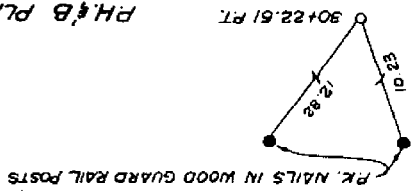
STA. 31+87

46' of 12" C.S.P. @ 0.40% T.R. 2
 w/ 12" C.S.P. End Section

Embankment (Toe/Slope)
 RECONSTR. M.H. STRUCT.

+10 D.E. Pole 29.5' LT.

RELOCATE



PH & B PLANS
 A.E.W. PLANS

01

01

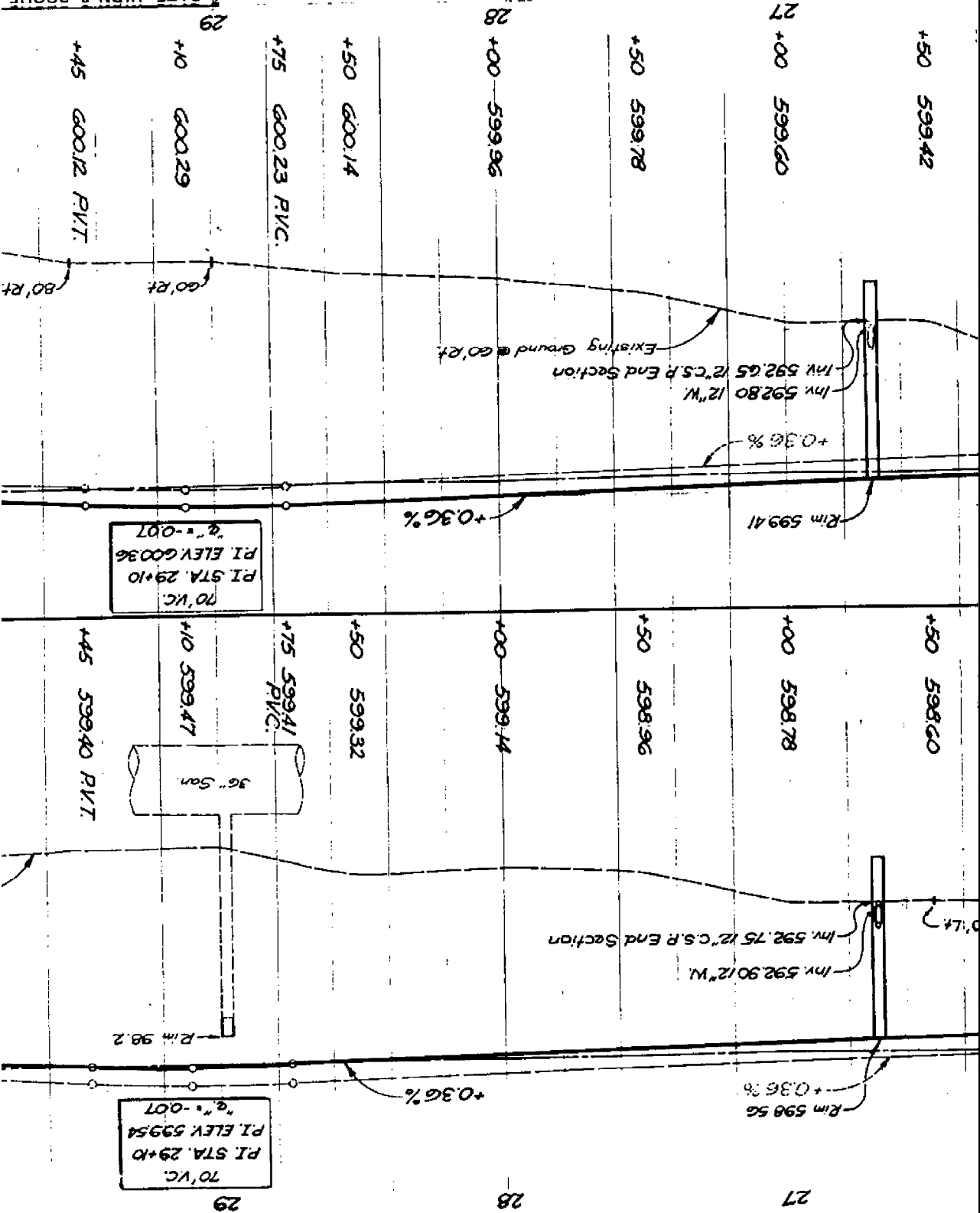
Et G

ne

2

98.2

PATE, HIRN & BOGUE,
 CIVIL ENGINEERS
 17000 TWELVE MILE ROAD, SOUTH



70' V.C.
 P.I. STA. 29+10
 P.I. ELEV. 600.36
 "g" = -0.07

70' V.C.
 P.I. STA. 29+10
 P.I. ELEV. 599.54
 "g" = -0.07

REMOVE

REMOVE

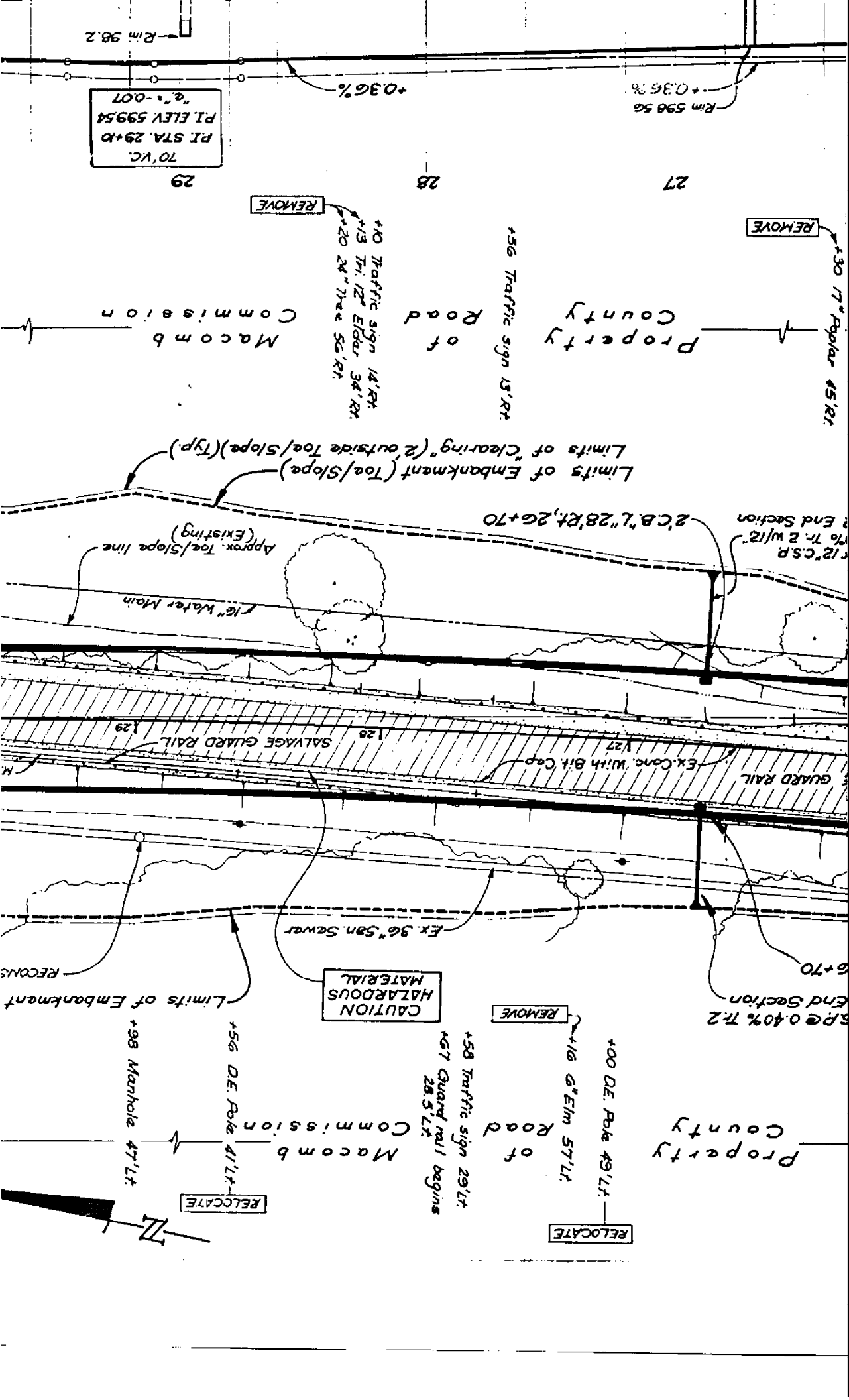
Macomb
 Commission

of
 Road

Property
 County

+40 Traffic sign
 +15 Tr. 12" Eida
 +20 24" Tree 52

+56 Traffic sign



70' VC
 P.I. STA. 29+0
 P.I. ELEV. 599.54
 "a" -0.07

Rim 596.56
 +0.36%

+0.36%

29

28

27

REMOVE

REMOVE

Macomb
 Commission

Property
 of
 County

+30 17" Poplar 45' RT

+56 Traffic sign 15' RT

+40 Traffic sign 14' RT
 +13 7 1/2" Elder 34' RT
 +20 24" Tree 56' RT

Limits of Embankment (Toe/Slope)
 Limits of Clearing (2 outside Toe/Slope) (Typ)

2' C.B.L. 28' RT, 26' TO

12" C.S.P.
 70' T. 2 w/12'
 End Section

Approx. Toe/Slope line
 (Existing)

16" Water Main

SALVAGE GUARD RAIL

EX. CONC. WITH BIT CAP

GUARD RAIL

EX. 36" SAN. SEWER

5' @ 0.40% TR. 2
 6+70
 End Section

Limits of Embankment

CAUTION
 HAZARDOUS
 MATERIAL

REMOVE

+00 D.E. Pole 49' LT

RELOCATE

Road
 of
 County

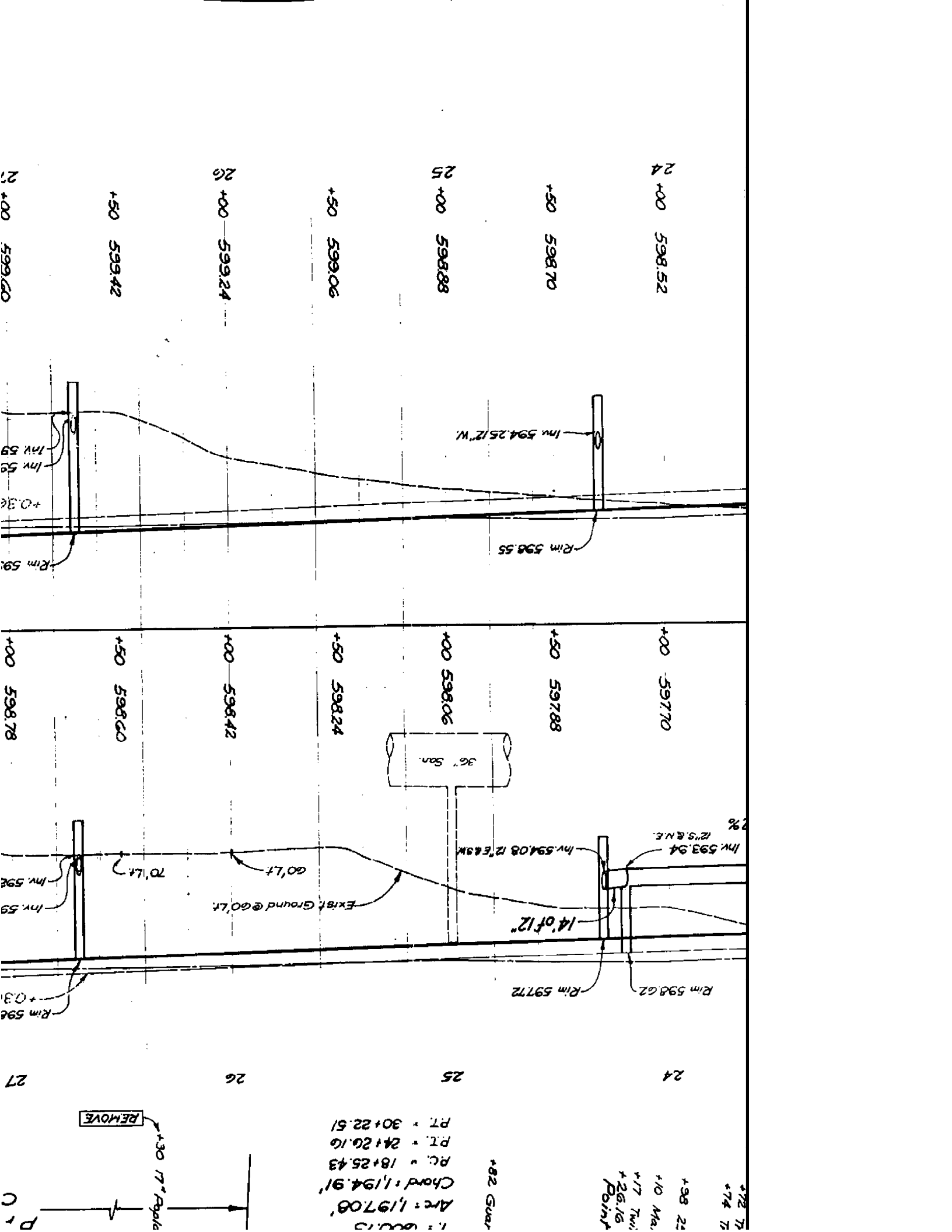
+58 Traffic sign 29' LT
 +67 Guard rail begins
 28.5' LT

+56 D.E. Pole 41' LT

RELOCATE

+98 Manhole 47' LT





24 +00 598.52

+50 598.70

25 +00 598.88

+50 599.06

26 +00 599.24

+50 599.42

27 +00 599.20

+00 597.70

+50 597.88

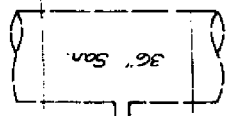
+00 598.06

+50 598.24

+00 598.42

+50 598.60

+00 598.78



36" Dia.

2%
2'5.8" N.E.

Inv. 593.94

Inv. 594.08 12' E. & S.W.

14' 0" 12"

Rim 598.62

Rim 597.72

Exist. Ground @ 60' Lt.

60' Lt.

70' Lt.

Inv. 598

Rim 596

24

25

26

27

+98 24
+10 Ma.
+17 Tw.
+26.16
Point

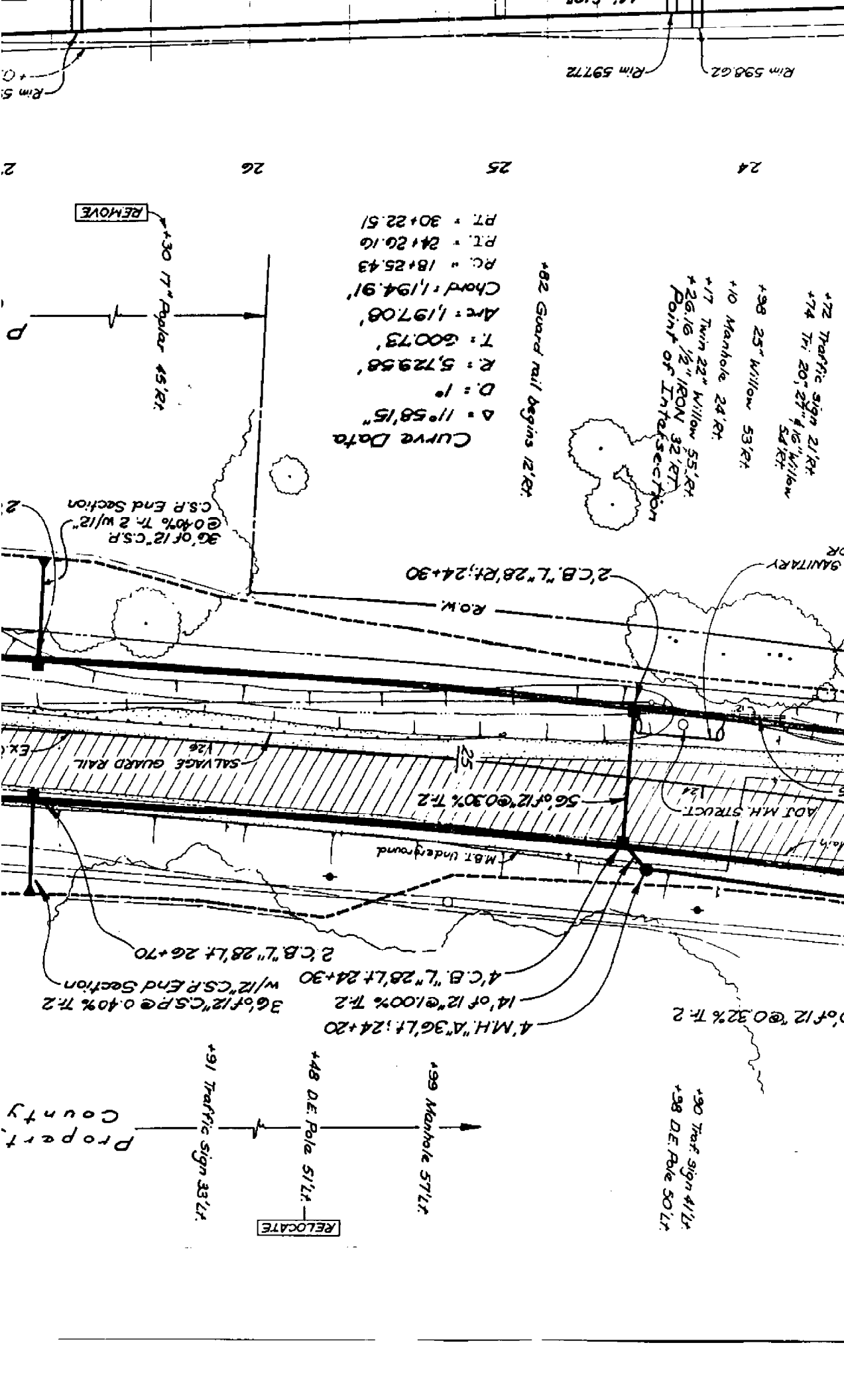
+82 Guar.

1:00:10
Arc: 1,197.08'
Chord: 1,194.91'
P.C. = 18+25.43
P.T. = 24+20.16
P.T. = 30+22.51

REMOVE

+30 17" Point

P.C.



Curve Data
 Δ = 11° 58' 15"
 D = 1°
 R = 5,729.58'
 T = 600.73'
 Arc = 1,197.08'
 Chord = 1,194.91'
 P.C. = 18+25.43
 P.T. = 24+20.16
 P.T. = 30+22.51

+62 Guard rail begins 12' RT

+72 Traffic sign 21' RT
 +74 Tr. 20' 27" 4 1/2" Willow 54' RT
 +98 25" Willow 53' RT
 +10 Manhole 24' RT
 +17 Twin 22" Willow 55' RT
 +26.16 1/2" IRON 32' RT
 Point of Intersection

36' of 12" C.S.P.
 @ 0.40% Tr. 2 w/ 12"
 C.S.P. End Section

2' C.B. "L" 28' LT; 24+30

R.O.W.

SALVAGE GUARD RAIL

56' of 12" @ 0.30% Tr. 2

M.B.T. Underground

2' C.B. "L" 28' LT; 26+70

36' of 12" C.S.P. @ 0.40% Tr. 2
 w/ 12" C.S.P. End Section

4' C.B. "L" 28' LT; 24+30

14' of 12" @ 1.00% Tr. 2

0' of 12" @ 0.32% Tr. 2

+99 Manhole 57' LT

+48 D.E. Pole 51' LT

+91 Traffic sign 33' LT

RELOCATE

+90 Traffic sign 41' LT
 +98 D.E. Pole 50' LT

Property
 County

Rim 598.62
 Rim 597.72

24 25 26

REMOVE

+30 17" Pole 45' RT

D

2

EX

5

Main

1

2

3

4

5

6

7

8

9

10

11

12

13

Prop. Edge of Metal @ 27.5' Rt.	
Existing Pavement Profile	585
Existing Ground Profile @ 'Rt.	598
	595
	600

Prop. Edge of Metal @ 27.5' Lt.	
Existing Pavement Profile	585
Existing Ground Profile @ 'Lt.	590
	595
	600

22 +50 597.98

+50 597.16

23 +00 598.16

+00 597.84

+50 598.34

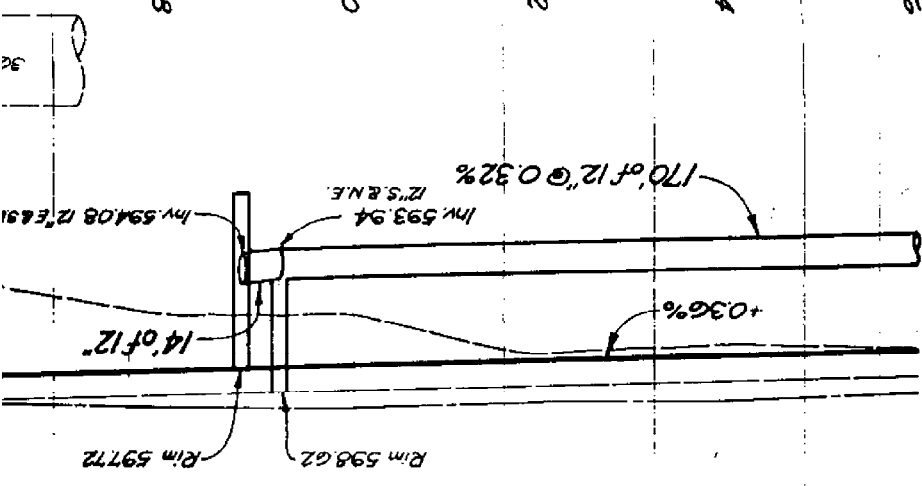
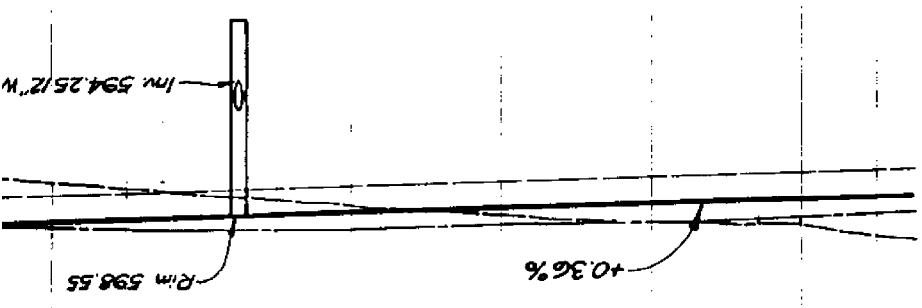
+50 597.52

24 +00 598.52

+00 597.70

+50 598.70

+50 597.88



+82 Guar
 +80
 +78
 +76
 +74
 +72
 +70
 +68
 +66
 +64
 +62
 +60
 +58
 +56
 +54
 +52
 +50
 +48
 +46
 +44
 +42
 +40
 +38
 +36
 +34
 +32
 +30
 +28
 +26
 +24
 +22
 +20
 +18
 +16
 +14
 +12
 +10
 +8
 +6
 +4
 +2
 0
 -2
 -4
 -6
 -8
 -10
 -12
 -14
 -16
 -18
 -20
 -22
 -24
 -26
 -28
 -30
 -32
 -34
 -36
 -38
 -40
 -42
 -44
 -46
 -48
 -50
 -52
 -54
 -56
 -58
 -60
 -62
 -64
 -66
 -68
 -70
 -72
 -74
 -76
 -78
 -80
 -82
 -84
 -86
 -88
 -90
 -92
 -94
 -96
 -98
 -100

75.47

600

17

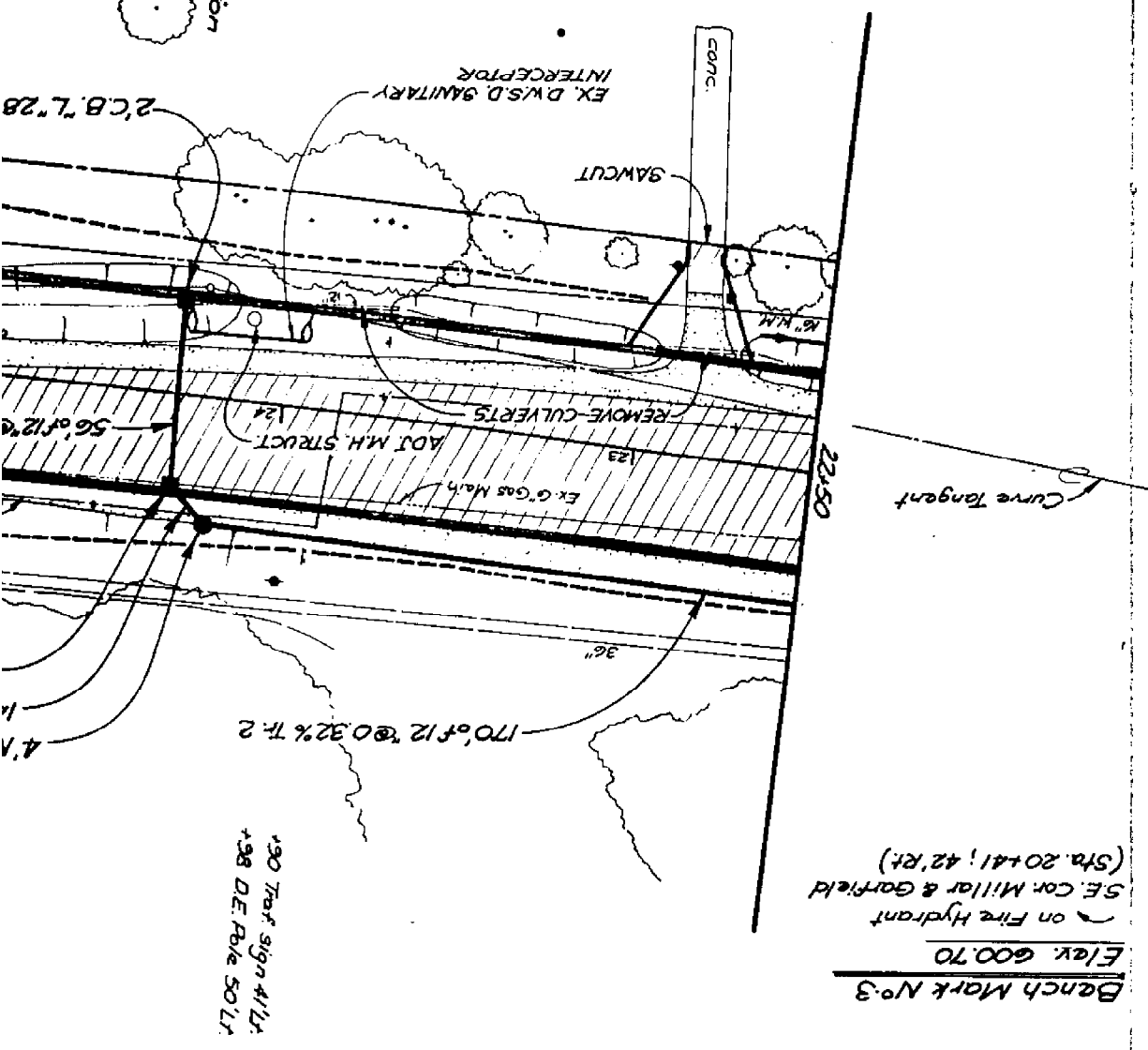
Rim 598.62 Rim 597.72

24

23

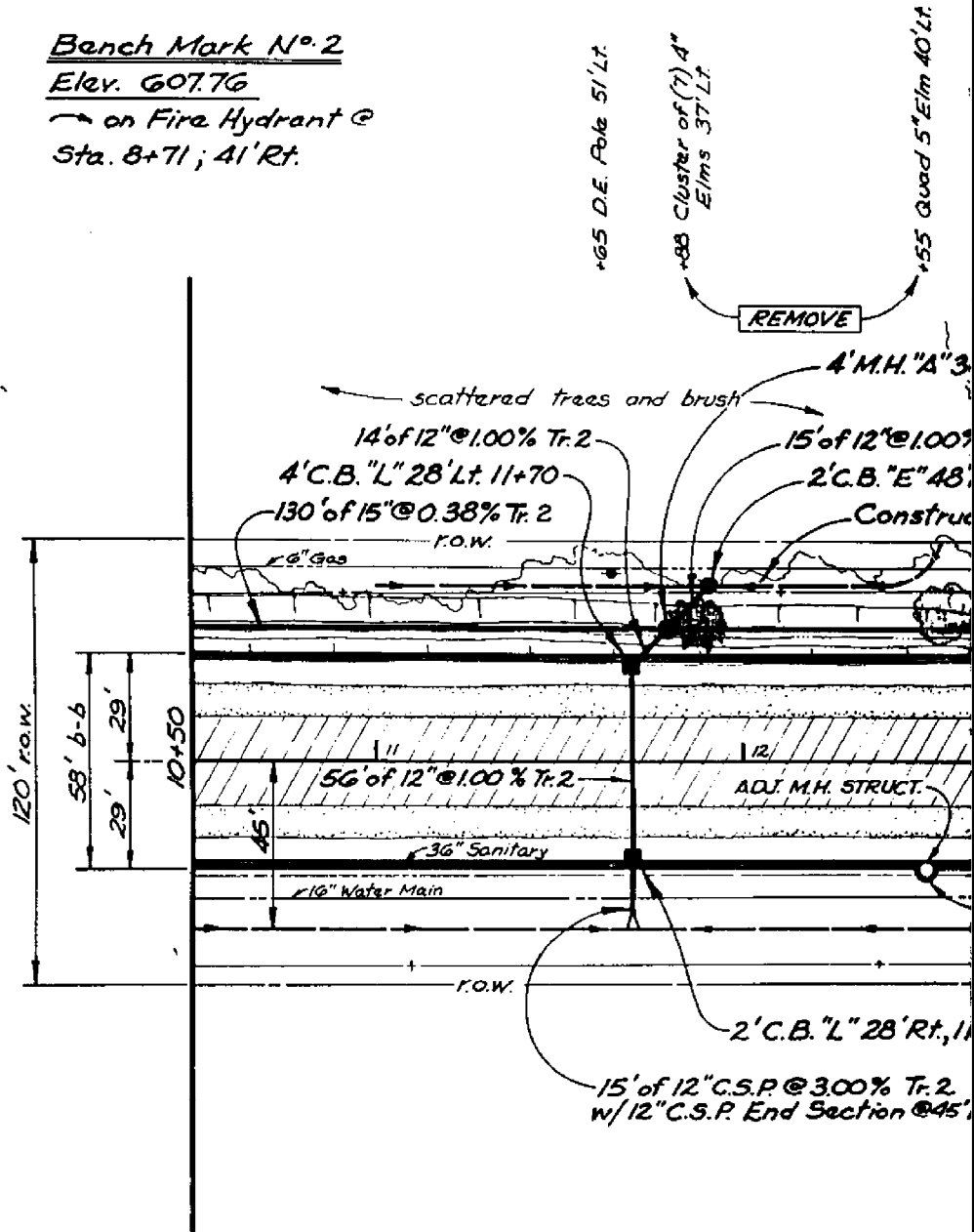
- +68 22" Tree 57'RT
 - +83 Bush 57'RT
 - +83 Mulch 47'RT
 - +85 6" of 10'wd Conc. drive w/1/2' curb
 - +96 D.E. Pole 54'RT
 - +10 Bush
 - +30 Flagpole 115'RT
 - +42 Twin 10" Tree 55'RT
 - +53 Bush 43'RT
 - +72 Traffic sign 21'RT
 - +74 Tr. 20' 27" 4.16" Willow 54'RT
 - +98 25" Willow 53'RT
 - +10 Manhole 24'RT
 - +17 Twin 22" Willow 55'RT
 - +26.16 1/2" IRON 32'RT
- Point of Intersection

+82 Guard rail begins 12'RT

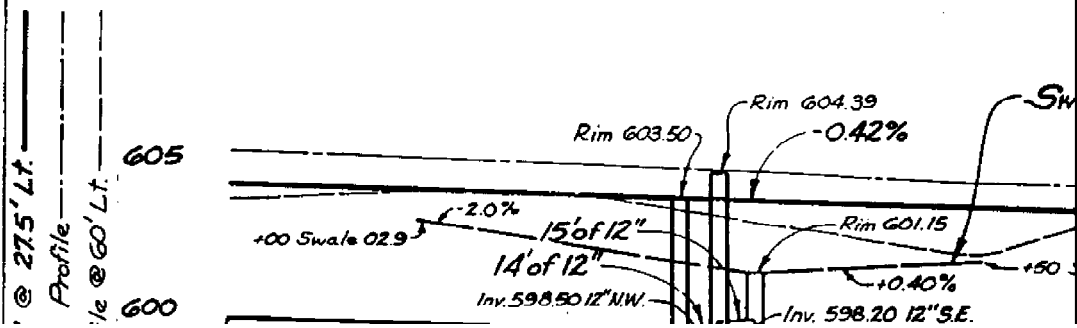


- +90 Traf sign 41'LT
- +98 D.E. Pole 50'LT

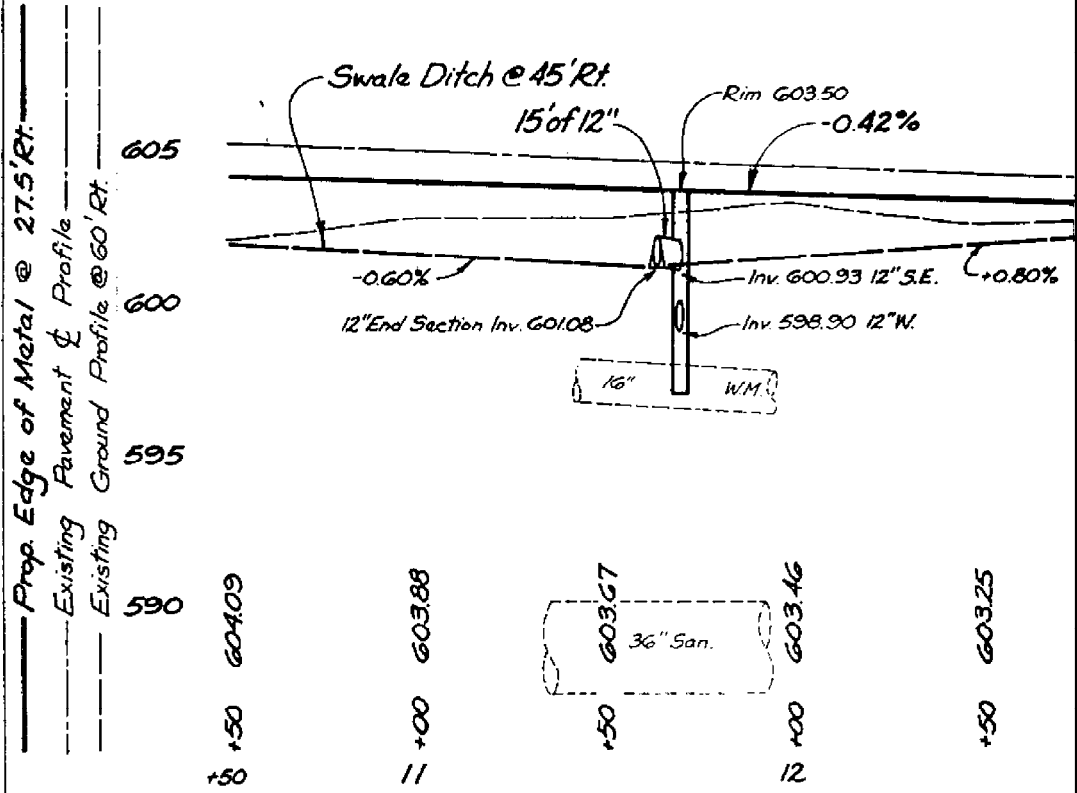
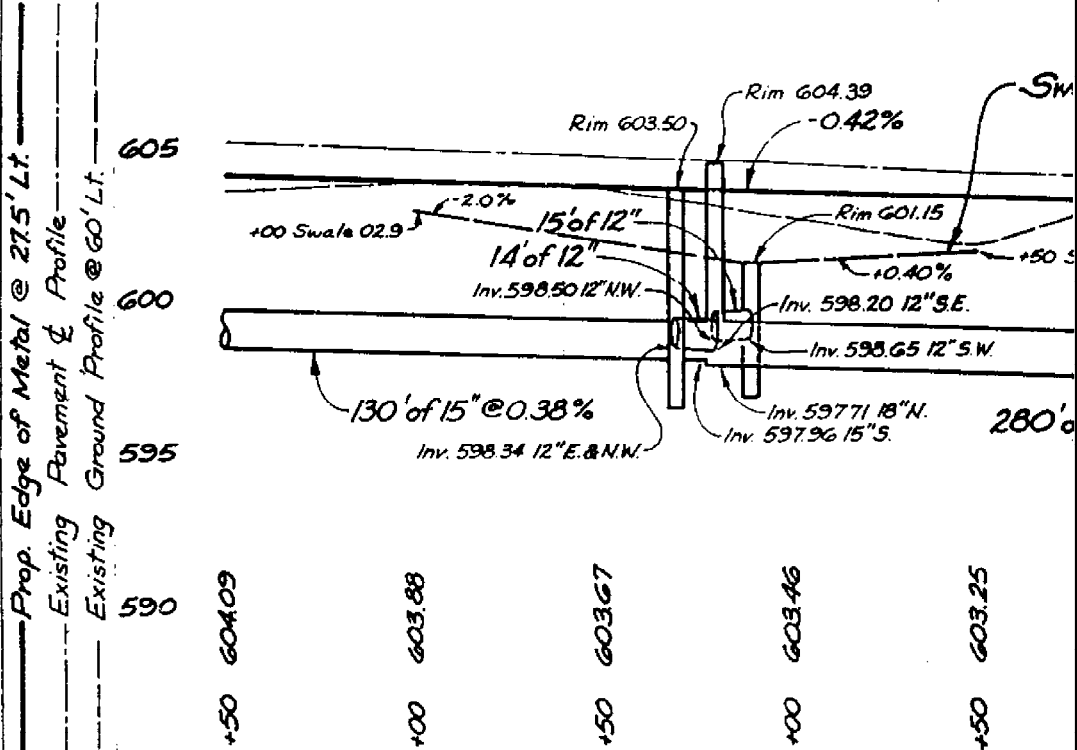
Bench Mark N° 2
Elev. 607.76
 on Fire Hydrant @
 Sta. 8+71; 41' Rt.



PLAN

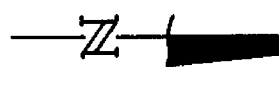


PROFILE

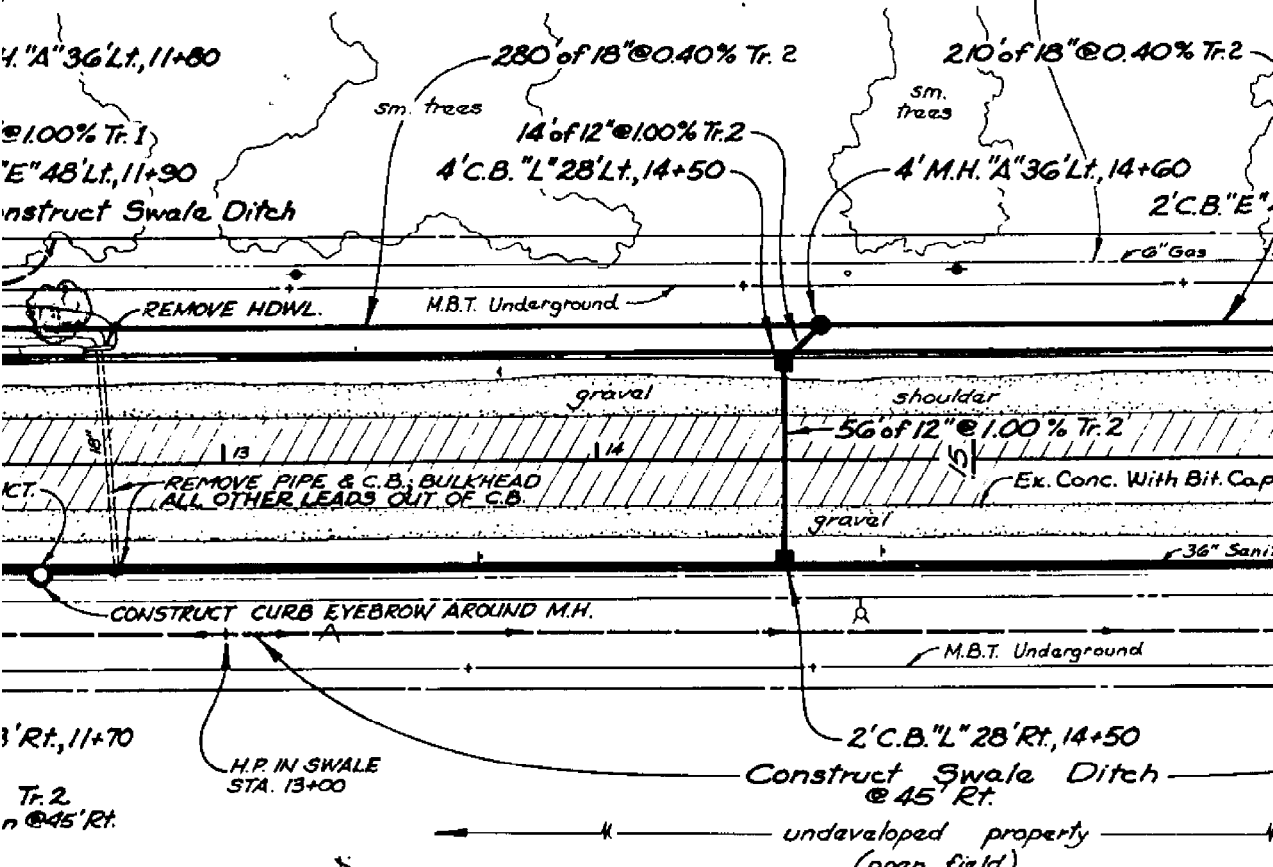


+50 Manho

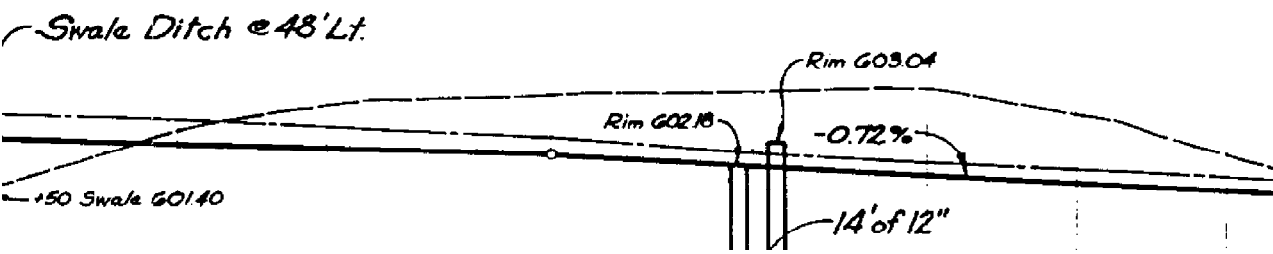
+55 Good 5" Elm 40' Lt.
 +67 End of 18" d cross
 curb to east with
 9' long x 11" wd. conc.
 headwall. 30' Lt.
 +20 D.E. Pole 50' Lt.
 +74 Traffic sign 24' Lt.
 +67 M.B.T. underground
 marker 50' Lt.
 +98 D.E. Pole 51' Lt.



CAUTION
 HAZARDOUS
 MATERIAL



3' Rt., 11+70
 Tr. 2
 n @ 45' Rt.
 H.P. IN SWALE
 STA. 13+00
 2' C.B. L 28' Rt., 14+50
 Construct Swale Ditch
 @ 45' Rt.
 undeveloped property
 (open field)
 +50 Manhole 29' Rt.
 +71 Catch Basin 29' Rt.
 +90 Commercial Sign 42' Rt.
 +70 Traffic Sign 24' Rt.
 +70 Fire Hydrant 40' Rt.
 +73 Traffic sign 23' Rt.



ITION
RDOUS
ERIAL

+20 D.E. Pole 50' Lt.

+47 Guy Anchor 50' Lt.
+51 14" Apple 63' Lt.

+72 12" Spruce 62' Lt.
+78 Mailbox 27' Lt.

+88 2" of 10' wd conc. dr.
w/18" Culvert
+95, +03, +08 and +14 ...
Bushes 56' Lt.

+10 6" Cedar 62' Lt.

+29 10" Spruce 62' Lt.

+42 Bush 56' Lt.

+57 6" Blue Spruce 70' Lt.

+58 Bush 56' Lt.

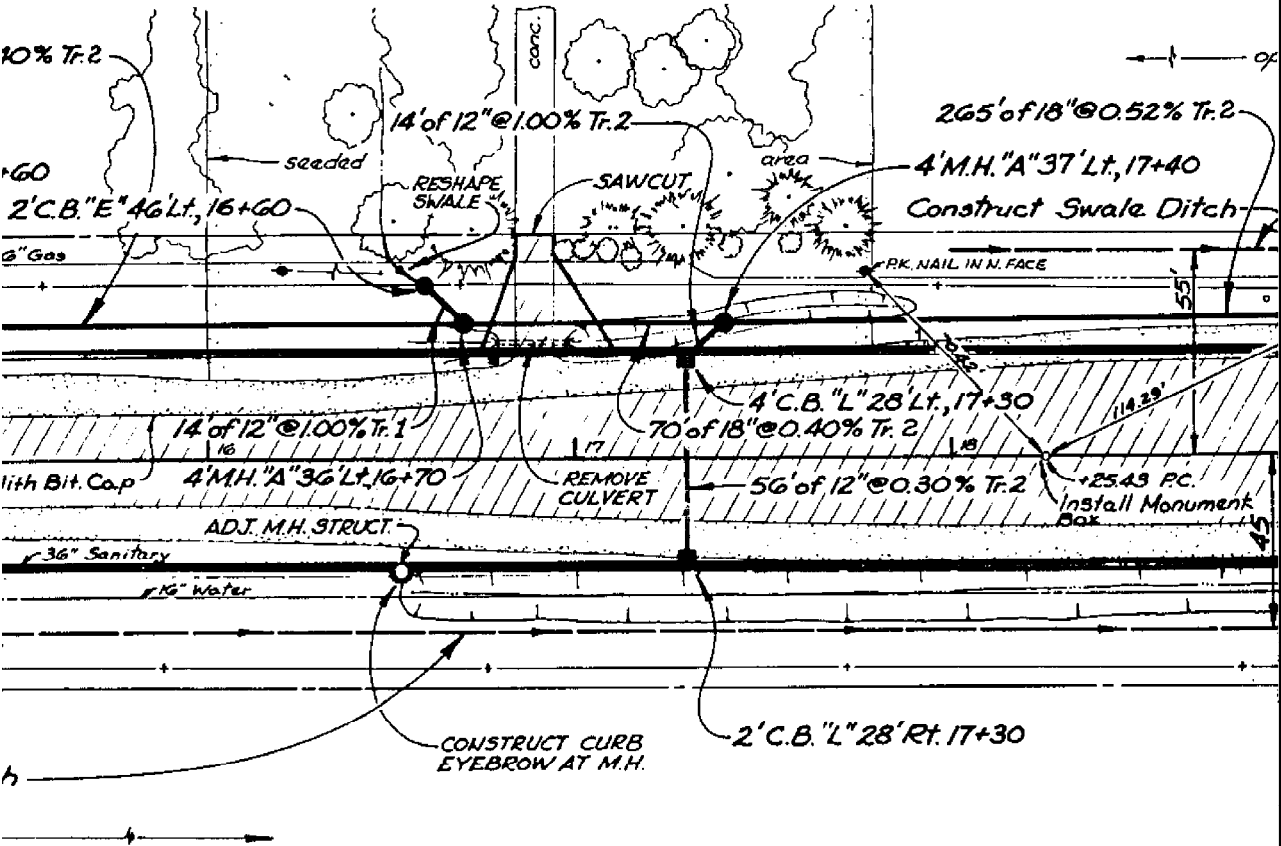
+72 8" Pine 62' Lt.

+77 D.E. Pole 50' Lt.

+91 Traffic sign 33' Lt.

+84 M.B.T. underground

RELOCATE



+53 Manhole 29' Rt.

+86 Traffic sign 28' Rt.

+25.43 P.K. nail on line
Point of Curvature

+75 Traffic sign 30' Rt.

16

17

18

Rim 601.52

Rim 600.16

Rim 601.02

0.33%

Sw

+53 Manht

+86 Traff

+25.43 /
Point

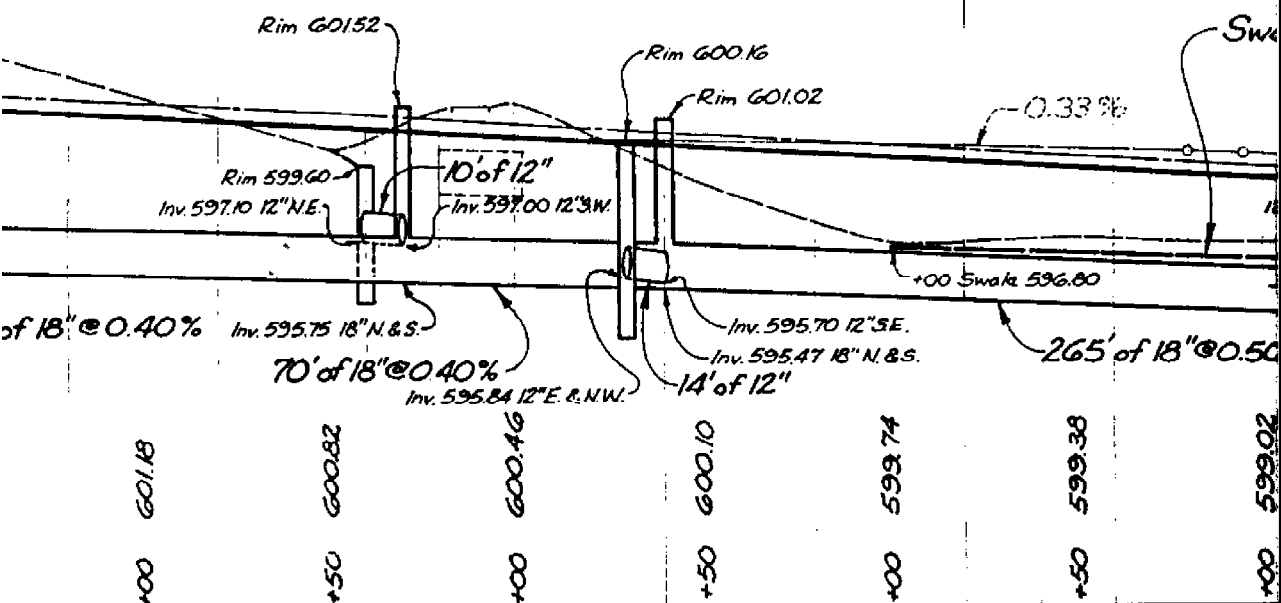
+73 Traff

16

17

18

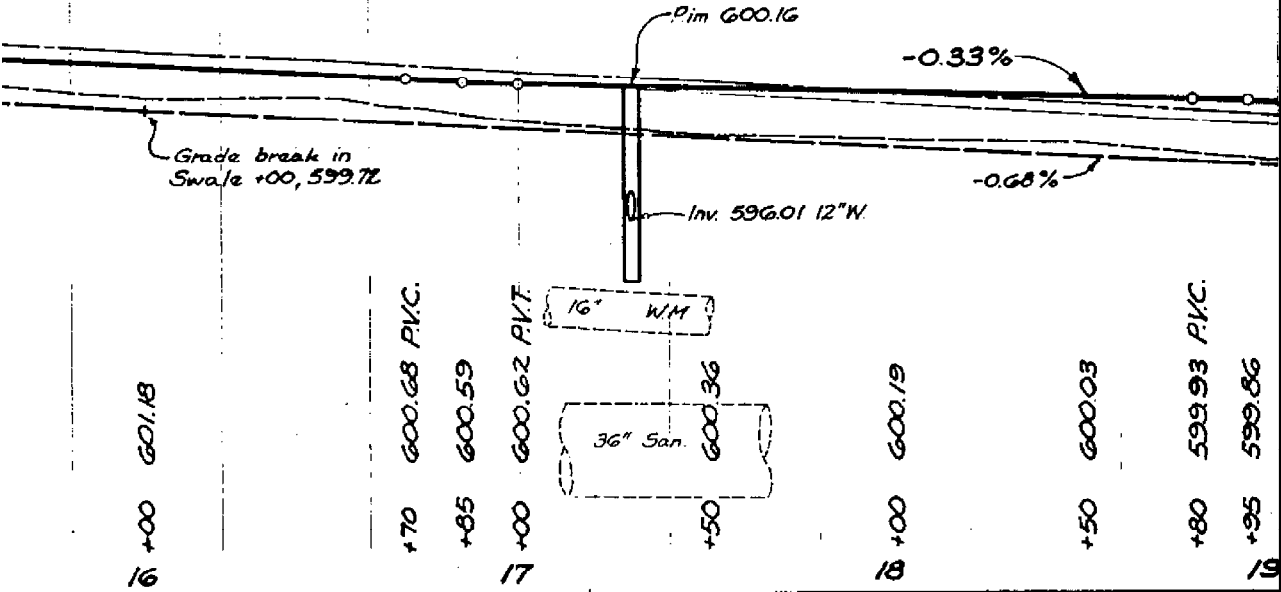
19



30' VC.
PI. STA. 16+85
PI. ELEV. 600.57
"e" = +0.02

30' VC.
PI. Sta. 17+85
PI. Elev. 599.93
"e" = -0.02

Swale Ditch @ 45' Rt.



PATE, HIRN & ROGUE, INC.
CIVIL ENGINEERS
17000 TWELVE MILE ROAD, SOUTHFIELD, MICH. 48076

JOB NO.
12850

AS COM

+84 M.B.T. underground marker 42' Lt.

+28 D.E. Pole 50' Lt.

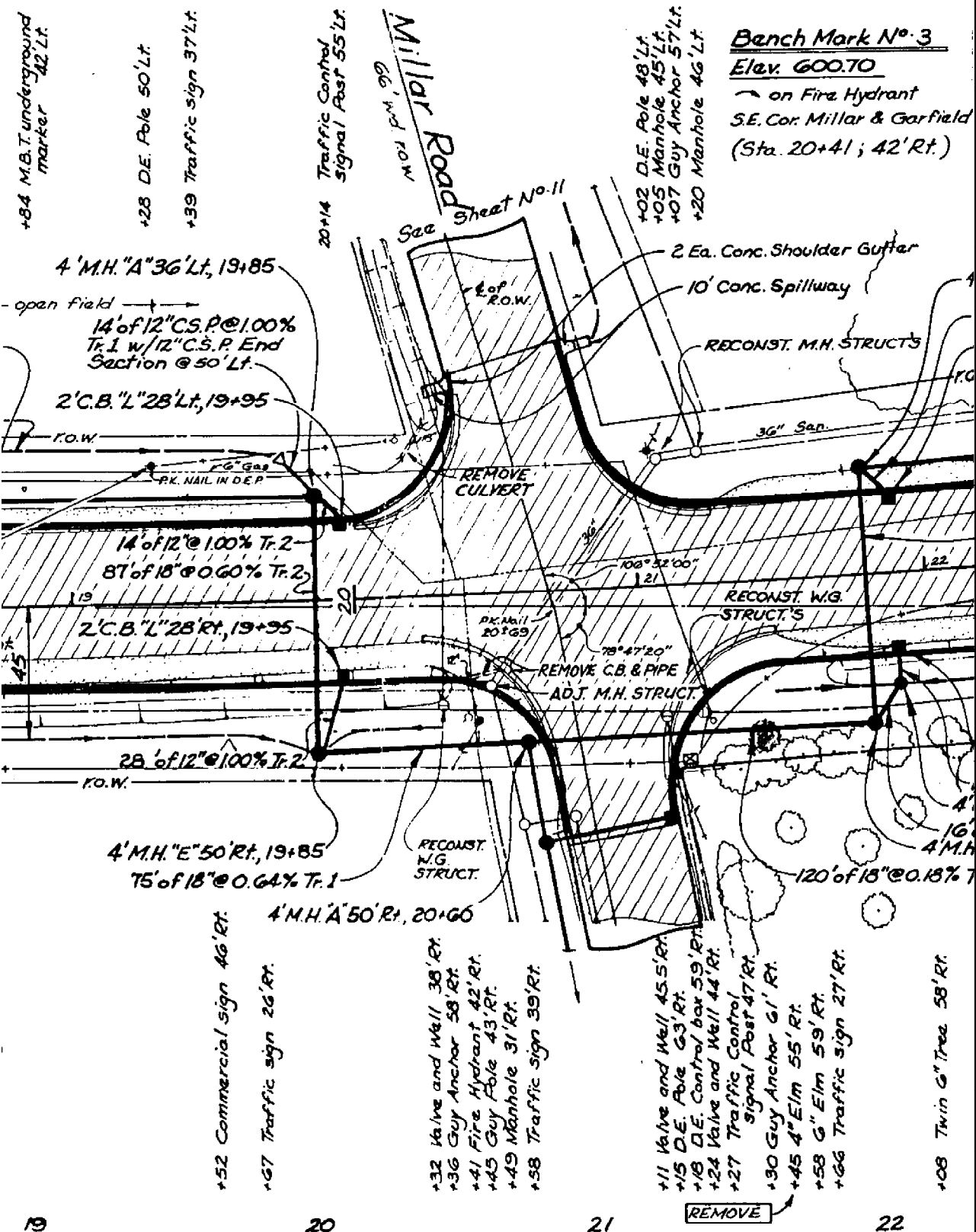
+39 Traffic sign 37' Lt.

20+14 Traffic Control signal Post 55' Lt.

+02 D.E. Pole 48' Lt.
+05 Manhole 45' Lt.
+07 Guy Anchor 57' Lt.
+20 Manhole 46' Lt.

Bench Mark No. 3
Elev. 600.70

on Fire Hydrant
S.E. Cor. Millar & Garfield
(Sta. 20+41 ; 42' Rt.)



+52 Commercial sign 46' Rt.

+67 Traffic sign 26' Rt.

+32 Valve and Well 36' Rt.
+36 Guy Anchor 58' Rt.
+41 Fire Hydrant 42' Rt.
+45 Guy Pole 43' Rt.
+49 Manhole 31' Rt.
+58 Traffic sign 39' Rt.

+11 Valve and Well 45.5' Rt.
+15 D.E. Pole 63' Rt.
+18 D.E. Control box 59' Rt.
+24 Valve and Well 44' Rt.
+27 Traffic Control signal Post 47' Rt.
+30 Guy Anchor 61' Rt.
+45 4\" Elm 55' Rt.
+58 6\" Elm 59' Rt.
+66 Traffic sign 27' Rt.

+08 Twin 6\" Trees 58' Rt.

19

20

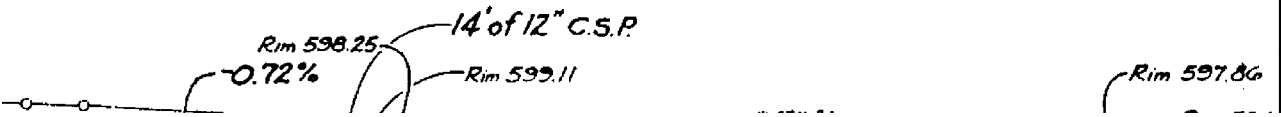
21

22

REMOVE

60' VC.
P.I. STA. 21+89
P.I. ELEV. 596.94
e'' = +0.11

Swale Ditch @ 55' Lt.



19
+52 Comm
+67 Traff

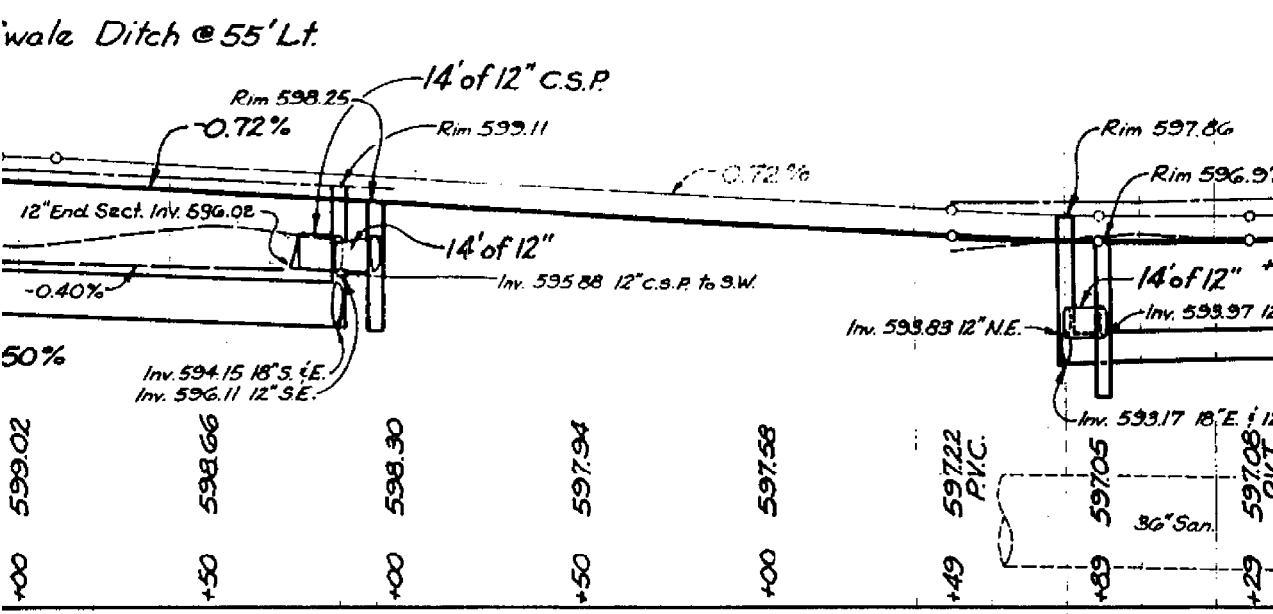
20
+32 Valve
+36 Guy A
+41 Fire H
+45 Guy F
+49 Manho
+58 Traff

21
+11 Valve
+15 D.E. P
+18 D.E. Co
+24 Valve
+27 Traff
+30 Guy A
+45 4" Elm
+58 6" Elm
+66 Traff

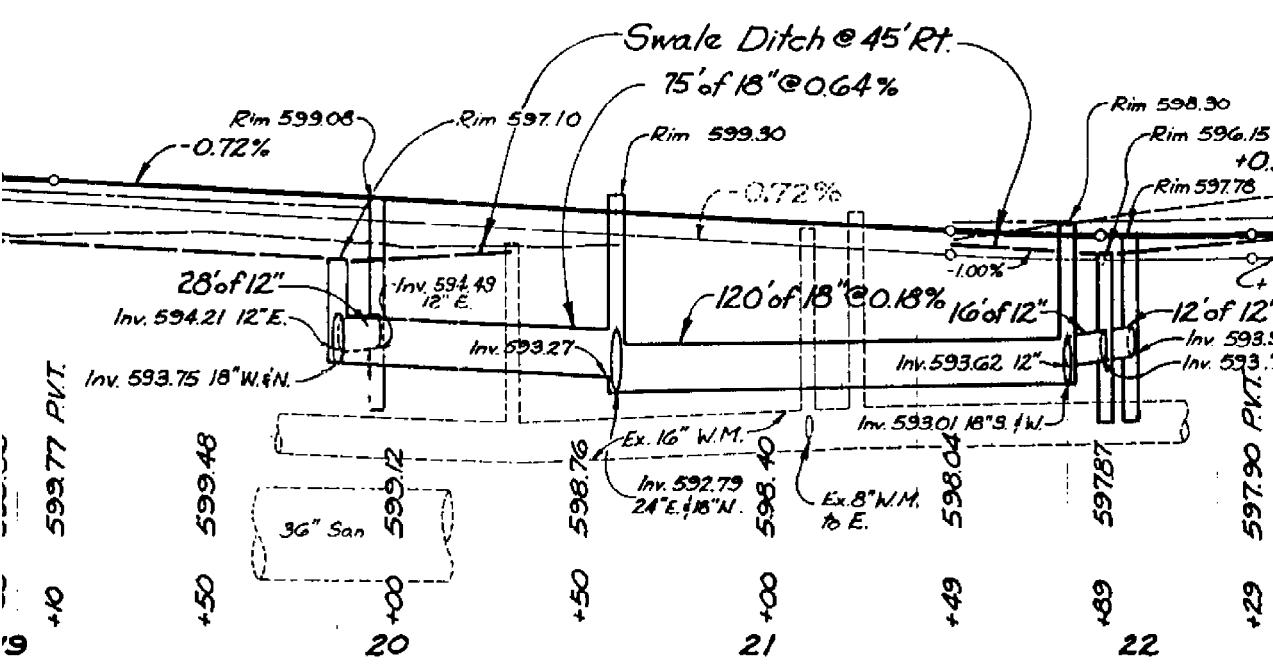
22
+08 Twin

REMOVE

60' V.C.
P.I. STA. 21+89
P.I. ELEV. 596.94
"e" = +0.11



60' V.C.
P.I. STA. 21+89
P.I. ELEV. 597.76
"e" = +0.11



CONST.	DATE	MDOT JOB NO. 23518	COUNTY PROJ.	MACOMB COUNTY ROAD COMMISSION	GARFIELD Plan
--------	------	-----------------------	--------------	----------------------------------	------------------

- +32 Valve
- +36 Guy A
- +41 Fire H
- +45 Guy F
- +49 Manho
- +58 Traff

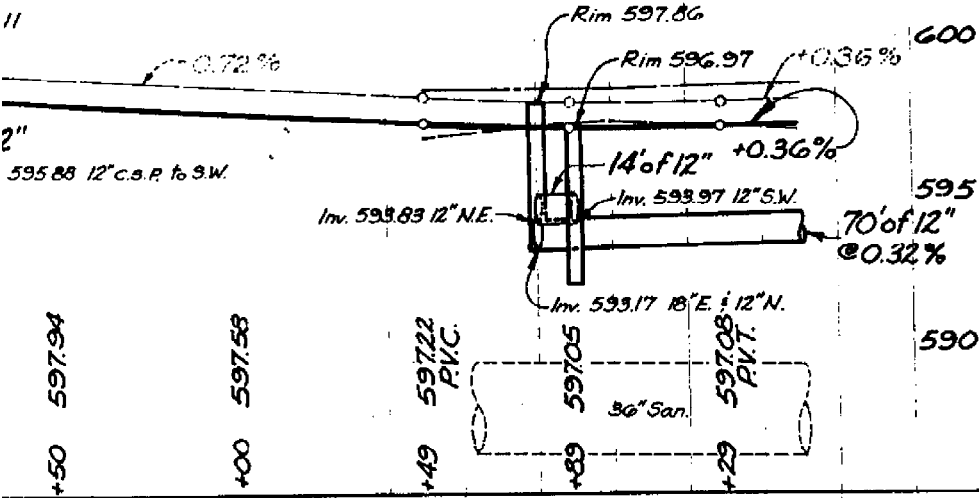
- +11 Valve
- +15 D.E. A
- +18 D.E. C
- +24 Valve
- +27 Traff
- +30 Guy A
- +45 4" El
- +58 6" E
- +66 Traff

- +08 Twin
- +27 Traff

21 REMOVE 22 +50

80' VC.
P.I. STA. 21+89
P.I. ELEV. 596.94
"e" = +0.11

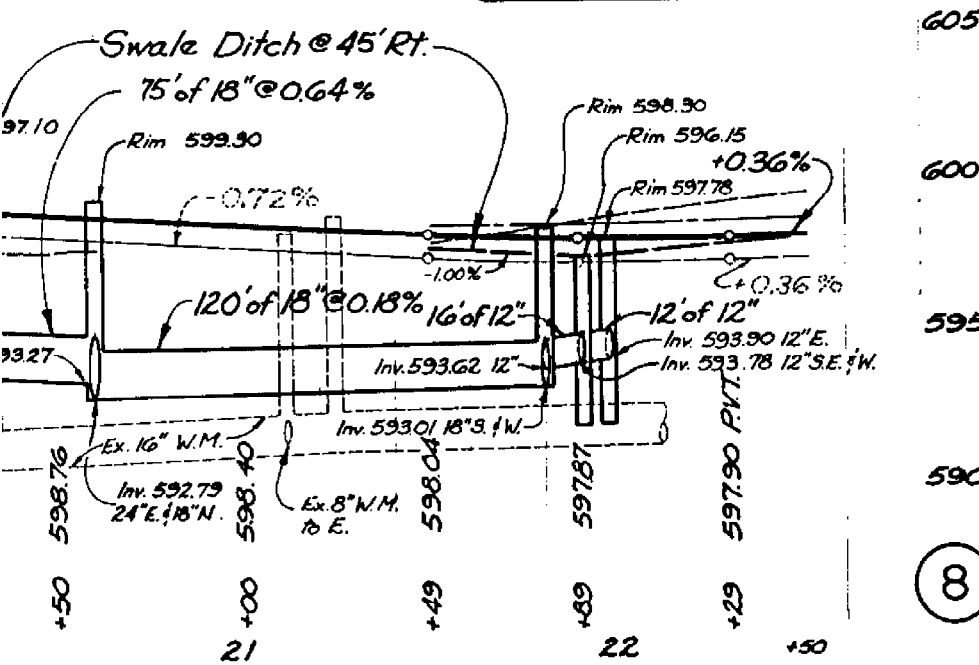
C.S.P.



605
600
595
590

Prop. Edge of Metal @ 27.5' Lt.
Existing Pavement & Profile
Existing Ground Profile @ 60' Lt.

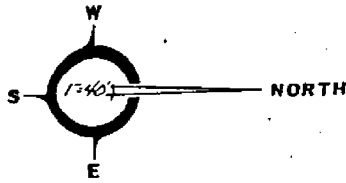
80' VC.
P.I. STA. 21+89
P.I. ELEV. 597.76
"e" = +0.11



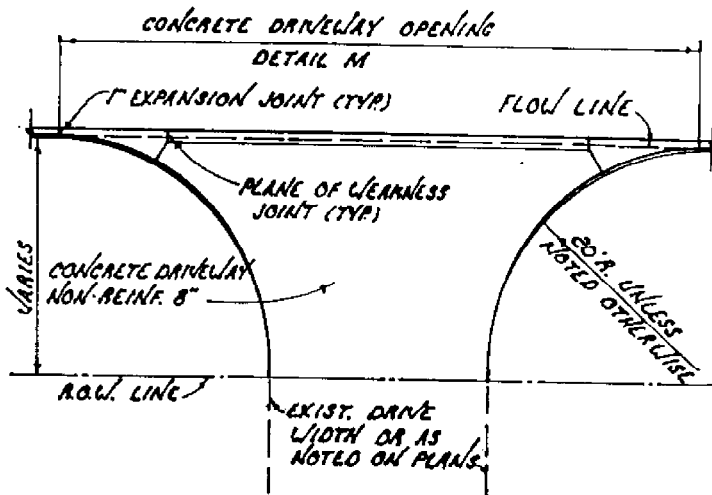
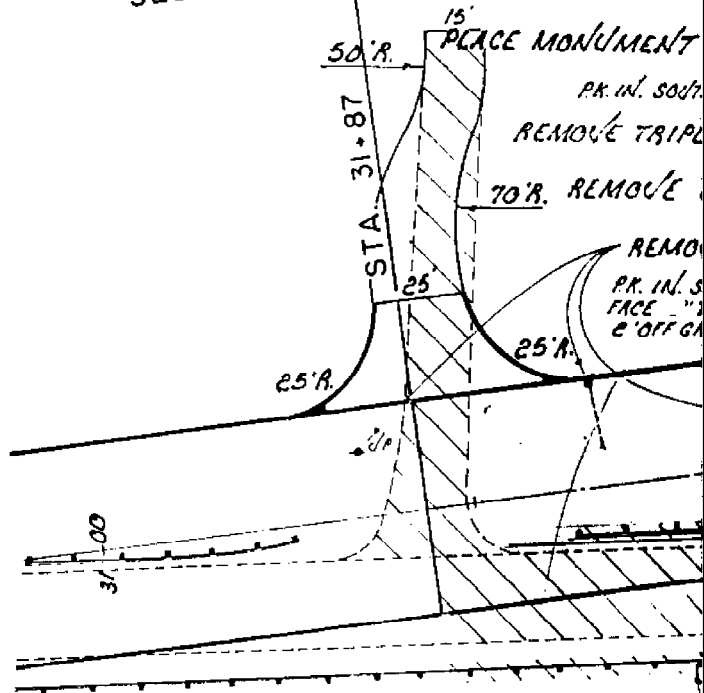
605
600
595
590

Prop. Edge of Metal @ 27.5' Rt.
Existing Pavement & Profile
Existing Ground Profile @ 60' Rt.

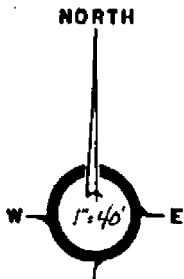
8



P.H.B. PLANS A.E.W. PLANS
SEE SHEET

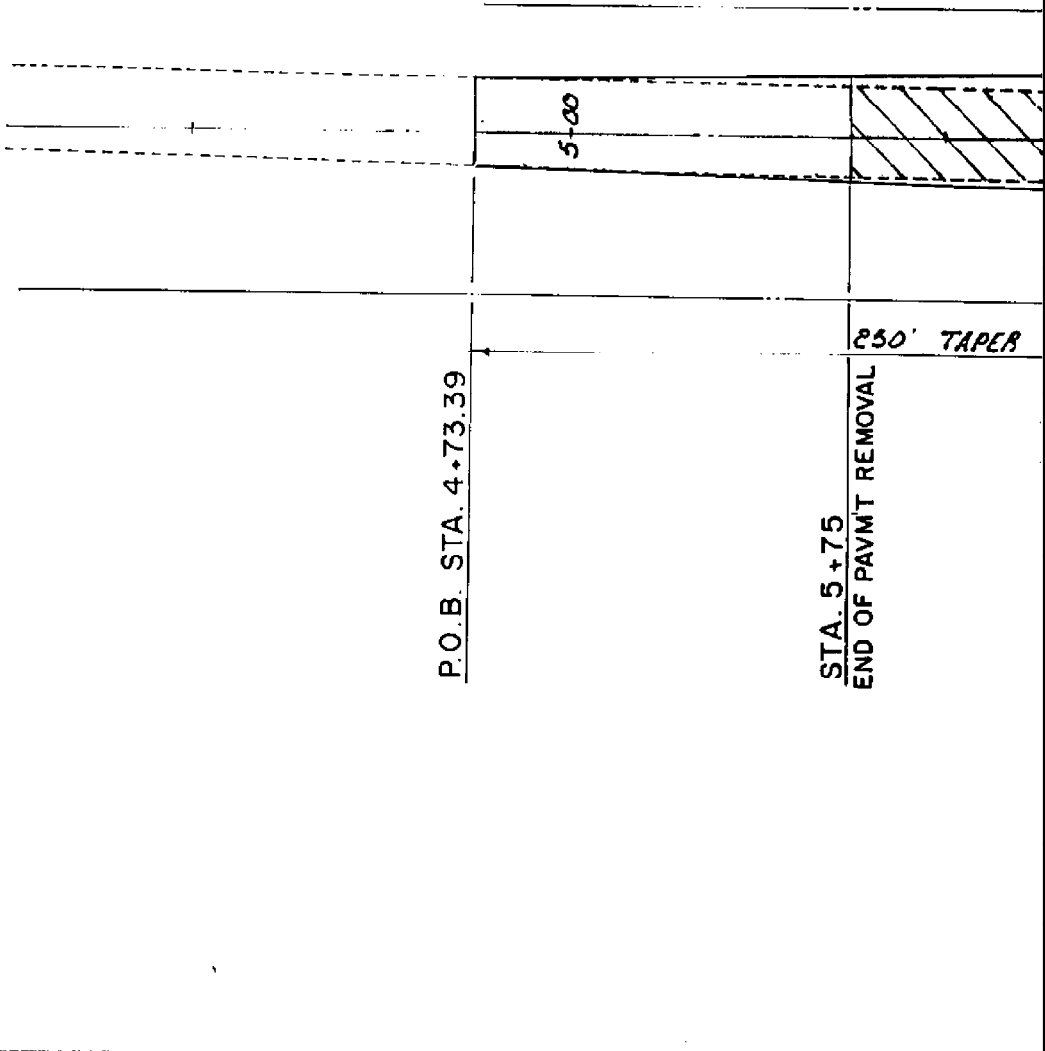
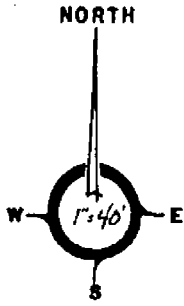


COMMERCIAL DRIVE DETAIL



WIDTH OR IS NOTED ON PLANS

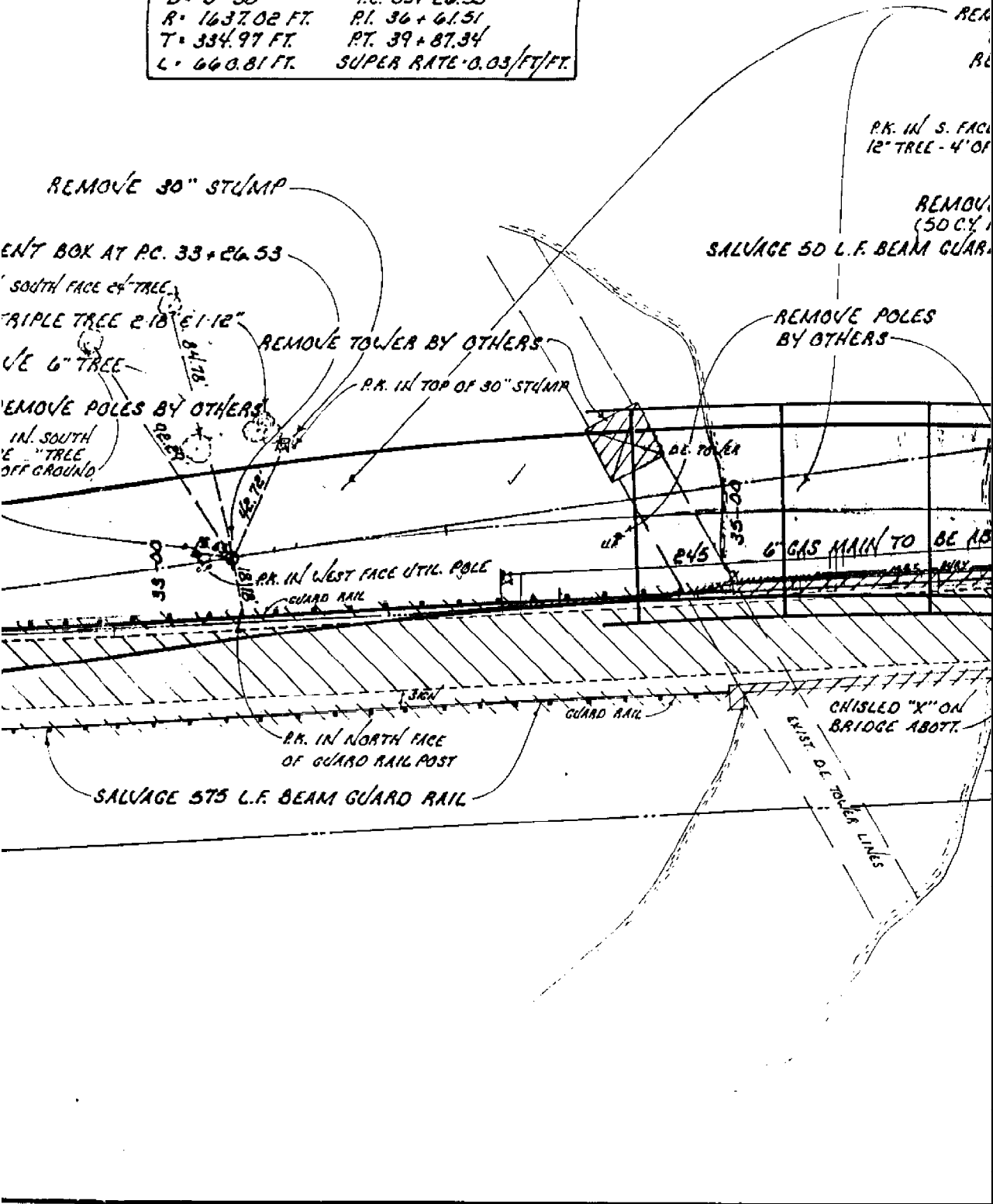
COMMERCIAL DRIVE DETAIL



REVISIONS	DATE	REMARKS	DATE	REMARKS
		5-7-85 P.A.S.	GAS & M.C.A.C. REG.	
	6-3-85 P.A.S.	STATE REG.		

48 HOURS BEFORE YOU DIG CALL MISS DIG
800-482-7771
 TOLL FREE

CURVE No. 2 DATA	
A: 23° 07' 42"	E: 33.92 FT.
D: 3° 30'	P.C. 33+26.53
R: 1637.02 FT.	P.I. 36+61.51
T: 334.97 FT.	P.T. 39+87.34
L: 660.81 FT.	SUPER RATE 0.03/FT/FT.



REMOVE 34'

CADILLAC MEMORIAL
GARDEN'S CEMETERY

REMOVE 397

CADILLAC MEMORIAL
GARDENS CEMETERY

R.P. 63' LT. 9+40.17

REMOVE POLE BY OTHERS



BEGIN CONC. PAVM'T
STA. 7+23.39

REMOVE MANHOLE & 230' SEWER
(80 C.Y. MISC. DRAINAGE-TYPE II.) R.P. 58' RT. 9+23.39

CONCRETE

CLINTON TOWNSHIP
FIRE STATION

GARFIELD ROAD over **THE CLINTON RIVER**
MACOMB COUNTY

ANDERS



REMOVE 4839 SQ. YDS. OF PAVEMENT (SPECIAL)

REMOVE 8 SQ. YDS. OF SIDEWALK

S.E. CORNER OF CONC.

P.K. IN S. FACE OF 12" TREE - 4' OFF GROUND

REMOVE C.B. & 120' SEWER (50 CY MISC. DRAINAGE TYPE II)

L.F. BEAM GUARD RAIL

CLINTON TOWNSHIP FIRE STATION

S.E. CORNER OF BUILDING

conc.

POLES BY OTHERS

R.P. 69' LT. 38+35.45

30'A

30'A

REMOVE POLES BY OTHERS

MAIN TO BE ADJUSTED

PAVEMENT "X" ON BRIDGE ABUTT.

25'A

20'A

MAIL BOX

20'B

REMOVE M.H.'S, C.B.'S & 215' SEWER (75 CY MISC. DRAINAGE TYPE II)

R.P. 69' RT. 38+44.95

RESURRECTION CEMETERY FLOWERS

REMOVE C.B.'S & 218' SEWER (75 CY MISC. DRAINAGE TYPE II)

30'

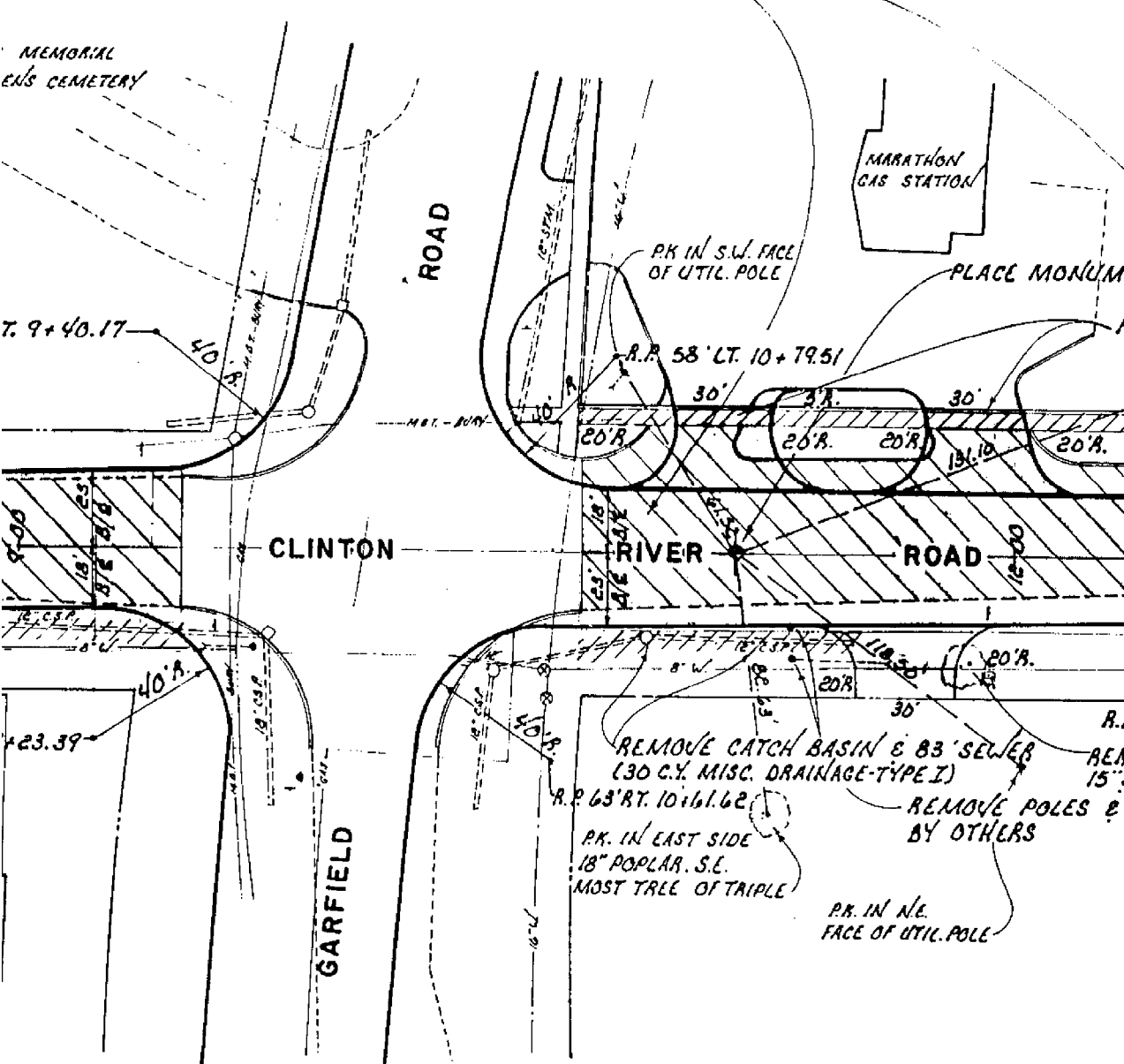
34'

REMOVE 3479 SQ. YDS. OF PAVEMENT (SPECIAL)

MEMORIAL CEMETERY

MARATHON GAS STATION

REMOVE 3479 SQ. YDS. OF PAVEMENT (SPECIAL)

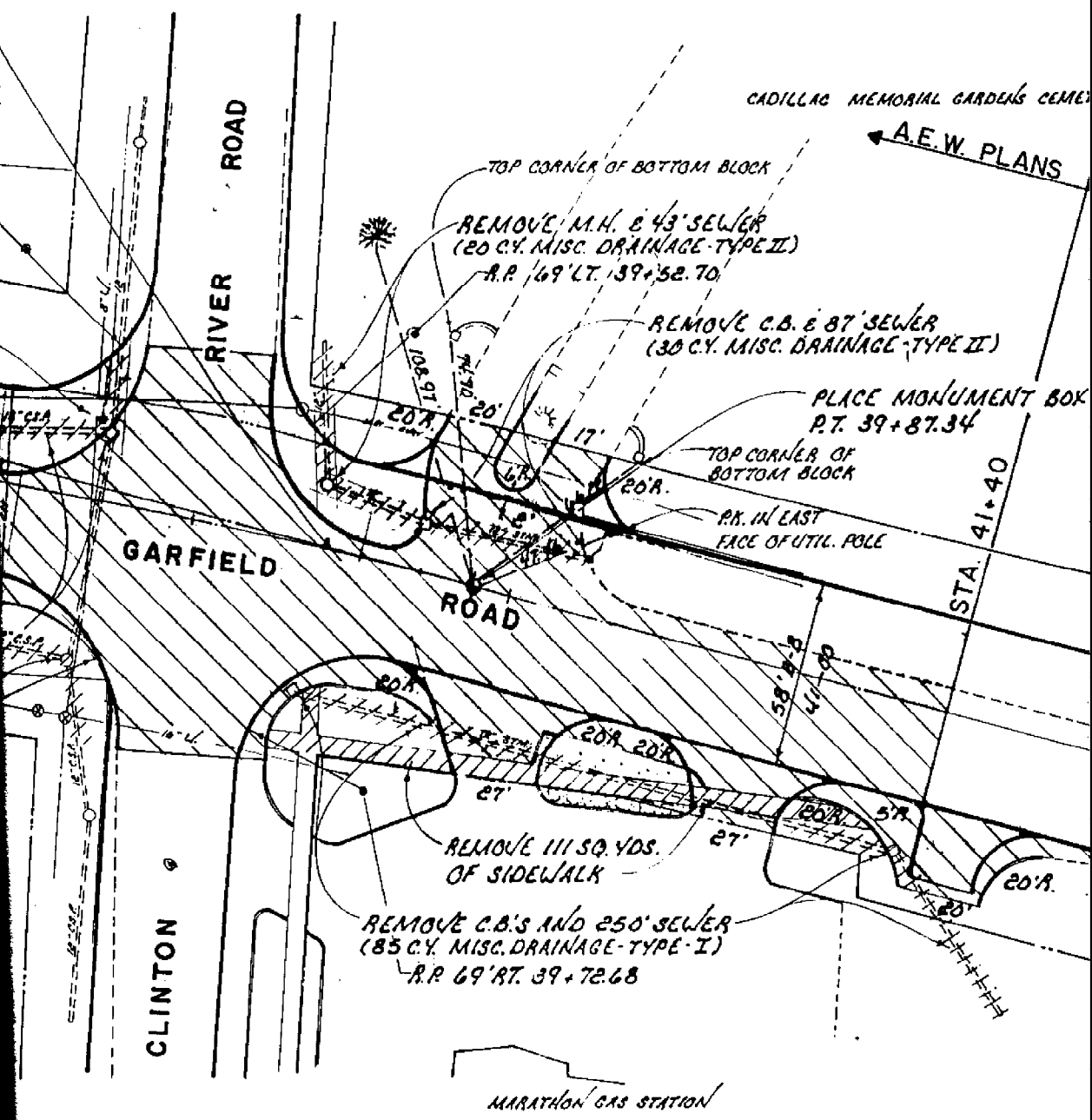


ANDERSON, ECKSTEIN AND WESTRICK INC.

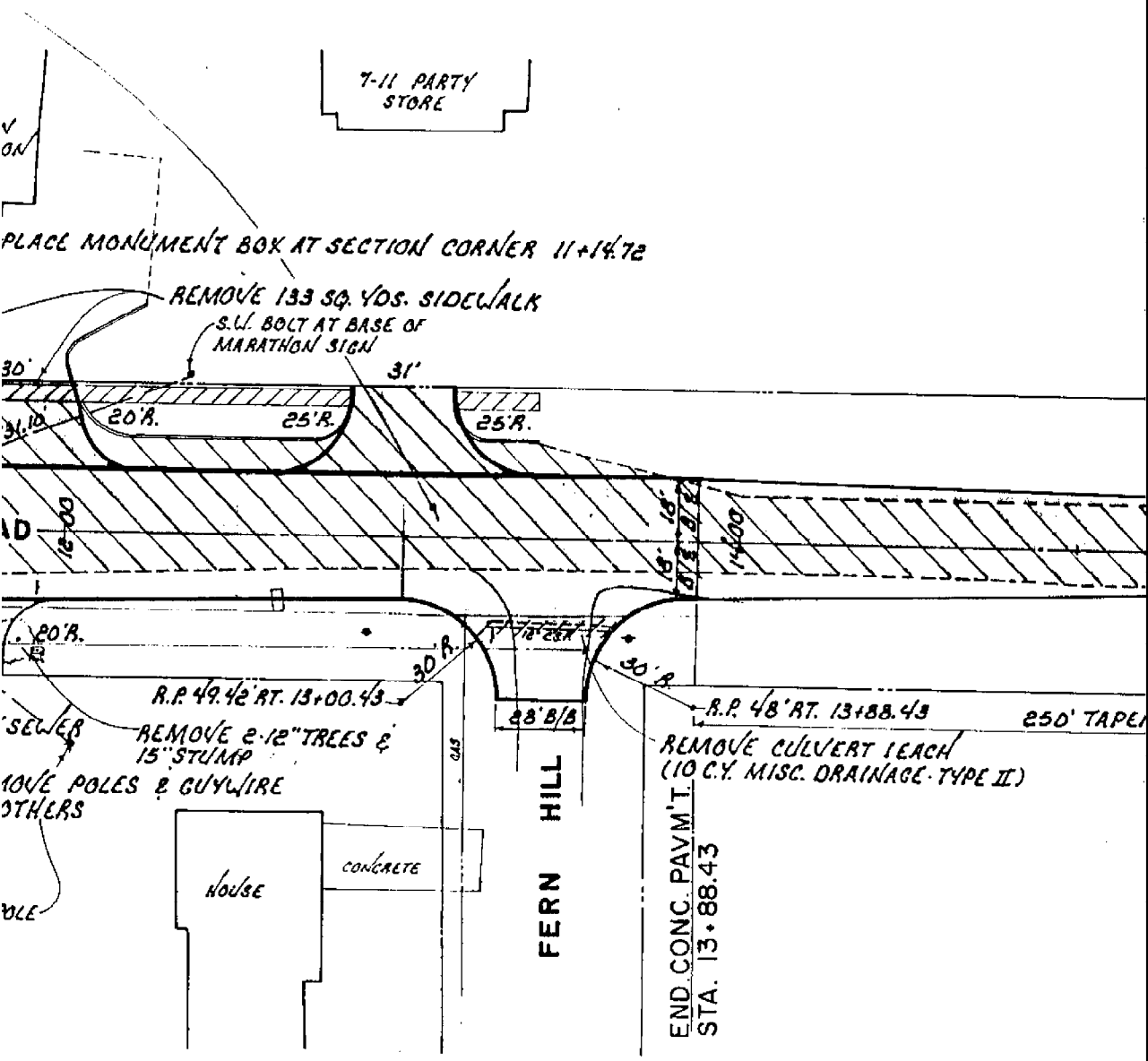


CIVIL ENGINEERS
 4260 GARFIELD ROAD
 MOUNT CLEMENS, MICHIGAN 48054
 PHONE (313) 285-1231

GEOMETRI



7-11 PARTY STORE



GEOMETRICS & REMOVAL PLAN

<input checked="" type="checkbox"/> PRELIMINARY	CLIENT MACOMB CO. ROAD C
<input type="checkbox"/> CONSTRUCTION	SCALE
<input type="checkbox"/> AS-BUILT	1" = 40'

CADILLAC MEMORIAL GARDENS CEMETERY

← A.E.W. PLANS

→ P.H.B. PLANS
SEE SHEET*

OF BOTTOM BLOCK

4" & 43" SEWER
(DRAINAGE-TYPE II)
P.T. 39+52.70

REMOVE C.B. & 87" SEWER
(30 CY. MISC. DRAINAGE-TYPE II)

PLACE MONUMENT BOX AT
P.T. 39+87.34

TOP CORNER OF
BOTTOM BLOCK

20' R.

P.R. IN LAST
FACE OF UTIL. POLE

STA. 41+40

58' 8" S
41' 0" S

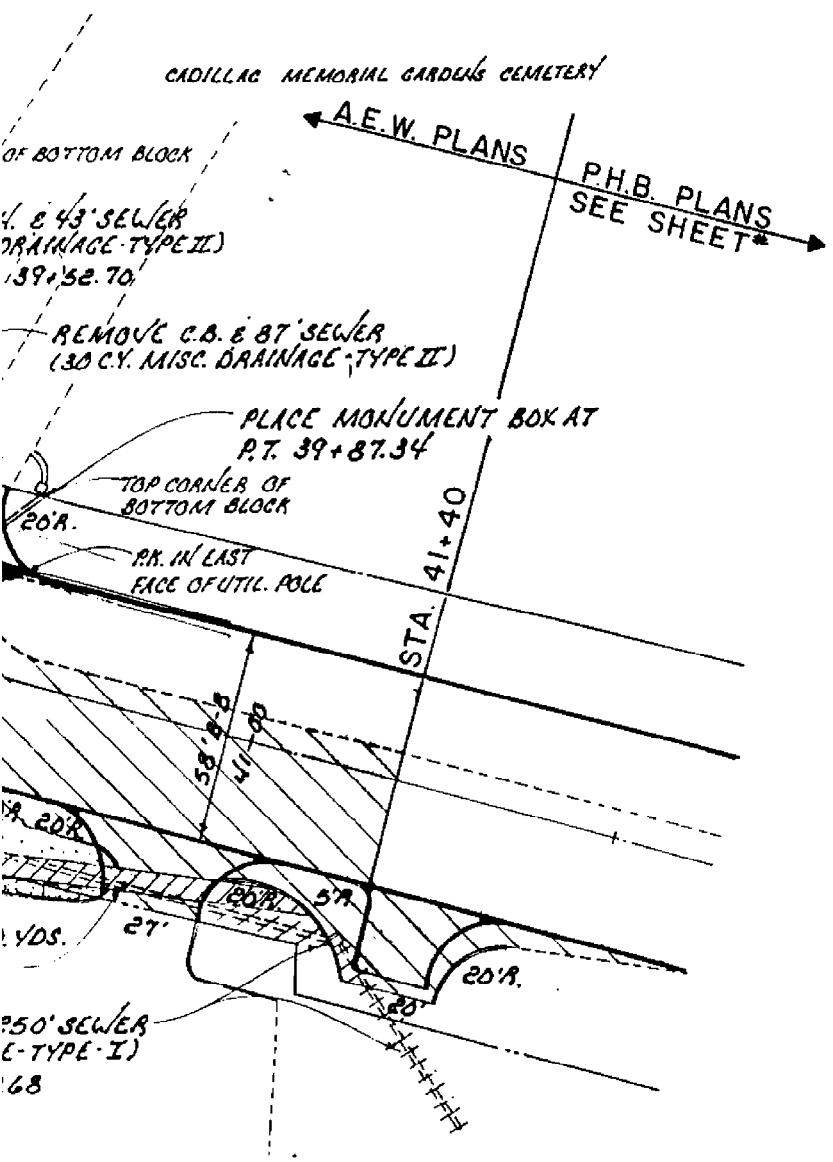
20' R.
VDS. 27'

5' R.

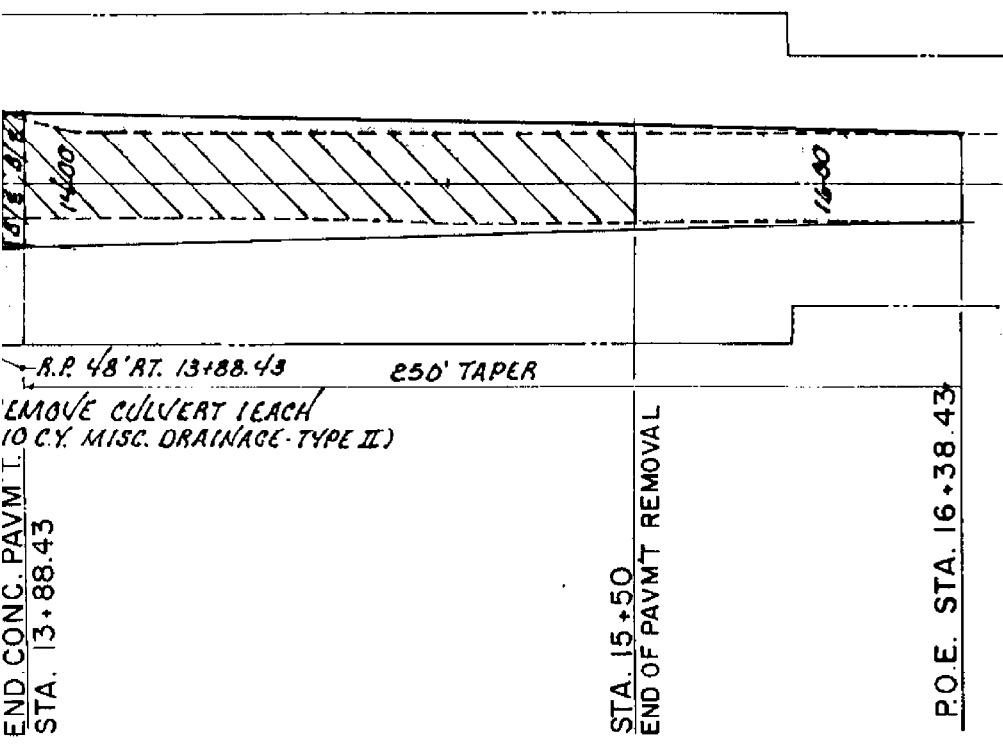
20' R.

150' SEWER
(TYPE I)
68

AS STATION



AS STATION



47

<input checked="" type="checkbox"/> PRELIMINARY	CLIENT MACOMB CO. ROAD COMM.	DATE FEBRUARY 1985	PROJECT NO. 23008
<input type="checkbox"/> CONSTRUCTION	SCALE 1"=40'	DRAWN BY R.A.S.	SHEET NO. R-4
<input type="checkbox"/> AS - BUILT		CHECKED BY	