

LAND CORNER RECORDATION CERTIFICATE
Filing Requirement of Act 74, Mich. P.A. 1970

C152276
 94 DEC 14 AM 10:55

CARE
 RECD
 MAIL
 CLINTON
 RECORDS
 DEPT
 LANSING, MI

LIBER 6527 PAGE 853

Register of Deeds Stamp & File Number

or corners in

MACOMB
 (County)

Located In: **CLINTON** Corner Code # _____

Public Land Survey T 2N R 13E B-13

Property Controlling in Section _____

Miscellaneous _____

Property in Sec. _____

Lot No. _____, Recorded Plat _____

Private Claims _____

STEVEN E. DUNN, in a field survey on MARCH 20, 19 94, hereby certify that under requirements of P.A. 74, Michigan P.A. of 1970, the corner points mentioned in lines 1 and 2 above were in conformance with regulations and rules therefore required in the current manual of survey instructions of the United States Department of the Interior, Bureau of Land Management or by a decree of a Court of Law and/or that the corner points mentioned in lines 3, 4 and 5 above were in conformance with the rules of the Michigan Board of Land Surveyors or by a Decree of a Court of Law; established, re-established, monumented, re-monumented, recovered, found as expressed below:

NOTE: Not more than 4 corners, all in the same town and range, may be recorded on this certificate.

Description of original monument and accessories and/or subsequent restoration:
 GLO POST - NO EVIDENCE OF ORIGINAL CORNER FOUND
 GLO ORIGINAL SURVEY PERFORMED BY PRESTON 2-18-1818

L.C.R.C.	NAME AND NUMBER	DESCRIPTION	DATE
L. 5525 P. 750	WILLIAM J. COULTER, #14760	FOUND 1/2" ROD IN MONUMENT BOX	AUGUST 5, 1992
L. 5665 P. 299	GERALD L. LANDWEHR, #10065	FOUND 1/2" REROD IN MONUMENT BOX	DECEMBER 1, 1992
PLATS			
L. 014 P. 027	ASSESSOR'S PLAT NO. 3	MARCH 20, 1930	
L. 98 P. 40-41	BORIS PARK SUBDIVISION	DECEMBER 1992	
L. 100 P. 1-7	HARRINGTON ESTATES SUBDIVISION	APRIL 1993	

Description of corner evidence found and/or method applied in restoring or reestablishing corner:
 B-13 1/4 CORNER COMMON TO B-1 ERINLAKE TOWNSHIP

FOUND 1/2" IRON ROD IN MONUMENT BOX IN CONCRETE PAVEMENT.
 VERIFIED LOCATION BY COMPARING FOUND WITNESS TIES OF L.C.R.C. LISTED BELOW AND COMPARING DISTANCE FROM B-13 TO A-13 OF PLATS BORIS PARK SUB AND HARRINGTON ESTATES SUB AND DISTANCE FROM B-13 TO C-13 OF ASSESSOR'S PLAT NO. 3.

FOUND WITNESS TIES
 L. 5525 P. 750 NE 105.92' PK. NAIL IN 18" POPLAR
 L. 5665 P. 299 S.06°W. 31.82' PK NAIL IN WEST FACE OF 36" WILLOW TREE

FIELD MEASUREMENTS AND RECORDED DISTANCES
 B-13 TO A-13 2672.57' (M.) 2672.72' (R) HARRINGTON ESTATES SUBDIVISION AND BORIS PARK SUBDIVISION 2640.00' G.L.O. (R.)
 B-13 TO C-13 2697.74' (M.) 2697.50' (R) ASSESSOR'S PLAT NO. 3 2640.00' G.L.O. (R.)

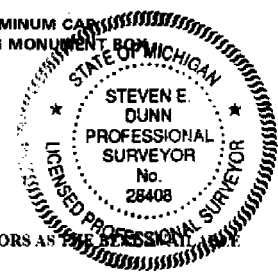
Description of monument for corner and accessories established to perpetuate locating the position of the corner:

B-13 T.2N., R.13E. I REPLACED 1/2" IRON ROD WITH A 3/4" x 24" IRON ROD WITH 2" DIAMETER ALUMINUM CAP AND STAMPED "MACOMB COUNTY MONUMENT MI. ACT 345 #28408" IN AN EXISTING MONUMENT BOX IN CONCRETE PAVEMENT.

WITNESSES
 N.58°E. 105.69' FOUND PK NAIL IN WEST FACE OF 26" ELM.
 N.59°E. 89.08' TOP CENTER NUT ON HYDRANT.
 S.06°W. 31.82' FOUND PK NAIL AND TAG IN WEST FACE OF MULTIPLE STEM WILLOW.
 S.14°E. 53.70' FOUND PK NAIL AND TAG IN WEST FACE OF UTILITY POLE.

THE SELECTED LOCATION IS ACCEPTED BY ME AND IS GENERALLY ACCEPTED BY PROFESSIONAL SURVEYORS AS EVIDENCE OF THE POSITION OF THE ORIGINAL CORNER

Signed by Steven E. Dunn Date Nov. 9, 1994
 Surveyor's Michigan License No. 28408



	A	B	C	D	E	F	G	H	I	J	K	L	M
2	6	5				4				3			2
3													
4	7	8				9				10			11
5													
6	18	17				16				15			14
7													
8	18	20				21				22			23
9													
10	30	28				28				27			26
11													
12	31	32				33				34			35
13													

ACCEPTED BY THE MACOMB COUNTY SURVEY PEER GROUP AS THE OFFICIAL CORNER UNDER MICHIGAN PUBLIC ACT 345 OF 1990 AT A MEETING HELD ON 11-21-94
William E. Soderberg
 WILLIAM E. SODERBERG, P.S., CHAIRMAN

HARRINGTON ESTATES SUBDIVISION

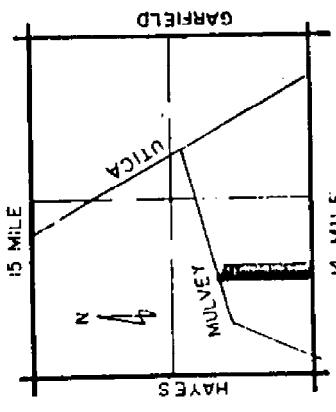
PART OF THE SOUTHWEST 1/4 OF SECTION 31, T. 2N., R. 13E.,
CITY OF FRASER, MACOMB COUNTY, MICHIGAN.

MATCH LINE



PLAT LEGEND

ALL DIMENSIONS ARE IN FEET
ALL CURVILINEAR DIMENSIONS ARE SHOWN ALONG THE ARC
(R) DENOTES RADIAL (NR.) DENOTES NOT RADIAL
THE SYMBOL "G" DENOTES A MONUMENT WHICH IS A 1/2" DIAMETER
STEEL BAR 36" LONG, ENCASED IN 4" DIAMETER CONCRETE.
ALL LOT MARKERS ARE 1/2" IRON PIPES AND ARE 18" LONG
ALL BEARINGS ARE IN RELATION TO THE BEARING OF THE SOUTH LINE OF
SECTION 31 T.2N. R.13E. (AS RECORDED IN LIBER 4228 PAGE 705-707)
MACOMB COUNTY ROAD COMMISSION DRAWING No. 1433



LOCATION MAP
NO SCALE

EXAMINED AND APPROVED
April 26, 1993
BY THE DEPARTMENT
OF COMMERCE
Richard L. James
REGISTERED PROFESSIONAL SURVEYOR
MICHIGAN, P.L.S.

NOTE:
THERE SHALL BE NO DIRECT

UNPLATTED

62.00	DRAINAGE	N. 87° 34' 45" E. 149.58	62.00
62.00	SURFACE	N. 87° 34' 45" E. 149.58	62.00
62.00	UTIL. AND	N. 87° 34' 45" E. 149.58	62.00
62.00	PUB. UTILITIES	N. 87° 34' 45" E. 149.58	62.00
62.00	PUB.	N. 87° 34' 45" E. 149.58	62.00
62.00	FOR	N. 87° 34' 45" E. 149.58	62.00
62.00	FOR	N. 87° 34' 45" E. 149.58	62.00
62.00	FOR	N. 87° 34' 45" E. 149.58	62.00
62.00	FOR	N. 87° 34' 45" E. 149.58	62.00

N. 02° 25' 15" W. 1002.05' N. 02° 25' 15" W. 878.78'

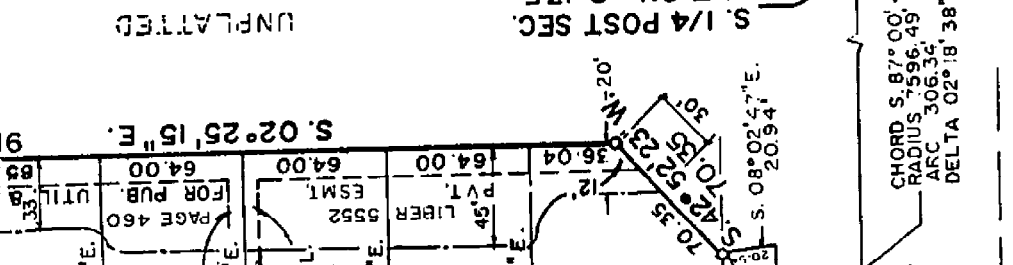
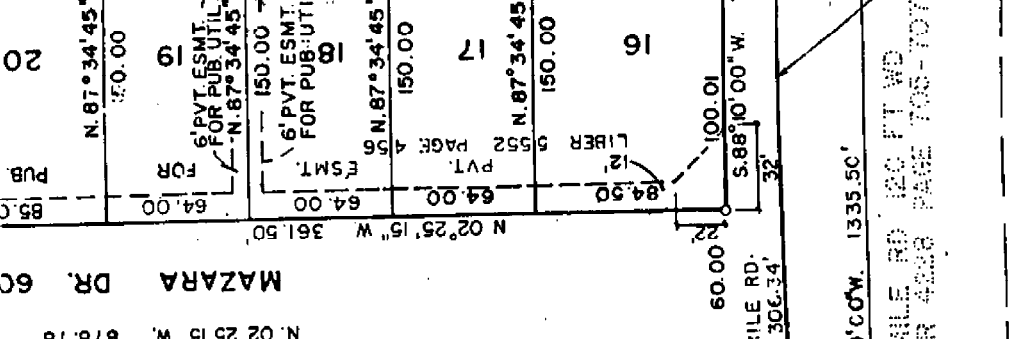
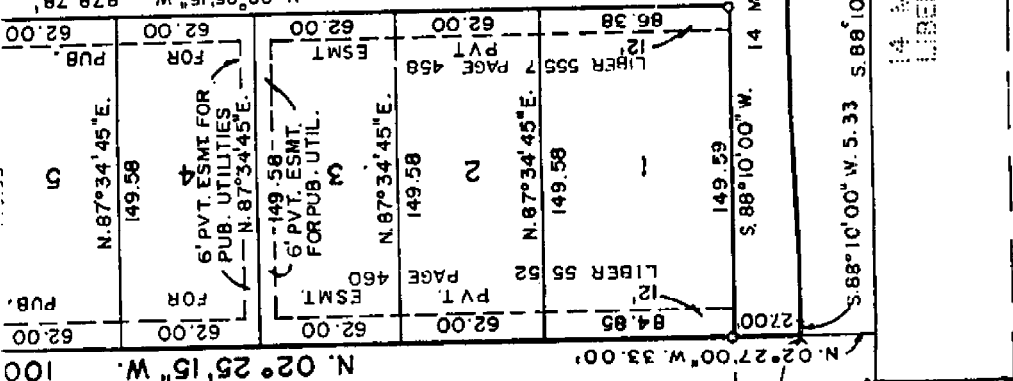
By *Richard L. James*
 Richard L. James, P.L.S.
 Surveyor, Prof. No. 1000

NOTE:
 THERE SHALL BE NO DIRECT
 VEHICULAR ACCESS TO 14
 MILE RD. FROM LOTS 1 & 16

S.W. COR. SEC. 31
 T. 2N; R. 13E.
 RECORDED
 LIBER 5665
 PAGE 299
 MACOMB COUNTY RECORDS

UNPLATTED

S. 88° 10' 00" W. 1337.22'
 SOUTH LINE OF SEC. 31
 P.O.B.



UNPLATTED

S. 1/4 POST SEC.
 T. 2N; R. 13E.
 RECORDED
 LIBER 5665
 PAGE 299
 MACOMB COUNTY RECORDS

S. 88° 10' 00" W. 1337.22'

SOUTH LINE OF SEC. 31

14 MILE RD 120 FT WD
 LIBER 4228 PAGE 705-707

CHORD S. 87° 00' 41" W. 309.32'
 RADIUS 7596.49
 ARC 306.34'
 DELTA 02° 18' 38"

DANNA MAURO & ASSOC.
 ARCHITECTS ENGINEERS
 CLINTON TWN. MI 48038

BORIS PARK SUBDIVISION

PART OF THE N.W. 1/4 OF SECTION 6 T.1N., R.13E.
CITY OF FRASER, MACOMB COUNTY, MICHIGAN

LIBER 98 PAGE 40

Register # B 817438



SHEET 1 OF 2 SHEETS

N 1/4 COR SEC. 6
L.C.P.R. 13E.
L. 4583, P. 440

N 89° 35' 15" W
1335.00

N.W. CORNER
SECTION 6
T.1N., R.13E.
L.C.P.R. 13E.
5292, P. 724

UNPLATTED

S 89° 35' 15" E 532.32
NORTH LINE SECTION 6

1/2 FOURTEEN MILE ROAD 60 FT. WD.

POINT OF BEGINNING

N 89° 35' 15" W
805.40

BORIS PARK

FLOOD PLAIN AS ESTABLISHED BY THE
DEPARTMENT OF NATURAL RESOURCES
ELEVATION 608.80 (IN G.C. DATUM)

N 89° 51' 00" W 521.50

PVT. ESMT. FOR PUB. UTIL.
PVT. ESMT. FOR PUB. UTIL.
PVT. ESMT. FOR PUB. UTIL.

N 00° 03' 31" E
150.00

FLOOD PLAIN AREA
S 56° 1' 40" W 259.38
E OF HARRINGTON
COUNTY DRAIN

PVT. ESMT. FOR
HARRINGTON DRAIN

S' PVT. ESMT. FOR PUB. UTIL.

N 89° 35' 15" W 531.82

531.82

532.32

200

N 89° 35' 15" W
1335.00

N.W. CORNER
SECTION 6
T.1N., R.13E.
L.C.P.R. 13E.
5292, P. 724

UNPLATTED

S 89° 35' 15" E 532.32
NORTH LINE SECTION 6

1/2 FOURTEEN MILE ROAD 60 FT. WD.

POINT OF BEGINNING

N 89° 35' 15" W
805.40

BORIS PARK

FLOOD PLAIN AS ESTABLISHED BY THE
DEPARTMENT OF NATURAL RESOURCES
ELEVATION 608.80 (IN G.C. DATUM)

N 89° 51' 00" W 521.50

PVT. ESMT. FOR PUB. UTIL.
PVT. ESMT. FOR PUB. UTIL.
PVT. ESMT. FOR PUB. UTIL.

N 00° 03' 31" E
150.00

FLOOD PLAIN AREA
S 56° 1' 40" W 259.38
E OF HARRINGTON
COUNTY DRAIN

PVT. ESMT. FOR
HARRINGTON DRAIN

S' PVT. ESMT. FOR PUB. UTIL.

N 89° 35' 15" W 531.82

531.82

532.32

200

ASSESSOR'S PLAT No. 3
VILLAGE OF FRASER,
MACOMB COUNTY, MICHIGAN.

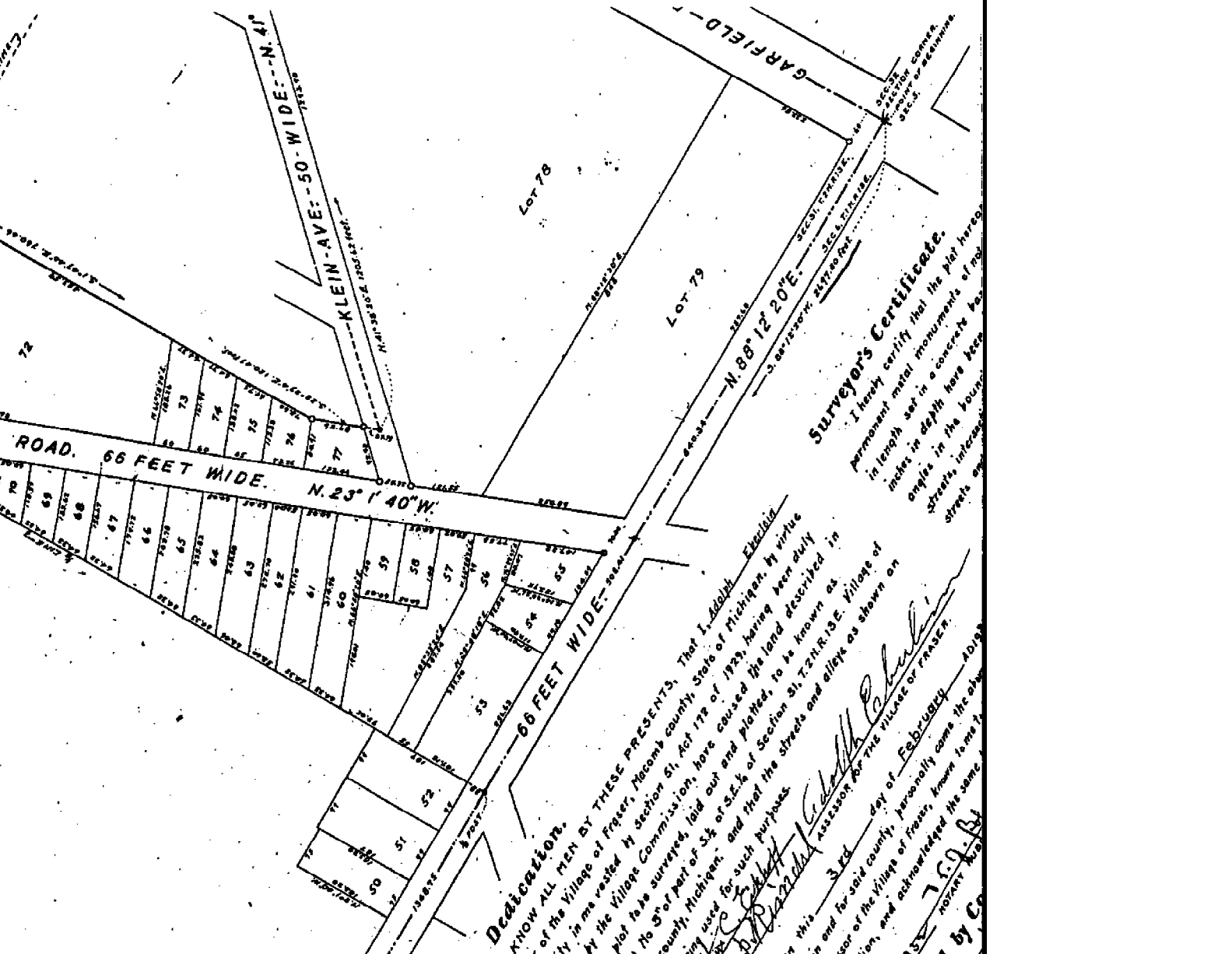
of Land Platted.
 in the annexed plat of Assessor's Plat No. 3 of part
 of Section 31, T.2N.R.13E. Village of Fraser, Macomb County,
 Michigan Meridian: Thence S. 89°12'20"W. along
 2497.50 feet to quarter post; Thence N. 27°20'00"
 to one-eighth post; Thence N. 89°53'42"E. along
 Thence N. 4°13'30"E. along said center line
 .31; Thence N. 89°53'42"E. 4495 feet to one-eighth
 .31; Thence S. 145°34'00"E. along said east

Approval.
 of the village of Fraser of
Wm. R. ...
 VILLAGE CLERK

Dedication.

KNOW ALL MEN BY THESE PRESENTS, That I, Adolph Ebenlin
 Assessor of the Village of Fraser, Macomb County, State of Michigan, by virtue
 of authority in me vested by section 51, Act 179 of 1929, having been duly
 authorized by the Village Commission, have caused the land described in
 the annexed plat to be surveyed, laid out and platted, to be known as
 "Assessor's Plat No. 3" of part of S. 34 of S. E. 1/4 of Section 31, T.2N.R.13E. Village of
 Fraser, Macomb County, Michigan; and that the streets and alleys as shown on
 said plat are now being used for such purposes
 WITNESSES
 STATE OF MICHIGAN,)
 COUNTY OF MACOMB,)
 before me, a Notary Public in and for said county, personally came the above
 named Adolph Ebenlin
 who executed the above dedication, and acknowledged the same
 and acted as such Assessor.
 My commission expires Aug 1-1935
 This plat was approved on the 3rd day of February 1935
 by commission expires Aug 1-1935
 ROBERT ...

Surveyor's Certificate.
 I hereby certify that the plat hereto
 in length set in a concrete base
 inches in depth here kept
 angles in the boundary
 streets, intersecting
 streets and



LAND CORNER RECORDATION CERTIFICATE
Filing Requirement of Act 74, Mich. P.A. 1970

RECORDED IN MACOMB COUNTY
RECORDS AT: 3:41 P. M.

DEC - 1 1992

Edna H. Miller
CLERK - REGISTER OF DEEDS
MACOMB COUNTY, MICHIGAN

Register of Deeds Stamp & File Number

For corners in

Macomb
(County)

Located In:	Corner Code #
City of Fraser,	Sec. 31
T 2 R 13 E.	A-13
T 2 R 13 E.	B-13
T R	
T R	
S T R	
S T R	
S T R	
S T R	

1. Public Land Survey

2. Property Controlling
In Section

3. Miscellaneous
Property in Sec.

4. Lot No. _____ Recorded Plat _____

5. Private Claims _____

	A	B	C	D	E	F	G	H	I	J	K	L	M
2	6	5	4	3	2	1							
3													
4	7	8	9	10	11	12							
5													
6	16	17	18	19	20	21	22	23	24				
7													
8	19	20	21	22	23	24							
9													
10	30	29	28	27	26	25							
11													
12	31	32	33	34	35	36							
13													

I, Gerald J. Landwehr, in a field survey on November 27, 19 92, do hereby certify that under requirements of P.A. 74, Michigan P.A. of 1970, the corner points mentioned in lines 1 and 2 above were in conformance with regulations and rules therefore as required in the current manual of survey instructions of the United States Department of the Interior, Bureau of Land Management or by a decree of a Court of Law and/or that the corner points mentioned in lines 3, 4 and 5 above were in conformance with the rules of the Michigan Board of Land Surveyors or by a Decree of a Court of Law, established, re-established, monumented, re-monumented, recovered, found as expressed below:

NOTE: Not more than 4 corners, all in the same town and range, may be recorded on this certificate.

A. Description of original monument and accessories and/or subsequent restoration:

B. Description of corner evidence found and/or method applied in restoring or reestablishing corner:

- A - 13, 1/2" rerod in Mon Box
- B - 13, 1/2" rerod in Lon Box

C. Description of monument for corner and accessories established to perpetuate locating the position of the corner:

- A-13 P.K. Nail in Pow Pole. N.50°E. 64.56', P.K. Nail in Pow Pole S.60°E. 90.89', O.C.R.C. P.K. Nail in Pow Pole S.45°W. 74.99' O.C.R.C. P.K. Nail in Pow Pole N.45°W. 60.80 ft.
- B-13 P.K. Nail Westside 36" Willow Tree S.10°W. 31.80' Back of Conc Curb - Due South 16.40' P.K. Nail Westside Pow Pole S.40°E. 28.00' P.K. Nail Northeast Side 20" Dogwood Tree S.50°E. 51.22 ft.



Signed by *Gerald J. Landwehr*

Date November 30, 1992

Surveyor's Michigan License No. 10065

LAND CORNER RECORDATION CERTIFICATE

FILING REQUIREMENT OF ACT 74, MICH. P.A. 1970

13749665

CLINTON
 LOCATED IN -:

FOR CORNERS OF -:	LOCATED IN -:	CORNER CODE NUMBER
1. PUBLIC LAND SURVEY _____ T. <u>2</u> N. <u>13</u> E. <u>W</u>		B-12 & B-13
2. PROPERTY CONTROLLING IN SECTION <u>31</u> T. <u>2</u> N. <u>13</u> E. <u>W</u>		Point on N.S. 1/4 Ln.
3. MISCELLANEOUS PROPERTY IN SECTION _____ T. _____ N. _____ E. _____ S. _____ R. _____ W. _____		
4. LOT NO. _____, RECORDED PLAT _____		
5. PRIVATE CLAIMS _____		

RECORDED IN MACOMB COUNTY RECORDS AT: 12-41 p.

AUG - 5 1992

Edna H. Hill

CLERK - REGISTER OF DEEDS MACOMB COUNTY, MICHIGAN

REGISTER OF DEEDS STAMP AND FILING NUMBER

I, _____ do hereby certify that under requirements of P.A. 74, Michigan P.A. of 1970, the corner points mentioned in lines 1 and 2 above (identified with circles on index code diagram - over) were, in a field survey on _____ 19____, established, re-established, monumented, re-monumented, recovered or restored as expressed below and in conformance with regulations and rules therefore as required in the current manual of survey instructions of the United States Department of the Interior, Bureau of Land Management or by a decree of a court of law. Furthermore, that the corner points mentioned in lines 3, 4 and 5 above were, in a field survey on _____ 19____, found, recovered, restored, established or re-established as expressed below and in conformance with the rules of the Michigan State Board of Registration for Land Surveyors or, by a Decree of a Court of law:

A. Description of original monument and accessories and/or subsequent restoration:

B. Description of corner evidence found and/or method applied in restoring or re-establishing corner:

B-12 (Center Sec. 31) Found "T" iron
 B-13 (S. 1/4 Corner Sec. 31) Found 1/2" Rod in Mon. Box.

Misc. Corner: P.K. nail set in new asphalt Road over Rod used previously when Road was gravel.

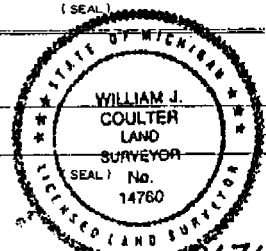
C. Description of monument for corner and accessories established to perpetuate locating the position of the corner:

Misc. Corner - See sketch on reverse side.
 B-12 North 17.85' P.K. in 12" Apple tree.
 East 2.77' P.K. set in Wood fence Post
 S.E. 71.37' corner of Condo Bldg.
 South 51.46' Corner of Condo Bldg.
 B-13 N.W. 115.53' S.E. Cor. House #15975
 N.E. 105.92' P.K. in 18" Poplar
 S.E. 27.92' P.K. in Util. Pole
 W.S.W. 151.09' P.K. & Washer in Util. Pole

SIGNED BY William J. Coulter DATE Aug. 5, 1992
 SURVEYOR'S MICHIGAN REGISTRATION NO. 14760

FOR STATE AND UNITED STATES AGENCIES:

SIGNED BY _____ DATE _____
 CHIEF OF SURVEY PARTY
 APPROVED AND SIGNED BY _____ DATE _____
 MICHIGAN REGISTERED LAND SURVEYOR



SURVEYOR'S MICHIGAN REGISTRATION NO. _____

-015
8.884

112.66

-016
1.66

-007
8.00

1075.40
1099.02

-012
1.343

-013
1.00

-011
1.357

07

92.15

85

81.6

165

312.74

1010

228.27

505.28

193

208.64

205

RD.

Copyright 1973
MACOMB COUNTY, MICHIGAN

3/4 POST

SCALE: 1" = 100'

T.2N. R.13E.

0-13

11-31F



REV. 6-91
REV 9-86
REV. 4-83
REV 4-81

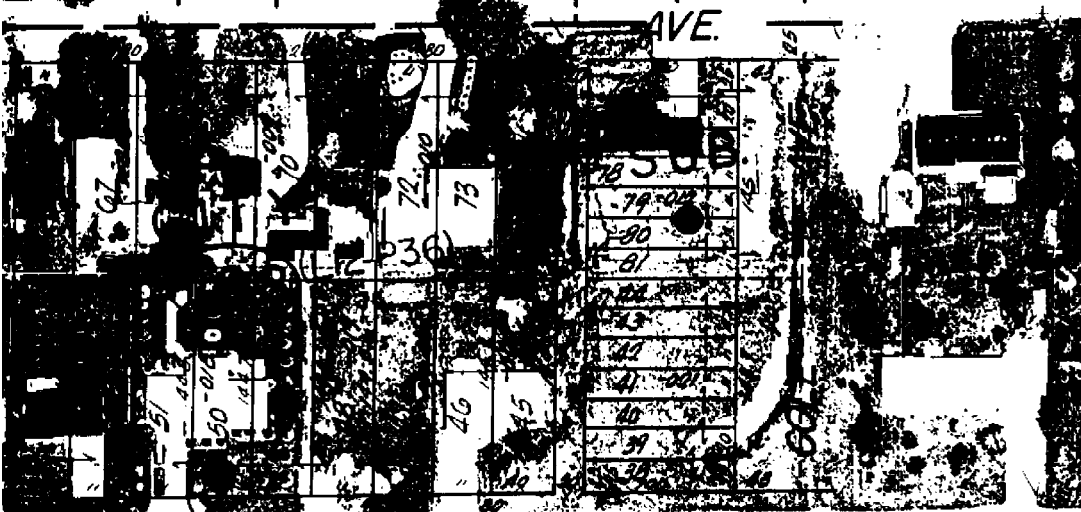
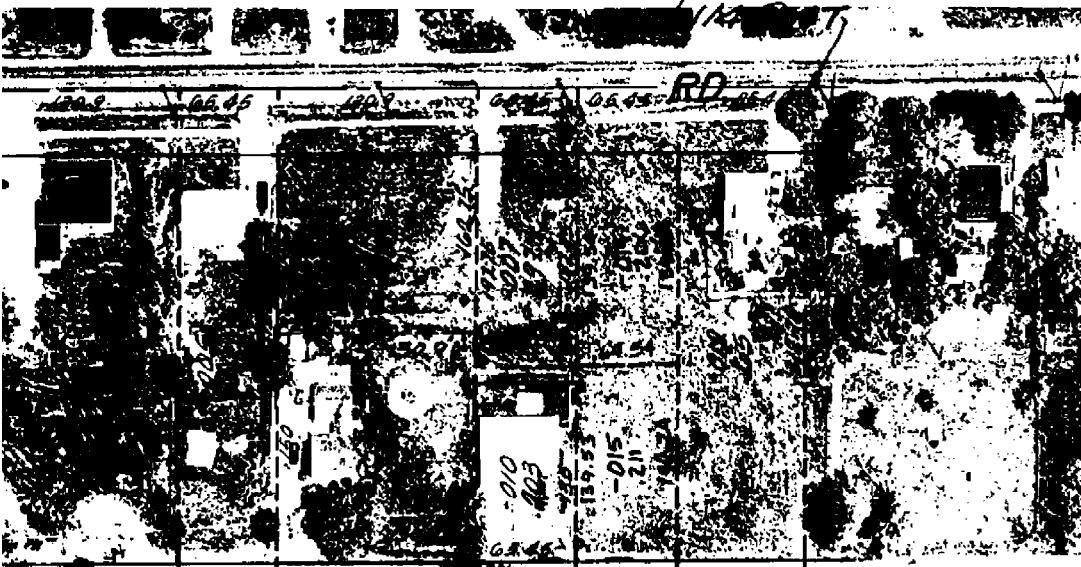
Copyright 1972
MACOMB COUNTY, MICHIGAN

SCALE: 1" = 100'

B-13

11-31G

W. 1/2 SE



Town 2 North Range 13 East

Team Line

South Boundary

6.58 Iron Post Cor B142 N.R. 12+13 E
 from which a Gum 12 in diam bears S11W19 1/2 dist
 also a W Oak 36 in diam bears N31W41 1/2 dist
 19.50 Marsh
 33.30 Left Marsh
 36.00 Marsh
 40.00 Made 1/4 Sec Cor on a willow 8 in diam
 40.50 Left Marshy
 43.62 W.O. 24 in diam
 80.00 Made Cor for sections 5, 6, 31, 32 on
 a Hornbeam 3 in diam
 Land 1st half mile 3rd rate
 last 1/2 mile 2nd rate front dry
 Timber W.O., B.Oak, White Millon
 Hornbeam + C.

East

11.00 Made 1/4 Sec. Cor on a
 Hickory 7 in diam
 66.08 W.O. 30 in diam
 80.00 Made Cor for sections 4, 5, 32+33 on
 a Sycamore - 40 inches diameter
 Level level and dry 2nd rate Timber
 W.Oak, Lyrms, Poplar, Beech, Sugar
 + Mudg^{ts} Spruce + C.
 40.00 Made 1/2 mile cor. on an
 Elm 18 in diam
 49.00 Lyrms 14 in diam
 80.00 Set post for sections 3, 4, 33+34
 from post which a Beech 8 in diam
 bears N45W11 1/2 the dist also a
 Beech 18 in diam bears N41E16 1/2
 dist Land 2nd rate level and dry

Town 2 North Range 13 East

Timber: W. Oak Sugar Poplar
Lynx +0 Wildgth Spruce

14.13 Beech 16 in diam
20.00 Run 4 lks Course S.E.
110.00 made 12 mile Cor. on a
Beech 10 in diam
8000 Set post for cor of Section 2, 3, 34 + 35
post which a Beech 11 in diam bears N
53 & 17 lks dist also an Elm 24 in
bears N 57 31 lks distant
Land first 1/2 mile good 2nd rate
last half 3rd rate Timber Beech
Sugar W. Oak Poplar B. Ash +0
Wildgth Spruce +0

21.15 W. Oak 18 in diam
30.00 Intersect P. Claim N^o 123
from the Set post for cor of each
Sections 2 + 35 from which a B. Ash
10 in diam bears N 77 & 4 lks dist
also a Lynx 7 in diam bears N 32
& 2 lks dist Land dry good 2nd rate
Timber Beech B. Ash Poplar +0

Surveyed 1915 by Wm. P. Pickett D.S.

Smith
4000 East Boundary
Set 14 Sec post from White an Elm in
diam bears S 15 N 23 lks also a Lynx 12 in
bears N 77 21 lks.
46.50 Run Oak 30 in diam
46.75 Intersect P. Claim 19.20 East of cor 40 + 35
Land land and not 2nd rate Timber B. Ash
Beech Lynx Sugar +0 +0

Surveyed by Wm. Pickett 1915