

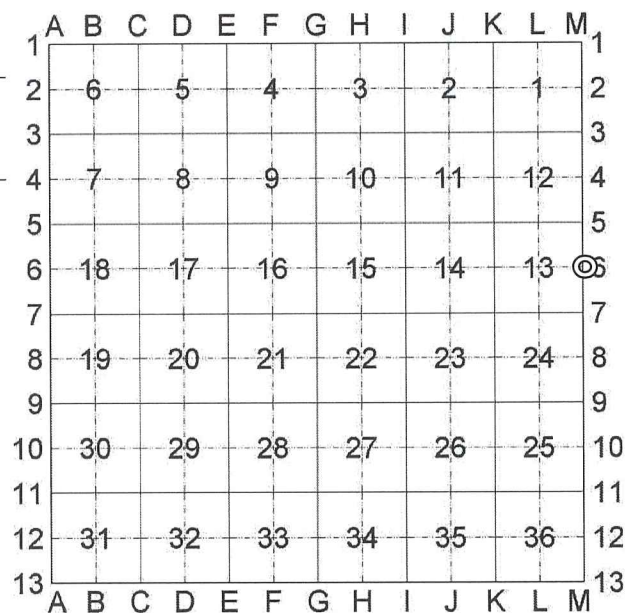
Land Corner Recordation Certificate
2016 Annual Grant Agreement
Authority: MICH. 1970 PA 74, MCL 54.205

"LCRC BEING RECORDED FOR THE PURPOSE OF PUBLISHING MICHIGAN STATE PLANE COORDINATE DATA"

Surveyor's Name: Steven E. Dunn, P.S.
For corner(s) in: Macomb County

Field Survey Date: January 11, 2016
Municipality: City of Sterling Heights & Clinton Township

Corner Type	Survey Township			Corner Code
Original Public Land Survey Corner	S	13	T 02N R 12E	M06
Protracted Public Land Survey Corner	S	18	T 02N R 13E	A06



Part A: Corner History: M06 East ¼ Corner Section 13. This corner is common with A06, T02N, R13E West ¼ Corner Section 18.

12-14-1994 LCRC for Remonumentation Corner by Randy J. Kolehouse, PS #25854, M06 recorded in L. 6527, P. 846, set ¾" X 24" rebar with a 2" diameter aluminum cap stamped "MACOMB COUNTY MONUMENT MI ACT 345 25854" in a new monument box with 4 accessories.
Peer Review Group Approval: August 16, 1994

Same as above for corner A06,

12-14-1994 LCRC for Remonumentation Corner by Randy J. Kolehouse, PS #25854, A06 recorded in L. 6527, P. 786, set ¾" X 24" rebar with a 2" diameter aluminum cap stamped "MACOMB COUNTY MONUMENT MI ACT 345 25854" in a new monument box with 4 accessories.
Peer Review Group Approval: August 16, 1994

Part B: Surveyor's Report on Perpetuation, Restoration, Reestablishment or Monumentation of Corner:

Refer to: 12-14-1994 LCRCs for Remonumentation Corner by Randy J. Kolehouse, PS #25854, M06 recorded in L. 6527, P. 846 and A06 recorded in L. 6527, P. 786, 12-14-1994. Found monumentation of corner per above referenced LCRCs.

Part C: Field Evidence of Perpetuation or Monumentation of Corner:

1-11-2016 Found ¾" rebar in a monument box with 4 of 4 matching accessories from the LCRCs listed in Part A. Occupied corner with GPS to obtain Geodetic Coordinate Data.

Accessories:

- S.80°E. 59.22' (R & M) Found PK nail w/tag #21563 South face of utility pole.
- S.24°E. 134.03' (R & M) Found PK nail w/Macomb County Remon tag in Northwest face utility pole.
- N.47°W. 58.73' (R & M) Found PK nail in Northeast face of utility pole.
- N.27°W. 73.81' (R & M) Center top nut fire hydrant.

2 ml

C

Part C: Continued

Date of Observation	Latitude	Longitude	Datum and Adjustment Year	Epoch Date
1-11-2016	N42°35'24.52814"	W82°58'18.30385"	NAD83 (2011)	2010.0000

Method for Latitude-Longitude determination: NGS OPUS Solution

State Plane Coordinates in international feet: N-400390.25', E-13498954.87'
 Standard Deviation: 0.02' N – 0.02' E
 South Zone
 Combined Factor: 0.99989650
 NGSPID: NE1250
 Survey Method: MC GPS
 Orthometric Height: 605.26'
 Elev. Datum: NAVD 88

I, Steven E. Dunn, P.S., in a field survey on January 11, 2016, certify under the requirements of the State Survey and Remonumentation Act, 1990 PA 345, MCL 54.261 to 54.279, and the Corner Recordation Act, 1970 PA 74, MCL 54.201 to 54.210d, that the corner identified and described hereon has been perpetuated or monumented as described in Parts A, B, and C above, pursuant to the laws and rules of the State of Michigan.

Steven E. Dunn

Steven E. Dunn, P.S.

June 18, 2016

Date

Professional Surveyor's License No.: 28408

Great Lakes Geomatics, LLC
 12504 Stephens
 Warren, MI 48089



I, Martin C. Dunn, P.S., Macomb County Surveyor Representative, have reviewed the corner perpetuated in parts A, B and C above for the purpose of publishing its Michigan State Plane Coordinate values and relative data and is accepted for filing in the Macomb County Remonumentation Program.

Martin C. Dunn

Martin C. Dunn, P.S.

September 21, 2016

Date

Macomb County Surveyor Representative
 License No. 30081

						Land Corner Recordation Certificate	
T	02	N	R	12	E	Code	M06
T	02	N	R	13	E	Code	A06

LAND CORNER RECORDATION CERTIFICATE

Filing Requirement of Act 74, Mich. P.A. 1970

corners in
MACOMB
(County)

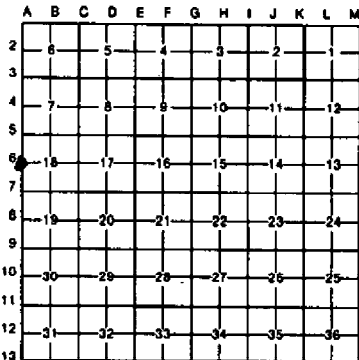
Located In: Clinton Township Corner Code #

LIBER 6527 PAGE 786

Public Land Survey	T 2N	R 13E	A-6
	T	R	
	T	R	
	T	R	
Property Controlling in Section	S	T	R
Miscellaneous	S	T	R
Property in Sec.	S	T	R

94 DEC 14 AM 10:51
CALVIN W. BAUGH
REGISTER OF DEEDS
MACOMB COUNTY, MI
Register of Deeds Stamp & File Number

Lot No. _____, Recorded Plat _____
Private Claims _____



Randy Kolehouse, in a field survey on July 15, 1994, hereby certify that under requirements of P.A. 74, Michigan P.A. of 1970, the corner points mentioned in lines 1 and 2 above were in conformance with regulations and rules therefore as required in the present manual of survey instructions of the United States Department of the Interior, Bureau of Land Management or by a decree of a Court of Law and/or that the corner points mentioned in lines 3, 4 and 5 above were in conformance with the rules of the Michigan Board of Land Surveyors or by a Decree of a Court of Law; established, re-established, monumented, re-monumented, recovered, found as pressed below:

NOTE: Not more than 4 corners, all in the same town and range, may be recorded on this certificate.

Description of original monument and accessories and/or subsequent restoration:

6	1817	G.L.O.	Notes	Wampler	NA	Post
	1972	L.C.R.C.	L. 2302 P. 145, 146	Brabant	#17611	1/2" Bar
	1972	Survey	L. 2302 P. 144	Brabant	#17611	
	1977	Cert. Survey	L. 2761 P. 470	Smith	#16052	Iron
	1977	L.C.R.C.	L. 2918 P. 56	Patterson	#17631	1/2" Iron
	1977	Cert. Survey	L. 2865 P. 247	Avey	#15396	1/2" Bar
			L. 2886 P. 965			
	1978	L.C.R.C.	L. 2902 P. 559	Soderberg	#17635	1" Iron Pipe
	1978	L.C.R.C.	L. 3059 P. 199	Soderberg	#17635	1/2" Re-Rod
	1989	L.C.R.C.	L. 4799 P. 506	Donnelly	#21563	1/2" Rod

Description of corner evidence found and/or method applied in restoring or reestablishing corner:

6 Found 1/2" rebar in center line of Hayes Rd. and Stadler Road.

L.C.R.C. L. 2918 P. 56 Nail and Washer Ut. Pole ESE 59.18' Nail and Washer Ut. Pole NW 57.62'	L.C.R.C.'s L. 2865 P. 247, 249 and L. 2886 P. 965 16D Nail and Washer NW Face Ut. Pole NW 57.62' 16 D. Nail and Washer S Face Ut. Pole E 59.13'	L.C.R.C. L. 3059 P. 199 PK NE Face DE Pole NW 57.46' Nail S Face DE Pole E 59.24'
---	---	---

L.C.R.C. L. 2902 P. 559 Nail and Washer N Face Ut. Pole NW 57.64' Nail and Washer S Face Ut. Pole E 59.23'	L.C.R.C. L. 4799 P. 506 PK with Tag S Face Ut. Pole ESE 59.20' Center Line Top Nut Hyd. NW 73.68'
--	---

ACCEPTED BY THE MACOMB COUNTY SURVEY PEER GROUP AS THE OFFICIAL CORNER UNDER MICHIGAN PUBLIC ACT 345 OF 1990 AT A MEETING HELD ON 8-16-94
William E. Soderberg
WILLIAM E. SODERBERG, P.S., CHAIRMAN

Measure N. 2695.56 to A-5.
Measure S. 2672.50 to A-7 (Survey L. 2302 P. 144 = 2673.1) (G.L.O. 2640)
This corner location is common with M-6 T2N R12E.

Description of monument for corner and accessories established to perpetuate locating the position of the corner:

3 I replaced the found 1/2" Rebar with a 3/4" x 24" Iron Rod w/2" diameter aluminum cap stamped "Macomb County Monument MI Act 345 #25854," also set Monument Box.
PK with Tag #21563 S Face Ut. Pole S 80° E 59.22'
PK & Macomb Co. Remon. Tag in NW Face Ut. Pole S 24° W 134.03'
PK NE Face Ut. Pole N 47° W 58.73'
Center Line Top Nut Fire Hyd. N 27° W 73.81'



The selected location is accepted by me and is generally accepted by professional surveyors as the best available evidence of the position of the original corner.

Recorded by *Randy J. Kolehouse* Date 10/19/94
Surveyor's Michigan License No. 25854

WW ENGINEERING & SCIENCE SECTION CORNER RECOVERY RECORD

CLIENT mc
 PROJ. # 92892
 DATE 11-18-93

CREW CHIEF BA
 RODMAN LP
 RODMAN _____

TOWN 21 RANGE 12E
13E
 CORNER m-6
A-6

RECORD MONUMENTATION: SEE ATTACHED

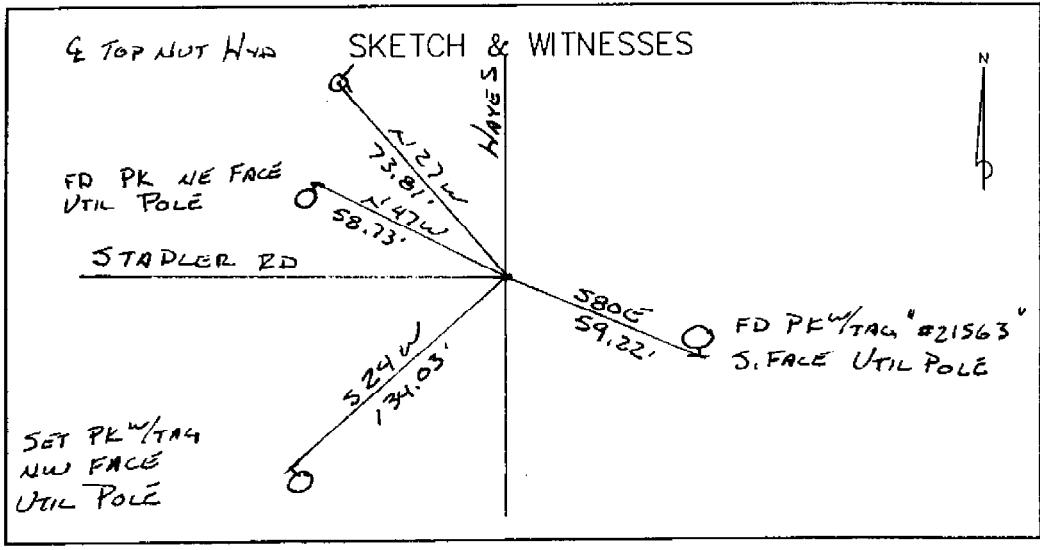
RECORD (CRC? _____) LIBER _____ PAGE _____ RC# _____
 LIBER _____ PAGE _____ RC# _____

RECORD SURVEY? _____ LIBER _____ PAGE _____
 LIBER _____ PAGE _____

OTHER RECORD? _____

MONUMENTATION/EVIDENCE FOUND: _____

	A	B	C	D	E	F	G	H	I	J	K	L	M
2	6	5	4	3	2	1							
3													
4	7	8	9	10	11	12							
5													
6	18	17	16	15	14	13							
7													
8	19	20	21	22	23	24							
9													
10	30	29	28	27	26	25							
11													
12	31	32	33	34	35	36							
13													





	WITNESS	P. 145 E	REC. DATE	MEAS.	
1-6	LCRC L. 2302	P. 146 #129B	4-20-72	1/2" BAR	
GONE	SPIKE NW FACE GUY POLE	NE	46.73		
GONE	SPIKE SW FACE LIGHT/GUY	SE	42.23		
	" " " DE POLE	NW	57.57	57.64' *	
6	CERT. SURV. L. 2302	P. 111	7-5-72		
	AG 7-7 = 2673.10'				
1-6	CERT. SURV. L. 2761	P 470	1-6-77	IRON	
	PK IN U.P.	NW	57.22	58.73 *	
GONE	PK IN U.P.	NE	46.73		
GONE	PK IN 40" ASH	SE	68.33		
A 6	LCRC L. 2902	P. 552 #706	1-14-78	1" IRON PIPE	
	NAIL & WASHER N. FACE U.P.	NW	57.64'	57.64 *	
	NAIL & WASHER S. FACE U.P.	E	59.23'	59.23 *	
GONE	NAIL & WASHER SW FACE U.P.	ESE	42.10'		
GONE	NAIL & WASHER SE FACE U.P.	SW	138.42'		
M-6	CERT SURVEY L 2865 P 247, L 2865 P 249, & L 2866 P 965		7-11-77	1/2" BAR	
	ALL DONE BY SAME PERSON AT SAME TIME				
	16D NAIL w/WASHER	NW FACE UTIL POLE	NW	57.62	57.64' *
GONE	16D NAIL w/WASHER	SW FACE GUY POLE	2.5' UP	ESE	41.98'
	16D NAIL w/WASHER	S. FACE UTIL POLE	E	59.13	59.23' *
M-6	LCRC L 2918	P 56 #216	12-8-77	1/2" IRON	
	NAIL w/WASHER	UTIL POLE	ESE	59.18'	59.23 *
GONE	NAIL w/WASHER	GUY POLE	SE	42.00'	
GONE	NAIL w/WASHER	UTIL POLE	SW	138.40'	
	NAIL w/WASHER	UTIL POLE	NW	57.62'	57.64 *

6
15

m-6

LCRC	L 3051	P 111	# 830	7-78	1/2" RE-ROD		
	PK	NE	FACE	DE POLE	NW	57.46	57.46 *
	TOP	HYD			NW	73.13	73.71 *
	NAIL	S.	FACE	DE POLE	E	59.24	59.23 *
GONE	P.K	IN	GUY	POLE	SE	41.98	

7

m-6	LCRC	L 4711	P 504	5-22-89	1/2" IRON ROD		
	PK	W/TAG	S.	FACE	UTIL POLE	ESE	59.25 59.23 *
GONE	PK	SW	FACE	GUY	POLE	SE	41.84'
	2	TOP	NOT	HYD		NW	73.68 73.712

* INDICATES DISTANCES MEAS. # 11-93 AS PART OF '93 PROGRAM BY WIVES CREW

LAND CORNER RECORDATION CERTIFICATE

FILING REQUIREMENT OF ACT 74, MICH. P.A. 1970

LIBER 2302 PAGE 145

A130103

FOR CORNERS OF: <u>Sec. 18</u> LOCATED IN--	CORNER CODE NUMBER
1. PUBLIC LAND SURVEY _____ T. <u>2</u> N. <u>W.</u> <u>13</u> E. _____	<u>A-6 & A-7</u>
2. PROPERTY CONTROLLING IN SECTION _____ T. _____ N. _____ S. _____ R. _____ E. _____ W. _____	
3. MISCELLANEOUS PROPERTY IN SECTION _____ T. _____ N. _____ S. _____ R. _____ E. _____ W. _____	
4. LOT NO. _____ RECORDED PLAT _____	
5. PRIVATE CLAIMS _____	

RECORDED IN MACOMB COUNTY
RECORDS AT: 9:35 A.M.
JUL 5 1972
Edna H. Hubbell
CLERK - REGISTER OF DEEDS
MACOMB COUNTY, MICHIGAN

REGISTER OF DEEDS STAMP AND
FILING NUMBER

I, Fred E. Brabant do hereby certify that under requirements of P.A. 74, Michigan P.A. of 1970, the corner points mentioned in lines 1 and 2 above (identified with circles on index code diagram - over) were, in a field survey on 20 April 1972, established, re-established, monumented, re-monumented, recovered or restored as expressed below and in conformance with regulations and rules therefore as required in the current manual of survey instructions of the United States Department of the Interior, Bureau of Land Management or by a decree of a court of law. Furthermore, that the corner points mentioned in lines 3, 4 and 5 above were, in a field survey on _____ 19____, found, recovered, restored, established or re-established as expressed below and in conformance with the rules of the Michigan State Board of Registration for Land Surveyors or, by a Decree of a Court of law:

A. Description of original monument and accessories and/or subsequent restoration:

B. Description of corner evidence found and/or method applied in restoring or re-establishing corner:

Ties given by Macomb Co. Road Commission

C. Description of monument for corner and accessories established to perpetuate locating the position of the corner:

A-6 1/2" Iron Bar flush with pavement
A-7 " " " " " "

SIGNED BY Fred E. Brabant DATE 30 May 1972

SURVEYOR'S MICHIGAN REGISTRATION NO. 17611 (SEAL)

FOR STATE AND UNITED STATES AGENCIES:

SIGNED BY _____ CHIEF OF SURVEY PARTY DATE _____

APPROVED AND SIGNED BY _____ MICHIGAN REGISTERED LAND SURVEYOR DATE _____ (SEAL)

SURVEYOR'S MICHIGAN REGISTRATION NO. _____ 00129A

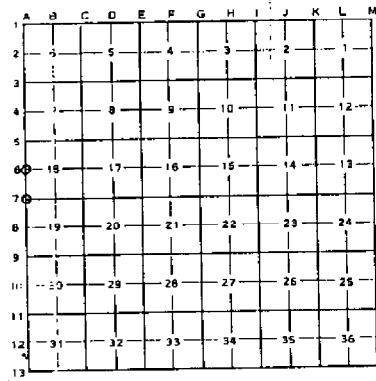
Form No. ML M725
DUBLUEDY PLOS. & CO., ANN ARBOR, MICH.

FORM APPROVED BY MICHIGAN STATE BOARD OF REGISTRATION, JAN. 26, 1971
DISTRIBUTED BY MICHIGAN SOCIETY OF REGISTERED LAND SURVEYORS

3-

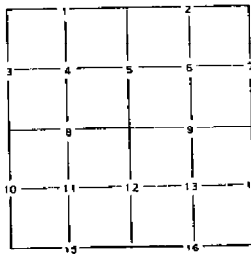
CORNER NUMBERING CODE DIAGRAMS FOR IDENTIFYING LAND CORNER RECORDATIONS AND INDEXING

FOR PUBLIC LAND SURVEY CORNERS IN THE
T. 2 N., R. 23 E. (MENTIONED OVER)



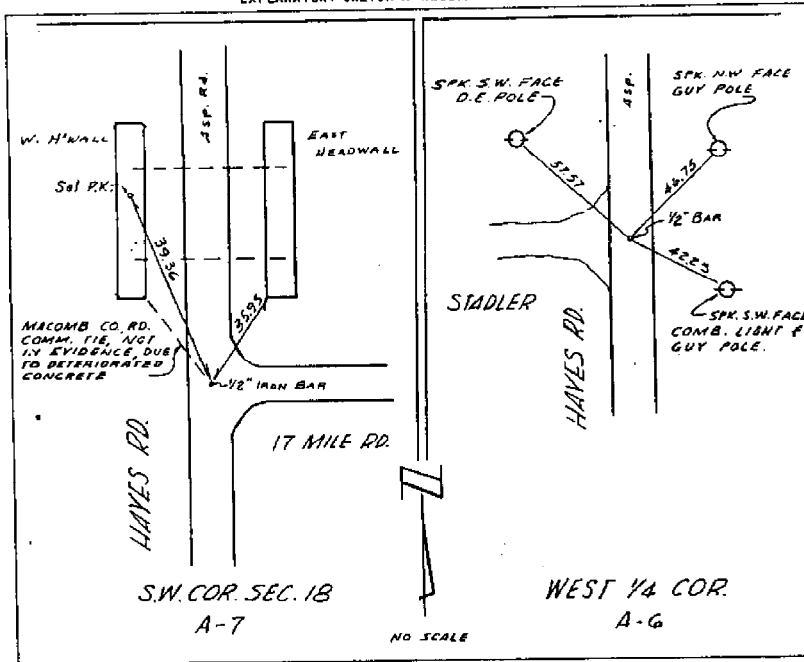
Apply letter prefix for corner points encircled above for identifying corner recordation numbers over.

FOR PROPERTY CONTROLLING AND MISC. PROPERTY CORNERS WITHIN THE SECTION (MENTIONED OVER AND EXCLUDE LOT CORNER)



1. Above coded numbers are positioned on 1/16 fractional lines of the section.
2. Township corner code numbers shall be applied to corners of above typical section not numbered.
3. Miscellaneous property corners within a section, located at points other than numbered above, shall be referenced to at least two of above corner code numbers.
4. Private claim corners to be tied to rectangular land corners if possible - sketch required below.

EXPLANATORY SKETCH IF NECESSARY -- BELOW

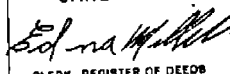


00129B

LIBER 2902 PAGE 559
LAND CORNER RECORDATION CERTIFICATE
 FILING REQUIREMENT OF ACT 74, MICH. P.A. 1970

A474796

FOR CORNERS OF--	LOCATED IN--	CORNER CODE NUMBER
1. PUBLIC LAND SURVEY	T. 2 N. R. 13 E.	A-5, A-6, B-5
2. PROPERTY CONTROLLING IN SECTION	T. 2 N. R. 13 E.	
3. MISCELLANEOUS PROPERTY IN SECTION	T. 1 N. R. E.	
4. LOT NO. _____	RECORDED PLAT _____	
5. PRIVATE CLAIMS _____		

RECORDED IN MACOMB COUNTY
 RECORDS AT: 4:30 P. M.
 JAN 16 1978

 CLERK - REGISTER OF DEEDS
 MACOMB COUNTY, MICHIGAN
 REGISTER OF DEEDS STAMP AND
 FILING NUMBER

I, William E. Soderberg do hereby certify that under requirements of P.A. 74, Michigan P.A. of 1970, the corner points mentioned in lines 1 and 2 above (identified with circles on index code diagram - over) were, in a field survey on _____ 19____, established, re-established, monumented, re-monumented, recovered or restored as expressed below and in conformance with regulations and rules therefore as required in the current manual of survey instructions of the United States Department of the Interior, Bureau of Land Management or by a decree of a court of law. Furthermore, that the corner points mentioned in lines 3, 4 and 5 above were, in a field survey on _____ 19____, found, recovered, restored, established or re-established as expressed below and in conformance with the rules of the Michigan State Board of Registration for Land Surveyors or, by a Decree of a Court of law:

A. Description of original monument and accessories and/or subsequent restoration:

B. Description of corner evidence found and/or method applied in restoring or re-establishing corner:

- A-5 1" Iron Pipe
- A-6 1" Iron Pipe
- B-5 1" Steel Form Pin

C. Description of monument for corner and accessories established to perpetuate locating the position of the corner:

- | | |
|---|--|
| A-5 1" Iron Pipe
Nail in R.L.S. Washer S.E. Face of D.E. Pole N.W. 49.80'
P.K. Nail in South Face D.E. Pole E.N.E. 39.55'
Nail in R.L.S. Washer N. Face D.E. Pole E.S.E. 122.06'
Top Centerline Hydrant S.S.W. 155.80' | B-5 1" Steel Form Pin
Nail & Cap in N.W. Face 12 tree N.E. 29.88'
P.K. in N. Face 8" Tree S. 144.21'
Nail & Cap in S.W. Face 12' Tree N.W. 39.15'
P.K. in E. Face D.E. Pole North 61.31' |
| A-6 1" Iron Pipe
Nail & Washer in N. Face of D.E. Pole - N.W. 57.64'
Nail & Washer in S. Face of D.E. Pole - E. 59.23'
Nail & Washer in S.W. Face of D.E. Pole E.S.E. 42.10'
Nail & Washer in S.E. Face of D.E. Pole S.W. 138.42' | |

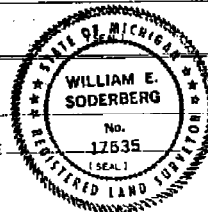
SIGNED BY William E. Soderberg DATE 1-14-78

SURVEYOR'S MICHIGAN REGISTRATION NO. 17635

FOR STATE AND UNITED STATES AGENCIES:

SIGNED BY _____ DATE _____
CHIEF OF SURVEY PARTY

APPROVED AND SIGNED BY _____ DATE _____
MICHIGAN REGISTERED LAND SURVEYOR



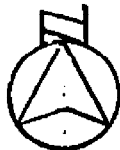
SURVEYOR'S MICHIGAN REGISTRATION NO. _____ 00706

CERTIFICATE OF SURVEY

A130102

W. 1/4 COR. SEC. 18,
T.2N., R.13E.

E.W. 1/4 Line 2



SCALE: 1" = 300'

430.85

POINT OF BEGINNING

N. 87° 55' 40" E. 661.17

33'

1577.02

23.913 Ac.

1577.03

33'

S. 87° 55' 40" W. 660.71

W. Line SEC. 18

665.23

S.W. COR.
SEC. 18,

S. Line SEC. 18

17 MILE RD.

DESCRIPTION

A parcel of land lying in the S.W. 1/4 of Section 18, T.2N., R.13E., Clinton Township, Macomb County, Michigan described as beginning at a point on the West line of said Section 18, said point being distant S.0°01'50"E., 430.85 feet from the West 1/4 Corner of said Section 18; thence N.87°55'40"E., 661.17 feet; thence S.0°00'50"E., 1577.03 feet; thence S.87°55'40"W., 660.71 feet to a point on the West line of said Section 18; thence along said West line, N.0°01'50"W., 1577.02 feet to the Point of Beginning, containing 23.913 acres.

RECORDED IN MACOMB COUNTY
RECORDS AT: 9:35 A.M.

JUL 5 1972

Fred E. Brabant

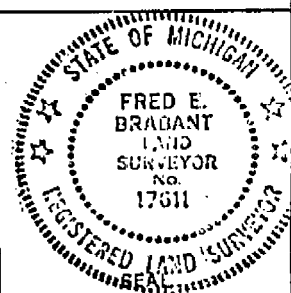
CLERK - REGISTER OF DEEDS
MACOMB COUNTY, MICHIGAN

• Denotes Iron Set

PARCEL LYING IN THE S.W. 1/4, SEC. 18, T.2N., R.13E.,
CLINTON TWP., MACOMB CO., MICH.

I hereby certify that I have surveyed and mapped the land above platted and/or described on 28 April 1972 and that the ratio of closure on the unadjusted field observations on such survey was 1/14000, and that all of the requirements of P.A. 132 1970 have been complied with.

Fred E. Brabant
Fred E. Brabant
R.L.S. No. 17611



WHEN RECORDED RETURN TO:
25 WEST LONG LAKE

HOYEM ASSOCIATES INC.
BLOOMFIELD HILLS, MICH. 48013

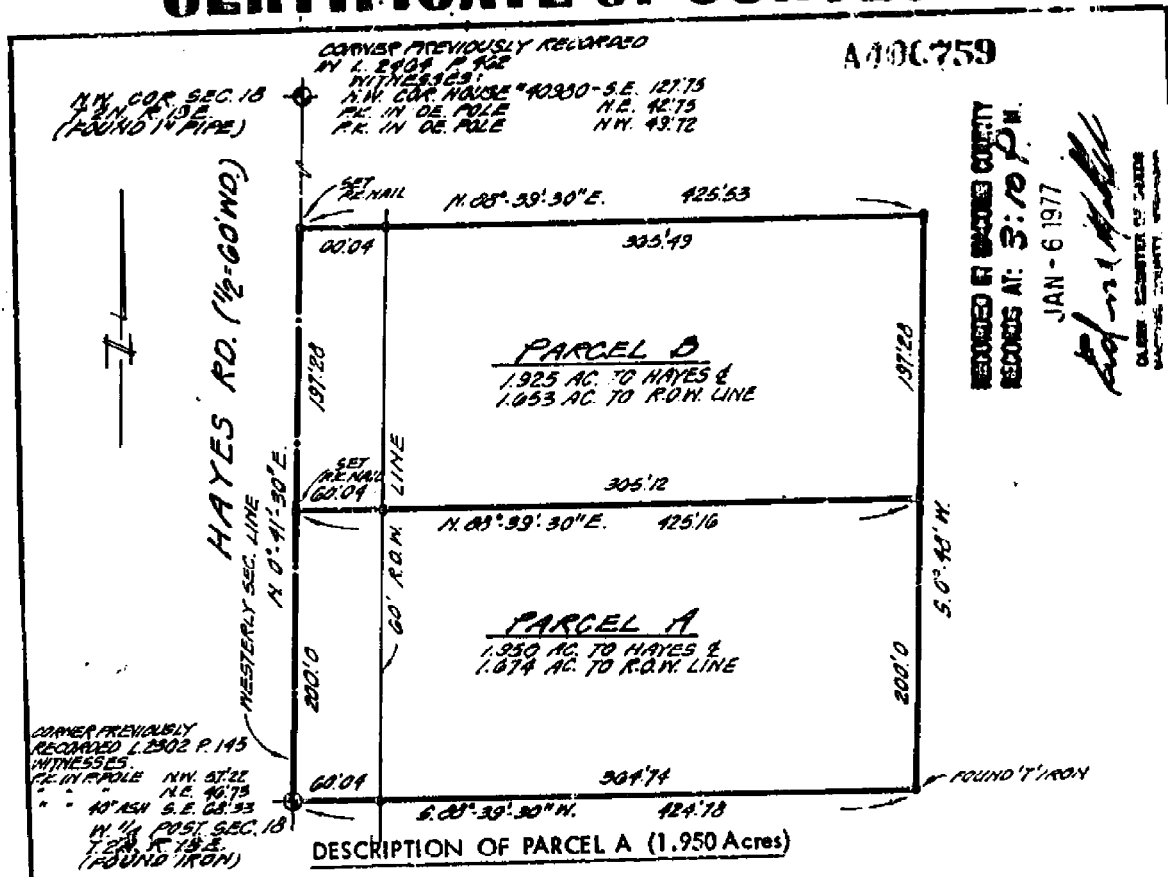
DRAFTED BY:

2.00

A-5
A-6

CERTIFICATE of SURVEY

A 100-759



A parcel of land located in and being a part of the Northwest 1/4 of Section 18, T. 2 N., R. 13 E., Clinton Township, Macomb County, Michigan, and being more particularly described as follows:

Commencing at the West 1/4 post of said Section 18 and thence extending N. 0°-41'-30" E. 200.0 feet along the Westerly line of said Section 18 and thence extending N. 88°-39'-30" E. 425.16 feet; thence S. 0°-48' W. 200.0 feet; thence S. 88°-39'-30" W. 424.78 feet to the point of beginning and containing 1.950 acres of land. Reserving easements of record.

A parcel of land located in and being a part of the Northwest 1/4 of Section 18, T. 2 N., R. 13 E., Clinton Township, Macomb County, Michigan, and being more particularly described as follows:

Commencing at a point 200.0 feet N. 0°-41'-30" E. from the West 1/4 post of said Section 18 and thence extending N. 0°-41'-30" E. 197.28 feet along the Westerly line of said Section 18 and thence extending N. 88°-39'-30" E. 425.53 feet; thence S. 0°-48' W. 197.28 feet; thence S. 88°-39'-30" W. 425.16 feet to the point of beginning and containing 1.925 acres of land. Reserving easements of record.

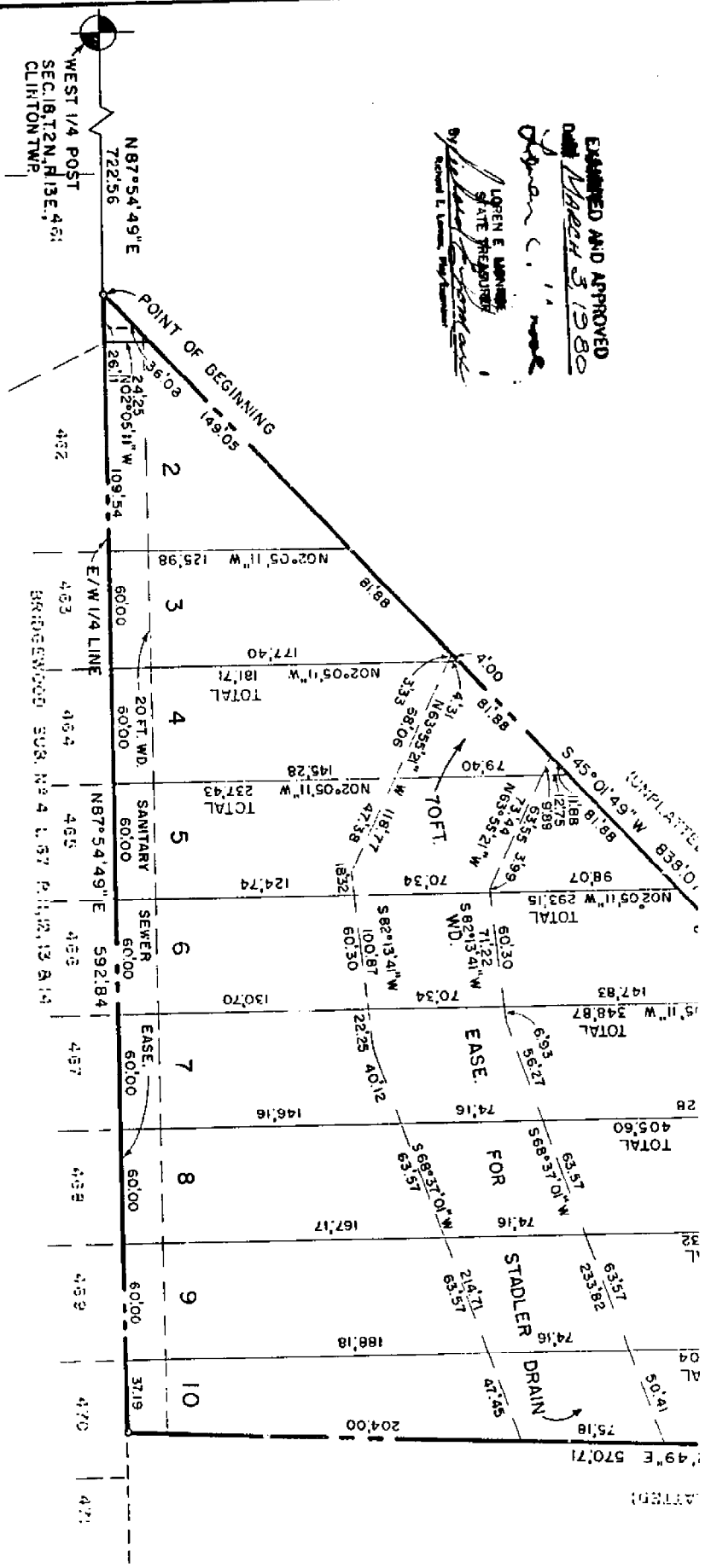
I, **ROBERT L. SMITH**, a Registered Surveyor in the State of Michigan, hereby certify that I have surveyed the parcel (s) of land described and delineated hereon; that said plot is a true representation of the survey as performed by me, and that there are no encroachments other than as shown hereon; that said survey was performed with an error of closure no greater than 1 in 6000; and that I have fully complied with the requirements of Section 13, Act 132, P. A. 1970.

Robert L. Smith

70-759 AL 0000 / 544 MAR

EXAMINED AND APPROVED
 DATE March 3, 1980

LOREN E. WILSON
 STATE TREASURER
 BY: [Signature]
 ROBERT L. WILSON, Prof. Engineer



THIS PLAT IS SUBJECT TO A EASE FOR THE
 STADLER DRAIN AS RECORDED IN LIBER 3134
 PAGE 536, MACOMB COUNTY RECORDS

Trainer Sub.
 W/4 Sec 18 T2N, R13E
 L. 76 P. 39
 A-5

NOTE
 LOTS 1 TO 10, BOTH INCLUSIVE, ARE TO BE OWNED BY
 EACH ADJACENT LOT OWNER IN BRIDGEWOOD SUB. N# 4,
 AND NO DWELLING UNITS ARE TO BE BUILT ON THESE LOTS.



Date: 11-1-75
 Client: MC REYNOL
 Project No.: 22528

TRN, RIZE

CORNER M-6

1817 GLO = NE 1/4 to E 1/4 13 = 2640
 E 1/4 13 to SE 1/4 13 = 2640

1744 RES. E 1/4 13 to SE 1/4 13 = 2678.50
 2678.50

1725 WWES - NE 1/4 to E 1/4 13 = 2678.50
 W 1/4 13 to E 1/4 13 = 5278.50

CORNER M-6

GLO = POST

1934 MCKC - 1" DIA. PIPE

1945 LORC - 1/2" IRON

1977 LORC - 1/2" IRON

1976 LORC - 1/2" IRON

1973 WWES - 3/4" PIPE 1/2" DIA.

T-24
 R-12E
 L-5
 M-5
 M-6
 STERLING TWP (STERLING HEIGHTS)
 SEC COR. TIES

CENTER
 OF 11" DIA
 LONG. SUMP

PO.
 1 1/2" PIPE U.E. COR
 SEC. 13

440
 M.H. C. 120
 N. 55° E

E - MAIN
 425
 N. 1/4 COR SEC. 13
 1" PERCO
 & SABL. PO.

1 1/2" DIA
 IN D.E.
 POLE

SHADE 2

1" PERCO 1/4 COR
 3/4 BELOW
 SURFACE
 SEC. 9

1 1/2" DIA IN GRAY POLE

1 1/2" DIA IN GRAY POLE

7301002

Road File No. _____

File Point No. _____ Date Filed 6-29 1934
 Assessment District No. 90 Station No. 447
 Township Clinton Section Corner SE 36.5
SW 35.95
 Type of Surface Clay Width 20
 Description of Monument 1" Gas Pipe
 Monument in Relation to Center Line of Pavement E

WITNESSES:

1. S.E. Cor. West H.W. N.W. 36.5
 2. SW East H.W. N.E. 35.95
 3. Spike in 36" Maple S 45° W 39.6
 4. _____

T2N, R12E
M-6

LAND CORNER RECORDATION CERTIFICATE

FILING REQUIREMENT OF ACT 74, MICH. P.A.1970

City of Sterling Heights

FOR CORNERS OF -:	LOCATED IN - SEC. 13	CORNER CODE NUMBER
1. PUBLIC LAND SURVEY _____	T. 2 N. R. 12 E.	M5, M6
2. PROPERTY CONTROLLING IN SECTION _____	T. _____ N. S. R. _____ E. W.	
3. MISCELLANEOUS PROPERTY IN SECTION _____	T. _____ N. S. R. _____ E. W.	
4. LOT NO. _____, RECORDED PLAT _____		
5. PRIVATE CLAIMS _____		

A483190

RECORDED IN MACOMB COUNTY RECORDS AT: 10:02 A.M.

11/18 - 6 1978

Edna Miller

CLERK - REGISTER OF DEEDS MACOMB COUNTY, MICHIGAN

REGISTER OF DEEDS STAMP AND FILING NUMBER

I, Robert J. Patterson, do hereby certify that under requirements of P.A. 74, Michigan P.A. of 1970, the corner points mentioned in lines 1 and 2 above were, in a field survey on December 8, 1977, established, re-established, monumented, re-monumented, recovered or restored as expressed below and in conformance with regulations and rules therefore as required in the current manual of survey instructions of the United States Department of the Interior, Bureau of Land Management or by a decree of a court of law. Furthermore, that the corner points mentioned in lines 3, 4 and 5 above were, in a field survey on _____, 19____, found, recovered, restored, established or re-established as expressed below and in conformance with the rules of the Michigan State Board of Registration for Land Surveyors or, by a Decree of a Court of law:

A. Description of original monument and accessories and/or subsequent restoration:

- M5 - Northeast Corner - Found 1/2" Iron Centerline of Hayes Road and 18 Mile Road - No data available
- M6 - East 1/4 Corner - Found 1/2" Iron - No data available

B. Description of corner evidence found and/or method applied in restoring or re-establishing corner:

- M5 - Matched Existing Legal Descriptions and Recorded Plats
- M6 - Matched Existing Legal Descriptions and Recorded Plats

C. Description of monument for corner and accessories established to perpetuate locating the position of the corner:

- M5 - Found 1/2" Iron-Witness Points- Set P.K. Nail in Utility Pole Northeasterly 86.16 ft.; found Nail and Washer in Utility Pole Southeasterly 122.08 ft.; Center of Top Nut on Hydrant Southwesterly 155.76 ft.; Found Nail and Washer in Utility Pole Northwesterly 49.80 ft.
- M6 - Found 1/2" Iron-Witness Points-found Nail and Washer in Utility Pole East-Southeasterly 59.18 ft.; Found Nail and Washer in Guide Pole Southeasterly 42.00 ft.; Found Nail and Washer in Utility Pole Southwesterly 138.40 ft.; Found Nail and Washer in Utility Pole Northwesterly 57.62 ft.

SIGNED BY Robert J. Patterson DATE Jan. 4, 1978

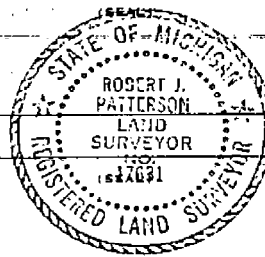
SURVEYOR'S MICHIGAN REGISTRATION NO. 17631

FOR STATE AND UNITED STATES AGENCIES:

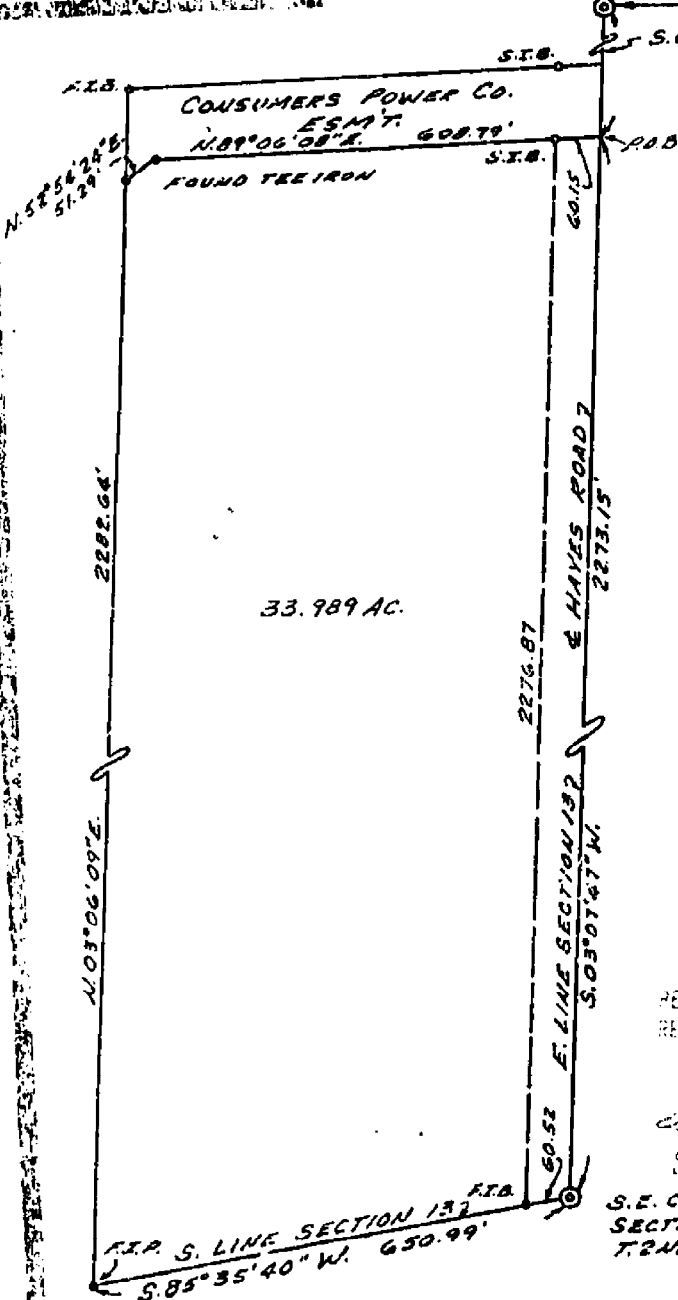
SIGNED BY _____ DATE _____

APPROVED AND SIGNED BY _____ DATE _____

MICHIGAN REGISTERED LAND SURVEYOR



SURVEYOR'S MICHIGAN REGISTRATION NO. _____



E. 1/4 CORNER SECTION 13 T.2N., R.1E. A455315

SURVEYOR'S CERTIFICATE

I hereby certify that I have surveyed and mapped the land above platted and/or described on July 11, 1977 and that the ratio of closure on the unadjusted field observations of such survey was 1/207,900 and that all of the requirements of P.E. 132 1970 have been complied with.

Bearings for this survey correspond to those of "Washington Square" subdivision on the north side of Stadler Road as recorded in Liber 66, Pages 1, 2 and 3 of the Macomb County Records.

RECORDED IN MACOMB COUNTY RECORDS 2105 P. M. JUL 18 1977

Herbert L. Avey
 CLERK - RECORDS & FINANCE
 MACOMB COUNTY, MICHIGAN

S.E. CORNER SECTION 13 T.2N., R.1E.

WITNESSES:

- SE. CORNER - FOUND 5/8" SQUARE BAR
- 117.39' N.W. TO PK. NAIL IN WASHER, E.N.E. FACE OF POWER POLE.
- 76.21' N.E. TO CENTER OF HOLE IN CENTER TOP OF GATE WELL.
- 88.60' N.E. TO CENTER LINE OF OPERATING NUT ON TOP OF FIRE HYDRANT.
- EAST 1/4 CORNER - FOUND 1/2" BAR
- 57.62' N.W. TO 16G NAIL IN WASHER, N.W. FACE UTILITY POLE.
- 41.98' E.S.E. TO 16G NAIL IN WASHER, S.W. FACE GUY POLE. 8.5' ABOVE GROUND.
- 39.13' EAST TO 16G NAIL IN WASHER, S. FACE UTILITY POLE.

URBAN LAND CONSULTANTS

LEGEND
 F.I.S. = Found Iron Pin
 F.I.P. = Found Iron Pipe
 F.I.C. = Found Iron Cap
 D. = Record Distance
 M. = Measured Distance

Herbert L. Avey
 SURVEYOR

Date 7/11/77
 Drawn H.C.
 Check
 Sheet 100
 Plat No. 156
 7775-27

LIBER 04799 PD 506

LAND CORNER RECORDATION CERTIFICATE
Filing Requirement of Act 74, Mich. P.A. 1970

B429518

or corners in

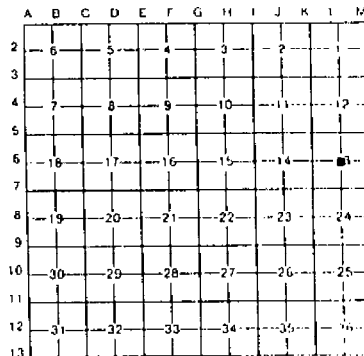
Macomb County	Located In:	Corner Code #11
Public Land Survey	T 2N R 12E	L-6
	T R	M-6
	T R	
	T R	
Property Controlling in Section	S T R	
Miscellaneous Property in Sec.	S T R	

Register of Deeds Stamp & File Number

- 1. Lot No. Recorded Plat
- 2. Private Claims

Raymond J. Donnelly, in a field survey on May 22, 1989, hereby certify that under requirements of P.A. 74, Michigan P.A. of 1970, the corner points mentioned in lines 1 and 2 above were in conformance with regulations and rules therefore as required in the current manual of survey instructions of the United States Department of the Interior, Bureau of Land Management or by a decree of a Court of Law and/or that the corner points mentioned in lines 3, 4 and 5 above were in conformance with the rules of the Michigan Board of Land Surveyors or by a Decree of a Court of Law, established, re-established, monumented, re-monumented, recovered, found as expressed below.

NOTE: Not more than 4 corners, all in the same town and range, may be recorded on this certificate.



Sterling Township

A. Description of original monument and accessories and/or subsequent restoration:

L-6 Found 1/2" Iron in Monument Box, Centerline Saal Rd & Stadler Rd.
 NE - 72.63' - PK in Utility Pole
 SE - 84.99' - PK in 4" Poplar
 SW - 90.40' - PK in Utility Pole
 NW - 33.18' - PK in Utility Pole

Recorded Corner Certificate Liber 2918, Page 57, Macomb County Records

M-6 Found 1/2" Iron
 ESE - 59.18' - Nail & washer in Utility Pole
 SE - 42.00' - Nail & washer in guide pole
 SW - 138.40' - Nail & washer in Utility Pole
 NW - 57.62' - Nail & washer in Utility Pole

Recorded Corner Certificate Liber 2918, Page 56, Macomb County Records

B. Description of corner evidence found and/or method applied in restoring or reestablishing corner:

L-6 Found 3/4" Iron Pipe in Monument Box
 M-6 Found 1/2" Iron Rod in centerline Hayes and Stadler Roads

RECORDED IN MACOMB COUNTY
 RECORDS AT: 10:23A M.

JAN 16 1990

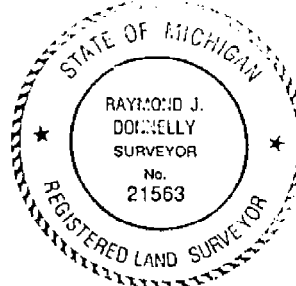
Edna Donnelly

CLERK - REGISTER OF DEEDS
 MACOMB COUNTY, MICHIGAN

C. Description of monument for corner and accessories established to perpetuate localizing the position of the corner:

L-6 Center post Section 13, Found 3/4" Iron Pipe in Monument Box
 Az 73 deg. - 72.77' - PK nail in Southeast face of Utility Pole
 Az 159 deg. - 57.01' - PK nail in concrete curb.
 Az 200 deg. - 90.68' - PK nail in Northwest face of Utility Pole
 Az 272 deg. - 27.27' - PK nail in North face of Utility Pole

M-6 East 1/2 Corner Section 13, Found 1/2 Iron Rod
 ESE - 59.20' - PK w/ tag in South face Utility Pole,
 SE - 41.84' - PK in Southwest face guy pole,
 NW - 73.68' - Centerline top nut on hydrant,



Signed by *Raymond J. Donnelly* Date *Jan. 12, 1990*
 Surveyor's Michigan License No. 21563

LAND CORNER RECORDATION CERTIFICATE

FILING REQUIREMENT OF ACT 74, MICH. P.A. 1970

STERLING HEIGHTS

A557684

FOR CORNERS OF: N.E. & E. 1/4 LOCATED IN: Sec 13

	T.	N.	R.	E.	CORNER CODE NUMBER
1. PUBLIC LAND SURVEY	2	X	12	X	M-5 M-6
2. PROPERTY CONTROLLING IN SECTION	13	2	X	12	
3. MISCELLANEOUS PROPERTY IN SECTION					
4. LOT NO. _____, RECORDED PLAT _____					
5. PRIVATE CLAIMS _____					

RECORDED IN MACOMB COUNTY RECORDS AT 10:52 a.m.
 JAN 23 1979
Edna M. ...
 CLERK - REGISTER OF DEEDS
 MACOMB COUNTY, MICHIGAN

REGISTER OF DEEDS STAMP AND FILING NUMBER

I, William E. Soderberg do hereby certify that under requirements of P.A. 74, Michigan P.A. of 1970, the corner points mentioned in lines 1 and 2 above (identified with circles on index code diagram - over) were, in a field survey on July 1978, established, re-established, monumented, re-monumented, recovered or restored as expressed below and in conformance with regulations and rules therefore as required in the current manual of survey instructions of the United States Department of the Interior, Bureau of Land Management or by a decree of a court of law. Furthermore, that the corner points mentioned in lines 3, 4 and 5 above were, in a field survey on _____ 19____, found, recovered, restored, established or re-established as expressed below and in conformance with the rules of the Michigan State Board of Registration for Land Surveyors or, by a Decree of a Court of law:

A. Description of original monument and accessories and/or subsequent restoration:

B. Description of corner evidence found and/or method applied in restoring or re-establishing corner:

M-5 FOUND 1 1/4" IRON M-6 FOUND 1/2" RE-ROD

C. Description of monument for corner and accessories established to perpetuate locating the position of the corner:

M-5 N.E. COR SEC 13
 4 SANITARY MANHOLE N.E. 62.95
 FOUND P.K. NAIL IN D.E. POLE N.E. 39.55
 FOUND NAIL & WASHER IN D.E. POLE S.E. 122.09
 FOUND DOUBLE HEADED NAIL & WASHER
 IN D.E. POLE N.W. 49.77

M-6 E 1/4 COR SEC 13
 FOUND P.K. NAIL IN N.E. FACE OF D.E.
 POLE N.W. 57.46 51.04
 TOP OF HYDRANT N.W. 73.13 12.71
 FOUND NAIL IN SOUTH FACE OF D.E. POLE
 EAST 59.24 41.32
 FOUND P.K. NAIL IN GUY POLE S.E. 41.98

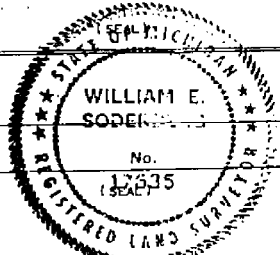
SIGNED BY William E. Soderberg DATE 12/21/79

SURVEYOR'S MICHIGAN REGISTRATION NO. 17635

FOR STATE AND UNITED STATES AGENCIES:

SIGNED BY _____ DATE _____
CHIEF OF SURVEY PARTY

APPROVED AND SIGNED BY _____ DATE _____
MICHIGAN REGISTERED LAND SURVEYOR

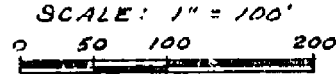
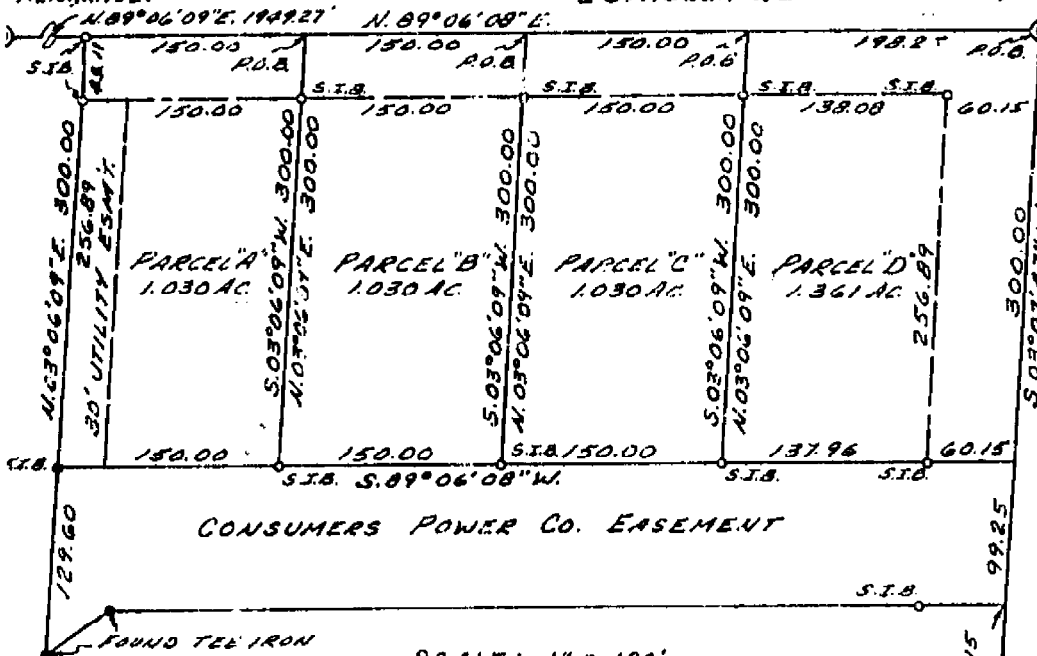


SURVEYOR'S MICHIGAN REGISTRATION NO. _____

00830

CEN. POST, SEC. 13, T.2N., R.12E. EAST 1/4 COR., SEC. 13, T.2N., R.12E.

STADLER RD.



S.E. CORNER SECTION 13 T.2N., R.12E. 2273.15

SURVEYOR'S CERTIFICATE

I hereby certify that I have surveyed and mapped the land above platted and/or described on July 11, 1977 and that the ratio of closure on the unadjusted field observations of such survey was 1/207,900 and that all of the requirements of P.E. 132 1970 have been complied with.

Bearings for this survey correspond to those of "Washington Square" subdivision on the north side of Stadler Road as recorded in Liber 66, Pages 1, 2 and 3 of the Macomb County Records.

- WITNESSES:
- CENTER POST - FOUND 1/2" PIPE AS RECORDED IN LIBER 2859, PAGE 588, M.C.R.
 - S.E. CORNER - FOUND 3/8" SQUARE BAR.
 - 117.39' N.W. TO P.K. NAIL IN WASHER, S.W.E. FACE OF POWER POLE.
 - 76.21' N.E. TO CENTER OF HOLE IN CENTER TOP OF GATE WALL.
 - 88.60' N.E. TO CENTER LINE OF OPERATING NUT ON TOP OF FIRE HYDRANT.
 - EAST 1/4 CORNER - FOUND 1/2" BAR.
 - 57.62' N.W. TO 16d NAIL IN WASHER, N.W. FACE UTILITY POLE.
 - 41.98' E.S.E. TO 16d NAIL IN WASHER, S.W. FACE GUY POLE. 2.5' ABOVE GROUND.
 - 59.13' EAST TO 16d NAIL IN WASHER, S. FACE UTILITY POLE.

RECORDED IN MACOMB COUNTY RECORDS AT: 2:05 P.M. OCT 13 1977

Edna
CLERK - REGISTER OF DEEDS MACOMB COUNTY, MICHIGAN

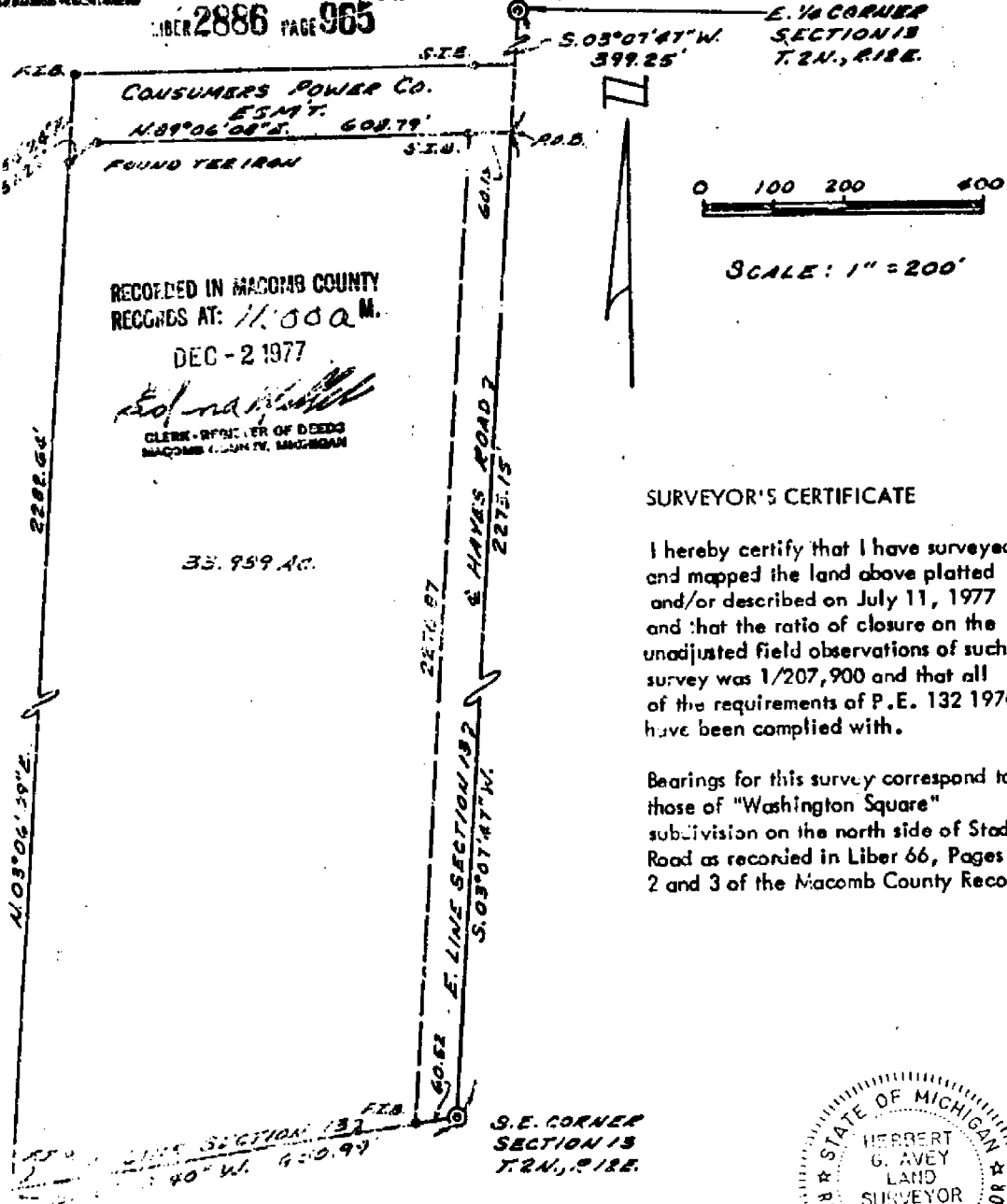


URBAN LAND CONSULTANTS

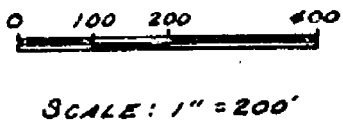
LEGEND
FID - Field Instrument
FID - Field Instrument
S.S. - Section 34
D - Easement
N - Easement
M - Easement

Hubert & Arvey
Hubert & Arvey
Registered Land Surveyors

Date 7/11/77
Drawn H.G.A.
Checked
Sheet 10 of 1
Field No. 135
Job No. 77715-277



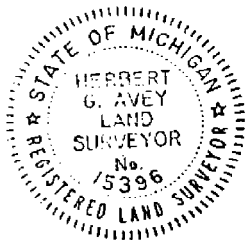
RECORDED IN MACOMB COUNTY
 RECORDS AT: 11:00 A.M.
 DEC - 2 1977
Edna M. ...
 CLERK - REGISTER OF DEEDS
 MACOMB COUNTY, MICHIGAN



SURVEYOR'S CERTIFICATE

I hereby certify that I have surveyed and mapped the land above platted and/or described on July 11, 1977 and that the ratio of closure on the unadjusted field observations of such survey was 1/207,900 and that all of the requirements of P.E. 132 1970 have been complied with.

Bearings for this survey correspond to those of "Washington Square" subdivision on the north side of Stadler Road as recorded in Liber 66, Pages 1, 2 and 3 of the Macomb County Records.



- WITNESSES:**
- SE CORNER - FOUND 5/8" SQUARE BAR
 117.30' N.W. TO R.K. NAIL IN WASHER, E.N.E. FACE OF POWER POLE.
 76.21' N.E. TO CENTER OF HOLE IN CENTER TOP OF GATE WELL.
 88.60' N.E. TO CENTER LINE OF OPERATING NUT ON TOP OF FIRE HYDRANT.
 - EAST 1/4 CORNER - FOUND 1/2" BAR
 57.62' N.W. TO 16d NAIL IN WASHER, N.W. FACE UTILITY POLE.
 61.98' E.S.E. TO 16d NAIL IN WASHER, S.W. FACE GUY POLE. 2.5' ABOVE GROUND.
 59.13' EAST TO 16d NAIL IN WASHER, S. FACE UTILITY POLE.

THIS SURVEY IS BEING RE-RECORDED TO CORRECT LOCATION OF SURVEY AND SUPERSEDES RECORDING IN LIBER 2867, PAGES 247 & 248.

<p>URBAN LAND CONSULTANTS PLANNERS AND SURVEYORS 3244 HALL AVENUE DECATUR, MICHIGAN 48827</p>	<p>LEGEND</p> <ul style="list-style-type: none"> FIB - Found Iron Bar FIP - Found Iron Pipe SIB - Set Iron Bar R - Record Distance M - Measured Distance 	<p><i>Herbert G. Avey</i> Herbert G. Avey Registered Land Surveyor 15396</p>	<p>Date 7/11/77 Drawn H.G.A. Check Sheet 1 of 2 Fld. Bk. 185 Job No. 77775-277</p>
--	---	--	---

LAND CORNER RECORDATION CERTIFICATE

FILING REQUIREMENT OF ACT 74, MICH. P.A. 1970

STERLING HEIGHTS

1557684

FOR CORNERS OF: N.E. & E. 1/4 LOCATED IN: Sec 13

	T.	N.	R.	E.	CORNER CODE NUMBER
1. PUBLIC LAND SURVEY	2	X	12	X	M-5 M-6
2. PROPERTY CONTROLLING IN SECTION	13	2	N.	12	
		X	R.	X	
3. MISCELLANEOUS PROPERTY IN SECTION					
4. LOT NO. _____, RECORDED PLAT _____					
5. PRIVATE CLAIMS _____					

RECORDED IN MACOMB COUNTY RECORDS AT 10:52 a.m.
 JAN 23 1979
[Signature]
 CLERK - REGISTER OF DEEDS
 MACOMB COUNTY, MICHIGAN

REGISTER OF DEEDS STAMP AND FILING NUMBER

I, William E. Soderberg do hereby certify that under requirements of P.A. 74, Michigan P.A. of 1970, the corner points mentioned in lines 1 and 2 above (identified with circles on index code diagram - over) were, in a field survey on July 1978, established, re-established, monumented, re-monumented, recovered or restored as expressed below and in conformance with regulations and rules therefore as required in the current manual of survey instructions of the United States Department of the Interior, Bureau of Land Management or by a decree of a court of law. Furthermore, that the corner points mentioned in lines 3, 4 and 5 above were, in a field survey on _____ 19____, found, recovered, restored, established or re-established as expressed below and in conformance with the rules of the Michigan State Board of Registration for Land Surveyors or, by a Decree of a Court of law:

A. Description of original monument and accessories and/or subsequent restoration:

B. Description of corner evidence found and/or method applied in restoring or re-establishing corner:

M-5 FOUND 1 1/4" IRON M-6 FOUND 1/2" RE-ROD

C. Description of monument for corner and accessories established to perpetuate locating the position of the corner:

M-5 N.E. COR SEC 13	M-6 E 1/4 COR SEC 13
♀ SANITARY MANHOLE N.E. 62.95	FOUND P.K. NAIL IN N.E. FACE OF D.E.
FOUND P.K. NAIL IN D.E. POLE N.E. 39.55	POLE N.W. 57.46
FOUND NAIL & WASHER IN D.E. POLE S.E. 122.09	TOP OF HYDRANT N.W. 73.13
FOUND DOUBLE HEADED NAIL & WASHER	FOUND NAIL IN SOUTH FACE OF D.E. POLE
IN D.E. POLE N.W. 49.77	EAST 59.24
	FOUND P.K. NAIL IN GUY POLE S.E. 41.98

SIGNED BY William E. Soderberg DATE 12/21/79

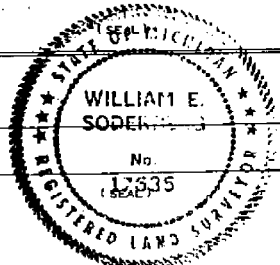
SURVEYOR'S MICHIGAN REGISTRATION NO. 17635

FOR STATE AND UNITED STATES AGENCIES:

SIGNED BY _____ DATE _____
CHIEF OF SURVEY PARTY

APPROVED AND SIGNED BY _____ DATE _____
MICHIGAN REGISTERED LAND SURVEYOR

SURVEYOR'S MICHIGAN REGISTRATION NO. _____



00830

LAND CORNER RECORDATION CERTIFICATE

FILING REQUIREMENT OF ACT 74, MICH. P.A.1970

City of Sterling Heights

FOR CORNERS OF--	LOCATED IN--	SEC. 13	CORNER CODE NUMBER
1. PUBLIC LAND SURVEY	T. 2	S. 12	E. M5, M6
2. PROPERTY CONTROLLING IN SECTION	T. _____	S. _____	E. _____
3. MISCELLANEOUS PROPERTY IN SECTION	T. _____	S. _____	E. _____
4. LOT NO. _____	RECORDED PLAT _____		
5. PRIVATE CLAIMS _____			

A483190

RECORDED IN MACOMB COUNTY RECORDS AT: 10:02 a.m.

11/R - 6 1978

Edna M. Hill
CLERK - REGISTER OF DEEDS
MACOMB COUNTY, MICHIGAN

REGISTER OF DEEDS STAMP AND FILING NUMBER

I, Robert J. Patterson, do hereby certify that under requirements of P.A. 74, Michigan P.A. of 1970, the corner points mentioned in lines 1 and 2 above were, in a field survey on December 8, 1977, established, re-established, monumented, re-monumented, recovered or restored as expressed below and in conformance with regulations and rules therefore as required in the current manual of survey instructions of the United States Department of the Interior, Bureau of Land Management or by a decree of a court of law. Furthermore, that the corner points mentioned in lines 3, 4 and 5 above were, in a field survey on _____, 19____, found, recovered, restored, established or re-established as expressed below and in conformance with the rules of the Michigan State Board of Registration for Land Surveyors or, by a Decree of a Court of law:

A. Description of original monument and accessories and/or subsequent restoration:

- M5 - Northeast Corner - Found 1/2" Iron Centerline of Hayes Road and 18 Mile Road - No data available
- M6 - East 1/4 Corner - Found 1/2" Iron - No data available

B. Description of corner evidence found and/or method applied in restoring or re-establishing corner:

- M5 - Matched Existing Legal Descriptions and Recorded Plats
- M6 - Matched Existing Legal Descriptions and Recorded Plats

C. Description of monument for corner and accessories established to perpetuate locating the position of the corner:

- M5 - Found 1/2" Iron-Witness Points- Set P.K. Nail in Utility Pole Northeasterly 86.16 ft.; found Nail and Washer in Utility Pole Southeasterly 122.08 ft.; Center of Top Nut on Hydrant Southwesterly 155.76 ft.; Found Nail and Washer in Utility Pole Northwesterly 49.80 ft.
- M6 - Found 1/2" Iron-Witness Points-found Nail and Washer in Utility Pole East-Southeasterly 59.18 ft.; Found Nail and Washer in Guide Pole Southeasterly 42.00 ft.; Found Nail and Washer in Utility Pole Southwesterly 138.40 ft.; Found Nail and Washer in Utility Pole Northwesterly 57.62 ft.

SIGNED BY Robert J. Patterson DATE Jan. 4, 1978

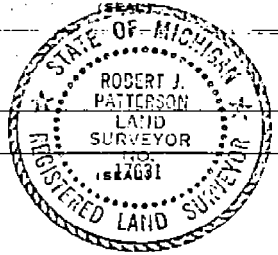
SURVEYOR'S MICHIGAN REGISTRATION NO. 17631

FOR STATE AND UNITED STATES AGENCIES:

SIGNED BY _____ DATE _____

APPROVED AND SIGNED BY _____ DATE _____

SURVEYOR'S MICHIGAN REGISTRATION NO. _____



00716

RIVENDELL

SUBDIVISION NO. 2

R OF SECTION 13, TOWN 2 NORTH,
HEIGHTS, MACOMB COUNTY, MICHIGAN

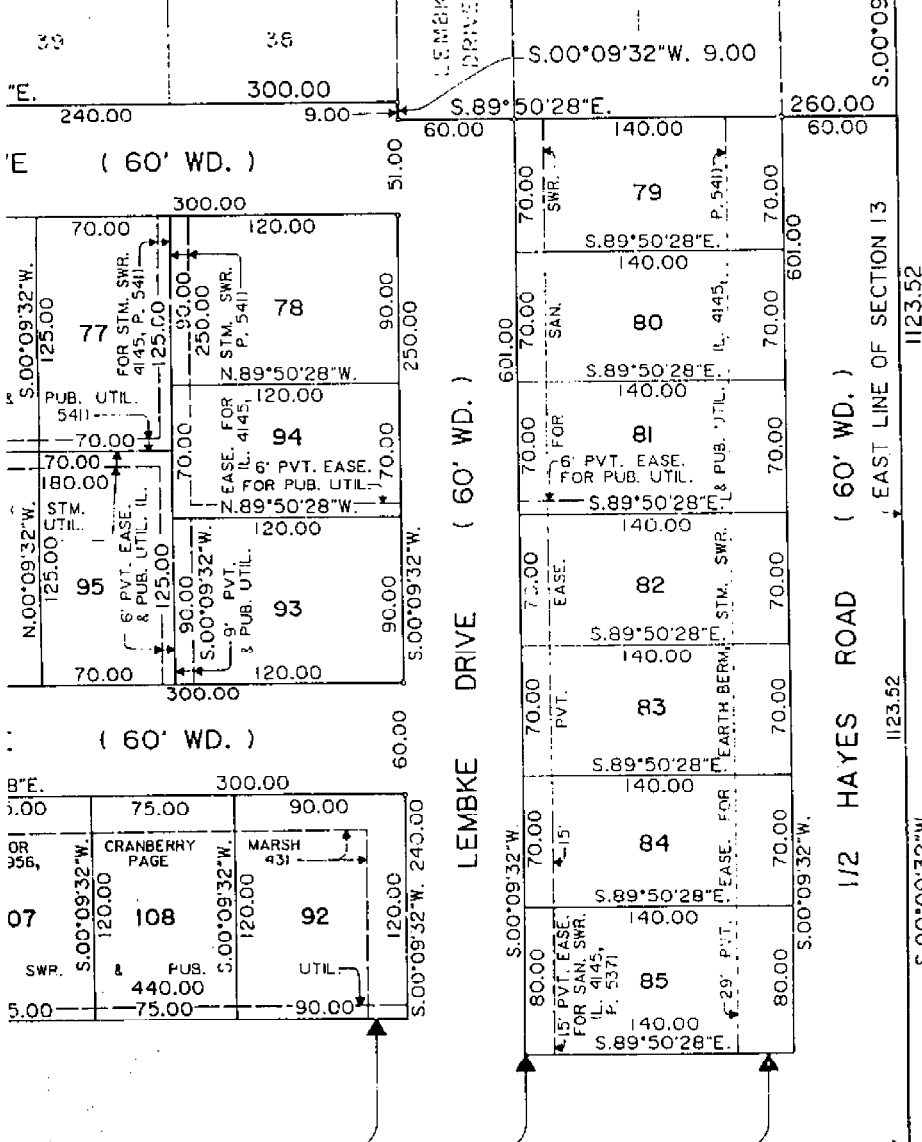
L84 P. 38
M-6
M-7

EAST QUARTER POST
OF SECTION 13, TOWN 2
NORTH, RANGE 12 EAST
CITY OF STERLING HGTS.
MACOMB COUNTY, MICH.



RIVENDELL SUBDIVISION

DECEMBER 22, PAGES 39-42



1123.52
EAST LINE OF SECTION 13
1123.52

UNPLATTED



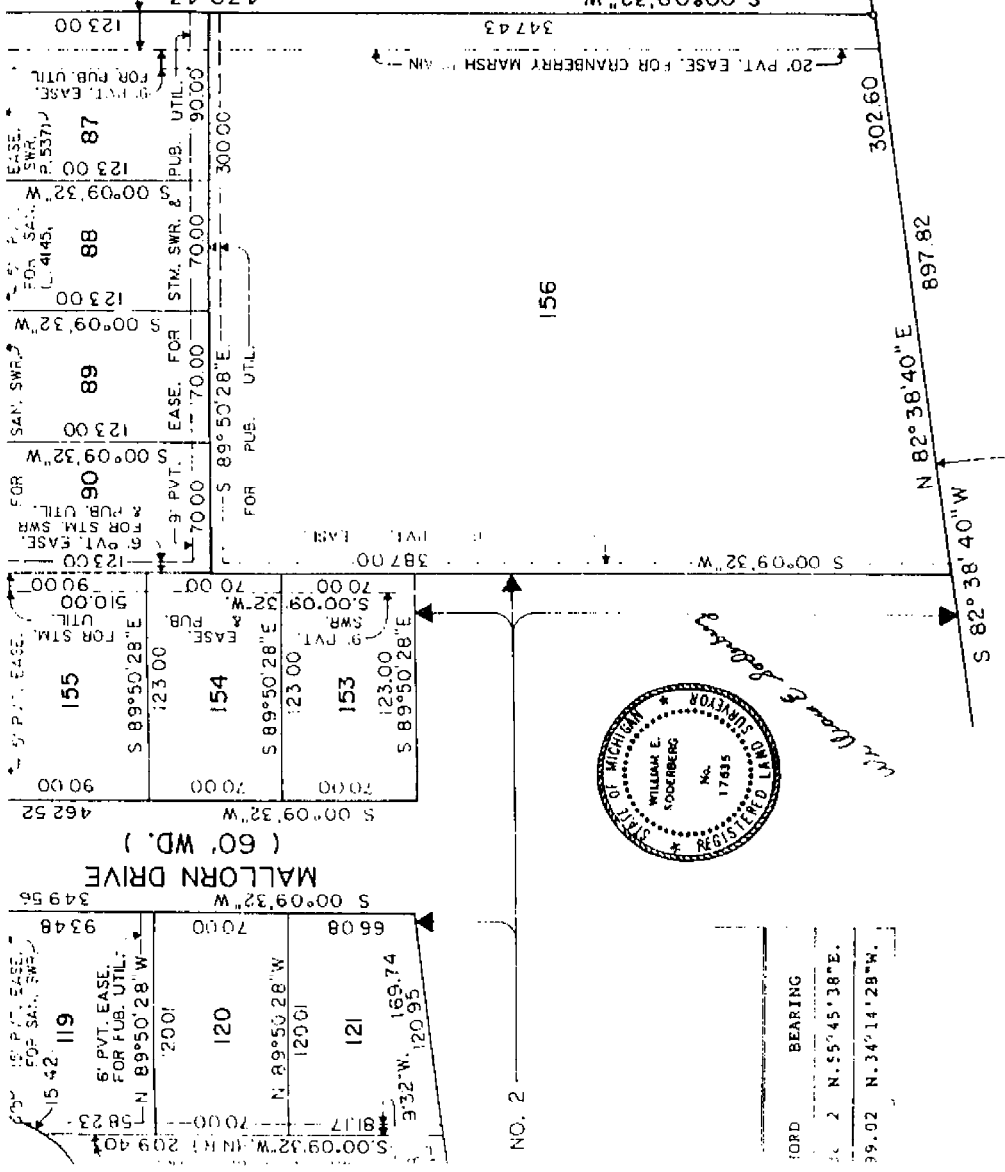
NO.	DEL
9.	03° 5
10.	03° 5
14.	03° 5
15.	01° 1

SEE SHEET NO. 1

S. 3 of 6

RIVENDELL SUBDIVISION KEY PLAN

NO. 2
L84 P. 35
M-7
M-6



1123.52
S 00° 09' 32" W
470.43
123.00

SOUTHEAST CORNER SECTION 13
TOWN 2 NORTH, RANGE 12 EAST,
CITY OF STERLING HEIGHTS,
MACOMB COUNTY, MICHIGAN

POINT OF BEGINNING

SOUTH LINE OF SECTION 13



CORD	BEARING
120.01	N 89°50'28"W
121	N 55°45'38"E
39.02	N 34°14'28"W

PLAT LEGEND

ALL DIMENSIONS ARE IN FEET.
ALL CURVILINEAR DIMENSIONS ARE SHOWN
IN CHORD DISTANCES.
(R.R.) DENOTES NON-RADIAL LINES.
4" DIA. CONCRETE MONUMENT 36" LONG WITH
1/2" REBAR AFF INDICATED BY "R".
ALL LOT CORNERS HAVE BEEN MARKED BY
1/2" REBARS, 18" LONG WITH PLASTIC
CAP NO. 17635.
BEARINGS ARE RELATED TO "RIVENDELL
SUBDIVISION" AS RECORDED IN LIBER 82
OF PLATS, PAGES 39 THRU 42, INCLUSIVE,
MACOMB COUNTY RECORDS.
THERE SHALL BE NO DIRECT VEHICULAR
ACCESS FROM LOTS 79 TO 87 INCLUSIVE,
TO HAYES ROAD AND FROM LOTS 142 TO
145 INCLUSIVE TO CLINTON FIVE ROAD.

ANDERSON, ECKSTEIN AND WESTRICK, INC.
CIVIL ENGINEERS AND LAND SURVEYORS
MOUNT CLEMENS, MICHIGAN 48044



SHEET 1 OF 6

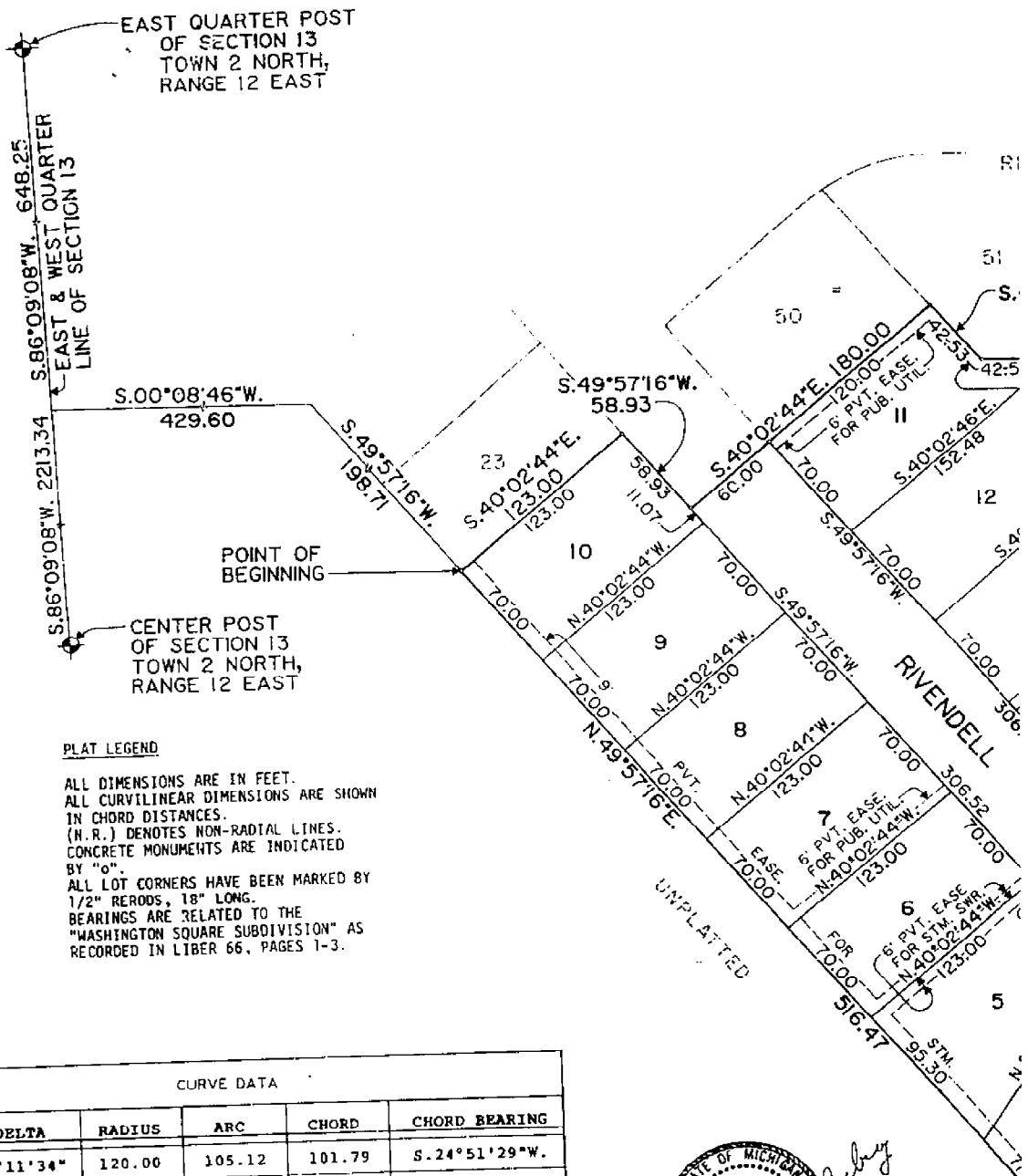
L84 P. 35

4379 Pages 641 thru 657

RIVENDELL ESTATES SU

PART OF THE SOUTHEAST QUARTER OF SECTION 13, TOWN 2 NORTH, RANGE 12 EAST, MACOMB COUNTY, MICHIGAN

L 83 P 24
T 2 N R 12 E
L 6
M 6



PLAT LEGEND

ALL DIMENSIONS ARE IN FEET.
ALL CURVILINEAR DIMENSIONS ARE SHOWN IN CHORD DISTANCES.
(N.R.) DENOTES NON-RADIAL LINES.
CONCRETE MONUMENTS ARE INDICATED BY "o".
ALL LOT CORNERS HAVE BEEN MARKED BY 1/2" REERODS, 18" LONG.
BEARINGS ARE RELATED TO THE "WASHINGTON SQUARE SUBDIVISION" AS RECORDED IN LIBER 66, PAGES 1-3.

CURVE DATA

NO.	DELTA	RADIUS	ARC	CHORD	CHORD BEARING
1.	50°11'34"	120.00	105.12	101.79	S. 24°51'29"W.
2.	50°11'34"	180.00	157.69	152.69	S. 24°51'29"W.
3.	57°12'10"	60.00	59.90	57.45	N. 57°40'48"E.
4.	253°48'03"	60.00	265.78	95.96	N. 24°01'15"W.
5.	16°35'53"	60.00	17.38	17.32	S. 85°25'11"E.
6.	49°38'17"	180.00	155.95	151.11	N. 68°53'59"W.
7.	47°35'20"	120.00	99.67	96.83	S. 66°31'43"E.



Restrictions Liber 4260 Pg

ANDERSON, ECKSTEIN & WESTRICK, INC.
42000 GARFIELD ROAD
MT. CLEMENS, MICH. 48044

Certificate of Survey

A574303
PHONE NUMBER
(313) 286-1234

T2N, R12E
M-5
M-6

NORTHEAST CORNER
OF SECTION 13, T. 2N.,
R. 12E.

"WASHINGTON SQUARE SUBDIVISION"
LIBER 66, PAGES 1, 2, AND 3
(MACOMB COUNTY RECORDS)
8 7 6 5 4 3 2
(S. 89° 49' 00" E. 654.56 Record)
N. 89° 18' 30" E. 655.24'

10
11
12
13
14
15
16
17
18
19

FOUND MONUMENT
456.64 Record
456.61'
FOUND MONUMENT
N. 100° 22' 48" E.
SET MONUMENT
N. 100° 22' 40" E. 785.96'

91° 04' 13"



88° 37' 00"

(6.93 ACRES RECORD)

RECORDED IN MACOMB COUNTY
RECORDS AT: 11:08 AM.

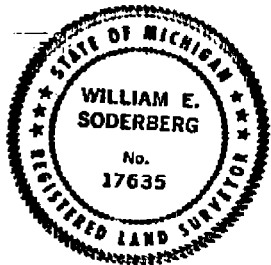
APR 17 1979

Edna M. Hill
CLERK - REGISTER OF DEEDS
MACOMB COUNTY, MICHIGAN

90° 30' 30"

N. 89° 49' 00" W. 652.58'

(652.15' Record)



SET MONUMENT
WESTERLY 60' RIGHT OF WAY LINE
465.71'
466.63' F.
POINT OF BEGINNING
5:30' 41' 30" W.
125.72'

FOUND P.K. NAIL

EMAYES ROAD (150' WIDE)
EAST LINE SECTION 13

EAST QUARTER
CORNER SECTION 13,
T. 2N., R. 12E.

FOUND MONUMENT
AT THE NORTHEAST
CORNER OF MEMORIAL
DRIVE

DRAWN BY: M.C.D.

CERTIFIED TO ST. MICHAELS CATHOLIC COMMUNITY
ADDRESS 35750 MORAVIAN
CITY & STATE FRASER MICHIGAN 48026
DATE SURVEYED JULY 10, 1978
SCALE: 1" EQUALS 100'

STATE OF MICHIGAN 18071
I, *William E. Soderberg*, have surveyed and mapped the land
above and that the ratio of closure on the unadjusted field observations
of this survey was 1:20,500 and that all of the re-
quirements of Public Act 127 of 1970 have been complied with.
Bearings and distances were determined as follows:
FROM MEMORIAL DEED LIBER 1405,
PAGE 40, MACOMB COUNTY RECORDS.
William E. Soderberg
WILLIAM E. SODERBERG #17635 REGISTERED LAND SURVEYOR
SHEET 1 OF 2

A641978

Ret to:

ANDERSON, ECKSTEIN & WESTRICK, INC.
4200 GARFIELD ROAD
MT. CLEMENS, MICH. 48044

PHONE NUMBER
(313) 268-1234

Certificate of Survey

PART OF THE NORTHEAST QUARTER
OF SECTION 13, TOWN 2 NORTH, RANGE
12 EAST, CITY OF STERLING HEIGHTS
MACOMB COUNTY, MICHIGAN.

T2N, R12E
M-5
M-6
L-6



EAST LINE OF "WASHINGTON SQUARE SUBDIVISION"
(LIBER 66, PAGES 1, 2 & 3)

S. 89° 49' 00" E. 652.58'

FOUND IRON

NORTHEAST CORNER
OF SECTION 13, T2N,
R. 12E, CITY OF STERLING
HEIGHTS.

878.55'

N. 00° 21' 30" E.

FOUND
MONUMENT

SET IRON

SET P.K. NAIL

± 15.75 ACRES

RECORDED IN MACOMB COUNTY
RECORDS AT: 12:20 P. M.
MAR 17 1980

Edna M. Hall
CLERK - REGISTER OF DEEDS
MACOMB COUNTY, MICHIGAN

SET IRON

N. 89° 48' 32" W.
167.22'

N. 00° 21' 48" E.
254.06'

SET IRON

SET IRON

33' RIGHT OF WAY LINE

33' RIGHT OF WAY LINE

S. 00° 41' 30" W.
1103.39'

EAST LINE SECTION 13

FOUND IRON '65 ROAD (66' WIDE)

EAST QUARTER POST SECTION 13
T. 2N., R. 12E., CITY OF STERLING HEIGHTS

S. 86° 41' 00" W. 479.95'

EAST AND WEST QUARTER LINE SECTION 13
STADLER ROAD (66' WIDE)

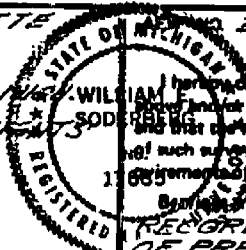
POINT OF
BEGINNING

CENTER POST SECTION 13
T. 2N., R. 12E., CITY OF
STERLING HEIGHTS

DESCRIPTION: SEE SHEET NO 2

DRAWN BY: M.C.D.

CERTIFIED TO EDWARD DELMOTTE
ADDRESS 40375 HAYES ROAD
CITY & STATE STERLING HEIGHTS, MICH.
TOWNSHIP CITY OF STERLING HEIGHTS
SECTION 13
COUNTY MACOMB



I hereby certify that I have surveyed and mapped the land
described on MARCH 10 19 80
and that the ratio of closure on the unadjusted field observations
is 1/21,000 and that all of the re-
quirements of Public Act 132, of 1970 have been complied with.

Best bearings shown on this survey were determined as follows:
REGARD BEARING OF HAYES ROAD
OF PREVIOUS PROPERTY DESCRIP-
TION

William E. Soderberg
WILLIAM E. SODERBERG #17838 REGISTERED LAND SURVEYOR

SCALE 1" EQUALS 200'

