

LAND CORNER RECORDATION CERTIFICATE
Filing Requirement of Act 74, Mich. P.A. 1970

For corners in

Macomb Located In: Erin\Lake Township Corner Code #G9
 (County)

1. Public Land Survey T 1N R 13E G9
 T ___ R ___
 T ___ R ___
 T ___ R ___

2. Property Controlling S ___ T ___ R ___
 in Section S ___ T ___ R ___

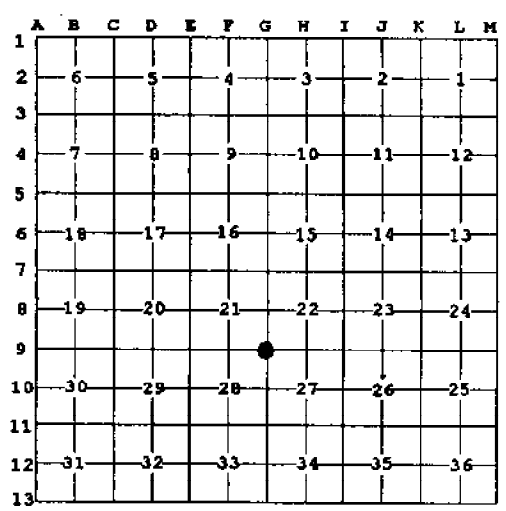
3. Miscellaneous S ___ T ___ R ___
 Property in Sec. S ___ T ___ R ___

Register of Deeds Stamp & File Number

4. Lot No. _____, Recorded Plat _____
 5. Private Claims _____

I, Craig P. Amey, in a field survey on August 8, 1995 do hereby certify that under requirements of P.A. 74, Michigan P.A. of 1970, the corner points mentioned in lines 1 and 2 above were in conformance with regulations and rules therefore as required in the current manual of survey instructions of the United States Department of the Interior, Bureau of Land Management or by a decree of a Court of Law and /or that the corner points mentioned in lines 3, 4 and 5 above were in conformance with the rules of the Michigan Board of Land Surveyors or by a Decree of a Court of Law; established, re-established, monumented, re-monumented, recovered, found as expressed below:

NOTE: Not more than 4 corners, all in the same town and range, may be recorded on this certificate.



A. Description of original monument and accessories and/or subsequent restoration:
 1818 GLO Wooden post William Preston No witnesses remain

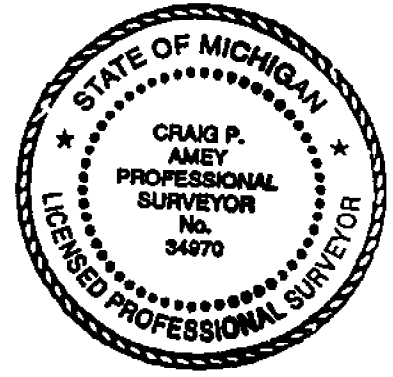
B. Description of corner evidence found and/or method applied in restoring or reestablishing corner:
 Found PK nail in the intersection of the physical centerlines of Little Mack Road and 10 Mile Road. During excavation of Little Mack Road, an iron pipe of the type commonly used for surveys in this area was found 0.40' east of the PK nail. Further excavation beneath revealed the bottom portion of a wooden stake, encased in moist clay, 0.40' south of the iron pipe. The stake was approximately one foot long and squared and burnt like an original corner stake. Due to the proximity of the stake and the appearance of the stake, I believe it is the original post. The post was removed, before continued excavation of Little Mack Road and replaced with a 1/2" iron with cap #34970 at a depth of 2.5' below the existing pavement.

N 2695.91 East quarter post of section 21 (G8) (GLO = 40ch)
 S 2713.86 East quarter post of section 28 (G10) (GLO = 40ch)

C. Description of monument for corner and accessories established to perpetuate locating the position of the corner:
 SET A 3/4" X 24" IRON WITH MCR CAP #34970 IN A NEW MONUMENT BOX
 AZ 40° 73.57 Found PK nail and MSHD tag in the northwest face of a utility pole
 AZ 154° 74.93 Chiseled "X" in the north edge of a MBT manhole at the intersection of walks
 AZ 235° 72.91 Chiseled "X" in the north edge of a sanitary manhole rim in walk
 AZ 320° 65.35 Chiseled "X" in the north edge of a DE manhole

The selected location is accepted by me and is generally accepted by professional surveyors as the best available evidence of the position of the original corner.

ACCEPTED BY THE MACOMB COUNTY SURVEY PEER GROUP AS THE OFFICIAL CORNER UNDER MICHIGAN PUBLIC ACT 345 OF 1990 AT A MEETING HELD ON 8-15-95
William E. Soderberg
 WILLIAM E. SODERBERG, P.S., CHAIRMAN



Signed by C. P. Amey Date 12-15-95
 Surveyor's Michigan License No. 34970

FORM APPROVED BY MICHIGAN STATE BOARD OF LAND SURVEYORS, JAN. 28, 1971

PROJECT N° : 223.015
 DESCRIPTION: MAC. RUMON
 69

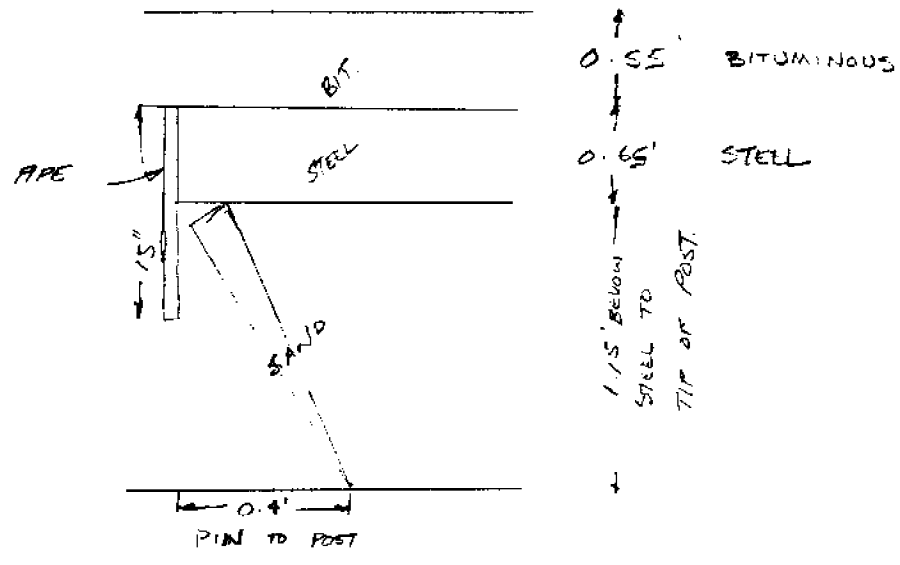
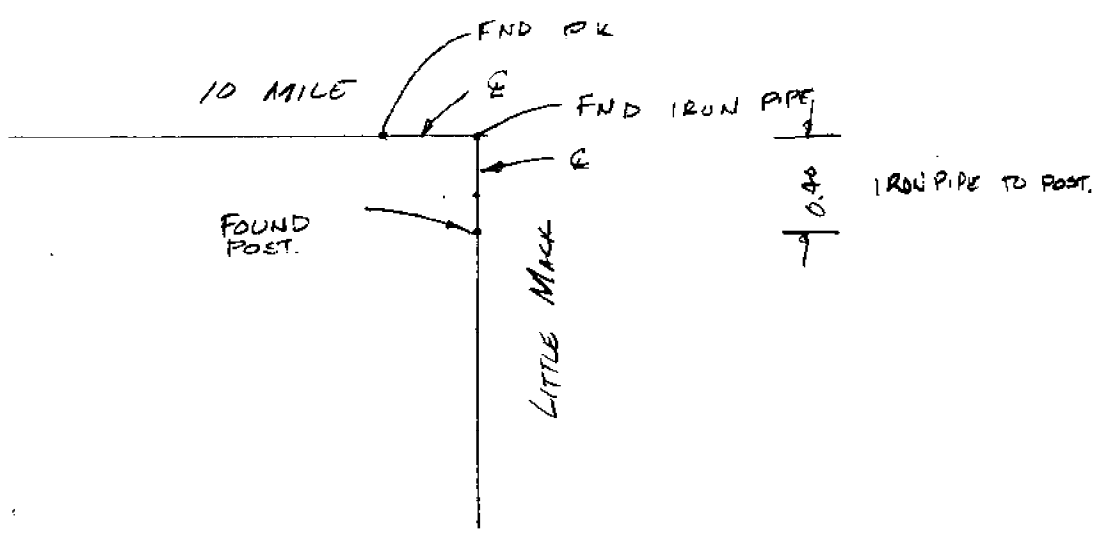


INDICATE
 NORTH

DATE: 5-11-95
 CREW: CPA FFG JP NAM
 PAGE N°: 1 OF 1

5-11-95 BUD GLADSTONE
 MIKE MODZELLWSKI
 JEFF POTTER

← 0.40' → PK TO 1201.



(313) 726-1234

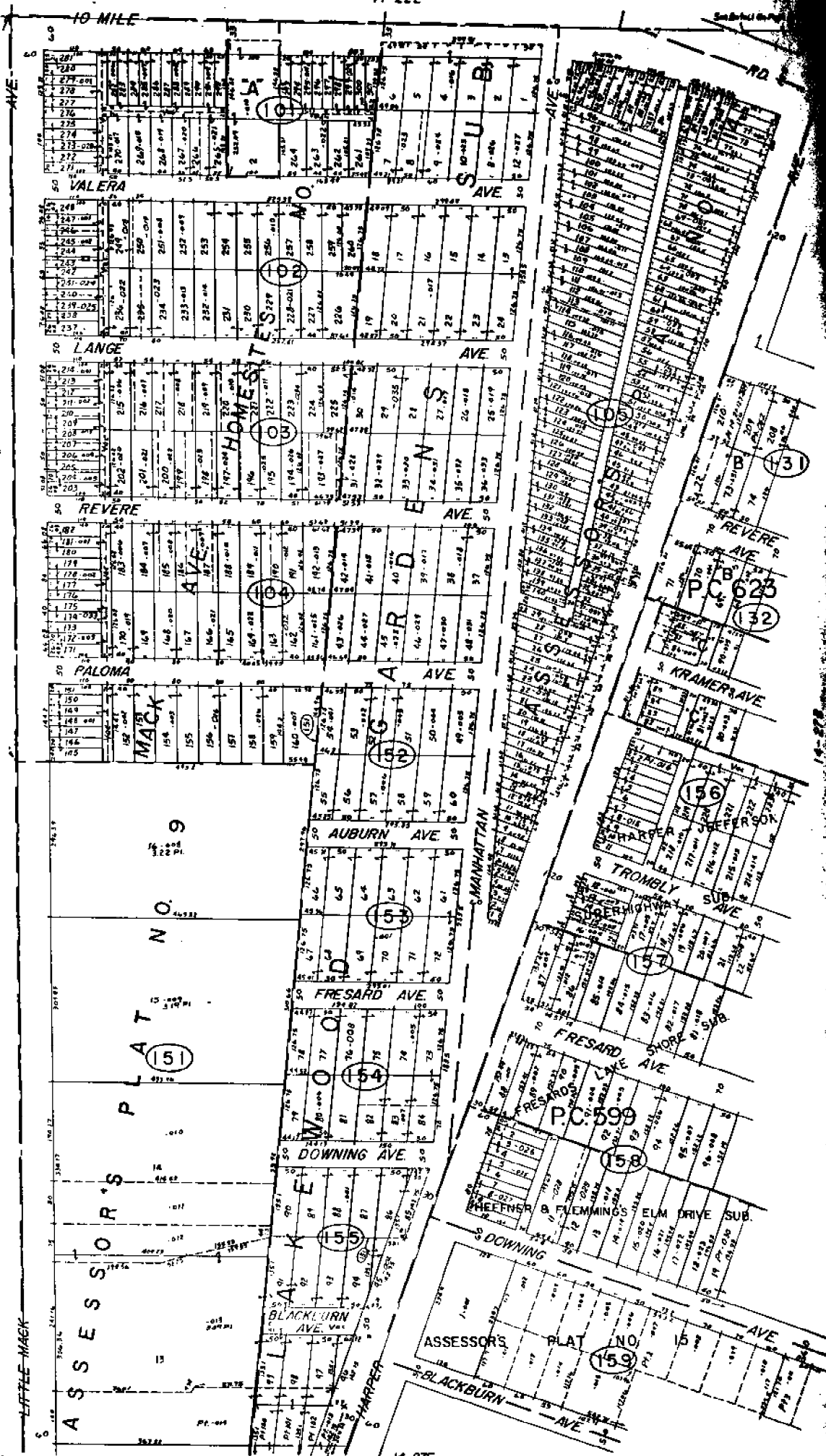
ANDERSON, ECKSTEIN & WESTRICK, INC.



Civil Engineers
 Land Surveyors

ROSEMAN'S PLAT NO 15
 GILMORE & CHIVENELLES
 JEFFERSON AVE SUB
 ROSEMAN'S PLAT NO 15

14-22E



14-28D

14-27E

REV. 7-7
 REV. 4-10
 REV. 3-37
 REV. 5-74

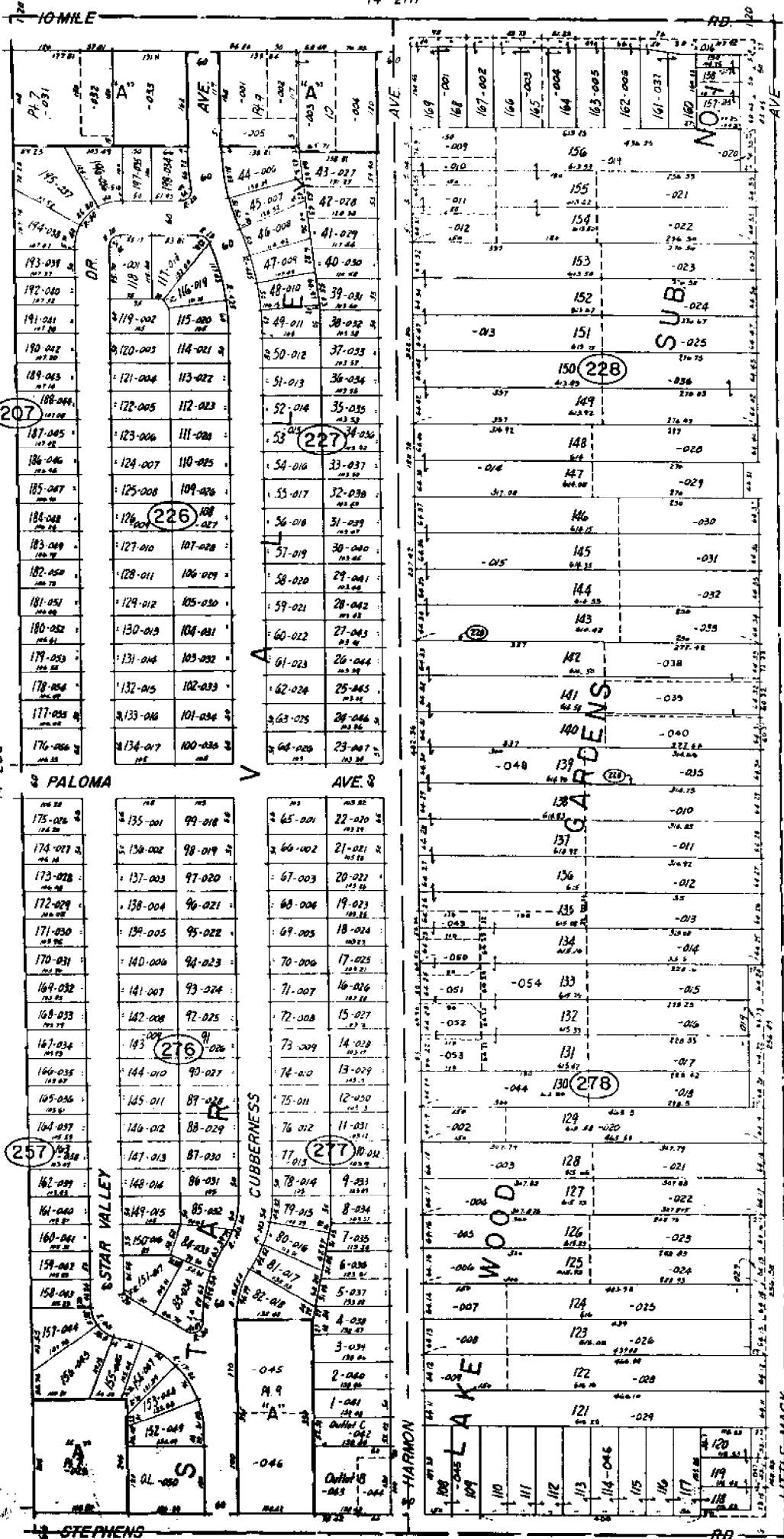
SCALE: 1" = 100'
 1881
 14-27A

Copyright 1974
 MACOMB COUNTY, MICHIGAN

ST. CLAIR SHORES

W. 1/2 N.W. 1/4 SEC 27 & PT. P.C. 599, 623 T.1N. R.13E.

REV. 7
 REV. 4
 REV. 1
 REV. 5



ASSESSOR'S PLAT NO. 12

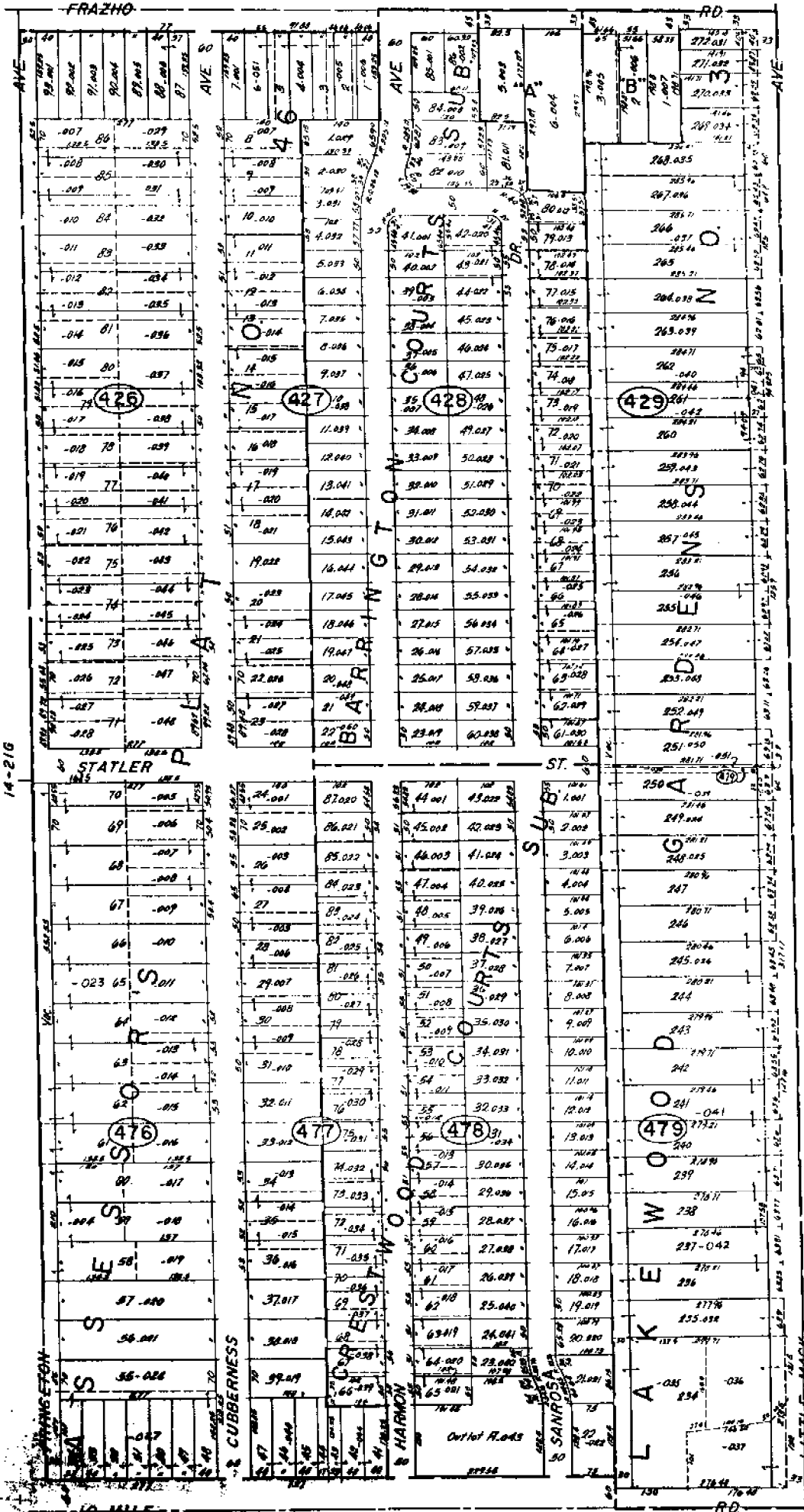
14-28C

14-27A

ST. CLAIR SHORES
 E. 1/2 N.E. 1/4 SEC. 28 T.1N. R.13E.

COPYRIGHT 1978 MACOMB COUNTY, MICHIGAN

SCALE: 1" = 100'
 1892
 14-28D



ASSASSOR'S PLAT
NO. 17
"D"
VIVONETTO SUB

14-216

14-22E

1/2 MILE

14-280

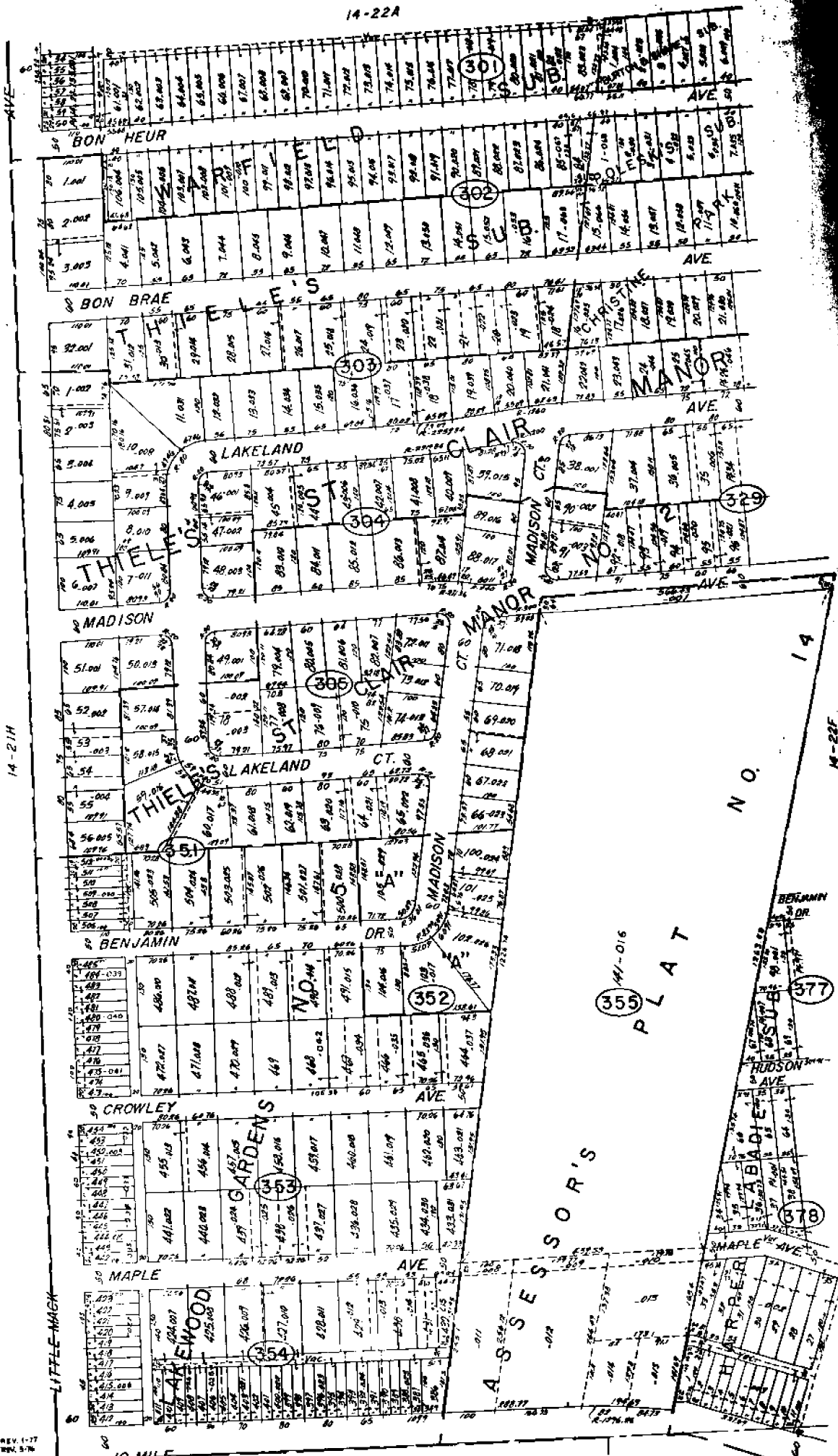
ST. CLAIR SHORES
E. 1/2 S.E. 1/4 SEC. 21 T. 1N. R. 13E.

Copyright 1978
MACOMB COUNTY, MICHIGAN

SCALE: 1" = 100'
1862
14-21H

14-22A

THIELS & CLAIR MANOR NO. 3



ST. CLAIR SHORES
W. 1/2 SW. 1/4 SEC. 22 T. 1 N. R. 13 E.

SCALE: 1" = 100'
1867
14-22E

Copyright 1973
MADONN COUNTY, MICHIGAN

14-27A

REV. 5
REV. 4
REV. 3