

LAND CORNER RECORDATION CERTIFICATE
Filing Requirement of Act 74, Mich. P.A. 1970

For corners in

Macomb Located In: Erin Lake Township
 (County) Corner Code # G8

1. Public Land Survey T 1N R 13E G8
 T ___ R ___
 T ___ R ___
 T ___ R ___
 2. Property Controlling S ___ T ___ R ___
 in Section S ___ T ___ R ___
 3. Miscellaneous S ___ T ___ R ___
 Property in Sec. S ___ T ___ R ___

Register of Deeds Stamp & File Number

4. Lot No. _____, Recorded Plat _____
 5. Private Claims _____

I, Craig P. Amey, in a field survey on August 8, 1995 do hereby certify that under requirements of P.A. 74, Michigan P.A. of 1970, the corner points mentioned in lines 1 and 2 above were in conformance with regulations and rules therefore as required in the current manual of survey instructions of the United States Department of the Interior, Bureau of Land Management or by a decree of a Court of Law and for that the corner points mentioned in lines 3, 4 and 5 above were in conformance with the rules of the Michigan Board of Land Surveyors or by a Decree of a Court of Law; established, re-established, monumented, re-monumented, recovered, found as expressed below:

	A	B	C	D	E	F	G	H	I	J	K	L	M
1													
2	6		5		4		3		2		1		
3													
4	7		8		9		10		11		12		
5													
6	16		17		16		15		14		13		
7													
8	19		20		21		22		23		24		
9													
10	30		29		28		27		26		25		
11													
12	31		32		33		34		35		36		
13													

NOTE: Not more than 4 corners, all in the same town and range, may be recorded on this certificate.

A. Description of original monument and accessories and/or subsequent restoration:
 1818 GLO William Preston No witnesses remain


B. Description of corner evidence found and/or method applied in restoring or reestablishing corner:
 Found PK nail in the intersection of the physical centerlines of Little Mack Road and Frazho Road
 This corner verified by:

- "Lakewood Gardens No. 3", as recorded in Liber 8, Page 33, Macomb County Records.
 The east line of this subdivision extends from the southeast corner of section 21 (G9) to the west quarter post of section 21 (G8). The record distance is 2694.62 feet and the measured distance is 2697.51 feet..
- "Coussement Subdivision", as recorded in Liber 38, Page 37, Macomb County Records.
 The record angle subtended by Frazho Road and Little Mack Road is 89°50'00". The measured angle is 89°47'04"
- "Lakewood Gardens No. 3", as recorded in Liber 8, Page 33, Macomb County Records.
 The record angle subtended by Frazho Road and Little Mack Road is 89°44'. The measured angle is 89°51'36"

N 2696.75 Northeast corner of section 21 (G7) (GLO = 40ch)
 S 2694.51 Southeast corner of section 21 (G9) (GLO = 40ch)

C. Description of monument for corner and accessories established to perpetuate locating the position of the corner:
 REPLACED PK WITH 3/4" X 24" IRON WITH MCR CAP #34970 IN A NEW MONUMENT BOX
 AZ 133° 39.03 Set PK nail and CPA tag in the southwest face of a utility pole
 AZ 58° 43.85 Set PK nail and CPA tag in the south side of a 22" maple
 AZ 310° 61.31 Found PK nail and MSHD tag in the north face of a utility pole
 AZ 262° 72.58 Chiseled "X" in the north rim of a catch basin

The selected location is accepted by me and is generally accepted by professional surveyors as the best available evidence of the position of the original corner.

ACCEPTED BY THE MACOMB COUNTY SURVEY PEER GROUP AS THE OFFICIAL CORNER UNDER MICHIGAN PUBLIC ACT 345 OF 1980 AT A MEETING HELD ON 8-15-95

 WILLIAM E. SODERBERG, P.S., CHAIRMAN



Signed by C. P. Amey Date 12-15-95

Surveyor's Michigan License No. 34970

FORM APPROVED BY MICHIGAN STATE BOARD OF LAND SURVEYORS, JAN. 28, 1971

REVISED MAY 14, 1975
 REVISED JAN. 1983

LAKEWOOD GROVE

A PART OF THE E 1/2 OF THE E 1/2 OF LAKE TWA MACCO

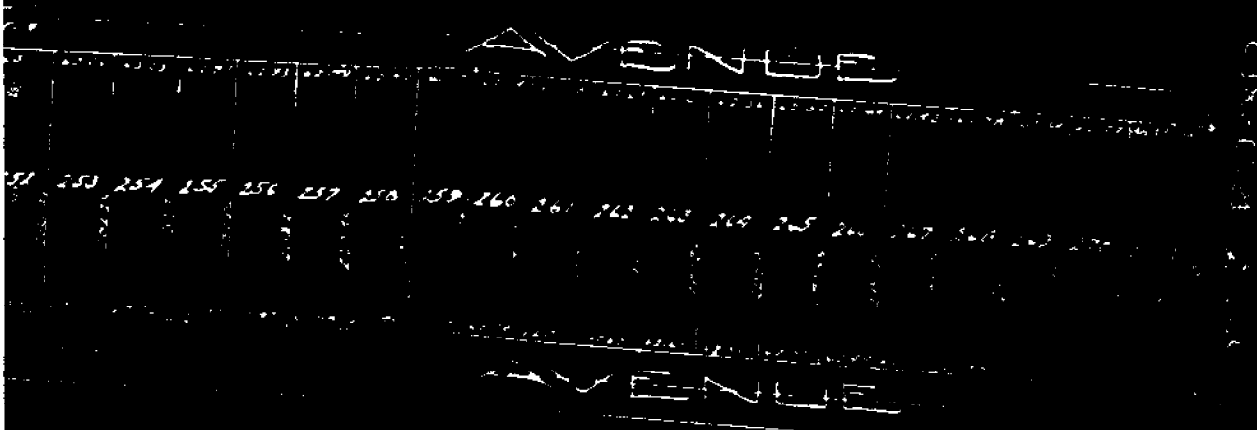
SCALE
1" = 200'



now all men by these provisions, that the...
 as provided, have...
 to the...
 only...
 the...
 the...
 the...

ARDENS **NO. 1**
 OF THE SE 1/4 OF SEC. 21, T14N, R13E.
OMB CO. **MICH.**

Sept 18-1921
 to W. LEHNER REG. OF
 MOUNT. CLEMENS, MICH.



Description of Land Plats.
 as recorded in the original Plat of ...
 ...
 ...
 ...

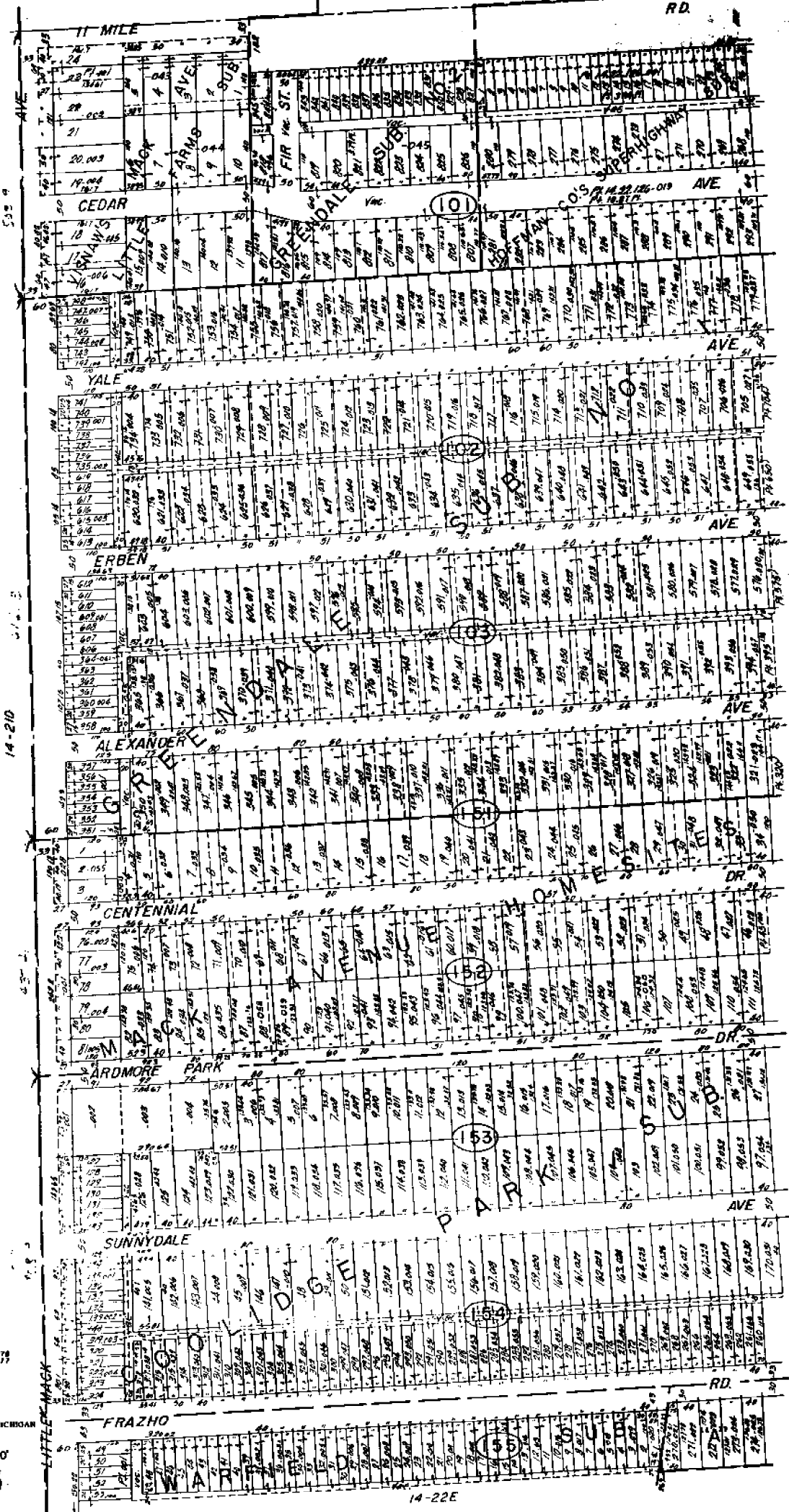
ST. CLAIR SHORES
W. 1/2 NW. 1/4 SEC. 22 T. 1N. R. 13E.

REV. 7-79

Copyright 1973
MACOMB COUNTY, MICHIGAN

SCALE: 1" = 100'

1863
14-22A



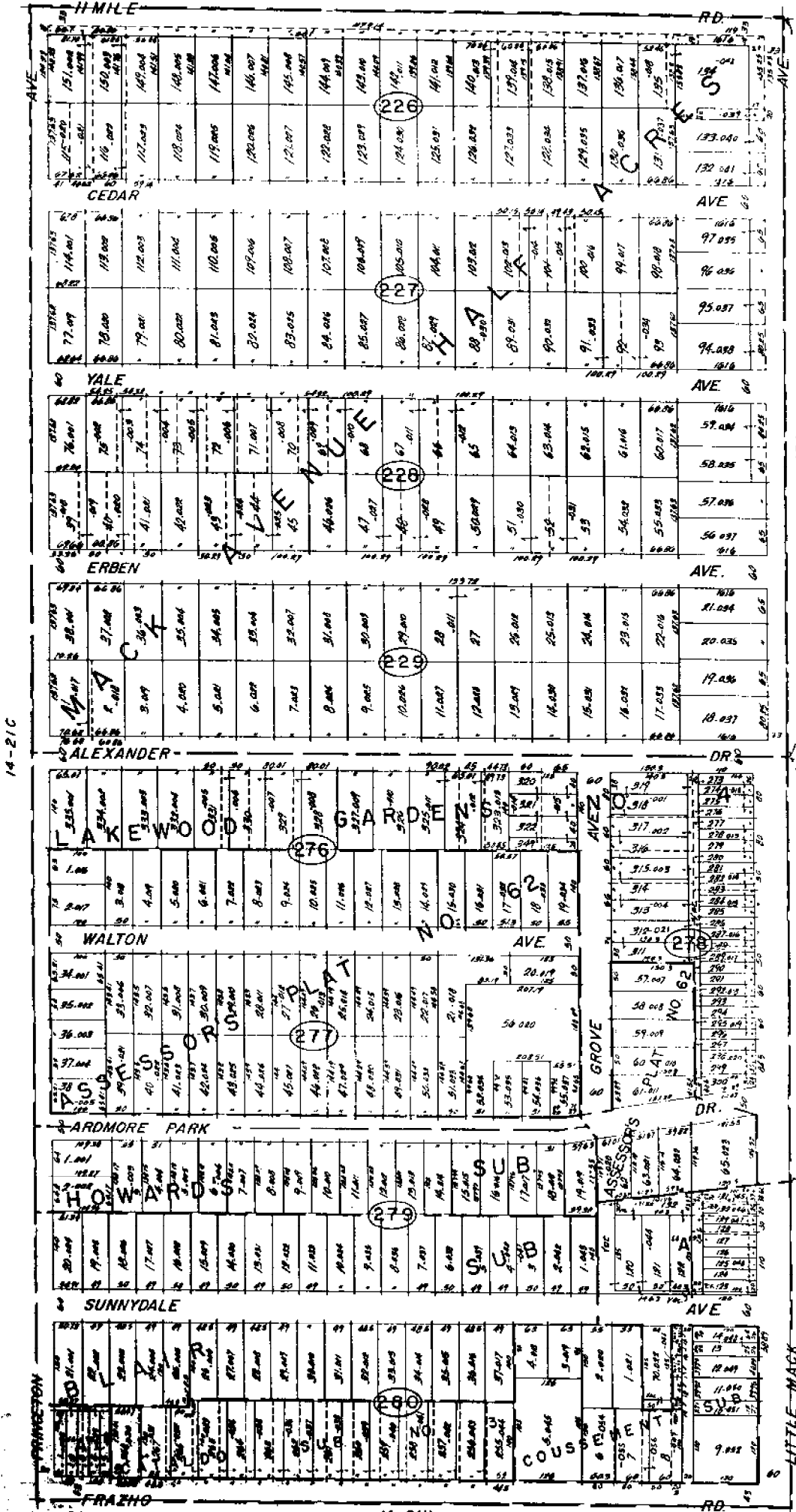
535 9

14-210

14-211

14-212

14-220



14-21C

1344.0

14-22A

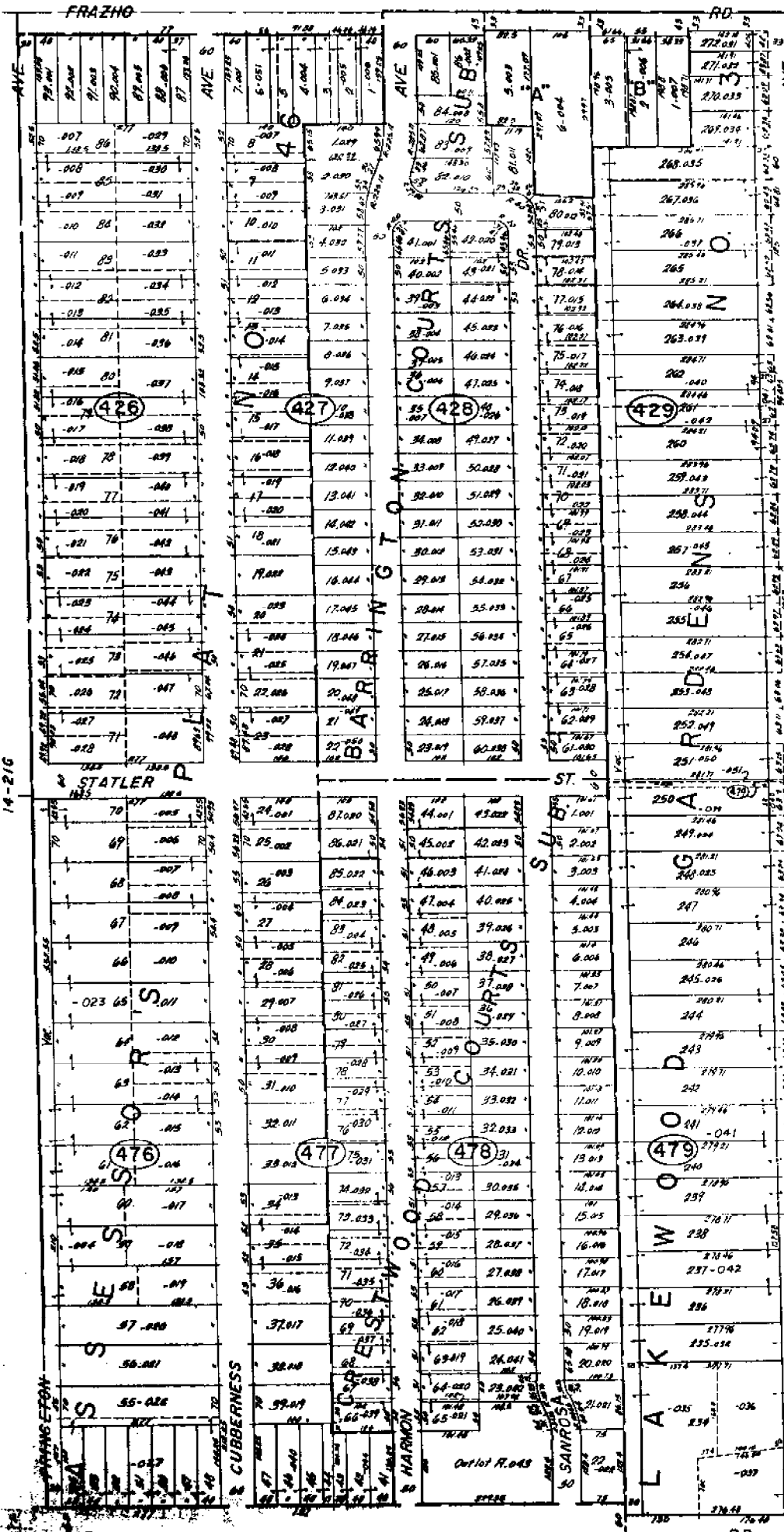
MACC-FRAZHO JOB

REV. 5-74

Copyright 1975 MACOMB COUNTY, MICHIGAN

14-21H
ST. CLAIR SHORES
 E. 1/2 NE. 1/4 SEC. 21 T.1N. R.13E.

SCALE: 1" = 185.8'
 14-21D



ASSESSOR'S PLAN
NO. 17
VIGNETTO 500

14-216

14-22E

18 MILE

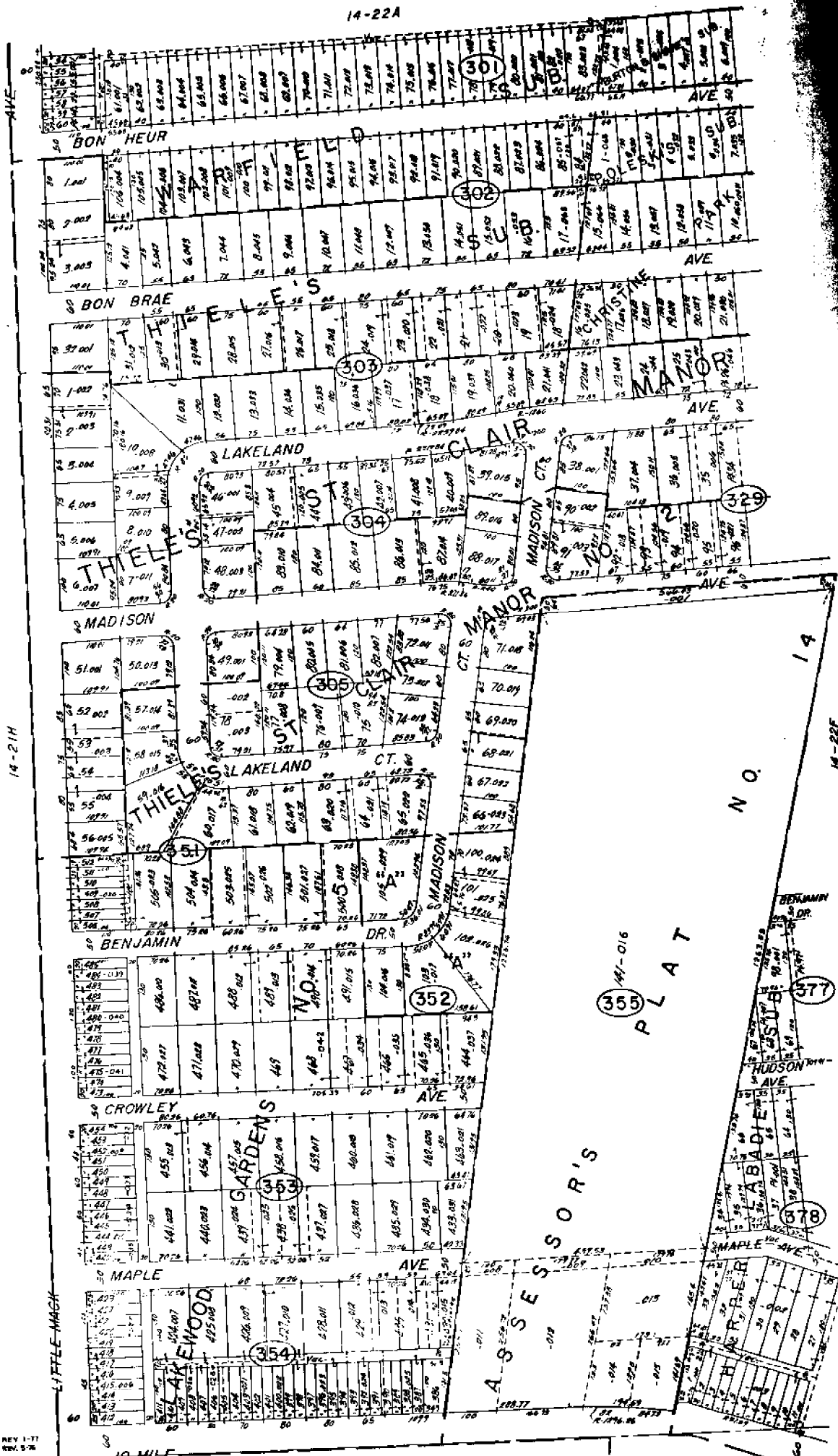
ST. CLAIR SHORES
E. 1/2 S.E. 1/4 SEC. 21 T. 13E.

Copyright 1973
MACOMB COUNTY, MICHIGAN

SCALE: 1" = 100'
1862
14-21H

14-22A

THIRLED BY CLARK MANOR NO. 3



ST. CLAIR SHORES
 W 1/2 SW 1/4 SEC. 22 T.1N. R.13E.

SCALE: 1" = 100'
 1867
 14-22E

Copyright 1973
 MACOMB COUNTY, MICHIGAN

14-27A

REV 1
REV 2
REV 3