

LAND CORNER RECORDATION CERTIFICATE
Filing Requirement of Act 74, Mich. P.A. 1970

For corners in

Macomb

(County)

Located In:

Corner Code #G4

Erin\Lake Township

- | | | | |
|------------------------------------|-------|--------------------------|-----------|
| 1. Public Land Survey | | T <u>1N</u> R <u>13E</u> | <u>G4</u> |
| | | T ___ R ___ | _____ |
| | | T ___ R ___ | _____ |
| | | T ___ R ___ | _____ |
| 2. Property Controlling in Section | S ___ | T ___ R ___ | _____ |
| | S ___ | T ___ R ___ | _____ |
| 3. Miscellaneous Property in Sec. | S ___ | T ___ R ___ | _____ |
| | S ___ | T ___ R ___ | _____ |

Register of Deeds Stamp & File Number

4. Lot No. _____, Recorded Plat _____
 5. Private Claims _____

I, Craig P. Amey, in a field survey on August 7, 1995 do hereby certify that under requirements of P.A. 74, Michigan P.A. of 1970, the corner points mentioned in lines 1 and 2 above were in conformance with regulations and rules therefore as required in the current manual of survey instructions of the United States Department of the Interior, Bureau of Land Management or by a decree of a Court of Law and /or that the corner points mentioned in lines 3, 4 and 5 above were in conformance with the rules of the Michigan Board of Land Surveyors or by a Decree of a Court of Law, established, re-established, monumented, re-monumented, recovered, found as expressed below:

NOTE: Not more than 4 corners, all in the same town and range, may be recorded on this certificate.

A	B	C	D	E	F	G	H	I	J	K	L	M
1												
2	6		5		4		3		2		1	
3												
4	7		8		9	●	10		11		12	
5												
6	18		17		16		15		14		13	
7												
8	19		20		21		22		23		24	
9												
10	30		29		28		27		26		25	
11												
12	31		32		33		34		35		36	
13												

A. Description of original monument and accessories and/or subsequent restoration:

1818 GLO		William Preston	No witnesses remain
1983 LCRC	L3551 P371	William E. Soderberg	Found rered in mon box in centerline of Little Mack

B. Description of corner evidence found and/or method applied in restoring or reestablishing corner:

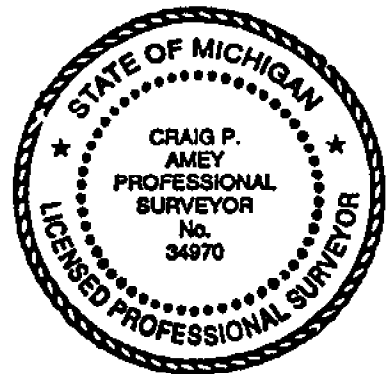
Found rered in a monument box in the centerline of Little Mack Road (Concrete)

This corner verified by:

Witnesses from LCRC, L3551 P371

N72E 35.00 NW corner of a catch basin
 N11W 118.72 PK in the E side of a utility pole

S 2683.22' Southeast corner of section 9 (G5) (GLO = 40ch)
 N 2696.39' Northeast corner of section 9 (G3) (GLO = 40ch)



C. Description of monument for corner and accessories established to perpetuate locating the position of the corner:

REPLACED REROD WITH 3/4" X 24" IRON WITH MCR CAP #34970 IN THE EXISTING MONUMENT BOX

140° 90.76 SW corner of a concrete porch at Clancy's Trucking
 270° 34.05 Set PK and MCR tag in the S face of a utility pole
 345° 118.85 Set PK and MCR tag in the E face of a utility pole
 72° 35.00 NW corner of a catch basin

The selected location is accepted by me and is generally accepted by professional surveyors as the best available evidence of the position of the original corner.

ACCEPTED BY THE MACOMB COUNTY SURVEY PEER GROUP AS THE OFFICIAL CORNER UNDER MICHIGAN PUBLIC ACT 345 OF 1990 AT A MEETING HELD ON 8-15-95
William E. Soderberg
 WILLIAM E. SODERBERG, P.S., CHAIRMAN

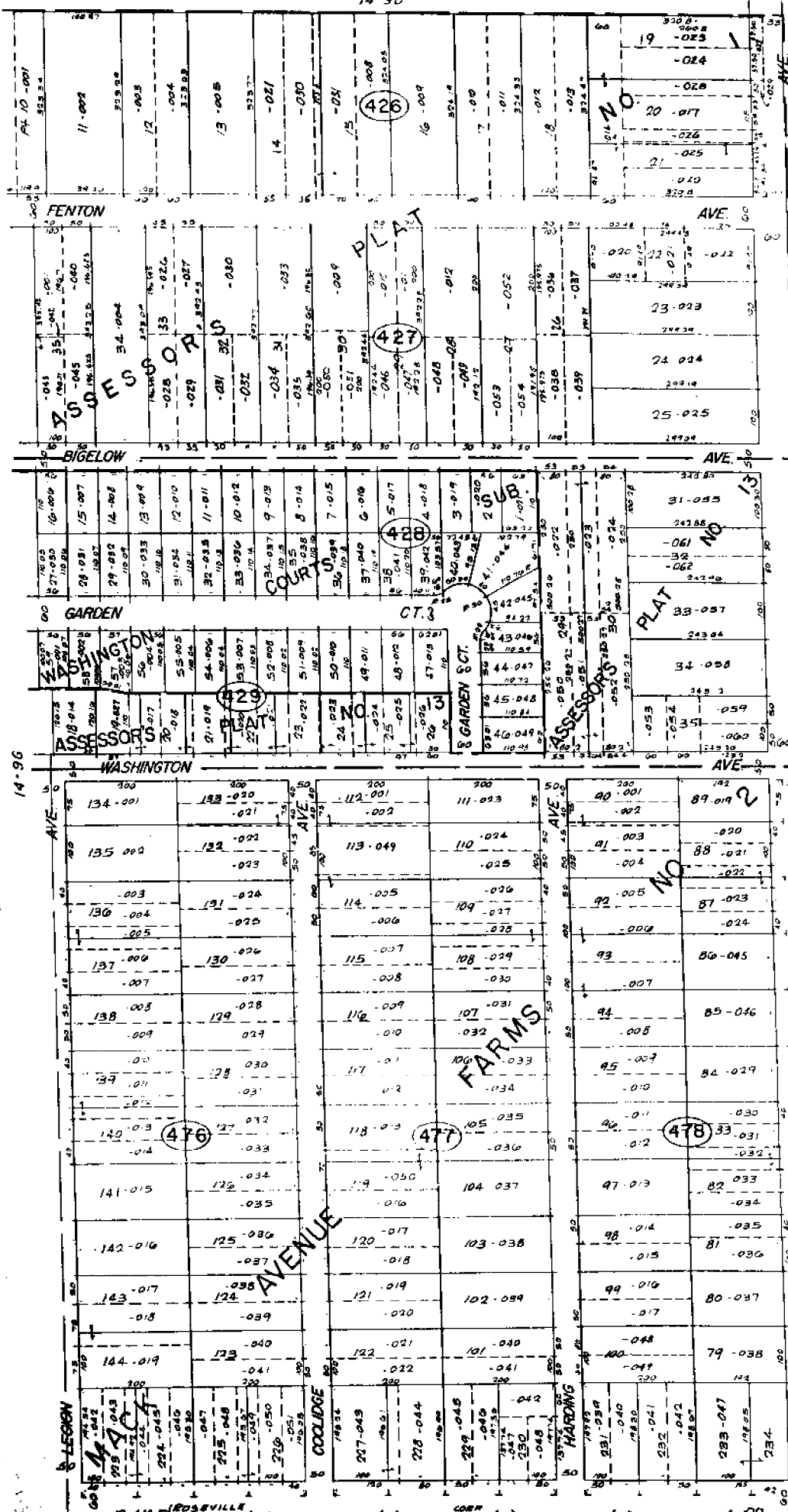
Signed by C. Amey Date 12-15-95
 Surveyor's Michigan License No. 34970

FORM APPROVED BY MICHIGAN STATE BOARD OF LAND SURVEYORS, JAN. 28, 1971

C0292271 LIBER:06862 PAGE:830 11:11A 12/21/1995
 CARMELLA SABAUGH-MACOMB COUNTY, MI REG/DEEDS

REVISED MAY 14, 1976
 REVISED JAN, 1983

14-9D



14-9C

14-10E

14-16D

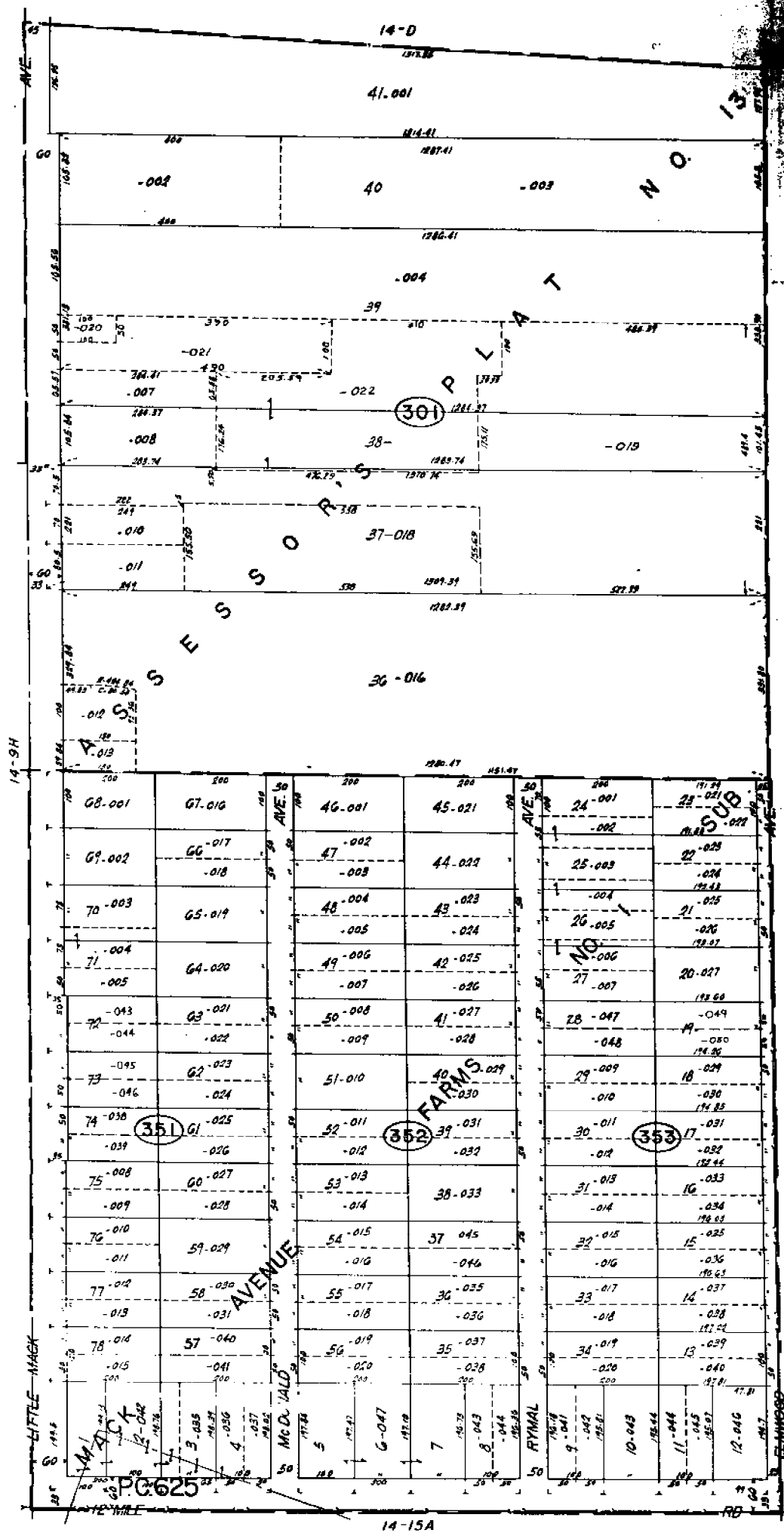
ROSEVILLE

E 1/2 SE 1/4 SEC. 9 T1N R13E.

SCALE 1" = 78.8'

14-9H

Copyright 1972
MACOMB COUNTY, MICHIGAN



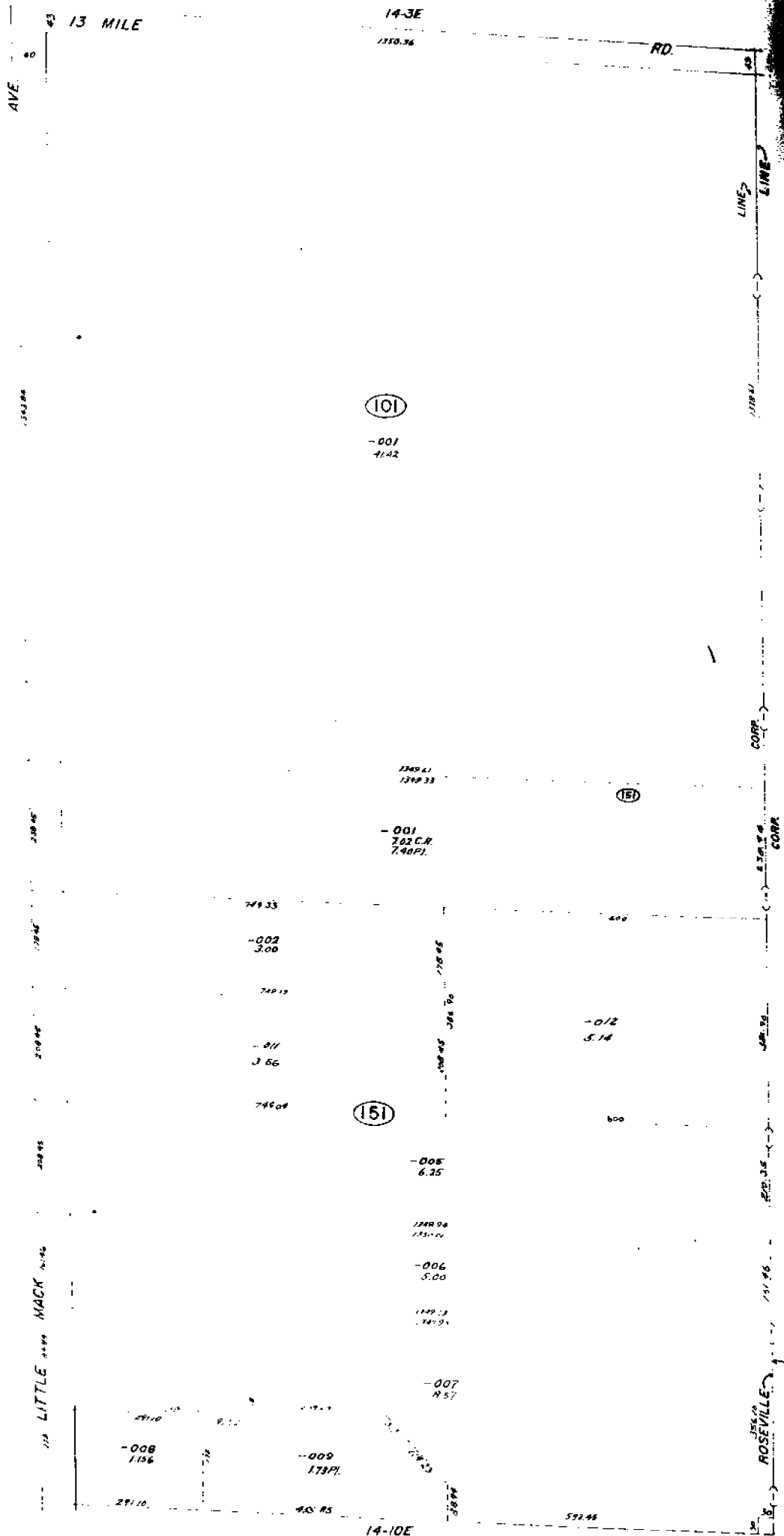
REV. 11-76
REV. 11-77
REV. 11-78

REV. 7-77
REV. 1-77

Copyright 1972
TACOMR COUNTY, MICHIGAN

SCALE 1" = 40'
1793
4-10E

14-15A
ROSEVILLE
W. 1/2 SW. 1/4 SEC. 10 & PT. P.C. 625 T.1N. R.13E.

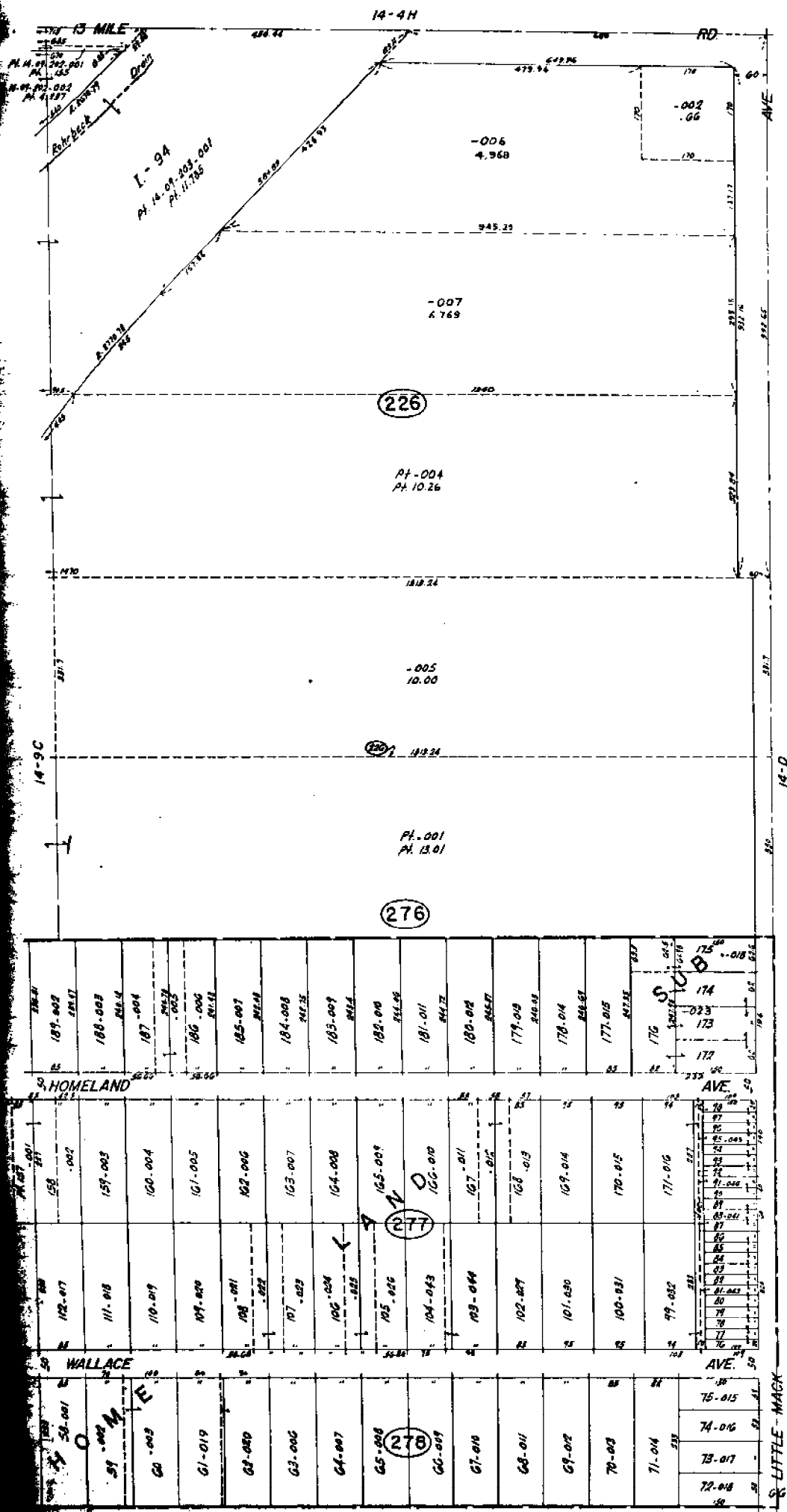


REV 11-78
RSD 5-79
RIS 4-79
DNG 11-77

1789
14-10A

ROSEVILLE
W.1/2 N.W.1/4 SEC. 10 T.13N. R.13E.

SCALE



ROSEVILLE
E 1/2 NE 1/4 SEC. 9 T. 14 N. R. 13 E.

COPY FROM 1972
MACOMB COUNTY, MICHIGAN

SCALE 1" = 100'
1784
14-9D

LAND CORNER RECORDATION CERTIFICATE
FILING REQUIREMENT OF ACT 74, MICH. P.A. 1970
ERIN TOWNSHIP

FOR CORNERS OF--	LOCATED IN--	CORNER CODE NUMBER
1. PUBLIC LAND SURVEY _____ T. <u>1</u> N. <u>X</u> , R. <u>13</u> E. <u>W.</u>		G-3, G-4
2. PROPERTY CONTROLLING IN SECTION _____, T. _____ N. _____, R. _____ E. _____ W. _____		
3. MISCELLANEOUS PROPERTY IN SECTION _____, T. _____ N. _____, R. _____ E. _____ W. _____		
4. LOT NO. _____, RECORDED PLAT _____		
5. PRIVATE CLAIMS _____		

A824543
 RECORDED IN MACOMB RECORDS AT: **9:15**,
OCT 13 1983
Edna
 CLERK - REGISTER OF DEEDS
 MACOMB COUNTY, MICHIGAN
 REGISTER OF DEEDS STAMP
 FILING NUMBER

I, William E. Soberberg, do hereby certify that under requirements of P.A. 74, Michigan P.A. of the corner points mentioned in lines 1 and 2 above were, in a field survey on January 3, 1980, established, re-established, monumented, re-monumented, recovered or restored as expressed below and in conformance with regulations and rules therefore as required in the current manual of survey instructions of the United States Department of the Interior Bureau of Land Management or by a decree of a court of law. Furthermore, that the corner points mentioned in lines 3 and 5 above were, in a field survey on _____, 19____, found, recovered, restored, established or re-established as expressed below and in conformance with the rules of the Michigan State Board of Registration for Land Surveyors or by Decree of a Court of law:

A. Description of original monument and accessories and/or subsequent restoration:

B. Description of corner evidence found and/or method applied in restoring or re-establishing corner:

- G-3 Fd. Boat Spike in Mon. Box at Intersection of Little Mack and 13 Mile Road
- G-4 Fd. Rerod in Mon. Box Located in Centerline of Little Mack

C. Description of monument for corner and accessories established to perpetuate locating the position of the corner:

- G-3 Fd. Boat Spike in Mon. Box
 N. 56' E. 81.21' to Pk. Set in S.E. Face of U.P.
 S. 44* E. 53.32' to Pk. Set in S.W. Face of U.P.
 S. 36* W. 61.33' to Nail w/Tag Fd. in N.E. Face of U.P.
 N. 37* W. 57.55' to Nail w/Tag Fd. in S.E. Face of U.P.
- G-4 Fd. Rerod in Mon. Box
 N. 72* E. 35.00' to N.W. Corner of Catch Basin
 S. 51* E. 67.32' to Pk. Fd. in S.W. Face of U.P.
 W. 34.00' to Nail w/Tag Fd. in N. Face of U.P.
 N. 11* W. 118.72' to Pk. Set in E. Face of U.P.

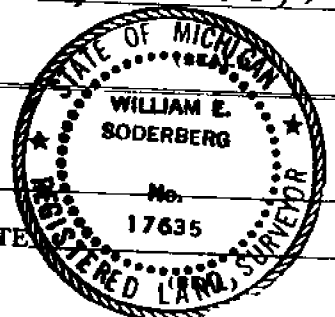
SIGNED BY William E. Soberberg DATE August 18, 1983

SURVEYOR'S MICHIGAN REGISTRATION NO. 17635

FOR STATE AND UNITED STATES AGENCIES:

SIGNED BY _____ DATE _____
CHIEF OF SURVEY PARTY

APPROVED AND SIGNED BY _____ DATE _____
MICHIGAN REGISTERED LAND SURVEYOR



SURVEYOR'S MICHIGAN REGISTRATION NO. _____

2