

LAND CORNER RECORDATION CERTIFICATE
Filing Requirement of Act 74, Mich. P.A. 1970

For corners in

Macomb
 (County)

Located In: Corner Code #
 City of Roseville and City of St. Clair Shores

5229373
LIBER 17446 PAGE 168



1. Public Land Survey T 1N R 13E F-8
 T ___ R
 T ___ R
 T ___ R
2. Property Controlling S ___ T ___ R
 in Section S ___ T ___ R
3. Miscellaneous S ___ T ___ R
 Property in Sec. S ___ T ___ R
4. Lot No. _____, Recorded Plat
5. Private Claims

12/20/2005 01:56:19 P.M.
 MACOMB COUNTY, MI SEAL
 CARMELLA SABAUGH, REGISTER OF DEEDS

Register of Deeds Stamp & File Number

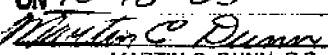
	A	B	C	D	E	F	G	H	I	J	K	L	M
2	6		5		4		3		2		1		
3													
4	7		8		9		10		11		12		
5													
6	18		17		16		15		14		13		
7													
8	19		20		21		22		23		24		
9													
10	30		29		28		27		26		25		
11													
12	31		32		33		34		35		36		
13													

I, Robert H. Birkett, in a field survey on, August 23, 2005 do hereby state that under requirements of P.A. 74, Michigan P.A. of 1970, the corner points mentioned in lines 1 and 2 above were in conformance with regulations and rules therefore as required in the current manual of survey instructions of the United States Department of the Interior, Bureau of Land Management or by a decree of a Court of Law and/or that the corner points mentioned in lines 3, 4 and 5 above were in conformance with the rules of the Michigan Board of Land Surveyors or by a Decree of a Court of Law; established, re-established, monumented, re-monumented, recovered, found as expressed below:

NOTE: Not more than 2 corners, all in the same town and range, may be recorded on this certificate.

A. Description of original monument and accessories and/or subsequent restoration:

- F-8 Center Post of Section 21.
- (a) 1920, W. J. Lehner No. 123, "Pattow Subdivision", L006 P014 M.C.R.
 - (b) 1921, G. Kennedy No. 210, "Suburban Homes Subdivision", L005 O038 M.C.R.
 - (c) 1923, W. S. Parker (CE), "Park Lawn Sub.", L006, P084 M.C.R.
 - (d) 1924, W. J. Lehner No. 123, "Lakewood Gardens No. 3", L008, P033 M.C.R.
 - (e) 1925, H. R. O'Mara (CE), "Kelly Park Subdivision", L008, P097 M.C.R.
 - (f) 1925, H. R. O'Mara (CE), "Henry Moldenhauers Aviation Park Subdivision", L009, P084 M.C.R.
 - (g) 1925, W. J. Lehner No. 123, H, L. Allen's Grand Highway Subdivision", L009, P091 M.C.R.
 - (h) 1925, W. J. Lehner No. 123, "Gratiot-Kelly Subdivision", L009, P098 M.C.R.
 - (i) 1925, W. J. Lehner No. 123, "Lawndale Park Subdivision No. 1", L010, P021 M.C.R.
 - (j) 1930, W. J. Lehner No. 123, "Assessors Plat No. 17", L014, P049 M.C.R.
 - (k) 1936, W. J. Lehner No. 123, "Assessors Plat No. 46", L019, P014 M.C.R.
 - (l) 1947, W. J. Lehner No. 123, "Ingleside Farms Sub. No. 3", L024, P024 M.C.R.
 - (m) 1950, C. Postiff No. xx, "Harbo Grand Subdivision", L025, P024 M.C.R.
 - (n) 1950, P. J. O'Non No. 6213, "Barnara Barnes Subdn" L028, P048 M.C.R.
 - (o) 1953, W. J. Lehner No. 123, "Alexander Heights Sub.", L028, P. 011 M.C.R.
 - (p) 1951, L. T. Brown No. 2967, "Caroline Subdivision", L026, P006, M.C.R.
 - (q) 1951, L. T. Brown No. 2967, "Stella Gardens Subdivision", L026, P007 M.C.R.
 - (r) 1951, L. T. Brown No. 2967, "Lester Gardens Subdivision", L026, P014 M.C.R.
 - (s) 1952, L. T. Brown No. 2967, "Ruth Subdivision", L026, P048 M.C.R.
 - (t) 1952, L. T. Brown No. 2967, "Lawn Subdivision", L026, P049 M.C.R.
 - (u) 1952, C. Postiff No. xx, "Donald N. Sweeny's Sub'n.", L027, P001 M.C.R.
 - (v) 1952, J. J. McMahon, "Andy's Gardens Subdivision", L027, P005 M.C.R.
 - (w) 1953, L. Cantor No. 10682, "Mary K. Berndt Subdivision", L027, P047 M.C.R.
 - (x) 1954, P. J. O'Non No. 6213, "Patrica T. Barnes Subdn" L025, P034 M.C.R.
 - (y) 1953, C. Postiff No. 8894, Cataldo Subdivision No. 5", L028, P047 M.C.R.
 - (z) 1955, F. J. Bridges No. 5779, "Barrington Courts Subdivision", L032, P016 M.C.R.
 - (aa) 1955, W. J. Lehner No. 123, "Alexander Heights Sub. No. 1, L032, P040 M.C.R.

ACCEPTED BY MACOMB COUNTY SURVEY PEER GROUP FOR PROFESSIONAL CORNER UNDER MICHIGAN PUBLIC ACT 74 OF 1970 AT A MEETING HELD ON 10-18-05

 MARTIN C. DUNN, P.S. CHAIRMAN



B. Description of corner evidence found and/or method applied in restoring or reestablishing corner:

- F-8 Corner reestablished at centerline of Frazho Road over Interstate I-94 using the found irons and monumentation from (p), (u), (x), (y) and (aa) in section A.

Field Measurements Between Corners

- F-8 to F-7 - 2693.51' measured, Record distance east - 2698.30', Record distance west - 2697.25'
- F-8 to G-8 - 2722.17' measured, Record distance north - 2724.01', Record distance south - 2721.04'
- F-8 to F-9 - 2699.26' measured, Record distance east - 2698.84', Record distance west - 2699.26'
- F-8 to E-8 - 2723.18' measured, Record distance north - 2723.02', Record distance south - 2724.00'

C. Description of monument for corner and accessories established to perpetuate locating the position of the corner:

- F-8 Set a brass plug on an existing bridge deck on the centerline of Frazho Road over Interstate I-94, marked "Macomb County Monument, MI, ACT 345, 41094, F-8".

- Az. 0° - 13.80' - South face of walk.
- Az. 90° - 153.20' - Edge of concrete at end of bridge deck.
- Az. 180° - 14.41' - North face of walk.
- Az. 255° - 171.75' - Set Macomb County Remonumentation tag in northwest face utility pole.
- Az. 295° - 67.80' - Set chiseled "x" on south rim MDOT man hole.

The Selected location is accepted by me and is generally accepted by Professional Surveyors as the best available evidence of the position of the original corner.

Signed by Robert H. Birkett
 Surveyor's Michigan License No. 41094

Date November 18, 2005

**Report of Survey
F-8, Erin Township
Town 1 North, Range 13 East
Macomb County, Michigan**

Corner Information

Center Post Section 21. Re-set corner using the information from "Patrica T. Barnes Sub", Caroline Subdivision; Comfort Subdivision", Cataldo Subdivision", Donald N. Sweeny's Sub'n.", Alexander Heights Subdivision" and Cataldo Subdivision.

Tax Descriptions

None

Plats

1920, W. J. Lehner No. 123, "Pattow Subdivision", L006 P014 M.C.R.
1921, G. Kennedy No. 210, "Suburban Homes Subdivision", L005 O038 M.C.R.
1923, W. S. Parker (CE), "Park Lawn Sub.", L006, P084 M.C.R.
1924, W. J. Lehner No. 123, "Lakewood Gardens No. 3", L008, P033 M.C.R.
1925, H. R. O'Mara (CE), "Kelly Park Subdivision", L008, P097 M.C.R.
1925, H. R. O'Mara (CE), "Henry Moldenhauers Aviation Park Subdivision", L009, P084 M.C.R.
1925, W. J. Lehner No. 123, H. L. Allen's Grand Highway Subdivision", L009, P091 M.C.R.
1925, W. J. Lehner No. 123, "Gratiot-Kelly Subdivision", L009, P098 M.C.R.
1925, W. J. Lehner No. 123, "Lawndale Park Subdivision No. 1", L010, P021 M.C.R.
1930, W. J. Lehner No. 123, "Assessors Plat No. 17", L014, P049 M.C.R.
1936, W. J. Lehner No. 123, "Assessors Plat No. 46", L019, P014 M.C.R.
1947, W. J. Lehner No. 123, "Ingleside Farms Sub. No. 3", L024, P024 M.C.R.
1950, C. Postiff No. xx, "Harbo Grand Subdivision", L025, P024 M.C.R.
1953, W. J. Lehner No. 123, "Alexander Heights Sub.", L028, P. 011 M.C.R.
1950, P. J. O'Non No. 6213, "Barnara Barnes Subdn" L028, P048 M.C.R.
1951, L. T. Brown No. 2967, "Caroline Subdivision", L026, P006, M.C.R.
1951, L. T. Brown No. 2967, "Stella Gardens Subdivision", L026, P007 M.C.R.
1951, L. T. Brown No. 2967, "Lester Gardens Subdivision", L026, P014 M.C.R.
1952, L. T. Brown No. 2967, "Ruth Subdivision", L026, P048 M.C.R.
1952, L. T. Brown No. 2967, "Lawn Subdivision", L026, P049 M.C.R.
1952, C. Postiff No. xx, "Donald N. Sweeny's Sub'n.", L027, P001 M.C.R.
1952, J. J. McMahon, "Andy's Gardens Subdivision", L027, P005 M.C.R.
1953, L. Cantor No. XX, "Mary K. Berndt Subdivision", L027, P047 M.C.R.
1954, P. J. O'Non No. 6213, "Patrica T. Barnes Subdn" L025, P034 M.C.R.
1953, C. Postiff No. xx, Cataldo Subdivision No. 5", L028, P047 M.C.R.
1955, F. J. Bridges No. 5779, "Barrington Courts Subdivision", L032, P016 M.C.R.
1955, W. J. Lehner No. 123, "Alexander Heights Sub. No. 1, L032, P040 M.C.R.

Recorded Surveys

None

Miscellaneous

1958, RCMC Witness Card
N 46° W - 56.60' - Guy pole.
S 42° E - 49.25' - Telephone pole.
S 64° W - 72.59' - Power pole.

1994, AEW, Inc., Found ½" pipe in concrete bridge deck over I-94, Field notes.
0° 13.25' - South edge concrete walk for bridge.
180° 14.77' - North edge concrete walk for bridge.
270° 55.40' - West end bridge deck.
280° 57.15' - Northwest corner concrete guard rail of bridge.

Observations From F-8

Field Measurement to F-7 - 2693.51'
Record distance east side section line - 2698.30'
Record distance west side section line - 2697.25'


Field Measurement to G-8 - 2722.17'
Record distance north side section line - 2727.01'
Record distance south side section line - 2721.04'

Field Measurement to F-9 - 2699.26'
Record distance east side section line - 2698.84'
Record distance west side section line - 2699.26'

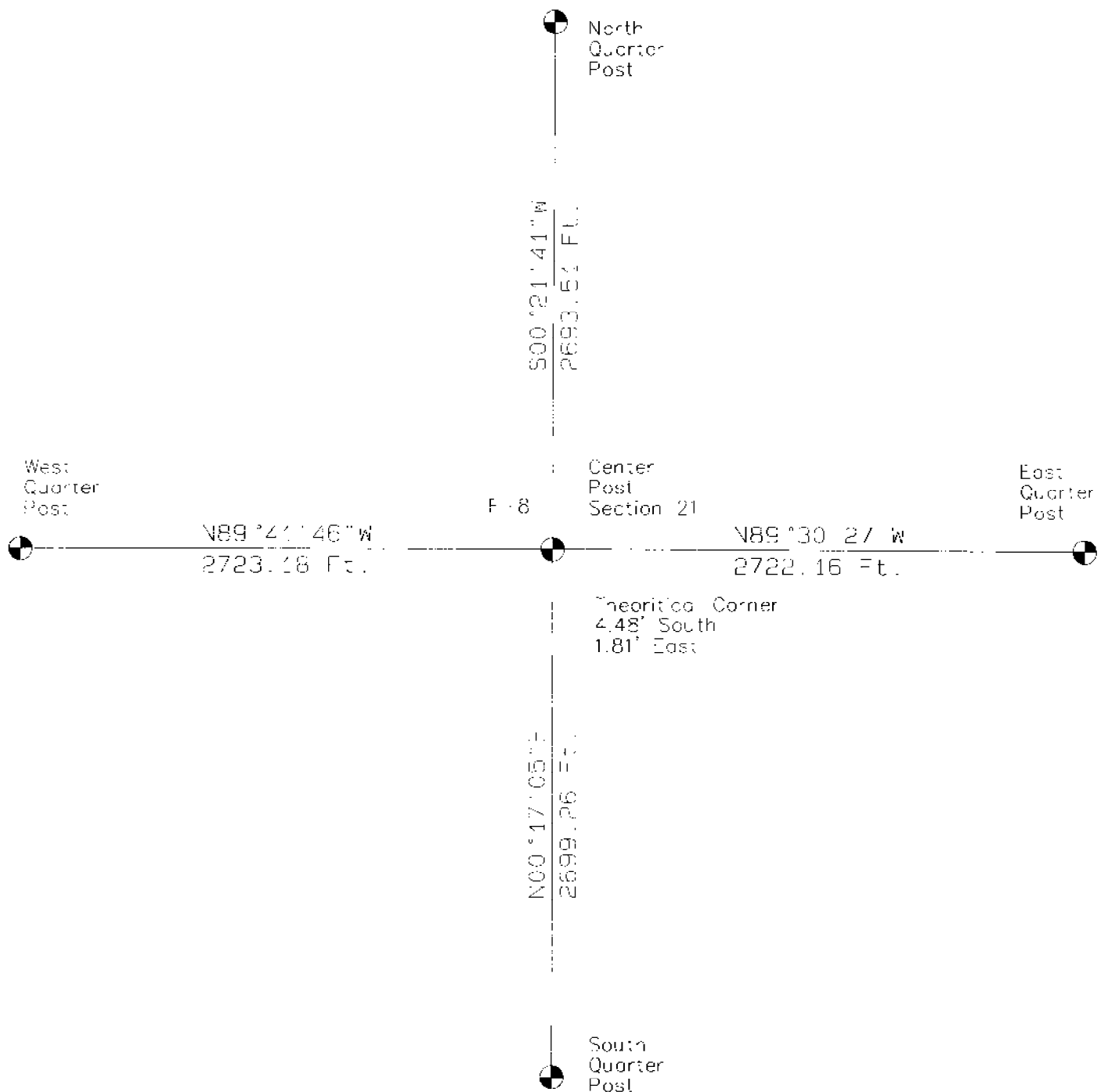
Field Measurement to E-8 - 2723.18'
Record distance north side section line - 2723.02'
Record distance south side section line - 2724.00'

Recommendation

The recommendation to the Peer Review Board is to accept the above position as the faithful perpetuation of the corner.


Robert H. Birkett, P.S.
Michigan No. 41094

Town 1 North
Range 13 East
City of Eastpointe and St. Clair Shores



1-75A

E-29

KELLY
PROCESSED
PLACE CONDO
L. 23 P. 17

SPUR 1400
L. 23 P. 17

1050.03

HELEN
L. 23 P. 17
K. 11 B

ANDY'S GARDENS
SUBDIVISION
L. 27 P. 5

AREA 2 HD

COMFORT
SUBDIVISION
L. 28 P. 17

647.40

LOWEN SUBDIVISION
L. 26 P. 49

320.45

RE-ENTRY
L. 23 P. 17

RUTH SUBDIVISION
L. 26 P. 48

292.50

CAROLINE SUBDIVISION
L. 27 P. 16

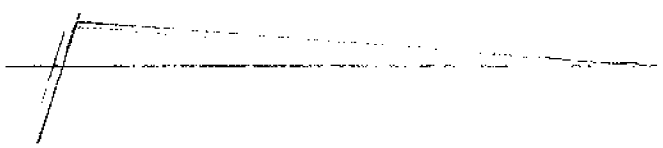
646.57

KAREN
MAY
L. 23 P. 17

STELLA GARDENS
L. 23 P. 17

103.00

E-29



SEARCHED

F-8

SEARCHED
SERIALIZED
INDEXED
L. 26 P. 7

1374.26

I-77

SEARCHED
SERIALIZED
INDEXED
L. 26 P. 7

SEARCHED
SERIALIZED
INDEXED
L. 26 P. 7

1925.00

F-9

275

LANING PARK
L. 10 P. 21

4-8

341.10'

327.74

Don't know the number

CATALDO SUB
L. 25 P. 21

405.70

590.00

672.71

Don't know the number
L. 25 P. 21

CATALDO SUB No. 5
L. 28 P. 47

338.14

FRANZ

255.66

50.51 AREA

ALEXANDER
L. 24 P. 21

130.00 AREA

A.P. No. 46
L. 19 P. 11

647.00

1447.0

BARRETT POINTS
L. 32 P. 16

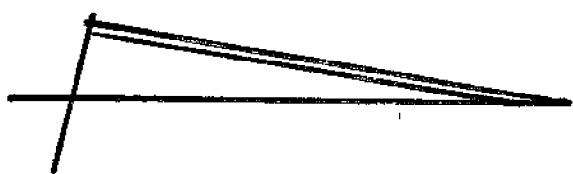
180.32

LITTLE ROCK

~~350.00~~
521.04

61.0

6.100



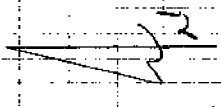
275

223-026 2005 MACOMB REMON
 8-23-05 F-8
 MUDGER T. 11N, R. 13E GRAN - EAST POINTE

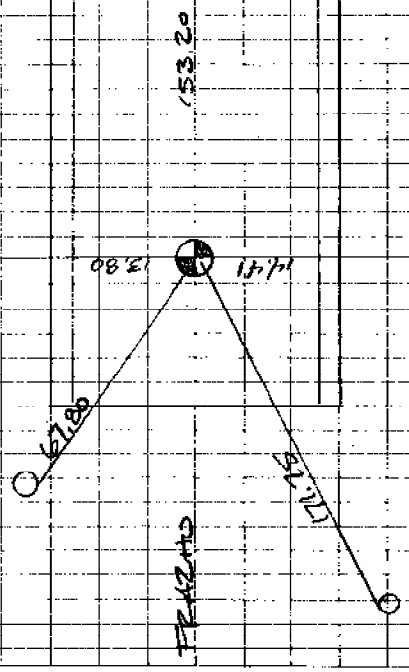
No 2449

SET PK IN CONC DECK

AZ.	DIST	DESC
0°	13.80	S. FACE OF CURB-FACE WALK
180°	14.41	N. FACE OF CURB-FACE WALK
255°	171.75	SET REMON IN NW FACE U.P.
295°	67.80	SET CHIS X ON S. RIM OF MIDT SCANDI MH
90°	153.20	E/ CONC C. E. END BRIDGE DECK



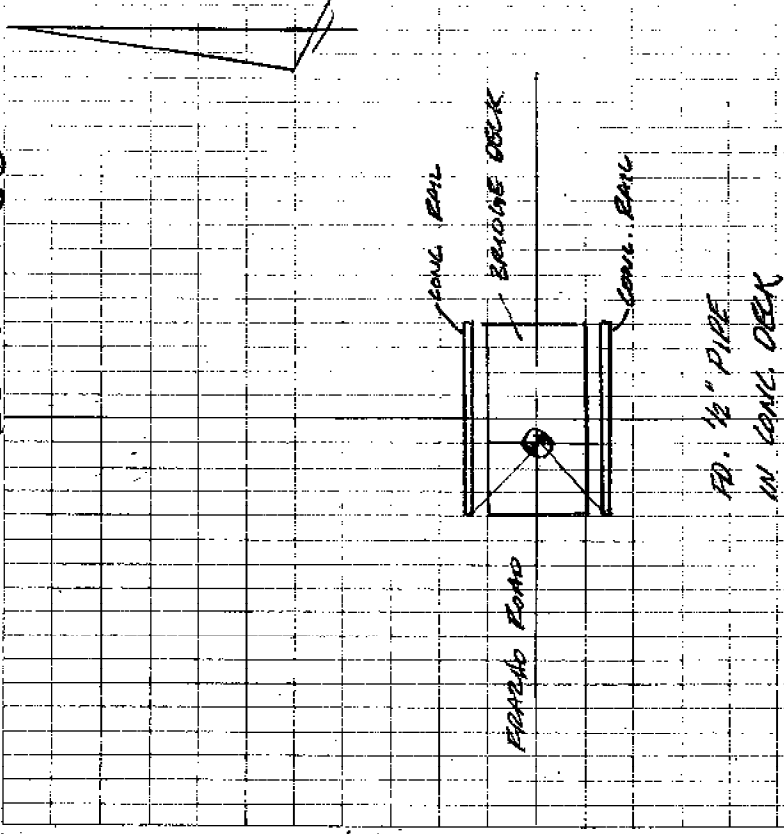
76-11



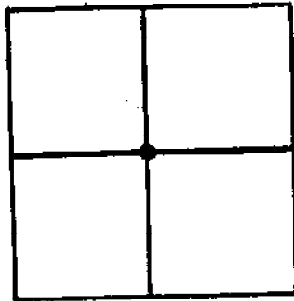
2-21-94
ENR, WLS, DEL

ANGLE	TIME	LOCATION / DESCRIPTION
		CENTER COR. SEC. 21
		T.I.N., RISE
		COPY OF DRAWING, MALCOMB CO.
		FOUND 1/2" PIPE IN CONC.
		BRIDGE DECK OVER I-94
1) 250°	61.25	S.W. COR. CONC. GUARD RAIL, BRIDGE OVER I-94
2) 290°	57.15	N.W. COR. CONC. GUARD RAIL, BRIDGE OVER I-94
3) 270°	55.40	TO WEST END BRIDGE DECK OVER I-94
4) 0°	13.25	TO EDGE CONC. WALK BRIDGE OVER I-94
5) 180°	14.77	TO N. EDGE CONC. WALK BRIDGE OVER I-94

Book # 1138
F-880



RD. 1/2" PIPE
IN CONC. DECK



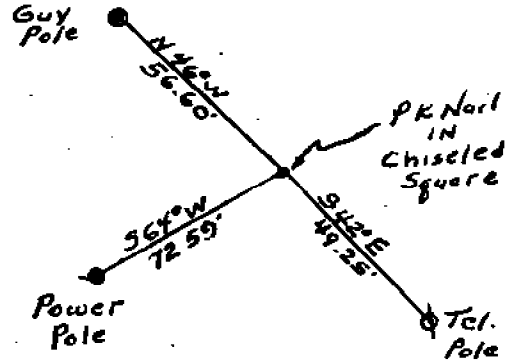
REMARKS

Center of Section 21
 P.K. Nail in chiseled square in ϕ of
 Frazho Road (10 1/2 Mile Road)
 (Set from subdivision corners)

F-8

WITNESSES

Guy Pole	N46°W	56.60'
Tel. Pole	S42°E	49.25'
Power Pole	S64°W	72.59'



Road File No.	
File Point No.	Date Filed December 30 19
Assessment District No.	Station No.
City of St. Clair Shores	Section Corner Center Post Sec. 21
Type of Surface	Width
Description of Monument P.K. Nail in Chiseled square in center of Frazho Road (10-1/2 Mile Road)	
Monument in Relation to Center Line of Pavement	
WITNESSES:	
1.	Guy Pole N. 46° W. 56.60'
2.	Telephone Pole S. 42° E. 49.25'
3.	Power Pole S. 64° W. 72.59'
4.	

F-8

ROSSVILLE

ST. CHARLES

11 MILE SERVICE DRIVE

F-7

2001 RECORD

11 MILE

218

212

H.L. ALLEN'S
GERMAN HIGHWAY
SUB
L. 9 P. 91

ARNO GRANN
SUBDIVISION
L. 25 P. 1

RECORD 2697.25

MAEY K BERNDT
SUBDIVISION
L. 27 P. 4

BARBARA
BARNES
SUBDIVISION
L. 25 P. 8

KATHY MASCHMEYER
SUBDIVISION
L. 26 P. 30

ASSOCIATED
PLAT

347.12'

1348.75 (21)

499.18'

I-74

I-74

675.00

1349.55

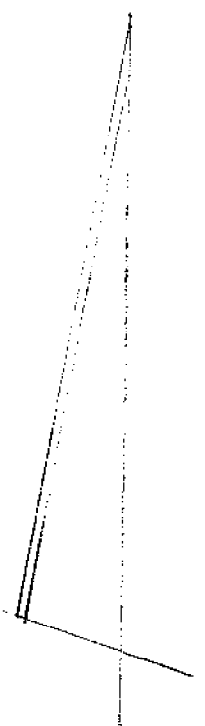
675.95

FRANZ HO ROAD

F-8

CENTRAL 351.21

2005 RECORD



210

LEWIS & CLARK
L. 10 P. 01

F-9

F-7

341.10
327.74

DONALD H. SWEENEY
SUI. 1250
L. 27 P. 1

CATHEDRAL SUB
L. 25 P. 21

105.10
590.00
672.71

DONALD H. SWEENEY
SUI. 12
L. 27 P. 1

CATHEDRAL SUB
L. 28 P. 47

338.14

56.51 A.P. No. 57 L. 22 P. 3
ALEXANDER BEIBER SUI.
L. 23 P. 1

130.00 ALEXANDER BEIBER
SUI. 13 L. 32 P. 40

A.P. No. 46
L. 22 P. 4

647.00
1477.00

BLANKET POINTS
L. 22 P. 15

192.32

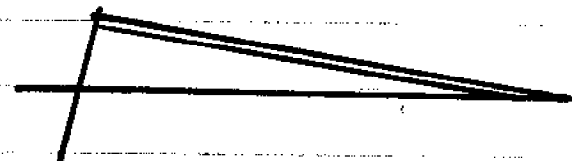
537.88

668.49

LEWIS & CLARK

600

210



1.775A

KELLY PROFESSIONAL
MCCP CONDO
L. 29 P 17

SPACE PLOT
L. 29 P 19

E-8

1656.08

HEIDI
L. 28 P 17
L. 28 P 18
L. 28 P 19

ANDY'S GARDENS
SUBDIVISION
L. 27 P 5

COMFORT
SUBDIVISION
L. 28 P 17

ERA 2 HD

647.43

LOWEN SUBDIVISION
L. 26 P 49

320.45

REBECCA
L. 26 P 17
L. 26 P 18

RUTH SUBDIVISION
L. 26 P 48

292.30

CAROLINE SUBDIVISION
L. 26 P 6

646.57

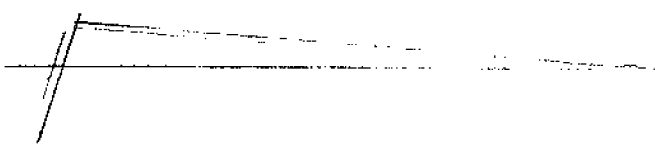
KIM
MAGGIE
L. 26 P 17
L. 26 P 18

STELLA GARDENS
L. 26 P 7

163.00

1.775

1.775



F-8 Zone

213

STATION
L. 23 F. 7

137426

I-94

STATION
L. 010 F. 7

STATION
L. 23 F. 7

1925.00

F-9

10 MILES ROAD

F-08

1925

H.R. O'MARA (C.E.)

17-1-1925
Henry L. Moldehauers

HENRY
MOLDEHAUERS
AVIATION PARK SUBDIVISION
OF PARTS OF
N.E. 1/4 OF Sec. 20 AND THE N.W. 1/4 OF Sec. 21 T.1N, R.1E.
ERIN TWP. MACOMB CO. MICH.

SCALE 1 in = 200 ft

6919

L. 9
P. 84

See Resolution and Variation of Road - (Kelly Road) L. 1060

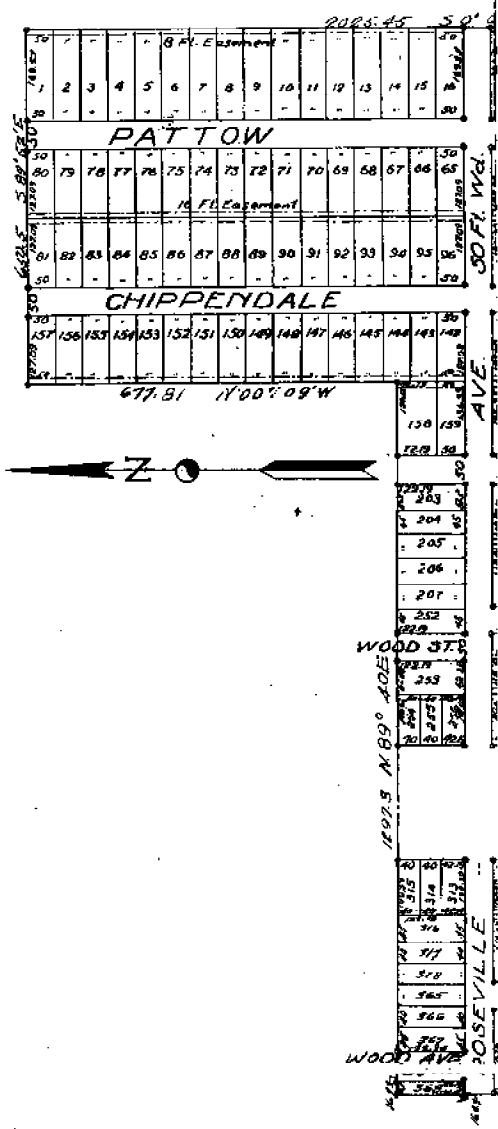
DESCRIPTION

The land embraced in the annexed plat of HENRY MOLDEHAUERS AVIATION PARK SUBDIVISION of parts of N.W. 1/4 of Sec. 20 and the N.W. 1/4 of Sec. 21 T.1N., R. 1E. Erin Twp., Macomb Co., Mich., is described as follows:

Beginning at the N.E. corner of Sec. 21, T.1N., R. 1E Erin Twp., Macomb Co., Mich. Thence S. 89° 10' W. a distance of 518.4 ft. Thence N. 00° 07' W. a distance of 1349.9 ft. Thence S. 89° 40' E. a distance of 1297.2 ft. Thence N. 00° 09' W. a distance of 577.81 ft. Thence S. 89° 51' E. a distance of 650.5 ft. Thence S. 89° 09' E. a distance of 2025.46 ft. Thence S. 89° 59' W. a distance of 1427.05 ft. to the point of beginning.

CONVEYED BY THE STATE OF MICHIGAN TO THE COUNTY OF MACOMB, MICHIGAN, PRIOR TO THE DATE OF RECORDING OF THIS INSTRUMENT.

Henry L. Moldehauers
J. O. Lullitt



See Resolution to Vary Kelly Road from L. 1333 Page

Plan 1060-17

84

NOTARY PUBLIC
 State of Michigan
 My Comm. Expires 12-31-1925

J. P. Elliott
 Notary Public
 County of Macomb

This plat was approved by the Township Board at a meeting held on the 16th day of July, 1925.

ENGINEER'S CERTIFICATE

I hereby certify that the plat hereon delineated is a correct one and that permanent monuments consisting of 3/4" iron gas pipe 18" long have been planted at all points marked (c) as thereon shown at all angles in the boundaries of the lots platted at all intersections of streets of streets and alleys.

W. R. O'Connell
 REGISTERED CIVIL ENGINEER

COMMISSIONERS OF TOWNSHIP BOARD

This plat was approved by the Township Board at a meeting held on the 16th day of July, 1925.

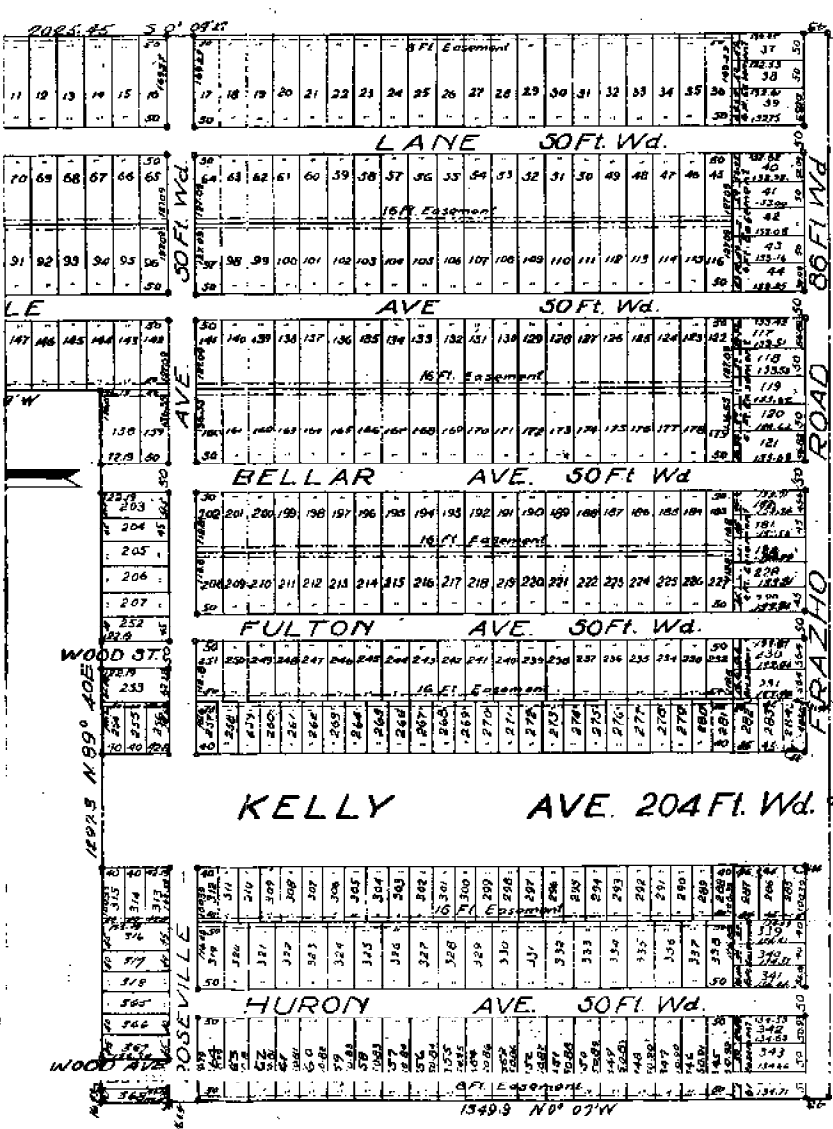
Robert K. Korman
 Township Clerk

The following clause to be incorporated in the plat:
 "That the above plat and subdivision is hereby subjected to the following agreement and covenant which shall be observed by these proprietors herein described and their successors and assigns and their heirs, executors, and administrators and assigns of them to-wit: That at no time shall any lot in said subdivision or part thereof or any building thereon be sold, rent, leased, transferred, or conveyed to, nor shall the same be occupied by, excepting as a domestic servant, any Negro or colored person or persons of Negro blood."

NOTARY PUBLIC
 County of Macomb

Received for Record this 22nd day of July, 1925, at 10:11 a.m. in Book 531 and Page 84 of Plat 1060-17.

Charles M. Mather
 Register



15493 N 07 W

Henry Madenbacher

BEFORE ALL MEN BY THESE PRESENTS: that we, the undersigned, as proprietors, have caused the land embraced in the annexed plat to be surveyed, laid out and platted to be known as Henry Madenbacher's 'VALETON PARK SUBDIVISION' of part of the NE 1/4 of Sec. 20 and the NW 1/4 of Sec. 21, T 1 N R 13 E 2nd Twp., Macomb Co., Mich. and that the streets and alleys as shown on said plat are hereby dedicated to the use of the public.

Signed and Sealed in the Presence of *Henry Madenbacher*

Henry Madenbacher

STATE OF MICHIGAN
 COUNTY OF MACOMB

On this 25th day of March, A.D. 1925, before me, a NOTARY PUBLIC in and for said county, personally came the above named *Henry Madenbacher*, known to me to be the person who executed the above dedication and acknowledged the same to be their free act and deed.

Henry Madenbacher
 Notary Public

My Commission Expires July 4, 1927

Plan 1339 Page 207 Auto

F-08

1925 W. J. LEHNER No. 123

GRATIOT-KELLY SUBDIVISION

PART OF THE N. 1/2 OF THE S. W. 1/4 OF SECTION 9 T. 1. N. R. 13. E. ERIN TWP. MACOMB CO. MICHIGAN

SCALE
1" = 100'

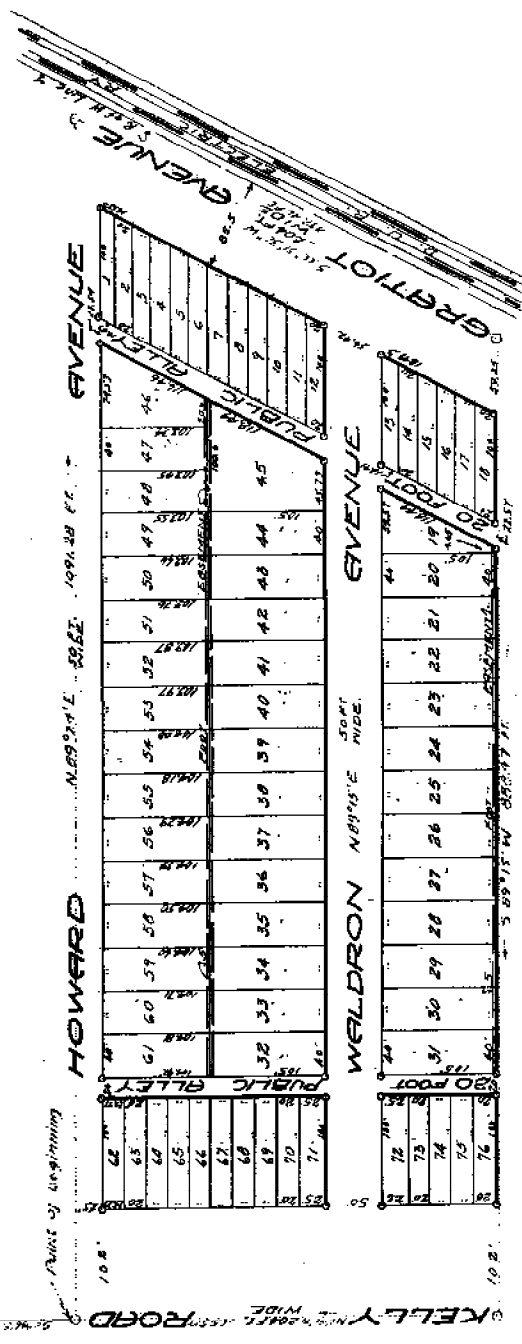
W. J. LEHNER REG. C.E.
MOUNT CLEMENS, MICH.

Point of Beginning

7045

Aug 80-1925
W. J. Lehner

See Vacations of Easements later rec'd of Lts. 19 thru 31 / Dec 31 1060 1/2
See Vacation of Easement Labeled 1101 of Deed Page 65
" " of Alley portion of Kelly has Labeled 1101 of Deed



FOR ALL AND BY THESE PRESENTS, that Lawrence H. Werner and Carrie E. Werner, his wife, as owners of legal title, and William Szymanski and Stella Szymanski, his wife, as owners under Land Contract have caused the land embraced in the annexed plat to be surveyed, laid out and platted, to be known as "GRATIOT-KELLY SUBDIVISION", part of the N. 1/2 of the S. W. 1/4 of Sec. 9 T. 1. N. R. 13. E., Erin Township, Macomb County, Michigan, and that the streets and alleys as shown on said plat are hereby dedicated to the use of the public. Witness my hand and seal this 1st day of August, 1925.

Description of Land Platted
The land embraced in the annexed plat of "GRATIOT-KELLY SUBDIVISION", part of the N. 1/2 of the S. W. 1/4 of Sec. 9, T. 1. N. R. 13. E., Erin Township, Macomb County, Michigan, is described as follows:
Beginning at a point 329.6 ft. S. 0°46' E. of the W. 1/4 post of Sec. 9, thence N. 89°24' E. 1091.28 ft. to S. 269.5130", W. 437.46 ft., thence S. 89°15' W. 858.47 ft., thence W. 0°46' E. 365.5 ft. to the point of beginning.

L. 9
P. 98

FOR ALL, EACH BY THESE PARTIES
 That Lawrence H. Werner and Carrie E. Werner, his wife, as
 owners of legal title, and William Szymanski and Stella Szyn-
 andski, his wife, as owners under Land Conveyance caused the
 and embraced in the annexed plat to be surveyed, laid out and
 platted, to be known as "GRATIOT-KELLY SUBDIVISION", part of the
 1/2 of the S.W. 1/4 of Sec. 9, T.1.N.R.13, E. Erie Township,
 Macomb County, Michigan, and that the streets and alleys as shown
 in said plat are hereby dedicated to the use of the public.
 Signed and sealed in
 my presence on
 this 9th day of January, 1925, at
 the City of Detroit, Michigan.
 Lawrence H. Werner
 Carrie E. Werner
 William Szymanski
 Stella Szynandski
 Notary Public, L. S.
 L. S.
 L. S.
 L. S.

Notary Public, L. S.
 My Commission Expires... 1927
 Notary Public, L. S.
 My Commission Expires... 1927

Notary Public, L. S.
 My Commission Expires... 1927

Notary Public, L. S.
 My Commission Expires... 1927

Liberal 1060... page 3/2
 page 65
 Lib 1101... page 68

Description of Land Platted
 The Land embraced in the annexed plat of "GRATIOT-KELLY SUBDIVISION",
 part of the S.W. 1/4 of Sec. 9, T.1.N.R.13, E. Erie
 Township, Macomb County, Michigan, is described as follows:
 Beginning at a point 329.6 ft. S. 0°46' W. of the N. 1/4
 post of Sec. 9, thence N. 89°24' E. 1091.28 ft., thence S. 28°51'30" W.
 457.46 ft., thence S. 89°15' E. 858.47 ft., thence N. 0°46' W.
 355.5 ft. to the point of beginning.

This is to certify that the above plat was approved by the
 Township Board of the Township of Erie, Macomb County, Michigan, at
 a meeting held this 2nd day of January, 1925.

I hereby certify that the plat hereon delineated is a correct one
 and that permanent monuments consisting of 1/2 x 18 inch Iron stakes
 have been planted at points marked "a" as thereon shown at all angles
 in the boundaries of the land platted and at all intersections of
 streets or streets and alleys.
 Notary Public, L. S.
 Registered Civil Engineer

That the above Plat and Subdivision is hereby subjected to the follow-
 ing agreement and covenant which shall be observed by these proprietors
 herein described and by their successors and assigns and the heirs,
 executors and administrators, and assigns of them to-wit:
 That at no time within a period of 25 years shall any lot in said
 Subdivision or part thereof or any building thereon be sold, rented,
 leased, transferred or conveyed to, nor shall the same be occupied by
 excepting as a domestic servant, any Negro or colored person or per-
 sons of Negro blood.

COUNTY OF MACOMB, MICHIGAN
 Received for Record this 22nd day
 of August, A.D. 1925, at
 10 o'clock A.M. and Recorded
 in Liber 1101 of ... of ...
 on Page 68
 Notary Public, L. S.
 My Commission Expires... 1927

Notary Public, L. S.
 My Commission Expires... 1927

Notary Public, L. S.
 My Commission Expires... 1927

F-08

1925 H.R. D'AMARA

KELLY PARK SUBDIVISION

A PART OF THE SW 1/4 OF SEC. 21, T14N, R13E

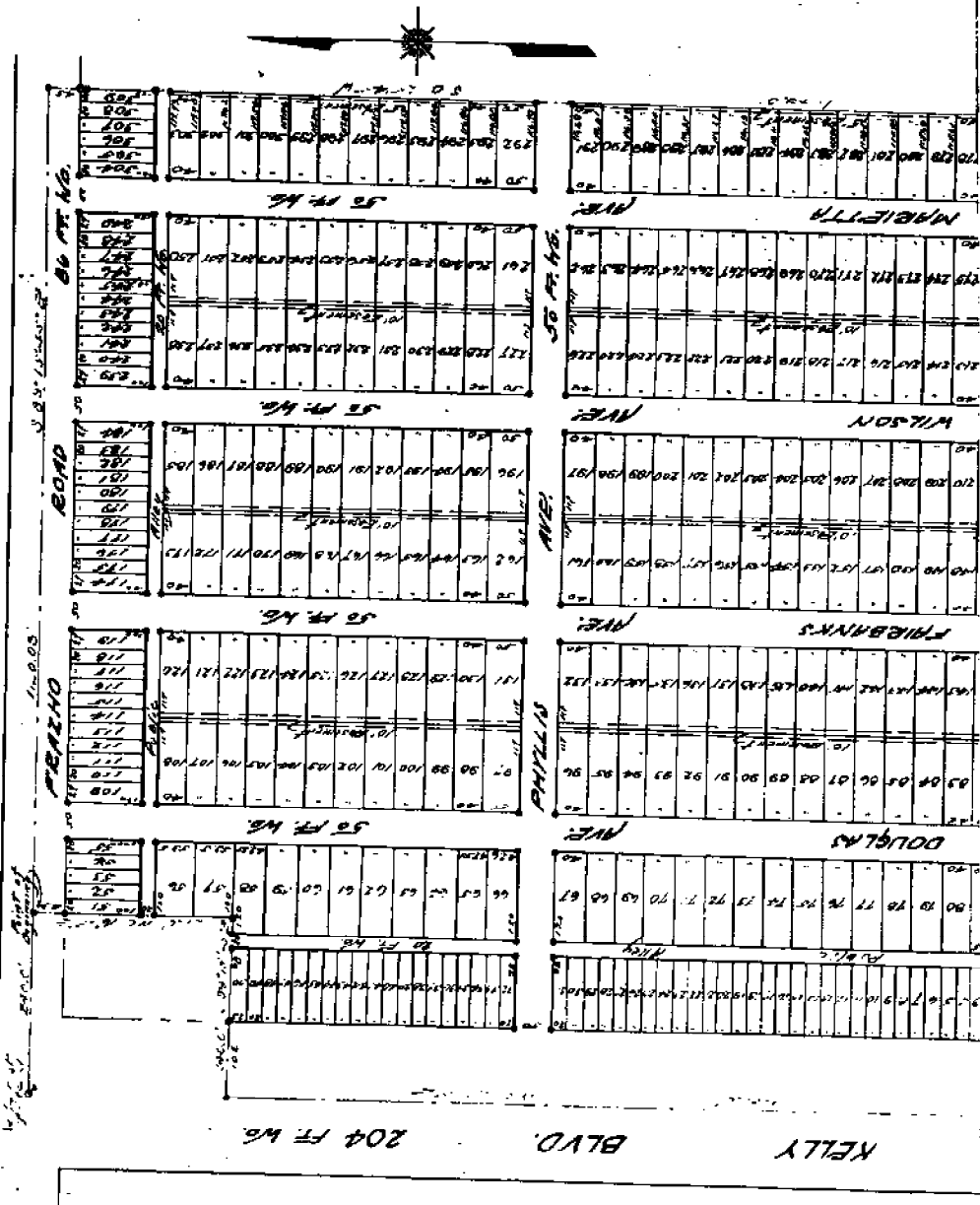
ERIN TWP. MACOMB CO. MICH.

EXAMINED

April 2-1925
J. L. HANCOCK

2112

Scale - 1" = 40'



This is to certify that the above plat was approved by the Township Board of the Township of ...

Sept. 16 24 James L. Gillett

This plat was approved by the Township Board of the Township of ...

James L. Gillett

RECORDS OFFICE
COUNTY OF MADISON

Washington Township, Mich.
A. D. 1924
11:07
11:07
11:07

11:07



Copy of ...
On this ... day of ... 1924
before me, a Notary Public in and for said County, personally
know the above named ...
know to me to be the persons who executed the above plat
copies, and acknowledged the same to be their free act and deed
Notary Public, Madison Co., Mich.
Commission Expires Dec 10 1925

This is to certify that the above plat was approved by the
Township Board of the Township of ...
County, Michigan, at a meeting held this ... day of ... 1924
Otto ... Township Clerk

I hereby certify that the plat herein delineated is a correct one
and that permanent monuments consisting of 1/2 x 18 inch iron
stakes have been planted at points marked "a" as shown
shown at all angles in the boundaries of the land platted and
at all intersections of streets or highways and alleys.

James L. Gillett

[F-08]

14
10

1920 W.J. LEHNER No. 123

71 Key 900000

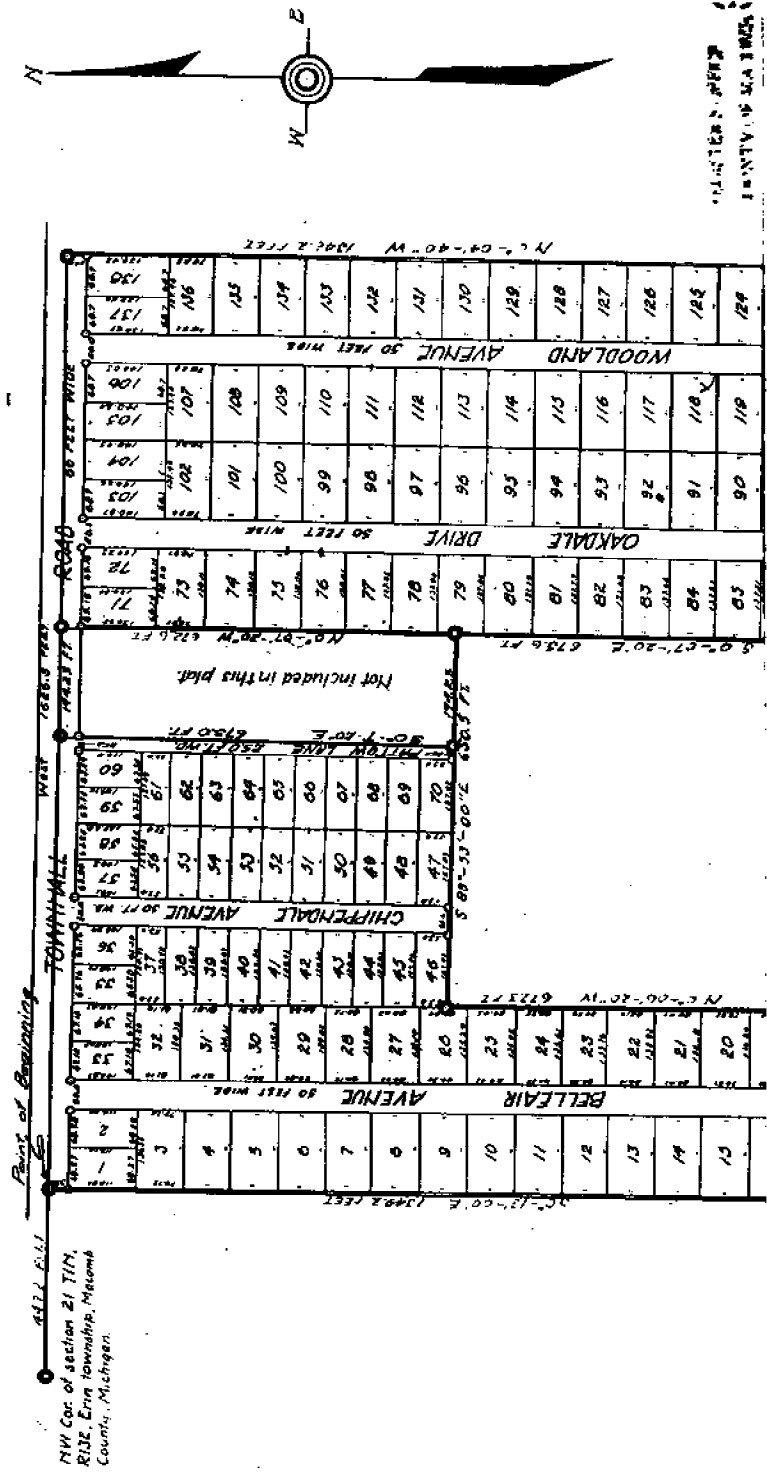
Examined and Approved
Pet. 28-1923
Geo. L. Hamer

"PATTOW SUBDIVISION"

OF A PART OF THE NE & NW 1/4 OF SEC. 21 T1N, R12E, ERIN TWP.
MACOMB COUNTY, MICHIGAN.

Walter J. Lehner, Reg. Civil Engineer
Muskegon, Michigan.

Scale: 1" = 200'



REGISTERED
PLAT
IN THE
OFFICE OF THE
CLERK OF THE
SHERIFF
MACOMB COUNTY, MICHIGAN

F-CE

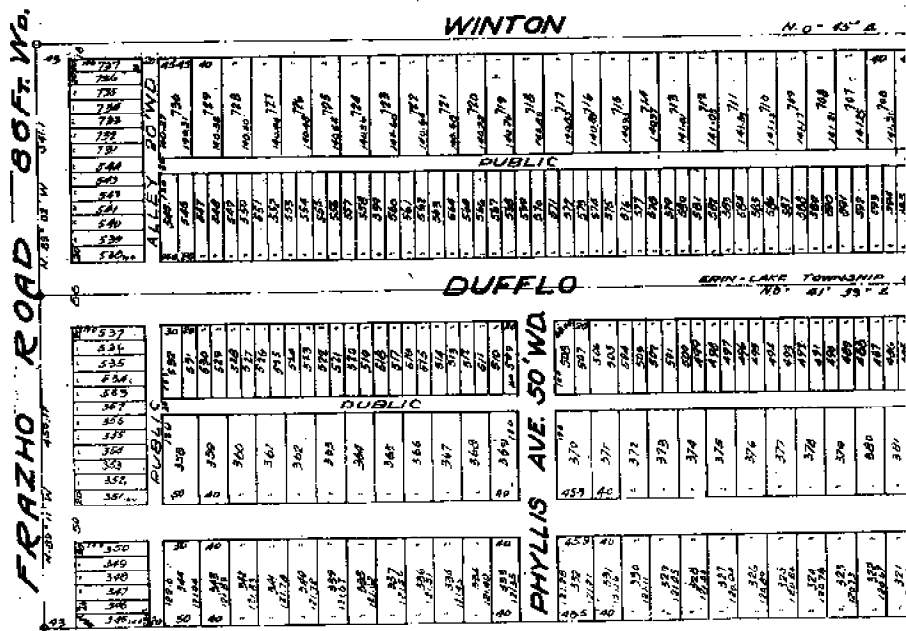
1925

H.R. O'MARA (C.E.)

LAWNDALE PARK SUBDIVISION No. 1
 BEING A PART OF SW 1/4 & PART OF W 1/2 OF SE 1/4 SEC. 21
 ERIN AND LAKE TWPS. MACOMB CO. MICH.

26-1925

SCALE - 1" = 150'



On this 26th day of August 1925 before me, a Notary Public in and for said county, personally came the above named Erin & Lake Twp. & Macomb Co. Mich. and they acknowledged the same to be their free act and deed.

Signed and sealed in the presence of John R. Hoff (L.S.)
John R. Hoff (L.S.)
John R. Hoff (L.S.)
Marvin Chase (L.S.)
George A. King (L.S.)
Robert L. King (L.S.)

STATE OF MICHIGAN 1925

On this 26th day of August 1925 before me, a Notary Public in and for said county, personally came the above named Erin & Lake Twp. & Macomb Co. Mich. and they acknowledged the same to be their free act and deed.

Signed and sealed in the presence of John R. Hoff (L.S.)
John R. Hoff (L.S.)
Marvin Chase (L.S.)
George A. King (L.S.)
Robert L. King (L.S.)

My Commission expires April 8, 1928

GEORGE W. TRIN & LANS TRUSTEES

This plat was approved by the Township Boards of Erin & Lake Twps. at a public meeting held on the 14 day of August A.D. 1925.

John R. Hoff
 Notary Public

P. 21

See Order Vacating Plat of Jan 798 Page 448
 See Notice to Vacate Public Alley dated 789 of Records Page 52

CERTIFICATE OF PLAN & LANE TRAC. BOARD

at a public meeting held on the 4 day of January A.D. 1924.

John J. ...
TOWNSHIP CLERK

John J. ...
LAKE TOWNSHIP CLERK

ENGINEER'S CERTIFICATE

I hereby certify that the plat herein delineated is a correct one and that permanent monuments consisting of an iron gaspipe 18" long have been placed at all points marked (c) as shown shown at all angles in the boundaries of the land platted and at all intersections of streets or streets and alleys.

W. R. ...
REGISTERED CIVIL ENGINEER

DESCRIPTION

Beginning at the S. & post of Sec. 21, T. 1 N. R. 13 E. Thence S. 89° 06' E. a distance of 343.6'. Thence N. 0° 45' E. a distance of 2698.45'. Thence N. 89° 06' W. a distance of 343.17'. Thence N. 89° 11' W. 456.17 ft. Thence S. 0° 45' W. 2698.5 ft. Thence S. 89° 12' E. 451.16' to point of beginning.

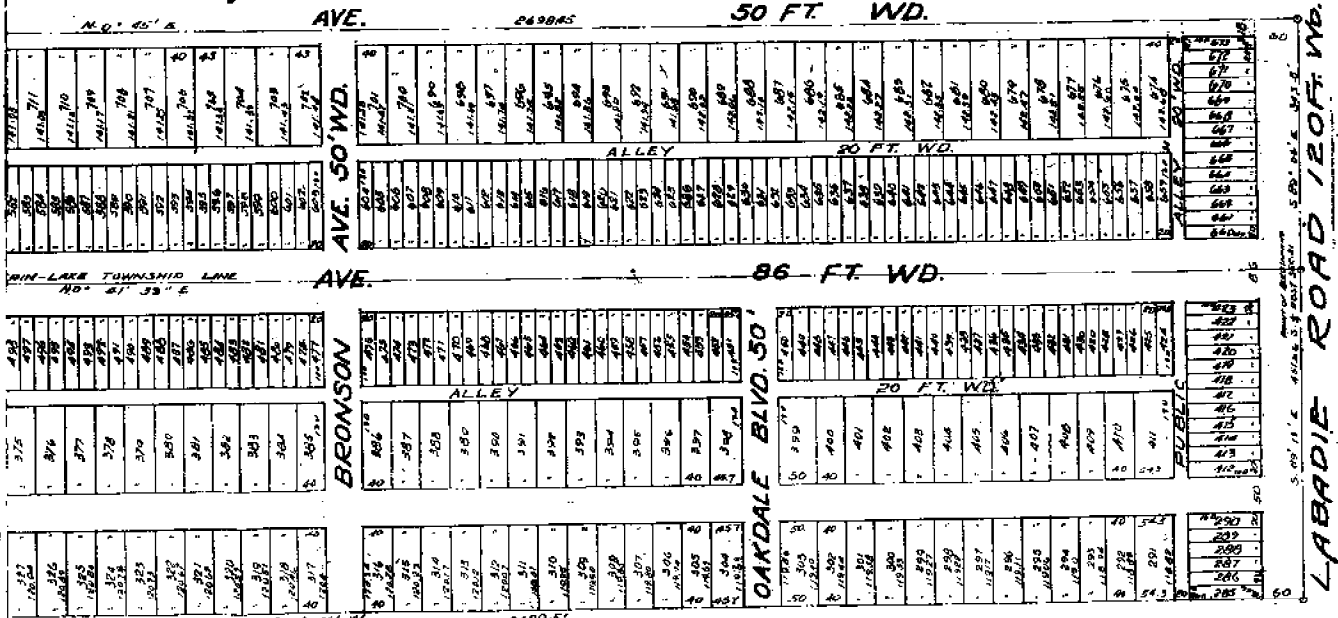
The above plat and subdivision is hereby subjected to the following agreement and covenant which shall be observed by the proprietors herein described and their successors and assigns, and the heirs, executors, administrators and assigns of them, to-wit: That no lot shall any lot in said subdivision or part thereof or any building thereon be sold, rented, leased, transferred, or conveyed, to, or shall the same be occupied, excepting as a domestic servant, any Negro or colored person of 1870, 1880.

REGISTER'S OFFICE
County of Macomb, Mich.

Received for Record this 2 day of Jan A.D. 1924 at 11:15 o'clock AM and Recorded in Liber 12 of Plats on Page 21

John J. ...
Register

John J. ...
TOWNSHIP CLERK



of Dec'd Page 96 by Resolution for vacating Alley Lanes 123 of Deeds page 372

Resolution of Dec 1034 Page 489

F-087

1925 W J LEHNER No 123

GRAND HIGHWAY SUBDIVISION

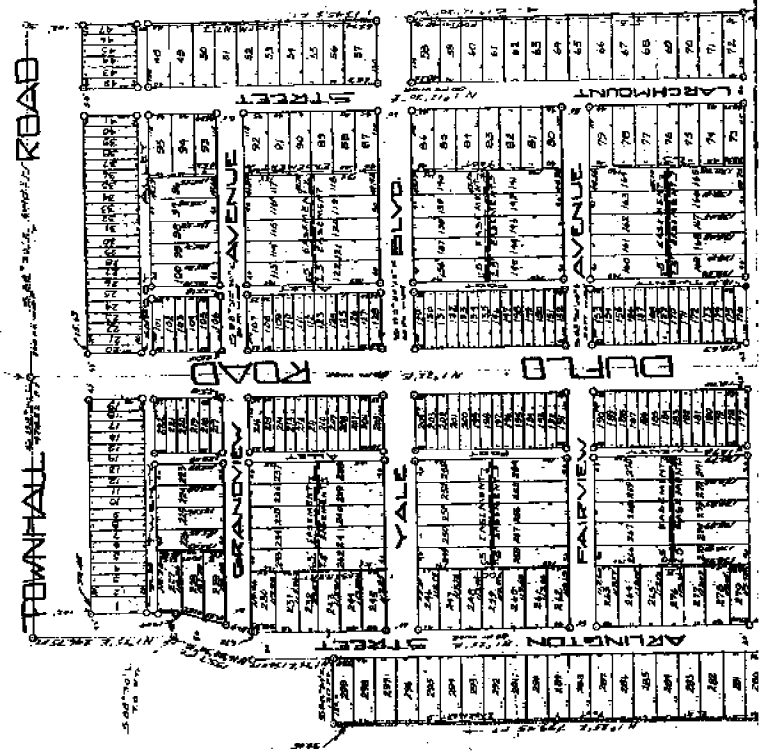
"HILKALENS"
E. RIN & LAKE TWP. PART OF THE NORTH & SEC. 21 T. 13 N. R. 10 E. MICHIGAN

W. J. LEHNER REG. CE.
MOUNT CLEMENS, MICH.

Aug 31-1925
Chas. L. ...

SCALE
1" = 200'

L. 9
P. 91



REGISTER'S OFFICE } ss.
County of Macomb }
Received for Record this ... day
of ... A.D., 1925 at
... o'clock P.M. and Recorded
In Liber ... of ...
on Page ...
Charles L. ... Register.

See Replat of Lots 40 to 48 and 49 to 57
Order of Variation of Plat See ...

1	2	3	4	5	6	7	8	9	10	11	12	13	14	15	16	17	18	19	20	21	22	23	24	25	26	27	28	29	30	31	32	33	34	35	36	37	38	39	40	41	42	43	44	45	46	47	48	49	50	51	52	53	54	55	56	57	58	59	60	61	62	63	64	65	66	67	68	69	70	71	72	73	74	75	76	77	78	79	80	81	82	83	84	85	86	87	88	89	90	91	92	93	94	95	96	97	98	99	100
---	---	---	---	---	---	---	---	---	----	----	----	----	----	----	----	----	----	----	----	----	----	----	----	----	----	----	----	----	----	----	----	----	----	----	----	----	----	----	----	----	----	----	----	----	----	----	----	----	----	----	----	----	----	----	----	----	----	----	----	----	----	----	----	----	----	----	----	----	----	----	----	----	----	----	----	----	----	----	----	----	----	----	----	----	----	----	----	----	----	----	----	----	----	----	----	----	----	----	-----

In Liber 91 of *Richard*
 on Page 21
Thomas M. Magallon, Reg. Register

Description of Land Platted
 The land embraced in the annexed plat of H. L. Allen's GRAND HIGHWAY SUBDIVISION part of the N. 1/2 of Sec. 21, T.1.N.R.13, E., 3rd and Lake Twp., Macomb County, Michigan is described as follows:
 Beginning at the N. 1/4 post, Sec. 21, T.1.N.R.13, E. on the line between Erin and Lake Twp., Macomb County, Mich., thence S. 88°30' E. 645.2 ft., thence S. 191°30' W. 1345.5 ft., thence N. 88°30' W. 653.84 ft., thence S. 88°30' E. 126.0 ft., thence N. 1°25' E. 799.45 ft., thence S. 88°30' E. 185.7 ft., thence S. 88°30' E. 150.0 ft., thence N. 1°25' E. 246.75 ft., thence S. 88°30' E. 478.52 ft. to the point of beginning.

This is to certify that the above plat was approved by the Township Board of the Township of Erin, Macomb County, Michigan, at a meeting held this 27th day of Apr. 7, 1928.
Clara A. Peters, Township Clerk

This is to certify that the above plat was approved by the Township Board of the Township of Erin, Macomb County, Michigan, at a meeting held this 27th day of Apr. 7, 1928.
Robert J. Johnson, Township Clerk

I hereby certify that the plat herein delineated is a correct one and that permanent monuments consisting of 1/2 inch iron stakes have been planted at points marked "a" as thereon shown at all angles in the boundaries of the land platted and at all intersections of streets or streets and alleys.

Robert J. Johnson
 Registered Civil Engineer

That the above plat and subdivision is hereby subjected to the following agreement and covenant which shall be observed by the Proprietors herein ascribed and their successors and assigns of them to wit:

That at no time shall any lot in said subdivision or part thereof or any building thereon be sold, rented, leased, transferred or conveyed to, nor shall the same be occupied by, excepting as domestic servants, any Negro or colored person or persons of Negro blood.

James L. Gilbert
 Notary Public

Know all men by these presents that Louis A. Peters and Clara A. Peters, his wife and Harry L. Allen a single man, and Herman Blohm and Alwine Blohm his wife, as proprietors, have caused the land embraced in the annexed plat to be surveyed, laid out and platted, to be known as "H. L. Allen's Grand Highway Subdivision" part of the North 1/2 Sec. 21, T.1.N.R. 13, E. 3rd and Lake Twp., Macomb Co., Michigan and that the streets and alleys as shown on said plat are hereby dedicated to the use of the public.

Signed & Sealed in the Presence of:
Robert J. Johnson
Harry L. Allen
Herman Blohm
Alwine Blohm

State of Michigan S.S.
 County of Macomb
 On this 27th day of April, 1928,
 before me, a Notary Public in and for said County, personally came the above named Louis A. Peters and Clara A. Peters, his wife,

known to me to be the persons who executed the above dedication, and acknowledged the same to be their free act and deed.

My Commission Expires Dec. 31, 1928
 Notary Public, Macomb Co., Mich.

STATE OF MICHIGAN
 County of Macomb
 On this 26th day of May, 1928, before me, a Notary Public in and for said County, personally came the above named Harry L. Allen a single man, and Herman Blohm and Alwine Blohm, his wife, known to me to be the persons who executed the above dedication, and acknowledged the same to be their free act and deed.

Robert J. Johnson
 Notary Public, Macomb Co., Mich.
 My Commission Expires Dec. 31, 1928

This act was approved by the Township Board of the Township of Erin, Macomb County, Michigan, at a meeting held this 27th day of Apr. 7, 1928.
Clara A. Peters
James L. Gilbert

Notary Public, Macomb Co., Mich.
 My Commission Expires Dec. 31, 1928

Notary Public, Macomb Co., Mich.
 My Commission Expires Dec. 31, 1928

Notary Public, Macomb Co., Mich.
 My Commission Expires Dec. 31, 1928

Notary Public, Macomb Co., Mich.
 My Commission Expires Dec. 31, 1928

Notary Public, Macomb Co., Mich.
 My Commission Expires Dec. 31, 1928

4 Apr. 13. to 176 inv., Liber 25 of Plate on page 24

to See Liber 876 page 256 of Deeds

1691

288

14

Commencing at the center post of said Sec. 21, and thence extending
 S. 87°-34'-30"W. 1354.51 ft; thence S. 20°-14'W. 33 ft; to the place of
 beginning of this description; thence extending S. 87°-34'-30"W. 577.0 ft;
 thence S. 20°-14'W. 2802.6 ft; thence N. 87°-42'-30"W. 577.0 ft; thence
 N. 2°-14'W. 2804.4 ft. to the place of beginning of this description.

SURVEYOR'S CERTIFICATE.
 I hereby certify that the plat hereon delineated is a correct one and
 that permanent metal monuments of not less than one inch in diameter and
 fifteen inches in length set in a concrete base at least four inches in
 diameter and forty eight inches in depth have been placed at points in
 marked thus (c) as thereon shown at all angles in the boundaries of the
 land platted, at all interections of streets, and at the intersections
 of streets with the boundaries of the plat as shown on said plat.

Walter J. Lehner
 Walter J. Lehner,
 Register, Land Surveyor.

CERTIFICATE OF MUNICIPAL APPROVAL.
 This plat was approved by the Village Board of the Village of St. Clair
 Shores, Macomb Co., Mich., at a meeting held March 15 A.D. 1938.

Walter P. Pratt
 Walter P. Pratt
 Village Clerk.

CERTIFICATE OF APPROVAL BY COUNTY BOARD.
 This plat was approved on the 24th day of March A.D. 1938.

Ray H. Callens
 Ray H. Callens
 Judge of Probate.

Welson Zitt
 Welson Zitt
 County Clerk.

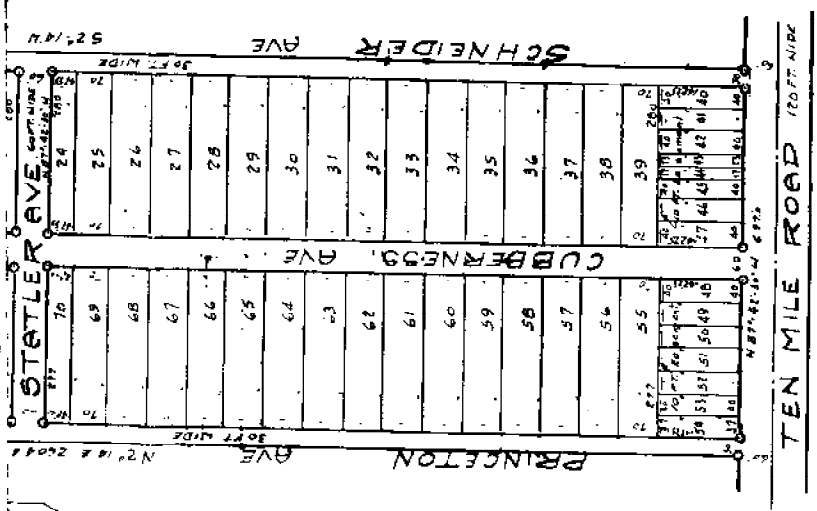
Carl B. Brandenburg
 Carl B. Brandenburg
 County Treasurer.

REGISTER'S OFFICE
 County of Macomb

Received for Record this _____ day
 of MAY 4 1938 A.D. 19____ at
1:25 o'clock P.M. and Recorded
 in Liber 19 of Plats
 on Page 14

Walter J. Lehner
 Register

5/3/38
Wm. J. Jemison
 Wm. J. Jemison



See plat of same in Vol. 19 of Records, page 139
 See plat of same in Vol. 19 of Records, page 139
 See Release " 962 of same of Record

1 F-031

W. J. LEWIS No. 123

Aug 21 1930
L. C. Hanna

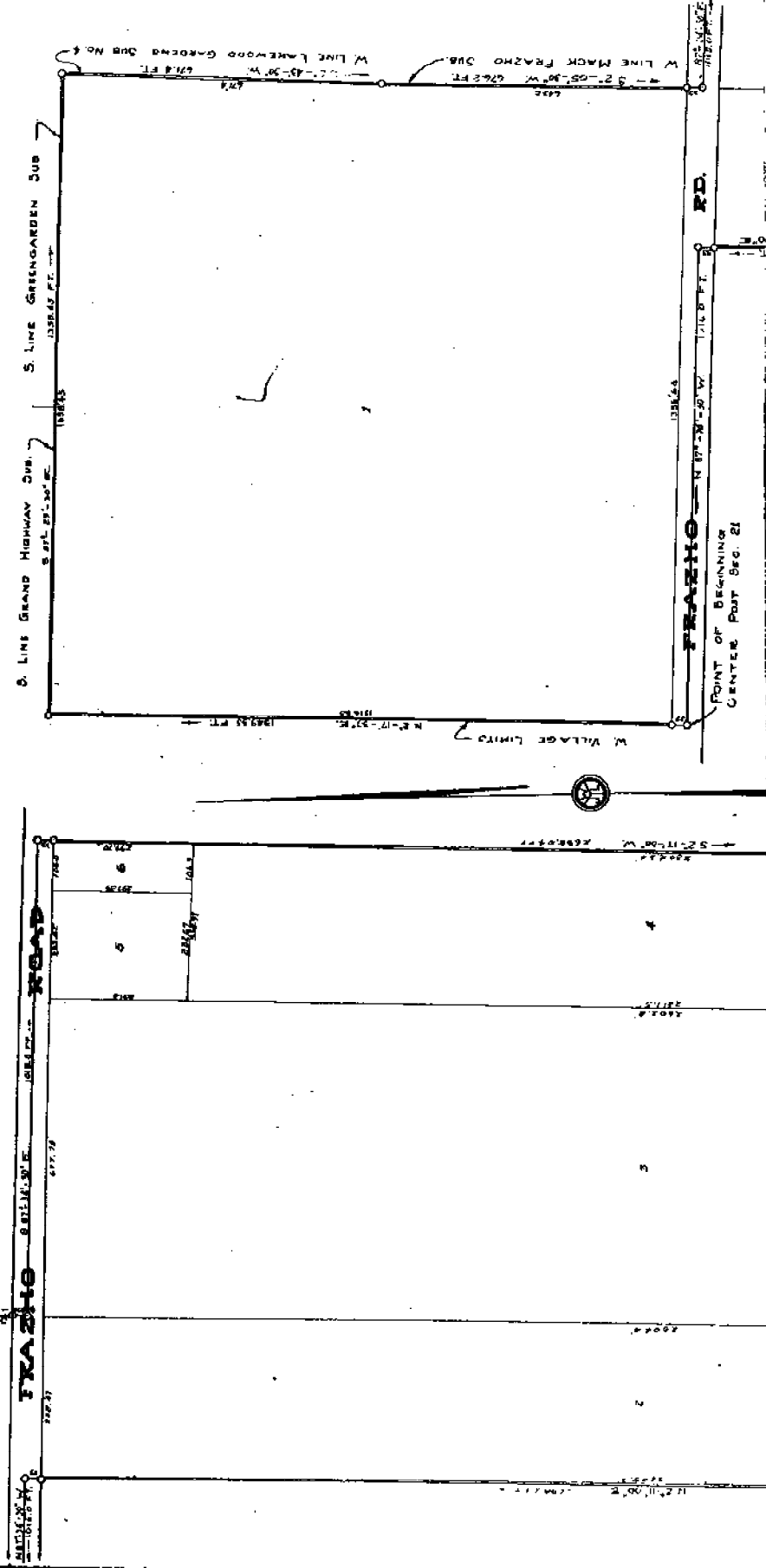
ASSESSORS PLAT No 17

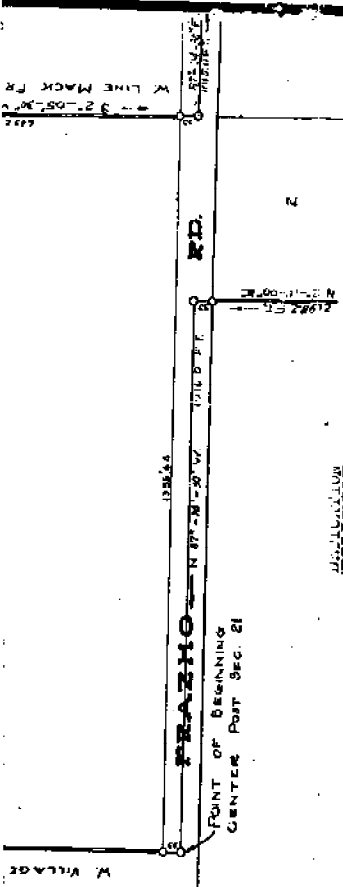
A PART OF THE E. 1/4 OF SEC. 21, T. 13. 13. E.

VILLAGE OF ST CLAIR SHORES MACOMB CO. MICH.

SCALE 1"=200'

WALTER J. LEWIS & CO. REC. C. B.
MRS. CLEMENTS TICH.

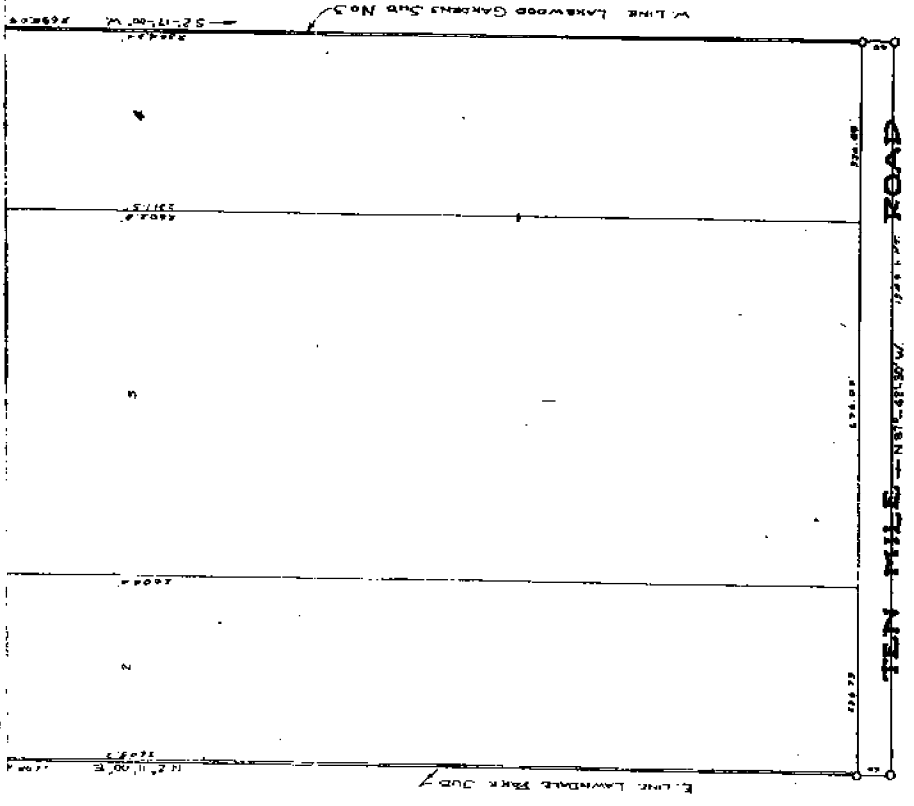




of the village of St. Clair shores, Adams county, Wisconsin, Association of authority in the matter of section 21, Act of 17th July, 1856, as amended, which have been approved by the Village Commission, have been the same as the original plat to be made, and that the plat to be made is as follows: 17th July, 1856, Act of 17th July, 1856, as amended, which have been approved by the Village Commission, have been the same as the original plat to be made, and that the plat to be made is as follows:

Exhib. M. 1000
Richard Thompson
 Surveyor of Adams County, Wis.
John A. Taylor
 Member of the Village Commission

Commission expires Feb. 24, 1922
 Survey made in and for Adams Co.

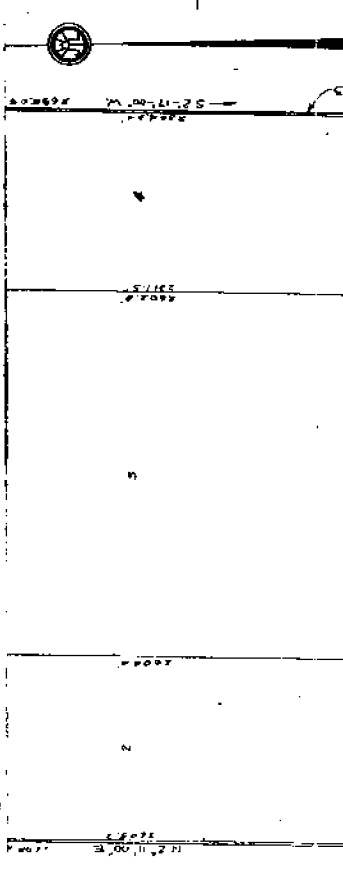


I hereby certify that the plat herein delineated is a correct one and that permanent metal monuments of not less than one inch in diameter and fifteen inches in length set in a concrete base at least four inches in diameter and forty eight inches in depth have been placed at points marked thus \odot as thereon shown at all places in the boundaries of the long plat, at all the intersections of streets and alleys of all ways or of streets and alleys and at the intersections of streets and alleys with the boundaries of the plat as shown on said plat.

Richard Thompson
 Registered Civil Engineer

This plat was approved by the County Board for Adams County, Wisconsin, at a meeting held July 25, 1920.

Charles H. ...
 Chairman of Board of Public Works
...
 County Treasurer



of the village of St. Clair shores, Adams county, Wisconsin, Association of authority in the matter of section 21, Act of 17th July, 1856, as amended, which have been approved by the Village Commission, have been the same as the original plat to be made, and that the plat to be made is as follows:

Exhib. M. 1000
Richard Thompson
 Surveyor of Adams County, Wis.
John A. Taylor
 Member of the Village Commission

Commission expires Feb. 24, 1922
 Survey made in and for Adams Co.

The same located in the present part of Adams county, Wisconsin, at a point on the W. 1/2 Sec. 21, T. 21 N., R. 21 W., Adams Co., Wis., as follows:

Location of the center post of Sec. 21, T. 21 N., R. 21 W., Adams Co., Wis., as follows: 17th July, 1856, Act of 17th July, 1856, as amended, which have been approved by the Village Commission, have been the same as the original plat to be made, and that the plat to be made is as follows:

This plat was approved by the Village Commission of the village of St. Clair shores at a meeting held July 25, 1920.

Richard Thompson
 Registered Civil Engineer

REGISTERED OFFICE
 County of Adams, Wis.

Received for Record this July 25, 1920 A.D. 1920
 in Liber ... of Page ...

Richard Thompson
 Register

F-08

W J LEHNER No. 123

Resolution No. 214947, 287
Resolution No. 214947, 287
Resolution No. 214947, 287

"INGLESIDE FARMS SUB No 3"

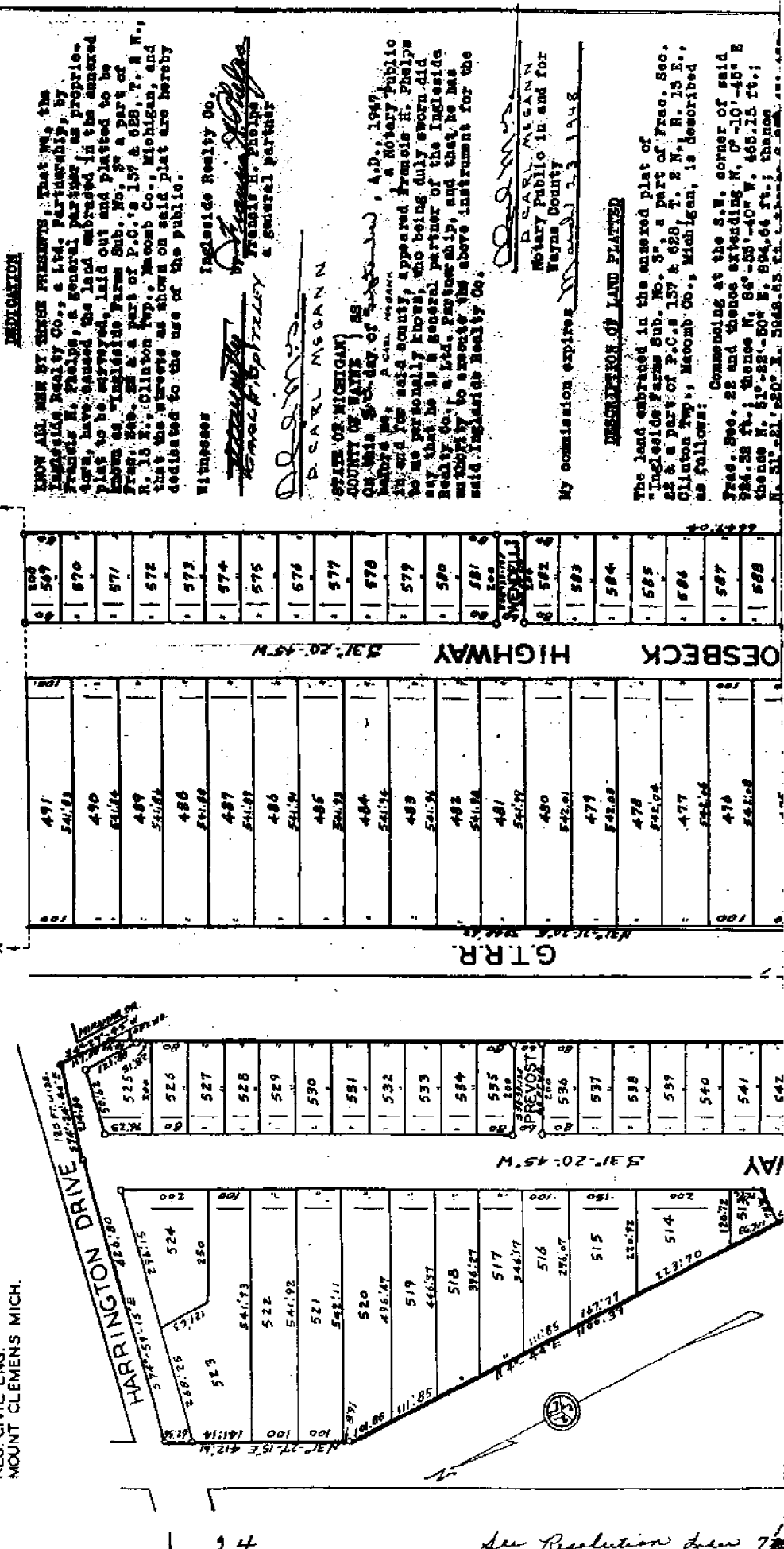
A PART OF FRAC. SEC. 22 & A PART OF P.C.'s 137 & 628 T.2N., R.13E.
CLINTON TWP. MACOMB CO. MICHIGAN

27885

NOTES: All dimensions in feet and decimals thereof.

SCALE 1/16" = 200 FT.

WALTER J. LEHNER
REG. CIVIL ENG.
MOUNT CLEMENS MICH.



KNOW ALL MEN BY THESE PRESENTS, that we, the Ingleside Realty Co., a Ltd. Partnership, by Francis H. Phelps, a general partner as proprietor, have caused the land embraced in the annexed plat to be surveyed, laid out and platted to be known as Ingleside Farms Sub. No. 3, a part of P.C.'s 137 & 628 T.2N., R.13E., and that the interests as shown on said plat are hereby dedicated to the use of the public.

Witness
 Ingleside Realty Co.
 Francis H. Phelps
 a general partner

D. CARL MCGANN
 STATE OF MICHIGAN
 COUNTY OF WAYNE
 On this 5th day of August, A.D. 1947
 before me, a Notary Public in and for said county, appeared Francis H. Phelps, who being duly sworn, did say that he is a general partner of the Ingleside Realty Co., a Ltd. Partnership, and that he has authority to execute the above instrument for the said Ingleside Realty Co.

D. CARL MCGANN
 Notary Public in and for
 Wayne County
 My commission expires 2-3-1948

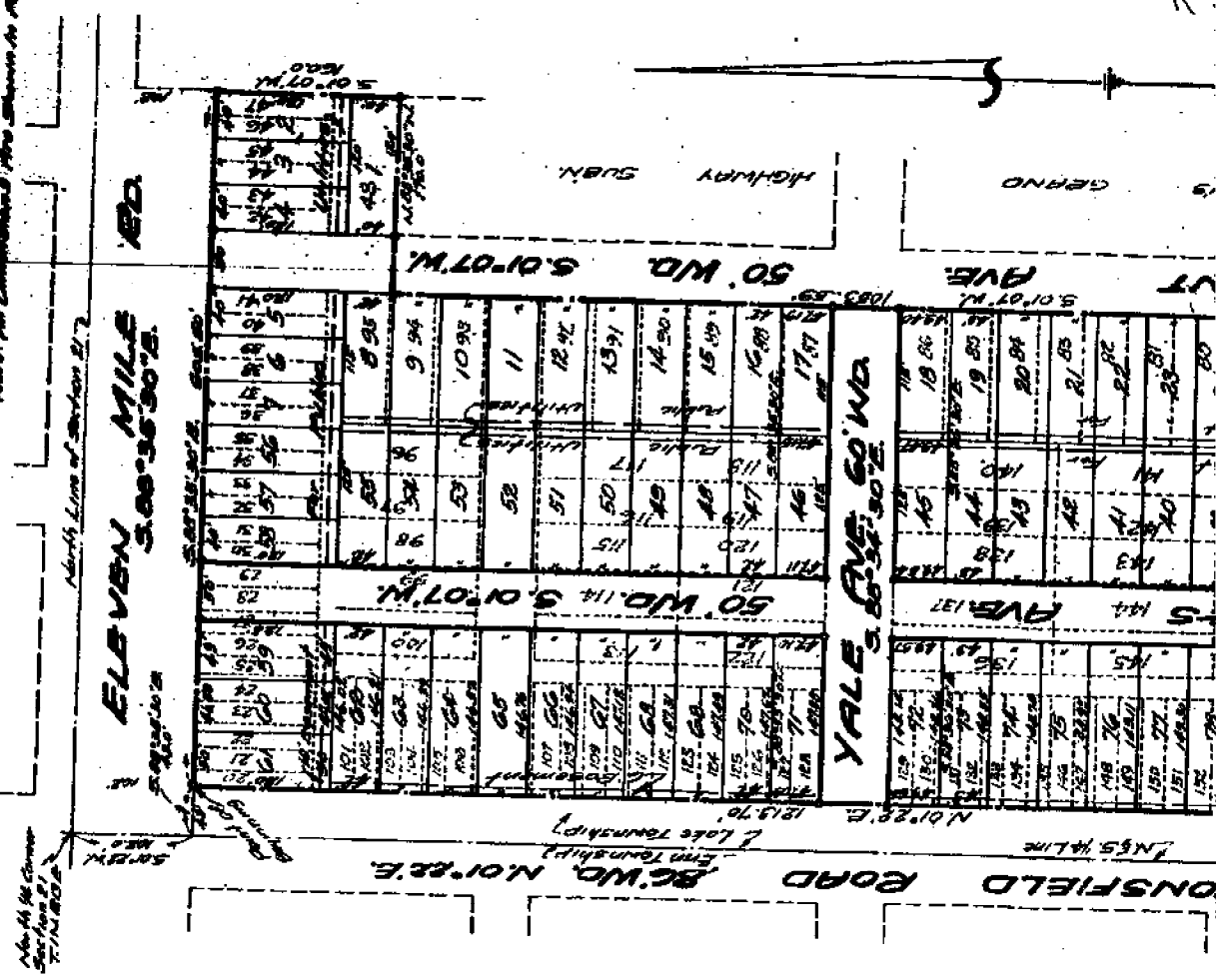
DESCRIPTION OF LAND PLATTED
 The land embraced in the annexed plat of Ingleside Farms Sub. No. 3, a part of P.C. Sec. 22 & a part of P.C.'s 137 & 628, T. 2 N., R. 13 E., Clinton Twp., Macomb Co., Michigan, is described as follows: Commencing at the S.W. corner of said P.C. Sec. 22 and thence extending N. 7°-10'-45" E. 284.58 ft.; thence N. 84°-55'-40" W. 465.15 ft.; thence N. 51°-22'-50" E. 894.64 ft.; thence N. 51°-21'-50" E. 594.43 ft.; thence S. 71°-10'-45" W. 284.58 ft. to the point of beginning.

L. 24
D 24

See Resolution drawn 7/24

45484
 REGISTRY OFFICE
 County of Macomb
 Received for Recording on
FEB 28 1950
 of
 1827 A. D. 19
 in Liber 35 of Book
 on Page 24
 Lawrence B. Burt
 Notary Public
 Macomb, Michigan

HARBO GRAND SUBDIVISION
 OF PART OF TOWNSHIP OF LAKESHORE ST.
 TOWN OF ST. CLAIR SHORES, MACOMB COUNTY, MICHIGAN.
 BEING 1/4 100.



KNOW ALL MEN BY THESE PRESENTS, THAT WE, STATE OF MICHIGAN,
 SUCCESSOR TO THE STATE LAND OFFICE BOARD, A PUBLIC CORPORATION, AS
 THE TITLE HOLDER, HAVE CAUSED THE LAND ENBRACED IN THE ANNEXED PLAT
 TO BE SURVEYED, LAID OUT AND PLATTED, TO BE KNOWN AS HARBO GRAND
 SUBDIVISION OF PART OF THE E.E. 1/4 OF SECTION 21, T.1-N.R.19-E.
 LAKE TOWNSHIP, VILLAGE OF ST. CLAIR SHORES, MACOMB COUNTY, MICHIGAN,
 AND THAT THE STREETS AND EASEMENTS AS SHOWN ON SAID PLAT ARE HEREBY
 DEDICATED TO THE USE OF THE PUBLIC.

DEPARTMENT OF CONSERVATION
 FOR THE STATE OF MICHIGAN
J. J. Hoffmaster
 J. J. HOFFMASTER, DIRECTOR

ACKNOWLEDGMENT
 STATE OF MICHIGAN
 COUNTY OF INGHAM

ON THIS 24th DAY OF JANUARY 1950, BEFORE ME, THE
 UNDERSIGNED, A NOTARY PUBLIC IN AND FOR SAID COUNTY, PERSONALLY
 APPEARED J. J. HOFFMASTER, TO ME KNOWN TO BE THE PERSON WHO EXECUTED
 THE FOREGOING DEDICATION, WHO, BEING BY ME DULY SWORN, DID SAY THAT
 HE IS THE DIRECTOR OF THE DEPARTMENT OF CONSERVATION AND THAT THE
 SEAL AFFIXED TO SAID INSTRUMENT IS THE SEAL OF SAID DEPARTMENT AND
 THAT SAID INSTRUMENT WAS SIGNED AND SEALED BY AUTHORITY OF THE
 DEPARTMENT OF CONSERVATION ACTING FOR AND ON BEHALF OF THE STATE
 OF MICHIGAN AND THAT SAID J. J. HOFFMASTER ACKNOWLEDGED SAID
 INSTRUMENT TO BE THE FREE ACT AND DEED OF THE DEPARTMENT OF
 CONSERVATION ACTING FOR AND ON BEHALF OF THE STATE OF MICHIGAN AND
 THE FREE ACT AND DEED OF THE STATE OF MICHIGAN.

Miss F. M. ...
 NOTARY PUBLIC, INGHAM CO., MICH.
 BY COMMISSION EXPIRES Sept 20, 1952

DEDICATION

KNOW ALL MEN BY THESE PRESENTS THAT WE HARBO CO., A
 MICHIGAN CORPORATION BY MAX HAMBURGER, PRESIDENT, AND HARVEY
 HAMBURGER, SECRETARY, AS PROPRIETOR, HAVE CAUSED THE LAND
 ENBRACED IN THE ANNEXED PLAT TO BE SURVEYED, LAID OUT AND
 PLATTED TO BE KNOWN AS HARBO GRAND SUBDIVISION OF PART OF THE
 E.E. 1/4 OF SECTION 21, T.1-N.R.19-E., LAKE TOWNSHIP, VILLAGE
 OF ST. CLAIR SHORES, MACOMB COUNTY, MICHIGAN AND THAT THE
 STREETS AND EASEMENTS AS SHOWN ON SAID PLAT ARE HEREBY
 DEDICATED TO THE USE OF THE PUBLIC

SIGNED AND SEALED IN THE PRESENCE OF
Max Hamburger PRESIDENT
Harvey Hamburger SECRETARY



HARBO CO.
 STONES AND BECKER IN THE PRESENCE OF
 Max Harburger, PRESIDENT
 Harvey Harburger, SECRETARY

ACKNOWLEDGMENT
 STATE OF MICHIGAN
 COUNTY OF WAYNE

ON THIS 29th DAY OF December A.D. 1950 BEFORE ME
 A NOTARY PUBLIC IN AND FOR SAID COUNTY
 KNOWN, WHO BEING EACH BY ME HARVEY HARBURGER TO BE PERSONALLY
 PRESIDENT AND SECRETARY RESPECTIVELY OF THE HARBO CO., A
 MICHIGAN CORPORATION, AND THAT THE SEAL AFFIXED TO SAID
 INSTRUMENT IS THE CORPORATE SEAL OF SAID CORPORATION AND THAT
 SAID INSTRUMENT WAS SIGNED AND SEALED IN BEHALF OF SAID
 CORPORATION BY AUTHORITY OF ITS BOARD OF DIRECTORS AND THE
 SAID MAX HARBURGER AND HARVEY HARBURGER ACKNOWLEDGED SAID
 INSTRUMENT TO BE THE FREE ACT AND DEED OF SAID CORPORATION.

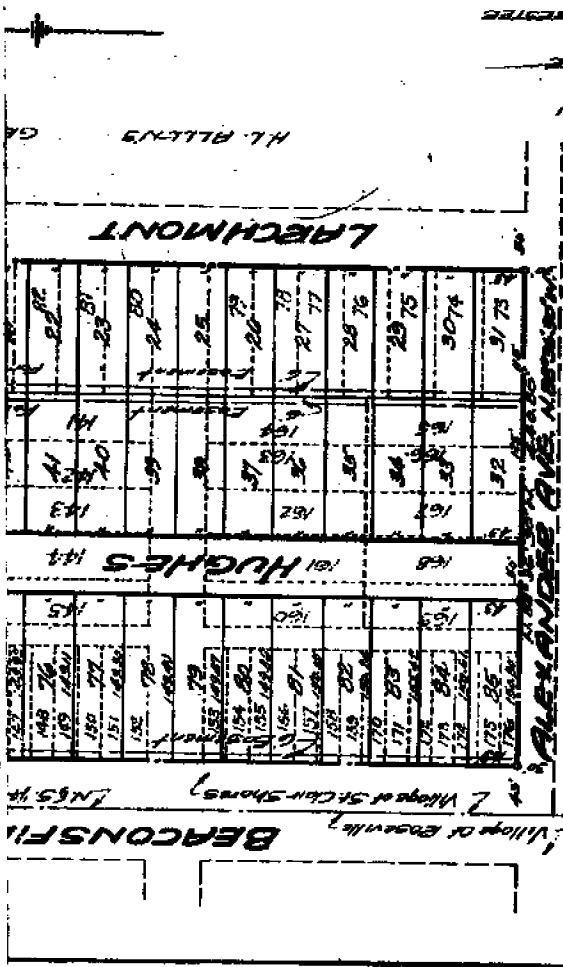
BY COMMISSION EXPIRES
 1951-1951
 Notary Public Wayne County Mich.

DESCRIPTION OF LAND PLATTED

THE LAND EMBRACED IN THE ANNEXED PLAT OF HARBO GRAND
 SUBDIVISION OF PART OF THE N.E. 1/4 OF SECTION 21, T.1 N.R.19 E.,
 LAKE TOWNSHIP, VILLAGE OF ST. CLAIR SHORES, MACOMB COUNTY,
 MICHIGAN, BEING A REVISION OF LOTS NUMBERED 20 TO 48 INCLUSIVE,
 AND LOTS NUMBERED 79 TO 176 INCLUSIVE, OF M.L. ALLEN'S GRAND
 HIGHWAY SUBDIVISION, ERIN AND LAKE TOWNSHIPS, MACOMB COUNTY,
 MICHIGAN, A PART OF THE NORTH 1/2 OF SECTION 21, T.1 N.R.19 E.,
 ACCORDING TO THE PLAT THEREOF RECORDED IN LIBER 9 PAGE 91 OF PLATS,
 MACOMB COUNTY RECORDS, IS DESCRIBED AS FOLLOWS:

BEGINNING AT A POINT ON THE SOUTH LINE OF THE ELEVEN MILE
 ROAD, SO CALLED, SAID POINT BEING S.1°-22' W., 102.00' AND S. 89°-
 51' N.-R.12 E., 42.00 FEET FROM THE NORTH 1/4 CORNER OF SECTION 21,
 T.1 N.-R.12 E.,
 THENCE S. 88°-39'-30" E., ALONG THE SOUTH LINE OF THE
 CLEVER HILL ROAD, 608.50 FEET TO A POINT;
 THENCE S. 1°-07' W., 160.00 FEET TO A POINT;
 THENCE N. 88°-28'-30" W., 170.00 FEET TO A POINT;
 THENCE S. 1°-07' W., 1035.99' TO A POINT;
 THENCE N. 88°-38'-30" E., 440.80 FEET TO A POINT;
 THENCE N. 1°-22' E., ALONG THE EAST LINE OF BEACONSFIELD
 ROAD, 1413.70 FEET TO THE POINT OF BEGINNING.

This is to certify that there are no other claims on this land than those shown on this plat and that the same are in full compliance with the laws of this State.
 Notary Public Wayne County Mich.
 1950



CERTIFICATE OF APPROVAL BY
 BOARD OF COUNTY ROAD COMMISSIONERS
 This plat has been examined and approved on
 the day of February, 1950
 by the Board of County Road Commissioners
 of Macomb County.
 Chairman, W. E. Mallow
 Vice-Chairman, Roy Chalmers
 Member, Alfred Forrester

This plat was approved by the COMMISSION
 of the TOWNSHIP of ST. CLAIR SHORES
 at a meeting held January 7, 1950
 APPROVAL BY COUNTY BOARD
 1950
 Aaron Burr (County Treasurer)
 Eugene L. Ross (County Clerk)
 Lynn Whalen (County Treasurer)

I hereby certify that the plat herein attached is a correct one and that permanent
 metal measurements consisting of bars and less than one-half inch in diameter and all inches
 in length, or shorter bars of not less than one-half inch in diameter, tapered over each
 other at least 6 inches with an equal length of not less than 1/2 inch, were used in
 concrete cylinder of least 4 inches in diameter and not less than 1/2 inch in length
 of points marked thereon. I or someone else have placed the same in the hands of the
 local platting, or all the intersections of streets, highways, railroads, waterways and
 other, and at the intersections of streets and adjacent to the platting of streets or
 shown on said plat.

Examined and Approved

1950
 C. R. B. T. F. F.
 No. 74

1950
 C. R. B. T. F. F.
 No. 74
 5
 E-08

IAL

718

51508

L 25
P 34

VICIA T. BARNES SUBIN

21 OF THE SE 1/4 OF NW 1/4 OF SEC. 21, T1N., R13E.,
of ROSEVILLE MACOMB CO., MICHIGAN.

ACKNOWLEDGMENT

STATE OF MICHIGAN
 County of MACOMB
 On this 9th day of MAY 1956, before me,
 a Notary Public in and for said County, personally came the above named
PATRICIA T. BARNES AND MARVA S. BANGE

1:16 12 21 PM '56

in the annexed plat to be surveyed,
 la. T. Barnes Subd'n
 Sec. 21, T1N., R13E.,
 Michigan.

known to me to be the persons who executed the above declaration, and acknowledged
 the same to be their free act and deed.
Margaret S. Day
 Notary Public, MACOMB County
 My Commission expires October 22, 1957

MUNICIPAL APPROVAL

This plat was approved by the Village Commission
 of the Village of Roseville
 at a meeting held March 30, 1956
Melen E. MacDonell
Harlan S. MacDonell Deputy (Chair)

APPROVAL BY COUNTY BOARD

This plat was approved on the 12th day of
May 1956
Carroll Burns
Harlan S. MacDonell County Treasurer of Macomb
Lucille S. Howe
Charles E. Howe (County Clerk)
Lynn Whelan
Wynne Whelan (County Treasurer)

SURVEYOR'S CERTIFICATE

I hereby certify that the plat hereto delineated is a correct one and that permanent
 metal monuments consisting of bars not less than one-half inch in diameter and 48 inches
 in length, or shorter bars of not less than one-half inch in diameter tapered over each
 other at least 6 inches with an over-all length of not less than 48 inches, secured in a
 concrete cylinder of least 4 inches in diameter and 48 inches in depth have been placed
 at points marked thus: (O) as shown above at all angles in the boundaries of the
 land platted, at all the intersections of streets, intersections of alleys, or of streets and
 alleys, and at the intersections of streets and alleys with the boundaries of the plat as
 shown on said plat.

Pierre J. O'Non
 Registered Land Surveyor (or Professional Engineer)
PIERRE J. O'NON

Examined and Approved
May 25, 1956
Alfred J. ...
 County Clerk

CERTIFICATE OF APPROVAL BY BOARD OF COUNTY ROAD COMMISSIONERS

This plat has been examined and approved on
 the 10th day of MAY 1956
 by the Board of County Road Commissioners
 of Macomb County.

Wm. E. Malow
 Chairman
Ray ...
 Vice-Chairman
Alfred ...
 Member
RIFKED FORBSTER

REGISTER'S OFFICE
 County of Macomb

Received for Record this 12th day
 of May A.D. 1956 at
12:24 o'clock P. and Recorded
 in Liber 25 of State
 on Page 34
Antel Mayette

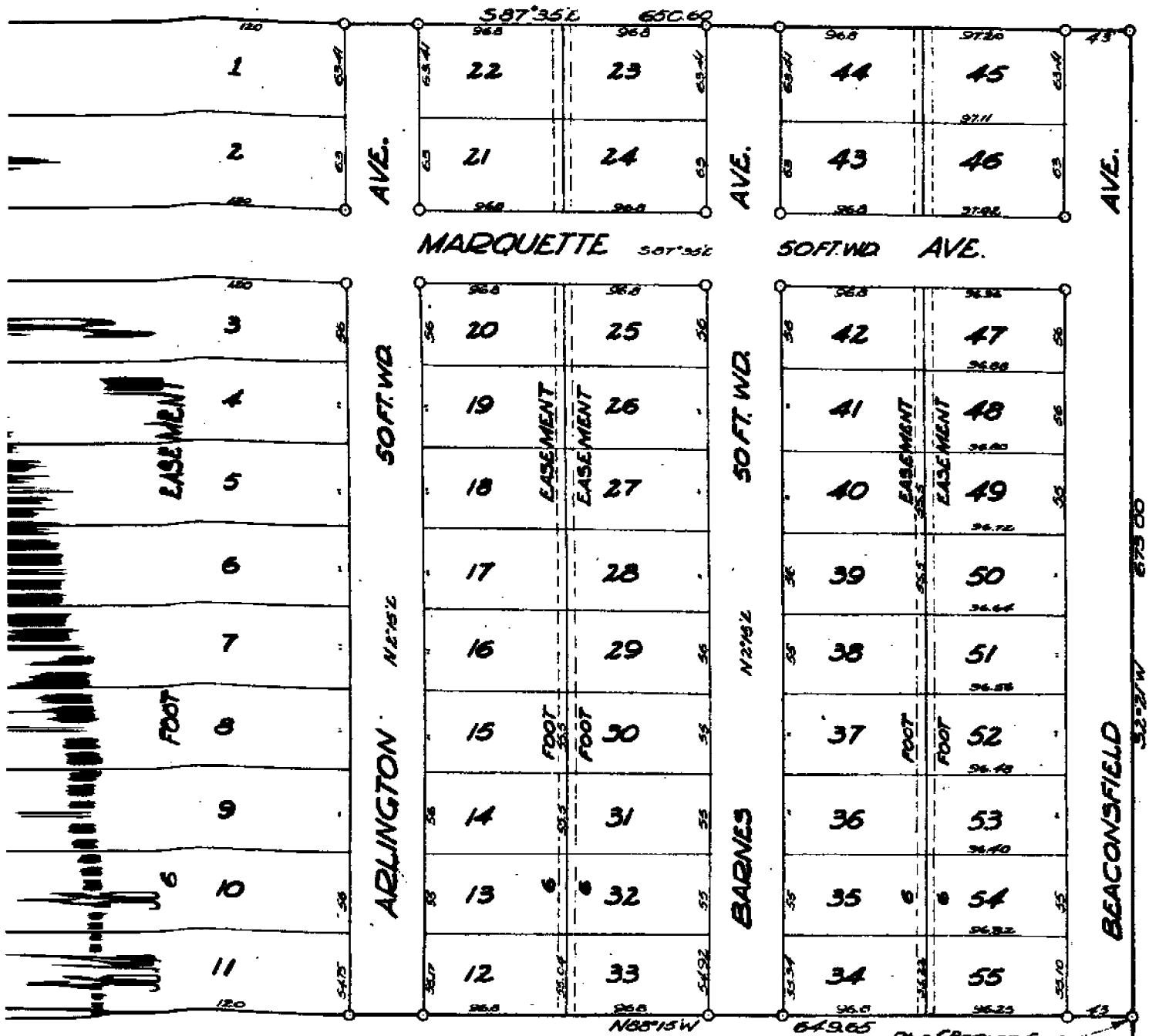
1956 P.J. O'NON

F08

True
472°

EX 1564 13
7-3-50

J. J. [unclear]



Scale: 1 in. = 60 ft.

ALL MEASUREMENTS ARE IN FEET & DECIMALS THEREOF

CON. PLOT SEC. 21
T1N. R13E

ORIGINAL
BEE LAND SURVEY CO.
6-19-50

4-8

BARBARA BARNES SUBDN

OF THE SE 1/4 OF THE NW 1/4 OF SECTION 21, T1N, R13E,
VILLAGE OF ROSEVILLE MACOMB Co. MICHIGAN

DEDICATION

KNOW ALL MEN BY THESE PRESENTS, that we
PATRICIA T. BARNES, ANA MARCEL S. DENISE,

as proprietors, have caused the land embraced in the annexed plat to be surveyed, laid out and platted, to be known as, BARBARA BARNES Subd'n. of the SE 1/4 of the NW 1/4 of Sec. 21, T1N, R13E, Village of Roseville, Macomb Co., Mich.

and that the streets as shown on said plat are hereby dedicated to the use of the public.

Signed and Sealed in the presence of:

Donald F. Wain (Witness) *Patricia T. Barnes* (P.T.B.)
Donald A. Cuty (Witness) *Marcel S. Denise* (M.S.D.)

ACKNOWLEDGMENT

STATE OF MICHIGAN
County of Macomb
On this 14th day of August, 1950, before me, a Notary Public in and for said County, personally came the above named PATRICIA T. BARNES, ANA MARCEL S. DENISE,

known to me to be the persons who executed the above dedication, and acknowledged the same to be their free act and deed.

Marcel S. Denise
Notary Public, Macomb County
My Commission expires Oct. 22, 1951.

Examined and Approved

Patricia Barnes
Proprietor

DESCRIPTION OF LAND PLATTED

The land embraced in the annexed plat of
Barbara Barnes Subd'n. of the SE 1/4 of the NW 1/4 of Sec. 21, T1N, R13E, Village of Roseville, Macomb Co., Michigan
is described as follows: Commencing at the Center Post, Sec. 21, T1N, R13E, Village of Roseville, Macomb Co., Michigan. Thence N 2°21' E, 673.95 ft. to the point of beginning. Thence N 88° 18' W 649.55 ft.; thence N 2°15' E, 630.55 ft.; thence S 87°35' E, 630.50 ft.; thence S 2°21' W, 673.00 ft. to the point of beginning.

SURVEYOR'S CERTIFICATE

I hereby certify that the plat herein delineated is a correct one and that permanent metal monuments consisting of bars not less than one-half inch in diameter and 48 inches in length, or shorter bars of not less than one-half inch in diameter lapped over each other at least 6 inches with an over-all length of not less than 48 inches, secured in a concrete cylinder of least 4 inches in diameter and 48 inches in depth have been placed at points marked thus (.....O.....) as thereon shown at all angles in the boundaries of the land platted, at all the intersections of streets, intersections of alleys, or at streets and alleys, and at the intersections of streets and alleys with the boundaries of the plat as shown on said plat.

Pierre J. O'Non

Pierre J. O'Non
Registered Land Surveyor

MUNICIPAL APPROVAL

This plat was approved by the Village of Roseville at a meeting held July 14, 1950.

Arthur E. DeWitt
Village Clerk
ROSEVILLE, MICHIGAN

APPROVAL BY COUNTY BOARD

This plat was approved on the 29th day of August, 1950.

Arnon Burr (County Register of Deeds)
John H. H. Hoff (County Clerk)
Lynn Whalen (County Treasurer)

REGISTER'S OFFICE
County of Macomb
Received for Record this 29th day of August, 1950.
in Book _____ of _____
at _____ M. and Recorded
on _____
at _____

L. 25
P. 48

1950

P.J. O'NON Reg. 6213

F-08

6 E 156 E Sec 21
1950
grrh
MVC.
83500
MERC
MICHIGAN
MRS. L. A. DENISE

F 8

1951

C.T. BROWN

CAROLINE SUBDIVISION
OF PART OF THE S. W. 1/4 OF SEC. 21, T.1N., R.13E.,
VILLAGE OF ROSEVILLE, MACOMB CO., MICHIGAN.

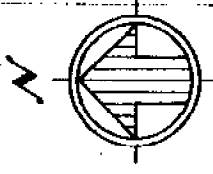
MARION L. BROWN & SON
 CIVIL ENGINEERS
 180 CALHOUN AVE.
 EAST LANSING, MICH.

Scale: 1" = 100'

NOTE: Dimensions shown are in feet & decimals thereof

FRANZO RD. 86 FT WID
 N. 0° 48' 29" E. 30 FT WID

1	2	3	4	5	6	7	8	9	10	11	12	13	14	15	16	17	18	19	20	21	22	23	24	25	26	27	28	29	30		
32	31	30	29	28	27	26	25	24	23	22	21	20	19	18	17	16	15	14	13	12	11	10	9	8	7	6	5	4	3	2	1
32	31	30	29	28	27	26	25	24	23	22	21	20	19	18	17	16	15	14	13	12	11	10	9	8	7	6	5	4	3	2	1



DEDICATION

KNOW ALL MEN BY THESE PRESENTS, That we, Clifford Greenburg and Gladys Greenburg, his wife, and Grace C. Wagner, as Proprietors, and the Frisco Building Company, by Lester Burton, President, and Michael Shure, Secretary, as Trustees, have caused the land embraced in the annexed plat to be surveyed, laid out and platted to be known as CAROLINE SUBDIVISION of part of the S.W. 1/4 of Sec. 21, T. 1 N., R. 13 E., Village of Roseville, Macomb Co., Michigan, and that the streets shown on said plat are hereby reserved to the use of the public and that the easements indicated on said plat are to be excepted from the use of public utilities and that no permanent structures are to be erected within the limits of said easement. Regulation of the use thereof is reserved in the local governmental authority.

Witness my hand and seal
 William F. Hill
 Ruth King

Clifford Greenburg
 Gladys Greenburg
 Grace C. Wagner

William F. Hill
 Ruth King

PRIN BUILDING COMPANY
 Lester Burton, President
 Michael Shure, Secretary

ACKNOWLEDGMENT

State of Michigan }
 County of Macomb }

On this 27th day of December, 1950, before me, a Notary Public in and for said County, personally came the above named Clifford Greenburg and Gladys Greenburg, his wife, and Grace C. Wagner, known to me to be the persons who executed the above dedication, and acknowledged the same to be their free act and deed.

My commission expires

APRIL 30 1954

Richard W. Munson
 Notary Public

Richard W. Munson
Notary Public

APRIL 30 1954

22	31
23	30
24	29
25	28
26	27

CHURCH ARE 30 FT.

State of Michigan }
County of Washtenaw }
On this 27th day of December 1950, before me, a Notary Public in and for said county, appeared Lester Burton and Nathaniel Shure, to me personally known, who being each by me duly sworn did say that they are the President and Secretary respectively of the Trade Building Company, a Michigan Corporation, and that the seal affixed to said instrument is the corporate seal of said corporation and that said instrument was signed and sealed in behalf of said corporation by authority of its Board of Directors and the said Lester Burton and Nathaniel Shure acknowledged said instrument to be the free act and deed of said corporation.
My commission expires

Richard W. Munson
Notary Public

APRIL 30 1954

DESCRIPTION

The land embraced in the annexed plat of CAROLINA SUBDIVISION of part of the S. E. 1/4 of Sec. 21, T. 1 N., R. 15 E., Village of Rossville, Washtenaw Co., Michigan, is described as follows: Beginning at a point, which point is distant S. 0°49'30" E., 1822.00 ft. and S. 89°18' W., 185.00 ft. from the S. 1/4 corner of Sec. 21, T. 1 N., R. 15 E.; thence S. 0°49'30" E., 1874.84 ft.; thence along the E. and N. 1/4 lines of Sec. 21, E. 89°18' W., 222.17 ft.; thence S. 0°45' W., 1574.60 ft.; thence S. 89°18' E., 220.26 ft. to the point of beginning.

SUBDIVISION CERTIFICATE

I hereby certify that the plat herein delineated is a correct one and that permanent metal monuments consisting of bars not less than one-half inch in diameter and 48 inches in length, encased in concrete cylinders at least 4 inches in diameter and 48 inches in depth have been placed at points marked thus (O) on thereon shown at all angles in the boundaries of the land platted, at the intersection of all streets and at the intersection of the streets with the boundaries of the plat.

L. T. Brown
L. T. Brown, Registered Land Surveyor

CERTIFICATE OF MUNICIPAL APPROVAL

I hereby certify that this plat has been approved by the Village Council of the Village of Rossville at a Regular meeting held on the 27th day of December, 1950.

Helen E. Howell
Deputy Village Clerk

Examined and Approved

Mayno Jewell Powell
County Auditor General

CERTIFICATE OF COUNTY APPROVAL

We hereby certify that this plat was approved by the Macomb County Plat Board at a Board meeting held on the 27th day of December, 1950

Carroll Burt, Chairman, Registrar of Deeds
Samuel L. Stone, Deputy County Clerk
Lynn Jackson, County Treasurer

CERTIFICATE OF APPROVAL BY BOARD OF COUNTY ROAD COMMISSIONERS

This plat has been examined and approved in the 27th day of December, 1950 by the Board of County Road Commissioners of Macomb County.

Wm. E. Galloway, Chairman
Roy C. Vio, Vice-Chairman
Alfred Hoarster, Member

REGISTERS OFFICE
County of Macomb
Received for Record this 16th day of January, A. D. 1951 at 11:26 o'clock A. M. and Recorded in Liber 26 of Chatham on Page 6
Christina J. ...

F-8

L. T. BROWN

1951

ORIGINAL

STELLA GARDENS SUBDIVISION
 OF PART OF THE S. W. 1/4 OF SEC. 21, T. 1 N., R. 15 E.,
 VILLAGE OF ROSEVILLE, MACOMB CO., MICHIGAN.

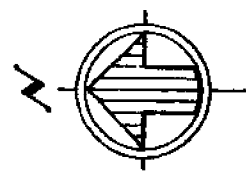
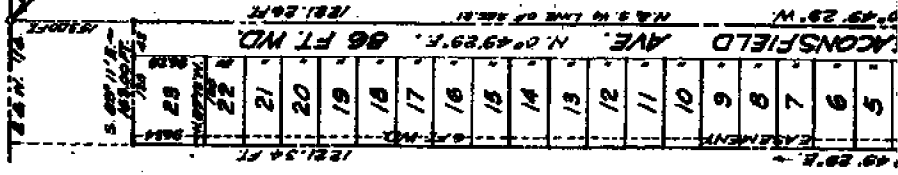
75092

MASON L. BROWN & SON
 CIVIL ENGINEERS
 120 MADISON AVE.
 DETROIT, MICHIGAN

Scale - 1" = 200'

NOTE: Dimensions shown are in feet & decimals thereof.

FRAZHO RD. 86 FT. W.D. (1947 M.L.S. 24.)



DEDICATION

KNOW ALL MEN BY THESE PRESENTS, that we, Clifford Greenburg and Gladys Greenburg, his wife, and Gress C. Wagner, as Proprietors, and the Prime Building Company, by Lester Burton, President, and Nathaniel Shure as Secretary, as Witnesses, have caused the land embraced in the annexed plat to be surveyed, laid out and platted to be known as STELLA GARDENS SUB-DIVISION of part of the S. W. 1/4 of Sec. 21, T. 1 N., R. 15 E., Village of Roseville, Macomb Co., Michigan, and that the streets shown on said plat are hereby dedicated to the use of the public and that the easement indicated on said plat is hereby reserved for the use of public utilities and that no permanent structures are to be erected within the lines of said easement. Regulation of the use thereof is vested in the local governmental authority.

Witnesses:

William P. Hull
 WILLIAM P. HULL
Ruth King
 RUTH KING

Clifford Greenburg
 CLIFFORD GREENBURG
Gladys Greenburg
 GLADYS GREENBURG
Gress C. Wagner
 GRESS C. WAGNER

PRIME BUILDING COMPANY

Lester Burton
 LESTER BURTON, PRESIDENT
Nathaniel Shure
 NATHANIEL SHURE, SECRETARY

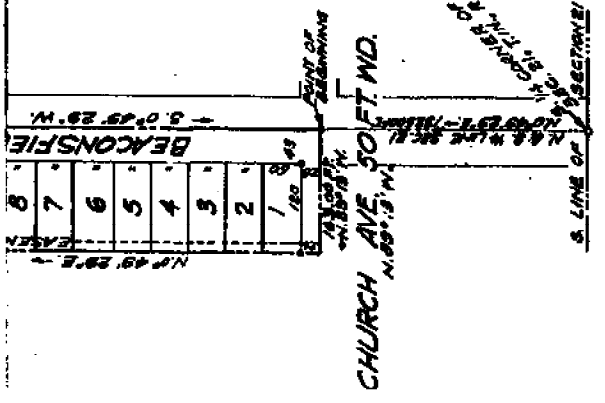
William P. Hull
 WILLIAM P. HULL
Ruth King
 RUTH KING

ACKNOWLEDGMENT

State of Michigan) ss.
 County of Macomb)

On this 21 day of February, 1950, before me, a Notary Public in and for said County, personally came the above named Clifford Greenburg and Gladys Greenburg, his wife, and Gress C. Wagner, known to me to be the persons who executed the above dedication, and acknowledged the same to be their free act and deed.

My commission expires



On this 14th day of March, 1950, before me, a Notary Public in and for said County, personally and the above named Clifford Greenburg and Gladys Greenburg, his wife, and Grace C. Wagner, known to me to be the persons who executed the above dedication, and acknowledged the same to be their free act and deed.

My commission expires _____

Walter Bailey
Notary Public

ACKNOWLEDGMENT

State of Michigan }
County of Macomb }

On this 14th day of March, 1950, before me, a Notary Public in and for said County, appeared Lester Burton and Nathaniel Share, to me personally known, who being each by me duly sworn did say that they are the President and Secretary respectively of the Friede Building Company, a Michigan corporation, and that the seal affixed to said instrument is the corporate seal of said corporation and that said instrument was signed and sealed in behalf of said corporation and that said instrument was signed and sealed in behalf of said corporation by authority of its Board of Directors and the said Lester Burton and Nathaniel Share acknowledged said instrument to be the free act and deed of said corporation.

My commission expires _____

Walter Bailey
Notary Public

DESCRIPTION

The land embraced in the annexed plat of STELLA GARDNER SUBDIVISION of part of the S. 1/4 of Sec. 21, T. 1 N., R. 13 E., Village of Roseville, Macomb Co., Michigan, is described as follows: Beginning at a point in the N. & S. 1/4 line of Sec. 21, which point is distant N. 0°49'29" E., 1325.00 ft. from the S. 1/4 corner of Sec. 21, T. 1 N., R. 13 E.; thence S. 89°11' E., 163.00 ft.; thence E. 0°49'29" E., 1321.36 ft.; thence S. 0°49'29" E., 1221.28 ft. to the point of beginning.

SURVEYOR'S CERTIFICATE

I hereby certify that the plat hereon delineated is a correct one and that permanent metal monuments consisting of bars not less than one-half inch in diameter and 48 inches in length, encased in concrete cylinders at least 4 inches in diameter and 48 inches in depth have been placed at points marked thus (O) as shown above at all angles in the boundaries of the land platted, at the intersection of all streets and at the intersection of the streets with the boundaries of the plat.

L. T. Brown
Registered Land Surveyor

CERTIFICATE OF MUNICIPAL APPROVAL

I hereby certify that this plat has been approved by the Village Council of the Village of Roseville, at a Public meeting held on the 14th day of March, 1950.

Edmund S. Smith
Deputy Village Clerk

Examined and Approved

Walter Bailey
Notary Public

CERTIFICATE OF COUNTY APPROVAL

We hereby certify that this plat was approved by the Macomb County Plat Board at a Board meeting held on the 14th day of March, 1950.

RECEIVED IN THE
COUNTY OFFICE
of Macomb
March 14, 1950
at 3:30 P.M.
and Recorded
in Liber 216
at 3:45 P.M.

Walter Bailey
Notary Public
Lester Burton, Secretary of the
Friede Building Company
Walter Bailey
Notary Public
Albert A. Warner, County Clerk

CERTIFICATE OF APPEAL BY BOARD OF COUNTY ROAD COMMISSIONERS

This plat has been examined and approved on the 28th day of December, 1950 by the Board of County Road Commissioners of Macomb County.

W. E. Malow
Chairman
Ray
Vice-Chairman
Alfred
Member

This is to certify that the above plat has been approved by the Board of County Road Commissioners of Macomb County.
Certified to the
COUNTY CLERK
Date 3-14-50
This plat has been recorded in Liber 216 at 3:45 P.M. on March 14, 1950.
Edmund S. Smith, Deputy Village Clerk

F-08

1951 C.T. BROWN # 2967

ORIGINAL

82618

LESTER GARDENS SUBDIVISION

OF PART OF THE S. W. 1/4 OF SEC. 21, T. 1 N., R. 13 E.,
VILLAGE OF ROSEVILLE, MACOMB CO., MICHIGAN.

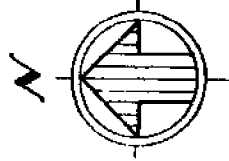
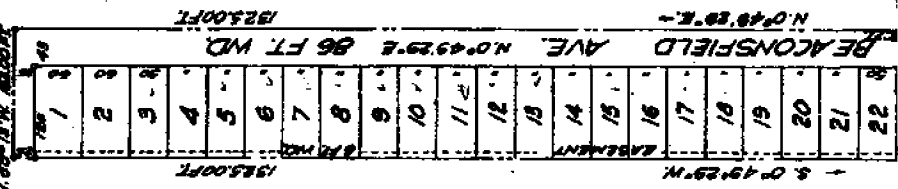
MASON L. BROWN & SON
CIVIL ENGINEERS
120 MADISON AVE.
DETROIT, MICHIGAN

Scale 1" = 100 FT.



NOTE: Dimensions shown are in feet & decimals thereof.

CHURCH AVE. MEASUREMENT SOFT. WD.



INDICATION

KNOW ALL MEN BY THESE PRESENTS, that we, Clifford Greenburg and Gladys Greenburg, his wife, and Grace C. Wagner, as Proprietors, and the Prime Building Company, by Lester Burton, President, and Nathaniel Shave, Secretary, as Vendees, have caused the land embraced in the annexed plat to be surveyed, laid out and platted to be known as LESTER GARDENS SUBDIVISION of part of the S. W. 1/4 of Sec. 21, T. 1 N., R. 13 E., Village of Roseville, Macomb Co., Michigan, and that the streets shown on said plat are hereby dedicated to the use of the public and that the easements indicated on said plat is hereby reserved for the use of public utilities and that no permanent structures are to be erected within the lines of said easement. Regulation of the use thereof is vested in the local governmental authority.

Witness:

William P. Holt
WILLIAM P. HOLT

Ruth A. Deary
RUTH A. DEARY

Clifford Greenburg
CLIFFORD GREENBURG

Gladys Greenburg
GLADYS GREENBURG

Grace C. Wagner
GRACE C. WAGNER

PRIME BUILDING COMPANY

Lester Burton
LESTER BURTON, President

Nathaniel Shave
NATHANIEL SHAVE, Secretary

ACKNOWLEDGMENT

State of Michigan) ss.

County of

On this _____ day of _____, 1950, before me, a Notary Public in and for said County, personally came the above named Clifford Greenburg and Gladys Greenburg, his wife, and Grace C. Wagner, known to me to be the persons who executed the above dedication, and acknowledged the same to be their free act and deed.

My commission expires

USER 28 3211

See Restrictions below 849 Pg 308

20	21	22	23	24	25	26	27
28	29	30	31	32	33	34	35

State of Michigan) as
County of Wayne

ACKNOWLEDGMENT

On this 13th day of March, 1961, before me, a Notary Public in and for said County, personally came the above named James B. Trombly and Violet M. Trombly, his wife, and Mary P. Sivad, known to me to be the persons who executed the above dedication, and acknowledged the same to be their free act and deed.

My commission expires 1-30-67

Ruth King
Notary Public

CERTIFICATE OF MUNICIPAL APPROVAL

I hereby certify that this plat has been approved by the Village Council of the Village of Roseville at a meeting held on the 13th day of March, 1961.

Howard S. Cochran
Village Clerk

CERTIFICATE OF COUNTY APPROVAL

We hereby certify that this plat was approved by the Macomb County Plat Board at a meeting held on the 13th day of March, 1961.

John Whelan, County Treasurer
Marion Burr, Register of Deeds
Frank E. Lohr
Albert A. ...

EXAMINED AND APPROVED
Thos. J. ...
County Auditor General

ACKNOWLEDGMENT

State of Michigan) as
County of Wayne

On this 13th day of March, 1961, before me, a Notary Public in and for said County, appeared James Arnold Berger and William P. Hull, to me personally known, who being each by me duly sworn did say that they are the President and Secretary respectively of the Gloria Construction Company, a Michigan Corporation, and that the seal affixed to said instrument is the corporate seal of said corporation and that said instrument was signed and sealed in behalf of said corporation and that authority of its Board of Directors and the said lenders Arnold Berger and William P. Hull acknowledged said instrument to be the free act and deed of said corporation.

My commission expires 1-30-67

Ruth King
Notary Public

DESCRIPTION

The land embraced in the annexed plat of RUTH SUBDIVISION of part of the S.E. 1/4 of Sec. 21, T. 1 N., R. 13 E., Village of Roseville, Macomb Co., Michigan, is described as follows: Beginning at a point in the S. & W. 1/4 line of Sec. 21, which point is distant S. 89°15'45" E., 1976.83 ft. from the W. 1/4 corner of Sec. 21, T. 1 N., R. 13 E.; thence along the E. & W. 1/4 line of Sec. 21, S. 89°15'45" E., 382.30 ft.; thence S. 0°37'13" W., 1374.50 ft.; thence N. 89°15'45" E., 292.50 ft.; thence N. 0°37'13" E., 1374.50 ft. to the point of beginning.

SURVEYOR'S CERTIFICATE

I hereby certify that the plat hereon delineated is a correct one and that permanent metal monuments consisting of bars not less than one-half inch in diameter and 48 inches in length, caused in concrete cylinders at least 4 inches in diameter and 48 inches in depth, have been placed at points marked thus (O) as thereon shown at all angles in the boundaries of the land platted, at the intersection of all streets, and at the intersection of the streets with the boundaries of the plat.

L. T. Stora
Registered Land Surveyor

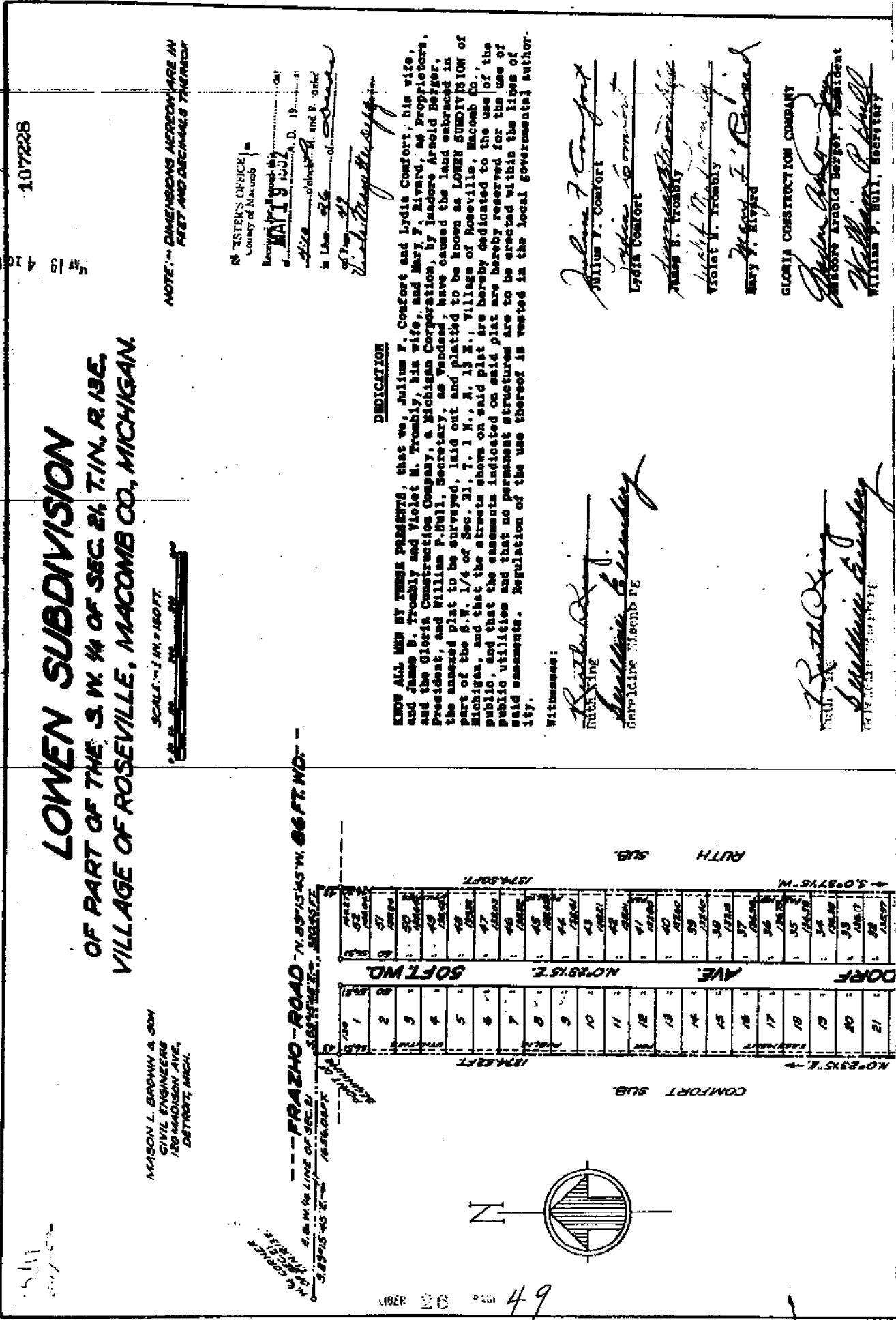
There is no entry hereon and no reference to this plat in any record or map made five years previous to date of this instrument. Reference is made to Macomb Co. R.R. 66-7 No. 512-3 and to Macomb Co. R.R. 66-7 No. 512-3 in relation to the location of the plat.

CHURCH AVE. N. 83°15'45" W. 25 FT. W.D.

F-08

72 P 49

1952 C.T. BROWN No. 2967



LOMEN SUBDIVISION
 OF PART OF THE S. W. 1/4 OF SEC. 24, T. 1 N., R. 1 E.,
 VILLAGE OF ROSEVILLE, MACOMB CO., MICHIGAN.

MASON L. BROWN & SON
 CIVIL ENGINEERS
 180 MADISON AVE.
 DETROIT, MICH.

SCALE - 1 IN. = 100 FT.

--- FRAZHO ROAD - N. 89° 15' 45" W. 66 FT. WD. ---
 2.00 M. W. LINE OF SEC. 24
 S. 89° 15' 45" W. 127 M. CORNER
 127 M. CORNER

107228

APR 19 4 10 PM '52

NOTE: DIMENSIONS HEREON ARE IN FEET AND DECIMALS THEREOF

REGISTERED OFFICE
 County of Macomb

Received by _____ of _____
 at _____, D. 19 _____
 Size of sheet _____ of _____
 in Lib. _____ of _____

William F. Comfort

DEDICATION

KNOW ALL MEN BY THESE PRESENTS, that we, Julius F. Comfort and Lydia Comfort, his wife, and James B. Trombly and Violet M. Trombly, his wife, and Mary F. Rivard, as Proprietors, and the Gloria Construction Company, a Michigan Corporation, by James Arnold Berger, President, and William F. Bull, Secretary, as Vendees, have caused the land embraced in the annexed plat to be surveyed, laid out and platted to be known as LOMEN SUBDIVISION of part of the S. W. 1/4 of Sec. 24, T. 1 N., R. 1 E., Village of Roseville, Macomb Co., Michigan, and that the streets shown on said plat are hereby dedicated to the use of the public, and that the easements indicated on said plat are hereby reserved for the use of public utilities and that no permanent structures are to be erected within the lines of said easements. Regulation of the use thereof is vested in the local governmental authority.

Witnesses:

William F. Comfort
 William F. Comfort
Lydia Comfort
 Lydia Comfort
James B. Trombly
 James B. Trombly
Violet M. Trombly
 Violet M. Trombly
Mary F. Rivard
 Mary F. Rivard

GLORIA CONSTRUCTION COMPANY

James Arnold Berger
 JAMES ARNOLD BERGER, President
William F. Bull
 WILLIAM F. BULL, Secretary

F-8

1952

C. Postiff

REC'D JUN 20 1952

DONALD N. SWEENEY'S SUB'N.
OF PART OF THE N.E. 1/4 OF SEC. 21
T.1N. E. 13 E.
CITY OF ST. CLAIR SHORES, MICHIGAN
MACOMB CO.,
SCALE 1"=100'

LOSS 14

LIBER 27 PAGE 1

DEDICATION

KNOW ALL MEN BY THESE PRESENTS, THAT WE, DONALD N. SWEENEY, AND AYES N. SWEENEY, HIS WIFE, AS PROPRIETORS, HAVE CAUSED THE LAND ENCLOSED IN THE ANNEXED PLAT TO BE SURVEYED, Laid out and platted, to be known as DONALD N. SWEENEY'S SUB'N. OF PART OF THE N.E. 1/4 OF SEC. 21, T.1 N.R.13 E., CITY OF ST. CLAIR SHORES, MACOMB CO., MICHIGAN, AND THAT THE STREETS AS SHOWN ON SAID PLAT ARE HEREBY DEDICATED TO THE USE OF THE PUBLIC AND THAT THE EASEMENTS INDICATED ARE HEREBY RESERVED FOR THE USE OF PUBLIC UTILITIES, AND THAT NO PERMANENT STRUCTURES SHALL BE ERRECTED WITHIN THE LINES OF SAID EASEMENTS.

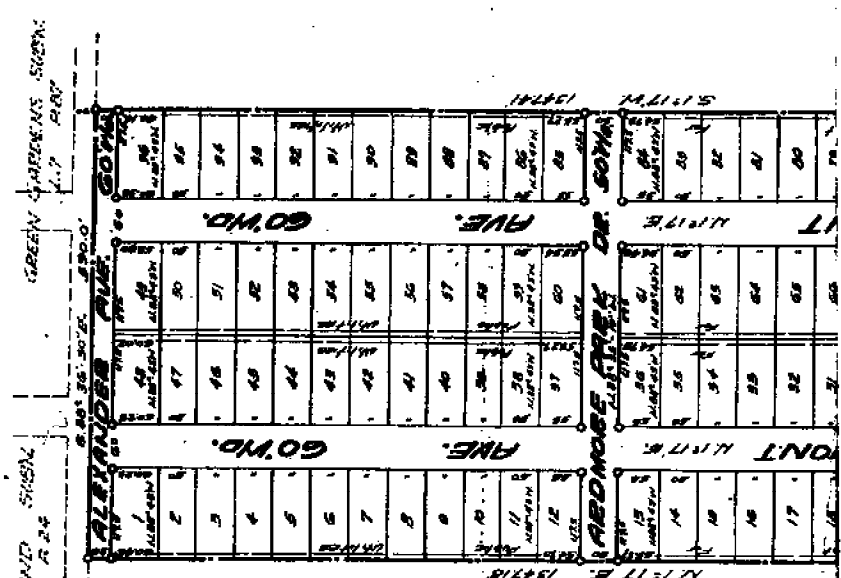
SIGNED AND SEALED IN PRESENCE OF -

Donald N. Sweeney
 DONALD N. SWEENEY
 AYES N. SWEENEY

ACKNOWLEDGMENT

STATE OF MICHIGAN, SS
COUNTY OF WAYNE

ON THIS ... DAY OF ... 1952, BEFORE ME, A NOTARY PUBLIC IN AND FOR SAID COUNTY, PERSONALLY CAME THE ABOVE NAMED DONALD N. SWEENEY AND AYES N. SWEENEY, HIS WIFE, KNOWN TO ME TO BE THE PERSONS WHO EXECUTED THE ABOVE DEDICATION AND FORWARDED THE SAME TO BE THEIR FREE ACT AND DEED.



THEIR FREE ACT AND DEED.

NOTARY PUBLIC WAYNE COUNTY MICHIGAN

MUNICIPAL APPROVAL

THIS PLAT WAS APPROVED BY THE BOARD OF THE CITY OF ST. CLAIR SHORES, MICHIGAN, BEING HELD

HELEN E. SMITH (CLERK)

APPROVAL BY COUNTY BOARD

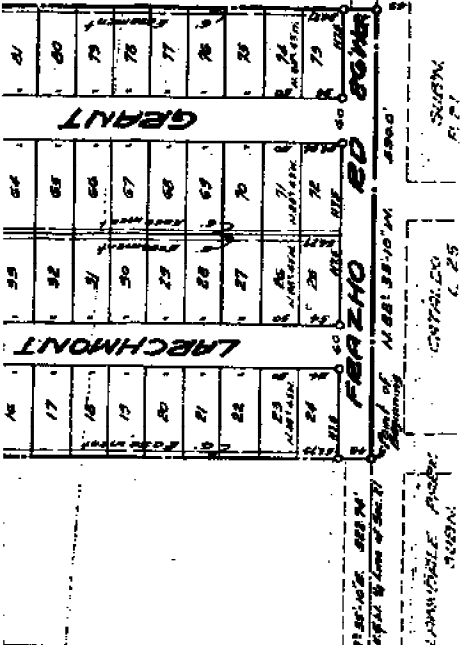
THIS PLAT WAS APPROVED ON THE 15th DAY OF 1952

AARON BURN (COUNTY REGISTER OF DEEDS)

ALBERT A. WAGNER (COUNTY CLERK)

LYNN WALKER (COUNTY TREASURER)

FRANK E. LOEB (County Health Commissioner)



SURVEYORS CERTIFICATE

I HEREBY CERTIFY THAT THE PLAT HEREON DELINEATED IS A CORRECT ONE AND THAT PERMANENT METAL MONUMENTS CONSISTING OF BARS NOT LESS THAN ONE-HALF INCH IN DIAMETER AND 48 INCHES IN LENGTH ENCASED IN A CONCRETE CYLINDER AT LEAST 4 INCHES IN DIAMETER AND 48 INCHES IN DEPTH HAVE BEEN PLACED AT POINTS MARKED THUS (D) AS SHOWN AT ALL ANGLES IN THE BOUNDARIES OF THE LAND PLATTED, AT ALL THE INTERSECTIONS OF STREETS, AND AT THE INTERSECTIONS OF STREETS WITH THE BOUNDARIES OF THE PLAT AS SHOWN ON SAID PLAT.

Claude Postiff
CLAUDE POSTIFF, REGISTERED
LAND SURVEYOR.

DESCRIPTION OF LAND PLATTED

THE LAND EMBRACED IN THE ANNEXED PLAT OF DONALD N. BRENNY'S SUB'N. OF PART OF THE N.E. 1/4 OF SEC. 21, T.1 R.19 E., CITY OF ST. CLAIR SHORES, MACOMB CO., MICHIGAN BEING PART OF LOT 1 OF ABREBORS PLAT NO. 17, AS RECORDED IN LIBER 14-PAGE 49 OF PLATS, MACOMB COUNTY RECORDS, IS DESCRIBED AS FOLLOWS: BEGINNING AT A POINT ON THE EAST AND WEST 1/4 LINE OF SECTION 21, SAID POINT BEING 0. 89°-38'-10" E., 325.74 FEET FROM THE CENTER POST OF SAID SECTION 21; THENCE N. 7°-17' E., PARALLEL TO THE NORTH AND SOUTH 1/4 LINE OF SEC. 21, 1347.18 FEET; THENCE S. 88°-34'-50" E., 890.0 FEET; THENCE S. 7°-17' W., 1347.61 FEET TO THE EAST AND WEST 1/4 LINE OF SECTION 21; THENCE N. 89°-39'-10" W., ALONG THE EAST AND WEST 1/4 LINE OF SECTION 21, 590.0 FEET TO THE POINT OF BEGINNING.

REGISTERS OFFICE
County of Macomb
Received for Record this _____ day
of _____ A. D. 1952 at
_____ o'clock _____ M. and Recorded
in Liber _____ of _____
on Page _____ of _____
_____ Register

THIS IS A PRELIMINARY PLAT AND IS NOT FINAL UNLESS THE PROPERTY AND THE MONUMENTS ARE AND ARE NOT AS SHOWN TO DATE OF THIS INSTRUMENT. REQUIRED AS TO THIS PLAT, THE CITY OF ST. CLAIR SHORES, MICHIGAN, DOES NOT APPLY TO TAKE IT ANY PART IN PROCESS OF COLLECTION BY THE CITY OF ST. CLAIR SHORES, MICHIGAN COUNTY TREASURER. PL. R. 17-18-52

7-8

68
27

1952 J.H. MCMAHON

Legal Map 886440 Roseville, Mich. 1977 233 1230

ANDY'S GARDENS SUBDIVISION

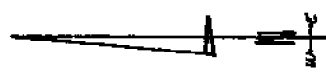
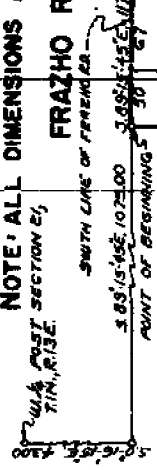
OF PART OF THE SW 1/4 SEC. 21, T. 1 N., R. 13 E.,
VILLAGE OF ROSEVILLE,
ERIN TOWNSHIP, MACOMB COUNTY, MICH.

109302

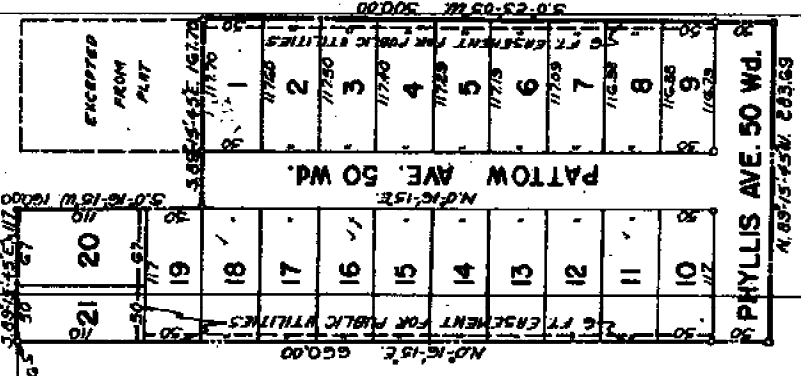


NOTE: ALL DIMENSIONS ARE SHOWN IN FEET AND DECIMALS THEREOF.

FRAZHO RD. 86 Wd.



STATEWIDE
SURVEY SERVICES
JAMES J. M'FARLAN
DETROIT, MICHIGAN



EXAMINED AND APPROVE.

Date MARCH 2, 1953

John B. Martin, Jr.
John B. Martin, Jr.
AUDITOR GENERAL
W. H. Mackay
Plat Engineer

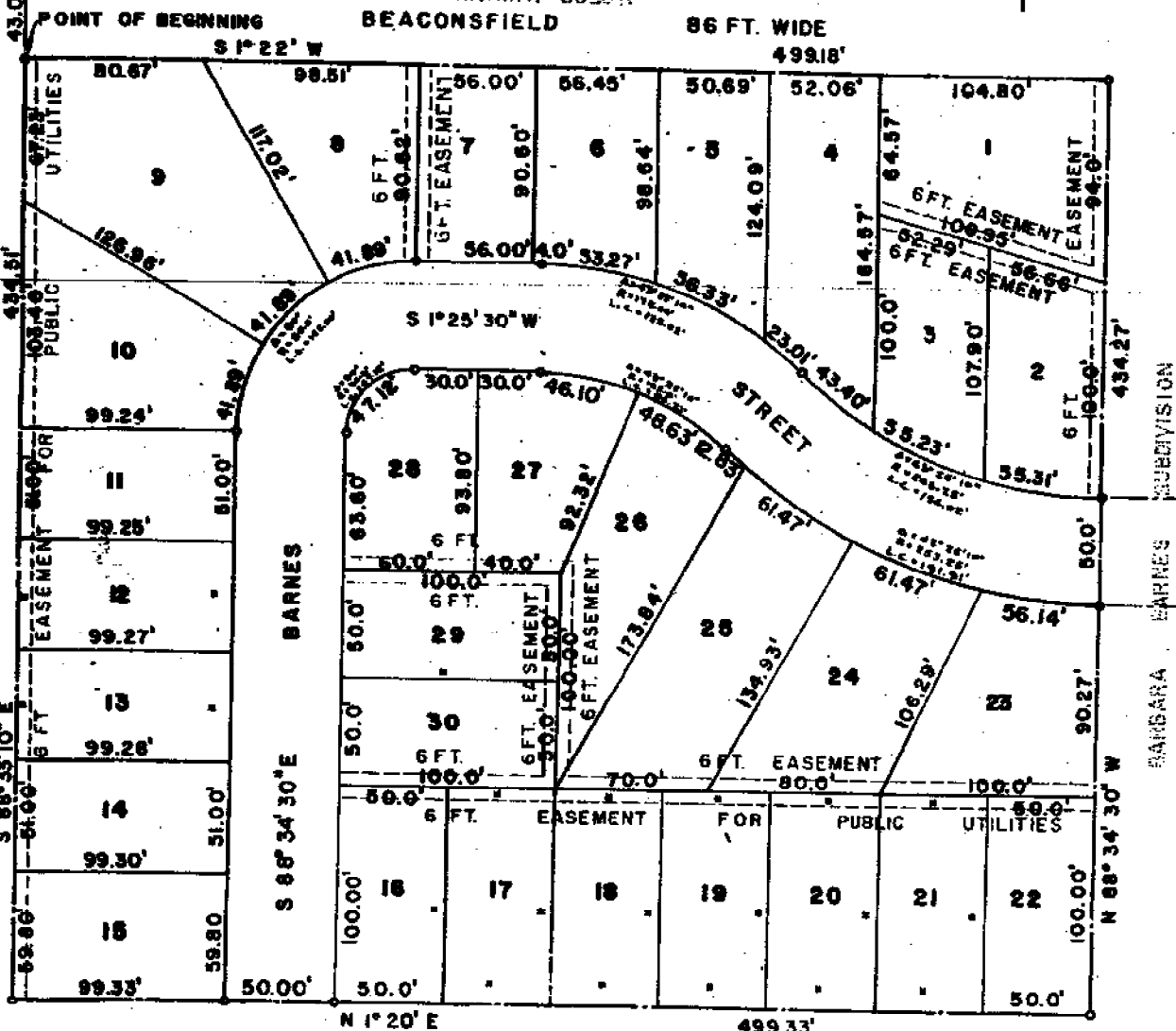
MARY K. BERNDT SUBDIVISION

OF PART OF THE N.W. 1/4 OF SECTION 21, T.12N., R.13E.,
VILLAGE OF ROSEVILLE, MACOMB COUNTY, MICHIGAN

NOTE:
ALL DIMENSIONS ARE IN FEET AND DECIMALS
THEREOF



H.L. ALLEN'S GRAND HIGHWAY SUBDIVISION



DESCRIPTION OF LAND PLATTED

The land embraced in the annexed plat of the MARY K BERNDT SUBDIVISION of part of the NW 1/4 of Sec. 21, T.12N., R.13E., Village of Roseville, Macomb Co., Michigan is described as follows:

Beginning on the N 1/4 post Section 21, T.12N., R.13E., S1° 22' W., 847.12 ft., thence N 88° 33' 10" W., 43.00 ft., to point of beginning; thence S 1° 22' W., 499.18 ft., thence N 88° 34' 30" W., 434.27 ft., thence N 1° 20' E., 499.33 ft., thence S 88° 33' 10" W., 434.51 ft. to point of beginning.

Being further described as a subdivision of the vacated portion of the H. L. Allen and Grand Highway Subdivision a part of the North 1/2, Section 21, T.12N., R.13E. in Erin and Lake Townships, Macomb County Michigan. Described as follows; Lots 177 thru 197 incl., 254 thru 258 incl., 260 thru 279 incl. and Southerly 1/2 of Lot 259.

SURVEYOR'S CERTIFICATE

I hereby certify that the plat herein delineated is a correct one, and that permanent monuments consisting of iron rods at least one half inch in diameter and 48 inches in length, cemented in concrete cylinders four inches in diameter and 48 inches in length, have been set at points marked (o) as shown above on all angles in the boundaries of the land platted, at all intersections of streets and at intersections of streets with the boundaries of the plat.

William Carter
Registered Land Surveyor

APPROVED FOR RECORD
of *Mary K. Berndt*
in Liber *1142*
on Page *47*

L 27
P 47

131374

NOV 4 1 42 PM '53

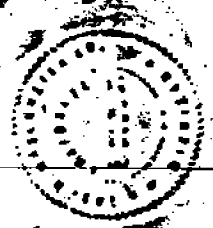
JB DIVISION
ION 21, T. 1N., R. 13E.
B CO., MICHIGAN.

DEDICATION

Know by all men by these presents, that, Charlotte E. Maschmeyer, a married woman, and Troy W. Maschmeyer Co., a Michigan Corporation, by Carl A. Berndt, Vice President, and Mary K. Berndt, Corporation Secretary, as proprietors, have caused the land embraced in the annexed plat to be surveyed, laid out and platted to be known as the Mary K. Berndt Subdivision, of part of the N.W. 1/4 of Section 21, T. 1N., R. 13E., Village of Roseville, Wascomb County Michigan and that the streets and alleys as shown on said plat are, hereby, dedicated to the use of the public.

Signed and sealed in the presence of:
Leland V. Maschmeyer
Leland V. Maschmeyer
Margaret LaFoy
Margaret LaFoy

Charlotte E. Maschmeyer
Charlotte E. Maschmeyer



Signed and sealed in the presence of:
Leland V. Maschmeyer
Leland V. Maschmeyer
Frederick B. Stamm
Frederick B. Stamm

TROY W. MASCHMEYER CO.
Carl A. Berndt
Carl A. Berndt Vice-President
Mary K. Berndt
Mary K. Berndt Corporation Secretary

ACKNOWLEDGMENT

ACKNOWLEDGMENT

State of Michigan
County of Wascomb
On this 27th day of February, 1953
before me, a Notary Public in and for said County, personally appeared the above named Leland V. Maschmeyer and Margaret LaFoy known to me to be the persons who executed the above dedication, and acknowledged the same to be their free act and deed.
Margaret LaFoy
Margaret LaFoy
Notary Public, Wascomb County
My Commission expires Feb. 28, 1954

State of Michigan
County of Wascomb
On this 27th day of February, 1953
before me, Margaret LaFoy, a Notary Public in and for said county, appeared Leland V. Maschmeyer and Troy W. Maschmeyer Co. to me personally known, who being each by me duly sworn did say that they are the Vice-President and Secretary, respectively, of the Troy W. Maschmeyer Co. a Michigan Corporation, and that the seal affixed to said instrument is the corporate seal of corporation and that said instrument was signed and sealed in behalf of said corporation by authority of its Board of Directors and the said Carl A. Berndt and Mary K. Berndt acknowledged said instrument to be the free act and deed of said corporation.
Margaret LaFoy
Margaret LaFoy
Notary Public, Wascomb County
My Commission expires Feb. 28, 1954

CERTIFICATE OF APPROVAL BY COUNTY BOARD
This plat was approved on the 27th day of February, 1953, by the Wascomb County Plat Board.
Aaron Burr
Aaron Burr
Register of Deeds
Albert Wagner
Albert Wagner
County Clerk
Lynn Whalen
Lynn Whalen
County Treasurer
Frank E. Lohr
Frank E. Lohr
Drain Commissioner

CERTIFICATE OF MUNICIPAL APPROVAL
This plat was approved by the Wascomb of the Wascomb at a meeting held February 27, 1953
Robert J. Farn
Robert J. Farn
Clerk
THIS IS TO CERTIFY THAT ALL FEES TO THE COUNTY TREASURER'S OFFICE THERE ARE NO TAXES ON THIS PROPERTY AND THAT TAXES ARE PAID FOR FIVE YEARS PREVIOUS TO DATE OF THIS INSTRUMENT.
CERTIFIED AS TO the within on 1776 DATE 2-27-53
THIS CERTIFICATE DOES NOT APPLY TO THESE, IF ANY, FEES OR FINES OF COLLECTION BY TOWNSHIP, CITY OR VILLAGE COLLECTING OFFICERS.
Lynn Whalen, COUNTY TREASURER, FOR Wascomb
and of 1776 197 1546458 272727
204 9 204 260 6277

1953
L
CAVOR

FE-08

arch
27
State

Drain Commissioner

F8

1953 W.J. Lehner No. 123

135313

ORIGINAL

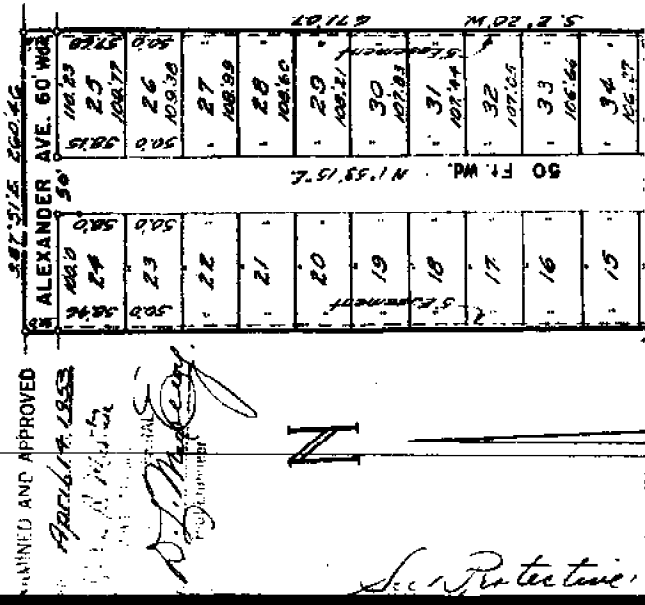
REGISTERED

ALEXANDER HEIGHTS SUB
 PART OF LOT 1, OF AB NO. 17, OF PART OF
 THE SW 1/4 OF THE NW 1/4 OF SEC. 21, T19R3E
 CITY OF ST. CLAIR SHORES
 MACOMB CO., MICHIGAN

WALTER J. LEHNER & SONS
 CIVIL ENGINEERING & SURVEYING
 MT. CLEMENS, MICHIGAN



NOTE: All dimensions shown are given in feet and decimals thereof.



REGISTER'S OFFICE
 County of Macomb

Received for Record this 15th day of March A.D. 1953 of 810 words & not receipts in Liber 28 of Plat 11 on Page 11 of 11
Walter J. Lehner & Sons

DEDICATION

KNOW ALL MEN BY THESE PRESENTS, That we, Joseph S. Dressner and Vera C. Dressner, his wife, and Jack Rosenberg and Charlotte G. Rosenberg, his wife, and Margaret S. Deratany, a widow, as proprietors, have caused the land embraced in the annexed plat to be surveyed, laid out and platted, to be known as "Alexander Heights Sub," part of Lot 1, of A. P. No. 17, of part of the S. W. 1/4 of the N. E. 1/4 of Sec. 21, T. 1 N., R. 13 E., City of St. Clair Shores, Macomb Co., Michigan, and that the interests as shown on said plat are hereby dedicated to the use of the public.

Joseph S. Dressner (L.S.)
Vera C. Dressner (L.S.)

Jack Rosenberg (L.S.)
Charlotte G. Rosenberg (L.S.)
Margaret S. Deratany (L.S.)

Signed and sealed in Presence of:

Lila Chapman
Ray J. ...

ACKNOWLEDGEMENT

STATE OF MICHIGAN) SS.
 COUNTY OF MACOMB)

On this 15th day of March, 1953, before me, a Notary Public in and for said county, personally came the above named, Joseph S. Dressner and Vera C. Dressner, his wife, and Jack Rosenberg and Charlotte G. Rosenberg, his wife, and Margaret S. Deratany, a widow, known to me to be the persons who executed the above dedication and

STATE OF MICHIGAN) SS.
COUNTY OF Wayne)

On this 19th day of March, 1953, before me, a Notary Public in and for said county, personally came the above named, Joseph S. Dremer and Vera C. Dremer, his wife, and Jack Rosenberg and Charlotte C. Rosenberg, his wife, and Margaret S. Deratany, a widow, known to me to be the persons who executed the above dedication and acknowledged the same to be their free act and deed.

My Commission expires: 11-4-53

Notary Public in and for Wayne Co., Mich.

DESCRIPTION OF LAND PLATTED

The land embraced in the annexed plat of "Alexander Heights Sub." part of Lot 1, of A. X. No. 17, of part of the S. W. 1/4 of the N. E. 1/4 of Sec. 21, T. 1 N., R. 13 E., City of St. Clair Shores, Macomb County, Michigan, is described as follows: Commencing at a point 1497.00 feet N. 87°-53'-30" W. of the East Quarter Post of said section 21, and thence extending N. 87°-53'-30" W. 235.66 feet; thence N. 1°-53'-19" E. 1347.97 feet; thence S. 87°-53'-19" E. 260.46 feet; thence S 2°-29' W. 671.07 feet; thence S. 1°-51'-10" W. 676.31 feet to the point of beginning.

SURVEYOR'S CERTIFICATE

I hereby certify that the plat hereon delineated is a correct one and that the permanent metal monuments consisting of bars not less than one-half inch in diameter and 48 inches in length encased in a concrete cylinder at least 4 inches in diameter and 48 inches in depth have been placed at points marked thus (O) as thereon shown at all angles in the boundaries of the land platted, at all the intersections of the lines of streets, and at the intersections of the lines of streets with the boundaries of the plat as shown on said plat.

Walter J. Lubner,
Registered Land Surveyor,
No. 123.

CERTIFICATE OF APPROVAL BY COUNTY BOARD

This plat was approved on the 9th day of April, 1953 by the Macomb County Plat Board.

Aaron Burr-Register of Deeds
Frank E. Lohr-County Clerk
Frank E. Lohr-County Board Commissioner

Albert A. Wagner-County Clerk
James H. Lohr-County Treasurer

16	15	14	13	12	11	10	9	8	7	6	5	4	3	2	1
105.66	105.27	105.88	105.49	105.10	104.71	104.32	103.93	103.54	103.15	102.76	102.37	101.98	101.59	101.20	100.81
33	34	35	36	37	38	39	40	41	42	43	44	45	46	47	48
105.66	105.27	105.88	105.49	105.10	104.71	104.32	103.93	103.54	103.15	102.76	102.37	101.98	101.59	101.20	100.81
ARDMORE PARK DR.															
URSULINE AVENUE															
FRAZHO ROAD															

CERTIFICATE OF MUNICIPAL APPROVAL

This plat was approved by the Common Council of the City of St. Clair Shores at a meeting held April 7, 1953.

Donald J. Harin
City Clerk.

THIS IS TO CERTIFY THAT ACCORDING TO THE COUNTY RECORDERS RECORDS THERE ARE NO LINES ON THIS PLAT AND THAT THESE ARE FOR FIVE YEARS PREVIOUS TO DATE OF THIS INSTRUMENT. THE CERTIFICATE DOES NOT APPLY TO TAXES, IF ANY, NOW IN PROCESS OF COLLECTION BY THE COUNTY CLERK'S OFFICE.

W. J. Blisk
James H. Lohr

1955

F. J. BRIDGES

5779

219948

" BARRINGTON COURTS SUBDIVISION "
 PARTS OF LOTS 8 THRU 23 OF A.P. NO. 46 YUDELS HOME
 AND GARDEN SUB. AND PART OF LOTS NO. 4 AND NO. 5
 OF ASSESSORS PLAT NO. 17 PART OF E 1/2 OF SEC. 21 T. 1 N., R. 13 E.
 CITY OF ST. CLAIR SHORES, MACOMB CO., MICHIGAN.

NOTE: All dimensions are in feet
 and decimals thereof.
 All curvilinear dimensions
 are shown as arc lengths.

Victor Targemah
 Victor Targemah,
 AUDITOR GENERAL
 Plat Engineer



Walter J. Lehner & Sons
 Civil Engineers & Surveyors
 Mt. Clemens, Michigan.

DEDICATION
 KNOW ALL MEN BY THESE PRESENTS, That we, Abraham Metzger and Beckie Metzger, his wife, and Angelina Gulino, a widow, as proprietors, have caused the land embraced in the annexed plat to be surveyed, laid out and platted to be known as "Barrington Courts Subdivision" Parts of Lots 8 thru 23 of A. P. No. 46 Yudels Home and Garden Sub. and Part of Lots No. 4 and No. 5 of Assessors Plat No. 17 Part of E. 1/2 of Sec. 21, T. 1 N., R. 13 E., City of St. Clair Shores, Macomb Co., Michigan., and that the streets as shown on said plat are hereby dedicated to the use of the public, and that the private easements shown on said plat are hereby reserved for the use of the Public Utilities, or for the use of specific utilities as hereon noted, subject to the regulation and control of the use thereof by the local governmental authorities, and that no permanent structures are to be erected within the lines of said easements.

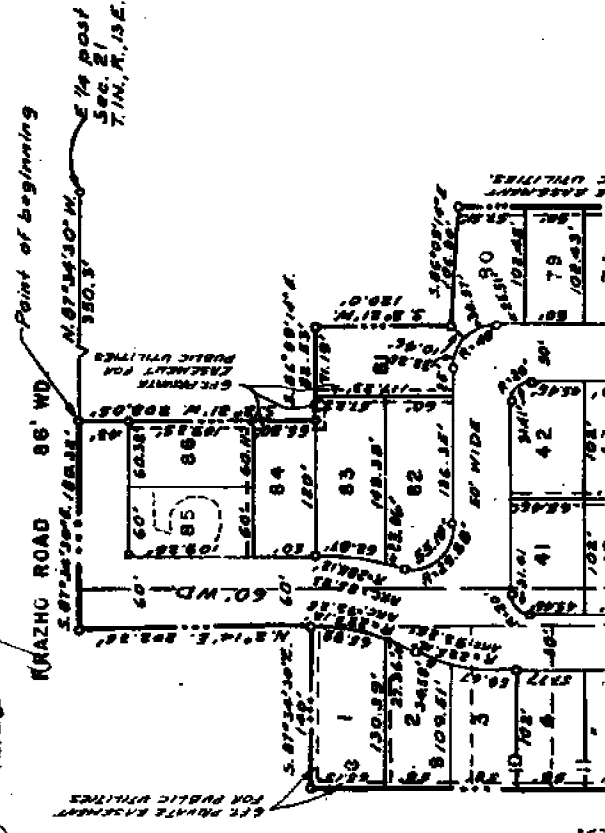
Abraham Metzger
 Abraham Metzger (L.S.)
Beckie Metzger
 Beckie Metzger (L.S.)
Angelina Gulino
 Angelina Gulino (L.S.)

Signed and Sealed in the Presence of:
Warren Macomb
 WARREN MACOMB
Douglas Taylor
 DOUGLAS TAYLOR

STATE OF MICHIGAN)
 COUNTY OF) SS.

On this 10th day of February, 1955, before me, a Notary Public in and for said county, personally came the above named Abraham Metzger and Beckie Metzger, his wife, and Angelina Gulino, a widow, known to me to be the persons who executed the above dedication, and acknowledged the same to be their free act and deed.

My Commission expires:
August 2, 1956
 Notary Public, Macomb County, Mich.



*See Restrictions - Lib 902 and 903
 See Addition to Restrictions - Lib 11*

DESCRIPTION OF LAND PLATTED

My Commission expires: August 7, 1955

Notary Public, Macomb County, Mich.

DESCRIPTION OF LAND PLATTED
 The land embraced in the annexed plat of "Barrington Courts Subdivision" Parts of Lots 8 thru 23 of A. P. No. 46 Yudel's Home and Garden Sub. and Part of Lots No. 4 and No. 5 of Assessors Plat No. 17 Part of E. 1/2 of Sec. 21, T. 1 N., R. 13 E., City of St. Clair Shores, Macomb Co., Michigan, is described as follows: Commencing at a point 350.3 feet N. 87°-34'-30"W. at the East Quarter Post of said Section 21; thence extending S. 2°-21'W. 208.05 feet, thence S. 86°-09'-14"E. 82.53 feet, thence S. 2°-21'W. 120.0 feet; thence S. 86°-09'-14"E. 106.30 feet, thence S. 2°-17'W. 1037.51 feet, thence N. 87°-42'-30"W. 507.65 feet, thence N. 2°-14'E. 1169.15 feet, thence S. 87°-34'-30"E. 140.0 feet, thence N. 2°-14'E. 102.25 feet, thence S. 87°-34'-30"E. 180.32 feet to the point of beginning.

CERTIFICATE OF MUNICIPAL APPROVAL
 This plat was approved by the City Council of the City of St. Clair Shores at a meeting held 2-7-55
 Donald S. Harry, Clerk

SURVEYORS CERTIFICATE
 I hereby certify that the plat hereon delineated is a correct one and that permanent metal monuments consisting of bars not less than one-half inch in diameter and 36 inches in length, encased in a concrete cylinder at least 4 inches in diameter and 36 inches in depth have been placed at points marked thus (O) as thereon shown at all angles in the boundaries of the land platted, at all the intersections of the lines of streets, and at the intersections of the lines of streets with the boundaries of the plat as shown on said plat.

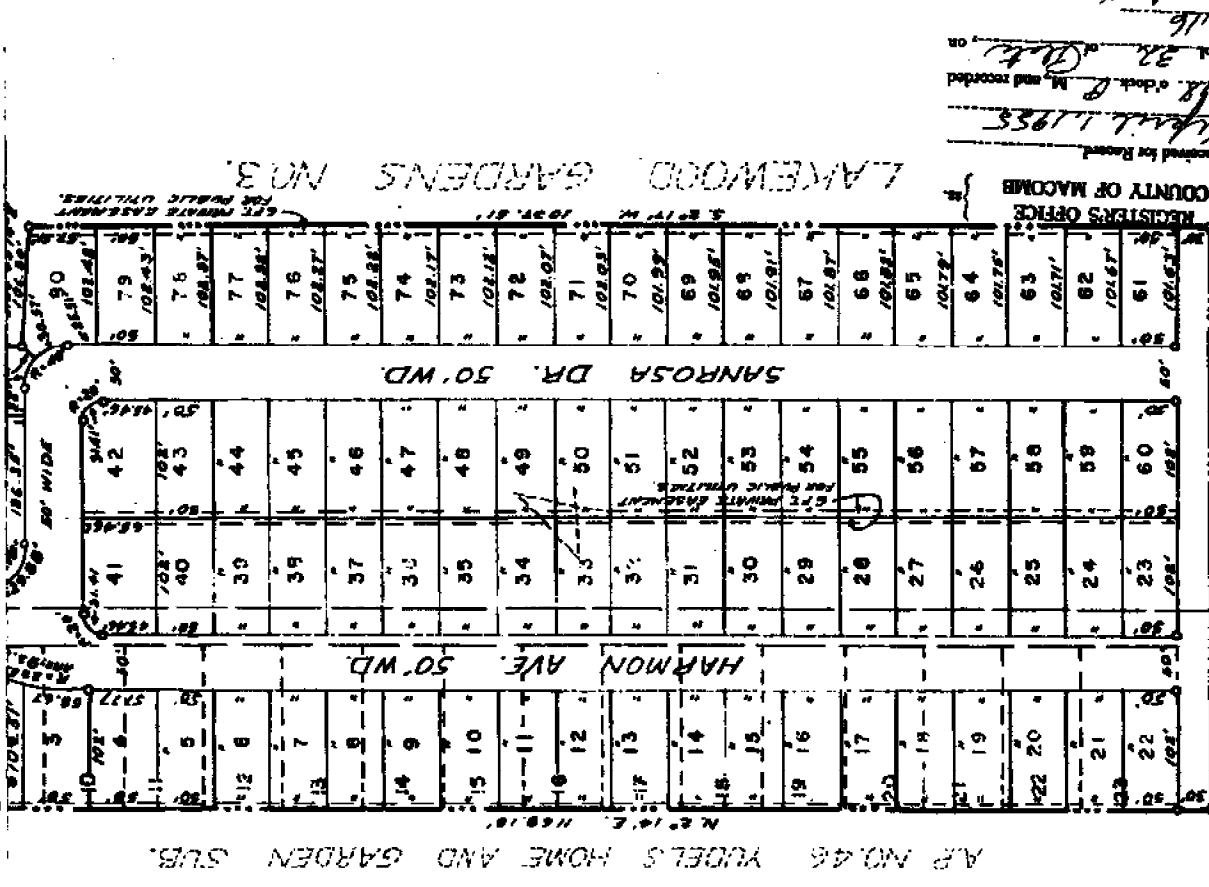
Frank J. Bradley
 Registered Land Surveyor
 No. 5795779

CERTIFICATE OF APPROVAL BY COUNTY BOARD
 This plat was approved on the 21 day of March, 1955, by the Macomb County Plat Board.

Alfred A. Wagner - County Clerk
 Frank E. Lohr - Drain Commissioner

Approved By
 City of St. Clair Shores

at St. Clair Shores, Michigan, this 21st day of March, 1955.



CERTIFICATE OF MUNICIPAL APPROVAL
 THIS PLAT WAS APPROVED BY THE CITY COUNCIL OF THE CITY OF ST. CLAIR SHORES AT A MEETING HELD ON FEB. 7, 1955 AND THE WIDTH OF THE LOTS IS IN COMPLIANCE WITH REQUIREMENTS OF SECTION 80 ACT 172 OF 1939 AS AMENDED. SEWER AND WATER INSTALLED AND APPROVED.

at St. Clair Shores, Michigan, this 7th day of February, 1955.

at St. Clair Shores, Michigan, this 7th day of February, 1955.

916 Realty page 102
 995 Realty page 102

F-8

1955 W. J. LEHNER No. 123

ALEXANDER HEIGHTS SUB NO. 1

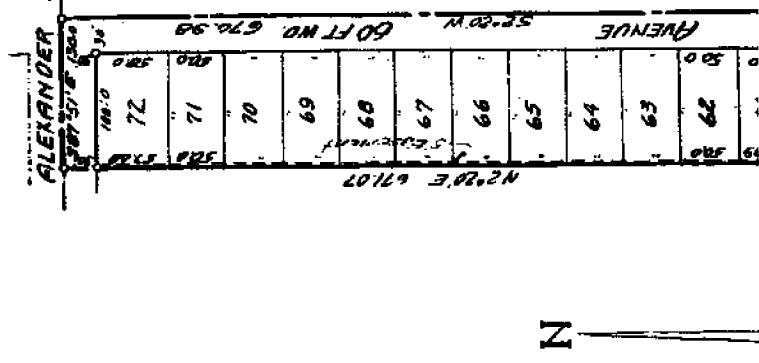
PART OF LOT 1, OF AP. NO. 17, OF PART OF
THE SW 1/4 OF THE NE 1/4 OF SEC. 21, T19R13E
CITY OF ST. CLAIR SHORES
MACOMB CO, MICHIGAN



WALTER J. LEHNER & SONS
CIVIL ENGINEERING & SURVEYING
MT. CLEMENS, MICHIGAN

EXAMINED AND APPROVED
Date JUN 10 1955

Victor Targowski
Victor Targowski,
AUDITOR GENERAL
Plat Engineer



DEDICATION

KNOW ALL MEN BY THESE PRESENTS, That we, Joseph S. Dressner, and Vera C. Dressner, his wife, and Jack Rosenberg and Charlotte C. Rosenberg, his wife, and Margaret S. Deratsny, a widow, as proprietors, have caused the land embraced in the annexed plat to be surveyed, laid out and platted, to be known as "Alexander Heights Sub No. 1", part of Lot 1, of A. P. No. 17, part of the S.W. 1/4 of the N.E. 1/4 of Sec. 21, T. 19 N., R. 13 E., City of St. Clair Shores, Macomb Co., Michigan, and that the same as shown on said plat are hereby dedicated to the use of the public as private easements across said plat and hereby accepted by the public authorities of this county, to wit: the Board of Commissioners and Council of the City of St. Clair Shores, Michigan, and the Board of Commissioners and Council of the County of Macomb, Michigan, as shown on the plat hereunto annexed and on file in the office of the Auditor General of this State.

Joseph S. Dressner (L.S.)
Charlotte C. Rosenberg (L.S.)
Margaret S. Deratsny (L.S.)

Signed and Sealed in Presence of:

Lyle Chapman
Roy W. ...

Vera C. Dressner (L.S.)

Joseph S. Dressner (L.S.)
Charlotte C. Rosenberg (L.S.)

ACKNOWLEDGEMENT

STATE OF MICHIGAN) SS.
COUNTY OF MACOMB)

On this 10th day of JUNE, 1955, before me, a Notary Public in and for said county, personally came the above named, Joseph S. Dressner, his wife, and Jack Rosenberg and Charlotte C. Rosenberg, his wife, and Margaret S. Deratsny, a widow, known to me to be the persons who executed the above dedication and acknowledged the same to be their free act and deed.

My Commission expires: June 10, 1955

2331731

above named, Joseph S. Dresser, his wife, and Jack Rosenberg and Charlotte G. Rosenberg, his wife, and Margaret S. Derahm, a widow, known to me to be the persons who executed the above dedication and acknowledged the same to be their free act and deed.

My Commission expires: 11-4-55

Notary Public in and for Wayne Co., Mich.

DESCRIPTION OF LAND PLATTED

The land embraced in the annexed plat of "Alexander Heights Sub. No. 1" part of Lot 1, of A.P. No. 17, of part of the S. W. 1/4 of the N. E. 1/4 of Sec. 21, T. 1 N., R. 13 E., City of St. Clair Shores, Macomb County, Michigan, is described as follows: Commencing at a point 1367.0 feet N. 87°-53'-30" W. of the East Quarter Post of said Section 21, and thence extending N. 87°-53'-30" W. 130.0 feet; thence N. 1°-51'-10" E. 676.31 feet; thence N. 2°-20' E. 671.07 feet; thence S. 87°-51' E. 130.0 feet; thence S. 2°-20' W. 670.98 feet; thence S. 1°-51'-10" W. 676.31 feet to the point of beginning.

SURVEYORS CERTIFICATE

I hereby certify that the plat hereon delineated is a correct one and that permanent metal monuments consisting of bars not less than one-half inch in diameter and 48 inches in length encased in a concrete cylinder at least 4 inches in diameter and 48 inches in depth have been placed at points marked thus (O) as thereon shown at all angles in the boundaries of the land platted, at all the intersections of the lines of streets, and at the intersections of the lines of streets with the boundaries of the plat as shown on said plat.

Walter J. Lehner
Registered Land Surveyor,
No. 123.

CERTIFICATE OF MUNICIPAL APPROVAL

This plat was approved by the Common Council of the City of St. Clair Shores, at a meeting held May 2, 1955

Donald J. Harten
City Clerk.

CERTIFICATE OF APPROVAL BY COUNTY BOARD

This plat was approved on the 9th day of June, 1955 by the Macomb County Plat Board.

Albert A. Wagner
County Clerk
John J. ...
Macomb County Treasurer

Alton Burr Register of Deeds
Frank E. Lohr Drain Commissioner

REGISTERS OFFICE
COUNTY OF MACOMB

Received for Record

June 18, 1955
in Vol. 22 of Plats, on
Page 44

Angela Maygelle
Register of Deeds

LIBRARY CERTIFY THAT THE PUBLIC SEWERAGE AND WATER FACILITIES ARE INSTALLED AND READY FOR CONNECTION WITHIN THE PLAT AND THAT SAID FACILITIES WERE APPROVED AND ACCEPTED.

May 26, 1955
Donald Marm
CITY CLERK
CITY OF ST. CLAIR SHORES

THIS IS TO CERTIFY THAT IN ACCORDANCE TO THE COUNTY RESOLUTIONS IN FORCE THEREIN AND AS THE SAME ARE THE PROPERTY AND THAT SAME ARE FOR THE YEAR PREVIOUS TO DATE OF THIS INSTRUMENT, RETURNED TO THE REGISTER OF DEEDS OF THE COUNTY OF MACOMB, MICHIGAN, ON June 18, 1955 AT 11:13 A.M. AND RECORDED IN Vol. 22 of Plats, on Page 44.

