

Part B: Surveyor's Report on Perpetuation, Restoration, Reestablishment or Monumentation of Corner:

Refer to: 12-15-2005 LCRC for Remonumentation Corner by Robert H. Birkett, PS #41094, F06 recorded in L. 17433 of Deeds on P. 759. Set an aluminum cap stamped "MACOMB COUNTY MONUMENT, MI ACT 345, 41094, F06" in centerline of Martin Road (east-west) with 5 accessories.

Part C: Field Evidence of Perpetuation or Monumentation of Corner:

3-15-2017 Found a aluminum cap stamped "MACOMB COUNTY MONUMENT, MI ACT 345, 41094, F06" centerline of Martin Road (east-west) with 5 of 5 matching accessories from the LCRC listed in Part A Occupied corner with GPS to obtain Geodetic Coordinate Data.

Accessories:

- AZ. 0° 14.47' (R&M) South face concrete walk
- AZ. 85° 168.22' (R&M) Center top nut hydrant
- AZ. 90° 107.25' (R&M) East end of concrete bridge deck
- AZ. 180° 13.73' (R&M) North face concrete walk
- AZ. 270° 106.95' (R&M) West end of concrete bridge deck

Date of Observation	Latitude	Longitude	Datum and Adjustment Year	Epoch Date
15-Mar-17	N 42D30'09.51112"	W 82D55'04.71653"	NAD83 (2011)	2010.0000

Method for Latitude-Longitude determination: NGS OPUS-RS Solution

State Plane Coordinates in international feet: N-368750.93', E-13513981.41'
 Standard Deviation: 0.03'N, 0.03'W
 Zone: South
 Combined Factor: 0.99990602
 NGSPID: AB5950
 Survey Method: MC GPS
 Orthometric Height: 594.74'
 Elev. Datum: NAVD88

I, Steven E. Dunn, P.S., in a field survey on March 15, 2017, certify under the requirements of the State Survey and Remonumentation Act, 1990 PA 345, MCL 54.261 to 54.279, and the Corner Recordation Act, 1970 PA 74, MCL 54.201 to 54.210d, that the corner identified and described hereon has been perpetuated or monumented as described in Parts A, B, and C above, pursuant to the laws and rules of the State of Michigan.

Steven E. Dunn May 15, 2017
 Steven E. Dunn, P.S. Date

Professional Surveyor's License No.: 28408

Prepared By:
 Steven E. Dunn, PS
 Great Lakes Geomatics, LLC
 12504 Stephens
 Warren, MI 48089



I, Martin C. Dunn, P.S., Macomb County Surveyor Representative, have reviewed the corner perpetuated in parts A, B and C above for the purpose of publishing its Michigan State Plane Coordinate values and relative data and is accepted for filing in the Macomb County Remonumentation Program.

Martin C. Dunn 6-8-2017
 Martin C. Dunn, P.S. Date

Macomb County Surveyor Representative
 License No. 30081

LAND CORNER RECORDATION CERTIFICATE
Filing Requirement of Act 74, Mich. P.A. 1970

For corners in

Macomb Located in: Corner Code #
 (County) City of Roseville and St. Clair Shores

1. Public Land Survey T 1N R 13E F-6
 T ___ R ___
 T ___ R ___
 T ___ R ___


2. Property Controlling S ___ T ___ R ___
 in Section S ___ T ___ R ___

3. Miscellaneous S ___ T ___ R ___
 Property in Sec. S ___ T ___ R ___

4. Lot No. _____, Recorded Plat

5. Private Claims

5226799
 LIBER 17433 PAGE 759



12/15/2005 12:26:47 P.M.
 MACOMB COUNTY, MI SEAL
 CARMELLA SABAUGH, REGISTER OF DEEDS

Register of Deeds Stamp & File Number

	A	B	C	D	E	F	G	H	I	J	K	L	M
2	6		5		4		3		2		1		
3													
4	7		6		9		10		11		12		
5													
6	18		17		16		15		14		13		
7													
8	19		20		21		22		23		24		
9													
10	30		29		28		27		26		25		
11													
12	31		32		33		34		35		36		
13													

I, Robert H. Birkett, in a field survey on, August 23, 2005 do hereby state that under requirements of P.A. 74, Michigan P.A. of 1970, the corner points mentioned in lines 1 and 2 above were in conformance with regulations and rules therefore as required in the current manual of survey instructions of the United States Department of the Interior, Bureau of Land Management or by a decree of a Court of Law and for that the corner points mentioned in lines 3, 4 and 5 above were in conformance with the rules of the Michigan Board of Land Surveyors or by a Decree of a Court of Law; established, re-established, monumented, re-monumented, recovered, found as expressed below:

NOTE: Not more than 2 corners, all in the same town and range, may be recorded on this certificate.

A. Description of original monument and accessories and/or subsequent restoration:

- F-6 Center of section 16.
- a. 1923, W. J. Lehner No. 123, "Stoepel's Martain Subdivision", L006 P028 M.C.R.
 - b. 1924, W. J. Lehner No. 123, "Stoepel's Martain Road Sub No. 1", L006 P070 M.C.R.
 - c. 1924, W. J. Lehner No. 123, "Roseville Gardens Subdivision", L007 P050 M.C.R.
 - d. 1924, H. R. O'Mara (C.E.), "Green Garden Subdivision", L007 P087 M.C.R.
 - e. 1924, H.R. O'Mara (C.E.), "Green Garden Subdivision No. 1", L007 P088 M.C.R.
 - f. 1924, W. J. Lehner No. 123, "Mack Avenue Half Acres", L008 P031 M.C.R.
 - g. 1924, H. R. O'Mara (C.E.), "Green Garden Subdivision No. 2", L008 P065 M.C.R.
 - h. 1925, H. R. O'Mara (C.E.), "Green garden Subdivision No. 4", L008 P096
 - i. 1925, W. J. Lehner No. 123, "Kaufmann Subdivision", L009 P081 M.C.R.
 - j. 1926, H. R. O'Mara (C.E.), "Christensen and Schram Subdivision", L011 P036 M.C.R.
 - k. 1926, H. R. O'Mara (C.E.), "Biebers Subdivision", L012 P007 M.C.R.
 - l. 1930, W. J. Lehner No. 123, "Assessor's Plat No. 24", L015 P006 M.C.R.
 - m. 1940, W. J. Lehner No. 123, "Assessor's Plat of Schollenberger Sub.", L020 P007 M.C.R.



B. Description of corner evidence found and/or method applied in restoring or reestablishing corner:

F-6 Set corner on the centerline of Martin Road on a bridge deck over I-94 using the above referenced documents (d), (e), (g) and (h) in above section "A".

Field Measurements Between Corners

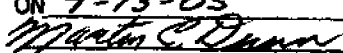
F-6 to F-5 - 2693.02'	Record distance east - 2693.50'	
F-6 to G-6 - 2695.39'	Record distance north - 2694.77'	Record distance south - 2696.07'
F-6 to F-7 - 2695.93'	Record distance east - 2798.31'	
F-6 to E-6 - 2711.74'	Record distance north - 2692.54'	Record distance south - 2713.60'

C. Description of monument for corner and accessories established to perpetuate locating the position of the corner:

F-6 Set an aluminum cap on an existing bridge deck on the centerline of Martin Road, marked "Macomb County Monument, MI, ACT 345, 41094, F-6".

- Az. 0° - 14.47' - South face concrete walk.
- Az. 85° - 168.22' - Centerline top nut hydrant.
- Az. 90° - 107.25' - East end of concrete bridge deck.
- Az. 180° - 13.73' - North face concrete walk.
- Az. 270° - 106.95' - West end of concrete bridge deck.

The Selected location is accepted by me and is generally accepted by Professional Surveyors as the best available evidence of the position of the original corner.

ACCEPTED BY THE MACOMB COUNTY SURVEY PEER GROUP AS THE OFFICIAL CORNER UNDER MICHIGAN PUBLIC ACT 345 OF 1990 AT A MEETING HELD ON 9-13-05

 MARTIN C. DUNN, P.S. CHAIRMAN

Signed by 
 Surveyor's Michigan License No. 41094

Date November 18, 2005

**Report of Survey
F-6, Erin Township
Town 1 North, Range 13 East
Macomb County, Michigan**

Corner Information

Center of section 16.

Tax Descriptions

None

Plats

1923, W. J. Lehner No. 123, "Stoepel's Martain Subdivision", L006 P028 M.C.R.
1924, W. J. Lehner No. 123, "Stoepel's Martain Road Sub No. 1", L006 P070 M.C.R.
1924, W. J. Lehner No. 123, "Roseville Gardens Subdivision", L007 P050 M.C.R.
1924, H. R. O'Mara (C. E.), "Green Garden Subdivision", L007 P087 M.C.R.
1924, H.R. O'Mara (C.E.), "Greengarden Subdivision No. 1", L007 P088 M.C.R.
1924, W. J. Lehner No. 123, "Mack Avenue Half Acres", L008 P031 M.C.R.
1924, H. R. O'Mara (C.E.), "Green Garden Subdivision No. 2", L008 P065 M.C.R.
1925, H. R. O'Mara (C.E.), "Green garden Subdivision No. 4", L008 P096
1925, W. J. Lehner No. 123, "Kaufmann Subdivision", L009 P081 M.C.R.
1926, H. R. O'Mara (C.E.), "Christensen and Schram Subdivision", L011 P036 M.C.R.
1926, H. R. O'Mara (C.E.), "Biebers Subdivision", L012 P007 M.C.R.
1930, W. J. Lehner No. 123, "Assessor's Plat No. 24", L015 P006 M.C.R.
1940, W. J. Lehner No. 123, "Assessor's Plat of Schollenberger Sub.", L020 P007 M.C.R.

Recorded Surveys

None

Miscellaneous

Observations From F-6

Field Measurement to F-5 - 2693.02'
Record distance east side section line - 2693.50'
Record distance west side section line - Unknown

Field Measurement to G-6 - 2695.39'
Record distance north side section line - 2694.77'
Record distance south side section line - 2696.07'

Field Measurement to F-7 - 2695.93'
Record distance east side section line - 2798.31'
Record distance west side section line - Unknown

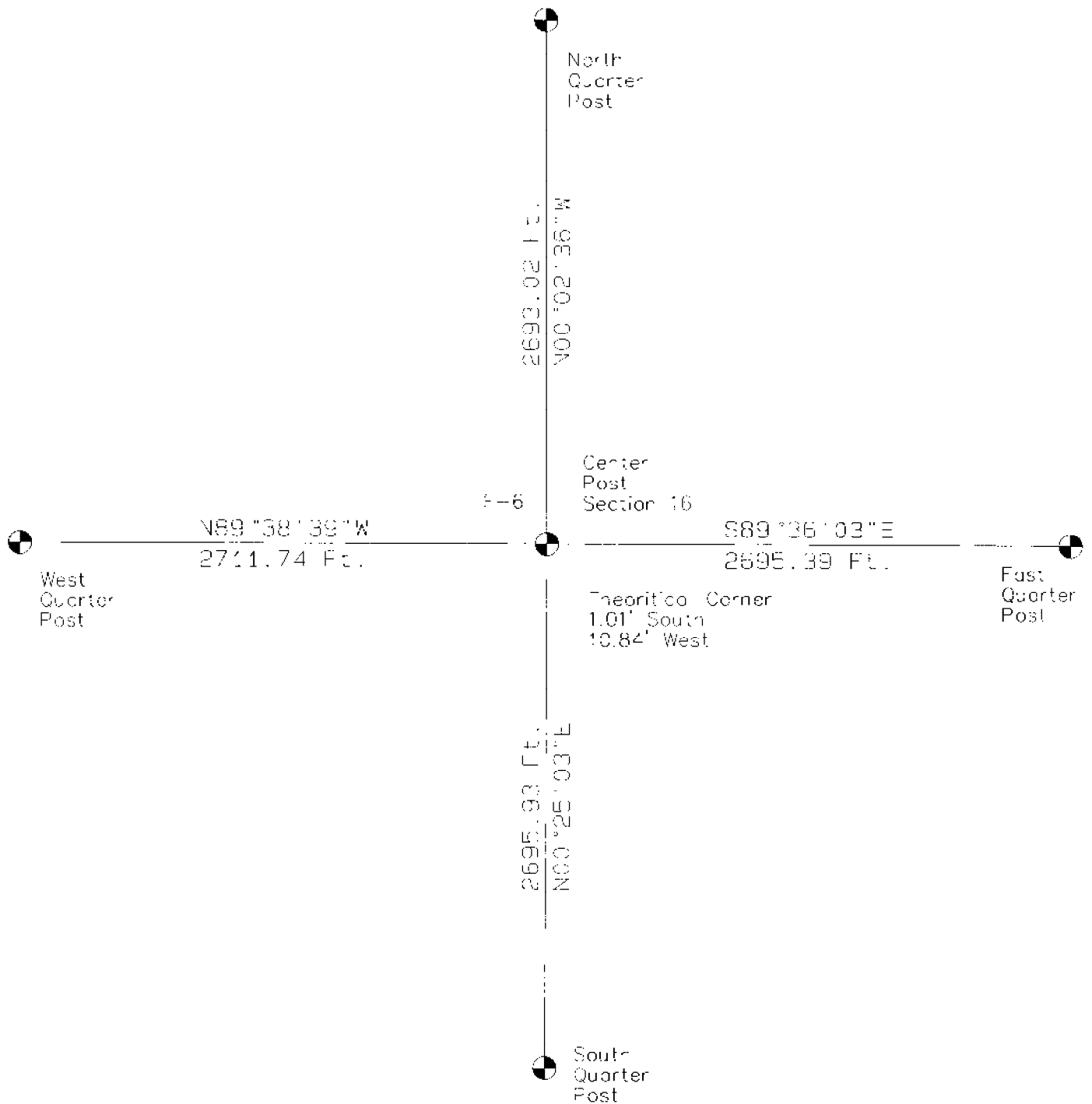
Field Measurement to E-6 - 2711.74'
Record distance north side section line - 2692.54'
Record distance south side section line - 2713.60'

Recommendation

The recommendation to the Peer Review Board is to accept the above position as the faithful perpetuation of the corner.


Robert H. Birkett, P.S.
Michigan No. 41094

Town of North
Range 13 East
City of Eastpointe and St. Clair Shores



223-026 2005 MACOMB REMON
 F-6
 T.M., R.13E. ERIN - EASTPOINTE

27

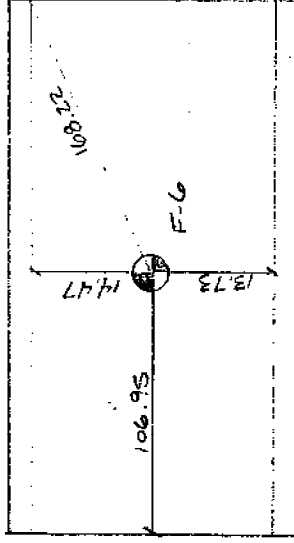
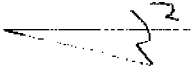
No 2449

SET REMON CAP ON 1/2" RE
 IN & JOINT
 .6" Sp. & BRIDGE LOCK

AZ	DIST	DESC
0°	14.47	S. FACE CURB FACE WALK
180°	13.73	N. FACE CURB FACE WALK
85°	148.22	& TOP INT HYDRANT
270°	106.95	(1) & CONC. BRIDGE DECK

194 83

161 89



13.73

F-6

148.22

106.95

14.47

[F-06]

W. J. LEHNER No. 123

P. 7
1940

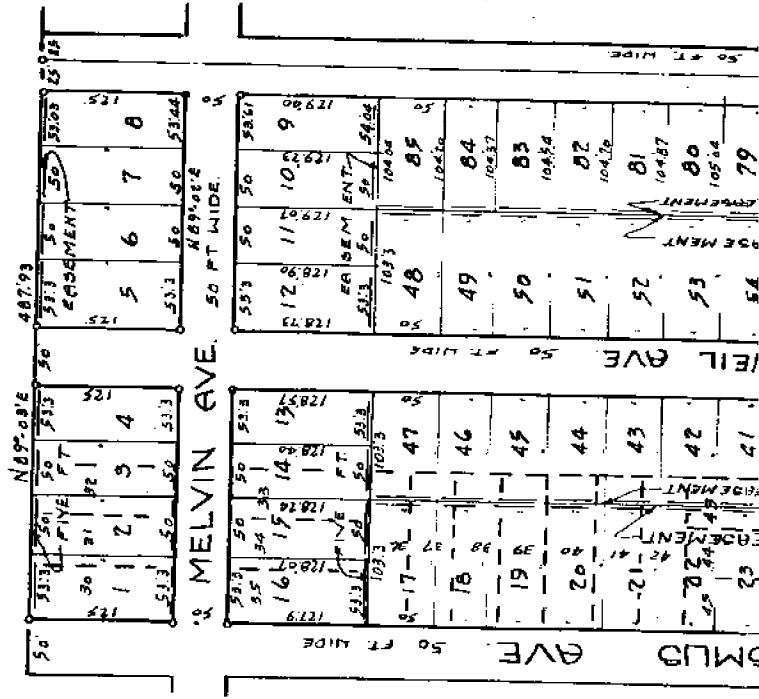
**'ASSESSOR'S PLAT OF
SCHOLLENBERGER SUB.
A REPLAT OF LOTS 30 TO 54 INC., OF
CHRISTENSEN & SCHRAM SUB. AND PART
OF S.E. 1/4 OF N.W. 1/4 OF SEC. 16 T. 1 N. R. 13 E.,
VILLAGE OF ROSEVILLE, MACOMB CO., MICH.**

10508

Note: All dimensions in feet
and decimals thereof.

WALTER J. LEHNER
MT. CLEMENS, MICH.

SCALE 1" = 100'
0 25 50 75 100



DEDICATION.
KNOW ALL MEN BY THESE PRESENTS, That I, Gustav L. Schaldach, Assessor of the Village of Roseville of Macomb County, State of Michigan, by virtue of authority in me vested by Section 51, Act 172, of 1929, having been duly authorized by the Village Commission, have caused the land described in the annexed plat to be surveyed, laid out and platted, to be known as "ASSESSOR'S PLAT OF SCHOLLENBERGER SUB.", a replat of Lots 30 to 54 inc., of Christensen and Schram Sub., and part of S.E. 1/4 of Sec. 16 T. 1 N. R. 13 E., Village of Roseville, Macomb Co., Mich., and that the streets as shown on said plat are now being used for such purposes.

Witnesses,
Gustav L. Schaldach
Assessor of Roseville Village.

J. Russell Lehner
Notary Public in and for Macomb Co., Mich.

COUNTY OF MACOMB }
ON this 2nd day of April } SS.
A.D. 1940, before me, a Notary Public in and for said county, personally came the above named Gustav L. Schaldach, assessor of Roseville, known to me to be the person who executed the above dedication, and acknowledged the same to be his free act and deed as such assessor.

Norman C. Nindler
Notary Public in and for Macomb Co.

My Commission Expires March 12, 1941

DEDICATION OF LAND, TOWNSHIP.
The land embraced in the annexed plat of "ASSESSOR'S PLAT OF SCHOLLENBERGER'S SUB.", a replat of Lots 30 to 54 inc., of Christensen and Schram Sub., and part of S.E. 1/4 of Sec. 16 T. 1 N. R. 13 E., Village of Roseville, Macomb Co., Mich., is hereby dedicated to the public use of the State of Michigan.

above recitation, and acknowledged the same to be his free act and deed as such assessor.

Walter J. Lehner
 Notary Public in and for Macomb Co.
 My Commission Expires March 12, 1947

DECEASED OF LAND MARSHES.
 The land embraced in the annexed plat of "ASSESSOR'S PLAT OF SCHOLIMBERG'S SUB," a replat of lots 30 to 54 inc, of Christensen and Schram Sub, and part of S. 24 of N. 10 of Sec. 16 T. 1 N. E. 15, Village of Roseville, Macomb Co. Mich., is described as follows:
 Commencing at a point 647.89 ft. S. 89°-15' W. of the center post of said Sec. 16, and thence extending S. 89°-15' W. 355.60 ft; thence N. 10°-14'-30" W. 233.00 ft; thence S. 89°-15' W. 136.83 ft; thence N. 10°-14'-30" W. 1112.90 ft; thence N. 89°-03' E. 487.93 ft; thence S. 10°-26' E. 1347.50 ft. to the place of beginning.

SURVEYOR'S CERTIFICATE.
 I hereby certify that the plat hereon delineated is a correct one and that permanent metal monuments consisting of bars not less than one half inch in diameter and 48 inches in length, encased in a concrete cylinder at least 4 inches in diameter and 46 inches in depth have been placed at points marked thus (a) as thereon shown at all angles in the boundaries of the land platted, at all the intersections of streets, and at the intersections of streets with the boundaries of the plat as shown on said plat.

Walter J. Lehner
 Registered Land Surveyor

CERTIFICATE OF MULTIPAL APPROVAL.
 This plat was approved by the Village Board of Roseville, at a meeting held APR 2 1940 at 10:30 P.M.

Ray H. Ballena
 Mayor

Ray H. Ballena
 Judge of Probate.

Cuy L. Breen
 County Clerk.

Carl E. Brandenburg
 County Treasurer.

CERTIFICATE OF APPROVAL BY COUNTY BOARD.
 This plat was approved on the 21st day of May A.D. 1940

Bert Moore
 Chairman

Louis Schoenberger
 Vice-Chairman

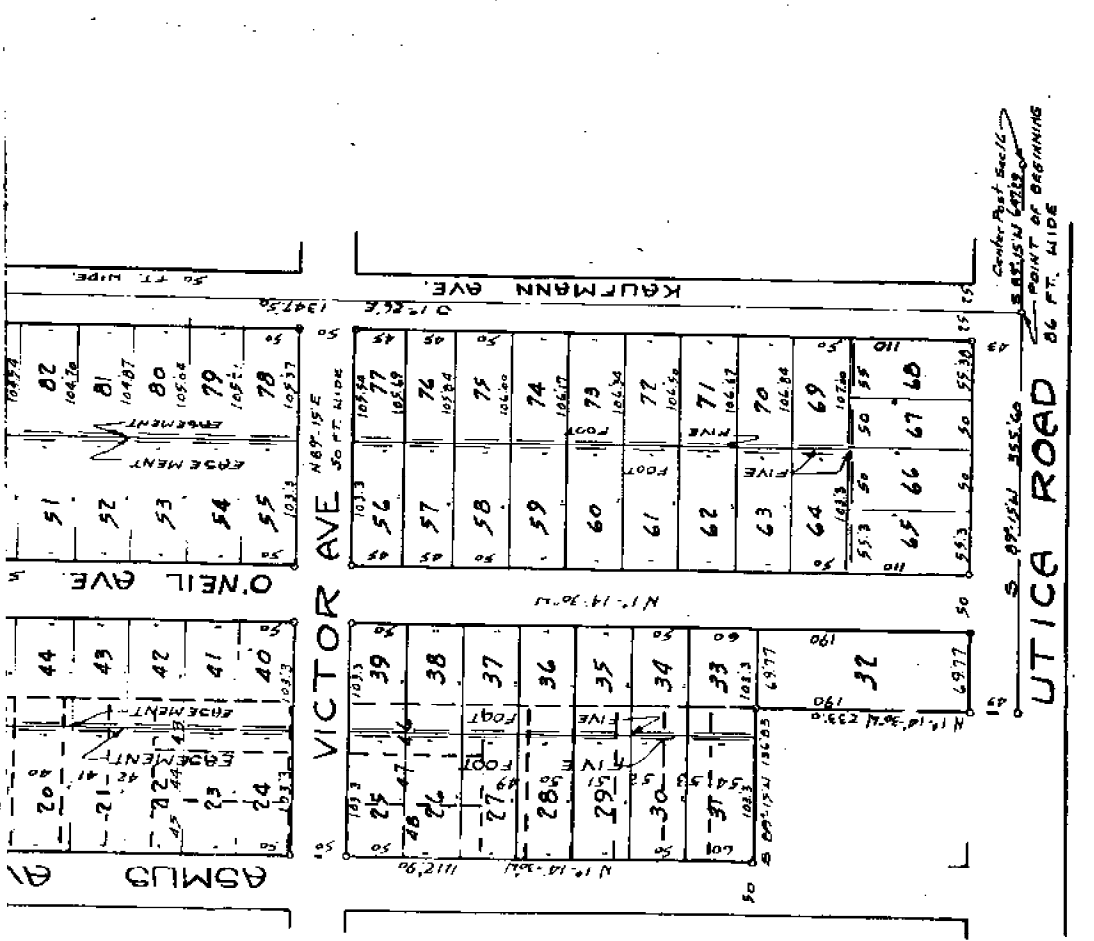
Harry V. V. Lemley
 Member

CERTIFICATE OF APPROVAL BY BOARD OF COUNTY ROAD COMMISSIONERS
 This plat has been examined and approved on the 23rd day of May 1940 by the Board of County Road Commissioners of Macomb County.

Bert Moore
 Chairman

Louis Schoenberger
 Vice-Chairman

Harry V. V. Lemley
 Member



REGISTER'S OFFICE
 County of Macomb
 Received for Recording
 MAY 22 1940
Walter J. Lehner
 Notary Public

Examined and Approved
 May 22 1940
Wayne J. Jurek
 Deputy Auditor General

See Register's Commission of John P. J. 503, Record
 See Register's Commission of John P. J. 503, Record

1-up

W. J. LEHNER No. 123

W. J. Lehner
1923

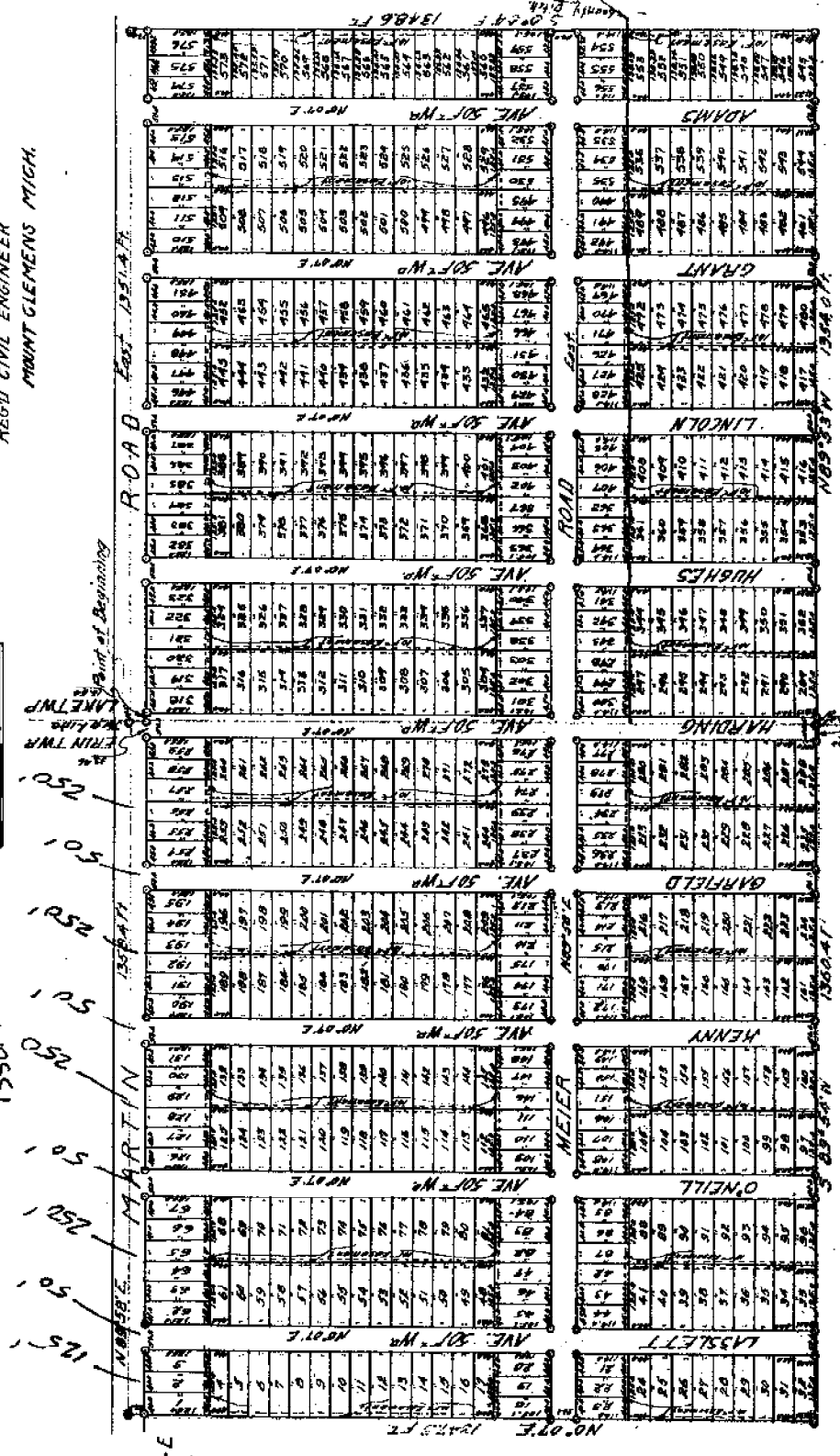
"STOEPHEL'S MARTIN ROAD SUBDIVISION"

OF NE 1/4 OF SW 1/4 OF FRACTIONAL SEC. 16 T. 19 N. R. 13 E.
AND NW 1/4 OF SE 1/4 OF FRACTIONAL SEC. 16 T. 19 N. R. 13 E.
LAKE TWP. MACOMB CO. MICHIGAN.

WALTER J. LEHNER
REGD CIVIL ENGINEER
MOUNT CLEMENS MICH.

Scale 1" = 200 FT.

1350.4



76
P. 28
L. 6

82
P. 28
L. 6

13486.7

1360.47

1360.47

1360.47

1360.47

30	31	32	33	34	35	36	37	38	39	40	41	42	43	44	45	46	47	48	49	50	51	52	53	54	55	56	57	58	59	60	61	62	63	64	65	66	67	68	69	70	71	72	73	74	75	76	77	78	79	80	81	82	83	84	85	86	87	88	89	90	91	92	93	94	95	96	97	98	99	100
----	----	----	----	----	----	----	----	----	----	----	----	----	----	----	----	----	----	----	----	----	----	----	----	----	----	----	----	----	----	----	----	----	----	----	----	----	----	----	----	----	----	----	----	----	----	----	----	----	----	----	----	----	----	----	----	----	----	----	----	----	----	----	----	----	----	----	----	----	----	-----

TO ALL MEN BY THESE PRESENTS, That we Charles Lassiter and Aleta E. Lassiter (his wife) of the County of Macomb, State of Michigan, do hereby certify that the plat hereon delineated is a correct and true and true permanent monuments consisting of 1/4 x 18 inch iron stakes have been planted at points marked "a" as thereon shown at all angles in the boundaries of the land placed and at all intersections of streets or alleys and alleys.

This is to certify that the above plat was approved by the County Clerk of the Township of St. Clair on this 23rd day of February 1925.

Robert J. Lehman County Clerk

This is to certify that the above plat was approved by the County Clerk of the Township of St. Clair on this 23rd day of February 1925.

Robert J. Lehman County Clerk

STATE OF MICHIGAN
County of Macomb
On this 23rd day of February 1925
before me, a Notary Public in and for said county, appeared Charles Lassiter and Aleta E. Lassiter (his wife) personally and Frederick S. Stover and Lorraine S. Stover (his wife) and the persons who executed the above dedication, and acknowledged said instrument to be the free and lawful act and deed of said parties.

My Commission Expires 23rd Feb 1925
Robert J. Lehman
Notary Public, Macomb Co., Mich.

The plat was recorded by James B. Gault County Treasurer on this 23rd day of February 1925 at 11:00 A.M. in Book 108 of Page 215.

COUNTY TREASURER'S CERTIFICATE
This is to certify that there are no Tax Liens or Taxes due by the State or any individual agents, and that all Taxes or other liabilities in the aforesaid instrument have been paid FIVE YEARS prior to the date thereof, according to the provisions of the Statutes of this State.

James B. Gault
County Treasurer, Macomb County, Mich.

REGISTER'S OFFICE
COUNTY OF MACOMB, Mich.
Received for Record this 23rd day of February A. D. 1925 at 11:00 A.M. and recorded in Book 108 of Page 215.

James B. Gault
Register

STATE OF MICHIGAN
County of Macomb
On this 23rd day of February 1925
before me, a Notary Public in and for said county, appeared Charles Lassiter and Aleta E. Lassiter (his wife) personally and Frederick S. Stover and Lorraine S. Stover (his wife) and the persons who executed the above dedication, and acknowledged said instrument to be the free and lawful act and deed of said parties.

My Commission Expires 23rd Feb 1925
Robert J. Lehman
Notary Public, Macomb Co., Mich.

TO ALL MEN BY THESE PRESENTS, That we Charles Lassiter and Aleta E. Lassiter (his wife) of the County of Macomb, State of Michigan, do hereby certify that the plat hereon delineated is a correct and true and true permanent monuments consisting of 1/4 x 18 inch iron stakes have been planted at points marked "a" as thereon shown at all angles in the boundaries of the land placed and at all intersections of streets or alleys and alleys.

This is to certify that the above plat was approved by the County Clerk of the Township of St. Clair on this 23rd day of February 1925.

Robert J. Lehman County Clerk

This is to certify that the above plat was approved by the County Clerk of the Township of St. Clair on this 23rd day of February 1925.

Robert J. Lehman County Clerk

STATE OF MICHIGAN
County of Macomb
On this 23rd day of February 1925
before me, a Notary Public in and for said county, appeared Charles Lassiter and Aleta E. Lassiter (his wife) personally and Frederick S. Stover and Lorraine S. Stover (his wife) and the persons who executed the above dedication, and acknowledged said instrument to be the free and lawful act and deed of said parties.

My Commission Expires 23rd Feb 1925
Robert J. Lehman
Notary Public, Macomb Co., Mich.

TO ALL MEN BY THESE PRESENTS, That we Charles Lassiter and Aleta E. Lassiter (his wife) of the County of Macomb, State of Michigan, do hereby certify that the plat hereon delineated is a correct and true and true permanent monuments consisting of 1/4 x 18 inch iron stakes have been planted at points marked "a" as thereon shown at all angles in the boundaries of the land placed and at all intersections of streets or alleys and alleys.

This is to certify that the above plat was approved by the County Clerk of the Township of St. Clair on this 23rd day of February 1925.

Robert J. Lehman County Clerk

This is to certify that the above plat was approved by the County Clerk of the Township of St. Clair on this 23rd day of February 1925.

Robert J. Lehman County Clerk

STATE OF MICHIGAN
County of Macomb
On this 23rd day of February 1925
before me, a Notary Public in and for said county, appeared Charles Lassiter and Aleta E. Lassiter (his wife) personally and Frederick S. Stover and Lorraine S. Stover (his wife) and the persons who executed the above dedication, and acknowledged said instrument to be the free and lawful act and deed of said parties.

My Commission Expires 23rd Feb 1925
Robert J. Lehman
Notary Public, Macomb Co., Mich.

[F-06]

L 11
F 36

1926 H. R. O'MARA

Examined and Approved
July 18-1926
H. R. O'MARA
County Auditor

"CHRISTENSEN AND SCHRAM SUBD'N."

PART OF THE W 1/2 OF THE SE 1/4 OF THE NW 1/4 OF SECTION 16 T. 19 N. R. 13 E.

ERIN TOWNSHIP MACOMB COUNTY MICHIGAN

Scale - 1 in. = 100 ft.

H. R. O'MARA
Reg. Civil Engineer
Halfway, Mich.



S 89° 10' 37" W		356.03	
26	27 28 29	30 31 32	
4204 4212	412	424 426 428	
MELVIN AVE. SOWD. R.			
4232 423	423	426 428 430	
25	24 23 22	35 34 33	
Easement		S. 1/2 W 1/2	
40 105 11	12 20	20 21 22	23 24 25
40	20	20	20
16	16	16	16
8	8	8	8

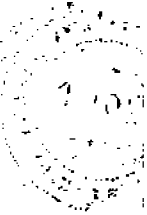
KNOW ALL MEN BY THESE PRESENTS, That we Jan Christensen and Elizabeth Christensen his wife and August Matheson and Catherine Matheson his wife as copartners and partners, Estem and Anna Johnson his wife as sisters and the above named parties as mortgagees as mortgagees, have caused the land embraced in the annexed plat to be surveyed, laid out and platted, to be known as "CHRISTENSEN AND SCHRAM SUBD'N" part of the W 1/2 of the S. 1/4 of the N. 1/2 of Section 16 T. 19 N. R. 13 E. Erin Township, Macomb County, Michigan, and that the streets and alleys as shown on said plat are hereby dedicated to the use of the public.

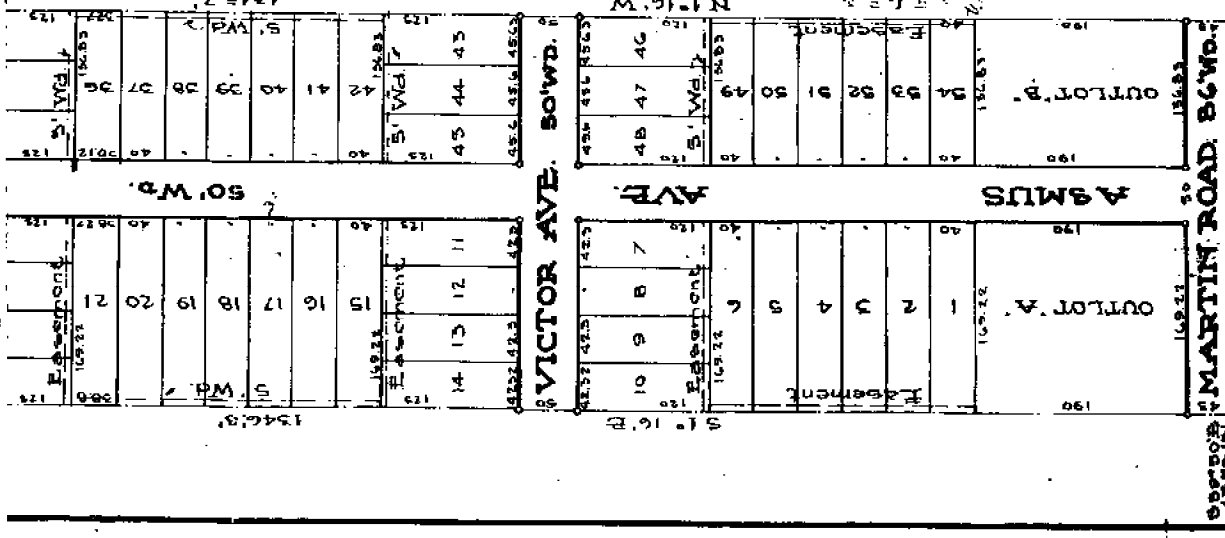
Signed and Sealed in Presence of:

William C. Lane
E. O. Kelly

George J. Allmendinger (S.)
John J. Allmendinger (S.)
John Christensen (T. S.)
August Christensen (T. S.)
Adrian Christensen (T. S.)
Anna Christensen (T. S.)
THE STATE OF MICHIGAN
By *George J. Allmendinger* (S.)

STATE OF MICHIGAN
County of Macomb





W. C. ...
 J. ...
 STATE OF MICHIGAN
 County of Macomb

James Christensen (L.S.)
 August Christensen (L.S.)
 Alexander Johnson (L.S.)
 Wm. ... (L.S.)
 THE STATE BOARD OF TAXES
 By George T. ... (L.S.)
 On this 17th day of May 1926, before me, a Notary Public in and for said county, personally came the above named, James Christensen, August Christensen, Alexander Johnson, Wm. ... and George T. ... and acknowledged the same to be their free act and deed.

My Commission expires August 5th, 1927.
 Notary Public Macomb Co., Mich.

DESCRIPTION OF LAND PLATTED

The land embraced in the annexed plat of CHRISTENSEN AND JOHNSON SUBDIVISION of the W. 1/4 of the S. 2 of the N. 1 of Section 16, T. 18 N., R. 17 W., Erin Township, Macomb County, Michigan, is described as follows: Beginning at a point which is S. 89° 50' E. a distance of 137.15 ft. from the W. 1/4 post of fractional Section 16 T. 18 N., R. 17 W., Erin Township, Macomb County, Michigan. Thence N. 89° E. a distance of 256.05 ft. thence N. 1° 16' W. a distance of 1345.70 ft. Thence S. 89° 50' W. a distance of 256.05 ft. Thence S. 1° 16' E. a distance of 1346.80 ft. to the point of beginning.

ENGINEER'S CERTIFICATE

I hereby certify that the plat hereon delineated is a correct one and that permanent metal monuments of not less than one inch in diameter and fifteen inches in length set in a concrete base at least four inches in diameter and forty-eight inches in depth have been placed at points marked thus (O) as thereon shown at all angles in the boundaries of the land platted, at all the intersections of streets, intersections of alleys, or of streets and alleys, and at the intersections of streets and alleys with the boundaries of the plat as shown on said plat.

A. P. ...
 REGISTERED CIVIL ENGINEER.

CERTIFICATE OF TOWNSHIP APPROVAL

This plat was approved by the Township Board of Erin Township at a meeting held Jan 17th 1926

Robert J. ...
 Clerk

STATE OF MICHIGAN, 1926
 County of Macomb.

On this fourth day of May, 1926, before me, James C. K. ... a Notary Public in and for said county appeared George Storfens, President, and Henry Bohn, Cashier, to me personally known, who being each by me duly sworn did say that they are the President and Cashier respectively of the Fraser State Bank & Michigan Corporation, and that the seal affixed to said instrument is the corporate seal of said corporation and that said instrument was signed and sealed in behalf of said corporation by authority of its Board of Directors and the said George Storfens and Henry Bohn acknowledge the said instrument to be the free act and deed of said corporation.

James C. K. ...
 Notary Public Macomb Co., Mich.

CERTIFICATE OF BEGINNING

This is to certify that the above described land was first located on the 17th day of May, 1926, and that the same was first platted on the 17th day of May, 1926, and that the same was first recorded on the 17th day of May, 1926.

George T. ...
 Notary Public Macomb Co., Mich.

L-17

P 6-7

1930 W. J. LEMNER No. 123

SHEET 1 OF 2

Aug 6 - 1930
W. J. Lemner
Ready for the Commission

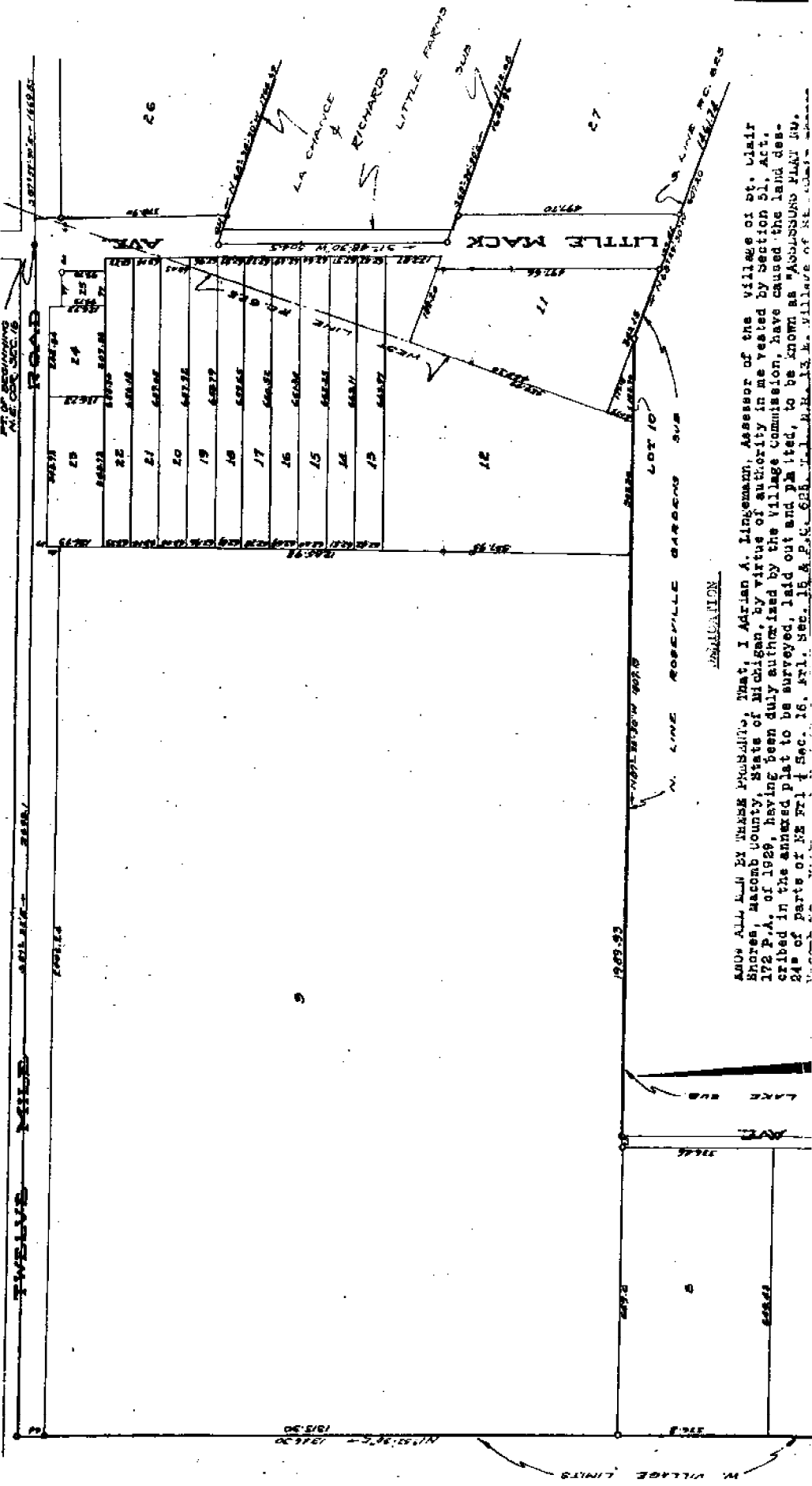
ASSESSORS PLAT No 24

OF PARTS OF NE. 1/4 SEC. 16, ERL SEC. 15 & F.C. 625 T1.N.R.13.E.
VILLAGE OF ST CLAIR SHORES MACOMB CO. MICH.

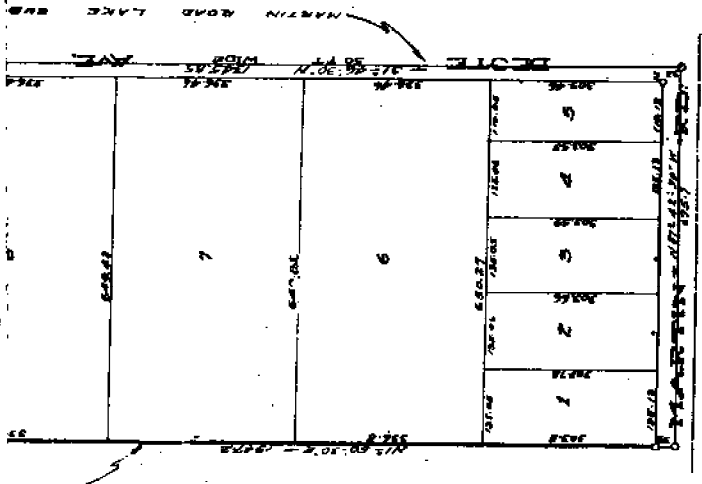
5232

SCALE 1" = 200'

WALTER J. LEMNER REG. C.E.
FR. CLEMENS MICH.



AS SHOWN ALL LOTS BY THESE PROVISIONS, THAT, I Adrian A. Lingenmann, Assessor of the village of St. Clair Shores, Macomb County, State of Michigan, by virtue of authority in me vested by Section 51, Act 172 P.A. of 1929, having been duly authorized by the Village Commission, have caused the land described in the annexed plat to be surveyed, laid out and plotted, to be known as "ASSESSORS PLAT No. 24" of parts of NE 1/4 Sec. 16, ERL Sec. 15 & P.C. 625 T1.N.R.13.E. Village of St. Clair Shores, Macomb County, Michigan.



KNOW ALL MEN BY THESE PRESENTS, That, I Adrian A. Lingsmann, Assessor of the Village of St. Clair Shores, Macomb County, State of Michigan, by virtue of authority in me vested by section 51, act 172 P.A. of 1929, having been duly authorized by the Village Commission, have caused the land described in the annexed plat to be surveyed, laid out and platted, to be known as 'ABSESSORS PLAT NO. 24' of parts of NG 771 & Sec. 16, 771, Sec. 16, P. 1. Sec. 16 & P. 1. Sec. 16, P. 1, R.R. 13 N. Village of St. Clair Shores Macomb Co., Mich., and that the streets and alleys as shown on said plat are hereby dedicated to the use of the public.

Adrian A. Lingsmann
 Assessor of the Village of St. Clair Shores

ASSASSON OF THE VILLAGE OF ST. CLAIR SHORES

Witnesses

E. Eld M. Allen
Elizabeth Tolman

REGISTRAR'S OFFICE
 County of Macomb, Mich.

Received for Record this
 day of AUG 1930 A.D. 1930
 at St. Clair Shores, Mich.
 in Liber 15 of Plats
 on Page 67
Chas. J. Oberdick
 Registrar

STATE OF MICHIGAN } SS
 COUNTY OF MACOMB }

On this 15th day of July, 1930 before me a Notary Public in and for said county, known to me to be the person who executed the above dedication and acknowledged the same to be his free act and deed as such Assessor.

Chas. J. Oberdick
 Notary Public in and for Macomb Co.
 My Commission expires Feb. 28, 1932

DESCRIPTION

The land embraced in the annexed plat of 'ABSESSORS PLAT NO. 24' of parts of N.E. 1712, Sec. 16, and P. 1, E.R. 13 N. Village of St. Clair Shores, Macomb Co., Mich., and described as follows:

Beginning at the N.E. corner of Sec. 16, thence S. 87°59'30" E. 1689.85 ft., thence S. 21°12'30" W. 1002.55 ft., thence N. 68°35'30" W. 1764.89 ft., thence S. 1°48'30" W. 504.50 ft., thence S. 88°30'30" E. 1712.65 ft., thence S. 23°37'30" W. 469.26 ft., thence S. 80°36'30" E. 1735.22 ft., thence S. 21°19'20" W. 143.60 ft., thence N. 88°45'30" W. 350.97 ft., thence S. 88°40'30" W. 1109.78 ft., thence S. 2°04' W. 2640.82 ft., thence S. 89°41'30" W. 1027.48 ft., thence N. 1°48'30" E. 2670.08 ft., thence N. 88°40'30" W. 215.88 ft., thence N. 1°51'30" E. 1126.02 ft., thence S. 85°29'30" W. 607.20 ft., thence N. 87°33'30" W. 1807.13 ft., thence S. 1°48'30" W. 1348.86 ft., thence N. 87°42'30" W. 675.7 ft., thence N. 1°50'30" W. 1347.2 ft., thence S. 1°48'30" E. 1346.30 ft., thence S. 87°35' E. 2693.1 ft., to the point of beginning. Excepting the following described parcel, beginning at a point on the E. 1/2 of Sec. 16, line of Sec. 16, 173.22 ft. S. 88°45'30" E. of the intersection of the E. and W. lines of S. 16, and the centerline of Harper Ave., thence N. 2°08'30" E. 208.52 ft., thence S. 68°36'30" E. 155.6 ft., thence S. 21°19'20" W. 161.61 ft., thence N. 85°45'30" W. 127.75 ft., to the point of beginning.

SURVEYORS CERTIFICATE

I hereby certify that the plat hereon delineated is a correct one and that prominent metal monuments of not less than one inch in diameter and fifteen inches in length set in a concrete base at least four inches in diameter are correctly placed in the boundaries of the land platted at points marked thus as thereon shown at all angles in the boundaries of the streets and alleys, and at the intersection of streets and alleys with the boundaries of the plat as shown on said plat.

Chas. J. Oberdick
 REGISTRAR CIVIL ENGINEER

This plat was approved by the Village Commission of the Village of St. Clair Shores at a meeting held July 15, 1930

Chas. J. Oberdick
 CLERK

Adrian A. Lingsmann
 Assessor of the Village of St. Clair Shores
 Macomb County, Michigan
 My Commission expires Feb. 28, 1932

SHEET 2 OF 2

ASSESSORS PLAT NO 24

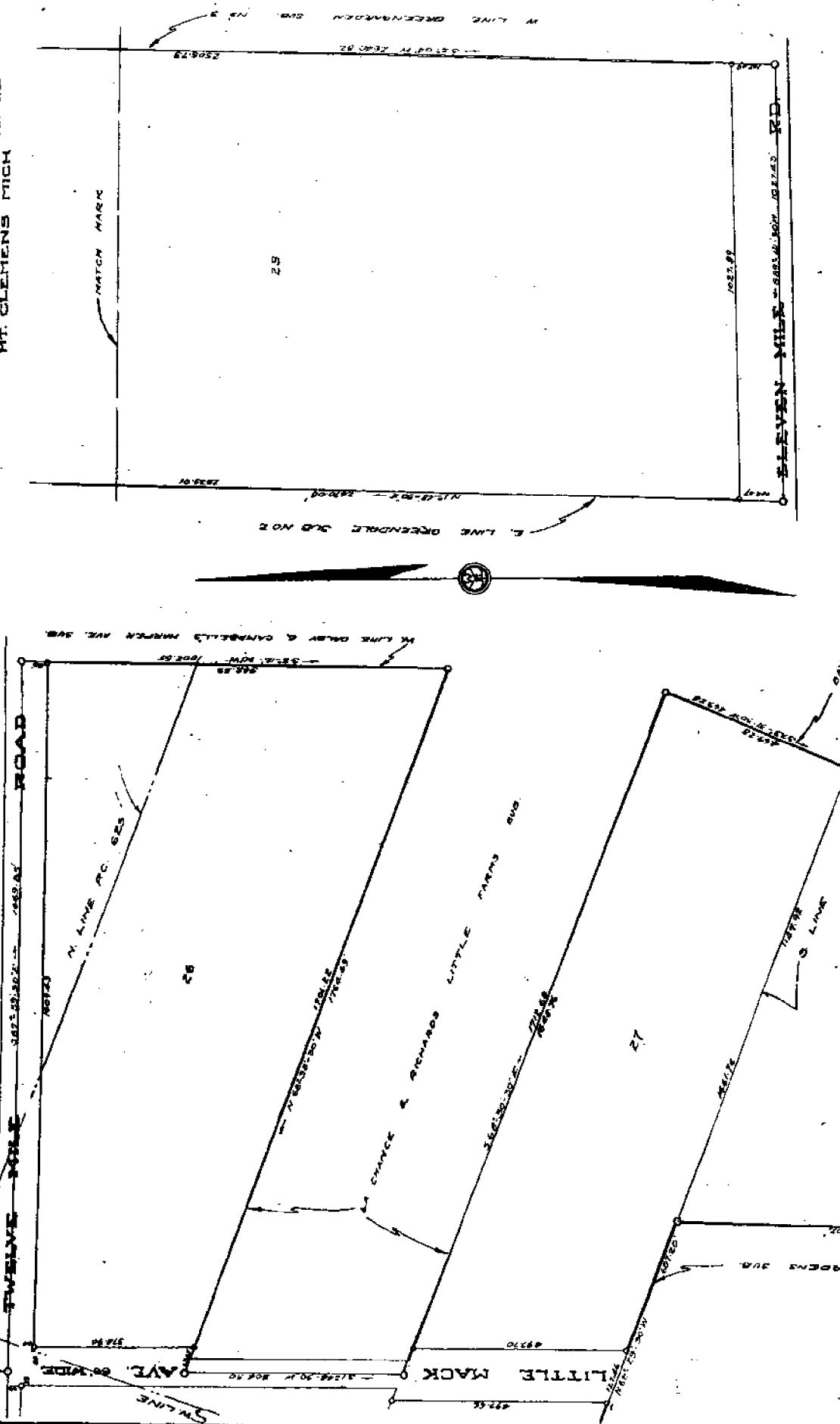
OF PARTS OF NE. 1/4 SEC. 16, T.1N. R.13. E.
VILLAGE OF ST CLAIR SHORES MACOMB CO. MICH

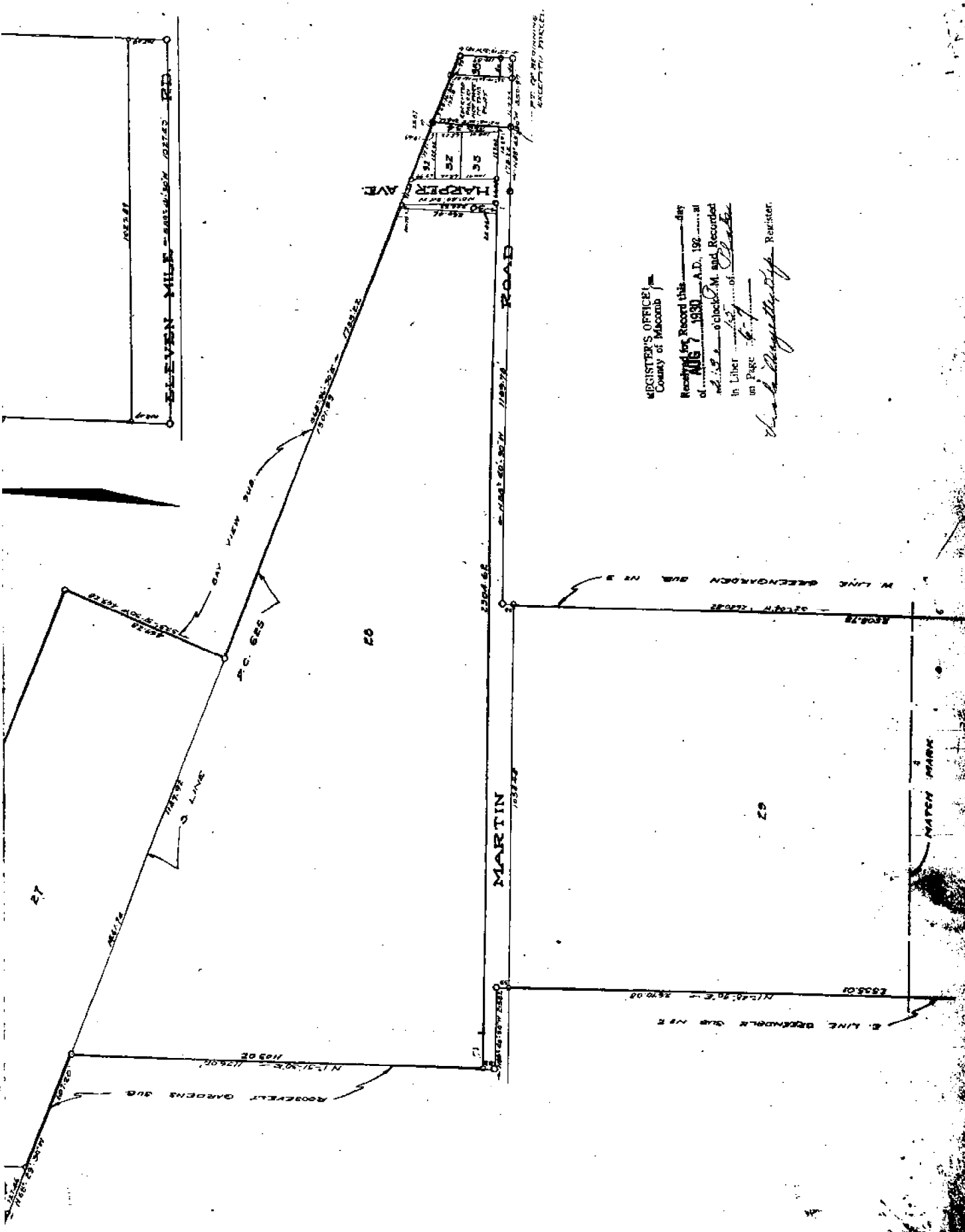
5232

WALTER J. LENNER REG. C.E.
MT. CLEMENS MICH

SCALE 1" = 500'

TWELVE MILE





REGISTRAR'S OFFICE
County of Macomb

Received for Record this _____ day
of **AUG 7** 1930 A.D. 192 _____ at
_____ o'clock P.M. and Recorded
in Liber _____ of _____
in Page _____ of _____

Frank P. [Signature]
Registrar

SEE PLAN FOR THE
EXACT POSITION OF
PROPERTY LINES.

108	107	106	105	104	103	102	101	100	99	98	97	96	95	94	93	92	91	90	89	88	87	86	85	84	83	82	81	80	79	78	77	76	75	74	73	72	71	70	69	68	67	66	65	64	63	62	61	60	59	58	57	56	55	54	53	52	51	50	49	48	47	46	45	44	43	42	41	40	39	38	37	36	35	34	33	32	31	30	29	28	27	26	25	24	23	22	21	20	19	18	17	16	15	14	13	12	11	10	9	8	7	6	5	4	3	2	1
-----	-----	-----	-----	-----	-----	-----	-----	-----	----	----	----	----	----	----	----	----	----	----	----	----	----	----	----	----	----	----	----	----	----	----	----	----	----	----	----	----	----	----	----	----	----	----	----	----	----	----	----	----	----	----	----	----	----	----	----	----	----	----	----	----	----	----	----	----	----	----	----	----	----	----	----	----	----	----	----	----	----	----	----	----	----	----	----	----	----	----	----	----	----	----	----	----	----	----	----	----	----	----	---	---	---	---	---	---	---	---	---

Signed & Dealed in the Presence of
 William J. ...
 Mary ...
 Stanley ...
 Jeanette ...
 Joseph ...
 Mary ...

State of Michigan
 County of ...
 On this ... day of ... 192 ...
 before me, a Notary Public in and for said County, personally
 name the above named ...
 known to me to be the persons who executed the above docu-
 ment, and acknowledged the same to be their act and deed.
 My Commission Expires October 15th 1926.

This is to certify that the above plat was approved by the
 Township Board of the Township of ...
 Macomb County, Michigan, at a meeting held this ... day of ... 192 ...

REGISTER'S OFFICE
 COUNTY OF MACOMB
 Received for Record ...
 A. D. ...
 in Liber ...
 on page ...
 Deputy

Description of Land ...
 The Land embraced in the annexed Plat of ...
 Subdivision of the SE 1/4 of the NE 1/4 of T16 S16 E17 N16 E
 Lake Trp. Macomb Co. Mich.
 is described as follows: Beginning at the E 1/4 corner of
 said Sec. 16. Thence N 89° 53' W, 1344.0 Ft., thence
 N 0° 28' W, 1344.44 Ft., thence S 89° 46' E 1173.1 Ft.
 thence S 69° 45' E 183.09 Ft., thence S 0° 22' E
 1279.1 Ft. to point of beginning.

I hereby certify that the plat hereon delineated is a correct one
 and that permanent monuments consisting of 1/2 x 18 inch iron
 Stakes have been placed at points marked "o" as thereon
 shown at all angles in the boundaries of the land platted and
 at all intersections of streets or streets and alleys.
 Registered: C.E.

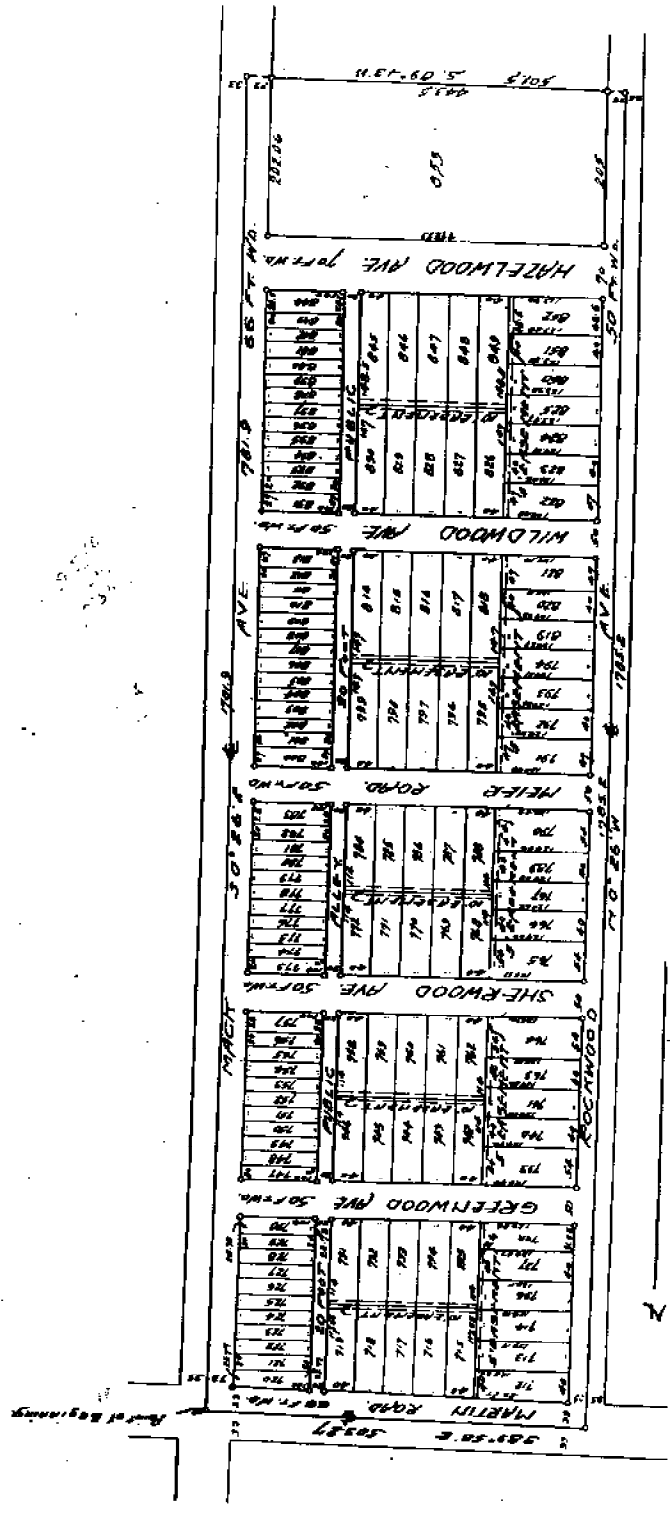
1K-06

1924

A. R. CIMARA (C.E.)

Dec 9-1924
To F. H. HARRIS

GREENGARDEN SUBDIVISION No 2.
OF PART OF THE S.E. 1/4 OF SEC. 16 T. 17. N. R. 13. E.
LAKE TWP. MACOMB CO. MICH.



KNOW ALL MEN BY THESE PRESENTS, That we Charles Fatow
Louise Fatow his wife, as proprietors, have caused the land
 embraced in the annexed plat to be surveyed, laid out and platted
 to be known as "GREENGARDEN SUBDIVISION No 2" part of the S.E. 1/4 Sec. 16
 T. 17. N. R. 13. E. Lake Twp., Macomb Co., Michigan and that the streets
 and Alleys as shown on said plat are hereby dedicated to the
 use of the public.

Signed and Sealed in Presence of _____ (L.S.)
 _____ (L.S.)
 _____ (L.S.)

CERTIFICATE OF TOWNSHIP BOARD

This plat was approved by the Township Board of Lake Twp. at a meeting held on the 11th day of December A.D. 1924.

 TOWNSHIP BOARD

DESCRIPTION OF LAND

Signed and Sealed in Presence of

_____	(L.S.)
_____	(L.S.)
_____	(L.S.)
_____	(L.S.)

STATE OF MICHIGAN }
 COUNTY OF Macomb } SS

On this 10th day of November A.D. 19 24
 before me, a notary public, in and for said county, personally came
 the above named Charles F. Blum
and Louis Blum his wife
 known to me to be the persons who executed the above dedication
 and acknowledged the same to be their free act and deed.

My commission expires _____ CO., MICH.

ENGINEER'S CERTIFICATE

I hereby certify that the plat hereon delineated is a correct one
 and that permanent monuments consisting of 3" iron spikes 18" long
 at all angles in the boundaries of the land platted and at all
 intersections of streets or streets and alleys.

W. H. ...
 REGISTERED CIVIL ENGINEER

NOTARY PUBLIC
 COUNTY OF MACOMB
Charles F. Blum
Louis Blum
1000 ...
...
...



DESCRIPTION OF LAND

The land embraced in the annexed plat of 'ORCHARDGARDEN SUBDIVISION #2 of part of the S.E. 1/4 of Sec. 15 T.1.N. R.13.E. Lake Twp. Macomb Co. Mich. is described as follows to wit:
 Beginning at the E1/2 post of fractional T.1.N. R.13.E. Lake Twp. Macomb Co. Mich. Thence S04degrees 26'3" a distance of 1781.9 feet. Thence S 89 degrees 43'W a distance of 501.6 feet. Thence N 0 degrees 25'W a distance of 1785.2 feet. Thence S 89 degrees 58'W a distance of 503.27 to the point of beginning.

This plat was approved by the Board of Supervisors of Macomb County Michigan
Charles F. Blum
...
...
 County Treasurer
...

COUNTY OF MACOMB

This plat was approved by the Board of Supervisors of Macomb County Michigan
Charles F. Blum
...
...
 County Treasurer
...

65

See Restrictions, Liber 1004 Deeds, page 2
 T.1.N. R.13.E. Lake Twp. Macomb Co. Mich. 10/10/24

F-061

882
L.7

1924

H. R. O'MARA

GREENGARDEN SUBDIVISION No. 1

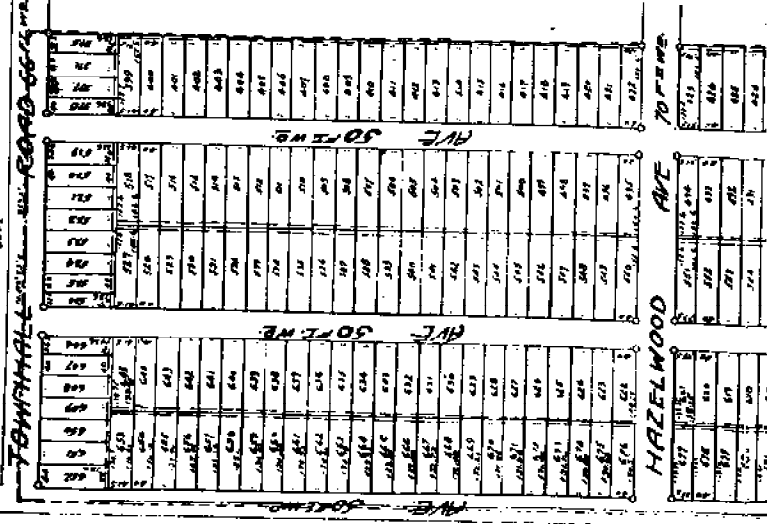
OF PART OF THE S.W. 1/4 OF SEC. 16 T. 14 N. R. 23 W. 1st 2nd 3rd 4th 5th 6th 7th 8th 9th 10th 11th 12th 13th 14th 15th 16th 17th 18th 19th 20th 21st 22nd 23rd 24th 25th 26th 27th 28th 29th 30th 31st 32nd 33rd 34th 35th 36th 37th 38th 39th 40th 41st 42nd 43rd 44th 45th 46th 47th 48th 49th 50th 51st 52nd 53rd 54th 55th 56th 57th 58th 59th 60th 61st 62nd 63rd 64th 65th 66th 67th 68th 69th 70th 71st 72nd 73rd 74th 75th 76th 77th 78th 79th 80th 81st 82nd 83rd 84th 85th 86th 87th 88th 89th 90th 91st 92nd 93rd 94th 95th 96th 97th 98th 99th 100th

LAKE TWP. MACOMB CO. MICH.

July 2-1924

SCALE -
1 INCH = 200 FT.

NOTE: All dimensions are given in feet and decimal thereof.



DEDICATION

KNOW ALL MEN BY THESE PRESENTS: That we HENRY PATOW as Proprietor, and

MARY PATOW his wife,

have caused the land embraced in the annexed plat to be surveyed laid out and plotted to be known as GREENGARDEN SUBDIVISION No. 1 of part of the S.W. 1/4 of Sec. 16 T. 14 N. R. 23 W. 1st 2nd 3rd 4th 5th 6th 7th 8th 9th 10th 11th 12th 13th 14th 15th 16th 17th 18th 19th 20th 21st 22nd 23rd 24th 25th 26th 27th 28th 29th 30th 31st 32nd 33rd 34th 35th 36th 37th 38th 39th 40th 41st 42nd 43rd 44th 45th 46th 47th 48th 49th 50th 51st 52nd 53rd 54th 55th 56th 57th 58th 59th 60th 61st 62nd 63rd 64th 65th 66th 67th 68th 69th 70th 71st 72nd 73rd 74th 75th 76th 77th 78th 79th 80th 81st 82nd 83rd 84th 85th 86th 87th 88th 89th 90th 91st 92nd 93rd 94th 95th 96th 97th 98th 99th 100th

Signed and Sealed in Presence of Henry Patow (I.S.)

Mrs. Edgewood Patow (I.S.)

Geo. E. R. White (I.S.)

STATE OF MICHIGAN
COUNTY OF MACOMB

this 24 day of June A.D. 1924 before me, a Notary Public,

in and for said county, personally saw the above named HENRY PATOW and

MARY PATOW, HIS WIFE

know to be the persons who executed the above dedication, and subscribed at the same to be their free act and deed.

Geo. S. Connelley Notary Public
My commission expires Oct. 24 1927

EXHIBITS OR REFERENCE

I hereby certify that the plat herein delineated is a correct one, and that respondent's declaration of the facts herein stated have been filed at the proper office and that the same are correct and true in all particulars of the land and all its appurtenances.

Notice to the Public (Notice) after 28th April 1916 88

Notary Public
 Wayne
 Commission expires 25th Dec 1916

HAZELWOOD AVE		ROAD		ROAD		ROAD	
101	102	103	104	105	106	107	108
109	110	111	112	113	114	115	116
117	118	119	120	121	122	123	124
125	126	127	128	129	130	131	132
133	134	135	136	137	138	139	140
141	142	143	144	145	146	147	148
149	150	151	152	153	154	155	156
157	158	159	160	161	162	163	164
165	166	167	168	169	170	171	172
173	174	175	176	177	178	179	180
181	182	183	184	185	186	187	188
189	190	191	192	193	194	195	196
197	198	199	200	201	202	203	204
205	206	207	208	209	210	211	212
213	214	215	216	217	218	219	220
221	222	223	224	225	226	227	228
229	230	231	232	233	234	235	236
237	238	239	240	241	242	243	244
245	246	247	248	249	250	251	252
253	254	255	256	257	258	259	260
261	262	263	264	265	266	267	268
269	270	271	272	273	274	275	276
277	278	279	280	281	282	283	284
285	286	287	288	289	290	291	292
293	294	295	296	297	298	299	300

I hereby certify that the plot herein delineated is a correct one and that permanent monuments exist at all points at all angles in the boundaries of the same and at all intersections of streets.

Notary Public
 Wayne
 Commission expires 25th Dec 1916

REGISTERED CIVIL ENGINEER

This plot was approved by the township board of the township of Lake at a meeting held on the 2nd day of June 1916.

Notary Public
 Wayne
 Commission expires 25th Dec 1916

THE SAID SECTION IS THE SAME AS THAT SHOWN ON THE MAP OF THE TOWNSHIP OF LAKE, IN THE COUNTY OF WAYNE, MICHIGAN, AS FILED IN THE OFFICE OF THE REGISTERED CIVIL ENGINEER, AT DETROIT, MICHIGAN, ON THE 15th DAY OF MARCH, 1916, AND IS THE SAME AS THAT SHOWN ON THE MAP OF THE TOWNSHIP OF LAKE, IN THE COUNTY OF WAYNE, MICHIGAN, AS FILED IN THE OFFICE OF THE REGISTERED CIVIL ENGINEER, AT DETROIT, MICHIGAN, ON THE 15th DAY OF MARCH, 1916, AND IS THE SAME AS THAT SHOWN ON THE MAP OF THE TOWNSHIP OF LAKE, IN THE COUNTY OF WAYNE, MICHIGAN, AS FILED IN THE OFFICE OF THE REGISTERED CIVIL ENGINEER, AT DETROIT, MICHIGAN, ON THE 15th DAY OF MARCH, 1916.

This plot was approved by the township board of the township of Lake at a meeting held on the 2nd day of June 1916.

Notary Public
 Wayne
 Commission expires 25th Dec 1916

NOTARY PUBLIC
 COUNTY OF WAYNE
 My commission expires 25th Dec 1916



F-06

L.7
P.87

1924

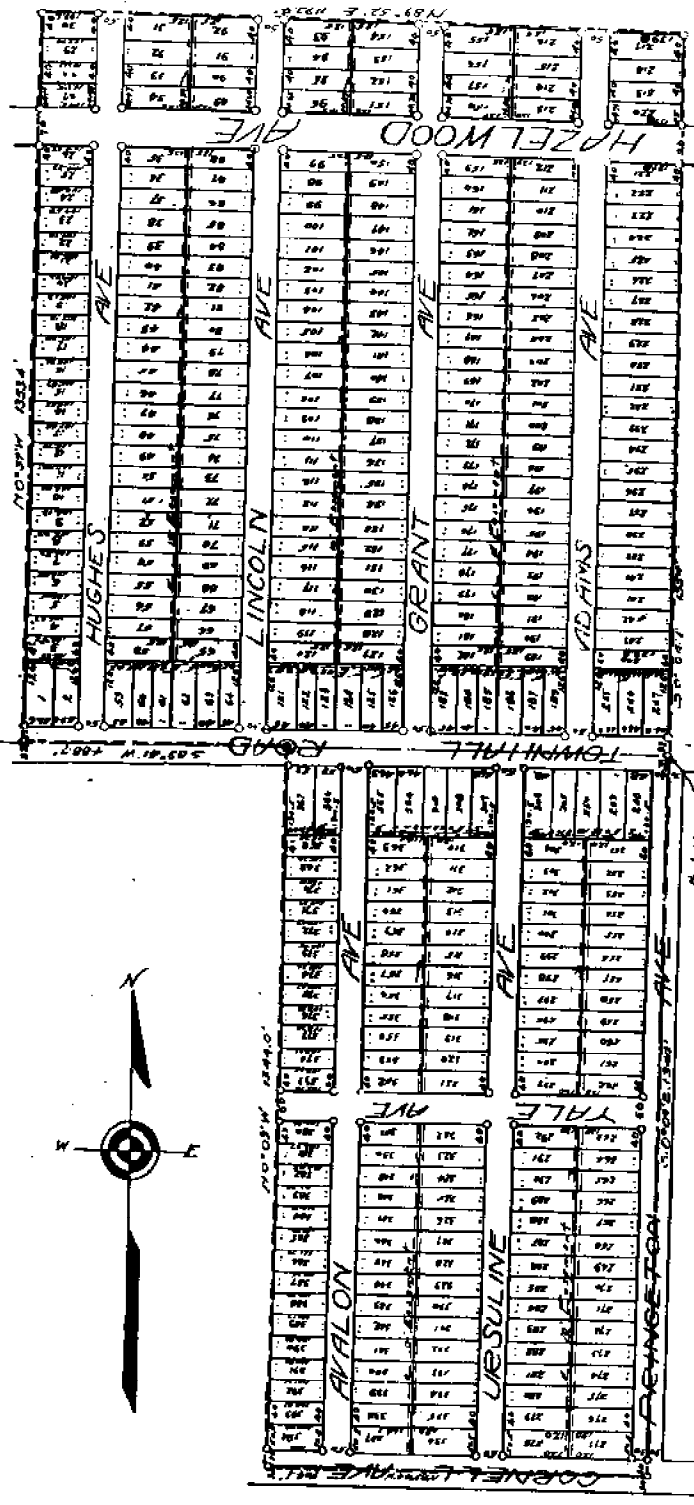
O'MARA (C.E.)

Page 87

GREENGARDEN SUBDIVISION
 OF PART OF THE SE 1/4 SEC. 16 & THE NE 1/4 SEC. 21
 LAKE TWP
 MACOMB CO.
 MICH.

July 2-1924

SCALE: 1"=200'



This plat was prepared by the township board of the Township of Lake at a meeting held on the 21st day of July, 1924.

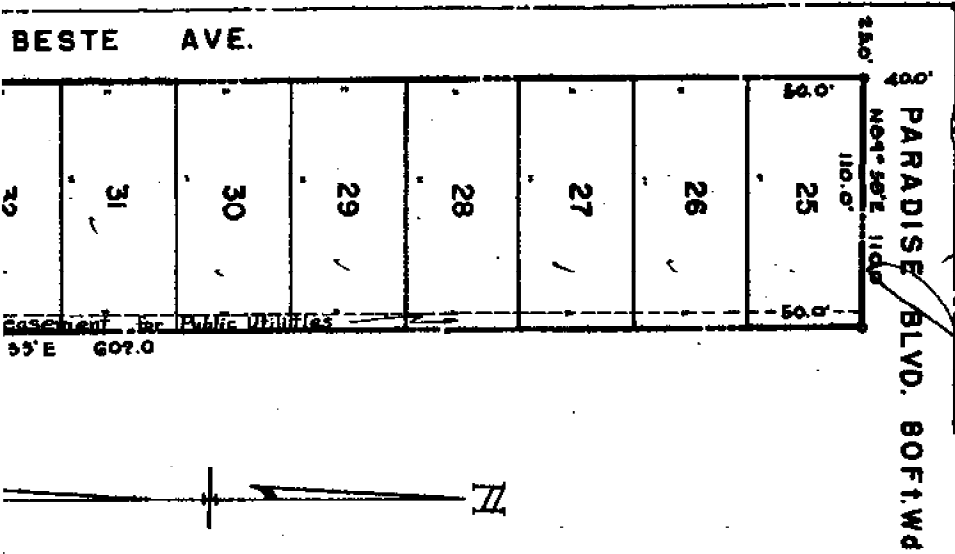
Attest: _____

"GORDON ROCK SUBDIVISION NO. 1"

OF LOT 1 OF JOHN BESTE SUBDIVISION OF PART OF THE NE. 1/4 OF SEC. 16, T.19.13E. CITY OF ST. CLAIR SHORES, MACOMB CO., MICHIGAN

EXAMINED AND APPROVED
Date AUG 1 1955

Notary Public
Notary Public



ACKNOWLEDGEMENTS

STATE OF MICHIGAN }
COUNTY OF WAYNE } SS.
I, Leonard S. Herman, day of July, 1954, before me a Notary Public in and for said County of Wayne, personally came the above named Frederick T. Moser and Edith J. Moser, his wife, to me to be the persons who executed the above dedication, and acknowledged the same to be their free act and deed.
My commission expires: July 7, 1954

Leonard S. Herman
LEONARD S. HERMAN
Notary Public, Wayne Co., Michigan.

STATE OF MICHIGAN }
COUNTY OF WAYNE } SS.
I, Leonard S. Herman, day of July, 1954, before me, a Notary Public in and for said County of Wayne, appeared Kenneth V. Lenchner and Ernest J. Stecker to me personally known, who being by me duly sworn did say that they are the President and Secretary respectively of the Rock Gravel Builders, Inc., a Michigan Corporation, and that said instrument was signed in behalf of said corporation by authority of its Board of Directors, and the said Kenneth V. Lenchner and Ernest J. Stecker acknowledged said instrument to be the free act and deed of said corporation.
My commission expires: July 7, 1954

Leonard S. Herman
LEONARD S. HERMAN
Notary Public, Wayne Co., Michigan.

STATE OF MICHIGAN }
COUNTY OF WAYNE } SS.
I, Leonard S. Herman, day of July, 1954, before me, a Notary Public, in and for said County of Wayne, appeared Roy Rock and Wilfred Rock to me personally known, who being each by me sworn did say that they are the President and Secretary respectively of the Rock Gravel Builders, Inc., a Michigan Corporation, and that said instrument was signed in behalf of said corporation by authority of its Board of Directors, and the said Roy Rock and Wilfred Rock acknowledged said instrument to be the free act and deed of said corporation.
My commission expires: July 7, 1954

Leonard S. Herman
LEONARD S. HERMAN
Notary Public, Wayne Co., Michigan.

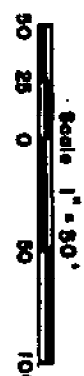
DESCRIPTION

That certain land embraced in the annexed plat of "Gordon Rock Subdivision No. 1" of Lot 1 of John Beste Subdivision of part of the N. E. 1/4 of Sec. 16, T. 19 N., R. 13 E., City of St. Clair Shores, Macomb Co., Michigan, is described as follows: Commencing at the center post of said Section and thence extending N. 89°-58' E. 700.14 feet; thence N. 0°-33' W. 43.0 feet to the point of beginning of this description and thence extending N. 0°-33' W. 502.0 feet; thence N. 89°-58' E. 50.0 feet; thence S. 0°-33' E. 602.0 feet; thence S. 89°-58' W. 110.0 feet to the point of beginning.

Approved by the City of St. Clair Shores Planning Commission on the 25th day of MAY, 1954.

W. R. Blinks
City Clerk

K. O. ...
Register

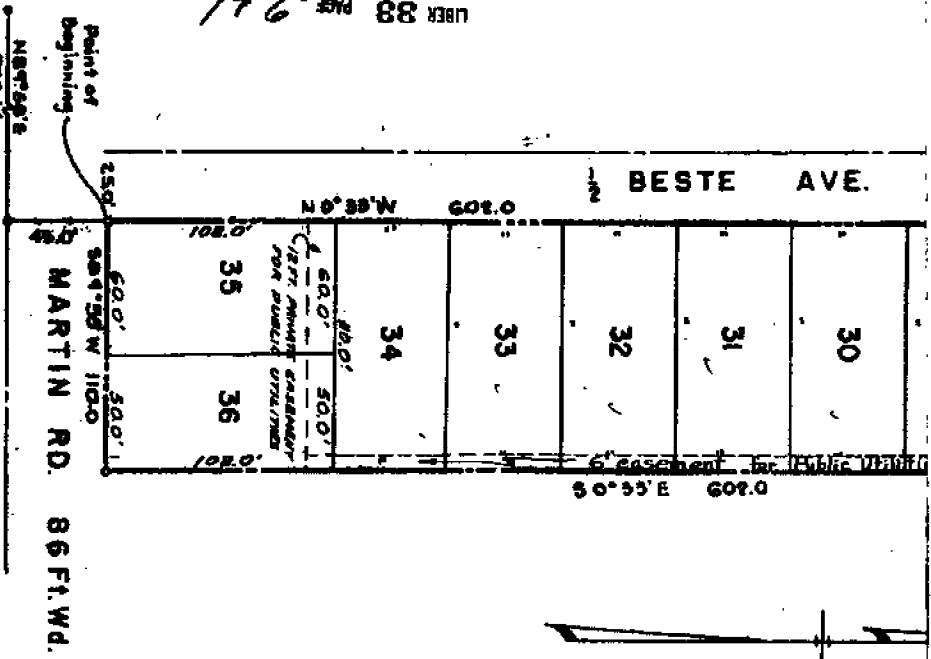


Notes: All dimensions are in feet and decimals thereof.

Walter J. Lerner & Sons
Reg. Civil Engineers & Surveyors
Mt. Clemens, Michigan.

REGISTERS OFFICE
COUNTY OF MACOMB

240344



THIS IS TO CERTIFY THAT THE QUANTITIES OF LAND SHOWN ON THIS PLAT ARE CORRECT AND THAT THE PLAT IS IN ACCORDANCE WITH THE ACTS OF THE LEGISLATURE OF THE STATE OF MICHIGAN, PASSED MARCH 18, 1924, AND MARCH 18, 1925, AND THE ACTS OF THE LEGISLATURE OF THE STATE OF MICHIGAN, PASSED MARCH 18, 1924, AND MARCH 18, 1925, AND THE ACTS OF THE LEGISLATURE OF THE STATE OF MICHIGAN, PASSED MARCH 18, 1924, AND MARCH 18, 1925.

I CERTIFY THAT THIS PLAT IS IN COM PLIANCE AS TO DEPTH & WIDTH OF LOTS OF SEC. 30 ACTS 172 OF P.A. OF 1924 AS AMENDED, ALSO SAME AND WATER FACILITIES ARE INSTALLED & APPROVED.

D. J. Harm
D. J. HARM, CLERK

DEDICATION

KNOW ALL MEN BY THESE PRESENTS, That we, Frederick T. Moser and Edith J. Moser, his wife the Geneva Builders, Inc., a Michigan Corporation, by Kenneth V. Leuchner, President and Ernest J. Stecker, Secretary, and Roy Rock Gratiot Development Company, Inc., a Michigan Corporation, by Roy Rock, President and William S. Rock, Secretary, as proprietors, have caused the land embraced in the annexed plat to be surveyed, laid out and platted to be known as "Gordon Rock Subdivision No. 1" of lot 1 of Beste Subdivision of part of the N.E. Fr 1/4 of Sec. 16, T 1 N., R 13 E. City of St. Clair Shores, Macomb Co., Michigan, and that the streets as shown on said plat are hereby dedicated to the use of the public, and that the easements shown on said plat are hereby reserved for the use of the Public Utilities, or for the use of specific utilities as thereon noted, subject to the regulation and control of the use thereof by the local governmental authorities, and that no permanent structures are to be erected within the lines of said easements.

Signed and Sealed in the Presence of:

Opheelia Herman
OPHELIA HERMAN

Leonard S. Herman
LEONARD S. HERMAN

Carl R. Gams
CARL R. GAMS

Martha B. Stewart
MARTHA B. STEWART

Carl R. Gams
CARL R. GAMS

Celia Cohen
CELIA COHEN

Frederick T. Moser (L.S.)
Frederick T. Moser

Edith J. Moser (L.S.)
Edith J. Moser
GENEVA BUILDERS, INC.

Kenneth V. Leuchner (L.S.)
Kenneth V. Leuchner President

Ernest J. Stecker (L.S.)
Ernest J. Stecker SECRETARY
ROCK GRATIOT DEVELOPMENT CO., INC.

Roy Rock (L.S.)
Roy Rock President

William S. Rock (L.S.)
William S. Rock Secretary

STATE OF MICHIGAN } SS.
COUNTY OF Wayne }
On this 19th day of July, 1954, county, personally came the above named persons known to me to be the persons who executed their free act and deed.
My Commission expires: June 7, 1959

STATE OF MICHIGAN } SS.
COUNTY OF Wayne }
On this 19th day of July, 1954, county, appeared Kenneth V. Leuchner, each by me duly sworn did say that the Geneva Builders, Inc., a Michigan Corporation of said corporation by authority of its Ernest J. Stecker acknowledged said instrument. Corporation has no corporate seal.
My Commission expires: June 7, 1959

STATE OF MICHIGAN } SS.
COUNTY OF Wayne }
On this 19th day of July, 1954, county, appeared Roy Rock and William S. Rock, each by me duly sworn did say that they are the proprietors of said corporation by authority of its Roy Rock acknowledged said instrument to Corporation has no corporate seal.
My Commission expires: June 7, 1959

SURVEYORS CERTIFICATE

I hereby certify that the plat hereon delineated is a correct one and that permanent metal monuments consisting of bars no less than one-half inch in diameter and 48 inches in length encased in a concrete cylinder at least 4 inches in diameter and 48 inches in depth have been placed at points marked thus (O) as thereon shown at all angles in the boundaries of the land platted, at all the intersections of the lines of streets, and at the intersections of the lines of streets with the boundaries of the plat as shown on said plat.

John J. Bridges
John J. Bridges,
Registered Land Surveyor, No. 3779.

CERTIFICATE OF APPROVAL BY COUNTY BOARD

This plat was approved on the 19th day of July, 1954, by the Macomb County Plat Board.

Clason Burr
Clason Burr - Register of Deeds

Albert A. Wagner
Albert A. Wagner - County Clerk

Frank E. Lohr
Frank E. Lohr - County Drain Commissioner

CERTIFICATE OF MUNICIPAL APPROVAL

This plat was approved by the Council of the City of St. Clair Shores at a meeting held on July 19, 1954.

D. J. Harm
D. J. Harm, Clerk.

The land embraced in the annexed plat Subdivision of part of the N. E. Fr 1/4, Macomb Co., Michigan, is described 16, and thence extending N. 89° - 58' E. beginning of this description and thence 110.0 feet; thence S. 0° - 33' E. 602.0 feet beginning.

Approved by the City of St. Clair Shores
MAY 1954
W. R. Blaker
W. R. Blaker, Clerk

1 F. 06

L. 12
P. 7

1926 H. R. O'MARA (C.E.)

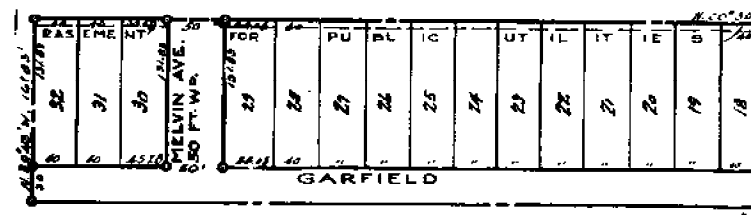
41
11-1926
J. R. Henry

9969

BIEBER'S SUBDIVISION
 OF PART OF THE S.E. 1/4 OF N.W. 1/4 SEC. 16 T. 135 E.
VILLAGE OF ROSEVILLE, MACOMB CO. MICHIGAN

SCALE 1" = 100 FEET.

H. R. O'MARA
Reg. Civil Eng.
Holtzway, Mich.



Note: All dimensions are in feet and decimals thereof.

KNOW ALL MEN BY THESE PRESENTS: That we *Frankly J. J. J. J.*
and *Joseph H. J. J. J.*
 have owned the
 land embraced in the annexed plat to be surveyed, laid out and
 platted, to be known as "BIEBER'S SUBDIVISION" of part of the 3/4
 of 1/4, Sec. 16, T. 135, R. 135 E., Village of Roseville, Macomb Co.,
 Michigan, and that the streets and alleys as shown on said plat
 are hereby dedicated to the use of the public.

Signed and Sealed in Presence
 of;
Raymond A. J. J. (L. S.)
Joseph H. J. J. (L. S.)
 _____ (L. S.)
 _____ (L. S.)
 _____ (L. S.)
 _____ (L. S.)

STATE OF MICHIGAN
 COUNTY OF *Macomb*
 On this *13th* day of *October*, 1926, before me, a
 Notary Public in and for said county, personally came the above
 named *Frankly J. J. J. J.* and *Joseph H. J. J. J.*

STATE OF MICHIGAN
COUNTY OF MACOMB

On this 9th day of October, 1926, before me, a
Notary Public in and for said county, personally came the above
named James B. Macomber & Charles W. Decker

known to me to be the persons who executed the above dedication,
and acknowledged the same to be their free act and deed.

Raymond H. Hamer
Notary Public for Co., Mich.

My Commission expires May 3, 1928

DESCRIPTION OF LAND RELATED

The land embraced in the entered plat of BIEBER'S SUBDIVISION of
part of the Sec. 16, Sec. 15, T1N, R13E, Village of Roseville,
Macomb Co., Michigan, is described as follows:
Beginning at a point on the E. & W. 1/4 line of Sec. 16, T1N, R13E, 1/4
Village of Roseville, Macomb Co., Mich. which is West a distance of
161.85 ft. from the center of Sec. 16, T1N, R13E, Thence N. 00°
30' W. a distance of 134.55 ft. Thence N. 89° 43' W. a distance of
161.83 ft. Thence S. 00° 30' E. a distance of 134.56 ft. Thence
East a distance of 161.83 ft. to the point of beginning.

ENGINEER'S CERTIFICATE

I hereby certify that the plat herein delineated is a correct one
and that permanent metal monuments of not less than one inch in
diameter and fifteen inches in length set in concrete bases at
least four inches in diameter and forty-eight inches in depth have
been placed at points marked thus (o) as thereon shown at all angles
in the boundaries of the land platted, at all the intersections of
streets, intersections of alleys, or of streets and alleys, and at the
intersections of streets and alleys with the boundaries of the plat
as shown on said plat.

Richard M. Mays
Registered Civil Engineer

CERTIFICATE OF MUNICIPAL APPROVAL

This plat was approved by the Village Commission of the Village of
Roseville at a meeting held Monday Sept. 27, 1926

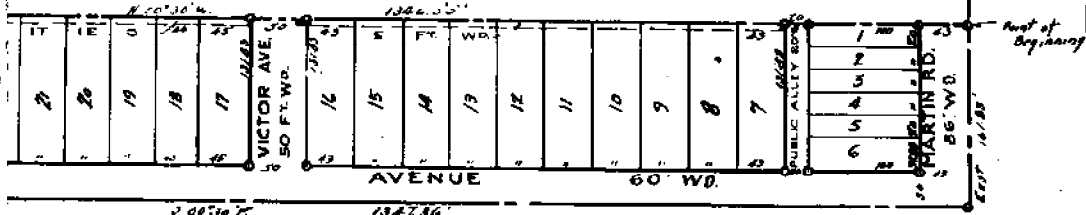
Harry R. DeLong
Clerk

This is to certify that the above plat was approved by the
Village Commission of the Village of Roseville at a meeting held
on the 27th day of September, 1926, and that the same has been
recorded in the entered instrument here to be paid FIVE YEARS
after to the date of this date, according to the records of this Office.

Richard M. Mays
Registered Civil Engineer

REGISTRAR'S OFFICE
County of Macomb, Mich.
Received for Record this 9th day
of October, A.D. 1926, at
10 o'clock P.M. and Recorded
in Liber 12 of Plats
on Page 17
Richard M. Mays

This plat was approved by the County of Macomb
on Oct 26, 1926
Charles J. Thompson
County Clerk



17-061

L.7
P.31

1924 W. J. LEHNER No. 123

SCHRAM & GINLEY SUBDIVISION

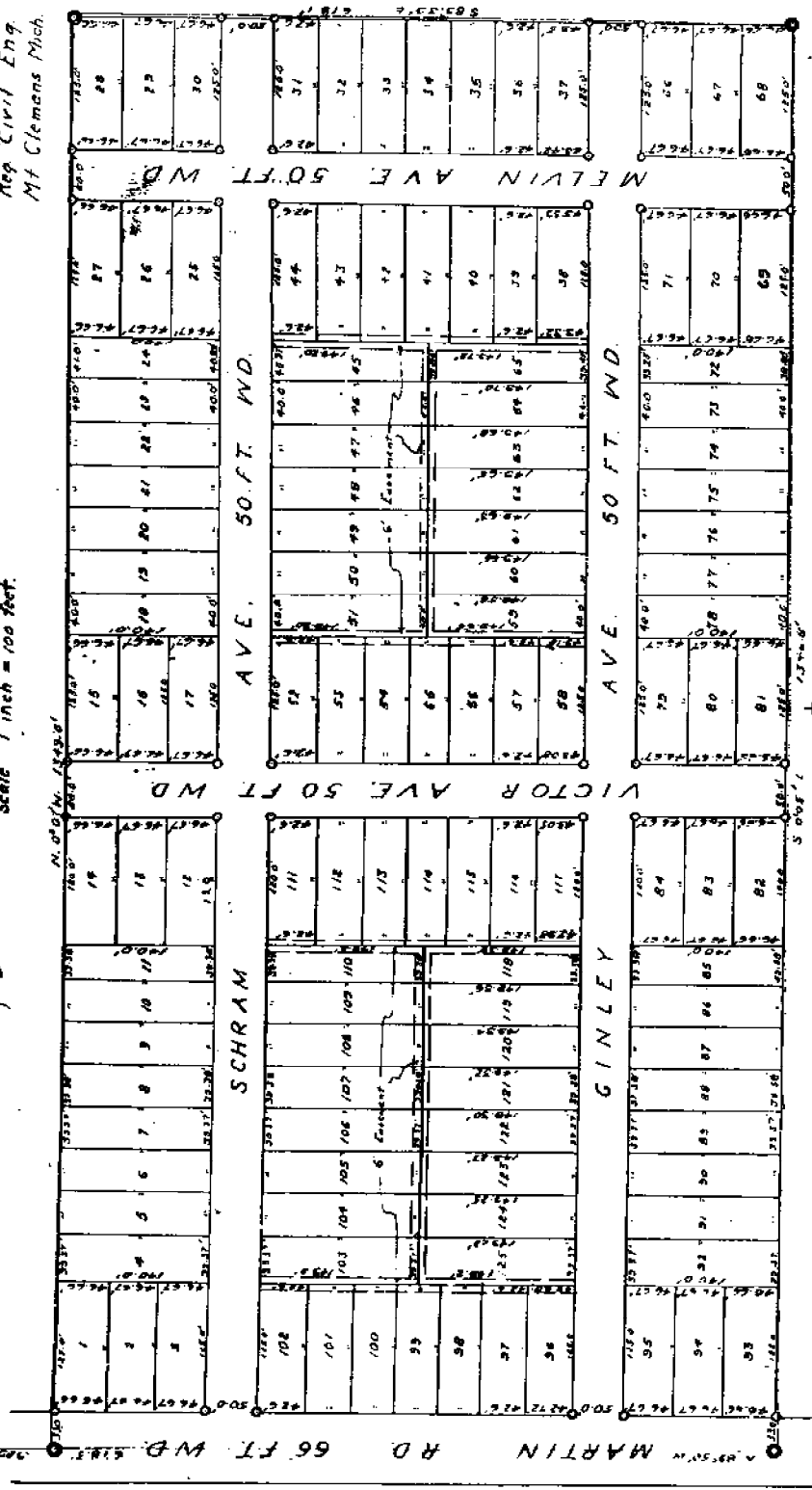
E. 1/4 OF THE SW. 1/4 OF THE N.W. 1/4 OF SEC 16 T.19.N. R.13.E.
ERIN TWP. MACOMB CO. MICHIGAN

July 12-1924
W. J. Lehner

Walter J. Lehner
Reg. Civil Eng.
Mt. Clemens Mich.

Scale 1 inch = 100 feet.

7-31





know all men by these presents, that Sebastian Schram, & Anso Schram, his wife, Thomas Gunley, & Marie Gunley, his wife, as Proprietors and Citizens Savers of McClellan Mich. a Mich. Corp. by M. McGill Vice pres. and Secy. and Robert Douglas, Secy. of the said McClellan Mich. a Mich. Corp. do hereby certify that the following is a true and correct copy of the original plat of the NW 1/4 of Sec. 16, T19N, R15E, Erin Twp. Macomb Co. Mich.

Sebastian Schram
Thomas Gunley
Marie Gunley
Robert Douglas
M. McGill
John A. Walker

This is to certify that the above plat was approved by the Township Board of the Township of Erin, Macomb County, Michigan, at a meeting held this 3rd day of July, 1893

Wm. H. ...
 Township Clerk

Description of Land Platted
 The Land embraced in the annexed Plat of Sections & Quarters Subdivided of the NW 1/4 of Sec. 16, T19N, R15E, Erin Twp. Macomb Co. Michigan, is described as follows: Commencing at the NW corner of 1/4 Sec. 16 T19N, R15E, Erin Twp. Macomb Co. Mich., thence S 89° 50' E 674.85 ft. to the point of beginning, thence N 0° 07' W 1349.0 ft. thence S 89° 39' E 679.1 ft. thence S 0° 05' E 1349.0 ft. thence N 89° 50' W 678.3 ft. to the point of beginning.

State of Michigan
 County of Washtenaw
 On this 3 day of July, 1893
 before me, a Notary Public in and for said County, personally appearing the above named Sebastian Schram, & Anso Schram, his wife, Thomas Gunley, & Marie Gunley, his wife, Robert Douglas, Secy. of the said McClellan Mich. a Mich. Corp. to me to be the persons who executed the above deed, and being by me duly sworn, they depose and say that the same is to be the true and correct copy of the original plat of the NW 1/4 of Sec. 16, T19N, R15E, Erin Twp. Macomb Co. Mich.

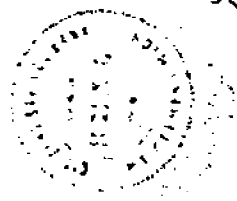
John A. Walker
 Notary Public
 Dep. 28. 1901

I hereby certify that the plat hereon delineated is a correct one and that the same is a true and correct copy of the original plat of the NW 1/4 of Sec. 16, T19N, R15E, Erin Twp. Macomb Co. Mich., as shown shown at all angles in the boundaries of the land platted and of all intersections of streets or roads and alleys.

John A. Walker
 Registered Civil Engineer

COUNTY TREASURER CERTIFICATE
 This is to certify that there are on file in the office of the County Treasurer of Washtenaw County, Michigan, a true and correct copy of the original plat of the NW 1/4 of Sec. 16, T19N, R15E, Erin Twp. Macomb Co. Mich., as shown shown at all angles in the boundaries of the land platted and of all intersections of streets or roads and alleys.

John A. Walker
 County Treasurer



AD 1923 before me
 a Notary Public in and for said County appeared
 to me personally known who
 I have duly sworn did say that they are the true and correct copy of the original plat of the NW 1/4 of Sec. 16, T19N, R15E, Erin Twp. Macomb Co. Mich., as shown shown at all angles in the boundaries of the land platted and of all intersections of streets or roads and alleys.

The Commission expires August 19, 1916 (M. McGill, Notary Public Macomb Co)

1925

H. R. O'MARA (C.C.)

GREENGARDEN SUBDIVISION NO. 4.

OF PART OF THE SE 1/4 OF SEC. 16 T. 1 N. E. 13 E.

LAKE TWP. MACOMB CO. MICH.

April 2-1925
E. B. Green

2418

1298	1299	1300	1301	1302	1303	1304	1305	1306	1307	1308	1309	1310	1311	1312	1313	1314	1315	1316	1317	1318	1319	1320	1321	1322	1323	1324	1325	1326	1327	1328	1329	1330	1331	1332	1333	1334	1335	1336	1337	1338	1339	1340	1341	1342	1343	1344	1345	1346	1347	1348	1349	1350	1351	1352	1353	1354	1355	1356	1357	1358	1359	1360	1361	1362	1363	1364	1365	1366	1367	1368	1369	1370	1371	1372	1373	1374	1375	1376	1377	1378	1379	1380	1381	1382	1383	1384	1385	1386	1387	1388	1389	1390	1391	1392	1393	1394	1395	1396	1397	1398	1399	1400	1401	1402	1403	1404	1405	1406	1407	1408	1409	1410	1411	1412	1413	1414	1415	1416	1417	1418	1419	1420	1421	1422	1423	1424	1425	1426	1427	1428	1429	1430	1431	1432	1433	1434	1435	1436	1437	1438	1439	1440	1441	1442	1443	1444	1445	1446	1447	1448	1449	1450	1451	1452	1453	1454	1455	1456	1457	1458	1459	1460	1461	1462	1463	1464	1465	1466	1467	1468	1469	1470	1471	1472	1473	1474	1475	1476	1477	1478	1479	1480	1481	1482	1483	1484	1485	1486	1487	1488	1489	1490	1491	1492	1493	1494	1495	1496	1497	1498	1499	1500	1501	1502	1503	1504	1505	1506	1507	1508	1509	1510	1511	1512	1513	1514	1515	1516	1517	1518	1519	1520	1521	1522	1523	1524	1525	1526	1527	1528	1529	1530	1531	1532	1533	1534	1535	1536	1537	1538	1539	1540	1541	1542	1543	1544	1545	1546	1547	1548	1549	1550	1551	1552	1553	1554	1555	1556	1557	1558	1559	1560	1561	1562	1563	1564	1565	1566	1567	1568	1569	1570	1571	1572	1573	1574	1575	1576	1577	1578	1579	1580	1581	1582	1583	1584	1585	1586	1587	1588	1589	1590	1591	1592	1593	1594	1595	1596	1597	1598	1599	1600	1601	1602	1603	1604	1605	1606	1607	1608	1609	1610	1611	1612	1613	1614	1615	1616	1617	1618	1619	1620	1621	1622	1623	1624	1625	1626	1627	1628	1629	1630	1631	1632	1633	1634	1635	1636	1637	1638	1639	1640	1641	1642	1643	1644	1645	1646	1647	1648	1649	1650	1651	1652	1653	1654	1655	1656	1657	1658	1659	1660	1661	1662	1663	1664	1665	1666	1667	1668	1669	1670	1671	1672	1673	1674	1675	1676	1677	1678	1679	1680	1681	1682	1683	1684	1685	1686	1687	1688	1689	1690	1691	1692	1693	1694	1695	1696	1697	1698	1699	1700	1701	1702	1703	1704	1705	1706	1707	1708	1709	1710	1711	1712	1713	1714	1715	1716	1717	1718	1719	1720	1721	1722	1723	1724	1725	1726	1727	1728	1729	1730	1731	1732	1733	1734	1735	1736	1737	1738	1739	1740	1741	1742	1743	1744	1745	1746	1747	1748	1749	1750	1751	1752	1753	1754	1755	1756	1757	1758	1759	1760	1761	1762	1763	1764	1765	1766	1767	1768	1769	1770	1771	1772	1773	1774	1775	1776	1777	1778	1779	1780	1781	1782	1783	1784	1785	1786	1787	1788	1789	1790	1791	1792	1793	1794	1795	1796	1797	1798	1799	1800	1801	1802	1803	1804	1805	1806	1807	1808	1809	1810	1811	1812	1813	1814	1815	1816	1817	1818	1819	1820	1821	1822	1823	1824	1825	1826	1827	1828	1829	1830	1831	1832	1833	1834	1835	1836	1837	1838	1839	1840	1841	1842	1843	1844	1845	1846	1847	1848	1849	1850	1851	1852	1853	1854	1855	1856	1857	1858	1859	1860	1861	1862	1863	1864	1865	1866	1867	1868	1869	1870	1871	1872	1873	1874	1875	1876	1877	1878	1879	1880	1881	1882	1883	1884	1885	1886	1887	1888	1889	1890	1891	1892	1893	1894	1895	1896	1897	1898	1899	1900	1901	1902	1903	1904	1905	1906	1907	1908	1909	1910	1911	1912	1913	1914	1915	1916	1917	1918	1919	1920	1921	1922	1923	1924	1925	1926	1927	1928	1929	1930	1931	1932	1933	1934	1935	1936	1937	1938	1939	1940	1941	1942	1943	1944	1945	1946	1947	1948	1949	1950	1951	1952	1953	1954	1955	1956	1957	1958	1959	1960	1961	1962	1963	1964	1965	1966	1967	1968	1969	1970	1971	1972	1973	1974	1975	1976	1977	1978	1979	1980	1981	1982	1983	1984	1985	1986	1987	1988	1989	1990	1991	1992	1993	1994	1995	1996	1997	1998	1999	2000	2001	2002	2003	2004	2005	2006	2007	2008	2009	2010	2011	2012	2013	2014	2015	2016	2017	2018	2019	2020	2021	2022	2023	2024	2025	2026	2027	2028	2029	2030	2031	2032	2033	2034	2035	2036	2037	2038	2039	2040	2041	2042	2043	2044	2045	2046	2047	2048	2049	2050	2051	2052	2053	2054	2055	2056	2057	2058	2059	2060	2061	2062	2063	2064	2065	2066	2067	2068	2069	2070	2071	2072	2073	2074	2075	2076	2077	2078	2079	2080	2081	2082	2083	2084	2085	2086	2087	2088	2089	2090	2091	2092	2093	2094	2095	2096	2097	2098	2099	2100	2101	2102	2103	2104	2105	2106	2107	2108	2109	2110	2111	2112	2113	2114	2115	2116	2117	2118	2119	2120	2121	2122	2123	2124	2125	2126	2127	2128	2129	2130	2131	2132	2133	2134	2135	2136	2137	2138	2139	2140	2141	2142	2143	2144	2145	2146	2147	2148	2149	2150	2151	2152	2153	2154	2155	2156	2157	2158	2159	2160	2161	2162	2163	2164	2165	2166	2167	2168	2169	2170	2171	2172	2173	2174	2175	2176	2177	2178	2179	2180	2181	2182	2183	2184	2185	2186	2187	2188	2189	2190	2191	2192	2193	2194	2195	2196	2197	2198	2199	2200	2201	2202	2203	2204	2205	2206	2207	2208	2209	2210	2211	2212	2213	2214	2215	2216	2217	2218	2219	2220	2221	2222	2223	2224	2225	2226	2227	2228	2229	2230	2231	2232	2233	2234	2235	2236	2237	2238	2239	2240	2241	2242	2243	2244	2245	2246	2247	2248	2249	2250	2251	2252	2253	2254	2255	2256	2257	2258	2259	2260	2261	2262	2263	2264	2265	2266	2267	2268	2269	2270	2271	2272	2273	2274	2275	2276	2277	2278	2279	2280	2281	2282	2283	2284	2285	2286	2287	2288	2289	2290	2291	2292	2293	2294	2295	2296	2297	2298	2299	2300	2301	2302	2303	2304	2305	2306	2307	2308	2309	2310	2311	2312	2313	2314	2315	2316	2317	2318	2319	2320	2321	2322	2323	2324	2325	2326	2327	2328	2329	2330	2331	2332	2333	2334	2335	2336	2337	2338	2339	2340	2341	2342	2343	2344	2345	2346	2347	2348	2349	2350	2351	2352	2353	2354	2355	2356	2357	2358	2359	2360	2361	2362	2363	2364	2365	2366	2367	2368	2369	2370	2371	2372	2373	2374	2375	2376	2377	2378	2379	2380	2381	2382	2383	2384	2385	2386	2387	2388	2389	2390	2391	2392	2393	2394	2395	2396	2397	2398	2399	2400	2401	2402	2403	2404	2405	2406	2407	2408	2409	2410	2411	2412	2413	2414	2415	2416	2417	2418	2419	2420	2421	2422	2423	2424	2425	2426	2427	2428	2429	2430	2431	2432	2433	2434	2435	2436	2437	2438	2439	2440	2441	2442	2443	2444	2445	2446	2447	2448	2449	2450	2451	2452	2453	2454	2455	2456	2457	2458	2459	2460	2461	2462	2463	2464	2465	2466	2467	2468	2469	2470	2471	2472	2473	2474	2475	2476	2477	2478	2479	2480	2481	2482	2483	2484	2485	2486	2487	2488	2489	2490	2491	2492	2493	2494	2495	2496	2497	2498	2499	2500	2501	2502	2503	2504	2505	2506	2507	2508	2509	2510	2511	2512	2513	2514	2515	2516	2517	2518	2519	2520	2521	2522	2523	2524	2525	2526	2527	2528	2529	2530	2531	2532	2533	2534	2535	2536	2537	2538	2539	2540	2541	2542	2543	2544	2545	2546	2547	2548	2549	2550	2551	2552	2553	2554	2555	2556	2557	2558	2559	2560	2561	2562	2563	2564	2565	2566	2567	2568	2569	2570	2571	2572	2573	2574	2575	2576	2577	2578	2579	2580	2581	2582	2583	2584	2585	2586	2587	2588	2589	2590	2591	2592	2593	2594	2595	2596	2597	2598	2599	2600	2601	2602	2603	2604	2605	2606	2607	2608	2609	2610	2611	2612	2613	2614	2615	2616	2617	2618	2619	2620	2621	2622	2623	2624	2625	2626	2627	2628	2629	2630	2631	2632	2633</
------	------	------	------	------	------	------	------	------	------	------	------	------	------	------	------	------	------	------	------	------	------	------	------	------	------	------	------	------	------	------	------	------	------	------	------	------	------	------	------	------	------	------	------	------	------	------	------	------	------	------	------	------	------	------	------	------	------	------	------	------	------	------	------	------	------	------	------	------	------	------	------	------	------	------	------	------	------	------	------	------	------	------	------	------	------	------	------	------	------	------	------	------	------	------	------	------	------	------	------	------	------	------	------	------	------	------	------	------	------	------	------	------	------	------	------	------	------	------	------	------	------	------	------	------	------	------	------	------	------	------	------	------	------	------	------	------	------	------	------	------	------	------	------	------	------	------	------	------	------	------	------	------	------	------	------	------	------	------	------	------	------	------	------	------	------	------	------	------	------	------	------	------	------	------	------	------	------	------	------	------	------	------	------	------	------	------	------	------	------	------	------	------	------	------	------	------	------	------	------	------	------	------	------	------	------	------	------	------	------	------	------	------	------	------	------	------	------	------	------	------	------	------	------	------	------	------	------	------	------	------	------	------	------	------	------	------	------	------	------	------	------	------	------	------	------	------	------	------	------	------	------	------	------	------	------	------	------	------	------	------	------	------	------	------	------	------	------	------	------	------	------	------	------	------	------	------	------	------	------	------	------	------	------	------	------	------	------	------	------	------	------	------	------	------	------	------	------	------	------	------	------	------	------	------	------	------	------	------	------	------	------	------	------	------	------	------	------	------	------	------	------	------	------	------	------	------	------	------	------	------	------	------	------	------	------	------	------	------	------	------	------	------	------	------	------	------	------	------	------	------	------	------	------	------	------	------	------	------	------	------	------	------	------	------	------	------	------	------	------	------	------	------	------	------	------	------	------	------	------	------	------	------	------	------	------	------	------	------	------	------	------	------	------	------	------	------	------	------	------	------	------	------	------	------	------	------	------	------	------	------	------	------	------	------	------	------	------	------	------	------	------	------	------	------	------	------	------	------	------	------	------	------	------	------	------	------	------	------	------	------	------	------	------	------	------	------	------	------	------	------	------	------	------	------	------	------	------	------	------	------	------	------	------	------	------	------	------	------	------	------	------	------	------	------	------	------	------	------	------	------	------	------	------	------	------	------	------	------	------	------	------	------	------	------	------	------	------	------	------	------	------	------	------	------	------	------	------	------	------	------	------	------	------	------	------	------	------	------	------	------	------	------	------	------	------	------	------	------	------	------	------	------	------	------	------	------	------	------	------	------	------	------	------	------	------	------	------	------	------	------	------	------	------	------	------	------	------	------	------	------	------	------	------	------	------	------	------	------	------	------	------	------	------	------	------	------	------	------	------	------	------	------	------	------	------	------	------	------	------	------	------	------	------	------	------	------	------	------	------	------	------	------	------	------	------	------	------	------	------	------	------	------	------	------	------	------	------	------	------	------	------	------	------	------	------	------	------	------	------	------	------	------	------	------	------	------	------	------	------	------	------	------	------	------	------	------	------	------	------	------	------	------	------	------	------	------	------	------	------	------	------	------	------	------	------	------	------	------	------	------	------	------	------	------	------	------	------	------	------	------	------	------	------	------	------	------	------	------	------	------	------	------	------	------	------	------	------	------	------	------	------	------	------	------	------	------	------	------	------	------	------	------	------	------	------	------	------	------	------	------	------	------	------	------	------	------	------	------	------	------	------	------	------	------	------	------	------	------	------	------	------	------	------	------	------	------	------	------	------	------	------	------	------	------	------	------	------	------	------	------	------	------	------	------	------	------	------	------	------	------	------	------	------	------	------	------	------	------	------	------	------	------	------	------	------	------	------	------	------	------	------	------	------	------	------	------	------	------	------	------	------	------	------	------	------	------	------	------	------	------	------	------	------	------	------	------	------	------	------	------	------	------	------	------	------	------	------	------	------	------	------	------	------	------	------	------	------	------	------	------	------	------	------	------	------	------	------	------	------	------	------	------	------	------	------	------	------	------	------	------	------	------	------	------	------	------	------	------	------	------	------	------	------	------	------	------	------	------	------	------	------	------	------	------	------	------	------	------	------	------	------	------	------	------	------	------	------	------	------	------	------	------	------	------	------	------	------	------	------	------	------	------	------	------	------	------	------	------	------	------	------	------	------	------	------	------	------	------	------	------	------	------	------	------	------	------	------	------	------	------	------	------	------	------	------	------	------	------	------	------	------	------	------	------	------	------	------	------	------	------	------	------	------	------	------	------	------	------	------	------	------	------	------	------	------	------	------	------	------	------	------	------	------	------	------	------	------	------	------	------	------	------	------	------	------	------	------	------	------	------	------	------	------	------	------	------	------	------	------	------	------	------	------	------	------	------	------	------	------	------	------	------	------	------	------	------	------	------	------	------	------	------	------	------	------	------	------	------	------	------	------	------	------	------	------	------	------	------	------	------	------	------	------	------	------	------	------	------	------	------	------	------	------	------	------	------	------	------	------	------	------	------	------	------	------	------	------	------	------	------	------	------	------	------	------	------	------	------	------	------	------	------	------	------	------	------	------	------	------	------	------	------	------	------	------	------	------	------	------	------	------	------	------	------	------	------	------	------	------	------	------	------	------	------	------	------	------	------	------	------	------	------	------	------	------	------	------	------	------	------	------	------	------	------	------	------	------	------	------	------	------	------	------	------	------	------	------	------	------	------	------	------	------	------	------	------	------	------	------	------	------	------	------	------	------	------	------	------	------	------	------	------	------	------	------	------	------	------	------	------	------	------	------	------	------	------	------	------	------	------	------	------	------	------	------	------	------	------	------	------	------	------	------	------	------	------	------	------	------	------	------	------	------	------	------	------	------	------	------	------	------	------	------	------	------	------	------	------	------	------	------	------	------	------	------	------	------	------	------	------	------	------	------	------	------	------	------	------	------	------	------	------	------	------	------	------	------	------	------	------	------	------	------	------	------	------	------	------	------	------	------	------	------	------	------	------	------	------	------	------	------	------	------	------	------	------	------	------	------	------	------	------	------	------	------	------	------	------	------	------	------	------	------	------	------	------	------	------	------	------	------	------	------	------	------	------	------	------	------	------	------	------	------	------	--------

ENGINEER'S CERTIFICATE

I hereby certify that the plat hereon delineated is a correct one and that permanent monuments consisting of 2" iron gas pipe 18" long have been placed at all points marked thus (0) as thereon shown at all angles in the boundaries of the land platted and at all intersections of streets.

REGISTERED CIVIL ENGINEER

CERTIFICATE NO. TO TOWNSHIP BOARD.

This plat was approved by the Township Board of Lake Twp. at a meeting held on the _____ day of _____ 19____.

TOWNSHIP COMMISSIONER

EXHIBIT

By the Surveyor of the County of Michigan, I hereby certify that the above is a true and correct copy of the original plat on file in my office.

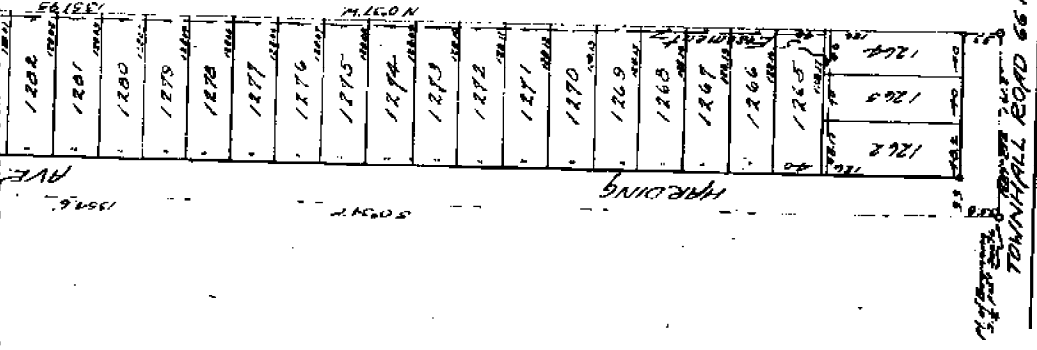
The plat was approved by the Township Board of Lake Twp. at a meeting held on the _____ day of _____ 19____.

James O. Elliott
TOWNSHIP COMMISSIONER

DESCRIPTION

The land embraced in the aforesaid plat of Green Garden subdivision No. 4 of part of the 3/4 of Sec. 16 T 1 N R 12 E Lake Twp., Macomb Co., Mich. is described as follows: Commencing at the S 1/4 post-jan. 16 Lake Twp., Macomb Co., Mich. thence N 89° 09' 12" E a distance of 131.5 feet thence N 69° 37' W a distance of 1381.95 feet thence S 89° 23' 4" E a distance of 150.9 feet thence S 89° 34' E a distance of 1354.5 feet to the point of beginning.

Surveyor General
COUNTY OF MACOMB
for the Township of Lake
Charles A. O. Wells
Surveyor General
19____



F-06

1925 W.J. LEANNER No. 123

KALFEMANN SUBDIVISION

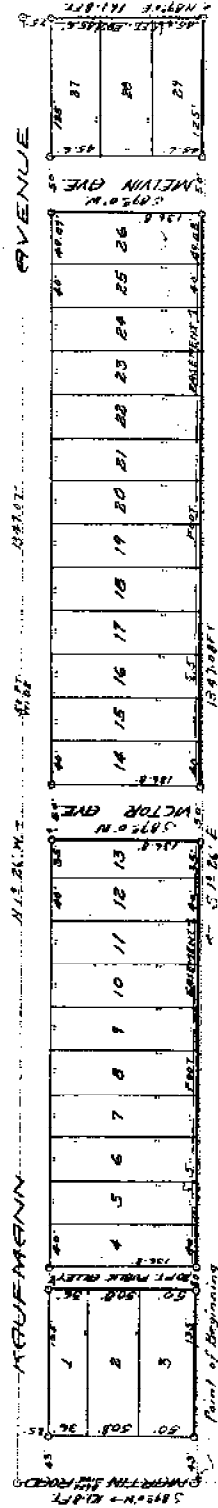
PART OF THE SE 1/4 OF THE NW 1/4 OF SEC. 16 T14R13E.
ERIN TWP. MACOMB CO. MICHIGAN

Aug 19-1925
W.J. Leanner

W.J. LEANNER REG. CE.
MOUNT CLEMENS, MICH.

SCALE
1" = 100'

6016



BEFORE ME, the undersigned authority, on this day personally appeared **Henry Kaufmann and Elisabeth Kaufmann**, his wife, as proprietors, and the **Halloway State Bank**, a Michigan Corporation, by **Adwin A. May, Cashier**, and **August A. Allen**, Vice President, as attorneys-in-fact, and they acknowledged to me that they executed the foregoing plat for the purposes and consideration therein expressed, to be known as "KALFEMANN SUBDIVISION", part of the S.E. 1/4 of the N.W. 1/4 of Sec. 16, T. 14 N. R. 13 E., Erin Twp., Macomb County, Michigan, and that the streets and alleys as shown on said plat are hereby dedicated to the use of the public.

Signed and sealed in my presence on this day 1925

Henry Kaufmann
Elisabeth Kaufmann
Adwin A. May
August A. Allen

Henry Kaufmann, J. S.

Elisabeth Kaufmann, I. S.

Adwin A. May, Cashier

August A. Allen, Vice President

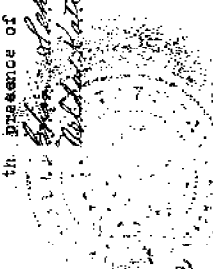
Description of Land Platted

The land embraced in the annexed plat of "KALFEMANN SUBDIVISION", part of the S.E. 1/4 of the N.W. 1/4 of Sec. 16, T. 14 N. R. 13 E., Erin Twp., Macomb County, Michigan, is described as follows:

Beginning at a point on the N. and W. 1/4 line of Sec. 16, a distance of 485.49 ft., S. 89°00' W. of the center east, thence S. 89°00' W. 161.6 ft., thence N. 1°28' W. 1347.07 ft., thence N. 89°00' E. 161.6 ft., thence S. 1°28' W. 1347.06 ft., to the point of beginning.

181
L. 9

L. 9
P. 81



Walter Hatterman
Edwin A. May
Edwin A. May

STATE OF MICHIGAN

County of *Macomb*

On this *10th* day of *August*, 1928, before me, a Notary Public in and for said County, personally came the above named Henry Kaufmann and Elsiebeth Kaufmann, his wife, known to me to be the persons who executed the above dedication, and acknowledged the same to be their free act and deed.

Henry Kaufmann
Elsiebeth Kaufmann

Notary Public, *M. A. ... Co., Mich.*

My Commission Expires *Sept. 1, 1929*

STATE OF MICHIGAN

County of *Macomb*

On this *10th* day of *August*, 1928, before me, *Walter Hatterman*, a Notary Public in and for said County appeared *Edwin A. May* and *Elsiebeth Kaufmann*, who being each by me duly sworn did say that they are the Vice President and Cashier respectively of the *Macomb State Bank*, a Michigan corporation, and that the seal affixed to said instrument is the corporate seal of said corporation and that said instrument was signed and sealed in behalf of said corporation by authority of its Board of Directors and the said *Edwin A. May* acknowledged said instrument to be the free act and deed of said corporation.

Walter Hatterman

Notary Public, *W. H. ... Co., Mich.*

My Commission Expires *Sept. 1, 1929*

This is to certify that the above plat was approved by the Township Board of the Township of *Erving*, Macomb County, Michigan, at a meeting held this *10th* day of *August*, 1928.

Edwin A. May
Township Clerk

I hereby certify that the plat herein delineated is a correct one and that permanent monuments consisting of 1/2 x 1 1/2 inch Iron Stakes have been planted at points marked "a" as thereon shown at all angles in the boundaries of the land platted and at all intersections of streets or alleys and alleys.

Walter Hatterman

Registered Civil Engineer.

Provided:

That the above plat and subdivision is hereby subjected to the following agreement and covenant which shall be observed by these proprietors herein described and their successors and assigns and the heirs, executors and administrators and assigns of them to wit:

That at no time within a period of 25 years shall any lot in said subdivision or part thereof or any building thereon be sold, rented, leased, transferred or conveyed to, nor shall the same be occupied by, excepting as domestic servants, any Negro or colored person or persons of Negro blood.

REGISTERS OFFICE
County of Macomb, Mich.

Received for Record this *10th* day of *August*, A.D. 1928, at *Macomb, Mich.*

By *Walter Hatterman* of *Macomb*

at *Macomb*

Walter Hatterman Register.

This plat was approved by the County Board of *Erving* Township, Macomb County, Michigan, on the *10th* day of *August*, 1928.

Edwin A. May
Elsiebeth Kaufmann

Walter Hatterman

Walter Hatterman Register.

COUNTY TREASURER'S RECEIPT
I hereby certify that the above described instrument was duly recorded in the office of the County Treasurer of Macomb County, Michigan, on the *10th* day of *August*, 1928.

Walter Hatterman

Walter Hatterman Register.

Walter Hatterman Register.

"STOEPPEL'S

MARTIN ROAD SUBDIVISION NO. 1"

OF N.W. 1/4 OF S.W. 1/4 OF SEC. 16 AND PART OF N.E. 1/4
OF S.E. 1/4 OF SEC. 17, T.19R.13E ERIN TWP.,
MACOMB COUNTY, MICH.

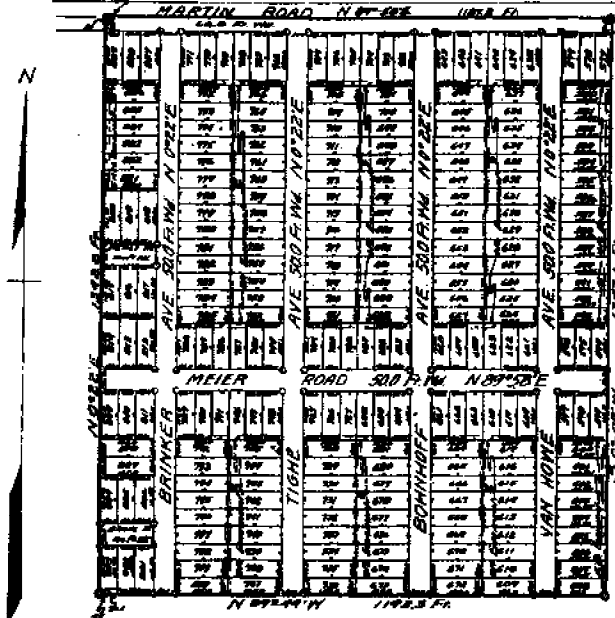
Scale - 1" = 200 FT

Examiner of Deeds

July 9, 1923
L. H. Hensell

Walter J. Lohrer
Regd. Civil Engr.
Flint, Mich.

W. 1/4 Sect. 16
T.19R.13E Erin Twp. Macomb Co. Mich.
Point of Beginning



Map drawn by the Engineer, Wm. C. ...

"STOEPPEL'S
MARTIN ROAD SUBDIV. NO. 1" of N.W. 1/4 of S.W. 1/4 of
Sec. 16 and part of N.E. 1/4 of S.E. 1/4 of Sec. 17, T.19R.13E
Erin Twp., Macomb Co., Mich.

Wm. C. ...
Charlotte Engelman

Charlotte Engelman
L.S.
L.S.
L.S.
L.S.

This map and the same plat was approved by the
County Clerk of Macomb County, Michigan

George J. ...
1923

Walter J. Lohrer
Reg. Civil Engr.

This plat was recorded by the County Clerk of Macomb
County, Michigan, on the 12th day of March, 1923

Walter J. Lohrer
Regd. Civil Engr.
Flint, Mich.

COUNTY TREASURER'S CERTIFICATE

This is to certify that there are on the List of Taxes for
the State or any individual person, and that all Taxes on same
assessed to the property herein have been paid FIVE DOLLARS
into the State Treasury, according to the records of the Office

James H. ...
J. H. ...

RECORDED OFFICE
COUNTY OF MACOMB
...
...
...

Description of Land Plotted
This land contains 112 1/2 Acres and is called "STOEPPEL'S
MARTIN ROAD SUBDIV. NO. 1" of N.W. 1/4 of S.W. 1/4 of
Sec. 16 and part of N.E. 1/4 of S.E. 1/4 of Sec. 17, T.19R.13E
Erin Twp., Macomb Co., Mich. is described as follows:
Beginning at the W. 1/4 Part of Sec. 16, T.19R.13E,
Erin Twp., Macomb Co., Mich. and thence extending
N 89° 50' E 1185.8 Ft. along the center of Martin Rd.
(so called); thence S 0° 07' W 1349.1 Ft.; thence
N 89° 49' W 1187.8 Ft.; thence N 88° 49' W 4.5 Ft.;
thence N 10° 22' E 1342.8 Ft.; thence N 89° 50' E
20 Ft. to the Point of Beginning.