

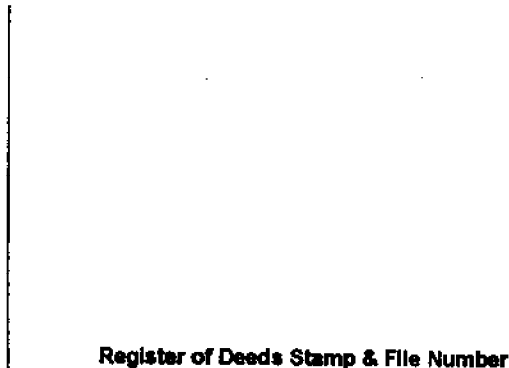
LAND CORNER RECORDATION CERTIFICATE
Filing Requirement of Act 74, Mich. P.A. 1970

For corners in

Macomb
 (County)

Located In: Erin/Lake Township Corner Code #F3

1. Public Land Survey T 1N R 13E F3
 T R
 T R
 T R
 T R
 2. Property Controlling S T R
 in Section S T R
 3. Miscellaneous S T R
 Property in Sec. S T R



4. Lot No. , Recorded Plat
 5. Private Claims

I, Craig P. Amey, in a field survey on August 7, 1995 do hereby certify that under requirements of P.A. 74, Michigan P.A. of 1970, the corner points mentioned in lines 1 and 2 above were in conformance with regulations and rules therefore as required in the current manual of survey instructions of the United States Department of the Interior, Bureau of Land Management or by a decree of a Court of Law and for that the corner points mentioned in lines 3, 4 and 5 above were in conformance with the rules of the Michigan Board of Land Surveyors or by a Decree of a Court of Law; established, re-established, monumented, re-monumented, recovered, found as expressed below.

	A	B	C	D	E	F	G	H	I	J	K	L	M
1													
2	6		5		4		3		2		1		
3					●								
4	7		8		9		10		11		12		
5													
6	18		17		16		15		14		13		
7													
8	19		20		21		22		23		24		
9													
10	30		29		28		27		26		25		
11													
12	31		32		33		34		35		36		
13													

NOTE: Not more than 4 corners, all in the same town and range, may be recorded on this certificate.

A. Description of original monument and accessories and/or subsequent restoration:

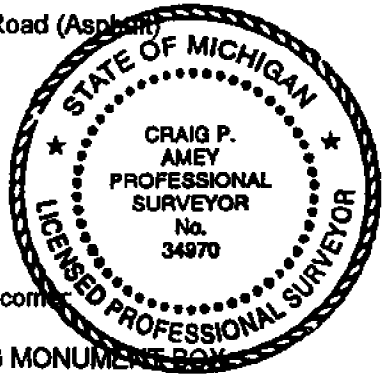
1818 GLO William Preston No witnesses remain
 1992 LCRC L5700 P478 Warren C. Avey Found 5/8" bar in a monument box

B. Description of corner evidence found and/or method applied in restoring or reestablishing corner:

Found 5/8" bar in a monument box at the intersection of southbound Gratiot Avenue and 13 Mile Road (Asphalt)

This corner verified by:

Witnesses from LCRC, L5700 P478
 ESE 47.44 PK Nail in the SE side of a utility pole
 NE 66.36 PK and shiner in the SW side of a utility pole
 E 2699.58' Southeast corner of section 4 (G3) (GLO = 40ch)
 W 2698.68' Southwest corner of section 4 (E3) (GLO = 40ch)



C. Description of monument for corner and accessories established to perpetuate locating the position of the corner:

REPLACED 5/8" IRON WITH 1/2" X 24" IRON WITH MCR CAP #34970 IN THE EXISTING MONUMENT BOX
 AZ 58° 67.27 Set PK and MCR tag in the NW face of a utility pole
 AZ 150° 51.35 Found a Chiseled "X" in the north face of an aluminum light pole
 AZ 317° 72.62 Top of a hydrant
 AZ 238° 96.10 Top of a hydrant

The selected location is accepted by me and is generally accepted by professional surveyors as the best available evidence of the position of the original corner.

ACCEPTED BY THE MACOMB COUNTY SURVEY PEER GROUP AS THE OFFICIAL CORNER UNDER MICHIGAN PUBLIC ACT 345 OF 1990 AT A MEETING HELD ON 8-15-95
William E. Soderberg
 WILLIAM E. SODERBERG, P.S., CHAIRMAN

Signed by C.P.A. Date 12-15-95
 Surveyor's Michigan License No. 34970

LAND CORNER RECORDATION CERTIFICATE
Filing Requirement of Act 74, Mich. P.A. 1970

RECORDED IN MACOMB COUNTY
RECORDS AT: 8:35A. M.

DEC 30 1992

Edna M. Hall
CLERK - REGISTER OF DEEDS
MACOMB COUNTY, MICHIGAN

Register of Deeds Stamp & File Number

For corners in

Macomb
(County)

Located In: Sec. 9 Corner Code 77
Roseville

- 1. Public Land Survey T 1N. R 13E. F-3
T R
T R
T R
- 2. Property Controlling S T R
in Section S T R
- 3. Miscellaneous S T R
Property in Sec. S T R
- 4. Lot No. , Recorded Plat
- 5. Private Claims

	A	B	C	D	E	F	G	H	I	J	K	L	M
2	6		5		4		3		2		1		
3					●								
4	7		8		9		10		11		12		
5													
6	18		17		16		15		14		13		
7													
8	19		20		21		22		23		24		
9													
10	30		29		28		27		26		25		
11													
12	31		32		33		34		35		36		
13													

I, Warren C. Avey, in a field survey on September 9, 1992, do hereby certify that under requirements of P.A. 74, Michigan P.A. of 1970, the corner points mentioned in lines 1 and 2 above were in conformance with regulations and rules therefore as required in the current manual of survey instructions of the United States Department of the Interior, Bureau of Land Management or by a decree of a Court of Law and/or that the corner points mentioned in lines 3, 4 and 5 above were in conformance with the rules of the Michigan Board of Land Surveyors or by a Decree of a Court of Law; established, re-established, monumented, re-monumented, recovered, found as expressed below:

NOTE: Not more than 4 corners, all in the same town and range, may be recorded on this certificate.

A. Description of original monument and accessories and/or subsequent restoration:

B. Description of corner evidence found and/or method applied in restoring or reestablishing corner:

F-3 Found 5/8" Bar in Mon. Box.

C. Description of monument for corner and accessories established to perpetuate locating the position of the corner:

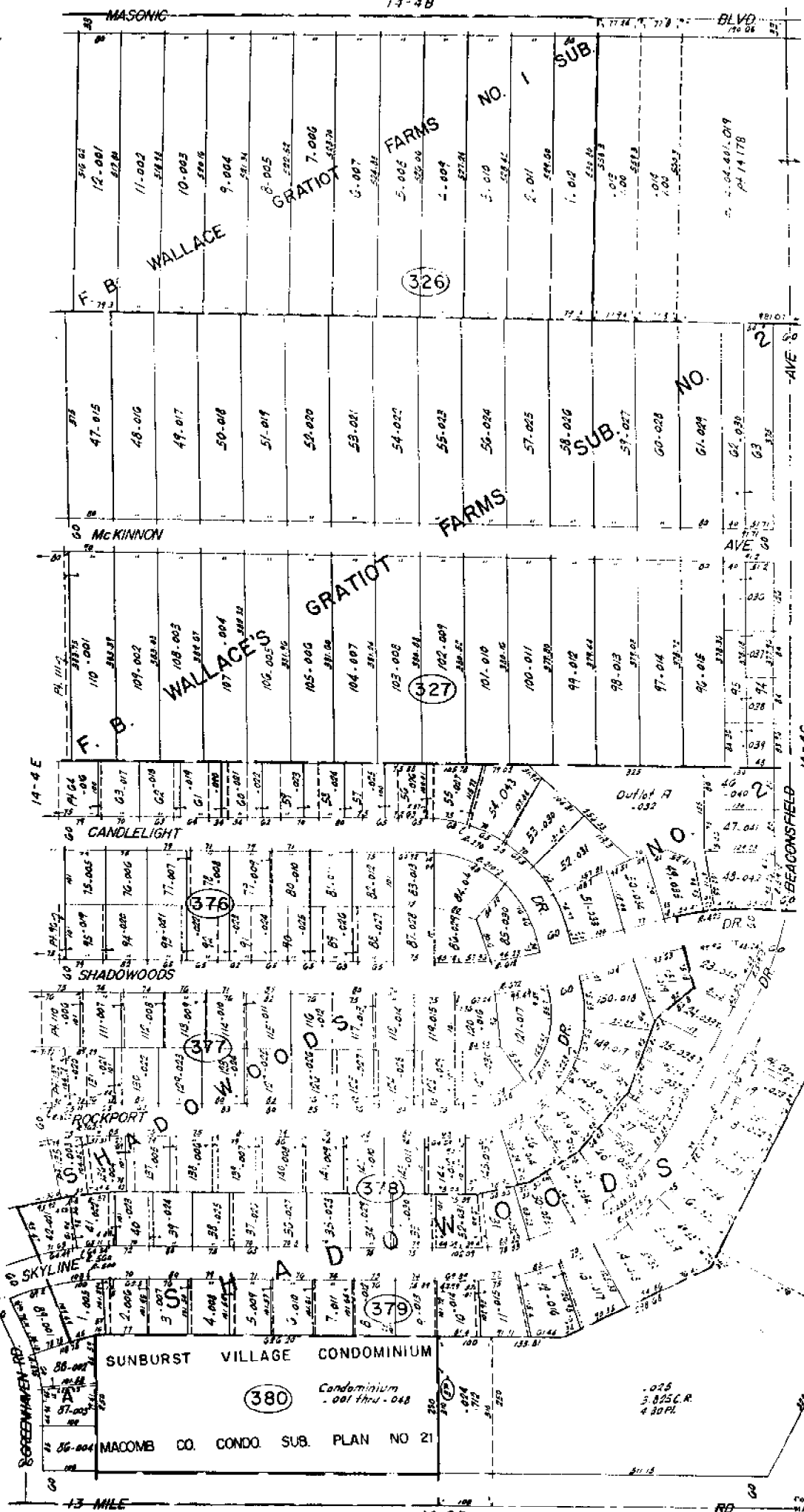
- 47.44' E.S.E. to p.k. nail, S. side util. pole.
- 66.86' N.E. to p.k. nail in shiner, S.W. side util. pole.
- 95.96' S.W. to c/l top of hydrant.
- 149.66' N.W. to c/l top of hydrant.



Signed by Warren C. Avey
Surveyor's Michigan License No. 30076

Date Sept. 9, 1992

14-4B



"B" VENETIAN ESTATES SUB.

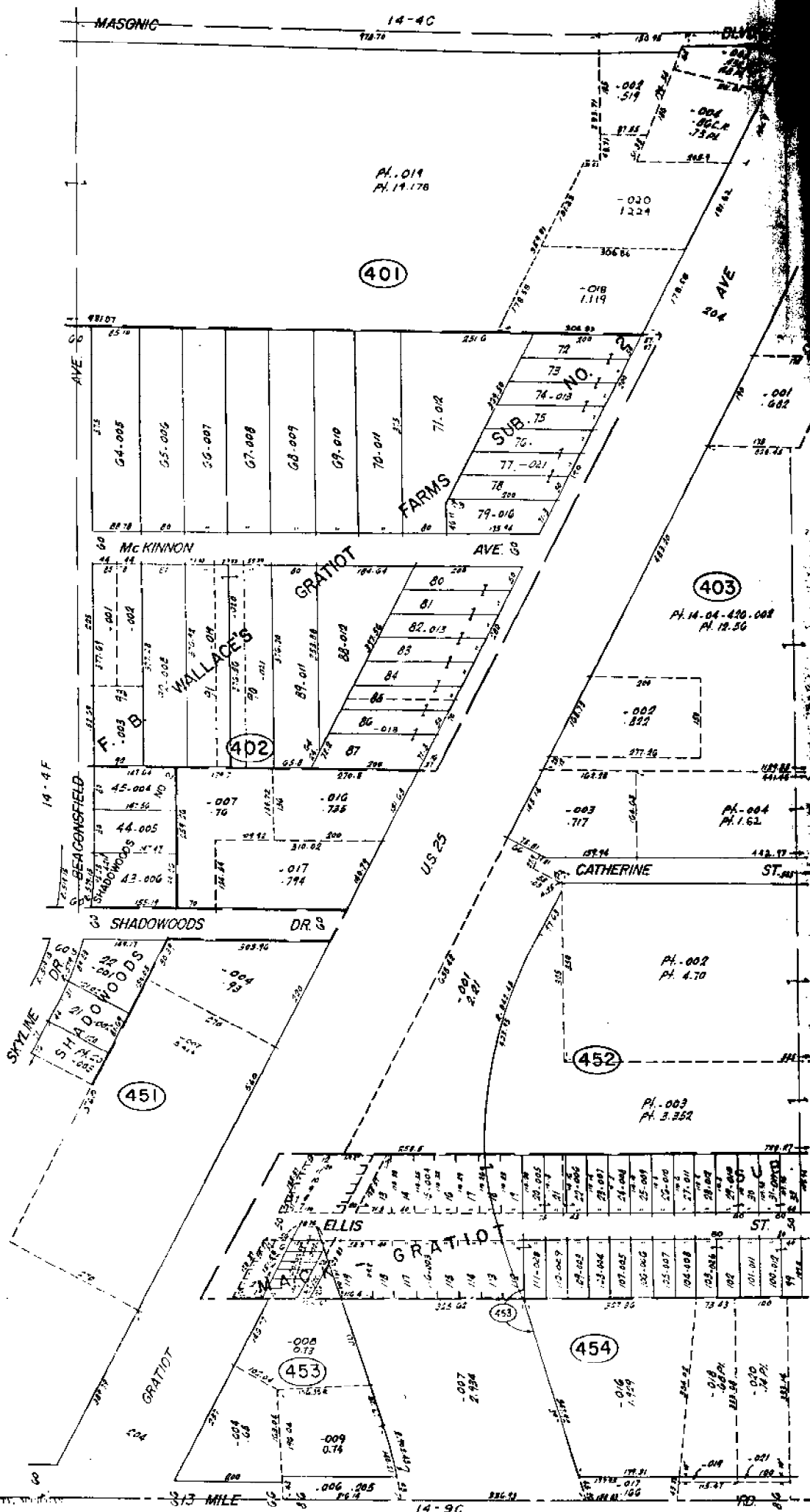
14-4E

Copyright 1972
MACOMB COUNTY, MICHIGAN

ROSEVILLE

E 1/2 SW 1/4 SEC. 4 T.1N. R.13E.

SCALE 1" = 100'
1746
14-4F



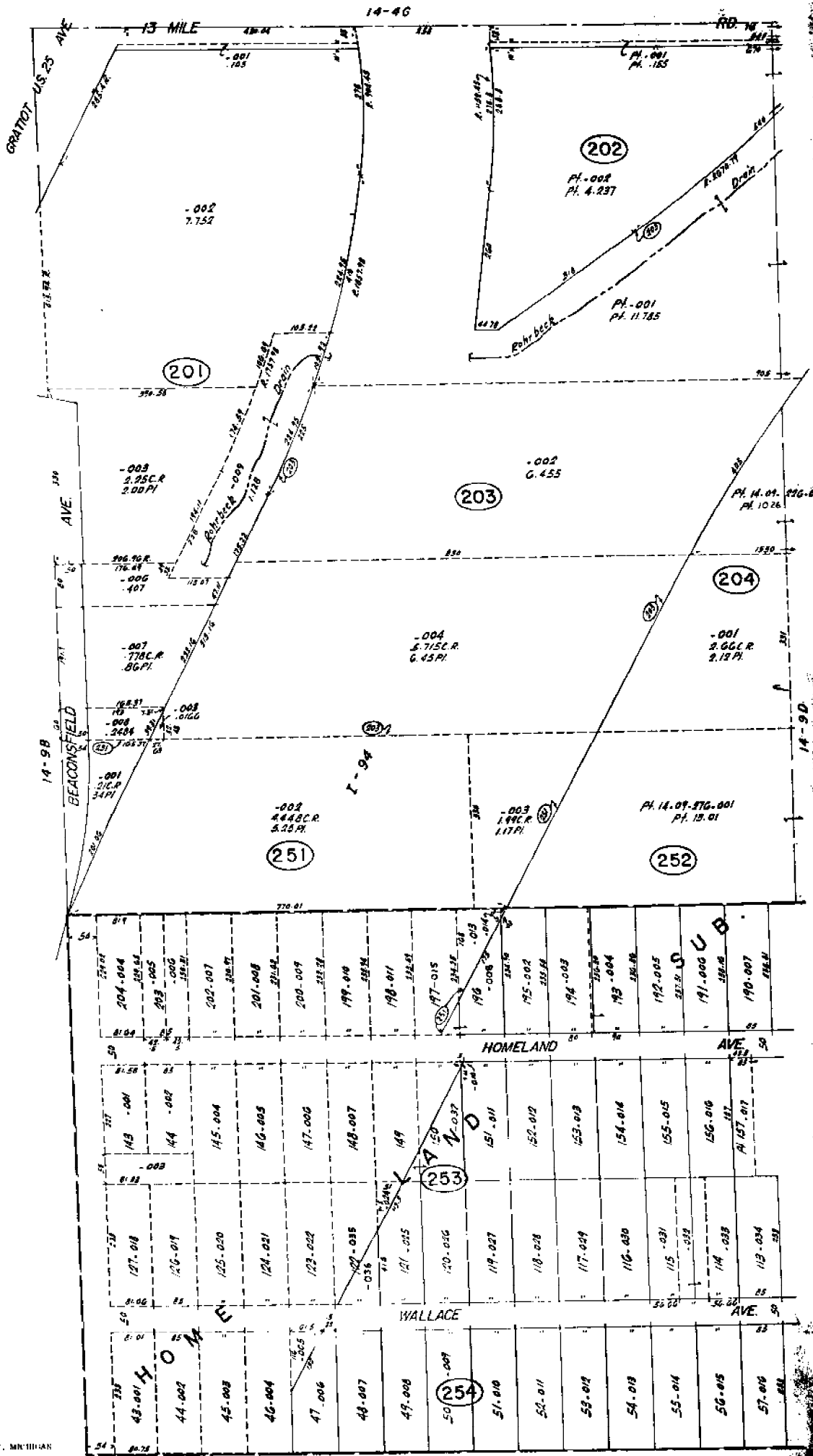
GRAT

REV. 11-74
REV. 11-71
REV. 11-74
REV. 8-78
REV. 11-74
REV. 11-72
COUNTY, MICH.

REV. 11-74
REV. 11-74
REV. 8-78
REV. 11-74

SCALE: 1" = 100'
1747
4-4G

ROSEVILLE
W 1/2 SE 1/4 SEC. 4 T.1N. R.13E.



REV. 12-79
 REV. 12-78
 REV. 11-74
 REV. 11-72
 REV. 6-72

Copyright 1972
 SAGINAW COUNTY, MICHIGAN

SCALE 1" = 100'
1783
 14-9C

14-96
ROSEVILLE
 W. 1/2 NE. 1/4 SEC. 9 T. 13E.