

LAND CORNER RECORDATION CERTIFICATE
Filing Requirement of Act 74, Mich. P.A. 1970

LIBER **6523** PAGE **952**
C150805

For corners in

MACOMB

Located In: **ERINLAKE TWP.**

Corner Code #

County

- | | | |
|------------------------------------|---|-------------|
| 1. Public Land Survey | T <u>IN</u> R <u>13E</u> | <u>F-1</u> |
| | T <u> </u> R <u> </u> | <u> </u> |
| | T <u> </u> R <u> </u> | <u> </u> |
| | T <u> </u> R <u> </u> | <u> </u> |
| 2. Property Controlling in Section | S <u> </u> T <u> </u> R <u> </u> | <u> </u> |
| | S <u> </u> T <u> </u> R <u> </u> | <u> </u> |
| 3. Miscellaneous Property in Sec. | S <u> </u> T <u> </u> R <u> </u> | <u> </u> |
| | S <u> </u> T <u> </u> R <u> </u> | <u> </u> |

4. Lot No. _____, Recorded Plat _____
 5. Private Claims _____

94 DEC -9 PM 2:50

MICH DEEDS
 CITY, MI

Register of Deeds Stamp & File Number

	A	B	C	D	E	F	G	H	I	J	K	L	M
2	6	6	4	3	2	1							
3													
4	7	8	9	10	11	12							
5													
6	18	17	16	16	14	12							
7													
8	19	20	21	22	23	24							
9													
10	30	29	28	27	26	25							
11													
12	31	32	33	34	35	36							
13													

I, STEVEN E. DUNN, in a field survey on APRIL 4, 19 94, do hereby certify that under requirements of P.A. 74, Michigan P.A. of 1970, the corner points mentioned in lines 1 and 2 above were in conformance with regulations and rules therefore as required in the current manual of survey instructions of the United States Department of the Interior, Bureau of Land Management or by a decree of a Court of Law and /or that the corner points mentioned in lines 3, 4 and 5 above were in conformance with the rules of the Michigan Board of Land Surveyors or by a Decree of a Court of Law; established, re-established, monumented, re-monumented, recovered, found as expressed below:

NOTE: Not more than 4 corners, all in the same town and range, may be recorded on this certificate.

A. Description of original monument and accessories and/or subsequent restoration:

GLO POST - NO EVIDENCE OF ORIGINAL CORNER FOUND
 GLO ORIGINAL SURVEY PERFORMED BY PRESTON 2-18-1818

ACCEPTED BY THE MACOMB COUNTY SURVEY PEER GROUP AS THE OFFICIAL CORNER UNDER MICHIGAN PUBLIC ACT 345 OF 1880 AT A MEETING HELD ON 11-15-94
William E. Soderberg
 WILLIAM E. SODERBERG, P.S., CHAIRMAN

<u>L.C.R.C.</u>	<u>NAME AND NUMBER</u>	<u>DESCRIPTION</u>	<u>DATE</u>
L. 5483 P. 426	ROGER J. STECKER, #30103	FOUND 1/2" IRON ROD IN MONUMENT BOX	JUNE 22, 1992
<u>PLATS</u>			
L. 3 P. 161	HARMON FARMS		JULY 26, 1919
L. 7 P. 97	GRATIOT MASONIC PARK		JULY 19, 1924

B. Description of corner evidence found and/or method applied in restoring or reestablishing corner:

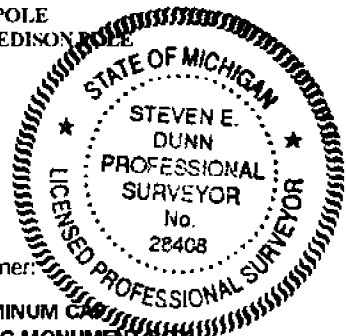
F-1 QUARTER CORNER COMMON TO F-13 CLINTON TOWNSHIP
 FOUND 1/2" IRON ROD IN MONUMENT BOX IN ASPHALT PAVEMENT. VERIFIED LOCATION BY COMPARING FOUND WITNESSES OF ABOVE L.C.R.C.'s AND M-DOT DISTANCES TO THE SECTION.

FOUND WITNESS TIES

L. 5483, P. 426	AZ 51° 51.91'	SQUARE HEADED NAIL IN WEST FACE OF DETROIT EDISON POLE
	AZ 330° 51.30'	PK NAIL AND M.C.R.C. CAP IN EAST FACE OF DETROIT EDISON POLE
	AZ 231° 53.71'	PK NAIL AND M.C.R.C. CAP IN NORTHWEST FACE OF DETROIT EDISON POLE
	AZ 138° 54.17'	FACE OF 4" STEEL WALK SIGNAL POST

FIELD MEASUREMENTS AND RECORDED DISTANCES

F-1 TO G-1	2672.53' (M)	2672.80' "GRATIOT MASONIC PARK" (R)	L. 7, P. 97	2640.00' G.L.O. (R)
F-1 TO E-1	2699.14' (M)	2700.60' "HARMON FARMS" (R)	L. 3, P. 161	2640.00' G.L.O. (R)



C. Description of monument for corner and accessories established to perpetuate locating the position of the corner:

E-1 T.1N., R.13E. I REPLACED 1/2" IRON ROD WITH 3/4" x 24" IRON ROD WITH 2" DIAMETER ALUMINUM CAP STAMPED "MACOMB COUNTY MONUMENT MI. ACT 345 #28408" IN AN EXISTING MONUMENT BOX IN ASPHALT PAVEMENT.

WITNESSES

AZ 51° 51.91'	SQUARE HEADED NAIL IN WEST FACE OF DETROIT EDISON POLE
AZ 330° 51.30'	SET PK NAIL AND M.C.R. WITNESS TAG IN EAST FACE OF DETROIT EDISON POLE
AZ 231° 53.71'	PK NAIL AND M.C.R.C. CAP IN NORTHWEST FACE OF DETROIT EDISON POLE
AZ 138° 54.17'	FACE OF 4" STEEL WALK SIGNAL POST

THE SELECTED LOCATION IS ACCEPTED BY ME AND IS GENERALLY ACCEPTED BY PROFESSIONAL SURVEYORS AS THE BEST AVAILABLE EVIDENCE OF THE POSITION OF THE ORIGINAL CORNER.

Signed by Steven E. Dunn Date Nov. 16, 1994
 Surveyor's Michigan License No. 28408

LAND CORNER RECORDATION CERTIFICATE
Filing Requirement of Act 74, Mich. P.A. 1970

For corners in

MACOMB

(County)

Located In: **ERTH LAKE TWP.**

Corner Code #

11/15/94

1. Public Land Survey	T <u>1N</u> R <u>13E</u>	<u>F-1</u>
	T _____ R _____	_____
	T _____ R _____	_____
	T _____ R _____	_____
2. Property Controlling in Section	S _____ T _____ R _____	_____
	S _____ T _____ R _____	_____
3. Miscellaneous Property in Sec.	S _____ T _____ R _____	_____
	S _____ T _____ R _____	_____

Register of Deeds Stamp & File Number

4. Lot No. _____, Recorded Plat _____
 5. Private Claims _____

	A	B	C	D	E	F	G	H	I	J	K	L	M
2	6		6		4		3		2				
3													
4	7		8		9		10		11		12		
5													
6	18		17		16		15		14		13		
7													
8	19		20		21		22		23		24		
9													
10	30		29		28		27		26		25		
11													
12	31		32		33		34		35		36		
13													

STEVE E. DUNN, in a field survey on APRIL 4, 1994, do hereby certify that under requirements of P.A. 74, Michigan P.A. of 1970, the corner points mentioned in lines 1 and 2 above were in conformance with regulations and rules therefore as required in the current manual of survey instructions of the United States Department of the Interior, Bureau of Land Management or by a decree of a Court of Law and /or that the corner points mentioned in lines 3, 4 and 5 above were in conformance with the rules of the Michigan Board of Land Surveyors or by a Decree of a Court of Law; established, re-established, monumented, re-monumented, recovered, found as expressed below:

NOTE: Not more than 4 corners, all in the same town and range, may be recorded on this certificate.

A. Description of original monument and accessories and/or subsequent restoration:

**G.L.O. POST - NO EVIDENCE OF ORIGINAL CORNER FOUND
 G.L.O. ORIGINAL SURVEY PERFORMED BY PRESTON 2-18-1818**

<u>L.C.R.C.</u>	<u>NAME AND NUMBER</u>	<u>DESCRIPTION</u>	<u>DATE</u>
L. 5483 P. 426	ROGER J. STECKER, #30103	FOUND 1/2" IRON ROD IN MONUMENT BOX	JUNE 22, 1992
<u>PLATS</u>			
L. 3 P. 161	HARMON FARMS		JULY 26, 1919
L. 7 P. 97	GRATIOT MASONIC PARK		JULY 19, 1924

B. Description of corner evidence found and/or method applied in restoring or reestablishing corner:

**F-1 QUARTER CORNER COMMON TO F-13 CLINTON TOWNSHIP
 FOUND 1/2" IRON ROD IN MONUMENT BOX IN ASPHALT PAVEMENT. VERIFIED LOCATION BY COMPARING FOUND WITNESSES OF ABOVE L.C.R.C.'s AND M-DOT DISTANCES TO THE SECTION.**

FOUND WITNESSES

L. 5483, P. 426	AZ. 51° 51.91'	SQUARE HEADED NAIL IN WEST FACE OF DETROIT EDISON POLE
	AZ. 330° 51.30'	PK. NAIL AND M.C.R.C. CAP IN EAST FACE OF DETROIT EDISON POLE
	AZ. 231° 53.71'	PK. NAIL AND M.C.R.C. CAP IN NORTHWEST FACE OF DETROIT EDISON POLE
	AZ. 138° 54.17'	FACE OF 4" STEEL WALK SIGNAL POST

FIELD MEASUREMENTS AND RECORDED DISTANCES

F-1 TO G-1	2672.53' (M)	2672.80' "GRATIOT MASONIC PARK" (R)	L. 7, P. 97	2640.00' G.L.O. (R)
F-1 TO E-1	2699.14' (M)	2700.60' "HARMON FARMS" (R)	L. 3, P. 161	2640.00' G.L.O. (R)

C. Description of monument for corner and accessories established to perpetuate locating the position of the corner:

E-1 T.1N, R.13E 1 REPLACED 1/2" IRON ROD WITH 3/4" x 24" IRON ROD WITH 2" DIAMETER ALUMINUM CAP STAMPED "MACOMB COUNTY MONUMENT MI. ACT 345 #28408" IN AN EXISTING MONUMENT BOX IN ASPHALT PAVEMENT.

WITNESSES

AZ. 51° 51.91'	SQUARE HEADED NAIL IN WEST FACE OF DETROIT EDISON POLE
AZ. 330° 51.30'	PK. NAIL AND M.C.R.C. CAP IN EAST FACE OF DETROIT EDISON POLE
AZ. 231° 53.71'	PK. NAIL AND M.C.R.C. CAP IN NORTHWEST FACE OF DETROIT EDISON POLE
AZ. 138° 54.17'	FACE OF 4" STEEL WALK SIGNAL POST

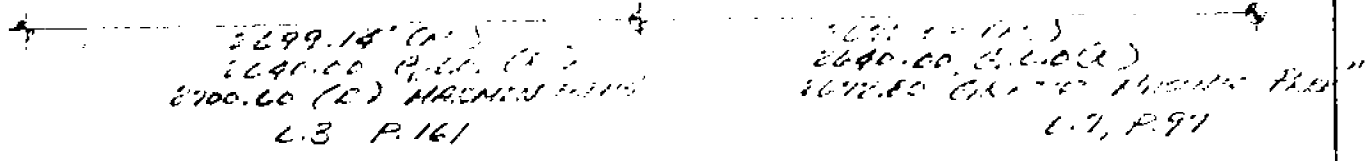
THE SELECTED LOCATION IS ACCEPTED BY ME AND IS GENERALLY ACCEPTED BY PROFESSIONAL SURVEYORS AS THE BEST AVAILABLE EVIDENCE OF THE POSITION OF THE ORIGINAL CORNER.

Signed by _____ Date _____
 Surveyor's Michigan License No. 28408

22-141 50 SHEETS
22-142 100 SHEETS
22-144 200 SHEETS



F1



2299.18' (L)
2240.00' (L) P. 161 (L)
2700.00' (L) H. 161 (L)
L.3 P. 161

2299.18' (L)
2240.00' (L) P. 161 (L)
2700.00' (L) H. 161 (L)
L.7, P. 97

LIBER 05483M-126

11731053

LAND CORNER RECORDATION CERTIFICATE

Filing Requirement of Act 74, Mich. P.A. 1970

RECORDED IN MACOMB COUNTY RECORDS AT: 10:42A

JUN 22 1992

Edna [Signature] CLERK - REGISTER OF DEEDS MACOMB COUNTY, MICHIGAN

Register of Deeds Stamp & File Number

For corners in

MACOMB (County)	Located In:	Corner Code #11
1. Public Land Survey	T 2N R 13E	F-11
	T R	F-13
CLINTON TWP	T R	
	T R	
2. Property Controlling in Section 33	S T R	
	S T R	
3. Miscellaneous Property in Sec.	S T R	
	S T R	

4. Lot No. _____, Recorded Plat _____
5. Private Claims _____

I, ROGER J. STECKER, in a field survey on JUNE 19, 1992, do hereby certify that under requirements of P.A. 74, Michigan P.A. of 1970, the corner points mentioned in lines 1 and 2 above were in conformance with regulations and rules therefore as required in the current manual of survey instructions of the United States Department of the Interior, Bureau of Land Management or by a decree of a Court of Law and/or that the corner points mentioned in lines 3, 4 and 5 above were in conformance with the rules of the Michigan Board of Land Surveyors or by a Decree of a Court of Law; established, re-established, monumented, re-monumented, recovered, found as expressed below:

NOTE: Not more than 4 corners, all in the same town and range, may be recorded on this certificate.

	A	B	C	D	E	F	G	H	I	J	K	L	M
2	6		5		4		3		2		1		
3													
4	7		8		9		10		11		12		
5													
6	10		17		16		15		14		13		
7													
8	19		20		21		22		23		24		
9													
10	30		29		28		27		26		25		
11													
12	31		32		33		34		35		36		
13													

A. Description of original monument and accessories and/or subsequent restoration:

B. Description of corner evidence found and/or method applied in restoring or reestablishing corner:

- F-11 FOUND 5/8" SOLID ROD IN MONUMENT BOX
- F-13 FOUND 1/2" IRON IN MONUMENT BOX

C. Description of monument for corner and accessories established to perpetuate locating the position of the corner:

- F-11 N.E. 39.81 FT. FACE OF TRAFFIC LIGHT SUPPORT POLE
N.W. 57.04 FT. FACE OF 4" STEEL WALK SIGNAL POST
S.W. 57.06 FT. P.K. NAIL IN D.E. POLE
S.E. 61.47 FT. P.K. NAIL IN D.E. POLE
- F-13 N.E. 51.91 FT. SQUARE HEADED NAIL IN D.E. POLE
N.W. 51.30 FT. P.K. NAIL AND M.C.R.C. CAP IN D.E. POLE
S.W. 53.71 P.K. NAIL AND M.C.R.C. CAP IN D.E. POLE
S.E. 54.17 FACE OF 4" STEEL WALK SIGNAL POST

Signed by [Signature]
ROGER J. STECKER, LLS
Surveyor's Michigan License No. 30103

Date 6/22/92

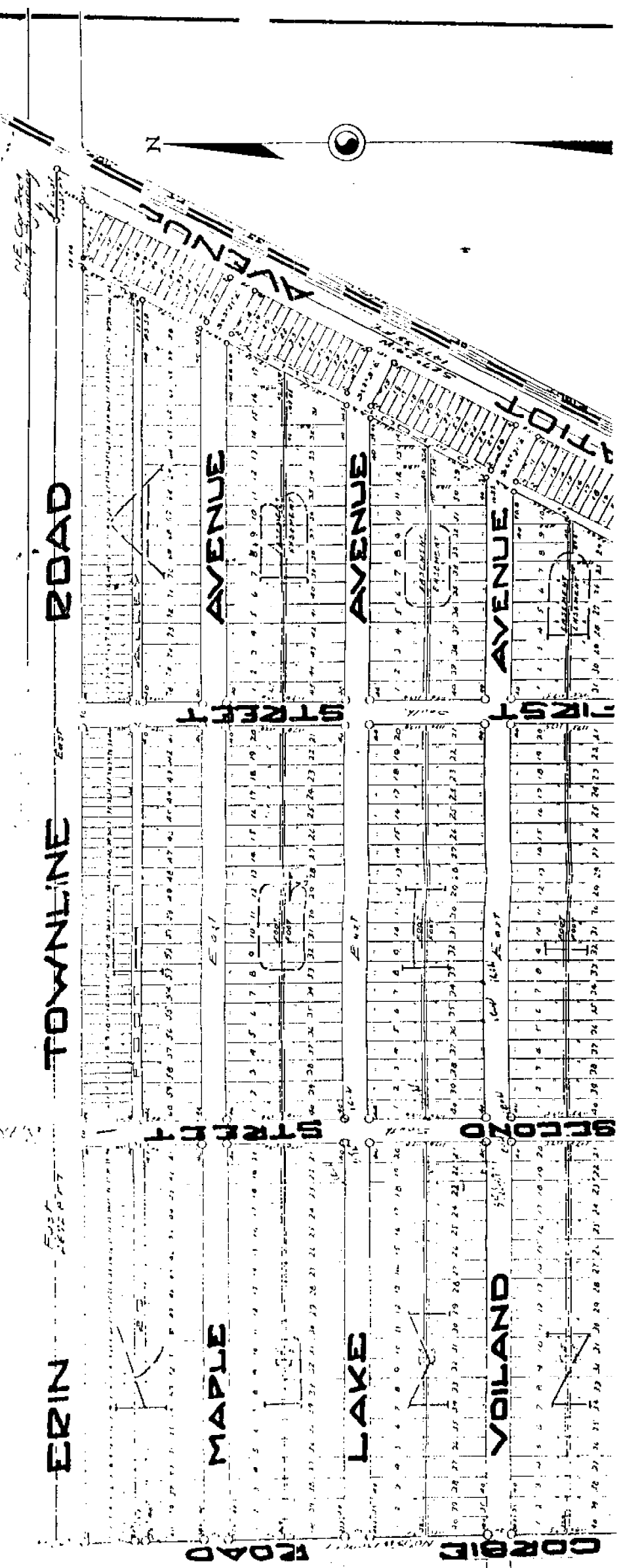
01712

GRATIOT MASONIC PARK
 A SUBDIVISION OF PART OF THE NW/4 OF SEC 4 AND PART OF THE NW/4 OF SEC 13 IN RISE
 ERIN TWP. MACOMB CO. MICHIGAN

SCALE
 1" = 200'

WALTER J. LEHNER, REGISTERED
 M.T. CLEMENS, MICHIGAN

L. 7
 D 97



July 16-1924

T. 1 N. R. 13 E. Mer. Mich.

225 6	227 5	229 4	231 3	233 2	235 1
224	228	232	236	240	
229 7	235 8	241 9	247 10	253 11	12
225	229	233	237	241	
222 18	225 17	228 16	231 15	234 14	13
226	230	234	238	242	
222 19	226 20	230 21	234 22	238 23	24
227	231	235	239	243	
222 30	227 29	231 28	235 27	239 26	25
227	231	235	239	243	
227 31	228 32	232 33	236 34	240 35	36
227	231	235	239	243	

219 219 219

T. 2 N. R. 13 E. Mer. Mich.

246 6	246 5	247 4	247 3	247 2	247 1	247
245	245	245	245	245	245	
250 7	254 8	258 9	262 10	266 11	270 12	
250	254	258	262	266	270	
248 18	252 17	256 16	260 15	264 14	268 13	
252	256	260	264	268	272	
248 19	252 20	256 21	260 22	264 23	268 24	
252	256	260	264	268	272	
248 30	261 29	263 28	265 27	267 26	269 25	274
261	263	265	267	269	271	
248 31	260 32	262 33	264 34	266 35	268 36	276
260	262	264	266	268	270	

Town 1 North Range 13 East

Aug 12 86 20 6

Aug 12 84 0 6

No public lands East of this corner

North Boundary

East

- 6 58 B. Oak 24 in diam
- 19.00 Marsh
- 33.30 Soft marsh
- 36.00 Marsh
- 41.00 Made 7/ Sec. cor. on a willow in diam
- 40.50 Soft marsh
- 43.62 W.C. 24 in diam
- 10.00 Made cor. for sections 5, 6, 31, 32 on a Kerner tree 3 in diam
Land 1st half mile 1st rate last 1/2 mile
2nd rate part dry Timber N.W. Oak
Elm. Middle White Kerner tree etc.

East

- 40.00 Made 7/ Sec. cor. on a Hickory in diam
- 46.00 W.C. 30 inches diam
- 10.00 Made cor. for sections 11, 12, 33, 34 on a Sycamore 10 inches diam
Land level and dry 2nd rate Timber
N. Oak Spruce Poplar Birch Sugar etc
Wood 7th Spruce etc.

- 46.00 Made 1/2 mile cor. on an Elm 18 in diam
- 49.00 Spruce 14 in diam
- 10.00 Sit post for sections 24, 33, 34.

East

from post which a Birch 6 in diam
bears N 15 W 11 the dist also a Birch in
diam bears N 11 E 16 the dist - Land
2nd rate level and dry Timber N. Oak

Town North Range 13 East

Sugar Poplar Lynn 10 Hudgth Spruce

14.13 Buck 16 in diam
 20.00 Run 4 lbs cone S.E
 110.00 Made 7/8 mile con on a Buck 10 in diam
 10.00 Set post for cor of Sections 2, 3, 34 & 35
 pole which a Buck 11 in diam bears
 N 53 E 17 lbs dist also on Elm 24 in
 East bears N 5 W 31 lbs distant
 Land first 1/2 mile good 2nd rate
 last half 5th rate Timber Buck Sugar
 W Oak Poplar B. Oak & Hudgth Spruce

20.15 W Oak 18 in diam
 30.00 Intersected Private claim N. 123 - in the
 Set post for cor of Sections 2 & 35
 pole which a B. Oak 10 in diam
 bears N 77 E 4 lbs dist also a
 Lynn 7 in diam bears N 52 E 7 lbs
 dist Land dry good 2nd rate Timber
 Buck B. Oak Poplar &c

West Berryland

North of the first Meridian of the Territory
of Michigan

12.34 Poplar 36 inches diameter
 40.00 Set post for cor of 74 Section four
 which a Sugar tree 13 inches diam
 bears South 7 lbs distant
 118.00 Sycamore 36 in diam
 10.00 Set mile post for cor of sections
25 & 36 pole which a B. Oak 10 in
 diam bears S 77 E 10 lbs distant
 also a Lynn 10 in diam bears N 35
 W 20 lbs dist Land first half