

LAND CORNER RECORDATION CERTIFICATE
Filing Requirement of Act 74, Mich. P.A. 1970

For corners in

Macomb Located In: Erin/Lake Township Corner Code #E8
 (County)

1. Public Land Survey T 1N R 13E E8
 T _____ R _____
 T _____ R _____
 T _____ R _____

2. Property Controlling S _____ T _____ R _____
 in Section S _____ T _____ R _____

3. Miscellaneous S _____ T _____ R _____
 Property in Sec. S _____ T _____ R _____

Register of Deeds Stamp & File Number

4. Lot No. _____, Recorded Plat _____
 5. Private Claims _____

I, **Craig P. Amey**, in a field survey on **August 8, 1995** do hereby certify that under requirements of P.A. 74, Michigan P.A. of 1970, the corner points mentioned in lines 1 and 2 above were in conformance with regulations and rules therefore as required in the current manual of survey instructions of the United States Department of the Interior, Bureau of Land Management or by a decree of a Court of Law and for that the corner points mentioned in lines 3, 4 and 5 above were in conformance with the rules of the Michigan Board of Land Surveyors or by a Decree of a Court of Law; established, re-established, monumented, re-monumented, recovered, found as expressed below:

NOTE: Not more than 4 corners, all in the same town and range, may be recorded on this certificate.

	A	B	C	D	E	F	G	H	I	J	K	L	M
1													
2	6		5		4		3		2		1		
3													
4	7		8		9		10		11		12		
5													
6	18		17		16		15		14		13		
7													
8	19		20		21		22		23		24		
9													
10	30		29		28		27		26		25		
11													
12	31		32		33		34		35		36		
13													

A. Description of original monument and accessories and/or subsequent restoration:
1818 GLO Wooden post Willam Preston No witnesses remain

B. Description of corner evidence found and/or method applied in restoring or reestablishing corner:
Found PK at the intersection of the centerlines of Kelly Avenue and Frazho Road.
 Corner verified by:
 Matched tie distances to a monument at the southeast corner of Huron Street and Frazho Road, part of "Catlin Sub'n" as recorded in Liber 36, Page 19.
 Matched tie distances to a monument at the northeasterly corner of "Salem Park Subd'n" as recorded in Liber 28, Page 19.



C. Description of monument for corner and accessories established to perpetuate locating the position of the corner:

- SET A 3/4" X 24" IRON WITH MCR CAP #34970 IN A NEW MONUMENT BOX
- AZ 320° 76.60' PK and tag #30092 in the northeast face of a 14" Box Elder
- AZ 15° 58.38' PK and tag #30092 in the north face of a 14" Maple
- AZ 130° 116.50' Northwesterly corner of wall at building #25990 Kelly Road
- AZ 215° 75.00' Northeast corner of building at north end of brick on the east wall of building #18340 Kelly Rd

The selected location is accepted by me and is generally accepted by professional surveyors as the best available evidence of the position of the original corner.

ACCEPTED BY THE MACOMB COUNTY SURVEY PEER GROUP AS THE OFFICIAL CORNER UNDER MICHIGAN PUBLIC ACT 345 OF 1990 AT A MEETING HELD ON 8-15-95
William E. Soderberg
 WILLIAM E. SODERBERG, P.S., CHAIRMAN

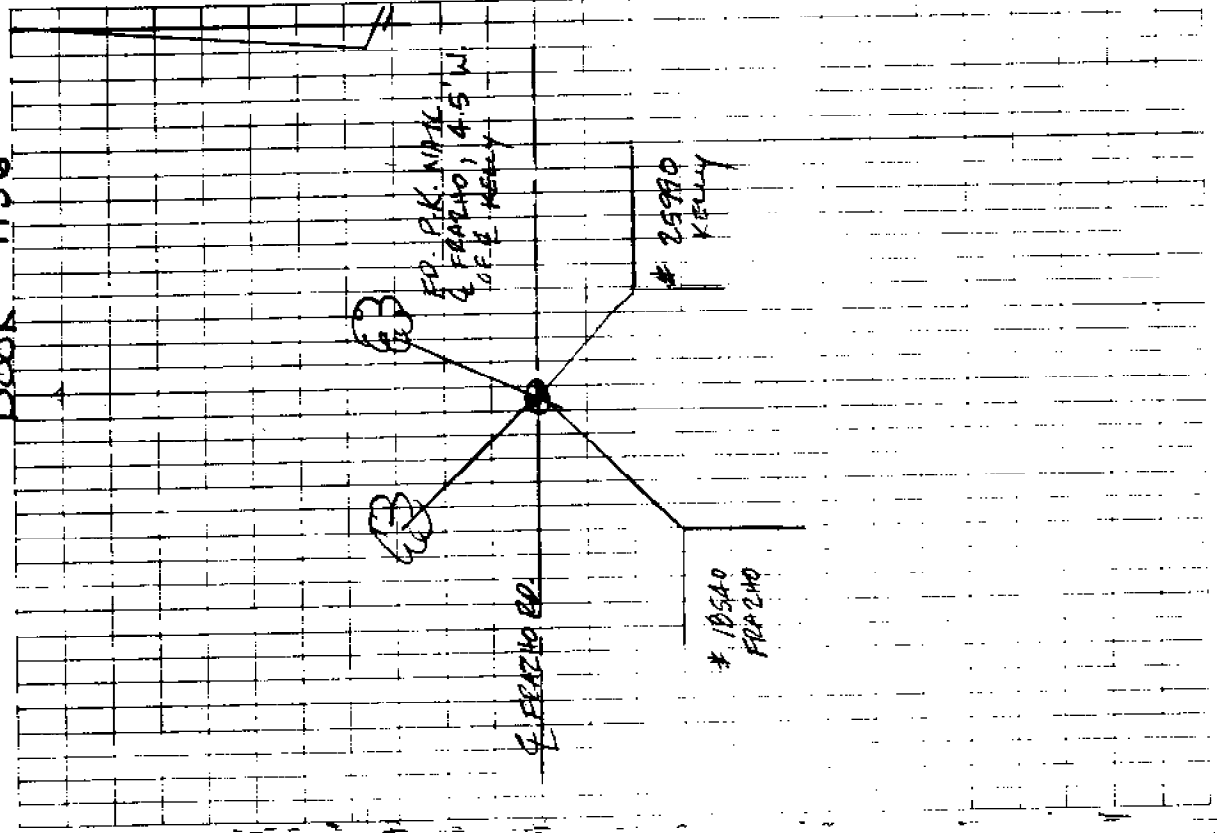
Signed by *C. Amey* Date 12-12-95
 Surveyor's Michigan License No. 34970

FORM APPROVED BY MICHIGAN STATE BOARD OF LAND SURVEYORS, JAN. 28, 1971

REVISED MAY 14, 1976
 REVISED JAN. 1983

Book # 1136

- 2-21-94
RMB, WGS, AEL
- EAST 1/4 COR. SEC. 20
T. 11N, R. 13E
CITY OF ROSEVILLE, MALOME CO
FR. PK. & ASPHALT ROAD
- 1) 320° 76.60' SBT PK. W/TAH
N.E. FACE 14" BOX ELDER
N. SIDE FRAZHO ROAD
- 2) 15° 58.38' SBT PK. W/TAH # 30097
EAST FACE 14" MADE
N. SIDE FRAZHO ROAD
- 3) 130° 116.05' N.W. COR OF NORTH MUST
WALL # 25990 KELLY ROAD
- 4) 225° 75.00' 161.00' EAC - COR C BIKL
19510 FEARHO ROAD



MAY 12 1953

SALEM

A PART OF THE 50th
VILLAGE OF ROSH

West 1/4 Post
Sec 21 T1N R13E
S89°15'45"E
210.0'

FRAZHO 86' WD ROAD

COPY
Recorder's Office
Macomb County, MI
This instrument was recorded on this day of
May A.D. 1953 at 11:00 o'clock
A.M. in the presence of
John B. Masten
Auditor General

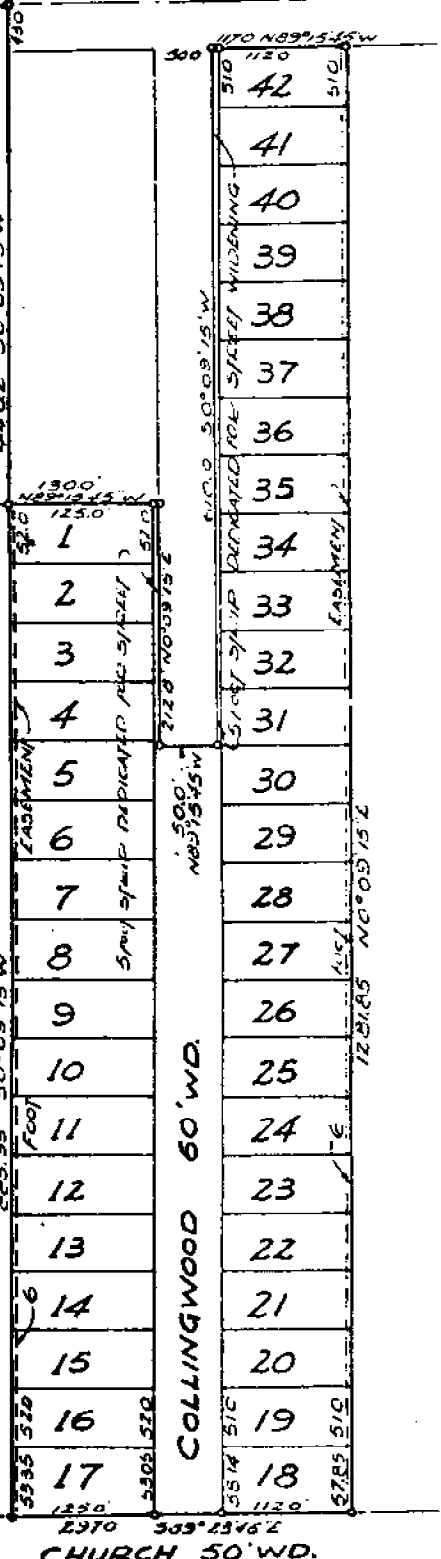
Point of Beginning

Scale: 1" = 100'

All Measurements are in feet and decimals thereof

I hereby certify that this map is a true copy of the map as filed in the Register of Deeds for the County of Macomb, Michigan, on
May 12, 1953
John B. Masten
AUDITOR GENERAL

Grant of ONen
Land Surveyors



DEDICATION

KNOW ALL MEN BY THESE PRESENTS, that Alex Kush
Sup. Town of Salem, Macomb Co. Mich
Morris Suke, President
Salem Bldg Co.

as proprietors, have caused the land embraced in the annexed plat to be laid out and platted, to be known as SALEM PARK SUBD'N. OF PART OF THE S. W. 1/4, SEC. 21, T. 1 N., R. 13 E., VILLAGE OF ROSEVILLE, MACOMB CO., MICHIGAN, and that the streets AND EASEMENTS as shown on said plat, hereby dedicated to the use of THE PUBLIC; HOWEVER, THE EASEMENTS ARE LIMITED TO UTILITY ACCESS ONLY.

Signed and Sealed in the Presence of
Alex Kush (Witness)
Alex Kush
Morris Suke (Witness)

ACKNOWLEDGMENT

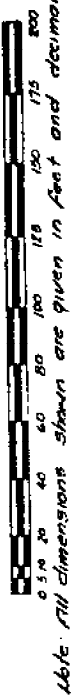
STATE OF MICHIGAN
County of Macomb
On this 20th day of April, 1953,
a Notary Public in and for said County, personally came the above named Alex Kush and Morris Suke Subscribers to me personally known, who do hereby state they are the Subscribers to this as a copy of their State of Michigan notary official certificate of said copy of their said instrument which of said copy by authority of the State of Michigan and Morris Suke's certificate and rights known to me to be the persons who executed the above dedication, and act the same to be their free act and deed.
Morris Suke
Notary Public
My Commission expires 11-22-53

It is hereby certified according to the County Treasurer's reports there are no tax liens or other claims against the property for five years previous to date of this instrument.
MAY 12 1953
J. B. Masten
Auditor General

MUNICIPAL APPROVAL

This plat was approved by the Commissioner of the Village of Roseville at a meeting held Dec 29, 1952
R. J. Nelson
R. J. Nelson

VILLAGE OF ROSEVILLE, MACOMB CO., MICHIGAN
SCALE 1"=40'

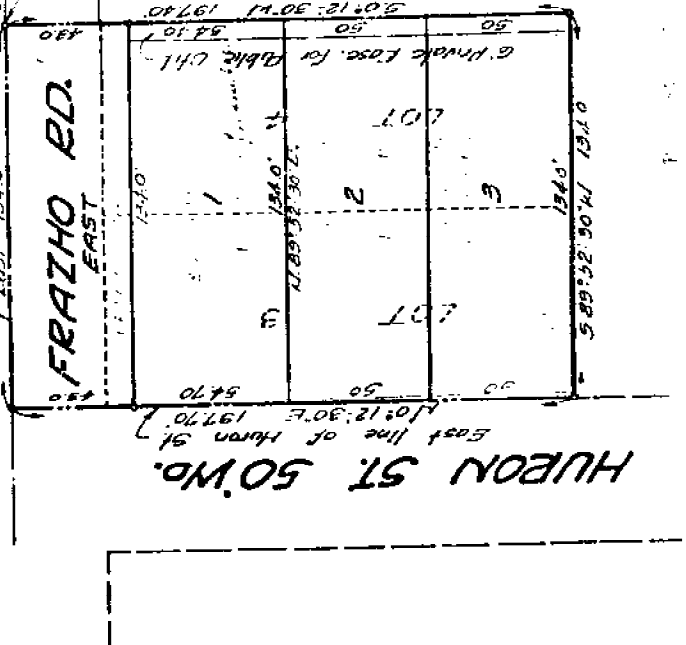


Note: All dimensions shown are given in feet and decimals thereof.

E. 1/4 Corner of
Sec. 17, T. 20,
R. 11, E. 15E.

1870

East 1/4 of West 1/4 line of section 20
East 134.0'
Point of Beginning



I hereby certify this copy is a true copy of map as
shown on file in the office of the County Treasurer.
Filed for Record this 28th day of
May 1956
Municipal Clerk
Date
1956

D. S. Masterson
Assistant County
Treasurer

Recorder's Office
Macomb County, Michigan
Filed of *Robert Nunn*
of *Roseville*
was recorded this *21st* day of
May A.D. 1956 at *10 o'clock*
A.M. in Liber *26* of plate
19
Robert Nunn
Recorder

THIS IS CERTIFY THAT ACCORDING TO THE COUNTY TREASURER'S RECORDS
TAXES ARE PAID ON THIS PROPERTY AND THAT TAXES ARE PAID FOR
THE YEARS PREVIOUS TO DATE OF THIS INSTRUMENT EXCEPT AS SHOWN
HEREIN.

1956
Lynn Willard, Macomb County Treasurer

DESCRIPTION

The land embraced in the annexed plat of "Cecil Subn. of part of E. 1/2
of N. E. 1/4 of Section 20, T. 1 N., R. 13 E., Village of Rose-
ville, Macomb County, Michigan", comprised of lots 1, 2, and 3, and being
a resubdivision of lots 3 and 4 of Mason Subdivision, as recorded in Liber
6, page 72 of plat, Macomb County Records, and is described as: begin-
ning at a point on the East & West 1/4 line of Section 20, T. 1 N., R. 13 E.,
said point being west 197.0 ft. from the E. 1/4 corner of said section; thence
S. 0°-12'-30" W., 197.40 ft.; thence S. 89°-52'-30" W., 134.0 ft. to the E.
line of Huron Street 50' wd.; thence N. 0°-12'-30" E., along the E. line of
Huron Street, 197.70 ft. to the E. & W. 1/4 line of section 20; thence east
along said E. & W. 1/4 line, 134.0 ft. to the point of beginning.

MUNICIPAL APPROVAL

This plat was approved by the Council of the Village of Roseville, at a
meeting held on the 9 day of April, 1956
and the width of lots are in compliance with requirements of Section 30,
Act 172 of 1929, as amended.

Robert Nunn
Robert Nunn, Village Clerk

MUNICIPAL APPROVAL

This plat was approved by the Council of the Village of Roseville, at a meeting held on the 9 day of April, 1956 and the width of lots are in compliance with requirements of Section 30, Act 172 of 1929, as amended.

Robert Nunn
Robert Nunn, Village Clerk

I hereby certify that the public sewage and water facilities are installed and ready for connection within the plat and that said facilities were approved and accepted July 21, 1957.

Robert Nunn
Robert Nunn, Village Clerk

APPROVAL BY COUNTY PLAT BOARD

This plat was approved on the 21 day of May, 1956, by the Macomb County Plat Board.

Aaron Burr
Reg. of Deeds, Aaron Burr

Albert A. Wagoner
Clerk, Albert A. Wagoner

Edward Whalen
Surveyor, Lynn Whalen

Frank E. Lohr
Drain Commissioner, Frank E. Lohr

SURVEYOR'S CERTIFICATE

I hereby certify that the plat hereon delineated is a correct one, and that permanent monuments consisting of iron rods at least one-half inch in diameter and not less than 36 inches in length, encased in concrete four inches in diameter and not less than 36 inches in length have been set at points marked thus (O) as thereon shown at all angles in the boundaries of the land platted, at all intersections of the lines of streets and at intersections of the lines of streets with the boundaries of the plat.

Richard C. Postiff
RICHARD C. POSTIFF
Registered Land Surveyor

7313 Lynn Whalen, Macomb County Recorder
M.L. Postiff

DESCRIPTION

The land embraced in the annexed plat of "Catlin Subn. of part of E. 1/2 of N. E. 1/4 of S. E. 1/4 of Section 20, T. 1 N., R. 13 E., Village of Roseville, Macomb County, Michigan", comprised of lots 1, 2, and 3, and being a subdivision of lots 3 and 4 of Masson Subdivision, as recorded in liber 8, page 72 of plats, Macomb County Records, and is described as: beginning at a point on the East & West 1/4 line of Section 20, T. 1 N., R. 13 E., said point being west 137.0 ft. from the E. 1/4 corner of said section; thence S. 0°-12'-30" W., 197.40 ft.; thence S. 89°-52'-30" W., 114.0 ft. to the E. line of Huron Street 50' wd.; thence N. 0°-12'-30" E., along the E. line of Huron Street, 197.70 ft. to the E. & W. 1/4 line of section 20; thence east along said E. & W. 1/4 line, 134.0 ft. to the point of beginning.

DEDICATION

KNOW ALL MEN BY THESE PRESENTS, that we Carl R. Catlin and Mayme Catlin, his wife, as proprietors, have caused the land embraced in the annexed plat to be surveyed, laid out and platted to be known as "Catlin Sub-division of part of E. 1/2 of N. E. 1/4 of S. E. 1/4 of Section 20, T. 1 N., R. 13 E., Village of Roseville, Macomb County, Michigan", and that the streets as shown on said plat are hereby dedicated to the use of the public, and that the private easements shown on said plat are hereby reserved for the use of public utilities or for a specific use indicated thereon and that no permanent structures are to be erected within the limits of said easements.

SIGNED AND SEALED

IN PRESENCE OF:

Richard J. Fields (L.S.)
Notary Public, Roseville

John F. Johnson (L.S.)
Notary Public, Roseville

ACKNOWLEDGMENT

STATE OF MICHIGAN) ss
COUNTY OF Macomb

On this 4th day of April, 1956, before me, a Notary Public in and for said County, personally came the above named Carl R. Catlin and Mayme Catlin, his wife, known to me to be the persons who executed the above dedication and acknowledged the same to be their free act and deed.

Richard J. Fields
Notary Public, Roseville County,
My commission expires Nov 21 - 1959

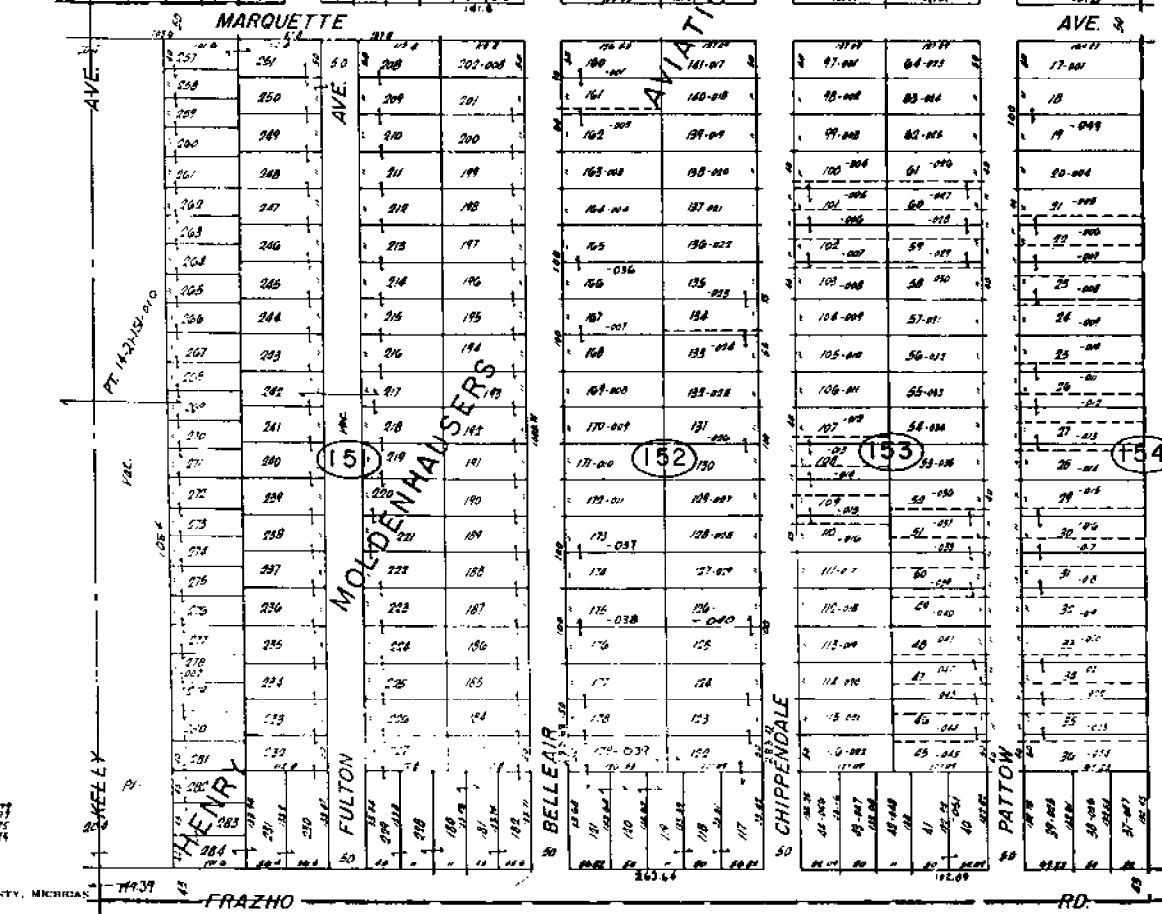
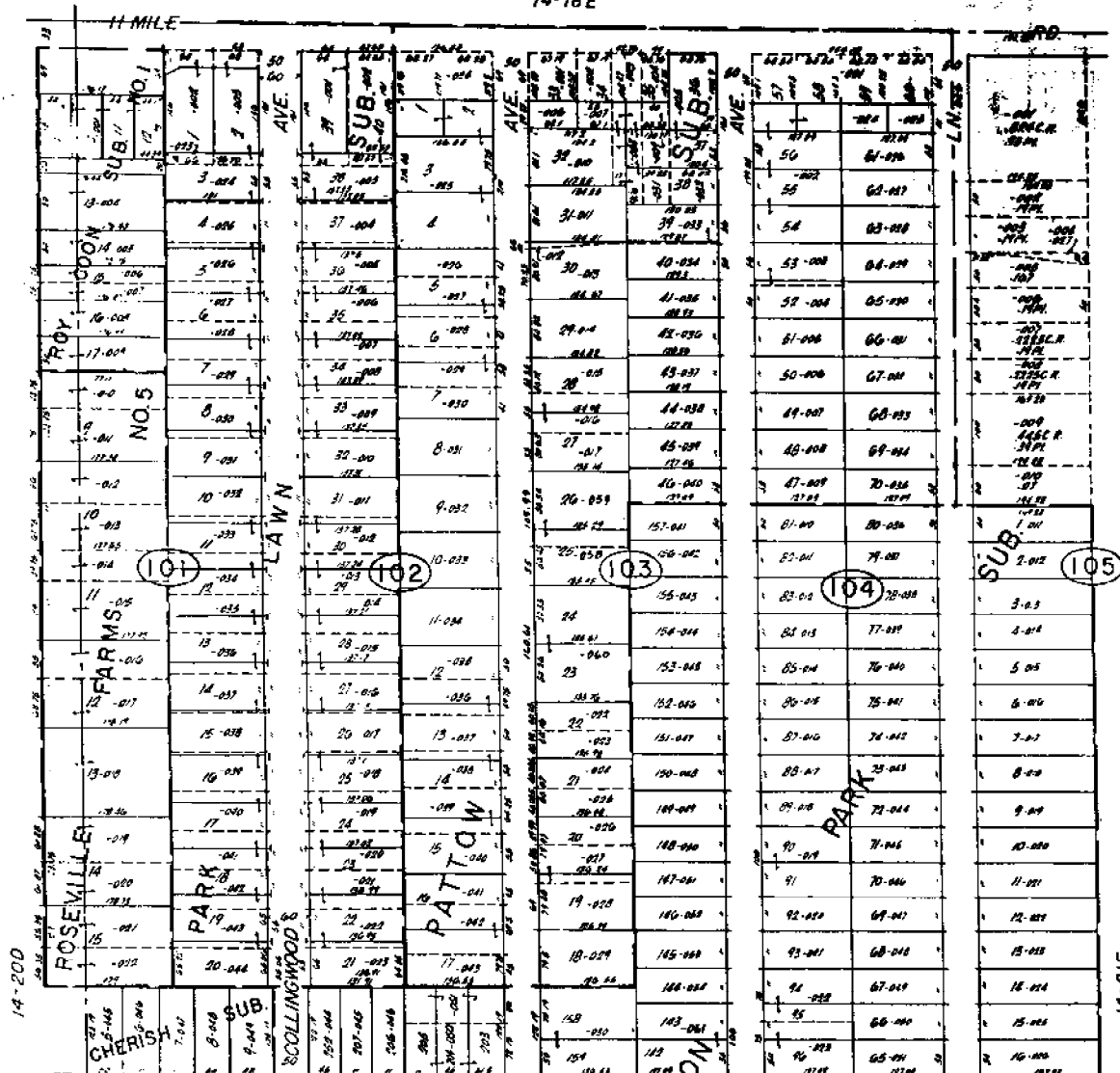
PLAN COMMISSION APPROVAL

This plan was approved by the Village of Roseville Planning Commission on the _____ day of _____, 19____.

Chairman

Secretary

128/11

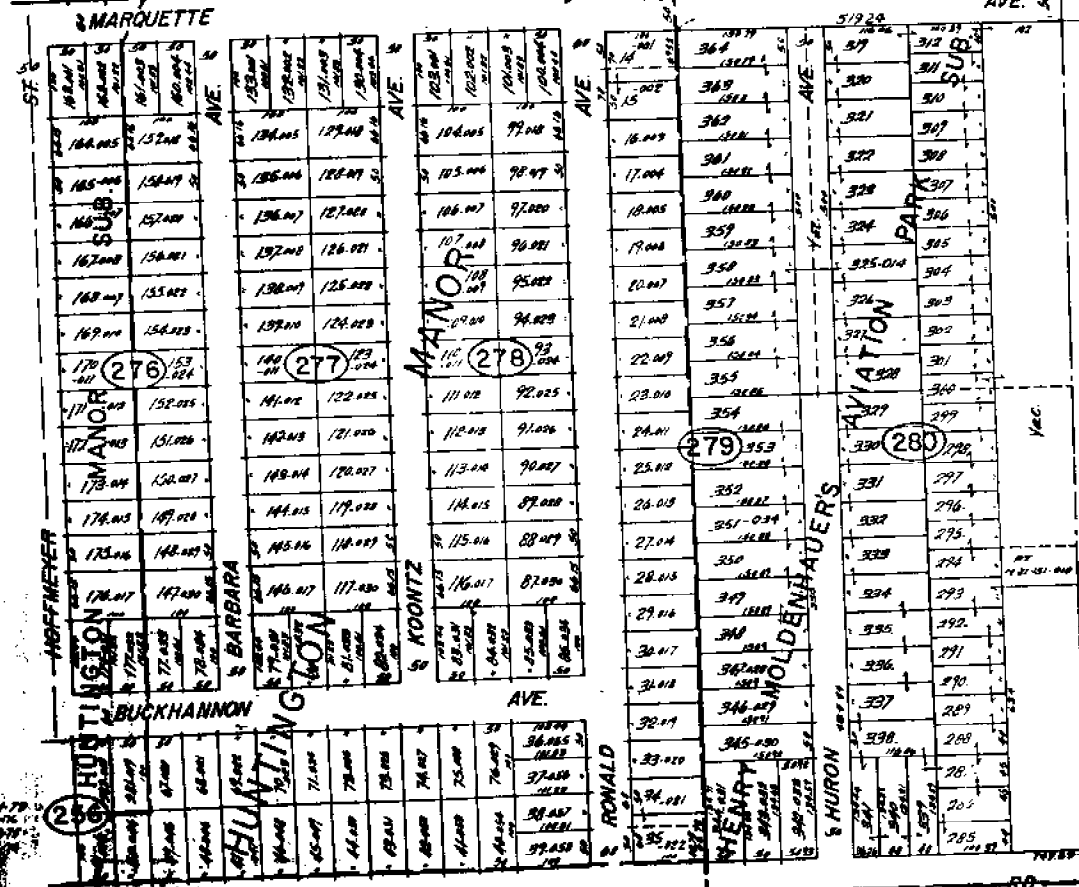
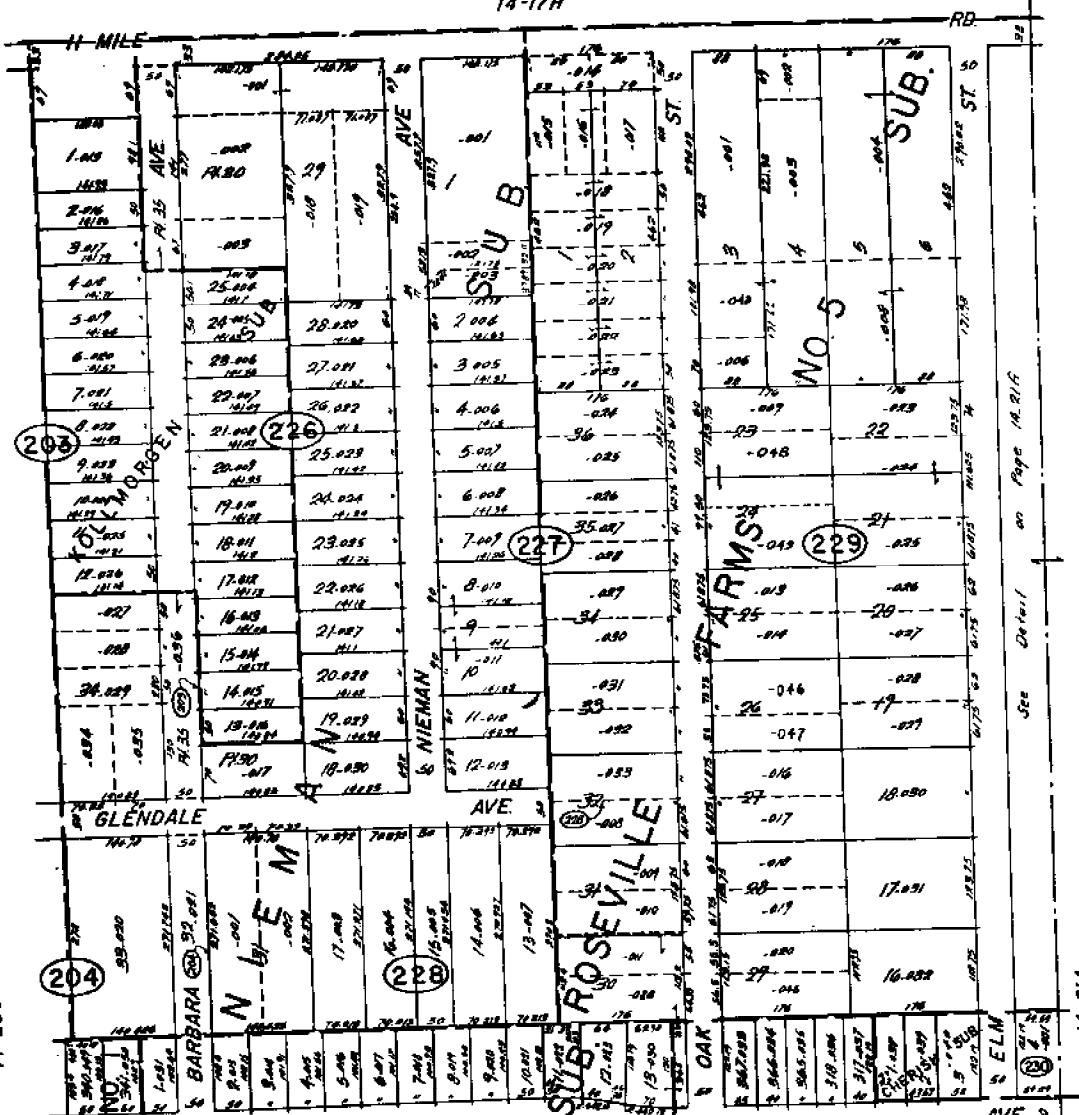


REV. 12-77
REV. 12-75
REV. 12-74

Copyright 1973
MACOMB COUNTY, MICHIGAN

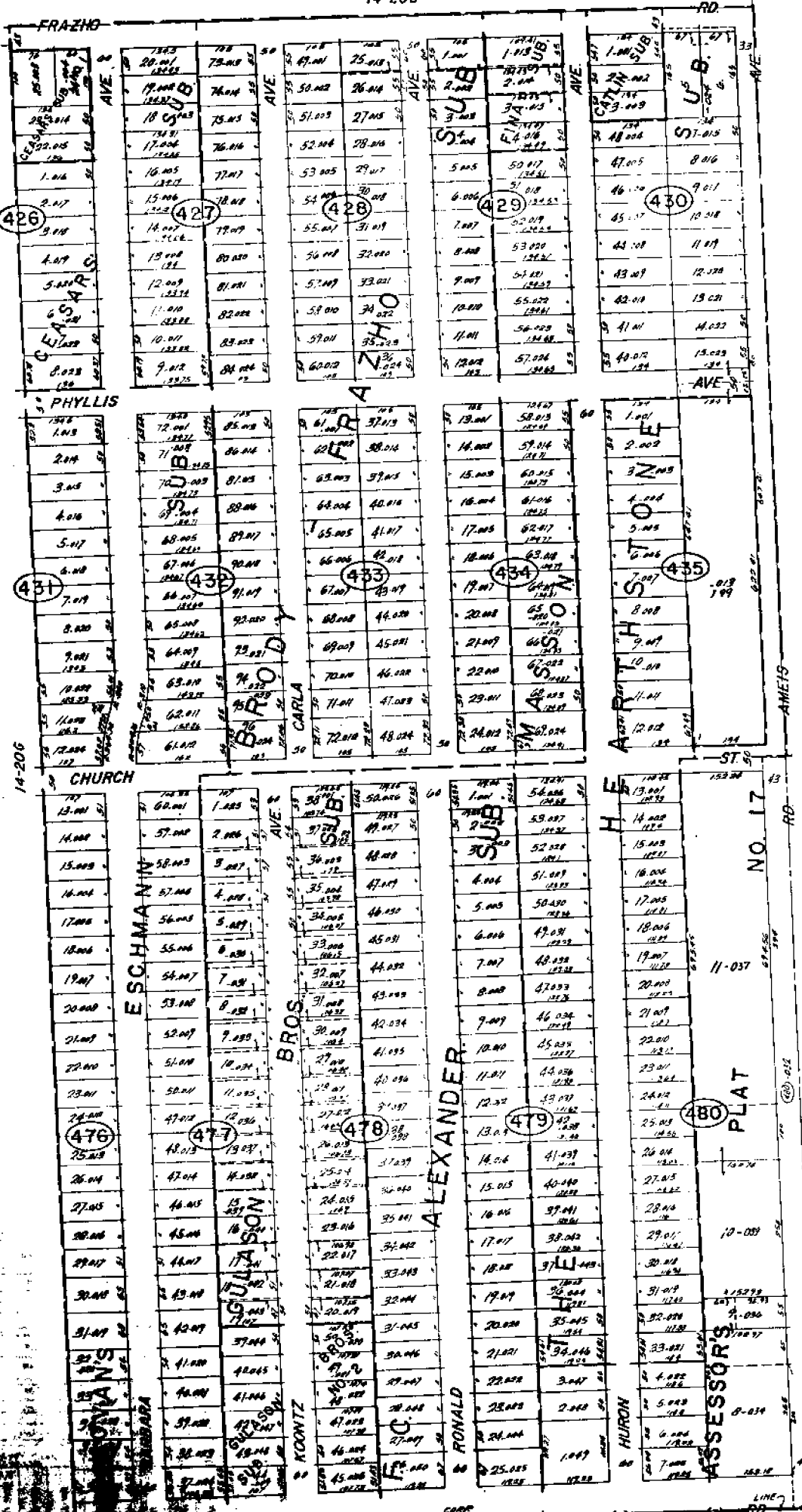
SCALE: 1" = 100'
1855
14-21A

14-21E
ROSEVILLE
W 1/2 NW 1/4 SEC. 21 T.1N. R.13E.



14-20H
ROSEVILLE
 E 1/2 N.E. 1/4 SEC. 20 T.1N. R.13E.

Copyright 1978
 MACOMB COUNTY, MICHIGAN
 SCALE: 1" = 100'
1850
 14-20D



ROSEVILLE

E. 1/2 S.E. 1/4 SEC. 20 T. 1 N. R. 13 E.

SCALE: 1" = 100'
1854
14-20H