

LAND CORNER RECORDATION CERTIFICATE
Filing Requirement of Act 74, Mich. P.A. 1970

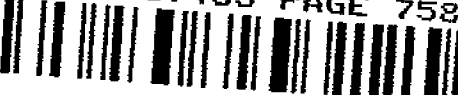
For corners in

Macomb
 (County)

Located In: _____ Corner Code # _____
 City of Roseville

1. Public Land Survey T 1N R 13E E-6
 T _____ R _____
 T _____ R _____
 T _____ R _____
 2. Property Controlling S _____ T _____ R _____
 in Section S _____ T _____ R _____
 3. Miscellaneous S _____ T _____ R _____
 Property in Sec. S _____ T _____ R _____
4. Lot No. _____, Recorded Plat
 5. Private Claims

5226798
 LIBER 17433 PAGE 758



12/15/2005 12:26:47 P.M.
 MACOMB COUNTY, MI SEAL
 CARMELLA SABAUGH, REGISTER OF DEEDS
 Register of Deeds Stamp & File Number

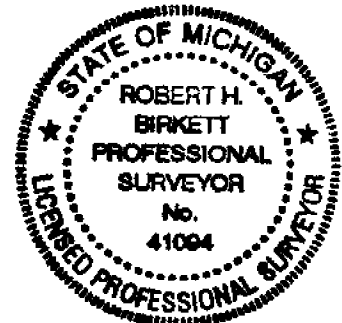
	A	B	C	D	E	F	G	H	I	J	K	L	M
2	6		5		4		3		2		1		
3													
4	7		8		9		10		11		12		
5													
6	18		17		16		15		14		13		
7													
8	19		20		21		22		23		24		
9													
10	30		29		28		27		26		25		
11													
12	31		32		33		34		35		36		
13													

I, Robert H. Birkett, in a field survey on, August 23, 2005 do hereby state that under requirements of P.A. 74, Michigan P.A. of 1970, the corner points mentioned in lines 1 and 2 above were in conformance with regulations and rules therefore as required in the current manual of survey instructions of the United States Department of the Interior, Bureau of Land Management or by a decree of a Court of Law and /or that the corner points mentioned in lines 3, 4 and 5 above were in conformance with the rules of the Michigan Board of Land Surveyors or by a Decree of a Court of Law; established, re-established, monumented, re-monumented, recovered, found as expressed below:

NOTE: Not more than 2 corners, all in the same town and range, may be recorded on this certificate.

A. Description of original monument and accessories and/or subsequent restoration:

- E-6 Corner common to section 16 & 17.
- (a) 1818, W. S. Preston, Set wooden post, GLO
 - (b) 1909, M. L. Brown No. 8310, "The Power House Sub", L002 P062 M.C.R.
 - (c) 1915, W. J. Lehner No. 123, "Roseville Farms No. 4 Subdivision", L002 P249 M.C.R.
 - (d) 1917, W. J. Lehner No. 123, "Meier Subdivision", L003 P101 M.C.R.
 - (e) 1919, W. J. Lehner No. 123, "Webber Farm Subdivision", L003 P177 M.C.R.
 - (f) 1919, W. J. Lehner No. 123, "Webber Farm Subdivision", L003 P177 M.C.R.
 - (g) 1923, W. J. Lehner No. 123, "Stoepel's Martin Subdivision", L006 P028 M.C.R.
 - (h) 1923, B. T. Coleman (C.E.), "Piper's Roseville City", L006 P050 M.C.R.
 - (i) 1923, B. T. Coleman (C.E.), "Piper's Roseville City No. 1", L006 P052 M.C.R.
 - (j) 1924, W. J. Lehner No. 123, "Stoepel's Martin Road Sub No. 1", L006 P070 M.C.R.
 - (k) 1924, W. J. Lehner No. 123, "Schram Ginley Subdivision", L007 P031 M.C.R.
 - (l) 1924, H.R. O'Mara (C.E.), "Mesle's Subdivision", L008 P008 M.C.R.
 - (m) 1924, J. W. Irwin (C.E.), "Oak View Subdivision", L008, P063 M.C.R.
 - (n) 1925, H. R. O'Mara (C.E.), "Shea Subdivision", L008 P096
 - (o) 1925, W. J. Lehner No. 123, "Kaufmann Subdivision", L009 P081 M.C.R.
 - (p) 1926, H. R. O'Mara (C.E.), "Christensen and Schram Subdivision", L011 P036 M.C.R.
 - (q) 1926, H. R. O'Mara (C.E.), "Biebers Subdivision", L012 P007 M.C.R.
 - (r) 1936, P. K. McCarthy (C.E.), "Assessors Plat no. 7", L017, P021 M.C.R.
 - (s) 1937, P. K. McBeth (C.E.), "Assessor's Plat No. 10", L018 P029 M.C.R.
 - (t) 1940, W. J. Lehner No. 123, "Assessor's Plat of Schollenberger Sub.", L020 P007 M.C.R.
 - (u) 1957, H. J. Fuller, (C.E.), "Assessors Plat No. 16", L039, P0021, M.R.C.
 - (v) 1984, S. W. Money No. 30092, Set P.K. nail, Unrecorded Survey



B. Description of corner evidence found and/or method applied in restoring or reestablishing corner:


- E-6 Found PK nail on the centerline of Martin Road (concrete). The P.K nail is supported by irons and monumentation found in documents (g), (j) (k), (u) and (v).

Field Measurements Between Corners

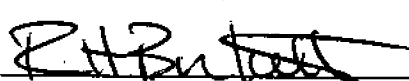
- E-6 to E-5 - 2692.91', GLO - 40 chains - 2640'
- E-6 to F-6 - 2711.74', Record distance south - 2713.60', Record distance north - 2712.46'
- E-6 to E-7 - 2695.06', Record distance east - 2701.41', Record distance west - 2695.14', GLO - 40 chains - 2640'

C. Description of monument for corner and accessories established to perpetuate locating the position of the corner:

- E-6 Replaced the found nail with an aluminum cap on an 3/4" x 24" iron with at the centerline Martin Road, marked "Macomb County Monument, MI, ACT 345, 41094, E-6" in a new monument box.
- Az. 40° - 94.25' - Southeast corner brick garage number 18669.
 - Az. 150° - 72.38' - Northeast corner brick garage number 18664.
 - Az. 200° - 25.60' - Set MCR tag in west face utility pole above a found PK nail.
 - Az. 335° - 86.45' - Southwest corner of brick house number 18651.

ACCEPTED BY THE MACOMB COUNTY SURVEY PEER GROUP AS THE OFFICIAL CORNER UNDER MICHIGAN PUBLIC ACT 345 OF 1990 AT A MEETING HELD ON 10-18-05

 MARTIN C. DUNN, P.S. CHAIRMAN

The Selected location is accepted by me and is generally accepted by Professional Surveyors as the best available evidence of the position of the original corner.

Signed by  Date 11-08-05
 Surveyor's Michigan License No. 41094

**Report of Survey
E-6, Erin Township
Town 1 North, Range 13 East
Macomb County, Michigan**

Corner Information

Corner common to section 16 & 17.
Found P.K. nail on the centerline of Martin Road

Tax Descriptions

None

Plats

1989, M. L. Brown No. 8310, "The Power House Sub", L002 P062 M.C.R.
1915, W. J. Lehner No. 123, "Roseville Farms No. 4 Subdivision", L002 P249 M.C.R.
1917, W. J. Lehner No. 123, "Meier Subdivision", L003 P101 M.C.R.
1919, W. J. Lehner No. 123, "Webber Farm Subdivision", L003 P177 M.C.R.
1919, W. J. Lehner No. 123, "Webber Farm Subdivision", L003 P177 M.C.R.
1923, W. J. Lehner No. 123, "Stoepel's Martain Subdivision", L006 P028 M.C.R.
1923, B. T. Coleman (C.E.), "Piper's Roseville City", L006 P050 M.C.R.
1923, B. T. Coleman (C.E.), "Piper's Roseville City No. 1", L006 P052 M.C.R.
1924, W. J. Lehner No. 123, "Stoepel's Martain Road Sub No. 1", L006 P070 M.C.R.
1924, W. J. Lehner No. 123, "Schram Ginley Subdivision", L007 P031 M.C.R.
1924, H. R. O'Mara (C.E.), "Mesle's Subdivision", L008 P008 M.C.R.
1924, J. W. Irwin (C.E.), "Oak View Subdivision", L008, P063 M.C.R.
1925, H. R. O'Mara (C.E.), "Shea Subdivision", L008 P096
1925, W. J. Lehner No. 123, "Kaufmann Subdivision", L009 P081 M.C.R.
1926, H. R. O'Mara (C.E.), "Christensen and Schram Subdivision", L011 P036 M.C.R.
1926, H. R. O'Mara (C.E.), "Biebers Subdivision", L012 P007 M.C.R.
1936, P. K. McCarthy (C.E.), "Assessors Plat no. 7", L017, P021 M.C.R.
1937, P. K. McBethy (C.E.), "Assessor's Plat No. 10", L018 P029 M.C.R.
1940, W. J. Lehner No. 123, "Assessor's Plat of Schollenberger Sub.", L020 P007 M.C.R.

Condominiums

None

Recorded Surveys

None

Miscellaneous

1984, S. W. Money No. 30092, Set P.K. nail, Unrecorded Survey
NE - 29.82' - "X" chiseled in south edge of DE manhole rim.
SE - 92.77' - P.K. nail set in north face utility pole
SSW - 25.44' - P.K. nail set in west face utility pole
NW - 59.50' - P.K. nail set in southwest face 20" maple
N - 22.60' - Back of curb

Observations From E-6

Field Measurement to E-5 - 2692.91'
Record distance east side section line - Unknown
Record distance west side section line - Unknown

Field Measurement to F-6 - 2711.74'
Record distance north side section line - 2612.46'
Record distance south side section line - 2713.60'

Field Measurement to E-7 - 2695.06'
Record distance east side section line - 2701.41'
Record distance west side section line - 2695.14'

Field Measurement to D-6 - Not found.

Recommendation

The recommendation to the Peer Review Board is to accept the above position as the faithful perpetuation of the corner.


Robert H. Birkett, P.S.
Michigan No. 41094

"ASSESSORS PLAT NO. 16"
PART OF THE NW.1/4 SEC. 16 T19N R13E.
VILLAGE OF ROSEVILLE MACOMB CO. MICHIGAN

SCALE: 1" = 100'

340447

NOTE: ALL MEASUREMENTS ARE IN FEET AND DECIMALS THEREOF.

HARRY J. FULLER
 REGISTERED CIVIL ENGINEER
 ST. CLEMENS MICH.

EXAMINED AND APPROVED
 JUN 11 1957

REGISTER'S OFFICE
 COUNTY OF MACOMB

By *Frank J. Drenth*
 Notary Public

Received for Record
 June 12, 1957

By *Caron Burrill*
 Assessor of Town

DEDICATION

KNOW ALL MEN BY THESE PRESENTS that I, Louis Loman, Assessor of the Village of Roseville, Macomb County, State of Michigan, by virtue of authority in me vested by Section 51, Act 172 of 1929, having been duly authorized by the Village Council, have caused the land described in the attached plat to be surveyed, laid out, and divided to be known as Assessor's Plat No. 16, part of the N. W. 1/4 Section 16 T. 19 N. R. 13 E. Village of Roseville, Macomb County, Michigan, and that the streets as shown on said plat are now being used for such purposes:

WITNESSES:
Shirley H. Hildebrand
Caron Burrill

Louis Loman
 Assessor of the Village of Roseville

ACKNOWLEDGMENT

STATE OF MICHIGAN } ss.
 County of Macomb }

On this 6th day of MARCH, A. D. 1957, before me a Notary Public over the above named Assessor of the Village of Roseville, known to me to be the person who executed the above dedication and acknowledged the same to be his free act and deed as such Assessor.

Harry J. Fuller
 Notary Public, Macomb County, Michigan

By Assessor as before, Caron Burrill

DESCRIPTION OF LAND PLATTED

The land embraced in the attached plat of **ASSESSORS PLAT NO. 16** part of the N. W. 1/4 Section 16 T. 19 N. R. 13 E. Village of Roseville, Macomb County, Michigan, is described as follows:

Commencing at the West 1/4 part of Section 16 T. 19 N. R. 13 E. as a point of beginning, thence N. 08-11-30" E. 1354.18 feet thence S. 89-41-30" E. 328.69 feet, thence S. 0-04-30" E. 1351.38 feet, thence S. 89-58" E. 173.65 feet to the point of beginning, consisting of Lots 1 to 53 inclusive. Numbering 53 lots.

CONVEYOR'S CERTIFICATE

I hereby certify that the plat herein delineated is a correct one and that permanent metal monuments consisting of bars of not less than one-half inch in diameter and thirty six inches in length secured in a concrete cylinder least 4 inches in diameter and thirty six inches in depth have been placed at points marked (a) as thereon shown at all angles to the boundaries of the land platted, at all intersections of the streets, intersections of alleys, of streets and alleys, and at the intersections of streets and alleys with the boundaries of the plat as shown on said plat.

Harry J. Fuller
 Notary Public, Macomb County, Michigan

CERTIFICATE OF MUNICIPAL APPROVAL

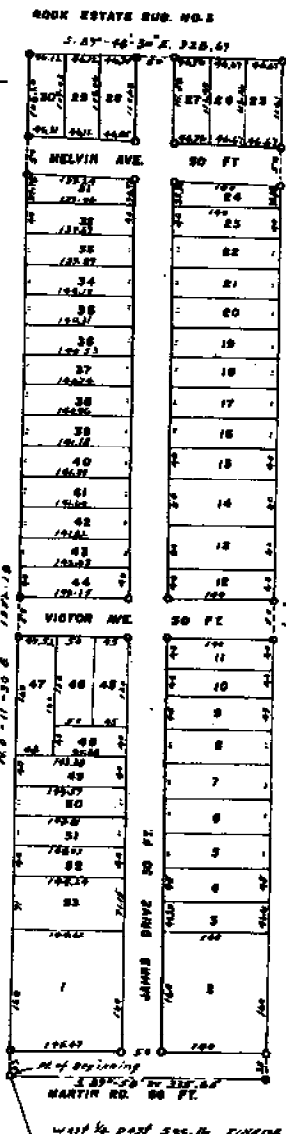
This plat was approved by the Village Council of the Village of Roseville at a meeting held 2-2-1957

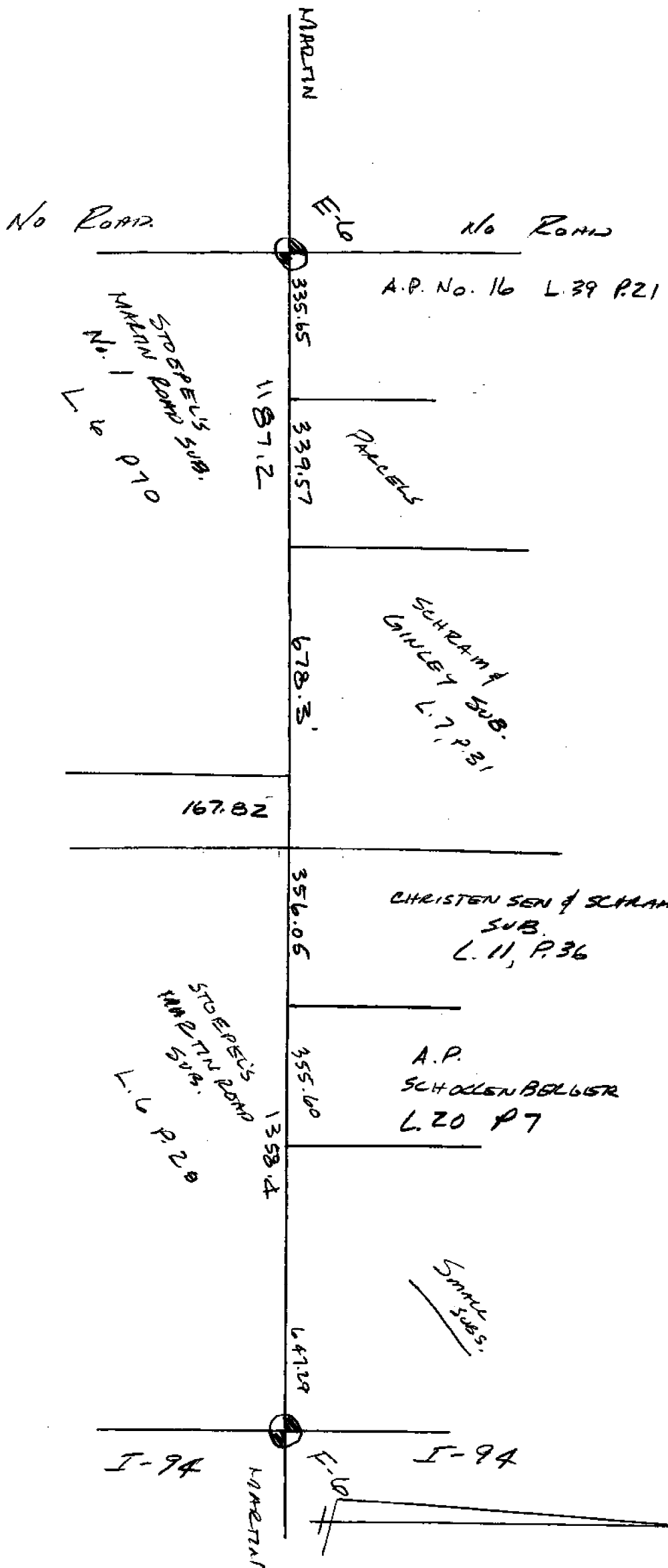
Robert J. Ross
 Village Clerk

CERTIFICATE OF APPROVAL BY COUNTY BOARD

This plat was approved on the 4th day of March, 1957.

Caron Burrill
 Assessor, County Registrar of Deeds
Albert W. Taylor
 Albert Taylor, County Clerk
Frank Lohr
 Frank Lohr, County Drain Commissioner



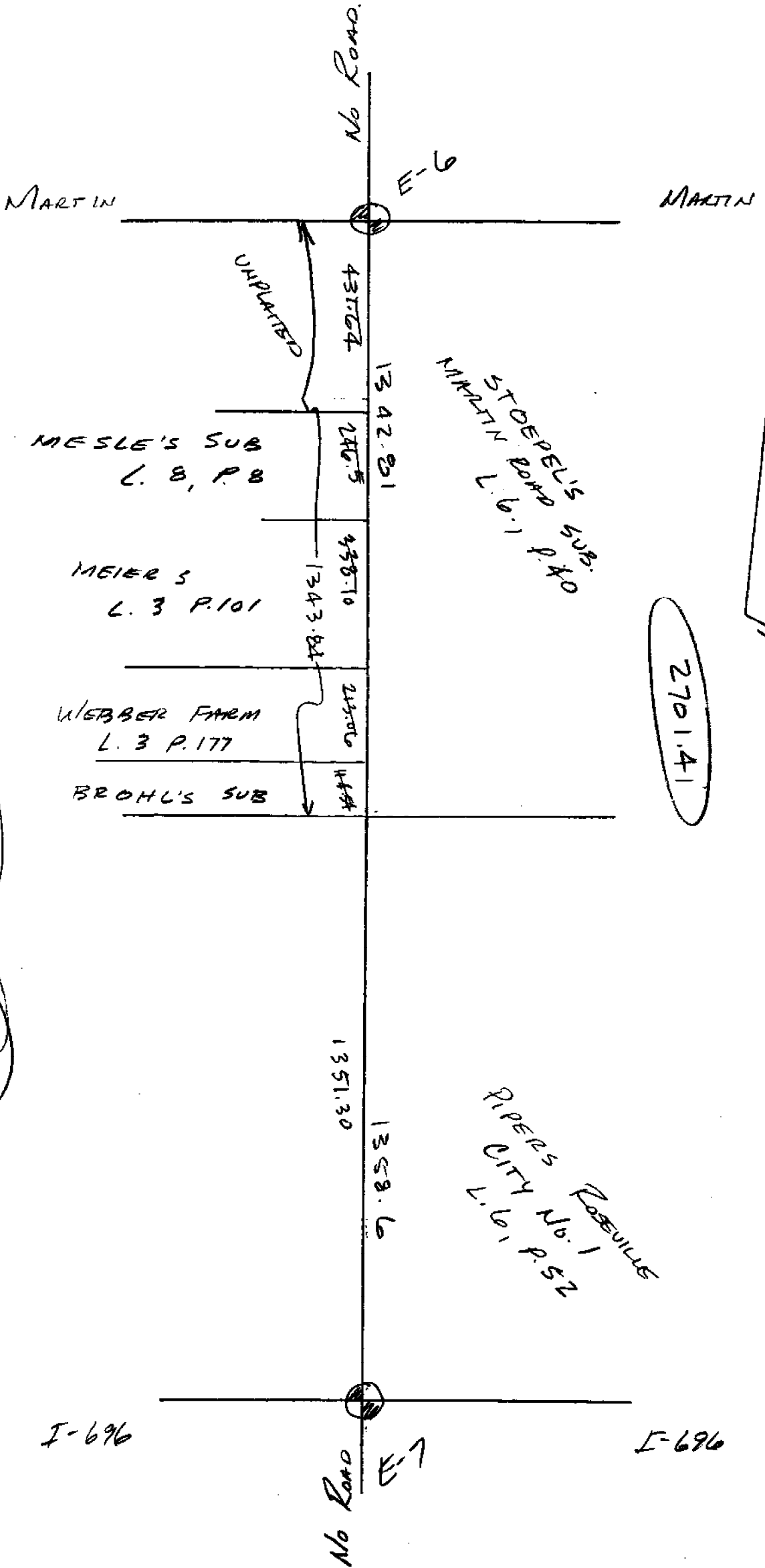


16E

16F

16A

16B



170

PARCELS

E-5

PARCELS



JUNCTION LITTLE
FARMS
L. 3 P. 133

477.90

ROCK ESTATES
SUB No. 3
L29 P23

16A

2003'

1352.18

ASSESSORS
PLAT No. 16
L. 39 P. 21

E-6

Town	OKLA	PRNC	NRBCA	LMNY	MIAMI
653	649	677	693	609	475
652	616	678	644	600	476
651	641	679	648	601	477
650	642	680	646	602	478
649	643	681	647	603	479
648	644	682	648	604	480
647	645	683	649	605	481
646	646	684	650	606	482
645	647	685	651	607	483
644	648	686	652	608	484
643	649	687	653	609	485
642	650	688	654	610	486
641	651	689	655	611	487
640	652	690	656	612	488
639	653	691	657	613	489
638	654	692	658	614	490
637	655	693	659	615	491
636	656	694	660	616	492
635	657	695	661	617	493
634	658	696	662	618	494
633	659	697	663	619	495
632	660	698	664	620	496
631	661	699	665	621	497
630	662	700	666	622	498
629	663	701	667	623	499
628	664	702	668	624	500
627	665	703	669	625	501
626	666	704	670	626	502
625	667	705	671	627	503
624	668	706	672	628	504
623	669	707	673	629	505
622	670	708	674	630	506
621	671	709	675	631	507
620	672	710	676	632	508
619	673	711	677	633	509
618	674	712	678	634	510
617	675	713	679	635	511
616	676	714	680	636	512
615	677	715	681	637	513
614	678	716	682	638	514
613	679	717	683	639	515
612	680	718	684	640	516
611	681	719	685	641	517
610	682	720	686	642	518
609	683	721	687	643	519
608	684	722	688	644	520
607	685	723	689	645	521
606	686	724	690	646	522
605	687	725	691	647	523
604	688	726	692	648	524
603	689	727	693	649	525
602	690	728	694	650	526
601	691	729	695	651	527
600	692	730	696	652	528
599	693	731	697	653	529
598	694	732	698	654	530
597	695	733	699	655	531
596	696	734	700	656	532
595	697	735	701	657	533
594	698	736	702	658	534
593	699	737	703	659	535
592	700	738	704	660	536
591	701	739	705	661	537
590	702	740	706	662	538
589	703	741	707	663	539
588	704	742	708	664	540
587	705	743	709	665	541
586	706	744	710	666	542
585	707	745	711	667	543
584	708	746	712	668	544
583	709	747	713	669	545
582	710	748	714	670	546
581	711	749	715	671	547
580	712	750	716	672	548
579	713	751	717	673	549
578	714	752	718	674	550
577	715	753	719	675	551
576	716	754	720	676	552
575	717	755	721	677	553
574	718	756	722	678	554
573	719	757	723	679	555
572	720	758	724	680	556
571	721	759	725	681	557
570	722	760	726	682	558
569	723	761	727	683	559
568	724	762	728	684	560
567	725	763	729	685	561
566	726	764	730	686	562
565	727	765	731	687	563
564	728	766	732	688	564
563	729	767	733	689	565
562	730	768	734	690	566
561	731	769	735	691	567
560	732	770	736	692	568
559	733	771	737	693	569
558	734	772	738	694	570
557	735	773	739	695	571
556	736	774	740	696	572
555	737	775	741	697	573
554	738	776	742	698	574
553	739	777	743	699	575
552	740	778	744	700	576
551	741	779	745	701	577
550	742	780	746	702	578
549	743	781	747	703	579
548	744	782	748	704	580
547	745	783	749	705	581
546	746	784	750	706	582
545	747	785	751	707	583
544	748	786	752	708	584
543	749	787	753	709	585
542	750	788	754	710	586
541	751	789	755	711	587
540	752	790	756	712	588
539	753	791	757	713	589
538	754	792	758	714	590
537	755	793	759	715	591
536	756	794	760	716	592
535	757	795	761	717	593
534	758	796	762	718	594
533	759	797	763	719	595
532	760	798	764	720	596
531	761	799	765	721	597
530	762	800	766	722	598
529	763	801	767	723	599
528	764	802	768	724	600
527	765	803	769	725	601
526	766	804	770	726	602
525	767	805	771	727	603
524	768	806	772	728	604
523	769	807	773	729	605
522	770	808	774	730	606
521	771	809	775	731	607
520	772	810	776	732	608
519	773	811	777	733	609
518	774	812	778	734	610
517	775	813	779	735	611
516	776	814	780	736	612
515	777	815	781	737	613
514	778	816	782	738	614
513	779	817	783	739	615
512	780	818	784	740	616
511	781	819	785	741	617
510	782	820	786	742	618
509	783	821	787	743	619
508	784	822	788	744	620
507	785	823	789	745	621
506	786	824	790	746	622
505	787	825	791	747	623
504	788	826	792	748	624
503	789	827	793	749	625
502	790	828	794	750	626
501	791	829	795	751	627
500	792	830	796	752	628
499	793	831	797	753	629
498	794	832	798	754	630
497	795	833	799	755	631
496	796	834	800	756	632
495	797	835	801	757	633
494	798	836	802	758	634
493	799	837	803	759	635
492	800	838	804	760	636
491	801	839	805	761	637
490	802	840	806	762	638
489	803	841	807	763	639
488	804	842	808	764	640
487	805	843	809	765	641
486	806	844	810	766	642
485	807	845	811	767	643
484	808	846	812	768	644
483	809	847	813	769	645
482	810	848	814	770	646
481	811	849	815	771	647
480	812	850	816	772	648
479	813	851	817	773	649
478	814	852	818	774	650
477	815	853	819	775	651
476	816	854	820	776	652
475	817	855	821	777	653
474	818	856	822	778	654
473	819	857	823	779	655
472	820	858	824	780	656
471	821	859	825	781	657
470	822	860	826	782	658
469	823	861	827	783	659
468	824	862	828	784	660
467	825	863	829	785	661
466	826	864	830	786	662
465	827	865	831	787	663
464	828	866	832	788	664
463	829	867	833	789	665
462	830	868	834	790	666
461	831	869	835	791	667
460	832	870	836	792	668
459	833	871	837	793	669
458	834	872	838	794	670
457	835	873	839	795	671
456	836	874	840	796	672
455	837	875	841	797	673
454	838	876	842	798	674
453	839	877	843	799	675
452	840				

15-06

L. 2
P. 62

1898 MASON L. BROWN

Report

THE POWER HOUSE SUB

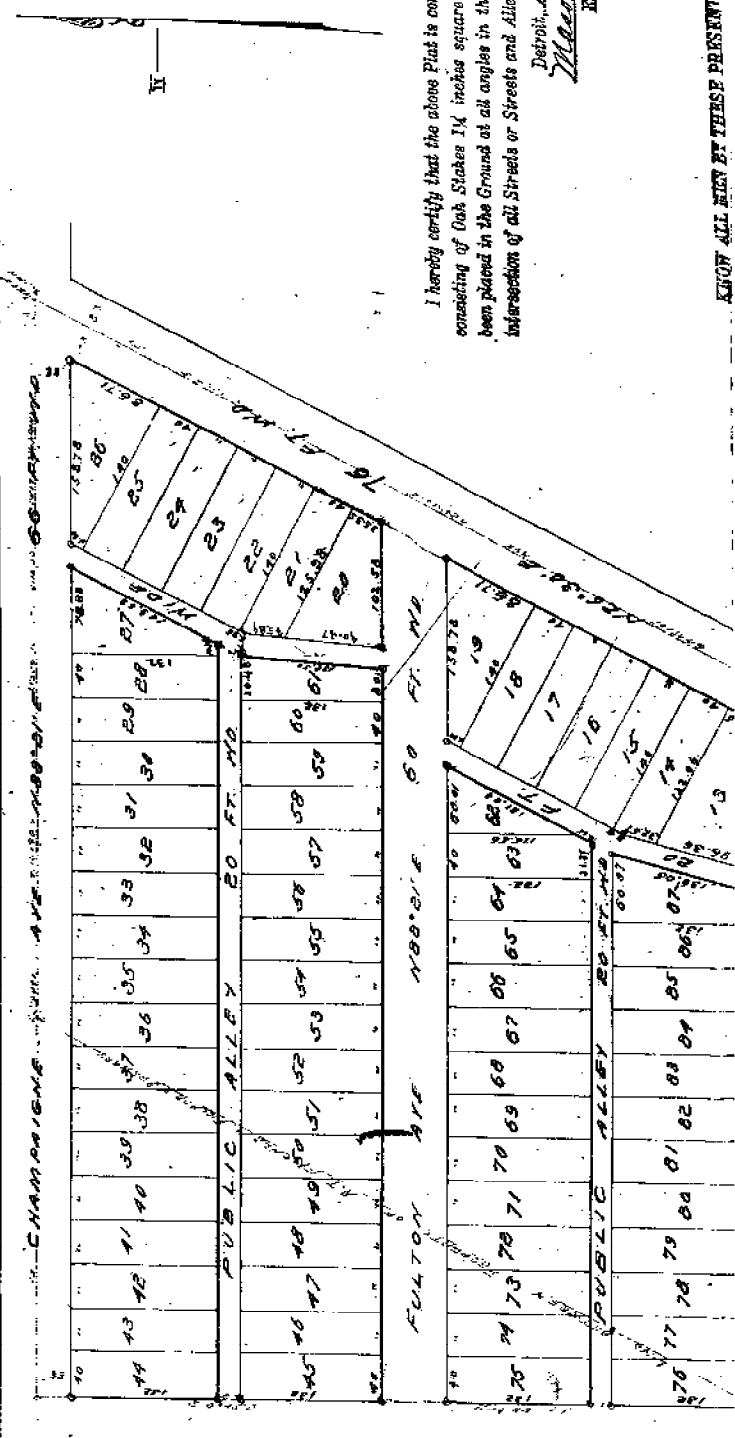
OF THE ELY PART OF S.E. 1/4 OF SECTION 17, T. 14 N. R. 16 E.
LYING WEST OF GANTTROT AVE. MACOMB CO.,
TOWNSHIP OF EARL, MICHIGAN.

Mason L. Brown
Civil Engineer & Surveyor
221 1/2 S. Chamberlain St. Detroit, Michigan.

L. B.

P. 62

SCALE 100 FT. = 1 IN.



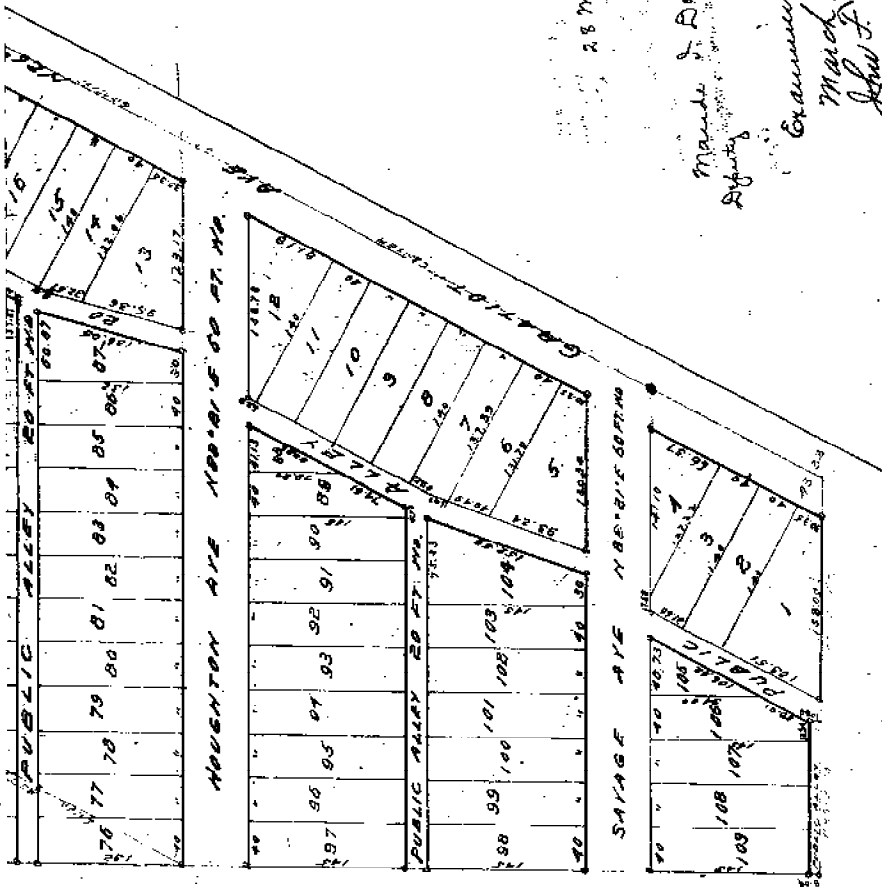
I hereby certify that the above Plat is correct, and that Monuments consisting of Oak Stakes 1 1/4 inches square and 15 inches long have been placed in the Ground at all angles in the Boundaries, and at the intersection of all Streets or Alleys, as shown on this Plat by O.
Detroit, Michigan, 1898.
Mason L. Brown
Engineer and Surveyor.

KNOW ALL MEN BY THESE PRESENTS, that M.L.B.

KNOW ALL MEN BY THESE PRESENTS, that WE
ALEXANDER T. FISHER and MARY FISHER
 (his wife) and MARY T. BERKERT
 Have caused the land embraced in the above plat to be surveyed, laid
 out and platted, to be known as Section 18, Township 36 North, Range 18 East,
Co., Michigan, and that the Streets and
 Alleys shown on said plat are hereby dedicated to the use of the public.
 Witness our hands and seals this 18th day of February
 A. D., Eighteen Hundred and Ninety one
 In presence of: Alfred W. Fisher, D.S.
Adams, Mabel, Mary Fisher, D.S.
Humbert, Mary T. Bennett

STATE OF MICHIGAN,
 COUNTY OF OSHTON
 In this, the 18 day of February 1891, before
 me, a Notary Public in and for said county, personally appeared the
 above named ALEXANDER T. FISHER and MARY FISHER
and MARY T. BERKERT
 known to me to be the same persons who executed the above dedication,
 and who acknowledged the same to be their free act and deed.
Alfred W. Fisher, Notary Public,
OSHTON, Michigan.

STATE OF MICHIGAN, 1891
 County of OSHTON
 of Deeds, and W. M. D. ... Register
 certify that we have each carefully compared this copy with the original
 plat of Section 18, Township 36 North, Range 18 East, Co., Michigan,
 and that it is an exact copy thereof and of
 the whole of such original map or plat.
W. M. D. ... Register of Deeds.
... Surveyor.



28 Mar 1891

Made & Amended
 Examined & Approved
 March 7th 1891
 John F. Wilkinson
 Deputy Auditor General

March 28th
 March 10th
 March 2nd
 Made J. Romellum

THE PROPERTY HEREIN PLATTED IS DESCRIBED AS
 beginning at the intersection of the northern line of
 18th St. E. & 18th St. W. and the center of Grand Ave. Thence
 along said north-south line 800 ft. to 1000 ft. Thence
 45th 1000 ft. Thence along said north-south line to the center
 of Grand Ave. Thence along said center of Grand Ave. to the center
 of 18th St. E. to the point of beginning.

See Affidavit filed 169 Range 190

E-06

L. 2
P. 249

1915 W. J. LEHNER No. 123

Charles H. Hansen
Surveyor

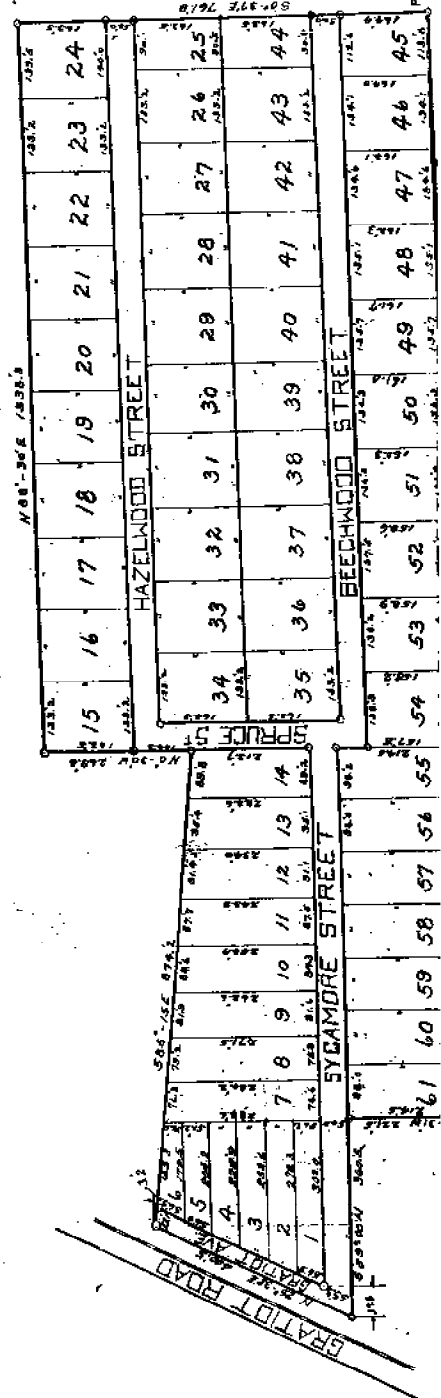
ROSEVILLE FARMS No 4 SUBDIVISION

OF PART OF SOUTH & OF SOUTH EAST 4
OF SEC 17 IN R 13 E; ERIN TOWNSHIP
MACOMB COUNTY MICH

L. 2
P. 249

Resolution L. 2150B-519

See Plat of 16, 17 & 18, Same Ref. Plat. or
see 8th for sidewalk lot 45 - 510'



L 3
P 101

1917 W. J. LEHNER

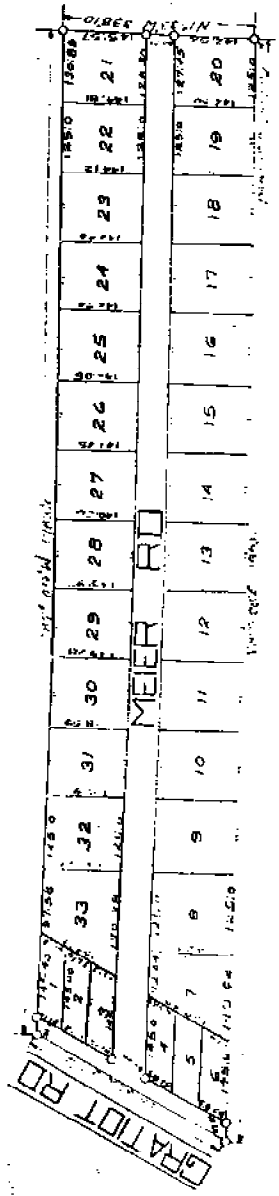
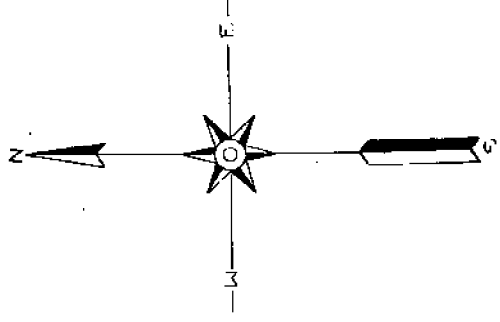
6 P. 101

Examined and approved
July 21-1917
John S. Hesseman
Notary Public

PLAT "MEIER SUBDIVISION"

OF PART OF S¹/₄ OF N¹/₂ OF SE¹/₄ SEC 17 T19R12E
ERIN TOWNSHIP, MACOMB COUNTY MICHIGAN.

Scale 200ft = 1" = 4"



DEFINITIONS

- 1. - All lots shown on this plat are to be sold as one lot.
- 2. - All lots shown on this plat are to be sold as one lot.
- 3. - All lots shown on this plat are to be sold as one lot.
- 4. - All lots shown on this plat are to be sold as one lot.
- 5. - All lots shown on this plat are to be sold as one lot.
- 6. - All lots shown on this plat are to be sold as one lot.
- 7. - All lots shown on this plat are to be sold as one lot.
- 8. - All lots shown on this plat are to be sold as one lot.
- 9. - All lots shown on this plat are to be sold as one lot.
- 10. - All lots shown on this plat are to be sold as one lot.
- 11. - All lots shown on this plat are to be sold as one lot.
- 12. - All lots shown on this plat are to be sold as one lot.
- 13. - All lots shown on this plat are to be sold as one lot.
- 14. - All lots shown on this plat are to be sold as one lot.
- 15. - All lots shown on this plat are to be sold as one lot.
- 16. - All lots shown on this plat are to be sold as one lot.
- 17. - All lots shown on this plat are to be sold as one lot.
- 18. - All lots shown on this plat are to be sold as one lot.
- 19. - All lots shown on this plat are to be sold as one lot.
- 20. - All lots shown on this plat are to be sold as one lot.
- 21. - All lots shown on this plat are to be sold as one lot.
- 22. - All lots shown on this plat are to be sold as one lot.
- 23. - All lots shown on this plat are to be sold as one lot.
- 24. - All lots shown on this plat are to be sold as one lot.
- 25. - All lots shown on this plat are to be sold as one lot.
- 26. - All lots shown on this plat are to be sold as one lot.
- 27. - All lots shown on this plat are to be sold as one lot.
- 28. - All lots shown on this plat are to be sold as one lot.
- 29. - All lots shown on this plat are to be sold as one lot.
- 30. - All lots shown on this plat are to be sold as one lot.
- 31. - All lots shown on this plat are to be sold as one lot.
- 32. - All lots shown on this plat are to be sold as one lot.

BUYER'S OBLIGATIONS

I hereby certify that the plat herein submitted is a correct one, and that exact copies will, on request, be made and filed in the office of the Register of Deeds for the County of Macomb, Michigan.

SAVANT'S CERTIFICATION

I hereby certify that the plat herein submitted is correct, and that sufficient money has been paid for the same as shown above at all legal rates of interest and charges.

William J. Sawyer
Savant

CERTIFICATE OF DEEDS APPROVAL

This plat was approved by the County Clerk on the _____ day of _____ 19____.

Attest: _____
County Clerk

CERTIFICATE OF APPROVAL BY COUNTY CLERK

This plat was approved on the _____ day of _____ 19____.

William J. Sawyer
County Clerk

COUNTY TREASURER'S CERTIFICATE

Office of County Treasurer, Jacobus County.
I hereby certify that there are _____ tax liens or titles held by the State or the lands described in annexed plat, and that there are _____ tax liens or titles held by individuals or this lands, for the five years preceding the _____ day of _____ 19____, and that the taxes for said period or five years are _____ paid, as shown by the records of this office.

William J. Sawyer
County Treasurer

Part of Section 16, Township 36 North, Range 17 East, 1st Meridian, Michigan, containing 14.360 acres of land, more or less, as shown on the plat of the same filed for record in the office of the County Clerk of Jacobus County, Michigan, on the _____ day of _____ 19____.

John J. Sawyer
Notary Public

Notary Public in and for the State of Michigan, my commission expires _____ day of _____ 19____.

John J. Sawyer
Notary Public in and for the State of Michigan, my commission expires _____ day of _____ 19____.

DESCRIPTION

The land embraced in the annexed plat of "Acker - Subdivision" of part of S. 16 of T. 36 N. R. 17 E. 1st Meridian, Michigan, is described as follows: Commencing at a point 167.0 feet N. 10 33' E. of the S. E. corner of said Section 17; thence N. 10 33' W. 132.1 feet; thence S. 87° 09' E. 173.0 feet to easterly line of Rapid Railway Company's right of way; thence N. 25° 52' W. 371.4 feet along said right of way; thence N. 57° 24' E. 193.0 feet, to place of beginning. Containing 14.360 acres of land.

REGISTERED OFFICE }
COUNTY OF JACOBUS }
Recorded for Record this _____ day of _____ A. D. 19____
at _____ o'clock _____ and _____
of _____ of _____
on page _____ of _____
John J. Sawyer

15

L.B.
R.177

1919 M. J. LEHNER No. 123

DESIGNED

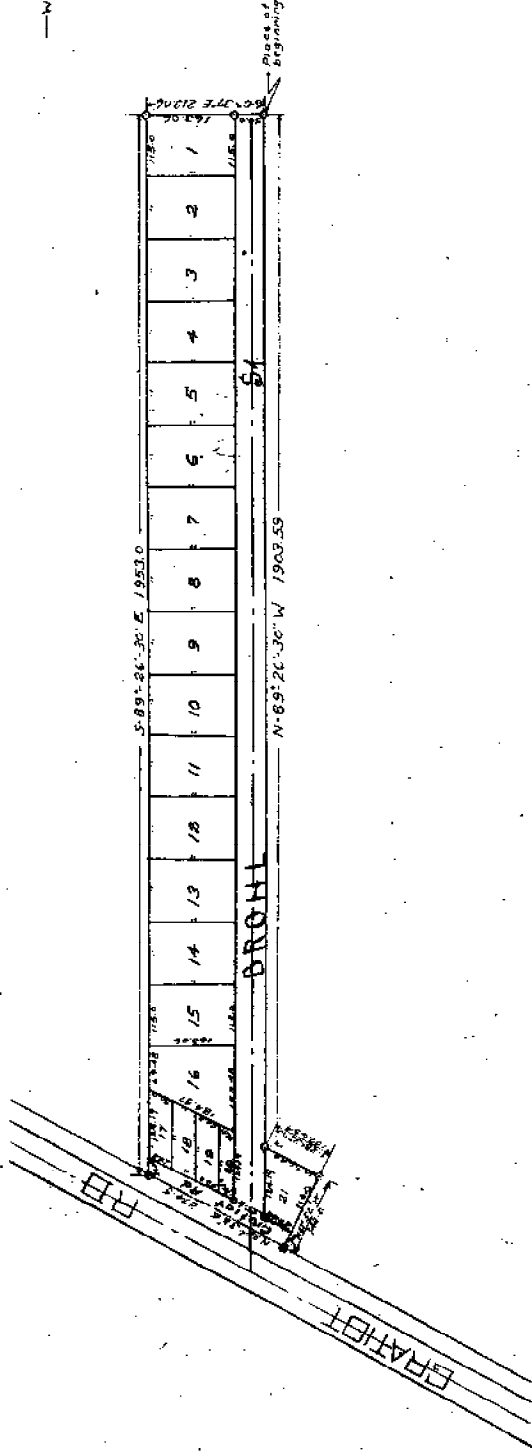
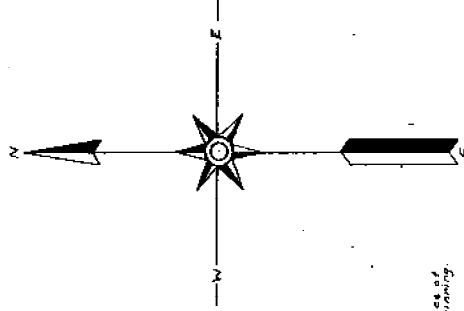
10" WEBBER FARM SUBDIVISION

OF PART OF N½ OF S.E.¼ OF SEC. 17 T. 1 N. R. 13 E.,
ERIN TWP., MACOMB COUNTY MICH.

LLI
LLI
63
7

RECORDED WITH
INDEX
Aug 23-1919
L. B. Lehner

Scale 500 ft. = 1 inch



DEDICATION

BEFORE ALL MEN BY THESE PRESENTS, THAT WE, M. J. LEHNER, do hereby dedicate to the public the land embraced in the annexed plat of WEBBER FARM SUBDIVISION OF PART OF N½ OF S.E.¼ OF SEC. 17 T. 1 N. R. 13 E., ERIN TWP., MACOMB COUNTY, MICH.

DESCRIPTION

THE LAND EMBRACED IN THE ANNEXED PLAT OF WEBBER FARM SUBDIVISION OF PART OF N½ OF S.E.¼ OF SEC. 17 T. 1 N. R. 13 E., ERIN TWP., MACOMB COUNTY, MICH.

1-1001

L: 7
P: 16

1922 W. J. LEHNER No. 123

Subdiv 6 Page 16

Examined and Approved
Set 29-1922
John L. Hanson

BROHL'S SUBDIVISION

OF PART OF N. 1/4 OF SE. 1/4 OF SEC. 17, T. 19 N. R. 13 E.

ERIN TOWNSHIP

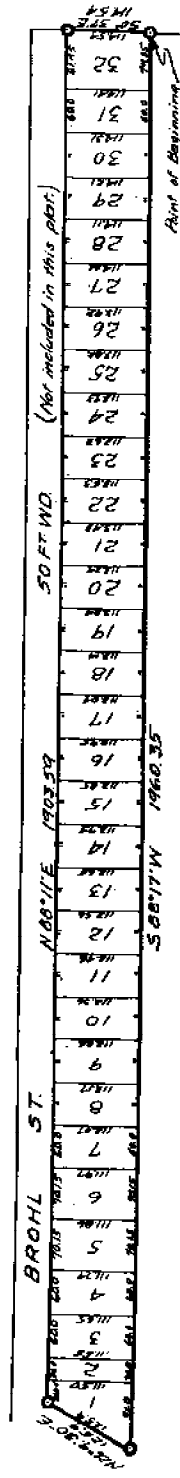
MACOMB COUNTY, MICH.

Scale - 1 in. = 150 FT.



Walter U. Lehner
Reg. Civil Engineer
Mount Clemens, Mich.

Note: All dimensions are in feet and decimals thereof.



Point of Beginning
S 88° 11' W 1400.35'
N 88° 11' E 1400.35'

S.E. Cor. Sec. 17
T. 19 N. R. 13 E.
Macomb County, Mich.

Description of Land Plotted

This land embraced in the annexed Map of **BROHL'S SUBDIVISION**, of part of N. 1/4 of SE. 1/4 of Sec. 17, T. 19 N. R. 13 E., Erin Twp., Macomb County, Mich., is divided into 32 lots, commencing at the S.E. Corner of Sec. 17, T. 19 N. R. 13 E., Erin Twp., Macomb Co., Mich., thence N 0° 37' W 1331.3 Ft. to the point of beginning; thence S 88° 11' W 1400.35 Ft.; thence N 88° 11' E 1400.35 Ft. thence

Map prepared by Walter U. Lehner, that John Brohl is the owner of the land shown on this map.
Witness my hand and seal of the public seal of the State of Michigan, this 29th day of August, 1922.
John Brohl
S. E. Cor. Sec. 17, T. 19 N. R. 13 E., Macomb County, Mich.

25	42	85	128	171	214	257	300	343	386	429	472	515	558	601	644	687	730	773	816	859	902	945	988	1031	1074	1117	1160	1203	1246	1289	1332	1375	1418	1461	1504	1547	1590	1633	1676	1719	1762	1805	1848	1891	1934	1977	2020	2063	2106	2149	2192	2235	2278	2321	2364	2407	2450	2493	2536	2579	2622	2665	2708	2751	2794	2837	2880	2923	2966	3009	3052	3095	3138	3181	3224	3267	3310	3353	3396	3439	3482	3525	3568	3611	3654	3697	3740	3783	3826	3869	3912	3955	3998	4041	4084	4127	4170	4213	4256	4299	4342	4385	4428	4471	4514	4557	4600	4643	4686	4729	4772	4815	4858	4901	4944	4987	5030	5073	5116	5159	5202	5245	5288	5331	5374	5417	5460	5503	5546	5589	5632	5675	5718	5761	5804	5847	5890	5933	5976	6019	6062	6105	6148	6191	6234	6277	6320	6363	6406	6449	6492	6535	6578	6621	6664	6707	6750	6793	6836	6879	6922	6965	7008	7051	7094	7137	7180	7223	7266	7309	7352	7395	7438	7481	7524	7567	7610	7653	7696	7739	7782	7825	7868	7911	7954	7997	8040	8083	8126	8169	8212	8255	8298	8341	8384	8427	8470	8513	8556	8599	8642	8685	8728	8771	8814	8857	8900	8943	8986	9029	9072	9115	9158	9201	9244	9287	9330	9373	9416	9459	9502	9545	9588	9631	9674	9717	9760	9803	9846	9889	9932	9975	10018	10061	10104	10147	10190	10233	10276	10319	10362	10405	10448	10491	10534	10577	10620	10663	10706	10749	10792	10835	10878	10921	10964	11007	11050	11093	11136	11179	11222	11265	11308	11351	11394	11437	11480	11523	11566	11609	11652	11695	11738	11781	11824	11867	11910	11953	11996	12039	12082	12125	12168	12211	12254	12297	12340	12383	12426	12469	12512	12555	12598	12641	12684	12727	12770	12813	12856	12899	12942	12985	13028	13071	13114	13157	13200	13243	13286	13329	13372	13415	13458	13501	13544	13587	13630	13673	13716	13759	13802	13845	13888	13931	13974	14017	14060	14103	14146	14189	14232	14275	14318	14361	14404	14447	14490	14533	14576	14619	14662	14705	14748	14791	14834	14877	14920	14963	15006	15049	15092	15135	15178	15221	15264	15307	15350	15393	15436	15479	15522	15565	15608	15651	15694	15737	15780	15823	15866	15909	15952	15995	16038	16081	16124	16167	16210	16253	16296	16339	16382	16425	16468	16511	16554	16597	16640	16683	16726	16769	16812	16855	16898	16941	16984	17027	17070	17113	17156	17199	17242	17285	17328	17371	17414	17457	17500	17543	17586	17629	17672	17715	17758	17801	17844	17887	17930	17973	18016	18059	18102	18145	18188	18231	18274	18317	18360	18403	18446	18489	18532	18575	18618	18661	18704	18747	18790	18833	18876	18919	18962	19005	19048	19091	19134	19177	19220	19263	19306	19349	19392	19435	19478	19521	19564	19607	19650	19693	19736	19779	19822	19865	19908	19951	19994	20037	20080	20123	20166	20209	20252	20295	20338	20381	20424	20467	20510	20553	20596	20639	20682	20725	20768	20811	20854	20897	20940	20983	21026	21069	21112	21155	21198	21241	21284	21327	21370	21413	21456	21499	21542	21585	21628	21671	21714	21757	21800	21843	21886	21929	21972	22015	22058	22101	22144	22187	22230	22273	22316	22359	22402	22445	22488	22531	22574	22617	22660	22703	22746	22789	22832	22875	22918	22961	23004	23047	23090	23133	23176	23219	23262	23305	23348	23391	23434	23477	23520	23563	23606	23649	23692	23735	23778	23821	23864	23907	23950	23993	24036	24079	24122	24165	24208	24251	24294	24337	24380	24423	24466	24509	24552	24595	24638	24681	24724	24767	24810	24853	24896	24939	24982	25025	25068	25111	25154	25197	25240	25283	25326	25369	25412	25455	25498	25541	25584	25627	25670	25713	25756	25799	25842	25885	25928	25971	26014	26057	26100	26143	26186	26229	26272	26315	26358	26401	26444	26487	26530	26573	26616	26659	26702	26745	26788	26831	26874	26917	26960	27003	27046	27089	27132	27175	27218	27261	27304	27347	27390	27433	27476	27519	27562	27605	27648	27691	27734	27777	27820	27863	27906	27949	27992	28035	28078	28121	28164	28207	28250	28293	28336	28379	28422	28465	28508	28551	28594	28637	28680	28723	28766	28809	28852	28895	28938	28981	29024	29067	29110	29153	29196	29239	29282	29325	29368	29411	29454	29497	29540	29583	29626	29669	29712	29755	29798	29841	29884	29927	29970	30013	30056	30099	30142	30185	30228	30271	30314	30357	30400	30443	30486	30529	30572	30615	30658	30701	30744	30787	30830	30873	30916	30959	31002	31045	31088	31131	31174	31217	31260	31303	31346	31389	31432	31475	31518	31561	31604	31647	31690	31733	31776	31819	31862	31905	31948	31991	32034	32077	32120	32163	32206	32249	32292	32335	32378	32421	32464	32507	32550	32593	32636	32679	32722	32765	32808	32851	32894	32937	32980	33023	33066	33109	33152	33195	33238	33281	33324	33367	33410	33453	33496	33539	33582	33625	33668	33711	33754	33797	33840	33883	33926	33969	34012	34055	34098	34141	34184	34227	34270	34313	34356	34399	34442	34485	34528	34571	34614	34657	34700	34743	34786	34829	34872	34915	34958	35001	35044	35087	35130	35173	35216	35259	35302	35345	35388	35431	35474	35517	35560	35603	35646	35689	35732	35775	35818	35861	35904	35947	35990	36033	36076	36119	36162	36205	36248	36291	36334	36377	36420	36463	36506	36549	36592	36635	36678	36721	36764	36807	36850	36893	36936	36979	37022	37065	37108	37151	37194	37237	37280	37323	37366	37409	37452	37495	37538	37581	37624	37667	37710	37753	37796	37839	37882	37925	37968	38011	38054	38097	38140	38183	38226	38269	38312	38355	38398	38441	38484	38527	38570	38613	38656	38699	38742	38785	38828	38871	38914	38957	39000	39043	39086	39129	39172	39215	39258	39301	39344	39387	39430	39473	39516	39559	39602	39645	39688	39731	39774	39817	39860	39903	39946	39989	40032	40075	40118	40161	40204	40247	40290	40333	40376	40419	40462	40505	40548	40591	40634	40677	40720	40763	40806	40849	40892	40935	40978	41021	41064	41107	41150	41193	41236	41279	41322	41365	41408	41451	41494	41537	41580	41623	41666	41709	41752	41795	41838	41881	41924	41967	42010	42053	42096	42139	42182	42225	42268	42311	42354	42397	42440	42483	42526	42569	42612	42655	42698	42741	42784	42827	42870	42913	42956	42999	43042	43085	43128	43171	43214	43257	43300	43343	43386	43429	43472	43515	43558	43601	43644	43687	43730	43773	43816	43859	43902	43945	43988	44031	44074	44117	44160	44203	44246	44289	44332	44375	44418	44461	44504	44547	44590	44633	44676	44719	44762	44805	44848	44891	44934	44977	45020	45063	45106	45149	45192	45235	45278	45321	45364	45407	45450	45493	45536	45579	45622	45665	45708	45751	45794	45837	45880	45923	45966	46009	46052	46095	46138	46181	46224	46267	46310	46353	46396	46439	46482	46525	46568	46611	46654	46697	46740	46783	46826	46869	46912	46955	46998	47041	47084	47127	47170	47213	47256	47299	47342	47385	47428	47471	47514	47557	47600	47643	47686	47729	47772	47815	47858	47901	47944	47987	48030	48073	48116	48159	48202	48245	48288	48331	48374	48417	48460	48503	48546	48589	48632	48675	48718	48761	48804	48847	48890	48933	48976	49019	49062	49105	49148	49191	49234	49277	49320	49363	49406	49449	49492	49535	49578	49621	49664	49707	49750	49793	49836	49879	49922	49965	50008	50051	50094	50137	50180	50223	50266	50309	50352	50395	50438	50481	50524	50567	50610	50653	50696	50739	50782	50825	50868	50911	50954	50997	51040	51083	51126	51169	51212	51255	51298	51341	51384	51427	51470	51513	51556	51599	51642	51685	51728	51771	51814	51857	51900	51943	51986	52029	52072	52115	52158	52201	52244	52287	52330	52373	52416	52459	52502	52545	52588	52631	52674	52717	52760	52803	52846	52889	52932	52975	53018	53061	53104	53147	53190	53233	53276	53319	53362	53405	53448	53491	53534	53577	53620	53663	53706	53749	53792	53835	53878	53921	53964	54007</
----	----	----	-----	-----	-----	-----	-----	-----	-----	-----	-----	-----	-----	-----	-----	-----	-----	-----	-----	-----	-----	-----	-----	------	------	------	------	------	------	------	------	------	------	------	------	------	------	------	------	------	------	------	------	------	------	------	------	------	------	------	------	------	------	------	------	------	------	------	------	------	------	------	------	------	------	------	------	------	------	------	------	------	------	------	------	------	------	------	------	------	------	------	------	------	------	------	------	------	------	------	------	------	------	------	------	------	------	------	------	------	------	------	------	------	------	------	------	------	------	------	------	------	------	------	------	------	------	------	------	------	------	------	------	------	------	------	------	------	------	------	------	------	------	------	------	------	------	------	------	------	------	------	------	------	------	------	------	------	------	------	------	------	------	------	------	------	------	------	------	------	------	------	------	------	------	------	------	------	------	------	------	------	------	------	------	------	------	------	------	------	------	------	------	------	------	------	------	------	------	------	------	------	------	------	------	------	------	------	------	------	------	------	------	------	------	------	------	------	------	------	------	------	------	------	------	------	------	------	------	------	------	------	------	------	------	------	------	------	------	------	------	------	-------	-------	-------	-------	-------	-------	-------	-------	-------	-------	-------	-------	-------	-------	-------	-------	-------	-------	-------	-------	-------	-------	-------	-------	-------	-------	-------	-------	-------	-------	-------	-------	-------	-------	-------	-------	-------	-------	-------	-------	-------	-------	-------	-------	-------	-------	-------	-------	-------	-------	-------	-------	-------	-------	-------	-------	-------	-------	-------	-------	-------	-------	-------	-------	-------	-------	-------	-------	-------	-------	-------	-------	-------	-------	-------	-------	-------	-------	-------	-------	-------	-------	-------	-------	-------	-------	-------	-------	-------	-------	-------	-------	-------	-------	-------	-------	-------	-------	-------	-------	-------	-------	-------	-------	-------	-------	-------	-------	-------	-------	-------	-------	-------	-------	-------	-------	-------	-------	-------	-------	-------	-------	-------	-------	-------	-------	-------	-------	-------	-------	-------	-------	-------	-------	-------	-------	-------	-------	-------	-------	-------	-------	-------	-------	-------	-------	-------	-------	-------	-------	-------	-------	-------	-------	-------	-------	-------	-------	-------	-------	-------	-------	-------	-------	-------	-------	-------	-------	-------	-------	-------	-------	-------	-------	-------	-------	-------	-------	-------	-------	-------	-------	-------	-------	-------	-------	-------	-------	-------	-------	-------	-------	-------	-------	-------	-------	-------	-------	-------	-------	-------	-------	-------	-------	-------	-------	-------	-------	-------	-------	-------	-------	-------	-------	-------	-------	-------	-------	-------	-------	-------	-------	-------	-------	-------	-------	-------	-------	-------	-------	-------	-------	-------	-------	-------	-------	-------	-------	-------	-------	-------	-------	-------	-------	-------	-------	-------	-------	-------	-------	-------	-------	-------	-------	-------	-------	-------	-------	-------	-------	-------	-------	-------	-------	-------	-------	-------	-------	-------	-------	-------	-------	-------	-------	-------	-------	-------	-------	-------	-------	-------	-------	-------	-------	-------	-------	-------	-------	-------	-------	-------	-------	-------	-------	-------	-------	-------	-------	-------	-------	-------	-------	-------	-------	-------	-------	-------	-------	-------	-------	-------	-------	-------	-------	-------	-------	-------	-------	-------	-------	-------	-------	-------	-------	-------	-------	-------	-------	-------	-------	-------	-------	-------	-------	-------	-------	-------	-------	-------	-------	-------	-------	-------	-------	-------	-------	-------	-------	-------	-------	-------	-------	-------	-------	-------	-------	-------	-------	-------	-------	-------	-------	-------	-------	-------	-------	-------	-------	-------	-------	-------	-------	-------	-------	-------	-------	-------	-------	-------	-------	-------	-------	-------	-------	-------	-------	-------	-------	-------	-------	-------	-------	-------	-------	-------	-------	-------	-------	-------	-------	-------	-------	-------	-------	-------	-------	-------	-------	-------	-------	-------	-------	-------	-------	-------	-------	-------	-------	-------	-------	-------	-------	-------	-------	-------	-------	-------	-------	-------	-------	-------	-------	-------	-------	-------	-------	-------	-------	-------	-------	-------	-------	-------	-------	-------	-------	-------	-------	-------	-------	-------	-------	-------	-------	-------	-------	-------	-------	-------	-------	-------	-------	-------	-------	-------	-------	-------	-------	-------	-------	-------	-------	-------	-------	-------	-------	-------	-------	-------	-------	-------	-------	-------	-------	-------	-------	-------	-------	-------	-------	-------	-------	-------	-------	-------	-------	-------	-------	-------	-------	-------	-------	-------	-------	-------	-------	-------	-------	-------	-------	-------	-------	-------	-------	-------	-------	-------	-------	-------	-------	-------	-------	-------	-------	-------	-------	-------	-------	-------	-------	-------	-------	-------	-------	-------	-------	-------	-------	-------	-------	-------	-------	-------	-------	-------	-------	-------	-------	-------	-------	-------	-------	-------	-------	-------	-------	-------	-------	-------	-------	-------	-------	-------	-------	-------	-------	-------	-------	-------	-------	-------	-------	-------	-------	-------	-------	-------	-------	-------	-------	-------	-------	-------	-------	-------	-------	-------	-------	-------	-------	-------	-------	-------	-------	-------	-------	-------	-------	-------	-------	-------	-------	-------	-------	-------	-------	-------	-------	-------	-------	-------	-------	-------	-------	-------	-------	-------	-------	-------	-------	-------	-------	-------	-------	-------	-------	-------	-------	-------	-------	-------	-------	-------	-------	-------	-------	-------	-------	-------	-------	-------	-------	-------	-------	-------	-------	-------	-------	-------	-------	-------	-------	-------	-------	-------	-------	-------	-------	-------	-------	-------	-------	-------	-------	-------	-------	-------	-------	-------	-------	-------	-------	-------	-------	-------	-------	-------	-------	-------	-------	-------	-------	-------	-------	-------	-------	-------	-------	-------	-------	-------	-------	-------	-------	-------	-------	-------	-------	-------	-------	-------	-------	-------	-------	-------	-------	-------	-------	-------	-------	-------	-------	-------	-------	-------	-------	-------	-------	-------	-------	-------	-------	-------	-------	-------	-------	-------	-------	-------	-------	-------	-------	-------	-------	-------	-------	-------	-------	-------	-------	-------	-------	-------	-------	-------	-------	-------	-------	-------	-------	-------	-------	-------	-------	-------	-------	-------	-------	-------	-------	-------	-------	-------	-------	-------	-------	-------	-------	-------	-------	-------	-------	-------	-------	-------	-------	-------	-------	-------	-------	-------	-------	-------	-------	-------	-------	-------	-------	-------	-------	-------	-------	-------	-------	-------	-------	-------	-------	-------	-------	-------	-------	-------	-------	-------	-------	-------	-------	-------	-------	-------	-------	-------	-------	-------	-------	-------	-------	-------	-------	-------	-------	-------	-------	-------	-------	-------	-------	-------	-------	-------	-------	-------	-------	-------	-------	-------	-------	-------	-------	-------	-------	-------	-------	-------	-------	-------	-------	-------	-------	-------	-------	-------	-------	-------	-------	-------	-------	-------	-------	-------	-------	-------	-------	-------	-------	-------	-------	-------	-------	-------	-------	-------	-------	-------	-------	-------	-------	-------	-------	-------	-------	-------	-------	-------	-------	-------	-------	-------	-------	-------	-------	-------	-------	-------	-------	-------	-------	-------	-------	-------	-------	-------	-------	-------	-------	-------	-------	-------	-------	-------	-------	-------	-------	-------	-------	-------	-------	-------	-------	-------	-------	-------	-------	-------	-------	-------	-------	-------	-------	-------	-------	-------	-------	-------	-------	-------	-------	-------	-------	-------	-------	-------	-------	-------	-------	-------	-------	-------	-------	-------	-------	-------	-------	-------	-------	-------	-------	-------	-------	-------	-------	-------	-------	-------	-------	-------	-------	-------	-------	-------	-------	-------	-------	-------	-------	-------	-------	-------	-------	-------	-------	-------	-------	-------	-------	-------	-------	-------	-------	-------	-------	-------	-------	-------	-------	-------	-------	-------	-------	-------	-------	-------	-------	-------	-------	-------	-------	-------	-------	-------	-------	-------	-------	-------	-------	-------	-------	-------	-------	-------	-------	-------	---------

E-7

L.6
P.50

1923 B.T. Coleman (C.C.)

January 3-1923
B.T. Coleman

PIPER'S ROSEVILLE CITY

A SUBDIVISION OF
A PART OF THE S 1/4 OF SEC. 17, T. 14 N., R. 13 E.,
ERIN TWP., MACOMB CO.,
MICHIGAN

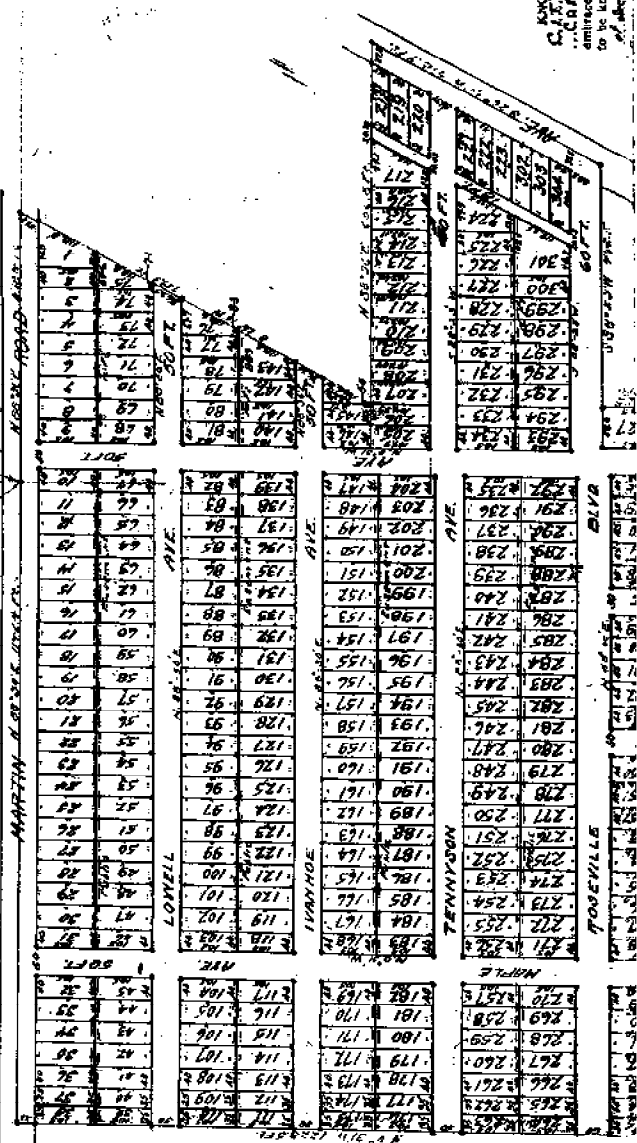
Scale 1 in = 200 ft

All dimensions are in feet and decimals thereof.

Blair Johnson
1/10/23



the following corners
shown on a plat of
the



KNOW ALL MEN BY THESE PRESENTS THAT ROSEVILLE CITY, A CITY OF THE STATE OF MICHIGAN, HAS CAUSED TO BE LAYED OUT AND PLATTED THE ABOVE DESCRIBED PLAT TO BE SURVEYED, AND OUT AND PLATTED TO BE KNOWN AS "PIPER'S ROSEVILLE CITY" IN ACCORDANCE WITH THE ACT OF MARCH 12, 1911, P. 1752, ENR. THESE PRESENTS BEING THE ORIGINAL RECORD OF SAID PLAT.



E-06

97
P70

1922

W. J. LENNER No. 123

John & Rose To

"STOEPPEL'S

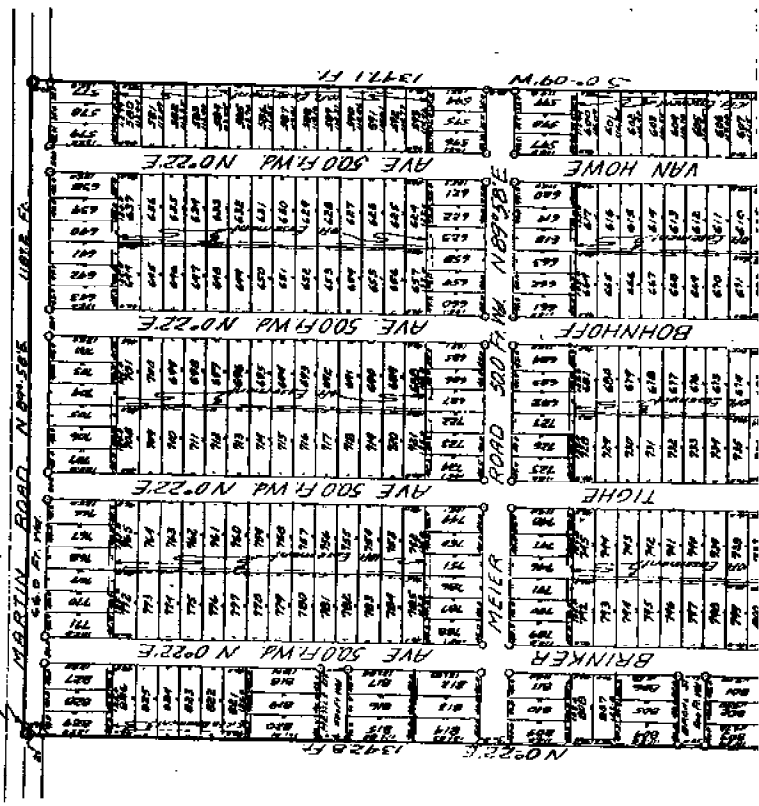
MARTIN ROAD SUBDIVISION NO. 1

OF N.W. 1/4 OF SW. 1/4 OF SEC. 16 AND PART OF NE. 1/4
OF SE. 1/4 OF SEC. 17, T. 17 N. R. 13 E. ERIN TWP.,
MACOMB COUNTY, MICH.

Scale - 1" = 200 FT

Meiner U. Lehner
Reg. Civil Eng.
Mount Clemens Mich

W. J. Post Sec. 16
T. 17 N. R. 13 E. Erin Twp. Macomb Co. Mich.
Point of Beginning



RECORDED IN
JUL 9 1923
L. H. HANSEN

Approved by County Clerk, Macomb Co. Mich.

STOEPPEL'S
MARTIN ROAD SUBDIVISION NO. 1 OF N.W. 1/4 OF SW. 1/4 OF
SEC. 16 AND PART OF NE. 1/4 OF SE. 1/4 OF SEC. 17, T. 17 N. R. 13 E.
ERIN TWP., MACOMB CO. MICH.

Subscribed and sworn to before me this _____ day of _____ 1923.
Notary Public
Subscribed and sworn to before me this _____ day of _____ 1923.
Notary Public

BR	794	793	792	791	790	789	788	787	786	785	784	783	782	781	780	779	778	777	776	775	774	773	772	771	770	769	768	767	766	765	764	763	762	761	760	759	758	757	756	755	754	753	752	751	750	749	748	747	746	745	744	743	742	741	740	739	738	737	736	735	734	733	732	731	730	729	728	727	726	725	724	723	722	721	720	719	718	717	716	715	714	713	712	711	710	709	708	707	706	705	704	703	702	701	700	699	698	697	696	695	694	693	692	691	690	689	688	687	686	685	684	683	682	681	680	679	678	677	676	675	674	673	672	671	670	669	668	667	666	665	664	663	662	661	660	659	658	657	656	655	654	653	652	651	650	649	648	647	646	645	644	643	642	641	640	639	638	637	636	635	634	633	632	631	630	629	628	627	626	625	624	623	622	621	620	619	618	617	616	615	614	613	612	611	610	609	608	607	606	605	604	603	602	601	600	599	598	597	596	595	594	593	592	591	590	589	588	587	586	585	584	583	582	581	580	579	578	577	576	575	574	573	572	571	570	569	568	567	566	565	564	563	562	561	560	559	558	557	556	555	554	553	552	551	550	549	548	547	546	545	544	543	542	541	540	539	538	537	536	535	534	533	532	531	530	529	528	527	526	525	524	523	522	521	520	519	518	517	516	515	514	513	512	511	510	509	508	507	506	505	504	503	502	501	500	499	498	497	496	495	494	493	492	491	490	489	488	487	486	485	484	483	482	481	480	479	478	477	476	475	474	473	472	471	470	469	468	467	466	465	464	463	462	461	460	459	458	457	456	455	454	453	452	451	450	449	448	447	446	445	444	443	442	441	440	439	438	437	436	435	434	433	432	431	430	429	428	427	426	425	424	423	422	421	420	419	418	417	416	415	414	413	412	411	410	409	408	407	406	405	404	403	402	401	400	399	398	397	396	395	394	393	392	391	390	389	388	387	386	385	384	383	382	381	380	379	378	377	376	375	374	373	372	371	370	369	368	367	366	365	364	363	362	361	360	359	358	357	356	355	354	353	352	351	350	349	348	347	346	345	344	343	342	341	340	339	338	337	336	335	334	333	332	331	330	329	328	327	326	325	324	323	322	321	320	319	318	317	316	315	314	313	312	311	310	309	308	307	306	305	304	303	302	301	300	299	298	297	296	295	294	293	292	291	290	289	288	287	286	285	284	283	282	281	280	279	278	277	276	275	274	273	272	271	270	269	268	267	266	265	264	263	262	261	260	259	258	257	256	255	254	253	252	251	250	249	248	247	246	245	244	243	242	241	240	239	238	237	236	235	234	233	232	231	230	229	228	227	226	225	224	223	222	221	220	219	218	217	216	215	214	213	212	211	210	209	208	207	206	205	204	203	202	201	200	199	198	197	196	195	194	193	192	191	190	189	188	187	186	185	184	183	182	181	180	179	178	177	176	175	174	173	172	171	170	169	168	167	166	165	164	163	162	161	160	159	158	157	156	155	154	153	152	151	150	149	148	147	146	145	144	143	142	141	140	139	138	137	136	135	134	133	132	131	130	129	128	127	126	125	124	123	122	121	120	119	118	117	116	115	114	113	112	111	110	109	108	107	106	105	104	103	102	101	100	99	98	97	96	95	94	93	92	91	90	89	88	87	86	85	84	83	82	81	80	79	78	77	76	75	74	73	72	71	70	69	68	67	66	65	64	63	62	61	60	59	58	57	56	55	54	53	52	51	50	49	48	47	46	45	44	43	42	41	40	39	38	37	36	35	34	33	32	31	30	29	28	27	26	25	24	23	22	21	20	19	18	17	16	15	14	13	12	11	10	9	8	7	6	5	4	3	2	1	0
----	-----	-----	-----	-----	-----	-----	-----	-----	-----	-----	-----	-----	-----	-----	-----	-----	-----	-----	-----	-----	-----	-----	-----	-----	-----	-----	-----	-----	-----	-----	-----	-----	-----	-----	-----	-----	-----	-----	-----	-----	-----	-----	-----	-----	-----	-----	-----	-----	-----	-----	-----	-----	-----	-----	-----	-----	-----	-----	-----	-----	-----	-----	-----	-----	-----	-----	-----	-----	-----	-----	-----	-----	-----	-----	-----	-----	-----	-----	-----	-----	-----	-----	-----	-----	-----	-----	-----	-----	-----	-----	-----	-----	-----	-----	-----	-----	-----	-----	-----	-----	-----	-----	-----	-----	-----	-----	-----	-----	-----	-----	-----	-----	-----	-----	-----	-----	-----	-----	-----	-----	-----	-----	-----	-----	-----	-----	-----	-----	-----	-----	-----	-----	-----	-----	-----	-----	-----	-----	-----	-----	-----	-----	-----	-----	-----	-----	-----	-----	-----	-----	-----	-----	-----	-----	-----	-----	-----	-----	-----	-----	-----	-----	-----	-----	-----	-----	-----	-----	-----	-----	-----	-----	-----	-----	-----	-----	-----	-----	-----	-----	-----	-----	-----	-----	-----	-----	-----	-----	-----	-----	-----	-----	-----	-----	-----	-----	-----	-----	-----	-----	-----	-----	-----	-----	-----	-----	-----	-----	-----	-----	-----	-----	-----	-----	-----	-----	-----	-----	-----	-----	-----	-----	-----	-----	-----	-----	-----	-----	-----	-----	-----	-----	-----	-----	-----	-----	-----	-----	-----	-----	-----	-----	-----	-----	-----	-----	-----	-----	-----	-----	-----	-----	-----	-----	-----	-----	-----	-----	-----	-----	-----	-----	-----	-----	-----	-----	-----	-----	-----	-----	-----	-----	-----	-----	-----	-----	-----	-----	-----	-----	-----	-----	-----	-----	-----	-----	-----	-----	-----	-----	-----	-----	-----	-----	-----	-----	-----	-----	-----	-----	-----	-----	-----	-----	-----	-----	-----	-----	-----	-----	-----	-----	-----	-----	-----	-----	-----	-----	-----	-----	-----	-----	-----	-----	-----	-----	-----	-----	-----	-----	-----	-----	-----	-----	-----	-----	-----	-----	-----	-----	-----	-----	-----	-----	-----	-----	-----	-----	-----	-----	-----	-----	-----	-----	-----	-----	-----	-----	-----	-----	-----	-----	-----	-----	-----	-----	-----	-----	-----	-----	-----	-----	-----	-----	-----	-----	-----	-----	-----	-----	-----	-----	-----	-----	-----	-----	-----	-----	-----	-----	-----	-----	-----	-----	-----	-----	-----	-----	-----	-----	-----	-----	-----	-----	-----	-----	-----	-----	-----	-----	-----	-----	-----	-----	-----	-----	-----	-----	-----	-----	-----	-----	-----	-----	-----	-----	-----	-----	-----	-----	-----	-----	-----	-----	-----	-----	-----	-----	-----	-----	-----	-----	-----	-----	-----	-----	-----	-----	-----	-----	-----	-----	-----	-----	-----	-----	-----	-----	-----	-----	-----	-----	-----	-----	-----	-----	-----	-----	-----	-----	-----	-----	-----	-----	-----	-----	-----	-----	-----	-----	-----	-----	-----	-----	-----	-----	-----	-----	-----	-----	-----	-----	-----	-----	-----	-----	-----	-----	-----	-----	-----	-----	-----	-----	-----	-----	-----	-----	-----	-----	-----	-----	-----	-----	-----	-----	-----	-----	-----	-----	-----	-----	-----	-----	-----	-----	-----	-----	-----	-----	-----	-----	-----	-----	-----	-----	-----	-----	-----	-----	-----	-----	-----	-----	-----	-----	-----	-----	-----	-----	-----	-----	-----	-----	-----	-----	-----	-----	-----	-----	-----	-----	-----	-----	-----	-----	-----	-----	-----	-----	-----	-----	-----	-----	-----	-----	-----	-----	-----	-----	-----	-----	-----	-----	-----	-----	-----	-----	-----	-----	-----	-----	-----	-----	-----	-----	-----	-----	-----	-----	-----	-----	-----	-----	-----	-----	-----	-----	-----	-----	-----	-----	-----	-----	-----	-----	-----	-----	-----	-----	-----	-----	-----	-----	-----	-----	-----	-----	-----	-----	-----	-----	-----	-----	-----	-----	-----	-----	-----	-----	-----	-----	-----	-----	-----	-----	-----	-----	-----	-----	-----	-----	-----	-----	-----	-----	-----	-----	-----	-----	-----	-----	-----	-----	-----	-----	-----	-----	-----	-----	-----	-----	-----	-----	-----	-----	-----	-----	-----	-----	-----	-----	-----	-----	-----	-----	-----	-----	-----	-----	-----	-----	-----	-----	-----	----	----	----	----	----	----	----	----	----	----	----	----	----	----	----	----	----	----	----	----	----	----	----	----	----	----	----	----	----	----	----	----	----	----	----	----	----	----	----	----	----	----	----	----	----	----	----	----	----	----	----	----	----	----	----	----	----	----	----	----	----	----	----	----	----	----	----	----	----	----	----	----	----	----	----	----	----	----	----	----	----	----	----	----	----	----	----	----	----	----	---	---	---	---	---	---	---	---	---	---

31st
 2
 Clements, Mich.

and dead
 Elizabeth Engelman
 Macomb Co, Mich
 Jan 4 1925

Continuation of Land Plat
 MARTIN ROAD, SUBDIVISION OF LAND IN SECTION 16 & 17 T19N R13E
 Sec 16 and part of N.E. 1/4 of S.E. 1/4 of Sec 17 T19N R13E
 Erin Twp, Macomb Co Mich, is described as follows:
 Beginning on the W. 1/4 Part of Sec 16, T19N R13E
 Erin Twp, Macomb Co Mich and thence extending
 N 89° 58' E 1185.2 Ft along the center of Martin Rd.
 (So called); thence 50° 00' W 1349.1 Ft; thence
 N 89° 49' W 1078 Ft; thence N 89° 49' W 415 Ft;
 thence N 0° 22' E 1342.8 Ft; thence N 89° 58' E
 20 Ft to the Point of Beginning.

RECORDER'S OFFICE
 COURT OF MACOMB
 Recd for Record
 July 1st 1925
 in Lib. Co. of Plates
 on 1925
 J. C. Whiting

1925
 1925
 1925

Eng. Civil Engr.

1923
 1923
 1923

SECURITY TREASURER'S CERTIFICATE
 This is to certify that there are no Tax Liens or Taxes due
 by the State or any individual upon and that all Taxes on all
 described in the annexed returns have been paid FIVE (5) Dollars
 more to the State therefor, according to the Order
 of the State Treasurer
 J. C. Whiting

[E-06]

731

1924

W. J. LEHNER No. 123

SCHRAM & GINLEY SUBDIVISION

E.K. OF THE SW. 1/4 OF THE N.W. 1/4 OF SEC 16 T.14.N.R. 13E.
ERIN TWP. MACOMB CO. MICHIGAN

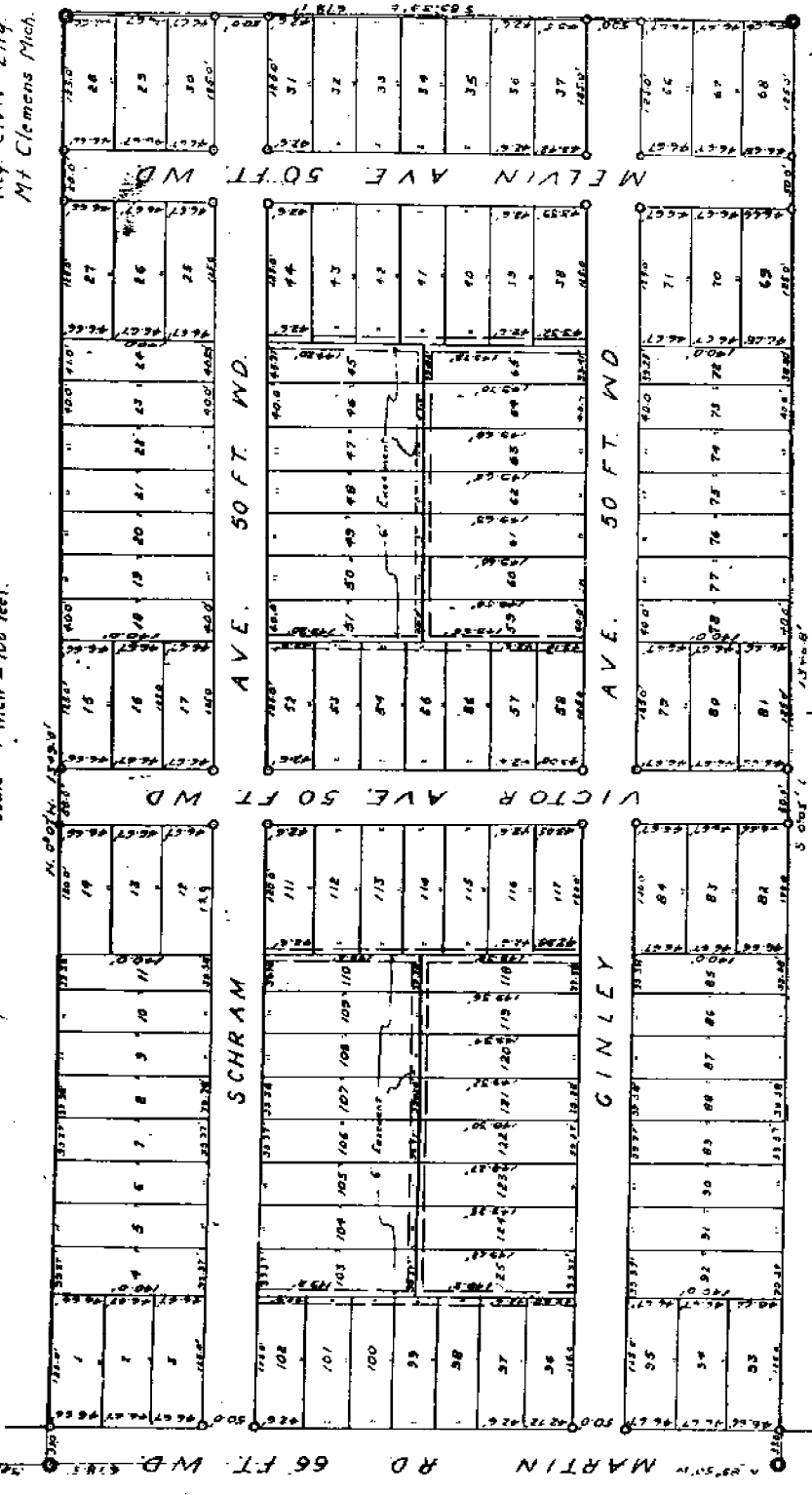
July 12-1924
W. J. Lehner

Walter J. Lehner
Reg. Civil Eng.
Mt. Clemens Mich.

Point of Beg.
with Post of Sec. 16
T. 14. N. R. 13. E.

731

Scale 1 inch = 100 feet.



Witness and Seals in Presence of
W. H. ...
.....

Michael Meale
Michael Meale
..... (L.S.)
..... (L.S.)

STATE OF MICHIGAN, } ss.
County of Macomb. }

On this 12th day of ... 1924 before me, a Notary Public
I saw the above named Michael Meale and Mar-
tinet Meale his wife, known to me to be the persons who executed the above docu-
ment, and acknowledged the same to be their free act and deed.

W. H. ...
Notary Public, Macomb Co., Mich.
My Commission expires 1924 11 27

CERTIFICATE OF TOWNSHIP BOARD.

This plat was approved by the Township Board of the Township of ... at a
meeting held.....

.....
Clerk.

CERTIFICATE OF COUNTY BOARD.

This plat was approved on the ... day of ... 1924

E-64

30 20
7 2

1924

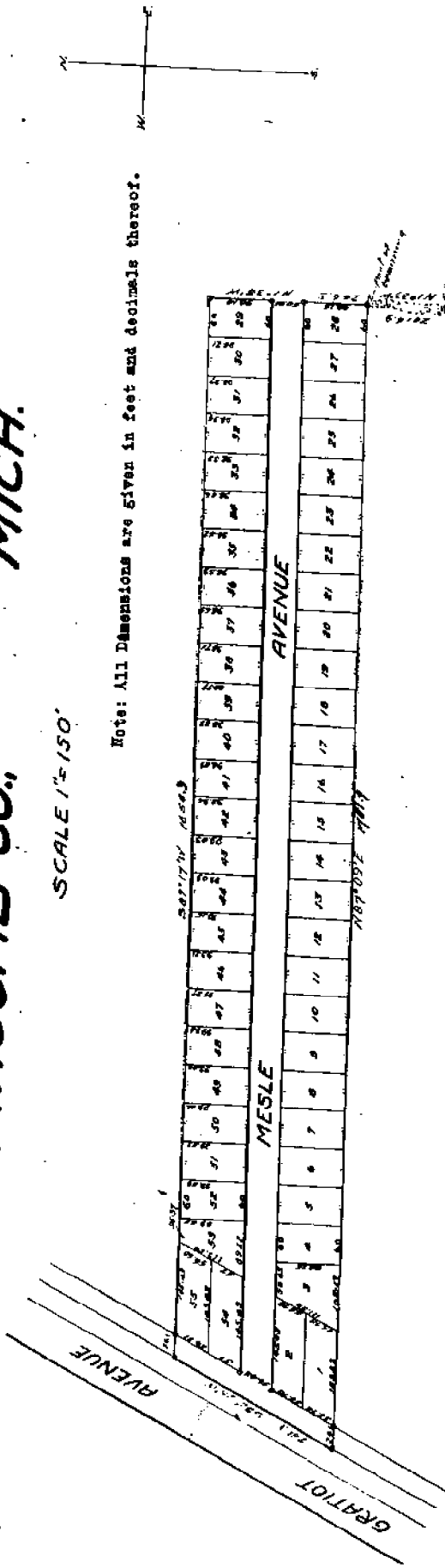
H. R. O'MARA

MESLE'S SUBDIVISION
 OF PART OF
N. 1/2 OF S. E. 1/4 OF SEC. 17, T. 1 N. R. 13 E.
MACOMB CO., MICH.

Dec 12 1924
E. R. O'MARA

SCALE 1"=150'

Note: All Dimensions are given in feet and decimals thereof.



DEDICATION.

BEFORE ME BY JAMES MESLE, That we Michael Mesle, as proprietor, and Margaret Mesle, his wife, have caused the land embraced in the annexed plat to be surveyed, laid out and platted, to be known as "MESLE'S SUBDIVISION" of part of S. E. 1/4 of Sec. 17, T. 1 N. R. 13 E., Macomb Co., Mich. and that the streets shown on said plat are hereby dedicated to the use of the public.

Witness my hand and seal, in Presence of
 _____ (I.S.)
 _____ (I.S.)
 _____ (I.S.)

STATE OF MICHIGAN,)
 County of Macomb.) ss.

I, in this _____ day of _____ 1924, before me, a Notary Public in and for said county, personally knew the above named Michael Mesle and Margaret Mesle his wife, known to me to be the persons who _____

ENGINEER'S CERTIFICATE.

I hereby certify that the plat herein delineated is a correct one, and that permanent monuments, consisting of 2" iron gaspips, 18" long, have been planted at points marked thus (o) as thereon shown at all angles in the boundaries of the land platted, and at all intersections of streets.

 Registered Civil Engineer.

CONFIRMED BY THEIR BOARD.

This plat was approved by the Township Board of the Township of Brin at a meeting held.....

15-03

L.B. 898

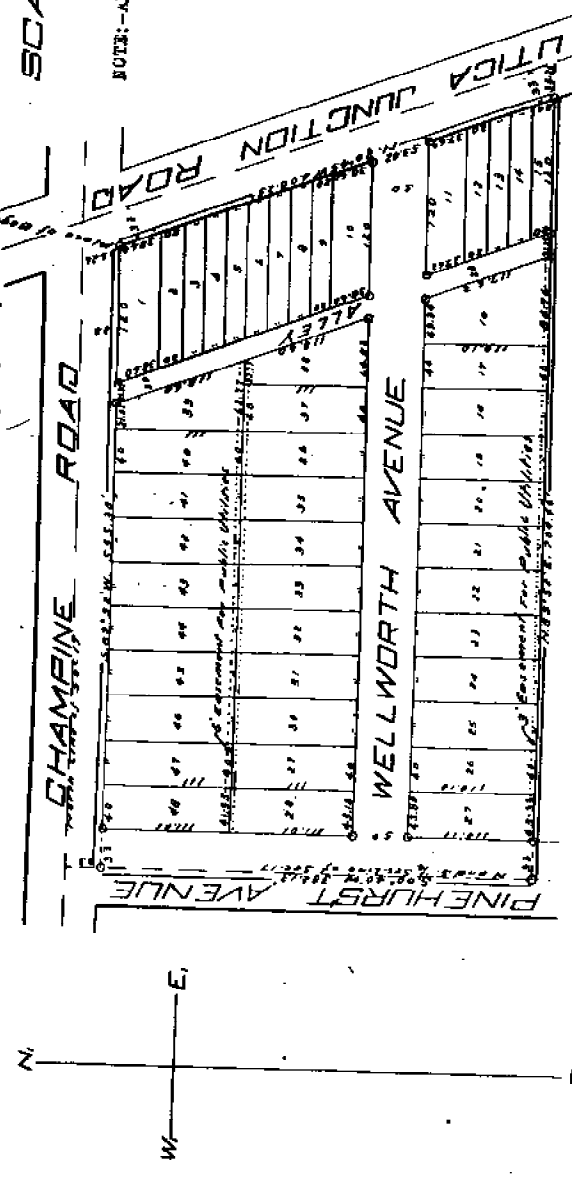
1924 J.W. IRWIN (C.E.)

Dec 4-1924
J. L. Hurst

OAK VIEW SUBDIVISION

OF PART OF SECTION 17 T. 1 N. R. 18 E.
MACOMB COUNTY MICHIGAN

SCALE 100' = 1"



NOTE:—All dimensions on this plat are in feet and decimals thereof.

DEDICATION

KNOW ALL MEN BY THESE PRESENTS, That we, Minnie Hartman, a widow, August Peters and said Peters, his wife, and William J. June and Elizabeth L. June, his wife as proprietors have caused the land embraced in the annexed plat to be surveyed laid out and platted to be known as 'OAK VIEW SUBDIVISION' OF PART OF SECTION 17, T. 1 N. R. 18 E. MACOMB COUNTY MICHIGAN and that the streets, alley and easements as shown on said plat are hereby dedicated to the use of the public.

Signed and Sealed in Presence of

COUNTY TREASURER'S CERTIFICATION.

Office of the County Treasurer, *Nov. 15, 1924* Macomb Co. Mich.

Hereby certify that there are no tax liens or titles here by the State on the lands described on the annexed plat and that there are no tax liens or titles held by individuals on said lands for the five years preceding the 1st day of October 1924.

L. 8
P. 96

1925

A
H. R. CORDERA (C.E.)

Yakima & Lake 96

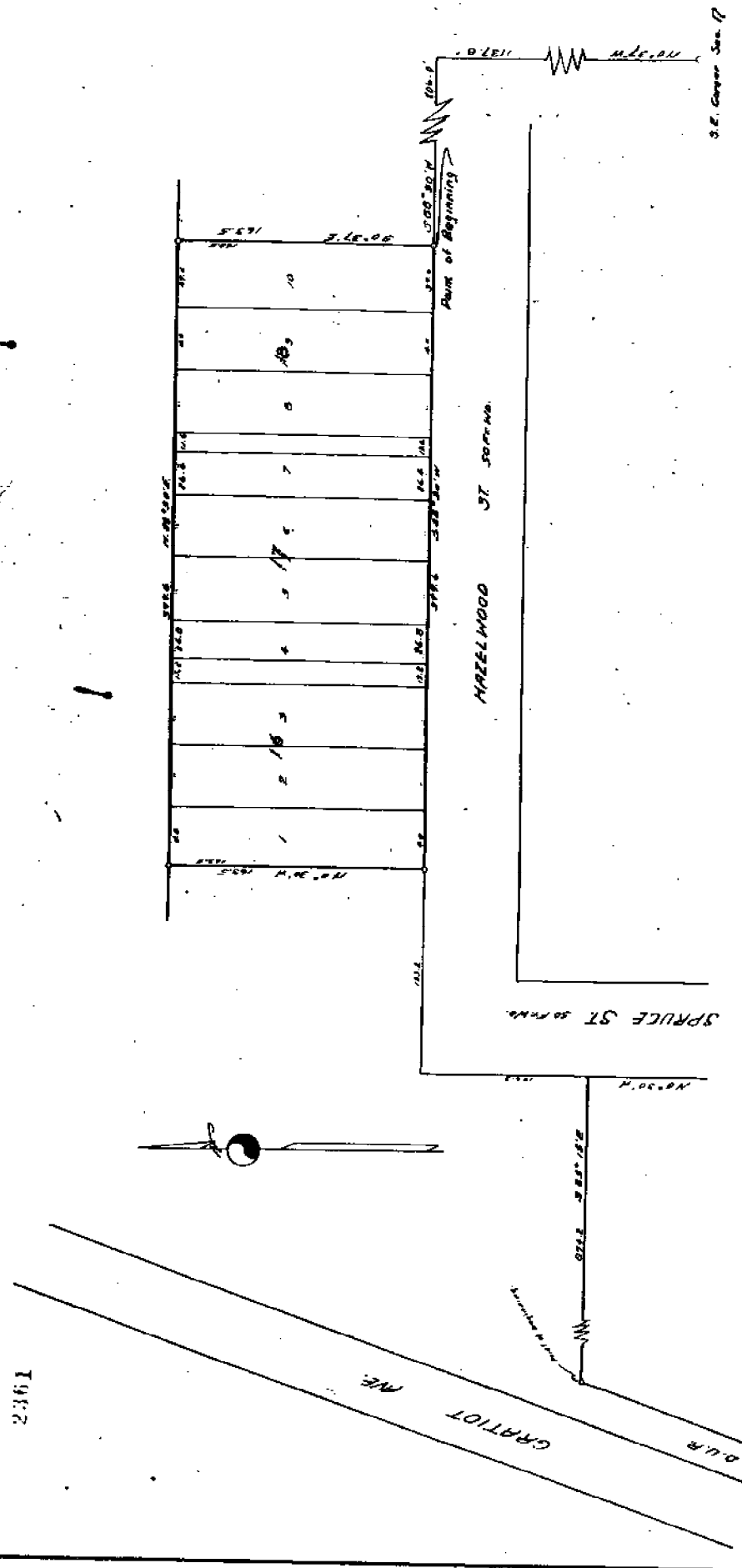
8/1-1925
L. R. CORDERA

SHEA — SUBDIVISION.

LOTS 16-17-18 OF ROSEVILLE FARMS SUBDIVISION No 4 T. 1 N. R. 13 E.
OF TWP. 34 OF THE S. 4 OF SEC. 11,
+ ERIN. TWP. - MACOMB. CO. - MICH. +

SCALE - 1 inch = 60 feet

2361



DEDICATION
BY THE BOARD OF SUPERVISORS
OF THE COUNTY OF MACOMB
MICHIGAN
1925

DEDICATION
 WHEREAS BY THEIR PRESENTS: That we LOUISA SHEA
 the wife of John W. Shea as proprietors have caused
 the land embraced in the annexed plat to be surveyed, laid
 out and platted to be known as SEA SUBDIVISION of part of
 lots 15-17-18 of Roseville Farms Subdivision No. 4 of part
 of the SE of the S1/4 of Sec. 17, T. 1 N., R. 18 E., Erin Twp.,
 Macomb Co., Mich. and that the streets and alleys as shown on
 said plat are hereby dedicated to the use of the public.

Witness my hand and Seal this 14th day of February, 1917. (L.S.)
Louisa Shea (L.S.)

STATE OF MICHIGAN
 County of Macomb
 On this 14th day of February, A.D. 1917
 before me, a notary public in and for said county, personally
 came the above named LOUISA SHEA and
John W. Shea, known to me to be the persons who executed the above
 dedication and acknowledged the same to be their free act and
 deed.
 My commission expires Oct. 14th, A.D. 1917.

ENGINEERS CERTIFICATE
 I hereby certify that the plat hereon delineated is a correct one
 and that permanent monuments consisting of iron gaspipe 18"
long have been planted at all points marked thus (o) as thereon shown
 at all angles in the boundaries of the land platted and at all
 intersections of streets or streets and alleys.
W. P. Thomas
 Registered Civil Engineer

CERTIFICATE OF TOWNSHIP BOARD
 This plat was approved by the Township Board of the Township of
Erin at a Special meeting held on the 14th day of
March, 1917.
John W. Shea
 Township Clerk.

NOTARIES OFFICE
COUNTY OF MACOMB, MI.
 My commission expires Oct. 14th, A.D. 1917.
John W. Shea
Louisa Shea

The following clause to be incorporated in the plat
 that the above plat and subdivision is based on a
 to the following agreement: "The parties to this
 observed by these proprietors and the same shall be
 and easements and the same shall be subject to
 no time shall any lot in this subdivision be
 or any building thereon be sold, conveyed, or
 or conveyed to, nor shall the same be conveyed
 as a domestic servant, any Negro or any other
 of Negro blood."

THE PART HEREIN SET FORTH IS THE
John W. Shea
Louisa Shea
John W. Shea
Louisa Shea
 REGISTERED CIVIL ENGINEER

The land embraced in the annexed plat is the same SUBDIVISION
 No. 4 of part of the S 1/2 of the SE 1/4 of Sec. 17, T. 1 N., R.
 18 E. Erin Twp., Macomb Co., Mich. as described as follows:
 Commencing at the SE corner Sec. 17, T. 1 N., R. 18 E.
 Twp., Macomb Co., Mich. Thence N 0° 57' W. a distance of
 1137.8 feet. Thence S. 88° 20' W. a distance of 806 feet
 to the point of beginning. Thence S. 88° 20' W. a distance
 of 399.8 feet. Thence N. 0° 57' W. a distance of 153.5 feet.
 Thence N. 88° 20' E. a distance of 399.6 feet. Thence S. 0° 57'
 E. a distance of 153.5 feet to the point of beginning.

1925 W. J. LEHNER No. 123

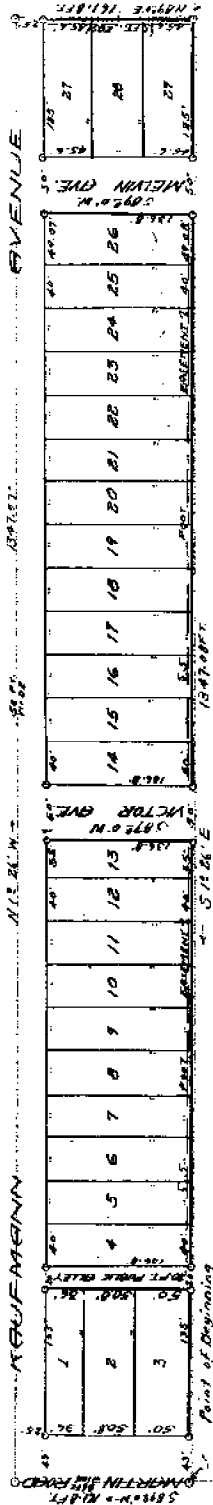
KALUFMANN SUBDIVISION
 PART OF THE SE 1/4 OF THE NW 1/4 OF SEC. 16 T14N R13E.
 ERIN TWP. MACOMB CO. MICHIGAN

W. J. LEHNER REG. CE.
 MOUNT CLEMENS MICH.

July 19-1925

SCALE
 1" = 100'

5916



KNOW ALL MEN BY THESE PRESENTS, That Henry Kaufmann and Elizabeth Kaufmann his wife, as proprietors, and the Hallway State Bank, a Michigan Corporation, by Edwin A. May, Cashier, and ~~Edmund J. K...~~ Vice President, as Mortgagors, have caused the land embraced in the annexed plat to be surveyed, laid out and platted, to be known as "KALUFMANN SUBDIVISION", part of the S. E. 1/4 of the N. W. 1/4 of Sec. 16, T. 14 N. R. 13 E., Erin Twp., Macomb County, Michigan, and that the streets and alleys as shown on said plat are hereby dedicated to the use of the public.

Signed and sealed in the presence of

[Handwritten signatures]

[Handwritten signatures]

Description of Land Platted

The land embraced in the annexed plat of "KALUFMANN SUBDIVISION", part of the S. E. 1/4 of the N. W. 1/4 of Sec. 16, T. 14 N. R. 13 E., Erin Twp., Macomb County, Michigan, is described as follows:

Beginning at a point on the E. and W. 1/4 line of Sec. 16, a distance of 485.49 ft., S. 89°00' W. of the center post, thence S. 89°00' W. 151.8 ft., thence N. 1°26' W. 1347.07 ft., thence N. 89°00' E. 161.8 ft.; thence S. 1°26' W. 1347.08 ft. to the point of beginning.

L. J. P. # C

L 9 P. 81

dedicated to the use of the public.
Signed and sealed in
the presence of
Edwin A. May
Edwin A. May
Edwin A. May

Edwin A. May
Edwin A. May
Edwin A. May

16, a distance of 485.49 ft., S. 89°00' W. of the center post,
thence S. 89°00' W. 161.5 ft., thence N. 1°26' W. 1347.07 ft.,
thence N. 89°00' W. 161.5 ft., thence S. 1°26' W. 1347.07 ft. to
the point of beginning.

16, a distance of 485.49 ft., S. 89°00' W. of the center post,
thence S. 89°00' W. 161.5 ft., thence N. 1°26' W. 1347.07 ft.,
thence N. 89°00' W. 161.5 ft., thence S. 1°26' W. 1347.07 ft. to
the point of beginning.

Notary Public in and for said County, personally came the above named Henry Kaufman and
Elizabeth Kaufman his wife, known to me to be the persons who executed
the above dedication, and acknowledged the same to be their free act and deed.

Notary Public, *Edwin A. May*, Co., Mich.

Commission Expires *1928*

Notary Public in and for said County, personally came the above named Henry Kaufman and
Elizabeth Kaufman his wife, known to me to be the persons who executed
the above dedication, and acknowledged the same to be their free act and deed.

Notary Public, *Edwin A. May*, Co., Mich.

Commission Expires *1928*

Notary Public in and for said County, personally came the above named Henry Kaufman and
Elizabeth Kaufman his wife, known to me to be the persons who executed
the above dedication, and acknowledged the same to be their free act and deed.

Notary Public, *Edwin A. May*, Co., Mich.

Commission Expires *1928*

Notary Public in and for said County, personally came the above named Henry Kaufman and
Elizabeth Kaufman his wife, known to me to be the persons who executed
the above dedication, and acknowledged the same to be their free act and deed.

Notary Public, *Edwin A. May*, Co., Mich.

Commission Expires *1928*

Notary Public in and for said County, personally came the above named Henry Kaufman and
Elizabeth Kaufman his wife, known to me to be the persons who executed
the above dedication, and acknowledged the same to be their free act and deed.

Notary Public, *Edwin A. May*, Co., Mich.

Commission Expires *1928*

Notary Public in and for said County, personally came the above named Henry Kaufman and
Elizabeth Kaufman his wife, known to me to be the persons who executed
the above dedication, and acknowledged the same to be their free act and deed.

Notary Public, *Edwin A. May*, Co., Mich.

Commission Expires *1928*

Notary Public in and for said County, personally came the above named Henry Kaufman and
Elizabeth Kaufman his wife, known to me to be the persons who executed
the above dedication, and acknowledged the same to be their free act and deed.

Notary Public, *Edwin A. May*, Co., Mich.

Commission Expires *1928*

Notary Public in and for said County, personally came the above named Henry Kaufman and
Elizabeth Kaufman his wife, known to me to be the persons who executed
the above dedication, and acknowledged the same to be their free act and deed.

Notary Public, *Edwin A. May*, Co., Mich.

Commission Expires *1928*

Notary Public in and for said County, personally came the above named Henry Kaufman and
Elizabeth Kaufman his wife, known to me to be the persons who executed
the above dedication, and acknowledged the same to be their free act and deed.

Notary Public, *Edwin A. May*, Co., Mich.

Commission Expires *1928*

Notary Public in and for said County, personally came the above named Henry Kaufman and
Elizabeth Kaufman his wife, known to me to be the persons who executed
the above dedication, and acknowledged the same to be their free act and deed.

Notary Public, *Edwin A. May*, Co., Mich.

Commission Expires *1928*

Notary Public in and for said County, personally came the above named Henry Kaufman and
Elizabeth Kaufman his wife, known to me to be the persons who executed
the above dedication, and acknowledged the same to be their free act and deed.

Notary Public, *Edwin A. May*, Co., Mich.

Commission Expires *1928*

Notary Public in and for said County, personally came the above named Henry Kaufman and
Elizabeth Kaufman his wife, known to me to be the persons who executed
the above dedication, and acknowledged the same to be their free act and deed.

Notary Public, *Edwin A. May*, Co., Mich.

Commission Expires *1928*

Notary Public in and for said County, personally came the above named Henry Kaufman and
Elizabeth Kaufman his wife, known to me to be the persons who executed
the above dedication, and acknowledged the same to be their free act and deed.

Notary Public, *Edwin A. May*, Co., Mich.

Commission Expires *1928*

Notary Public in and for said County, personally came the above named Henry Kaufman and
Elizabeth Kaufman his wife, known to me to be the persons who executed
the above dedication, and acknowledged the same to be their free act and deed.

This is to certify that the above plat was approved by
the Township Board of the Township of Spring Macomb County, Mich-
igan, at a meeting held this *1st* day of *July*, 1928.
Edwin A. May Township Clerk

I hereby certify that the plat herein delineated is a correct one
and that permanent monuments consisting of 1/2 x 18 inch iron
stakes have been planted at points marked "a" as thereon shown
at all angles in the boundaries of the land platted and at all
intersections of streets or thoroughfares and alleys.
Edwin A. May
Registered Civil Engineer.

Provided:
That the above plat and subdivision is hereby subjected
to the following agreement and covenant which shall be observed
by these proprietors herein described and their successors and
assigns and the heirs, executors and administrators and assigns
of them to wit:

That at no time within a period of 25 years shall any
lot in said subdivision or part thereof or any building thereon
be sold, rented, leased, transferred or conveyed to, nor shall
the same be occupied by, excepting as domestic servants, any
Negro or colored person or persons of Negro blood.

RECEIVED FOR RECORD
County of Macomb
Received for Record this *1st* day
of *July*, A.D. 1928, at
11:11 o'clock *AM* and Recorded
in Lib. *1* of *11*
By *Edwin A. May*
Edwin A. May Register

This plat was approved by the County Board by
Edwin A. May
Edwin A. May
Edwin A. May

COUNTY TREASURER
Edwin A. May
Edwin A. May
Edwin A. May

81

40	50 W.D.	40	50 W.D.
39	50 W.D.	39	50 W.D.
38	50 W.D.	38	50 W.D.
37	50 W.D.	37	50 W.D.
36	50 W.D.	36	50 W.D.
35	50 W.D.	35	50 W.D.
34	50 W.D.	34	50 W.D.
33	50 W.D.	33	50 W.D.
32	50 W.D.	32	50 W.D.
31	50 W.D.	31	50 W.D.
30	50 W.D.	30	50 W.D.
29	50 W.D.	29	50 W.D.
28	50 W.D.	28	50 W.D.
27	50 W.D.	27	50 W.D.
26	50 W.D.	26	50 W.D.
25	50 W.D.	25	50 W.D.
24	50 W.D.	24	50 W.D.
23	50 W.D.	23	50 W.D.
22	50 W.D.	22	50 W.D.
21	50 W.D.	21	50 W.D.
20	50 W.D.	20	50 W.D.
19	50 W.D.	19	50 W.D.
18	50 W.D.	18	50 W.D.
17	50 W.D.	17	50 W.D.
16	50 W.D.	16	50 W.D.
15	50 W.D.	15	50 W.D.
14	50 W.D.	14	50 W.D.
13	50 W.D.	13	50 W.D.
12	50 W.D.	12	50 W.D.
11	50 W.D.	11	50 W.D.
10	50 W.D.	10	50 W.D.
9	50 W.D.	9	50 W.D.
8	50 W.D.	8	50 W.D.
7	50 W.D.	7	50 W.D.
6	50 W.D.	6	50 W.D.
5	50 W.D.	5	50 W.D.
4	50 W.D.	4	50 W.D.
3	50 W.D.	3	50 W.D.
2	50 W.D.	2	50 W.D.
1	50 W.D.	1	50 W.D.
0	50 W.D.	0	50 W.D.

VICTOR AVE. 50 W.D.

AVENUE

MARTIN ROAD. 50 W.D.

AMBUS

OUTLOT A

OUTLOT B

OUTLOT C

OUTLOT D

OUTLOT E

OUTLOT F

OUTLOT G

OUTLOT H

OUTLOT I

OUTLOT J

STATE OF MICHIGAN 1926
County of Macomb

On this 19th day of May, 1926, before me, a Notary Public in and for said county, personally came the above named, George C. Hoffmann, President of Fraser State Bank, and Henry Bobb, Cashier of said corporation, and George C. Hoffmann, President of Fraser State Bank, and Henry Bobb, Cashier of said corporation, known to me to be the persons who executed the above delimitation, and acknowledged the same to be their free act and deed.

My commission expires August 21, 1927
Notary Public Macomb Co., Mich.

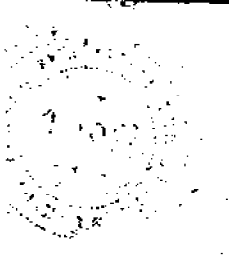
DESCRIPTION OF LAND PLATTED
The land embraced in the annexed plat of CHRISTENSEN AND SORHAM SUBDIVISION Part of the W. 1/4 of the N. 1/4 of Section 16, T. 18. N. R. 17. E. Erin Township, Macomb County, Michigan, is described as follows:
Beginning at a point which is 5.890 50' E. a distance of 1747.15 ft. from the N. 1/4 Post of Fractional Section 16 T. 18. N. R. 17. E. Erin Township, Macomb County, Michigan. Thence N. 89° 10' E. a distance of 356.05 ft. Thence N. 16° 17' E. a distance of 1245.70 ft. Thence S. 89° 10' W. a distance of 266.05 ft. Thence S. 16° 17' E. a distance of 1746.80 ft. to the point of beginning.

ENGINEER'S CERTIFICATE
I hereby certify that the plat hereon delineated is a correct one and that permanent metal monuments of not less than one inch in diameter and fifteen inches in length set in a concrete base at least four inches in diameter and forty-eight inches in depth have been placed at points marked thus (o) as thereon shown at all angles in the boundaries of the land platted, at all the intersections of streets, intersections of alleys, or of streets and alleys, and at the intersections of streets and alleys with the boundaries of the plat as shown on said plat.

CERTIFICATE OF MEMBERSHIP APPROVAL
This plat was approved by the Township Board of Erin Township at a meeting held Jan. 17th 1926

STATE OF MICHIGAN, 1926
County of Macomb

On this fourth day of May, 1926, before me, Edward C. Kaine, Notary Public in and for said county appeared George Steffens, President, and Henry Bobb, Cashier, of me personally known, who being each by me duly sworn did say that they are the President and Cashier respectively of the Fraser State Bank a Michigan corporation, and that the seal affixed to said instrument is the corporate seal of said corporation and that said instrument was designed and sealed in behalf of said corporation, and that its authority of its Board of Directors and the said George Steffens and Henry Bobb acknowledged the said instrument to be the free act and deed of said corporation.



George Steffens
Henry Bobb
President and Cashier
Fraser State Bank
Notary Public
May 4, 1926

1940
 W. J. CLEMENS No. 123
 1 E-66

'ASSESSOR'S PLAT OF SCHOLLENBERGER SUB' A REPLAT OF LOTS 30 TO 54 INC., OF CHRISTENSEN & SCHRAM SUB, AND PART OF S.E. 1/4 OF NW 1/4 OF SEC. 16 T.14N.13E., VILLAGE OF ROSEVILLE, MACOMB CO., MICH.

10506

WALTER J. LEHNER
 MT. CLEMENS, MICH.

Note: All dimensions in feet
 and decimals thereof.

SCALE 1" = 100'
 0 25 50 75 100

KNOW ALL MEN BY THESE PRESENTS, That I, Gustav L. Schaldach Assessor of the Village of Roseville of Macomb County, State of Michigan, by virtue of authority in me vested by Section 51, Act 172, of 1929, having been duly authorized by the Village Commission, have caused the land described in the annexed plat to be surveyed, laid out and platted to be known as "ASSESSOR'S PLAT OF SCHOLLENBERGER SUB.", a replat of Lots 30 to 54 inc., of Christensen and Schram Sub., and part of S.E. 1/4 of NW 1/4 of Sec. 16 T. 14 N. 13 E., Village of Roseville, Macomb Co., Mich., and that the streets as shown on said plat are now being used for such purposes.

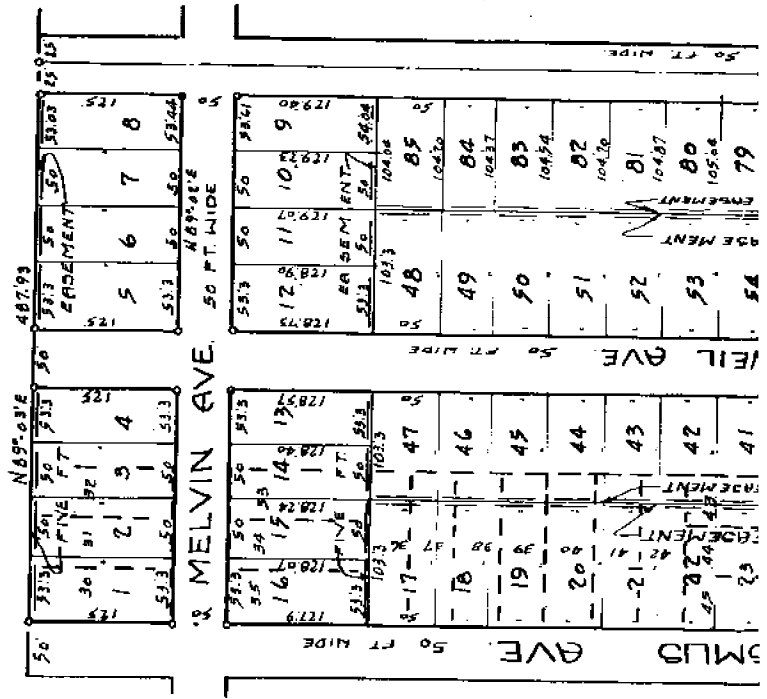
Witness:
 Gustav L. Schaldach
 Assessor of Roseville Village.

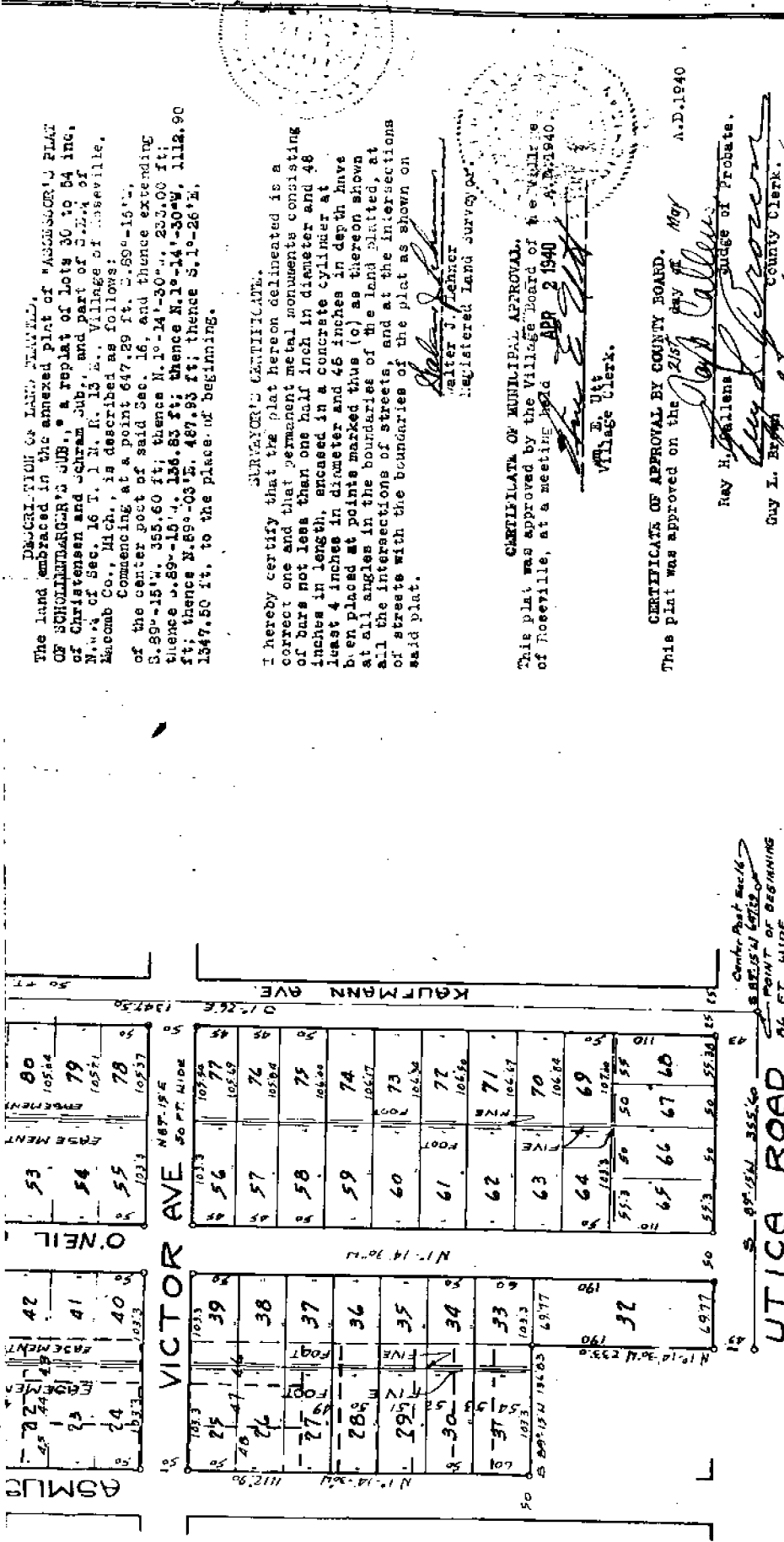
J. Russell LeBorg
 Norman C. Handel
 Notary Public in and for Macomb Co.

STATE OF MICHIGAN, }
 COUNTY OF MACOMB } SS.
 On this 2nd day of April
 A.D. 1940, before
 me, a Notary Public in and for said county, personally
 came the above named Gustav L. Schaldach assessor of Rose-
 ville, known to me to be the person who executed the
 above dedication, and acknowledged the same to be his
 free act and deed as such assessor.

Notary Public in and for Macomb Co.
 Norman C. Handel

DESCRIPTION OF LAND PLATTED.
 The land embraced in the annexed plat of "ASSESSOR'S PLAT
 OF SCHOLLENBERGER'S SUB.", a replat of Lots 30 to 54 inc.,
 of Christensen and Schram Sub., and part of S.E. 1/4 of





DESCRIPTION OF LAND PLANNED.
 The land embraced in the annexed plat of "ASSOCIATED PLAT OF SCHOLLENDORF'S SUB." a replat of lots 30 to 54 inc. of Christensen and Schram Sub. and part of S. 24 of N. 14 of Sec. 16 T. 1 N. R. 15 W. Village of Roseville, Macomb Co., Mich., is described as follows:
 Commencing at a point 647.29 ft. S. 89°-15'-15" of the center post of said Sec. 16, and thence extending S. 89°-15'-15" 355.60 ft; thence N. 10°-14'-30" 232.00 ft; thence S. 89°-15'-15" 136.83 ft; thence N. 10°-14'-30" 112.90 ft; thence S. 89°-03'-15" 487.93 ft; thence S. 10°-26'-15" 1347.50 ft, to the place of beginning.

SURVEYOR'S CERTIFICATE.
 I hereby certify that the plat hereon delineated is a correct one and that permanent metal monuments consisting of bars not less than one half inch in diameter and 48 inches in length, encased in a concrete cylinder at least 4 inches in diameter and 48 inches in depth have been placed at points marked thus (c) as thereon shown at all angles in the boundaries of the land platted, at all the intersections of streets, and at the intersections of streets with the boundaries of the plat as shown on said plat.

Walter J. Fehrer
 Walter J. Fehrer
 Registered Land Surveyor

CERTIFICATE OF MUNICIPAL APPROVAL.
 This plat was approved by the Village Board of the Village of Roseville, at a meeting held APR 2 1940 A.D. 1940.

Wm. E. Hall
 Wm. E. Hall
 Village Clerk.

CERTIFICATE OF APPROVAL BY COUNTY BOARD.
 This plat was approved on the 21st day of May A.D. 1940.

Ray H. Hallens
 Ray H. Hallens
 Judge of Probate.

Guy L. Brown
 Guy L. Brown
 County Clerk.

Carl J. Brandenburg
 Carl J. Brandenburg
 County Treasurer.

REGISTER'S OFFICE
 County of Macomb

Received for RECORD MAY 22 1940
 in the 23rd day of May 1940
Wm. E. Hall
 Village Clerk

CERTIFICATE OF APPROVAL BY BOARD OF COUNTY ROAD COMMISSIONERS

This plat has been examined and approved on the 13th day of May 1940 by the Board of County Road Commissioners of Macomb County.

Bert Moore
 Bert Moore
 Chairman

Louis Schoenher
 Louis Schoenher
 Vice-Chairman

Harry V. V. Lemley
 Harry V. V. Lemley
 Member

Examined and Approved

May 23 1940
Wm. E. Hall
 Wm. E. Hall
 Deputy Auditor General

See Certificate Commissioned of Feb 10 1937 Pg 503, Record
 No. 100 (Return) File 119 Reg 544

15-06

6.12
R.29

1937

P. K. MCBETHY (C.E.)

OP/6

6820

"ASSESSORS PLAT NO. 10"

PART OF THE 1/4 SEC. 17, T17N, R13E, VILLAGE OF ROSEVILLE MACOMB COUNTY MICHIGAN.

Scale - 1 Inch = 100 Feet

NOTE: All dimensions hereon are in feet and decimals thereof.

DESCRIPTION

THIS PLAT WAS BY THE BOARD OF SUPERVISORS, Part I, *Richard W. ...* Assessor of the Village of Roseville, Macomb County, State of Michigan, by virtue of authority conferred by section 51, Act 192, of 1929, having been duly authorized by the Village Council, Roseville, Michigan, and the land described in the annexed plat to be surveyed, this plat and related, to be known as *Assessors Plat No. 10*, part of lot 10, T17N, R13E, 1/4 Sec. 17, Village of Roseville, Macomb County, Michigan, and that the streets hereon be shown as indicated, to be new being used for such purposes,

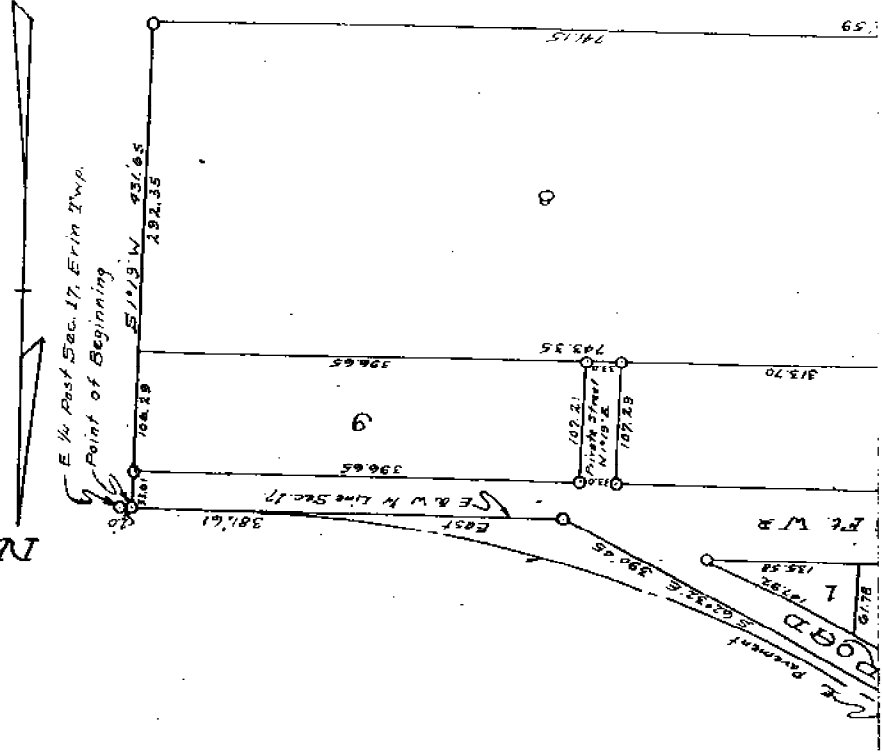
Witness my hand and seal this *16th* day of *July*, 1937.
Richard W. ...
 Assessor of the Village of Roseville.

6820

16th day of July, 1937

Witness my hand and seal this *11th* day of *July*, 1937.
James A. ...
 Assessor of the Village of Roseville.

July 11, 1937



... of the Village of Roseville, Macomb County, Michigan, and that the streets hereon be shown as indicated, to be new being used for such purposes, ...

L. 17

P. 21

1936

McBETTY (C.E.)

1E-061

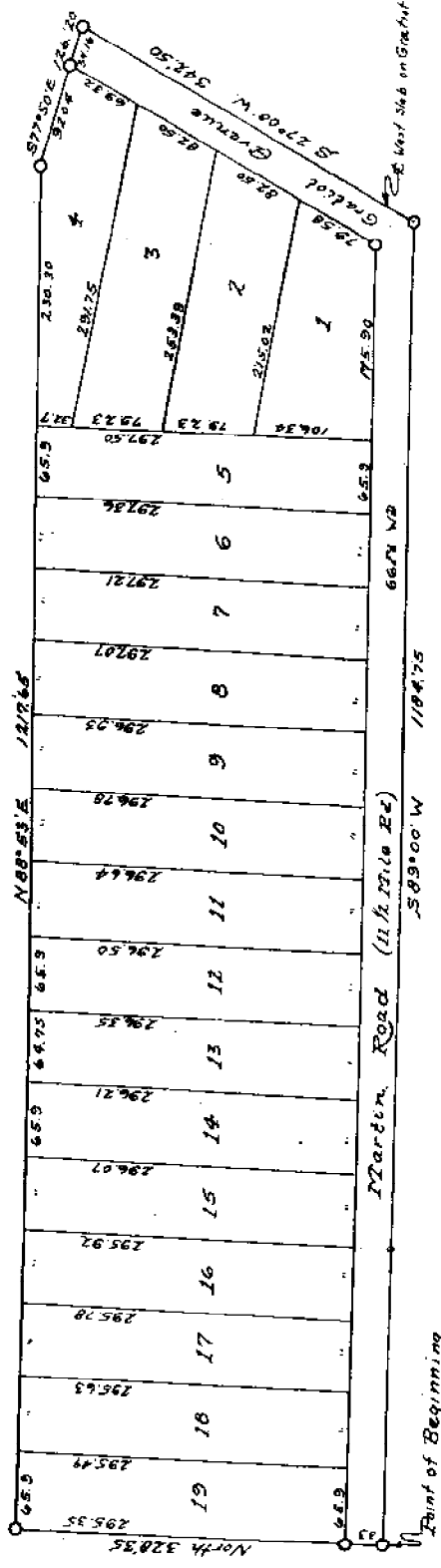
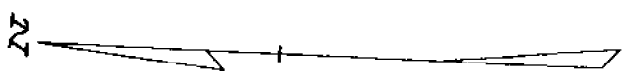
Original

"ASSESSORS PLAT No. 7,"
PART OF NE 1/4 SEC. 17 T14N, R13E,
VILLAGE OF ROSEVILLE, MACOMB COUNTY, MICHIGAN.

Scale - 1 Inch = 100 Ft.

8677

Signals thereof.



Point of Beginning
 Center Post Sec. 17, T14N, R13E

Center Post Sec. 17, 2nd Prop. T.M. RISE

NOTICE

Whereas the Village of Roseville, Macomb County, Michigan, State of Michigan, was created by Section 61, Act 178, Public Act 1906, and the Village Commission of Roseville, Michigan, has caused to be filed in the office of the Register of Deeds for Macomb County, Michigan, a plat of land known as "AMPHIBIOUS" and the boundaries of which are shown on said plat as follows: To wit: The boundaries of the plat as shown on said plat.

James E. Davis
Register of Deeds

James E. Davis
Assessor of the Village of Roseville

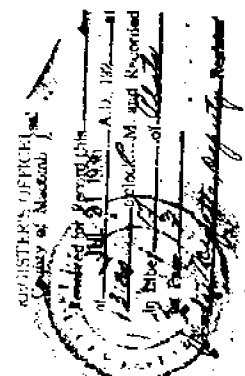
County of Macomb }
State of Michigan }

On this 11th day of June, 1936, before me, a Notary Public in and for the above named County of Macomb, Michigan, who recognize the above mentioned plat of land, and who are duly qualified to administer oaths, the said James E. Davis, Assessor of the Village of Roseville, Michigan, has sworn to the facts and contents of the above mentioned plat as such Assessor.

James E. Davis
Notary Public in and for Macomb County,
Michigan
Subscribed and sworn to before me this 11th day of June, 1936.

DESCRIPTION OF LAND PLAT ED

The land described in the above plat of "AMPHIBIOUS PLAT NO. 7", part of T. 3 S. 17 N. R. 15 E., T. 13 N. R. 15 E., Macomb County, Michigan is described as follows: beginning at the top corner of Sec. 17, T. 3 S. 17 N. R. 15 E. 89°53' E. 1217.55 ft. to S 79°50' E 126.20 ft. to S 27°00' W 342.80 ft. to S 69°00' W 1184.71 ft. to the point of beginning.



REGISTERED CERTIFICATE

I hereby certify that the plat hereon contained is a correct and true copy of the original plat on file in the office of the Register of Deeds for Macomb County, Michigan, and that the same is a correct and true copy of the original plat on file in the office of the Assessor of the Village of Roseville, Michigan, and that the same is a correct and true copy of the original plat on file in the office of the Assessor of the Village of Roseville, Michigan, and that the same is a correct and true copy of the original plat on file in the office of the Assessor of the Village of Roseville, Michigan.

James E. Davis
Registered Civil Engineer

CERTIFICATE OF COUNTY BOARD APPROVAL

This plat was approved by the Village Commission of the Village of Roseville at a meeting held on the 11th day of June, 1936.

James E. Davis
Village Clerk

CERTIFICATE OF APPROVAL BY COUNTY BOARD

This plat was approved on the 11th day of June, 1936.

James E. Davis
Judge of Probate
James E. Davis
County Clerk
Charles E. Rosenberg
County Treasurer

RECORDED AND APPROVED
JUN 11 1936
James E. Davis
Notary Public

Notary Public in and for said county, personally saw the above named George Edward Chubbard and known to me to be the persons who executed the above dedication, and acknowledged the same to be their free act and deed.

George Edward Chubbard
 Mayor, Roseville, Mich.

My Commission expires May 3, 1926

DESCRIPTION OF LAND PLATED

The land embraced in the annexed plat of 'BIERER'S SUBDIVISION' of part of the S2 1/2 of W2 1/2, Sec. 16, T11, R12E., Village of Roseville, Macomb Co., Mich., is described as follows:
 Beginning at a point on the E. & W. 1/2 line of Sec. 16, T11, R12E., Village of Roseville, Macomb Co., Mich., which is West a distance of 161.83 ft. from the centerpost of Sec. 16, T11, R12E., thence N. 00° 30' W. a distance of 1346.55 ft., thence E. 89° 43' W. a distance of 161.63 ft., thence S. 00° 30' E. a distance of 1397.36 ft., thence East a distance of 161.83 ft. to the point of beginning.

ENGINEER'S CERTIFICATE

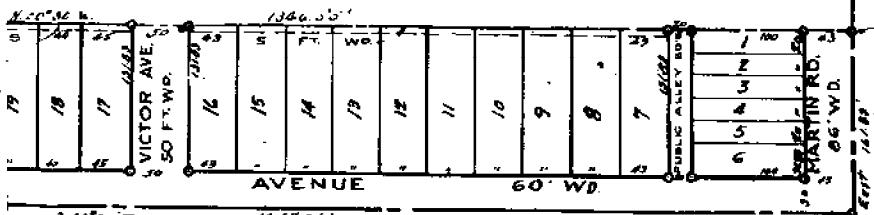
I hereby certify that the plat hereon delineated is a correct one and that permanent metal monuments of not less than one inch in diameter and fifteen inches in length set in concrete bases at least four inches in diameter and forty-eight inches in depth have been placed at points marked thus (o) as thereon shown at all angles in the boundaries of the land platted, at all the intersections of streets, intersections of alleys, or of streets and alleys, and at the intersections of streets and alleys with the boundaries of the plat as shown on said plat.

George E. Mearns
 Registered Civil Engineer

CERTIFICATE OF MUNICIPAL APPROVAL

This Plat was approved by the Village Commission of the Village of Roseville at a meeting held Monday Sept 27, 1926

Henry C. Mearns



REGISTER'S OFFICE) Co.
 County of Macomb
 Received for Record this 5th day
 of December, A.D. 1926 at
 9:00 o'clock A.M. and Recorded
 in Liber 18 of Platted
 on Page 17
August H. Whiting

This Plat was approved by the Council of the Village of Roseville on the 26th day of October, 1926
George E. Mearns
 Mayor
John W. ...
 Village Clerk
...
 Village Treasurer

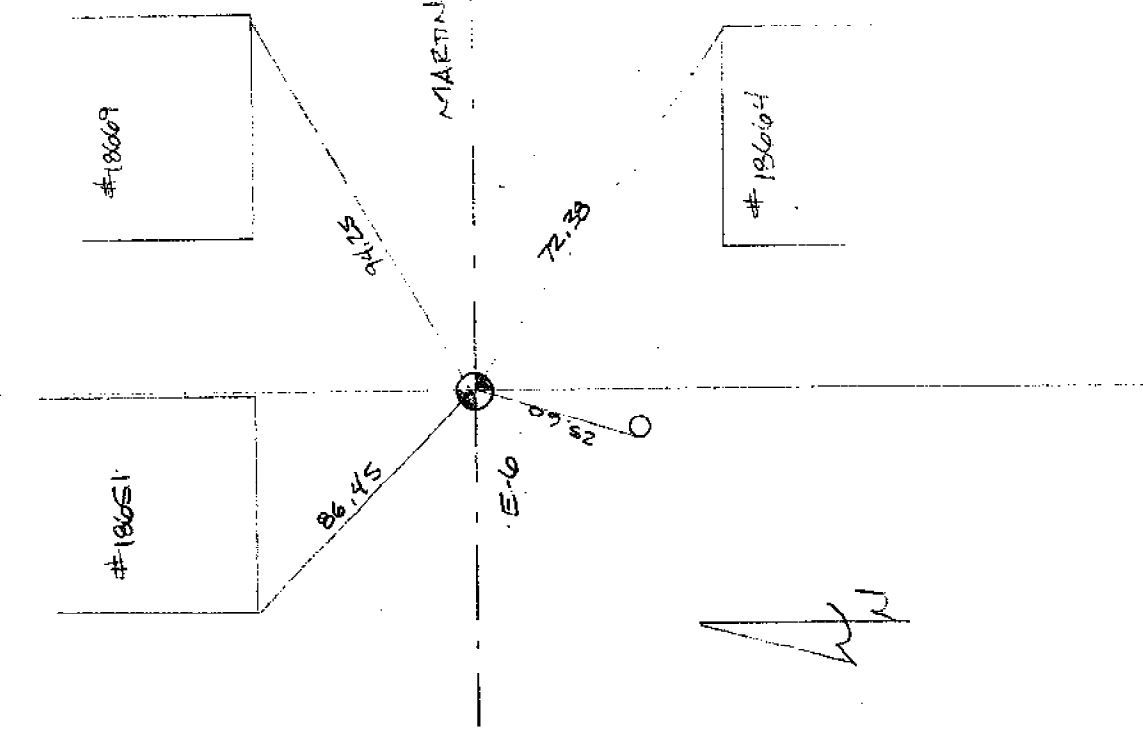
This is to certify that in the presence of the undersigned by the heirs or any individual in sales, and that if there are heirs described in the annexed instrument have been paid FIVE YEARS prior to the date of said, according to the records of this Office

John W. ...
 Village Clerk
...
 Village Treasurer

223-026 2005 MACOMBS RESNOI
 9/23/05 E-6
 10/1/05 T. IN, R. 13E. ERMA - EASTPONTE

No 2449
 19

AZ	DIST	DESC	SET	REMARKS
200°	25.60	BELL	SET	REMARKS IN W. FACE UP
150°	72.38		NE COR	BRICK HSE # 18664
40°	94.25		SE COR	BRICK GARAGE # 18669
335°	86.45		SW COR	BRICK HOUSE # 18651



110.02 Made 1/4 Section corner on a Hickory 229
8 in dia on tree line
10.04 To Section corner

South Between Sections 8+9

13.62 a Sugar tree 12 in dia

110.00 Set half mile post from which
a W. Oak 14 in dia bears West 10 links
dis also a Sugar tree 12 in dia bears
N 36 E 13 links dist

80.00 Set post for Sections 8, 9, 17, 16 from
which a W. Oak 11 in bears S 51 E 17 links
also a Sugar 18 in bears S 55 W 22 links
dis 1st half mile level and wet
3rd rate last half mile post dry 2nd rate
Timber B. Oak Beech Lyrus Elm etc
Undergrowth Alder etc

West On Roadway between S. 8, 17

40.00 Set temporary half mile post

80.00 Intersected wet boundary at the corner
Level level and dry 2nd rate

Timber W. Oak Beech Poplar Sugar
Lyrus + Undergrowth Spice Lyrus

East Corrected between 8+17

40.00 Made 1/4 Section corner on a Beech 6 in dia

80.00 To Section corner

South Between Sections 17+16

4.27 on Elm 16 in di

110.00 Set half mile post from which a
Beech 21 in di bears N 37 W 37 links also
a Beech 12 in dia bears N 30 E 13 links



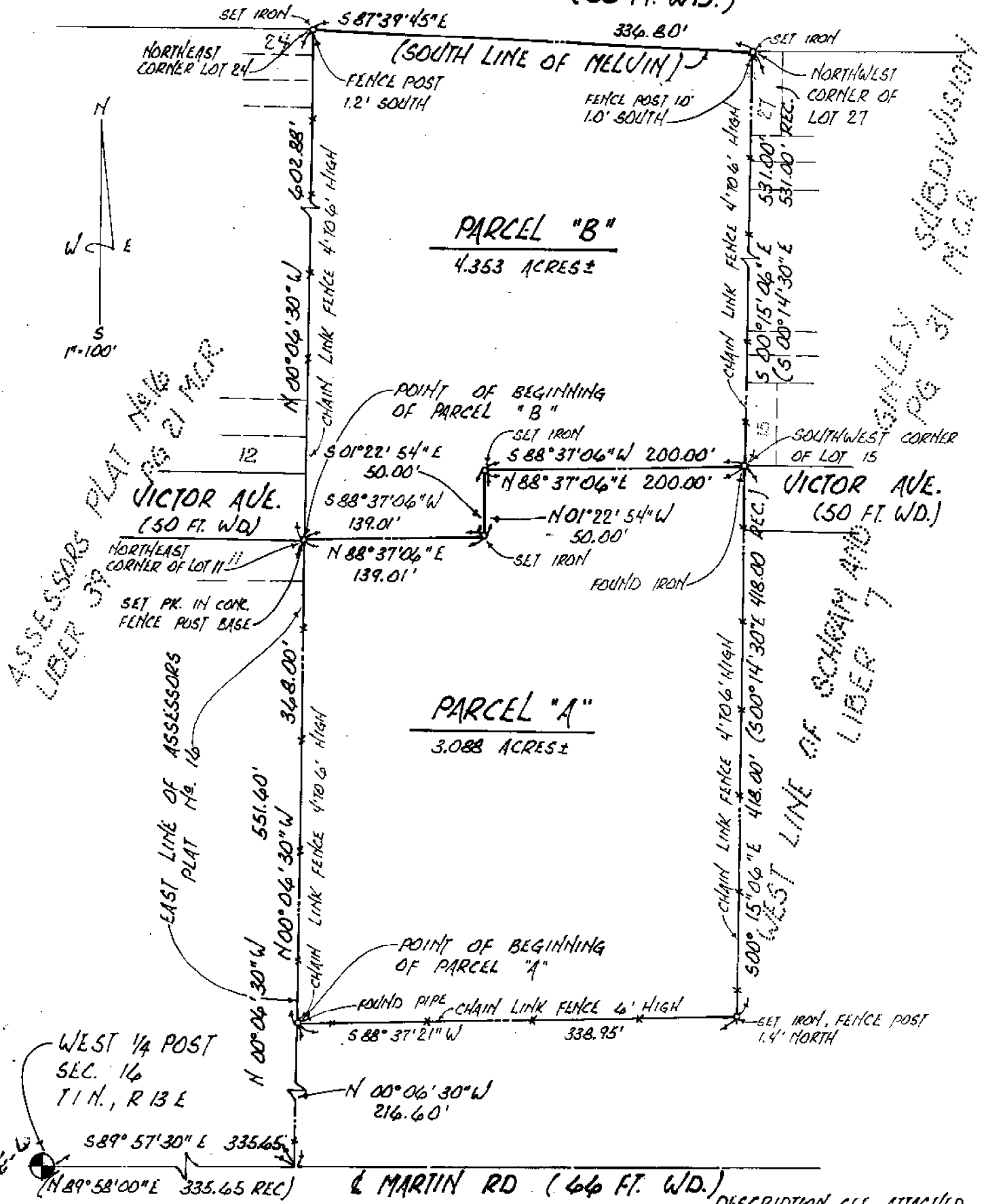
Certificate of Survey

ANDERSON, ECKSTEIN & WESTRICK, INC.
 42800 GARFIELD ROAD
 MT. CLEMENS, MICH. 48044

PHONE NUMBER
 (313) 286-1234

PART OF THE NORTHWEST QUARTER OF SECTION 14, TOWN 1 NORTH,
 RANGE 13 EAST, CITY OF ROSEVILLE, MACOMB COUNTY MICHIGAN.

MELVIN AVE. (50 FT. WD.)



ASSESSORS PLAT No. 16
 LIBER 379 Pgs 2 M.C.R.

SUBDIVISION
 M.C.R.
 12776
 PG 31
 LINE OF SCHMIDT AND
 LIBER 7

CERTIFY TO: ROSEVILLE COMMUNITY SCHOOLS
 ADDRESS: 18175 ELEVEN MILE ROAD
 CITY, STATE & ZIP: ROSEVILLE, MICHIGAN 48064
 TWP: CITY OF ROSEVILLE SEC: 9 COUNTY: MACOMB

I hereby certify that I have surveyed and mapped the land above and/or described on DEC 18, 1984 and that the ratio of closure on the unadjusted field observations of such survey was 1:500 and that all of the requirements of Public Act 132, of 1970 have been complied with.

DATE: _____ DRAWN BY: _____
 A.E.W. NO.: 24018 SHEET NO. 20F2
 SCALE: 1"=100' 0' 50' 100' 150'

Bearings shown on this survey were determined as follows.
ASSESSORS PLAT No 16

SHELBY W. MONEY L.L.S. # 30092

DESCRIPTION
PARCEL A

PART OF THE NORTHWEST QUARTER OF SECTION 16, TOWN 1 NORTH, RANGE 13 EAST, CITY OF ROSEVILLE, MACOMB COUNTY, MICHIGAN AND BEING MORE PARTICULARLY DESCRIBED AS:

BEGINNING ON THE EAST LINE OF ASSESSOR'S PLAT NO. 16, A PART OF THE NORTHWEST QUARTER OF SECTION 16, TOWN 1 NORTH, RANGE 13 EAST, VILLAGE OF ROSEVILLE, MACOMB COUNTY, MICHIGAN, AS RECORDED IN LIBER 39 OF PLATS, PAGE 21, MACOMB COUNTY RECORDS, WHICH IS SOUTH 89 DEGREES 57 MINUTES 30 SECONDS EAST 335.65 FEET (NORTH 89 DEGREES 58 MINUTES 00 SECONDS EAST 335.65 FEET RECORD) ALONG THE CENTERLINE OF MARTIN ROAD (66.00 FEET WIDE) AND NORTH 00 DEGREES 06 MINUTES 30 SECONDS WEST 216.60 FEET FROM THE WEST QUARTER POST OF SECTION 16; THENCE CONTINUING ALONG THE EAST LINE OF ASSESSOR'S PLAT NO. 16 NORTH 00 DEGREES 06 MINUTES 30 SECONDS WEST 368.00 FEET TO THE NORTHEAST CORNER OF LOT 11, WHICH IS ALSO THE SOUTHEAST CORNER OF VICTOR AVENUE (50.00 FEET WIDE); THENCE NORTH 88 DEGREES 37 MINUTES 06 SECONDS EAST 139.01 FEET; THENCE NORTH 01 DEGREES 22 MINUTES 54 SECONDS WEST 50.00 FEET; THENCE NORTH 88 DEGREES 37 MINUTES 06 SECONDS EAST 200.00 FEET TO THE WEST LINE OF SCHRAM AND GINLEY SUBDIVISION, A PART OF THE EAST HALF OF THE SOUTHWEST QUARTER OF THE NORTHWEST QUARTER OF SECTION 16, TOWN 1 NORTH, RANGE 13 EAST, ERIN TOWNSHIP, MACOMB COUNTY, MICHIGAN, AS RECORDED IN LIBER 7 OF PLATS, PAGE 31, MACOMB COUNTY RECORDS, ALSO BEING THE SOUTHWEST CORNER OF LOT 15 OF SCHRAM AND GINLEY SUBDIVISION AND THE NORTHWEST CORNER OF VICTOR AVENUE (50.00 FEET WIDE); THENCE SOUTH 00 DEGREES 15 MINUTES 06 SECONDS EAST 418.00 FEET (SOUTH 00 DEGREES 14 MINUTES 30 SECONDS EAST 418.00 FEET RECORD); THENCE SOUTH 88 DEGREES 37 MINUTES 21 SECONDS WEST 338.95 FEET TO THE POINT OF BEGINNING. CONTAINING 3.088 ACRES MORE OR LESS.

SUBJECT TO ANY AND ALL EASEMENTS AND RIGHTS OF WAY OF RECORD OR OTHERWISE.

ANDERSON, ECKSTEIN AND WESTRICK, INC.

SHELBY W. MONEY L.L.S. 30092
42800 GARFIELD ROAD
MOUNT CLEMENS, MICHIGAN 48044
(313) 286-1234

DATE

DESCRIPTION
PARCEL B

PART OF THE NORTHWEST QUARTER OF SECTION 16, TOWN 1 NORTH, RANGE 13 EAST, CITY OF ROSEVILLE, MACOMB COUNTY, MICHIGAN AND BEING MORE PARTICULARLY DESCRIBED AS:

BEGINNING AT THE NORTHEAST CORNER OF LOT 11, ALSO BEING THE SOUTHEAST CORNER OF VICTOR AVENUE (50.00 FEET WIDE), OF ASSESSOR'S PLAT NO. 16, A PART OF THE NORTHWEST CORNER OF SECTION 16, TOWN 1 NORTH, RANGE 13 EAST, VILLAGE OF ROSEVILLE, MACOMB COUNTY, MICHIGAN, AS RECORDED IN LIBER 39 OF PLATS, PAGE 21, MACOMB COUNTY RECORDS, WHICH IS SOUTH 89 DEGREES 57 MINUTES 30 SECONDS EAST 335.65 FEET (NORTH 89 DEGREES 58 MINUTES 00 SECONDS EAST 335.65 FEET RECORD) ALONG THE CENTERLINE OF MARTIN ROAD (66.00 FEET WIDE) AND NORTH 00 DEGREES 06 MINUTES 30 SECONDS WEST 551.60 FEET ALONG THE EAST LINE OF ASSESSOR'S PLAT NO. 16 FROM THE WEST QUARTER POST OF SECTION 16; THENCE CONTINUING ALONG THE EAST LINE OF ASSESSOR'S PLAT NO. 16 NORTH 00 DEGREES 06 MINUTES 30 SECONDS WEST 602.88 FEET TO THE NORTHEAST CORNER OF LOT 24 AND THE SOUTH LINE OF MELVIN AVENUE (50.00 FEET WIDE); THENCE SOUTH 87 DEGREES 39 MINUTES 45 SECONDS EAST 336.80 FEET ALONG THE SOUTH LINE OF MELVIN AVENUE TO THE NORTHWEST CORNER OF LOT 27 OF SCHRAM AND GINLEY SUBDIVISION, A PART OF THE EAST HALF OF THE SOUTHWEST QUARTER OF THE NORTHWEST OF SECTION 16, TOWN 1 NORTH, RANGE 13 EAST, ERIN TOWNSHIP, MACOMB COUNTY, MICHIGAN, AS RECORDED IN LIBER 7 OF PLATS, PAGE 31, MACOMB COUNTY RECORDS; THENCE SOUTH 00 DEGREES 15 MINUTES 06 SECONDS EAST 531.00 FEET (SOUTH 00 DEGREES 14 MINUTES 30 SECONDS EAST 531.00 FEET RECORD) ALONG THE WEST LINE OF SCHRAM AND GINLEY SUBDIVISION TO THE SOUTHWEST CORNER OF LOT 15, WHICH IS ALSO THE NORTHWEST CORNER OF VICTOR AVENUE (50.00 FEET WIDE); THENCE SOUTH 88 DEGREES 37 MINUTES 06 SECONDS WEST 200.00 FEET; THENCE SOUTH 01 DEGREES 22 MINUTES 54 SECONDS EAST 50.00 FEET; THENCE SOUTH 88 DEGREES 37 MINUTES 06 SECONDS WEST TO THE POINT OF BEGINNING. CONTAINING 4.353 ACRES MORE OR LESS.

SUBJECT TO ANY AND ALL EASEMENTS AND RIGHTS OF WAY OF RECORD OR OTHERWISE.

ANDERSON, ECKSTEIN AND WESTRICK, INC.

SHELBY W. MONEY, L.L.S. 30092
42800 GARFIELD ROAD
MOUNT CLEMENS, MICHIGAN 48044
(313) 286-1234

DATE

WITNESSES FOR THE WEST QUARTER POST SECTION 16:

P.K. SET IN CENTERLINE JOINT OF CONCRETE PAVEMENT FROM TIES OF ASSESSOR'S PLAT NO. 16 AS RECORDED IN LIBER 39 OF PLATS, PAGE 21, MACOMB COUNTY RECORDS.

1. NORTHEAST 29.82 FEET TO "X" CHISELED IN SOUTH EDGE OF DETROIT EDISON MANHOLE RIM.
2. SOUTHEAST 92.77 FEET TO P.K. SET IN NORTH FACE OF UTILITY POLE.
3. SOUTH BY SOUTHWEST 25.44 FEET TO P.K. SET IN WEST FACE OF UTILITY POLE.
4. NORTHWEST 59.50 FEET TO P.K. SET IN SOUTHWEST FACE OF 20" MAPLE.
5. NORTH 22.60 FEET TO BACK OF CURB.