

C152284

LAND CORNER RECORDATION CERTIFICATE
Filing Requirement of Act 74, Mich. P.A. 1970

corners in

MACOMB

(County)

Located In: ERIN/LAKE

Corner Code #

94 DEC 14 AM 10:55

MACOMB COUNTY, MI
REGISTER OF DEEDS

Public Land Survey

T 1N R 13E

E-1

Property Controlling in Section

S T R

Miscellaneous

S T R

Property in Sec.

S T R

LIBER 6527 PAGE 861

Register of Deeds Stamp & File Number

Lot No. Recorded Plat Private Claims

Grid table with columns A-M and rows 2-13. Contains numbers 6, 5, 4, 3, 2, 7, 8, 9, 10, 11, 12, 18, 17, 16, 15, 14, 13, 19, 20, 21, 22, 23, 24, 30, 29, 28, 27, 26, 25, 31, 32, 33, 34, 35, 36, 38.

STEVEN E. DUNN, in a field survey on MARCH 20, 19 94, hereby certify that under requirements of P.A. 74, Michigan P.A. of 1970, the corner points mentioned in lines 1 and 2 above were in conformance with regulations and rules therefore required in the current manual of survey instructions of the United States Department of Interior, Bureau of Land Management or by a decree of a Court of Law and for that the corner points mentioned in lines 3, 4 and 5 above were in conformance with the rules of the Michigan Board of Land Surveyors or by a Decree of a Court of Law; established, re-established, monumented, re-monumented, recovered, found as expressed below:

NOTE: Not more than 4 corners, all in the same town and range, may be recorded on this certificate.

Description of original monument and accessories and/or subsequent restoration:

GLO POST - NO EVIDENCE OF ORIGINAL CORNER FOUND

GLO ORIGINAL SURVEY

L.C.R.C. E-1, T.1N, R.13E.

L. 3551 P. 378 WILLIAM E. SODERBERG, #17635 FOUND 1/2" PIPE IN MONUMENT BOX OCTOBER 13, 1983

PLAT

L. 03 P. 161 HARMON FARMS JULY 26, 1919
L. 17 P. 030 SUPERVISOR'S PLAT NO. 2 JULY 21, 1936

Description of corner evidence found and/or method applied in restoring or reestablishing corner:

E-1 SECTION CORNER COMMON TO E-13 CLINTON TOWNSHIP

FOUND 1/2" IRON ROD IN MONUMENT BOX IN CONCRETE PAVEMENT VERIFIED LOCATION BY COMPARING FOUND WITNESSES OF L.C.R.C. LISTED BELOW AND DISTANCE FROM E-13 TO D-13 AS SHOWN ON SUPERVISOR'S PLAT NO. 2 LISTED ABOVE AND ON MDOT RAW MAP, MACOMB COUNTY, SHEET 79. ALSO COMPARED DISTANCE FROM E-13 TO F-13 AS SHOWN ON PLAT HARMON FARMS LISTED ABOVE.

FOUND WITNESS TIES

L. 3551 P. 378 S.45°E. 123.63' NORTHWEST CORNER BRICK APARTMENT BUILDING;
N.40°E. 140.76' SOUTHWEST CORNER BRICK BUILDING

FIELD MEASUREMENTS AND RECORDED DISTANCES

E-1 TO D-1 2703.12' (M.) 2640.00' G.L.O. (R.)
E-1 TO F-1 2699.14' (M.) 2640.00' G.L.O. (R.)

Description of monument for corner and accessories established to perpetuate locating the position of the corner:

E-1 T.1N., R.13E. I REPLACED 1/2" IRON ROD WITH A 3/4" x 24" IRON ROD WITH 2" DIAMETER ALUMINUM CAP STAMPED "MACOMB COUNTY MONUMENT MI. ACT 345 #28408 IN AN EXISTING MONUMENT BOX.

WITNESSES

S.48°W. 67.49' LIGHT POLE
N.43°W. 64.09' PK NAIL IN UTILITY POLE
N.44°E 140.74' SOUTHWEST CORNER OF BRICK BUILDING
S.41°E. 123.45' NORTHWEST CORNER OF BRICK APARTMENT BUILDING
S.33°E. 56.82' PK NAIL IN UTILITY POLE

ACCEPTED BY THE MACOMB COUNTY SURVEY PEER GROUP AS THE OFFICIAL CORNER UNDER MICHIGAN PUBLIC ACT 345 OF 1990 AT A MEETING HELD ON 10-4-94

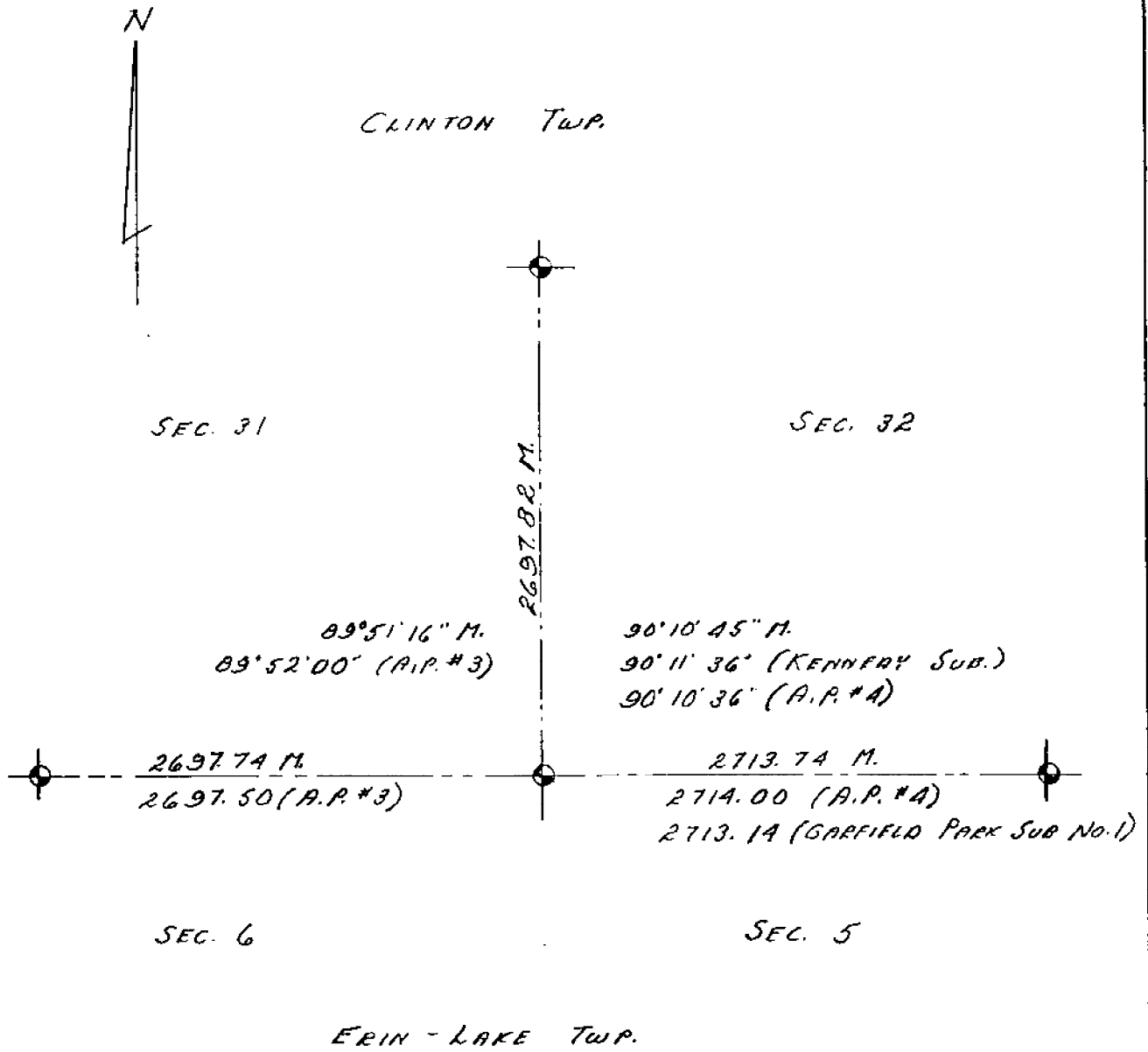
Signature of William E. Soderberg, P.S., Chairman

THE SELECTED LOCATION IS ACCEPTED BY ME AND IS GENERALLY ACCEPTED BY PROFESSIONAL SURVEYORS AS THE BEST AVAILABLE EVIDENCE OF THE POSITION OF THE ORIGINAL CORNER

Recorded by Steven E. Dunn Date Nov. 9, 1994

Surveyor's Michigan License No. 28408

22-141 50 SHEETS
22-142 100 SHEETS
22-144 200 SHEETS
ANIRAD



SEC. 31

SEC. 32

89°51'16" M.
89°52'00" (A.P.#3)

90°10'45" M.
90°11'36" (KENNEDY SUB.)
90°10'36" (A.P.#4)

2697.74 M.
2697.50 (A.P.#3)

2713.74 M.
2714.00 (A.P.#4)
2713.19 (GARFIELD PARK SUB NO.1)

SEC. 6

SEC. 5

ERIN - LAKE TWP.

LAND CORNER RECORDATION CERTIFICATE

FILING REQUIREMENT OF ACT 74, MICH. P.A.1970

FOR CORNERS OF --:	ERIN	LOCATED IN --:	SECT. 5	CORNER CODE NUMBER
1. PUBLIC LAND SURVEY	5	T. 1	N. 13 E.	E-1; E-2:
2. PROPERTY CONTROLLING IN SECTION		T. _____	N. _____ S. _____ R. _____ E. _____ W. _____	
3. MISCELLANEOUS PROPERTY IN SECTION		T. _____	N. _____ S. _____ R. _____ E. _____ W. _____	
4. LOT NO. _____	RECORDED PLAT _____			
5. PRIVATE CLAIMS _____				

A824550

RECORDED IN MACOMB COUNTY RECORDS AT: **9:22 A.M.**

OCT 13 1983

Edina H. Miller

CLERK - REGISTER OF DEEDS
MACOMB COUNTY, MICHIGAN
REGISTER OF DEEDS STAMP AND FILING NUMBER

I, William E. Soderberg do hereby certify that under requirements of P.A. 74, Michigan P.A. of 1970 the corner points mentioned in lines 1 and 2 above (identified with circles on index code diagram - over) were, in field survey on December 1 1980, established, re-established, monumented, re-monumented, recovered & restored as expressed below and in conformance with regulations and rules therefore as required in the current manual of survey instructions of the United States Department of the Interior, Bureau of Land Management or by a decree of court of law. Furthermore, that the corner points mentioned in lines 3, 4 and 5 above were, in a field survey on _____ 19____, found, recovered, restored, established or re-established as expressed below and in conformance with the rules of the Michigan State Board of Registration for Land Surveyors or, by a Decree of a Court of law:

A. Description of original monument and accessories and/or subsequent restoration:

B. Description of corner evidence found and/or method applied in restoring or re-establishing corner:

<p>E-1 C. Description of monument for corner and accessories established to perpetuate locating the position of the corner:</p> <p>NORTHEAST CORNER, FOUND 1 1/4" PIPE IN MONUMENT BOX (E-1)</p> <p>S. 45° E. 123.63 N.W. CORNER BRICK APARTMENT BUILDING</p> <p>N. 40° E. 140.76 S.W. CORNER BRICK BLDG.</p> <p>S. 37° W. 66.21 CENTERLINE TRAFFIC SIGNAL</p> <p>N. 45° W. 85.05 CENTERLINE STEEL ANCHOR POST</p>	<p>E-2 EAST QUARTER POST, FOUND 1" STEEL ROD IN MONUMENT BOX (E-2)</p> <p>S. 60° W. 161.55 N.E. CORNER 1 APARTMENT BLDG.</p> <p>S. 37° E. 147.73 N.W. CORNER 1 7-11 STORE</p> <p>N. 26° W. 47.98 SPIKE IN LIGHT POLE</p> <p>N. 13° E. 19.39 P.K. IN UTIL POLE</p>
--	---

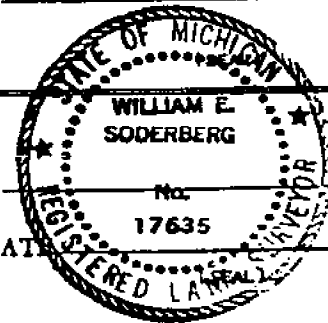
SIGNED BY William E. Soderberg DATE AUGUST 18, 1983

SURVEYOR'S MICHIGAN REGISTRATION NO. 17635

FOR STATE AND UNITED STATES AGENCIES:

SIGNED BY _____ DATE _____
CHIEF OF SURVEY PARTY

APPROVED AND SIGNED BY _____ DATE _____
MICHIGAN REGISTERED LAND SURVEYOR



SURVEYOR'S MICHIGAN REGISTRATION NO. _____

01116

3

NW-NE
Sec 5

T1N-R13E

SW-SE
Sec 32

T2N-R13E

SE-SE
Sec 32

SUPERVISORS' PLAT NO. 2

City of
FRASER

PIPERS' FACTORY SITES SUB

CLINTON BLDG.

SUPERVI

NOTE:
M-97 alignment is taken from CS 50031
S.O. # 7224 (1969) and S.O. # 5638 (1958).
All parcels were acquired by Macomb Co.
except as noted.

CS 50031

NW-NE
Sec. 5

NE-SE
Sec. 32

City of
FRASER

SUPERVISORS WOODED GARDENS

STATION EQUATION	
S18+718.150 # 7224	*
S15+447.210 # 5638	*
BEARING EQUATION	
N23°0'23"E S.O. # 7224	*
N32°28'50"E S.O. # 5638	*
N87°55'45"E S.O. # 7224	*
N91°27'30"E S.O. # 5638	*

CS 50031 S.O. # 7224 ENDS

CS 50031 S.O. # 5638 BEGINS

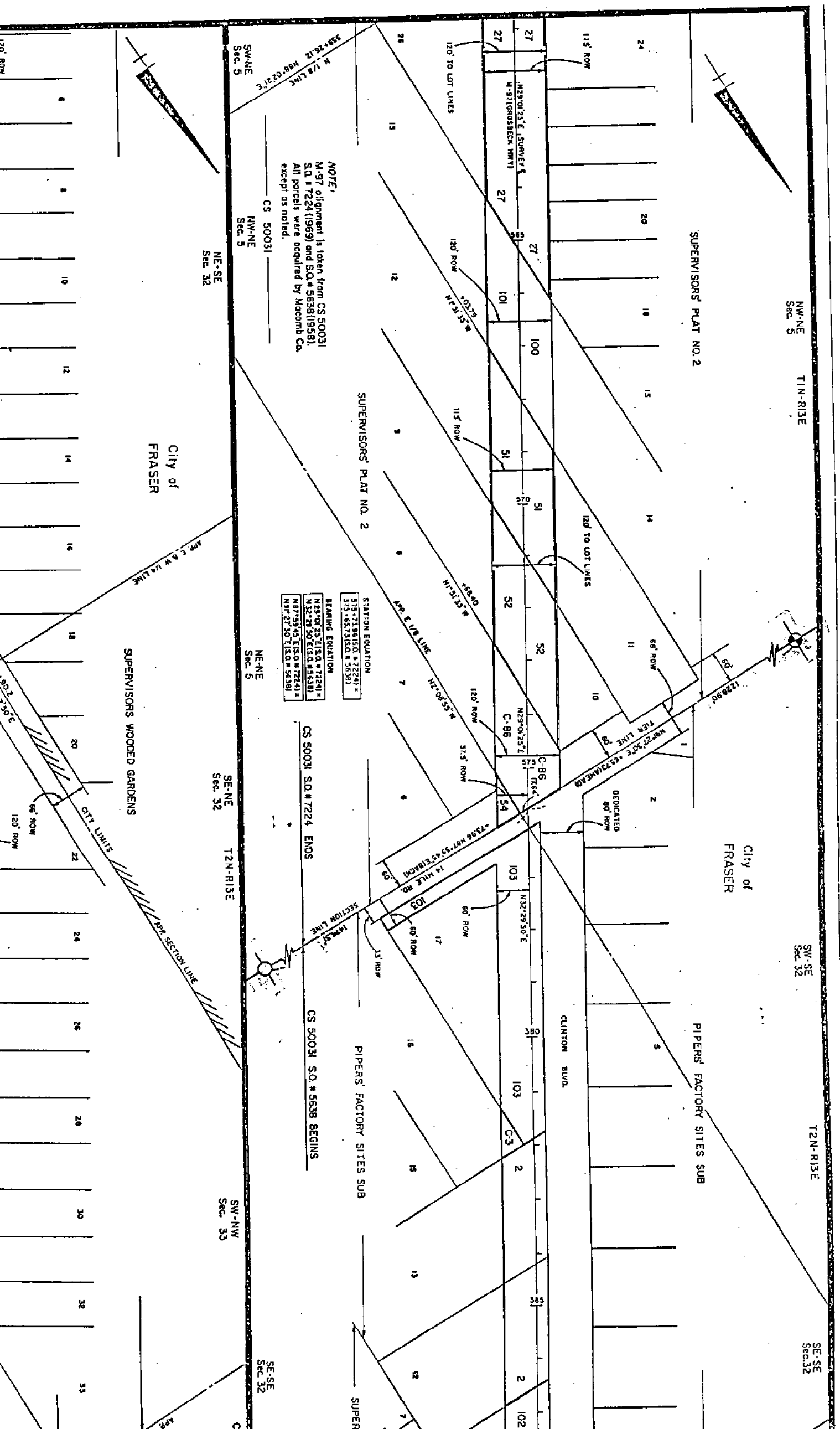
SE-NE
Sec. 32

T2N-R13E

SW-NW
Sec. 33

SE-SE
Sec. 32

CL



July 24-1919
 J. P. Harwood

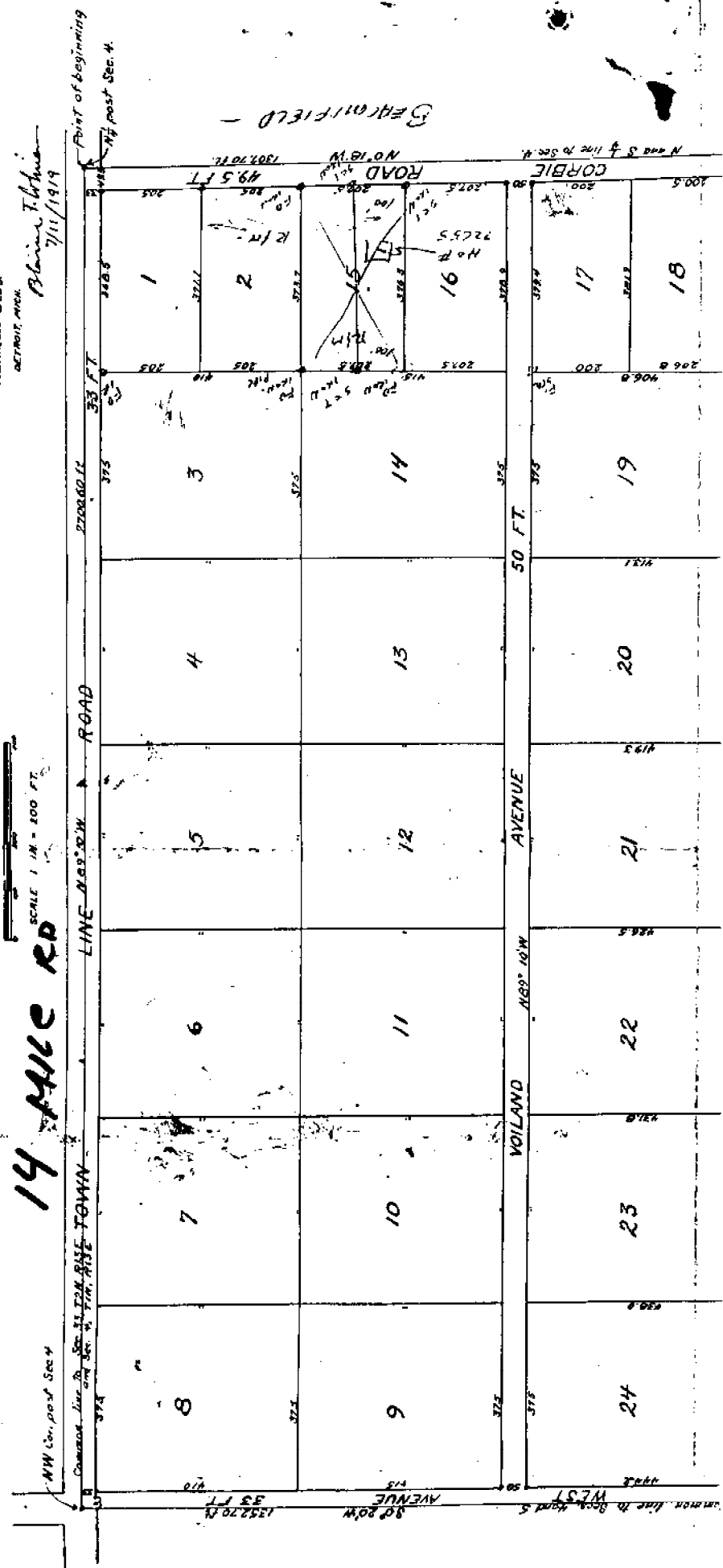
"HARMON FARMS"

A SUBDIVISION OF
 THE N 1/2 OF THE NW 1/4 OF SEC. 4, T19N, R13E,
 ERIN TOWNSHIP,
 MACOMB COUNTY,
 MICHIGAN

ALL DIMENSIONS ARE IN
 FEET AND DECIMALS THEREOF.

COLUMB AND HARDING
 CONSULTING AND ENGINEERING FIRM,
 202 ADELPHI BLDG.,
 DETROIT, MICH.

Blair T. Johnson
 7/11/1919



P. 161

BEARFIELD -

Point of beginning
 1/4 post Sec. 4.

NW 1/4 of Sec 4
 Common line to Sec 31, T19N, R13E, TOWN

14 MILE RD

LINE N. 89° 10' W.

ROAD

50 FT.

AVENUE

VOILAND

AVENUE

80 FT.

AVENUE

Common line to Sec. 4 and S 1/4 line to Sec. 4.

CORBIE ROAD

ROAD N. 81° 0' W. 1307.70 FT.

ROAD N. 81° 0' W. 1307.70 FT.

ROAD N. 81° 0' W. 1307.70 FT.

ROAD N. 81° 0' W. 1307.70 FT.

ROAD N. 81° 0' W. 1307.70 FT.

ROAD N. 81° 0' W. 1307.70 FT.

ROAD N. 81° 0' W. 1307.70 FT.

ROAD N. 81° 0' W. 1307.70 FT.

ROAD N. 81° 0' W. 1307.70 FT.

ROAD N. 81° 0' W. 1307.70 FT.

ROAD N. 81° 0' W. 1307.70 FT.

ROAD N. 81° 0' W. 1307.70 FT.

ROAD N. 81° 0' W. 1307.70 FT.

ROAD N. 81° 0' W. 1307.70 FT.

ROAD N. 81° 0' W. 1307.70 FT.

ROAD N. 81° 0' W. 1307.70 FT.

ROAD N. 81° 0' W. 1307.70 FT.

ROAD N. 81° 0' W. 1307.70 FT.

ROAD N. 81° 0' W. 1307.70 FT.

ROAD N. 81° 0' W. 1307.70 FT.

ROAD N. 81° 0' W. 1307.70 FT.

ROAD N. 81° 0' W. 1307.70 FT.

ROAD N. 81° 0' W. 1307.70 FT.

ROAD N. 81° 0' W. 1307.70 FT.

ROAD N. 81° 0' W. 1307.70 FT.

ROAD N. 81° 0' W. 1307.70 FT.

ROAD N. 81° 0' W. 1307.70 FT.

ROAD N. 81° 0' W. 1307.70 FT.

ROAD N. 81° 0' W. 1307.70 FT.

ROAD N. 81° 0' W. 1307.70 FT.

ROAD N. 81° 0' W. 1307.70 FT.

ROAD N. 81° 0' W. 1307.70 FT.

ROAD N. 81° 0' W. 1307.70 FT.

ROAD N. 81° 0' W. 1307.70 FT.

ROAD N. 81° 0' W. 1307.70 FT.

ROAD N. 81° 0' W. 1307.70 FT.

ROAD N. 81° 0' W. 1307.70 FT.

ROAD N. 81° 0' W. 1307.70 FT.

ROAD N. 81° 0' W. 1307.70 FT.

ROAD N. 81° 0' W. 1307.70 FT.

ROAD N. 81° 0' W. 1307.70 FT.

ROAD N. 81° 0' W. 1307.70 FT.

ROAD N. 81° 0' W. 1307.70 FT.

ROAD N. 81° 0' W. 1307.70 FT.

ROAD N. 81° 0' W. 1307.70 FT.

ROAD N. 81° 0' W. 1307.70 FT.

ROAD N. 81° 0' W. 1307.70 FT.

Town 1 North Range 13 East

Chm 12 S 83 N 6

Sa 12 S 41 E 6

No public lands East of this corner

North Boundary

East

6.58 B. Oak 24 in diam

19.00 Marsh

33.30 Lift Marsh

36.00 Marsh

41.00 Made 74 Sec. cor. on a willow in diam

40.50 Lift marsh

43.62 W.C. 24 in diam

10.00 Made cor. for sections 31, 32 on
a Kambach 3 in diamLand 1st half mile 1st rate last 1/2 mile2nd rate part dry Timber W.C. Oak

Chm Middle White Kambach etc.

East

40.00 made 74 Sec. cor. on a Hickory in diam

66.86 W.C. 36 inches diam

10.00 made cor. for sections 33, 34

on a Sycamore 40 inches diam

Land level and dry 2nd rate Timber

W. Oak Lyons Polder Birch Sugar etc

Wood 1st 1/2 Sec.

41.00 made 1/2 mile cor. on an Elm in diam

49.00 Lyons 14 in diam

10.00 Sit part for sections 34, 33, 34

East from part which a Birch 2 in diam

bears N 15 S 11 the dist also a Birch

diam bears N 11 E 16 the dist - lumber

2nd rate level and dry Timber W.C. Oak

Town 1 North Range 13 East

Sugar Poplar Lynx & Hughtth Spruce

- 14.13 Birch 16 in diam
 20.00 Run 1/2 the course S.E.
 110.00 Made 1/2 mile cor on a Birch 10 in diam
 10.00 Set post for cor of Sections 2, 3, 34 & 35
 from which a Birch 11 in diam bears
 N 53 E 17 lbs dist also an Elm 24 in
 East bears N 5 W 31 lbs distant
 Land first 1/2 mile good 2nd rate
 last half 3rd rate Timber Birch Sugar
 Oak Poplar B. Ash & Hughtth Spruce

- 20.15 Oak 18 in diam
 30.66 Intersected Private Claim N. 123 1/2 miles
 Set post for cor of Sections 2 & 35
 from which a B. Ash 10 in diam
 bears N 77 E 4 lbs dist also a
 Lynx 7 in diam bears N 52 E 2 lbs
 dist Land dry good 2nd rate Timber
 Birch B. Ash Poplar &c

West Boundary

North of the first Meridian of the Territory
 of Michigan

- 12.34 Poplar 36 inches diameter
 110.00 Set post for cor of 74 Section from
 which a Sugar tree 13 inches diam
 bears South 9 lbs distant
 118.62 Sycamore 36 in diam
 20.00 Set mile post for cor of sections
25 & 36 from which an Elm 10 in
 diam bears S 77 E 10 lbs distant
 also a Lynx 10 in diam bears N 35
 W 20 lbs dist Land first half