

Part B: Surveyor's Report on Perpetuation, Restoration, Reestablishment or Monumentation of Corner:

Refer to: 11-22-2006 LCRC for Remonumentation Corner by Robert H. Birkett, PS #41094, D02 recorded in L. 18324 of Deeds on P. 598. Replaced found boat spike with a 3/4" X 24" iron with an aluminum cap stamped "MACOMB COUNTY MONUMENT, MI ACT 345, 41094, D02" in a new monument box in centerline of Masonic Avenue (east-west) with 4 accessories.

Part C: Field Evidence of Perpetuation or Monumentation of Corner:

3-16-2017 Found a 3/4" X 24" iron with an aluminum cap stamped "MACOMB COUNTY MONUMENT, MI ACT 345, 41094, D02" in a monument box in centerline of Masonic Avenue (east-west) with 4 of 4 matching accessories from the LCRC listed in Part A.
Occupied corner with GPS to obtain Geodetic Coordinate Data.

Accessories:

AZ. 5° 36.42' (R&M) Found Macomb County Witness Tag above found MSHD tag east face of utility pole
 AZ. 162° 57.62' (R&M) Northwest corner of garage, #31857 Eveningside
 AZ. 192° 42.85' (R&M) Northeast corner 6' precast concrete wall
 AZ. 319° 176.88' (R&M) Southwest corner "Miles Restaurant" building

Date of Observation	Latitude	Longitude	Datum and Adjustment Year	Epoch Date
16-Mar-17	N 42D31'54.16221"	W 82D56'21.44963"	NAD83 (2011)	2010.0000

Method for Latitude-Longitude determination: NGS OPUS-RS Solution

State Plane Coordinates in international feet: N-379244.85', E-13508055.11'
 Standard Deviation: 0.04'N, 0.03'W
 Zone: South
 Combined Factor: 0.99990184
 NGSPID: DI6134
 Survey Method: MC GPS
 Orthometric Height: 614.46'
 Elev. Datum: NAVD88

I, Steven E. Dunn, P.S., in a field survey on March 16, 2017, certify under the requirements of the State Survey and Remonumentation Act, 1990 PA 345, MCL 54.261 to 54.279, and the Corner Recordation Act, 1970 PA 74, MCL 54.201 to 54.210d, that the corner identified and described hereon has been perpetuated or monumented as described in Parts A, B, and C above, pursuant to the laws and rules of the State of Michigan.

Steven E. Dunn May 15, 2017
 Steven E. Dunn, P.S. Date

Professional Surveyor's License No.: 28408

Prepared By:
 Steven E. Dunn, PS
 Great Lakes Geomatics, LLC
 12504 Stephens
 Warren, MI 48089



I, Martin C. Dunn, P.S., Macomb County Surveyor Representative, have reviewed the corner perpetuated in parts A, B and C above for the purpose of publishing its Michigan State Plane Coordinate values and relative data and is accepted for filing in the Macomb County Remonumentation Program.

Martin C. Dunn 6-8-2017
 Martin C. Dunn, P.S. Date

Macomb County Surveyor Representative
 License No. 30081

REC'D MAR 15 2007
12:30 PM

CORRECTIVE LAND CORNER RECORDATION CERTIFICATE
Filing Requirement of Act 74, Mich. P.A. 1970

For corners in

Macomb (County)	Located In: City of Fraser	Corner Code #
1. Public Land Survey	T 1N R 13E	D-2
	T R	
	T R	
	T R	
2. Property Controlling in Section	S T R	
	S T R	
3. Miscellaneous Property in Sec.	S T R	
	S T R	
4. Lot No. _____, Recorded Plat		
5. Private Claims		

7043844
LIBER 18585 PAGE 706



03/20/2007 10:53:17 A.M.
MACOMB COUNTY, MI SEAL
CARMELLA SABAUGH, REGISTER OF DEEDS

I, Robert H. Birkett, in a field survey on, August 10, 2006 do hereby state that under requirements of P.A. 74, Michigan P.A. of 1970, the corner points mentioned in lines 1 and 2 above were in conformance with regulations and rules therefore as required in the current manual of survey instructions of the United States Department of the Interior, Bureau of Land Management or by a decree of a Court of Law and for that the corner points mentioned in lines 3, 4 and 5 above were in conformance with the rules of the Michigan Board of Land Surveyors or by a Decree of a Court of Law; established, re-established, monumented, re-monumented, recovered, found as expressed below:

NOTE: Not more than 2 corners, all in the same town and range, may be recorded on this certificate.

	A	B	C	D	E	F	G	H	I	J	K	L	M
2	6			5				4		3		2	1
3													
4	7		8					9		10		11	12
5													
6	18		17					16		15		14	13
7													
8	19		20					21		22		23	24
9													
10	30		29					28		27		26	25
11													
12	31		32					33		34		35	36
13													

A. Description of original monument and accessories and/or subsequent restoration:

- D-2 1818, Center of section 5 was not set by the General Land Office
- a-1926, HR O'Mara, "Garfield Park Sub", L 011 P 025 M.C.R.
- b-1926, L Luke No 1457, "Garfield Park Sub No 1", L 012 P 016 M.C.R.
- c-1930, DE Teed (CE), "Assessor's Plat No 5", L 014 P 029 M.C.R.
- d-1930, DE Teed (CE), "Assessor's Plat No 6", L 014 P 030 M.C.R.
- e-1930, DE Teed (CE), "Assessor's Plat No 7", L 014 P 031 M.C.R.
- f-1936, PK McCarthy (CE), "Supervisors Plat No 2", L 017 P 030 M.C.R.
- g-1941, WJ Lehner No 123, "Assessor's Plat of Heath Fraserville Little Farms Sub", L 021 P 029 M.C.R.
- h-1956, B. Warner No 42, "Venetian Village Subdivision", L 037 P 001
- i-1957, B. Warner No. 42, " Venetian Village Woods" L 040 P 019
- j-1960, B. Warner No 42, "Venetian Village Woods No. 2" L 046 P050
- k-1983, W.E. Soderberg No. 17635, Boat Spike, LCRC L. 3551, P. 380
- l-1995, Fenn & Associates, Boat Spike, Mortgage Report
- m-2003, Metco Services, Not Described, Unrecorded Survey



*Correcting a previously recorded document, Liber 18324, Page 598 Macomb County Records
Correcting the following:
- City of Roseville to City of Fraser

B. Description of corner evidence found and/or method applied in restoring or re-establishing corner:

D-2
Existing evidence consists of a found boat spike in paved Masonic Ave. east and west. No occupation north and south. Corner location was verified from calculated position supported by monumentation in (h), (i), and (j) from section A, and the measured distance between adjacent government corners C-2, E-2, D-3, and witnesses from LCRC (k).

Field Measurements Between Corners

- To D-1 Remon 2006 = 2699.40, Record East = 2700.88, Record West = 2706.14
- To C-2 Remon 2006 = 2731.03, Record North = 2730.85 L.014 P.012, Record South = 2730.85 L.014 P.030, Dunn (2002) = 2730.85'
- To E-2 Remon 2006 = 2688.31, Record North = 2689.21, Record South = 2688.81
- To D-3 Remon 2006 = 2731.50, Record East = 2731.16, Record West = 2736.72

C. Description of monument for corner and accessories established to perpetuate locating the position of the corner:

D-2 Set a 3 / 4" x 24" iron with an aluminum cap stamped "Macomb County Monument, MI, ACT 345, 41094, D-2" to replace the boat spike, in paved centerline Masonic Ave. east and west, in a new monument box.

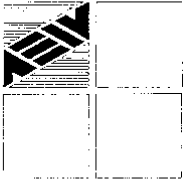
- AZ 5° - 36.42' - Set Macomb County Witness tag above found MSHD tag east face utility pole.
- AZ 162° - 57.62' - Northwest corner of garage, #31857 Eveningside.
- AZ 192° - 42.85' - Northeast corner 6' precast concrete wall.
- AZ 319° - 176.88' - Southwest corner "Miles Restaurant" building.

The selected location is accepted by me and is generally accepted by Professional Surveyors as the best available evidence of the position of the original corner.

ACCEPTED BY THE MACOMB COUNTY SURVEY PEER
GROUP AS THE OFFICIAL CORNER UNDER MICHIGAN
PUBLIC ACT 345 OF 1990 AT A MEETING HELD
ON 10-10-06
Martin C. Dunn
MARTIN C. DUNN, P.S. CHAIRMAN

Signed by *R.H. Birkett*
Surveyor's Michigan License No. 41094

Date 3-14-07



ANDERSON, ECKSTEIN AND WESTRICK, INC.

51301 Schoenherr Road, Shelby Township, Michigan 48315

Civil Engineers • Surveyors • Architects (586) 726-1234

Report of Survey D-2, Fraser Town 1 North, Range 13 East Macomb County, Michigan

Corner Information

D-2 was not set by the General Land Office, during the original survey in 1818
This corner is the center of section 5

Existing Conditions

Existing evidence consists of a found boat spike in paved Masonic Ave. east and west.

Plats

a-1926, HR O'Mara, "Garfield Park Sub", L 011 P 025 M.C.R.
b-1926, L Luke No 1457, "Garfield Park Sub No 1", L 012 P 016 M.C.R.
c-1930, DE Teed (CE), "Assessor's Plat No 5", L 014 P 029 M.C.R.
d-1930, DE Teed (CE), "Assessor's Plat No 6", L 014 P 030 M.C.R.
e-1930, DE Teed (CE), "Assessor's Plat No 7", L 014 P 031 M.C.R.
f-1936, PK McCarthy (CE), "Supervisors Plat No 2", L 017 P 030 M.C.R.
g-1941, WJ Lehner No 123, "Assessor's Plat of Heath Frasierville Little Farms Sub", L 021 P 029 M.C.R.
h-1956, B. Warner No 42, "Venetian Village Subdivision", L 037 P 001
i-1957, B. Warner No. 42, " Venetian Village Woods" L 040 P 019
j-1960, B. Warner No 42, "Venetian Village Woods No. 2" L 046 P050

Condominiums

None

Land Corner Recordation Certificate

None

Recorded Surveys

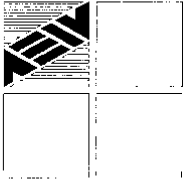
1983, W.E. Soderberg No. 17635, Boat Spike, Survey L. 3551, P. 380
*S 06° W - 42.93' Northeast corner 6.0' precast concrete wall
*S 25° E - 57.64' Northwest corner of garage
North - 113.78' Southwest corner 6.0' precast concrete wall
*N 49° W - 177.41' Southwest corner building

Unrecorded Surveys

1995, Fenn & Associates, Boat Spike, Mortgage Report
2003, Metco Services, Not Described, Unrecorded Survey

Miscellaneous

None



ANDERSON, ECKSTEIN AND WESTRICK, INC.

51301 Schoenherr Road, Shelby Township, Michigan 48315

Civil Engineers • Surveyors • Architects (586) 726-1234

Observations from D-2

To D-1 Remon 2006 = 2699.40, Record East = 2700.88, Record West = 2706.14
To C-2 Remon 2006 = 2731.03, Record North = 2730.85, L. 014 P. 012, Record South = 2730.85 L. 014
P. 030, Dunn (2003) = 2730.85
To E-2 Remon 2006 = 2688.31, Record North = 2689.21, Record South = 2688.81
To D-3 Remon 2006 = 2731.50, Record East = 2731.16, Record West = 2736.72

Remon NE 89° 42' 37" No subdivision adjacent to section line
Remon SE 89° 33' 01" L. 037 P. 001 89° 29' 00"
Remon SW 90° 25' 32" L. 014 P. 030 90° 25' 59"
Remon NW 89° 44' 04" L. 014 P. 012 89° 44' 38"

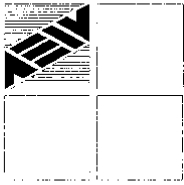
The theoretical location of corner D-6 is 0.57' south of the set corner 3.79' east of the set corner

Recommendation

A boat spike was found in the asphalt. Based on found monumentation from plats (h), (i), and (j) and the measured distance to adjacent government corners C-2, E-2, D-3, and witnesses from LCRC, the location of the found boat spike was verified. I therefore recommend to the Macomb County Peer Group that they accept the found boat spike as the best evidence of the corner position as being perpetuated.

Robert H. Birkett 11-02-06

Robert H. Birkett, PS 41904
Anderson, Eckstein & Westrick, Inc.



ANDERSON, ECKSTEIN AND WESTRICK, INC.

51301 Schoenherr Road, Shelby Township, Michigan 48315
Civil Engineers • Surveyors • Architects (586) 726-1234

D-2
City of Fraser
Macomb County 2006 Remonumentation

Section One

- A. Index
- B. Before and after pictures of the monument.

Section Two

- A. LCRC
- B. Surveyor's report.

Section Three

- 1. Field notes.
- 2. Field notes.
- 3. Sketch of area and found monumentation.
- 4. Composite maps, 14-05A, 14-05B, 14-05C, 14-05D,
14-05E, 14-05F, 14-05G, 14-05H

Section Four

A. Recorded plats.

- a-1926, HR O'Mara, "Garfield Park Sub", L 011 P 025 M.C.R.
- b-1926, L Luke No 1457, "Garfield Park Sub No 1", L 012 P 016 M.C.R.
- c-1930, DE Teed (CE), "Assessor's Plat No 5", L 014 P 029 M.C.R.
- d-1930, DE Teed (CE), "Assessor's Plat No 6", L 014 P 030 M.C.R.
- e-1930, DE Teed (CE), "Assessor's Plat No 7", L 014 P 031 M.C.R.
- f-1936, PK McCarthy (CE), "Supervisors Plat No 2", L 017 P 030 M.C.R.
- g-1941, WJ Lehner No 123, "Assessor's Plat of Heath Fraserville Little Farms Sub", L 021 P 029 M.C.R.
- h-1956, B. Warner No 42, "Venetian Village Subdivision", L 037 P 001
- i-1957, B. Warner No. 42, " Venetian Village Woods" L 040 P 019
- j-1960, B. Warner No 42, "Venetian Village Woods No. 2" L 046 P050

B. Recorded and unrecorded surveys.

- 1. 1983, W.E. Soderberg No. 17635, Boat Spike, Survey L. 3551, P. 380
- 2. 1995, Fenn & Associates, Boat Spike, Mortgage Report
- 3. 2003, Metco Services, Not Described, Unrecorded Survey

C. Field notes from other sources.

None

2006

**MACOMB COUNTY REMONUMENTATION
PROGRAM FOR CITY OF FRASER**

Research Dossier for D-02

Prepared by:
Anderson, Eckstein & Westrick, Inc.
51301 Schoenherr Road
Shelby Twp., Michigan 48315

**Sources of Information Researched
For Macomb County 2006 Remonumentation Program
For City of Roseville**

- 1) GLO Notes
- 2) Act 74 Recorded LCRC
- 3) Act 132 Recorded Surveys
- 4) Personal History and Records
- 5) Unrecorded LCRC's and Surveys
- 6) Letters to the Following, Requesting Unrecorded information

Midwestern Consulting LLC
Atwell Hicks Inc
ANR Pipeline Company
BMJ Engineers & Surveyors
Air Land Surveys, Inc.
Lehner Associates, Inc.
Kem-Tec Land Surveyors
Boss Engineering Company, Inc.
Engineering & Surveying Consultant
Charles E. Raines Co.
Johnson & Anderson, Inc.
Earl Gravlin Surveyor
Del-Tec Surveying & Engineering
David J. Little Land Surveyors
David C. Adams & Son
Coulter & Associates
Fenn & Associates Surveying, Inc.
Donald H. DeKeyser, Surveyor
Huron Clinton Metropolitan Authority
Fazal Khan & Associates
Davis Land Surveying, P.C.
Guaranty Survey Company
Grant Ward Surveyors
North Star Engineering, LLC
Giffels-Webster Engineers
George Jerome & Company
Michael J. Yambor Associates, Inc.
MCS Associates, Inc.
McNeely & Lincoln Associates, Inc.
King Surveyors & Associates, Inc.
RK Engineering & Survey Associates
RJ Donnelly & Associates, Inc.
Professional Engineering Associates

Rowe, Inc.
Hubble Roth & Clark
John Lansky
Wilcox Professional Services
RCMC
Bruen Land Surveying
SCCRC
Alpine Land Surveying, Inc.
McNamee, Porter & Seeley
Advanced Geomatics
GLA Surveyor
Mason L. Brown & Asso.
RA Duthler Land Surveyor
Project Control Engineering
Tetra Tech
Nowak & Fraus PLLC
Land Engineering Services
Michigan Consolidated Gas
Williams, Gorinac Assoc.
Urban Land Consultants
T & A, Inc.
Detroit Edison, ROW Div.
SSOE, Inc.
Spalding, DeDecker & Assoc
Kennedy Surveying, Inc.
JL Bishop Surveying
Reichert Surveying, Inc.
Metco Services

223-028
9-14-06

2006 REMON

MJD, CCB

D-2 ERIN TWP

No 2449

FIND BOLT SPIKE IN ASPH

EXISTING WITNESS TIES
DESC L. 3551 P. 300
192° 42.85 NE COR. 6 PRECAST CONC.
WALL REC. 42.93

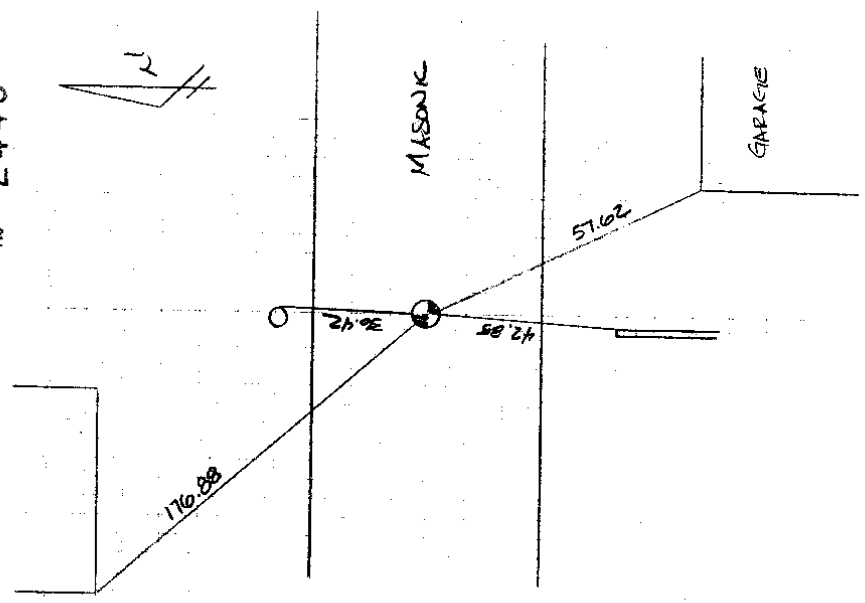
162° 57.62 NW COR GARAGE REC 57.64

319° 176.88 SW COR RESTAURANT BLDG. E. 1774

5° 36.42 FIND NAIL TAG & FILE UP
SET REMON ABOVE

PHOTO #
494
495
496
497
498

DOC
TOP
LOOKING NORTH
EAST
SOUTH
WEST



2006 Remon

223008
9-14-06
MUS CCB

DZ/D4 Accessories
223028 TR 15

PT #	DESC
559	FIND NEW TRAV SW COMMON & FINISHES
560	1/2" PIPE SW
561	1/2" PR S SIDE COMMON
562	1/2" PR S SIDE COMMON
563	1/2" P S SIDE COMMON
564	1/2" P SW COMMON & GREENHURST
565	3/8" PR N SIDE COMMON
566	1/2" PR N SIDE COMMON (IN CASE PART)
567	D-3 Remon # 3A70 IN BOX
568	1/2" PR N/CAP
569	1/2" PIPE W/CAP 43 Pcs S OF D-3
570	D-2 FB BOAT SPIKE
571	E-2 Remon IN BOX
572	C-2 Remon IN BOX
573	D-1 Remon IN BOX

9-15-06
MUS CCB

223028 TR 16

No 2449

PT #	DESC
574	F 1/2" PR
575	FD 1/2" PR
576	1/2" PIPE
577	1/2" PR
578	REI # 25829
579	1/2" PR NW MASONIC & BEACON
580	1/2" PIPE
581	1/2" PIPE
582	SOUND IN DENWAY
583	1/2" PIPE
584	1/2" PIPE
585	1/2" PIPE
586	1/2" PIPE

LAND CORNER RECORDATION CERTIFICATE

FILING REQUIREMENT OF ACT 74, MICH. P.A.1970

FOR CORNERS OF:-	ERIN	LOCATED IN:-	SECT. 5	CORNER CODE NUMBER
1. PUBLIC LAND SURVEY	5	T. 1	N. R. 13 E. X.	D-2
2. PROPERTY CONTROLLING IN SECTION		T.	N. S. R. E. W.	
3. MISCELLANEOUS PROPERTY IN SECTION		T.	N. S. R. E. W.	
4. LOT NO.		RECORDED PLAT		
5. PRIVATE CLAIMS				

A824552
 RECORDED IN MACOMB COUNTY
 RECORDS AT: 9:24 A. M.
 OCT 18 1983
Edna Hill
 CLERK - REGISTER OF DEEDS
 MACOMB COUNTY, MICHIGAN
 REGISTER OF DEEDS STAMP AND
 FILING NUMBER

I, William E. Soderberg do hereby certify that under requirements of P.A. 74, Michigan P.A. of 1970, the corner points mentioned in lines 1 and 2 above (identified with circles on index code diagram - over) were, in a field survey on December 1 1980, established, re-established, monumented, re-monumented, recovered or restored as expressed below and in conformance with regulations and rules therefore as required in the current manual of survey instructions of the United States Department of the Interior, Bureau of Land Management or by a decree of a court of law. Furthermore, that the corner points mentioned in lines 3, 4 and 5 above were, in a field survey on 19 found, recovered, restored, established or re-established as expressed below and in conformance with the rules of the Michigan State Board of Registration for Land Surveyors or, by a Decree of a Court of law:

A. Description of original monument and accessories and/or subsequent restoration:

B. Description of corner evidence found and/or method applied in restoring or re-establishing corner:

C. Description of monument for corner and accessories established to perpetuate locating the position of the corner:

- D-2 CENTER POST (AS OCCUPIED), FOUND BOAT SPIKE (D-2)
- 186 S. 06° W. 42.93 N.E. CORNER 6' PRECAST CONCRETE WALL
- 156 S. 25° E. 57.64 N.W. CORNER GARAGE NORTH 113.78 S.W. CORNER 6' CONCRETE WALL
- 311 N. 49° W. 177.41 S.W. CORNER BUILDING

SIGNED BY William E. Soderberg DATE AUGUST 18, 1983

SURVEYOR'S MICHIGAN REGISTRATION NO. 17635

FOR STATE AND UNITED STATES AGENCIES:

SIGNED BY _____ DATE _____
CHIEF OF SURVEY PARTY

APPROVED AND SIGNED BY _____ DATE _____
MICHIGAN REGISTERED LAND SURVEYOR



SURVEYOR'S MICHIGAN REGISTRATION NO. _____

0118
D-2

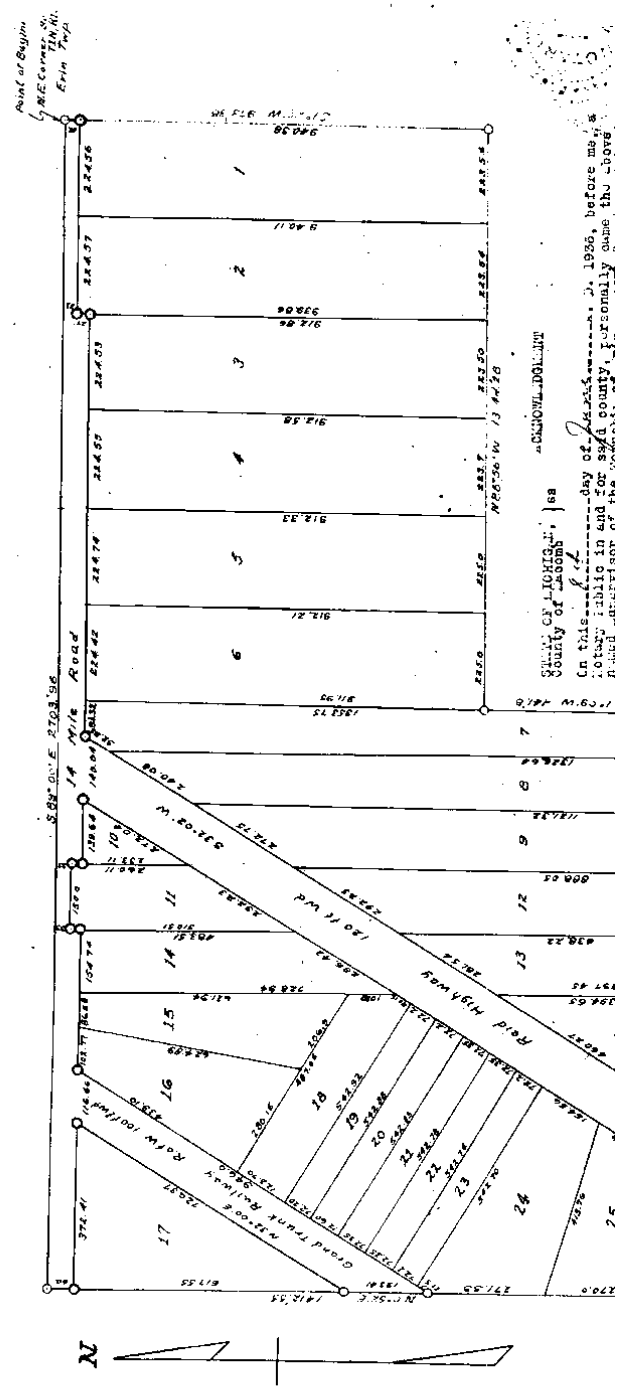
"Original"

"SUPERVISORS PLAT No 2," PART OF NE 1/4 SEC 5, T14N, R13E, ERIN TOWNSHIP MACOMB COUNTY, MICHIGAN

8650

Scale - 1 Inch = 200 Ft.

NOTE: All dimensions hereon are in feet and decimals thereof.



ASSESSOR'S PLAT OF HEATH FRASERVILLE LITTLE FARMS SUB.

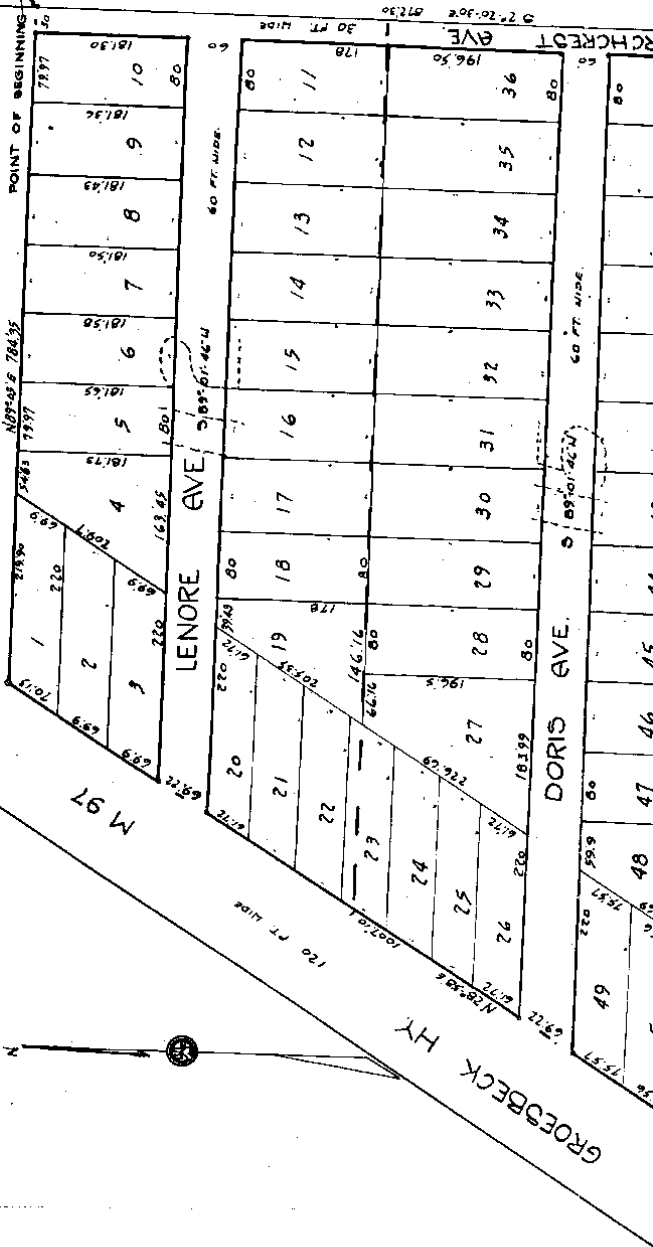
OF LOTS 112 & 115 OF ASSESSOR'S PLAT 6
OF VILLAGE OF FRASER, MACOMB CO., MICH.

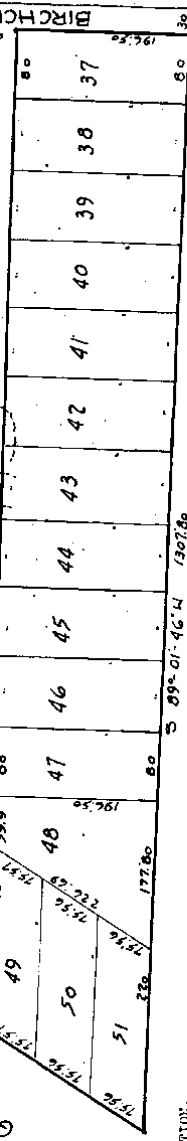
SCALE 1"=100'
0 15 30 45

Note: All dimensions in feet
WALTER J. LENNER
and decimals thereof. MT. CLEMENS, MICH.

38335
DEC 17 1974

REC. 5 TINSER
DEC 20 1974





DEDICATION.

KNOW ALL MEN BY THESE PRESENTS, That I, Adolph Eberlein assessor of the Village of Fraser, of Macomb County, State of Michigan, by virtue of authority in me vested by Section 51, Act 172, of 1929, having been duly designated by the Village Council, have caused the land described in the annexed plat to be surveyed, laid out and platted, in accordance with the provisions of the FRASERVILLE LITTLE FARMS SUB. ASSESSOR'S PLAT OF HEATH ASSESSOR'S PLAT No. 6, of Village of Fraser, Macomb Co., Mich., and that the streets as shown on said plat are now being used for such purposes.

Witness, Myself, Adolph Eberlein
 Assessor of the Village of Fraser.

Walter C. Steffens
 Notary Public in and for Macomb County,
 State of Michigan.

SS.

On this Ninth day of September, A.D. 1941 before me, a Notary Public in and for said county, personally came the above named Adolph Eberlein, Assessor of Fraser Village, known to me to be the person who executed the above dedication, and acknowledged the same to be his free act and deed as such Assessor.

Walter C. Steffens
 Notary Public in and for Macomb County.
 My commission expires 11-19-42

SURVEYOR'S CERTIFICATE.
 I hereby certify that the plat heron delineated is a correct one and that permanent metal monuments consisting of bars not less than one half inch in diameter and 48 inches in length, and a concrete cylinder at least 4 inches in diameter and 48 inches in height, have been placed at points marked (c) as thereon shown, and that the boundaries of the land platted, at all intersections in the streets, and at the intersections of streets with the boundaries of the plat as shown on said plat.

Walter C. Steffens
 Registered Land Surveyor.

CERTIFICATE OF MUNICIPAL APPROVAL.
 This plat was approved by the Village Council of the Village of Fraser, at a meeting held September 4, A.D. 1941.

CERTIFICATE OF APPROVAL BY COUNTY BOARD.
 This plat was approved on the 26th day of Jan. A.D. 1941.

Richard E. Cold
 Village Clerk.
 Richard E. Cold
 Joseph V. Trumbull
 Guy L. Brown
 County Clerk.
 Carl E. Brandenburg
 County Treasurer.

REGISTER'S OFFICE
 County of Macomb
 Registered
 in Lot 37
 of the
 FRASERVILLE LITTLE FARMS SUB. ASSESSOR'S PLAT OF HEATH ASSESSOR'S PLAT No. 6, of Village of Fraser, Macomb Co., Mich.

DESCRIPTION OF LAND PLATTED.
 The land embraced in the annexed plat of ASSESSOR'S PLAT OF HEATH FRASERVILLE LITTLE FARMS SUB. ASSESSOR'S PLAT No. 6 of the Village of Fraser, Macomb Co., Mich., is described as follows:
 at a point 766.6 ft. S. 22° 20' 15" E. of the center point of Sec. 5, T. 1 N., R. 13 E., and the corner of the S. 20° 15' 30" E. 573.50 ft. thence S. 69° 41' 15" E. 127.25 ft. thence S. 22° 20' 15" E. 127.25 ft. thence S. 22° 20' 15" E. to the place of beginning.

Examined and approved
 Richard E. Cold
 Village Clerk

177

ASSESSOR'S PLAT No 5
 OF LOTS 1, 2, 3 AND PARTS OF 4, 5 & 6 OF THE SUB-
 DIVISION OF N.W. 1/4 OF SEC. 5, AND N.E. 1/4 & N.E. 1/4
 OF N.W. 1/4 OF SEC. 6, T.14N. R.13E.
VILLAGE OF FRASER,
 MACOMB COUNTY, MICHIGAN.

Description of Land Plat

The land embraced in the annexed plat 1, 2, 3 and parts of 4, 5 & 6 of the Subdivision of N.W. 1/4 of Sec. 5, T.14N. R.13E. Village of Fraser, Macomb Co. 1, 2 and 3 and parts of lots 4, 5 and 6 of the Subdivision N.W. 1/4 of Sec. 6, T.14N. R.13E. as platted by L.B. Mixer is on page 157 and is bounded as follows: Common sections 5 and 6, T.14N. R.13E. 448.97 feet north of sections: Thence N.23°10'14"W. 746.43 feet; Thence said section line; Thence S.1°35'30"E. along said section 5, N.87°59'5"E. 2246.80 feet to the easterly Grand Trunk Railway; Thence N.29°19'24"E. along said section 6; Thence S.1°54'50"E. along said section 5; Thence S.88°20'28"W. along quarter line 250 feet to beginning, EXCEPT THE G.T. RAILWAY RIGTHS

Dedication.

KNOW ALL MEN BY THESE PRESENTS, That of the Village of Fraser, Macomb county, State of Michigan, vested by Section 51, Act 172 of 1929, having been mission, have caused the land described in the platted, to be known as "Assessor's Plat No 5 of lots 1, 2, 3 of NW 1/4 of Sec. 5, and NE 1/4 & NE 1/4 of NW 1/4 of Sec. 6, T.14 county, Michigan;" and that the streets and alleys as shown for such purposes.

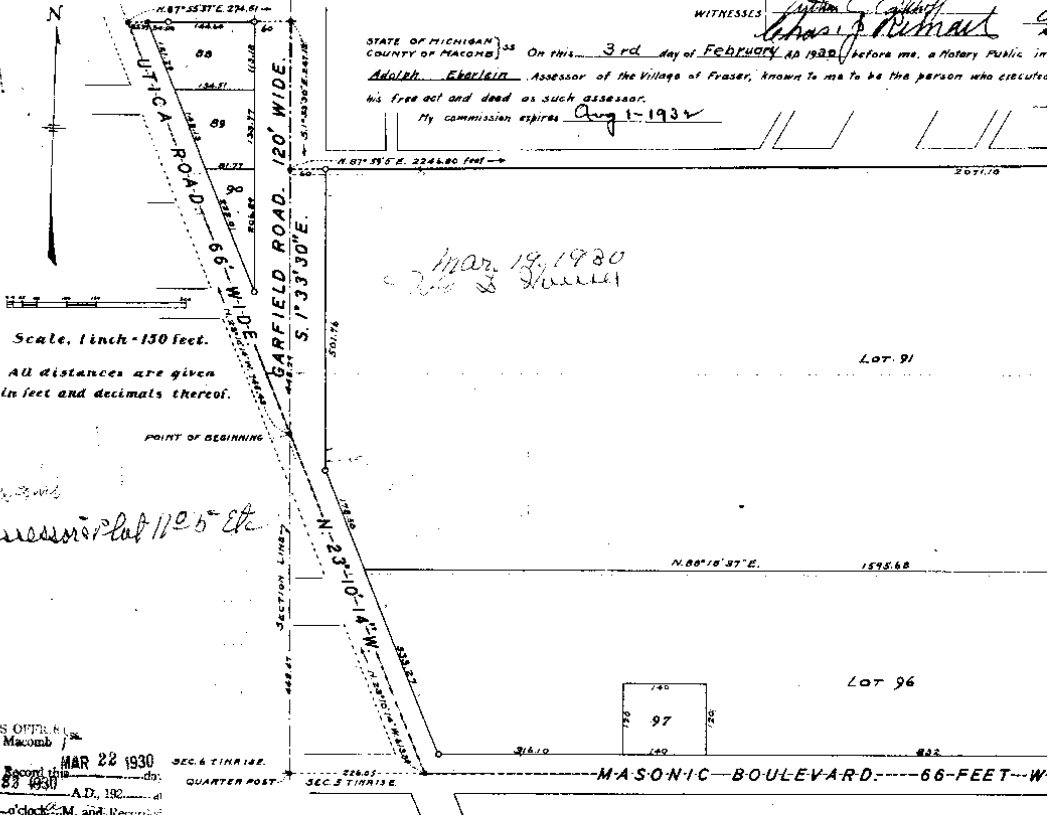
WITNESSES: John C. Egan & James P. Whelan

Surveyor's Certificate.

I hereby certify that the plat hereon delineated is a correct one and that permanent metal monuments of not less than one inch in diameter and fifteen inches in length set in a concrete base at least four inches in diameter and forty eight inches in depth have been placed at points marked thus O as thereon shown at all angles in the boundaries of the land platted, at all the intersections of streets, intersections of alleys, or at streets and alleys, and at the intersections of streets and alleys with the boundaries of the plat as shown on the plat.

Edmund Fred
 REGISTERED CIVIL ENGINEER.

STATE OF MICHIGAN }
 COUNTY OF MACOMB } On this 3rd day of FEBRUARY AD 1930 before me, a Notary Public in and for said county, Adolph Ebenlein Assessor of the Village of Fraser, known to me to be the person who executes his free act and deed as such assessor. My commission expires Aug 1-1932



Mar. 19, 1930
W. & S. Whelan

Assessor's Plat No 5 etc

REGISTERED OFFICE
 County of Macomb
 Received for Record this MAR 22 1930 day of MAR A.D. 1930 at 11 o'clock A.M. and Returned to Librarian 14 of State at 11 o'clock A.M. of State
Whelan Registrar.

L. 14
p. 29

See Replat of part of Lot 91, Liber 36 of Plats

L. 14
P. 29

ced.
 Assessor's Plat No 5 of lots
 of NW $\frac{1}{4}$ of Sec. 5, and NE $\frac{1}{4}$ and NE $\frac{1}{2}$ of
 county, Michigan, comprises all of lots
 of NW $\frac{1}{4}$ of Sec. 5 and NE $\frac{1}{4}$ and NE $\frac{1}{2}$ of
 in 1853 and recorded in Liber 25 of Deeds
 of a point in the line between
 of the quarter post common to said
 thence N. 87° 55' 37" E. 274.51 feet to afore-
 section line 247.15 feet: Thence in
 uly boundary of the right-of-way of the
 right-of-way 925.46 feet to quarter line of
 1828.09 feet to center post of said
 2504.80 feet: Thence N. 23° 10' 14" W. 613.84
 (1853-1854)

Certificate of Approval by County Board.

This plot was approved on the 14th day of February, 1930

Charles H. ... JUDGE OF PROBATE.
James A. ... COUNTY CLERK
William M. ... COUNTY TREASURER.

Certificate of Municipal Approval.

This plot was approved by the Commission of the Village of Fraser
 at a meeting held February 10, 1930

Walter ...
 VILLAGE CLERK

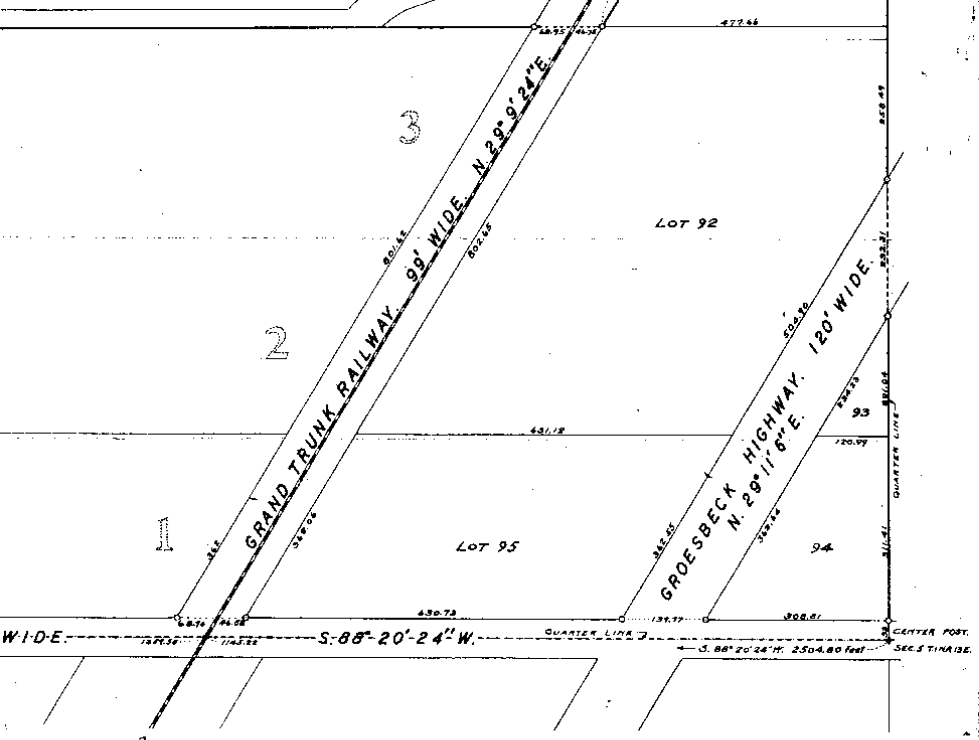
1102.19.1180
E. L. ...

at T. Adolph ... Assessor
 Michigan, by virtue of authority in me
 man duly authorized by the Village Com-
 missioned plat to be surveyed, laid out and
 1, 2, 3 and parts of 4, 5, 6 of the Subdivision
 T. 1 N. R. 13 E. Village of Fraser, Macomb
 shown on said plat are now being used

Adolph ...
 ASSESSOR OF THE VILLAGE OF FRASER.

in and for said County, personally came the above named
 and the above dedication, and acknowledged the same to be

E. J. ...
 NOTARY PUBLIC IN AND FOR MACOMB COUNTY.



see page 3 See dedication & comment of Liber 1148 page 49

8/19/10

ASSESSOR'S PLAT No 5
 OF LOTS 1, 2, 3 AND PARTS OF 4, 5 & 6 OF THE SUB-
 DIVISION OF N.W. 1/4 OF SEC. 5, AND N.E. 1/4 & N.E. 1/4
 OF N.W. 1/4 OF SEC. 6, T.11N. R.13E.
VILLAGE OF FRASER,
 MACOMB COUNTY, MICHIGAN.

Description of Land Platted.

The land embraced in the annexed plat of Assessor's Plat No 1, 2, 3 and parts of 4, 5 & 6 of the Subdivision of N.W. 1/4 of Sec. 5, and N.E. 1/4 & N.E. 1/4 of Sec. 6, T.11N. R.13E. Village of Fraser, Macomb county, Michigan, comprise 1, 2 and 3 and parts of lots 4, 5 and 6 of the Subdivision of N.W. 1/4 of Sec. 5 and N.E. 1/4 & N.E. 1/4 of Sec. 6, T.11N. R.13E. as platted by L.B. Michener in 1853 and recorded in 4 on page 157 and is bounded as follows: Commencing at a point in the li sections 5 and 6, T.11N. R.13E. 448.47 feet north of the quarter post corner sections: Thence N.23°10'14"W 745.43 feet; Thence N.87°55'37"E 274.51 said section line; Thence S.153°30'E along said section line 247.13 feet section 5, N.87°59'5"E 2246.80 feet to the easterly boundary of the right-of-way Grand Trunk Railway; Thence N.29°24'E along said right-of-way 925.46 feet to q said section 6. Thence S.156°58"E along said line 1828.09 feet to center p section: Thence S.88°20'24"W along quarter line 2506.80 feet; Thence N.23°10'14" feet to beginning; EXCEPT THE G.T. RAILWAY RIGHT-OF-WAY.

Dedication.

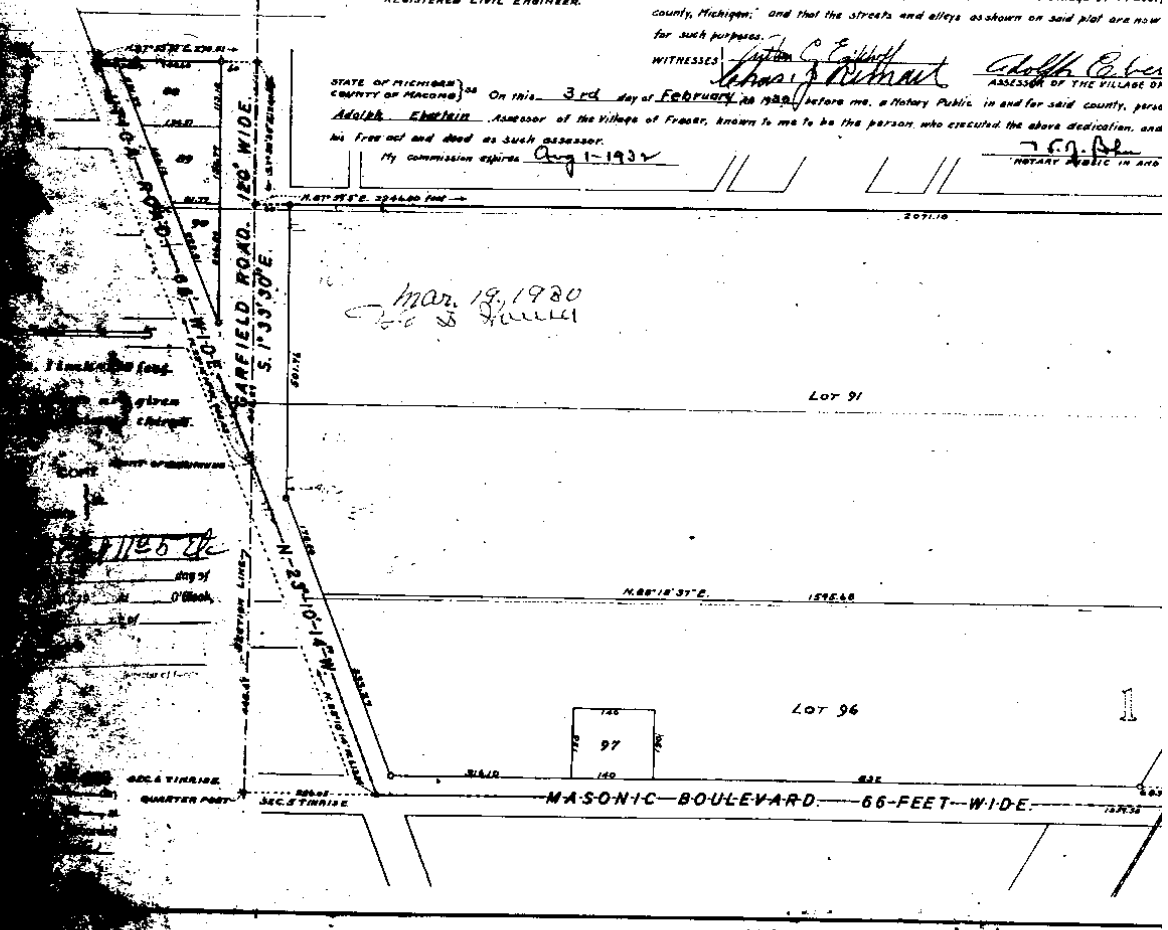
KNOW ALL MEN BY THESE PRESENTS, That I, Adolph Eberlein, of the Village of Fraser, Macomb county, State of Michigan, by virtue of auth. vested by Section 51, Act 172 of 1929, having been duly authorized by the mission, have caused the land described in the annexed plat to be surveyed, platted, to be known as "Assessor's Plat No 5 of lots 1, 2, 3 and parts of 4, 5 & 6 of N.W. 1/4 of Sec. 5, and N.E. 1/4 & N.E. 1/4 of N.W. 1/4 of Sec. 6, T.11N. R.13E. Village of Fraser, county, Michigan," and that the streets and alleys as shown on said plat are now for such purposes.

WITNESSES: John C. F. [Signature] Adolph Eberlein
 Assessor of the Village of Fraser
 On this 3rd day of February, 1930, before me, a Notary Public in and for said county, pers. Adolph Eberlein Assessor of the Village of Fraser, known to me to be the person who executed the above dedication, and his free act and deed as such assessor.
 My commission expires Aug 1-1932

Surveyor's Certificate.

I hereby certify that the plat hereon delineated is a correct one and that permanent metal monuments of not less than one inch in diameter and fifteen inches in length set in a concrete base at least four inches in diameter and forty-eight inches in length have been placed at points marked thus \odot as hereon shown of all angles in the boundary line of the land platted, at all the intersections of streets, intersections of alleys, of streets and alleys, and at the intersections of streets and alleys with the boundaries of the plat as shown on the plat.

Delmar J. [Signature]
 REGISTERED CIVIL ENGINEER.



STATE OF MICHIGAN }
 COUNTY OF MACOMB }
 On this 3rd day of February, 1930, before me, a Notary Public in and for said county, pers. Adolph Eberlein Assessor of the Village of Fraser, known to me to be the person who executed the above dedication, and his free act and deed as such assessor.
 My commission expires Aug 1-1932

Adolph Eberlein
 ASSESSOR OF THE VILLAGE OF FRASER
J. C. F. [Signature]
 NOTARY PUBLIC IN AND FOR SAID COUNTY

Certificate of Approval by County Board.

This plat was approved on the 14th day of February, 1930
Charles H. Johnson JUDGE OF PROBATE
Joseph A. Hartung COUNTY CLERK
William M. Wood COUNTY TREASURER

Certificate of Municipal Approval.

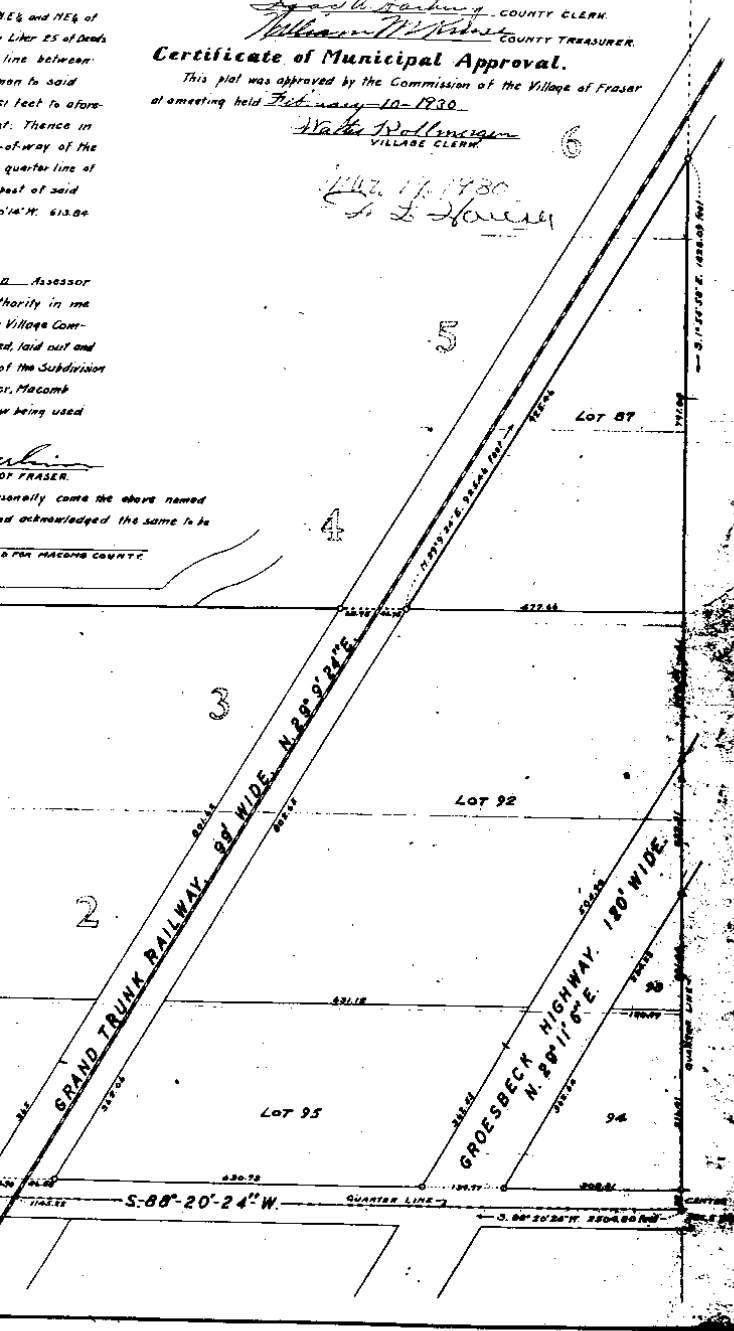
This plat was approved by the Commission of the Village of Fraser
at a meeting held February 10, 1930.
Walter R. Hollenberger VILLAGE CLERK

147. 17. 1930
L. L. Harvey

7/8 S of lots
& and NE 1/4 of
lots all of lots
NE 1/4 and NE 1/4 of
Liber 25 of Deeds
line between
to said
feet to afore-
st. Thence in
of-way of the
quarter-line of
beat of said
S 1/4 N. 613.00

Assessor
thority in me
Village Com-
nd, laid out and
of the Subdivision
or, Macomb
w being used

personally came the above named
and acknowledged the same to be
IN THE MACOMB COUNTY.



214 P-7

Resubdivision of Section 29

ASSESSOR'S PLAT No 6
 OF LOTS 4, 5, 6 & 13 AND PARTS OF 3 & 7
 OF THE SUBDIVISION OF THE S.W. 1/4
 OF SEC. 5, IN T.14.R.13 E.
VILLAGE OF FRASER,
 MACOMB COUNTY, MICHIGAN.

1988

Description of Land Platted.

The land embraced in the annexed plat of Assessor's Plat No 6 of Lots 4, 5, 6 & 13 and parts of 3 & 7 of the Subdivision of the S.W. 1/4 of Sec. 5 in T.14.R.13 E. Village of Fraser, Macomb County, Michigan, comprises all of lots 4, 5, 6 & 13 and parts of lots 3 and 7 of the Subdivision of the S.W. 1/4 of Sec. 5 in T.14.R.13 E. as platted by L.B. Mixer in 1887 and recorded in Liber Y of Deeds on page 470, and is bounded as follows: Commencing at a point in the east and west quarter line of section 5, T.14.R.13 E. 54 feet east of the west quarter post thereof: Thence N. 88° 20' 24" E. along said quarter line 2476.85 feet to the center post of said section: Thence S. 2° 5' 52" E. along the north and south quarter line of said section nearest post: Thence S. 87° 26' 18" N. 1007.75 feet to center line of Utica Road: Thence N. 22° 10' 05" W. along said center line 1619.04 feet: Thence S. 75° 47' 18" N. 163.21 feet: Thence N. 22° 10' 05" W. 153.28 feet to beginning (CORNER OF THE G.T. RAILWAY RIGHT OF WAY).

Dedication.

KNOW ALL MEN BY THESE PRESENTS, That I, Adolph Charlein Assessor of the Village of Fraser, Macomb County, State of Michigan, by virtue of authority as provided by Section 31, Act 172 of 1929, having been duly authorized by the Village Commission, have caused the land described in the annexed plat to be surveyed, laid out and platted, to be known as Assessor's Plat No 6 of Lots 4, 5, 6 & 13 and part of 3 & 7 of the Subdivision of the S.W. 1/4 of Sec. 5, in T.14.R.13 E. Village of Fraser, Macomb County, Michigan; and that the streets and alleys as shown on said plat are now being used for such purposes.

WITNESSE William C. Fitch Adolph Charlein
 Notary Public in and for Macomb County Assessor of the Village of Fraser

On this 3rd day of FEBRUARY, A.D. 1930, before me, a Notary Public in and for said county, personally came the above named Adolph Charlein, Assessor of the Village of Fraser, known to me to be the person who executed the above dedication, and acknowledged the same to be his free act and deed as such Assessor.
 My commission expires Aug 1-1931 W. C. Fitch
 NOTARY PUBLIC IN AND FOR MACOMB COUNTY

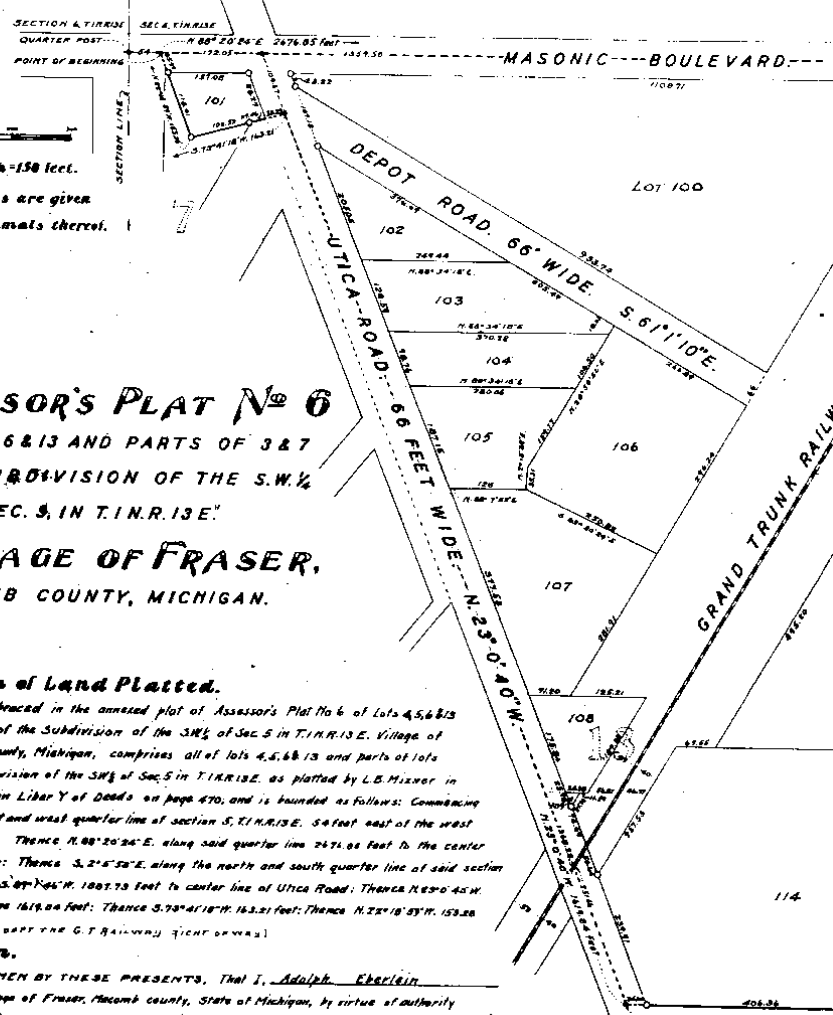
Surveyor's Certificate.

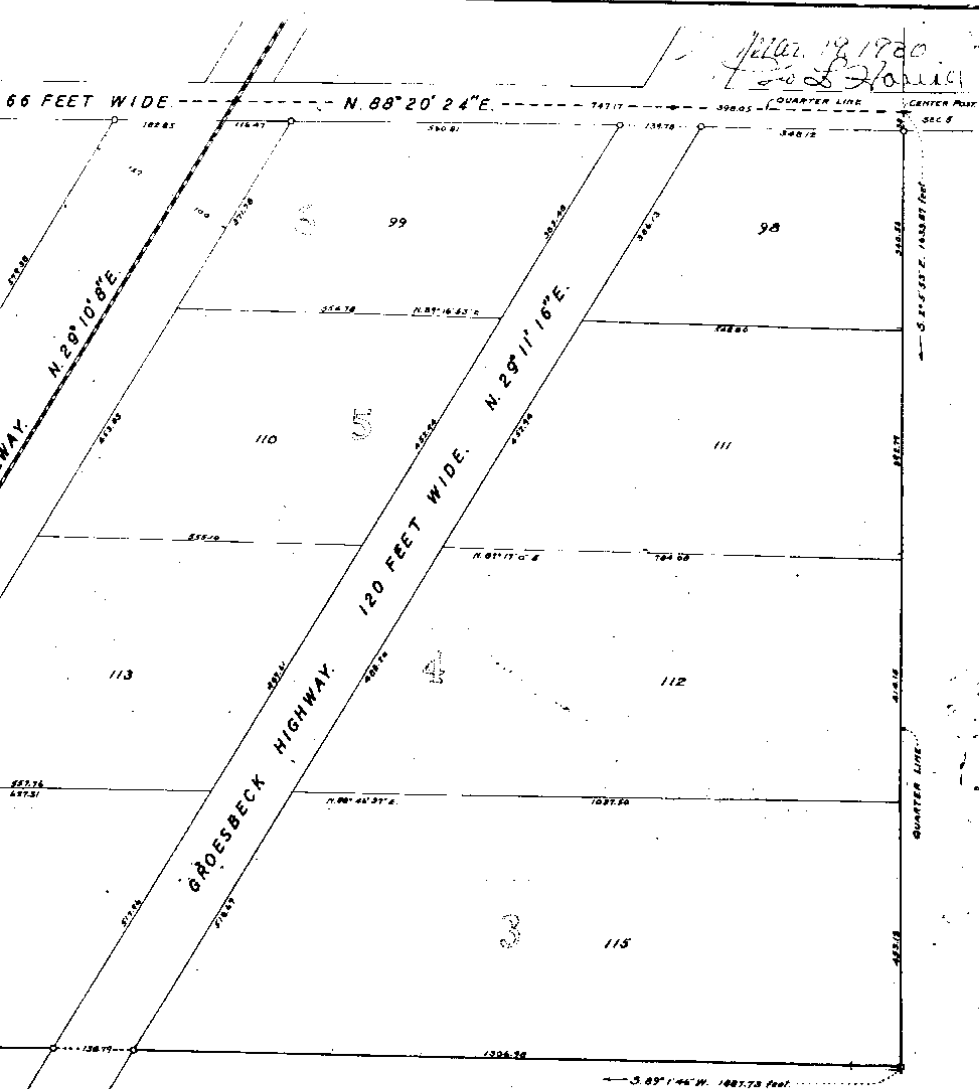
I hereby certify that the plat hereon set forth permanent metal monuments of not less than 1/2 inches in length set in a concrete base of least 1/2 inches in depth have been placed at points marked in the boundaries of the land platted, at sections of alleys, or of streets and alleys, and with the boundaries of the plat as shown on the

Certificate of Approval

This plat was approved of the 11th
Charles H. ...
...
...

Scale, 1 inch = 150 feet.
 All distances are given in feet and decimals thereof.





Filed 19 1930
 J. S. Hollings

Certificate of Municipal Approval.
 This plat was approved by the Commission of the Village of Fraser at a meeting held February 10, 1930.
Walter J. Hollings
 VILLAGE CLERK.

...is a correct one and that
 than one inch in diameter and fifteen
 at four inches in diameter and forty-eight
 marked thus as thereon shown at all
 of all the intersections of streets, inter-
 of all the intersections of streets and alleys
 the plat.

REGISTERED CIVIL ENGINEER.
 by County Board.
 day of February 1930
 JUDGE OF PROBATE.
 COUNTY CLERK.
 COUNTY TREASURER

Witness my hand this 20th day
 of March A.D. 1930
 at Fraser in the County of Fraser
 in the Province of Alberta
Angus C. Whiting

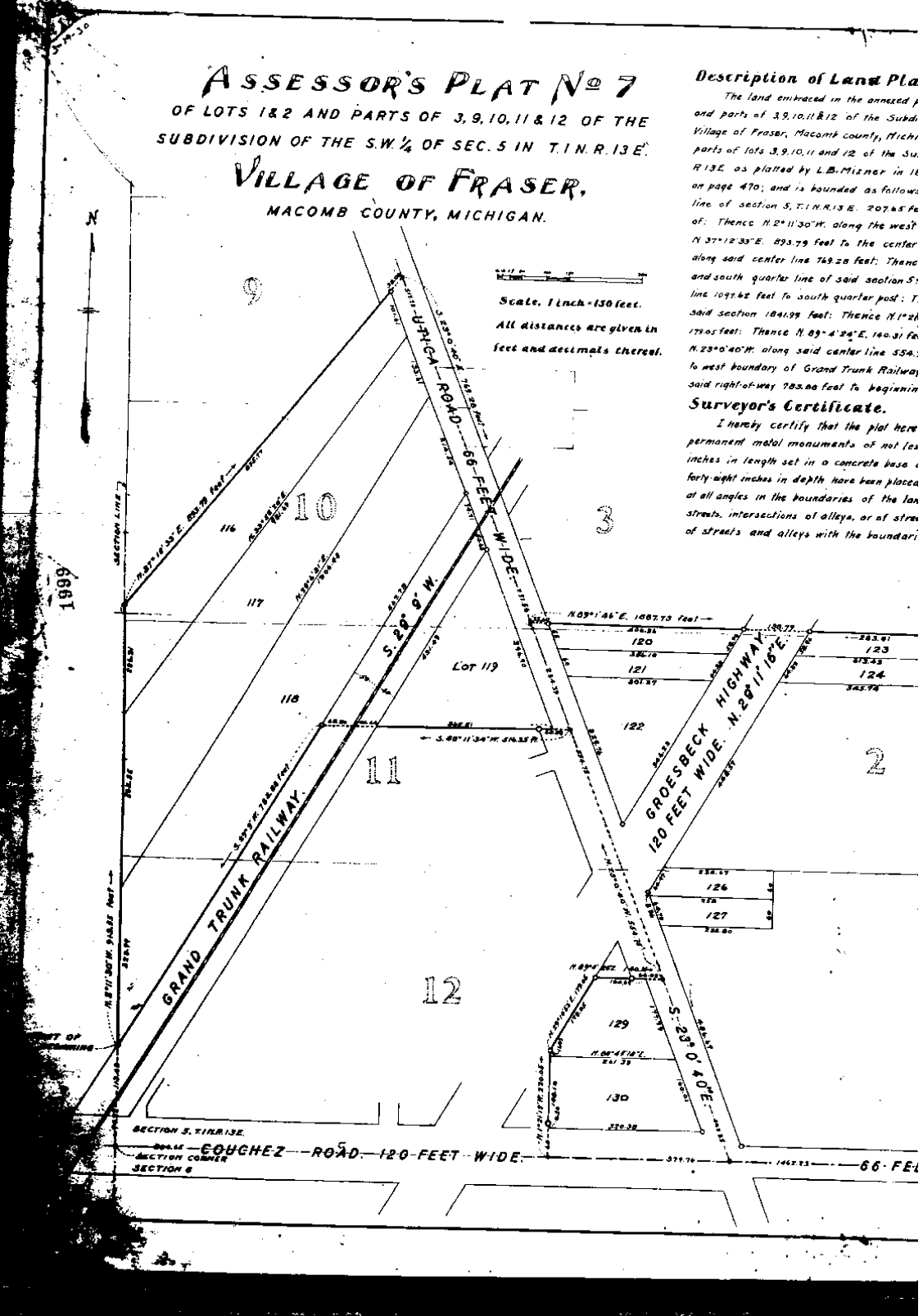
ASSESSOR'S PLAT No 7
 OF LOTS 1 & 2 AND PARTS OF 3, 9, 10, 11 & 12 OF THE
 SUBDIVISION OF THE S.W. 1/4 OF SEC. 5 IN T.1 N. R. 13 E.
VILLAGE OF FRASER,
 MACOMB COUNTY, MICHIGAN.

Description of Land Plat

The land embraced in the annexed plat and parts of 3, 9, 10, 11 & 12 of the Subd. Village of Fraser, Macomb County, Mich. parts of lots 3, 9, 10, 11 and 12 of the S.W. 1/4 of section 5, T.1 N. R. 13 E. as platted by L.B. Mizner in 1887 on page 470; and is bounded as follows: line of section 5, T.1 N. R. 13 E. 207.45 feet; Thence N. 2° 11' 30" W. along the west N. 37° 12' 33" E. 893.79 feet to the center along said center line 769.28 feet; Thence and south quarter line of said section 5; line 1097.62 feet to south quarter post; Thence said section 1041.09 feet; Thence N. 1° 24' 17.05 feet; Thence N. 89° 4' 24" E. 140.21 feet; Thence N. 23° 0' 40" W. along said center line 550.16 feet to west boundary of Grand Trunk Railway said right-of-way 782.66 feet to beginning

Surveyor's Certificate.

I hereby certify that the plat here permanent metal monuments of not less inches in length set in a concrete base forty-eight inches in depth have been placed at all angles in the boundaries of the lots, streets, intersections of alleys, or at street and alleys with the boundaries



Scale, 1 Inch = 130 feet.
 All distances are given in feet and decimals thereof.

1899

SECTION 5, T.1 N. R. 13 E.
 COUGHEZ ROAD - 120 FEET WIDE.
 SECTION CORNER
 SECTION 6

Mar. 19, 1930
 J. S. Haines

Platted.

Platted of Assessor's Plat No 7 of lots 182
 subdivision of the SW $\frac{1}{4}$ of Sec 5 in T11N R13E
 Michigan, comprises all of lots 1 and 2 and
 a subdivision of the SW $\frac{1}{4}$ of Sec 5 in T11N
 in 1852 and recorded in Liber Y of Deeds
 follows: Commencing at a point in the west
 48 feet north of the south-west corner there-
 west line of said section 913.55 feet: Thence
 center line of Ulrica Road: Thence S 23° 0' 40" E
 distance N 89° 1' 46" E, 180.73 feet to the north
 on S: Thence S 2° 5' 55" E along said quarter
 of: Thence S 80° 45' 18" W along south line of
 1121.12 feet: Thence N 29° 10' 55" E
 31 feet to center line of Ulrica Road: Thence
 S 54° 25' feet: Thence S 80° 11' 34" W, 516.55 feet
 railway Co's right-of-way: Thence S 29° 9' W along
 center line of said railway right-of-way.

hereon delineated is a correct one and that
 of less than one inch in diameter and fifteen
 or at least four inches in diameter and
 placed at points marked thus \odot as thereon shown
 a land platted, at all the intersections of
 streets and alleys, and at the intersections
 of boundaries of the plat as shown on the plat.

Dedication.

KNOW ALL MEN BY THESE PRESENTS, That I, Adolph Eberlein
 Assessor of the Village of Fraser, Macomb County, State of Michigan, by virtue of
 authority in me vested by Section 51, Act 172 of 1929, having been duly authorized
 by the Village Commission, have caused the land described in the annexed plat
 to be surveyed, laid out and platted, to be known as Assessor's Plat No 7 of lots
 182 and parts of 3, 9, 10, 11 & 12 of the Subdivision of the SW $\frac{1}{4}$ of Sec 5 in T11N
 R13E, Village of Fraser, Macomb County, Michigan, and that the streets and
 alleys as shown on said plat are now being used for such purposes.

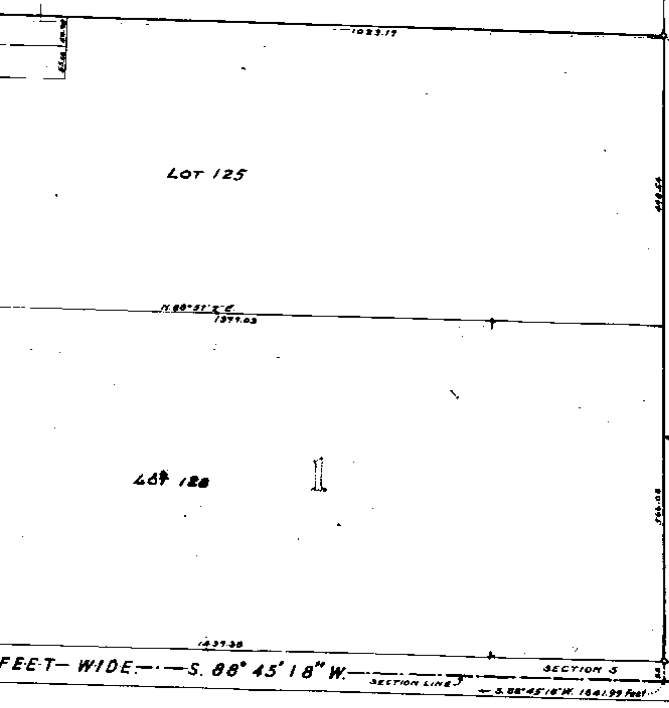
WITNESSES: Arthur C. Fiddell
Charles J. Wenzel Edolph E. Charles
 ASSESSOR OF THE VILLAGE OF FRASER
 STATE OF MICHIGAN }
 COUNTY OF MACOMB } On this 3rd day of February AD. 1930
 before me, a Notary Public in and for said county, personally came the above
 named Adolph Eberlein Assessor of the Village of Fraser, known to me
 to be the person who executed the above dedication, and acknowledged the same
 to be his free act and deed as such Assessor.
 My commission expires Aug 1-1932 W. F. J. Bohm
 NOTARY PUBLIC IN AND FOR MACOMB COUNTY.

Certificate of Municipal Approval.

This plat was approved by the Commission of the Village of Fraser at a
 meeting held February 10-1930
Walter Robinson
 VILLAGE CLERK.

Certificate of Approval by County Board.

This plat was approved on the 14th day of February 1930.
Charles H. Hummerich JUDGE OF PROBATE.
James A. Kark COUNTY CLERK.
William W. House COUNTY TREASURER.



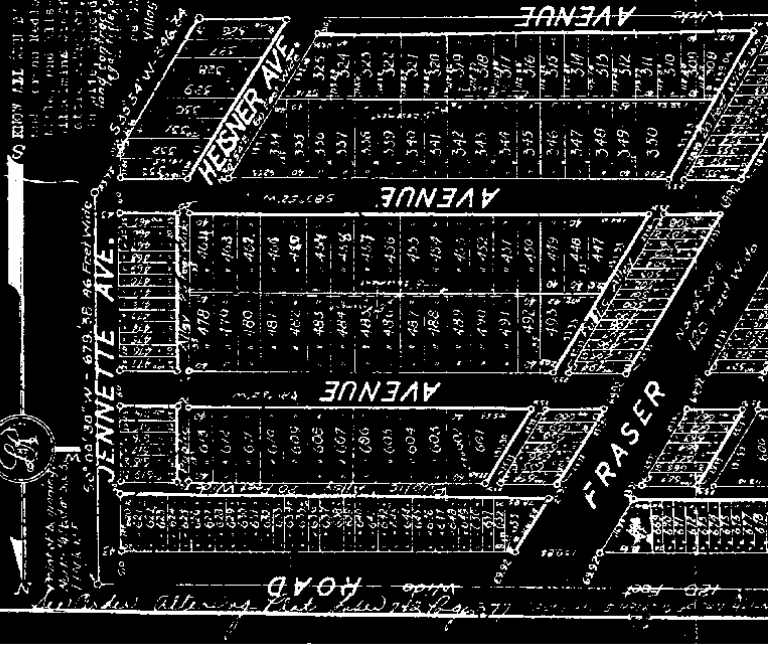
REGISTER'S OFFICE
 County of Macomb
 Received for Record this 20th day
 of March A.D. 1930 at
10 o'clock A.M. and Recorded
 in Liber 14 of Plats
 on Page 31
Hugh B. Whiting Register

PLAT OF GARFIELD PARK SUBDIVISION NO. 1.

Being part of the NW 1/4 of Section 5, T19N13E,
Village of Fraser, Macomb County, Michigan.
Sector, 1 inch = 150 feet.

D.S.C. 1826
MAY 1916

All dimensions given in feet and decimals thereof.



STATE OF MICHIGAN,
County of Macomb.

I, the undersigned, County Clerk of said County, do hereby certify that the foregoing is a true and correct copy of the original record of the same as the same appears in the records of said County.

Witness my hand and the seal of said County, at Fraser, Michigan, this 15th day of May, 1916.

CLERK OF COUNTY

By _____

STATE OF MICHIGAN,
County of Macomb.

I, the undersigned, County Clerk of said County, do hereby certify that the foregoing is a true and correct copy of the original record of the same as the same appears in the records of said County.

Witness my hand and the seal of said County, at Fraser, Michigan, this 15th day of May, 1916.

CLERK OF COUNTY

By _____

EXHIBIT
 2-1-1926
 F. R. Fraser

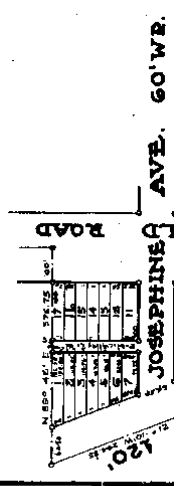
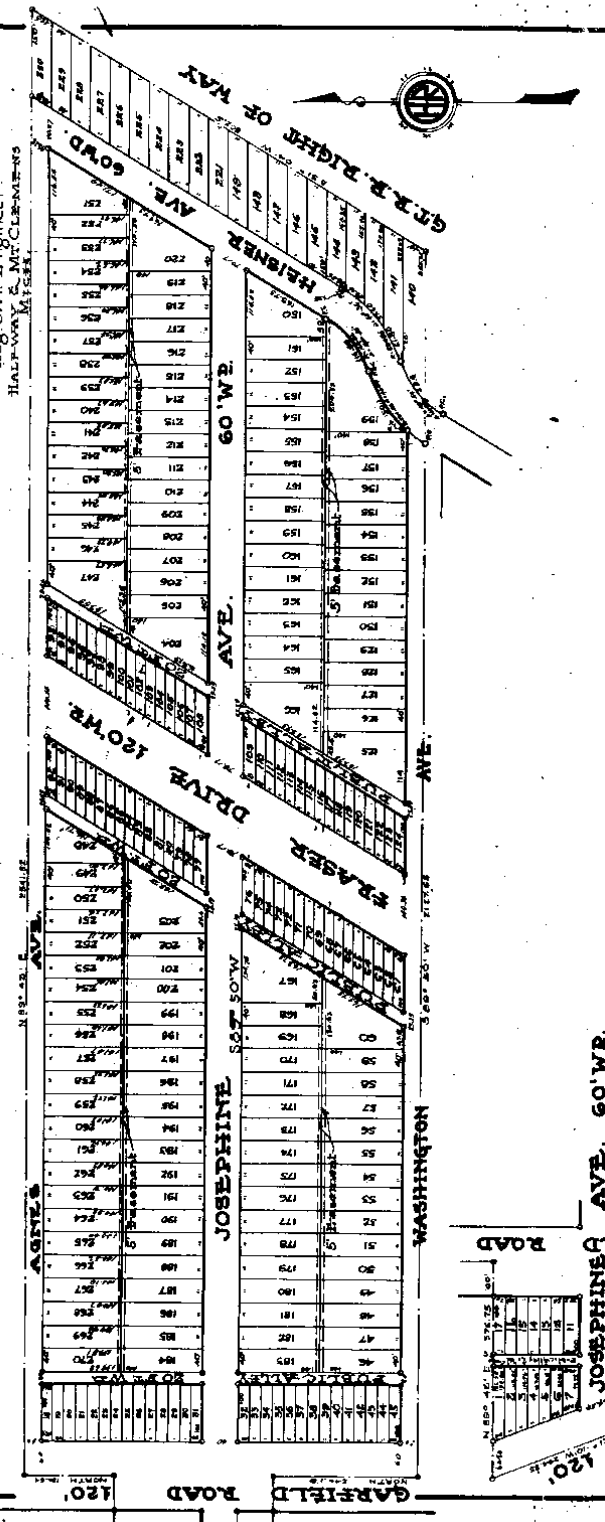
GARFIELD PARK SUBDIVISION

OF PART OF THE NE. 1/4 OF SEC. 6 (PART OF THE N.W. 1/4 OF SEC. 6 T. 1 N. R. 15 E.)
 VILLAGE OF FRASER, MICHIGAN

MACOMB CO. 6973

SCALE: 1"=150'

H. O. MARA
 Reg. Civil Engineer
 HALF-WAY S. MT. CLEMENS
 MICH.



JOSEPHINE AVE. 60' W.R.

ROAD DISTRICT OFFICE

ALL MAPS BY THESE MEANS. That to JOSEPH G. HERGENROTHER

as proprietors, have caused the land embraced in the annexed plat to be surveyed, laid out and platted, to be shown as 'GARFIELD PARK SUBDIVISION' of part of the N. W. 1/4 of Sec 6 and part of the N. W. 1/4 of Sec 5 of T. 1 N. R. 13 E. Village of Fraser, Macomb Co., Michigan and also as streets and alleys as shown on said plat and hereby dedicated to the use of the public.

Signed and Sealed in presence of Joseph G. Hergenrother (L.S.) and Frederick Schwaner (L.S.)

STATE OF MICHIGAN, 1928 County of Macomb.

On this 9th day of July, 1928, before me, a Notary Public in and for said county, personally came the above named, JOSEPH G. HERGENROTHER, FREDERICK SCHWANER, JOSEPHINE HERGENROTHER, HIS WIFE and FRANK HERGENROTHER, HIS WIFE known to me to be the persons who executed the above indication and acknowledged the same to be their free act and deed.

My Commission expires July 1-1928

WITNESSE MY HAND AND SEAL OF OFFICE IN WITNESS WHEREOF I have hereunto set my hand and seal of office this 9th day of July, 1928.

Received for Record this July 30-1928 in Book of Macomb County of Michigan

REGISTER'S CERTIFICATE

I hereby certify that the plat herein delineated is a correct one and that permanent metal monuments of not less than one inch in diameter and fifteen inches in length set in a concrete base at least four inches in diameter and forty-eight inches in depth have been placed at points marked thus (o) as thereon shown at intervals in the boundaries of the land platted, at all the intersections of the boundaries of all streets and alleys, and at the intersections of all streets and alleys with the boundaries of the plat as shown on said plat.

James A. Elliott

DESCRIPTION OF LAND PLATTED

The land embraced in the annexed plat of GARFIELD PARK SUBDIVISION of T. 1 N. R. 13 E. Village of Fraser, Macomb Co., Michigan, is described as follows: Beginning at a point in the center of Uticon Road (so-called), 1357.3 ft. N. 20° 10' W. of the intersection of the centerline of Uticon Road and the S. and W. line of Sec. 5 T. 1 N. R. 13 E. Village of Fraser, Macomb Co., Michigan, thence N. 21° 10' W. a distance of 284.35 ft. Thence N. 89° 40' E. a distance of 227.76 ft. Thence North a distance of 166.84 ft. Thence E. 89° 40' W. a distance of 244.26 ft. Thence S. 31° 04' W. a distance of 802.18 ft. Thence S. 89° 40' W. a distance of 218.65 ft. Thence North a distance of 284.88 ft. Thence S. 89° 40' W. a distance of 270.46 ft. to the point of beginning.

COUNTY TREASURER CERTIFICATE

I hereby certify that the above described land is not subject to any tax or other charge under any law of this State.

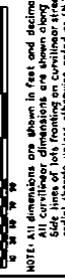
James A. Elliott

1075

VENETIAN VILLAGE WOODS

A SUBN. OF PART OF THE N.E. 1/4 OF SEC. 5, T.1 N., R.13 E.,
CITY OF FRASER, MACOMB CO., MICHIGAN.

SCALE--ONE INCH=100 FEET.



NOTE: All dimensions are shown in feet and decimals thereof. All curvilinear dimensions are shown along the arc. Solid lines of lots fronting on corridors or streets are public; those otherwise noted as (P.R.) are private.

WALTER AND WILSON Registered Civil Engineers and Land Surveyors, 20000 Grand Rapids, Michigan 49503, OCTOBER 26, 1957.

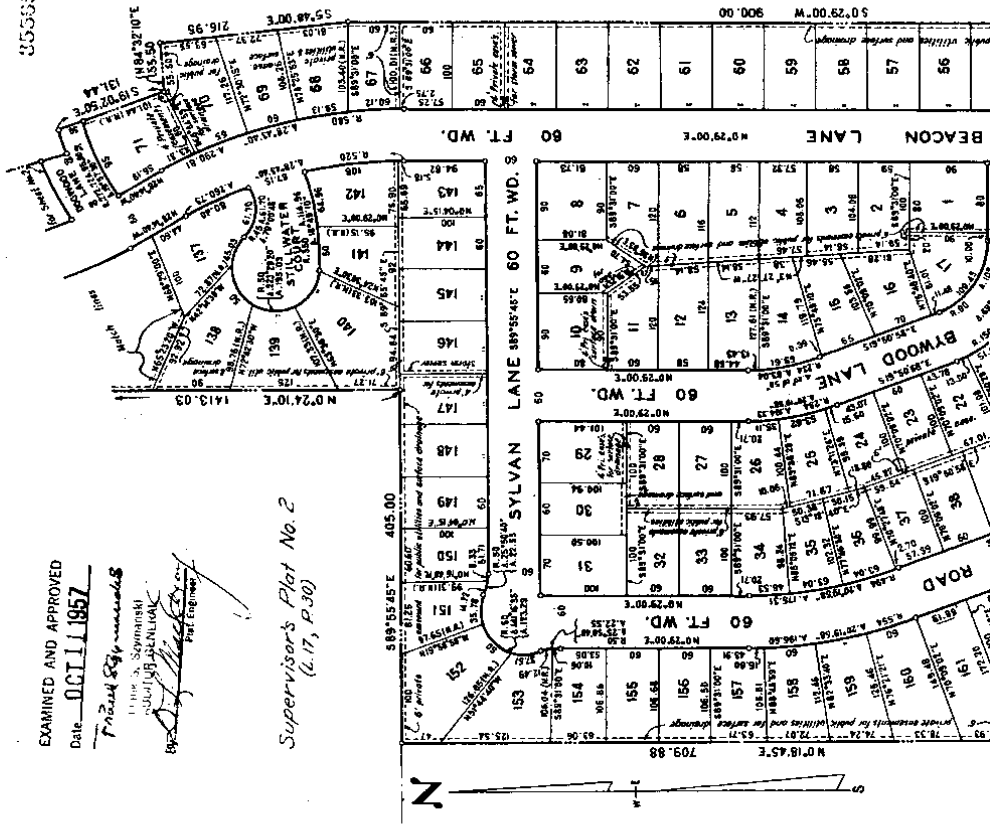
SHEET 1 OF 2

RECEIVED OCT 26 1957
COUNTY OF MACOMB
Register of Deeds
October 11, 1957
at 2:25 o'clock P.M. and recorded in Vol. 46 of Deeds, Page 523

355555

EXAMINED AND APPROVED
Date OCT 11 1957
Francis Szymanski
11100 S. SPRINGFIELD
ANN ARBOR, MICHIGAN
Professional Engineer

Supervisor's Plat No. 2
(L.17, P.30)



SURVEYORS CERTIFICATE

I HEREBY CERTIFY THAT THE PLAT HEREON DELINEATED IS A CORRECT ONE, AND THAT PERMANENT MONUMENTS CONSISTING OF IRON PIPES, EACH 1 1/2 INCH IN DIAMETER AND 36 INCHES IN LENGTH, ENCASED IN CONCRETE, 4 INCHES IN DIAMETER AND 36 INCHES IN LENGTH, ARE CLEARLY PLACED AT ALL POINTS MARKED THUS (O) AS SHOWN ON THE PLAT, ANGLES IN THE BOUNDARIES OF THE LAND PLATTED, AT ALL INTERSECTIONS OF THE LINES OF STREETS, AND AT INTERSECTIONS OF THE LINES OF STREETS WITH THE BOUNDARIES OF THE PLAT.

BURTON WARNER, REG. LAND SURVEYOR

DEDICATION

KNOW ALL MEN BY THESE PRESENTS, THAT WE, ARTHUR A. DAVIDSON AND IVA G. DAVIDSON, OWNER, DONATOR OF THE ESTATE OF EMMA E. ARBITTER, DEC'D, AS PROPRIETORS, AND CLARENCE H. BAUER AND A. GLENORE BAUER, HIS WIFE, AS PROPRIETORS, AND GENERAL ENTERPRISES, INC., A MICHIGAN CORPORATION, BY CHAS. J. MERRILL, PRESIDENT, AS VENDEES, HAVE CAUSED THE LAND EMBRACED IN THE ANNEXED PLAT TO BE SURVEYED, LAID OUT AND PLATTED, TO BE KNOWN AS "VENETIAN VILLAGE WOODS," A SUBN. OF PART OF THE N.E. 1/4 OF SEC. 5, T. 1 N., R. 13 E., CITY OF FRASER, MACOMB CO., MICHIGAN, AND THAT THE STRIP 545 SHOWN ON SAID PLAT ARE HEREBY DEDICATED TO THE USE OF THE STRIP 545 AS PRIVATE EASEMENTS AND UTILITIES, OR FOR THE USE OF SPECIFIC UTILITIES, OR SPECIFIC USES AS THEREON NOTED, SUBJECT TO THE REGULATION AND CONTROL OF THE USES THEREOF BY THE LOCAL GOVERNMENTAL AUTHORITIES, AND THAT NO PERMANENT STRUCTURES ARE TO BE ERRECTED WITHIN THE BOUNDARIES OF SAID EASEMENTS.

WITNESSES

John H. Besshoene
Arthur A. Davidson
Iva G. Davidson
Frederick G. Byss
Lona B. Byss
Clarence H. Bauer
A. Glendore Bauer
Henry G. Arbitter
The Estate of Emma E. Arbitter, Dec'd.

GENERAL ENTERPRISES, INC.
Albert Poole
CHAS. J. MERRILL, PRESIDENT

STATE OF MICHIGAN)
COUNTY OF MACOMB)
ON THIS DAY OF)
A.D. 1957, BEFORE ME, A NOTARY PUBLIC IN)
AND FOR SAID COUNTY, PERSONALLY CAME THE ABOVE NAMED ALBERT POOLE AND)
IVA G. DAVIDSON, HIS WIFE, AND FREDERICK B. BYSS AND LENA B. BYSS, HIS WIFE,)
AND CLARENCE H. BAUER AND A. GLENORE BAUER, HIS WIFE, KNOWN TO ME TO BE THE)
PERSONS WHO EXECUTED THE ABOVE DEED, AND ACKNOWLEDGED THE SAME TO BE)
THEIR FREE ACT AND DEED.

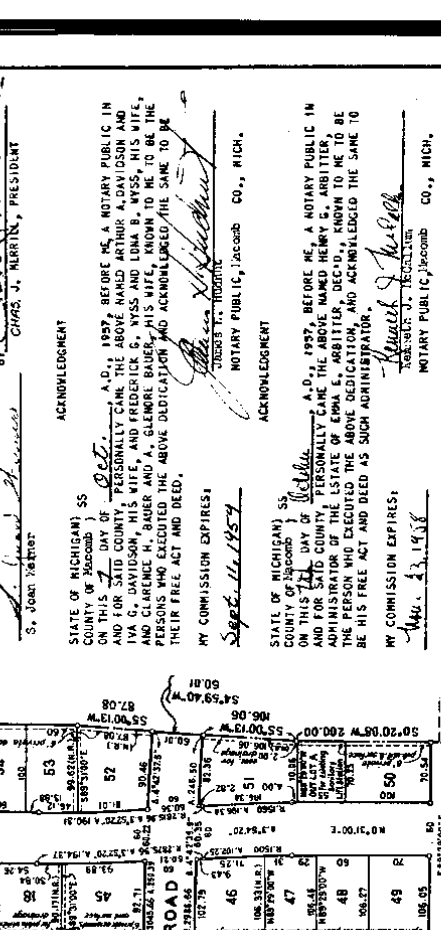
MY COMMISSION EXPIRES:)
Sept. 16, 1957)
NOTARY PUBLIC, Jacob CO., MICH.

STATE OF MICHIGAN)
COUNTY OF MACOMB)
ON THIS DAY OF)
A.D. 1957, BEFORE ME, A NOTARY PUBLIC IN)
AND FOR SAID COUNTY, PERSONALLY CAME THE ABOVE NAMED HENRY C. ARBITTER,)
ADMINISTRATOR OF THE ESTATE OF CHAS. J. MERRILL, DEC'D., KNOWN TO ME TO BE)
THE PERSON WHO EXECUTED THE ABOVE DEED, AND ACKNOWLEDGED THE SAME TO)
BE HIS FREE ACT AND DEED AS SUCH ADMINISTRATOR.

MY COMMISSION EXPIRES:)
Nov. 23, 1958)
NOTARY PUBLIC, Jacob CO., MICH.

STATE OF MICHIGAN)
COUNTY OF MACOMB)
ON THIS DAY OF)
A.D. 1957, BEFORE ME, A NOTARY PUBLIC)
IN AND FOR SAID COUNTY, APPEARED CHAS. J. MERRILL, PERSONALLY)
KNOWN, WHO BEING BY ME DULY SWORN, DID SAY THAT HE IS THE PRESIDENT OF)
GENERAL ENTERPRISES, INC., A MICHIGAN CORPORATION, AND THAT SAID INSTRUMENT)
WAS SIGNED IN BEHALF OF SAID CORPORATION BY AUTHORITY OF ITS BOARD OF)
DIRECTORS, AND THE SAID CHAS. J. MERRILL ACKNOWLEDGED SAID INSTRUMENT TO)
BE THE FREE ACT AND DEED OF SAID CORPORATION.

MY COMMISSION EXPIRES:)
Albert H. Poole)
NOTARY PUBLIC, 177 A CO., MICH.



40

VENETIAN VILLAGE WOODS

A SUB'N. OF PART OF THE N.E. 1/4 OF SEC. 5, T.1 N., R.13 E.,
CITY OF FRASER, MACOMB CO., MICHIGAN.

SHEET 2 OF 2

SCALE: ONE INCH=100 FEET.

HARVEY AND MARSH, Registered Civil Engineer and Land Surveyor, 212 Forewell Bldg., Detroit 26, Mich.

NOTE: All dimensions are shown in feet and decimals thereof. All curvilinear dimensions are shown along the arc. All bearings are given in full on curved or street lines and read in reverse unless otherwise noted as (back).

355635

Supervisor's Plat No. 2 (L.17, P.30)

Supervisor's Plat No. 2 (L.17, P.30)

N. line of Sec. 5

FOURTEEN MILE ROAD

WOODBINE ROAD

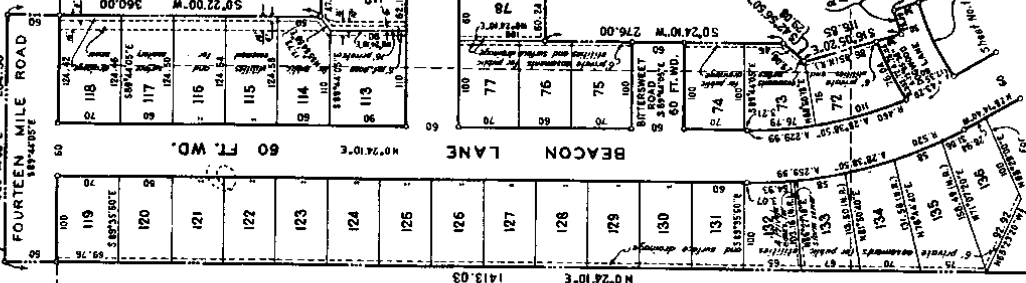
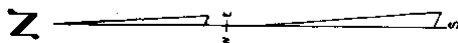
BEACON LANE

KELLY ROAD

City of Fraser

Erin Township

E. line of the City of Fraser & line of Sec 5



REGISTRAR'S OFFICE
COUNTY OF MACOMB

Received for Record

October 11, 1957

at 2:05 P.M. and records

in Volume 46

Page 26

Carroll B. Burt

Registrar of Deeds

CERTIFICATE OF MUNICIPAL APPROVAL

I HEREBY CERTIFY THAT THIS PLAT HAS BEEN APPROVED BY THE CITY COUNCIL OF THE CITY OF FRASER AT A SPECIAL MEETING HELD OCTOBER 11, 1957, AND THAT THE WIDTH OF LOTS IS IN COMPLIANCE WITH REQUIREMENTS OF S.C. 30, ACT 112 OF 1929, AS AMENDED.

R.A.A. & S.A.

AMENDED.



Richard E. Nicolai
RICHARD E. NICOLAI, CITY CLERK

CERTIFICATE OF APPROVAL BY COUNTY BOARD

THIS PLAT WAS APPROVED ON THE 10th DAY OF October, 1957, BY THE MAGDOB COUNTY PLAT BOARD.

Alvin A. Wagner
ALVIN A. WAGNER, COUNTY CLERK

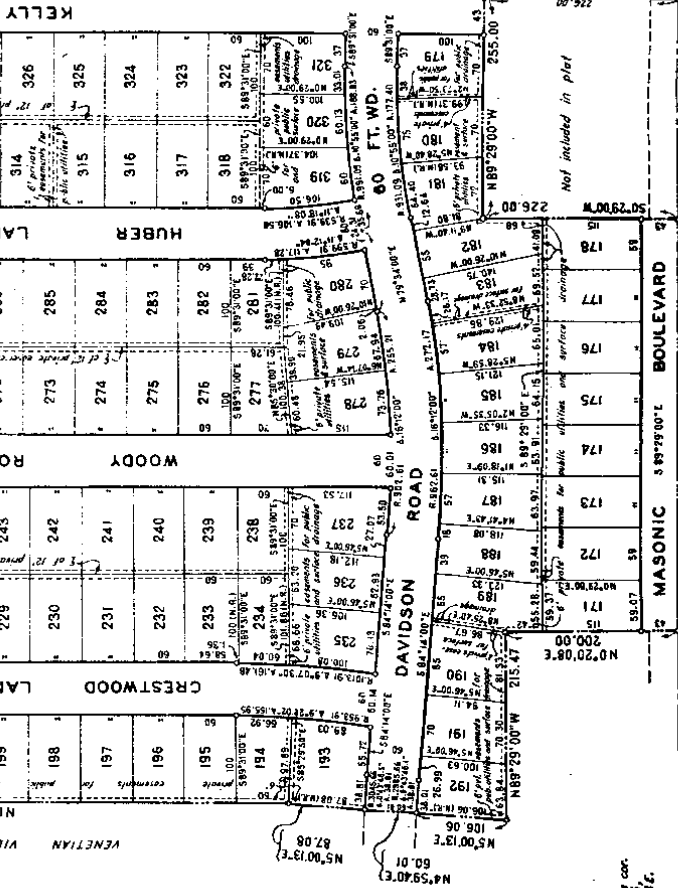
Frank C. Lohr
FRANK C. LOHR, COUNTY DRAIN COMMISSIONER

DESCRIPTION

THE LAND EMBRACED IN THE ANNEXED PLAT OF VENEZUELAN VILLAGE HOUSES, A SUB'N. OF PART OF PLATS NO. 1, 2, 3, 4, 5, 6, 7, 8, 9, 10, 11, 12, 13, 14, 15, 16, 17, 18, 19, 20, 21, 22, 23, 24, 25, 26, 27, 28, 29, 30, 31, 32, 33, 34, 35, 36, 37, 38, 39, 40, 41, 42, 43, 44, 45, 46, 47, 48, 49, 50, 51, 52, 53, 54, 55, 56, 57, 58, 59, 60, 61, 62, 63, 64, 65, 66, 67, 68, 69, 70, 71, 72, 73, 74, 75, 76, 77, 78, 79, 80, 81, 82, 83, 84, 85, 86, 87, 88, 89, 90, 91, 92, 93, 94, 95, 96, 97, 98, 99, 100, 101, 102, 103, 104, 105, 106, 107, 108, 109, 110, 111, 112, 113, 114, 115, 116, 117, 118, 119, 120, 121, 122, 123, 124, 125, 126, 127, 128, 129, 130, 131, 132, 133, 134, 135, 136, 137, 138, 139, 140, 141, 142, 143, 144, 145, 146, 147, 148, 149, 150, 151, 152, 153, 154, 155, 156, 157, 158, 159, 160, 161, 162, 163, 164, 165, 166, 167, 168, 169, 170, 171, 172, 173, 174, 175, 176, 177, 178, 179, 180, 181, 182, 183, 184, 185, 186, 187, 188, 189, 190, 191, 192, 193, 194, 195, 196, 197, 198, 199, 200, 201, 202, 203, 204, 205, 206, 207, 208, 209, 210, 211, 212, 213, 214, 215, 216, 217, 218, 219, 220, 221, 222, 223, 224, 225, 226, 227, 228, 229, 230, 231, 232, 233, 234, 235, 236, 237, 238, 239, 240, 241, 242, 243, 244, 245, 246, 247, 248, 249, 250, 251, 252, 253, 254, 255, 256, 257, 258, 259, 260, 261, 262, 263, 264, 265, 266, 267, 268, 269, 270, 271, 272, 273, 274, 275, 276, 277, 278, 279, 280, 281, 282, 283, 284, 285, 286, 287, 288, 289, 290, 291, 292, 293, 294, 295, 296, 297, 298, 299, 300, 301, 302, 303, 304, 305, 306, 307, 308, 309, 310, 311, 312, 313, 314, 315, 316, 317, 318, 319, 320, 321, 322, 323, 324, 325, 326, 327, 328, 329, 330, 331, 332, 333, 334, 335, 336, 337, 338, 339, 340, 341, 342, 343, 344, 345, 346, 347, 348, 349, 350, 351, 352, 353, 354, 355, 356, 357, 358, 359, 360, 361, 362, 363, 364, 365, 366, 367, 368, 369, 370, 371, 372, 373, 374, 375, 376, 377, 378, 379, 380, 381, 382, 383, 384, 385, 386, 387, 388, 389, 390, 391, 392, 393, 394, 395, 396, 397, 398, 399, 400, 401, 402, 403, 404, 405, 406, 407, 408, 409, 410, 411, 412, 413, 414, 415, 416, 417, 418, 419, 420, 421, 422, 423, 424, 425, 426, 427, 428, 429, 430, 431, 432, 433, 434, 435, 436, 437, 438, 439, 440, 441, 442, 443, 444, 445, 446, 447, 448, 449, 450, 451, 452, 453, 454, 455, 456, 457, 458, 459, 460, 461, 462, 463, 464, 465, 466, 467, 468, 469, 470, 471, 472, 473, 474, 475, 476, 477, 478, 479, 480, 481, 482, 483, 484, 485, 486, 487, 488, 489, 490, 491, 492, 493, 494, 495, 496, 497, 498, 499, 500, 501, 502, 503, 504, 505, 506, 507, 508, 509, 510, 511, 512, 513, 514, 515, 516, 517, 518, 519, 520, 521, 522, 523, 524, 525, 526, 527, 528, 529, 530, 531, 532, 533, 534, 535, 536, 537, 538, 539, 540, 541, 542, 543, 544, 545, 546, 547, 548, 549, 550, 551, 552, 553, 554, 555, 556, 557, 558, 559, 560, 561, 562, 563, 564, 565, 566, 567, 568, 569, 570, 571, 572, 573, 574, 575, 576, 577, 578, 579, 580, 581, 582, 583, 584, 585, 586, 587, 588, 589, 590, 591, 592, 593, 594, 595, 596, 597, 598, 599, 600, 601, 602, 603, 604, 605, 606, 607, 608, 609, 610, 611, 612, 613, 614, 615, 616, 617, 618, 619, 620, 621, 622, 623, 624, 625, 626, 627, 628, 629, 630, 631, 632, 633, 634, 635, 636, 637, 638, 639, 640, 641, 642, 643, 644, 645, 646, 647, 648, 649, 650, 651, 652, 653, 654, 655, 656, 657, 658, 659, 660, 661, 662, 663, 664, 665, 666, 667, 668, 669, 670, 671, 672, 673, 674, 675, 676, 677, 678, 679, 680, 681, 682, 683, 684, 685, 686, 687, 688, 689, 690, 691, 692, 693, 694, 695, 696, 697, 698, 699, 700, 701, 702, 703, 704, 705, 706, 707, 708, 709, 710, 711, 712, 713, 714, 715, 716, 717, 718, 719, 720, 721, 722, 723, 724, 725, 726, 727, 728, 729, 730, 731, 732, 733, 734, 735, 736, 737, 738, 739, 740, 741, 742, 743, 744, 745, 746, 747, 748, 749, 750, 751, 752, 753, 754, 755, 756, 757, 758, 759, 760, 761, 762, 763, 764, 765, 766, 767, 768, 769, 770, 771, 772, 773, 774, 775, 776, 777, 778, 779, 780, 781, 782, 783, 784, 785, 786, 787, 788, 789, 790, 791, 792, 793, 794, 795, 796, 797, 798, 799, 800, 801, 802, 803, 804, 805, 806, 807, 808, 809, 810, 811, 812, 813, 814, 815, 816, 817, 818, 819, 820, 821, 822, 823, 824, 825, 826, 827, 828, 829, 830, 831, 832, 833, 834, 835, 836, 837, 838, 839, 840, 841, 842, 843, 844, 845, 846, 847, 848, 849, 850, 851, 852, 853, 854, 855, 856, 857, 858, 859, 860, 861, 862, 863, 864, 865, 866, 867, 868, 869, 870, 871, 872, 873, 874, 875, 876, 877, 878, 879, 880, 881, 882, 883, 884, 885, 886, 887, 888, 889, 890, 891, 892, 893, 894, 895, 896, 897, 898, 899, 900, 901, 902, 903, 904, 905, 906, 907, 908, 909, 910, 911, 912, 913, 914, 915, 916, 917, 918, 919, 920, 921, 922, 923, 924, 925, 926, 927, 928, 929, 930, 931, 932, 933, 934, 935, 936, 937, 938, 939, 940, 941, 942, 943, 944, 945, 946, 947, 948, 949, 950, 951, 952, 953, 954, 955, 956, 957, 958, 959, 960, 961, 962, 963, 964, 965, 966, 967, 968, 969, 970, 971, 972, 973, 974, 975, 976, 977, 978, 979, 980, 981, 982, 983, 984, 985, 986, 987, 988, 989, 990, 991, 992, 993, 994, 995, 996, 997, 998, 999, 1000.

110 P.C.

VENETIAN VILLAGE COURTS



L46 P50

Center 1/4 cor. of Sec. 5, T. 1 N., R. 13 E.

POINT OF BEGINNING

Center 1/4 cor. of Sec. 5, T. 1 N., R. 13 E.

80 FT. WD.

Not included in plat

L46 P50

CERTIFICATES OF MUNICIPAL APPROVAL

I HEREBY CERTIFY THAT THIS PLAT HAS BEEN APPROVED BY THE CITY COUNCIL OF THE CITY OF FRASER AT A 3:27:00 P.M. MEETING, HELD April 29, 1960, AND THAT THE WIDTH OF LOTS IS IN COMPLIANCE WITH REQUIREMENTS OF SEC. 30, ACT 172 OF 1929, AS AMENDED.

Richard E. Nicolai
RICHARD E. NICOLAI, CITY CLERK

I HEREBY CERTIFY THAT PUBLIC SEWERAGE AND WATER FACILITIES ARE INSTALLED AND READY FOR CONNECTION WITHIN THIS PLAT, AS OF 1960, OR ADEQUATE SECURITY HAS BEEN PLACED IN ESCROW THEREFORE.

Richard E. Nicolai
RICHARD E. NICOLAI, CITY CLERK

CERTIFICATE OF APPROVAL BY COUNTY BOARD

THIS PLAT WAS APPROVED ON THE 20th DAY OF April, 1960, BY THE MACOMB COUNTY BOARD.

Albert A. Wagner
ALBERT A. WAGNER, COUNTY CLERK

REGISTERS OFFICE
COUNTY OF MACOMB

Recorded for Record
April 29, 1960
in Vol. 466 of Deeds on Page 50 of 51.

THIS IS TO CERTIFY THAT THE COUNTY TREASURER'S RECORDS REFLECT THAT THE TAXES DUE ON THIS INSTRUMENT ARE PAID FOR THE YEARS FROM 1959 TO 1960 IN FULL. THE CERTIFICATION DOES NOT INCLUDE CURRENT TAXES NOW BEING COLLECTED.

STATE OF MICHIGAN
COUNTY OF Macomb
ON THIS 24 DAY OF January, A.D., 1960, BEFORE ME, A NOTARY PUBLIC IN AND FOR SAID COUNTY, PERSONALLY CAME THE ABOVE NAMED JOHN B. HUBER AND PETROMILLA MERRILL, BOTH OF WHOM I KNOW, AND THEY EXECUTED THE ABOVE DEDICATION AND ACKNOWLEDGED THE SAME TO BE THEIR FREE ACT AND DEED.

Albert A. Wagner
NOTARY PUBLIC, Macomb Co., MICH.

ACKNOWLEDGMENT

STATE OF MICHIGAN
COUNTY OF Macomb
ON THIS 24 DAY OF January, A.D., 1960, BEFORE ME, A NOTARY PUBLIC IN AND FOR SAID COUNTY, PERSONALLY CAME THE ABOVE NAMED JOHN B. HUBER AND PETROMILLA MERRILL, BOTH OF WHOM I KNOW, AND THEY EXECUTED THE ABOVE DEDICATION AND ACKNOWLEDGED THE SAME TO BE THEIR FREE ACT AND DEED.

Albert A. Wagner
NOTARY PUBLIC, Macomb Co., MICH.

ACKNOWLEDGMENT

STATE OF MICHIGAN
COUNTY OF Macomb
ON THIS 24 DAY OF January, A.D., 1960, BEFORE ME, A NOTARY PUBLIC IN AND FOR SAID COUNTY, PERSONALLY CAME THE ABOVE NAMED JOHN B. HUBER AND PETROMILLA MERRILL, BOTH OF WHOM I KNOW, AND THEY EXECUTED THE ABOVE DEDICATION AND ACKNOWLEDGED THE SAME TO BE THEIR FREE ACT AND DEED.

Albert A. Wagner
NOTARY PUBLIC, Macomb Co., MICH.

BY COMMISSION EXPIRES:

May 13, 1962

L46 P51

L46 P51

See Amendment to Restrictive Covenants 1081 Page 116 See Amendment to Restrictive Covenants
 See Protective Covenants 110 & 5 pages 137 & 138

VENETIAN VILLAGE SUBDIVISION, PART OF THE S.E. 1/4 OF SEC. 5, T.1 N., R.13 E., ERIN TOWNSHIP, MACOMB COUNTY, MICHIGAN.

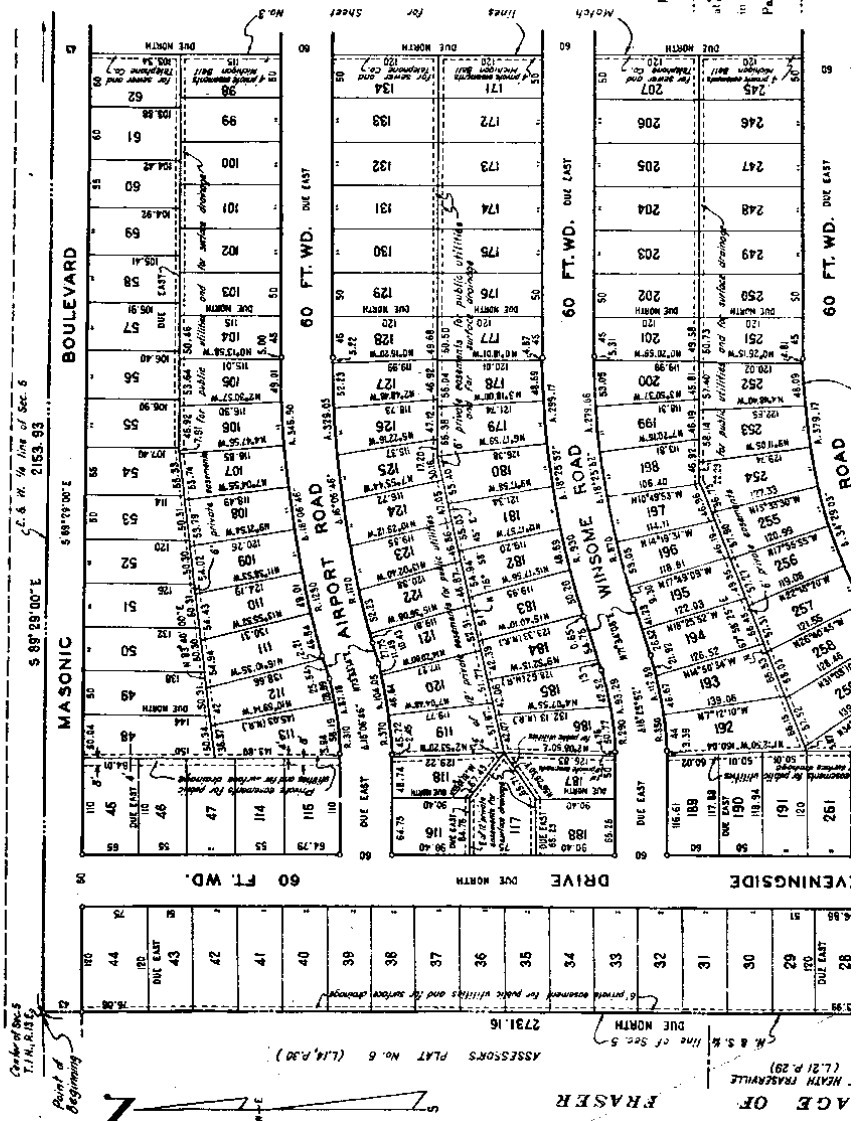
SHEET ONE
 OF
 FOUR SHEETS

EXAMINED AND APPROVED
 D. to JUL 2 1958

FRANK S. SZYMANSKI
 Registered Civil Engineer
 228 Forest Bluffs
 DETROIT 26, MICH.
 City Engineer

WARNER AND WARNER,
 Registered Civil Engineers
 and Land Surveyors,
 228 Forest Bluffs,
 DETROIT 26, MICH.

NOTE: All dimensions are shown in feet and decimals thereof.
 All civil engineer dimensions are shown along the arc.
 All surveying and boundary lines are
 model threads unless otherwise noted on (N.B.).



REGISTER'S OFFICE
 COUNTY OF MACOMB
 Received for Record
 July 16, 1958
 at 1:50 P.M. in Vol. 17
 Page 100-101
 Registrar of Deeds

See Restrictive Covenants 1114 page 525 See Restrictive Covenants 1118 page 510
 112 340 of map

VENETIAN VILLAGE SUBDIVISION,

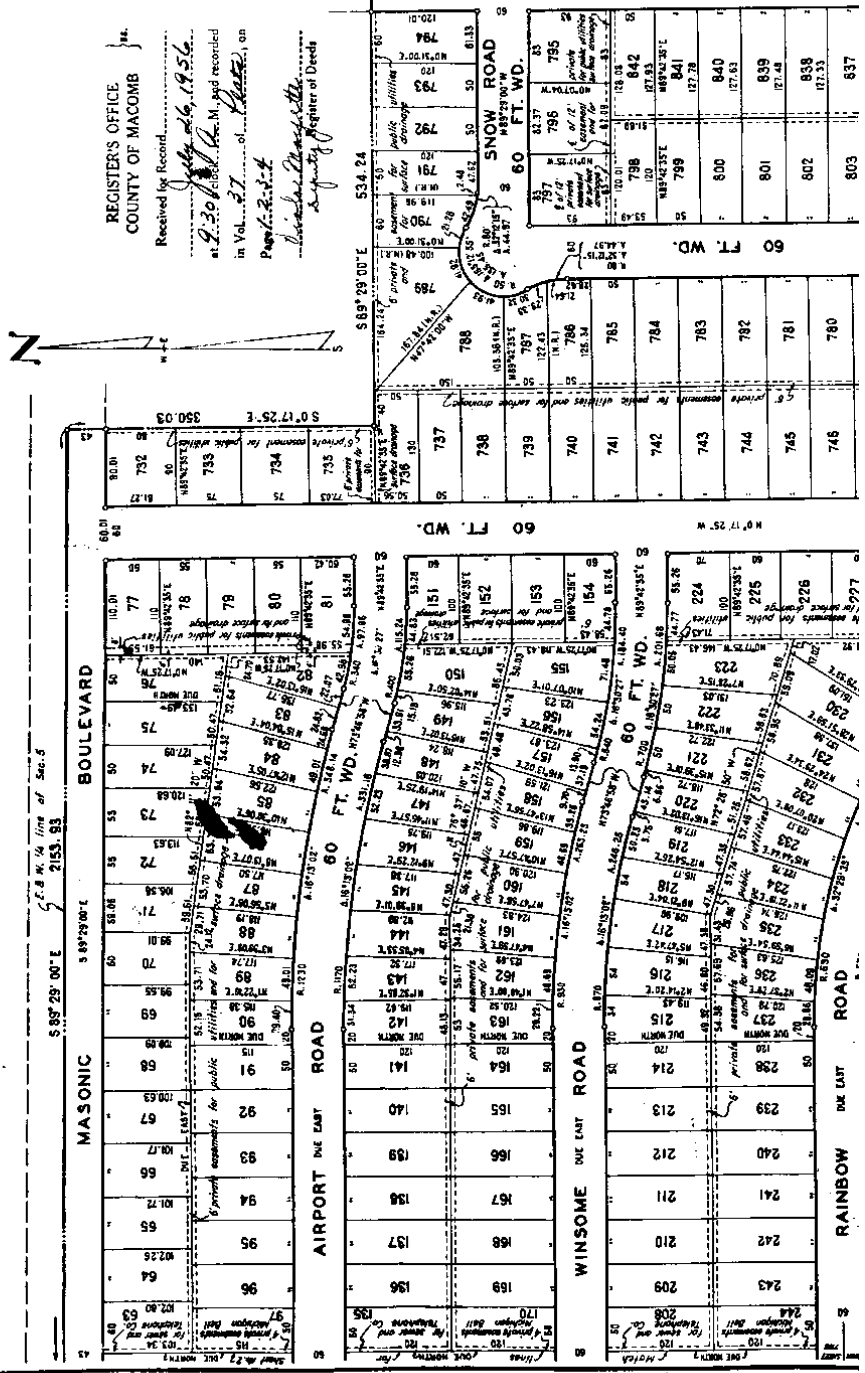
PART OF THE S.E. 1/4 OF SEC. 5, T.11 N., R.13 E.,
ERIN TOWNSHIP, MACOMB COUNTY, MICHIGAN.

SHEET TWO
OF
FOUR SHEETS

MAPPER AND MARKER,
Professional Civil Engineer,
and Land Surveyor,
528 Forward Bldg.,
LANSING, MICH.

NOTE: All dimensions are shown in feet and decimals thereof.
All curvilinear dimensions are shown along the arc.
All side lines of lots fronting on curvilinear street lines are
radial thereto unless otherwise noted as (N.R.).

230618



REGISTRAR'S OFFICE
COUNTY OF MACOMB }
Received for Record
at 9:30 A.M. on 12/19/56
in Vol. 27 of _____
Page 230618
Lester P. ...
County Registrar of Deeds

PLAT MAPS SUBD. NO. 2 (L.S.P. 9) F.A. HALL'S (GARY) PLANS M.I.L.P. 23

1000.94

SHEET THREE
OF
FOUR SHEETS

**PART OF THE S.E. 1/4 OF SEC. 5, T.1N., R.13 E.,
ERIN TOWNSHIP, MACOMB COUNTY, MICHIGAN.**

SCALE--ONE INCH=100 FEET.

NOTE: All dimensions are shown in feet and decimals thereof.
All curvilinear dimensions are shown along the arc.
All line lines of lots fronting on curvilinear street lines are
measured thereon unless otherwise noted on (N.A.).

WARNER AND WARNER,
Registered Civil Engineers
222 Commercial Street
DETROIT 26, MICH.

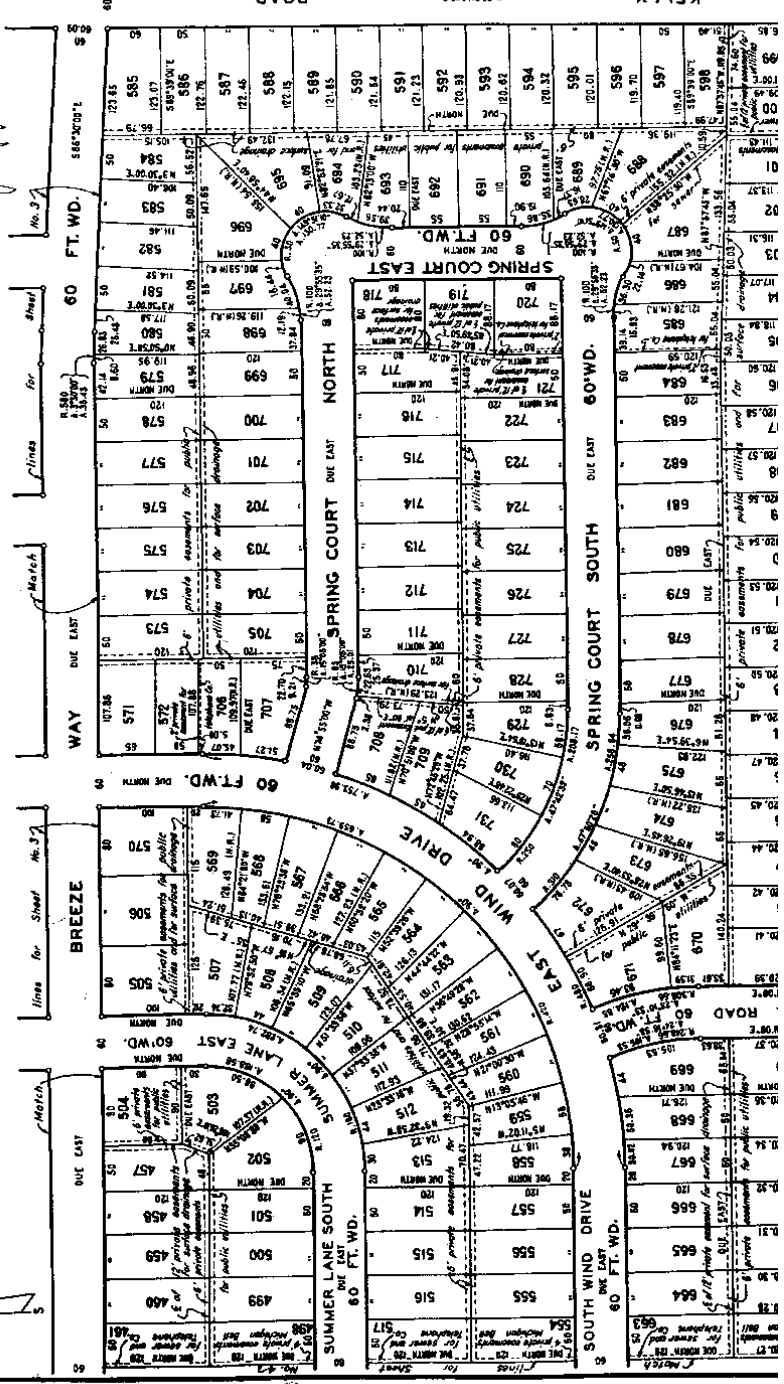
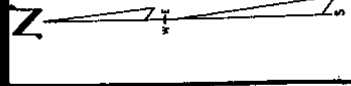
REGISTERS OFFICE
COUNTY OF MACOMB

Received for Record
July 26, 1956

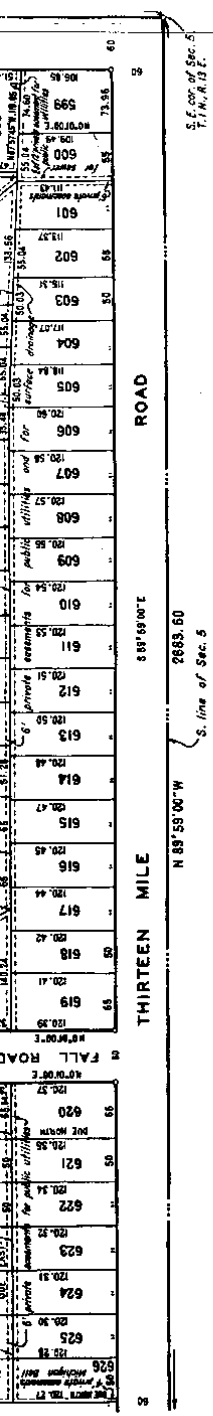
at 9:28 o'clock P.M. and recorded
in Vol. 37 of Plats, on
Page 2-3-4

2966919

Richard D. Thayer
Register of Deeds



W 21.00' E
S 0' 21.00' W
1356.75
E line of Sec. 5



EXAMINED AND APPROVED
 Date JUL 25 1956
 By Paul J. Szymanski
 SURVEYOR GENERAL
 Paul J. Szymanski
 Surveyor

SURVEYOR'S CERTIFICATE
 I HEREBY CERTIFY THAT THE PLAT HEREON DELINEATED IS A CORRECT ONE, AND THAT PERMANENT MONUMENTS CONSISTING OF IRON RODS ONE HALF INCH IN DIAMETER AND 36 INCHES IN LENGTH, ENCASED IN CONCRETE CYLINDERS 4 INCHES IN DIAMETER AND 36 INCHES IN LENGTH, HAVE BEEN PLACED AT ALL POINTS MARKED THIS (O) AS THEREON SHOWN AT ALL ANGLES IN THE BOUNDARIES OF THE LAND PLATTED, AT ALL INTERSECTIONS OF THE LINES OF STREETS, AND AT INTERSECTIONS OF THE LINES OF STREETS WITH THE BOUNDARIES OF THE PLAT.

John K. Carls
 JOHN K. CARLS
 - CLERK

Burton Warner
 BURTON WARNER, Reg. Land Surveyor

CERTIFICATE OF APPROVAL BY COUNTY BOARD
 THIS PLAT WAS APPROVED ON THE 24th DAY OF July, 1956, BY THE
Albert A. Warner
 ALBERT A. WARNER, COUNTY CLERK

Ernest W. Calloway
 ERNEST W. CALLOWAY, COUNTY TREASURER

Frank L. Emery
 FRANK L. EMERY, COUNTY DRAIN COMMISSIONER

CERTIFICATES OF MUNICIPAL APPROVAL

I HEREBY CERTIFY THAT THIS PLAT HAS BEEN APPROVED BY THE TOWNSHIP BOARD OF THE TOWNSHIP OF LEVIN AT A Special MEETING HELD July 25 1956, AND THAT THE WIDTH OF LOTS IS IN COMPLIANCE WITH REQUIREMENTS OF SEC. 30, ACT 172 OF 1929, AS AMENDED.

I HEREBY CERTIFY THAT PUBLIC SEWERAGE AND WASTE FACILITIES ARE INSTALLED AND READY FOR CONNECTION WITHIN THIS PLAT, AS OF July 25 1956, 1956.

John K. Carls
 JOHN K. CARLS
 - CLERK

DESCRIPTION

THE LAND EMBRACED IN THE AMENDED PLAT OF VENETIAN VILLAGE SUBDIVISION, PART OF THE S.E. 1/4 OF SEC. 5, T. 1 N., R. 12 E., IS FURTHER DESCRIBED AS FOLLOWS: TO BEYOND THE POINT OF BEGINNING OF SAID SECTION 5, AND PROCEEDING THENCE ALONG THE E. & N. 1/4 LINE OF SAID SECTION 5, 899.28' TO A POINT ON THE E. LINE OF SAID SECTION 5, 310.03'; THENCE S. 89° 28' 00" E. 534.24' TO A POINT ON THE E. LINE OF SAID SECTION 5; THENCE ALONG SAID LINE S. 0° 07' 04" E. 1000.94', AND S. 0° 21' 00" W. 1306.75' TO THE S.E. CORNER OF SAID SECTION 5; THENCE ALONG THE S. LINE OF SAID SECTION 5, N. 89° 59' 00" W., 2682.60' TO THE S. 1/4 CORNER OF SAID SECTION 5; THENCE ALONG THE N. AND S. 1/4 LINE OF SAID SECTION 5, ONE NORTH, 2731.16' TO THE POINT OF BEGINNING.

CERTIFICATE OF APPROVAL, BY
 RES. OF COUNTY ROAD COMMISSIONERS
 This plat has been examined and approved on
 this 24th day of July, 1956,
 by the Board of County Road Commissioners
 of Muskegon County.
Ernest W. Calloway
 ERNEST W. CALLOWAY, Chairman
Roy Onda
 ROY ONDA, Vice-Chairman
Albert A. Warner
 ALBERT A. WARNER, Secretary

VENETIAN VILLAGE SUBDIVISION,

PART OF THE S.E. 1/4 OF SEC. 5, T.1 N., R.13 E.,
ERIN TOWNSHIP, MACOMB COUNTY, MICHIGAN.

SHEET FOUR
OF
FOUR SHEETS

REGISTRAR'S OFFICE
COUNTY OF MACOMB

Received for Record
July 26, 1956
at 10:40 A.M. and recorded
in Vol. 37 of
Plat. 2-3-4
of the
Register of Deeds

HARLES AND WALTER
Registered Civil Engineers
and Land Surveyors
228 Tower Bldg.
DETROIT 26, MICH.

296018

SCALE--ONE INCH=100 FEET.

NOTE: All dimensions are shown in feet and decimals thereof.
All curvilinear dimensions are shown along the arc.
All side lines of lots fronting on curvilinear street lines are
radial thereto unless otherwise noted as (N.C.).

Match lines for Sheet No. 3

60 FT. WD.	27	26	25	24	23	22	21	20	19	18	17	16	15	14	13	12	11	10	9	8	7	6	5	4	3	2	1
------------	----	----	----	----	----	----	----	----	----	----	----	----	----	----	----	----	----	----	---	---	---	---	---	---	---	---	---

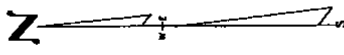
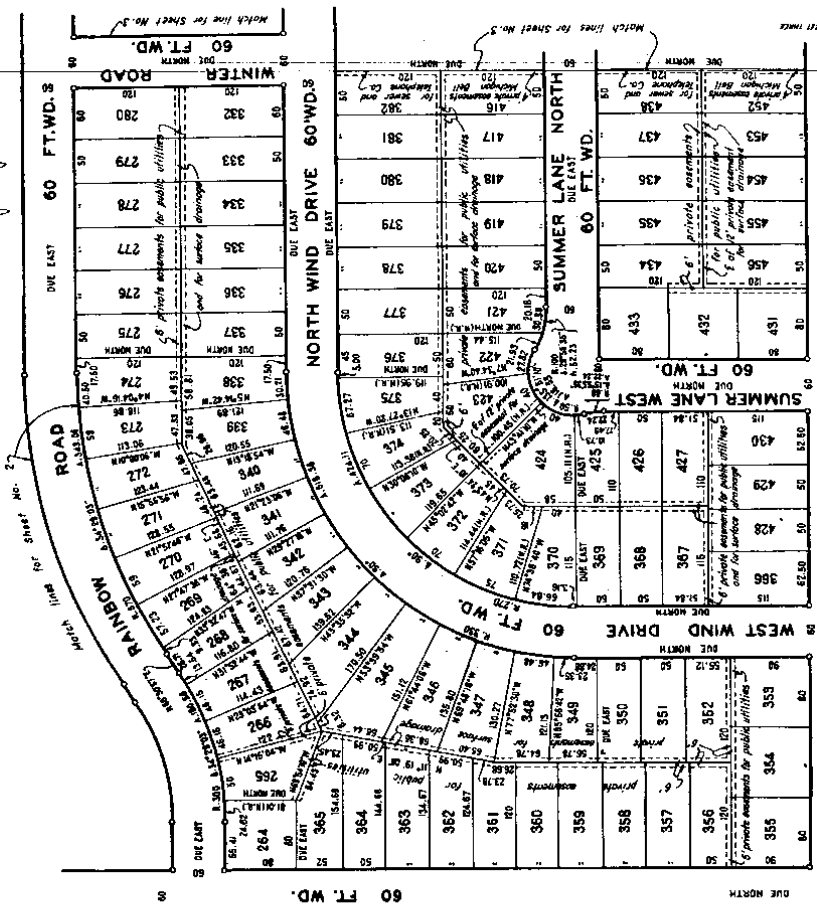
Match lines for Sheet No. 2

ASSASSOR'S PLAT OF HEATH FRASERVILLE LITTLE FARMS SUB. (L.P. 219)

FRASER

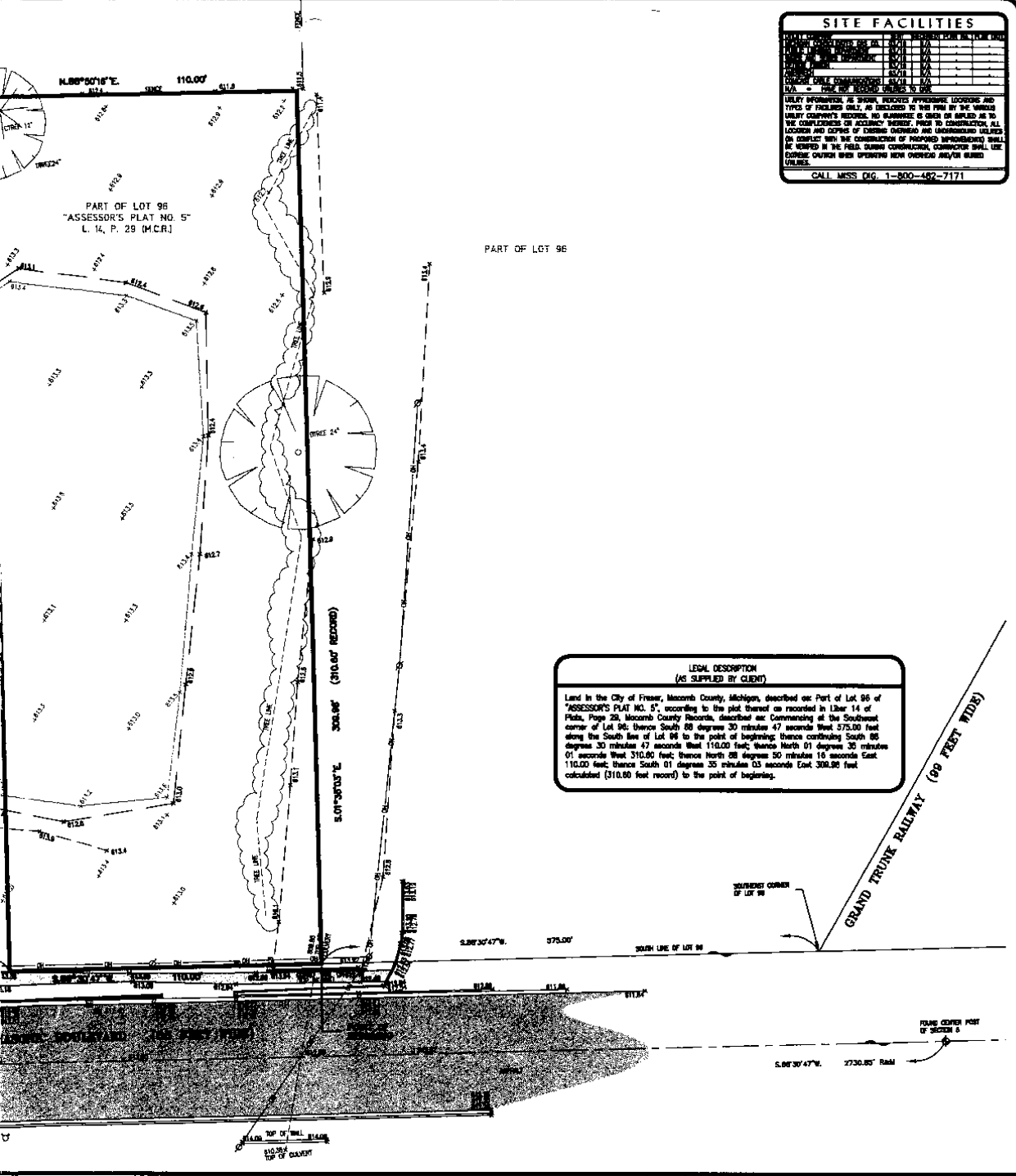
N. & S. 1/4 line of Sec. 5

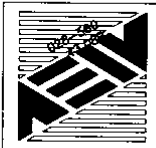
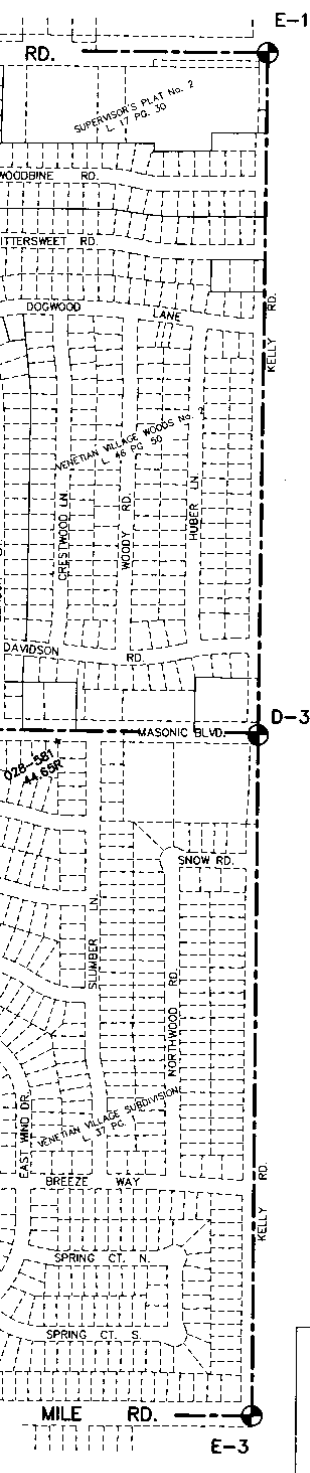
2731.16



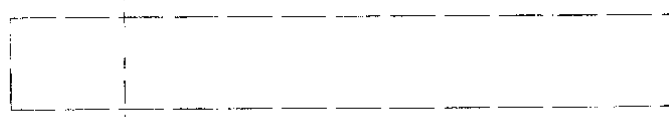
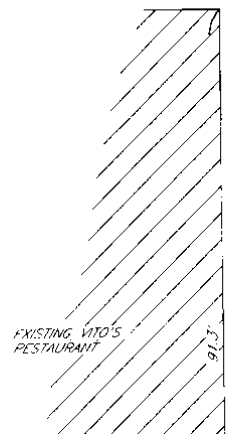
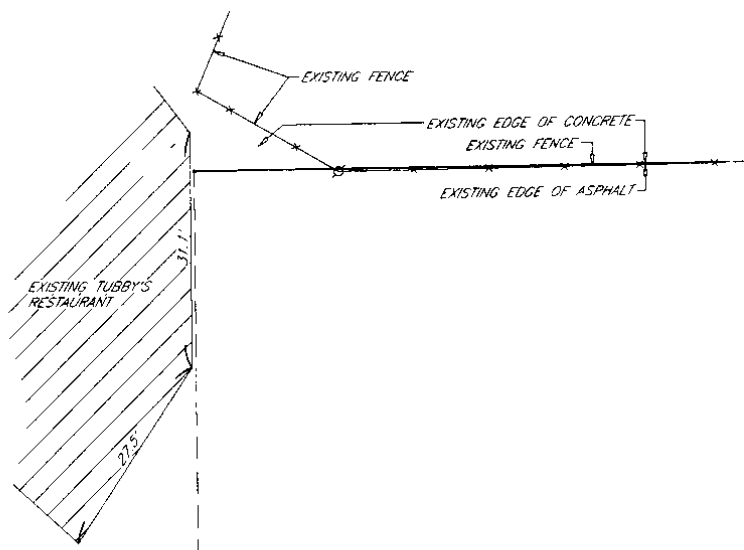
SITE FACILITIES	
NO. 1	NO. 2
NO. 3	NO. 4
NO. 5	NO. 6
NO. 7	NO. 8
NO. 9	NO. 10
NO. 11	NO. 12
NO. 13	NO. 14
NO. 15	NO. 16
NO. 17	NO. 18
NO. 19	NO. 20
NO. 21	NO. 22
NO. 23	NO. 24
NO. 25	NO. 26
NO. 27	NO. 28
NO. 29	NO. 30
NO. 31	NO. 32
NO. 33	NO. 34
NO. 35	NO. 36
NO. 37	NO. 38
NO. 39	NO. 40
NO. 41	NO. 42
NO. 43	NO. 44
NO. 45	NO. 46
NO. 47	NO. 48
NO. 49	NO. 50
NO. 51	NO. 52
NO. 53	NO. 54
NO. 55	NO. 56
NO. 57	NO. 58
NO. 59	NO. 60
NO. 61	NO. 62
NO. 63	NO. 64
NO. 65	NO. 66
NO. 67	NO. 68
NO. 69	NO. 70
NO. 71	NO. 72
NO. 73	NO. 74
NO. 75	NO. 76
NO. 77	NO. 78
NO. 79	NO. 80
NO. 81	NO. 82
NO. 83	NO. 84
NO. 85	NO. 86
NO. 87	NO. 88
NO. 89	NO. 90
NO. 91	NO. 92
NO. 93	NO. 94
NO. 95	NO. 96
NO. 97	NO. 98
NO. 99	NO. 100

FIELD INSTRUMENTS AS SHOWN INCLUDE: REFLECTOR, LEVELING RODS AND TYPES OF FACILITIES ONLY, AS DISCLOSED TO THE FIRM BY THE SURVEYOR. COMPANY'S RECORDS, NO GUARANTEE IS GIVEN BY SURVEYOR AS TO THE COMPLETENESS OR ACCURACY HEREOF. PRIOR TO CONSTRUCTION, ALL LOCATIONS AND DEPTHS OF EXISTING DEPRESSIONS AND UNDERGROUND UTILITIES IN EXISTENCE WITH THE CONSTRUCTION OF PROPOSED IMPROVEMENTS SHALL BE VERIFIED IN THE FIELD. DURING CONSTRUCTION, CONSTRUCTION SHALL BE STOPPED IMMEDIATELY UPON DISCOVERY OF ANY SUCH UTILITIES. EXISTING UTILITIES SHALL BE PROTECTED AND MAINTAINED THROUGHOUT THE PROJECT. CALL MISS. DIG. 1-800-452-7171





ANDERSON, ECKSTEIN AND WESTRICK, INC.
 Civil Engineers • Surveyors • Architects
 51301 Schoenherr Road, Shelby Township, Michigan 48315
 Phone 586•726•1234 Fax 586•726•8780



I. & S. 1/4 LINE SECTION 5

310 ERP

EXISTING VITO'S RESTAURANT

91.3'

N. & S. 1/4 LINE SECTION 5

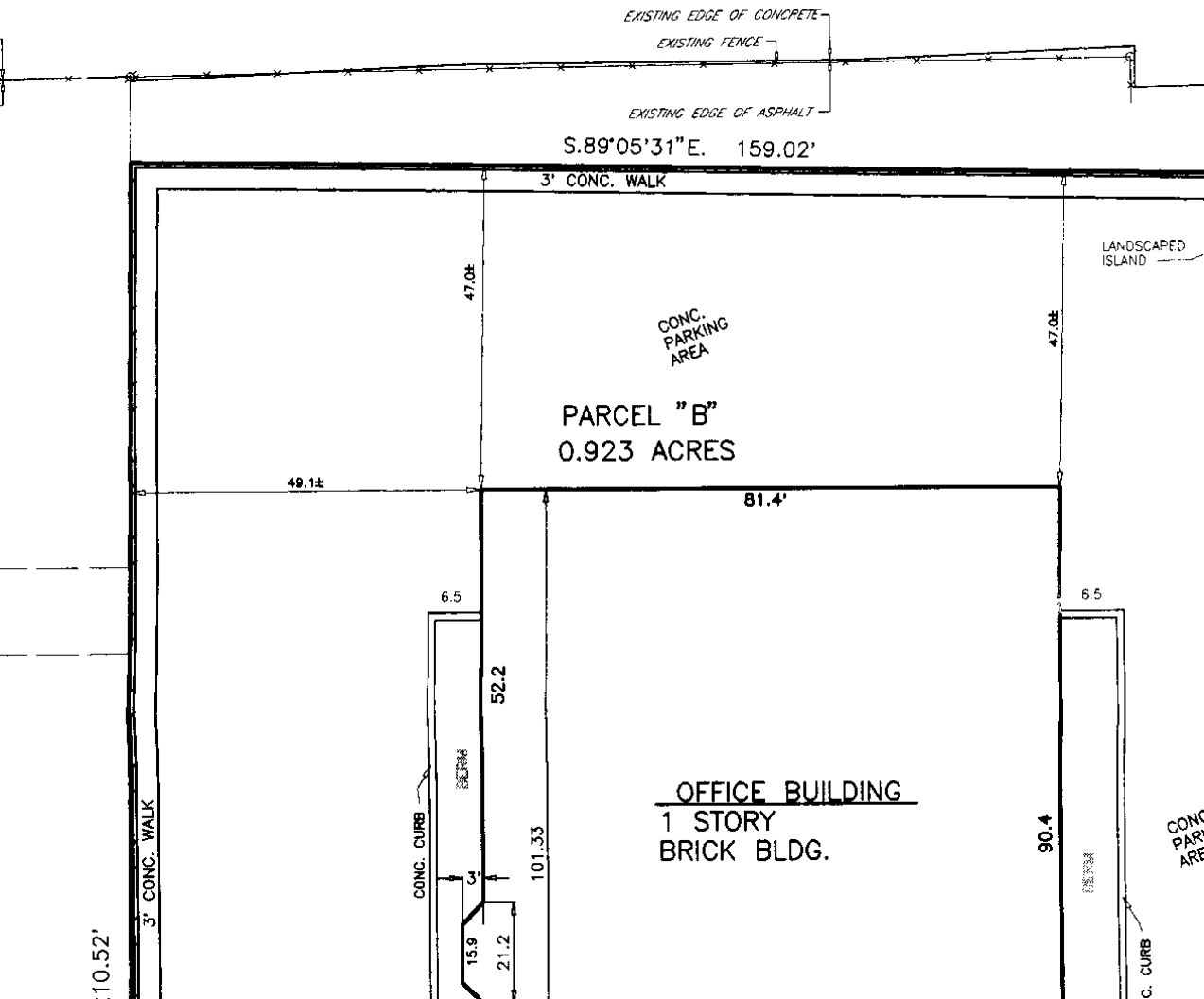
P.O.B. OF PARCE

EXISTING EDGE

DUE EAST 75.81'

CENTER OF SECTION 5, T.1N., R.13E., FOUND BOAT SPIKE RECOVERED FROM WITNESS RECORDED IN LIBER 3551, PAGE 380.

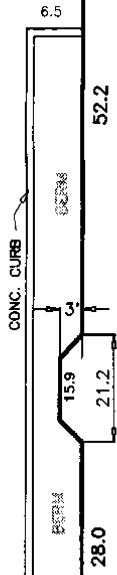
MORTGAGE REPORT



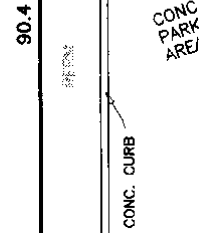
N.00°08'21"E. 210.52'

3' CONC. WALK

CONC. PARKING AREA



OFFICE BUILDING
1 STORY
BRICK BLDG.



71.8'

5' CONCRETE SIDEWALK

EXISTING LAWN

DUE WEST 159.00'

EXISTING LANDSCAPING

EXISTING 5' SIDEWALK

CEL "B"

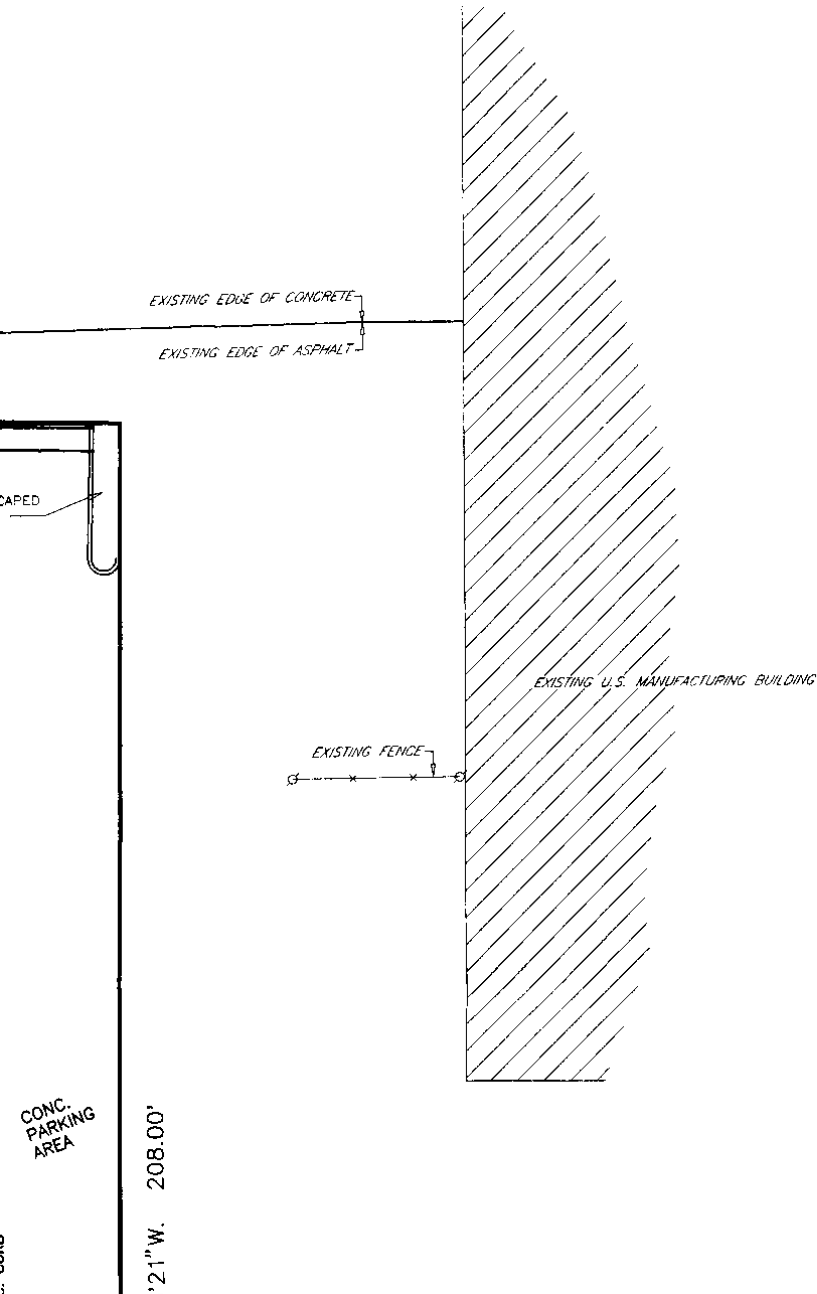
EDGE OF ASPHALT

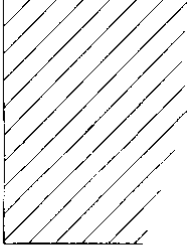
N.00°08'21"E.
43.00'

MASONIC BLVD. 86' WIDE

EAST & WEST 1/4 LINE

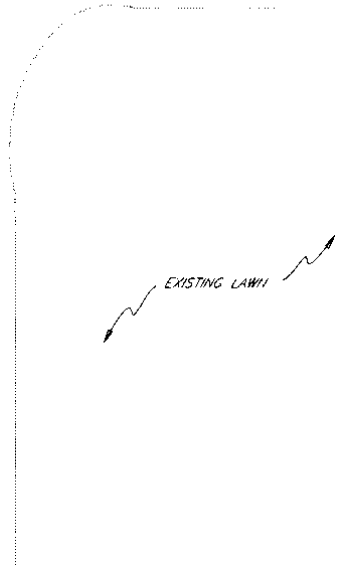
T





CONC.
PARKING
AREA

S.00°08'21"W. 208.00'



20.7

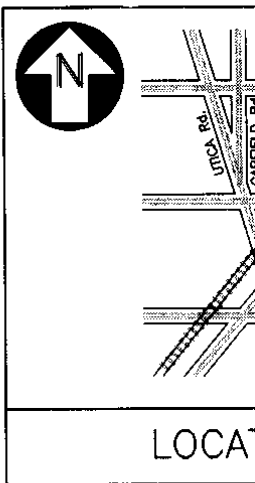
CERTIFIED TO: MICHIGAN NATIONAL BANK
27777 INKSTER RD.
FARMINGTON HILLS, MI

CERTIFIED TO: METROPOLITAN TITLE COMPANY
1400 N. WOODWARD, SU
BLOOMFIELD HILLS, MI
ATTN: TOM DELANEY

CERTIFIED TO: FIRST AMERICAN TITLE INSURANCE

APPLICANTS: JOSEPH A. SIMON SR. T
17717 MASONIC
FRASER, MICHIGAN

N



PARCEL "B"

A part of the Northeast 1/4 of Section 5, Town 1 North, Range 13 East, City of Fraser, Macomb County, Michigan, and being more particularly described as follows: Beginning at a point on the North rights-of-way of Masonic Road said point being distant 75.81 feet Due East along the East and West 1/4 Line of said Section 5 and 43.00 feet N.00°08'21"E. from the center post of said Section 5; thence continuing N.00°08'21"E. 210.52 feet; thence S.89°05'31"E. 159.02 feet; thence S.00°08'21"W. 208.00 feet to a point on said rights-of-way line; thence Due West 159.00 feet along said rights-of-way to the point of beginning. Subject to all rights-of-ways and/or easements recorded or otherwise.

A part of the Northeast 1/4 of Section 5, Town 1 North, Range 13 East, City of Fraser, Macomb County, Michigan, and being more particularly described as follows: Beginning at a point on the North rights-of-way of Masonic Road said point being distant 75.81 feet Due East along the East and West 1/4 Line of said Section 5 and 43.00 feet N.00°08'21"E. from the center post of said Section 5; thence continuing N.00°08'21"E. 210.52 feet; thence S.89°05'31"E. 159.02 feet; thence S.00°08'21"W. 208.00 feet to a point on said rights-of-way line; thence Due West 159.00 feet along said rights-of-way to the point of beginning. Subject to all rights-of-ways and/or easements recorded or otherwise.

NATIONAL BANK
TER RD.
HILLS, MI 48333

N TITLE COMPANY
ODWARD, SUITE 135
HILLS, MI 48304
DELANEY

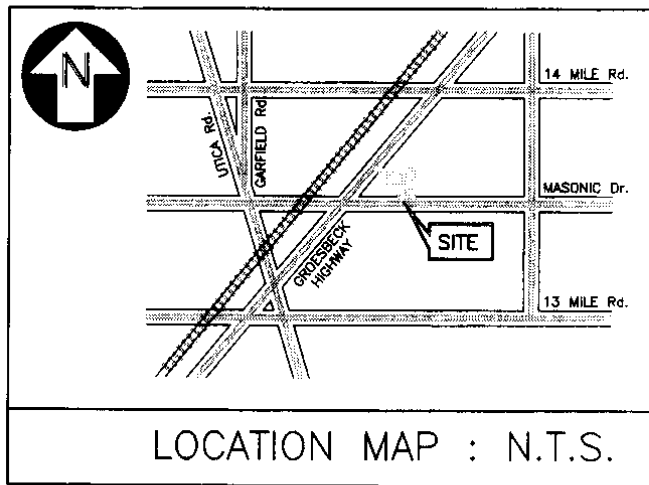
CAN TITLE INSURANCE CO.

SIMON SR. TRUST
ONIC
HIGAN

I HEREBY CERTIFY that this report shows the improvement(s) as located on the premises described. That the improvement(s) are entirely within the lot (property) lines, and that there are no encroachments upon the premises described, except as noted.

This report is not intended or represented to be a land or property line survey. This report is not to be used for the establishment of any property lines or other improvement(s). Photographs of improvement(s) are attached to this report.

John R. Fenn R.L.S. 23505



LOCATION MAP : N.T.S.

PARCEL "B"

A part of the Northeast 1/4 of Section 5, Town 1 North, Range 13 East, City of Fraser, Macomb County, Michigan, and being more particularly described as follows: Beginning at a point on the North rights-of-way of Masonic Road said point being distant 75.81 feet Due East along the East and West 1/4 Line of said Section 5 and 43.00 feet N.00°08'21"E. from the center post of said Section 5; thence continuing N.00°08'21"E. 210.52 feet; thence S.89°05'31"E. 159.02 feet; thence S.00°08'21"W. 208.00 feet to a point on said rights-of-way line; thence Due West 159.00 feet along said rights-of-way to the point of beginning. Subject to all rights-of-ways and/or easements recorded or otherwise.

A part of the Northeast 1/4 of Section 5, Town 1 North, Range 13 East, City of Fraser, Macomb County, Michigan, and being more particularly described as follows: Beginning at a point on the North rights-of-way of Masonic Road said point being distant 75.81 feet Due East along the East and West 1/4 Line of said Section 5 and 43.00 feet N.00°08'21"E. from the center post of said Section 5; thence continuing N.00°08'21"E. 210.52 feet; thence S.89°05'31"E. 159.02 feet; thence S.00°08'21"W. 208.00 feet to a point on said rights-of-way line; thence Due West 159.00 feet along said rights-of-way to the point of beginning. Subject to all rights-of-ways and/or easements recorded or otherwise.

I HEREBY CERTIFY that this report shows the improvement(s) as located on the premises described. That the improvement(s) are entirely within the lot (property) lines, and that there are no encroachments upon the premises described, except as noted.

This report is not intended or represented to be a land or property line survey. This report is not to be used for the establishment of any property lines or other improvement(s). Photographs of improvement(s) are attached to this report.

John R. Fenn R.L.S. 23505

Fenn & Associates Inc.

42802 Mound Road
Sterling Heights, Michigan 48314
PHONE: (313) 254-9577

SCALE: 1" = 20'

DATE: 02/23/95

DRAWING NUMBER: 95-355

DRAWN BY:

Scott Fisher

D-2
REDUCE TO
11" x 17"