

C152283

94 DEC 14 AM 10:55

LAND CORNER RECORDATION CERTIFICATE
Filing Requirement of Act 74, Mich. P.A. 1970

corners in

MACOMB

(County)

Located In: ERIN/LAKE

Corner Code #

Public Land Survey

T 1N R 13E

D-1

Property Controlling in Section

S T R

Miscellaneous

S T R

Property in Sec.

S T R

CASH REGISTER RECORDS
MACOMB COUNTY, MI

LIBER 6527 PAGE 860

Register of Deeds Stamp & File Number

Lot No. Recorded Plat Private Claims

Grid table with columns A-L and rows 2-13. A dot is marked at the intersection of column D and row 2.

STEVEN E. DUNN, in a field survey on MARCH 20, 19 94, hereby certify that under requirements of P.A. 74, Michigan P.A. of 1970, the corner points mentioned in lines 1 and 2 above were in conformance with regulations and rules therefore required in the current manual of survey instructions of the United States Department of Interior, Bureau of Land Management or by a decree of a Court of Law and for that the corner points mentioned in lines 3, 4 and 5 above were in conformance with the rules of the Michigan Board of Land Surveyors or by a Decree of a Court of Law; established, established, monumented, re-monumented, recovered, found as expressed below:

NOTE: Not more than 4 corners, all in the same town and range, may be recorded on this certificate.

Description of original monument and accessories and/or subsequent restoration:

GLO POST - NO EVIDENCE OF ORIGINAL CORNER FOUND
GLO ORIGINAL SURVEY PERFORMED BY PRESTON 2-18-1818

Table with columns: L.C.R.C. D-13, T.2N., R.13E., NAME AND NUMBER, DESCRIPTION, DATE. Includes entries for William J. Coulter, George J. Avendt, Jr., and Raymond J. Donnelly.

Table with columns: PLATS, L. P., DESCRIPTION, DATE. Includes entries for Garfield Park Subdivision No. 1, Assessor's Plat No. 4, and Supervisor's Plat No. 2.

Description of corner evidence found and/or method applied in restoring or reestablishing corner:

D-1 1/4 CORNER COMMON TO D-13 CLINTON TOWNSHIP

FOUND 1/2" IRON PIPE IN MONUMENT BOX IN CONCRETE PAVEMENT
VERIFIED LOCATION BY COMPARING FOUND WITNESSES OF L.C.R.C.'s LISTED BELOW AND COMPARING DISTANCE FROM D-1 TO E-1 AS SHOWN ON SUPERVISOR'S PLAT NO. 2 AND MDOT R/W MAP SHEET NO. 79 AND DISTANCE FROM D-1 TO C-1 AS SHOWN ON ASSESSOR'S PLAT NO. 4 AND GARFIELD PARK SUB. NO.

Table with columns: FOUND WITNESS TIES, L. P., BEARING, DISTANCE, DESCRIPTION. Includes entries for ENE 125.90' PK. NAIL and MAG AZ. 334° 37.58' PK. NAIL.

FIELD MEASUREMENTS AND RECORDED DISTANCES

D-1 TO C-1 = 2713.74' (M.) 2640.00' G.L.O. (R.)
D-1 TO E-1 = 2703.12' (M.) 2640.00' G.L.O. (R.)

Description of monument for corner and accessories established to perpetuate locating the position of the corner:

D-1 T.1N., R.13E. I REPLACED 1/2" IRON ROD WITH A 3/4" x 24" IRON ROD WITH 2" DIAMETER ALUMINUM CAP STAMPED "MACOMB COUNTY MONUMENT MI. ACT 345 #28408" IN AN EXISTING MONUMENT BOX.

WITNESSES

- N.21°W. 37.50' FOUND PK NAIL IN EAST FACE OF UTILITY POLE.
N.03E. 56.73' FOUND PK NAIL IN WEST FACE OF 24" MAPLE.
N.80°E. 125.92' FOUND PK NAIL IN NORTH FACE OF UTILITY POLE.
S.61°E. 127.35' FOUND PK NAIL W/WASHER IN NORTH FACE OF UTILITY POLE.
S.44°W. 67.75' FOUND PK NAIL W/WASHER IN NORTHWEST FACE OF UTILITY POLE.



ACCEPTED BY THE MACOMB COUNTY SURVEY PEER GROUP AS THE OFFICIAL CORNER UNDER MICHIGAN PUBLIC ACT 345 OF 1980 AT A MEETING HELD ON 10-4-94
William E. Soderberg, P.S., CHAIRMAN

THE SELECTED LOCATION IS ACCEPTED BY ME AND IS GENERALLY ACCEPTED BY PROFESSIONAL SURVEYORS AS THE BEST AVAILABLE EVIDENCE OF THE POSITION OF THE ORIGINAL CORNER

Recorded by Steven E. Dunn Date Nov. 9, 1994

Surveyor's Michigan License No. 28408

LAND CORNER RECORDATION CERTIFICATE
Filing Requirement of Act 74, Mich. P.A. 1970

For corners in

<u>MACOMB</u> (County)	Located In: ERIN/LAKE	Corner Code # <u>D-1</u>
1. Public Land Survey	T <u>1N</u> R <u>13E</u>	<u>D-1</u>
	T _____ R _____	_____
	T _____ R _____	_____
	T _____ R _____	_____
2. Property Controlling in Section	S _____ T _____ R _____	_____
	S _____ T _____ R _____	_____
3. Miscellaneous Property in Sec.	S _____ T _____ R _____	_____
	S _____ T _____ R _____	_____

Register of Deeds Stamp & File Number

4. Lot No. _____, Recorded Plat _____
 5. Private Claims _____

	A	B	C	D	E	F	G	H	I	J	K	L	M
2		6		5		4		3		2		1	
3													
4		7		8		9		10		11		12	
5													
6		18		17		16		15		14		13	
7													
8		19		20		21		22		23		24	
9													
10		30		29		28		27		26		25	
11													
12		31		32		33		34		35		36	
13													

I, STEVEN E. DUNN, in a field survey on MARCH 20, 1994, do hereby certify that under requirements of P.A. 74, Michigan P.A. of 1970, the corner points mentioned in lines 1 and 2 above were in conformance with regulations and rules therefore as required in the current manual of survey instructions of the United States Department of the Interior, Bureau of Land Management or by a decree of a Court of Law and for that the corner points mentioned in lines 3, 4 and 5 above were in conformance with the rules of the Michigan Board of Land Surveyors or by a Decree of a Court of Law; established, re-established, monumented, re-monumented, recovered, found as expressed below:

NOTE: Not more than 4 corners, all in the same town and range, may be recorded on this certificate.

A. Description of original monument and accessories and/or subsequent restoration:

GLO POST - NO EVIDENCE OF ORIGINAL CORNER FOUND
 GLO ORIGINAL SURVEY PERFORMED BY PRESTON 2-18-1818

<u>L.C.R.C. D-13, T.2N., R.13E.</u>	<u>NAME AND NUMBER</u>	<u>DESCRIPTION</u>	<u>DATE</u>
L. 3004 P. 130	WILLIAM J. COULTER, #14760	FOUND 1/2" STEEL ROD IN C/O ASPHALT PAVEMENT	SEPTEMBER 19, 1978
<u>L.C.R.C. D-1, T.1N., R.13E.</u>			
L. 5298 P. 942	RAYMOND J. DONNELLY, #21563	FOUND 1/2" IRON PIPE	JANUARY 13, 1992
L. 3055 P. 814	GEORGE J. AVENDT, JR., #16034	FOUND 1/2" PIPE	JANUARY 15, 1979
<u>PLATS:</u>			
L. 17 P. 36	SUPERVISORS' PLAT NO. 2	JULY 21, 1936	
L. 14 P. 28	ASSESSOR'S PLAT NO. 4	MARCH 20, 1930	
L. 12 P. 16	GARFIELD PARK SUBDIVISION NO. 1	DECEMBER 3, 1926	

Order

B. Description of corner evidence found and/or method applied in restoring or reestablishing corner:

D-1 1/4 CORNER

FOUND 1/2" IRON PIPE IN MONUMENT BOX IN CONCRETE PAVEMENT
 VERIFIED LOCATION BY COMPARING FOUND WITNESSES OF L.C.R.C.'S LISTED BELOW AND COMPARING DISTANCE FROM D-1 TO E-1 AS SHOWN ON SUPERVISOR'S PLAT NO. 2 AND MDOT R/W MAP SHEET NO. 79 AND DISTANCE FROM D-1 TO C-1 AS SHOWN ON ASSESSOR'S PLAT NO. 4 AND GARFIELD PARK SUB. NO. 1.

Order

FOUND WITNESS TIES

L. 3004 P. 130	ENE	125.90'	PK. NAIL IN NORTHEAST FACE OF POLE
L. 5298 P. 942	-MAG AZ. 334°	37.58'	PK. NAIL IN NORTHEAST FACE OF UTILITY POLE

FIELD MEASUREMENTS AND RECORDED DISTANCES

D-1 TO C-1 = 2713.74' (M.)	2640.00' G.L.O. (R.)
D-1 TO E-1 = 2703.12' (M.)	2640.00' G.L.O. (R.)

C. Description of monument for corner and accessories established to perpetuate locating the position of the corner:

D-1 T.1N., R.13E. I REPLACED 1/2" IRON ROD WITH A 3/4" x 24" IRON ROD WITH 2" DIAMETER ALUMINUM CAP STAMPED "MACOMB COUNTY MONUMENT MI. ACT 345 #28408 IN AN EXISTING MONUMENT BOX.

WITNESSES

N.21°W.	37.50'	FOUND PK NAIL IN EAST FACE OF UTILITY POLE.
N.03E.	56.73'	FOUND PK NAIL IN WEST FACE OF 24" MAPLE.
N.80°E.	125.92'	FOUND PK NAIL IN NORTH FACE OF UTILITY POLE.
S.61°E.	127.35'	FOUND PK NAIL W/WASHER IN NORTH FACE OF UTILITY POLE.
S.44°W.	67.75'	FOUND PK NAIL W/WASHER IN NORTHWEST FACE OF UTILITY POLE.

THE SELECTED LOCATION IS ACCEPTED BY ME AND IS GENERALLY ACCEPTED BY PROFESSIONAL SURVEYORS AS THE BEST AVAILABLE EVIDENCE OF THE POSITION OF THE ORIGINAL CORNER

Signed by _____ Date _____

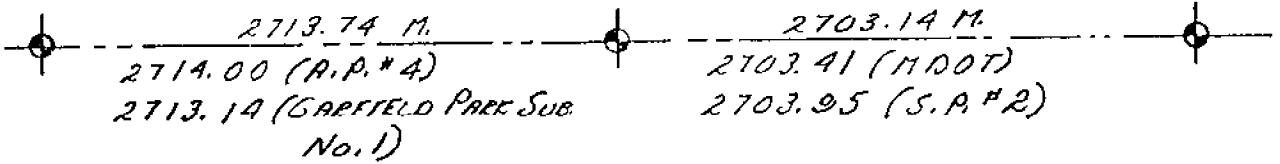
Surveyor's Michigan License No. 28408

22-141 50 SHEETS
22-142 100 SHEETS
22-144 200 SHEETS
AMPAS



CLINTON TWP.

SEC. 32



SEC 5

ERIN-LAKE TWP.

LAND CORNER RECORDATION CERTIFICATE
Filing Requirement of Act 74, Mich. P.A. 1970

1657065

RECORDED IN MACOMB COUNTY
RECORDS AT: 9:47A M.

JAN 13 1992

Edna M. ...

CLERK - REGISTER OF DEEDS
MACOMB COUNTY, MICHIGAN
Register of Deeds Stamp & File Number

For corners in	Located In.	Corner Code - //
Macomb (County)		
1. Public Land Survey	T 1N R 13E	D-1
	T R	
	T R	
	T R	
2. Property Controlling in Section	S T R	
	S T R	
3. Miscellaneous Property in Sec.	S T R	
	S T R	
4. Lot No. ... Recorded Plat		
5. Private Claims		

	A	B	C	D	E	F	G	H	I	J	K	L	M
2	6		5		4		3		2				
3													
4	7		8		9		10		11			12	
5													
6	18		17		16		15		14			13	
7													
8	19		20		21		22		23			24	
9													
10	30		29		28		27		26			25	
11													
12	31		32		33		34		35			36	
13													

Raymond J. Donnelly, in a field survey on December 28, 1990, do hereby certify that under requirements of P.A. 74, Michigan P.A. of 1970, the corner points mentioned in lines 1 and 2 above were in conformance with regulations and rules therefore as required in the current manual of survey instructions of the United States Department of the Interior, Bureau of Land Management or by a decree of a Court of Law and/or that the corner points mentioned in lines 3, 4 and 5 above were in conformance with the rules of the Michigan Board of Land Surveyors or by a Decree of a Court of Law, established, re-established, monumented, re-monumented, recovered, found as expressed below.

NOTE: Not more than 4 corners, all in the same town and range, may be recorded on this certificate.

A. Description of original monument and accessories and/or subsequent restoration

D-1 Unknown

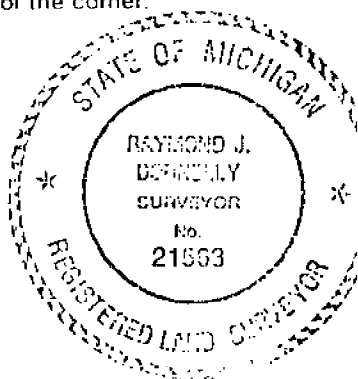
Erin Township, City of Fraser

B. Description of corner evidence found and/or method applied in restoring or reestablishing corner:

D-1 North 1/4 Corner Section 5
Found 1/2" Iron Pipe
South 39° West, 67.67' to M.C.R.C. tag in D.E. Pole
North 02° West, 33.06' to PK nail in D.E. Pole
North 29° East, 83.97' to SW corner of brick Security Building Cross Industries
South 16° East, 88.44' to NW corner of brick building EWS Company
Recovered using witnesses recorded in Liber 3055, Page 814, Macomb County Records

C. Description of monument for corner and accessories established to perpetuate locating the position of the corner:

D-1 North 1/4 Corner Section 5
Found 1/2" Iron Rod in Monument Box
Mag. AZ 28°, 83.80' to SW corner of brick "Cross Security" shack
Mag. AZ 163°, 88.47' to NW corner of brick "E.W.S." building
Mag. AZ 219°, 67.18' to PK nail with M.C.R.C. tag in NW face of Utility Pole
Mag. AZ 334°, 37.58' to PK nail in NE face of Utility Pole



Signed by

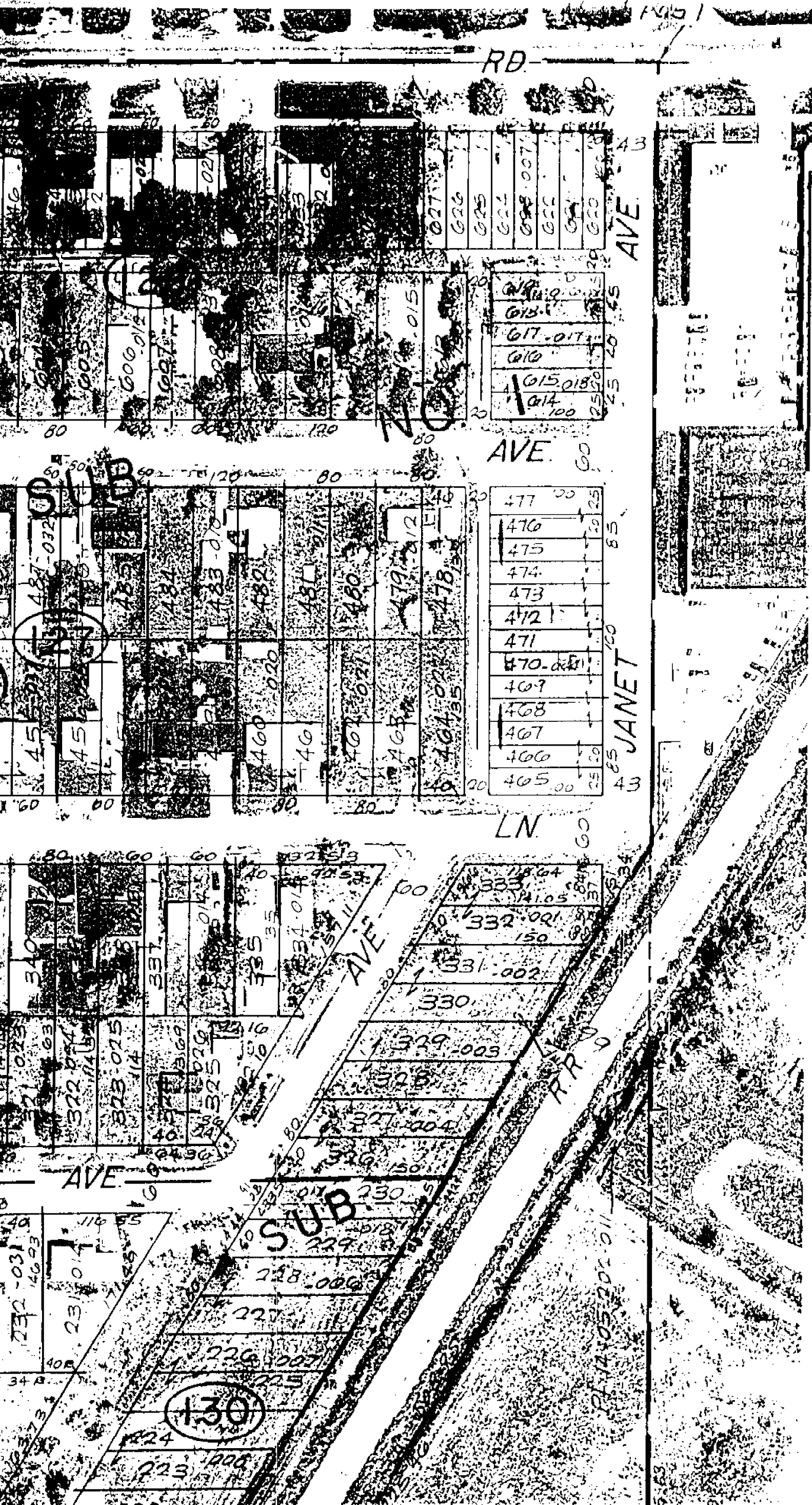
Raymond J. Donnelly

Date

Jan. 4, 1992

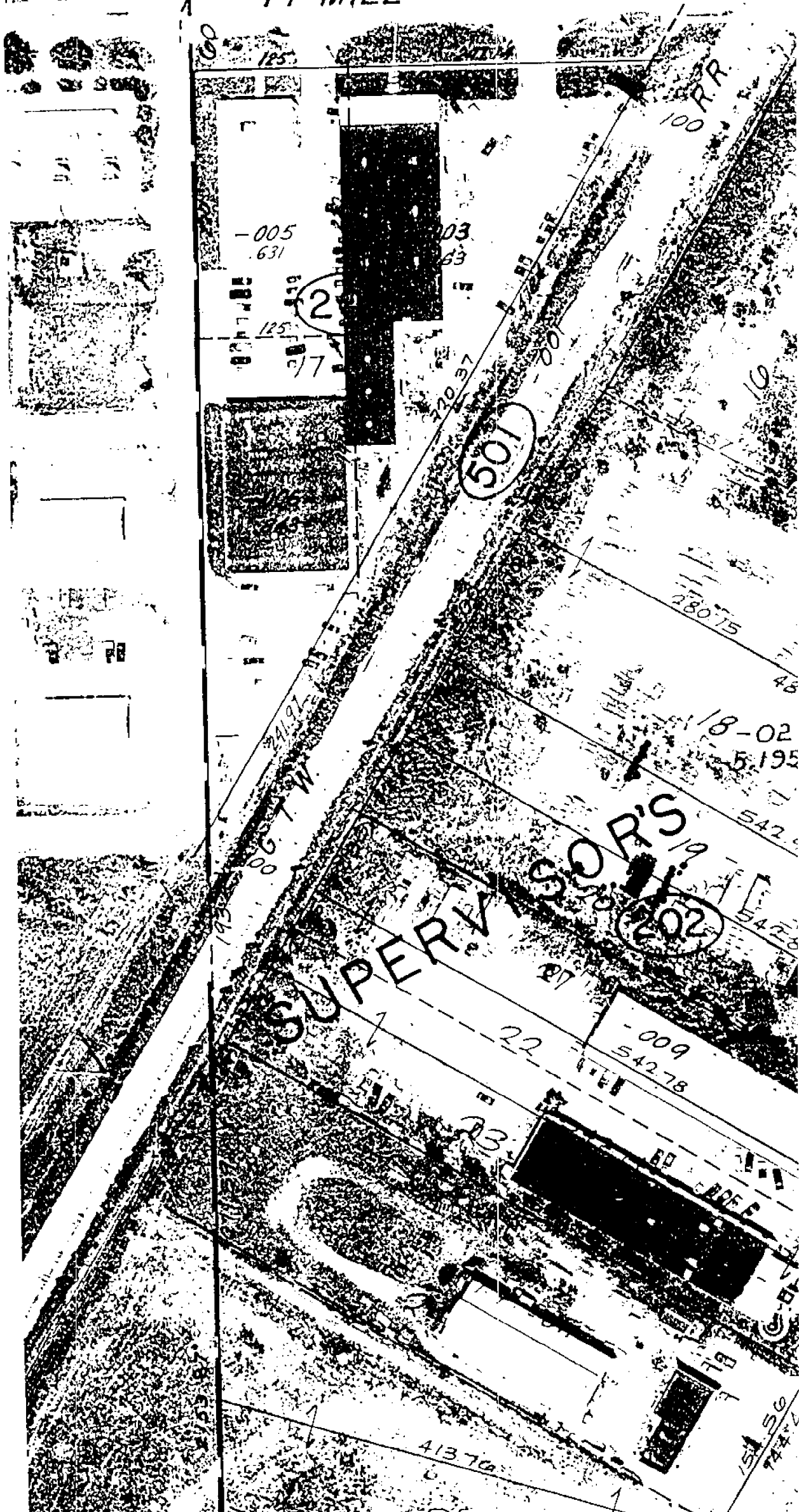
Surveyor's Michigan License No.

21563

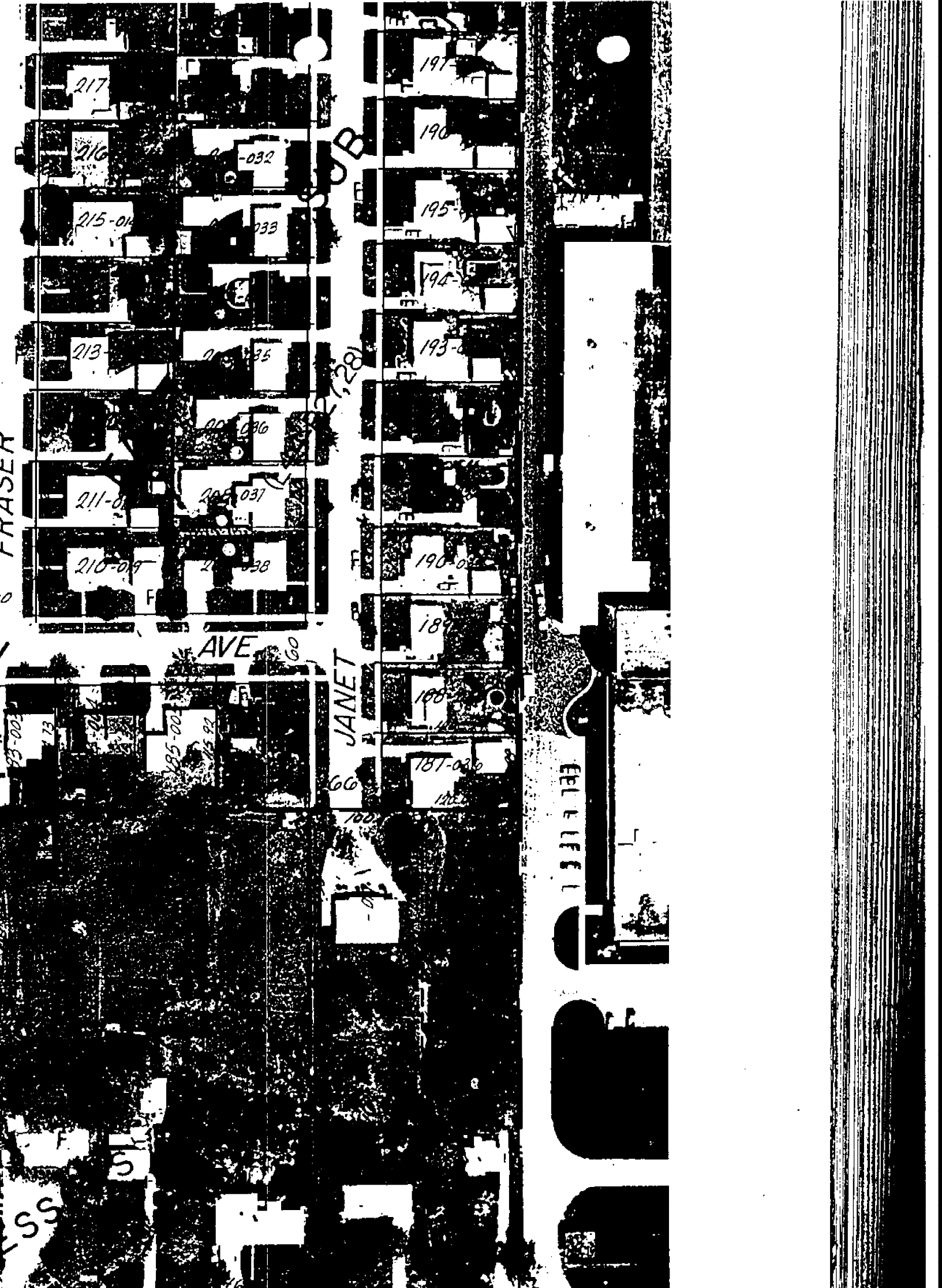


1/4 POST

1/4 MILE



D-1



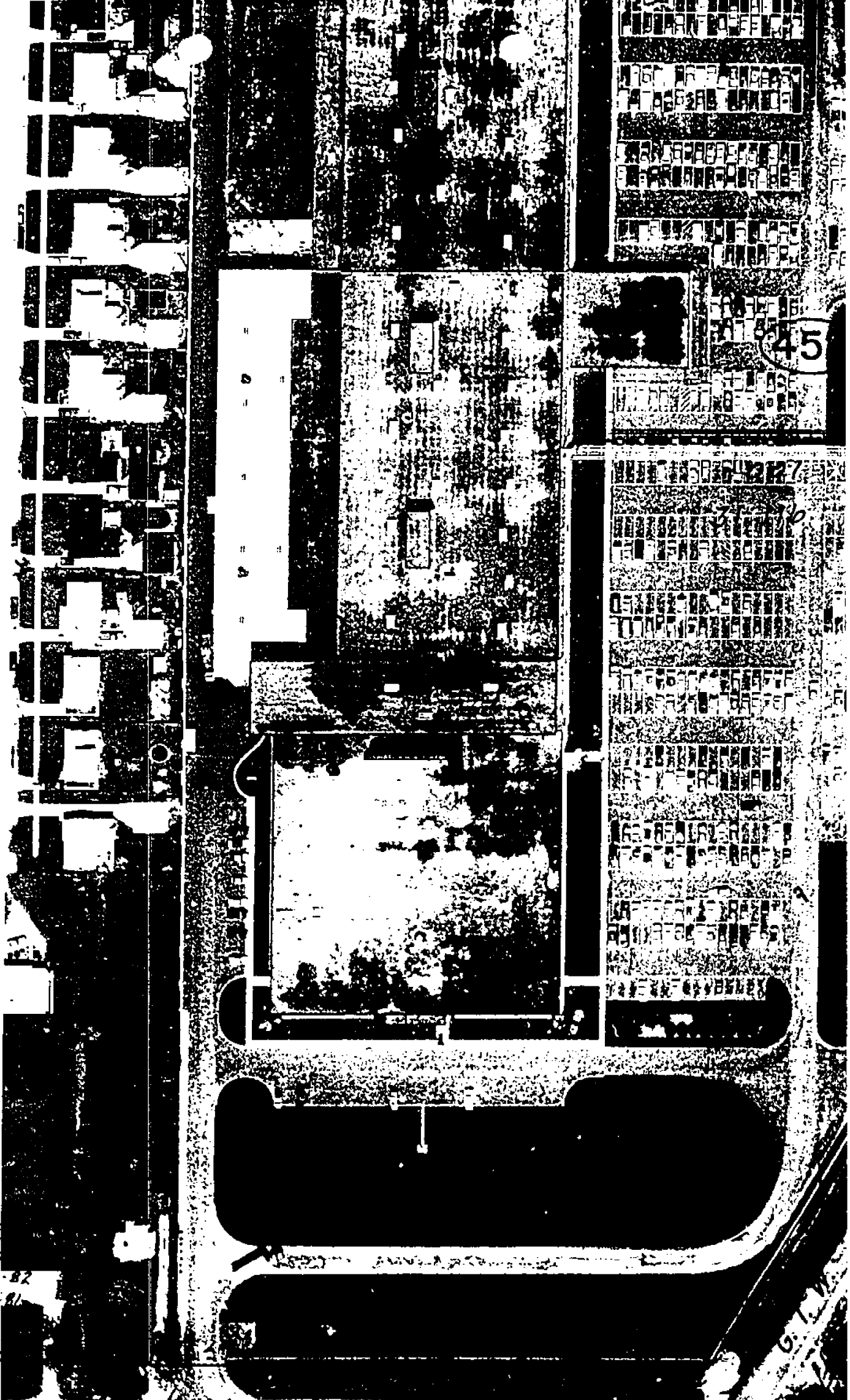
Copyright 1972
MACOMB COUNTY, MICHIGAN

SCALE 1" = 100'

R.13E.

D-1

II-32F



166
167
168
169
170
171
172
173
174
175
176
177
178
179
180
181
182
183
184
185
186
187
188
189
190
191
192
193
194
195
196
197
198
199
200

45

201
202
203
204
205
206
207
208
209
210
211
212
213
214
215
216
217
218
219
220
221
222
223
224
225
226
227
228
229
230
231
232
233
234
235
236
237
238
239
240
241
242
243
244
245
246
247
248
249
250

REV. 10-10
REV. 4-10
REV. 3-82
REV. 7-81
REV. 4-81
REV. 4-81
REV. 7-81

Copyright 1972
MACOMB COUNTY, MICHIGAN

14 MILE 409.43

SCALE: 1" = 100'

S 1/4 Post

11-32G

10-1

W. 1/2 S.E.

LAND CORNER RECORDATION CERTIFICATE

FILING REQUIREMENT OF ACT 74, MICH. P.A. 1970

City of Fraser, Macomb County, Michigan

A555927

FOR CORNERS OF--	N. 1/2 LOCATED IN--	Sec. 5	CORNER CODE NUMBER
1. PUBLIC LAND SURVEY	T. 1	N. X R. 13 X	D-1 N. 1/4 cor
2. PROPERTY CONTROLLING IN SECTION	T. _____	N. _____ S. _____ R. _____	_____
3. MISCELLANEOUS PROPERTY IN SECTION	T. _____	N. _____ S. _____ R. _____	_____
4. LOT NO. _____	RECORDED PLAT _____		_____
5. PRIVATE CLAIMS _____	_____		_____

RECORDED IN MACOMB COUNTY RECORDS AT: 8:30 A.M.
 JAN 15 1979
Edna H. Hill
 CLERK - REGISTER OF DEEDS
 MACOMB COUNTY, MICHIGAN
 REGISTER OF DEEDS STAMP AND FILING NUMBER

I, George J. Avendt, Jr. do hereby certify that under requirements of P.A. 74, Michigan P.A. of 1970, the corner points mentioned in lines 1 and 2 above (identified with circles on index code diagram - over) were, in a field survey on October 1978, established, re-established, monumented, re-monumented, recovered or restored as expressed below and in conformance with regulations and rules therefore as required in the current manual of survey instructions of the United States Department of the Interior, Bureau of Land Management or by a decree of a court of law. Furthermore, that the corner points mentioned in lines 3, 4 and 5 above were, in a field survey on _____ 19____ found, recovered, restored, established or re-established as expressed below and in conformance with the rules of the Michigan State Board of Registration for Land Surveyors or, by a Decree of a Court of law:

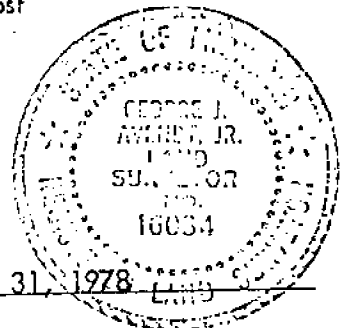
A. Description of original monument and accessories and/or subsequent restoration:

B. Description of corner evidence found and/or method applied in restoring or re-establishing corner:

D-1 Found 1/2" pipe

C. Description of monument for corner and accessories established to perpetuate locating the position of the corner:

D-1 North 33.08 ft. Found P.K. nail on West side of power pole
 N. N.E. 72.65 ft. Center of chain link anchor post
 S. S.E. 88.55 ft. NE corner brick shod #17730



SIGNED BY George J. Avendt, Jr. DATE October 31, 1978
 SURVEYOR'S MICHIGAN REGISTRATION NO. 16034 (SEAL)

FOR STATE AND UNITED STATES AGENCIES:

SIGNED BY _____ DATE _____
CHIEF OF SURVEY PARTY
 APPROVED AND SIGNED BY _____ DATE _____
MICHIGAN REGISTERED LAND SURVEYOR (SEAL)

SURVEYOR'S MICHIGAN REGISTRATION NO. _____

00815

LAND CORNER RECORDATION CERTIFICATE

FILING REQUIREMENT OF ACT 74, MICH. P.A. 1970

LIBER **3004** PAGE **130**

FOR CORNERS OF --	LOCATED IN --	CORNER CODE NUMBER
1. PUBLIC LAND SURVEY _____	T. <u>2</u> ^{N.} X R. <u>13</u> ^{E.} X	D-11, D-12, D-13
2. PROPERTY CONTROLLING IN SECTION _____	T. _____ ^{N.} S. _____ R. _____ ^{E.} W. _____	_____
3. MISCELLANEOUS PROPERTY IN SECTION _____	T. _____ ^{N.} S. _____ R. _____ ^{E.} W. _____	_____
4. LOT NO. _____, RECORDED PLAT _____		
5. PRIVATE CLAIMS _____		

A528593

RECORDED IN MACOMB COUNTY
RECORDS AT: **1:00 P. M.**

SEP 19 1978

Edna M. Hill
CLERK - REGISTER OF DEEDS
MACOMB COUNTY, MICHIGAN
REGISTER OF DEEDS STAMP AND
FILING NUMBER

I, William J. Coulter, do hereby certify that under requirements of P.A. 74, Michigan P.A. of 1970, the corner points mentioned in lines 1 and 2 above were, in a field survey on Sept. 11, 1978, established, re-established, monumented, re-monumented, recovered or restored as expressed below and in conformance with regulations and rules therefore as required in the current manual of survey instructions of the United States Department of the Interior, Bureau of Land Management or by a decree of a court of law. Furthermore, that the corner points mentioned in lines 3, 4 and 5 above were, in a field survey on _____, 19____, found, recovered, restored, established or re-established as expressed below and in conformance with the rules of the Michigan State Board of Registration for Land Surveyors or, by a Decree of a Court of law:

A. Description of original monument and accessories and/or subsequent restoration:

B. Description of corner evidence found and/or method applied in restoring or re-establishing corner:

- D-11 1/2" steel rod found in ϵ of Asphalt pavement
- D-12 4" diam. steel corner fence post, 8' high
- D-13 1/2" steel rod found in ϵ of Asphalt pavement.

C. Description of monument for corner and accessories established to perpetuate locating the position of the corner:

- D-11 N.E. 94.30' P.K. in Light pole - North 60.00' survey iron - South 60.00' Conc. M. N.W. 34.40' Steel corner fence Post - South 51.95' P.K. in D.E. Pole
- D-12 South-8' steel fence on N-S 1/4 line - East -8' Steel fence on E-W 1/4 line East 6.0' south end of 6' Conc. Wall
- D-13 S.W. 67.58' M.C.R.C. Nail in D.E. Pole - North 33.02' P.K. in D.E. Pole - E.N.E. 125.90' P.K. in D.E. Pole.

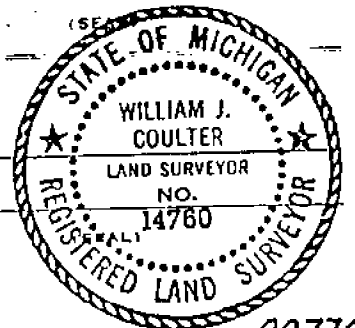
SIGNED BY William J. Coulter DATE Sept 19, 1978

SURVEYOR'S MICHIGAN REGISTRATION NO. 14760

FOR STATE AND UNITED STATES AGENCIES:

SIGNED BY _____ DATE _____
CHIEF OF SURVEY PARTY

APPROVED AND SIGNED BY _____ DATE _____
MICHIGAN REGISTERED LAND SURVEYOR

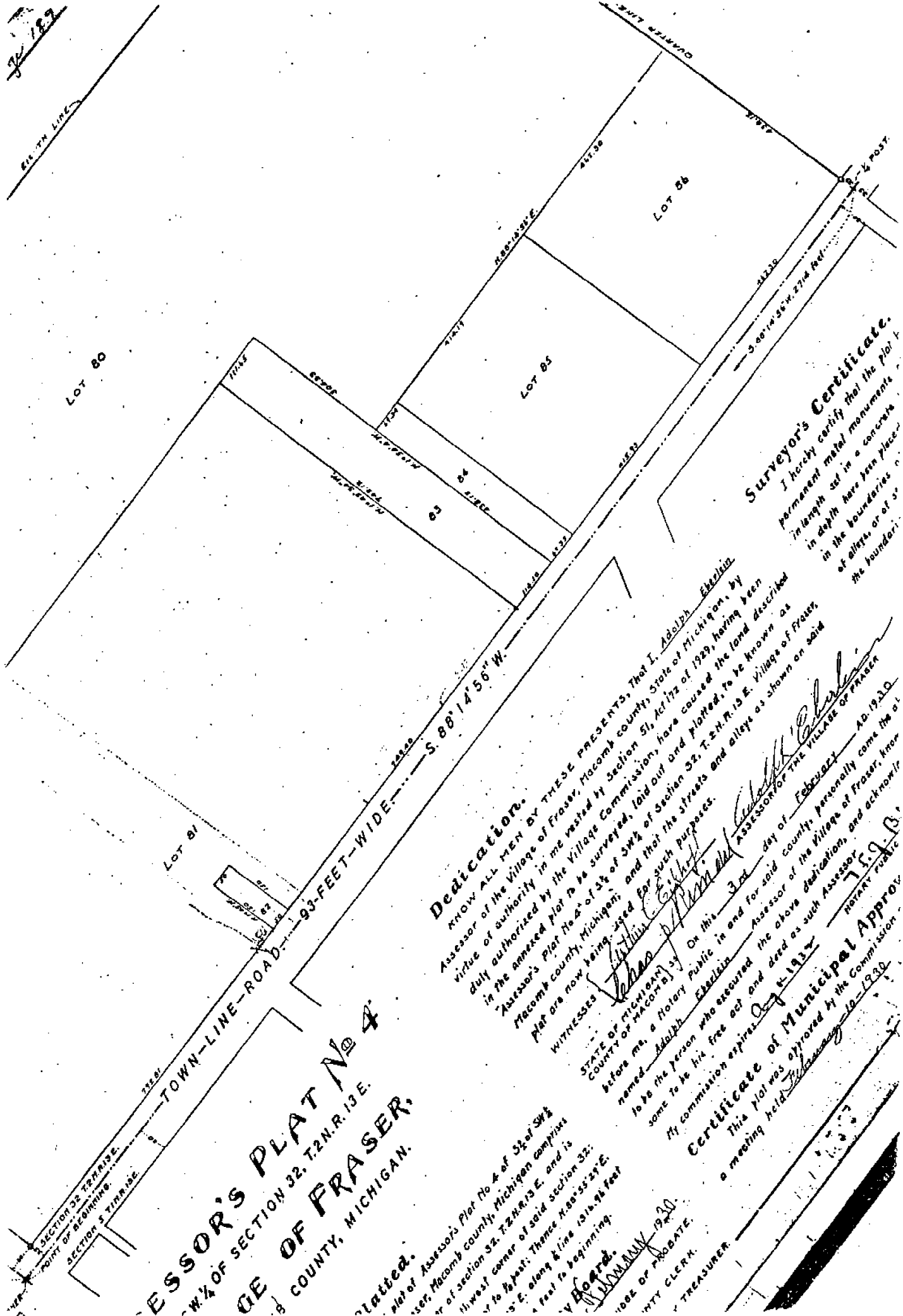


SURVEYOR'S MICHIGAN REGISTRATION NO. _____

308
2-11-E

00776

72 183



ESSOR'S PLAT No. 4
W. 1/4 OF SECTION 32, T. 2N. R. 13 E.
VILLAGE OF FRASER,
MACOMB COUNTY, MICHIGAN.

Platted.
 plat of Assessor's Plat No. 4 of 3/4 of SW 1/4
 of section 32, Macomb county, Michigan comprising
 11 1/2 to 1/2 feet; Thence N. 80° 55' 29\"/>

Dedications.

KNOW ALL MEN BY THESE PRESENTS, That I, Adolph Ebelin
 Assessor of the Village of Fraser, Macomb county, State of Michigan, by
 virtue of authority in me vested by Section 51, Act No. 129, having been
 duly authorized by the Village Commission, have caused the land described
 in the annexed plat to be surveyed, laid out and platted, to be known as
 Assessor's Plat No. 4 of 3/4 of SW 1/4 of Section 32, T. 2N. R. 13 E. Village of Fraser,
 Macomb county, Michigan, and that the streets and alleys as shown on said
 plat are now being used for such purposes.

WITNESSES
John J. [Signature]
 STATE OF MICHIGAN, On this 3rd day of February A.D. 1930
 County of Macomb, before me, a Notary Public in and for said county, personally came the
 named Adolph Ebelin Assessor of the Village of Fraser, know-
 ing to be the person who executed the above dedication, and acknowl-
 edging to be his free act and deed as such Assessor, and acknowl-
 edging my commission expires 4-1-1931
Certificate of Municipal Approval
 This plat was approved by the Commission
 at a meeting held January 10-1930

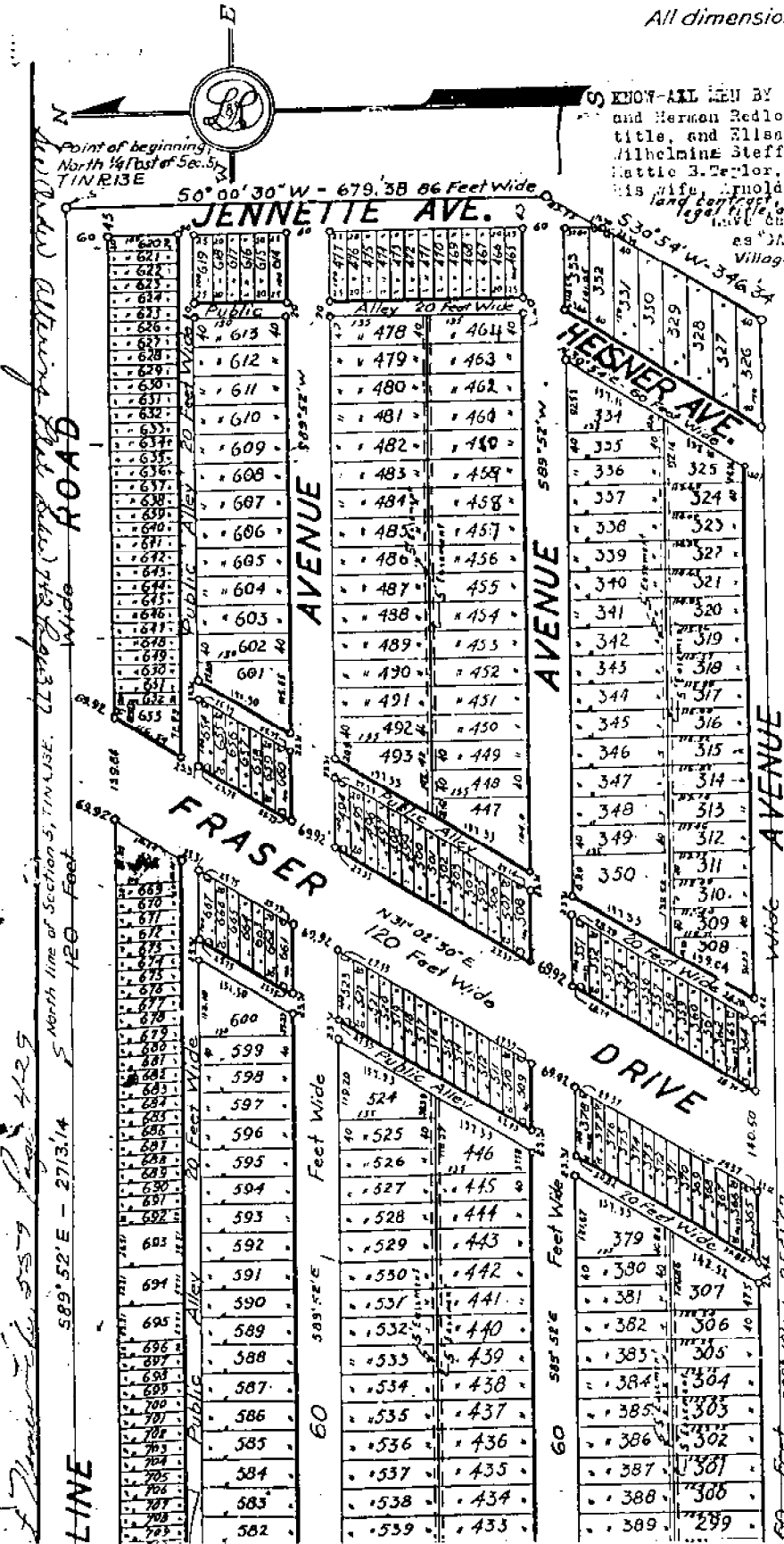
Surveyor's Certificate.
 I hereby certify that the plat
 permanent metal monuments
 in length set in a concrete
 in depth have been placed
 in the boundaries of
 of alleys, or of
 the boundaries.

[Signature] 1930
 CLERK
[Signature]
 TREASURER

PLAT OF GARFIELD PARK SUBDII

Being part of the N.W. 1/4 of Section 5, T14N R13E, Village of Fraser, Macomb County, Mich. Scale: 1 inch = 150 feet.

All dimensions given in feet and decimals thereof.



KNOW-ALL MEN BY THESE PRESENTS, that we, Fred Josephson and Herman Redlowski and Olga Redlowski, his wife, and title, and Elizabeth Coleod, Albert B. Taylor and Emma Wilhelmine Steffens, his wife, Christian Matthews and Mattie B. Taylor, his wife, Edward W. Schounemann and Jane his wife, Arnold Kallrich, a single man, and Fred Hyde and Homer D. Hyde, trustee holder for Otto F. Beckenhauer, a widower, as more fully set forth in the legal description of the land embraced in the aforesaid plat as "GARFIELD PARK SUBDIVISION NO. 1," being part of the Northwest 1/4 of Section 5, T14N R13E, Village of Fraser, Macomb County, Michigan, are hereby dedicated to the use of the

Fred Josephson (L.S.)
Louis J. Schounemann (L.S.)
Herman Redlowski (L.S.)
Olga Redlowski (L.S.)
Frederick F. Schounemann (L.S.)
Arnold Kallrich (L.S.)
Fred Hyde (L.S.)
Homer D. Hyde (L.S.)
 Signed and sealed in the presence of
Arthur D. ...

STATE OF MICHIGAN, ss.
 County of Macomb ss.
 On this ... day of ... for said county, personally came the Fred Redlowski, Olga Redlowski, Frederick F. Schounemann, Walter C. Steffens, Wilhelmine Steffens, Mattie B. Taylor, Edward W. Schounemann, rich, Herman A. Miller, Bertha H. Miller, Hyde and Homer D. Hyde, & Gladys L. known to me to be the persons who executed to be their free act and deed.

My commission expires *Aug. 1922*
 The land embraced in the aforesaid plat is part of the Northwest 1/4 of Section 5, T14N R13E, Michigan, more fully described as follows: 50° 00' 30" W, 679.38 feet; thence S 30° 00' 30" W, 2541.67 feet; thence R 00° 00' 00" W, 140.50 feet along the North line of said section.

This plat was approved by the Board of Assessors at a meeting held *Aug. 1922*
 This plat was approved on *Aug. 1922*

CLERK'S OFFICE,
 County of Macomb
 Received for Record this *3rd* day of *December*, A.D., 192*2* at *7.30* o'clock A.M. and Recorded

F 1 A. R 12 E

North Boundary

East	On Washington Street from Jones to 2.1 R. 281
40.00	Set Temporary 1/4 mile Post
80.00	Set Temporary Post for Sec. Cor.
40.00	Set Temporary 1/4 mile Post
80.00	Set Temporary Post for Sec. Cor.
40.00	Set Temporary 1/4 mile Post
80.00	Set Temporary Post for Sec. Cor.
40.00	Set Temporary 1/4 mile Post
80.00	Set Temporary Post for Sec. Cor.
40.00	Set Temporary 1/4 mile Post
79.97	Intersected Ridge Run 281 Sec. South

F 1 A. R 12 E

West

	Corrected West Between Townships
	172 North Range 12 East on
	South Boundary Sec. 36 T. 2. N. 12. E.
13.06	Beach 35' Duckies dam.
33.32	Bayou 12 " "
40.00	Intersect Temporary 1/4 mile Post to
	its proper place in true Township line.
	At Post 22 N. 38 E. 3. 1/2 Sec.
	Reading 5 1/2 Sec. 411.
50.00	Set Post 20' Duckies dam.
76.47	Beach 18 " "
80.00	Set Temporary Post to proper place
	on true line for Cor. Section 35
	36 from which
	Survey 4. 1/2 Sec. East 1/2
	Survey 5 N. 32 E. 2.
	First 25' Chain Ridge - Rest
	Survey land. Under Oak
	Post. E. Sec. 20.

Town 1 North Range 13 East

June 12 883 50 0
 Do 12 841 0 6

No public lands East of this corner

North Boundary

East

6 58 13. Oak 24 in diam
 19.00 Marsh
 33.30 1st marsh
 36.00 Marsh
 41.00 made 74 Sec. cor. in a willow in diam
 40.50 1st marsh
 42.62 W.C. 24 in diam
 10.00 made cor. for sections 5, 6, 31, 32 on
 a Kambekum 7 in diam
 Land 1st half mile 1st rate last 1/2 mile
 2nd rate part dry Timber N.O. Oak
 Elm Middle White Kambekum etc.

East

40.00 made 74 Sec. cor. in a Hickory 7 in diam
 66.00 W.C. 30 inches diam
 10.00 made cor. for sections 16, 17, 32, 33
 on a Sycamore 40 inches diameter
 Land level and dry 2nd rate Timber
 N. Oak Spruce Polder Birch Sugar etc
 Wild 7th Spruce etc.

41.00 made 12 mile cor. in an Elm in diam
 49.50 Spruce 14 in diam
 10.00 Sit part for sections 24, 33, 34
 East from point which a Birch 6 in diam
 bears N 15 E 11 the dist also a Birch in
 diam bears N 11 E 16 the dist - Land
 2nd rate level and dry Timber N. Oak

Town North Range 13 East

Sugar Poplar *Lyrus* 10 *Ungt* *Spice*

11/13 Birch 16 in diam
 20.00 Run 1/2 the course S.E.
 110.00 Made 1/2 mile cor on a Birch 10 in diam
 10.00 Set post for cor of sections 23, 24 & 25
 pole which a Birch 11 in diam bears
 N 53 E 17. the dist also on a tree 24 in
 diam bears N 5 W 31 the distant
 land first 1/2 mile good 2nd rate
 last half 3rd rate Timber Birch Sugar
 Oak Poplar B. Ash & *Ungt* *Spice*

20.15 Oak 18 in diam
 30.00 Intersected Birch claim N. 125 from the
 Set post for cor of sections 2 & 35
 pole which a B. Ash 10 in diam
 bears N 77 E 11 the dist also on
 Lyrus 7 in diam bears N 52 E 7 the
 dist Land dry good 2nd rate Timber
 Birch B. Ash Poplar &c

West Boundary

North of the first Meridian of the Territory
 Ch. 10 of Michigan

12.31 Poplar 36 inches diameter
 110.00 Set post for cor of 1/4 Section from
 which a Sugar tree 13 inches diam
 bears South 9 the distant
 118.62 Sycamore 36 in diam
 10.00 Set mile post for cor of sections
 25 & 36 from which a tree 10 in
 diam bears S 77 E 10 the distant
 also a Lyrus 10 in diam bears N 35
 W 20 the dist Land first half